

RESPIRATORY VIRUS DETECTION REPORT

September 18 to September 24, 2022
(Surveillance Week 2022-38)



In this Respiratory Virus Report, the number of detections of coronavirus reflects only seasonal human coronaviruses, not the novel pandemic coronavirus (SARS-CoV-2) that causes COVID-19. For information on COVID-19, see the [Coronavirus disease \(COVID-19\): Outbreak update](#).

Overall Summary

Respiratory virus detections remain low in Canada, but are increasing. Activity of all viruses is near or below expected levels.

- Enterovirus/Rhinovirus remains the most common seasonal respiratory virus detected in Canada (796 detections; 23.3% positive). Activity is increasing, but remains below expected levels for this time of year.
- Detections of other respiratory viruses are low, but activity is near expected levels.
- 32/34 sentinel laboratories reported surveillance data.

Abbreviations

Flu: Influenza

Flu A(H1N1)pdm09: Influenza A(H1N1)pdm09

Flu A(H3): Influenza A(H3N2)

Flu A (UnS): Influenza A(Unsubtyped)

RSV: Respiratory syncytial virus

HPIV: Human parainfluenza virus

HMPV: Human metapneumovirus

ADV: Adenovirus

EV/RV: Enterovirus/Rhinovirus

HCoV: Human coronavirus

Atl: Atlantic Canada

BC: British Columbia

Can: Canada

EORLA: Eastern Ontario Regional Laboratory Association

HSC: Health Sciences Centre

N.C.: Data not collected

N.R.: Data not reported for current week

ON: Ontario

PR: Prairies

P.H.O.L.: Public Health Ontario Laboratory

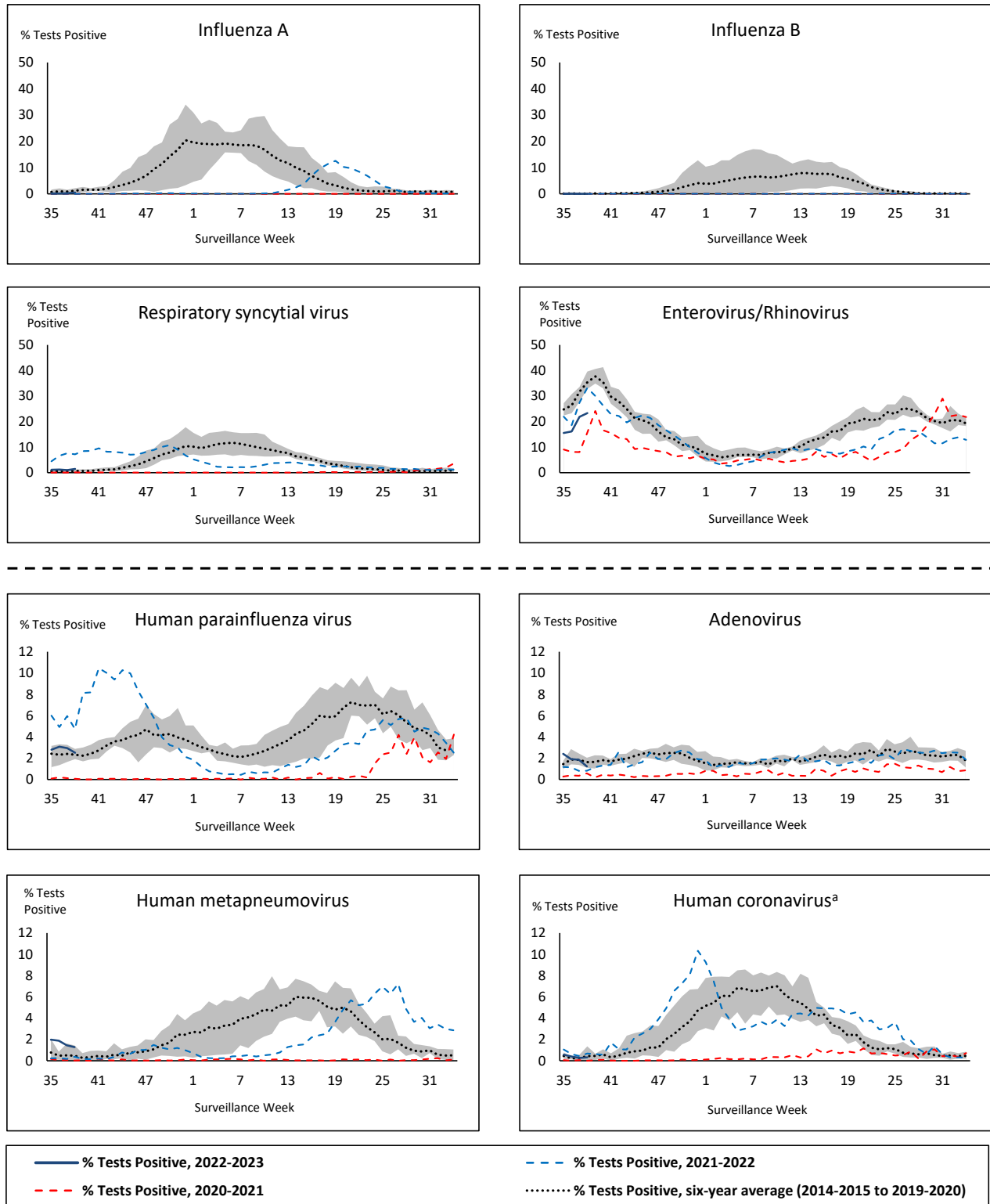
QC: Quebec

Terr: Territories of Canada

UHN: University Health Network



Figure 1: Positive respiratory virus tests (%) reported by participating laboratories in Canada by surveillance week compared to average and range from 2014-2015 to 2019-2020 season



Shaded area represents the maximum and minimum % of respiratory virus tests positive reported by week from seasons 2014-2015 to 2019-2020

Note: Data from week 11 of the 2019-2020 season onwards are excluded from the historical comparison due to the COVID-19 pandemic

Note: % Tests Positive scale changes across the dashed line

^a Human coronavirus excludes human coronaviruses SARS-CoV, MERS-CoV and SARS-CoV-2; Includes seasonal human coronaviruses HCoV-229E, HCoV-OC43, HCoV-NL63, HCoV-HKU1.

Table 1: Respiratory virus detections for the week ending September 24, 2022 (surveillance week 2022-38)

Reporting Laboratory	Flu Tested	A(H1)pdm09 Positive	A(H3) Positive	A(UnS) Positive	Total Flu A Positive	Total Flu B Positive	RSV Tested	RSV Positive	HPIV Tested	HPIV 1 Positive	HPIV 2 Positive	HPIV 3 Positive	HPIV 4 Positive	Other HPIV Positive	ADV Tested	ADV Positive	HMPV Tested	HMPV Positive	EV/RV Tested	EV/RV Positive	HCoV Tested	HCoV Positive	
Newfoundland	196	0	0	0	0	0	196	3	196	1	0	0	0	0	196	0	196	2	196	30	196	0	
Prince Edward Island	44	0	0	0	0	0	44	2	44	0	1	3	0	0	44	2	44	1	44	22	44	0	
Nova Scotia	202	0	0	1	1	0	202	1	45	0	0	0	0	0	45	1	45	0	45	13	45	0	
New Brunswick	346	0	0	0	0	0	265	2	49	0	0	1	0	0	49	1	49	0	49	9	49	0	
Atlantic	788	0	0	1	1	0	707	8	334	1	1	4	0	0	334	4	334	3	334	74	334	0	
Région Nord-Est	614	0	0	0	0	0	115	3	2	0	0	0	0	0	2	0	2	0	N.C.	N.C.	2	0	
Québec-Chaudière-Appalaches	395	0	0	0	0	0	395	23	35	1	1	1	1	0	235	3	235	4	N.C.	N.C.	136	1	
Centre-du-Québec	145	0	0	0	0	0	145	10	85	3	0	0	0	0	85	2	85	2	N.C.	N.C.	85	0	
Montréal-Laval	771	0	0	4	4	0	740	28	375	4	2	1	0	0	375	9	375	18	N.C.	N.C.	203	1	
Ouest du Québec	238	0	0	1	1	0	162	6	13	1	0	0	0	0	13	2	13	0	N.C.	N.C.	13	1	
Montérégie	391	0	0	1	1	1	391	30	0	0	0	0	0	0	0	0	0	0	N.C.	N.C.	0	0	
Province of Québec	2554	0	0	6	6	1	1948	100	510	9	3	2	1	0	710	16	710	24	N.C.	N.C.	439	3	
P.H.O.L. - Ottawa	35	0	0	0	0	0	35	1	35	0	0	0	0	0	35	0	35	0	35	6	35	0	
EORLA	268	0	0	1	1	0	268	9	38	2	0	0	0	0	38	2	38	0	38	18	38	0	
P.H.O.L. - Kingston	40	0	0	0	0	0	40	1	40	0	0	0	0	0	40	1	40	0	40	18	40	0	
UHN / Mount Sinai Hospital	368	0	0	3	3	0	368	1	9	0	0	0	0	0	9	0	9	0	9	0	9	0	
P.H.O.L. - Toronto	278	6	13	0	1	0	278	0	278	0	0	0	0	6	279	1	278	3	278	52	278	1	
Sick Kids Hospital - Toronto	N.R.	N.R.	N.R.	N.R.	N.R.	N.R.	N.R.	N.R.	N.R.	N.R.	N.R.	N.R.	N.R.	N.R.	N.R.	N.R.	N.R.	N.R.	N.R.	N.R.	N.R.	N.R.	N.R.
Shared Hospital Laboratory	3060	0	0	9	9	0	3060	21	145	1	0	0	0	2	144	1	144	0	117	7	128	1	
P.H.O.L. - Sault Ste. Marie	1	0	0	0	0	0	1	0	1	0	0	0	0	0	1	0	1	0	1	0	1	0	
P.H.O.L. - Timmins	14	0	0	0	0	0	14	0	14	0	0	0	0	0	14	0	14	0	14	6	14	0	
St. Joseph's - London	67	0	0	0	0	0	67	1	67	0	0	0	0	1	67	0	67	0	67	19	2	0	
P.H.O.L. - London	113	0	1	0	1	0	113	3	113	0	0	0	0	3	113	2	113	1	113	25	113	0	
P.H.O.L. - Orillia	27	0	1	0	1	0	27	1	27	0	0	0	0	1	27	1	27	0	27	22	27	0	
P.H.O.L. - Thunder Bay	9	0	0	0	0	0	9	0	9	0	0	0	0	0	9	0	9	0	9	7	9	0	
P.H.O.L. - Sudbury	11	0	0	0	0	0	11	0	11	0	0	0	0	1	11	0	11	0	11	2	11	0	
P.H.O.L. - Hamilton	59	0	0	0	0	0	59	2	59	0	0	0	0	3	59	0	59	0	59	8	59	0	
P.H.O.L. - Peterborough	21	0	0	0	0	0	21	1	21	0	0	0	0	3	21	0	21	0	21	8	21	0	
St. Joseph's - Hamilton	780	0	0	2	2	0	780	12	780	0	0	20	0	0	780	0	780	4	780	158	0	0	
Province of Ontario	5151	6	15	15	18	0	5151	53	1647	3	0	20	0	20	1647	8	1646	8	1619	356	785	2	
Manitoba	N.R.	N.R.	N.R.	N.R.	N.R.	N.R.	N.R.	N.R.	N.R.	N.R.	N.R.	N.R.	N.R.	N.R.	N.R.	N.R.	N.R.	N.R.	N.R.	N.R.	N.R.	N.R.	N.R.
Saskatchewan	466	0	0	0	0	0	466	1	204	0	0	5	0	0	205	10	205	9	205	39	204	0	
Alberta	1867	4	5	2	11	1	1657	7	837	3	2	8	1	0	837	5	835	2	821	180	837	5	
Prairies	2333	4	5	2	11	1	2123	8	1041	3	2	13	1	0	1042	15	1040	11	1026	219	1041	5	
British Columbia	2225	2	5	0	27	1	2149	7	414	2	0	9	3	2	414	8	414	7	405	134	405	0	
Yukon	3	0	0	0	0	0	3	0	N.C.	N.C.	N.C.	N.C.	N.C.	N.C.	N.C.	N.C.	N.C.	N.C.	N.C.	N.C.	N.C.	N.C.	N.C.
Northwest Territories	31	0	0	0	0	0	31	0	0	0	0	0	0	0	0	0	0	0	31	13	0	0	
Nunavut	98	2	0	0	2	0	98	2	N.C.	N.C.	N.C.	N.C.	N.C.	N.C.	N.C.	N.C.	N.C.	N.C.	N.C.	N.C.	N.C.	N.C.	
Territories	132	2	0	0	2	0	132	2	0	0	0	0	0	0	0	0	0	0	31	13	0	0	
CANADA	13183	14	25	24	65	3	12210	178	3946	18	6	48	5	22	4147	51	4144	53	3415	796	3004	10	

The data in the RVDSS report represent surveillance data available at the time of writing. Data missing from the current week are denoted by N.R. Data not collected by reporting lab denoted by N.C.

Specimens from Yukon (YT) are sent to reference laboratories in British Columbia and reported results reflect specimens identified as originating from YT.

Results from British Columbia comprise of specimens from the following sites: BC Children's and Women's Hospital, Children's and Women's Hospital Laboratory, Fraser Health Medical Microbiology Laboratory, Island Health, Providence Health Care, Powell River Hospital, St. Paul's Hospital, Vancouver General Hospital, Victoria General Hospital, BCCDC Public Health Laboratory, Interior Health Authority sites and Northern Health Authority sites.

Delays in the reporting of data may cause data to change retrospectively.

For British Columbia, only data from subtyped influenza A specimens are included in the weekly number of influenza detections. The sum of A(H1N1)pdm09, A(H3), and A(UnS) positive results may not equal the sum of total Flu A positive results.

Due to different testing protocols of laboratories across Canada, influenza A subtype detection counts may not be included in total influenza A detection counts, as some subtype detections are not available through routine testing but are subsequently reported if further subtype testing is conducted. In these instances, subtype counts do not reflect influenza A detections intended to be captured by routine surveillance, and are excluded from total detections and percent positivity.

Figure 2: Number of positive respiratory virus tests reported by participating laboratories in Canada by surveillance week

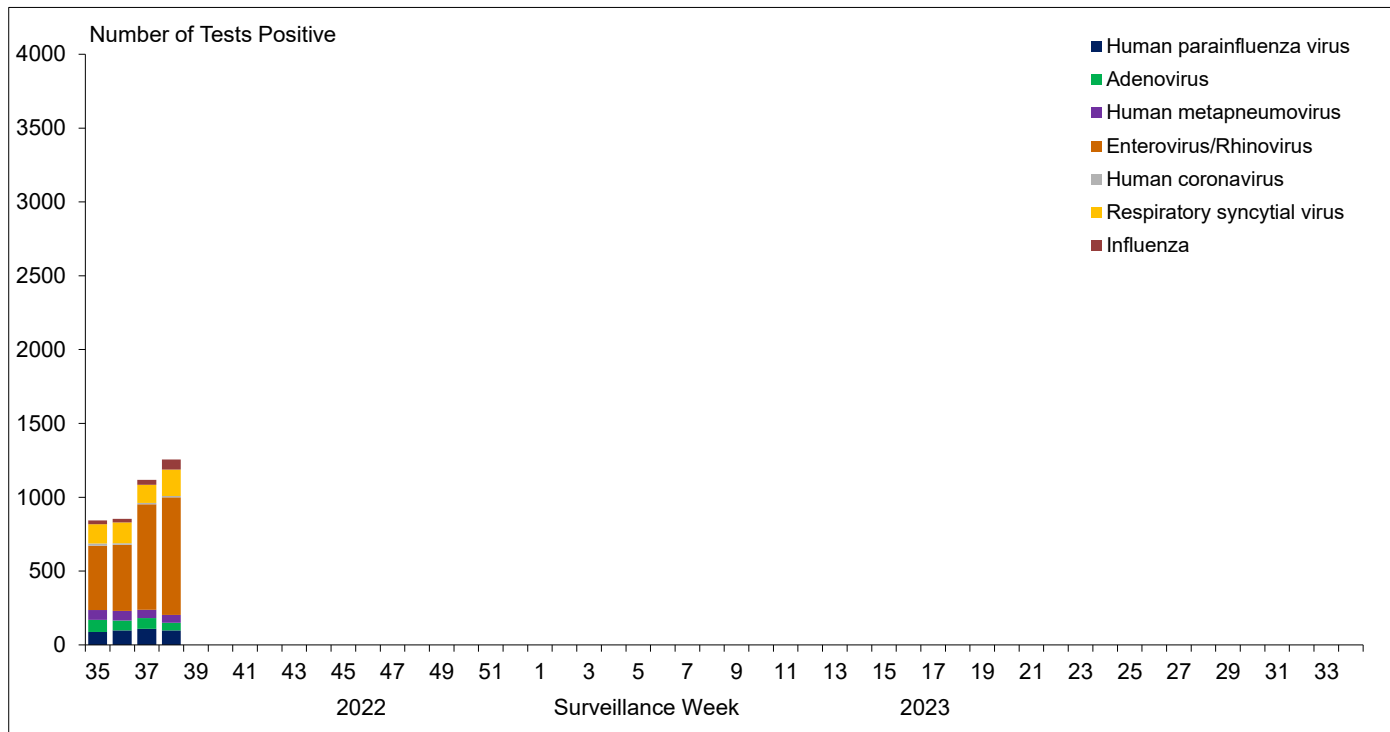


Figure 3: Positive Influenza (Flu) tests (%) in Canada by region by surveillance week

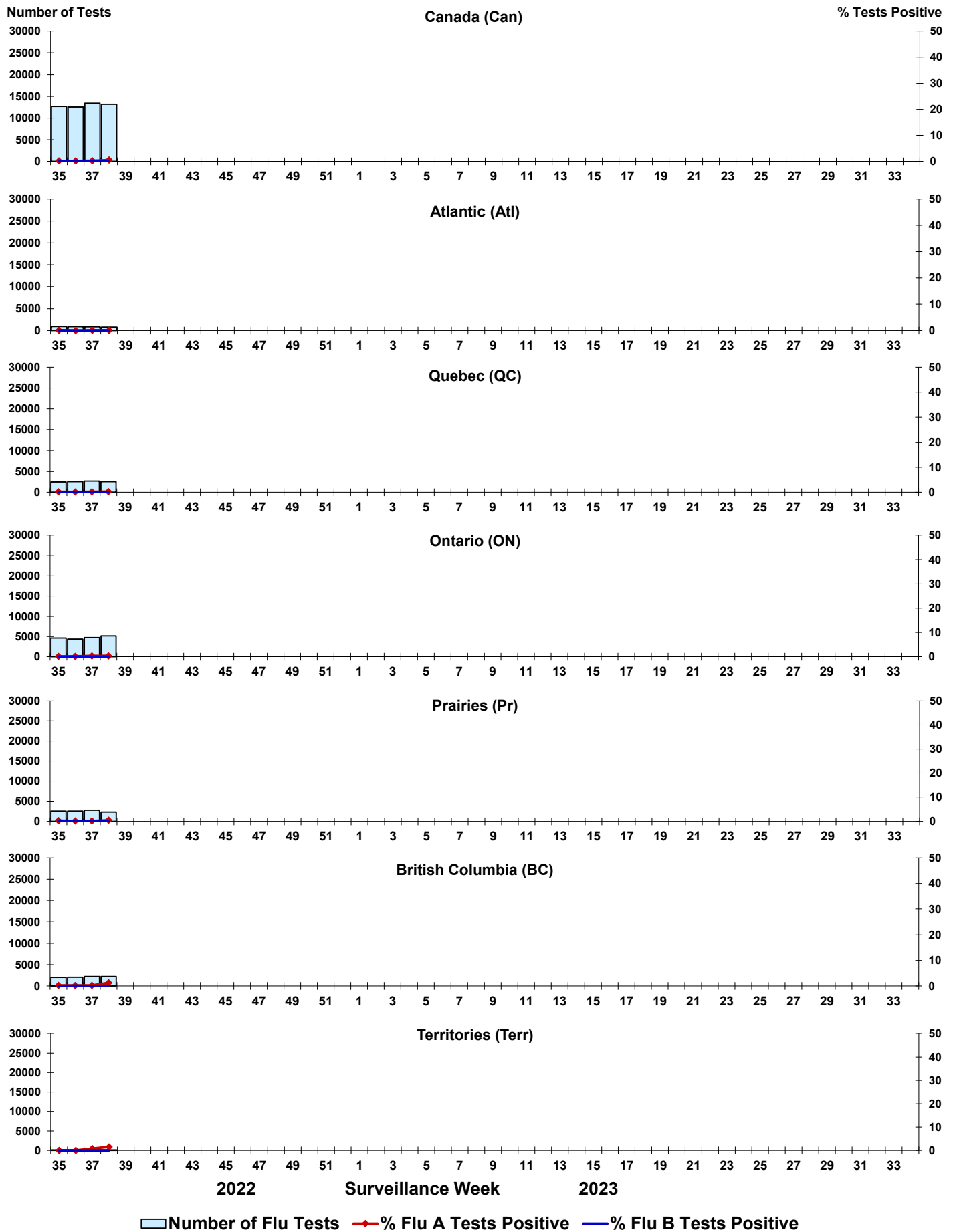


Figure 4: Positive Respiratory syncytial virus (RSV) tests (%) in Canada by region by surveillance week

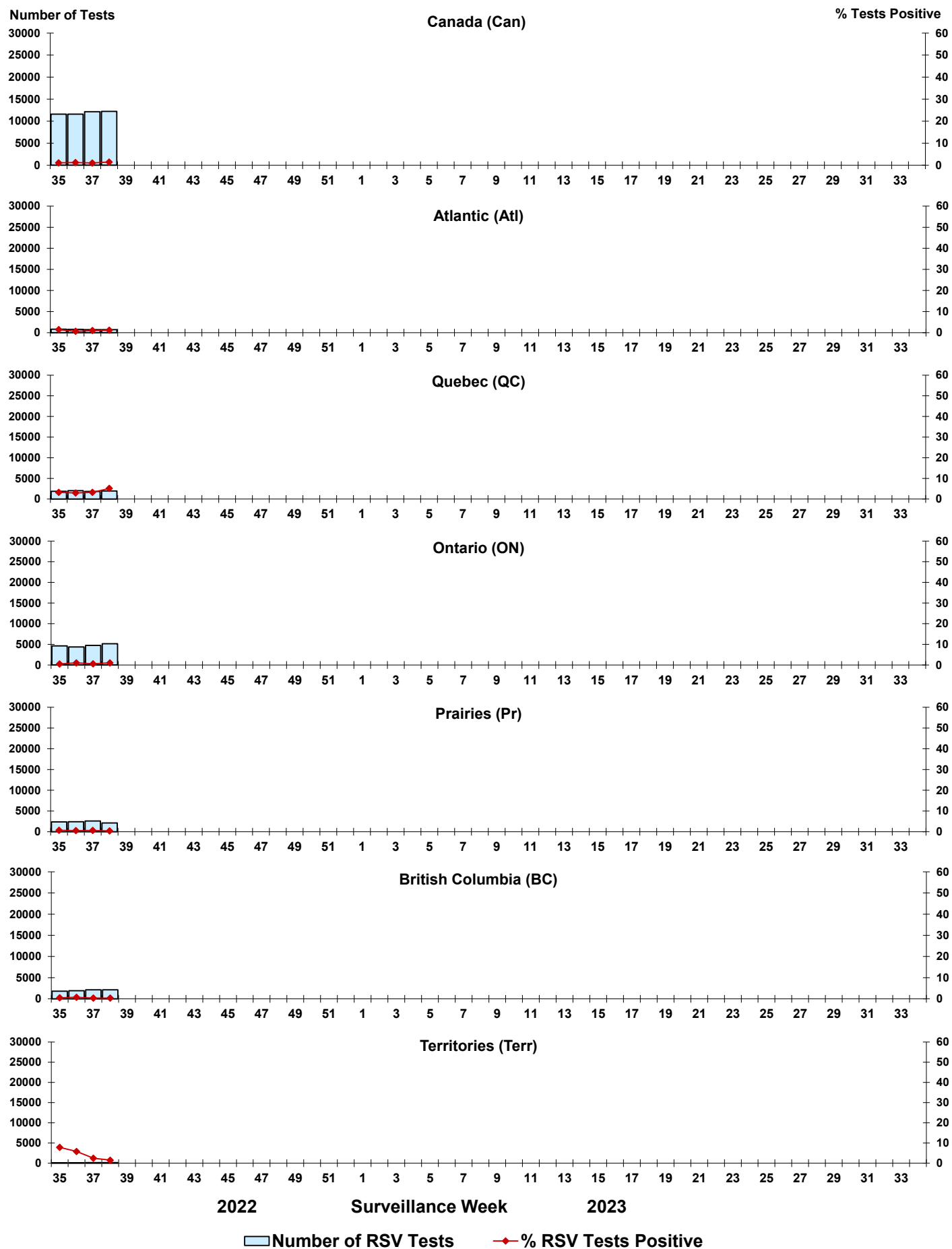


Figure 5: Positive Human parainfluenza virus (HPIV) tests (%) in Canada by region by surveillance week

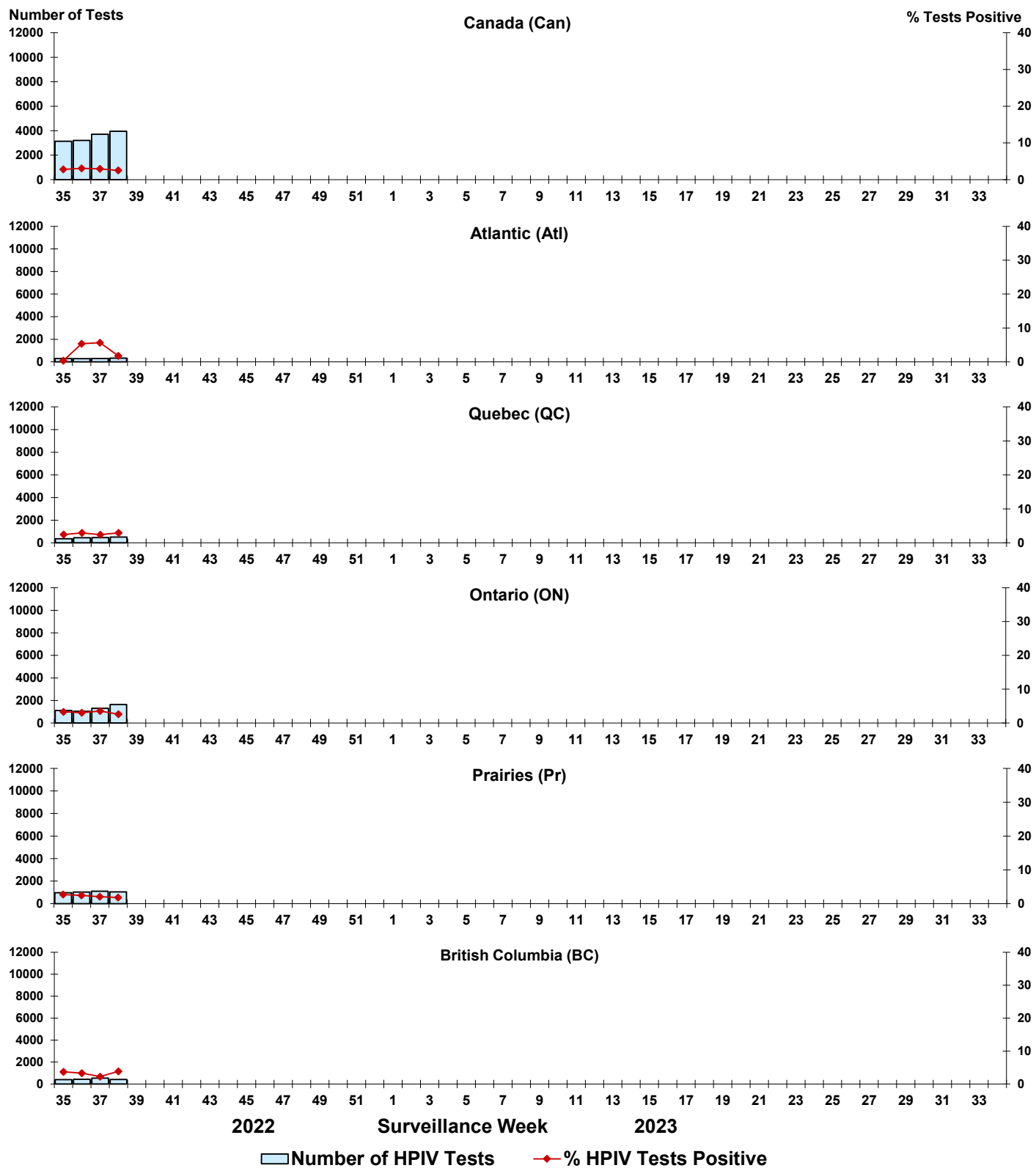


Figure 6: Positive Adenovirus (ADV) tests (%) in Canada by region by surveillance week

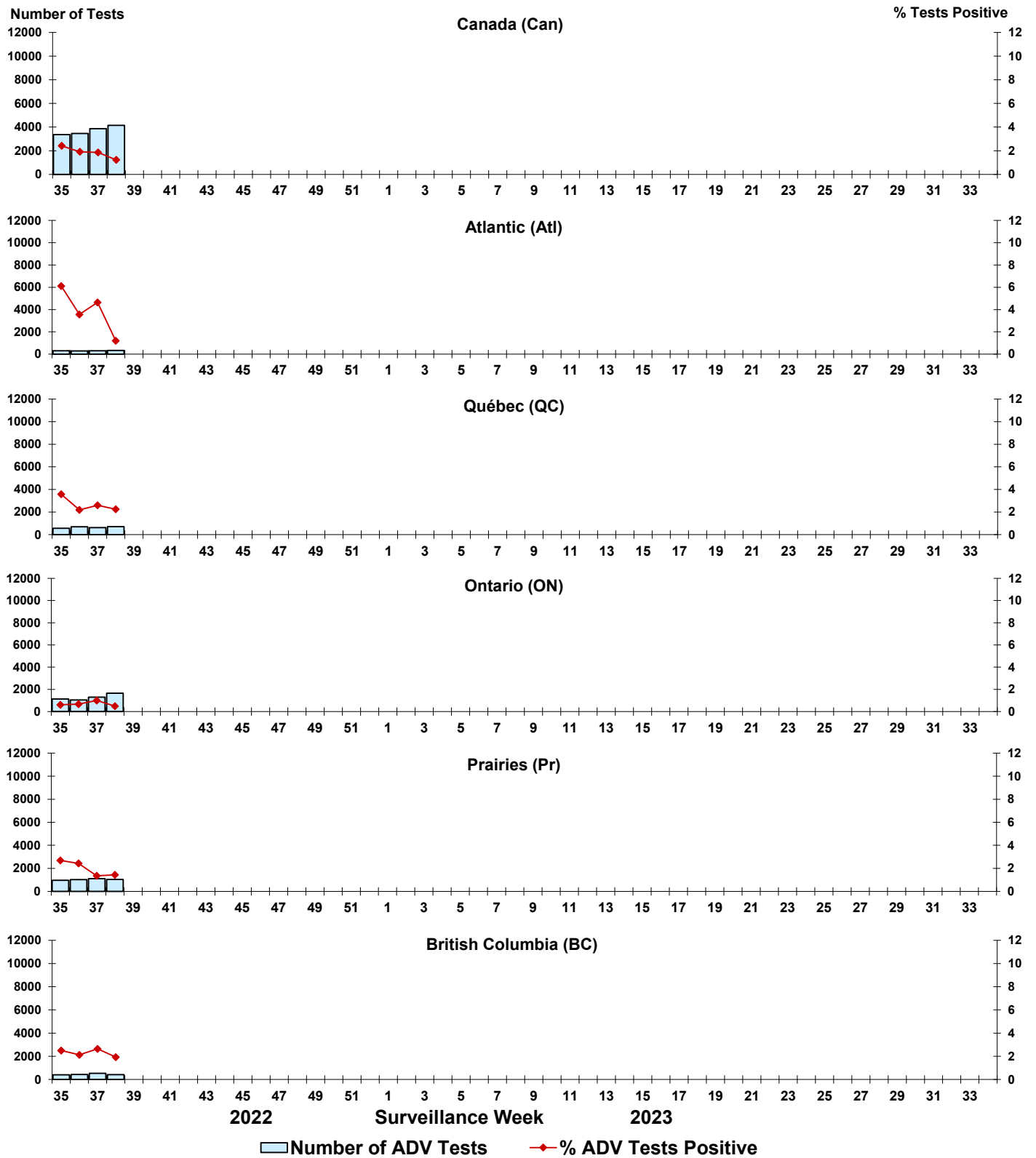


Figure 7: Positive Human metapneumovirus (HMPV) tests (%) in Canada by region by surveillance week

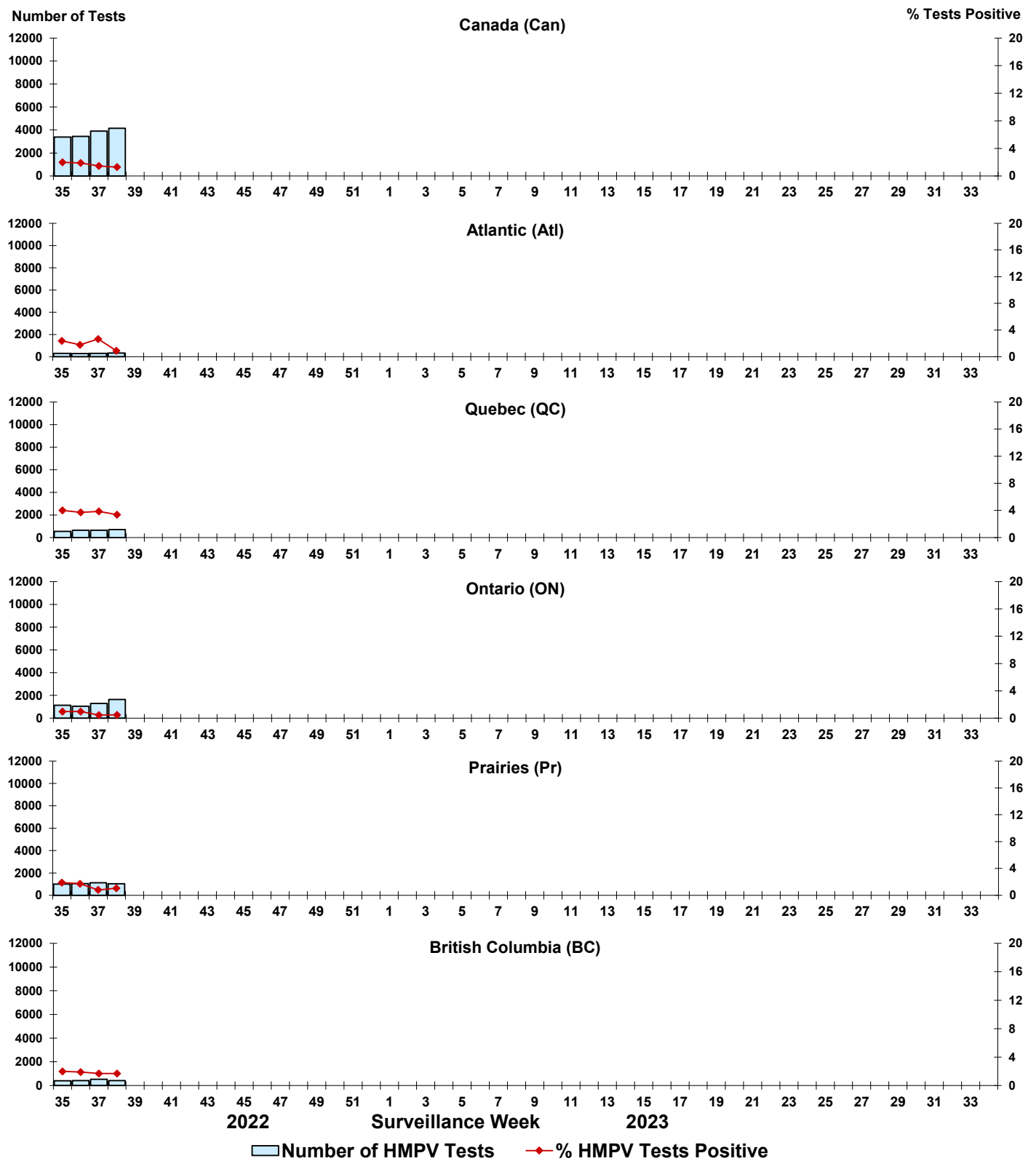


Figure 8: Positive Enterovirus/Rhinovirus (EV/RV) tests (%) in Canada by region by surveillance week

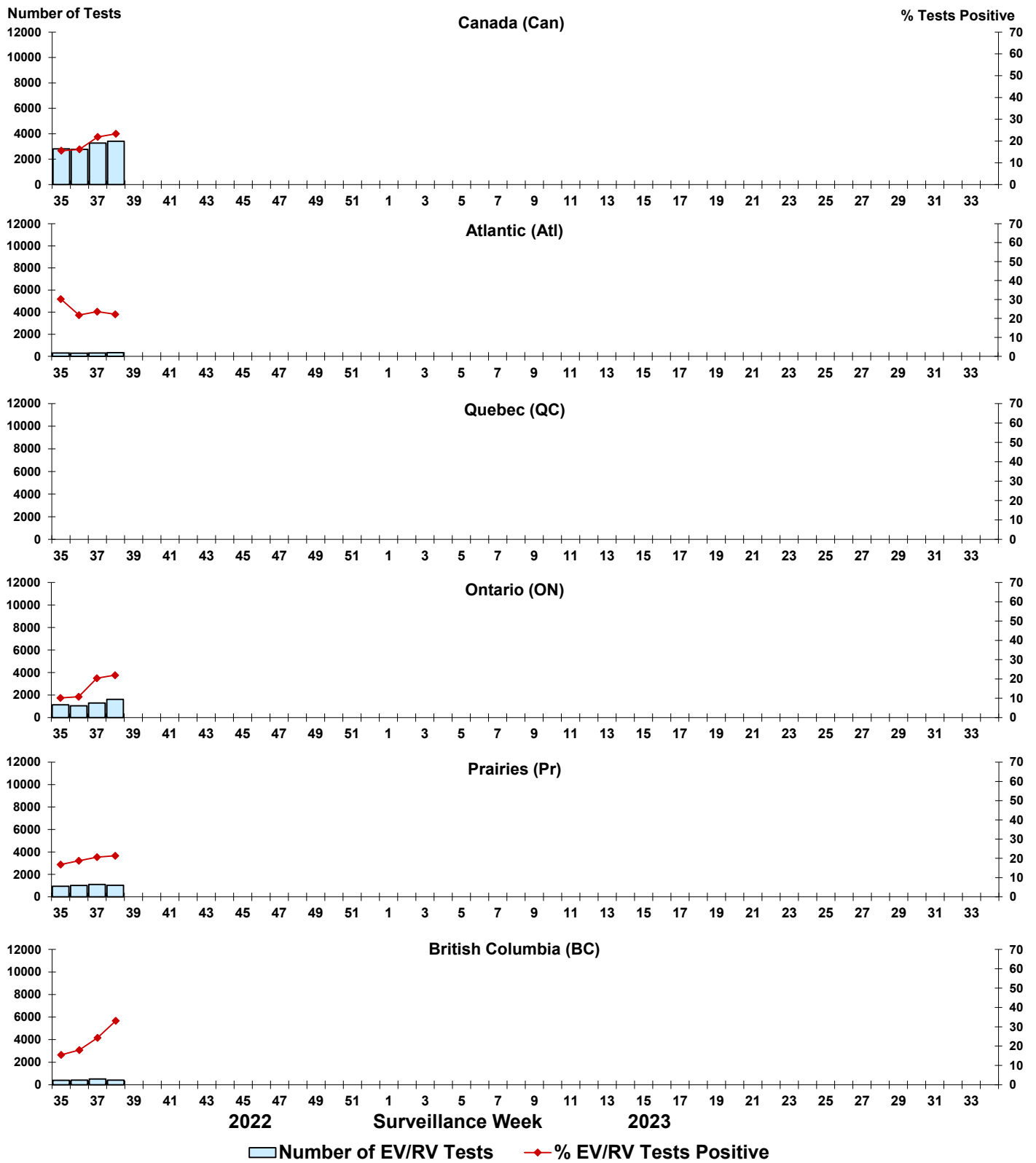


Figure 9: Positive Human coronavirus (HCoV) tests (%) in Canada by region by surveillance week

