

# RESPIRATORY VIRUS DETECTION REPORT

September 25 to October 1, 2022  
(Surveillance Week 2022-39)



In this Respiratory Virus Report, the number of detections of coronavirus reflects only seasonal human coronaviruses, not the novel pandemic coronavirus (SARS-CoV-2) that causes COVID-19. For information on COVID-19, see the [Coronavirus disease \(COVID-19\): Outbreak update](#).

## Overall Summary

Respiratory virus detections remain low in Canada, but are increasing. Activity of all viruses is near or below expected levels.

- Enterovirus/Rhinovirus remains the most common seasonal respiratory virus detected in Canada (894 detections; 22.6% positive), but activity is similar to previous weeks and remains below expected levels for this time of year.
- Detections of other respiratory viruses are low, but activity is near expected levels.
- 33/34 sentinel laboratories reported surveillance data.

### Abbreviations

Flu: Influenza

Flu A(H1N1)pdm09: Influenza A(H1N1)pdm09

Flu A(H3): Influenza A(H3N2)

Flu A (UnS): Influenza A(Unsubtyped)

RSV: Respiratory syncytial virus

HPIV: Human parainfluenza virus

HMPV: Human metapneumovirus

ADV: Adenovirus

EV/RV: Enterovirus/Rhinovirus

HCoV: Human coronavirus

Atl: Atlantic Canada

BC: British Columbia

Can: Canada

EORLA: Eastern Ontario Regional Laboratory Association

HSC: Health Sciences Centre

N.C.: Data not collected

N.R.: Data not reported for current week

ON: Ontario

PR: Prairies

P.H.O.L.: Public Health Ontario Laboratory

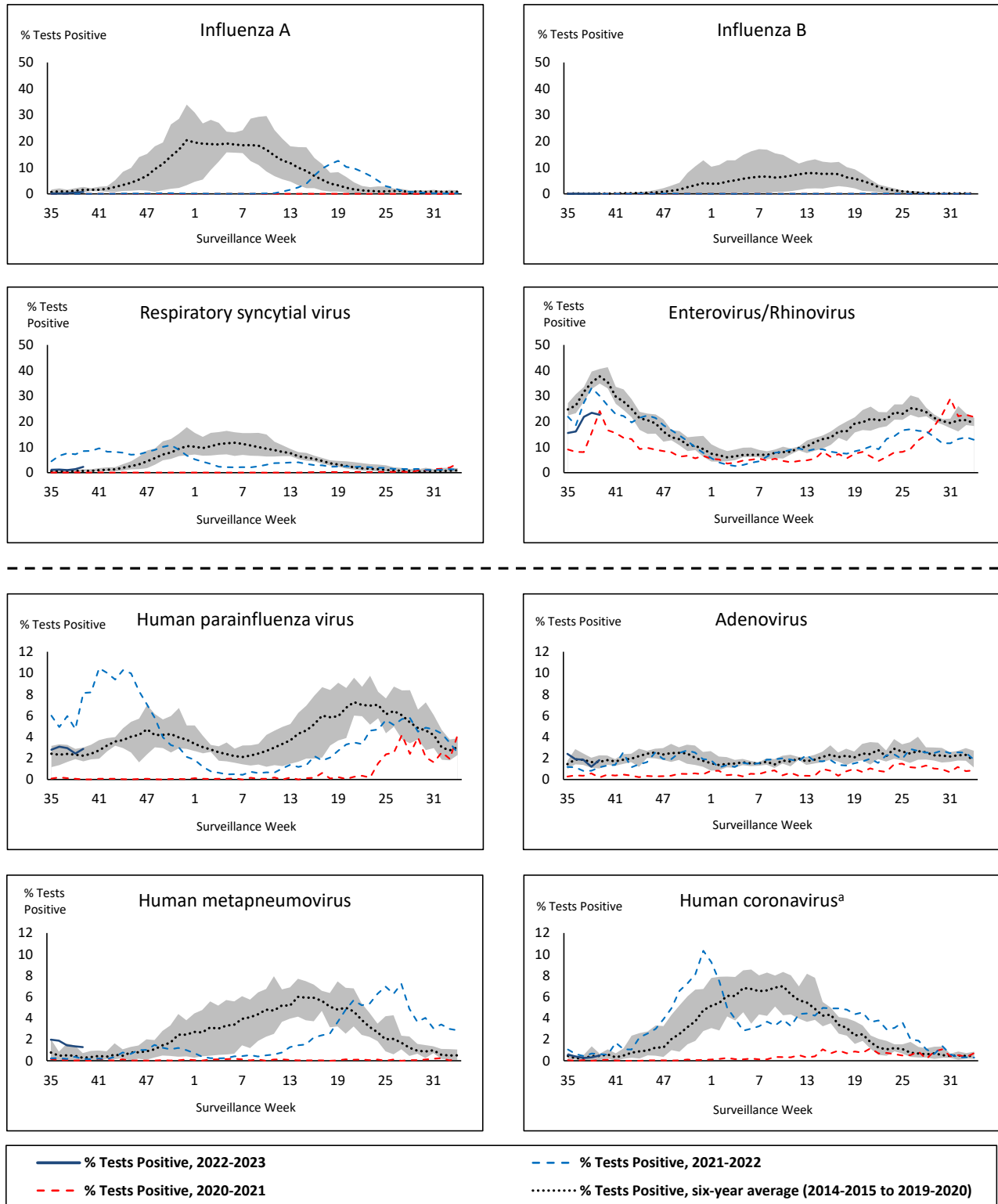
QC: Quebec

Terr: Territories of Canada

UHN: University Health Network



**Figure 1: Positive respiratory virus tests (%) reported by participating laboratories in Canada by surveillance week compared to average and range from 2014-2015 to 2019-2020 season**



Shaded area represents the maximum and minimum % of respiratory virus tests positive reported by week from seasons 2014-2015 to 2019-2020

Note: Data from week 11 of the 2019-2020 season onwards are excluded from the historical comparison due to the COVID-19 pandemic

Note: % Tests Positive scale changes across the dashed line

<sup>a</sup> Human coronavirus excludes human coronaviruses SARS-CoV, MERS-CoV and SARS-CoV-2; Includes seasonal human coronaviruses HCoV-229E, HCoV-OC43, HCoV-NL63, HCoV-HKU1.

**Table 1: Respiratory virus detections for the week ending October 1, 2022 (surveillance week 2022-39)**

Reporting Laboratory	Flu Tested	A(H1)pdm09 Positive	A(H3) Positive	A(UnS) Positive	Total Flu A Positive	Total Flu B Positive	RSV Tested	RSV Positive	HPIV Tested	HPIV 1 Positive	HPIV 2 Positive	HPIV 3 Positive	HPIV 4 Positive	Other HPIV Positive	ADV Tested	ADV Positive	HMPV Tested	HMPV Positive	EV/RV Tested	EV/RV Positive	HCoV Tested	HCoV Positive
Newfoundland	176	0	0	0	0	0	176	10	176	0	0	3	1	0	176	3	176	5	176	35	176	0
Prince Edward Island	28	0	0	0	0	0	28	0	28	0	0	0	0	0	28	1	28	0	28	15	28	0
Nova Scotia	179	0	0	2	2	1	179	6	41	0	0	0	0	0	41	2	41	0	41	8	41	0
New Brunswick	305	0	0	0	0	0	173	1	41	0	1	0	0	0	41	2	41	0	41	21	41	1
<b>Atlantic</b>	<b>688</b>	<b>0</b>	<b>0</b>	<b>2</b>	<b>2</b>	<b>1</b>	<b>556</b>	<b>17</b>	<b>286</b>	<b>0</b>	<b>1</b>	<b>3</b>	<b>1</b>	<b>0</b>	<b>286</b>	<b>8</b>	<b>286</b>	<b>5</b>	<b>286</b>	<b>79</b>	<b>286</b>	<b>1</b>
Région Nord-Est	604	0	0	0	0	0	153	5	8	0	0	0	0	0	8	0	8	0	N.C.	N.C.	8	0
Québec-Chaudière-Appalaches	436	0	0	1	1	0	438	25	37	1	1	2	0	0	276	5	276	7	N.C.	N.C.	155	1
Centre-du-Québec	310	0	0	0	0	0	280	20	147	0	0	1	0	0	147	3	147	3	N.C.	N.C.	147	0
Montréal-Laval	900	0	0	2	2	2	916	64	412	5	2	2	1	0	412	10	412	15	N.C.	N.C.	439	3
Ouest du Québec	249	0	0	0	0	0	249	21	16	0	0	1	0	0	16	2	16	0	N.C.	N.C.	16	0
Montréal	367	0	0	0	0	0	367	29	0	0	0	0	0	0	0	0	0	0	N.C.	N.C.	0	0
<b>Province of Québec</b>	<b>2866</b>	<b>0</b>	<b>0</b>	<b>3</b>	<b>3</b>	<b>2</b>	<b>2403</b>	<b>164</b>	<b>620</b>	<b>6</b>	<b>3</b>	<b>6</b>	<b>1</b>	<b>0</b>	<b>859</b>	<b>20</b>	<b>859</b>	<b>25</b>	<b>N.C.</b>	<b>N.C.</b>	<b>765</b>	<b>4</b>
P.H.O.L. - Ottawa	47	0	0	0	0	0	47	0	47	0	0	0	0	0	47	0	47	0	47	4	47	0
EORLA	269	0	0	3	3	0	269	12	58	0	0	2	0	0	58	2	58	3	58	28	58	0
P.H.O.L. - Kingston	61	0	0	0	0	0	61	3	61	0	0	0	0	1	61	1	61	0	61	7	61	0
UHN / Mount Sinai Hospital	450	0	0	2	2	0	450	5	5	0	0	0	0	0	5	0	5	0	5	0	5	0
P.H.O.L. - Toronto	380	4	19	1	3	0	379	6	379	0	0	0	0	22	379	9	379	2	379	84	379	1
Sick Kids Hospital - Toronto	N.R.	N.R.	N.R.	N.R.	N.R.	N.R.	N.R.	N.R.	N.R.	N.R.	N.R.	N.R.	N.R.	N.R.	N.R.	N.R.	N.R.	N.R.	N.R.	N.R.	N.R.	N.R.
Shared Hospital Laboratory	2872	0	0	24	24	0	2872	20	312	1	0	3	0	1	314	2	314	0	314	25	299	0
P.H.O.L. - Sault Ste. Marie	10	0	0	0	0	0	10	0	10	0	0	0	0	0	10	0	10	0	10	1	10	0
P.H.O.L. - Timmins	5	0	0	0	0	0	5	0	5	0	0	0	0	0	5	0	5	0	5	0	5	1
St. Joseph's - London	62	0	0	0	0	0	62	1	62	0	0	0	0	2	62	1	62	0	62	23	8	0
P.H.O.L. - London	106	0	1	0	1	0	106	2	106	0	0	0	0	3	106	2	106	0	106	30	106	1
P.H.O.L. - Orillia	24	0	0	1	1	0	24	1	24	0	0	0	0	4	24	0	24	0	24	8	24	0
P.H.O.L. - Thunder Bay	12	0	0	0	0	0	12	0	12	0	0	0	0	0	12	0	12	0	12	4	12	1
P.H.O.L. - Sudbury	12	0	0	0	0	0	12	0	12	0	0	0	0	0	12	0	12	0	12	0	12	0
P.H.O.L. - Hamilton	66	0	1	0	1	0	66	3	66	0	0	0	0	7	66	1	66	0	66	20	66	0
P.H.O.L. - Peterborough	20	0	0	0	0	0	20	2	20	0	0	0	0	1	20	1	20	0	20	10	20	0
St. Joseph's - Hamilton	762	0	0	2	2	1	762	21	762	0	0	25	0	0	762	0	762	4	762	138	0	0
<b>Province of Ontario</b>	<b>5158</b>	<b>4</b>	<b>21</b>	<b>33</b>	<b>37</b>	<b>1</b>	<b>5157</b>	<b>76</b>	<b>1941</b>	<b>1</b>	<b>0</b>	<b>30</b>	<b>0</b>	<b>41</b>	<b>1943</b>	<b>19</b>	<b>1943</b>	<b>9</b>	<b>1943</b>	<b>382</b>	<b>1112</b>	<b>4</b>
Manitoba	466	0	0	0	0	0	466	3	127	0	0	1	0	0	127	5	141	2	127	27	141	0
Saskatchewan	428	0	0	0	0	0	428	0	190	0	1	4	0	0	190	9	190	6	190	55	190	1
Alberta	2128	6	11	3	20	0	1895	18	948	3	3	10	1	0	948	12	948	6	932	191	948	8
<b>Prairies</b>	<b>3022</b>	<b>6</b>	<b>11</b>	<b>3</b>	<b>20</b>	<b>0</b>	<b>2789</b>	<b>21</b>	<b>1265</b>	<b>3</b>	<b>4</b>	<b>15</b>	<b>1</b>	<b>0</b>	<b>1265</b>	<b>26</b>	<b>1279</b>	<b>14</b>	<b>1249</b>	<b>273</b>	<b>1279</b>	<b>9</b>
<b>British Columbia</b>	<b>1952</b>	<b>7</b>	<b>3</b>	<b>1</b>	<b>30</b>	<b>0</b>	<b>1853</b>	<b>13</b>	<b>460</b>	<b>1</b>	<b>6</b>	<b>5</b>	<b>1</b>	<b>2</b>	<b>460</b>	<b>14</b>	<b>460</b>	<b>9</b>	<b>443</b>	<b>145</b>	<b>443</b>	<b>1</b>
Yukon	4	0	0	0	0	0	4	0	N.C.	N.C.	N.C.	N.C.	N.C.	N.C.	N.C.	N.C.	N.C.	N.C.	N.C.	N.C.	N.C.	N.C.
Northwest Territories	32	0	0	0	0	0	32	0	0	0	0	0	0	0	0	0	0	0	32	15	0	0
Nunavut	77	0	0	4	4	0	77	1	N.C.	N.C.	N.C.	N.C.	N.C.	N.C.	N.C.	N.C.	N.C.	N.C.	N.C.	N.C.	N.C.	N.C.
<b>Territories</b>	<b>113</b>	<b>0</b>	<b>0</b>	<b>4</b>	<b>4</b>	<b>0</b>	<b>113</b>	<b>1</b>	<b>0</b>	<b>0</b>	<b>0</b>	<b>0</b>	<b>0</b>	<b>0</b>	<b>0</b>	<b>0</b>	<b>0</b>	<b>0</b>	<b>32</b>	<b>15</b>	<b>0</b>	<b>0</b>
<b>CANADA</b>	<b>13799</b>	<b>17</b>	<b>35</b>	<b>46</b>	<b>96</b>	<b>4</b>	<b>12871</b>	<b>292</b>	<b>4572</b>	<b>11</b>	<b>14</b>	<b>59</b>	<b>4</b>	<b>43</b>	<b>4813</b>	<b>87</b>	<b>4827</b>	<b>62</b>	<b>3953</b>	<b>894</b>	<b>3885</b>	<b>19</b>

The data in the RVDSS report represent surveillance data available at the time of writing. Data missing from the current week are denoted by N.R. Data not collected by reporting lab denoted by N.C.

Specimens from Yukon (YT) are sent to reference laboratories in British Columbia and reported results reflect specimens identified as originating from YT.

Results from British Columbia comprise of specimens from the following sites: Children's and Women's Hospital Laboratory, Fraser Health Medical Microbiology Laboratory, Island Health, Providence Health Care, Vancouver General Hospital, Vancouver Coastal Health sites, Victoria General Hospital, BCCDC Public Health Laboratory, Interior Health Authority sites and Northern Health Authority sites.

Delays in the reporting of data may cause data to change retrospectively.

Due to different testing protocols of laboratories across Canada, influenza A subtype detection counts may not be included in total influenza A detection counts. Some subtype detections are not available through routine testing but are subsequently reported if further subtype testing is conducted. In these instances, subtype counts do not reflect influenza A detections intended to be captured by routine surveillance, and are excluded from total detections and percent positivity.

**Table 2: Cumulative respiratory virus detections from August 28, 2022 to October 1, 2022 (surveillance weeks 2022-35 to 2022-39)**

Reporting Laboratory	Flu Tested	A(H1)pdm09 Positive	A(H3) Positive	A(UnS) Positive	Total Flu A Positive	Total Flu B Positive	RSV Tested	RSV Positive	HPIV Tested	HPIV 1 Positive	HPIV 2 Positive	HPIV 3 Positive	HPIV 4 Positive	Other HPIV Positive	ADV Tested	ADV Positive	HMPV Tested	HMPV Positive	EV/RV Tested	EV/RV Positive	HCoV Tested	HCoV Positive
Newfoundland	841	0	1	0	1	0	841	22	841	2	2	6	3	0	841	9	841	26	841	114	841	0
Prince Edward Island	193	0	0	0	0	0	193	3	193	0	2	9	0	0	193	11	193	1	193	119	193	1
Nova Scotia	1313	0	0	4	4	1	1312	13	207	0	0	1	1	0	207	8	207	0	207	54	207	0
New Brunswick	1821	0	0	0	0	1	1255	11	254	0	2	15	1	0	254	26	254	1	254	87	254	4
<b>Atlantic</b>	<b>4168</b>	<b>0</b>	<b>1</b>	<b>4</b>	<b>5</b>	<b>2</b>	<b>3601</b>	<b>49</b>	<b>1495</b>	<b>2</b>	<b>6</b>	<b>31</b>	<b>5</b>	<b>0</b>	<b>1495</b>	<b>54</b>	<b>1495</b>	<b>28</b>	<b>1495</b>	<b>374</b>	<b>1495</b>	<b>5</b>
Région Nord-Est	3001	0	0	2	2	0	694	15	25	1	1	0	0	0	24	2	24	0	N.C.	N.C.	21	1
Québec-Chaudière-Appalaches	1861	0	0	3	3	1	1784	69	161	2	2	6	1	0	1184	19	1174	25	N.C.	N.C.	646	5
Centre-du-Québec	1179	0	0	1	1	2	1068	43	307	3	0	1	0	0	307	5	307	9	N.C.	N.C.	307	0
Montréal-Laval	3892	0	0	9	9	3	3664	180	1826	20	5	18	1	0	1826	51	1826	85	N.C.	N.C.	1762	5
Ouest du Québec	1231	0	0	3	3	0	1155	59	83	1	0	2	0	0	92	10	83	1	N.C.	N.C.	83	2
Montérégie	1947	0	0	3	3	1	1730	79	0	0	0	0	0	0	0	0	0	0	N.C.	N.C.	0	0
<b>Province of Québec</b>	<b>13111</b>	<b>0</b>	<b>0</b>	<b>21</b>	<b>21</b>	<b>7</b>	<b>10095</b>	<b>445</b>	<b>2402</b>	<b>27</b>	<b>8</b>	<b>27</b>	<b>2</b>	<b>0</b>	<b>3433</b>	<b>87</b>	<b>3414</b>	<b>120</b>	<b>N.C.</b>	<b>N.C.</b>	<b>2819</b>	<b>13</b>
P.H.O.L. - Ottawa	150	0	0	0	0	0	150	1	150	0	0	0	0	1	150	0	150	2	150	12	150	0
EORLA	1149	0	0	5	5	0	1149	30	198	3	0	3	1	0	198	5	198	4	198	74	198	1
P.H.O.L. - Kingston	190	0	0	0	0	0	190	6	190	0	0	0	0	4	190	4	190	0	190	45	190	0
UHN / Mount Sinai Hospital	1957	0	0	8	8	1	1957	7	52	0	0	0	0	0	52	0	52	0	52	1	52	2
P.H.O.L. - Toronto	1358	12	44	1	10	0	1357	11	1357	0	0	0	0	69	1358	21	1357	10	1357	218	1357	5
Sick Kids Hospital - Toronto	0	0	0	0	0	0	0	0	0	0	0	0	0	0	0	0	0	0	0	0	0	0
Shared Hospital Laboratory	14631	0	0	46	46	0	14631	73	532	3	0	6	0	3	536	5	535	0	508	38	427	1
P.H.O.L. - Sault Ste. Marie	25	0	0	0	0	0	25	0	25	0	0	0	0	0	25	0	25	0	25	1	25	0
P.H.O.L. - Timmins	48	0	0	0	0	0	48	0	48	0	0	0	0	0	48	0	48	0	48	15	48	1
St. Joseph's - London	265	0	0	0	0	0	265	5	231	0	0	0	0	5	265	2	265	0	265	61	21	0
P.H.O.L. - London	393	0	4	0	4	0	393	10	393	0	0	0	0	13	393	9	393	2	393	89	393	2
P.H.O.L. - Orillia	106	0	1	1	2	0	106	3	106	0	0	0	0	6	106	2	106	4	106	48	106	0
P.H.O.L. - Thunder Bay	43	0	0	0	0	0	43	0	43	0	0	0	0	1	43	0	43	0	43	22	43	1
P.H.O.L. - Sudbury	37	0	0	0	0	0	37	0	37	0	0	0	0	1	37	0	37	0	37	7	37	0
P.H.O.L. - Hamilton	293	0	1	0	1	0	293	8	293	0	0	0	0	17	293	4	293	0	293	60	293	0
P.H.O.L. - Peterborough	81	0	0	0	0	0	81	6	81	0	0	0	0	5	81	2	81	1	81	32	81	0
St. Joseph's - Hamilton	3300	0	0	6	6	2	3300	65	3300	0	0	89	0	0	3300	0	3300	21	3300	509	0	0
<b>Province of Ontario</b>	<b>24026</b>	<b>12</b>	<b>50</b>	<b>67</b>	<b>82</b>	<b>3</b>	<b>24025</b>	<b>225</b>	<b>7036</b>	<b>6</b>	<b>0</b>	<b>98</b>	<b>1</b>	<b>125</b>	<b>7075</b>	<b>54</b>	<b>7073</b>	<b>44</b>	<b>7046</b>	<b>1232</b>	<b>3421</b>	<b>13</b>
Manitoba	2643	0	0	2	2	0	2643	14	623	0	2	8	0	0	623	22	716	23	623	177	716	1
Saskatchewan	2221	0	0	3	3	0	2220	5	932	0	3	25	5	0	934	36	936	36	934	141	932	4
Alberta	9135	13	22	10	45	4	8136	57	4087	11	8	53	4	0	4086	52	4085	20	4007	802	4087	23
<b>Prairies</b>	<b>13999</b>	<b>13</b>	<b>22</b>	<b>15</b>	<b>50</b>	<b>4</b>	<b>12999</b>	<b>76</b>	<b>5642</b>	<b>11</b>	<b>13</b>	<b>86</b>	<b>9</b>	<b>0</b>	<b>5643</b>	<b>110</b>	<b>5737</b>	<b>79</b>	<b>5564</b>	<b>1120</b>	<b>5735</b>	<b>28</b>
<b>British Columbia</b>	<b>10486</b>	<b>15</b>	<b>20</b>	<b>1</b>	<b>70</b>	<b>3</b>	<b>9840</b>	<b>51</b>	<b>2362</b>	<b>3</b>	<b>14</b>	<b>39</b>	<b>14</b>	<b>5</b>	<b>2362</b>	<b>55</b>	<b>2362</b>	<b>41</b>	<b>2315</b>	<b>580</b>	<b>2315</b>	<b>5</b>
Yukon	33	0	0	0	0	0	33	0	N.C.	N.C.	N.C.	N.C.	N.C.	N.C.	N.C.	N.C.	N.C.	N.C.	N.C.	N.C.	N.C.	N.C.
Northwest Territories	156	0	0	0	0	0	156	6	0	0	0	0	0	0	0	0	0	0	156	72	0	0
Nunavut	381	3	0	4	7	0	381	14	N.C.	N.C.	N.C.	N.C.	N.C.	N.C.	N.C.	N.C.	N.C.	N.C.	N.C.	N.C.	N.C.	N.C.
<b>Territories</b>	<b>570</b>	<b>3</b>	<b>0</b>	<b>4</b>	<b>7</b>	<b>0</b>	<b>570</b>	<b>20</b>	<b>0</b>	<b>0</b>	<b>0</b>	<b>0</b>	<b>0</b>	<b>0</b>	<b>0</b>	<b>0</b>	<b>0</b>	<b>0</b>	<b>156</b>	<b>72</b>	<b>0</b>	<b>0</b>
<b>CANADA</b>	<b>66360</b>	<b>43</b>	<b>93</b>	<b>112</b>	<b>235</b>	<b>19</b>	<b>61130</b>	<b>866</b>	<b>18937</b>	<b>49</b>	<b>41</b>	<b>281</b>	<b>31</b>	<b>130</b>	<b>20008</b>	<b>360</b>	<b>20081</b>	<b>312</b>	<b>16576</b>	<b>3378</b>	<b>15785</b>	<b>64</b>

The data in the RVDSS report represent surveillance data available at the time of writing. Data not collected by reporting lab denoted by N.C.

Specimens from Yukon (YT) are sent to reference laboratories in British Columbia and reported results reflect specimens identified as originating from YT.

Results from British Columbia comprise of specimens from the following sites: Children's and Women's Hospital Laboratory, Fraser Health Medical Microbiology Laboratory, Island Health, Providence Health Care, Vancouver General Hospital, Vancouver Coastal Health sites, Victoria General Hospital, BCCDC Public Health Laboratory, Interior Health Authority sites and Northern Health Authority sites.

Delays in the reporting of data may cause data to change retrospectively. Due to these delays, the sum of weekly report totals do not add up to cumulative totals.

Due to different testing protocols of laboratories across Canada, influenza A subtype detection counts may not be included in total influenza A detection counts. Some subtype detections are not available through routine testing but are subsequently reported if further subtype testing is conducted. In these instances, subtype counts do not reflect influenza A detections intended to be captured by routine surveillance, and are excluded from total detections and percent positivity.

**Figure 2: Number of positive respiratory virus tests reported by participating laboratories in Canada by surveillance week**

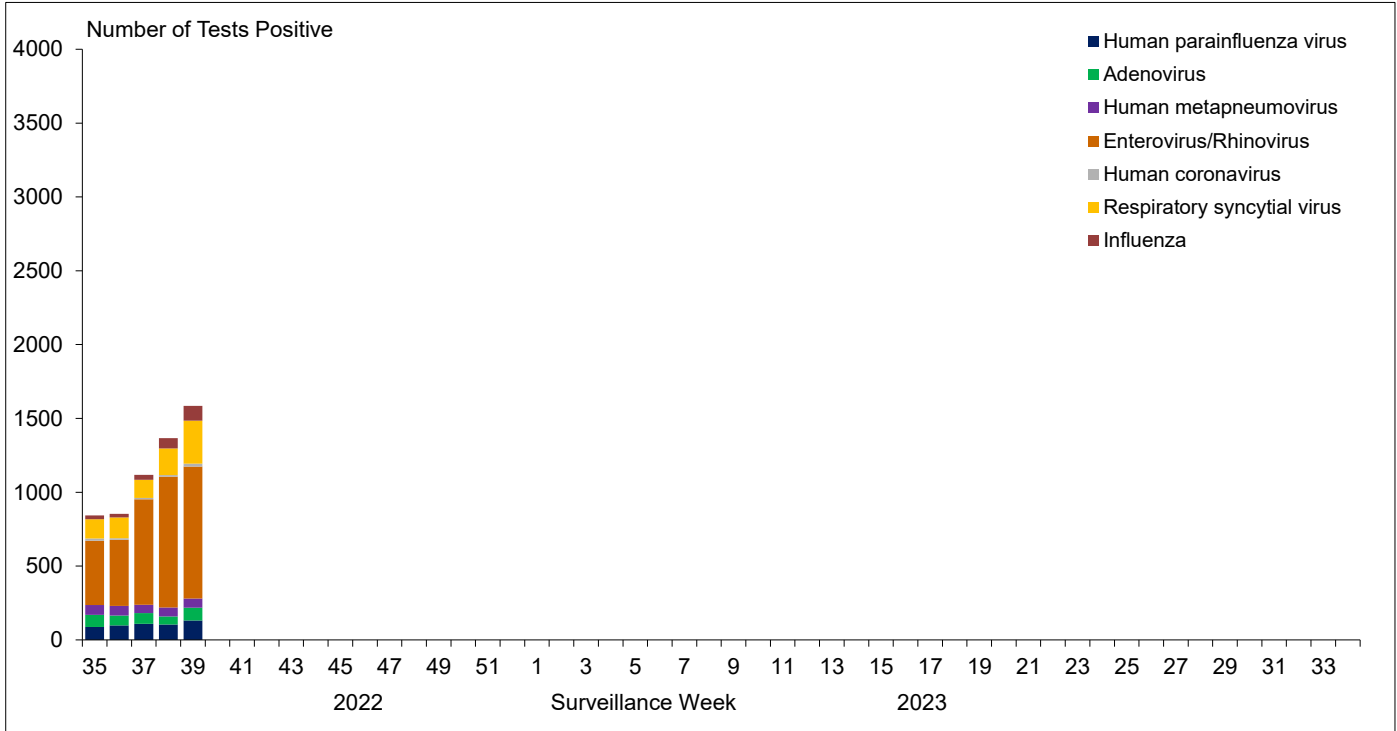


Figure 3: Positive Influenza (Flu) tests (%) in Canada by region by surveillance week

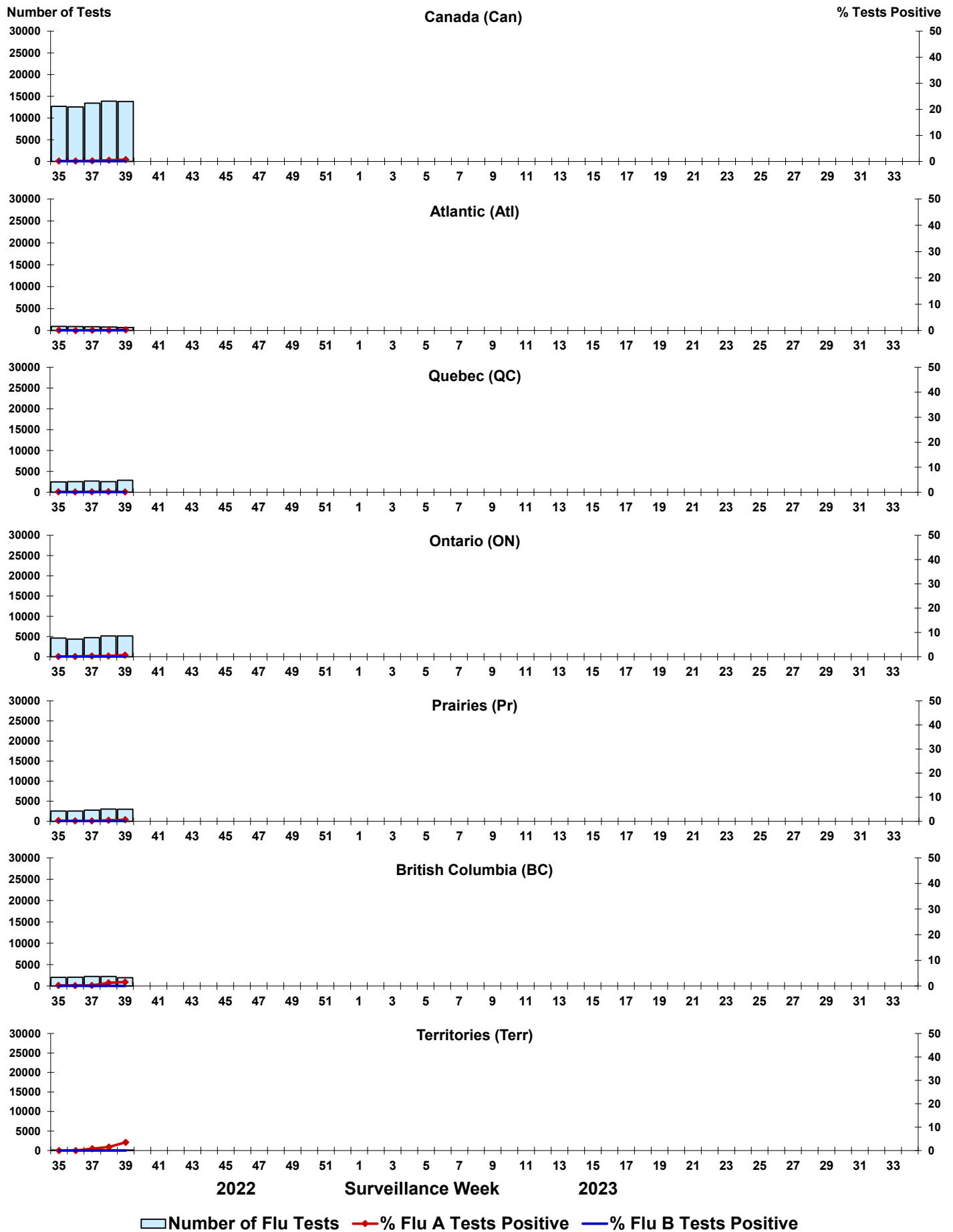


Figure 4: Positive Respiratory syncytial virus (RSV) tests (%) in Canada by region by surveillance week

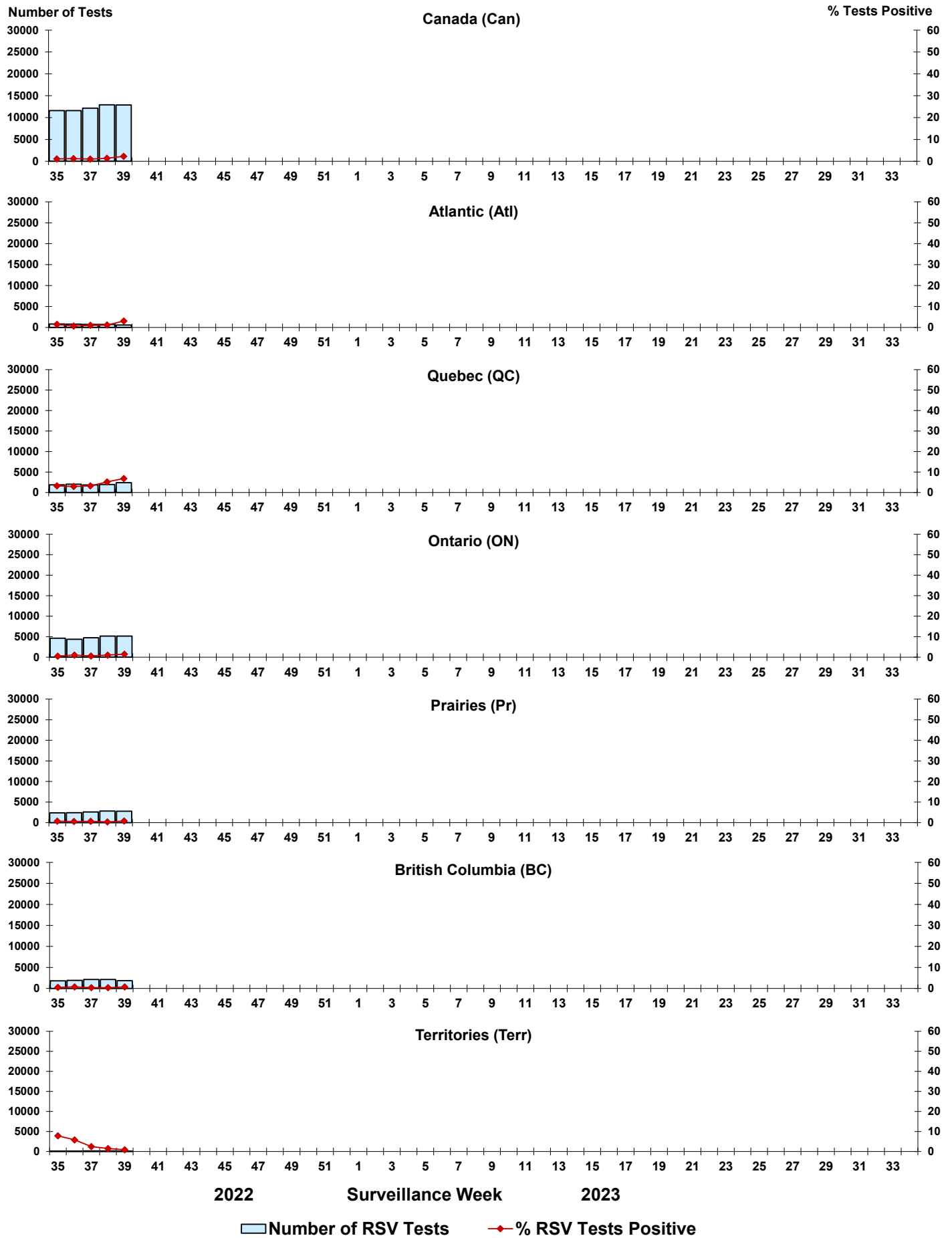


Figure 5: Positive Human parainfluenza virus (HPIV) tests (%) in Canada by region by surveillance week

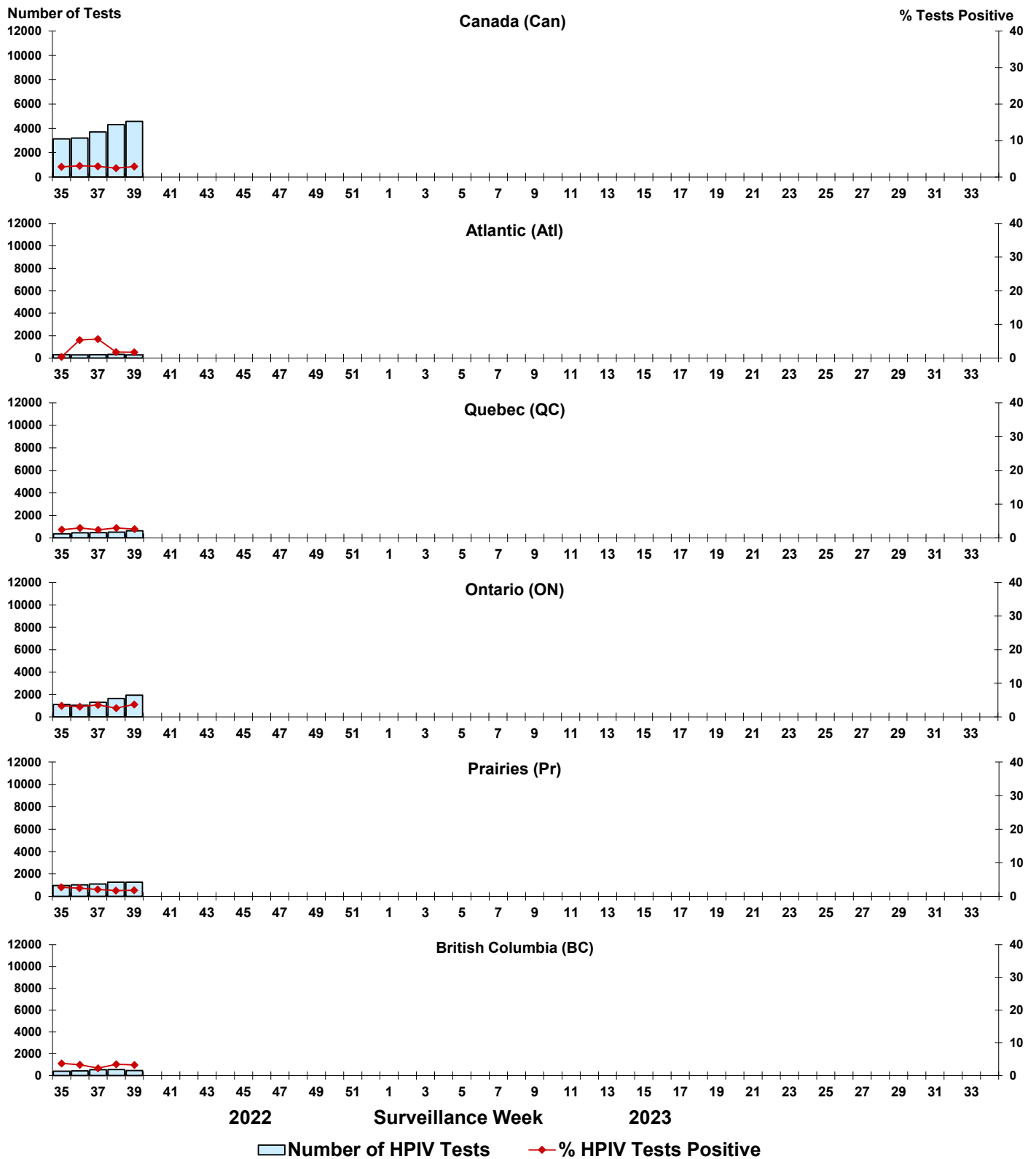




Figure 6: Positive Adenovirus (ADV) tests (%) in Canada by region by surveillance week

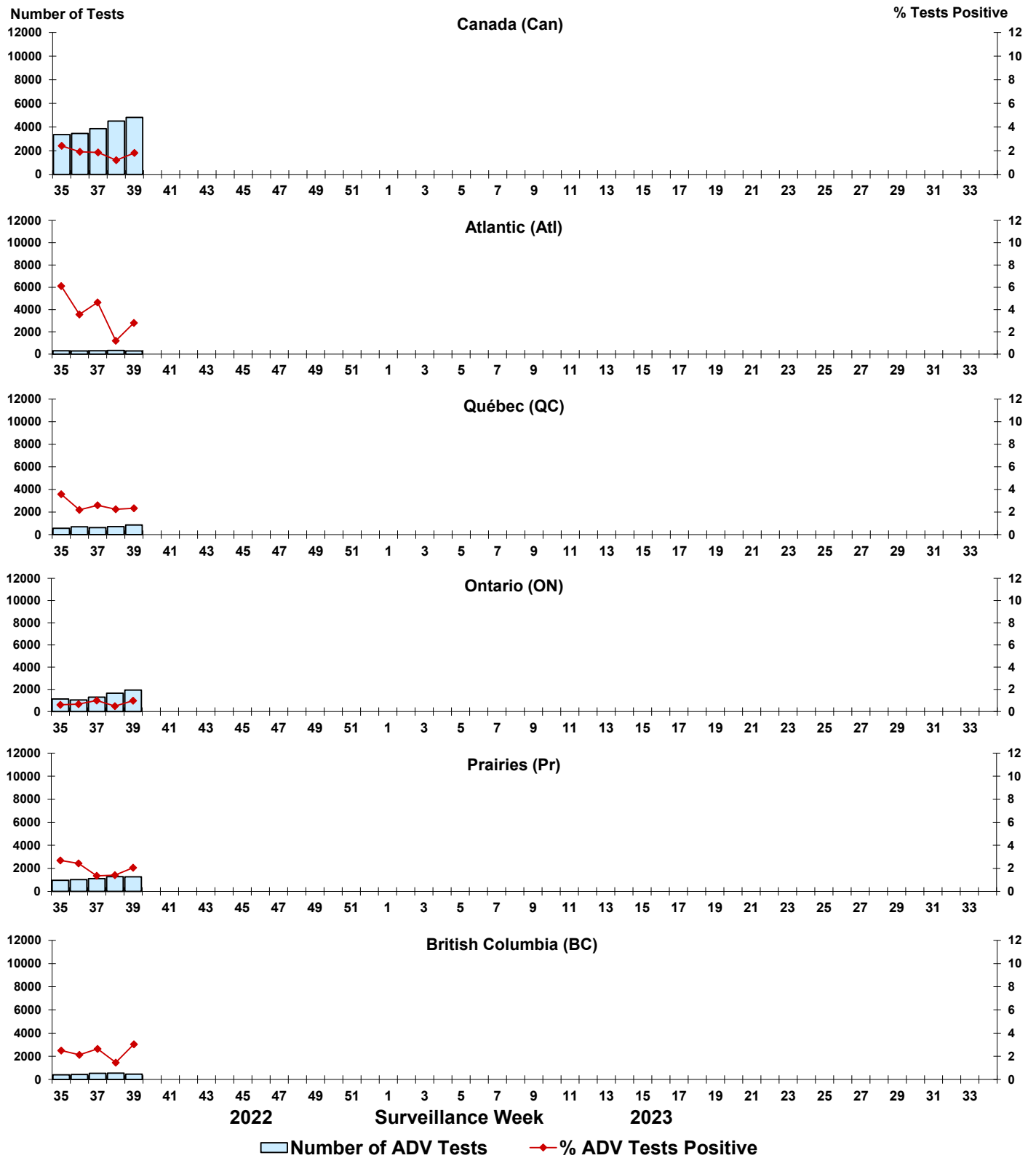


Figure 7: Positive Human metapneumovirus (HMPV) tests (%) in Canada by region by surveillance week

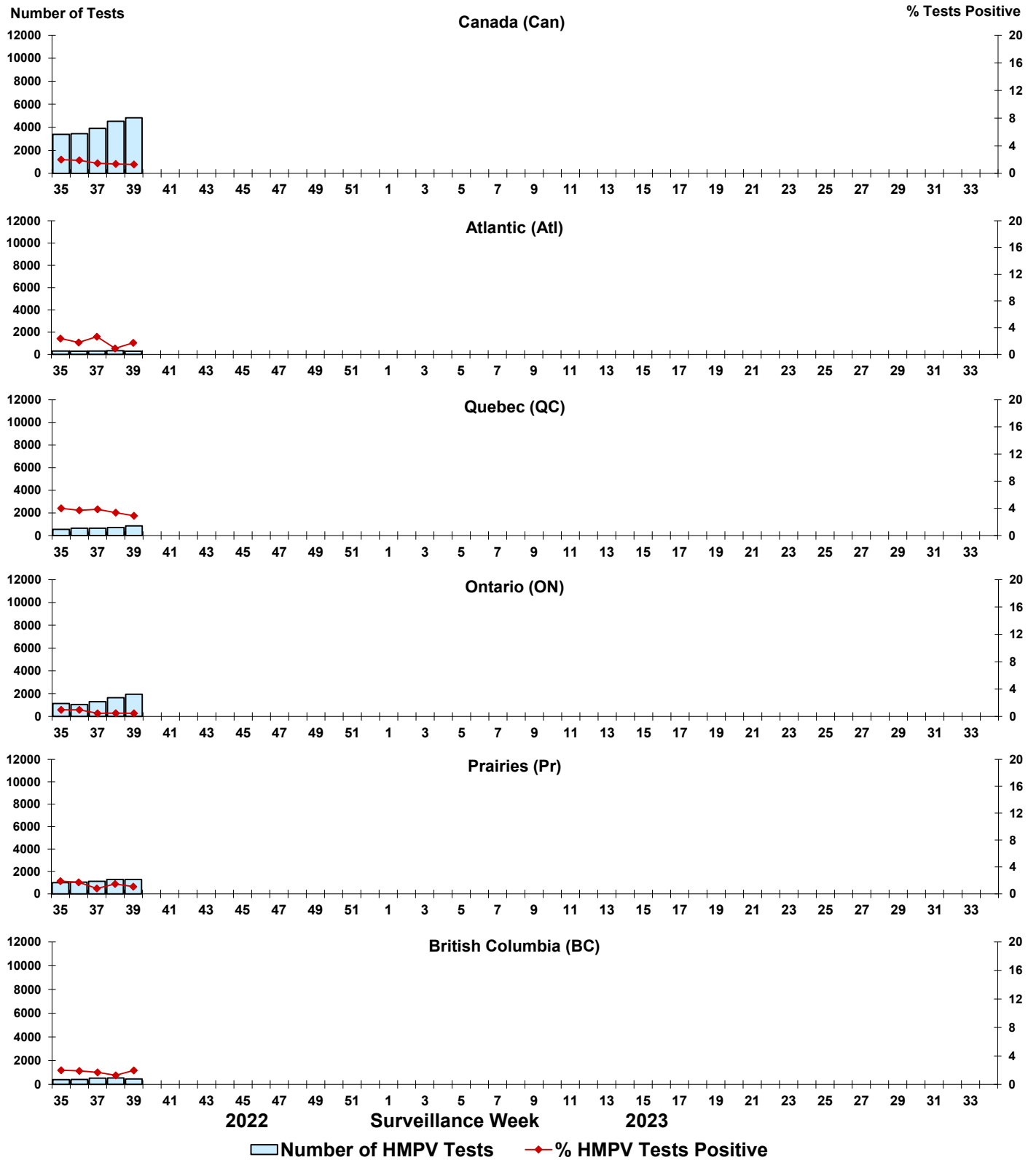


Figure 8: Positive Enterovirus/Rhinovirus (EV/RV) tests (%) in Canada by region by surveillance week

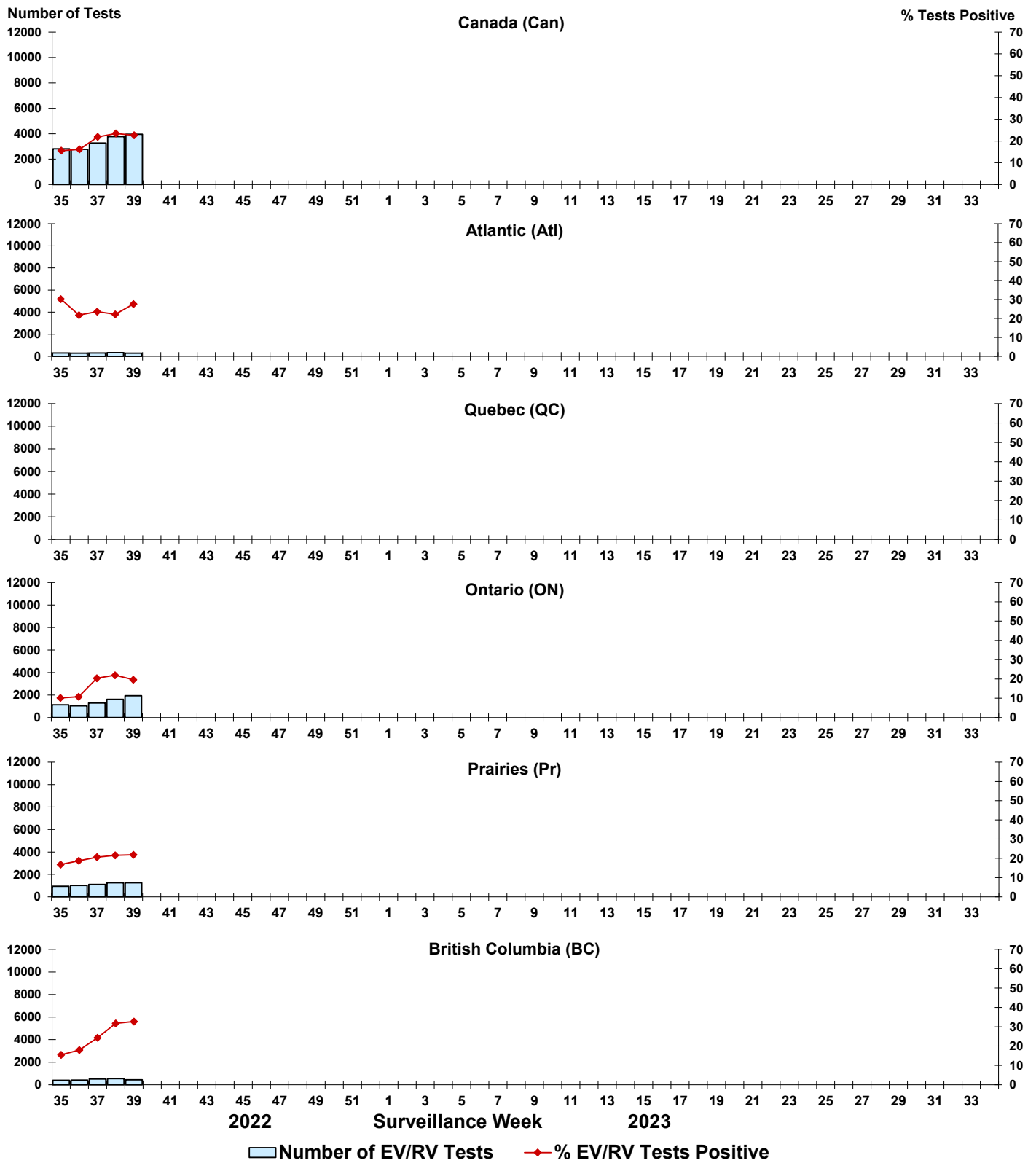


Figure 9: Positive Human coronavirus (HCoV) tests (%) in Canada by region by surveillance week

