

RESPIRATORY VIRUS DETECTION REPORT

January 30 to February 05, 2022
(Surveillance Week 2022-05)



In this Respiratory Virus Report, the number of detections of coronavirus reflects only seasonal human coronaviruses, not the novel pandemic coronavirus (SARS-CoV-2) that causes COVID-19. For information on COVID-19, see the [Coronavirus disease \(COVID-19\): Outbreak update](#).

Overall Summary

Detections of seasonal respiratory viruses have dropped sharply since the end of December 2021. In week 5 (January 30 to February 5, 2022), activity of all respiratory viruses is within or below expected levels for this time of year.

- Respiratory syncytial virus (254 detections; 2.1% positive) is the most common seasonal respiratory viruses detected in Canada. Activity has decreased in recent weeks and is below expected levels.
- Detections of other respiratory viruses are low.
- The number of tests performed for each virus is within expected levels.
 - Due to the current COVID-19 pandemic, changes in laboratory testing practices for the past week may affect the comparability of data to previous weeks.
- 30/34 sentinel laboratories reported surveillance data.

Abbreviations

Flu: Influenza

Flu A(H1N1)pdm09: Influenza A(H1N1)pdm09

Flu A(H3): Influenza A(H3N2)

Flu A (UnS): Influenza A(Unsubtyped)

RSV: Respiratory syncytial virus

HPIV: Human parainfluenza virus

HMPV: Human metapneumovirus

ADV: Adenovirus

EV/RV: Enterovirus/Rhinovirus

HCoV: Human coronavirus

Atl: Atlantic Canada

BC: British Columbia

Can: Canada

EORLA: Eastern Ontario Regional Laboratory Association

HSC: Health Sciences Centre

N.C.: Data not collected

N.R.: Data not reported for current week

ON: Ontario

PR: Prairies

P.H.O.L.: Public Health Ontario Laboratory

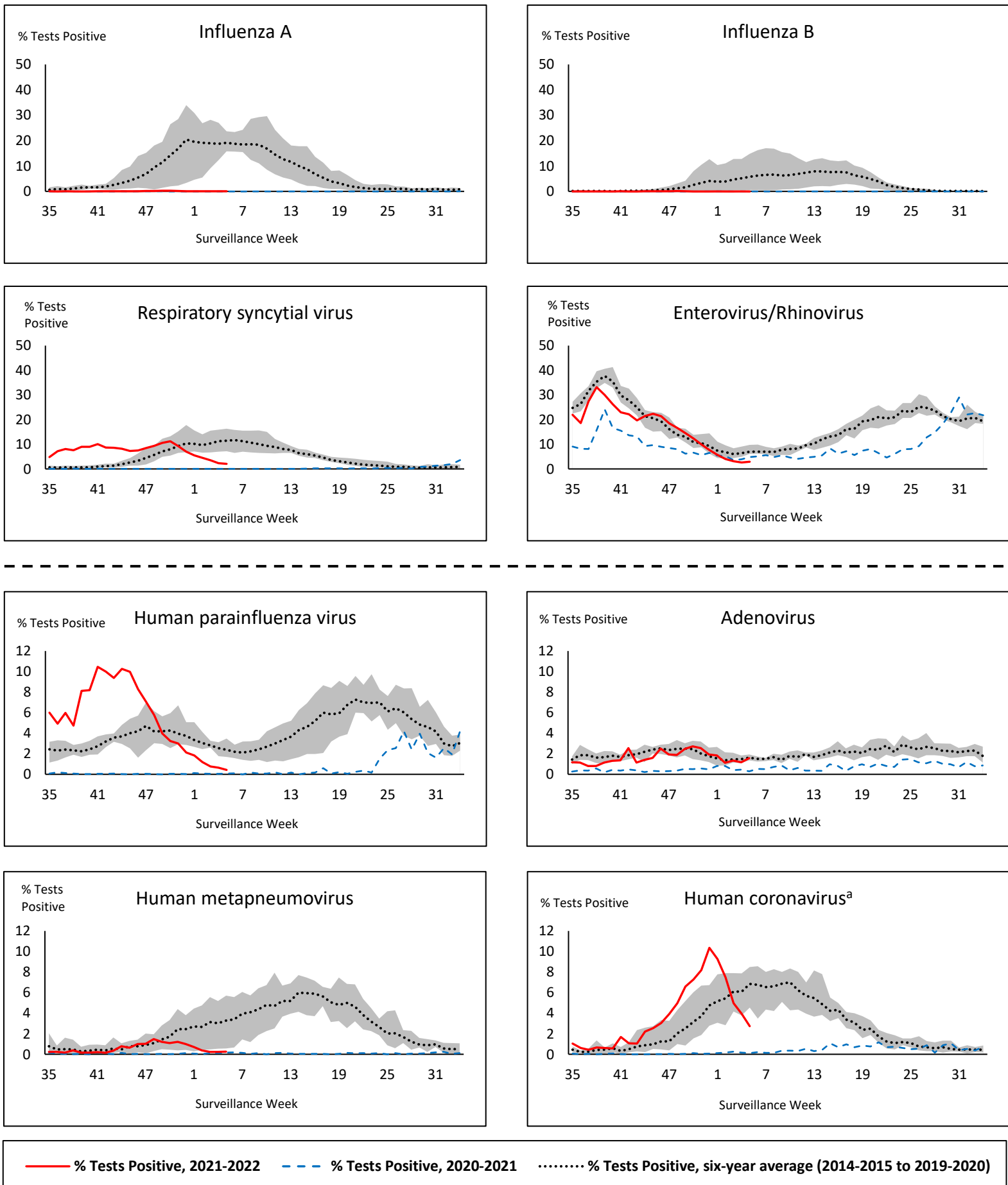
QC: Quebec

Terr: Territories of Canada

UHN: University Health Network



Figure 1: Positive respiratory virus tests (%) reported by participating laboratories in Canada by surveillance week compared to average and range from 2014-2015 to 2019-2020 season



Shaded area represents the maximum and minimum % of respiratory virus tests positive reported by week from seasons 2014-2015 to 2019-2020

Note: Data from week 11 of the 2019-2020 season onwards are excluded from the historical comparison due to the COVID-19 pandemic

Note: % Tests Positive scale changes across the dashed line

^a Human coronavirus excludes human coronaviruses SARS-CoV, MERS-CoV and SARS-CoV-2; Includes seasonal human coronaviruses HCoV-229E, HCoV-OC43, HCoV-NL63, HCoV-HKU1.

Table 1: Respiratory virus detections for the week ending February 5, 2022 (surveillance week 2022-05)

Reporting Laboratory	Flu Tested	A(H1)pdm09 Positive	A(H3) Positive	A(UnS) Positive	Total Flu A Positive	Total Flu B Positive	RSV Tested	RSV Positive	HPIV Tested	HPIV 1 Positive	HPIV 2 Positive	HPIV 3 Positive	HPIV 4 Positive	Other HPIV Positive	ADV Tested	ADV Positive	HMPV Tested	HMPV Positive	EV/RV Tested	EV/RV Positive	HCoV Tested	HCoV Positive
Newfoundland	125	0	0	0	0	0	125	0	125	0	0	0	0	0	125	2	125	4	125	2	N.C.	N.C.
Prince Edward Island	21	0	0	0	0	0	21	3	21	0	0	0	0	0	21	4	21	0	21	1	21	0
Nova Scotia	449	0	0	0	0	0	449	10	22	0	0	1	1	0	22	0	22	0	22	0	22	0
New Brunswick	463	0	0	0	0	0	264	0	25	0	0	0	0	0	25	1	25	0	25	0	25	1
Atlantic	1058	0	0	0	0	0	859	13	193	0	0	1	1	0	193	7	193	4	193	3	68	1
Région Nord-Est	319	0	0	0	0	0	145	2	0	0	0	0	0	0	0	0	64	1	N.C.	N.C.	64	2
Québec-Chaudière-Appalaches	7	0	0	0	0	0	7	0	0	0	0	0	0	0	0	0	0	0	N.C.	N.C.	0	0
Centre-du-Québec	98	0	0	0	0	0	96	0	11	0	0	0	0	0	11	2	11	0	N.C.	N.C.	11	1
Montréal-Laval	310	0	0	1	1	0	309	5	154	0	0	0	0	0	154	9	154	1	N.C.	N.C.	154	2
Ouest du Québec	68	0	0	0	0	0	68	0	4	0	0	0	0	0	4	0	4	0	N.C.	N.C.	4	0
Montérégie	42	0	0	0	0	0	42	0	0	0	0	0	0	0	0	0	0	0	N.C.	N.C.	0	0
Province of Québec	844	0	0	1	1	0	667	7	169	0	0	0	0	0	169	11	233	2	N.C.	N.C.	233	5
P.H.O.L. - Ottawa	28	0	0	0	0	0	28	1	28	0	0	0	0	0	28	0	28	0	28	0	28	4
EORLA	141	0	0	0	0	0	141	2	21	0	0	0	0	0	21	1	21	0	21	0	21	0
P.H.O.L. - Kingston	27	0	0	0	0	0	27	4	27	0	0	0	0	0	27	1	27	0	27	2	27	0
UHN / Mount Sinai Hospital	388	0	0	0	0	0	388	1	7	0	0	0	0	0	7	0	7	0	7	0	7	0
P.H.O.L. - Toronto	183	0	0	0	0	0	182	1	182	0	0	0	0	0	182	1	182	0	182	2	182	3
Sick Kids Hospital - Toronto	N.R.	N.R.	N.R.	N.R.	N.R.	N.R.	N.R.	N.R.	N.R.	N.R.	N.R.	N.R.	N.R.	N.R.	N.R.	N.R.	N.R.	N.R.	N.R.	N.R.	N.R.	N.R.
Sunnybrook & Women's College HSC	N.R.	N.R.	N.R.	N.R.	N.R.	N.R.	N.R.	N.R.	N.R.	N.R.	N.R.	N.R.	N.R.	N.R.	N.R.	N.R.	N.R.	N.R.	N.R.	N.R.	N.R.	N.R.
P.H.O.L. - Sault Ste. Marie	6	0	0	0	0	0	6	0	6	0	0	0	0	0	6	0	6	0	6	0	6	1
P.H.O.L. - Timmins	21	0	0	0	0	0	21	1	21	0	0	0	0	1	21	0	21	0	21	0	21	1
St. Joseph's - London	529	0	0	0	0	0	529	14	529	0	0	0	0	0	529	4	529	0	529	9	2	0
P.H.O.L. - London	109	0	0	0	0	0	109	4	109	0	0	0	0	0	109	3	109	0	109	2	109	2
P.H.O.L. - Orillia	21	0	0	0	0	0	21	1	21	0	0	0	0	0	21	1	21	1	21	2	21	0
P.H.O.L. - Thunder Bay	1	0	0	0	0	0	1	0	1	0	0	0	0	0	1	0	1	0	1	0	1	1
P.H.O.L. - Sudbury	6	0	0	0	0	0	6	0	6	0	0	0	0	0	6	0	6	0	6	1	6	1
P.H.O.L. - Hamilton	44	0	0	0	0	0	43	1	43	0	0	0	0	0	43	0	43	0	43	0	43	0
P.H.O.L. - Peterborough	7	0	0	0	0	0	7	0	7	0	0	0	0	0	7	0	7	0	7	0	7	3
St. Joseph's - Hamilton	616	0	0	0	0	1	616	5	616	0	0	1	0	0	616	12	616	1	616	11	0	0
Province of Ontario	2127	0	0	0	0	1	2125	35	1624	0	0	1	0	1	1624	23	1624	2	1624	29	481	16
Province of Manitoba	978	0	0	0	0	0	978	15	107	0	0	0	0	0	107	3	122	0	107	3	122	9
Province of Saskatchewan	965	0	0	3	3	0	964	28	126	0	0	0	2	0	126	0	126	0	126	6	126	5
Province of Alberta	1899	0	0	1	1	0	941	64	941	0	0	2	0	0	941	5	941	1	941	40	941	26
Prairies	3842	0	0	4	4	0	2883	107	1174	0	0	2	2	0	1174	8	1189	1	1174	49	1189	40
British Columbia	5984	0	0	0	0	0	5708	90	593	0	0	4	4	0	593	10	593	1	578	22	578	8
Yukon	63	0	0	0	0	0	63	0	N.C.	N.C.	N.C.	N.C.	N.C.	N.C.	N.C.	N.C.	N.C.	N.C.	N.C.	N.C.	N.C.	N.C.
Northwest Territories	N.R.	N.R.	N.R.	N.R.	N.R.	N.R.	N.R.	N.R.	N.R.	N.R.	N.R.	N.R.	N.R.	N.R.	N.R.	N.R.	N.R.	N.R.	N.R.	N.R.	N.R.	N.R.
Nunavut	N.R.	N.R.	N.R.	N.R.	N.R.	N.R.	N.R.	N.R.	N.R.	N.R.	N.R.	N.R.	N.R.	N.R.	N.R.	N.R.	N.R.	N.R.	N.R.	N.R.	N.R.	N.R.
Territories	69	0	0	0	0	0	67	2	4	0	0	0	0	0	4	0	4	0	4	0	4	0
CANADA	13924	0	0	5	5	1	12309	254	3757	0	0	8	7	1	3757	59	3836	10	3573	103	2553	70

The data in the RVDSS report represent surveillance data available at the time of writing. Data missing from the current week are denoted by N.R. Data not collected by reporting lab denoted by N.C.

The reporting laboratory previously listed as CHEO - Ottawa is now listed as EORLA to better reflect data submitted by this provider.

Specimens from Yukon (YT) are sent to reference laboratories in British Columbia and reported results reflect specimens identified as originating from YT.

Results from British Columbia comprise of specimens from the following sites: BC Children's and Women's Hospital, Children's and Women's Hospital Laboratory, Fraser Health Medical Microbiology Laboratory, Island Health, Providence Health Care, Powell River Hospital, St. Paul's Hospital, Vancouver General Hospital, Victoria General Hospital, BCCDC Public Health Laboratory, Interior Health Authority sites and Northern Health Authority sites.

Delays in the reporting of data may cause data to change retrospectively.

For British Columbia, only data from subtyped influenza A specimens are included in the weekly number of influenza detections. The sum of A(H1N1)pdm09, A(H3), and A(UnS) positive results may not equal the sum of total Flu A positive results.

Table 2: Cumulative respiratory virus detections from August 29, 2021 to February 5, 2022 (surveillance week 2021-35 to 2022-05)

Reporting Laboratory	Flu Tested	A(H1)pdm09 Positive	A(H3) Positive	A(UnS) Positive	Total Flu A Positive	Total Flu B Positive	RSV Tested	RSV Positive	HPIV Tested	HPIV 1 Positive	HPIV 2 Positive	HPIV 3 Positive	HPIV 4 Positive	Other HPIV Positive	ADV Tested	ADV Positive	HMPV Tested	HMPV Positive	EV/RV Tested	EV/RV Positive	HCoV Tested	HCoV Positive
Newfoundland	7241	0	0	0	0	0	7240	79	7243	1	3	116	0	154	7248	23	7237	29	7244	1728	N.C.	N.C.
Prince Edward Island	1675	0	0	0	0	0	1675	114	1630	0	0	152	0	0	1675	42	1675	4	1675	432	1675	100
Nova Scotia	11127	0	1	12	13	4	11126	290	1155	0	2	38	6	0	1169	10	1169	2	1169	93	1169	29
New Brunswick	9684	0	0	6	6	0	6058	254	2481	0	0	23	1	0	2474	7	2481	4	2481	35	2390	5
Atlantic	29727	0	1	18	19	4	26099	737	12509	1	5	329	7	154	12566	82	12562	39	12569	2288	5234	134
Région Nord-Est	13263	0	0	2	2	2	6438	1424	588	0	0	6	1	0	683	13	89	1	N.C.	N.C.	839	12
Québec-Chaudière-Appalaches	4260	0	0	5	5	4	4815	992	1187	0	3	7	5	0	1085	38	996	49	N.C.	N.C.	907	43
Centre-du-Québec	5064	0	0	3	3	4	5210	1079	433	0	0	19	0	0	433	19	441	15	N.C.	N.C.	426	9
Montréal-Laval	15279	0	0	32	32	4	15187	2428	4766	5	2	21	5	0	4765	287	4762	308	N.C.	N.C.	4762	56
Ouest du Québec	3872	0	1	7	8	0	3829	927	47	0	0	2	0	0	40	3	36	1	N.C.	N.C.	36	1
Montérégie	2394	0	0	2	2	0	2387	386	0	0	0	0	0	0	0	0	0	0	N.C.	N.C.	0	0
Province of Québec	44132	0	1	51	52	14	37866	7236	7021	5	5	55	11	0	7006	360	6324	374	N.C.	N.C.	6970	121
P.H.O.L. - Ottawa	6342	2	1	0	3	0	6342	1437	6342	0	0	0	0	727	6342	310	6341	38	6342	2205	6341	254
EORLA	4506	0	0	0	0	0	4481	592	581	0	2	19	0	0	581	11	262	3	581	111	239	15
P.H.O.L. - Kingston	1048	0	0	0	0	0	1047	112	1046	0	0	0	0	129	1046	18	1043	2	1046	276	1043	75
UHN / Mount Sinai Hospital	10987	0	0	8	8	2	10987	85	339	0	0	0	0	0	339	0	339	0	339	10	339	2
P.H.O.L. - Toronto	6257	0	13	0	13	0	6242	258	6242	0	0	0	0	261	6244	74	6241	11	6242	839	6242	198
Sick Kids Hospital - Toronto	839	0	0	0	0	0	0	0	839	0	2	68	1	0	839	12	839	1	839	233	839	10
Sunnybrook & Women's College HSC	0	0	0	0	0	0	0	0	0	0	0	0	0	0	0	0	0	0	0	0	0	0
P.H.O.L. - Sault Ste. Marie	210	0	1	0	1	0	208	4	208	0	0	0	0	7	208	3	208	1	208	47	208	7
P.H.O.L. - Timmins	272	0	0	0	0	0	272	12	272	0	0	0	0	17	272	1	272	0	272	29	272	14
St. Joseph's - London	8529	0	0	14	14	0	8532	723	6975	0	0	7	0	83	6975	90	6975	9	6929	382	487	2
P.H.O.L. - London	2641	0	6	0	6	0	2634	447	2634	0	0	0	0	152	2634	60	2634	8	2634	396	2634	199
P.H.O.L. - Orillia	641	0	1	0	1	0	641	100	641	0	0	0	0	41	641	22	639	6	641	160	639	46
P.H.O.L. - Thunder Bay	209	0	0	0	0	0	209	17	209	0	0	0	0	19	209	0	209	0	209	49	209	20
P.H.O.L. - Sudbury	237	0	0	0	0	0	237	10	237	0	0	0	0	8	237	1	237	2	237	29	237	5
P.H.O.L. - Hamilton	1227	0	7	0	7	0	1219	66	1219	0	0	0	0	43	1220	9	1219	6	1219	198	1219	72
P.H.O.L. - Peterborough	493	0	0	0	0	0	493	44	492	0	0	0	0	11	492	1	490	0	492	83	490	35
St. Joseph's - Hamilton	14297	0	4	7	11	1	14291	1575	14291	2	0	647	0	0	14291	154	14291	25	14291	1540	0	0
Province of Ontario	58735	2	33	29	64	3	57835	5482	42567	2	4	741	1	1498	42570	766	42239	112	42521	6587	21438	954
Manitoba	40628	1	15	8	24	0	40628	599	1221	1	4	68	0	0	1221	19	2267	6	1221	192	2073	46
Province of Saskatchewan	18308	2	7	13	22	0	18282	273	2673	0	1	188	26	0	2672	45	2672	2	2672	395	2670	171
Province of Alberta	49224	0	8	30	38	2	19301	2020	19301	0	18	649	130	0	19301	171	19301	41	19301	2647	19301	1148
Prairies	108160	3	30	51	84	2	78211	2892	23195	1	23	905	156	0	23194	235	24240	49	23194	3234	24044	1365
British Columbia	122341	3	36	3	164	83	120242	8061	14183	5	7	1039	146	139	14183	252	14179	60	13854	2521	13903	273
Yukon	4322	0	1	0	4	7	4429	244	N.C.	N.C.	N.C.	N.C.	N.C.	N.C.	N.C.	N.C.	N.C.	N.C.	N.C.	N.C.	N.C.	N.C.
Northwest Territories	543	0	0	0	0	0	504	4	60	0	0	1	0	0	60	2	60	0	503	89	60	0
Nunavut	10387	0	0	0	0	0	10376	7	N.C.	N.C.	N.C.	N.C.	N.C.	N.C.	N.C.	N.C.	N.C.	N.C.	N.C.	N.C.	N.C.	N.C.
Territories	15252	0	1	0	4	7	15309	255	76	0	0	1	0	0	76	3	76	0	519	97	73	0
CANADA	378347	8	102	152	387	113	335562	24663	99551	14	44	3070	321	1791	99595	1698	99620	634	92657	14727	71662	2847

The data in the RVDSS report represent surveillance data available at the time of writing. Data not collected by reporting lab denoted by N.C.

Note: Included in the cumulative detections this season are 11 co-infections of influenza A and B (total of 22 detections) that are suspected to be associated with recent live attenuated influenza vaccine (LAIV) receipt. Co-infections known or reported to be associated with recent LAIV are removed by the submitting laboratory or by PHAC beginning in week 44 as they do not represent community transmission of seasonal influenza viruses.

The reporting laboratory previously listed as CHEO - Ottawa is now listed as EORLA to better reflect data submitted by this provider.

Specimens from Yukon (YT) are sent to reference laboratories in British Columbia and reported results reflect specimens identified as originating from YT.

Results from British Columbia comprise of specimens from the following sites: BC Children's and Women's Hospital, Children's and Women's Hospital Laboratory, Fraser Health Medical Microbiology Laboratory, Island Health, Providence Health Care, Powell River Hospital, St. Paul's Hospital, Vancouver General Hospital, Victoria General Hospital, BCCDC Public Health Laboratory, Interior Health Authority sites and Northern Health Authority sites.

Delays in the reporting of data may cause data to change retrospectively. Due to these delays, the sum of weekly report totals do not add up to cumulative totals.

For British Columbia, only data from subtyped influenza A specimens are included in the weekly number of influenza detections. The sum of A(H1N1)pdm09, A(H3), and A(UnS) positive results may not equal the sum of total Flu A positive results.

Figure 2: Number of positive respiratory virus tests reported by participating laboratories in Canada by surveillance week

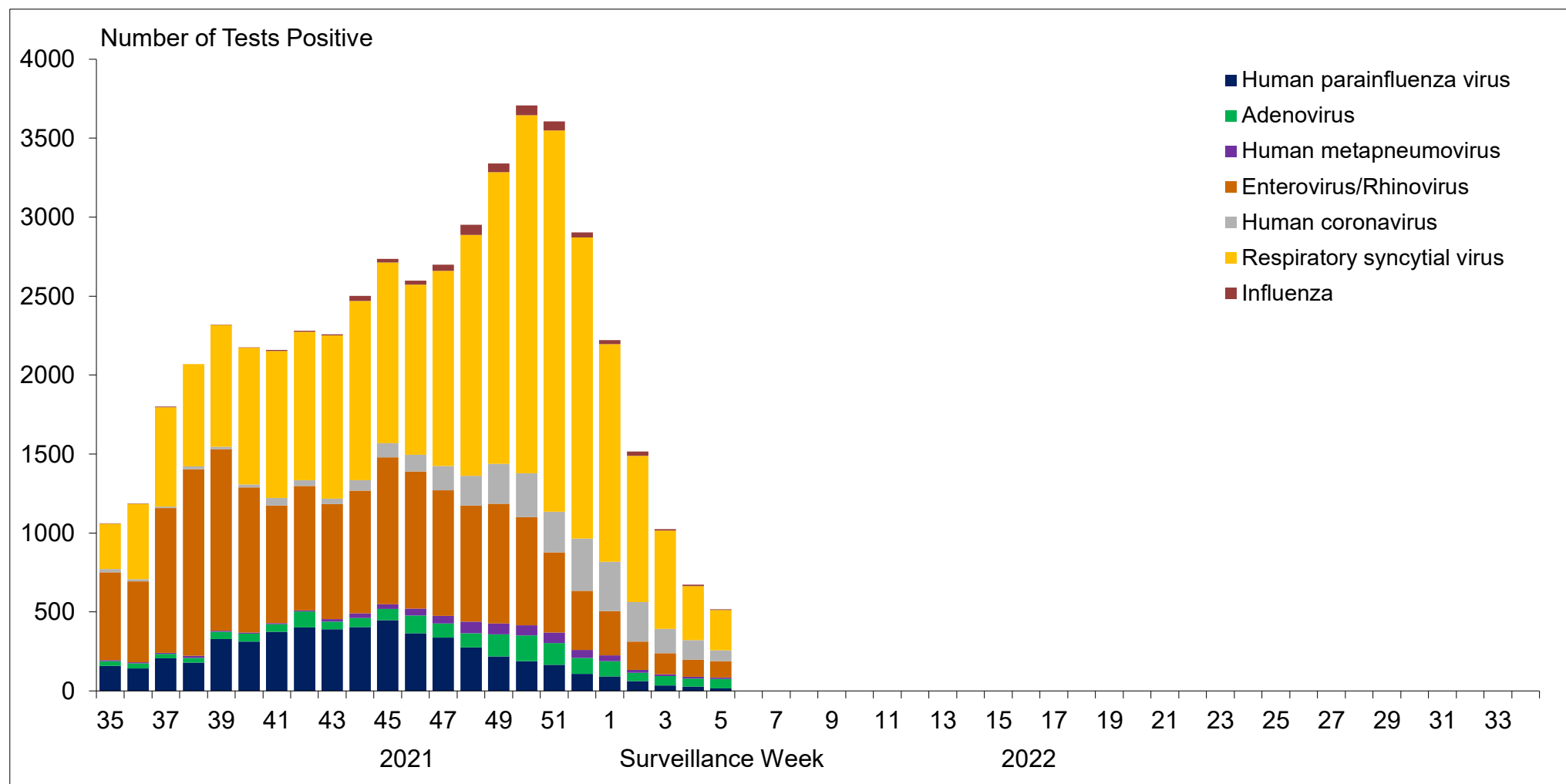


Figure 3: Positive Influenza (Flu) tests (%) in Canada by region by surveillance week

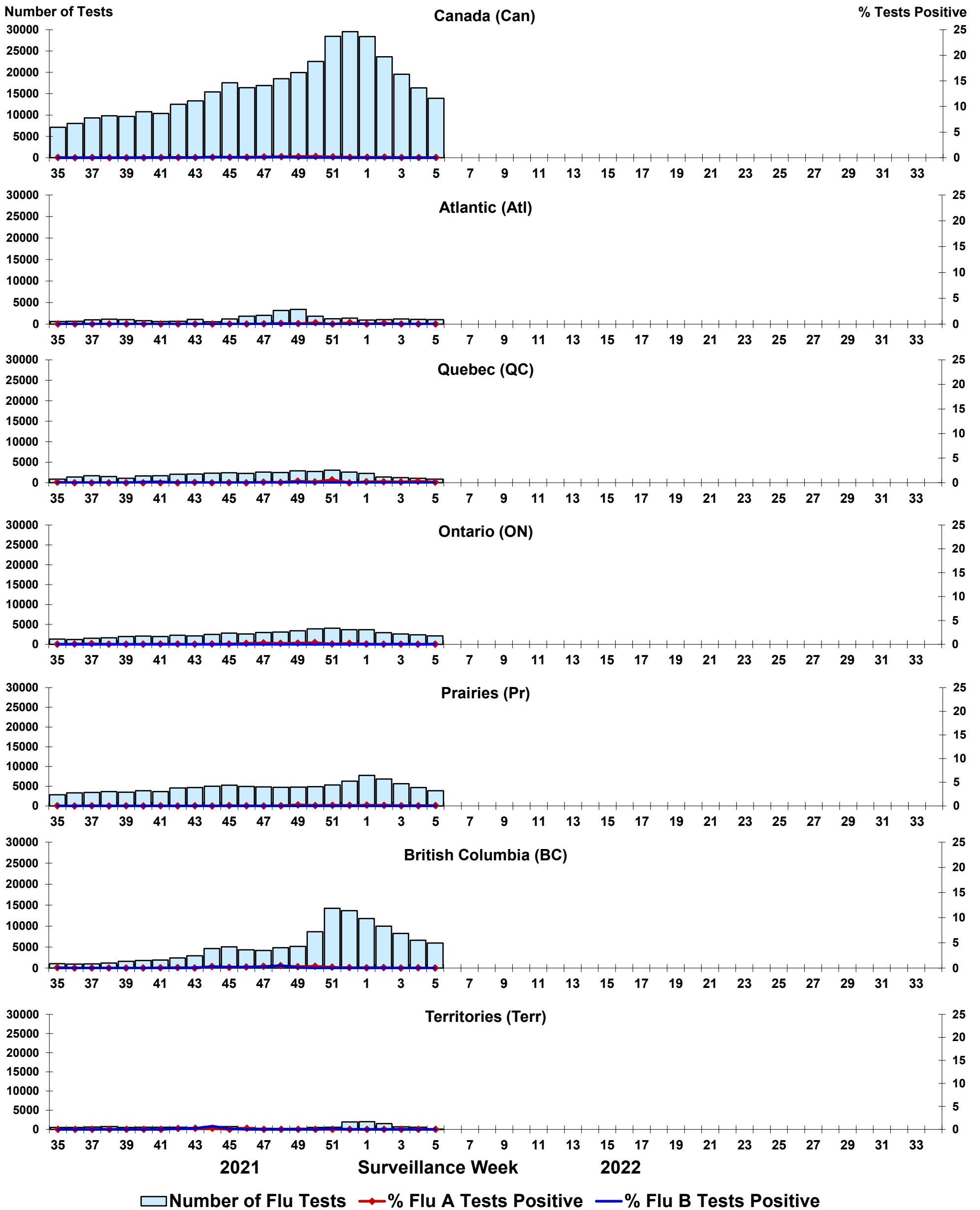


Figure 4: Positive Respiratory syncytial virus (RSV) tests (%) in Canada by region by surveillance week

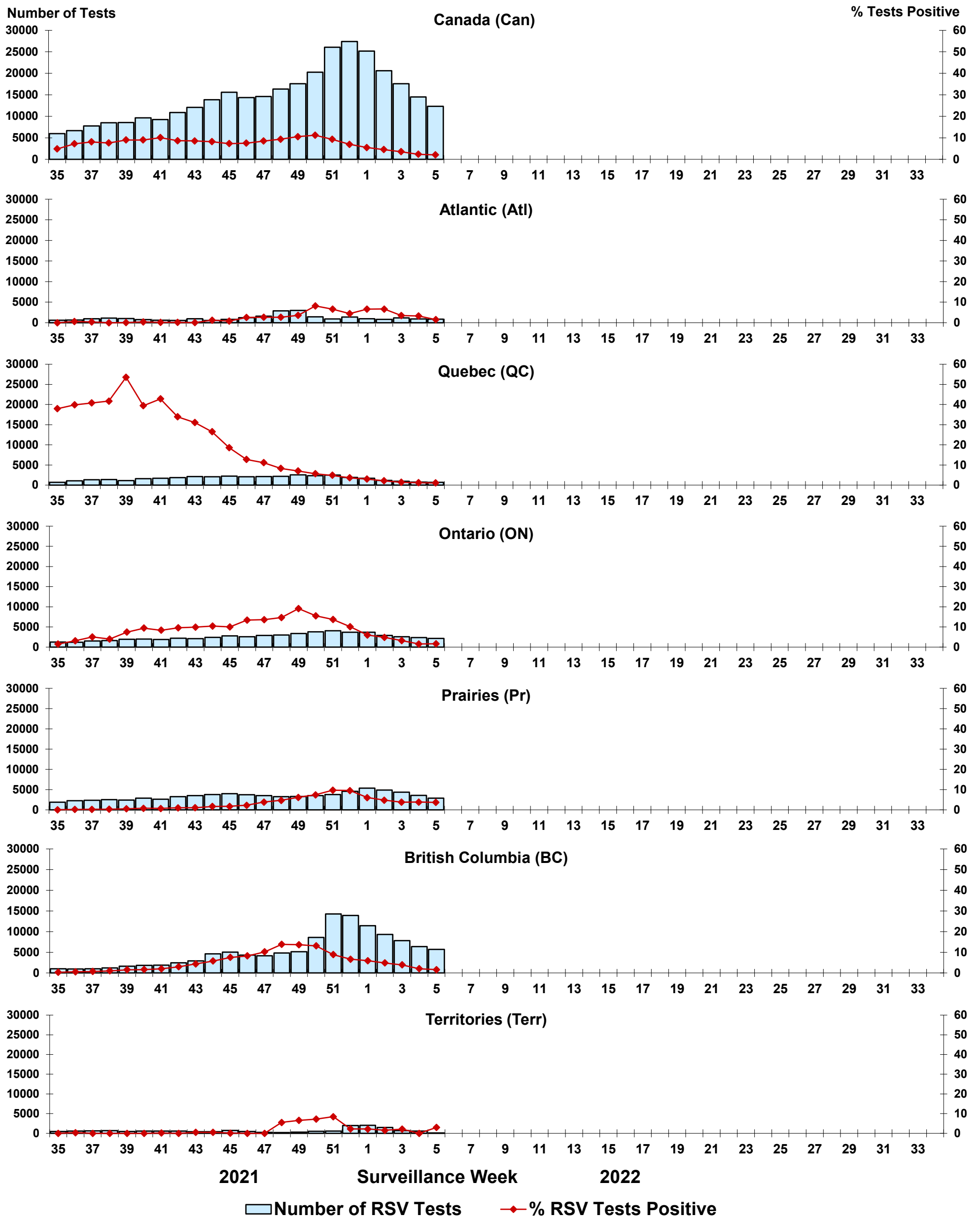


Figure 5: Positive Human parainfluenza virus (HPIV) tests (%) in Canada by region by surveillance week

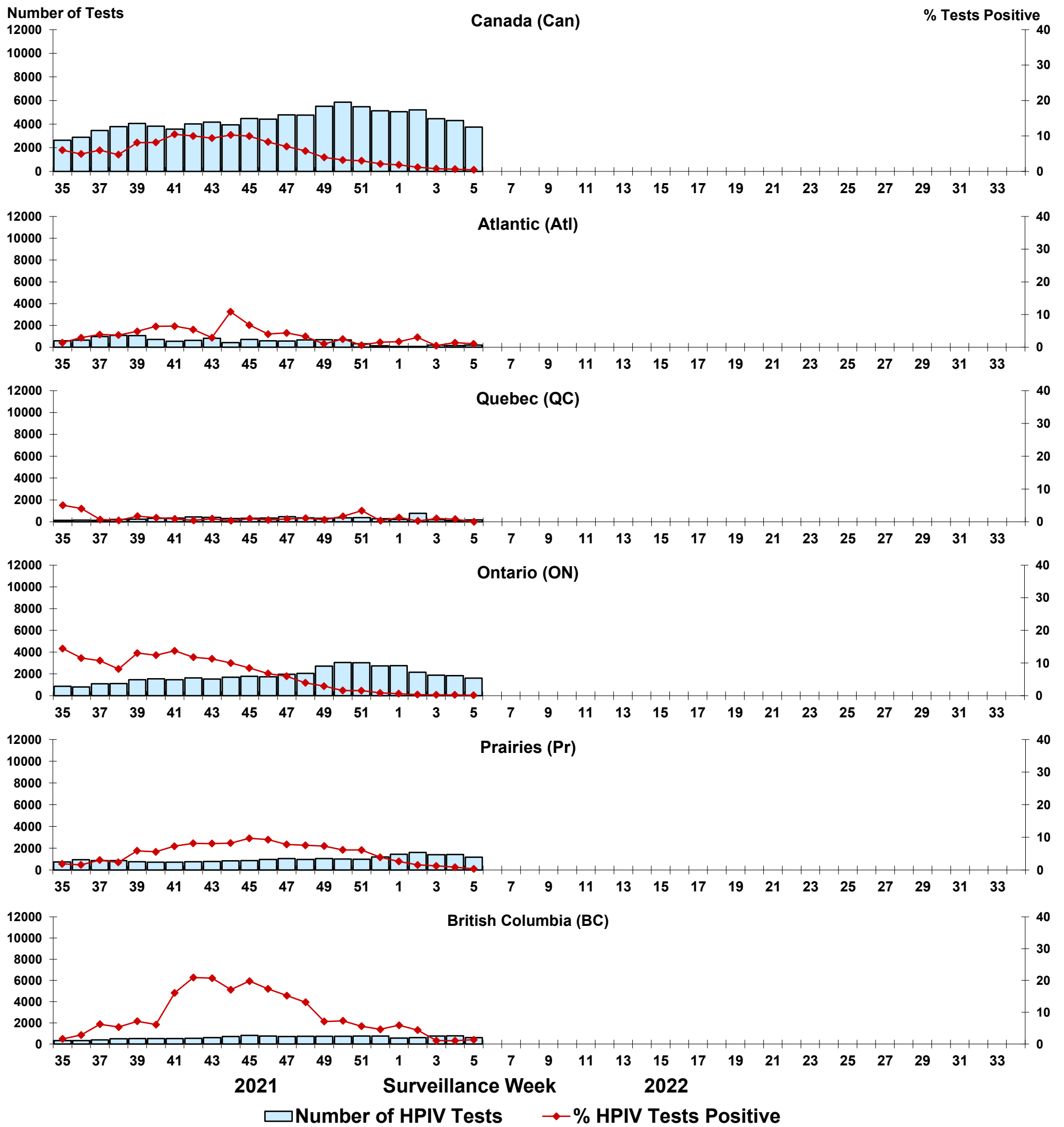


Figure 6: Positive Adenovirus (ADV) tests (%) in Canada by region by surveillance week

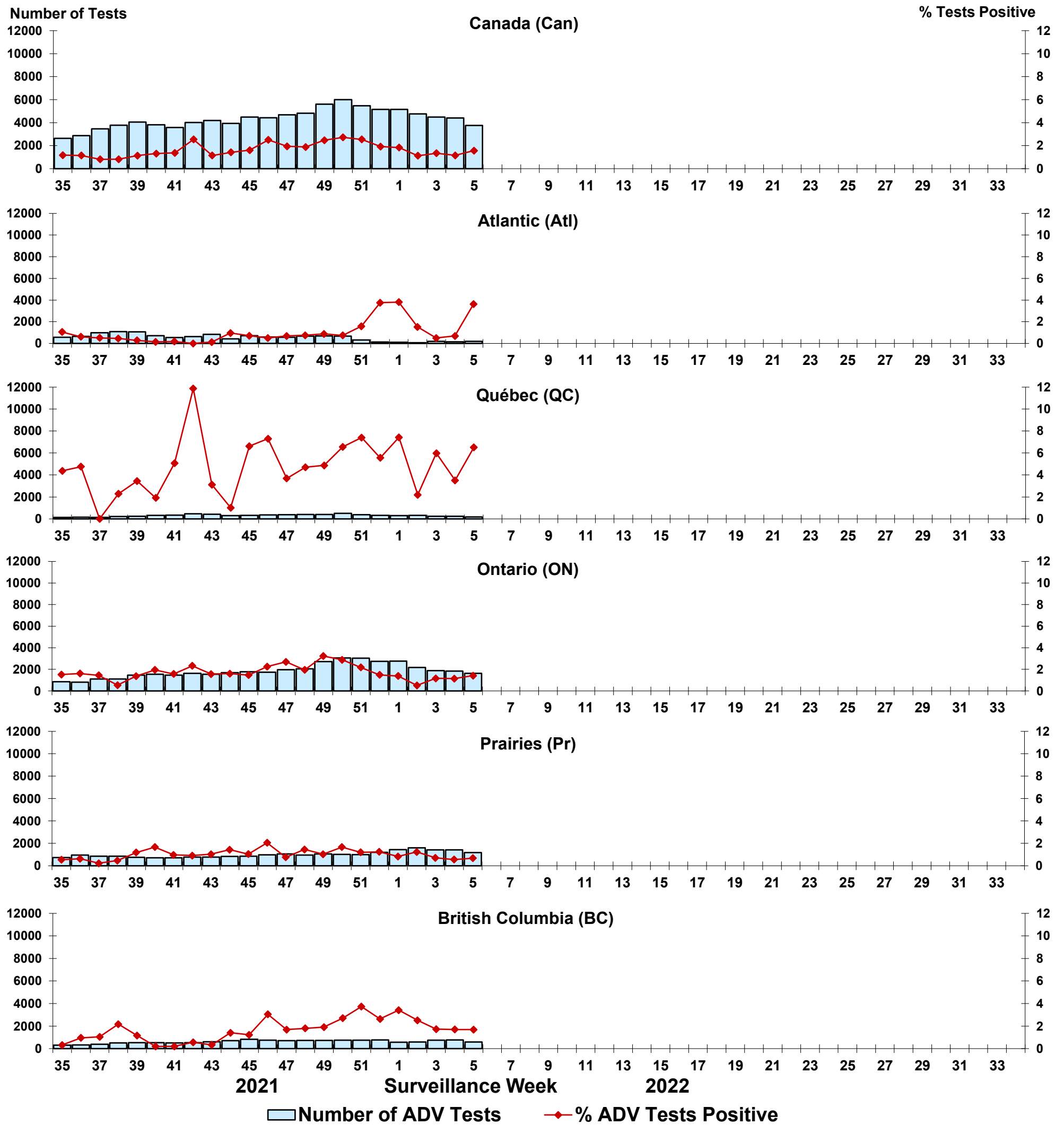


Figure 7: Positive Human metapneumovirus (HMPV) tests (%) in Canada by region by surveillance week

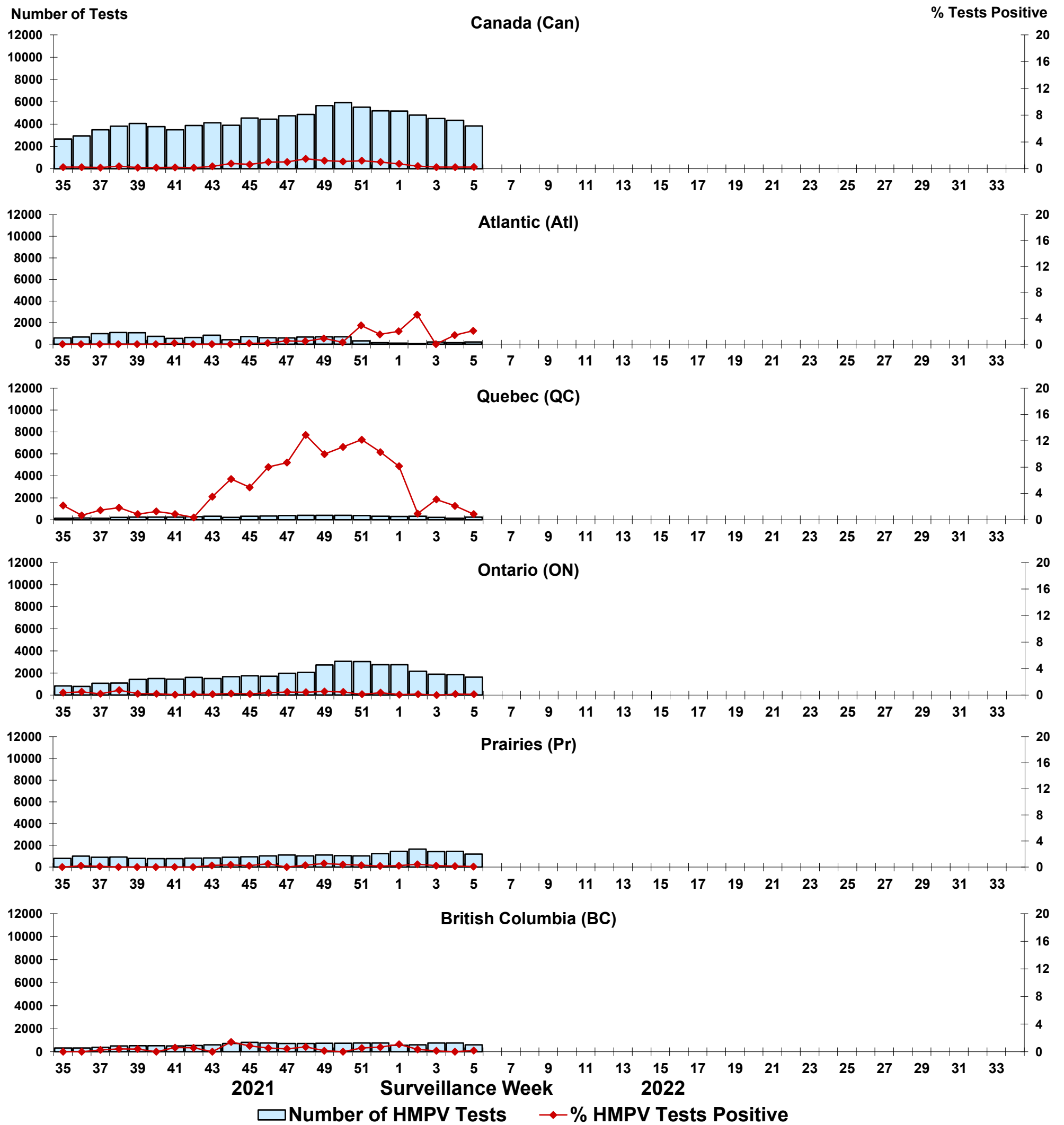


Figure 8: Positive Enterovirus/Rhinovirus (EV/RV) tests (%) in Canada by region by surveillance week

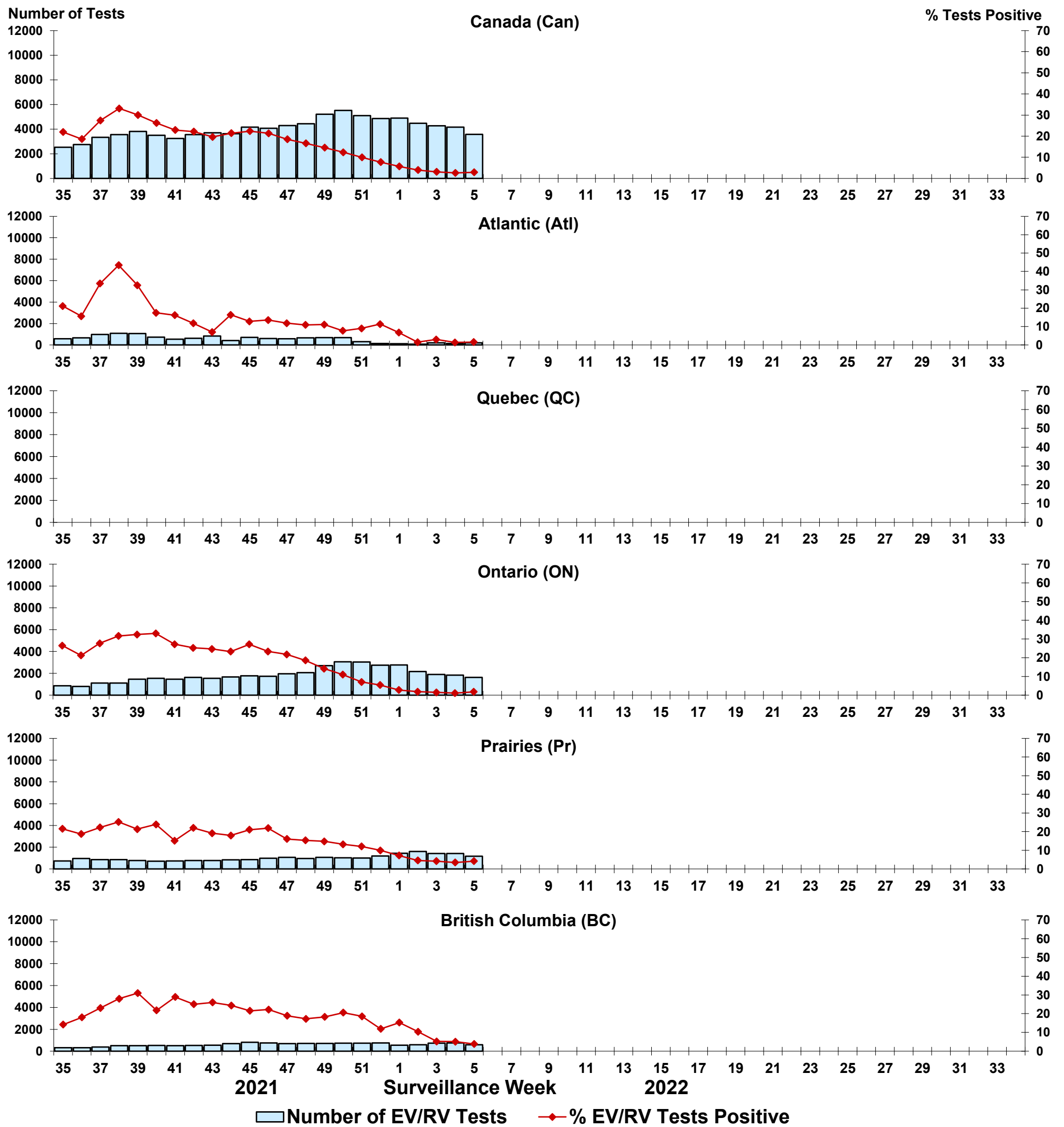


Figure 9: Positive Human coronavirus (HCoV) tests (%) in Canada by region by surveillance week

