

HD9044
.C2
A2
1957
c. 1 aa



CANADA

ANNUAL REPORT

OF THE

Canada. Board of Grain Commissioners for Canada

FOR THE YEAR

1957

DEPARTMENT OF TRADE AND COMMERCE

OTTAWA, CANADA

Minister:

Hon. Gordon Churchill, M.P.

Deputy Minister:

Mitchell W. Sharp

EDMOND CLOUTIER, C.M.G., O.A., D.S.P.

QUEEN'S PRINTER AND CONTROLLER OF STATIONERY

OTTAWA, 1958

Price, 50 cents.

(crest)

CANADA

ANNUAL REPORT

of the

BOARD OF GRAIN COMMISSIONERS

FOR CANADA

for the year

1957

DEPARTMENT OF TRADE AND COMMERCE

OTTAWA, CANADA

Minister:
Hon. Gordon Churchill, M.P.

Deputy Minister:
Mitchell W. Sharp

Edmond Cloutier, C.M.G., O.A., D.S.P.
Queen's Printer and Controller of Stationery
Ottawa, 1958.

Price, 50 cents.

1931

1932

1933

1934

1935

1936

237-731

121

1937

1938

1939

1940

1941

1942

1943

1944

TABLE OF CONTENTSManuscript
Page

Grain Supplies and Disposition, Crop Year 1956-57	6
Marketings	7
Country Elevator Shipments	7
Terminal Handlings	8
Exports	9
Domestic Usage	10
Reserve Carryover	10
Licensing and Bonding	11
Assistant Commissioners	11
Prosecutions	12
Shortages and Overages, Country Elevators	12
Regulations and Orders	13
Committees on Grain Standards	14
Inspection of Grain	14
Grain Research Laboratory	15
Weighing of Grain	17
Weighover of Stocks, Terminal and Eastern Elevators	17
Terminal and Eastern Complaints	18
Complaints on Export Shipments	18
Statistics	19
Information Program	19
Canadian Government Elevators	21
Lake Freight Rates	21
Prairie Farm Assistance Act	22
Organization and Personnel	22
Expenditure and Revenue	24

APPENDICES:

A. Committees on Grain Standards, 1957	25
B. Grain Appeal Tribunals	26
C. Licence and Bonding Branch	27
D. Registration Branch	33
E. Inspection Branch	37
F. Weighing Branch	56
G. Statistics Branch	61
H. Grain Research Laboratory	85
I. Canadian Government Elevators	94
J. Expenditure and Revenue	97
K. Regulations	103

LIST OF TABLESManuscript
PageAPPENDIX C - License and Bonding Branch

Table C-1	Number and Kind of Licenses Issued and Licensed Storage Capacity as at December 1st each year for the Past Five Years.....	30
C-2	Licensed Elevators and Storage as at December 1, 1957.....	31
C-3	Amounts Collected and Grain Purchased under the One Per Cent Levy, Prairie Farm Assistance Act, Crop Year 1956-57.....	32

APPENDIX D - Registration Branch

Table D-1	Warehouse Receipt Registrations for Primary and Transfer Receipts and Shipments at Public and Semi-Public Terminal Elevators and Eastern Elevators by Area and Grain, Crop Year 1956-57 and 10-year Average.....	35
-----------	--	----

APPENDIX E - Grain Inspection Branch

Table E-1	Primary Carlot Inspections, by Grains, Crop Year 1956-57, compared with 1955-56 and 10-year Average 1946-47 to 1955-56.	40
E-2	Primary Carlot Inspections, by Points, Crop Year 1956-57, compared with 1955-56 and 10-year Average 1946-47 to 1955-56.	40
E-3	Primary Carlot Inspections, Crop Year 1956-57, by Grain and Grades.....	41
E-4	Carlots of Tough, Damp and Straight Grain Inspected at Primary Inspection Points, Crop Year 1956-57.....	47
E-5	Number of Two-Pound Samples "Subject to Grade and Dockage" Inspected Crop Year 1956-57 compared with Crop Year 1955-56..	47
E-6	Carlots Re-inspected, Crop Year 1956-57.....	48
E-7	Summary of Carlot Inspections Appealed, Crop Year 1956-57.....	49
E-8	Vessel Shipments Inspected, Crop Year 1956-57.....	49
E-9	Carlot Shipments at Terminal Elevators Inspected, Crop Year 1956-57.....	50
E-10	Carlot Inspections Eastern Grain, Crop Year 1956-57, by Grains and Points.....	51
E-11	Carlot Inspections Eastern Grain, Crop Year 1956-57, by Grains, Grades and Points.....	51
E-12	Cargo Inspections, Eastern Grain, Crop Year 1956-57.....	54
E-12A	Cargo Inspections, Western Grain, Crop Year 1956-57.....	54

LIST OF TABLES - Continued

Manuscript
Page

APPENDIX E - Grain Inspection Branch (Cont'd)

Table E-13	Inspections - Eastern Grain in Bins or Warehouses, Crop Year 1956-57.....	54
E-14	Inward and Export Cargoes Sampled and Grade Checked, Crop Year 1956-57.....	55
E-15	Grain Sampled but not Inspected, Crop Year 1956-57.....	55

APPENDIX F - Grain Weighing Branch

Table F-1	Gross Quantities of All Grains Weighed at Terminal Elevators in the Western Division during 1956-57 Crop Year.....	58
F-2	Number of Cars Leaking and Cars with Missing Seals at the Lakehead, at Other Points and at Winnipeg Yards, by Railways, for the Crop Year 1956-57.....	59
F-3	Number of Cars Weighed at all Points and Percentage of such Cars found Leaking or with Defective Seals, Crop Years 1955-56 and 1956-57.....	59
F-4	Average Reported Outturn Shortages on Vessel Shipments of Grain from Fort William-Port Arthur to Canadian and United States ports during the 1956-57 Crop Year.....	60

APPENDIX G - Statistics Branch

Table G-1	Supply and Disposition of Canadian Grain, Crop Year 1956-57	64
G-2	Production and Producers' Marketings in Western Canada, by Provinces, Crop Year 1956-57.....	65
G-3	Receipts and Shipments of Canadian Grain at Terminal Elevators, Crop Year 1956-57.....	66
G-4	Shipments of Foreign Grain from Canadian Elevators into Canadian Consumer Channels, Crop Year 1956-57.....	67
G-5	Primary Receipts and Shipments at Eastern Elevators, Crop Year 1956-57.....	68
G-6	Supply and Disposition of Canadian Grain in United States Positions, Crop Year 1956-57.....	69
G-7	Exports of Canadian wheat, by Seaboard Sectors, by Months, Crop Year 1956-57.....	70
G-8	Overseas Exports of Canadian Grain, by Seaboard Sectors, by Grades, Crop Year 1956-57.....	71
G-9	Overseas Exports of Canadian Grain, by Ports, Crop Year 1956-57	73

APPENDIX G - Statistics Branch (Concluded)

Table G-10	Tough and Damp Grain Dried, by Storage Position, Crop Year 1956-57.....	74
G-11	Weighted Average Lake Freight Rates on Canadian Grain from Fort William-Port Arthur, Season of Navigation 1957.....	75
G-12	Overages and Shortages disclosed by Weighovers of Grain Stored in Public Terminal Elevators, Crop Year 1956-57.....	76
G-13	Excesses and Deficiencies in Specified Grades of Wheat Disclosed by Weighovers of Grain Stored in Public Terminal Elevators, Crop Year 1956-57.....	77
G-14	Excesses and Deficiencies in Specified Grades of Wheat Disclosed by Weighovers of Grain Stored in Semi-Public Terminal Elevators, Crop Year 1956-57.....	78
G-15	Excesses and Deficiencies in Specified Grades of Wheat Disclosed by Weighovers of Grain Stored in Private Terminal Elevators, Crop Year 1956-57.....	80
G-16	Overages and Shortages Disclosed by Weighovers of Canada Western and Foreign Grain Stored in Eastern Elevators, Crop Year 1956-57	81

APPENDIX J - Expenditure and Revenue

Table J-1	Expenditure, by Points, Branch and General Item, Fiscal Year ended March 31, 1957.....	97
J-2	Accrued Revenue, by Point and Branch, Fiscal Year ended March 31, 1957.....	99
J-3	Accrued Revenue and Net Expenditure, by Points and Branches, Fiscal Year ended March 31, 1957.....	101
J-4	Summary of Operations by Branches, Fiscal Year ended March 31, 1957.....	102

Winnipeg, Manitoba,
January 24, 1958.

The Honourable Gordon Churchill, M.P.,
Minister of Trade and Commerce,
Ottawa, Canada.

Sir,- We beg to submit herewith Report of the Board of Grain Commissioners for Canada for the year 1957 in compliance with Section 23 of the Canada Grain Act.

This report records information and statistics relating to grain handlings for the crop year August 1, 1956 to July 31, 1957, expenditures and revenues for the fiscal year April 1, 1956 to March 31, 1957, and summarizes the major activities of the Board for the 1957 calendar year.

GRAIN SUPPLIES AND DISPOSITION - CROP YEAR 1956-57

Heavier crops, reduced exports, increased domestic usage and a record closing carryover featured the 1956-57 grain crop season in Canada.

A total of 827.4 million bushels of the five principal grains were on hand August 1st, 1956, either in licensed storage, in farmers' bins or in transit between positions. To these supplies the substantial 1956 crops added an all Canada production total of 1409.7 million bushels made up of 573.1 millions of wheat, 524.4 millions of oats, 269.1 millions of barley, 6.6 millions of rye and a record 54.5 millions of flaxseed. This available supply total of 2237.1 million bushels of the five principal grains represented a 353.4 million bushel gain over the 1955-56 Crop Year level.

Export shipments, either as grain or in the form of wheat flour and milled oats, absorbed 385.4 million bushels of these supplies. Canadians, themselves, used a record quantity - 732.0 million bushels of the five grains, - for human consumption, commercial products, animal feed and seed during the crop season. Despite this heavy combined disappearance of 1117.4 millions the

values of grain held at the close of the crop season on July 31, 1957, amounted to 1119.7 millions - a record year end carryover.

Grain movement from farm to market maintained a moderate steady pattern during the 1956-57 crop season. Shipping during the fall months was heavier than over the opening period of 1955-56 but winter and spring handlings were light and in comparison did not rise to the peak levels recorded during the previous year. The overall volume, however, compared favourably and represented above average handlings in most sectors - an exception being the eastern seaboard traffic which declined noticeably during the year under review.

MARKETINGS

Primary grain deliveries from Canadian farms to the licensed elevator system totalled 588.7 million bushels of wheat, oats, barley, rye and flaxseed, combined. This inward volume represented a 20.0 million bushel increase over 1955-56 marketings and was the fourth heaviest delivery total on record. Receipts at western country elevators accounted for 578.6 million bushels of this total; prairie farmers marketed a further 6.5 million bushels at other interior elevators and mills, and shipped .3 million bushels over loading platforms. A slightly increased volume of eastern grown grain, chiefly wheat, moved into the licensed system during 1956-57 - 3.3 millions compared with only 1.4 millions in 1955-56.

COUNTRY ELEVATOR SHIPMENTS

Grain car loadings at country points over the Crop Year totalled 560.7 million bushels and exceeded the previous year's rail movement by 20.9 millions. Shipments of wheat - 359.4 millions, and of flaxseed - 26.9 millions, were heavier than during the previous year; barley movement was steady at 116.0

million bushels while rail traffic of oats (52.5 millions) and rye (5.9 millions) was down from 1955-56 levels. A slightly higher percentage of these cars moved westward - 24.2 % compared with 21.0% in 1955-56.

TERMINAL HANDLING

These heavier country elevator shipments were not paralleled by similar forwarding at the Lakehead. Fort William-Port Arthur grain unloads at 351.0 million bushels all grains were 17.3 millions above the previous year but declines in the vessel loadings of wheat, barley and rye cut the total outward movement to 329.6 million bushels compared with 348.0 millions in 1955-56. As a result Lakehead terminal stocks were held at a relatively high level throughout the season; an average storage of 64.1 million bushels of the five principal grains was recorded over the year and a peak stock of 81.6 million bushels was reached just prior to the opening of navigation.

This reduced Great Lakes traffic stemmed from a sharp decline in Eastern Seaboard exports and a consequent slowdown throughout the eastern system. Canadian Atlantic Seaboard ports, St. Lawrence and Maritime, reported a 47.8 million bushel drop in ocean shipping during the crop year. Movement during the fall months of 1956 was relatively strong but clearances from February to July, 1957, were only a fraction of the previous season's closing export traffic. Minor gains in shipments of flaxseed were offset by a drop of 49.1 million bushels in wheat clearances (191.5 millions) and total vessel loadings of the five principal grains combined through this ocean shipping sector amounted to only 145.2 million bushels compared with 193.0 millions handled by these eastern seaboard elevators in 1955-56.

The Port of Churchill, shipping during the stronger fall export period, increased its overseas wheat loadings in 1956-57 to 48 boats with a total cargo of 16.3 million bushels of wheat.

In contrast to the reduced eastern seaboard traffic, Pacific coast terminals established a new all-time record for ocean grain shipments during the 1956-57 season. The 139.0 million bushels of wheat, oats, barley and flaxseed loaded to ocean vessels were approximately 5.1 million bushels heavier than the former combined grains record established in 1953-54 and were more than 25.0 millions above the 1955-56 outward movement.

EXPORTS

Canada's 1956-57 grain and flour exports were made up of 228.3 million bushels of wheat, 34.5 millions of wheat flour (expressed in terms of wheat bushels), 18.3 millions of oats, .4 millions of milled oats (grain equivalent), 76.9 million bushels of barley, 5.4 millions of rye and a record of 21.6 million bushels of flaxseed. The combined grain and flour total of 385.4 million bushels, although down 16.7 millions from 1955-56 levels, was still 67.5 million bushels better than the long term, 30 year average of Canadian grain and flour exports (317.9 million bushels). As noted in the forwarding review, the shipping pattern was in definite contrast to the heavy closing trade recorded in 1955-56. Shipments during the first six months totalled 206.0 millions and were 51.4 millions above the exports for the opening half of 1955-56; from February 1st, 1957 to July 31st, clearances dropped to 179.4 millions compared with 247.5 million bushels moved during the last half of the preceding season. Principal reduction in the Canadian export trade was in clearances of wheat in grain form - down 40.9 millions from the previous year. This drop, coupled with more moderate declines in clearances of wheat flour and rye, reduced Canada's share of an expanding international bread grain trade to an estimated 22% compared with 26% of the 1955-56 world movement. Compensating in part for the lighter wheat and rye exports were expanded clearances of Canadian oats, barley and flaxseed. Oats exports including

rolled oats and oatmeal climbed to 18.7 million bushels from 4.1 millions in 1955-56; barley clearances advanced 12.6 millions to 76.9 millions. Exports of Canadian flaxseed at 21.6 million bushels represented an all-time record for clearances of this grain. These heavier coarse grain clearances increased Canada's percentage of the world coarse grain trade to an estimated 16% compared with approximately 14% in 1955-56.

DOMESTIC USAGE

Crop year balances indicate a Canadian domestic grain disappearance of approximately 732.0 million bushels during 1956-57. This includes grain used on farms for seed and feed as well as quantities absorbed by mills and processors for the production of flour for Canadian use, cereals, feed products, oils, industrial alcohol, malt and other commercial products derived from grain. This consumption represented a further increase in Canadian home grain usage which has been rising steadily over the past several years.

~~WHEAT~~ CARRYOVER

The ~~supply~~ supplies of 1119.7 million bushels of the five principal grains held by Canada in elevators, in transit and in farm bins at the close of the season represented a record July 31st carryover. These supplies were approximately 35 % above the 827.4 million bushels held in similar positions on July 31st, 1956, and some 141%^{above} the ten-year (1947-56) average of 464.0 millions. An increase of 34.4 million bushels in the volume of wheat in licensed storage was the only major change in the quantities held in visible elevator and transit positions with the big increases in year end stocks of wheat and oats occurring in farm held supplies which were at the highest levels on record. The breakdown of the July 31st, all-position carryover with last year's totals in brackets was estimated as follows:- wheat 729.2 (579.6), oats 226.1 (119.1), barley 142.7 (110.9), rye 14.1 (15.3) and flaxseed 7.6 (2.5) all millions of bushels.

LICENSING AND BONDING

The total licensed storage capacity at July 31, 1957, was 628,302,350 bushels including 15,142,090 bushels in special annexes. Licenses were in effect for 5,468 country, terminal, mill and eastern elevators; an increase of 13,623,450 bushels capacity and a decrease of seventeen licenses over the same date in 1956. Approximately one-half of the increase in storage capacity occurred at country elevators.

ASSISTANT COMMISSIONERS

Through its four Assistant Commissioners, the Board kept in close touch with the operation of licensed country elevators in the Western Division. During the year 1957, the Assistant Commissioners inspected 687 elevators in Manitoba, 1,043 in Northern Saskatchewan, 891 in Southern Saskatchewan, and 1,625 in Alberta, a total of 4,246. This inspection included checks on scales, sieves and certain other equipment; deductions for shrinkage and Prairie Farm Assistance Act Levy; and posting of current Board Regulations applying to country elevators.

Complaints originating from country points totalled 28, including 3 carried forward from 1956, as compared with 38 in the previous year.

Disposition of complaints investigated was as follows:

	Manitoba	Saskatchewan	Alberta	Total
No grounds for complaint.....	-	10	1	11
Settlement effected	1	7 *	-	8
Outside jurisdiction of Board ...	-	1	-	1
Penalty levied against licenses..	-	1	-	1
Licensee warned	1	-	-	1
Complaint withdrawn	-	5	-	5
Not yet disposed of	-	1	-	1
TOTALS	2	25	1	28

* Includes one formal investigation.

The Assistant Commissioners received and handled numerous inquiries on various matters related to country elevator operation. They also discussed accumulated overages with elevator agents concerned.

PROSECUTIONS

One penalty for a breach of Section 6 of Board Regulation No. 18 was levied and collected in the amount of \$200.00.

SHORTAGES AND OVERAGES, COUNTRY ELEVATORS

Due to continuation of the congested storage situation at licensed country elevators in the Prairie Provinces, only 1,452 out of a total of 5,360 elevators could be weighed over during the crop year 1956-57 by the companies operating them. The following table contains an analysis and comparison of the results disclosed by these audits:

Elevators Reporting	1956-57	1955-56
Shortages	481	627
Neither overages nor shortages	2	2
Overages of less than .25%	677	738
Overages of .25% to .50%	204	219
Overages over .50%	68	67
Total elevators weighed over	1,452	1,653

The Board considered that reported overages for some of the elevators were excessively high and summoned a total of ninety-four elevator agents to appear before it at hearings held at Winnipeg, Regina, Saskatoon, Calgary and Edmonton. At these sessions, members of the Board and Assistant Commissioners interviewed the agents and examined records concerning their operations in the presence of superintendents and other senior officials of the elevator companies concerned.

REGULATIONS AND ORDERS

Regulation No. 4 was repealed by the Board on October 28, 1957 and replaced by a new Regulation No. 4 which includes provisions applying to licensed eastern elevators in regard to cleaning of grain and bins.

Minor amendments were made to Regulations Nos. 5, 6 and 15 effective August 1, 1957, to include percentages applying to rapeseed.

Section 20 of Regulation No. 18 was amended effective August 1, 1957 by revising the table of dockage testing equipment and including therein additional items related to rapeseed and mustard seed.

Regulations Nos. 20, 21 and 22 were also amended effective August 1, 1957 by increasing certain maximum elevation charges for eastern, country and terminal elevators. The provision for fifteen days free storage between January 1 and March 31 at eastern elevators was removed from Regulation No. 20. In Regulation No. 21, the Allowance for Invisible Loss and Shrinkage on Flax delivered to country elevators was reduced by one-half of one per cent, to one per cent on straight grades and one and one-half per cent on tough and damp grades. In Section 10 of Regulation No. 20, weights per bushel to be used in assessment of eastern elevator charges were established for rapeseed, mustard seed, peas, soybeans and sunflower seed.

By Order No. 1 - 1957-58, dated October 16, 1957, the Board altered, effective October 21, 1957, the provisions of a portion of Regulation No. 5 to effect a change in the procedure for grading of Western Barley containing stones, gravel or like material.

By Order No. 2 - 1957-58, dated October 18, 1957, the Board renewed until further notice its suspension of a provision of Regulation No. 23 relating to storage of grain at licensed country elevators.

COMMITTEES ON GRAIN STANDARDS

The Board constituted Committees on Western and Eastern Grain Standards for the Crop Year 1957-58 in accordance with the provisions of Section 25 of the Canada Grain Act. Personnel of these Committees is given in Appendix A.

A special meeting of the Western Committee took place at Winnipeg on January 15, 1957. The Committee decided to eliminate the commercial grade known as Extra No. 2 Feed Barley, effective August 1, 1957, and also named and defined new commercial grades of Rapesed.

Regular meetings of this Committee were convened on October 17, 1957 and November 15, 1957, to receive reports concerning the quality of the current season's crops and to select and settle standard samples and standard export samples for various grades of Western grain.

The Eastern Committee met in Toronto on August 23, 1957 and November 21, 1957, to establish standard samples for statutory grades of Eastern grown grain.

In both divisions, continued use of previous standard samples was authorized in certain cases where suitable samples for established grades were not available.

INSPECTION OF GRAIN

The 1957 crop of Red Spring Wheat in the three prairie provinces, particularly in the southern regions, suffered from severe drought reducing the yield of bushels per acre. This wheat graded no higher than No. 3 Manitoba Northern.

In the central and northern areas all cereal grains were somewhat better, higher in weight per bushel and yield. Unfortunately considerable rain occurred during the third week in August, resulting in lower grades on account of mildew that took place after the grain had been swathed. Barley and oats also were degraded on this account.

A larger acreage of Rapeseed was seeded, but owing to drought the yield was sharply reduced, however, grades were maintained as Canada Rapeseed, and No. 2 Canada Rapeseed.

Flaxseed on the whole is far below an average crop owing to the disease "Aster Yellow" that reduced the yield with lower weight per bushel.

The Tame Mustard Seed acreage in southern Alberta, mostly of the oriental variety, was sharply reduced with the yield per acre reported lower than in 1956, but top grades were maintained.

Safflower Seed was grown in volume for the first year in southern Alberta with the result the Western Grain Standards Committee has established commercial grades for this seed effective August 1st, 1958.

RESEARCH

Information on the quality of 1957 crops of spring wheat, durum wheat, barley and oil seeds was published early in the fall in two protein maps and four crop bulletins, and was also presented at two meetings of the Committee on Western Grain Standards. A new quarterly bulletin on the quality of durum wheat cargoes exported from Canada was started as a companion to the corresponding bulletin on bread wheats. Steady demand for these bulletins shows that they are useful to overseas customers for Canadian wheats. Studies of the qualities of grain at various stages of marketing were also continued throughout the year.

The Laboratory has worked in close cooperation with the Inspection Branch to provide information and services required in settling grading problems. Studies were made of the quality of standard and standard export samples and of samples of current crops on which laboratory tests were requested. Moisture testing and equipment in the Board's inspection offices was supervised regularly, and C.A.H. electrical moisture meters were installed in ten of the offices. Requests for services to the Canadian Wheat Board, the Grain Division of the Department of Trade and Commerce, Commercial

Counsellors and Trade Commissioners in importing countries, and other government agencies continued to increase. As in previous years the Laboratory took a major part in studies, sponsored by the Associate Committee on Grain Research, of the quality of varieties developed by Canadian plant breeders. An active program of applied and basic research was maintained throughout the year.

The first award of the National Research Council Postdoctorate Fellowship, tenable in the Board's Laboratory, was made to Professor Hiroshi Matsumoto of Osaka Women's University, Japan; he arrived last August and will spend a year working in the Basic Wheat Research Section. Dr. Walter Bushuk was awarded a National Research Council Overseas Fellowship and one of the two Rutherford Memorial Fellowships offered each year by the Royal Society of Canada; he was granted leave of absence for one year at the Centre des Recherches sur les Macromolécules at Strasbourg, France. During the year, three members of the staff went abroad to study problems relating to the utilization of Canadian grain in various markets. Dr. Irvine was a member of a mission to Japan in the spring, and returned through Europe. Dr. Meredith attended the European Brewery Congress and made other visits relating to barley utilization. In the fall, Dr. Anderson visited Scandinavia and the principal European markets for wheat.

Steady progress has been made in the expansion of the Laboratory mentioned in last year's report. Additional space has been obtained on the ground floor for enlargement of the milling and baking section and for consolidation of all routine studies in one area. By the end of the year, the new sample room and laboratory for routine analysis were occupied, and remaining changes will be completed within a few months.

WEIGHING OF GRAIN

The Weighing Branch of the Board, in addition to providing the usual weighing services, investigated complaints received by the Board on vessel and car out-turn shortages in an effort to determine the cause and where possible assign the liability. Scales at licensed terminal and eastern elevators were inspected periodically by the Board's scale inspector. Additional scale inspections were made at any of these elevators where the Board felt that reported out-turns were particularly unsatisfactory. During the latter part of the year, the Weighing Branch made a special examination and survey at all terminal elevators and at mill elevators receiving weighing services to determine the condition and general efficiency of equipment used in the receiving, weighing and shipping of grain. Details of the work of this Branch are given in Appendix F.

WEIGHOVERS OF STOCKS, TERMINAL AND EASTERN ELEVATORS

In accordance with the provisions of sections 139 and 140 of the Canada Grain Act, members of the Board's Weighing and Inspection staffs weighed over 30 terminal and 21 eastern elevators during the 1956-57 crop year.

Deferments into the 1957-58 crop year were made at 11 terminal elevators at the Lakehead, 5 terminal elevators at other points and at 9 eastern elevators. It was found necessary to grant these deferments to avoid temporarily halting the operations of elevators concerned with the movement of grain for export commitments. However, it was possible to carry out ten of these deferred weighovers before the end of December, 1957.

Tables G-12 to G-16 of Appendix G contain the results of 51 weighovers carried out in the 1956-57 crop year.

TERMINAL AND EASTERN COMPLAINTS

During 1957, the Board directed the investigation of 43 complaints regarding the handling of grain at terminal elevators and shipments to Eastern Canada. All but 3 of these complaints related to reports of outturn shortages including 21 on vessel shipments from Fort William and Port Arthur to Eastern Canada and the U.S.A., 17 on vessel shipments between licensed eastern elevators and 2 on carlot shipments unloaded at Fort William and Port Arthur.

These complaints were disposed of as follows:

	Weight	Miscellaneous
No cause of reported discrepancy found	37	-
No grounds for complaint	1	2
Settlement effected	1	-
Complaint withdrawn	-	1
Not yet disposed of	1	-
TOTALS	40	3

COMPLAINTS ON EXPORT SHIPMENTS

The Board and its officials handled a total of 55 complaints relating to overseas shipments. Of these, 37 complaints concerned outturn weights at overseas destinations and the remaining 18 concerned the quality of grain cargoes.

Disposition of these complaints was as follows:

	Quality	Weight
No cause of reported discrepancy found	-	27
No grounds for complaint	18	-
Settlement effected	-	4
Not yet disposed of	-	6
TOTALS	18	37

STATISTICS

Statistics relating to Canadian grain movement collected and compiled by the Board's Statistics Branch are presented in Appendix G of this Report.

INFORMATION PROGRAM

Early in 1957, the Board of Grain Commissioners purchased a mobile unit consisting of a one-ton truck (tractor) and a 23 foot semi-trailer and prepared a display and installed it in the trailer.

The main feature of the Exhibit is a display of 22 of the main grades of grain in open containers so that farmers can handle and compare the different grades. Samples of fifty additional grades in plastic containers are carried in a cabinet to enable the Inspector in charge to illustrate almost any grade that the visitor might be interested in.

Coloured photographs illustrate the various phases of the Board's operations and a separate panel of coloured photographs illustrates the types of wheat kernel damage, i.e., frost, immaturity, heat, insect, etc. These, together with pictures of loaves of bread baked from wheat containing the different types of damaged grain, are attached to the walls of the trailer. Murals painted on the outside of the trailer illustrate harvesting operations and pictures of country and terminal elevators.

A map showing the location and capacity of licensed country elevators forms a backdrop for a display of milling fractions and a display of equipment used in grading grain. Posters outlining the organization of the Board and the rights and privileges of the farmer are tacked to the walls.

A portable motor generator supplies electric power for a battery of fluorescent lights, so that the exhibit is not dependent upon an outside supply of power.

A large educational Exhibit prepared by the Exhibition Branch of the

Department of Trade and Commerce in 1953, has been shown at nearly all Class "A" and "B" Exhibitions in Western Canada. It has therefore nearly fulfilled its purpose and was used on only three occasions during the year.

This exhibit outlines the organization of the Board of Grain Commissioners with special reference to the provisions of the Canada Grain Act, which affect the farmer. Coloured transparencies illustrate the work of Inspection, Weighing and Research Branches. Average samples of the various grades are also displayed.

An Assistant Commissioner and one or more Grain Inspectors were in charge of the exhibits to answer farmer's questions about the work of the Board or specific questions on grading. Both displays were well patronized and many questions on grain grading and handling were answered to the satisfaction of the farmers and visitors.

The motion picture, "Grain Handling in Canada" was shown at a number of meetings and short courses and to several groups of visitors from foreign countries, during the year. This film is in colour and outlines the work of the Board of Grain Commissioners in supervising the handling of grain from the time it leaves the farmer's hands at the country elevator until it is aboard ship for export. It was taken by the National Film Board and is available through their libraries.

Visitors to the Board Office included a group of Cereal Chemists from The Netherlands, Belgium and Switzerland; a Harley Mission from the United Kingdom; eight Agricultural Experts from Russia; a Milling Mission from Germany; an Agricultural Delegation from Romania; groups of Agriculturalists from Turkey, Pakistan, Burma and Austria.

Other visitors included Trade Commissioners from the United Kingdom, Australia, Germany, Japan, Belgian Congo, Belgium, India, Portugal and Colombia.

After meeting with members of the Board, the visitors were shown through the various Branches by departmental officials who outlined and demonstrated the work of the Board.

Members of the Board and senior officials addressed the annual meetings of producer organizations and meetings of other organizations interested in agriculture in various parts of Canada.

CANADIAN GOVERNMENT ELEVATORS

During the crop year 1956-57, receipts of grain at the Canadian Government Terminal Elevators operated by the Board at Moose Jaw, Saskatoon, Calgary, Edmonton, Lethbridge and Prince Rupert were 17.0 million bushels and shipments 16.7 million bushels as compared with 12.4 million and 14.3 million bushels respectively, in the previous crop year.

In the fiscal year 1956-57, revenues exceeded expenditures by \$659,137.

LAKE FREIGHT RATES

The maximum rates authorized by the Board's Order No. 20 of September 28, 1954, as follows, remained in effect throughout the 1957 season of navigation:

	Wheat and Rye	Barley	Oats
	- cents -		
(a) From: Fort William or Port Arthur, Ontario, To: Georgian Bay Ports, Gederich, Sarnia and Walkerville	5 1/2	5 1/4	5
Port Colborne	7 1/2	7 1/4	6 3/4
Toronto	8	7 1/2	7 1/4
Kingston	8 3/4	8 1/4	8
Prescott	9	8 1/2	8 1/4
Montreal, Sorel, Three Rivers and Quebec City, Direct or Transferred at Intermediate Ports	16	15 1/4	14

(b) For grain loaded during the month of December in any year these maximum rates are increased two cents (2c) per bushel to compensate for increased insurance rates.

The average rates charged during the season are given in Table 11 of Appendix G.

PRAIRIE FARM ASSISTANCE ACT

Under the provisions of Section 11 of the Prairie Farm Assistance Act, the Board continued to collect the one per centum levy on grain purchased by licensees under the Canada Grain Act. During the crop year 1956-57, the amount collected was \$6,205,862.54. Collections by the Board since the inception of the Prairie Farm Assistance Act to July 31, 1957 total \$101,196,715.41.

ORGANIZATION AND PERSONNEL

Chief Commissioner R. W. Hillier visited Great Britain and the Continent during the month of May, 1957, in connection with various matters relating to the Board's work.

The Director of Administrative Services, John Rayner, returned to duty after one year's leave of absence during which he served in Turkey with the Food and Agriculture Organization of the United Nations.

Dr. J. A. Anderson, Chief Chemist, was presented with the Thomas Burr Osborne Medal by the American Association of Cereal Chemists.

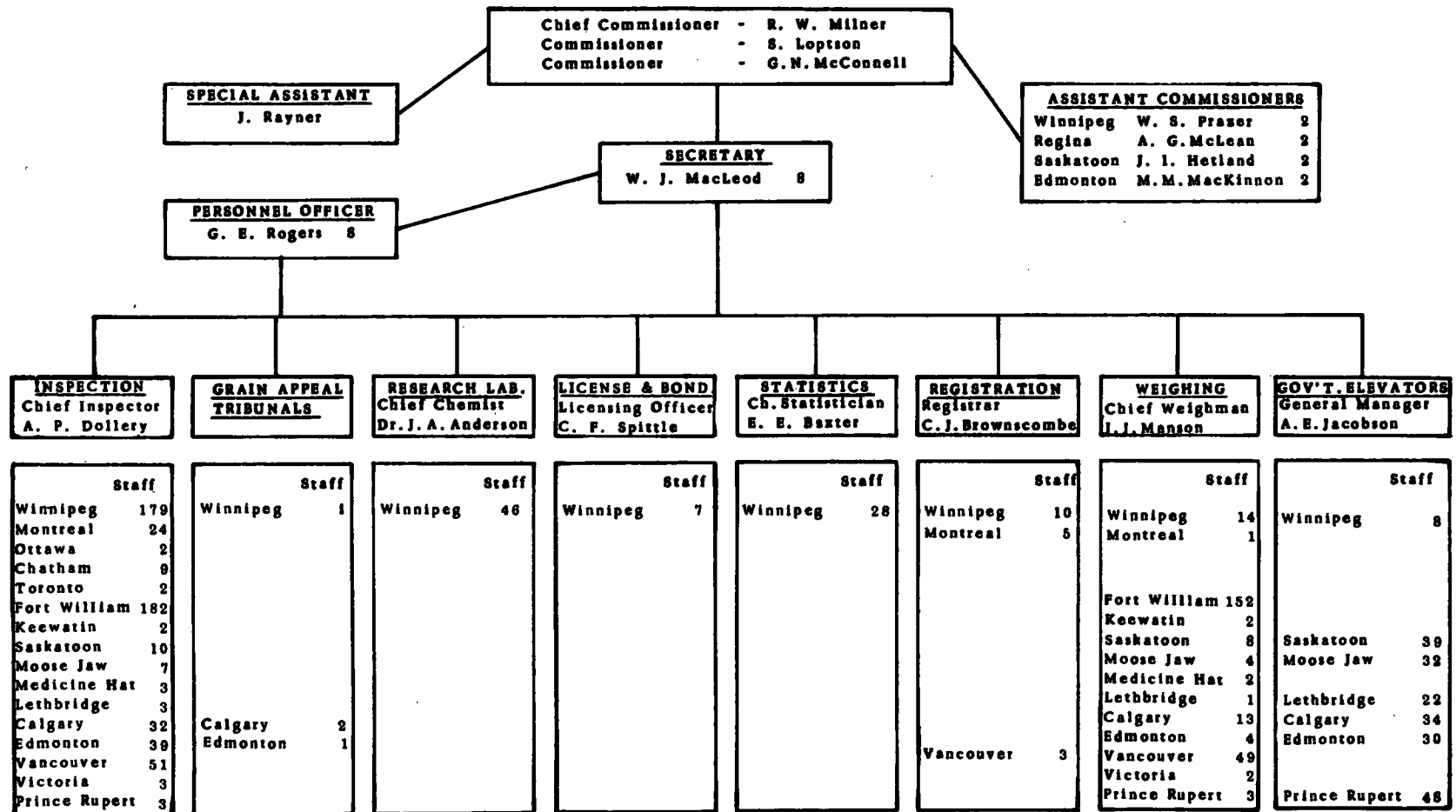
Dr. H. E. Gray of the Department of Agriculture was transferred to the staff of the Board to assume full time duties in the control of insect infestation in grain elevators.

F. J. Marples, Chairman of the Grain Appeal Tribunal at Calgary, retired on account of age after 48 years service and he was succeeded by R. E. Forrester, Chairman of the Grain Appeal Tribunal, Edmonton. A. M. Creighton, Grain Inspector in Charge at Edmonton was appointed as Chairman of the Grain Appeal Tribunal at Edmonton. J. H. McLean, Grain Inspector in Charge at Moose Jaw assumed the duties vacated by Mr. Creighton. H. A. Munro succeeded Mr. McLean at Moose Jaw.

At December 31, 1957, the Board's staff totalled 935, an increase of 7 over 1956. The staff of the Canadian Government Elevators numbered 211 including 33 casuals. This is a decrease of 11 during the year.

A chart of the Board's organization will be found immediately following.

BOARD OF GRAIN COMMISSIONERS FOR CANADA



EXPENDITURE AND REVENUE

Total expenditure and accrued revenue of the Board, exclusive of the Canadian Government Elevators, for the fiscal year 1956-57 compared with 1955-56 was as follows:

	1956-57	1955-56
Expenditure	\$4,084,163.00	\$3,816,657.78
Revenue	3,098,945.00	2,338,380.66

Expenditure for the nine months of the 1957-58 fiscal year to December 31, 1957 totalled \$2,930,732 as against \$3,070,293 for the comparable period during 1956-57. Cash revenue for the same nine-month period amounted to \$1,946,092 as compared with \$2,274,201 in the previous year.

Attached hereto is a series of Appendices which outline in greater detail the work of the Board's Branches.

Respectfully submitted,

R. W. Milner

Chief Commissioner

L. J. Lupton

Commissioner

Geo. H. McConnell

Commissioner

W. Max Lead

Secretary

APPENDIX A

Committee on Western Grain Standards, as at
December 31, 1957

- R. W. Milner, Chief Commissioner, Board of Grain Commissioners
- S. Loptson, Commissioner, Board of Grain Commissioners
- G. W. McConnell, Commissioner, Board of Grain Commissioners
- A. F. Dollery, Chief Grain Inspector, Board of Grain Commissioners
- Dr. J. A. Anderson, Chief Chemist, Grain Research Laboratory
- D. L. Ross, Chairman, Grain Appeal Tribunal, Winnipeg
- E. E. Forrester, Chairman, Grain Appeal Tribunal, Calgary
- A. M. Creighton, Chairman, Grain Appeal Tribunal, Edmonton
- Dr. D. G. Hamilton, Dominion Cerealists

L. A. McCorquodale, representing the millers of wheat flour

- George Bennett
 - W. H. Fairfield
 - Uri Powell
 - B. S. Plumer
- (Representing grain growers in Alberta

- J. H. Harrison
 - A. P. Gleave
 - J. Wallbelove
 - L. L. Gray
 - M. W. Stralioff
- (Representing grain growers in Saskatchewan

- W. J. Parker
 - R. Barrett
 - Ray Mitchell
- (Representing grain growers in Manitoba

G. Constable, representing grain growers in British Columbia

L. Bell, representing Plant Products Division, Department of Agriculture

Committee on Eastern Grain Standards, as at
December 31, 1957

- R. W. Milner, Chief Commissioner, Board of Grain Commissioners
- S. Loptson, Commissioner, Board of Grain Commissioners
- G. W. McConnell, Commissioner, Board of Grain Commissioners
- A. F. Dollery, Chief Grain Inspector, Board of Grain Commissioners

- W. G. Thomson, representing Montreal Board of Trade
- E. D. Sullivan, representing Toronto Board of Trade
- C. Gordon McAuley, representing exporters of grain

- F. H. Dunford
 - H. Norman Davis
- (Representing millers of wheat in the Eastern Division

- J. E. Heaney
 - A. McLean
- (Representing grain growers in Ontario

- G. C. Nichols, representing growers of corn
- E. B. Paterson, Additional.
- A. Bowman, Additional.

APPENDIX B

Grain Appeal Tribunals

Winnipeg	Calgary	Edmonton
D. E. Ross (Chairman)	R. E. Forrester (Chairman)	A. M. Greighton (Chairman)
E. A. Sangster	B. Jenkins	C. C. Young
Wm. E. McLeod	J. Tranter	M. G. Wood
G. A. Turner	W. M. Pringle	J. F. Schofield
James Gregory	A. E. Jones	T. Stickney
R. C. Sproule	W. G. McLeod	D. G. MacKeracher
J. P. Lazenty	J. C. Arbuthnot	H. A. Haggarty
D. K. Mills	A. Watson	C. E. Sage
G. I. Ross	G. R. Daston	Ross Saunders
H. Kawka (Secretary)		

Toronto	Montreal
C. R. Coatsworth	P. J. Smith (Chairman)
E. C. Pratt	A. W. Brown
C. W. Helmbecker	E. B. Paterson
W. A. Robertson	J. A. Byrne
E. D. Sullivan	J. M. Vittie
J. Elder	G. D. Robinson
D. G. Kay, Jr. (Secretary)	Mrs. Mariel B. Hunter (Secretary)

For information on Appeals of Carlot Inspections refer to Appendix E,
Table E-7.

APPENDIX C

LICENCE AND BONDING BRANCH

C. F. Spittle, Licensing Officer

LICENCES ARE ISSUED BY THE BOARD UNDER THE PROVISIONS OF SECTION 79 OF THE CANADA GRAIN ACT WHICH SECTION ALSO PROVIDES THAT EVERY APPLICANT FOR A LICENCE SHALL FURNISH SECURITY BY BOND OR OTHERWISE FOR THE DUE PERFORMANCE BY THE LICENSEE OF ALL OBLIGATIONS IMPOSED UPON HIM BY THE ACT.

THE ACT PROVIDES THAT NO RAILWAY COMPANY OR VESSEL SHALL RECEIVE ANY WESTERN GRAIN FROM ANY ELEVATOR OR DISCHARGE ANY SUCH GRAIN INTO ANY ELEVATOR UNLESS SUCH ELEVATOR IS LICENSED.

THE ACT ALSO PROVIDES THAT, EXCEPT FOR CONTRACTS FOR THE PURCHASE OF GRAIN THE CONSIDERATION PAYABLE UNDER WHICH IS TO BE PAID IN FULL IN CASH AT THE TIME OF THE MAKING THEREOF OR CONTRACTS FOR THE PURCHASE OF GRAIN MADE ON THE PREMISES OF A RECOGNIZED GRAIN EXCHANGE BY OR THROUGH BROKERS WHO ARE MEMBERS OF SUCH EXCHANGE, NO PERSON IN THE WESTERN DIVISION MAY MAKE ANY CONTRACT FOR THE PURCHASE OF WESTERN GRAIN BY REFERENCE TO ANY GRADE NAME NOR ACT ON BEHALF OF ANY OTHER PERSON IN MAKING SUCH CONTRACT ON A COMMISSION BASIS, UNLESS HE IS LICENSED UNDER THE CANADA GRAIN ACT AS A GRAIN DEALER, TRACK BUYER OR GRAIN COMMISSION MERCHANT.

During the crop year 1956-57, 5,540 licences were issued to 109 firms and individuals to handle grain under the Canada Grain Act, or fifteen less than in the previous crop year. In addition, country elevator licensees were authorized to use 417 special annexes, comprising flour sheds, coal sheds, skating rinks and other buildings.

On July 31, 1957, with 5,468 elevator licences in force and 403 buildings authorized for supplementary storage, the total licensed storage capacity was

613,160,260 bushels in elevators, and 15,142,090 bushels in special annexes to country elevators. In addition, 50 Track Buyers', Commission Merchants' and Grain Dealers' licenses were also in force. The following table gives a comparative statement of numbers and classes of licenses in force and storage capacity:

Kind of license	Licenses in force July 31		Licensed storage capacity July 31	
	1957	1956	1957	1956
Country Elevators	5,360	5,378	360,886,950	353,884,150
Special Annexes to Country Elevators	*	*	15,142,090	14,518,640
Terminals and Mill Elevators . . .	78	77	158,171,010	154,093,610
Eastern Elevators	30	30	94,102,300	92,182,300
Track Buyers, Commission Merchants and Grain Dealers	50	53	†	†
TOTALS	5,518	5,538	628,302,350	614,678,900

* 493 buildings at July 31, 1957, and 402 buildings at July 31, 1956.

† These licenses do not cover grain storage facilities.

During the crop year, twenty-two elevator licenses were cancelled, one on account of licenses ceasing operation, three destroyed by fire, ten dismantled by licensees, and eight converted into annexes. The authorities covering fourteen special annexes were also cancelled.

Seventy country elevator licenses were suspended by the Board for varying periods during rehabilitation and reconstruction of buildings, and one for infraction of the Act. Sixty-seven of these were subsequently reinstated, one was cancelled and three were still under suspension at July 31, 1957.

Guarantee bonds in the amount of \$29,972,836.50 executed by fifteen

approved surety companies were deposited with the Board as security under Section 79 of the Canada Grain Act to cover operations of licensees during 1956-57. Three licensees deposited negotiable Government bonds with a par value of \$8,500 in lieu of furnishing the usual form of surety bonds.

At December 1, 1957, at which date essentially all licences were issued for the 1957-58 crop year, there were 5,461 elevator licences in force. In addition, 377 buildings other than elevators were authorized for supplementary storage. The total licensed storage capacity as at December 1, 1957, was 617,239,060 bushels in elevators and 14,952,690 bushels in special annexes, or a total increase of 10,014,050 bushels since December 1, 1956. The total storage capacity by provinces is: Manitoba, 59.7 million; Saskatchewan, 214.3; Alberta, 141.6; British Columbia 26.6; Ontario, 153.1; and Quebec and the Maritimes, 36.9 million bushels.

Table C-1. Number and Kind of Licences Issued and Licensed Storage Capacity, as at December 1st each year for the Past Five Years.

Kind of License	1957	1956	1955	1954	1953
Number of Licences					
Public Country Elevator.....	5,349	5,954	5,369	5,352	5,326
Private Country Elevator.....	10	9	10	10	10
Mill Elevator.....	33	32	33	36	40
Public Terminal Elevator.....	0	5	5	6	6
Semi-Public Terminal Elevator	40	34	35	34	35
Private Terminal Elevator....	5	5	5	7	6
Eastern Elevator.....	30	30	30	29	29
Track Buyer.....	21	21	21	21	21
Commission Merchant.....	23	23	25	25	26
Grain Dealer.....	5	5	7	8	9
TOTALS.....	5,510	5,518	5,540	5,528	5,508
Licensed Capacity					
thousands of bushels					
Public Country Elevator.....	364,661	356,269	349,953	332,454	318,224
Special Annexes.....	14,953	15,080	8,522	5,369	4,411
Private Country Elevator.....	369	337	349	349	349
Mill Elevator.....	13,513	13,451	13,525	13,429	13,495
Public Terminal Elevator.....	-	17,100	17,100	18,350	18,350
Semi-Public Terminal Elevator	137,524	118,774	116,624	112,873	114,523
Private Terminal Elevator....	7,070	7,070	7,070	7,295	7,220
Eastern Elevator.....	94,102	94,102	92,182	90,845	84,929
TOTALS.....	632,192	622,177	599,325	580,964	561,501

Table C-2. Licensed Elevators and Storage as at December 31, 1957.

Kind of Elevator	Ontario	Manitoba	Saskatch- ewan	Alberta	British Columbia	Quebec and Maritimes	Totals
Number of Elevators							
Public Country...	2	697	2,921	1,706	17	0	5,343
Private Country..	0	3	2	5	0	0	10
Mill.....	3	7	6	10	7	0	33
Public Terminal..	0	0	0	0	0	0	0
Semi-Public Terminal	24	2	2	3	9	0	40
Private Terminal.	2	2	0	1	0	0	5
Eastern.....	18	0	0	0	0	12	30
TOTALS.....	49	711	2,931	1,725	33	12	5,461
Storage Capacity							
thousands of bushels							
Public Country...	65	47,863	190,743	124,202	1,788	0	364,661
Special Annexes.. †	1,400	495	7,549	5,509	0	0	14,953
Private Country..	0	75	61	233	0	0	369
Mill.....	1,480	2,095	4,916	4,095	927	0	13,513
Public Terminal..	0	0	0	0	0	0	0
Semi-Public Terminal	190,517	6,000	11,000	6,100	23,907	0	137,524
Private Terminal	2,435	3,145	0	1,490	0	0	7,070
Eastern	57,161	0	0	0	0	36,941	94,102
TOTALS.....	153,058	59,673	214,269	141,629	26,622	36,941	632,192

† Off-site storage.

COLLECTION OF ONE PER CENT LEVY

The collection during the crop year 1956-57 of the one per cent levy made by this office under provisions of the Prairie Farm Assistance Act is recorded at \$6,205,862.54, a decrease of \$34,038.23 from collections during the previous crop year.

Table C-3. Amounts Collected and Grain Purchased under the One Per Cent Levy, Prairie Farm Assistance Act, Crop Year 1956-57

Province	Wheat	Oats	Barley	Rye	Total
	\$	¢	\$	¢	\$
Manitoba.....	507,732.59	126,356.85	224,004.29	6,479.84	864,573.57
Saskatchewan..	2,915,981.87	186,722.64	480,772.20	24,862.43	3,608,339.14
Alberta.....	1,241,482.94	113,837.30	365,203.94	12,337.15	1,732,861.33
TOTALS...	4,665,197.40	426,916.79	1,069,980.43	43,679.42	6,205,774.04
Amount not allocated to provinces.....					88.50
Total collections August 1, 1956 to July 31, 1957.....					6,205,862.54
Grain Purchases					
thousands of bushels					
Manitoba.....	39,918	21,696	24,207	637	86,458
Saskatchewan..	223,607	27,511	53,818	2,572	307,508
Alberta.....	99,058	19,878	42,949	1,248	163,133
TOTALS...	362,583	69,085	120,974	4,457	557,099

APPENDIX D

REGISTRATION BRANCH

C. J. Browncombe, Registrar

SECTION 127 OF THE CANADA GRAIN ACT REQUIRES THE OPERATORS OR MANAGERS OF PUBLIC TERMINAL, SEMI-PUBLIC TERMINAL AND EASTERN ELEVATORS TO ISSUE WAREHOUSE RECEIPTS FOR ALL GRAIN TAKEN INTO STORE. REGULATIONS NO. 1 AND NO. 2 MADE BY THE BOARD UNDER THE PROVISIONS OF SECTION 15 (22) OF THE CANADA GRAIN ACT REQUIRE THAT ALL SUCH WAREHOUSE RECEIPTS BE REGISTERED WITH THE BOARD AS TO GRADE AND QUANTITY AT THE TIME OF ISSUE AND THAT THESE WAREHOUSE RECEIPTS BE SURRENDERED TO THE BOARD FOR REGISTRATION FOR CANCELLATION WHEN THE GRAIN WHICH THEY REPRESENT HAS BEEN SHIPPED OUT.

During the Crop Year 1956-57, registration service was provided for licensees of 5 public terminal elevators, 35 semi-public terminal elevators and 30 eastern elevators at the offices maintained by the Board at Montreal, Winnipeg and Vancouver.

Table D-1 of this appendix presents the total bushels, by grains, for which warehouse receipts were registered against unloads of grain and registered for cancellation against shipments of grain together with the averages of these handlings for the past ten years for comparison. In addition to these handlings, service was provided to licensees in the Western Division for the daily registration and registration for cancellation of splits, consolidations, grade adjustments and re-issue of warehouse receipts to facilitate the handling of grain and this work remained at normal levels throughout the crop year.

Records were maintained for each licensee in both the Eastern and Western Divisions, by grade, showing the total quantities registered, registered for cancellation or still outstanding daily, while a separate series of records was maintained to provide the full history of registration and cancellation particulars for all warehouse receipts issued by these licensees. Certified statements of

outstanding warehouse receipt grade totals and of handlings for the non-mixing grades of wheat were issued as required for use in connection with the annual weighover of stocks of grain as carried out by Board officials at all terminal and eastern elevators.

The total registrations and registrations for cancellation of all grains for elevators in the Western Division show increases of 45.0 million and 14.0 million bushels respectively over those of the previous crop year and 61.0 million and 45.0 million bushels increases respectively, over those of the ten-year average. While the total bushels registered and registered for cancellation for elevators in the Eastern Division show a decline in comparison to similar handlings for the previous crop year, they show an increase of 44.0 million and 32.0 million bushels respectively, over those of the ten-year average.

Fees for registration service were charged at the rate of 4 cents a thousand bushels for registration and for registration for cancellation in the Western Division, and one cent a thousand bushels for similar service in the Eastern Division. The overall increase in the volume of handlings for registration purposes as shown for the combined Eastern and Western Divisions is reflected in the total fees collected for registration services of \$50,149.67 as compared to the ten-year average of \$45,155.86.

Table D-1. Warehouse Receipt Registrations for Primary and Transfer Receipts and Shipments at Public and Semi-Public Terminal Elevators and Eastern Elevators, by Area and Grain, Crop Year 1956-57 and 10-year Average

Area	Grain	Crop Year 1956-57		10-Year Average, 1946-47 to 1955-56	
		Registered	Registered for Cancellation	Registered	Registered for Cancellation
-thousands of bushels-					
Western Division - Winnipeg, including Lakehead and Churchill	Wheat	212,094	191,096	199,022	196,378
	Oats	49,174	52,303	69,106	71,063
	Barley	71,431	70,049	67,247	66,354
	Flax	22,611	21,419	7,412	7,285
	Rye	6,600	6,739	11,002	10,862
	Mixed Grain	477	472	963	635
	Corn	-	-	41	52
	Other Grains	375	446	84	85
Interior Elevators - Calgary, Edmonton, Lethbridge, Moose Jaw and Saskatoon	Wheat	4,048	5,168	5,234	3,932
	Oats	161	206	498	589
	Barley	1,194	1,285	1,623	1,708
	Flax	629	626	216	221
	Rye	28	31	40	37
	Mixed Grain	-	35	5	25
	Corn	15	8	16	12
	Other Grains	3,393	2,831	333	293
Vancouver and Prince Rupert area	Wheat	107,234	105,221	81,141	80,182
	Oats	560	1,809	2,686	3,724
	Barley	30,212	31,585	8,660	8,446
	Flax	3,523	3,127	209	220
	Rye	-	-	70	66
	Mixed Grain	1	46	49	53
	Corn	-	-	244	283
	Other Grains	3,208	3,197	104	104
Western Division - All Points	Wheat	323,376	301,485	285,397	289,492
	Oats	49,895	54,318	72,290	75,376
	Barley	102,837	102,910	77,530	76,508
	Flax	26,763	25,172	7,837	7,726
	Rye	6,628	6,770	11,112	10,965
	Mixed Grain	478	553	1,017	713
	Corn	15	8	341	347
	Other Grains	6,976	6,474	521	482
Totals - All Grains		516,968	497,699	456,045	452,609

Table D-1. Warehouse Receipt Registrations for Primary and Transfer Receipts and Shipments at Public and Semi-Public Terminal Elevators and Eastern Elevators, by Area and Grain, Crop Year 1956-57 and 10-year Average - concluded

Area	Grain	Crop Year 1956-57		10-Year Average, 1946-47 to 1955-56	
		Registered	Registered for Cancellation	Registered	Registered for Cancellation
-thousands of bushels-					
Eastern Division	Wheat	294,474	277,531	288,833	284,654
	Oats	48,334	48,847	44,134	44,475
	Barley	81,498	81,444	68,580	68,357
	Flax	37,418	37,153	11,611	11,626
	Rye	2,866	3,199	8,910	8,846
	Mixed Grain	470	477	512	491
	Corn	11,103	10,876	16,519	16,578
	Screenings	2,826	2,936	1,030	1,015
	Peas	241	241	48	54
	Soybeans	5,234	5,079	1,977	1,975
	Buckwheat	298	189	279	280
	Other Grains	1,804	1,793	98	97
Totals - All Grains		486,566	469,765	442,531	438,448

A P P E N D I X E

INSPECTION BRANCH

A. F. Dollery, Chief Grain Inspector

UNDER SECTION 32 OF THE CANADA GRAIN ACT, THE GRAIN INSPECTION BRANCH IN THE WESTERN DIVISION SAMPLES AND GRADES ALL GRAIN ENROUTE FROM COUNTRY POINTS TO TERMINAL AND MILL ELEVATORS OR OTHER DESTINATIONS, AT THE PRIMARY INSPECTION POINTS OF WINNIPEG, EDMONTON AND CALGARY. ALL GRAIN IS ALSO SAMPLED AND GRADED ON DELIVERY TO TERMINAL OR MILL ELEVATORS AT BASKATOON, MOOSE JAW, MEDICINE HAT AND LETHBRIDGE, IF SUCH GRAIN HAS NOT PASSED THROUGH AN INSPECTION POINT. IN ADDITION, INSPECTORS RESAMPLE AND CHECK PRIMARY GRADING OF ALL GRAIN UNLOADED INTO TERMINAL AND MILL ELEVATORS AT THE LAKEHEAD, CHURCHILL, PACIFIC COAST AND INTERIOR POINTS, AS WELL AS SAMPLING AND GRADING ALL GRAIN SHIPPED FROM TERMINAL OR MILL ELEVATORS.

IN THE EASTERN DIVISION, SAMPLING AND GRADING SERVICE IS PROVIDED ON REQUEST AT CHATHAM AND TORONTO FOR EASTERN CROWN GRAIN. AT MONTREAL, QUEBEC, SOREL, THREE RIVERS, ST. JOHN AND HALIFAX, GRAIN LOADED INTO VESSELS FOR EXPORT IS SAMPLED AND THE GRADES ARE CHECKED. GRADES OF ALL GRAIN IN STORE IN ALL TERMINAL AND EASTERN ELEVATORS WEIGHED OVER DURING THE CROP YEAR ARE VERIFIED BY INSPECTION BRANCH OFFICIALS.

In the crop year ended July 31, 1957, inspections of western grain at primary points totalled 298,635 carlots compared with 285,521 carlots in the previous crop year. This total is 3.6 per cent higher than the average for the past ten years.

The predominant grade in Red Spring Wheat was No. 3 Manitoba Northern with 29.1 per cent of total wheat inspections. This was mainly due to several heavy frosts experienced in the beginning of the crop year. With 28.8 per cent grading No. 2 Manitoba Northern and 1.3 per cent grading No. 1 Manitoba Northern, the first three grades totalled 59.2 per cent as compared with 65.2 per cent in

the previous crop year. Of the Durum Wheat inspected, 46.2 per cent graded No. 4 C.W. No. 2 C.W. showed a percentage of 4.9 per cent - No. 3 C.W. 15.8 per cent - Extra No. 4 C.W. 19.9 per cent - No. 5 C.W. 9.6 per cent and No. 6 C.W. 1.1 per cent, of total Amber Durum inspections.

In this year's crop 48.1 per cent of the Oats inspected graded No. 1 Feed compared with 54.4 per cent in the previous year. In the higher grades of No. 3 C.W. and Extra No. 1 Feed, the percentages were 24.3 per cent and 20.8 per cent respectively, as compared with 21.0 per cent and 13.1 per cent respectively in the previous year.

The predominant grade in Barley was No. 1 Feed with 31.4 per cent, followed by 3 C.W. 6 Row with 28.2 per cent and Extra 2 Feed with 14.1 per cent. In Rye 52.3 per cent graded 3 C.W. and 22.2 per cent 2 C.W., as compared to the previous crop year, 46.6 per cent and 92.3 per cent respectively. The quality of Flax was good this year with 69.2 per cent grading 1 C.W. and 26.6 per cent 2 C.W., or 95.8 per cent of total flax inspections as compared to the previous year of 80.8 per cent and 15.9 per cent respectively.

Mustard seed carlots inspected this crop year were much higher with 580 carlots as compared to 18 the previous year. The main grade in Mustard Seed was No. 1 Canada Western Oriental with 82.1 per cent.

This crop year showed a vast increase in acreage of Rapeseed with 2,375 carlots being inspected as compared to 642 carlots in the previous crop year.

There was a noticeable increase this year in the number of two pound samples "subject to grade and dockage" submitted. Total inspected being 30,363 as compared to 15,575 the previous year.

Grain inspections on loading to vessels at the Lakehead, Pacific Coast and Churchill terminal elevators totalled 475 million bushels as compared with

452 million bushels in the previous crop year. Export cargoes shipped from St. Lawrence and Atlantic ports, totalling 145 million bushels, were sampled and checked for grade at loading as compared with 191 million bushels in the previous crop year. Cargoes received at Montreal totalling 82 millions were also sampled and grades checked, as compared with 85 million in the previous crop year.

Eastern grown grain sampled and inspected in carlots totalled 8,143 cars of which 7,335 cars were handled by the Chatham office. In the previous crop year the totals were 11,752 and 10,861 respectively. Wheat accounted for 3,773 cars.

Table E-1. Primary Carlot Inspections by Grains, Crop Year 1956-57, compared with 1955-56 and 10-year Average 1946-47 to 1955-56

	10-Year	1956-57	1955-56	10-Year	1956-57	1955-56
	Average			Average		
c a r l o t s			percent of total			
Wheat	194,921	198,796	190,537	67.6	66.5	66.7
Oats	34,791	20,868	21,844	12.1	7.0	7.7
Barley	45,174	55,168	54,625	15.7	18.5	19.1
Rye	6,321	3,399	6,630	2.2	1.1	2.3
Flaxseed	5,505	16,257	10,248	1.9	5.4	3.6
Mixed Grain	580	241	243	0.2	0.1	0.1
Corn	151	182	212	0.1	0.1	0.1
Buckwheat	63	122	143	*	*	0.1
Screenings	457	471	922	0.2	0.2	0.1
Rapeseed	98	2,375	642	*	0.8	0.2
Sunflower Seeds	1	-	-	*	-	-
Peas	85	234	57	*	0.1	*
Mustard Seed	2	580	18	*	0.2	*
Sample Grain	-	2	-	-	*	-
TOTALS	288,149	298,635	285,521	100.0	100.0	100.0

* Less than 0.05%

Table E-2. Primary Carlot Inspections by Points, Crop Year 1956-57, compared with 1955-56 and 10-Year Average 1946-47 to 1955-56

	10-Year	1956-57	1955-56	10-Year	1956-57	1955-56
	Average			Average		
c a r l o t s			percent of total			
Winnipeg	201,036	188,149	185,714	69.8	63.1	65.0
Calgary	35,792	46,993	40,971	12.4	15.7	14.3
Edmonton	29,887	39,526	34,944	10.4	13.2	12.2
Horse Jaw	4,789	4,454	4,503	1.7	1.5	1.6
Saskatoon	6,910	7,304	7,780	2.4	2.4	2.7
Lethbridge	129	628	28	*	0.2	*
Medicine Hat	3,074	1,796	2,275	1.1	0.6	0.8
Vancouver	1,837	585	508	0.6	0.2	0.2
Churchill	4,695	9,200	8,798	1.6	3.1	3.2
TOTALS	288,149	298,635	285,521	100.0	100.0	100.0

* Less than 0.05%

Table E-3. Primary Carlot Inspections, Crop Year 1956-57, by Grain and Grades

Grade	Carlots	Percentage	Percentage of Total Wheat Inspections
W H E A T			
1 Manitoba Northern	2,412	1.3	-
2 Manitoba Northern	53,489	28.8	-
3 Manitoba Northern	53,918	29.1	-
4 Manitoba Northern	25,758	13.9	-
No. 4 Special	51	*	-
No. 5	29,049	15.6	-
No. 5 Special	123	0.1	-
No. 6	8,372	4.5	-
Feed	423	0.2	-
Sample	358	0.2	-
Smutty	179	0.1	-
Rejected	5,973	2.9	-
Tough	6,222	3.3	-
Damp	41	*	-
Broken Red Spring	2	*	-
Condemned	4	*	-
Total Red Spring Wheat	185,768	100.0	93.5
2 Canada Western Garnet	5	1.8	-
3 Canada Western Garnet	190	67.6	-
4 Canada Western Garnet	14	5.0	-
Smutty Canada Western Garnet	1	0.4	-
Rejected Canada Western Garnet	8	2.8	-
Tough Canada Western Garnet	63	22.4	-
Total Garnet Wheat	281	100.0	0.1
1 Canada Western Amber Durum	14	0.1	-
2 Canada Western Amber Durum	545	4.9	-
3 Canada Western Amber Durum	1,758	15.8	-
Extra 4 Canada Western Amber Durum	2,225	19.9	-
4 Canada Western Amber Durum	5,146	46.2	-
5 Canada Western Amber Durum	1,076	9.6	-
6 Canada Western Amber Durum	118	1.1	-
Smutty Canada Western Amber Durum	17	0.2	-
Rejected Canada Western Amber Durum	117	1.0	-
Tough Canada Western Amber Durum	116	1.0	-
Damp Canada Western Amber Durum	5	*	-
Sample Canada Western Amber Durum	20	0.2	-
Total Amber Durum Wheat	11,157	100.0	5.6

Table E-3. Primary Carlot Inspections, Crop Year 1956-57, by Grain and Grade - continued

Grade	Carlota	Percentage	Percentage of Total Wheat Inspections
W H E A T - concluded			
2 Canada Western Soft White Spring . . .	38	19.1	-
3 Canada Western Soft White Spring . . .	94	47.2	-
4 Canada Western Soft White Spring . . .	65	32.7	-
Tough Canada Western Soft White Spring .	2	1.0	-
Total Soft white Spring Wheat . . .	199	100.0	0.1
1 Canada western Mixed Wheat.	12	10.3	-
2 Canada Western Mixed Wheat.	7	6.0	-
3 Canada western Mixed Wheat.	34	29.3	-
4 Canada Western Mixed Wheat.	25	21.6	-
5 Canada western Mixed wheat.	11	9.5	-
6 Canada Western Mixed Wheat.	17	14.7	-
Scutty Canada Western Mixed Wheat . . .	1	0.9	-
Rejected Canada Western Mixed Wheat . .	5	4.3	-
Tough Canada Western Mixed Wheat. . . .	4	3.4	-
Total Mixed Wheat.	116	100.0	0.1
1 Alberta Red Winter.	210	16.5	-
2 Alberta Winter.	714	56.0	-
3 Alberta Winter.	250	19.6	-
4 Alberta Winter.	61	4.8	-
Scutty Alberta Winter	10	0.8	-
Rejected Alberta Winter	30	2.3	-
Total Alberta Winter wheat	1,275	100.0	0.6
Total All Wheats	198,796	-	100.0

Table E-3. Primary Carlet Inspections, Crop Year 1956-57 by Grain and Grades - continued

Grade	Carlots	Percentage
O A T S		
2 Canada Western	29	0.1
Extra 3 Canada Western	426	2.0
3 Canada Western	5,077	24.3
Extra 1 Feed	4,931	20.8
1 Feed	10,092	48.1
2 Feed	581	2.8
3 Feed	100	0.5
Mixed Feed Oats	4	*
Rejected Oats	31	0.2
Sample Oats	34	0.2
Tough	218	1.0
Damp	3	*
Mixed Feed Oats Groats	2	*
Total Oats	20,868	100.0
B A R L E Y		
2 Canada Western Six Row	899	1.6
3 Canada Western Six Row	15,572	28.2
4 Canada Western Six Row	2,001	3.6
1 Canada Western Two Row	2	*
2 Canada Western Two Row	203	0.4
3 Canada Western Two Row	4,200	7.6
1 Feed	17,263	31.4
Extra 2 Feed	7,798	14.1
2 Feed	3,344	6.1
3 Feed	1,147	2.1
Rejected	187	0.3
Sample	45	0.1
Tough	2,490	4.5
Damp	17	*
Total Barley	55,168	100.0

Table E-3. Primary Carlot Inspections, Crop Year 1956-57, by Grain and Grades - continued

Grade	Carlots	Percentage
R Y E		
1 Canada Western	2	0.1
2 Canada Western	740	22.2
3 Canada Western	1,749	52.3
4 Canada Western	403	12.1
Ergoty Rye	337	10.1
Rejected	21	0.6
Sample	3	0.1
Tough	79	2.4
Damp	1	*
Ergot and Other Grains	4	0.1
TOTAL RYE	3,339	100.0

F L A X S E E D		
1 Canada Western	11,251	69.2
2 Canada Western	4,321	26.6
3 Canada Western	457	2.8
4 Canada Western	7	*
Rejected	17	0.1
Sample	25	0.2
Tough	153	0.9
Damp	26	0.2
TOTAL FLAXSEED	16,257	100.0

M I X E D G R A I N		
1 Canada Western	35	14.5
2 Canada Western	22	9.1
3 Canada Western	95	39.5
4 Canada Western	3	1.2
Rejected	16	6.6
Sample	53	22.0
Tough	9	3.7
Damp	8	3.4
TOTAL MIXED GRAIN	241	100.0

Table E-3. Primary Carlot Inspections, Crop Year 1956-57, by Grain and Grades -
continued

Grade	Carlots	Percentage
C O R N		
1 Canada Western Yellow	10	5.5
2 Canada Western Yellow	37	20.3
3 Canada Western Yellow	19	10.4
4 Canada Western Yellow	8	4.4
5 Canada Western Yellow	2	1.1
Tough	5	2.8
Others	1	0.6
U.S.A. Origin	100	54.9
TOTAL CORN	182	100.0
M U S T A R D S E E D		
Extra 1 Canada Western Yellow	1	0.2
2 Canada Western Yellow	1	0.2
1 Canada Western Oriental	477	82.1
2 Canada Western Oriental	23	4.0
3 Canada Western Oriental	4	0.7
1 Canada Western Brown	30	5.2
2 Canada Western Brown	4	0.7
3 Canada Western Brown	2	0.3
Sample Canada Western Oriental	1	0.2
Sample Canada Western Brown	3	0.5
Others	22	3.8
U.S.A. Mustard Seed	12	2.1
TOTAL MUSTARD SEED	580	100.0
S C R E E N I N G S		
1 Feed	7	1.5
Uncleaned	316	67.1
Refuse	113	24.0
Sample	35	7.4
TOTAL SCREENINGS	471	100.0

Table E-3. Primary Carlot Inspections, Crop Year 1956-57, by Grain and Grades -
concluded

Grade	Carlots	Percentage
Buckwheat	122	-
Peas	234	-
Rapeseed	2,375	-
Sample Grain	2	-
Grand Total	298,635	-

* Less than 0.05%

Table E-4. Carlots of Tough, Damp and Straight Grain Inspected at Primary Inspection Points, Crop Year 1956-57.

Grain	Tough	Damp	Tough and Damp	Straight	Total
Wheat	6,407	46	6,453	192,343	198,796
Oats	218	3	221	20,617	20,868
Barley	2,490	17	2,507	52,661	55,168
Rye	79	1	80	3,259	3,339
Flaxseed	153	26	179	16,078	16,257
Others	14	8	22	4,185	4,207
All Grains	9,361	101	9,462	289,173	298,635

	Percentage of Total				
	%	%	%	%	%
Wheat	3.2	*	3.2	96.8	100.0
Oats	1.0	*	1.1	98.9	100.0
Barley	4.5	*	4.5	95.4	100.0
Rye	2.4	*	2.4	97.6	100.0
Flaxseed	0.9	0.2	1.1	98.9	100.0
Others	0.3	0.2	0.5	99.5	100.0
All Grains	3.1	*	3.2	96.8	100.0

* Less than 0.05%

Table E-5. Number of Two Pound Samples "Subject to Grade and Dockage" Inspected Crop Year 1956-57 Compared with the Crop Year 1955-56

Point	1956-57	1955-56
	Number of Samples	
Winnipeg	23,183	11,110
Calgary	2,148	1,271
Edmonton	1,913	1,079
Moose Jaw	228	66
Saskatoon	1,184	748
Lethbridge	1,647	1,246
Medicine Hat	60	55
TOTALS	30,363	15,575

Table E-6. Carlots Re-inspected, Crop Year 1956-57

Point	Inspected	Re-Inspected	Un-changed	Grades Raised	Grades Lowered	Dockage Raised	Dockage Lowered
Number of Carlots							
Winnipeg	188,149	13,150	5,378	3,682	276	303	3,511
Calgary	46,993	4,406	1,758	1,330	83	176	1,059
Edmonton	39,526	5,902	2,524	1,363	39	283	1,693
Saskatoon	7,304	324	295	28	-	-	1
Moose Jaw	4,454	351	323	26	2	-	-
Medicine Hat	1,796	76	42	23	9	-	2
Lethbridge	628	-	-	-	-	-	-
Vancouver	583	16	13	3	-	-	-
Churchill	9,200	-	-	-	-	-	-
TOTALS	298,635	24,225	10,333	6,455	409	762	6,266
Percentage of Total Re-inspections							
	%	%	%	%	%	%	%
Winnipeg	-	100	40.9	28.0	2.1	2.3	26.7
Calgary	-	100	39.9	30.2	1.9	4.0	24.0
Edmonton	-	100	42.7	23.1	0.7	4.8	28.7
Saskatoon	-	100	91.1	8.6	-	-	0.3
Moose Jaw	-	100	92.0	7.4	0.6	-	-
Medicine Hat	-	100	55.9	30.3	11.8	-	2.6
Lethbridge	-	100	-	-	-	-	-
Vancouver	-	100	81.2	18.8	-	-	-
Churchill	-	100	-	-	-	-	-
TOTALS	-	100	42.7	26.6	1.7	3.1	25.9
Percentage of Total Inspections							
	%	%	%	%	%	%	%
Winnipeg	100	7.0	2.9	2.0	0.1	0.2	1.9
Calgary	100	9.4	3.7	2.8	0.2	0.4	2.3
Edmonton	100	14.9	6.4	3.4	0.1	0.7	4.3
Saskatoon	100	4.4	4.0	0.4	-	-	-
Moose Jaw	100	7.9	7.3	0.6	-	-	-
Medicine Hat	100	4.2	2.3	1.3	0.5	-	0.1
Lethbridge	100	-	-	-	-	-	-
Vancouver	100	2.7	2.2	0.5	-	-	-
Churchill	100	-	-	-	-	-	-
TOTALS	100	8.1	3.5	2.2	0.1	0.3	2.1

Table E-7. Summary of Carlot Inspections Appealed, Crop Year 1956-57

Item	Winnipeg		Edmonton		Calgary		Total	
	Cars	Percent	Cars	Percent	Cars	Percent	Cars	Percent
Left as graded	684	93.6	220	77.7	598	85.9	1,502	87.9
Grades Raised	45	6.2	62	21.9	96	13.8	203	11.9
Grades Lowered	-	-	1	0.4	2	0.3	3	0.2
TOTALS	729	100.0	283	100.0	696	100.0	1,708	100.0
Total Cars Inspected							298,635	100.00
Total Appeals							1,708	0.57
Total Grades Changed							206	0.07

Table E-8. Vessel Shipments Inspected, Crop Year 1956-57

Grain	Fort William and Port Arthur	Vancouver	Victoria	Prince Rupert	Churchill	Total
	bu.	bu.	bu.	bu.	bu.	bu.
Wheat	171,357,190	102,882,125	1,199,669	492,883	16,250,319	292,182,186
Oats	47,728,441	527,895	-	-	101,200	48,357,536
Barley	72,481,270	22,556,631	-	8,157,986	-	103,195,887
Rye	5,872,794	-	-	-	-	5,872,794
Flaxseed	13,689,845	2,438,195	711,590	-	-	16,839,630
Buckwheat	162,717	-	-	-	-	162,717
*Sample Grain	219,328	-	-	-	-	219,328
*Screenings	4,189,426	-	-	424	110,800	4,300,650
*Canada Rapeseed	-	1,340,220	1,051,947	-	-	2,392,167
*Mustard Seed	-	1,111,665	-	-	-	1,111,665
*U.S.A. Mustard Seed	-	66,907	-	-	-	66,907
TOTALS	315,701,011	130,923,638	2,963,206	8,651,293	16,462,319	474,701,467

* In bushels of 50 pounds.

Table E-9. Carlot Shipments ex Terminal Elevators Inspected, Crop Year 1956-57

Grain	Number of Carlots				
	Winnipeg	Fort William and Port Arthur	Calgary	Edmonton	Moose Jaw
Wheat	644	1,980	566	230	1,087
Oats	271	2,124	25	120	121
Barley	321	1,303	729	35	49
Flaxseed	56	4,051	165	206	24
Rye	1	440	16	-	1
Mixed Grain	87	-	27	2	4
Corn	10	-	-	-	-
Buckwheat	3	4	-	-	-
Peas	71	-	-	-	-
Rapeseed	4	110	98	397	-
Screenings	356	5,240	238	140	110
Sample Grain	-	254	-	-	-
TOTALS	1,824	15,506	1,864	1,130	1,396

Grain	Number of Carlots				
	Saskatoon	Lethbridge	Medicine Hat	Vancouver, Victoria & Prince Rupert	Churchill
Wheat	1,632	542	13	549	-
Oats	128	-	9	339	-
Barley	29	-	-	214	-
Flaxseed	15	19	171	8	-
Rye	-	-	-	1	-
Mixed Grain	-	1	-	18	-
Corn	-	-	-	-	-
Buckwheat	-	-	-	-	-
Peas	-	-	-	-	-
Rapeseed	827	-	-	4	-
Mustard Seed	-	1	-	-	-
Screenings	689	1	3	1,669	8
TOTALS	3,320	564	196	2,796	8

Table E-10. Carlot Inspections Eastern Grain, Crop Year 1956-57, by Grains and Points.

Grain	Montreal	Toronto	Chatham	Total
			carlots	
Wheat	-	453	3,320	3,773
Oats	-	-	-	-
Barley	-	9	159	168
Rye	-	-	30	30
Buckwheat	1	-	17	18
Corn	1	4	1,870	1,875
Beans	-	-	259	259
Soybeans	-	338	1,680	2,018
Flaxseed	-	2	-	2
TOTALS	2	806	7,335	8,143

Table E-11. Carlot Inspections Eastern Grain, Crop Year 1956-57, by Grains, Grades and Points.

Grade	Montreal	Toronto	Chatham	Total
			carlots	
			W H E A T	
1 Canada Eastern White Winter	-	25	555	580
2 Canada Eastern White Winter	-	123	988	1,111
3 Canada Eastern White Winter	-	12	149	161
4 Canada Eastern White Winter	-	-	14	14
5 Canada Eastern White Winter	-	-	9	9
1 Canada Eastern Mixed Winter	-	-	143	143
2 Canada Eastern Mixed Winter	-	-	146	146
3 Canada Eastern Mixed Winter	-	-	19	19
6 Canada Eastern Winter	-	8	15	23
Tough	-	272	1,179	1,451
Smutty	-	-	2	2
Weevilly	-	-	15	15
Infested	-	-	12	12
Damp	-	5	30	35
Sample	-	7	42	49
Condemned	-	1	2	3
TOTALS, WHEAT	-	453	3,320	3,773

Table E-11. Carlot Inspections Eastern Grain, Crop Year 1956-57, by Grades, Grades and Points - continued

Grade	Montreal	Toronto	Chatham	Total
BARLEY				
earlots				
2 Canada Eastern Six Row.	-	-	1	1
3 Canada Eastern Six Row.	-	-	10	10
4 Canada Eastern.	-	1	82	83
5 Canada Eastern.	-	1	6	7
6 Canada Eastern.	-	-	1	1
Tough	-	2	55	57
Damp.	-	1	3	4
Sample.	-	4	1	5
TOTALS, BARLEY	-	9	159	168
R Y E				
2 Canada Eastern.	-	-	15	15
4 Canada Eastern.	-	-	1	1
Tough	-	-	11	11
Damp.	-	-	2	2
Sample.	-	-	1	1
TOTALS, RYE.	-	-	30	30
BUCKWHEAT				
2 Canada Eastern.	-	-	1	1
Tough	-	-	6	6
Damp.	1	-	10	11
TOTALS, BUCKWHEAT.	1	-	17	18
C O R N				
Extra Dry 1 Canada Eastern Yellow.	-	-	50	50
1 Canada Eastern Yellow	-	-	489	489
Extra Dry 2 Canada Eastern Yellow	-	-	95	95
2 Canada Eastern Yellow	1	-	339	340
Extra Dry 3 Canada Eastern Yellow	-	-	122	122
3 Canada Eastern Yellow	-	-	167	167
Extra Dry 4 Canada Eastern Yellow	-	-	51	51
4 Canada Eastern Yellow	-	-	38	38

Table E-11. Carlot Inspections Eastern Grain, Crop Year 1956-57, by Grains, Grades and Points - concluded

Grade	Montreal	Toronto	Chatham	Total
C O R N - concluded				
carlots				
Extra Dry 5 Canada Eastern Yellow.	-	-	3	3
5 Canada Eastern Yellow.	-	1	2	3
Tough.	-	-	240	240
Damp	-	-	184	184
Moist.	-	-	80	80
Wet.	-	-	9	9
Sample	-	3	1	4
TOTALS, CORN.	1	4	1,870	1,875
B E A N S				
1 Canada Eastern Pea	-	-	71	71
2 Canada Eastern Pea	-	-	105	105
3 Canada Eastern Pea	-	-	12	12
4 Canada Eastern Pea	-	-	1	1
Tough.	-	-	69	69
Damp	-	-	1	1
TOTALS, BEANS	-	-	259	259
S O Y B E A N S				
1 Canada Yellow.	-	83	751	834
2 Canada Yellow.	-	233	378	611
3 Canada Yellow.	-	6	166	172
4 Canada Yellow.	-	1	118	119
5 Canada Yellow.	-	-	29	29
Tough.	-	15	213	228
Damp	-	-	20	20
Moist.	-	-	2	2
Sample	-	-	3	3
TOTALS, SOYBEANS.	-	338	1,680	2,018
F L A X S E E D				
Tough.	-	2	-	2
TOTALS, FLAXSEED.	-	2	-	2
TOTALS, ALL GRAINS.	2	806	7,335	8,143

Table E-12. Cargo Inspections Eastern Grain, Crop Year 1956-57

Grain	St. John and Halifax	Montreal	Toronto	Chatham	Total
	bu.	bu.	bu.	bu.	bu.
Wheat	-	-	-	852,112	852,112
Corn	-	-	-	1,326,621	1,326,621
Soybeans	127,224	210,400	337,471	1,309,597	1,984,692
TOTALS.	127,224	210,400	337,471	3,488,330	4,163,425

Table E-12A. Cargo Inspections, Western Grain, Crop Year 1956-57

Grain	St. John and Halifax	Montreal	Toronto	Chatham	Total
	bu.	bu.	bu.	bu.	bu.
Flaxseed	7,401,543	618,898	-	-	8,020,441
Rapeseed	-	11,146	-	-	11,146
TOTALS.	7,401,543	630,044	-	-	8,031,587

Table E-13. Inspections, Eastern Grain in Bins or Warehouses, Crop Year 1956-57

Grain	Montreal	Toronto	Chatham	Total
	bu.	bu.	bu.	bu.
Oats	7,087	-	-	7,087
Buckwheat	12,537	-	-	12,537
Beans	-	-	152,474	152,474
TOTALS.	19,624	-	152,474	172,098

Table E-14. Inward and Export Cargoes Sampled and Grade Checked, Crop Year 1956-57

	Montreal	Sorel	Three Rivers	Quebec	Halifax and St. John	Total
	bu.	bu.	bu.	bu.	bu.	bu.
EASTERN GRAIN						
Inward	1,889,681	-	-	-	-	1,889,681
Export	1,328,806	-	-	-	342,607	1,671,413
WESTERN GRAIN						
Inward	77,881,954	112,707	-	-	-	77,994,661
Export	85,200,510	13,136,257	11,601,522	10,685,864	21,517,667	142,141,850
U.S. GRAIN						
Inward	2,248,527	-	-	-	-	2,248,527
Export	1,272,832	-	-	-	-	1,272,832
TOTALS	169,822,310	13,248,964	11,601,522	10,685,864	21,860,274	227,218,964

Table E-15. Grain Sampled but not Inspected, Crop Year 1956-57

	Montreal	Toronto and Chatham	Sorel, Three Rivers and Quebec	Halifax and St. John	Total
EASTERN GRAIN					
Carlots.	22	12	-	-	34
Inward Cargoes (bu.)	82,330	-	-	-	82,330
Outward Cargoes (bu.)	156,239	-	-	-	156,239
Bin Lots (bu.)	484,539	-	-	-	484,539
WESTERN GRAIN					
Carlots.	57	9	-	-	66
Inward Cargoes (bu.)	310,041	-	5,722	-	315,763
Outward Cargoes (bu.)	2,998,835	-	1,055,733	966,027	5,018,595
Bin Lots (bu.)	145,273	333,960	88,882	-	568,115
U.S.A. GRAIN					
Carlots.	49	-	-	-	49
Inward Cargoes (bu.)	1,554,245	-	-	-	1,554,245
Bin Lots (bu.)	412,968	-	95,570	-	508,538
TOTALS - Cars.	128	21	-	-	149
- Bushels	6,144,470	333,960	1,243,907	966,027	8,688,364

APPENDIX F

GRAIN WEIGHING BRANCH

J. J. Manson, Chief Grain Weighman

UNDER THE PROVISIONS OF SECTIONS 33 AND 124 OF THE CANADA GRAIN ACT, ALL GRAIN RECEIVED AT OR SHIPPED FROM LICENSED TERMINAL ELEVATORS IS WEIGHED UNDER THE SUPERVISION OF THE BOARD'S WEIGHING STAFFS. WEIGHING SERVICES ARE ALSO PROVIDED AT LICENSED MILL ELEVATORS.

During the Crop Year 1956-57, forty-five public, semi-public and private terminal elevators and twenty-eight mill elevators in the Western Division were serviced.

All scales and the equipment for transferring grain to scales on receipt and for shipment in all licensed terminal elevators and serviced mill elevators were regularly inspected during the crop year under the provisions of Section 92 of the Act. In accordance with the special arrangement with the Standards Branch of the Department of Trade and Commerce, all scales in licensed terminal and eastern elevators were inspected, verified and stamped by the Board's Scale Inspector acting as an inspector under the Weights and Measures Act. A semi-annual inspection was also made of all scales at terminal elevators to ascertain if scales were maintaining their accuracy. Special inspections were also made when any doubt arose as to the accuracy of any particular scale.

New installations of dust control and other elevator equipment in terminal and eastern elevators were inspected to ensure that such equipment did not affect the accuracy of the weighing of grain received at or shipped from these elevators.

During the crop year under review, 305,276 car lots of grain were weighed on receipt at terminal and mill elevators in the Western Division and

of these car lots, 56,141 or 18.3% were reported leaking and 7,877 or 2.5% were without seals or had defective seals.

This Branch maintained a close checking of reported outturns at eastern elevators of cargoes loaded at Lakehead terminals and investigations were made in cases of reported excessive shortages with a view to assessing the liability in cases where such could be established.

Under provisions of Sections 139 and 140 of the Canada Grain Act, weighovers were conducted at thirty terminal elevators and at twenty-one eastern elevators. Results were submitted to the Board's Statistics Branch for comparison with outstanding warehouse receipts and preparation of official statements.

The following tables summarize the grain weighed and other information relating to the work of this Branch.

Table F-1. Gross Quantities of All Grains Weighed at Terminal Elevators in the Western Division during 1956-57 Crop Year

Point	Wheat bu.	Oats bu.	Barley bu.	Rye bu.	Flaxseed bu.	Canadian Corn bu.	Canadian Buckwheat bu.	Canadian Peas bu.	Miscellaneous lbs.
R E C E I P T S									
Fort William-Port Arthur	201,127,804	50,906,446	80,389,194	6,780,120	26,347,739	-	205,070	3,302	91,530,723
Vancouver-New Westminster	108,765,472	563,973	22,464,424	-	3,072,573	-	-	-	114,069,539
Victoria	1,506,560	4,249	1,250	-	869,482	-	-	-	52,500,090
Prince Rupert	-	-	8,215,368	-	-	-	-	-	-
Churchill	16,576,265	-	-	-	-	-	-	-	-
Calgary	512,000	3,013	1,129,476	28,145	344,388	-	-	-	1,214,170
Edmonton	390,240	114,953	63,546	-	357,933	15,070	-	-	47,979,590
Lethbridge	584,015	-	-	-	30,586	-	-	-	-
Moose Jaw	1,203,458	-	1,968	-	3,218	-	-	-	-
Saskatoon	1,466,213	43,344	-	-	-	-	-	-	110,658,880
North Transcona	348,946	34,706	62,269	2,231	16,006	-	-	-	4,460,300
Total Receipts	332,480,973	51,670,684	112,327,495	6,810,496	31,041,925	15,070	205,070	3,302	422,413,292
S H I P M E N T S									
Fort William-Port Arthur	174,244,302	52,930,425	77,104,511	6,737,285	21,774,473	-	166,046	3,302	720,182,204
Vancouver-New Westminster	103,982,322	1,778,906	22,969,991	-	2,454,188	-	-	-	275,525,104
Victoria	1,201,035	30,160	1,360	-	711,591	-	-	-	57,924,780
Prince Rupert	37,417	-	8,613,453	-	-	-	-	-	7,354,100
Churchill	16,484,320	101,200	-	-	-	-	-	-	6,069,371
Calgary	879,112	5,889	1,221,361	30,691	301,382	-	-	-	13,857,230
Edmonton	424,112	124,872	61,061	-	301,025	8,820	-	-	50,657,640
Lethbridge	1,045,121	-	375	-	27,930	-	-	-	81,520
Moose Jaw	798,795	-	1,968	-	3,218	-	-	-	2,838,820
Saskatoon	2,020,566	75,505	-	-	-	-	-	-	113,215,820
North Transcona	371,714	18,851	60,759	2,231	15,913	-	-	-	4,323,300
Total Shipments	301,488,816	55,065,808	110,034,839	6,770,207	25,589,720	8,820	166,046	3,302	1,252,029,889

Table F-2. Number of Cars Leaking and Cars with Missing Seals at the Lakehead, at Other Points and at Winnipeg Yards, by Railways, for the Crop Year 1956-57.

Destination	Cars Leaking		Missing Seals	
	C.N.R.	C.P.R.	C.N.R.	C.P.R.
Lakehead Elevators and Yards	20,623	20,870	1,971	3,188
Other Points	6,852	7,996	1,370	1,348
Totals	27,475	28,866	3,341	4,536
Totals, both Railways	56,141		7,877	
Winnipeg Yards	1,191	1,613	858	980

Table F-3. Number of Cars Weighed at all Points and Percentage of such Cars found Leaking or with Defective Seals, Crop Years 1955-56 and 1956-57

	Number		Percentage of Total	
	1956-57	1955-56	1956-57	1955-56
Cars Weighed In	305,276	293,489	100.0	100.0
Inward Cars Leaking	56,141	54,349	18.3	18.5
Inward Cars with Missing or Defective Seals	7,877	6,923	2.5	2.4
Cars Weighed Out	30,171	32,615	-	-

Table F-4. Average Reported Outturn Shortages on Vessel Shipments of Grain from Fort William-Port Arthur to Canadian and United States Ports during the 1956-57 Crop Year.

Grain	Bushels Shipped	Shortage in Pounds per 1,000 Bushels	
		1956-57	1955-56
CANADIAN PORTS			
Wheat	148,497,650	31.1	28.4
Durum wheat	16,817,014	15.4	35.9
Oats	37,164,830	21.1	19.1
Barley	51,412,138	28.7	30.3
Rye	1,589,056	46.9	42.4
Flaxseed	13,557,206	21.3	29.3
Buckwheat	121,313	51.1	44.1
Mixed Grain (in lbs.)	3,259,154	.4 lbs. per 1,000 lbs.	-
Sample Grain (in lbs.)	8,680,897	.8 lbs. per 1,000 lbs.	1.1 lbs. per 1,000 lbs.
Screenings (in tons)	54,553	1.1 lbs. per ton	1.7 lbs. per ton
UNITED STATES PORTS			
Wheat	5,442,247	63.7	53.3
Durum Wheat	-	-	-
Oats	10,480,376	53.1	17.2
Barley	21,363,155	43.6	43.7
Rye	4,300,526	36.1	5.6
Flaxseed	28,231	124.0	-
Buckwheat	41,404	111.2	-
Sample Grain (in lbs.)	-	-	1.3 lbs. per 1,000 lbs.
Screenings (in tons)	50,183	-	-
TOTAL CANADIAN AND UNITED STATES PORTS			
Wheat	153,939,897	32.3	29.3
Durum wheat	16,817,014	15.4	35.9
Oats	47,645,206	28.2	19.0
Barley	72,775,293	33.1	35.2
Rye	5,889,582	39.0	31.5
Flaxseed	13,585,437	21.6	29.3
Buckwheat	162,717	64.7	44.1
Mixed Grain (in lbs.)	3,259,154	.4 lbs. per 1,000 lbs.	-
Sample Grain (in lbs.)	8,680,897	.8 lbs. per 1,000 lbs.	1.1 lbs. per 1,000 lbs.
Screenings (in tons)	104,736	.5 lbs. per ton	.9 lbs. per ton

APPENDIX G

STATISTICS BRANCH

E. E. Baxter, Chief Statistician

THE STATISTICS BRANCH RECEIVES REGULAR REPORTS FROM ALL ELEVATORS LICENSED UNDER THE CANADA GRAIN ACT AND FROM THESE RETURNS COMPILES AND PUBLISHES BASIC STATISTICS RELATING TO THE STORAGE AND HANDLING OF GRAIN WITHIN THE CANADIAN ELEVATOR SYSTEM. IT PREPARES AUDIT STATEMENTS OF THE OPERATIONS OF ALL TERMINAL AND EASTERN ELEVATORS, VERIFIES THE INSURANCE CARRIED ON GRAIN STOCKS, SUPPLIES FOR REVIEW BY THE BOARD A DETAILED ANALYSIS OF COUNTRY AND TERMINAL GRAIN HANDLINGS AND CO-OPERATES WITH OTHER BOARD OFFICES IN THE MAINTENANCE OF DETAILED RECORDS OF PRINCIPAL OPERATIONS.

The general statistical bulletins released by this office were continued with only normal adjustments in form during 1956-57. A further expansion in the demand for the weekly "Canadian Grain Position" bulletin indicated the increasing use of this current reference document within the grain trade and related fields. The wider adoption of all grain statistics was also reflected in additional requests for special studies and reports. The Branch's machine accounting unit was adjusted and expanded during the year to meet the needs for further records and statistics in connection with terminal and country elevator records, vessel shipping studies and special scientific analyses carried out by the Board's Grain Research Laboratory. Particular extensions were made in those control records related to terminal and country elevator weighovers.

Following representations from certain trade organizations an investigation was initiated regarding the advisability of changing the unit of grain measurement from the bushel to the hundredweight. A report covering the basic

proposition and initial findings was presented to the Department in May and further study is being carried out.

The facilities and procedures of the office were made available for examination by representatives of foreign nations studying Board operations under the Colombo Plan.

The responsibilities of the office under provisions of the Inland Water Freight Rates Act were met by the examination of vessel charter confirmations covering all lake grain cargoes shipped from Fort William-Port Arthur during the 1957 season. These records covered a total vessel movement from Fort William-Port Arthur elevators of 278.6 million bushels of the five principal grains in 1072 separate cargoes from the opening of the 1957 season of navigation on April 10 to its closing on December 14, 1957.

The records and statements prepared in connection with the grain audits of terminal and eastern elevators under Sections 139 and 140 of the Canada Grain Act have been expanded to provide additional details for Board analysis. Study was made of records procedures necessary to meet proposed changes in screenings dust disposal at terminals.

Detailed records of Canadian grain prices have been maintained as required under Section 21 of the Canada Grain Act and, in pursuance of Section 102, storage value reports and grain insurance documents have been examined to ensure adequate protection to the owners of grain held in licensed elevators.

Annual stock and handling returns from 5,360 country elevators covering 1956-57 operations were examined and tabulated as a basis for statistical records and special analytical reports for Board review. The reporting procedure with respect to country elevator weighups instituted late in 1955-56

was further developed to facilitate the administrative work of the Executive Branch and the Assistant Commissioners.

Summary grain statistics with respect to the 1956-57 crop year and the 1957 season of navigation are presented in table form below. Complete details are published in the Branch's annual export publication - "Canadian Grain Exports 1956-57" and in the "Grain Trade of Canada" released jointly by this office and the Agriculture Division of the Dominion Bureau of Statistics.

Table G-1. Supply and Disposition of Canadian Grain, Crop Year 1956-57

	Wheat	Oats	Barley	Rye	Flaxseed
	bu.	bu.	bu.	bu.	bu.
SUPPLY					
Carry-over July 31, 1956	579,573,811	119,105,841	110,947,935	15,313,037	2,507,471
Production in 1956	573,062,000	524,445,000	269,065,000	8,584,000	34,463,000
Total Supply	1,152,635,811	643,550,841	380,012,935	23,897,037	36,970,471
DISPOSITION					
Exported Overseas	256,884,039	1,065,973	55,318,712	1,094,209	21,582,468
Exported to U. S. A.	5,871,501	17,615,326	21,562,199	4,353,311	-
Consumed in Canada *	160,677,838	398,799,416	160,400,136	4,289,281	7,807,435
Total Disposition *	423,433,378	417,480,715	237,281,047	9,736,801	29,389,903
CARRY-OVER (July 31, 1957)					
On Farms (estimated)	319,160,000	172,100,000	80,980,000	10,640,000	1,520,000
In Country, Private Terminal and Mill Elevators	242,003,946	41,860,937	39,095,328	1,521,342	1,704,862
In Public and Semi-Public Terminal Elevators	75,878,162	5,008,836	15,216,469	1,100,752	2,666,281
In Store at and Afloat to Eastern Elevators	73,269,834	4,728,890	5,433,604	424,075	853,402
In Eastern Flour Mills	2,340,000	168,000	75,000	1,000	-
In Transit by Rail - Eastern and Western Divisions	16,339,432	2,098,932	1,845,250	455,067	836,020
In Store and In Transit to the United States	211,059	104,531	86,235	18,000	-
Total in Store July 31, 1957 *	729,202,433	226,070,126	142,731,886	14,160,236	7,580,565

* Subject to revision.

Table G-2.

Production and Producers' Marketings in Western Canada,
by Provinces, Crop Year 1956-57

	Wheat	Oats	Barley	Rye	Flaxseed
	bu.	bu.	bu.	bu.	bu.
PRODUCTION (DBS estimate)					
Manitoba	56,080,000	92,000,000	42,000,000	1,100,000	8,000,000
Saskatchewan	355,000,000	165,000,000	99,000,000	4,100,000	19,000,000
Alberta and British Columbia	141,175,000	147,460,000	123,147,000	1,338,000	7,236,000
Totals	552,175,000	404,460,000	264,147,000	6,538,000	34,236,000
PRODUCERS' MARKETINGS					
(a) At Country Elevators					
Manitoba	39,147,481	21,657,694	24,168,542	619,392	6,544,145
Saskatchewan	220,759,115	27,034,752	53,058,039	2,283,722	15,855,980
Alberta	98,132,888	19,706,228	42,904,639	1,106,547	5,619,413
Totals	358,039,484	68,398,674	120,131,220	4,009,661	28,019,538
(b) At Public and Semi-Public Terminals					
Manitoba	8,621	19,857	17,372	-	-
Saskatchewan	-	-	-	-	-
Alberta	542,283	107,691	42,102	-	2,739
Totals	550,904	127,548	59,474	-	2,739
(c) At Interior Private and Mill Elevators					
Manitoba	245,569	55,075	45,991	2,146	260,177
Saskatchewan	1,845,595	235,100	212,441	1,807	169,897
Alberta	1,660,173	395,322	135,628	37,276	510,848
Totals	3,751,337	685,497	394,060	41,229	940,922
(d) Loaded over Platforms					
Manitoba	3,429	21,881	1,702	-	1,765
Saskatchewan	52,769	-	8,837	1,600	15,262
Alberta	56,041	20,740	65,823	10,800	32,420
Totals	112,239	42,621	76,362	12,400	49,447
Total Producers' Marketings					
Manitoba	39,405,100	21,754,507	24,233,607	621,538	6,806,087
Saskatchewan	222,657,479	27,269,852	53,279,317	2,287,129	16,041,139
Alberta	100,391,385	20,229,981	43,148,192	1,154,623	6,165,420
Totals	362,453,964	69,254,340	120,661,116	4,063,290	29,012,646

Table G-3. Receipts and Shipments of Canadian Grain at Terminal Elevators, Crop Year 1956-57

	Wheat	Oats	Barley	Rye	Flaxseed
	bu.	bu.	bu.	bu.	bu.
Fort William - Port Arthur					
Receipts	195,262,256	49,603,513	77,675,031	5,888,463	22,570,376
Shipments	173,912,620	52,473,080	75,822,174	6,019,663	21,377,931
Vancouver - New Westminster					
Receipts	105,689,077	523,674	22,162,647	-	2,797,724
Shipments	103,891,341	1,746,446	22,969,989	-	2,408,095
Victoria					
Receipts	1,463,987	1,838	1,250	-	710,874
Shipments	1,201,035	30,160	1,360	-	704,475
Prince Rupert					
Receipts	-	-	8,048,192	-	-
Shipments	37,417	-	8,613,453	-	-
Churchill					
Receipts	16,160,117	-	-	-	-
Shipments	16,484,320	101,200	-	-	-
Transcona					
Receipts	343,043	34,395	61,822	2,231	16,006
Shipments	371,684	18,851	60,759	2,231	15,913
Calgary					
Receipts	506,835	3,013	1,128,183	28,125	300,309
Shipments	879,112	5,889	1,221,361	30,691	297,362
Edmonton					
Receipts	385,981	114,649	63,429	-	297,944
Shipments	424,112	124,872	61,061	-	297,533
Lethbridge					
Receipts	569,985	-	-	-	27,697
Shipments	1,045,121	-	375	-	27,681
Moose Jaw					
Receipts	1,171,686	-	1,967	-	3,218
Shipments	798,795	-	1,967	-	3,218
Saskatoon					
Receipts	1,413,976	43,287	-	-	-
Shipments	2,020,566	75,504	-	-	-
Total Receipts	322,966,943	50,324,369	109,142,521	5,918,819	26,724,148
Total Shipments	301,066,123	54,576,002	108,752,499	6,052,585	25,132,208

Table 6-4. Shipments of Foreign Grain from Canadian Elevators into Canadian Consumer Channels, Crop Year 1956-57.

From	United States Flaxseed bu.	United States Corn bu.	United States Soybeans bu.	United States Rice bu.	Iran Rice bu.
Eastern Elevators	47,040	6,223,301	1,714,801	113,657	48,148
Fort William - Port Arthur	-	-	-	-	-
Interior Terminals	-	-	-	-	-
Interior Private and Mill Elevators	-	1,059,697	-	-	-
Pacific Coast Elevators	-	-	-	-	-

Table G-5. Primary Receipts and Shipments at Eastern Elevators, Crop Year 1956-57.

	Receipts	Shipments
	bu.	bu.
Canadian Grain--		
Wheat	170,138,510	153,430,147
Oats	38,842,719	39,693,102
Barley	48,093,642	48,846,074
Rye	1,691,314	2,020,125
Flaxseed	21,378,233	21,006,474
Corn	2,510,755	2,976,734
Beans	2,263,806	2,212,832
Buckwheat	298,322	187,965
Peas	241,010	240,660
Rapeseed (lbs.)	82,094,660	81,541,810
Mixed Grain (lbs.)	282,766	-
Sample Grain (lbs.)	12,681,790	13,286,145
United States Grain--		
Wheat	-	137,384
Flaxseed	2,093,279	1,782,760
Corn	8,303,155	7,445,183
Soybeans	1,806,570	1,714,801
Rice	113,657	113,657
Other Foreign Grain--		
Iran Rice	48,148	48,148

Table G-6. Supply and Disposition of Canadian Grain in United States Positions, Crop Year 1956-57.

	Wheat	Oats	Barley	Rye	Flaxseed
	bu.	bu.	bu.	bu.	bu.
SUPPLY					
In Store and In Transit U. S. A.	770,887	820,675	-	73,723	-
Receipts direct from Canada	6,388,557	16,899,182	21,562,199	4,297,588	195,983
Total Supply	7,159,444	17,719,857	21,562,199	4,371,311	195,983
DISPOSITION					
Exported	480,137	-	-	-	195,983
Returned to Canada	729,054	-	-	-	-
Used Domestically	5,871,501	17,615,326	21,562,199	4,353,311	-
Total Disposition	7,080,692	17,615,326	21,562,199	4,353,311	195,983
In Store and In Transit, July 31, 1957.	78,752	104,531	-	18,000	-

Table G-7. Exports of Canadian Wheat, by Seaboard Sectors, by Months, Crop Year 1956-57.

	Via Canadian Pacific Ports	Via Canadian St. Lawrence- Atlantic Ports	Via Churchill	Via Fort William- Port Arthur Direct	Via United States Atlantic Ports	United States Imports ¹		Total All Wheat	Wheat Flour ²	Total Wheat and Wheat Flour
	bu.	bu.	bu.	bu.	bu.	For Domestic Use	Milling In Bond	bu.	bu.	bu.
1956										
August	10,457,624	9,265,882	6,383,640	-	-	222,657	-	26,329,803	3,434,137	29,763,940
September	7,139,734	8,632,846	8,704,023	-	-	86,272	59,490	24,622,365	2,781,128	27,403,493
October	8,200,568	11,320,183	1,162,657	-	-	221,947	-	20,905,355	3,359,384	24,264,739
November	8,244,519	12,332,770	-	-	-	874,536	-	21,451,825	3,196,380	24,648,205
December	9,478,220	7,070,050	-	-	480,137	763,141	70,971	17,862,519	2,907,296	20,769,815
1957										
January	9,427,980	5,003,423	-	-	-	486,757	-	14,918,160	3,343,186	18,261,346
February	8,043,622	3,894,696	-	-	-	114,812	-	12,053,130	2,796,915	14,850,045
March	7,888,192	5,846,866	-	-	-	168,321	-	13,903,379	2,776,353	16,679,732
April	7,071,193	5,309,207	-	-	-	295,718	-	12,676,118	3,055,258	15,731,376
May	9,232,341	10,261,922	-	-	-	371,925	858,581	20,724,769	2,316,619	23,041,388
June	8,464,153	13,578,776	-	-	-	734,393	60,676	22,837,998	1,848,816	24,686,814
July	10,471,065	9,019,344	-	-	-	416,938	64,366	19,971,713	2,682,934	22,654,647
Total Crop Year 1956-57	104,119,211	101,535,965	16,250,320	-	480,137	4,757,417	1,114,084	228,257,134	34,498,406	262,755,540
Total Crop Year 1955-56	98,322,316	150,556,005	12,818,845	18,667	227,233	6,676,014	562,395	269,181,475	39,999,990 ³	309,181,465
5-Year Average 1951-52 to 1955-56	99,893,747	136,362,144	10,442,143	96,836	1,624,552	12,751,713	3,439,257	264,610,392	46,894,367	311,504,759

¹ Compiled from returns of Canadian elevator licensees and shippers and advice from American grain correspondents.

² Canadian Customs returns converted to bushels - unadjusted for time lag.

³ Revised - adjusted to remove effect of time lag in reports made by the Customs.

Table G-8. Overseas Exports of Canadian Grain, by Seaboard Sectors, by Grades, Crop Year 1956-57.

Grades	Via Canadian Pacific Ports bu.	Via Canadian St. Lawrence- Atlantic Ports bu.	Via Churchill bu.	Via United States Atlantic Ports bu.	Total bu.
WHEAT					
1 Manitoba Northern	940,088	5,536,629	260,618	-	6,737,335
2 Manitoba Northern	30,800,376	37,102,679	13,532,788	-	81,435,843
3 Manitoba Northern	36,894,595	22,742,185	1,700,533	480,137	61,817,450
4 Manitoba Northern	7,472,471	4,872,057	264,165	-	12,608,693
No. 5	24,047,231	12,309,496	65,399	-	36,422,126
No. 6	1,466,070	26,966	-	-	1,493,036
2 C. W. Garnet	-	1,991	-	-	1,991
3 C. W. Garnet	259,840	-	-	-	259,840
1 Alberta Red Winter	222,477	-	-	-	222,477
2 Alberta Winter	777,925	-	-	-	777,925
3 Alberta Winter	234,845	-	-	-	234,845
Other Western	1,003,293	6,371,546	426,817	-	7,801,656
Eastern	-	508,413	-	-	508,413
2 C. W. Amber Durum	-	848,381	-	-	848,381
3 C. W. Amber Durum	-	1,895,694	-	-	1,895,694
Extra 4 C. W. Amber Durum	-	3,096,383	-	-	3,096,383
4 C. W. Amber Durum	-	6,083,020	-	-	6,083,020
Others Durum	-	140,525	-	-	140,525
Totals	104,119,211	101,535,965	16,250,320	480,137	222,385,633
OATS					
2 C. W.	883	-	-	-	883
Extra 3 C. W.	-	16,487	-	-	16,487
3 C. W.	7,059	164,733	-	-	171,792
Extra 1 Feed	5,294	-	-	-	5,294
1 Feed	34,706	12,035	-	-	46,741
Mixed Feed	479,953	-	-	-	479,953
Eastern	-	3,295	-	-	3,295
Totals	527,895	196,550	-	-	724,445
BARLEY					
3 C. W. Six-Row	1,378,875	435,270	-	-	1,814,145
3 C. W. Two-Row	9,504,287	1,265,989	-	-	10,770,276
1 Feed	14,913,499	1,186,494	-	-	16,099,993
Extra 2 Feed	4,189,219	1,406,684	-	-	5,595,903
2 Feed	1,184,168	19,753,417	-	-	20,937,585
Other Western	-	100,810	-	-	100,810
Totals	31,170,048	24,148,664	-	-	55,318,712

Table G-8. Overseas Exports of Canadian Grain, by Seaboard Sectors, by Grades, Crop Year 1956-57. *Concluded.*

Grades	Via Canadian Pacific Ports bu.	Via Canadian St. Lawrence-Atlantic Ports bu.	Via Churchill bu.	Via United States Atlantic Ports bu.	Total bu.
RYE					
2 C. W.	-	265,538	-	-	265,538
3 C. W.	-	828,671	-	-	828,671
Totals	-	1,094,209	-	-	1,094,209
FLAXSEED					
1 C.W.	2,009,010	14,080,045	-	195,983	16,285,038
2 C.W.	1,141,406	4,156,024	-	-	5,297,430
Totals	3,150,416	18,236,069	-	195,983	21,582,468

Table G-9. Overseas Exports of Canadian Grain, by Ports, Crop Year 1956-57.

Loaded at	Wheat (All varieties) bu.	Oats bu.	Barley bu.	Rye bu.	Flaxseed bu.	Total All Grains. bu.
Vancouver-New Westminster	102,882,125	527,895	22,556,595	-	2,438,825	128,405,440
Victoria	1,199,669	-	-	-	711,591	1,911,260
Prince Rupert	37,417	-	8,613,453	-	-	8,650,870
Montreal	52,869,592	196,550	17,614,733	269,767	10,668,133	81,618,775
Sorel	8,075,293	-	4,895,900	-	165,075	13,136,268
Three Rivers	10,748,034	-	853,520	-	-	11,601,554
Quebec	11,036,301	-	-	-	-	11,036,301
Saint John	1,077,066	-	-	-	35,993	1,113,059
West Saint John	8,862,006	-	784,511	5,946	4,719,318	14,371,781
Halifax	8,867,673	-	-	818,496	2,647,550	12,333,719
Churchill	16,250,320	-	-	-	-	16,250,320
Totals - Canadian Ports	221,905,496	724,445	55,318,712	1,094,209	21,386,485	300,429,347
Baltimore	480,137	-	-	-	-	480,137
Boston	-	-	-	-	167,814	167,814
New York	-	-	-	-	28,169	28,169
Totals - U. S. A. Ports	480,137	-	-	-	195,983	676,120
Totals to Overseas	222,385,633	724,445	55,318,712	1,094,209	21,582,468	301,105,467
Wheat Flour ¹	34,498,406	-	-	-	-	34,498,406
Rolled Oats and Oatmeal ¹	-	341,528	-	-	-	341,528
U.S.A. Imports ²	5,871,501	17,615,326	21,562,199	4,353,311	-	49,402,337
Grand Totals	262,755,540	18,681,299	76,880,911	5,447,520	21,582,468	385,347,738

¹ Canadian Customs Returns - converted to bushels.

² Compiled from returns of Canadian Elevator licensees and shippers and advice from American grain correspondents.

Table G-10. Tough and Damp Grain Dried, by Storage Position, Crop Year 1956-57.

	Artificial Drying			Natural Drying	Total
	Tough	Damp	Tough and Damp		
	bu.	bu.	bu.	bu.	bu.
LAKEHEAD					
Wheat	959	10,292	11,251	3,715,320	3,726,571
Durum Wheat	-	4,064	4,064	91,325	95,389
Oats	-	1,992	1,992	349,916	351,908
Barley	-	1,945	1,945	1,379,403	1,381,348
Rye	391	-	391	106,663	107,054
Flaxseed	-	6,806	6,806	120,090	126,896
Totals	1,350	25,099	26,449	5,762,717	5,789,166
PACIFIC COAST					
Wheat	216,239	-	216,239	4,426,298	4,642,537
Oats	-	-	-	14,397	14,397
Barley	415,783	-	415,783	1,872,577	2,288,360
Rye	-	-	-	-	-
Flaxseed	-	-	-	41,911	41,911
Totals	632,022	-	632,022	6,355,183	6,987,205
INTERIOR					
Wheat	-	82	82	70,491	70,573
Flaxseed	10,617	1,843	12,460	-	12,460
Totals	10,617	1,925	12,542	70,491	83,033
CHURCHILL					
Wheat	-	-	-	13,898	13,898
Totals, All Positions	643,989	27,024	671,013	12,202,289	12,873,302

Table G-11. Weighted Average Lake Freight Rates on Canadian Grain from Fort William-Port Arthur, Season of Navigation, 1957

Port of Discharge	Wheat	Oats	Barley	Rye	Flaxseed
	(cents per bushel)				
Georgian Bay Ports, Goderich, Sarnia and Walkerville	5.530	5.0	5.25	5.5	-
Port Colborne	7.532	6.75	7.25	7.5	-
Toronto	8.0	7.25	7.5	-	8.515
Kingston	9.556	8.0	8.25	-	-
Prescott	9.0	8.25	8.5	9.0	-
Montreal (Direct)	16.0	13.0	15.25	16.0	17.0
Montreal via Bay Ports	16.0	13.0	15.25	-	-
Montreal via Port Colborne	16.0	13.0	15.25	16.0	17.0
Montreal via Toronto	16.0	-	15.25	16.0	17.0
Montreal via Kingston	16.0	13.0	15.25	16.0	17.0
Montreal via Prescott	16.0	13.0	15.25	16.0	17.0
Sorel (Direct)	16.0	13.0	15.25	-	-
Sorel via Bay Ports	16.0	13.0	15.25	-	-
Sorel via Port Colborne	16.0	13.0	15.25	-	17.0
Sorel via Prescott	16.0	13.0	15.25	-	17.0
Three Rivers (Direct)	16.0	-	-	-	-
Three Rivers via Bay Ports	16.0	-	-	-	-
Three Rivers via Port Colborne	16.0	-	-	-	-
Three Rivers via Toronto	16.0	-	-	-	-
Three Rivers via Kingston	16.0	-	-	-	-
Quebec (Direct)	16.0	13.0	15.25	16.0	-
Quebec via Port Colborne	-	13.0	15.25	-	-
Quebec via Prescott	16.0	13.0	15.25	-	-
Buffalo	8.072	6.881	7.621	7.998	-
Chicago	8.377	6.689	7.5	7.955	-
Detroit	-	-	8.622	-	-
Duluth-Superior	6.0	-	5.5	-	-
Huron	9.0	6.331	-	-	-
Manitowac	-	-	7.556	-	-
Milwaukee	-	6.5	7.538	-	-
Toledo	-	5.870	-	-	-

NOTE--Rates originally quoted in United States Funds have been converted to Canadian currency at the prevailing rates of exchange.

Table G-12. Overages and Shortages Disclosed by Weighovers of Grain Stored in PUBLIC TERMINAL ELEVATORS, Crop Year 1956-57

NOTE:—The figures shown in this table represent differences between outstanding registered warehouse receipts and quantities of grain disclosed at weighover

Date of Weighover	Licensee	Wheat		Oats		Mixed Feed Oats		Barley		Rye		Flaxseed		Canadian Corn		U. S. A. Corn		Rapeseed		Mixed, and Sample Grain	
		Over- age bu.	Short- age bu.	Over- age bu.	Short- age bu.	Over- age bu.	Short- age bu.	Over- age bu.	Short- age bu.	Over- age bu.	Short- age bu.	Over- age bu.	Short- age bu.	Over- age bu.	Short- age bu.	Over- age bu.	Short- age bu.	Over- age lbs.	Short- age lbs.	Over- age lbs.	Short- age lbs.
1957	Canadian Government Elevators																				
June 17-28	Calgary, Alta.	-	2,038.3	-	46.4	-	-	262.6	-	28.0	-	134.5	-	-	-	-	-	-	-	-	-
May 13-17	Edmonton, Alta.	-	8,783.3	792.5	-	100.0	-	1,059.7	-	-	-	857.7	-	-	35.0	-	34.0	-	-	-	-
May 6-10	Lethbridge, Alta.	951.9	-	-	-	105.6	-	-	113.7	-	-	19.1	-	-	-	-	-	-	-	-	-
June 10- July 5	Saskatoon, Sask.	1,419.5	-	-	-	22,492.9	-	422.9	-	-	-	-	41.2	-	-	-	-	-	840	-	-
	TOTALS	2,371.4	10,821.6	792.5	46.4	22,608.5	-	1,755.2	113.7	28.0	-	1,011.3	41.2	-	35.0	-	34.0	-	840	-	-
	Net Totals - Overages	-	-	746.1	-	22,608.5	-	1,641.5	-	28.0	-	970.1	-	-	-	-	-	-	-	-	-
	Shortages	8,450.2	-	-	-	-	-	-	-	-	-	-	-	35.0	-	34.0	-	840	-	-	-

Table G-13. Excesses and Deficiencies in Specified Grades of Wheat Disclosed by Weighovers of Grain Stored in PUBLIC TERMINAL Elevators, Crop Year 1956-57

Date of Weighover	Location	EXCESS						DEFICIENCY					
		1 Hard bu.	1 Northern bu.	2 Northern bu.	3 Northern bu.	1 C. W. Garnet bu.	2 C. W. Garnet bu.	1 Hard bu.	1 Northern bu.	2 Northern bu.	3 Northern bu.	1 C. W. Garnet bu.	2 C. W. Garnet bu.
1957	Canadian Government Elevators												
June 17-28	Calgary, Alta.	-	-	-	-	-	-	-	85.8	1,465.3	750.3	-	45.9
May 15-17	Edmonton, Alta.	-	-	-	-	-	-	-	-	58.2	6,900.1	-	435.7
May 4-10	Lethbridge, Alta.	-	-	-	788.8	-	-	-	20.2	308.5	-	-	-
June 10-July 5	Saskatoon, Sask.	-	-	23,482.8	-	-	-	-	22.3	-	30,898.6	-	-

Table G-14. Excesses and Deficiencies in Specified Grades of Wheat Disclosed by Weighovers of Grain Stored in SEMI-PUBLIC TERMINAL Elevators, Crop Year 1956-57

Date of Weighover	Licensee	EXCESS						DEFICIENCY					
		1 Hard bu.	1 Northern bu.	2 Northern bu.	3 Northern bu.	1 C. W. Garnet bu.	2 C. W. Garnet bu.	1 Hard bu.	1 Northern bu.	2 Northern bu.	3 Northern bu.	1 C. W. Garnet bu.	2 C. W. Garnet bu.
FORT WILLIAM - PORT ARTHUR													
Dec. 17-20, 1956	Canadian Consolidated Grain Co. Ltd. Empire	-	-	-	-	-	-	-	-	1,488.9	39.1	-	-
Jan. 8-18, 1957	Eastern Terminal Elevator Co. Ltd.	-	-	12,293.3	-	-	-	-	13,723.9	-	24,273.6	-	-
Dec. 14-18, 1956	Fort William Elevator Co. Ltd. Elevator "E"	-	-	-	-	-	-	-	-	-	-	-	-
Manitoba Pool Elevators													
Aug. 7-9, 1956	Elevator No. 1	-	-	-	-	-	-	-	4.8	843.3	675.9	-	-
Aug. 10-15, 1956	Elevator No. 2	-	-	-	-	-	-	-	174.9	1,704.8	762.3	-	-
Aug. 16-24, 1956	Elevator No. 9	-	-	-	-	-	-	-	124.6	2,610.9	1,409.4	-	-
Dec. 13-17, 1956	McCabe Grain Co. Ltd.	-	-	-	-	-	-	-	284.7	1,719.9	4,822.3	18.5	17.6
Dec. 17-26, 1956	National Grain Terminal	-	-	-	-	-	-	-	696.5	10,629.3	34,739.0	-	-
Dec. 11-17, 1956	Ogilvie Flour Mills Co. Ltd.	-	-	-	-	-	-	-	210.3	3,057.1	106.8	-	-
Dec. 26, 1956- Jan. 4, 1957	Saskatchewan Wheat Pool Elevator No. 7	-	-	-	-	-	-	-	2,513.6	45,925.8	37,063.3	-	3.7
Dec. 12-22, 1956	Searle Grain Co. Ltd.	-	-	-	-	-	-	-	660.4	10,890.6	18,742.7	-	3.7
July 15-18, 1957	Superior Elevator Co. Ltd.	-	-	2,565.5	-	-	-	-	36.1	-	5,154.2	-	-
Jan. 9-Feb. 15, 1957	Westland Elevators Ltd.	-	-	-	-	-	-	-	5,997.7	101,268.4	41,679.1	-	3.7
VANCOUVER - NEW WESTMINSTER													
Jan. 12-19, 1957	Alberta Wheat Pool	-	-	-	-	-	-	-	1.0	15,528.0	26,826.3	-	10.2
May 3-10, 1957	Burrard Terminals Ltd.	-	31.2	-	-	-	-	-	-	6,342.7	7,346.4	-	-
Sept. 7-12, 1956	Cargill Grain Co. Ltd.	-	-	8,136.3	1,706.4	-	-	-	12,314.2	-	-	-	-
Jan. 11-18, 1957	Pacific Elevators Ltd. Elevator No. 1	-	-	-	-	-	-	-	3,630.3	62,529.5	49,475.5	-	452.5
Aug. 13-16, 1956	James Richardson & Sons Ltd. Elevator No. 4 (N.H.B.)	-	-	-	-	-	-	-	14.2	210.1	191.6	-	3.7
Oct. 9-15, 1956	Searle Grain Co. Ltd.	-	-	112.4	-	-	-	-	131.5	-	948.8	-	-

Table G-15 Excesses and Deficiencies in Specified Grades of Wheat disclosed by Weighovers of Grain Stored in PRIVATE TERMINAL Elevators, Crop Year 1956-57

Grade of Wheat	Excess bu.	Deficiency bu.
1 Hard	-	-
1 Northern	-	-
2 Northern	-	-
3 Northern	-	-
1 C. W. Garnet	-	-
2 C. W. Garnet	-	-

No wheat of the above grades was handled or in store in the following elevators:

Date of Weighover	Elevator Company	Location
July 29th, 1957	Canada Malting Co. Ltd.	Calgary, Alberta
December 27th, 1956	Canada Malting Co. Ltd.	Winnipeg, Manitoba
December 27th, 1956	Canada Malting Co. Ltd.	Port Arthur, Ontario
December 21st, 1956	Dominion Malting Co. Ltd.	Transcona, Manitoba
December 21st, 1956	National Grain Feed Mill	Fort William, Ontario

Table G-16. Overages and Shortages Disclosed by Weighovers of Canada Western and Foreign Grain Stored in Eastern Elevators, Crop Year 1956-57

Date of Weighover	Licensee	Kind of Grain	Overage bu.	Shortage bu.
1957				
Mar. 21-28	Collingwood Collingwood Terminals Ltd.	Canada Western Wheat	-	5,085.0
		Canada Western Oats	-	5,399.1
		Canada Western Barley	-	181.1
		Canada Western Rye	-	205.6
		Canada Western Peas	-	1.9
		Canada Western Screenings	• 16,421	-
Mar. 12-19	Goderich Upper Lakes and St. Lawrence Transportation Co. Ltd.	Canada Western Wheat	-	1,504.3
		Canada Western Oats	-	3,182.5
		Canada Western Barley	-	1,557.4
		Canada Western Screenings	-	• 35,598
		U. S. A. Corn	-	7.8
Jan. 29- Feb. 11	Kingston Canada Steamship Lines Ltd.	Canada Western Wheat	-	9,392.5
		Canada Western Oats	-	305.9
		Canada Western Barley	-	2,523.8
		Canada Western Rye	-	699.7
		Canada Western Flaxseed	-	1,457.2
		U. S. A. Corn	-	406.6
Sept. 27, 1956	Lakefield Lakefield Elevator Co.	Canada Western Wheat	-	4,602.8
Mar. 8-27	Midland Canada Steamship Lines Ltd.	Canada Western Wheat	-	4,353.1
		Canada Western Oats	-	64.5
		Canada Western Barley	-	2.0
		Canada Western Rye	-	89.7
Feb. 21- Mar. 7	Canadian National Railways	Canada Western Wheat	-	15,741.0
		Canada Western Barley	-	18.7
		Canada Western Rye	-	183.7
Mar. 19-29	Midland-Simcoe Elevator Co. Ltd.	Canada Western Wheat	-	4,869.3
		Canada Western Oats	-	579.3
		Canada Western Barley	-	597.4
Mar. 28- April 2	Renown Investments Ltd.	Canada Western Wheat	-	1,353.5
		Canada Western Oats	-	67.9
		Canada Western Rye	-	3.0

Table G-16. Overages and Shortages Disclosed by Weighovers of Canada Western and Foreign Grain Stored in Eastern Elevators, Crop Year 1956-57--Continued

Date of Weighover	Licensee	Kind of Grain	Overage	Shortage
			bu.	bu.
1957				
Mar. 11-15	Montreal Dominion Elevator Ltd.	Canada Western Wheat Canada Western Oats Canada Western Barley Canada Western Sample Grain Canada Western Screenings U. S. A. Corn	- - - - - -	2,426.5 1,274.6 849.0 *3,169 *22,398 153.2
Mar. 18- April 5	Owen Sound Great Lakes Elevator Co. Ltd.	Canada Western Wheat Canada Western Oats Canada Western Barley Canada Western Screenings	- - - -	7,451.2 1,924.5 851.3 *33,464
Mar. 11-15	Port Colborne Maple Leaf Milling Co. Ltd.	Canada Western Wheat Canada Western Oats Canada Western Barley Canada Western Rye Canada Western Flaxseed Canada Western Sample Grain Canada Western Screenings U. S. A. Corn	- - - - - - -	7,096.9 142.3 1,689.3 252.4 18.7 * 775 *1,123 22.3
April 1-9	National Harbours Board	Canada Western Wheat Canada Western Oats Canada Western Barley Canada Western Rye Canada Western Flaxseed Canada Western Buckwheat U. S. A. Soybeans	- - - - - - -	13,182.5 1,325.3 12,605.1 1,297.7 2,117.0 15.6 557.3
April 3-16	Port McNicoll Canadian Pacific Railway Co.	Canada Western Wheat Canada Western Oats Canada Western Barley	- - -	9,037.5 11.1 196.1
Feb. 26- Mar. 8	Prescott National Harbours Board	Canada Western Wheat Canada Western Oats Canada Western Barley Canada Western Rye Canada Western Flaxseed Canada Western Screenings U. S. A. Flaxseed U. S. A. Corn	2,300.6 1,112.3 - - - - - -	- - 2,724.1 1,109.0 1,970.5 *304 128.0 5,083.8

Table G-16. Overages and Shortages Disclosed by Weighovers of Canada Western and Foreign Grain Stored in Eastern Elevators, Crop Year 1956-57--Continued

Date of Weighover	Licensee	Kind of Grain	Overage bu.	Shortage bu.
1957				
Feb. 13-22	Quebec National Harbours Board	Canada Western Wheat	-	11,124.2
		Canada Western Oats	-	2,620.3
		Canada Western Barley	-	2,496.2
		Canada Western Rye	-	49.9
		Canada Western Sample Grain	-	*50
		Canada Western Screenings	-	*4,350
Feb. 25- Mar. 7	Sorel North American Elevators Ltd.	Canada Western Wheat	-	7,250.7
		Canada Western Oats	-	638.7
		Canada Western Barley	-	4,047.1
		Canada Western Rye	-	511.3
		Canada Western Flaxseed	-	147.7
Feb. 26- Mar. 15	Toronto Toronto Elevators Ltd.	Canada Western Wheat	-	6,571.9
		Canada Western Oats	-	2,889.8
		Canada Western Barley	-	2,936.4
		Canada Western Rye	-	95.7
		Canada Western Flaxseed	-	2,997.6
		Canada Western Sample Grain	-	*4,459
		Canada Western Screenings	-	*3,872
		U. S. A. Corn	95.7	-
		U. S. A. Soybeans	-	951.4
April 1-11	Walkerville Hiram Walker & Sons Grain Corp. Ltd.	Canada Western Wheat	-	3,722.2
		Canada Western Oats	-	75.0
		Canada Western Barley	-	41.2
		Canada Western Rye	-	145.3
		Screenings, Origin Unknown	-	*1,361
		U. S. A. Corn	-	129.1
April 5-9	St. John Canadian National Railway Co.	Canada Western Wheat	-	768.1
		Canada Western Flaxseed	-	22.5
		Canada Western Soybeans	-	11.9
		Canada Western Rapeseed	-	*527
April 15-18	West St. John Canadian Pacific Railway Co. Elevator "B"	Canada Western Wheat	-	2,210.0
		Canada Western Barley	-	72.5
		Canada Western Flaxseed	-	747.4
		Canada Western Screenings	-	*980
		Canada Western Peas	-	7.1
		Canada Western Rapeseed	-	*13,080

Table G-16. Overages and Shortages Disclosed by Weighovers of Canada Western and Foreign Grain Stored in Eastern Elevators, Crop Year 1956-57--Continued

Date of Weighover	Licensee	Kind of Grain	Overage	Shortage
1957			bu.	bu.
April 11-12	Canadian Pacific Railway Co., Elevator "H"	Canada Western Wheat	-	2,144.8
		Canada Western Barley	-	433.3
		Canada Western Rye	-	3.7
		Canada Western Flaxseed	-	1,016.0
		Canada Western Screenings	-	*1,724
		Canada Western Peas	-	11.5
		Canada Western Rapeseed	-	*13,258

* Pounds.

APPENDIX H

THE GRAIN RESEARCH LABORATORY

J. Ansel Anderson, Chief Chemist

SECTION 22 OF THE CANADA GRAIN ACT REQUIRES THAT "THE BOARD SHALL MAINTAIN AN EFFICIENT AND ADEQUATELY EQUIPPED LABORATORY FOR RESEARCH WORK IN RELATION TO GRAIN".

The following summary of the Laboratory's work for 1957 deals with the quality of Canadian grain marketed in the 1956-57 crop year, the quality of 1957 crops, research and other activities. In accordance with past practice, a separate annual report will be published by the Laboratory to put on record data on the quality of Canadian grain and progress made in research.

QUALITY OF GRAIN MARKETED IN 1956-57

Studies of the qualities of spring wheat, durum wheat, barley, oil seeds, and other cereal grains, at various stages of marketing, were continued throughout the 1956-57 crop year. Although a considerable volume of wheat carried over in country elevators and on farms was moved during the crop year, average quality of grain moved to terminal elevators reflected the characteristics of the 1956 crop; a cool wet season increased bushel weight but kept protein content well below average for the fifth successive year.

Spring wheat marketed in 1956-57 was high in bushel weight and flour yield. Protein content and baking strength were below the long-term averages, but levels for the Northern grades were very similar to those of the previous crop year. Carrying power for weaker wheats was good considering the protein level. The large durum wheat crop was predominantly No. 4 C.W. and the macaroni-making quality of this grade was comparatively good; the new commercial grade, Extra No. 4 C.W., continued to find wide acceptance in European markets. Malting quality of barley was good and similar to that of the previous crop year.

The record flax crop was high in oil content and iodine value and was classed as a crop of excellent quality. Western Canada rapeseed became a large enough crop to warrant a comprehensive survey; average oil content was 45%, which represents a high level for this crop.

ESTIMATED QUALITY OF 1957 CROPS

The weather at harvest time was not favourable and much grain lost grade in the swath. It is estimated that the bulk of the wheat crop (348 million bushels, including 44 million of durum) will grade Nos. 2, 3 and 4 Northern, with No. 3 Northern as the largest grade. As a result of the relatively dry summer, the 1957 wheat crop has a protein content of 14.1%, and baking strength and carrying power for weaker wheats are excellent. The new crop thus has the high quality long associated with the "Manitobas". Bushel weight is not so high as in recent years, but the Northern grades mill very satisfactorily and give high yields of flour of good color and low ash. Doughs handle very well, and baking absorption and gassing power are both at satisfactory levels.

Despite a 56% increase in seeded acreage, the durum wheat crop is only about 5 million bushels greater than in 1956, and No. 3 C.W. is expected to be the largest grade. The crop will be higher in protein than for several years and bushel weight a little lower. As the top three grades contain only high quality varieties, they again produce macaroni of excellent color; lipoxidase activity is also low for each of these grades. Extra No. 4 C.W. is expected to be somewhat better in macaroni color this year, and No. 4 C.W. will probably be similar to last year's grade.

The new barley crop is estimated to be 216 million bushels, and over 60% is expected to enter the malting grades. Malting quality is about average, but percentages of plump barley are high in the top grades. In line with the higher nitrogen content, malt extract yields are lower than for last year's samples.

Enzymic activity is high for the malting grades this year.

The flax crop is estimated to be 23 million bushels and is below average in grade. Oil content and iodine value are both lower than in 1956, but protein content is higher. The second survey of rapeseed shows that oil content is 41.6% and that protein content is 42.5%; the former is lower and the latter higher than in 1956.

BULLETINS AND MAPS

Preliminary information on the quality of different grades of 1957 crops of spring wheat, durum wheat, barley and oil seeds, was published in two protein maps and four crop bulletins (two on wheat, one on barley, and one on flax and rapeseed). Information contained in these bulletins was also presented at two meetings of the Committee on Western Grain Standards. These publications were sent by the Laboratory to domestic and foreign buyers of Canadian grain, and separate distribution of some of them was made by the Canadian Wheat Board. The bulletin on the quality of the wheat crop was also distributed to Canadian Trade Commissioners throughout the world by the Grain Division, Department of Trade and Commerce, Ottawa. Press releases preceded publication of the maps and bulletins.

The quarterly bulletins on Canadian wheat cargoes, started two years ago, were continued throughout 1957. The four issues were distributed mainly by Canadian Trade Commissioners who received their supplies direct by airmail. With the first quarter of the 1957-58 crop year the Laboratory began a second series of quarterly bulletins that deals with the quality of durum wheat cargoes exported from Canada. Comprehensive quality data for average samples of different grades, and data for moisture content, bushel weight and protein content of individual cargoes, are presented and discussed in much the same way as in the spring wheat cargo bulletins.

SERVICE TO THE INSPECTION BRANCH

The Laboratory continued to work in close co-operation with the Inspection Branch to provide information and service required in settling grading problems. Studies were made of the quality of tentative standard and standard export samples of different grains prepared by the Chief Inspector for approval by the Committee on Western Grain Standards. From time to time special tests of current crops were made to provide information that would assist in grading. For example, scab damage in White Winter Wheat was examined and found to be a great deal more severe than the appearance of the kernels would indicate. Supervision of moisture testing and of equipment in the Board's Inspection offices was continued throughout the year, and C.A.E. electrical moisture meters were installed in 10 of the offices. Increased use is being made of these moisture meters to segregate samples that are well below the maximum for straight grade and need not be tested by the longer Brown-Duval method. Studies aimed at maintenance of uniformity in protein contents of export cargoes of top grades of wheat have been continued.

VARIETY TESTING

As in previous years, the Laboratory took a major part in studies, sponsored by the Associate Committee on Grain Research, of the quality of spring wheat, durum wheat and malting barley varieties developed by Canadian plant breeders. The 1957 studies showed that some of the new rust-resistant wheat varieties now being developed are promising in quality. Final tests of Traill barley showed that it does not have "fair malting quality" and that it cannot be distinguished in kernel characteristics from the unlicensed variety Kindred which is still being grown on a small acreage in Manitoba. Neither Traill nor Kindred will be graded higher than No. 1 Feed after August 1, 1958. Small-scale prediction tests developed by the Laboratory for durum wheat and malting barley are now being used to advantage in providing plant breeders with preliminary information on the quality of early generation hybrids. Progress in basic

research has made it feasible to re-examine the possibility of developing a more comprehensive set of small-scale prediction tests for quality in spring wheats; these studies are being undertaken in co-operation with the Canada Department of Agriculture.

SERVICE TO OTHER ORGANIZATIONS

Laboratory services and technical advice to the Canadian Wheat Board, to the Grain Division of the Department of Trade and Commerce, to Commercial Counsellors and Trade Commissioners in importing countries, and to other government agencies, continue to expand steadily. This work relates mainly to promotion of sales of Canadian wheat. Inquiries relating to the quality of Canadian grains in general, of specific grades, and of individual cargoes, were received from many sources. Considerable time and numerous comparative studies of the qualities of various samples were required to deal adequately with this section of the Laboratory's service work. Visits to foreign countries by members of the Laboratory's staff, mentioned later in this report, also play an important role in dealing with these matters.

Close liaison has continued with the Brewing and Malting Barley Research Institute, Winnipeg, and with the Northwest Crop Improvement Association, Minneapolis. The Laboratory has continued to carry its share of the work of the American Association of Cereal Chemists, and is collaborating with other cereal chemists throughout the world in the formation of an International Association for Cereal Chemistry.

RESEARCH

Like other comparable institutions, the Grain Research Laboratory endeavours to maintain a balanced program of short, intermediate and long-term

research projects. On the one hand, the short-term projects represent mainly applied research seeking such prompt solutions to immediate practical problems as can be obtained in the light of existing knowledge; on the other hand, the long-term projects represent basic research designed to add to existing knowledge on fundamental biochemical principles relating to quality in various cereal grains.

In applied research on wheat, priority is being given to development of a more effective group of tests for evaluating breadmaking quality. A wide range of laboratory milling tests, baking tests, dough and gluten tests, and analytical procedures has been developed throughout the world. Each importing country tends to use its own procedures and modifications in examining Canadian wheat. The Board's Laboratory must be familiar with all such tests and should be able to reproduce them. At present, a number of the available tests, and certain modifications of them developed in this Laboratory, are being applied to a wide variety of different types of wheat with the object of re-examining the possibilities for selecting better groups of tests for use in the Laboratory's service studies. The development of suitable laboratory milling procedures continues to present special problems. Moreover, no single baking test is wholly adequate for any given purpose, and the development of a limited battery of baking tests designed to provide required information effectively, is no small task. A number of other types of tests for quality have proved useful and are advocated by various laboratories, but these cannot replace milling and baking. Since the Laboratory is testing new varieties, grade averages, individual samples of cargoes of Canadian wheat, and a wide range of competing wheats, a very comprehensive set of methods is required for routine work.

Applied research on the quality of stored flour is continuing, and a constant check is being kept on the quality of wheat in store in western Canada.

In basic research on wheat, attention has been focused on the role of flour lipids in relation to the improving action of bromate. Another problem of fundamental importance in dough chemistry is the part played by the sulfhydryl group. The new reagent N-ethylmaleimide holds promise for work on this problem, and a preliminary kinetic investigation of its reaction with cysteine has been completed. Studies are also being made in application of the technique of amperometric titration to the determination of the sulfhydryl group. Active research is continuing in the study of the physical properties of dough in relation to quality.

In barley research, the new malting equipment has been thoroughly tested and is now in operation. This equipment is designed primarily for final testing of the quality of new varieties of barley. It is also being used for investigating certain biochemical changes that occur in producing malt from barley. Previous studies indicated that there is a relation between cytolytic activity and malting quality of Canadian barley varieties, and this work has been extended to include examination of the non-starch polysaccharide (gum) components of barley varieties as these are substrates for cytolytic enzymes. Changes in the polysaccharide components during malting are also being followed. As there are indications that the cytolytic enzyme system is a mixture of several enzymes, studies on the characterization of types of enzyme activity are being made.

STAFF AND FACILITIES

The first award of the National Research Council Postdoctorate Fellowship, tenable in the Board's Laboratory, was made to Professor Hiroshi Matsumoto of Osaka Women's University. Professor Matsumoto arrived in August and will spend a year working with Dr. Hlynka on the role of the sulfhydryl group.

Dr. W. Bushuk was awarded a National Research Council Overseas Fellowship and one of the two Rutherford Memorial Fellowships offered each year by the

Royal Society of Canada. He has been granted leave of absence and will spend a year with Professor H. Benoit at the Centre des Recherches sur les Macromolécules at Strasbourg. Dr. M. H. Birnboim is still on leave for studies towards the degree of Ph.D. at the University of Wisconsin.

Good progress is being made with the expansion of the laboratory recommended in the Annual Report of the Board for 1956. Two chemists, Mr. R. R. Matsuo and Miss M. E. McMullan, joined the professional staff, and five additions were made to the subprofessional staff during the year.

An additional 5,000 sq.ft. of space has been obtained on the ground floor adjoining existing laboratories. This will permit consolidation of all routine studies and services on the ground floor, leaving the eighth floor laboratories for applied and basic research. Provision is being made on the ground floor for doubling the size of the milling and baking sections, for a section to house the malting equipment and associated analyses, and for general analytical laboratory. The workshop, darkroom, drafting and statistical services, will be moved to the ground floor, and larger quarters will be provided for the sample room, library, and general office. By the end of the year, the new analytical laboratory, sample room and workshop, were occupied. Remaining reconstruction should be completed within the next six to eight months.

OVERSEAS VISITS AND VISITORS

During the year, three members of the staff went abroad on official visits. Dr. G. N. Irvine, with Mr. A. W. Alcock of the Maple Leaf Milling Company, undertook a technical mission to Japan to study the cereal processing industries and related research. Dr. Irvine also visited Hong Kong and Karachi en route to Europe where he spent several weeks, on behalf of the Canadian Wheat Board, on investigations relating to durum wheat in Italy, Germany, France, Netherlands and Switzerland.

Dr. H. O. S. Meredith, who was on furlough leave in the United Kingdom, accepted an invitation to present a paper at the European Brewery Convention Congress in Copenhagen, and subsequently visited centres of barley research in Denmark, Sweden, Holland, Germany, France, Ireland and the United Kingdom.

Dr. J. A. Anderson was in France, as a representative of the Department of Trade and Commerce, and subsequently made additional visits in Belgium, Netherlands, Germany and the United Kingdom.

The Laboratory was especially pleased to welcome four well known cereal chemists from Europe: Ing. E. Mass of Belgium, Dr. G. L. Bertram of the Netherlands, Dr. S. Wagner of Switzerland, and Dr. W. Schäfer of Germany.

Two missions from the United Kingdom, two from Turkey and one each from Poland, Pakistan, Burma, the Soviet Union and Germany, visited the Laboratory. Other overseas visitors came from Australia, Austria, France, Greece, Ireland, Japan, South Africa and Switzerland. Canadian Commercial Counsellors or Trade Commissioners from Bogota, Belgium, Germany, Philippines and Portugal, also visited the Laboratory during 1957.

APPENDIX I

CANADIAN GOVERNMENT ELEVATORS

A. E. Jacobson, General Manager

IN ACCORDANCE WITH THE PROVISIONS OF SECTION 166 OF THE CANADA GRAIN ACT AND ORDER-IN-COUNCIL P.C. 1372 OF AUGUST 19, 1925, THE BOARD MANAGES AND OPERATES FIVE INTERIOR TERMINAL ELEVATORS AT MOOSE JAW, SASKATOON, CALGARY, EDMONTON AND LETHBRIDGE, AND ONE TERMINAL ELEVATOR AT PRINCE RUPERT, AND LEASES ONE TERMINAL ELEVATOR AT FORT ARTHUR.

In the 1956-57 crop year the interior elevators were operated under Public Terminal Elevator Licence. The Prince Rupert elevator was operated under a Semi-Public Terminal Elevator Licence and the Fort Arthur elevator continued under lease to McCabe Grain Company Limited.

HANDLINGS

Receipts at 17.0 million bushels in the 1956-57 crop year were 36 per cent higher than the previous year while shipments at 18.7 million bushels were 31 per cent higher. Shipments were 1.7 million bushels higher than receipts, which is reflected in lower stocks in store at the end of the crop year. Receipts of wheat and barley at 13.2 million bushels constituted 75 per cent of total receipts. Receipts at Prince Rupert were composed entirely of barley. Receipts and shipments by elevators were:

Elevator	Capacity million bu.	Stocks August 1, 1956 bu.	Net Receipts bu.	Net Shipments bu.	Stocks, July 31, 1957 bu.
Moose Jaw.....	5.50	5,020,858	1,178,847	803,982	5,395,723
Saskatoon.....	5.50	3,807,796	3,360,049	3,891,856	3,272,128
Calgary.....	2.50	1,742,266	2,160,721	2,625,927	1,277,060
Edmonton.....	2.35	873,170	1,694,169	1,722,057	842,982
Lethbridge.....	1.25	1,167,245	597,682	1,073,176	692,714
Prince Rupert.....	1.25	956,583	8,048,192	8,650,870	349,697
TOTALS.....	18.35	13,567,918	17,039,660	18,767,868	11,830,304

CHARGES

Storage and elevation charges at the interior terminals remained unchanged. Storage charges were 1/45c per bushel per day. Storage charges at Prince Rupert were increased on September 13, 1956 from 1/35c per bushel per day to 1/30c per bushel per day, the same as in effect at the Lakehead and other Pacific Coast elevators. The same applies to elevation charges but at interior elevators, elevation charges on wheat, oats, barley and corn at 1 1/8c per bushel were lower by 1c and on rye at 1 1/8c per bushel and flax at 2 1/4c per bushel were lower by 1 1/2c per bushel than charges at Lakehead and other Pacific terminal elevators.

MAINTENANCE

Elevator buildings, equipment and trackage were maintained in good repair. The installation of a Dust Control System in the Moose Jaw elevator commenced in 1956 was completed in September, 1957. A similar installation is in progress at the Saskatoon elevator and is scheduled for completion in September, 1958. Fire Escapes and Stairwell Enclosures were completed at all elevators. Repairs to concrete surfaces at the Edmonton elevator were completed. Similar repair at the Port Arthur elevator is scheduled for completion in 1958. The first phase of converting the Morris Steam Drier at the Moose Jaw elevator to a direct oil heat system was completed.

Complete new Man-Hoists were installed in the Moose Jaw, Saskatoon and Calgary elevators replacing obsolete and worn out equipment.

A start has been made toward equipping Hillwright workshops throughout with power tools to enable repairs to be made in the plant instead of being sent to outside shops as formerly. This will save time and reduce repair costs.

STAFF

Staff employed as at December 31, 1957, compared with figures at December 31, 1956, is as follows:

	1957		1956	
	Continuing Establishment	Casuals	Continuing Establishment	Casuals
Winnipeg (Head Office).....	8	-	8	-
Moose Jaw.....	31	1	27	4
Saskatoon.....	29	10	26	15
Calgary.....	32	2	30	6
Edmonton.....	30	-	27	13
Lethbridge.....	19	3	18	1
Prince Rupert.....	29	17	23	24
	178	33	159	63

REVENUE AND EXPENDITURE

Revenue and expenditure for the fiscal year 1956-57 compared with the previous fiscal year were as follows:

	1956-57	1955-56
Revenue.	\$1,982,430	\$1,694,032
Expenditure.	1,323,293	1,143,983
Surplus	659,137	490,049

For the first nine months of the current fiscal year revenue was \$1,480,470 and expenditure was \$860,554.

Table J-1 EXPENDITURE, by Point, Branch and General Item, Fiscal Year ended March 31, 1957.

Point and Branch	Salaries	Rent	Travelling Expenses	General Expenses	Total
	\$	\$	\$	\$	\$
WINNIPEG					
Executive	58,958.03	9,129.68	5,711.98	12,634.75	86,464.44
Assistant Commissioners	11,139.96	836.80	1,633.57	391.38	13,941.71
License & Bonding	25,100.98	2,100.00	22.15	2,245.28	29,468.41
Registration	34,366.44	3,135.00	384.10	1,479.19	39,364.73
Research Laboratory	157,685.66	18,838.00	7,215.56	45,591.50	229,330.72
Statistics	82,876.22	6,603.32	953.30	27,645.86	118,078.70
Appeal Tribunal	9,443.27	589.08	-	1,602.29	11,634.64
Standards Committee	-	-	3,961.85	2,750.00	6,711.85
Inspection	638,626.90	26,325.72	4,152.42	39,103.85	708,208.89
Weighing	61,420.44	1,560.40	571.80	1,069.99	64,622.63
CHURCHILL					
Inspection	22,349.28	-	6,005.65	1,009.39	29,364.32
Weighing	12,094.04	-	3,421.38	342.94	15,858.36
KEEWATIN					
Inspection	6,815.40	-	-	20.40	6,835.80
Weighing	9,162.64	-	-	58.46	9,221.10
REGINA					
Assistant Commissioner	11,285.41	1,897.56	2,392.66	407.21	15,981.84
SASKATOON					
Assistant Commissioner	11,980.98	-	1,730.56	182.92	13,894.46
Inspection	38,868.24	877.00	-	1,064.47	40,809.71
Weighing	30,091.57	-	671.69	31.50	30,704.76
MOOSE JAW					
Inspection	34,873.36	1,440.00	154.39	1,226.19	37,693.94
Weighing	18,455.29	-	574.79	31.83	19,061.91
MEDICINE HAT					
Inspection	11,340.00	841.00	-	277.93	12,458.93
Weighing	11,520.89	-	-	38.70	11,559.59
LETHBRIDGE					
Inspection	10,570.24	-	-	111.13	10,711.37
Weighing	4,630.00	-	-	11.75	4,641.75
CALGARY					
Assistant Commissioner	1,976.66	138.00	923.32	37.95	2,475.93
Inspection	107,075.96	6,581.00	723.21	4,408.18	118,788.35
Weighing	50,080.04	712.34	1,205.06	419.43	52,416.87
Appeal Tribunal	6,120.00	892.50	-	1,200.33	8,212.83
EDMONTON					
Assistant Commissioner	9,883.30	1,660.00	9,943.81	679.78	16,166.89
Inspection	121,208.53	8,764.00	107.90	4,593.46	134,673.89
Weighing	13,700.76	-	70.70	115.28	13,886.74
Appeal Tribunal	6,120.00	1,170.00	-	891.78	8,181.78

Table J-1 EXPENDITURE, by Point, Branch and General Item, Fiscal Year ended March 31, 1957 - concluded

Point and Branch	Salaries	Rent	Travelling Expenses	General Expenses	Total
	\$	\$	\$	\$	\$
VANCOUVER					
Inspection	195,575.55	6,965.40	158.90	6,266.16	208,966.01
Weighing	181,266.60	2,675.40	223.32	2,814.68	186,980.00
Registration	10,776.78	1,795.20	-	301.83	12,873.81
VICTORIA					
Inspection	9,030.69	-	443.20	7.00	9,480.89
Weighing	7,985.10	-	62.00	-	8,047.10
PRINCE ROBERT					
Inspection	12,537.98	-	597.81	74.00	13,209.79
Weighing	10,143.22	-	223.26	76.00	10,442.48
FORT WILLIAM					
Inspection	792,421.20	19,598.00	4,951.94	14,871.57	831,842.71
Weighing	610,660.80	4,210.00	21,780.39	8,481.64	645,132.83
TORONTO					
Inspection	8,756.24	1,200.00	516.70	853.02	11,325.96
Weighing	4,380.00	-	-	4.00	4,384.00
CHATHAM					
Inspection	39,026.96	1,380.00	13,653.98	1,470.82	55,531.76
OTTAWA					
Inspection	-	499.00	3,748.02	928.77	5,175.79
MONTREAL					
Inspection	114,062.58	4,296.00	12,156.01	4,142.23	134,656.82
Weighing	5,077.50	939.36	460.67	853.16	7,330.69
Registration	14,700.00	1,664.64	-	989.58	17,354.22
TOTALS	3,646,191.69	139,314.40	104,937.05	193,779.56	4,084,162.70

Table J-2. Accrued Revenue, by Point and Branch, Fiscal Year ended March 31, 1957

Point and Branch	Fees	Samples Sold	Other Revenue (a)	Total
	\$	\$	\$	\$
WINNIPEG				
Executive License & Bonding Registration	29,254.00		460.00	460.00
Appeal Tribunal	33,499.43		7.00	33,506.43
Research Laboratory	2,133.00		3.68 *	2,133.00
Inspection	431,834.25	11,998.13	5,347.60	449,179.98
Weighing	27,647.57		2,320.98	29,968.55
CHURCHILL				
Inspection	52,156.64			52,156.64
Weighing	26,264.32			26,264.32
KENOWAN				
Inspection	6,020.40	486.64	407.16	6,914.20
Weighing	7,537.58			7,537.58
SASKATOON				
Inspection	26,765.63	873.93		27,639.56
Weighing	14,828.21			14,828.21
MOOSE JAW				
Inspection	14,742.97	482.40		15,225.37
Weighing	7,733.60			7,733.60
MEDICINE HAT				
Inspection	11,220.93	324.17		11,545.10
Weighing	12,418.14		1,127.35	13,545.49
LETHBRIDGE				
Inspection	2,547.00	146.05		2,693.05
Weighing	485.00			485.00
CALGARY				
Inspection	103,085.33	2,305.36	406.51	105,797.20
Weighing	18,390.26		1,183.80	19,574.06
Appeal Tribunal	1,422.00			1,422.00
EDMONTON				
Inspection	99,318.26	1,960.88	439.25	101,718.39
Weighing	4,810.59		8.64	4,819.23
Appeal Tribunal	969.00			969.00
VANCOUVER				
Inspection	279,363.39	8,852.53	552.20	288,768.12
Weighing	218,402.86		355.95	218,758.81
Registration	11,853.73			11,853.73
VICTORIA				
Inspection	6,644.63	131.32		6,775.95
Weighing	5,095.47			5,095.47

Table J-2 Accrued Revenue, by Point and Branch, Fiscal Year ended March 31, 1957 - concluded

Point and Branch	Fees	Samples Sold	Other Revenue (a)	Total
	\$	\$	\$	\$
PRINCE RUPERT				
Inspection	17,364.87	154.07		17,518.94
Weighing	12,655.16			12,655.16
FORT WILLIAM				
Inspection	789,279.00	14,710.22	4,347.25	808,336.47
Weighing	606,778.97		4,798.42	611,577.39
TORONTO				
Inspection	3,473.03	90.00	166.07	3,729.10
Weighing	4,380.00			4,380.00
CHATHAM				
Inspection	47,816.37	868.68	1,285.89	49,970.94
MONTREAL				
Inspection	21,182.35	511.74	868.60	22,562.69
Registration	11,588.68			11,588.68
TOTALS	2,970,962.62	43,896.12	21,086.35	3,038,945.09

(a) Details in Table J-4

* Refund of Previous Year's Expenditure

Table J-3. Accrued Revenue and Net Expenditure, by Points and Branches, Fiscal Year ended March 31, 1957

	Inspection	Weighing	Appeal Tribunals	Registration	License and Bonding	Statistics	Research Laboratory	Grain Standards Committee	Administration	Total
	\$	\$	\$	\$	\$	\$	\$	\$	\$	\$
R E V E N U E										
Winnipeg	449,179.98	29,968.55	2,133.00	33,506.43	29,254.00		3.68		460.00	544,505.64
Churchill	52,156.64	26,264.32								78,420.96
Keewatin	6,914.20	7,537.58								14,451.78
Saskatoon	27,639.56	14,828.21								42,467.77
Moose Jaw	15,225.37	7,733.60								22,958.97
Medicine Hat	11,545.10	13,545.49								25,090.59
Lethbridge	2,693.05	485.00								3,178.05
Calgary	105,797.20	19,574.06	1,422.00							126,793.26
Edmonton	101,718.39	4,819.23	969.00							107,506.62
Vancouver	288,768.12	218,758.81		11,853.73						519,380.66
Victoria	6,775.95	5,095.47								11,871.42
Prince Rupert	17,518.94	12,655.16								30,174.10
Fort William	808,336.47	611,577.39								1,419,913.86
Toronto	3,729.10	4,380.00								8,109.10
Chatham	49,970.94									49,970.94
Montreal	22,562.69			11,588.68						34,151.37
Ottawa	-									-
TOTALS	1,970,531.70	977,222.87	4,524.00	56,948.84	29,254.00		3.68		460.00	3,038,945.09
E X P E N D I T U R E										
Winnipeg	708,208.89	64,622.63	11,634.64	39,364.73	29,468.41	118,078.70	229,330.72	6,711.85	100,406.15	1,307,826.72
Churchill	29,364.32	15,858.36								45,222.68
Keewatin	6,835.80	9,221.10								16,056.90
Saskatoon	40,809.71	30,704.76							13,894.46	85,408.93
Moose Jaw	37,693.94	19,061.91								56,755.85
Medicine Hat	12,458.93	11,559.59								24,018.52
Lethbridge	10,711.37	4,641.75								15,353.12
Regina									15,981.84	15,981.84
Calgary	118,788.35	52,416.87	8,212.83						2,475.93	181,893.98
Edmonton	134,673.89	13,886.74	8,181.78						16,166.89	172,909.30
Vancouver	208,966.01	186,980.00		12,873.81						408,819.82
Victoria	9,480.89	8,047.10								17,527.99
Prince Rupert	13,209.79	10,442.48								23,652.27
Fort William	831,842.71	645,132.83								1,476,975.54
Toronto	11,325.96	4,384.00								15,709.96
Chatham	55,531.76									55,531.76
Montreal	134,656.82	7,330.69		17,354.22						159,341.73
Ottawa	5,175.79									5,175.79
TOTALS	2,369,734.93	1,084,290.81	28,029.25	69,592.76	29,468.41	118,078.70	229,330.72	6,711.85	148,925.27	4,084,162.70

Table J-4. Summary of Operations by Branches, Fiscal Year ended March 31, 1957.

	Inspection	Weighing	Appeal Tribunals	Registration	License and Bonding	Statistics	Research Laboratory	Grain Standards Committee	Administration	Total
	\$	\$	\$	\$	\$	\$	\$	\$	\$	\$
R E V E N U E										
Fees	1,912,815.05	967,427.73	4,524.00	56,941.84	29,254.00	-	-	-	-	2,970,962.62
Samples Sold	43,896.12	-	-	-	-	-	-	-	-	43,896.12
Other Revenue:										
Overtime Refunded	9,348.12	9,734.87	-	-	-	-	-	-	-	19,082.99
Express Charges	4,463.90	-	-	-	-	-	-	-	-	4,463.90
Jury Fees	-	48.00	-	-	-	-	-	-	-	48.00
Fines	-	-	-	-	-	-	-	-	460.00	460.00
Refund of Previous Year's Expenses	-	-	-	-	-	-	3.68	-	-	3.68
Miscellaneous Revenue	8.51	12.27	-	7.00	-	-	-	-	-	27.76
TOTALS	1,970,531.70	977,222.87	4,524.00	56,948.84	29,254.00	-	3.68	-	460.00	3,038,945.09
E X P E N D I T U R E										
Salaries	2,163,139.11	1,030,578.89	21,683.27	59,843.22	25,100.98	82,876.22	157,685.66	-	105,224.34	3,646,131.69
Rent	78,767.12	10,097.50	2,651.58	6,594.84	2,100.00	6,603.32	18,838.00	-	13,662.04	139,314.40
Travel	47,370.13	29,265.06	-	384.10	22.15	953.30	7,215.56	3,961.85	15,764.90	104,937.05
General Expenses	65,508.50	10,568.47	3,682.65	2,118.53	1,305.19	4,870.12	41,347.51	2,750.00	12,669.81	144,820.78
Printing and Stationery	14,950.07	3,780.89	11.75	652.07	940.09	22,775.74	4,243.99	-	1,604.18	48,958.78
TOTALS	2,369,734.93	1,084,290.81	28,029.25	69,592.76	29,468.41	118,078.70	229,330.72	6,711.85	148,925.27	4,084,162.70

REGULATIONS

Regulations in effect December 31, 1957, made in accordance with the provisions of the Canada Grain Act

Regulation No.

- 1 Registration and Cancellation of Terminal Elevator Warehouse Receipts.
- 2 Registration and Cancellation of Eastern Warehouse Receipts and Transfer Receipts.
- 3 Plans re Terminal and Eastern Elevators.
- 4 Cleaning Grain and Bins, Terminal and Eastern Elevators.
- 5 Off Grades for western Grain.
- 6 Off Grades for Eastern Grain.
- 7 Grades of Screenings.
- 8 Inspection of Samples taken other than at an Inspection Point.
- 9 Appeals from Inspecting Officers to Grain Appeal Tribunals.
- 10 Delivery of Grain to Ocean Vessels at Montreal, Quebec.
- 11 Delivery of Grain to Ocean Vessels at West Saint John, N.B.
- 12 Delivery of Grain to Ocean Vessels at East Saint John, N.B.
- 13 Delivery of Grain to Ocean Vessels at Halifax, N.S.
- 14 Enforcement of Lien by Sale of Grain.
- 15 Drying of Grain.
- 16 Fees.
- 17 Records, Reports and Returns.
- 18 Procedure, Country Elevators.
- 19 Receipt for Grain Delivered to Private Country Elevators and Mill Elevators.
- 20 Maximum Tariff of Charges, Eastern Elevators.
- 21 Maximum Tariff of Charges and Shrinkage Allowance, Country Elevators.
- 22 Maximum Tariff of Charges, Terminal Elevators.
- 23 Applications for Licences and Terms and Conditions under which Licences are issued.
- 24 Storage in Transit of Grain Grown Outside Canada.
- 25 Tickets and Receipts - Country Elevators.
- 26 Grain Treated with Poisonous Materials.
- 27 Shipment of Infested Grain.

