



Fisheries and Oceans  
Canada

Pêches et Océans  
Canada

Canadian  
Coast Guard

Garde côtière  
canadienne

# Notices to Mariners

**Edition No. 10/2022**  
**October 28, 2022**



Safety First, Service Always

## Monthly Eastern Edition

Canada 

Notices to Mariners – Monthly Eastern Edition  
Edition No. 10/2022

Aussi disponible en français :  
Avis aux navigateurs – Édition mensuelle de l'Est  
Édition n° 10/2022

**Published under the Authority of:**

Canadian Coast Guard Programs  
Aids to Navigation and Waterways  
Fisheries and Oceans Canada  
Montreal, QC H2Y 2E7

For more information, contact [Notmar.XNCR@dfo-mpo.gc.ca](mailto:Notmar.XNCR@dfo-mpo.gc.ca).

© His Majesty the King in Right of Canada,  
as represented by the Minister of Fisheries, Oceans  
and the Canadian Coast Guard, 2022.

Cat. No. Fs152-5E-PDF (Electronic PDF, English)  
ISSN 1719-7678

Cat. No. Fs152-5F-PDF (Electronic PDF, French)  
ISSN 1719-7694

A web version is available here:

<https://www.notmar.gc.ca/monthly> (English)

<https://www.notmar.gc.ca/mensuel> (French)

## Explanatory Notes – Notices to Mariners (NOTMAR)

**Geographical positions** refer directly to the graduations of the largest scale Canadian Hydrographic Service chart (unless otherwise indicated).

**Bearings** refer to the true compass and are measured clockwise from 000° (North) clockwise to 359°; those relating to lights are from seaward.

**Visibility** of lights is that in clear weather.

**Depths** - The units used for soundings (metres, fathoms or feet) are stated in the title of each chart.

**Elevations** are normally given above Higher High Water, Large Tide (unless otherwise indicated).

**Distances** may be calculated as follows:

- 1 nautical mile = 1,852 metres (6,076.1 feet)
- 1 statute mile = 1,609.3 metres (5,280 feet)
- 1 metre = 3.28 feet

### Temporary and Preliminary Notices to Mariners – Section 1A of *Notices to Mariners*

These notices are indicated by a (T) or a (P), respectively. Please note that nautical charts are not amended by the Canadian Hydrographic Service for temporary (T) and preliminary (P) notices. It is recommended that mariners chart these corrections in pencil. For the list of charts affected by (T) & (P) notices, please refer to the current [Notices to Mariners - Monthly Summary of Temporary and Preliminary Notices](#) publication.

### Suggestions and Corrections Form

This form is specifically for suggestions and corrections to Notices to Mariners publications. It is available [online](#) and also in [fillable PDF format](#) included with the monthly publication ZIP file.

To submit comments and suggestions on possible improvements to the various publications and services: [Notmar.XNCR@dfo-mpo.gc.ca](mailto:Notmar.XNCR@dfo-mpo.gc.ca).

To report chart discrepancies and/or corrections to the *Canadian Sailing Directions* booklets: Fill out the [Marine Information Reporting Form](#) and/or email [chsinfo@dfo-mpo.gc.ca](mailto:chsinfo@dfo-mpo.gc.ca).

To report emergencies or navigational hazards: [Contact your nearest MCTS centre](#)

- VHF channel 16 (156.8 MHz)
- MF/HF frequency 2182 kHz/4125 kHz (where available)
- \*16 on a cellphone (where available)

### NOTMAR Website – Monthly Editions, Chart Corrections and Chart Patches

The NOTMAR website allows users to access the [monthly publications](#), [chart corrections](#), and [chart patches](#).

Users can subscribe for free to the [email notification service](#) to receive notifications when charts of interest are updated, including their patches, as well as when a new Monthly Edition of *Notices to Mariners* is published.

In addition, the monthly publication and related files to download, such as chart patches, can be obtained all together through the download of a single ZIP file.

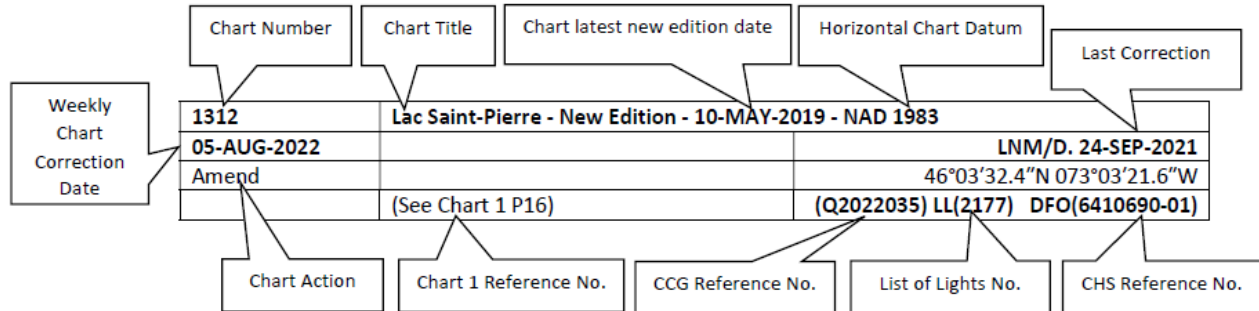
## Explanatory Notes – Canadian Hydrographic Service (CHS)

### Chart Corrections – Section 2 of *Notices to Mariners*

Corrections to nautical charts will be listed in numerical order by chart number. Each chart correction listed applies only to that particular chart. Related charts, if any, will have their own specific correction listed separately.

Users should also refer to CHS *Chart 1: Symbols, Abbreviations and Terms* for additional information pertaining to the correction of charts.

The illustration below describes the elements that will comprise a typical Section 2 chart correction:



The last correction number is identified with the **LN/D** or **Last Notice to Mariners Number / Date**.

Mariners are advised that only the most critical changes that directly affect safety to navigation are issued in “Section 2 – Chart Corrections.” This limitation is required to ensure that charts remain as clear and easy to read as possible. As a result, mariners may see minor discrepancies of a non-critical nature between information in official publications. For example, a small change in the nominal range or focal height of a light may not result in the production of a chart correction in *Notices to Mariners*, but may result in a correction in the [List of Lights, Buoys and Fog Signals](#) publication.

Note: In the case of a discrepancy between information provided on CHS charts relating to aids to navigation, and the *List of Lights, Buoys and Fog Signals* publication, the latter shall be deemed as containing the most up-to-date information.

### Canadian Nautical Charts & Publications

A source list of Canadian nautical charts and publications is published in Notice No. 14 of the *Notices to Mariners Annual Edition 2022*. The source supply and the prices effective at the time of printing are listed. For current chart edition dates, please refer to the following website: [www.chs-shc.gc.ca/charts-cartes/paper-papier/index-eng.asp](http://www.chs-shc.gc.ca/charts-cartes/paper-papier/index-eng.asp).

## Explanatory Notes – Marine Communications and Traffic Services (MCTS)

### Navigational Warnings / Notices to Shipping

The Canadian Coast Guard (CCG) is implementing a number of changes to the aids to navigation system in Canada.

These changes are advertised as Navigational Warnings, formerly called Notices to Shipping<sup>1</sup>, that are broadcast by the CCG, and are then followed up with Notices to Mariners, then charts are updated by hand correction, reprints or new editions.

Mariners are advised that all relevant Navigational Warnings (NAVWARN) should be kept until superseded by Notices to Mariners or through revised charts issued by the Canadian Hydrographic Service (CHS).

NAVWARN are accessible on the applicable regional page on the CCG Navigational Warnings website at <http://nis.ccg-gcc.gc.ca>.

CHS is reviewing the impact of these changes with CCG and together are preparing an action plan on the issuing of chart revisions.

For further information, contact your regional NAVWARN Issuing Desk.

<p><b>Atlantic Region (North)</b> <b>*Port aux Basques MCTS Centre</b></p> <p>“N” Series NAVWARN</p> <p>Canadian Coast Guard 49 Stadium Rd. P.O. Box 99 Port aux Basques, NL A0M 1C0</p> <p>Telephone: 709-695-2168 or 1-800-563-9089 Facsimile: 709-695-7784</p> <p>Email: <a href="mailto:NAVWARN.MCTSPortAuxBasques@innav.gc.ca">NAVWARN.MCTSPortAuxBasques@innav.gc.ca</a></p>	<p><b>Central Region</b> <b>*Prescott MCTS Centre</b></p> <p>“Q” and “C” Series NAVWARN</p> <p>Canadian Coast Guard 401 King Street West P.O. Box 1000 Prescott, ON K0E 1T0</p> <p>Telephone: 613-925-0666 Facsimile: 613-925-4519</p> <p>Email: <a href="mailto:NAVWARN.MCTSPrescott@innav.gc.ca">NAVWARN.MCTSPrescott@innav.gc.ca</a></p>
<p><b>Atlantic Region (South)</b> <b>*Sydney MCTS Centre</b></p> <p>“M” Series NAVWARN</p> <p>Canadian Coast Guard 1190 Westmount Road Sydney, NS B1R 2J6</p> <p>Telephone: 902-564-7751 or 1-800-686-8676 Facsimile: 902-564-7662</p> <p>Email: <a href="mailto:NAVWARN.MCTSSydney@innav.gc.ca">NAVWARN.MCTSSydney@innav.gc.ca</a></p>	<p><b>Arctic Region</b> <b>*Iqaluit MCTS Centre</b></p> <p><i>Operational from approximately mid-May until late December.</i></p> <p>“A” and “H” Series NAVWARN</p> <p>Canadian Coast Guard P.O. Box 189 Iqaluit, NU X0A 0H0</p> <p><u>“A” Series NAVWARN</u> Telephone: 867-979-5269</p> <p><u>“H” Series NAVWARN</u> Telephone: 867-979-0310 Facsimile: 867-979-4264</p> <p>Email: <a href="mailto:NAVWARN.MCTSIqaluit@innav.gc.ca">NAVWARN.MCTSIqaluit@innav.gc.ca</a></p>

\*Service available in English and in French.

<sup>1</sup> The expression “Notice to Shipping” was changed to “Navigational Warning” in January 2019.

## Table of Contents

<b>Section 1: General and Safety Information</b>	<b>1</b>
*401/20 Transport Canada – COVID-19 Measures, Updates and Guidance .....	1
*206/22 Transport Canada – Annual Edition of Notices to Mariners 2022 - Section A3, Notice 7A: Voyage Planning for Vessels Intending to Navigate in Canada's Northern Waters .....	1
*401/22 Protecting the North Atlantic Right Whale: Speed Restriction Measures in the Gulf of St. Lawrence .....	1
*406/22 Saguenay–St. Lawrence Marine Park and Surrounding Waters – Whale Protection .....	8
*407/22 Saguenay–St. Lawrence Marine Park - Beluga Whale Protection: Slowdown Area at the Mouth of the Saguenay Fjord and Area Closure at Baie Sainte-Marguerite .....	10
*1001/22 Canadian Hydrographic Service – Nautical Charts.....	12
*1002/22 Canadian Hydrographic Service – Electronic Navigational Charts.....	12
*1003/22 Canadian Hydrographic Service – Raster Digital Charts (BSB V3).....	13
*1004/22 Transport Canada – Ship Safety Bulletins #19, #20, #21 and #22/2022.....	13
*1005/22 Canadian Hydrographic Service – Canadian Tide and Current Tables – Volumes 1, 2, 5 and 7 .....	14
<b>Section 1A: Temporary and Preliminary Notices</b>	<b>15</b>
Reminder – Comment Period for Active Preliminary Notices .....	15
*1007(P)/22 Bacalhao Island to / à Black Island – Light Buoys to be Discontinued.....	16
*1008(T)/22 Cap de la Tête au Chien au/to Cap aux Oies – Waterway Information: Shallow Depths Reported.....	16
*1009(T)/22 Plans, Baie des Chaleurs/Chaleur Bay (côte nord/North Shore) – Waterway Information: Shallow Depths Reported .....	16
*1010(P)/22 Hillsborough Bay – Aid to Navigation to be Discontinued .....	17
<b>Section 2: Chart Corrections</b>	<b>18</b>
<b>Section 3: Radio Aids to Marine Navigation Corrections</b>	<b>31</b>
No corrections for this section. ....	31
<b>Section 4: Canadian Sailing Directions Corrections</b>	<b>32</b>
<b>Section 5: List of Lights, Buoys and Fog Signals Corrections</b>	<b>33</b>

## Numerical Index of Canadian Charts Affected

This numerical index lists all nautical charts mentioned in this monthly edition of Notices to Mariners. Only charts appearing in Section 2 of this publication require a chart correction. The appearance of charts in all other sections, particularly those related to the correction of other nautical publications, is included here for reference.

Chart No.	Pages	Chart No.	Pages	Chart No.	Pages
1234	<a href="#">16</a>	4861	<a href="#">27, 33</a>		
1311	<a href="#">34</a>	4863	<a href="#">16, 28, 33</a>		
1313	<a href="#">18</a>	4864	<a href="#">28</a>		
1437	<a href="#">34</a>	4921	<a href="#">16</a>		
1438	<a href="#">34</a>	4955	<a href="#">28, 34</a>		
1439	<a href="#">18</a>	4956	<a href="#">28, 29</a>		
1550	<a href="#">15, 18, 19, 35</a>	5031	<a href="#">29, 30</a>		
2067	<a href="#">19, 34</a>	6035	<a href="#">15</a>		
2077	<a href="#">19</a>	6037	<a href="#">15</a>		
2085	<a href="#">19</a>	6211	<a href="#">35</a>		
2086	<a href="#">19</a>	7575	<a href="#">12</a>		
2202	<a href="#">20</a>				
2241	<a href="#">20</a>				
2314	<a href="#">35</a>				
3540	<a href="#">12</a>				
3559	<a href="#">12</a>				
4001	<a href="#">20</a>				
4003	<a href="#">20</a>				
4006	<a href="#">21</a>				
4020	<a href="#">21</a>				
4022	<a href="#">21</a>				
4116	<a href="#">21, 22</a>				
4117	<a href="#">22</a>				
4141	<a href="#">22, 23, 24, 25</a>				
4203	<a href="#">15</a>				
4466	<a href="#">17</a>				
4592	<a href="#">25</a>				
4619	<a href="#">25</a>				
4643	<a href="#">25</a>				
4701	<a href="#">25, 26</a>				
4731	<a href="#">26</a>				
4820	<a href="#">26, 27, 34</a>				
4821	<a href="#">27, 33</a>				
4839	<a href="#">27, 33</a>				
4846	<a href="#">27</a>				

## Section 1: General and Safety Information

---

### **\*401/20 Transport Canada – COVID-19 Measures, Updates and Guidance**

(Recurrent publication of notice \*401/20, originally published in the *Notices to Mariners – Monthly Eastern Edition 04/2020* publication.)

Please refer to the link below for the latest updates to transportation related measures taken by Transport Canada in response to the evolving novel Coronavirus disease (COVID-19):  
<https://www.tc.gc.ca/en/initiatives/covid-19-measures-updates-guidance-tc.html>.

For travel advice and all other updates, please visit: [Canada.ca/coronavirus](https://Canada.ca/coronavirus).

### **\*206/22 Transport Canada – Annual Edition of Notices to Mariners 2022 - Section A3, Notice 7A: Voyage Planning for Vessels Intending to Navigate in Canada's Northern Waters**

(Recurrent publication of notice \*206/22, originally published in the *Notices to Mariners – Monthly Eastern Edition 02/2022* publication.)

Transport Canada has revised notice 7A, Voyage Planning for Vessels Intending to Navigate in Canada's Northern Waters, of the *Annual Edition of Notices to Mariners* to reflect Arctic Shipping Safety and Pollution Prevention Regulations ([ASSPPR](#)) and to provide further guidance on voyage planning.

### **\*401/22 Protecting the North Atlantic Right Whale: Speed Restriction Measures in the Gulf of St. Lawrence**

(Recurrent publication of notice \*401/22, originally published in the *Notices to Mariners – Special Edition 02/2022* publication.)

#### **PURPOSE**

This notice describes the speed restriction zones that vessels must follow in the Gulf of St. Lawrence.

The Government of Canada has established these zones to reduce the risk of vessel colliding with North Atlantic right whales (NARW).

#### **BACKGROUND**

Due to changing migration patterns of North Atlantic right whales and their increased presence in the Gulf of St. Lawrence, the Government of Canada has set seasonal speed restrictions in specific zones. These speed restrictions zones are defined as “static zones,” “dynamic shipping zones,” “seasonal management areas,” a trial “voluntary slowdown zone” and a “restricted area.” [See the map below for details.](#)

Note: Vessels **must follow** Navigational Warnings outlining the speed restrictions. The *Interim Order for the Protection of North Atlantic Right Whales (Eubalaena Glacialis) in the Gulf of St. Lawrence, 2022* enables the issuance of Navigational Warnings (NAVWARNs) imposing speed restrictions and navigation restrictions.

Speed restriction zones are described in monthly Notices to Mariners (NOTMARs), which are published by the Canadian Coast Guard. The status of these zones is broadcast through NAVWARNs, which are published by the Coast Guard's Marine Communications and Traffic Services Centres.

#### **CHANGES TO SPEED RESTRICTION ZONES AND MEASURES**

Based on consultations with industry and on scientific data, changes to the speed restriction zones will be effective from April 20, 2022, while the restricted area will be implemented based on whale presence:

- For a third and final year, a trial voluntary slowdown of 10.0 knots over the ground spanning from Cabot Strait (a line running from Cape North NS to Cape Ray NL) to the eastern edge of dynamic shipping zone E will be implemented at the beginning and end of the North Atlantic right whale season.



- Again this year, a restricted area located in and near Shediac Valley. The location and size are both based on historical data of North Atlantic right whale aggregations, while the triggering mechanism is based on in-season detections.
- The 36.57 m (20-fathom) shallow water protocol will apply once again to all commercial fishing vessels.

Please check the latest NAVWARN for all speed restrictions currently in effect.

### **SPEED RESTRICTION MEASURES FOR 2022**

These restrictions will be in effect from **April 20 to November 15, 2022**.

#### **Exceptions**

The following exception will apply to **all** measures:

- a) a vessel in distress or providing assistance to a person or a vessel in distress;
- b) a government vessel being used
  - (i) for law enforcement activities;
  - (ii) for search and rescue operations; or
  - (iii) to ensure the competency of the crew or the operational readiness of the vessel or crew with respect to such activities or operations.

#### **STATIC ZONES**

In the static zones, **all** vessels above **13 m** in length overall (LOA) must proceed at a speed of not more than 10.0 knots over the ground.

#### **Exceptions**

Air cushion vessels operated by or on behalf of the Government of Canada that are engaged in ice-clearing activities from April to June in and around Chaleur Bay are exempted when in operation.

#### **36.57 m (20-fathom) shallow water protocol**

Vessels engaged in any commercial fishing activity may proceed at a safe operational speed in waters not more than 36.57 m (20 fathom) deep.

If a notice to fish harvesters states that at least one right whale has been detected within static zone in waters that are not more than 36.57 m deep, the 10 knots speed limit will apply to all vessels above 13 m in length overall (LOA) 15 days after the day on which the whale was detected.

If a new notice to fish harvesters is published or broadcast during the last seven days of the 15-day period, the speed limit will continue to apply for a further 15 days after the day on which the new detection took place.

#### **Coordinates for the northern static zone:**

- 50° 20' N, 065° 00' W
- 49° 13' N, 065° 00' W
- 48° 40' N, 064° 13' W
- 48° 40' N, 062° 40' W
- 48° 03' N, 061° 07.5' W
- 47° 58.1' N, 061° 03.5' W
- 48° 00' N, 061° 00' W
- 49° 04' N, 061° 00' W
- 49° 04' N, 062° 00' W
- 49° 43' N, 063° 00' W
- 50° 20' N, 063° 00' W

#### **Coordinates for the southern static zone:**

- 48° 40' N, 065° 00' W
- 48° 40' N, 062° 40' W
- 48° 03' N, 061° 07.5' W
- 47° 58.1' N, 061° 03.5' W
- 47° 10' N, 062° 30' W
- 47° 10' N, 065° 00' W

## DYNAMIC SHIPPING ZONES

There are five dynamic shipping zones (DSZ) located in the routing systems north and south of Anticosti Island: A, B, C, D and E.

### Coordinates for the dynamic shipping zones:

#### Zone A

- 49° 41' N, 065° 00' W
- 49° 20' N, 065° 00' W
- 49° 11' N, 064° 00' W
- 49° 22' N, 064° 00' W

#### Zone B

- 49° 22' N, 064° 00' W
- 49° 11' N, 064° 00' W
- 48° 48' N, 063° 00' W
- 49° 00' N, 063° 00' W

#### Zone C

- 49° 00' N, 063° 00' W
- 48° 48' N, 063° 00' W
- 48° 24' N, 062° 00' W
- 48° 35' N, 062° 00' W

#### Zone D

- 50° 16' N, 064° 00' W
- 50° 00' N, 064° 00' W
- 49° 56' N, 063° 00' W
- 50° 16' N, 063° 00' W

#### Zone E

- 48° 35' N, 062° 00' W
- 48° 24' N, 062° 00' W
- 48° 03' N, 061° 07.5' W
- 47° 58.1' N, 061° 03.5' W
- 48° 00' N, 061° 00' W
- 48° 10.5' N, 061° 00' W

When a North Atlantic right whale is detected in a dynamic shipping zone:

- All vessels will be notified via a NAVWARN; and
- Vessels above **13 m** in length overall (LOA) must proceed at a speed of not more than 10.0 knots over the ground within that zone.

Even though dynamic shipping zones overlap with static zones, vessels can travel at a safe operational speed in dynamic shipping zones when they are not under speed restriction. They must also keep in mind that North Atlantic right whales may be nearby.

### Speed restrictions in the dynamic shipping zones

The detection of North Atlantic right whales in one or more dynamic shipping zone(s), will trigger a speed restriction in the concerned zone(s). The speed restriction in the dynamic shipping zone(s) will be in effect for 15 days from the date of detection. In the event of a new North Atlantic right whale detection occurring in the last 7 days of the 15-day slowdown period, the speed restriction may be extended for an additional 15 days from the date of the new detection. This would continue until no NARW are detected.

When a NAVWARN is issued implementing a speed restriction in one or more dynamic shipping zone(s), vessels above **13 m** in length (LOA) must not exceed a speed of 10.0 knots over the ground. Within any dynamic zone that is not subject to a speed restriction, mariners may proceed at a safe operational speed. Mariners are encouraged to take into consideration the potential for their vessel striking North Atlantic right whales when considering a “safe operational speed” during navigation.

## SEASONAL MANAGEMENT AREAS

Seasonal management area 1 (SMA-1) and seasonal management area 2 (SMA-2) are speed restriction areas located north and south of dynamic shipping zone E, respectively.

Within seasonal management areas, vessels above **13 m** in length (LOA):

- must restrict their speed so as not to exceed 10.0 knots over the ground from April 20 to June 28, 2022; **and**
- are allowed to proceed at a safe operational speed from June 29 to November 15, 2022, unless a North Atlantic right whale is detected. If a whale is detected, a speed restriction of 10.0 knots over the ground will be triggered for 15 days from the date of detection. In the event of a new North Atlantic right whale detection occurring in the last 7 days of the 15-day slowdown period, the speed restriction may be extended for an additional 15 days from the date of the new detection. This would continue until no North Atlantic right whales are detected.

**Coordinates for the SMA-1:**

- 49° 04' N, 062° 00' W
- 49° 04' N, 061° 00' W
- 48° 10.5' N, 061° 00' W
- 48° 35' N, 062° 00' W

**Coordinates for the SMA-2:**

- 48° 24' N, 062° 00' W
- 48° 03' N, 061° 07.5' W
- 47° 58.1' N, 061° 03.5' W
- 47° 26.69' N, 062° 00' W

**RESTRICTED AREA**

In the summer months, an important proportion of the total North Atlantic right whale population gathers for feeding and surface activity near the [Shediac Valley](#). Since this makes the North Atlantic right whale more susceptible to vessel collisions, a mandatory restricted area will be implemented in and near the [Shediac Valley](#) and will come into force once 80% of the restricted area is closed to fishing for the season as per [the Department of Fisheries and Oceans's right whale closure protocol](#). The restricted area will be lifted once the North Atlantic right whale detections decrease in the restricted area.

The size and location of the area are determined based on historical detection data of North Atlantic right whales. All necessary details can be found in the *Interim Order for the Protection of North Atlantic Right Whales (Eubalaena Glacialis) in the Gulf of St. Lawrence, 2022*. Triggering and lifting of the restricted area will be communicated to mariners through a NAVWARN and notice to fish harvesters.

Vessels above **13 m** in length (LOA) will be required to:

- avoid the area unless they are part of the exceptions listed in the *Interim Order for the Protection of North Atlantic Right Whales (Eubalaena Glacialis) in the Gulf of St. Lawrence, 2022*;
- transit the area at a speed not exceeding 8.0 knots over the ground if they are part of the exceptions.

The following exceptions will apply to the restricted area. Vessels listed can travel through the area at not more than 8.0 knots over the ground:

- A vessel being used for commercial fishing;
- A vessel being used for fishing under the authority of a licence issued under the *Aboriginal Communal Fishing Licences Regulations*;
- A vessel being used for research purposes on behalf of the Government of Canada;
- A vessel being used as part of the Department of Fisheries and Oceans' Marine Mammal Response Program to assist a marine mammal or sea turtle in distress or to access or retrieve a deceased marine mammal or sea turtle;
- A vessel authorized by the Government of Canada to retrieve or identify the location of abandoned or lost fishing gear;
- A vessel involved in pollution response operations;
- A vessel avoiding immediate or unforeseen danger;
- A vessel involved in research relating to right whales as part of a project that has received funding from the Government of Canada.

The following vessels can travel through the restricted area at a speed over 8.0 knots, but below 10.0 knots over the ground as required by the static speed restriction zone:

- A vessel being used by an employee of the Government of Canada or peace officer who is performing their duties.

The location and size of the restricted area will not be modified during the season.

**Coordinates for the restricted area:**

- 48°31.8' N, 063°39.6' W
- 48°24.72' N, 063°17.88' W
- 47°18.84' N, 064°10.8' W
- 47°27.18' N, 064°30.72' W

### **Inclement weather exception**

Mariners will be notified in advance via a NAVWARN should the speed restriction status change in any zone or area, due to inclement weather.

Within any zone or area that is no longer subject to a speed restriction due to adverse weather conditions, mariners may proceed at a safe operational speed. Mariners are however encouraged to take into consideration the potential for their vessel striking North Atlantic right whales when considering a “safe operational speed” during navigation.

\*Non-excepted vessels are still prohibited from transiting through the restricted area.

### **TRIAL VOLUNTARY SLOWDOWN IN CABOT STRAIT**

To coincide with the North Atlantic right whales entering and exiting the Gulf of St. Lawrence in large numbers, a trial voluntary slowdown is being put in place for the third year in Cabot Strait from April 20 to June 28, 2022, and from September 28 to November 15, 2022.

- During these periods, vessels above 13 m in length (LOA) are requested to voluntarily reduce their speed as to not exceed 10.0 knots over the ground.

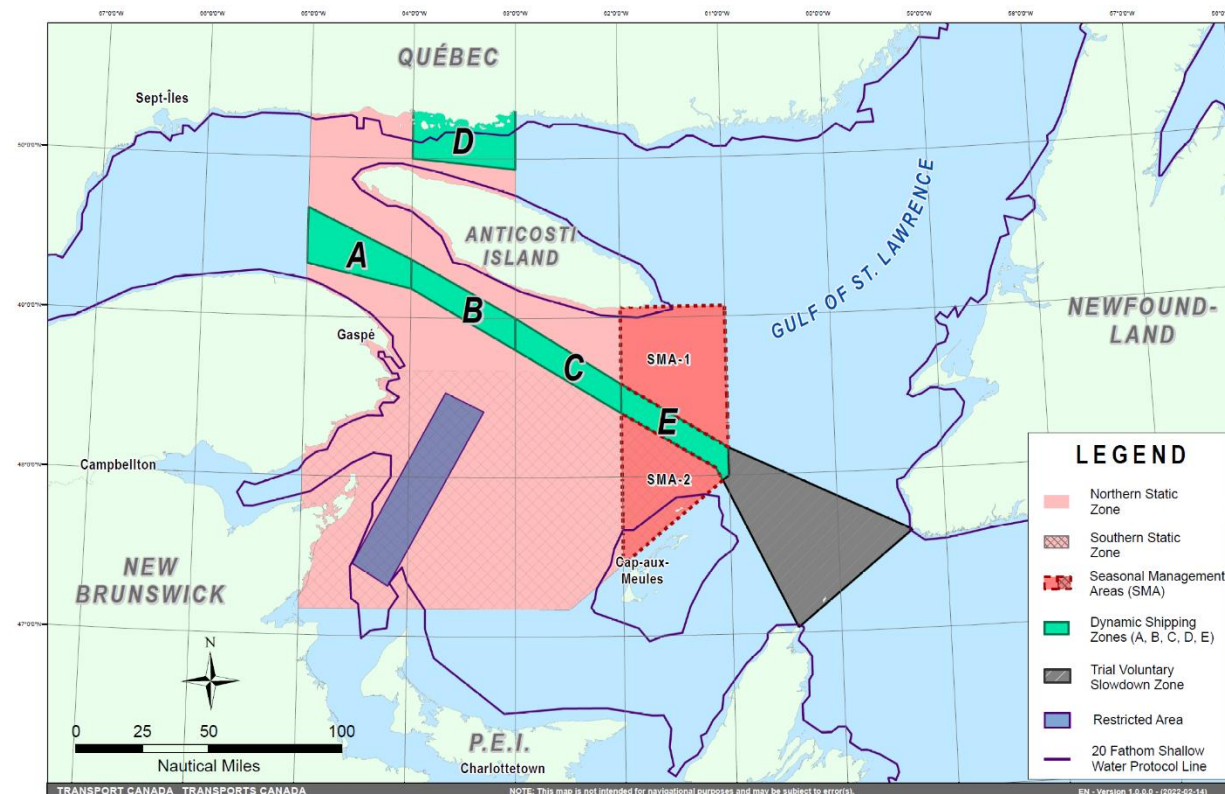
### **Voluntary slowdown zone coordinates:**

- 48° 10.5' N, 061° 00' W
- 47° 37.2' N, 059° 18.5' W
- 47° 02' N, 060° 23.7' W
- 47° 58.1' N, 061° 03.5' W
- 48° 00' N, 061° 00' W

### **MAP OF THE GULF OF ST. LAWRENCE**

The following map shows

- the static zones (north and south), in pink;
- the dynamic shipping zones (A, B, C, D and E), in green;
- the seasonal management areas, in dark pink;
- the trial voluntary slowdown zone, in grey;
- the restricted area, in dark blue; and
- the 36.57 m (20 fathom) shallow water protocol line.



This map is for visual representation only and is not to be used for navigation or enforcement.

### NAVWARN BROADCASTS

The Canadian Coast Guard issues NAVWARNs:

- by radio broadcast; and
- online at [Canada's Maritime Information Portal](#) and its [Navigational Warnings](#) site.

Mariners must ensure they have accurate and up-to-date information about the protection of the North Atlantic right whale, as in all applicable NOTMARs and NAVWARNs.

For the North Atlantic right whale speed restrictions, the NAVWARN(s) currently in effect will be provided to vessels subject to the *Vessel Traffic Services Zone Regulations* or the *Eastern Canada Vessel Traffic Services Zone Regulations*:

#### Outbound vessels will receive NAVWARNs

- at Calling-in-Point 10 (St-Laurent); or
- upon a departure downstream from the Quebec pilot station (including the Saguenay River, Chaleur Bay, Miramichi Bay, etc.)

#### Inbound vessels will receive NAVWARNs

- when a clearance to enter Canadian waters is granted

#### Vessels in transit will receive NAVWARNs

- at the last reporting point prior to entering the mandatory speed restriction zones; and/or
- at 10 nautical miles before they enter the mandatory speed restriction zones

For those vessels not subject to the above-mentioned regulations, vessel operators are required to monitor broadcasts by the Canadian Coast Guard's Marine Communications and Traffic Services network for the most up-to-date information. For marine radio frequencies and broadcast times, information may be found in the [Radio Aids to Marine Navigation](#) publication.

## AIDS TO NAVIGATION

The Canadian Coast Guard is currently testing virtual Automatic Identification System (AIS) aids to navigation (AIS AtoN) in specific areas. These aids notify mariners of a dynamic shipping zone and/or a seasonal management area subject to a speed restriction.

Each zone is delimited by four to six virtual AIS AtoN, which can be displayed on a ship's navigation equipment, such as

- Electronic Chart Display and Information System (ECDIS);
- Electronic Chart System (ECS);
- RADAR;
- Minimum Keyboard Display (MKD); and
- Electronic Nautical Chart (ENC).

The Canadian Coast Guard broadcasts the virtual AIS AtoN only when a speed restriction is in effect in one or more testing zones.

Mariners must select the virtual AIS AtoN symbol to view a message such as "SectA1 Spd Lim 10 kt." This message refers to a speed restriction in effect for a specific zone.

Note: This system is not the primary method of communicating this information.

## COMPLIANCE AND ENFORCEMENT

Vessels must comply with the Interim Orders made pursuant to the *Canada Shipping Act, 2001*, and any NAVWARNs broadcast and published by the Canadian Coast Guard relating to the Interim Orders, aimed at regulating the navigation for the purposes of protecting the North Atlantic right whales.

If a vessel does not comply with the Interim Orders or instructions in the NAVWARNs related to the Interim Orders, the vessel could face:

- administrative monetary penalties up to a maximum of CAN \$250,000; and/or
- penal sanctions under the *Canada Shipping Act, 2001*.

If a vessel appears to have violated the speed restriction, Transport Canada Marine Safety inspectors will review all information provided through AIS and seek an explanation from the master.

No exemptions to the speed restriction will be granted in advance. However, if a deviation from the speed restrictions is necessary for safety reasons, the following information must be entered into the bridge logbook:

- reason(s) for deviation;
- speed at which vessel is operated;
- latitude and longitude at time of deviation;
- time and duration of deviation; and
- master of the vessel shall sign and date the bridge logbook entry.

For any deviation, Transport Canada will review and consider reasons such as:

- navigating to ensure vessel safety;
- weather conditions;
- force majeure (unforeseeable circumstances); and
- responding to emergencies.

## **REPORT A NORTH ATLANTIC RIGHT WHALE SIGHTING**

**If you see live, free-swimming whales:**

- Call 1-902-440-8611 (local) or 1-844-800-8568 (toll free)
- Email: [XMARWhalesightings@dfo-mpo.gc.ca](mailto:XMARWhalesightings@dfo-mpo.gc.ca)

If you see a North Atlantic right whale that is entangled, injured or dead, please report it to your nearest Canadian Coast Guard Marine Communications and Traffic Services Centre, or call:

### **Southern part of the Gulf of St. Lawrence**

Marine Animal Response Society  
Telephone: 1-866-567-6277

### **Newfoundland and Labrador**

Whale Release and Strandings  
Telephone: 1-888-895-3003

### **For the Québec Sector**

Marine Mammal Emergencies  
Telephone: 1-877-722-5346

**Please consult WhaleMap for the latest right whale observations:** <https://whalemap.org/>

## **\*406/22 Saguenay–St. Lawrence Marine Park and Surrounding Waters – Whale Protection**

(Recurrent publication of notice \*406/22, originally published in the *Notices to Mariners – Monthly Eastern Edition 04/2022* publication.)

The waters in and around the Saguenay–St. Lawrence Marine Park are well known for the resident endangered beluga population and the wide diversity of whales that migrate there to feed, particularly between April and November.

## **REGULATORY PROTECTION MEASURES**

All whale species that are found in the St. Lawrence are protected under the *Marine Mammal Regulations*, pursuant to the *Fisheries Act*. Within the boundaries of the Marine Park, specific measures are set out in the *Marine Activities in the Saguenay–St. Lawrence Marine Park Regulations*, pursuant to the establishment of the *Saguenay–St. Lawrence Marine Park Act*. Any collision with a marine mammal within the Marine Park must immediately be reported to a park warden at 1-866-508-9888. For collisions that occur outside the Marine Park or for any situation involving a marine mammal that is dead or in trouble, contact the emergency network at 1-877-722-5346 or on VHF channel 16.

For more information on the Saguenay–St. Lawrence Marine Park, see notice 5C of the *Notices to Mariners Annual Edition 2022*.

**VOLUNTARY PROTECTION MEASURES**

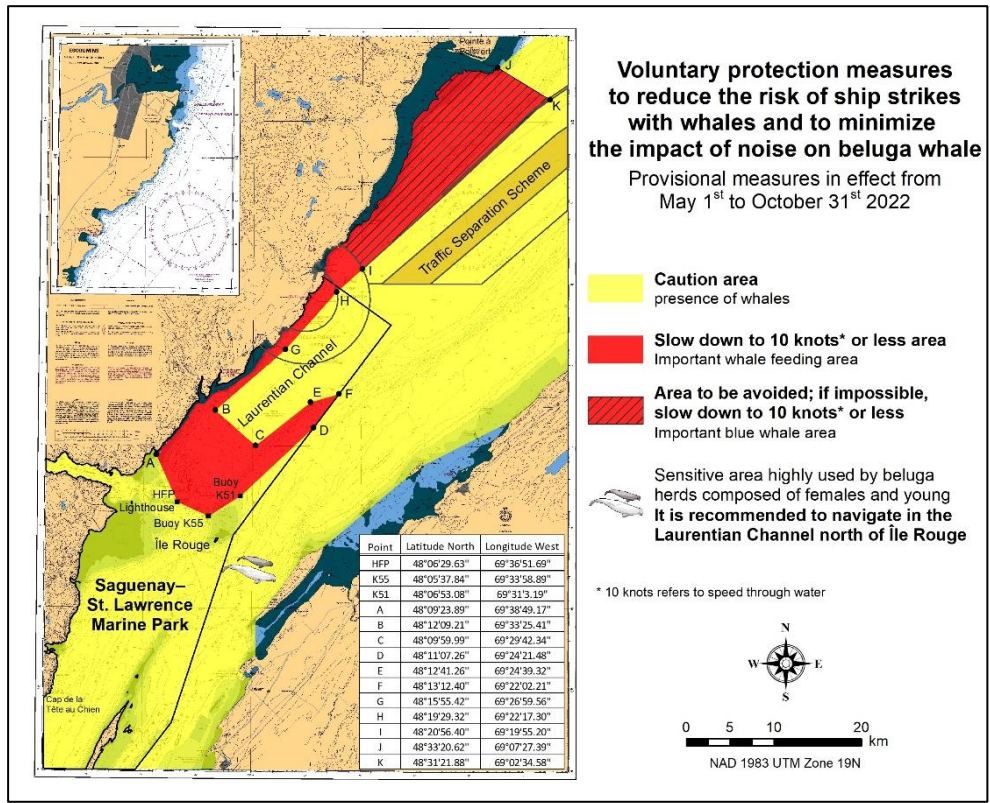
Provisional measures in effect from May 1 to October 31, 2022. See map at the end of this notice.

These measures apply to merchant vessels and cruise ships between Pointe à Boisvert and Cap de la Tête au Chien to prevent collisions with whales. These measures should only be taken when they will not jeopardize navigational safety.

**Caution area (yellow area):** To reduce the risk of collisions with whales that can be present anywhere in this area, heightened vigilance of navigators is critical. Posting a lookout is recommended in order to increase the chances of seeing the whales and thus taking necessary measures to avoid them. If bypassing the whales is not possible, slow down and wait for the animals to move away to a distance greater than 400 metres (0.215 nautical miles) before resuming original speed. It is more difficult to see the animals at night therefore increased caution is recommended.

**Slow down to 10 knots or less area (red area):** To reduce the risk of collisions with whales in this feeding area, it is recommended that vessels slow down to a maximum speed through the water of 10 knots and post a lookout. It is further recommended to remain in the Laurentian Channel to the north of Île Rouge to minimize the impact of noise in a sensitive area south of this island, which is highly frequented by herds of beluga whales composed of females and young.

**Area to be avoided (hatched red area):** To reduce noise and the risk of collisions with whales, vessels should avoid transiting through this area which is highly frequented by blue whales, an endangered species. If the area cannot be avoided, slow down to a speed through the water of 10 knots or less.





**\*407/22 Saguenay–St. Lawrence Marine Park - Beluga Whale Protection: Slowdown Area at the Mouth of the Saguenay Fjord and Area Closure at Baie Sainte-Marguerite**

(Recurrent publication of notice \*407/22, originally published in the *Notices to Mariners – Monthly Eastern Edition 04/2022* publication.)

The Saguenay–St. Lawrence Marine Park and its surrounding area are at the heart of endangered beluga whale critical summer habitat. Marine mammal protection measures have been put in place in accordance with the *Marine Activities in the Saguenay–St. Lawrence Marine Park Regulations* within the limits of the Marine Park.

However, important feeding, calving and rearing areas for beluga whales require greater protection to ensure the recovery of the species. The portion of the Saguenay situated between the mouth of the Fjord and Baie Sainte-Marguerite is one of the areas most used by females and their young from May to October. The mouth of the Saguenay is known as a feeding ground and Baie Sainte-Marguerite as a calving and rearing area.

In order to prevent collisions with beluga whales, a compulsory 15-knot slowdown area is in effect from May 1<sup>st</sup> to October 31<sup>st</sup> at the mouth of the Saguenay. To ensure tranquility for female belugas and their young during the critical calving period, access to Baie Sainte-Marguerite is prohibited to all vessels from June 21<sup>st</sup> to September 21<sup>st</sup>, except for special authorizations (see description below).

For safety reasons, *the slowdown area measure at the mouth of the Saguenay Fjord does not apply* to cargo ships (see the monthly edition of *Notice to Mariners* from May to October for voluntary protection measures in the St. Lawrence Estuary). An enhanced vigilance is, however, recommended to all navigators between the mouth of the Saguenay Fjord and Baie Sainte-Marguerite for the protection of beluga whales.

For more information on the Saguenay–St. Lawrence Marine Park, see notice 5C of the *Notices to Mariners Annual Edition 2022* or visit [marinepark.qc.ca](http://marinepark.qc.ca).

**REGULATORY PROTECTION MEASURES — BELUGA WHALE**

**Entire Marine Park Territory:**

- When beluga whales are less than half a nautical mile (926 metres) from a motorized vessel, the vessel must maintain a steady speed of between 5 and 10 knots.
- All vessels, including human-powered vessels (kayaks and canoes), must continue to move forward and maintain their heading.
- All vessels must maintain a minimum distance of 400 metres from beluga whales at all times.

For more information concerning the regulations, consult: [marinepark.ca/protect/](http://marinepark.ca/protect/).

**Mouth of the Saguenay Fjord (Figure 1) — Slowdown Area (area crosshatched in red):**

- Maximum speed at the mouth of the Saguenay between buoys S7 and S8 and the ferry docks between Baie-Sainte-Catherine and Tadoussac is 15 knots from May 1<sup>st</sup> to October 31<sup>st</sup>.

**Baie Sainte-Marguerite (Figure 2) — Area Closure (red area):**

- From June 21<sup>st</sup> to September 21<sup>st</sup>, vessels must not enter the red area, which follows a line between Cap Nord-Ouest and Cap Sainte-Marguerite.
- Special authorizations are granted only for kayaks, canoes and recreational fishermen who must travel without stopping along a corridor within 10 metres of the shore or in shallow areas.

**VOLUNTARY PROTECTION MEASURES**

**Baie Sainte-Marguerite sector (Figure 2) — Transit Area (area crosshatched in yellow):**

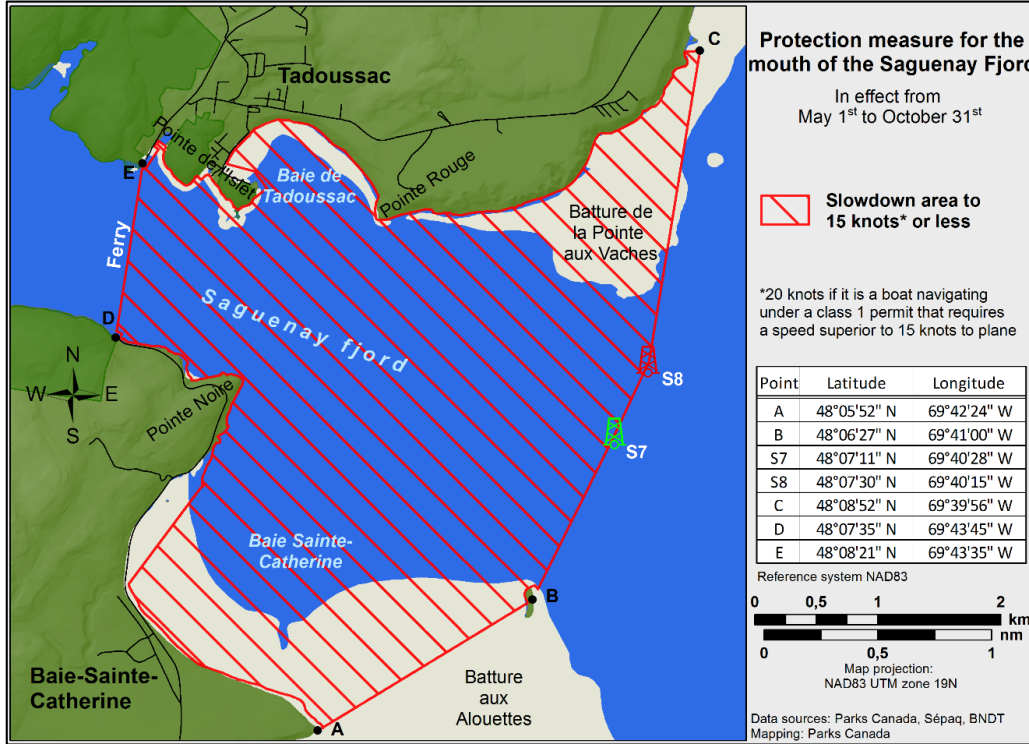
- From June 21<sup>st</sup> to September 21<sup>st</sup>, navigation in this area is recommended at a speed of between 5 and 10 knots without stopping.

The purpose of this transit area is to favour respect of the *Marine Activities in the Saguenay–St. Lawrence Marine Park Regulations*, since beluga whales are often present in the Baie Sainte-Marguerite sector.

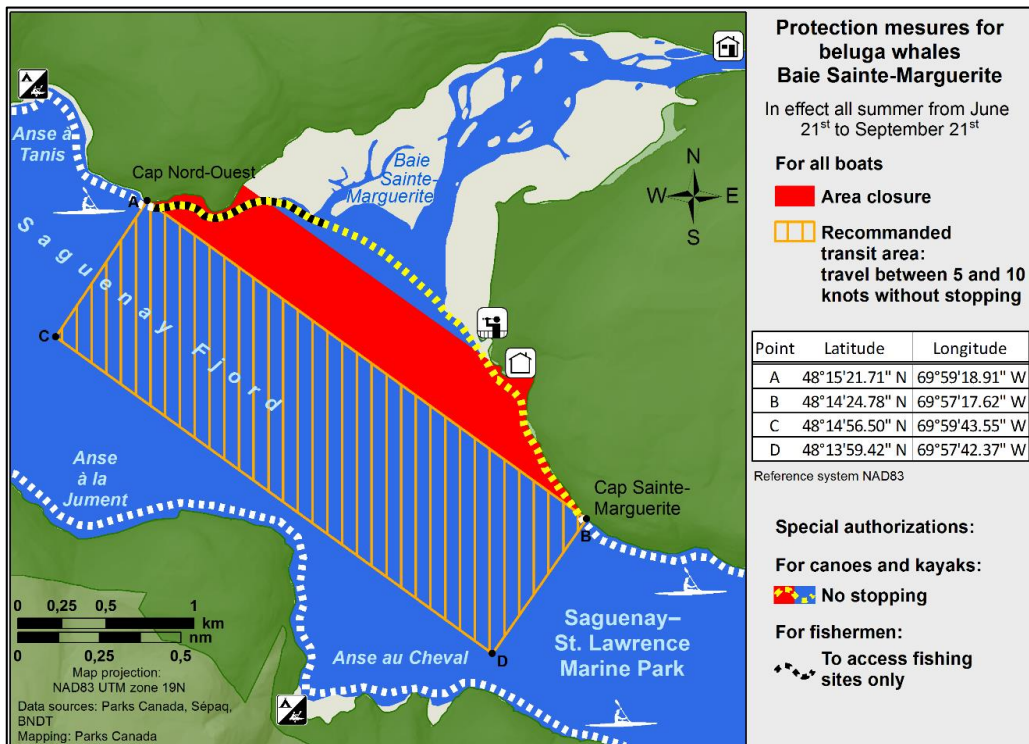
**INFORMATION**

All incidents, including collisions with whales, must be reported without delay by calling 1-866-508-9888. For any other situation concerning a marine mammal that is either dead or in trouble, contact the Marine Mammal Emergency Response Network at 1-877-722-5346, or use VHF channel 16.

**Figure 1**



**Figure 2**



**\*1001/22 Canadian Hydrographic Service – Nautical Charts**

Charts	Main Title	Scale	Published	Cat#	Price
<b>New Editions</b>					
3540	Approches to/Approches à Campbell River	1:10 000	2022-10-21	2	\$20.00
3559	Malaspina Inlet, Okeover Inlet and/et Lancelot Inlet	1:12 000	2022-10-21	2	\$20.00
7575	Peel Sound and/et Prince Regent Inlet	1:300 000	2022-10-21	4	\$20.00

**\*1002/22 Canadian Hydrographic Service – Electronic Navigational Charts**

S-57 ENC Number	Chart Title	ENC Compilation Scale	Published
<b>New Charts</b>			
CA43XJ6A (Edn 1.000)	Northern Lake Huron West - Gridded Cell at 4500N8400W	1:45 000	2022-10-21
CA43XJGA (Edn 1.000)	Northern Lake Huron East - Gridded Cell at 4500N8300W	1:45 000	2022-10-21
CA448J6A (Edn 1.000)	Western North Channel - Gridded Cell at 4600N08400W	1:25 000	2022-10-21
CA448JGA (Edn 1.000)	Eastern North Channel - Gridded Cell at 4600N08300W	1:25 000	2022-10-21
<b>New Editions</b>			
CA273257 (Edn 9.000)	Prince Regent Inlet	1:150 000	2022-10-28
CA273274 (Edn 8.000)	Gulf of Boothia and Committee Bay	1:250 000	2022-10-28
CA273329 (Edn 6.000)	M'Clintock Channel, Larsen Sound and/et Franklin Strait	1:250 000	2022-10-28
CA471018 (Edn 2.000)	Dogfish Banks	1:180 000	2022-10-14
CA471021 (Edn 2.000)	Atli Inlet	1:180 000	2022-10-14
CA471061 (Edn 2.000)	CA471061	1:90 000	2022-10-14
CA471062 (Edn 2.000)	CA471062	1:90 000	2022-10-14
CA471064 (Edn 2.000)	CA471064	1:45 000	2022-10-14
CA471065 (Edn 2.000)	CA471065	1:90 000	2022-10-14
CA476494 (Edn 7.000)	Sandwich Bay	1:25 000	2022-10-21
CA570123 (Edn 9.000)	Vancouver Harbour Central Portion/Partie Centrale	1:6 000	2022-10-07
CA571006 (Edn 2.000)	Masset Harbour and Approaches / et les approches (Part 2 of 6)	1:22 000	2022-10-14
CA579101 (Edn 4.000)	Grosse-Île-nord	1:2 500	2022-10-21
<b>Charts Permanently Withdrawn</b>			
CA373060	Meldrum Bay to/à St.Joseph Island	Cancelled by CA448JGA, CA448J6A, CA43XJGA, CA43XJ6A	
CA473043	Bayfield Sound	Cancelled by CA448JGA, CA448J6A, CA43XJGA, CA43XJ6A	

S-57 ENC Number	Chart Title	ENC Compilation Scale	Published
CA473045	John Island to Blind River	Cancelled by CA448JGA, CA448J6A, CA43XJGA, CA43XJ6A	
CA473251	Croker Island to/à John Island	Cancelled by CA448JGA, CA448J6A, CA43XJGA, CA43XJ6A	
CA473285	Bruce Mines to/à Sugar Island	Cancelled by CA448JGA, CA448J6A, CA43XJGA, CA43XJ6A	
CA473288	Clapperton Island to/à Darch Island	Cancelled by CA448JGA, CA448J6A, CA43XJGA, CA43XJ6A	

**\*1003/22 Canadian Hydrographic Service – Raster Digital Charts (BSB V3)**

Charts	Main Title	Scale	Published
<b>New Charts</b>			
RM-3497	Vancouver Harbour Central Portion/Partie Centrale	1:6 000	2022-10-14
<b>New Editions</b>			
RM-3540	Approaches to/Approches à Campbell River	1:10 000	2022-10-21
RM-3559	Malaspina Inlet, Okeover Inlet and/et Lancelot Inlet	1:12 000	2022-10-21
RM-7575	Peel Sound and/et Prince Regent Inlet	1:300 000	2022-10-21
RM-7578	Pelly Bay	1:125 000	2022-10-14

**\*1004/22 Transport Canada – Ship Safety Bulletins #19, #20, #21 and #22/2022**

New **Ship Safety Bulletins** have recently been posted on the [Transport Canada website](#).

To view or download these bulletins, please click on the links below:

[SSB#19/2022](#) – Access to shore leave  
RDIMS# 18919787

[SSB#20/2022](#) – Georgian seafarers can now seek Canadian recognition of their STCW certificates  
RDIMS# 18878028

[SSB#21/2022](#) – Updated guidelines respecting the mobility of asymptomatic, presumed non-COVID-19-carrying\* seafarers in the marine sector during the COVID-19 pandemic (**Repealed on October 1, 2022**)  
RDIMS# 18910780

[SSB#22/2022](#) – Guidance for cruise operators to mitigate risks associated with COVID-19  
RDIMS# 18943341

Sign up for [e-Bulletin](#) to receive an e-mail notice each time a new Ship Safety Bulletin is published on our website.

Contact us at [marinesafety-securitemaritime@tc.gc.ca](mailto:marinesafety-securitemaritime@tc.gc.ca) or 1-855-859-3123 (Toll Free).

**\*1005/22 Canadian Hydrographic Service – Canadian Tide and Current Tables –  
Volumes 1, 2, 5 and 7**

The following **Canadian Tide and Current Tables** volumes have recently been updated on the [Canadian Hydrographic Service website](#).

No.	Title
<b>Atlantic Coast</b>	
<b>Volume 1</b>	Atlantic Coast and Bay of Fundy
<b>Volume 2</b>	Gulf of St. Lawrence
<b>Pacific Coast</b>	
<b>Volume 5</b>	Juan de Fuca Strait and Strait of Georgia
<b>Volume 7</b>	Queen Charlotte Sound to Dixon Entrance

Each volume includes a section entitled “Record of Changes” which lists all updates that are incorporated during the current calendar year.

## Section 1A: Temporary and Preliminary Notices

### Reminder – Comment Period for Active Preliminary Notices

This is a reminder that the comment period is still open for the following active Preliminary notices:

Notice #	Reference Chart #	Aids Affected (LL #)	Intent of Notice
<b>Atlantic Coast</b>			
<a href="#">812(P)/22</a>	4203	522.1	Aid to Navigation to be Discontinued
<b>Inland Waters</b>			
<a href="#">814(P)/22</a>	6035	9327	Unlit Buoy to be Discontinued
<a href="#">815(P)/22</a>	6037	1442, 1443	Range Lights to be Discontinued
<a href="#">911(P)/22</a>	1550	1299	Aid to Navigation to be Discontinued
<b>Other Preliminary Notices</b>			
<a href="#">816(P)/22</a>		N/A	Raster Navigational Charts to be Discontinued
<a href="#">912(P)/22</a>		N/A	Differential Global Positioning System (DGPS) in Canada

Please refer to the [Notices to Mariners - Monthly Summary of Temporary and Preliminary Notices](#) publication for details.

## Newfoundland and Labrador Coast

### Temporary Notices

No notices applicable for this edition.

### Preliminary Notices

#### Atlantic Region

##### Comment Submission

Comments on proposed changes in preliminary (P) notices are solicited from mariners and other interested parties within three months of the initial publication date. Following this date, the notices will be cancelled. Any objections raised must state the facts on which they are based and should include supporting information on safety, commerce and public benefit.

Comments should be directed to the following:

Superintendent,  
Aids to Navigation & Waterways  
Canadian Coast Guard, Atlantic Region  
P.O. Box 1000  
50 Discovery Drive  
Dartmouth, NS B2Y 3Z8  
Telephone: (506) 636-4708  
Email: [DFO.CCGATLaidstoNavDiscont-AidesalanavSupprATLGCC.MPO@dfo-mpo.gc.ca](mailto:DFO.CCGATLaidstoNavDiscont-AidesalanavSupprATLGCC.MPO@dfo-mpo.gc.ca)

**\*1007(P)/22 Bacalhao Island to / à Black Island – Light Buoys to be Discontinued**

Reference chart: 4863

The Canadian Coast Guard proposes to permanently discontinue the following aids to navigation:

Aid Name	LL #	Position
Cottlesville light buoy DA2	355.11	49° 30' 27.5"N 054° 52' 26.4"W
Factory Island light buoy DA3	355.12	49° 30' 30.2"N 054° 52' 16.2"W
Black Rock light buoy DA5	355.129	49° 30' 32.0"N 054° 52' 05.6"W

Initial publication date: Friday, October 28, 2022

[Comment submission deadline](#): Thursday, January 26, 2023

(N2022-238)

**Atlantic Coast**

**Temporary Notices**

**\*1008(T)/22 Cap de la Tête au Chien au/to Cap aux Oies – Waterway Information: Shallow Depths Reported**

Reference chart: 1234

Shallower depths located at:

47° 55' 29.8"N 069° 38' 57.7"W (9.7 metres)  
47° 56' 58.4"N 069° 47' 24.2"W (3.2 metres)  
48° 00' 07.0"N 069° 45' 43.1"W (8.5 metres)

(NW-Q-1058-22)

**\*1009(T)/22 Plans, Baie des Chaleurs/Chaleur Bay (côte nord/North Shore) – Waterway Information: Shallow Depths Reported**

Reference chart: 4921

Shallower depths located at:

48° 24' 51.8"N 064° 23' 38.9"W (2.9 metres)  
48° 24' 52.7"N 064° 23' 41.9"W (2.9 metres)  
48° 24' 55.5"N 064° 23' 45.2"W (2.5 metres)  
48° 24' 53.7"N 064° 23' 43.7"W (2.6 metres)

(NW-Q-1485-22)

## Preliminary Notices

### Atlantic Region

#### Comment Submission

Comments on proposed changes in preliminary (P) notices are solicited from mariners and other interested parties within three months of the initial publication date. Following this date, the notices will be cancelled. Any objections raised must state the facts on which they are based and should include supporting information on safety, commerce and public benefit.

Comments should be directed to the following:

Superintendent,  
Aids to Navigation & Waterways  
Canadian Coast Guard, Atlantic Region  
P.O. Box 1000  
50 Discovery Drive  
Dartmouth, NS B2Y 3Z8  
Telephone: (506) 636-4708  
Email: [DFO.CCGATLAidstoNavDiscont-  
AidesalanavSupprATLGCC.MPO@dfo-mpo.gc.ca](mailto:DFO.CCGATLAidstoNavDiscont-AidesalanavSupprATLGCC.MPO@dfo-mpo.gc.ca)

### **\*1010(P)/22 Hillsborough Bay – Aid to Navigation to be Discontinued**

Reference chart: 4466

The Canadian Coast Guard proposes to permanently discontinue the following aid to navigation:

Aid Name	LL #	Position
St. Peters Island	1007	46° 07' 01.1"N 063° 10' 49.5"W

Initial publication date: Friday, October 28, 2022

**Comment submission deadline:** Thursday, January 26, 2023

(G2022-109)

## Inland Waters

No notices applicable for this edition.



## Section 2: Chart Corrections

**1313 - Batiscan au/to Lac Saint-Pierre - New Edition - 08-MAR-2019 - NAD 1983**  
28-OCT-2022

LNMD. 12-AUG-2022

Delete dredged channel  
(See Chart 1, I20) joining 46°20'00.8"N 072°32'38.2"W  
46°20'00.8"N 072°32'36.8"W  
46°20'05.6"N 072°32'33.1"W  
and 46°20'06.0"N 072°32'34.3"W

This notice affects Electronic Navigational Chart: CA479014, CA579015

*DFO(6410713-01)*

Add obstruction with known depth of 2 metres 8 decimetres  
(See Chart 1, K41) 46°18'41.5"N 072°32'49.3"W

This notice affects Electronic Navigational Chart: CA479014

*DFO(6410713-02)*

**1313 - Port de Trois-Rivières - New Edition - 08-MAR-2019 - NAD 1983**  
28-OCT-2022

LNMD. 12-AUG-2022

Delete depth of 3 metres 8 decimetres  
(See Chart 1, I10) 46°20'48.0"N 072°31'44.0"W

This notice affects Electronic Navigational Chart: CA579015

*DFO(6410683-01)*

Add depth of 3 metres 5 decimetres  
(See Chart 1, I10) 46°20'48.3"N 072°31'43.5"W

This notice affects Electronic Navigational Chart: CA579015

*DFO(6410683-02)*

Delete dredged channel with maintained depth of 11 metres  
(See Chart 1, I23) joining 46°20'00.8"N 072°32'38.2"W  
46°20'00.8"N 072°32'36.8"W  
46°20'05.6"N 072°32'33.1"W  
and 46°20'06.0"N 072°32'34.3"W

This notice affects Electronic Navigational Chart: CA479014, CA579015

*DFO(6410713-01)*

**1439 - Carleton Island to/au Charity Shoal - New Edition - 30-SEP-2020 - World Geodetic System 1984**  
21-OCT-2022

LNMD. 17-DEC-2021

Add red starboard hand lighted spar buoy FI R, marked J28  
(See Chart 1, Qb) 44°15'35.0"N 076°21'39.0"W

This notice affects Electronic Navigational Chart: CA473036

*(B2022092) LL(394.75) DFO(6604946-01)*

**1550 - Britannia Bay à/to Breckenridge - Sheet/Feuille 1 - New Edition - 27-MAY-2011 - NAD 1983**  
28-OCT-2022

LNMD. 14-OCT-2022

Delete depth of 7 feet  
(See Chart 1, I10) 45°22'56.8"N 075°52'26.7"W

*DFO(6604839-01)*

Add obstruction with known depth of 2 feet, Rep (2021)  
(See Chart 1, K41) 45°22'57.6"N 075°52'26.5"W

*DFO(6604839-02)*

**1550 - Breckenridge à/to Maclarens Landing - Sheet/Feuille 2 - New Edition - 27-MAY-2011 - NAD 1983**  
14-OCT-2022

LNMD. 14-AUG-2020

Delete front range/leading light F  
(See Chart 1, P20.2) 45°28'46.6"N 076°00'25.7"W

*(B2022089) LL(1300) DFO(6604944-01)*

Delete rear range/leading light F with leading line and bearing 121½° - 301½° between 45°28'40.9"N 076°00'12.4"W  
(See Chart 1 P20.2, Pa) and 45°30'01.6"N 076°03'20.0"W  
(B2022091) LL(1301) DFO(6604945-01)

**2067 - Hamilton Harbour - New Edition - 02-NOV-2018 - World Geodetic System 1984**

28-OCT-2022

LNM/D. 10-DEC-2021

Delete light, marked FI G 43°16'35.9"N 079°51'43.8"W  
(See Chart 1, P1)  
This notice affects Electronic Navigational Chart: CA573363  
(B2022001) LL(537.784) DFO(6604837-01)

Amend F G to read FI G (Priv) against light 43°16'40.8"N 079°51'41.1"W  
(See Chart 1, P16)  
This notice affects Electronic Navigational Chart: CA573363  
(B2022002) LL(537.782) DFO(6604838-01)

**2067 - Hamilton Yacht Clubs/Clubs nautiques de Hamilton - New Edition - 02-NOV-2018 - World Geodetic System 1984**

28-OCT-2022

LNM/D. 10-DEC-2021

Delete light, marked FI G 43°16'35.9"N 079°51'43.8"W  
(See Chart 1, P1)  
This notice affects Electronic Navigational Chart: CA573363  
(B2022001) LL(537.784) DFO(6604837-01)

Amend F G to read FI G (Priv) against light 43°16'40.8"N 079°51'41.1"W  
(See Chart 1, P16)  
This notice affects Electronic Navigational Chart: CA573363  
(B2022002) LL(537.782) DFO(6604838-01)

**2077 - Lake Ontario/Lac Ontario (Western Portion/Partie Ouest) - New Edition - 17-JUL-2020 - NAD 1983**

28-OCT-2022

LNM/D. 12-NOV-2021

Add water intake joining 43°36'25.3"N 079°22'47.1"W  
(See Chart 1, L41.1) 43°36'12.0"N 079°22'42.5"W  
and 43°35'44.4"N 079°21'17.3"W  
This notice affects Electronic Navigational Chart: CA373091, CA473519, CA573008  
DFO(6604941-01)

**2085 - Toronto Harbour - New Edition - 04-MAR-2011 - NAD 1983**

28-OCT-2022

LNM/D. 24-SEP-2021

Add water intake joining 43°36'25.3"N 079°22'47.1"W  
(See Chart 1, L41.1) 43°36'12.0"N 079°22'42.5"W  
and 43°35'44.4"N 079°21'17.3"W  
This notice affects Electronic Navigational Chart: CA373091, CA473519, CA573008  
DFO(6604941-01)

**2086 - Toronto to/à Hamilton - Sheet/Feuille 1 - New Edition - 24-MAY-2019 - World Geodetic System 1984**

28-OCT-2022

LNM/D. 13-MAY-2022

Add water intake joining 43°36'25.3"N 079°22'47.1"W  
(See Chart 1, L41.1) 43°36'12.0"N 079°22'42.5"W  
and 43°35'44.4"N 079°21'17.3"W  
This notice affects Electronic Navigational Chart: CA373091, CA473519, CA573008  
DFO(6604941-01)

**2202 - Port Severn to/à Penetang Harbour - Sheet/Feuille 1 - New Edition - 05-JAN-2007 - NAD 1983**

14-OCT-2022

LNM/D. 05-AUG-2022

Add Stump with drying height of 1 foot Rep (2022) 44°46'19.6"N 079°49'40.5"W  
(See Chart 1, K43.1)  
This notice affects Electronic Navigational Chart: CA473297  
DFO(6604891-01)

**2202 - Potato Island Channel - Sheet/Feuille 1 - New Edition - 05-JAN-2007 - NAD 1983**

14-OCT-2022

LNM/D. 05-AUG-2022

Reposition green port hand can buoy, marked C31/5 from 44°47'16.4"N 079°45'31.7"W  
(See Chart 1, Qc) to 44°47'16.6"N 079°45'31.5"W  
(D2022032) DFO(6604942-01)

Add red starboard hand conical buoy, marked C32/2 44°47'17.1"N 079°45'32.2"W  
(See Chart 1, Qb) (D2022033) DFO(6604943-01)

**2202 - Twelve Mile Bay to/à Rose Island - Sheet/Feuille 3 - New Edition - 05-JAN-2007 - NAD 1983**

14-OCT-2022

LNM/D. 05-AUG-2022

Add green port hand spar buoy, marked CM3 45°10'37.2"N 080°06'43.2"W  
(See Chart 1, Qc) (D2022026) DFO(6604891-02)

**2241 - Port Severn to/à Christian Island - New Chart - 30-JUL-1999 - NAD 1983**

14-OCT-2022

LNM/D. 01-APR-2022

Add Stump with drying height of 0.2 metres Rep (2022) 44°46'19.6"N 079°49'40.5"W  
(See Chart 1, K43.1)  
This notice affects Electronic Navigational Chart: CA473297  
DFO(6604891-01)

**4001 - Gulf of Maine to Strait of Belle Isle / au Detroit de Belle Isle - New Edition - 01-DEC-1995 - NAD 1983**

07-OCT-2022

LNM/D. 12-AUG-2022

Add private yellow ODAS/SADO lighted pillar buoy FI Y, (Priv) 40°40'21.1"N 070°13'07.8"W  
(See Chart 1, Q58) (USCG:30/2022) DFO(6310310-01)

Delete private yellow ODAS/SADO lighted pillar buoy FI Y, (Priv) 40°48'08.6"N 070°20'25.2"W  
(See Chart 1, Q58) (USCG:28/2022) DFO(6310310-02)

**4003 - Cape Breton to / à Cape Cod - New Edition - 21-MAR-2003 - NAD 1983**

07-OCT-2022

LNM/D. 12-AUG-2022

Add private yellow ODAS/SADO lighted pillar buoy FI Y, (Priv) 40°40'21.1"N 070°13'07.8"W  
(See Chart 1, Q58) (USCG:30/2022) DFO(6310310-01)

Delete private yellow ODAS/SADO lighted pillar buoy FI Y, (Priv) 40°48'08.6"N 070°20'25.2"W  
(See Chart 1, Q58) (USCG:28/2022) DFO(6310310-02)

Add Restricted area with legend 'Explos Rep (2022)' (Chart 1 N23.1b, I3.2) 41°04'02.0"N 070°26'28.0"W  
DFO(6310312-05)

<b>4006 - Newfoundland and Labrador/Terre-Neuve-et-Labrador to Bermuda / aux Bermudes - New Edition - 08-AUG-2003 - NAD 1983</b>		
07-OCT-2022		LNMD. 17-JUN-2022
Add	private yellow ODAS/SADO lighted pillar buoy FI Y, (Priv) (See Chart 1, Q58)	40°40'21.1"N 070°13'07.8"W <i>(USCG:30/2022) DFO(6310310-01)</i>
Delete	private yellow ODAS/SADO lighted pillar buoy FI Y, (Priv) (See Chart 1, Q58)	40°48'08.6"N 070°20'25.2"W <i>(USCG:28/2022) DFO(6310310-02)</i>
<b>4020 - Strait of Belle Isle / Détroit de Belle Isle - New Edition - 26-JUL-2002 - NAD 1983</b>		
14-OCT-2022		LNMD. 05-AUG-2022
Add	maritime limit in general implying: permanent physical obstructions (See Chart 1, N1.1)  This notice affects Electronic Navigational Chart: CA376094	joining 51°33'10.7"N 055°25'25.4"W 51°34'54.1"N 055°13'19.3"W and 51°35'56.7"N 055°07'11.0"W  <i>DFO(6310321-01)</i>
Add	note: SCIENTIFIC MOORINGS Acoustic sensors, one metre high and positioned approximately 750 metres apart, along the line, directly on the seabed. Mariners are advised to avoid anchoring or conducting seabed operations in the vicinity of submarine moorings.  MOUILLAGES SCIENTIFIQUES Des capteurs acoustiques, d'une hauteur d'un mètre et positionnés à intervalles d'environ 750 mètres le long de la ligne, reposent directement sur le fond marin. Nous avisons les navigateurs d'éviter de mouiller ou d'effectuer des travaux sur le fond marin à proximité de ces mouillages sous-marins.	51°59'39.0"N 056°36'57.0"W  <i>DFO(6310321-02)</i>
Add	See/Voir note SCIENTIFIC MOORINGS MOUILLAGES SCIENTIFIQUES (See Chart 1, A14) This notice affects Electronic Navigational Chart: CA376094	51°34'26.0"N 055°13'31.0"W  <i>DFO(6310321-05)</i>
<b>4022 - Cabot Strait and approaches / Détroit de Cabot et les approches - New Edition - 17-JAN-2003 - NAD 1983</b>		
07-OCT-2022		LNMD. 29-JUL-2022
Delete	light F R (See Chart 1, P1)	47°33'30.0"N 061°33'44.0"W  <i>(Q2021049) LL(1484) DFO(6310322-01)</i>
<b>4116 - Approaches to / Approches à Saint John - New Edition - 31-AUG-2007 - NAD 1983</b>		
28-OCT-2022		LNMD. 22-OCT-2021
Add	depth of 0.6 metres (See Chart 1, I10)	45°16'24.1"N 066°07'59.5"W  <i>DFO(6310325-02)</i>
Replace	depth of 4.6 metres with depth of 2.6 metres (See Chart 1, I10) This notice affects Electronic Navigational Chart: CA376011	45°16'54.8"N 066°07'59.6"W  <i>DFO(6310325-11)</i>
Add	depth of 1.7 metres (See Chart 1, I10)	45°16'41.0"N 066°08'04.4"W  <i>DFO(6310325-12)</i>

Delete	underwater rock of unknown depth, dangerous to surface navigation with legend Rep (2020) (See Chart 1, K13) This notice affects Electronic Navigational Chart: CA376011	45°20'13.0"N 066°02'56.0"W  <i>DFO(6310326-12)</i>
Add	rock which covers and uncovers with drying height of 0.5 metres (See Chart 1, K11) This notice affects Electronic Navigational Chart: CA376011	45°20'13.3"N 066°02'56.2"W  <i>DFO(6310326-13)</i>
Add	rock which covers and uncovers with drying height of 1.6 metres (See Chart 1, K11) This notice affects Electronic Navigational Chart: CA376011	45°18'30.9"N 066°06'54.5"W  <i>DFO(6310327-03)</i>
Delete	wharf under construction (See Chart 1, F32)  This notice affects Electronic Navigational Chart: CA376011, CA576005	joining 45°15'57.2"N 066°04'01.7"W 45°15'57.6"N 066°04'00.5"W 45°16'04.6"N 066°04'13.6"W and 45°16'03.6"N 066°04'14.2"W  <i>DFO(6310329-01)</i>
Add	wharf under construction (See Chart 1, F32)  This notice affects Electronic Navigational Chart: CA376011, CA576005	joining 45°15'57.2"N 066°04'01.7"W 45°16'04.5"N 066°04'13.4"W and 45°16'03.7"N 066°04'14.5"W  <i>DFO(6310329-02)</i>
<b>4117 - Saint John Harbour and Approaches / et les approches - New Edition - 29-MAY-2009 - NAD 1983</b>		
28-OCT-2022		LNM/D. 07-MAY-2021
Delete	wharf under construction (See Chart 1, F32)  This notice affects Electronic Navigational Chart: CA376011, CA576005	joining 45°15'57.2"N 066°04'01.7"W 45°15'57.6"N 066°04'00.5"W 45°16'04.6"N 066°04'13.6"W and 45°16'03.6"N 066°04'14.2"W  <i>DFO(6310329-01)</i>
Add	wharf under construction (See Chart 1, F32)  This notice affects Electronic Navigational Chart: CA376011, CA576005	joining 45°15'57.2"N 066°04'01.7"E 45°16'04.5"N 066°04'13.4"W and 45°16'03.8"N 066°04'14.6"W  <i>DFO(6310329-02)</i>
Add	pier (See Chart 1, F14) This notice affects Electronic Navigational Chart: CA576005	between 45°16'23.9"N 066°04'05.2"W and 45°16'24.1"N 066°04'02.7"W  <i>DFO(6310329-03)</i>
<b>4141 - Saint John to / à Grand Bay including / y compris Kennebecasis River - Sheet / Feuille A-B - New Edition - 30-OCT-2009 - NAD 1983</b>		
28-OCT-2022		LNM/D. 22-OCT-2021
Delete	depth of 3.7 metres (See Chart 1, I10)	45°16'24.1"N 066°07'56.5"W  <i>DFO(6310325-01)</i>
Add	depth of 0.6 metres (See Chart 1, I10)	45°16'24.1"N 066°07'59.5"W  <i>DFO(6310325-02)</i>

Delete	depth of 4 metres (See Chart 1, I10)	45°16'31.7"N 066°07'55.9"W <i>DFO(6310325-03)</i>
Add	depth of 1 metre (See Chart 1, I10)	45°16'33.4"N 066°07'56.7"W <i>DFO(6310325-04)</i>
Delete	obstruction, depth unknown with legend Rep (2021) (See Chart 1, K40, I3.2)	45°16'38.1"N 066°07'54.0"W <i>DFO(6310325-05)</i>
Add	depth of 3.9 metres (See Chart 1, I10)	45°16'49.7"N 066°07'59.4"W <i>DFO(6310325-06)</i>
Add	rock which covers and uncovers with drying height of 1.0 metre (See Chart 1, K11)	45°16'38.1"N 066°07'54.0"W <i>DFO(6310325-07)</i>
Delete	depth of 4.3 metres (See Chart 1, I10)	45°16'37.0"N 066°07'56.1"W <i>DFO(6310325-08)</i>
Replace	depth of 4.9 metres with depth of 1.6 metres (See Chart 1, I10)	45°16'42.2"N 066°07'55.2"W <i>DFO(6310325-09)</i>
Delete	depth of 8.2 metres (See Chart 1, I10)	45°16'49.0"N 066°07'58.5"W <i>DFO(6310325-10)</i>
Replace	depth of 4.6 metres with depth of 2.6 metres (See Chart 1, I10) This notice affects Electronic Navigational Chart: CA376011	45°16'54.8"N 066°07'59.6"W <i>DFO(6310325-11)</i>
Add	depth of 1.7 metres (See Chart 1, I10)	45°16'41.0"N 066°08'04.4"W <i>DFO(6310325-12)</i>
Add	depth of 1.4 metres (See Chart 1, I10)	45°16'36.6"N 066°08'01.7"W <i>DFO(6310325-13)</i>
Delete	depth of 3.4 metres (See Chart 1, I10)	45°19'59.1"N 066°02'09.4"W <i>DFO(6310326-01)</i>
Add	drying height of 0.6 metres (See Chart 1, I15)	45°19'58.8"N 066°02'06.8"W <i>DFO(6310326-02)</i>
Delete	depth of 8.2 metres (See Chart 1, I10)	45°20'00.0"N 066°02'14.7"W <i>DFO(6310326-03)</i>
Add	depth of 5.5 metres (See Chart 1, I10)	45°19'57.6"N 066°02'14.5"W <i>DFO(6310326-04)</i>

Add	drying height of 0.7 metres (See Chart 1, I15)	45°20'01.4"N 066°02'17.7"W <i>DFO(6310326-05)</i>
Add	depth of 11 metres (See Chart 1, I10)	45°20'04.2"N 066°02'20.2"W <i>DFO(6310326-06)</i>
Delete	depth of 3.5 metres (See Chart 1, I10)	45°20'10.2"N 066°02'17.5"W <i>DFO(6310326-07)</i>
Add	depth of 1.8 metres (See Chart 1, I10)	45°20'11.4"N 066°02'20.5"W <i>DFO(6310326-08)</i>
Replace	depth of 25.6 metres with depth of 22.7 metres (See Chart 1, I10)	45°20'15.4"N 066°02'28.9"W <i>DFO(6310326-09)</i>
Delete	depth of 15.2 metres (See Chart 1, I10)	45°20'14.8"N 066°02'50.8"W <i>DFO(6310326-10)</i>
Add	depth of 13.9 metres (See Chart 1, I10)	45°20'15.3"N 066°02'52.6"W <i>DFO(6310326-11)</i>
Delete	underwater rock of unknown depth, dangerous to surface navigation with legend Rep (2020) (See Chart 1, K13) This notice affects Electronic Navigational Chart: CA376011	45°20'13.0"N 066°02'56.0"W <i>DFO(6310326-12)</i>
Add	rock which covers and uncovers with drying height of 0.5 metres (See Chart 1, K11) This notice affects Electronic Navigational Chart: CA376011	45°20'13.3"N 066°02'56.2"W <i>DFO(6310326-13)</i>
Replace	depth of 4 metres with depth of 2.8 metres (See Chart 1, I10)	45°18'34.6"N 066°06'53.6"W <i>DFO(6310327-01)</i>
Delete	underwater rock of unknown depth, dangerous to surface navigation with legend Rep (1985) (See Chart 1, I3.2, K13)	45°18'31.3"N 066°06'55.0"W <i>DFO(6310327-02)</i>
Add	rock which covers and uncovers with drying height of 1.6 metres (See Chart 1, K11) This notice affects Electronic Navigational Chart: CA376011	45°18'30.9"N 066°06'54.5"W <i>DFO(6310327-03)</i>
Replace	depth of 1 metre with depth of 0.1 metres (See Chart 1, I10)	45°18'27.1"N 066°06'54.6"W <i>DFO(6310327-04)</i>
Replace	depth of 4.8 metres with depth of 2.8 metres (See Chart 1, I10)	45°18'26.5"N 066°07'01.0"W <i>DFO(6310327-05)</i>

Replace	depth of 41 metres with depth of 36 metres (See Chart 1, I10)	45°22'07.6"N 066°04'18.3"W  DFO(6310328-01)
Delete	wreck, least depth unknown PA, with legend Rep (2021) (See Chart 1, K29, B7, I3)	45°22'06.0"N 066°04'11.9"W  DFO(6310328-02)
Add	wreck Wk with known depth of 38 metres (See Chart 1, K26)	45°22'04.6"N 066°04'09.8"W  DFO(6310328-03)
<b>4592 - Little Bay Island to / à League Rock - New Edition - 10-OCT-2003 - NAD 1983</b> 28-OCT-2022		LNMD. 12-NOV-2021
Delete	yellow, black and yellow West cardinal lighted spar buoy Q(9) 15s, marked DBB (See Chart 1, Q130.3) This notice affects Electronic Navigational Chart: CA376656	49°37'36.9"N 055°48'20.5"W  DFO(6310330-01)
Add	black, yellow and black East cardinal lighted spar buoy Q(3) 10s marked DNC (See Chart 1, Q130.3) This notice affects Electronic Navigational Chart: CA376656	49°32'44.5"N 055°36'23.6"W  DFO(6310330-02)
<b>4619 - Presque Harbour to / à Bar Haven Island and / et Paradise Sound - New Edition - 20-NOV-1998 - NAD 1983</b> 21-OCT-2022		LNMD. 24-JUN-2022
Add	light FI Y 5s4M (See Chart 1, P1) This notice affects Electronic Navigational Chart: CA476079	47°38'09.1"N 054°20'24.5"W  (N2022138) LL(44.09) DFO(6310232-01)
Add	pier (See Chart 1, F14)  This notice affects Electronic Navigational Chart: CA476079	joining 47°38'10.2"N 054°20'26.3"W 47°38'09.3"N 054°20'25.1"W and 47°38'09.1"N 054°20'24.5"W  DFO(6310232-03)
<b>4643 - Île Saint-Pierre (France) - New Edition - 28-MAR-2003 - NAD 1983</b> 14-OCT-2022		LNMD. 17-JUL-2020
Add	pier (See Chart 1, F14)	between 46°47'34.2"N 056°09'42.1"W and 46°47'32.6"N 056°09'39.6"W DFO(6310324-01)
Add	pier (See Chart 1, F14)	between 46°47'34.2"N 056°09'37.3"W and 46°47'31.0"N 056°09'41.9"W DFO(6310324-02)
<b>4701 - Ship Harbour Head to / aux Camp Islands - New Edition - 13-DEC-2002 - NAD 1983</b> 14-OCT-2022		LNMD. 05-AUG-2022
Add	maritime limit in general implying: permanent physical obstructions (See Chart 1, N1.1)  This notice affects Electronic Navigational Chart: CA476380	joining 52°26'58.4"N 055°37'31.1"W 52°28'42.7"N 055°28'51.8"W and 52°31'54.2"N 055°14'56.0"W  DFO(6310321-03)



Add	<p>note: SCIENTIFIC MOORINGS Acoustic sensors, one metre high and positioned approximately 750 metres apart, along the line, directly on the seabed. Mariners are advised to avoid anchoring or conducting seabed operations in the vicinity of submarine moorings.</p> <p>MOUILLAGES SCIENTIFIQUES Des capteurs acoustiques, d'une hauteur d'un mètre et positionnés à intervalles d'environ 750 mètres le long de la ligne, reposent directement sur le fond marin. Nous avisons les navigateurs d'éviter de mouiller ou d'effectuer des travaux sur le fond marin à proximité de ces mouillages sous-marins.</p>	52°28'49.0"N 056°11'43.0"W
		<i>DFO(6310321-04)</i>
Add	<p>See/Voir note SCIENTIFIC MOORINGS MOUILLAGES SCIENTIFIQUES (See Chart 1, A14) This notice affects Electronic Navigational Chart: CA476380</p>	52°29'40.0"N 055°23'42.0"W
		<i>DFO(6310321-06)</i>
<b>4731 - Forteau Bay to / à Domino Run - New Edition - 13-JUN-2003 - Unknown</b>		
14-OCT-2022		LNM/D. 19-AUG-2022
Add	<p>maritime limit in general implying: permanent physical obstructions (See Chart 1, N1.1)</p> <p>This notice affects Electronic Navigational Chart: CA376094</p>	<p>joining 51°33'10.7"N 055°25'25.4"W 51°34'54.1"N 055°13'19.3"W and 51°35'56.7"N 055°07'11.0"W</p>
		<i>DFO(6310321-01)</i>
Add	<p>note: SCIENTIFIC MOORINGS Acoustic sensors, one metre high and positioned approximately 750 metres apart, along the line, directly on the seabed. Mariners are advised to avoid anchoring or conducting seabed operations in the vicinity of submarine moorings.</p> <p>MOUILLAGES SCIENTIFIQUES Des capteurs acoustiques, d'une hauteur d'un mètre et positionnés à intervalles d'environ 750 mètres le long de la ligne, reposent directement sur le fond marin. Nous avisons les navigateurs d'éviter de mouiller ou d'effectuer des travaux sur le fond marin à proximité de ces mouillages sous-marins.</p>	52°47'52.0"N 056°33'47.0"W
		<i>DFO(6310321-02)</i>
Add	<p>maritime limit in general implying: permanent physical obstructions (See Chart 1, N1.1)</p> <p>This notice affects Electronic Navigational Chart: CA476380</p>	<p>joining 52°26'58.4"N 055°37'31.1"W 52°28'42.7"N 055°28'51.8"W and 52°32'29.5"N 055°12'22.1"W</p>
		<i>DFO(6310321-03)</i>
Add	<p>See/Voir note SCIENTIFIC MOORINGS MOUILLAGES SCIENTIFIQUES (See Chart 1, A14) This notice affects Electronic Navigational Chart: CA376094</p>	51°35'45.0"N 055°14'53.0"W
		<i>DFO(6310321-05)</i>
Add	<p>See/Voir note SCIENTIFIC MOORINGS MOUILLAGES SCIENTIFIQUES (See Chart 1, A14) This notice affects Electronic Navigational Chart: CA476380</p>	52°28'32.0"N 055°22'10.0"W
		<i>DFO(6310321-06)</i>
<b>4820 - Cape Freels to / à Exploits Islands - New Chart - 01-JUL-2005 - NAD 1983</b>		
07-OCT-2022		LNM/D. 12-AUG-2022
Add	<p>light Fl 6s4M (See Chart 1, P1) This notice affects Electronic Navigational Chart: CA376655, CA476803</p>	49°27'22.5"N 054°53'04.1"W
		<i>(N2022141) LL(354.5) DFO(6310235-01)</i>

Amend	FI 6s to read LFI 6s against light (See Chart 1, P16) This notice affects Electronic Navigational Chart: CA376655, CA476719	49°45'06.8"N 054°09'11.9"W  (N2022169) LL(384) DFO(6310277-01)
<b>4821 - White Bay and / et Notre Dame Bay - New Chart - 23-APR-2004 - NAD 1983</b>		
07-OCT-2022		LNMD. 11-FEB-2022
Add	light FI 6s4M (See Chart 1, P1) This notice affects Electronic Navigational Chart: CA376655, CA476803	49°27'22.5"N 054°53'04.1"W  (N2022141) LL(354.5) DFO(6310235-01)
28-OCT-2022		LNMD. 07-OCT-2022
Delete	yellow, black and yellow West cardinal lighted spar buoy Q(9) 15s, marked DBB (See Chart 1, Q130.3) This notice affects Electronic Navigational Chart: CA376656	49°37'39.6"N 055°48'19.5"W  DFO(6310330-01)
<b>4839 - Head of / Fond de Placentia Bay - New Edition - 28-JAN-2011 - NAD 1983</b>		
21-OCT-2022		LNMD. 24-JUN-2022
Add	light FI Y 5s4M (See Chart 1, P1) This notice affects Electronic Navigational Chart: CA476079	47°38'09.1"N 054°20'24.5"W  (N2022138) LL(44.09) DFO(6310232-01)
Delete	pier in ruins with legend Ru (See Chart 1, F33) This notice affects Electronic Navigational Chart: CA476079	between 47°38'10.8"N 054°20'26.7"W and 47°38'09.9"N 054°20'25.5"W  DFO(6310232-02)
Add	pier with legend Public (See Chart 1, F14)  This notice affects Electronic Navigational Chart: CA476079	joining 47°38'10.2"N 054°20'26.3"W 47°38'09.3"N 054°20'25.1"W and 47°38'09.1"N 054°20'24.5"W  DFO(6310232-03)
<b>4846 - Motion Bay to / à Cape St Francis - New Edition - 15-DEC-1995 - NAD 1983</b>		
14-OCT-2022		LNMD. 10-DEC-2021
Reposition	private yellow ODAS/SADO lighted pillar buoy FI(5) Y 20s, Priv (See Chart 1, Q58) This notice affects Electronic Navigational Chart: CA276101, CA376015	from 47°34'00.1"N 052°37'32.4"W to 47°33'59.8"N 052°37'54.7"W  DFO(6310320-01)
<b>4861 - Fogo Island Northern Portion - New Chart - 26-APR-2019 - NAD 1983</b>		
07-OCT-2022		LNMD. 23-SEP-2022
Amend	FI 6s30m5M to read LFI 6s30m5M against light (See Chart 1, P16) This notice affects Electronic Navigational Chart: CA376655, CA476719	49°45'06.8"N 054°09'11.9"W  (N2022169) LL(384) DFO(6310277-01)

**4863 - Bacalhao Island to / à Black Island - New Edition - 30-NOV-2001 - NAD 1983**

07-OCT-2022

LNMD. 23-SEP-2022

- Add light FI R 49°30'44.9"N 054°52'01.2"W  
(See Chart 1, P1)  
This notice affects Electronic Navigational Chart: CA476803  
*(N2022139) LL(355.131) DFO(6310233-01)*
- Add light FI R 49°24'23.4"N 054°51'17.4"W  
(See Chart 1, P1)  
This notice affects Electronic Navigational Chart: CA476802  
*(N2022140) LL(353.91) DFO(6310234-01)*
- Add light FI 6s4M 49°27'22.5"N 054°53'04.1"W  
(See Chart 1, P1)  
This notice affects Electronic Navigational Chart: CA376655, CA476803  
*(N2022141) LL(354.5) DFO(6310235-01)*
- Add green port hand spar buoy, marked DBT5 49°32'01.5"N 054°58'25.8"W  
(See Chart 1, Qc)  
This notice affects Electronic Navigational Chart: CA476639, CA576601  
*(N2022161) LL(361.065) DFO(6310254-01)*

**4864 - Black Island to / à Little Denier Island - New Chart - 25-AUG-2006 - NAD 1983**

07-OCT-2022

LNMD. 12-AUG-2022

- Add green port hand spar buoy, marked DBT5 49°32'01.5"N 054°58'25.8"W  
(See Chart 1, Qc)  
This notice affects Electronic Navigational Chart: CA476639, CA576601  
*(N2022161) LL(361.065) DFO(6310254-01)*

**4955 - Havre-aux-Maisons - New Edition - 15-JUN-2018 - NAD 1983**

07-OCT-2022

LNMD. 10-JUN-2022

- Reposition red starboard hand lighted conical buoy FI R, marked YE14 47°24'14.0"N 061°50'23.9"W  
(See Chart 1, Q20, Qb)  
This notice affects Electronic Navigational Chart: CA579211  
*(Q2022044) LL(1494.92) DFO(6410706-01)*

**4956 - Cap-aux-Meules - New Edition - 02-SEP-2011 - NAD 1983**

14-OCT-2022

LNMD. 29-OCT-2021

- Delete depth of 4 metres 2 decimetres 47°22'34.4"N 061°51'15.1"W  
(See Chart 1, I10)  
This notice affects Electronic Navigational Chart: CA579046  
*DFO(6410674-01)*
- Add depth of 3 metres 7 decimetres 47°22'34.6"N 061°51'15.8"W  
(See Chart 1, I10)  
This notice affects Electronic Navigational Chart: CA579046  
*DFO(6410674-02)*
- Delete depth of 2 metres 5 decimetres 47°22'39.1"N 061°51'06.4"W  
(See Chart 1, I10)  
This notice affects Electronic Navigational Chart: CA579046  
*DFO(6410674-03)*
- Add depth of 2 metres 0 decimetres 47°22'40.0"N 061°51'06.4"W  
(See Chart 1, I10)  
This notice affects Electronic Navigational Chart: CA579046  
*DFO(6410674-04)*

Delete	depth of 6 metres 8 decimetres (See Chart 1, I10) This notice affects Electronic Navigational Chart: CA579046	47°22'48.2"N 061°51'12.5"W  <i>DFO(6410674-05)</i>
Add	depth of 6 metres 5 decimetres (See Chart 1, I10) This notice affects Electronic Navigational Chart: CA579046	47°22'48.1"N 061°51'12.4"W  <i>DFO(6410674-06)</i>
Delete	depth of 8 metres 4 decimetres (See Chart 1, I10) This notice affects Electronic Navigational Chart: CA579046	47°22'45.9"N 061°51'10.2"W  <i>DFO(6410674-07)</i>
Add	depth of 7 metres 9 decimetres (See Chart 1, I10) This notice affects Electronic Navigational Chart: CA579046	47°22'45.9"N 061°51'10.2"W  <i>DFO(6410674-08)</i>
Delete	depth of 2 metres 6 decimetres (See Chart 1, I10) This notice affects Electronic Navigational Chart: CA579046	47°22'44.2"N 061°51'25.7"W  <i>DFO(6410674-10)</i>
Add	depth of 2 metres 0 decimetres (See Chart 1, I10) This notice affects Electronic Navigational Chart: CA579046	47°22'44.2"N 061°51'25.9"W  <i>DFO(6410674-11)</i>
Delete	depth of 7 metres 8 decimetres (See Chart 1, I10) This notice affects Electronic Navigational Chart: CA579046	47°22'47.5"N 061°51'11.9"W  <i>DFO(6410674-12)</i>
Add	depth of 2 metres 8 decimetres (See Chart 1, I10) This notice affects Electronic Navigational Chart: CA579046	47°22'44.7"N 061°51'21.6"W  <i>DFO(6410674-13)</i>
Add	jetty (See Chart 1, F14)  This notice affects Electronic Navigational Chart: CA579046	joining 47°22'45.3"N 061°51'26.2"W 47°22'45.3"N 061°51'24.1"W 47°22'46.0"N 061°51'24.1"W and 47°22'46.0"N 061°51'26.2"W  <i>DFO(6410674-14)</i>

**5031 - Mary's Harbour - New Edition - 31-DEC-1999 - NAD 1983**  
28-OCT-2022

LNM/D. 14-OCT-2022

Add	breakwater with legend Bkw (See Chart 1, F4.1)  This notice affects Electronic Navigational Chart: CA576503	joining 52°18'47.2"N 055°50'17.8"W 52°18'45.5"N 055°50'14.6"W and 52°18'46.4"N 055°50'10.7"W  <i>DFO(6310323-01)</i>
Delete	pontoon (See Chart 1, F16) This notice affects Electronic Navigational Chart: CA576503	between 52°18'48.3"N 055°50'13.1"W and 52°18'47.8"N 055°50'12.7"W  <i>DFO(6310323-02)</i>

---

Add	pontoon (See Chart 1, F16) This notice affects Electronic Navigational Chart: CA576503	between 52°18'48.4"N 055°50'13.2"W and 52°18'47.3"N 055°50'12.4"W	<i>DFO(6310323-03)</i>
<b>5031 - St Lewis Sound and / et Inlet - New Edition - 31-DEC-1999 - NAD 1983</b> 14-OCT-2022			LN/D. 03-DEC-2021
Add	maritime limit in general implying: permanent physical obstructions (See Chart 1, N1.1) This notice affects Electronic Navigational Chart: CA476380	between 52°26'58.4"N 055°37'31.1"W and 52°28'00.0"N 055°32'23.3"W	<i>DFO(6310321-03)</i>
Add	note: SCIENTIFIC MOORINGS Acoustic sensors, one metre high and positioned approximately 750 metres apart, along the line, directly on the seabed. Mariners are advised to avoid anchoring or conducting seabed operations in the vicinity of submarine moorings.  MOUILLAGES SCIENTIFIQUES Des capteurs acoustiques, d'une hauteur d'un mètre et positionnés à intervalles d'environ 750 mètres le long de la ligne, reposent directement sur le fond marin. Nous avisons les navigateurs d'éviter de mouiller ou d'effectuer des travaux sur le fond marin à proximité de ces mouillages sous-marins.	52°13'11.0"N 055°50'09.0"W	<i>DFO(6310321-04)</i>
Add	See/Voir note SCIENTIFIC MOORINGS MOUILLAGES SCIENTIFIQUES (See Chart 1, A14) This notice affects Electronic Navigational Chart: CA476380	52°27'28.0"N 055°34'21.0"W	<i>DFO(6310321-06)</i>

### **Section 3: Radio Aids to Marine Navigation Corrections**

---

No corrections for this section.

## Section 4: Canadian Sailing Directions Corrections

---

The following **Canadian Sailing Directions** volumes have recently been updated on the [Canadian Hydrographic Service website](#).

No.	Title
<b>Atlantic Coast</b>	
<b>ATL111</b>	St. Lawrence River, Île Verte to Québec and Fjord du Saguenay
<b>ATL112</b>	St. Lawrence River, Cap-Rouge to Montréal and Rivière Richelieu
<b>Central Canada</b>	
<b>CEN308</b>	Rideau Canal and Ottawa River

Each volume includes a section entitled “Record of Changes” which lists all updates that are incorporated during the current calendar year.

## Section 5: List of Lights, Buoys and Fog Signals Corrections

The amendments are highlighted and deletions are crossed out. For general and region-specific information on the List of Lights, click on the following links: [Newfoundland and Labrador Coast](#), [Atlantic Coast](#), [Inland Waters](#) and [Pacific Coast](#).

No.	Name	Position ----- Latitude N. Longitude W.	Light Characteristics	Focal Height in m. above water	Nomi- nal Range	Description ----- Height in meters above ground	Remarks ----- Fog Signals
-----	------	--	--------------------------	--	-----------------------	--	---------------------------------

### NEWFOUNDLAND AND LABRADOR COAST

#### PLACENTIA BAY (LL 14.4 – 79)

44.09	Davis Cove Wharf Light	47 38 09.1 054 20 24.5	Fl Y 5s	.....	4	Pipe tower.	Flash 1 s; eclipse 4 s. Operates 24 h. Year round.  Chart:4839 Edn 10/22 (N22-138)
-------	---------------------------	---------------------------	---------	-------	---	-------------	---

#### NOTRE DAME BAY (LL 326 – 395)

326.11 H0684	Round Harbour Wharf Light	49 51 10.1 055 39 22.5	Fl G 5s	4.1	3	Skeleton Mast.	Flash 1 s; eclipse 4 s. Operates 24 h. Seasonal.  Chart:4821 Edn 10/22 (N22-173)
353.91	Loon Bay Breakwater Light	49 24 23.7 054 51 16.6	Fl R 5s	.....	2	Pipe tower.	Flash 1 s; eclipse 4 s. Operates 24 h. Seasonal.  Chart:4863 Edn 10/22 (N22-140)
354.5	Gleed Island Light	49 27 22.5 054 53 04.1	Fl W 6s	.....	4	Square skeleton tower, red and white rectangular daymark.	Flash 1 s; eclipse 5 s. Operates 24 h. Seasonal.  Chart:4863 Edn 10/22 (N22-141)
355.131	Cottlesville Wharf Light	49 30 44.9 054 52 01.2	Fl R 5s	.....	2	Pipe tower.	Flash 1 s; eclipse 4 s. Operates 24 h. Seasonal.  Chart:4863 Edn 10/22 (N22-139)
357 H0650	Moreton's Harbour Light	49 34 51.7 054 51 35.8	Fl W 4s	18.0	5	Square skeleton tower, red rectangular daymark with white band. 4.6	Flash 1 s; eclipse 3 s. Seasonal.  Chart:4863 Edn 10/22 (N22-171)
363.5 H0624.5	Barrack's Island Light	49 47 52.0 054 00 04.7	Fl W 6s	10.0	5	Square skeleton tower, red and white rectangular daymark. 4.3	Flash 1 s; eclipse 5 s. Seasonal.  Chart:4861 Edn 10/22 (N22-167)
383.6 H0617.5	Joe Batt's Arm Wharf Light	Fogo Island. 49 43 32.9 054 10 05.3	Fl R 4s	3.5	4	Cylindrical Mast. 2.4	Flash 1 s; eclipse 3 s. Seasonal.  Chart:4861 Edn 10/22 (N22-177)



Notices to Mariners – Monthly Eastern Edition  
Section 5: List of Lights, Buoys and Fog Signals Corrections

No.	Name	Position ----- Latitude N. Longitude W.	Light Characteristics	Focal Height in m. above water	Nomi- nal Range	Description ----- Height in meters above ground	Remarks ----- Fog Signals
384 <b>H0616</b>	Joe Batt's Point Light	<b>Joe Batt's Arm, Fogo Island.</b> 49 45 06.8 054 09 11.9	Fl W 6s	29.6	5	Square skeleton tower, red and white rectangular daymark.  4.3	Flash 2 s; eclipse 4 s. Seasonal.  Chart:4820 <b>Edn 10/22 (N22-169)</b>

**ATLANTIC COAST**

**GULF OF ST. LAWRENCE (LL 1169.1 – 1426, 1477.5 – 1584)**

1494.92	Havre-aux- Maisons light buoy YE14	47 24 14.0 061 50 23.9	Fl R 4s	.....	.....	Red, marked "YE14".	Seasonal.  Chart:4955 <b>Edn 10/22 (Q22-044)</b>
---------	--	---------------------------	---------	-------	-------	---------------------	---

**ST. LAWRENCE RIVER (LL 1584.5 – 1772, 1823.8 – 2185.7, 2273 – 2365.95)**

2284	Courbe de Bellmouth light buoy M19	<b>Contrecoeur.</b> 45 54 23.3 073 12 51.7	Fl G 4s	.....	.....	Green spar, marked "M19".	Year round.  Chart:1311 <b>Edn 10/22 (Q22-051)</b>
2286.5	Courbe de Bellmouth light buoy M23	<b>Contrecoeur.</b> 45 54 09.0 073 13 06.9	Fl G 4s	.....	.....	Green spar, marked "M23".	Year round.  Chart:1311 <b>Edn 10/22 (Q22-052)</b>
2294.2	Route de Contrecoeur light buoy M32	<b>Îles de Contrecoeur.</b> 45 53 27.4 073 14 24.3	Fl R 4s	.....	.....	Red spar, marked "M32".	Year round.  Chart:1311 <b>Edn 10/22 (Q22-054)</b>
2313.1	Traverse de Contrecoeur light buoy M51	<b>Îles de Contrecoeur.</b> 45 50 48.3 073 16 20.4	Q G 1s	.....	.....	Green spar, marked "M51".	Year round.  Chart:1311 <b>Edn 10/22 (Q22-053)</b>

**INLAND WATERS**

**ST. LAWRENCE RIVER SEAWAY (LL 0.05 - 401, 1193 – 1204.5)**

362	Wood Island	On small island near Wood island. 44 21 35.9 075 59 30.9	Fl R 4s	7.3	3	White rectangular tower with red upper portion.  6.1	Seasonal.  Chart:1437 <b>Edn 10/22 (B22-093)</b>
394.75	Bateau Channel light buoy J28	44 15 35.0 076 21 39.0	Fl R 4s	.....	.....	Red spar, marked "J28".	Seasonal (in place year round).  Chart:1438 <b>Edn 10/22 (B22-092)</b>

**LAKE ONTARIO (LL 403.4 – 551)**

537.782	Hamilton Harbour Centennial Dock Northwest	43 16 40.8 079 51 41.1	Fl G 4s	5.4	.....	.....	Private aid. Seasonal.  Chart:2067 <b>Edn 10/22 (B22-002)</b>
---------	--	---------------------------	---------	-----	-------	-------	---

Notices to Mariners – Monthly Eastern Edition  
Section 5: List of Lights, Buoys and Fog Signals Corrections

No.	Name	Position ----- Latitude N. Longitude W.	Light Characteristics	Focal Height in m. above water	Nomi- nal Range	Description ----- Height in meters above ground	Remarks ----- Fog Signals
-----	------	--	--------------------------	--	-----------------------	--	---------------------------------

**LAKE SUPERIOR (LL 1082 – 1161)**

1138	Mission River Entrance Breakwater	On inner end of breakwater. 48 21 14.1 089 13 01.7	FI G 4s	6.4	5	Cylindrical mast, red and white rectangular daymark with black square in centre. 4.9	Flash 0.5 s; eclipse 3.5 s. Seasonal.  Chart:2314 Edn 10/22 (D22-035)
------	---	---	---------	-----	---	---	---

**OTTAWA RIVER (LL 1233.3 – 1322)**

1300	Baskin's Beach range						Delete from list.
1301							Delete from list.  Chart:1550 Edn 10/22 (B22-089, 091)

**LAKE OF THE WOODS (LL 1470 – 1514.9)**

1512	Burton Island	On W. point of island. 48 56 59.0 094 37 00.0	FI W 4s	9.2	6	Mast, green and white rectangular daymark, green square in centre. 6.4	Seasonal.  Chart:6211 Edn 10/22 (D22-006)
------	---------------	--	---------	-----	---	---	--