



Fisheries and Oceans
Canada

Pêches et Océans
Canada

Canadian
Coast Guard

Garde côtière
canadienne

Notices to Mariners

Edition No. 06/2022
June 24, 2022



Safety First, Service Always

Monthly Eastern Edition

Canada 

Notices to Mariners – Monthly Eastern Edition
Edition No. 06/2022

Aussi disponible en français :
Avis aux navigateurs – Édition mensuelle de l'Est
Édition n° 06/2022

Published under the Authority of:

Canadian Coast Guard Programs
Aids to Navigation and Waterways
Fisheries and Oceans Canada
Montreal, QC H2Y 2E7

For more information, contact Notmar.XNCR@dfo-mpo.gc.ca.

© Her Majesty the Queen in Right of Canada,
as represented by the Minister of Fisheries, Oceans
and the Canadian Coast Guard, 2022.

Cat. No. Fs152-5E-PDF (Electronic PDF, English)
ISSN 1719-7678

Cat. No. Fs152-5F-PDF (Electronic PDF, French)
ISSN 1719-7694

A web version is available here:

<https://www.notmar.gc.ca/monthly> (English)

<https://www.notmar.gc.ca/mensuel> (French)

Explanatory Notes – Notices to Mariners (NOTMAR)

Geographical positions refer directly to the graduations of the largest scale Canadian Hydrographic Service chart (unless otherwise indicated).

Bearings refer to the true compass and are measured clockwise from 000° (North) clockwise to 359°; those relating to lights are from seaward.

Visibility of lights is that in clear weather.

Depths - The units used for soundings (metres, fathoms or feet) are stated in the title of each chart.

Elevations are normally given above Higher High Water, Large Tide (unless otherwise indicated).

Distances may be calculated as follows:

- 1 nautical mile = 1,852 metres (6,076.1 feet)
- 1 statute mile = 1,609.3 metres (5,280 feet)
- 1 metre = 3.28 feet

Temporary and Preliminary Notices to Mariners – Section 1A of *Notices to Mariners*

These notices are indicated by a (T) or a (P), respectively. Please note that nautical charts are not amended by the Canadian Hydrographic Service for temporary (T) and preliminary (P) notices. It is recommended that mariners chart these corrections in pencil. For the list of charts affected by (T) & (P) notices, please refer to the current [Notices to Mariners - Monthly Summary of Temporary and Preliminary Notices](#) publication.

Suggestions and Corrections Form

This form is specifically for suggestions and corrections to Notices to Mariners publications. It is available [online](#) and also in [fillable PDF format](#) included with the monthly publication ZIP file.

To report chart discrepancies and/or corrections to the *Canadian Sailing Directions* booklets: Fill out the [Marine Information Reporting Form](#) and/or email chsinfo@dfo-mpo.gc.ca.

To report emergencies or navigational hazards: [Contact your nearest MCTS centre](#)

- VHF channel 16 (156.8 MHz)
- MF/HF frequency 2182 kHz/4125 kHz (where available)
- *16 on a cellphone (where available)

NOTMAR Website – Monthly Editions, Chart Corrections and Chart Patches

The NOTMAR website allows users to access the [monthly publications](#), [chart corrections](#), and [chart patches](#).

Users can subscribe for free to the [email notification service](#) to receive notifications when charts of interest are updated, including their patches, as well as when a new Monthly Edition of *Notices to Mariners* is published.

In addition, the monthly publication and related files to download, such as chart patches, can be obtained all together through the download of a single ZIP file.

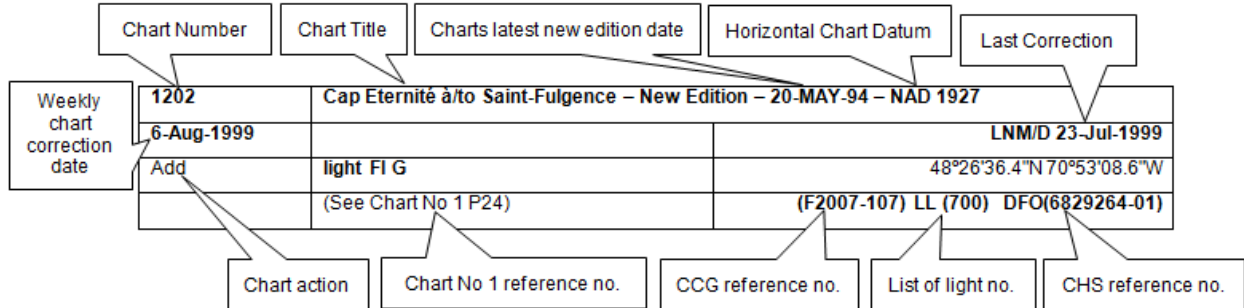
Explanatory Notes – Canadian Hydrographic Service (CHS)

Chart Corrections – Section 2 of *Notices to Mariners*

Corrections to nautical charts will be listed in numerical order by chart number. Each chart correction listed applies only to that particular chart. Related charts, if any, will have their own specific correction listed separately.

Users should also refer to CHS *Chart 1: Symbols, Abbreviations and Terms* for additional information pertaining to the correction of charts.

The illustration below describes the elements that will comprise a typical Section 2 chart correction:



The last correction number is identified with the **LNMD** or **Last Notice to Mariners Number / Date**.

Mariners are advised that only the most critical changes that directly affect safety to navigation are issued in “Section 2 – Chart Corrections.” This limitation is required to ensure that charts remain as clear and easy to read as possible. As a result, mariners may see minor discrepancies of a non-critical nature between information in official publications. For example, a small change in the nominal range or focal height of a light may not result in the production of a chart correction in *Notices to Mariners*, but may result in a correction in the [List of Lights, Buoys and Fog Signals](#) publication.

Note: In the case of a discrepancy between information provided on CHS charts relating to aids to navigation, and the *List of Lights, Buoys and Fog Signals* publication, the latter shall be deemed as containing the most up-to-date information.

Canadian Nautical Charts & Publications

A source list of Canadian nautical charts and publications is published in Notice No. 14 of the *Notices to Mariners Annual Edition 2022*. The source supply and the prices effective at the time of printing are listed. For current chart edition dates, please refer to the following website: www.chs-shc.gc.ca/charts-cartes/paper-papier/index-eng.asp.

Explanatory Notes – Marine Communications and Traffic Services (MCTS)

Navigational Warnings / Notices to Shipping

The Canadian Coast Guard (CCG) is implementing a number of changes to the aids to navigation system in Canada.

These changes are advertised as Navigational Warnings, formerly called Notices to Shipping¹, that are broadcast by the CCG, and are then followed up with Notices to Mariners, then charts are updated by hand correction, reprints or new editions.

Mariners are advised that all relevant Navigational Warnings (NAVWARN) should be kept until superseded by Notices to Mariners or through revised charts issued by the Canadian Hydrographic Service (CHS).

NAVWARN are accessible on the applicable regional page on the CCG Navigational Warnings website at <http://nis.ccg-gcc.gc.ca>.

CHS is reviewing the impact of these changes with CCG and together are preparing an action plan on the issuing of chart revisions.

For further information, contact your regional NAVWARN Issuing Desk.

| | |
|---|---|
| <p>Atlantic Region (North) *Port aux Basques MCTS Centre</p> <p>“N” Series NAVWARN</p> <p>Canadian Coast Guard 49 Stadium Rd. P.O. Box 99 Port aux Basques, NL A0M 1C0</p> <p>Telephone: 709-695-2168 or 1-800-563-9089 Facsimile: 709-695-7784</p> <p>Email: NAVWARN.MCTSPortAuxBasques@innav.gc.ca</p> | <p>Central Region *Prescott MCTS Centre</p> <p>“Q” and “C” Series NAVWARN</p> <p>Canadian Coast Guard 401 King Street West P.O. Box 1000 Prescott, ON K0E 1T0</p> <p>Telephone: 613-925-0666 Facsimile: 613-925-4519</p> <p>Email: NAVWARN.MCTSPrescott@innav.gc.ca</p> |
| <p>Atlantic Region (South) *Sydney MCTS Centre</p> <p>“M” Series NAVWARN</p> <p>Canadian Coast Guard 1190 Westmount Road Sydney, NS B1R 2J6</p> <p>Telephone: 902-564-7751 or 1-800-686-8676 Facsimile: 902-564-7662</p> <p>Email: NAVWARN.MCTSSydney@innav.gc.ca</p> | <p>Arctic Region *Iqaluit MCTS Centre <i>Operational from approximately mid-May until late December.</i></p> <p>“A” and “H” Series NAVWARN</p> <p>Canadian Coast Guard P.O. Box 189 Iqaluit, NU X0A 0H0</p> <p><u>“A” Series NAVWARN</u> Telephone: 867-979-5269</p> <p><u>“H” Series NAVWARN</u> Telephone: 867-979-0310 Facsimile: 867-979-4264</p> <p>Email: NAVWARN.MCTSIqaluit@innav.gc.ca</p> |

*Service available in English and in French.

¹ The expression “Notice to Shipping” was changed to “Navigational Warning” in January 2019.

Table of Contents

| | |
|---|-----------|
| Section 1: General and Safety Information | 1 |
| Canadian Coast Guard Publication – Comments and Suggestions on Notices to Mariners (NOTMAR) Publications | 1 |
| Transport Canada – COVID-19 Measures, Updates and Guidance..... | 1 |
| Transport Canada – Annual Edition of Notices to Mariners 2022 - Section A3, Notice 7A: Voyage Planning for Vessels Intending to Navigate in Canada's Northern Waters | 1 |
| Protecting the North Atlantic Right Whale: Speed Restriction Measures in the Gulf of St. Lawrence ... | 1 |
| Saguenay–St. Lawrence Marine Park and Surrounding Waters – Whale Protection..... | 8 |
| Saguenay–St. Lawrence Marine Park - Beluga Whale Protection: Slowdown Area at the Mouth of the Saguenay Fjord and Area Closure at Baie Sainte-Marguerite..... | 10 |
| *601/22 Canadian Hydrographic Service – Nautical Charts..... | 12 |
| *602/22 Canadian Hydrographic Service – Electronic Navigational Charts..... | 12 |
| *603/22 Canadian Hydrographic Service – Raster Digital Charts (BSB V3)..... | 13 |
| *604/22 Canadian Coast Guard Publication – Amendments to Notices to Mariners Annual Edition 2022 - Section A2, Notice 5: General Guidelines for Aquatic Species at Risk and Important Marine Mammal Areas | 13 |
| Section 1A: Temporary and Preliminary Notices | 14 |
| Reminder – Comment Period for Active Preliminary Notices | 14 |
| *605(P)/22 Cape Pine to / au Cape St Mary's – Bell to be Discontinued | 15 |
| *606(P)/22 Saint John Harbour and Approaches / et les approches – Aid to Navigation Name to be Changed | 15 |
| *607(P)/22 Saint John to / à Evandale – Aid to Navigation Name to be Changed..... | 16 |
| *608(P)/22 Evandale to / à Ross Island – Aid to Navigation Names to be Changed | 16 |
| *609(P)/22 Halifax Harbour: Point Pleasant to / à Bedford Basin – Aid to Navigation Name to be Changed..... | 16 |
| *610(P)/22 Lockeport to / à Cape Sable – Aid to Navigation Names to be Changed | 17 |
| *611(P)/22 Wedgeport and Vicinity / et les abords – Aid to Navigation Names to be Changed | 18 |
| *612(P)/22 Pearl Island to / à Cape La Have – Aid to Navigation Name to be Changed..... | 18 |
| *613(P)/22 St. Margaret's Bay – Aid to Navigation Names to be Changed..... | 19 |
| *614(T)/22 Canal de la Rive Sud – Bridge Repair Work..... | 19 |
| *615(T)/22 Canal de la Rive Sud – Bridge Demolition..... | 19 |
| *616(T)/22 Canal de la Rive Sud – Federal Wharf Permanently Closed to Navigation | 19 |
| *617(T)/22 Lac Saint-Louis – Aids to Navigation Temporarily Established | 20 |
| *618(T)/22 Point Clark to/à Southampton – Aids to Navigation Established..... | 20 |
| Section 2: Chart Corrections | 21 |

Section 3: Radio Aids to Marine Navigation Corrections **38**

*619/22 Radio Aids to Marine Navigation 2022 (Atlantic, St. Lawrence, Great Lakes, Lake Winnipeg, Arctic and Pacific)..... 38

Section 4: Canadian Sailing Directions Corrections **46**

Section 5: List of Lights, Buoys and Fog Signals Corrections **47**

Numerical Index of Canadian Charts Affected

This numerical index lists all nautical charts mentioned in this monthly edition of Notices to Mariners. Only charts appearing in Section 2 of this publication require a chart correction. The appearance of charts in all other sections, particularly those related to the correction of other nautical publications, is included here for reference.

| Chart No. | Pages | Chart No. | Pages | Chart No. | Pages |
|-----------|----------------------------|-----------|--------------------------------|-----------|--------------------|
| 1203 | 21, 50 | 4449 | 14 | 6425 | 12 |
| 1220 | 21, 49 | 4459 | 14 | 6427 | 12 |
| 1230 | 21, 49 | 4466 | 14 | 8005 | 36 |
| 1311 | 21, 50 | 4468 | 27, 48 | 8006 | 37 |
| 1313 | 22, 49 | 4485 | 27, 28 | | |
| 1320 | 22 | 4615 | 28 | | |
| 1429 | 19 | 4617 | 28, 29 | | |
| 1430 | 20, 22 | 4619 | 29 | | |
| 1433 | 22, 23 | 4622 | 29 | | |
| 2042 | 23 | 4624 | 30 | | |
| 2291 | 20 | 4667 | 14 | | |
| 3955 | 12 | 4745 | 14 | | |
| 4001 | 23 | 4820 | 47 | | |
| 4003 | 24 | 4825 | 14 | | |
| 4006 | 24 | 4839 | 30 | | |
| 4015 | 24 | 4842 | 15 | | |
| 4016 | 24, 25 | 4845 | 14 | | |
| 4022 | 25 | 4861 | 14 | | |
| 4024 | 25, 26, 48 | 4864 | 14 | | |
| 4045 | 26 | 4913 | 30 | | |
| 4047 | 26 | 4920 | 14, 30, 31, 47 | | |
| 4117 | 15 | 4940 | 14 | | |
| 4141 | 16 | 4950 | 31 | | |
| 4142 | 16 | 4954 | 31, 32, 48 | | |
| 4202 | 16, 26 | 4955 | 32 | | |
| 4203 | 26, 27 | 4957 | 32, 48 | | |
| 4241 | 17 | 5003 | 32, 33 | | |
| 4244 | 18 | 5300 | 33, 34 | | |
| 4255 | 27 | 5348 | 34 | | |
| 4281 | 14 | 5376 | 34 | | |
| 4308 | 47 | 5412 | 34, 35 | | |
| 4384 | 18 | 5505 | 35, 36 | | |
| 4386 | 19 | 5705 | 36 | | |
| 4405 | 14 | 6423 | 12 | | |
| 4416 | 27, 47, 48 | 6424 | 12 | | |

Section 1: General and Safety Information

Canadian Coast Guard Publication – Comments and Suggestions on Notices to Mariners (NOTMAR) Publications

In an effort to continuously improve the Notices to Mariners publications and to provide the most efficient service possible, the Notices to Mariners team invites all mariners and other interested parties to submit comments and suggestions on possible improvements to its various publications and services at the following email address: Notmar.XNCR@dfo-mpo.gc.ca.

Transport Canada – COVID-19 Measures, Updates and Guidance

(Recurrent publication of notice *401/20, originally published in the *Notices to Mariners – Monthly Eastern Edition 04/2020* publication.)

Please refer to the link below for the latest updates to transportation related measures taken by Transport Canada in response to the evolving novel Coronavirus disease (COVID-19):
<https://www.tc.gc.ca/en/initiatives/covid-19-measures-updates-guidance-tc.html>.

For travel advice and all other updates, please visit: Canada.ca/coronavirus.

Transport Canada – Annual Edition of Notices to Mariners 2022 - Section A3, Notice 7A: Voyage Planning for Vessels Intending to Navigate in Canada's Northern Waters

(Recurrent publication of notice *206/22, originally published in the *Notices to Mariners – Monthly Eastern Edition 02/2022* publication.)

Transport Canada has revised notice 7A, Voyage Planning for Vessels Intending to Navigate in Canada's Northern Waters, of the *Annual Edition of Notices to Mariners* to reflect Arctic Shipping Safety and Pollution Prevention Regulations ([ASSPPR](#)) and to provide further guidance on voyage planning.

Protecting the North Atlantic Right Whale: Speed Restriction Measures in the Gulf of St. Lawrence

(Recurrent publication of notice *401/22, originally published in the *Notices to Mariners – Special Edition 02/2022* publication.)

PURPOSE

This notice describes the speed restriction zones that vessels must follow in the Gulf of St. Lawrence.

The Government of Canada has established these zones to reduce the risk of vessel colliding with North Atlantic right whales (NARW).

BACKGROUND

Due to changing migration patterns of North Atlantic right whales and their increased presence in the Gulf of St. Lawrence, the Government of Canada has set seasonal speed restrictions in specific zones. These speed restrictions zones are defined as “static zones,” “dynamic shipping zones,” “seasonal management areas,” a trial “voluntary slowdown zone” and a “restricted area.” [See the map below for details](#).

Note: Vessels **must follow** Navigational Warnings outlining the speed restrictions. The *Interim Order for the Protection of North Atlantic Right Whales (Eubalaena Glacialis) in the Gulf of St. Lawrence, 2022* enables the issuance of Navigational Warnings (NAVWARNs) imposing speed restrictions and navigation restrictions.

Speed restriction zones are described in monthly Notices to Mariners (NOTMARs), which are published by the Canadian Coast Guard. The status of these zones is broadcast through NAVWARNs, which are published by the Coast Guard's Marine Communications and Traffic Services Centres.

CHANGES TO SPEED RESTRICTION ZONES AND MEASURES

Based on consultations with industry and on scientific data, changes to the speed restriction zones will be effective from April 20, 2022, while the restricted area will be implemented based on whale presence:

- For a third and final year, a trial voluntary slowdown of 10.0 knots over the ground spanning from Cabot Strait (a line running from Cape North NS to Cape Ray NL) to the eastern edge of dynamic shipping zone E will be implemented at the beginning and end of the North Atlantic right whale season.
- Again this year, a restricted area located in and near Shediac Valley. The location and size are both based on historical data of North Atlantic right whale aggregations, while the triggering mechanism is based on in-season detections.
- The 36.57 m (20-fathom) shallow water protocol will apply once again to all commercial fishing vessels.

Please check the latest NAVWARN for all speed restrictions currently in effect.

SPEED RESTRICTION MEASURES FOR 2022

These restrictions will be in effect from **April 20 to November 15, 2022**.

Exceptions

The following exception will apply to **all** measures:

- a) a vessel in distress or providing assistance to a person or a vessel in distress;
- b) a government vessel being used
 - (i) for law enforcement activities;
 - (ii) for search and rescue operations; or
 - (iii) to ensure the competency of the crew or the operational readiness of the vessel or crew with respect to such activities or operations.

STATIC ZONES

In the static zones, **all** vessels above **13 m** in length overall (LOA) must proceed at a speed of not more than 10.0 knots over the ground.

Exceptions

Air cushion vessels operated by or on behalf of the Government of Canada that are engaged in ice-clearing activities from April to June in and around Chaleur Bay are exempted when in operation.

36.57 m (20-fathom) shallow water protocol

Vessels engaged in any commercial fishing activity may proceed at a safe operational speed in waters not more than 36.57 m (20 fathom) deep.

If a notice to fish harvesters states that at least one right whale has been detected within static zone in waters that are not more than 36.57 m deep, the 10 knots speed limit will apply to all vessels above 13 m in length overall (LOA) 15 days after the day on which the whale was detected.

If a new notice to fish harvesters is published or broadcast during the last seven days of the 15-day period, the speed limit will continue to apply for a further 15 days after the day on which the new detection took place.

Coordinates for the northern static zone:

- 50° 20' N, 065° 00' W
- 49° 13' N, 065° 00' W
- 48° 40' N, 064° 13' W
- 48° 40' N, 062° 40' W
- 48° 03' N, 061° 07.5' W
- 47° 58.1' N, 061° 03.5' W
- 48° 00' N, 061° 00' W
- 49° 04' N, 061° 00' W
- 49° 04' N, 062° 00' W
- 49° 43' N, 063° 00' W
- 50° 20' N, 063° 00' W

Coordinates for the southern static zone:

- 48° 40' N, 065° 00' W
- 48° 40' N, 062° 40' W
- 48° 03' N, 061° 07.5' W
- 47° 58.1' N, 061° 03.5' W
- 47° 10' N, 062° 30' W
- 47° 10' N, 065° 00' W

DYNAMIC SHIPPING ZONES

There are five dynamic shipping zones (DSZ) located in the routing systems north and south of Anticosti Island: A, B, C, D and E.

Coordinates for the dynamic shipping zones:

Zone A

- 49° 41' N, 065° 00' W
- 49° 20' N, 065° 00' W
- 49° 11' N, 064° 00' W
- 49° 22' N, 064° 00' W

Zone B

- 49° 22' N, 064° 00' W
- 49° 11' N, 064° 00' W
- 48° 48' N, 063° 00' W
- 49° 00' N, 063° 00' W

Zone C

- 49° 00' N, 063° 00' W
- 48° 48' N, 063° 00' W
- 48° 24' N, 062° 00' W
- 48° 35' N, 062° 00' W

Zone D

- 50° 16' N, 064° 00' W
- 50° 00' N, 064° 00' W
- 49° 56' N, 063° 00' W
- 50° 16' N, 063° 00' W

Zone E

- 48° 35' N, 062° 00' W
- 48° 24' N, 062° 00' W
- 48° 03' N, 061° 07.5' W
- 47° 58.1' N, 061° 03.5' W
- 48° 00' N, 061° 00' W
- 48° 10.5' N, 061° 00' W

When a North Atlantic right whale is detected in a dynamic shipping zone:

- All vessels will be notified via a NAVWARN; and
- Vessels above **13 m** in length overall (LOA) must proceed at a speed of not more than 10.0 knots over the ground within that zone.

Even though dynamic shipping zones overlap with static zones, vessels can travel at a safe operational speed in dynamic shipping zones when they are not under speed restriction. They must also keep in mind that North Atlantic right whales may be nearby.

Speed restrictions in the dynamic shipping zones

The detection of North Atlantic right whales in one or more dynamic shipping zone(s), will trigger a speed restriction in the concerned zone(s). The speed restriction in the dynamic shipping zone(s) will be in effect for 15 days from the date of detection. In the event of a new North Atlantic right whale detection occurring in the last 7 days of the 15-day slowdown period, the speed restriction may be extended for an additional 15 days from the date of the new detection. This would continue until no NARW are detected.

When a NAVWARN is issued implementing a speed restriction in one or more dynamic shipping zone(s), vessels above **13 m** in length (LOA) must not exceed a speed of 10.0 knots over the ground. Within any dynamic zone that is not subject to a speed restriction, mariners may proceed at a safe operational speed. Mariners are encouraged to take into consideration the potential for their vessel striking North Atlantic right whales when considering a “safe operational speed” during navigation.

SEASONAL MANAGEMENT AREAS

Seasonal management area 1 (SMA-1) and seasonal management area 2 (SMA-2) are speed restriction areas located north and south of dynamic shipping zone E, respectively.

Within seasonal management areas, vessels above **13 m** in length (LOA):

- must restrict their speed so as not to exceed 10.0 knots over the ground from April 20 to June 28, 2022; **and**
- are allowed to proceed at a safe operational speed from June 29 to November 15, 2022, unless a North Atlantic right whale is detected. If a whale is detected, a speed restriction of 10.0 knots over the ground will be triggered for 15 days from the date of detection. In the event of a new North Atlantic right whale detection occurring in the last 7 days of the 15-day slowdown period, the speed restriction may be extended for an additional 15 days from the date of the new detection. This would continue until no North Atlantic right whales are detected.

Coordinates for the SMA-1:

- 49° 04' N, 062° 00' W
- 49° 04' N, 061° 00' W
- 48° 10.5' N, 061° 00' W
- 48° 35' N, 062° 00' W

Coordinates for the SMA-2:

- 48° 24' N, 062° 00' W
- 48° 03' N, 061° 07.5' W
- 47° 58.1' N, 061° 03.5' W
- 47° 26.69' N, 062° 00' W

RESTRICTED AREA

In the summer months, an important proportion of the total North Atlantic right whale population gathers for feeding and surface activity near the [Shediac Valley](#). Since this makes the North Atlantic right whale more susceptible to vessel collisions, a mandatory restricted area will be implemented in and near the [Shediac Valley](#) and will come into force once 80% of the restricted area is closed to fishing for the season as per [the Department of Fisheries and Oceans's right whale closure protocol](#). The restricted area will be lifted once the North Atlantic right whale detections decrease in the restricted area.

The size and location of the area are determined based on historical detection data of North Atlantic right whales. All necessary details can be found in the *Interim Order for the Protection of North Atlantic Right Whales (Eubalaena Glacialis) in the Gulf of St. Lawrence, 2022*. Triggering and lifting of the restricted area will be communicated to mariners through a NAVWARN and notice to fish harvesters.

Vessels above **13 m** in length (LOA) will be required to:

- avoid the area unless they are part of the exceptions listed in the *Interim Order for the Protection of North Atlantic Right Whales (Eubalaena Glacialis) in the Gulf of St. Lawrence, 2022*;
- transit the area at a speed not exceeding 8.0 knots over the ground if they are part of the exceptions.

The following exceptions will apply to the restricted area. Vessels listed can travel through the area at not more than 8.0 knots over the ground:

- A vessel being used for commercial fishing;
- A vessel being used for fishing under the authority of a licence issued under the *Aboriginal Communal Fishing Licences Regulations*;
- A vessel being used for research purposes on behalf of the Government of Canada;
- A vessel being used as part of the Department of Fisheries and Oceans' Marine Mammal Response Program to assist a marine mammal or sea turtle in distress or to access or retrieve a deceased marine mammal or sea turtle;
- A vessel authorized by the Government of Canada to retrieve or identify the location of abandoned or lost fishing gear;
- A vessel involved in pollution response operations;
- A vessel avoiding immediate or unforeseen danger;
- A vessel involved in research relating to right whales as part of a project that has received funding from the Government of Canada.

The following vessels can travel through the restricted area at a speed over 8.0 knots, but below 10.0 knots over the ground as required by the static speed restriction zone:

- A vessel being used by an employee of the Government of Canada or peace officer who is performing their duties.

The location and size of the restricted area will not be modified during the season.

Coordinates for the restricted area:

- 48°31.8' N, 063°39.6' W
- 48°24.72' N, 063°17.88' W
- 47°18.84' N, 064°10.8' W
- 47°27.18' N, 064°30.72' W

Inclement weather exception

Mariners will be notified in advance via a NAVWARN should the speed restriction status change in any zone or area, due to inclement weather.

Within any zone or area that is no longer subject to a speed restriction due to adverse weather conditions, mariners may proceed at a safe operational speed. Mariners are however encouraged to take into consideration the potential for their vessel striking North Atlantic right whales when considering a “safe operational speed” during navigation.

*Non-expected vessels are still prohibited from transiting through the restricted area.

TRIAL VOLUNTARY SLOWDOWN IN CABOT STRAIT

To coincide with the North Atlantic right whales entering and exiting the Gulf of St. Lawrence in large numbers, a trial voluntary slowdown is being put in place for the third year in Cabot Strait from April 20 to June 28, 2022, and from September 28 to November 15, 2022.

- During these periods, vessels above 13 m in length (LOA) are requested to voluntarily reduce their speed as to not exceed 10.0 knots over the ground.

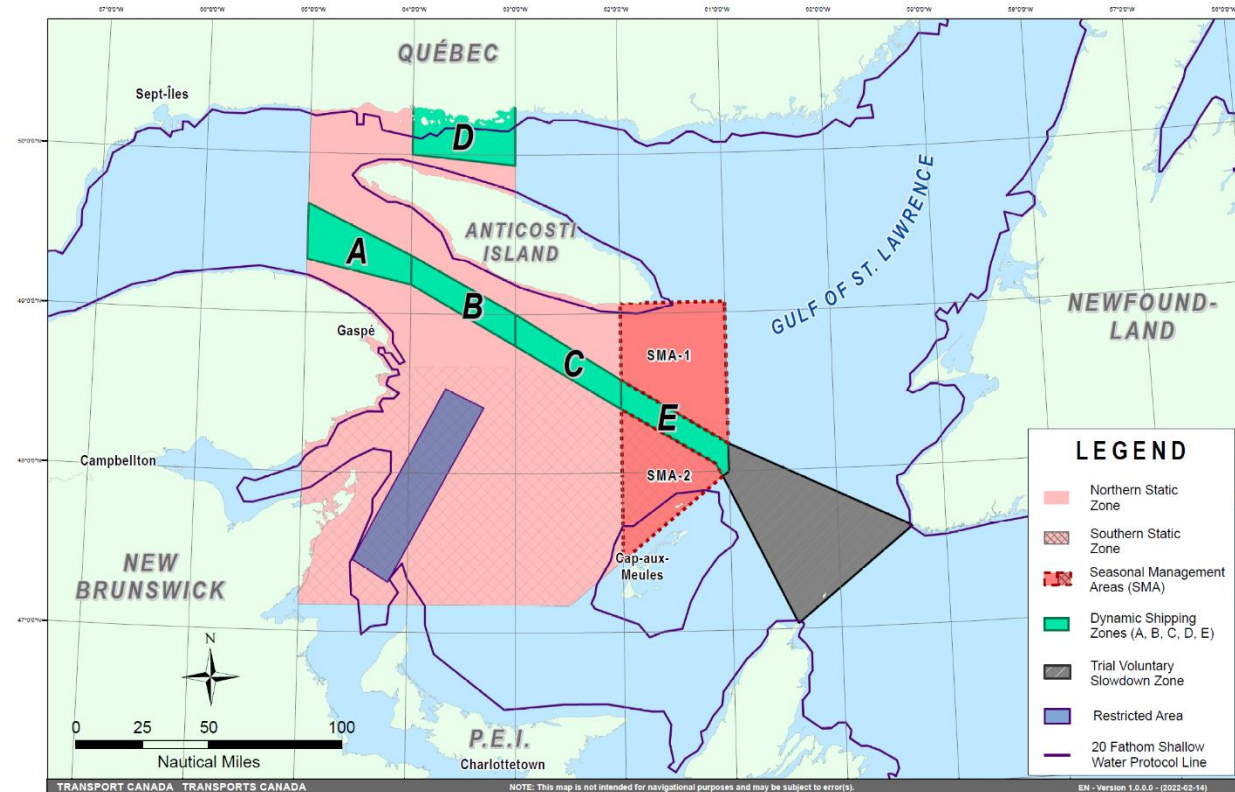
Voluntary slowdown zone coordinates:

- 48° 10.5' N, 061° 00' W
- 47° 37.2' N, 059° 18.5' W
- 47° 02' N, 060° 23.7' W
- 47° 58.1' N, 061° 03.5' W
- 48° 00' N, 061° 00' W

MAP OF THE GULF OF ST. LAWRENCE

The following map shows

- the static zones (north and south), in pink;
- the dynamic shipping zones (A, B, C, D and E), in green;
- the seasonal management areas, in dark pink;
- the trial voluntary slowdown zone, in grey;
- the restricted area, in dark blue; and
- the 36.57 m (20 fathom) shallow water protocol line.



This map is for visual representation only and is not to be used for navigation or enforcement.

NAVWARN BROADCASTS

The Canadian Coast Guard issues NAVWARNs:

- by radio broadcast; and
- online at [Canada's Maritime Information Portal](#) and its [Navigational Warnings](#) site.

Mariners must ensure they have accurate and up-to-date information about the protection of the North Atlantic right whale, as in all applicable NOTMARs and NAVWARNs.

For the North Atlantic right whale speed restrictions, the NAVWARN(s) currently in effect will be provided to vessels subject to the *Vessel Traffic Services Zone Regulations* or the *Eastern Canada Vessel Traffic Services Zone Regulations*:

Outbound vessels will receive NAVWARNs

- at Calling-in-Point 10 (St-Laurent); or
- upon a departure downstream from the Quebec pilot station (including the Saguenay River, Chaleur Bay, Miramichi Bay, etc.)

Inbound vessels will receive NAVWARNs

- when a clearance to enter Canadian waters is granted

Vessels in transit will receive NAVWARNs

- at the last reporting point prior to entering the mandatory speed restriction zones; and/or
- at 10 nautical miles before they enter the mandatory speed restriction zones

For those vessels not subject to the above-mentioned regulations, vessel operators are required to monitor broadcasts by the Canadian Coast Guard's Marine Communications and Traffic Services network for the most up-to-date information. For marine radio frequencies and broadcast times, information may be found in the [Radio Aids to Marine Navigation](#) publication.

AIDS TO NAVIGATION

The Canadian Coast Guard is currently testing virtual Automatic Identification System (AIS) aids to navigation (AIS AtoN) in specific areas. These aids notify mariners of a dynamic shipping zone and/or a seasonal management area subject to a speed restriction.

Each zone is delimited by four to six virtual AIS AtoN, which can be displayed on a ship's navigation equipment, such as

- Electronic Chart Display and Information System (ECDIS);
- Electronic Chart System (ECS);
- RADAR;
- Minimum Keyboard Display (MKD); and
- Electronic Nautical Chart (ENC).

The Canadian Coast Guard broadcasts the virtual AIS AtoN only when a speed restriction is in effect in one or more testing zones.

Mariners must select the virtual AIS AtoN symbol to view a message such as "SectA1 Spd Lim 10 kt." This message refers to a speed restriction in effect for a specific zone.

Note: This system is not the primary method of communicating this information.

COMPLIANCE AND ENFORCEMENT

Vessels must comply with the Interim Orders made pursuant to the *Canada Shipping Act, 2001*, and any NAVWARNs broadcast and published by the Canadian Coast Guard relating to the Interim Orders, aimed at regulating the navigation for the purposes of protecting the North Atlantic right whales.

If a vessel does not comply with the Interim Orders or instructions in the NAVWARNs related to the Interim Orders, the vessel could face:

- administrative monetary penalties up to a maximum of CAN \$250,000; and/or
- penal sanctions under the *Canada Shipping Act, 2001*.

If a vessel appears to have violated the speed restriction, Transport Canada Marine Safety inspectors will review all information provided through AIS and seek an explanation from the master.

No exemptions to the speed restriction will be granted in advance. However, if a deviation from the speed restrictions is necessary for safety reasons, the following information must be entered into the bridge logbook:

- reason(s) for deviation;
- speed at which vessel is operated;
- latitude and longitude at time of deviation;
- time and duration of deviation; and
- master of the vessel shall sign and date the bridge logbook entry.

For any deviation, Transport Canada will review and consider reasons such as:

- navigating to ensure vessel safety;
- weather conditions;
- force majeure (unforeseeable circumstances); and
- responding to emergencies.

REPORT A NORTH ATLANTIC RIGHT WHALE SIGHTING

If you see live, free-swimming whales:

- Call 1-902-440-8611 (local) or 1-844-800-8568 (toll free)
- Email: XMARWhalesightings@dfo-mpo.gc.ca

If you see a North Atlantic right whale that is entangled, injured or dead, please report it to your nearest Canadian Coast Guard Marine Communications and Traffic Services Centre, or call:

Southern part of the Gulf of St. Lawrence

Marine Animal Response Society
Telephone: 1-866-567-6277

Newfoundland and Labrador

Whale Release and Strandings
Telephone: 1-888-895-3003

For the Québec Sector

Marine Mammal Emergencies
Telephone: 1-877-722-5346

Please consult WhaleMap for the latest right whale observations: <https://whalemap.ocean.dal.ca/>

Saguenay–St. Lawrence Marine Park and Surrounding Waters – Whale Protection

(Recurrent publication of notice *406/22, originally published in the *Notices to Mariners – Monthly Eastern Edition 04/2022* publication.)

The waters in and around the Saguenay–St. Lawrence Marine Park are well known for the resident endangered beluga population and the wide diversity of whales that migrate there to feed, particularly between April and November.

REGULATORY PROTECTION MEASURES

All whale species that are found in the St. Lawrence are protected under the *Marine Mammal Regulations*, pursuant to the *Fisheries Act*. Within the boundaries of the Marine Park, specific measures are set out in the *Marine Activities in the Saguenay–St. Lawrence Marine Park Regulations*, pursuant to the establishment of the *Saguenay–St. Lawrence Marine Park Act*. Any collision with a marine mammal within the Marine Park must immediately be reported to a park warden at 1-866-508-9888. For collisions that occur outside the Marine Park or for any situation involving a marine mammal that is dead or in trouble, contact the emergency network at 1-877-722-5346 or on VHF channel 16.

For more information on the Saguenay–St. Lawrence Marine Park, see notice 5C of the *Notices to Mariners Annual Edition 2022*.

VOLUNTARY PROTECTION MEASURES

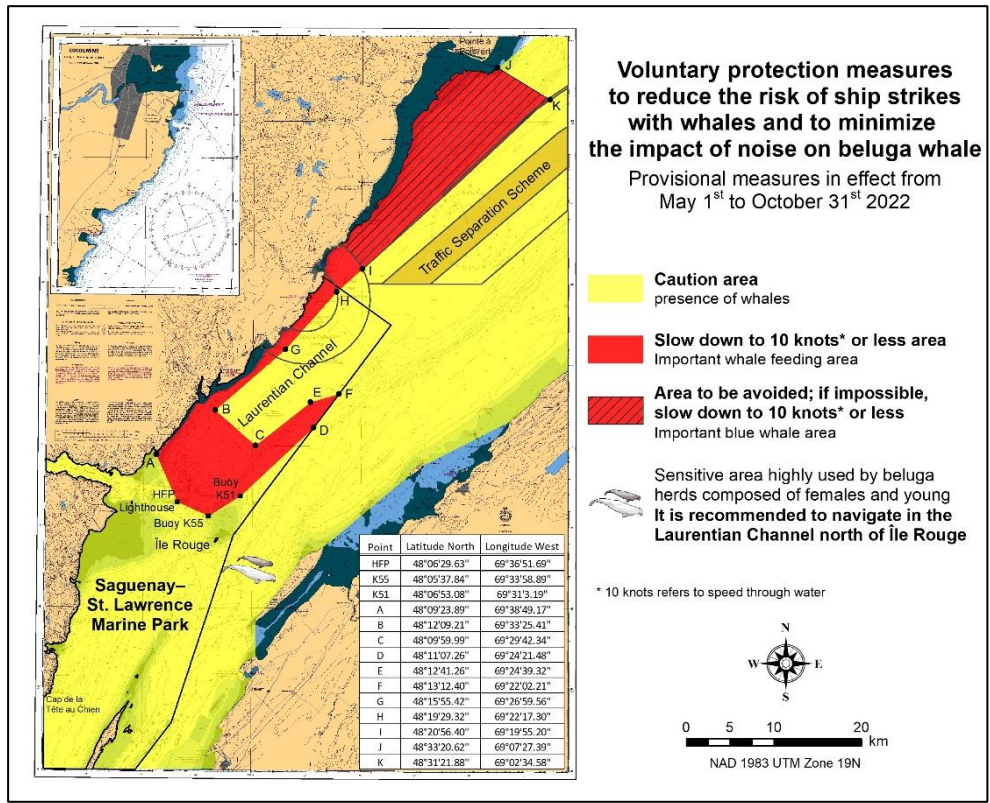
Provisional measures in effect from May 1 to October 31, 2022. See map at the end of this notice.

These measures apply to merchant vessels and cruise ships between Pointe à Boisvert and Cap de la Tête au Chien to prevent collisions with whales. These measures should only be taken when they will not jeopardize navigational safety.

Caution area (yellow area): To reduce the risk of collisions with whales that can be present anywhere in this area, heightened vigilance of navigators is critical. Posting a lookout is recommended in order to increase the chances of seeing the whales and thus taking necessary measures to avoid them. If bypassing the whales is not possible, slow down and wait for the animals to move away to a distance greater than 400 metres (0.215 nautical miles) before resuming original speed. It is more difficult to see the animals at night therefore increased caution is recommended.

Slow down to 10 knots or less area (red area): To reduce the risk of collisions with whales in this feeding area, it is recommended that vessels slow down to a maximum speed through the water of 10 knots and post a lookout. It is further recommended to remain in the Laurentian Channel to the north of Île Rouge to minimize the impact of noise in a sensitive area south of this island, which is highly frequented by herds of beluga whales composed of females and young.

Area to be avoided (hatched red area): To reduce noise and the risk of collisions with whales, vessels should avoid transiting through this area which is highly frequented by blue whales, an endangered species. If the area cannot be avoided, slow down to a speed through the water of 10 knots or less.



Saguenay–St. Lawrence Marine Park - Beluga Whale Protection: Slowdown Area at the Mouth of the Saguenay Fjord and Area Closure at Baie Sainte-Marguerite

(Recurrent publication of notice *407/22, originally published in the *Notices to Mariners – Monthly Eastern Edition 04/2022* publication.)

The Saguenay–St. Lawrence Marine Park and its surrounding area are at the heart of endangered beluga whale critical summer habitat. Marine mammal protection measures have been put in place in accordance with the *Marine Activities in the Saguenay–St. Lawrence Marine Park Regulations* within the limits of the Marine Park.

However, important feeding, calving and rearing areas for beluga whales require greater protection to ensure the recovery of the species. The portion of the Saguenay situated between the mouth of the Fjord and Baie Sainte-Marguerite is one of the areas most used by females and their young from May to October. The mouth of the Saguenay is known as a feeding ground and Baie Sainte-Marguerite as a calving and rearing area.

In order to prevent collisions with beluga whales, a compulsory 15-knot slowdown area is in effect from May 1st to October 31st at the mouth of the Saguenay. To ensure tranquility for female belugas and their young during the critical calving period, access to Baie Sainte-Marguerite is prohibited to all vessels from June 21st to September 21st, except for special authorizations (see description below).

For safety reasons, *the slowdown area measure at the mouth of the Saguenay Fjord does not apply* to cargo ships (see the monthly edition of *Notice to Mariners* from May to October for voluntary protection measures in the St. Lawrence Estuary). An enhanced vigilance is, however, recommended to all navigators between the mouth of the Saguenay Fjord and Baie Sainte-Marguerite for the protection of beluga whales.

For more information on the Saguenay–St. Lawrence Marine Park, see notice 5C of the *Notices to Mariners Annual Edition 2022* or visit marinepark.qc.ca.

REGULATORY PROTECTION MEASURES — BELUGA WHALE

Entire Marine Park Territory:

- When beluga whales are less than half a nautical mile (926 metres) from a motorized vessel, the vessel must maintain a steady speed of between 5 and 10 knots.
- All vessels, including human-powered vessels (kayaks and canoes), must continue to move forward and maintain their heading.
- All vessels must maintain a minimum distance of 400 metres from beluga whales at all times.

For more information concerning the regulations, consult: marinepark.ca/protect/.

Mouth of the Saguenay Fjord (Figure 1) — Slowdown Area (area crosshatched in red):

- Maximum speed at the mouth of the Saguenay between buoys S7 and S8 and the ferry docks between Baie-Sainte-Catherine and Tadoussac is 15 knots from May 1st to October 31st.

Baie Sainte-Marguerite (Figure 2) — Area Closure (red area):

- From June 21st to September 21st, vessels must not enter the red area, which follows a line between Cap Nord-Ouest and Cap Sainte-Marguerite.
- Special authorizations are granted only for kayaks, canoes and recreational fishermen who must travel without stopping along a corridor within 10 metres of the shore or in shallow areas.

VOLUNTARY PROTECTION MEASURES

Baie Sainte-Marguerite sector (Figure 2) — Transit Area (area crosshatched in yellow):

- From June 21st to September 21st, navigation in this area is recommended at a speed of between 5 and 10 knots without stopping.

The purpose of this transit area is to favour respect of the *Marine Activities in the Saguenay–St. Lawrence Marine Park Regulations*, since beluga whales are often present in the Baie Sainte-Marguerite sector.

INFORMATION

All incidents, including collisions with whales, must be reported without delay by calling 1-866-508-9888. For any other situation concerning a marine mammal that is either dead or in trouble, contact the Marine Mammal Emergency Response Network at 1-877-722-5346, or use VHF channel 16.

Figure 1

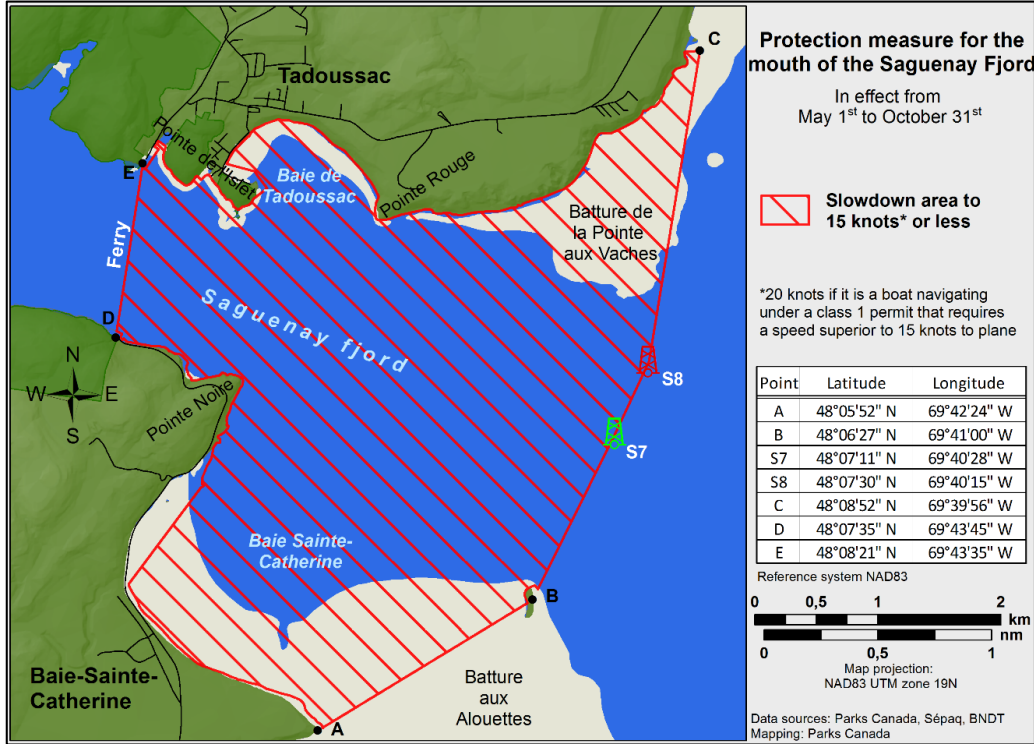
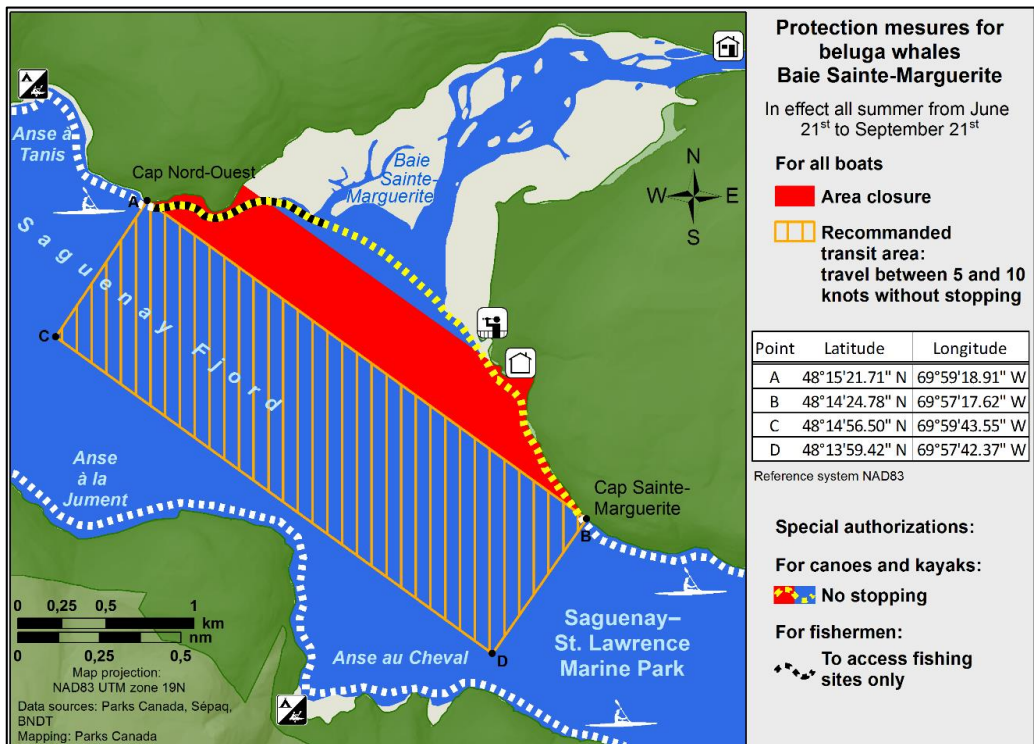


Figure 2



***601/22 Canadian Hydrographic Service – Nautical Charts**

| Charts | Main Title | Scale | Published | Cat# | Price |
|---------------------|---|----------|------------|------|---------|
| New Editions | | | | | |
| 3955 | Plans - Prince Rupert Harbour | 1:20 000 | 2022-06-10 | 2 | \$20.00 |
| 6423 | Askew Islands to/à Bryan Island Kilometre 1180 / Kilometre 1240 | 1:50 000 | 2022-06-10 | 4 | \$12.00 |
| 6424 | Bryan Island to/à Travaillant River Kilometre 1240 / Kilomètre 1325 | 1:50 000 | 2022-06-10 | 4 | \$12.00 |
| 6425 | Travaillant River to/à Adam Cabin Creek Kilometre 1325 / Kilomètre 1400 | 1:50 000 | 2022-06-10 | 4 | \$12.00 |
| 6427 | Point Separation to/au Aklavik Channel Kilometre 1480 / Kilomètre 1540 | 1:50 000 | 2022-06-10 | 4 | \$12.00 |

***602/22 Canadian Hydrographic Service – Electronic Navigational Charts**

| S-57 ENC Number | Chart Title | ENC Compilation Scale | Published |
|-----------------------|--|-----------------------|------------|
| New Charts | | | |
| CA373482 (Edn 1.000) | Strathcona Sound and/et Adams Sound | 1:40 000 | 2022-06-10 |
| CA571090 (Edn 1.000) | CA571090 | 1:0 | 2022-06-17 |
| CA571091 (Edn 1.000) | CA571091 | 1:0 | 2022-06-17 |
| CA571094 (Edn 1.000) | CA571094 | 1:0 | 2022-06-17 |
| CA571095 (Edn 1.000) | CA571095 | 1:0 | 2022-06-17 |
| CA670760 (Edn 1.000) | Squamish Berth 1 | 1:1 000 | 2022-06-03 |
| New Editions | | | |
| CA373071 (Edn 8.000) | Main Duck Island to/à Scotch Bonnet Island | 1:77 700 | 2022-06-03 |
| CA373090 (Edn 7.000) | Pointe aux Pins to/à Point Pelee | 1:100 000 | 2022-06-03 |
| CA373262 (Edn 8.000) | Victoria Strait | 1:75 000 | 2022-06-03 |
| CA376356 (Edn 3.000) | Quaker Hat to/à Cape Harrison | 1:30 000 | 2022-06-03 |
| CA376358 (Edn 3.000) | Green Bay to/à Double Island | 1:30 000 | 2022-06-10 |
| CA376361 (Edn 3.000) | Cape Makkovik to/à Winsor Harbour Island | 1:30 000 | 2022-06-03 |
| CA376362 (Edn 3.000) | Kaipokok Bay | 1:30 000 | 2022-06-03 |
| CA376370 (Edn 3.000) | Cape Harrison to Dog Islands | 1:30 000 | 2022-06-03 |
| CA376665 (Edn 2.000) | Hare Islands to/à North Head | 1:50 000 | 2022-06-24 |
| CA376739 (Edn 2.000) | Epinette Point to/à Terrington Basin | 1:30 000 | 2022-06-03 |
| CA376822 (Edn 3.000) | Winsor Harbour Island to/aux Kikkertaksoak Islands | 1:30 000 | 2022-06-03 |
| CA376823 (Edn 3.000) | Winsor Harbour Island to/aux Kikkertaksoak Islands | 1:30 000 | 2022-06-10 |
| CA479021 (Edn 11.000) | Cap aux Oies à/to Sault-au-Cochon | 1:45 000 | 2022-06-10 |
| CA479228 (Edn 4.000) | Lac Saint-Louis | 1:22 000 | 2022-06-10 |
| CA570168 (Edn 7.000) | Port Alberni | 1:6 000 | 2022-06-10 |

| S-57 ENC Number | Chart Title | ENC Compilation Scale | Published |
|-------------------------------------|---|---|------------|
| CA570383 (Edn 13.000) | Nanaimo Harbour and/et Departure Bay | 1:5 000 | 2022-06-03 |
| CA579022 (Edn 11.000) | Saint-Joseph-de-la-Rive | 1:4 000 | 2022-06-10 |
| CA579023 (Edn 13.000) | L'Isle-aux-Coudres | 1:4 000 | 2022-06-10 |
| CA579024 (Edn 8.000) | Saint-Jean-Port-Joli | 1:4 000 | 2022-06-10 |
| CA579098 (Edn 6.000) | Havre de Natashquan et les approches/and Approaches | 1:8 000 | 2022-06-03 |
| CA579229 (Edn 3.000) | Rapides de Vaudreuil | 1:8 000 | 2022-06-10 |
| Charts Permanently Withdrawn | | | |
| CA476666 | Saglek Bay | | |
| CA570080 | Stewart | Cancelled by CA571095, CA571094, CA571091, CA571090 | |
| CA670741 | Stewart - World Port and/et Bulk Terminal | Cancelled by CA571091, CA571090 | |

***603/22 Canadian Hydrographic Service – Raster Digital Charts (BSB V3)**

| Charts | Main Title | Scale | Published |
|---------------------|-------------------------------|----------|------------|
| New Editions | | | |
| RM-3955 | Plans - Prince Rupert Harbour | 1:20 000 | 2022-06-10 |

***604/22 Canadian Coast Guard Publication – Amendments to Notices to Mariners Annual Edition 2022 - Section A2, Notice 5: General Guidelines for Aquatic Species at Risk and Important Marine Mammal Areas**

Several amendments have been made throughout Notice 5, General Guidelines for Aquatic Species at Risk and Important Marine Mammal Areas. The latest version of this notice can be found at the following link: <https://www.notmar.gc.ca/publications/annual/section-a/a5-en.pdf>.

Section 1A: Temporary and Preliminary Notices

Reminder – Comment Period for Active Preliminary Notices

This is a reminder that the comment period is still open for the following active Preliminary notices:

| Notice # | Reference Chart # | Aids Affected (LL #) | Intent of Notice |
|--|-------------------|----------------------|---------------------------------------|
| Newfoundland and Labrador Coast | | | |
| 410(P)/22 | 4845 | 511.21 | Light Buoy to be Discontinued |
| 508(P)/22 | 4825 | 144.56 | Aid to Navigation Name to be Changed |
| 509(P)/22 | 4667 | 222.12 | Aid to Navigation Name to be Changed |
| 510(P)/22 | 4745 | 281,7, 281,8 | Aid to Navigation Names to be Changed |
| 511(P)/22 | 4864 | 361.07 | Light Buoy to be Discontinued |
| 512(P)/22 | 4861 | 367.5 | Light Buoy to be Discontinued |
| Atlantic Coast | | | |
| 412(P)/22 | 4449 | 868 | Aid to Navigation to be Discontinued |
| 514(P)/22 | 4281 | 5664,06, 5664,07 | Aid to Navigation Names to be Changed |
| 515(P)/22 | 4940 | 896.8 | Aid to Navigation Name to be Changed |
| 516(P)/22 | 4405 | 977 | Aid to Navigation Name to be Changed |
| 517(P)/22 | 4466 | 6001,1, 6001,5 | Aid to Navigation Names to be Changed |
| 518(P)/22 | 4459 | 1019, 1020 | Aid to Navigation Names to be Changed |
| 519(P)/22 | 4920 | LIST | Aid to Navigation Names to be Changed |

Please refer to the [Notices to Mariners - Monthly Summary of Temporary and Preliminary Notices](#) publication for details.

Newfoundland and Labrador Coast

Temporary Notices

No notices applicable for this edition.

Preliminary Notices

Atlantic Region

Comment Submission

Comments on proposed changes in preliminary (P) notices are solicited from mariners and other interested parties within three months of the initial publication date. Following this date, the notices will be cancelled. Any objections raised must state the facts on which they are based and should include supporting information on safety, commerce and public benefit.

Comments should be directed to the following:

Superintendent,
Aids to Navigation & Waterways
Canadian Coast Guard, Atlantic Region
P.O. Box 1000
50 Discovery Drive
Dartmouth, NS B2Y 3Z8
Telephone: (506) 636-4708
Email: DFO.CCGATLaidstoNavDiscont-AidesalanavSupprATLGCC.MPO@dfo-mpo.gc.ca

***605(P)/22 Cape Pine to / au Cape St Mary's – Bell to be Discontinued**

Reference chart: 4842

The Canadian Coast Guard proposes to permanently discontinue the bell from the following aid to navigation:

| Aid Name | LL # | Position |
|---------------------------------------|------|--------------------------------|
| Point La Haye light and bell buoy MH2 | 7.5 | 46° 53' 35.8"N 053° 37' 35.9"W |

The buoy and the light will remain.

Initial publication date: Friday, June 24, 2022

[Comment submission deadline](#): Thursday, September 29, 2022

(N2022-084)

Atlantic Coast

Temporary Notices

No notices applicable for this edition.

Preliminary Notices

Atlantic Region

Comment Submission

Comments on proposed changes in preliminary (P) notices are solicited from mariners and other interested parties within three months of the initial publication date. Following this date, the notices will be cancelled. Any objections raised must state the facts on which they are based and should include supporting information on safety, commerce and public benefit.

Comments should be directed to the following:

Superintendent,
Aids to Navigation & Waterways
Canadian Coast Guard, Atlantic Region
P.O. Box 1000
50 Discovery Drive
Dartmouth, NS B2Y 3Z8
Telephone: (506) 636-4708
Email: DFO.CCGATLaidstoNavDiscont-AidesalanavSupprATLGCC.MPO@dfo-mpo.gc.ca

***606(P)/22 Saint John Harbour and Approaches / et les approches – Aid to Navigation Name to be Changed**

Reference chart: 4117

The Canadian Coast Guard proposes to permanently change the name of the following aid to navigation:

| Aid Name | LL # | Position | Proposed Change |
|------------------------------------|------|--------------------------------|--|
| Negro Head light and bell buoy JA1 | 98 | 45° 11' 12.8"N 066° 08' 18.0"W | Change name to: "Lorneville Approach light buoy JA1" |

Initial publication date: Friday, June 24, 2022

[Comment submission deadline](#): Thursday, September 29, 2022

(F2022-003)

***607(P)/22 Saint John to / à Evandale – Aid to Navigation Name to be Changed**

Reference chart: 4141

The Canadian Coast Guard proposes to permanently change the name of the following aid to navigation:

| Aid Name | LL # | Position | Proposed Change |
|------------------------|--------|-----------------------------------|---|
| Indian Island buoy AM1 | 5116.1 | 45° 18' 25.3"N 066° 06' 49.9"W | Change name to: "Brothers Cove buoy AM1" |

Initial publication date: Friday, June 24, 2022

[Comment submission deadline](#): Thursday, September 29, 2022

(F2022-002)

***608(P)/22 Evandale to / à Ross Island – Aid to Navigation Names to be Changed**

Reference chart: 4142

The Canadian Coast Guard proposes to permanently change the names of the following aids to navigation:

| Aid Name | LL # | Position | Proposed Changes |
|--------------------------------------|----------|-----------------------------------|---|
| Indian Point East spar buoy EF1 | 5141.601 | 46° 04' 49.8"N 065° 55' 22.9"W | Change name to: "Moray Point buoy EF1" |
| Indian Point North spar buoy EF3 | 5141.603 | 46° 05' 02.0"N 065° 55' 35.5"W | Change name to: "Moray Point buoy EF3" |
| Indian Point Northwest spar buoy EF4 | 5141.604 | 46° 05' 00.0"N 065° 55' 54.7"W | Change name to: "Moray Point buoy EF4" |
| Indian Point West spar buoy EF5 | 5141.605 | 46° 04' 54.8"N 065° 56' 17.0"W | Change name to: "Moray Point buoy EF5" |

Initial publication date: Friday, June 24, 2022

[Comment submission deadline](#): Thursday, September 29, 2022

(F2022-002)

***609(P)/22 Halifax Harbour: Point Pleasant to / à Bedford Basin – Aid to Navigation Name to be Changed**

Reference chart: 4202

The Canadian Coast Guard proposes to permanently change the name of the following aid to navigation:

| Aid Name | LL # | Position | Proposed Change |
|------------------------------|------|-----------------------------------|--|
| Indian Point light buoy HP21 | 534 | 44° 37' 46.5"N 063° 31' 56.8"W | Change name to: "Eastern Passage light buoy HP21" |

Initial publication date: Friday, June 24, 2022

[Comment submission deadline](#): Thursday, September 29, 2022

(F2022-006)

***610(P)/22 Lockeport to / à Cape Sable – Aid to Navigation Names to be Changed**

Reference chart: 4241

The Canadian Coast Guard proposes to permanently change the names of the following aids to navigation:

| Aid Name | LL # | Position | Proposed Changes |
|---|---------|-----------------------------------|---|
| Negro Harbour light buoy SN52 | 350.02 | 43° 31' 48.9"N 065° 20' 53.0"W | Change name to: "East Point light buoy SN52" |
| Negro Harbour light buoy SP56 | 351.02 | 43° 32' 36.4"N 065° 21' 51.5"W | Change name to: "Apple Island light buoy SP56" |
| Negro Harbour light buoy SP59 | 351.04 | 43° 33' 08.0"N 065° 22' 04.0"W | Change name to: "North East Harbour light buoy SP59" |
| Negro Harbour light and whistle buoy SN | 353 | 43° 31' 01.5"N 065° 18' 50.0"W | Change name to: "East Entrance Fairway light buoy SN" |
| Negro Harbour buoy SN56 | 5350.05 | 43° 32' 30.0"N 065° 23' 08.0"W | Change name to: "John Point buoy SN56" |
| Negro Harbour buoy SN59 | 5350.06 | 43° 32' 40.0"N 065° 24' 33.0"W | Change name to: "Franks Ledge buoy SN59" |
| Negro Harbour buoy SNP | 5351.01 | 43° 32' 24.0"N 065° 22' 19.0"W | Change name to: "East Entrance Starboard Bifurcation buoy SNP" |
| Negro Harbour buoy SP65 | 5351.06 | 43° 33' 40.0"N 065° 22' 09.5"W | Change name to: "North East Harbour buoy SP65" |

Initial publication date: Friday, June 24, 2022

[Comment submission deadline](#): Thursday, September 29, 2022

(F2022-005)

***611(P)/22 Wedgeport and Vicinity / et les abords – Aid to Navigation Names to be Changed**

Reference chart: 4244

The Canadian Coast Guard proposes to permanently change the names of the following aids to navigation:

| Aid Name | LL # | Position | Proposed Changes |
|----------------------------------|----------|-----------------------------------|---|
| Indian Sluice Point Wharf | 294.55 | 43° 46' 21.2"N 065° 57' 02.4"W | Change name to: "Sluice Point Wharf Light" |
| Indian Sluice Bay light buoy TE2 | 294.551 | 43° 44' 04.6"N 065° 56' 41.6"W | Change name to: "Wilson Island North light buoy TE2" |
| Indian Sluice Bay buoy TE1 | 5294.51 | 43° 44' 11.8"N 065° 56' 37.5"W | Change name to: "Wilson Island North buoy TE1" |
| Indian Sluice Bay buoy TE2/2 | 5294.52 | 43° 44' 17.8"N 065° 56' 30.4"W | Change name to: "Wilson Island North buoy TE2/2" |
| Indian Sluice Bay buoy TE4 | 5294.53 | 43° 44' 27.8"N 065° 56' 26.7"W | Change name to: "Mikes Island South buoy TE4" |
| Indian Sluice Bay buoy TE6 | 5294.54 | 43° 44' 38.8"N 065° 56' 20.4"W | Change name to: "Mikes Island East buoy TE6" |
| Indian Sluice Bay buoy TE8 | 5294.555 | 43° 44' 56.3"N 065° 56' 25.9"W | Change name to: "Mikes Island East buoy TE8" |
| Indian Sluice Bay buoy TE12 | 5294.57 | 43° 45' 22.3"N 065° 56' 39.9"W | Change name to: "Surettes Island West buoy TE12" |
| Indian Sluice Bay buoy TE13 | 5294.58 | 43° 45' 39.3"N 065° 56' 44.9"W | Change name to: "Surettes Island West buoy TE13" |

Initial publication date: Friday, June 24, 2022

[Comment submission deadline](#): Thursday, September 29, 2022

(F2022-004)

***612(P)/22 Pearl Island to / à Cape La Have – Aid to Navigation Name to be Changed**

Reference chart: 4384

The Canadian Coast Guard proposes to permanently change the name of the following aid to navigation:

| Aid Name | LL # | Position | Proposed Change |
|---|------|-----------------------------------|--|
| Indian Island light and whistle buoy TS51 | 420 | 44° 09' 18.3"N 064° 22' 13.8"W | Change name to: "Cape La Have Island South Whistle buoy TS51" |

Initial publication date: Friday, June 24, 2022

[Comment submission deadline](#): Thursday, September 29, 2022

(F2022-005)

***613(P)/22 St. Margaret's Bay – Aid to Navigation Names to be Changed**

Reference chart: 4386

The Canadian Coast Guard proposes to permanently change the names of the following aids to navigation:

| Aid Name | LL # | Position | Proposed Changes |
|--------------------------|---------|-----------------------------------|--|
| Indian Harbour | 482 | 44° 31' 20.3"N 063° 56' 45.7"W | Change name to: "Paddy Head Island Light" |
| Indian Harbour buoy DN56 | 5484.01 | 44° 31' 15.3"N 063° 56' 39.7"W | Change name to: "Paddy Head Island buoy DN56" |
| Indian Harbour buoy DN57 | 5484.02 | 44° 31' 22.3"N 063° 56' 40.7"W | Change name to: "Paddy Head Island buoy DN57" |
| Indian Harbour buoy DN58 | 5484.03 | 44° 31' 21.3"N 063° 56' 37.8"W | Change name to: "Paddy Head Island buoy DN58" |
| Indian Harbour buoy DN60 | 5484.04 | 44° 31' 24.8"N 063° 56' 37.8"W | Change name to: "Paddy Head Island buoy DN60" |
| Indian Harbour buoy DG52 | 5484.05 | 44° 32' 10.2"N 063° 56' 34.0"W | Change name to: "Modesty Cove buoy DG52" |

Initial publication date: Friday, June 24, 2022

[Comment submission deadline](#): Thursday, September 29, 2022

(F2022-006)

Inland Waters

Temporary Notices

***614(T)/22 Canal de la Rive Sud – Bridge Repair Work**

Reference chart: 1429

Repair work in progress at the Honoré-Mercier Bridge (upstream) between Lasalle and Kahnawake. Bridge deck installed under the bridge span.

(NW-Q-1810-19)

***615(T)/22 Canal de la Rive Sud – Bridge Demolition**

Reference chart: 1429

Demolition work on the old Champlain Bridge in progress. Tugs, workboats, and barges on site.

(NW-Q-0204-21)

***616(T)/22 Canal de la Rive Sud – Federal Wharf Permanently Closed to Navigation**

Reference chart: 1429

The Lachine Port de Plaisance Marina is permanently closed. Services are no longer available to all pleasure crafts. Access to the navigational channel and canal is not affected.

Mooring prohibited.

(NW-Q-0356-22)

***617(T)/22 Lac Saint-Louis – Aids to Navigation Temporarily Established**

Reference chart: 1430

Six yellow lighted buoys marking a 400 metres breakwater awash temporarily established at the following coordinates:

| | |
|--------------------------------|--------------------------------|
| 45° 20' 44.5"N 073° 50' 32.9"W | 45° 21' 00.3"N 073° 50' 11.6"W |
| 45° 20' 47.7"N 073° 50' 29.4"W | 45° 21' 05.4"N 073° 50' 07.6"W |
| 45° 20' 50.0"N 073° 50' 24.1"W | 45° 21' 11.8"N 073° 50' 04.6"W |

(NW-Q-0579-22)

***618(T)/22 Point Clark to à Southampton – Aids to Navigation Established**

Reference: Notice 1212(T)/21 is cancelled.

Reference chart: 2291

Twenty-two sub-surface moorings have been removed and replaced by spar buoys at the following coordinates:

| | |
|----------------------------|----------------------------|
| 44° 13.912'N 081° 37.060'W | 44° 22.719'N 081° 32.404'W |
| 44° 13.970'N 081° 37.379'W | 44° 22.933'N 081° 33.992'W |
| 44° 13.981'N 081° 38.188'W | 44° 23.512'N 081° 31.893'W |
| 44° 15.862'N 081° 36.683'W | 44° 23.953'N 081° 32.850'W |
| 44° 15.894'N 081° 37.028'W | 44° 25.270'N 081° 29.521'W |
| 44° 15.885'N 081° 37.468'W | 44° 25.576'N 081° 30.070'W |
| 44° 19.834'N 081° 36.316'W | 44° 26.041'N 081° 30.817'W |
| 44° 19.867'N 081° 36.618'W | 44° 33.449'N 081° 19.640'W |
| 44° 21.668'N 081° 34.609'W | 44° 33.525'N 081° 19.847'W |
| 44° 22.055'N 081° 34.987'W | 44° 34.184'N 081° 21.275'W |

(NW-C-0708-22)

Preliminary Notices

No notices applicable for this edition.

Section 2: Chart Corrections

1203 - Tadoussac à/to Cap Éternité - New Edition - 17-JUN-2011 - NAD 1983 17-JUN-2022

LNM/D. 23-APR-2021

Delete red and white fairway lighted bell pillar buoy Mo(A), marked SAGUE
(See Chart No. 1, Qh)
This notice affects Electronic Navigational Chart: CA379232
48°07'08.8"N 069°36'05.5"W
(Q2022004) LL(1774) DFO(6410656-01)

1220 - Sept-Îles - New Edition - 24-MAR-2021 - NAD 1983 24-JUN-2022

Amend Iso G 2s36m(priv) to read Iso G 4s35m (priv) against light
(See Chart No. 1, P16, P65)
This notice affects Electronic Navigational Chart: CA579008
50°11'40.4"N 066°22'21.4"W
(Q2022015) LL(1665) DFO(6410668-01)

Amend Iso G 2s16m(priv) to read Iso G 4s19m (priv) against light
(See Chart No. 1, P16, P65)
This notice affects Electronic Navigational Chart: CA579008
50°11'41.8"N 066°22'35.3"W
(Q2022016) LL(1664) DFO(6410669-01)

Amend Iso Y 4s10m(priv) to read Iso Y 4s14m (priv) against light
(See Chart No. 1, P16, P65)
This notice affects Electronic Navigational Chart: CA579008
50°11'20.3"N 066°22'14.8"W
(Q2022018) LL(1663.7) DFO(6410670-01)

Amend Iso Y 4s24m(priv) to read Iso Y 4s25m (priv) against light
(See Chart No. 1, P16, P65)
This notice affects Electronic Navigational Chart: CA579008
50°11'11.7"N 066°21'53.7"W
(Q2022019) LL(1663.71) DFO(6410671-01)

1230 - Les Méchins - New Edition - 19-FEB-2010 - NAD 1983 17-JUN-2022

LNM/D. 13-MAY-2022

Delete light (Priv) Fl Y 8m5M
(See Chart No. 1, P1, P16)
This notice affects Electronic Navigational Chart: CA579056
49°00'26.4"N 066°58'28.0"W
(Q2022006) LL(1698) DFO(6410657-01)

Add light Fl Y 6m5M (priv)
(See Chart No. 1, P1, P16)
This notice affects Electronic Navigational Chart: CA579056
49°00'26.8"N 066°58'27.4"W
(Q2022006) LL(1698) DFO(6410657-02)

1311 - Sorel-Tracy à/to Varennes - New Edition - 17-MAY-2019 - NAD 1983 17-JUN-2022

LNM/D. 04-JUN-2021

Amend F G 24m17M to read F G 30m16M against light
(See Chart No. 1, P16)
This notice affects Electronic Navigational Chart: CA479155
45°46'30.3"N 073°21'41.4"W
(Q2021058) LL(2320) DFO(6410653-01)

Amend F G 10m17M to read F G 10m16M against light
(See Chart No. 1, P16)
This notice affects Electronic Navigational Chart: CA479155, CA579146
45°46'46.0"N 073°21'22.4"W
(Q2021059) LL(2319) DFO(6410654-01)

1313 - Batiscan au/to Lac Saint-Pierre - New Edition - 08-MAR-2019 - NAD 1983
24-JUN-2022

LNMD/D. 10-DEC-2021

- Amend F G 10m17M to read F G 10m11M against light 46°21'56.4"N 072°29'50.9"W
(See Chart No. 1, P16)
This notice affects Electronic Navigational Chart: CA479014
(Q2022009) LL(2080) DFO(6410662-01)
- Amend F G 20m17M to read F G 20m11M against light 46°21'54.2"N 072°29'57.0"W
(See Chart No. 1, P16)
This notice affects Electronic Navigational Chart: CA479014
(Q2022010) LL(2081) DFO(6410663-01)
- Amend F G 33m17M to read F G 33m13M against light 46°24'01.1"N 072°27'16.7"W
(See Chart No. 1, P16)
This notice affects Electronic Navigational Chart: CA479014
(Q2022020) LL(2068) DFO(6410672-01)
- Amend F G 19m17M to read F G 19m13M against light 46°23'36.1"N 072°27'44.5"W
(See Chart No. 1, P16)
This notice affects Electronic Navigational Chart: CA479014
(Q2022021) LL(2067) DFO(6410673-01)

1320 - Île du Bic au/to Cap de la Tête au Chien - New Chart - 26-AUG-2011 - NAD 1983
17-JUN-2022

LNMD/D. 13-MAY-2022

- Delete red and white fairway lighted bell pillar buoy Mo(A), marked SAGUE 48°07'08.8"N 069°36'05.5"W
(See Chart No. 1, Qh)
This notice affects Electronic Navigational Chart: CA379232
(Q2022004) LL(1774) DFO(6410656-01)

1430 - Lac Saint-Louis - New Edition - 23-NOV-2018 - NAD 1983
10-JUN-2022

LNMD/D. 19-MAR-2021

- Affix patch 45°22'57.0"N 074°00'09.0"W
Download Patch - https://www.notmar.gc.ca/chsftp/patches/1430_6410625_1_202205090756.pdf
This notice affects Electronic Navigational Chart: CA579229
DFO(6410625-01)
- Affix patch 45°18'19.0"N 073°45'16.5"W
Download Patch - https://www.notmar.gc.ca/chsftp/patches/1430_6410625_2_202205090757.pdf
This notice affects Electronic Navigational Chart: CA479228
DFO(6410625-02)
- Add obstruction, depth unknown, Rep (2021) 45°25'45.9"N 073°46'25.6"W
(See Chart No. 1, I3.2, K40)
This notice affects Electronic Navigational Chart: CA479228
DFO(6410625-03)

1433 - Île St-Régis to/à Croil Islands A-B - New Edition - 26-DEC-2014 - World Geodetic System 1984
03-JUN-2022

LNMD/D. 26-MAR-2021

- Delete red starboard hand conical buoy, marked 24A 44°59'14.0"N 074°47'17.1"W
(See Chart No. 1, Qf)
This notice affects Electronic Navigational Chart: CA473232
(B2022008) DFO(6604864-01)

1433 - Île St-Régis to/à Croil Islands B-C - New Edition - 26-DEC-2014 - World Geodetic System 1984

03-JUN-2022

LNM/D. 26-MAR-2021

Delete red starboard hand conical buoy, marked 24A
(See Chart No. 1, Qf)
This notice affects Electronic Navigational Chart: CA473232
44°59'14.0"N 074°47'17.1"W
(B2022008) DFO(6604864-01)

2042 - A à/to B - New Edition - 28-NOV-2003 - NAD 1983

10-JUN-2022

LNM/D. 12-NOV-2021

Affix patch
Download Patch - https://www.notmar.gc.ca/chsftp/patches/2042_6604865_2_202206061624.pdf
This notice affects Electronic Navigational Chart: CA573010
43°08'27.0"N 079°11'33.3"W
DFO(6604865-02)

2042 - B à/to C - New Edition - 28-NOV-2003 - NAD 1983

10-JUN-2022

LNM/D. 12-NOV-2021

Affix patch
Download Patch - https://www.notmar.gc.ca/chsftp/patches/2042_6604865_1_202205251532.pdf
This notice affects Electronic Navigational Chart: CA573010
43°08'27.0"N 079°11'33.3"W
DFO(6604865-01)

4001 - Gulf of Maine to Strait of Belle Isle / au Detroit de Belle Isle - New Edition - 01-DEC-1995 - NAD 1983

03-JUN-2022

LNM/D. 29-APR-2022

Add submarine cable
(See Chart No. 1, L30.1)
joining 42°18'30.0"N 055°44'15.0"W
42°11'15.0"N 060°42'30.0"W
42°02'30.0"N 061°46'30.0"W
41°54'15.0"N 062°16'30.0"W
41°48'45.0"N 063°07'45.0"W
42°03'15.0"N 065°27'00.0"W
42°17'15.0"N 066°09'15.0"W
and 42°20'15.0"N 067°18'30.0"W
This notice affects Electronic Navigational Chart: CA176030, CA176140, CA276367
DFO(6310081-01)

17-JUN-2022

LNM/D. 03-JUN-2022

Add environmentally sensitive sea area with legend, Laurentian Channel
MPA / ZPM du chenal Laurentien
(See Chart No. 1, N22)
joining 45°34'06.0"N 057°10'30.0"W
45°26'27.0"N 057°11'18.0"W
44°59'02.0"N 056°40'07.0"W
44°59'49.0"N 056°24'05.0"W
45°20'20.0"N 056°24'07.0"W
46°39'18.0"N 057°37'07.0"W
46°38'58.0"N 057°43'45.0"W
46°44'27.0"N 057°50'48.0"W
46°57'06.0"N 057°59'00.0"W
47°01'27.0"N 058°04'19.0"W
46°56'00.0"N 058°27'47.0"W
47°06'05.0"N 058°45'09.0"W
47°03'22.0"N 059°04'03.0"W
46°46'55.0"N 058°45'44.0"W
46°23'01.0"N 058°01'19.0"W
and 45°34'06.0"N 057°10'30.0"W
This notice affects Electronic Navigational Chart: CA276090, CA276091, CA276271, CA276284
DFO(6310080-01)

4003 - Cape Breton to / à Cape Cod - New Edition - 21-MAR-2003 - NAD 1983
03-JUN-2022

LNMD. 01-APR-2022

Add submarine cable
(See Chart No. 1, L30.1)

joining 42°14'50.0"N 058°15'00.0"W
42°11'10.0"N 060°42'40.0"W
42°02'20.0"N 061°46'20.0"W
41°54'20.0"N 062°16'30.0"W
41°48'40.0"N 063°07'40.0"W
42°03'10.0"N 065°26'50.0"W
42°17'10.0"N 066°09'20.0"W
and 42°20'20.0"N 067°18'30.0"W

This notice affects Electronic Navigational Chart: CA176030, CA176140, CA276367

DFO(6310081-01)

4006 - Newfoundland and Labrador/Terre-Neuve-et-Labrador to Bermuda / aux Bermudes - New Edition - 08-AUG-2003 - NAD 1983
17-JUN-2022

LNMD. 29-APR-2022

Add environmentally sensitive sea area with legend, Laurentian Channel
MPA / ZPM du chenal Laurentien
(See Chart No. 1, N22)

joining 45°34'06.0"N 057°10'30.0"W
45°26'27.0"N 057°11'18.0"W
44°59'02.0"N 056°40'07.0"W
44°59'49.0"N 056°24'05.0"W
45°20'20.0"N 056°24'07.0"W
46°39'18.0"N 057°37'07.0"W
46°38'58.0"N 057°43'45.0"W
46°44'27.0"N 057°50'48.0"W
46°57'06.0"N 057°59'00.0"W
47°01'27.0"N 058°04'19.0"W
46°56'00.0"N 058°27'47.0"W
47°06'05.0"N 058°45'09.0"W
47°03'22.0"N 059°04'03.0"W
46°46'55.0"N 058°45'44.0"W
46°23'01.0"N 058°01'19.0"W
and 45°34'06.0"N 057°10'30.0"W

This notice affects Electronic Navigational Chart: CA276090, CA276091, CA276271, CA276284

DFO(6310080-01)

4015 - Sydney to / à Saint-Pierre - New Edition - 28-MAR-2003 - NAD 1983
17-JUN-2022

LNMD. 25-MAR-2022

Add environmentally sensitive sea area with legend, Laurentian Channel
Marine Protected Area / Zone de protection marine du chenal Laurentien
(See Chart No. 1, N22)

joining 45°30'00.0"N 057°10'56.0"W
45°34'06.0"N 057°10'30.0"W
46°23'01.0"N 058°01'20.0"W
46°46'55.0"N 058°45'44.0"W
47°03'23.0"N 059°04'03.0"W
47°06'05.0"N 058°45'09.0"W
46°56'00.0"N 058°27'47.0"W
47°01'27.0"N 058°04'19.0"W
46°57'06.0"N 057°59'00.0"W
46°44'27.0"N 057°50'49.0"W
46°38'58.0"N 057°43'45.0"W
46°39'18.0"N 057°37'07.0"W
and 45°30'00.0"N 056°32'52.0"W

This notice affects Electronic Navigational Chart: CA276090, CA276091, CA276271, CA276284

DFO(6310080-01)

4016 - Saint-Pierre to / à St. John's - New Edition - 06-JUN-2003 - NAD 1983
24-JUN-2022

LNMD. 13-MAY-2022

Add marine farm
(See Chart No. 1, K48.2)

47°18'19.2"N 054°51'23.8"W

This notice affects Electronic Navigational Chart: CA276274, CA376173, CA376176

DFO(6310082-01)

| | | |
|-----|--|--|
| Add | marine farm (See Chart No. 1, K48.2) This notice affects Electronic Navigational Chart: CA276274, CA376173 | 47°19'50.1"N 054°41'42.3"W <i>DFO(6310082-02)</i> |
| Add | marine farm (See Chart No. 1, K48.2) This notice affects Electronic Navigational Chart: CA276274, CA476805 | 47°31'38.8"N 054°23'19.7"W <i>DFO(6310082-03)</i> |
| Add | marine farm (See Chart No. 1, K48.2) This notice affects Electronic Navigational Chart: CA276274, CA476806 | 47°34'24.9"N 054°20'58.3"W <i>DFO(6310082-04)</i> |
| Add | marine farm (See Chart No. 1, K48.2) This notice affects Electronic Navigational Chart: CA276274, CA476079 | 47°38'58.4"N 054°16'53.9"W <i>DFO(6310082-05)</i> |
| Add | marine farm (See Chart No. 1, K48.2) This notice affects Electronic Navigational Chart: CA276274, CA476300 | 47°28'44.3"N 054°11'04.3"W <i>DFO(6310082-06)</i> |
| Add | marine farm (See Chart No. 1, K48.2) This notice affects Electronic Navigational Chart: CA276274, CA476300 | 47°32'30.7"N 054°08'56.7"W <i>DFO(6310082-07)</i> |
| Add | marine farm (See Chart No. 1, K48.2) This notice affects Electronic Navigational Chart: CA276274, CA476300 | 47°34'05.3"N 054°06'58.4"W <i>DFO(6310082-08)</i> |
| Add | MARINE FARMS Numerous Aquaculture sites exist in the Placentia Bay area containing various obstructions. Mariners are advised to maintain a safe distance and exercise caution when navigating in these areas. Avoid anchoring in or too close to current or abandoned aquaculture sites. This notice affects Electronic Navigational Chart: CA276274, CA376173, CA376176 | 47°49'20.4"N 054°43'13.7"W <i>DFO(6310082-09)</i> |

4022 - Cabot Strait and approaches / Déroit de Cabot et les approches - New Edition - 17-JAN-2003 - NAD 1983

17-JUN-2022

LNM/D. 25-MAR-2022

| | | |
|-----|--|---|
| Add | environmentally sensitive sea area with legend, Laurentian Channel Marine Protected Area / Zone de protection marine du chenal Laurentien (See Chart No. 1, N22) | joining 46°34'24.0"N 058°22'29.0"W 46°46'55.0"N 058°45'44.0"W 47°03'22.0"N 059°04'03.0"W 47°06'05.0"N 058°45'09.0"W 46°56'00.0"N 058°27'47.0"W and 46°57'14.0"N 058°22'29.0"W This notice affects Electronic Navigational Chart: CA276090, CA276091, CA276271, CA276284 <i>DFO(6310080-01)</i> |
|-----|--|---|

4024 - Baie des Chaleurs/Chaleur Bay aux/to Îles de la Madeleine - New Edition - 06-MAR-2015 - NAD 1983

17-JUN-2022

LNM/D. 11-FEB-2022

| | | |
|--------|--|--|
| Delete | light F R (See Chart No. 1, P16) This notice affects Electronic Navigational Chart: CA279075, CA379216, CA579084 | 47°33'24.7"N 061°33'43.0"W <i>(Q2021049) LL(1484) DFO(6410639-01)</i> |
|--------|--|--|

Add yellow SADO/ODAS lighted super-buoy FI(5) Y 20s, marked IML-16 47°25'55.2"N 062°33'18.6"W
(See Chart No. 1, Q58)
This notice affects Electronic Navigational Chart: CA279075
(Q2022007) LL(1500.3) DFO(6410639-02)

4045 - Sable Island Bank / Banc de l'Île de Sable to / au St. Pierre Bank / Banc de Saint-Pierre - New Edition - 10-OCT-2003 - NAD 1983
17-JUN-2022 LNM/D. 07-JAN-2022

Add environmentally sensitive sea area with legend, Laurentian Channel joining 46°38'30.0"N 058°30'06.0"W
Marine Protected Area / Zone de protection marine du chenal Laurentien 46°46'55.0"N 058°45'44.0"W
(See Chart No. 1, N22) and 46°51'53.0"N 058°50'56.0"W
This notice affects Electronic Navigational Chart: CA276090, CA276091, CA276271, CA276284
DFO(6310080-01)

Add environmentally sensitive sea area with legend, Laurentian Channel joining 46°05'00.0"N 057°41'30.0"W
Marine Protected Area / Zone de protection marine du chenal Laurentien 45°34'06.0"N 057°10'30.0"W
(See Chart No. 1, N22) 45°26'27.0"N 057°11'18.0"W
44°59'02.0"N 056°40'06.0"W
44°59'49.0"N 056°24'05.0"W
45°20'20.0"N 056°24'07.0"W
and 46°05'00.0"N 057°05'08.0"W
This notice affects Electronic Navigational Chart: CA276090, CA276091
DFO(6310080-02)

4047 - St. Pierre Bank / Banc de Saint-Pierre to / au Whale Bank / Banc de la Baleine - New Edition - 09-OCT-1998 - NAD 1983
17-JUN-2022 LNM/D. 24-SEP-2021

Add environmentally sensitive sea area with legend, Laurentian Channel joining 45°26'53.0"N 056°30'00.0"W
MPA / ZPM du chenal Laurentien 45°20'20.0"N 056°24'07.0"W
(See Chart No. 1, N22) 44°59'49.0"N 056°24'05.0"W
and 44°59'31.0"N 056°30'00.0"W
This notice affects Electronic Navigational Chart: CA276090, CA276091, CA276271, CA276284
DFO(6310080-01)

4202 - Halifax Harbour: Point Pleasant to / à Bedford Basin - New Edition - 26-FEB-2016 - NAD 1983
03-JUN-2022 LNM/D. 06-MAY-2022

Replace obstruction with known depth of 1.2 metres with obstruction with known depth of 1.0 metre 44°37'03.0"N 063°34'22.8"W
(See Chart No. 1, K41)
This notice affects Electronic Navigational Chart: CA576003
DFO(6310063-01)

Add legend See CAUTION / Voir ATTENTION 44°36'59.0"N 063°34'14.0"W
This notice affects Electronic Navigational Chart: CA576003
DFO(6310063-02)

Affix patch 44°36'58.0"N 063°35'16.5"W
Download Patch - https://www.notmar.gc.ca/chsftp/patches/4202_6310063_3_202204200951.pdf
This notice affects Electronic Navigational Chart: CA576003
DFO(6310063-03)

4203 - Halifax Harbour: Black Point to / à Point Pleasant - New Edition - 28-DEC-2018 - NAD 1983
03-JUN-2022 LNM/D. 10-DEC-2021

Replace obstruction with known depth of 1.2 metres with obstruction with known depth of 1.0 metre 44°37'03.0"N 063°34'22.8"W
(See Chart No. 1, K41)
This notice affects Electronic Navigational Chart: CA576003
DFO(6310063-01)

Add legend See CAUTION / Voir ATTENTION 44°36'59.0"N 063°34'14.0"W
This notice affects Electronic Navigational Chart: CA576003
DFO(6310063-02)

Affix patch 44°36'17.3"N 063°34'17.2"W
Download Patch - https://www.notmar.gc.ca/chsftp/patches/4203_6310063_4_202204200953.pdf
DFO(6310063-04)

4255 - Georges Bank / Banc de Georges: Eastern Portion / Partie Est - New Chart - 27-JUL-1990 - NAD 1983
03-JUN-2022 LNM/D. 01-APR-2022

Add submarine cable joining 42°08'54.0"N 065°42'00.0"W
(See Chart No. 1, L30.1) 42°14'48.7"N 066°00'46.1"W
42°17'10.8"N 066°09'17.5"W
and 42°20'13.4"N 067°17'00.0"W
This notice affects Electronic Navigational Chart: CA176030, CA176140, CA276367
DFO(6310081-01)

4416 - Havre de Gaspé - New Edition - 12-JUN-2009 - NAD 1983
10-JUN-2022 LNM/D. 26-MAR-2021

Amend Iso Y 2s 5M (Priv) to read FI R 2s3M (priv) against light 48°49'40.5"N 064°28'26.5"W
(See Chart No. 1, P16, P65)
This notice affects Electronic Navigational Chart: CA579089
(Q2021043) LL(1417.4) DFO(6410629-01)

Amend FI G 6s 5M (Priv) to read FI G 2s (priv) against light 48°49'39.3"N 064°28'28.7"W
(See Chart No. 1, P16, P65)
This notice affects Electronic Navigational Chart: CA579089
(Q2021044) LL(1417.5) DFO(6410630-01)

4416 - Marina de Gaspé - New Edition - 12-JUN-2009 - NAD 1983
10-JUN-2022 LNM/D. 26-MAR-2021

Amend Iso Y 2s (Priv) to read FI R 2s (priv) against light 48°49'40.6"N 064°28'26.5"W
(See Chart No. 1, P16, P65)
This notice affects Electronic Navigational Chart: CA579089
(Q2021043) LL(1417.4) DFO(6410629-01)

Amend FI G 6s (Priv) to read FI G 2s (priv) against light 48°49'39.3"N 064°28'28.7"W
(See Chart No. 1, P16, P65)
This notice affects Electronic Navigational Chart: CA579089
(Q2021044) LL(1417.5) DFO(6410630-01)

4468 - Havre de Harrington - New Edition - 15-OCT-2021 - NAD 1983
10-JUN-2022

Amend FI G 6s8m to read FI G 6s11m against light 50°29'33.4"N 059°28'08.5"W
(See Chart No. 1, P16)
This notice affects Electronic Navigational Chart: CA379115
(Q2021048) LL(1559.2) DFO(6410636-01)

4485 - Cap des Rosiers à/to Chandler - New Edition - 17-JUN-2011 - NAD 1983
10-JUN-2022 LNM/D. 30-APR-2021

Delete depth of 4 metres 3 decimetres 48°29'18.9"N 064°15'21.9"W
(See Chart No. 1, I10)
This notice affects Electronic Navigational Chart: CA379086
DFO(6410637-01)

Add depth of 3 metres 5 decimetres 48°29'17.7"N 064°15'20.4"W
(See Chart No. 1, I10)
This notice affects Electronic Navigational Chart: CA379086
DFO(6410637-02)

4615 - Harbours in Placentia Bay / Havres dans Placentia Bay: Petit forte to / à Broad Cove Head - New Edition - 20-AUG-1999 - NAD 1983

24-JUN-2022

LNMD. 25-FEB-2022

Add marine farm limits joining 47°17'38.4"N 054°52'11.9"W
(See Chart No. 1, K48.1) 47°17'33.2"N 054°51'19.9"W
47°18'37.6"N 054°51'00.0"W
47°18'42.9"N 054°51'41.4"W
and 47°17'38.4"N 054°52'11.9"W
This notice affects Electronic Navigational Chart: CA276274, CA376173, CA376176
DFO(6310082-01)

Add marine farm limits joining 47°19'43.9"N 054°42'36.6"W
(See Chart No. 1, K48.1) 47°19'18.0"N 054°42'39.3"W
47°19'08.8"N 054°41'56.9"W
47°19'54.4"N 054°40'52.5"W
47°20'12.7"N 054°41'43.6"W
and 47°19'43.9"N 054°42'36.6"W
This notice affects Electronic Navigational Chart: CA276274, CA376173
DFO(6310082-02)

Affix patch 47°25'16.0"N 054°45'28.0"W
Download Patch - https://www.notmar.gc.ca/chsftp/patches/4615_6310082_10_202204271412.pdf
DFO(6310082-10)

4617 - Red Island to / à Pinchgut Point - New Edition - 30-APR-2010 - NAD 1983

24-JUN-2022

LNMD. 17-DEC-2021

Add marine farm limits joining 47°29'29.4"N 054°10'26.2"W
(See Chart No. 1, K48.1) 47°28'53.3"N 054°11'46.9"W
47°28'30.5"N 054°11'51.8"W
47°27'59.6"N 054°11'25.5"W
47°28'54.9"N 054°09'50.6"W
and 47°29'29.4"N 054°10'26.2"W
This notice affects Electronic Navigational Chart: CA276274, CA476300
DFO(6310082-06)

Add marine farm limits joining 47°31'51.3"N 054°09'25.3"W
(See Chart No. 1, K48.1) 47°31'49.0"N 054°08'30.2"W
47°33'11.2"N 054°08'08.5"W
47°33'13.4"N 054°09'13.2"W
47°32'19.7"N 054°09'34.0"W
47°32'16.0"N 054°09'19.1"W
and 47°31'51.3"N 054°09'25.3"W
This notice affects Electronic Navigational Chart: CA276274, CA476300
DFO(6310082-07)

Add marine farm limits joining 47°34'40.8"N 054°06'17.5"W
(See Chart No. 1, K48.1) 47°34'48.8"N 054°06'55.0"W
47°33'57.2"N 054°07'43.1"W
47°33'34.5"N 054°07'20.0"W
and 47°33'50.5"N 054°06'20.6"W
This notice affects Electronic Navigational Chart: CA276274, CA476300
DFO(6310082-08)

Affix patch 47°25'40.0"N 053°44'28.0"W
Download Patch - https://www.notmar.gc.ca/chsftp/patches/4617_6310082_14_202205051424.pdf
This notice affects Electronic Navigational Chart: CA476300
DFO(6310082-14)

4619 - Presque Harbour to / à Bar Haven Island and / et Paradise Sound - New Edition - 20-NOV-1998 - NAD 1983
24-JUN-2022 LNM/D. 08-OCT-2021

Add marine farm limits joining 47°32'08.4"N 054°23'31.5"W
(See Chart No. 1, K48.1) 47°31'01.7"N 054°24'37.8"W
47°30'52.7"N 054°23'40.5"W
47°31'07.4"N 054°22'52.3"W
47°31'47.4"N 054°22'08.4"W
and 47°32'08.4"N 054°23'31.5"W
This notice affects Electronic Navigational Chart: CA276274, CA476805
DFO(6310082-03)

Add marine farm limits joining 47°35'00.3"N 054°22'04.2"W
(See Chart No. 1, K48.1) 47°33'54.2"N 054°20'46.9"W
47°34'22.3"N 054°19'48.8"W
47°35'22.6"N 054°21'20.0"W
and 47°35'00.3"N 054°22'04.2"W
This notice affects Electronic Navigational Chart: CA276274, CA476806
DFO(6310082-04)

Add marine farm limits joining 47°39'03.2"N 054°18'01.0"W
(See Chart No. 1, K48.1) 47°38'17.0"N 054°16'43.5"W
47°38'58.6"N 054°15'37.3"W
47°39'38.5"N 054°16'58.3"W
and 47°39'03.2"N 054°18'01.0"W
This notice affects Electronic Navigational Chart: CA276274, CA476079
DFO(6310082-05)

Add marine farm limits joining 47°29'29.4"N 054°10'26.2"W
(See Chart No. 1, K48.1) 47°29'00.6"N 054°09'56.5"W
47°28'51.8"N 054°09'56.5"W
47°27'59.6"N 054°11'25.5"W
47°28'30.5"N 054°11'51.8"W
47°28'53.3"N 054°11'46.9"W
and 47°29'29.4"N 054°10'26.2"W
This notice affects Electronic Navigational Chart: CA276274, CA476300
DFO(6310082-06)

Affix patch 47°35'00.0"N 054°24'00.0"W
Download Patch - https://www.notmar.gc.ca/chsftp/patches/4619_6310082_11_202204271422.pdf
This notice affects Electronic Navigational Chart: CA476806
DFO(6310082-11)

4622 - Cape St Mary's to / à Argentià Harbour and / et Jude Island - New Edition - 20-DEC-2019 - NAD 1983
24-JUN-2022 LNM/D. 13-MAY-2022

Add marine farm limits joining 47°19'43.9"N 054°42'36.6"W
(See Chart No. 1, K48.1) 47°19'18.0"N 054°42'39.3"W
47°19'08.8"N 054°41'56.9"W
47°19'54.4"N 054°40'52.5"W
47°20'12.7"N 054°41'43.6"W
and 47°19'43.9"N 054°42'36.6"W
This notice affects Electronic Navigational Chart: CA276274, CA376173
DFO(6310082-02)

Affix patch 46°58'50.0"N 054°00'15.0"W
Download Patch - https://www.notmar.gc.ca/chsftp/patches/4622_6310082_12_202204271424.pdf
DFO(6310082-12)

4624 - Long Island to / à St. Lawrence Harbours - New Edition - 07-JAN-2000 - NAD 1983

24-JUN-2022

LNMD. 13-MAY-2022

Add marine farm limits joining 47°17'38.4"N 054°52'11.9"W
(See Chart No. 1, K48.1) 47°17'33.2"N 054°51'19.9"W
47°18'37.6"N 054°51'00.0"W
47°18'42.9"N 054°51'41.4"W
and 47°17'38.4"N 054°52'11.9"W
This notice affects Electronic Navigational Chart: CA276274, CA376173, CA376176
DFO(6310082-01)

Add marine farm limits joining 47°19'43.9"N 054°42'36.6"W
(See Chart No. 1, K48.1) 47°19'18.0"N 054°42'39.3"W
47°19'08.8"N 054°41'56.9"W
47°19'56.0"N 054°40'59.0"W
47°20'12.7"N 054°41'43.6"W
and 47°19'43.9"N 054°42'36.6"W
This notice affects Electronic Navigational Chart: CA276274, CA376173
DFO(6310082-02)

Add MARINE FARMS Numerous Aquaculture sites exist in the Placentia Bay 47°22'16.8"N 055°12'27.0"W
area containing various obstructions. Mariners are advised to maintain a
safe distance and exercise caution when navigating in these areas. Avoid
anchoring in or too close to current or abandoned aquaculture sites.
This notice affects Electronic Navigational Chart: CA276274, CA376173, CA376176
DFO(6310082-09)

4839 - Head of / Fond de Placentia Bay - New Edition - 28-JAN-2011 - NAD 1983

24-JUN-2022

LNMD. 08-OCT-2021

Add marine farm limits joining 47°39'03.2"N 054°18'01.0"W
(See Chart No. 1, K48.1) 47°38'17.0"N 054°16'43.5"W
47°38'58.6"N 054°15'37.3"W
47°39'38.5"N 054°16'58.3"W
and 47°39'03.2"N 054°18'01.0"W
This notice affects Electronic Navigational Chart: CA276274, CA476079
DFO(6310082-05)

Affix patch 47°47'13.0"N 054°15'42.0"W
Download Patch - https://www.notmar.gc.ca/chsftp/patches/4839_6310082_13_202205051018.pdf
This notice affects Electronic Navigational Chart: CA476079
DFO(6310082-13)

4913 - Caraquet Harbour, Baie de Shippegan and / et Miscou Harbour - New Chart - 07-AUG-1992 - NAD 1983

03-JUN-2022

LNMD. 11-FEB-2022

Amend Iso G to read LFI G against light 47°47'51.3"N 064°55'46.7"W
(See Chart No. 1, P16)
This notice affects Electronic Navigational Chart: CA476275, CA576263
(G2022025) LL(1319.1) DFO(6310086-01)

4920 - Caraquet - New Edition - 14-DEC-2018 - NAD 1983

03-JUN-2022

LNMD. 17-DEC-2021

Amend Iso G 4s5m8M to read LFI G 6s5m8M against light 47°47'51.3"N 064°55'46.7"W
(See Chart No. 1, P16)
This notice affects Electronic Navigational Chart: CA476275, CA576263
(G2022025) LL(1319.1) DFO(6310086-01)

4920 - Shippegan Harbour - New Edition - 14-DEC-2018 - NAD 1983
17-JUN-2022

| | | |
|--------|--|--|
| | | LNM/D. 03-JUN-2022 |
| Add | depth of 1.8 metres (See Chart No. 1, I10) This notice affects Electronic Navigational Chart: CA576269 | 47°42'49.6"N 064°39'39.8"W <i>DFO(6310088-01)</i> |
| Add | depth of 1.8 metres (See Chart No. 1, I10) This notice affects Electronic Navigational Chart: CA576269 | 47°42'55.1"N 064°39'52.9"W <i>DFO(6310088-02)</i> |
| Delete | depth of 2.5 metres (See Chart No. 1, I10) | 47°42'54.4"N 064°40'01.6"W <i>DFO(6310088-03)</i> |
| Add | depth of 1.8 metres (See Chart No. 1, I10) This notice affects Electronic Navigational Chart: CA576269 | 47°42'54.1"N 064°40'03.8"W <i>DFO(6310088-04)</i> |
| Add | depth of 1.2 metres (See Chart No. 1, I10) This notice affects Electronic Navigational Chart: CA576269 | 47°43'04.5"N 064°39'53.7"W <i>DFO(6310088-05)</i> |
| Add | depth of 1 metre (See Chart No. 1, I10) This notice affects Electronic Navigational Chart: CA576269 | 47°43'05.2"N 064°39'58.5"W <i>DFO(6310088-06)</i> |
| Delete | depth of 0.6 metres (See Chart No. 1, I10) | 47°43'09.3"N 064°40'00.0"W <i>DFO(6310088-07)</i> |
| Add | depth of 0.1 metres (See Chart No. 1, I10) This notice affects Electronic Navigational Chart: CA576269 | 47°43'10.1"N 064°40'02.1"W <i>DFO(6310088-08)</i> |

4950 - Îles de la Madeleine - New Edition - 19-JUL-2013 - NAD 1983
17-JUN-2022

| | | |
|--------|--|----------------------------|
| | | LNM/D. 01-OCT-2021 |
| Delete | light F R 15M (See Chart No. 1, P16) This notice affects Electronic Navigational Chart: CA279075, CA379216, CA579084 <i>(Q2021049) LL(1484) DFO(6410639-01)</i> | 47°33'24.7"N 061°33'43.0"W |

4954 - Chenal du Havre de la Grande Entrée - New Edition - 18-MAR-2016 - NAD 1983
17-JUN-2022

| | | |
|--------|--|----------------------------|
| | | LNM/D. 28-MAY-2021 |
| Delete | light F R 10m (See Chart No. 1, P16) This notice affects Electronic Navigational Chart: CA279075, CA379216, CA579084 <i>(Q2021049) LL(1484) DFO(6410639-01)</i> | 47°33'24.7"N 061°33'43.0"W |
| Add | sector light F RWG 8m. Visible through an arc of 3°, red from 27° to 28°, white from 28° to 29° and green from 29° to 30° (See Chart No. 1, P40.1) This notice affects Electronic Navigational Chart: CA579084 <i>(Q2021051) LL(1483.5) DFO(6410640-01)</i> | 47°33'20.9"N 061°33'41.7"W |

| | | |
|---|---|--|
| Add | legend G (See Chart No. 1, P40.1) This notice affects Electronic Navigational Chart: CA579084 | 47°32'08.4"N 061°34'42.5"W <i>DFO(6410640-02)</i> |
| Add | legend W (See Chart No. 1, P40.1) This notice affects Electronic Navigational Chart: CA579084 | 47°32'07.7"N 061°34'40.5"W <i>DFO(6410640-03)</i> |
| Add | legend R (See Chart No. 1, P40.1) This notice affects Electronic Navigational Chart: CA579084 | 47°32'06.8"N 061°34'38.4"W <i>DFO(6410640-04)</i> |
| 4955 - Havre-aux-Maisons - New Edition - 15-JUN-2018 - NAD 1983 | | |
| | 10-JUN-2022 | LNМ/D. 01-JAN-2021 |
| Delete | depth of 2 metres 1 decimetre (See Chart No. 1, I10) This notice affects Electronic Navigational Chart: CA579211 | 47°23'36.1"N 061°50'27.8"W <i>DFO(6410635-01)</i> |
| Add | depth of 1 metre 7 decimetres (See Chart No. 1, I10) This notice affects Electronic Navigational Chart: CA579211 | 47°23'36.8"N 061°50'26.0"W <i>DFO(6410635-02)</i> |
| 4957 - Havre-Aubert - New Edition - 02-JAN-2015 - NAD 1983 | | |
| | 03-JUN-2022 | LNМ/D. 20-NOV-2020 |
| Delete | green port hand spar buoy, marked YK13 (See Chart No. 1, Qg) This notice affects Electronic Navigational Chart: CA579212 | 47°14'09.5"N 061°49'32.2"W <i>(Q2021029) LL(6503.1) DFO(6410607-01)</i> |
| Add | green port hand lighted can buoy FI G, marked YK11 (See Chart No. 1, Qg) This notice affects Electronic Navigational Chart: CA579212 | 47°14'09.6"N 061°49'32.4"W <i>(Q2021030) LL(1502.7) DFO(6410608-01)</i> |
| Reposition | green port hand lighted can buoy Q G, marked YK5 (See Chart No. 1, Qg) This notice affects Electronic Navigational Chart: CA579212 | from 47°14'14.5"N 061°49'28.5"W to 47°14'15.3"N 061°49'27.1"W <i>(Q2021032) LL(1502.2) DFO(6410610-01)</i> |
| Reposition | red starboard hand lighted conical buoy FI R, marked YK12 (See Chart No. 1, Qf) This notice affects Electronic Navigational Chart: CA579212 | from 47°14'11.0"N 061°49'33.0"W to 47°14'11.2"N 061°49'33.4"W <i>(Q2021033) LL(1503) DFO(6410611-01)</i> |
| Reposition | green port hand spar buoy, marked YK23 (See Chart No. 1, Qg) This notice affects Electronic Navigational Chart: CA579212 | from 47°14'05.2"N 061°49'37.0"W to 47°14'05.6"N 061°49'37.5"W <i>(Q2021034) DFO(6410612-01)</i> |
| 5003 - Hudson Bay (Southern Portion) and James Bay - New Edition - 29-MAY-2015 - Unknown | | |
| | 03-JUN-2022 | |
| Delete | depth of 15 fathoms, Rep (1973) (See Chart No. 1, I10) | 57°48'06.4"N 077°13'00.4"W <i>DFO(6604860-01)</i> |

| | | |
|--------|---|--|
| Delete | depth of 36 fathoms (See Chart No. 1, I10) | 57°20'35.3"N 077°00'01.7"W <i>DFO(6604860-02)</i> |
| Delete | depth of 13 fathoms (See Chart No. 1, I10) | 57°27'47.9"N 076°52'00.0"W <i>DFO(6604860-03)</i> |
| Delete | depth of 21 fathoms (See Chart No. 1, I10) | 57°29'56.1"N 077°03'33.6"W <i>DFO(6604860-04)</i> |
| Add | depth of 9 fathoms (See Chart No. 1, I10) | 57°29'17.0"N 076°55'48.1"W <i>DFO(6604860-10)</i> |
| Add | depth of 12 fathoms (See Chart No. 1, I10) | 57°28'12.1"N 076°52'25.3"W <i>DFO(6604860-11)</i> |
| Add | depth of 14 fathoms (See Chart No. 1, I10) | 57°48'39.4"N 077°13'48.2"W <i>DFO(6604860-12)</i> |
| Add | depth of 15 fathoms (See Chart No. 1, I10) | 57°21'03.6"N 077°00'17.8"W <i>DFO(6604860-13)</i> |
| Add | depth of 19 fathoms (See Chart No. 1, I10) | 57°30'08.0"N 077°02'01.4"W <i>DFO(6604860-14)</i> |

5300 - Baie D'Ungava / Ungava Bay - New Edition - 28-MAY-2004 - Unknown
24-JUN-2022

| | | |
|--------|--|--|
| | | LNM/D. 16-MAR-2018 |
| Add | depth of 8 fathoms 2 feet (See Chart No. 1, I10) | 59°18'35.7"N 068°49'39.7"W <i>DFO(6604866-01)</i> |
| Delete | depth of 11 fathoms (See Chart No. 1, I10) | 59°15'47.0"N 068°46'06.7"W <i>DFO(6604866-03)</i> |
| Add | depth of 9 fathoms 4 feet (See Chart No. 1, I10) | 59°16'24.5"N 068°45'27.1"W <i>DFO(6604866-04)</i> |
| Add | depth of 10 fathoms (See Chart No. 1, I10) | 59°31'25.4"N 069°09'03.0"W <i>DFO(6604866-06)</i> |
| Delete | depth of 14 fathoms (See Chart No. 1, I10) | 59°14'10.8"N 068°33'32.6"W <i>DFO(6604866-07)</i> |
| Add | depth of 10 fathoms 1 foot (See Chart No. 1, I10) | 59°14'43.7"N 068°33'37.2"W <i>DFO(6604866-08)</i> |
| Delete | depth of 95 fathoms (See Chart No. 1, I10) | 61°30'18.0"N 065°22'09.0"W <i>DFO(6604866-09)</i> |

Add depth of 14 fathoms
(See Chart No. 1, I10) 61°30'42.3"N 065°22'26.2"W
DFO(6604866-10)

Add depth of 19 fathoms
(See Chart No. 1, I10) 61°32'51.2"N 065°26'52.8"W
DFO(6604866-11)

5348 - Approches à/Approaches to Hopes Advance Bay - New Edition - 05-NOV-1976 - Unknown
24-JUN-2022

LNMD. 24-JUL-2020

Add depth of 8 fathoms 2 feet
(See Chart No. 1, I10) 59°18'35.7"N 068°49'39.7"W
DFO(6604866-01)

Add depth of 8 fathoms 3 feet
(See Chart No. 1, I10) 59°18'01.7"N 068°49'48.1"W
DFO(6604866-02)

Add depth of 9 fathoms 4 feet
(See Chart No. 1, I10) 59°16'24.5"N 068°45'27.1"W
DFO(6604866-04)

Delete depth of 13 fathoms
(See Chart No. 1, I10) 59°31'28.8"N 069°09'10.3"W
DFO(6604866-05)

Add depth of 10 fathoms
(See Chart No. 1, I10) 59°31'25.4"N 069°09'03.0"W
DFO(6604866-06)

Add depth of 10 fathoms 1 foot
(See Chart No. 1, I10) 59°14'43.7"N 068°33'37.2"W
DFO(6604866-08)

5376 - Approches à/Approaches to Rivière Koksoak - New Edition - 13-NOV-2020 - World Geodetic System 1984
24-JUN-2022

Delete depth of 13 metres
(See Chart No. 1, I10)
This notice affects Electronic Navigational Chart: CA373503
58°52'02.1"N 068°07'55.4"W
DFO(6604869-01)

Add depth of 11.5 metres
(See Chart No. 1, I10)
This notice affects Electronic Navigational Chart: CA373503
58°52'03.6"N 068°08'02.6"W
DFO(6604869-02)

5412 - Erik Cove to/à Nuvuk Harbour including/y compris Digges Islands - New Edition - 26-NOV-2004 - NAD 1983
24-JUN-2022

LNMD. 18-SEP-2020

Delete depth of 17 fathoms
(See Chart No. 1, I10) 62°32'02.9"N 078°05'13.5"W
DFO(6604868-01)

Add depth of 13 fathoms
(See Chart No. 1, I10) 62°32'00.5"N 078°05'11.3"W
DFO(6604868-02)

Delete depth of 13 fathoms
(See Chart No. 1, I10) 62°32'17.4"N 078°09'32.3"W
DFO(6604868-03)

| | | |
|---|--|--|
| Add | depth of 11 fathoms (See Chart No. 1, I10) | 62°32'15.7"N 078°09'39.1"W <i>DFO(6604868-04)</i> |
| 5505 - Bélanger Island à/to Cotter Island - New Edition - 04-AUG-2017 - World Geodetic System 1984 | | |
| 03-JUN-2022 | | LNMD. 13-DEC-2019 |
| Delete | obstruction with known depth of 27.3 metres, Rep (1973) (See Chart No. 1, K41) This notice affects Electronic Navigational Chart: CA273352 | 57°48'12.5"N 077°13'52.7"W <i>DFO(6604858-01)</i> |
| Delete | depth of 36 metres (See Chart No. 1, I10) This notice affects Electronic Navigational Chart: CA273352 | 57°20'59.3"N 077°00'23.3"W <i>DFO(6604858-02)</i> |
| Delete | depth of 54 metres (See Chart No. 1, I10) This notice affects Electronic Navigational Chart: CA273352 | 57°28'05.9"N 076°52'44.0"W <i>DFO(6604858-03)</i> |
| Delete | depth of 76 metres (See Chart No. 1, I10) This notice affects Electronic Navigational Chart: CA273352 | 57°29'16.7"N 076°55'33.8"W <i>DFO(6604858-04)</i> |
| Add | depth of 16.5 metres (See Chart No. 1, I10) This notice affects Electronic Navigational Chart: CA273352 | 57°29'17.0"N 076°55'48.1"W <i>DFO(6604858-05)</i> |
| Add | depth of 25.3 metres (See Chart No. 1, I10) This notice affects Electronic Navigational Chart: CA273352 | 57°48'39.4"N 077°13'48.2"W <i>DFO(6604858-06)</i> |
| Add | depth of 27.3 metres (See Chart No. 1, I10) This notice affects Electronic Navigational Chart: CA273352 | 57°21'03.6"N 077°00'17.8"W <i>DFO(6604858-07)</i> |
| Add | depth of 22.1 metres (See Chart No. 1, I10) This notice affects Electronic Navigational Chart: CA273352 | 57°28'12.1"N 076°52'25.3"W <i>DFO(6604858-08)</i> |
| Add | depth of 13.5 metres (See Chart No. 1, I10) This notice affects Electronic Navigational Chart: CA273352 | 56°43'23.3"N 076°35'41.6"W <i>DFO(6604858-09)</i> |
| Add | depth of 32 metres (See Chart No. 1, I10) This notice affects Electronic Navigational Chart: CA273352 | 56°46'53.2"N 076°36'17.2"W <i>DFO(6604858-10)</i> |
| Add | depth of 17.4 metres (See Chart No. 1, I10) This notice affects Electronic Navigational Chart: CA273352 | 56°44'04.1"N 076°35'47.0"W <i>DFO(6604858-11)</i> |

Add depth of 34 metres 57°30'08.0"N 077°02'01.4"W
(See Chart No. 1, I10)
This notice affects Electronic Navigational Chart: CA273352
DFO(6604858-12)

5705 - Cape Dufferin to à Broughton Island - New Edition - 13-MAY-1983 - Unknown
03-JUN-2022

LNMD. 28-FEB-2014

Delete depth of 42 fathoms 57°29'23.9"N 076°55'36.6"W
(See Chart No. 1, I10)
DFO(6604860-05)

Delete depth of 15 fathoms, Repd 1973 57°48'16.1"N 077°13'57.3"W
(See Chart No. 1, I10)
DFO(6604860-06)

Delete depth of 43 fathoms 57°21'12.3"N 077°00'35.0"W
(See Chart No. 1, I10)
DFO(6604860-07)

Delete depth of 21 fathoms 57°20'59.3"N 076°59'53.9"W
(See Chart No. 1, I10)
DFO(6604860-08)

Delete depth of 30 fathoms 57°28'12.4"N 076°52'44.1"W
(See Chart No. 1, I10)
DFO(6604860-09)

Add depth of 9 fathoms 57°29'17.0"N 076°55'48.1"W
(See Chart No. 1, I10)
DFO(6604860-10)

Add depth of 12 fathoms 57°28'12.1"N 076°52'25.3"W
(See Chart No. 1, I10)
DFO(6604860-11)

Add depth of 14 fathoms 57°48'39.4"N 077°13'48.2"W
(See Chart No. 1, I10)
DFO(6604860-12)

Add depth of 15 fathoms 57°21'03.6"N 077°00'17.8"W
(See Chart No. 1, I10)
DFO(6604860-13)

Add depth of 19 fathoms 57°30'08.0"N 077°02'01.4"W
(See Chart No. 1, I10)
DFO(6604860-14)

8005 - Georges Bank - New Edition - 20-JUN-2003 - NAD 1983
03-JUN-2022

LNMD. 01-APR-2022

Add submarine cable 42°06'04.0"N 065°32'58.0"W
(See Chart No. 1, L30.1) 42°14'49.0"N 066°00'46.0"W
42°17'11.0"N 066°09'17.0"W
and 42°20'17.0"N 067°18'26.0"W
This notice affects Electronic Navigational Chart: CA176030, CA176140, CA276367
DFO(6310081-01)

**8006 - Scotian Shelf / Plate-Forme Néo-Écossaise: Browns Bank to Emerald Bank / Banc de Brown au Banc D'Émeraude
- New Edition - 14-FEB-2003 - NAD 1983**

03-JUN-2022

LN/D. 01-APR-2022

Add submarine cable
(See Chart No. 1, L30.1)

joining 41°50'28.0"N 063°19'20.0"W
42°03'11.0"N 065°26'52.0"W
42°06'10.0"N 065°33'21.0"W
42°14'49.0"N 066°00'46.0"W
42°17'11.0"N 066°09'17.0"W
and 42°18'25.0"N 066°36'01.0"W

This notice affects Electronic Navigational Chart: CA176030, CA176140, CA276367

DFO(6310081-01)

Section 3: Radio Aids to Marine Navigation Corrections

***619/22 Radio Aids to Marine Navigation 2022 (Atlantic, St. Lawrence, Great Lakes, Lake Winnipeg, Arctic and Pacific)**

Page 1-2

ADD AS FOLLOWS:

1.1.4 New Electronic Form for ECAREG Advanced Offshore Reporting

Eastern Canada Vessel Traffic Services Zone (ECAREG) is now accepting ECAREG Zone Reports (RAMN 3.8.2 refers) using the Microsoft Excel form available at <https://e-navigation.canada.ca/topics/traffic/cvms/ecareg-en>. This report shall be submitted directly to ECAREG by email at HLXECAREG1@INNAV.GC.CA or to the nearest CCG MCTS Centre.

For accuracy, please ensure that reports are completed using the correct version of the report form before submitting to ECAREG. The latest version of the report can be downloaded from the website noted above.

Page 3-14

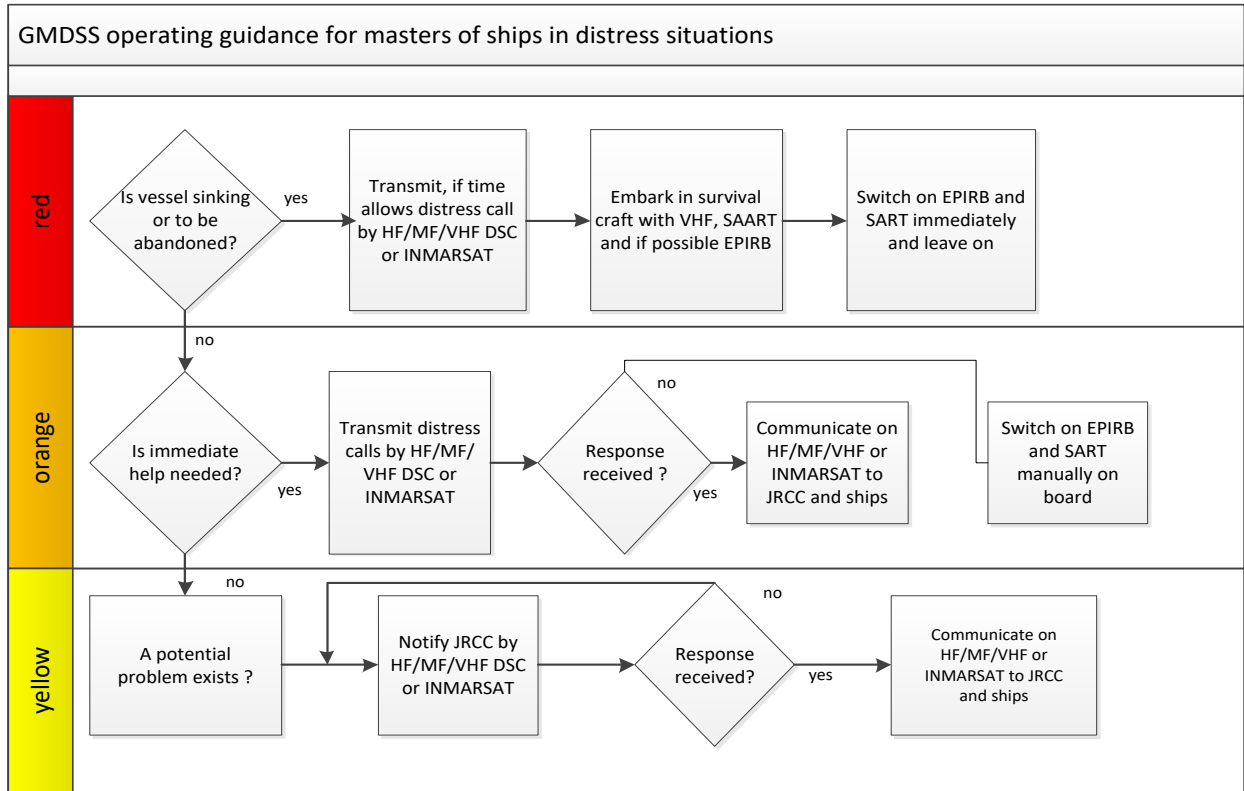
AMEND AS FOLLOWS:

3.8.2 ECAREG Zone Report

ECAREG zone reports shall be completed using the electronic form available at <https://e-navigation.canada.ca/topics/traffic/cvms/ecareg-en>. All reports shall be communicated directly to ECAREG via email to HLXECAREG1@INNAV.GC.CA or to the nearest CCG MCTS Centre. All times given in ECAREG zone reports shall be Coordinated Universal Time (UTC).

Page 4-26

DELETE: Figure 4-7 - GMDSS Operating Guidance for Masters of Ships in Distress Situations



1. EPIRB should float-free and activate automatically if it cannot be taken into survival craft.
2. Where necessary, ships should use any appropriate means to alert other ships.
3. Nothing above is intended to preclude the use of any and all available means of distress alerting.

Page 4-28

AMEND :

Figure 4-8 - Operation Guidance for Masters of Ships in Distress or Urgency Situations

TO READ:

Figure 4-7 - Operation Guidance for Masters of Ships in Distress or Urgency Situations

Page 4-29

AMEND :

Figure 4-9 - Operation Guidance for Masters of Ships Observing Another Vessel Apparently in Danger

TO READ:

Figure 4-8 - Operation Guidance for Masters of Ships Observing Another Vessel Apparently in Danger

Page 4-33

AMEND:

Figure 4-10 - Flow Diagram 1 (COMSAR/Circ.25)

TO READ:

Figure 4-9 - Flow Diagram 1 (COMSAR/Circ.25)

Page 4-34

AMEND:

Figure 4-11 - Flow Diagram 2 (COMSAR/Circ.25)

TO READ:

Figure 4-10 - Flow Diagram 2 (COMSAR/Circ.25)

Page 4-40

AMEND:

4.2.8 Differential Global Positioning System (DGPS)

...

[Figure 4-](#), [Figure 4-](#), [Figure 4-](#), and [Figure 4-15](#) show the nominal coverage from existing Canadian broadcast stations. Users should be aware that coverage is subject to short and long term variations due to environmental and seasonal conditions.

TO READ:

4.2.8 Differential Global Positioning System (DGPS)

...

[Figure 4-](#), [Figure 4-](#), [Figure 4-](#), and [Figure 4-](#) show the nominal coverage from existing Canadian broadcast stations. Users should be aware that coverage is subject to short and long term variations due to environmental and seasonal conditions.

Page 4-42

AMEND:

Figure 4-12 - DGPS Coverage - Atlantic Region

TO READ:

Figure 4-11 - DGPS Coverage - Atlantic Region

Page 4-43

AMEND:

Figure 4-13 - DGPS Coverage – Central Region – St. Lawrence Sector

TO READ:

Figure 4-12 - DGPS Coverage – Central Region – St. Lawrence Sector

Page 4-44

AMEND:

Figure 4-14 - DGPS Coverage - Central Region – Great Lakes Sector

TO READ:

Figure 4-13 - DGPS Coverage - Central Region – Great Lakes Sector

Page 4-45

AMEND:

Figure 4-15 - DGPS Coverage - Western Region

TO READ:

Figure 4-14 - DGPS Coverage - Western Region

Page 4-52

AMEND:

Figure 4-16 - Individual NAVTEX Transmitters – Coverage and Service Areas

Figure 4-16 a) Digby Island

TO READ:

Figure 4-15 - Individual NAVTEX Transmitters – Coverage and Service Areas

Figure 4-15 a) Digby Island

Page 4-53

AMEND:

Figure 4-16 b) Amphitrite Point

TO READ:

Figure 4-15 b) Amphitrite Point

Page 4-54

AMEND:

Figure 4-16 c) Pass Lake

TO READ:

Figure 4-15 c) Pass Lake

Page 4-55

AMEND:

Figure 4-16 d) Ferndale

TO READ:

Figure 4-15 d) Ferndale

Page 4-56

AMEND:

Figure 4-16 e) Moisie

TO READ:

Figure 4-15 e) Moisie

Page 4-57

AMEND:

Figure 4-16 f) Chebogue

TO READ:

Figure 4-15 f) Chebogue

Page 4-58

AMEND:

Figure 4-16 g) Port Caledonia

TO READ:

Figure 4-15 g) Port Caledonia

Page 4-59

AMEND:

Figure 4-16 h) Robin Hood Bay

TO READ:

Figure 4-15 h) Robin Hood Bay

Page 4-60

AMEND:

Figure 4-16 i) Cartwright

TO READ:

Figure 4-15 i) Cartwright

Page 4-61

AMEND:

Figure 4-16 j) Iqaluit

TO READ:

Figure 4-15 j) Iqaluit

Page 4-62

AMEND:

Figure 4-17 - Regional NAVTEX Overview – Coverage and Service Areas

Figure 4-17 a) Western Region

TO READ:

Figure 4-16 - Regional NAVTEX Overview – Coverage and Service Areas

Figure 4-16 a) Western Region

Page 4-63

AMEND:

Figure 4-17 b) Great Lakes Region

TO READ:

Figure 4-16 b) Great Lakes Region

Page 4-64

AMEND:

Figure 4-17 c) Gulf of St. Lawrence and Atlantic Region

TO READ:

Figure 4-16 c) Gulf of St. Lawrence and Atlantic Region

Page 4-64

AMEND:

Figure 4-17 d) Atlantic Region: Newfoundland and Labrador

TO READ:

Figure 4-16 d) Atlantic Region: Newfoundland and Labrador

Page 4-65

AMEND:

Figure 4-17 e) Arctic Region

TO READ:

Figure 4-16 e) Arctic Region

Page 4-66

AMEND:

Figure 4-18 - Canadian NAVAREA Zones and Broadcast Areas

TO READ:

Figure 4-17 - Canadian NAVAREA Zones and Broadcast Areas

Page 4-70

AMEND:

Figure 4-19 - World-Wide Navigational Warning Service - NAVAREAs

TO READ:

Figure 4-19 - World-Wide Navigational Warning Service – NAVAREAs

Page 4-78

AMEND LINK:

4.3.11 Inspection of Radio Apparatus

...

Applications for radio inspections of Non-Delegated Canadian ships should be filed with the Canadian Coast Guard. The form entitled: [Application for Radio Inspection, Compulsory Fitted Ships \(FP-5286-E\)](#) should be used for this purpose. Such request by owners, agents or masters should be received by the Canadian Coast Guard at least three working days in advance of the date requested for inspection.

Section 4: Canadian Sailing Directions Corrections

The following **Canadian Sailing Directions** volumes have recently been updated on the [Canadian Hydrographic Service website](#).

| No. | Title |
|-----------------------|--|
| Atlantic Coast | |
| ATL101 | Newfoundland, Northeast and East Coasts |
| ATL102 | Newfoundland, East and South Coasts |
| ATL103 | Newfoundland, Southwest Coast |
| ATL105 | Cape Canso to Cape Sable (including Sable Island) |
| ATL108 | Gulf of St. Lawrence (Southwest Portion) |
| ATL109 | Gulf of St. Lawrence (Northeast Portion) |
| ATL111 | St. Lawrence River, Île Verte to Québec and Fjord du Saguenay |
| ATL112 | St. Lawrence River, Cap-Rouge to Montréal and Rivière Richelieu |
| ATL120 | Labrador, Camp Islands to Hamilton Inlet (including Lake Melville) |
| Pacific Coast | |
| PAC200 | General Information, Pacific Coast |
| PAC201 | Juan de Fuca Strait and Strait of Georgia |

Each volume includes a section entitled “Record of Changes” which lists all updates that are incorporated during the current calendar year.

Section 5: List of Lights, Buoys and Fog Signals Corrections

The amendments are highlighted and deletions are crossed out. For general and region-specific information on the List of Lights, click on the following links: [Newfoundland and Labrador Coast](#), [Atlantic Coast](#), [Inland Waters](#) and [Pacific Coast](#).

| No. | Name | Position ----- Latitude N. Longitude W. | Light Characteristics | Focal Height in m. above water | Nomi- nal Range | Description ----- Height in meters above ground | Remarks ----- Fog Signals |
|-----|------|--|--------------------------|--|-----------------------|--|---------------------------------|
|-----|------|--|--------------------------|--|-----------------------|--|---------------------------------|

NEWFOUNDLAND AND LABRADOR COAST

NOTRE DAME BAY (LL 326 – 346.36, 354 – 395)

| | | | | | | | |
|-----------------------------|--------------------|---------------------------|---------|------|---|--|---|
| 364.8 H0623.5 | Gappy Island Light | 49 46 31.5 054 16 43.8 | Fl W 3s | 24.2 | 5 | Square skeleton tower, red and white rectangular daymark. 4.3 | Flash 1 s; eclipse 2 s. Seasonal. Chart:4820 Edn 06/22 (N22-061) |
|-----------------------------|--------------------|---------------------------|---------|------|---|--|---|

ATLANTIC COAST

CAPE BRETON ISLAND, N.S. (LL 704.85 – 882.5)

| | | | | | | | |
|----------------|-------------------------|--|---------|-----|---|---|---|
| 719.1 H3401 | Cowley Point Breakwater | W. side of inlet, on end of breakwater. 45 30 06.3 060 57 47.5 | Fl G 4s | 4.9 | 4 | Cylindrical mast, 2 green and white square daymark, one facing 011° and one facing 154°. 3.8 | Operates at night only. Flash 1 s; eclipse 3 s. Chart:4308 Edn 06/22 (G22-029) |
|----------------|-------------------------|--|---------|-----|---|---|---|

GULF OF ST. LAWRENCE (LL 1169.1 – 1426, 1477.5 – 1584)

| | | | | | | | |
|-------------------|---|--|----------|-------|-------|--|--|
| 1238.13 | Tabusintac light buoy TA6 | 47 18 27.2 064 55 45.0 | Q R 1s | | | Red spar, marked "TA6". | Buoy may be repositioned due to shifting channel. Seasonal. Chart:N/A Edn 06/22 (G22-030) |
| 1239.12 | Tabusintac light buoy TA5 | 47 18 28.2 064 55 48.7 | Q G 1s | | | Green spar, marked "TA5". | Seasonal. Chart:N/A Edn 06/22 (G22-031) |
| 1246.8 H1526.4 | Pokemouche Gully Wharf | On SW. corner. 47 40 20.3 064 48 42.9 | Fl R 4s | 5.7 | 4 | Pipe swing pole, red and white triangular daymark. | Seasonal. Chart:N/A Edn 06/22 (G22-028) |
| 1319.1 H1584 | Young Wharf West | On NW. corner of wharf. 47 47 51.3 064 55 46.7 | LFl G 6s | 5.4 | 8 | Pipe swing pole. 4.9 | Flash 2 s; eclipse 4 s. Seasonal. Chart:4920 Edn 06/22 (G22-025) |
| 1417.4 H1752.2 | Marina de Gaspé Marina North Breakwater | At marina entrance, on N. breakwater. 48 49 40.5 064 28 26.5 | Fl R 2s | 7.0 | 3 | Red and white square skeleton tower. 5.0 | Operates at night only. Private aid. Privately maintained by Club nautique Jacques-Cartier de Gaspé. Seasonal. Chart:4416 Edn 06/22 (Q21-043) |

Notices to Mariners – Monthly Eastern Edition
Section 5: List of Lights, Buoys and Fog Signals Corrections

| No. | Name | Position ----- Latitude N. Longitude W. | Light Characteristics | Focal Height in m. above water | Nomi- nal Range | Description ----- Height in meters above ground | Remarks ----- Fog Signals |
|-------------------|--|---|--------------------------|--|-----------------------|--|---|
| 1417.5 H1752.4 | Marina de Gaspé Marina South pier | At marina entrance, on S. pier. 48 49 39.3 064 28 28.7 | Fl G 2s | 7.0 | | Red and white square skeleton tower. 5.0 | Flash 0.5 s; eclipse 1.5 s. Operates at night only. Private Aid. Privately maintained by Club nautique Jacques-Cartier de Gaspé. Seasonal. Chart:4416 Edn 06/22 (Q21-044) |
| 1483 H888 | Grande Entrée range | | | | | | Delete from list. |
| 1484 H888.1 | | | | | | | Delete from list. Chart:4954 Edn 06/22 (Q20-020, Q21-049) |
| 1483.5 | Grande-Entrée | Les Îles-de-la- Madeleine. 47 33 20.9 061 33 41.7 | F R W G | 8.0 | | 12 Skeleton tower, red and white rectangular daymark. 6.3 | Visible on an arc of 3°. Red from 26.7° to 27.7°; white from 27.7° to 28.7°; green from 28.7° to 29.7°. Operates 24 h. Year round. Chart:4954 Edn 06/22 (Q21-051) |
| 1500.3 | Banc Bradelle Scientific light buoy IML-16 | 47 25 55.2 062 33 18.6 | Fl(5) Y 20s | | | Yellow ODAS, marked "IML-16". | Seasonal. Chart:4024 Edn 06/22 (Q22-007) |
| 1502.2 | Havre Aubert light buoy YK5 | Cap Gridley. 47 14 15.3 061 49 27.1 | Q G 1s | | | Green, marked "YK5". | (Winter spar.) Seasonal. Chart:4957 Edn 06/22 (Q21-032) |
| 1502.7 | Havre Aubert light buoy YK11 | Cap Gridley. 47 14 09.6 061 49 32.4 | Fl G 4s | | | Green, marked "YK11". | Seasonal. Chart:4957 Edn 06/22 (Q21-030) |
| 1503 | Havre Aubert light buoy YK12 | Cap Gridley. 47 14 11.2 061 49 33.4 | Fl R 4s | | | Red, marked "YK12". | (Winter spar.) Seasonal. Chart:4957 Edn 06/22 (Q21-033) |
| 1559.2 H1900.4 | Île de l'Entrée | NW. point of island. 50 29 33.5 059 28 08.5 | Fl G 6s | 10.6 | 6 | Square skeleton tower. 6.6 | Flash 1 s; eclipse 5 s. Year round. Position in NAD83. Chart:4468 Edn 06/22 (Q21-048) |

Notices to Mariners – Monthly Eastern Edition
Section 5: List of Lights, Buoys and Fog Signals Corrections

| No. | Name | Position ----- Latitude N. Longitude W. | Light Characteristics | Focal Height in m. above water | Nomi- nal Range | Description ----- Height in meters above ground | Remarks ----- Fog Signals |
|---|--|--|--------------------------|--|-----------------------|--|--|
| ST. LAWRENCE RIVER (LL 1584.5 – 1772, 1823.8 – 2185.7, 2273 – 2365.95) | | | | | | | |
| 1663.7 H1994.6 | Sept-Îles, Iron Ore range No. 2 | On an hangar at Dock no. 2. 50 11 20.3 066 22 14.8 | Iso Y 4s | 13.6 | | Mast, orange daymark with black vertical stripe. 12.1 | Private aid. Privately maintained by Iron Ore Company of Canada. Visible in line of range. Operates 24 h. Year round. |
| 1663.71 H1994.61 | | N. of Pointe aux Basques. 121°48' 495.8 m from front. | Iso Y 4s | 25.3 | | Mast, orange daymark with black vertical stripe. 23.8 | Private aid. Privately maintained by Iron Ore Company of Canada. Visible in line of range. Operates 24 h. Year round. |
| Chart:1220 Edn 06/22 (Q22-018, 019) | | | | | | | |
| 1664 H1994 | Sept-Îles, Iron Ore range | Dock no. 5. 50 11 41.8 066 22 35.3 | Iso G 4s | 19.1 | | Cylindrical mast, orange daymark with black vertical stripe. 17.7 | Private aid. Privately maintained by Iron Ore Company of Canada. Visible in line of range. Operates 24 h. Year round. |
| 1665 H1994.1 | | 097°41' 280.2 m from front. | Iso G 4s | 34.6 | | Cylindrical mast, orange daymark with black vertical stripe. 33.2 | Private aid. Privately maintained by Iron Ore Company of Canada. Visible in line of range. Operates 24 h. Year round. |
| Chart:1220 Edn 06/22 (Q22-015, 016) | | | | | | | |
| 1698 H2032 | Le Gros Méchins Wharf | On NE. dolphin. 49 00 26.8 066 58 27.4 | Fl Y 4s | 6.1 | 5 | Square skeleton tower. 6.6 | Operates at night only. Private aid. Privately maintained by Verreault Navigation Inc. Seasonal. |
| Chart:1230 Edn 06/22 (Q22-006) | | | | | | | |
| 2067 H2390 | Route de Lottinville range | Pointe Lottinville. 46 23 36.1 072 27 44.5 | F G | 18.6 | 13 | Square skeleton tower, orange slatwork daymark with black vertical stripe. 9.4 | Emergency mode. Visible in line of range. Operates 24 h. Year round. |
| 2068 H2390.1 | | 037°31' 975.2 m from front. | F G | 33.1 | 13 | Skeleton tower, orange slatwork daymark with black vertical stripe. 23.1 | Emergency mode. Visible in line of range. Operates 24 h. Year round. |
| Chart:1313 Edn 06/22 (Q22-020, 021) | | | | | | | |
| 2080 H2388 | Cap-de-la- Madeleine Wharf range | On SW. corner of wharf. 46 21 56.4 072 29 50.9 | F G | 10.3 | 11 | Green square skeleton tower, orange slatwork daymark with black vertical stripe. 7.6 | Emergency mode. Visible in line of range. Operates 24 h. Year round. |
| 2081 H2388.1 | | 242°37' 147.0 m from front. | F G | 19.9 | 11 | Square skeleton tower, orange slatwork daymark with black vertical stripe. 12.8 | Emergency mode. Visible in line of range. Operates 24 h. Year round. |
| Chart:1313 Edn 06/22 (Q22-009, 010) | | | | | | | |

Notices to Mariners – Monthly Eastern Edition
 Section 5: List of Lights, Buoys and Fog Signals Corrections

| No. | Name | Position ----- Latitude N. Longitude W. | Light Characteristics | Focal Height in m. above water | Nomi- nal Range | Description ----- Height in meters above ground | Remarks ----- Fog Signals |
|-----------------|----------------------------|--|--------------------------|--|-----------------------|---|---|
| 2319 H2476 | Verchères Village range | On NE. end of wharf. 45 46 46.0 073 21 22.4 | F G | 10.0 | 16 | Skeleton tower, fluorescent red daymark with black vertical stripe. 6.0 | Emergency mode. Visible in line of range. Operates 24 h. Year round. |
| 2320 H2476.1 | | 220°21' 633.2 m from front. | F G | 30.8 | 16 | White Square skeleton tower, fluorescent red daymark with black vertical stripe. 24.5 | Emergency mode. Visible in line of range. Operates 24 h. Year round. |

Chart:1311
 Edn 06/22 (Q21-058, 059)

SAGUENAY RIVER (LL 1773 – 1823.4)

1774 Haut-fond Prince
 light and bell buoy
 SAGUE

Delete from list.

Chart:1203
 Edn 06/22 (Q22-004)