



Fisheries and Oceans
Canada

Pêches et Océans
Canada

Canadian
Coast Guard

Garde côtière
canadienne

Notices to Mariners

Edition No. 08/2022
August 26, 2022



Safety First, Service Always

Monthly Eastern Edition

Canada 

Notices to Mariners – Monthly Eastern Edition
Edition No. 08/2022

Aussi disponible en français :
Avis aux navigateurs – Édition mensuelle de l'Est
Édition n° 08/2022

Published under the Authority of:

Canadian Coast Guard Programs
Aids to Navigation and Waterways
Fisheries and Oceans Canada
Montreal, QC H2Y 2E7

For more information, contact Notmar.XNCR@dfo-mpo.gc.ca.

© Her Majesty the Queen in Right of Canada,
as represented by the Minister of Fisheries, Oceans
and the Canadian Coast Guard, 2022.

Cat. No. Fs152-5E-PDF (Electronic PDF, English)
ISSN 1719-7678

Cat. No. Fs152-5F-PDF (Electronic PDF, French)
ISSN 1719-7694

A web version is available here:

<https://www.notmar.gc.ca/monthly> (English)

<https://www.notmar.gc.ca/mensuel> (French)

Explanatory Notes – Notices to Mariners (NOTMAR)

Geographical positions refer directly to the graduations of the largest scale Canadian Hydrographic Service chart (unless otherwise indicated).

Bearings refer to the true compass and are measured clockwise from 000° (North) clockwise to 359°; those relating to lights are from seaward.

Visibility of lights is that in clear weather.

Depths - The units used for soundings (metres, fathoms or feet) are stated in the title of each chart.

Elevations are normally given above Higher High Water, Large Tide (unless otherwise indicated).

Distances may be calculated as follows:

- 1 nautical mile = 1,852 metres (6,076.1 feet)
- 1 statute mile = 1,609.3 metres (5,280 feet)
- 1 metre = 3.28 feet

Temporary and Preliminary Notices to Mariners – Section 1A of *Notices to Mariners*

These notices are indicated by a (T) or a (P), respectively. Please note that nautical charts are not amended by the Canadian Hydrographic Service for temporary (T) and preliminary (P) notices. It is recommended that mariners chart these corrections in pencil. For the list of charts affected by (T) & (P) notices, please refer to the current [Notices to Mariners - Monthly Summary of Temporary and Preliminary Notices](#) publication.

Suggestions and Corrections Form

This form is specifically for suggestions and corrections to Notices to Mariners publications. It is available [online](#) and also in [fillable PDF format](#) included with the monthly publication ZIP file.

To submit comments and suggestions on possible improvements to the various publications and services: Notmar.XNCR@dfo-mpo.gc.ca.

To report chart discrepancies and/or corrections to the *Canadian Sailing Directions* booklets: Fill out the [Marine Information Reporting Form](#) and/or email chsinfo@dfo-mpo.gc.ca.

To report emergencies or navigational hazards: [Contact your nearest MCTS centre](#)

- VHF channel 16 (156.8 MHz)
- MF/HF frequency 2182 kHz/4125 kHz (where available)
- *16 on a cellphone (where available)

NOTMAR Website – Monthly Editions, Chart Corrections and Chart Patches

The NOTMAR website allows users to access the [monthly publications](#), [chart corrections](#), and [chart patches](#).

Users can subscribe for free to the [email notification service](#) to receive notifications when charts of interest are updated, including their patches, as well as when a new Monthly Edition of *Notices to Mariners* is published.

In addition, the monthly publication and related files to download, such as chart patches, can be obtained all together through the download of a single ZIP file.

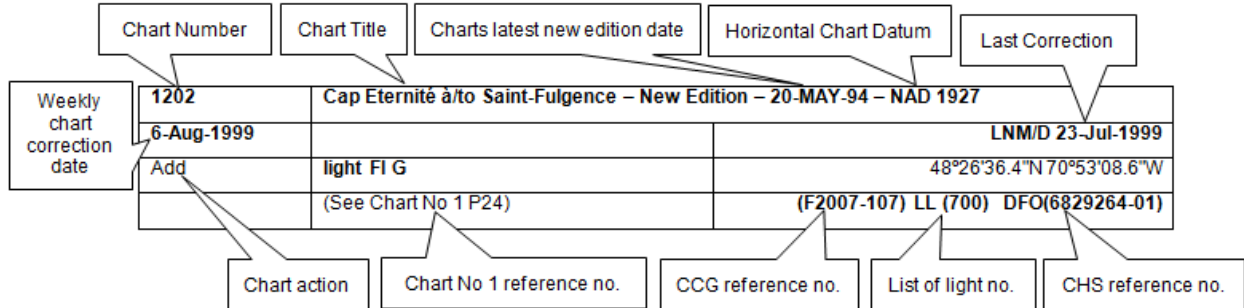
Explanatory Notes – Canadian Hydrographic Service (CHS)

Chart Corrections – Section 2 of *Notices to Mariners*

Corrections to nautical charts will be listed in numerical order by chart number. Each chart correction listed applies only to that particular chart. Related charts, if any, will have their own specific correction listed separately.

Users should also refer to CHS *Chart 1: Symbols, Abbreviations and Terms* for additional information pertaining to the correction of charts.

The illustration below describes the elements that will comprise a typical Section 2 chart correction:



The last correction number is identified with the **LNMD** or **Last Notice to Mariners Number / Date**.

Mariners are advised that only the most critical changes that directly affect safety to navigation are issued in “Section 2 – Chart Corrections.” This limitation is required to ensure that charts remain as clear and easy to read as possible. As a result, mariners may see minor discrepancies of a non-critical nature between information in official publications. For example, a small change in the nominal range or focal height of a light may not result in the production of a chart correction in *Notices to Mariners*, but may result in a correction in the [List of Lights, Buoys and Fog Signals](#) publication.

Note: In the case of a discrepancy between information provided on CHS charts relating to aids to navigation, and the *List of Lights, Buoys and Fog Signals* publication, the latter shall be deemed as containing the most up-to-date information.

Canadian Nautical Charts & Publications

A source list of Canadian nautical charts and publications is published in Notice No. 14 of the *Notices to Mariners Annual Edition 2022*. The source supply and the prices effective at the time of printing are listed. For current chart edition dates, please refer to the following website: www.chs-shc.gc.ca/charts-cartes/paper-papier/index-eng.asp.

Explanatory Notes – Marine Communications and Traffic Services (MCTS)

Navigational Warnings / Notices to Shipping

The Canadian Coast Guard (CCG) is implementing a number of changes to the aids to navigation system in Canada.

These changes are advertised as Navigational Warnings, formerly called Notices to Shipping¹, that are broadcast by the CCG, and are then followed up with Notices to Mariners, then charts are updated by hand correction, reprints or new editions.

Mariners are advised that all relevant Navigational Warnings (NAVWARN) should be kept until superseded by Notices to Mariners or through revised charts issued by the Canadian Hydrographic Service (CHS).

NAVWARN are accessible on the applicable regional page on the CCG Navigational Warnings website at <http://nis.ccg-gcc.gc.ca>.

CHS is reviewing the impact of these changes with CCG and together are preparing an action plan on the issuing of chart revisions.

For further information, contact your regional NAVWARN Issuing Desk.

<p>Atlantic Region (North) *Port aux Basques MCTS Centre</p> <p>“N” Series NAVWARN</p> <p>Canadian Coast Guard 49 Stadium Rd. P.O. Box 99 Port aux Basques, NL A0M 1C0</p> <p>Telephone: 709-695-2168 or 1-800-563-9089 Facsimile: 709-695-7784</p> <p>Email: NAVWARN.MCTSPortAuxBasques@innav.gc.ca</p>	<p>Central Region *Prescott MCTS Centre</p> <p>“Q” and “C” Series NAVWARN</p> <p>Canadian Coast Guard 401 King Street West P.O. Box 1000 Prescott, ON K0E 1T0</p> <p>Telephone: 613-925-0666 Facsimile: 613-925-4519</p> <p>Email: NAVWARN.MCTSPrescott@innav.gc.ca</p>
<p>Atlantic Region (South) *Sydney MCTS Centre</p> <p>“M” Series NAVWARN</p> <p>Canadian Coast Guard 1190 Westmount Road Sydney, NS B1R 2J6</p> <p>Telephone: 902-564-7751 or 1-800-686-8676 Facsimile: 902-564-7662</p> <p>Email: NAVWARN.MCTSSydney@innav.gc.ca</p>	<p>Arctic Region *Iqaluit MCTS Centre</p> <p><i>Operational from approximately mid-May until late December.</i></p> <p>“A” and “H” Series NAVWARN</p> <p>Canadian Coast Guard P.O. Box 189 Iqaluit, NU X0A 0H0</p> <p><u>“A” Series NAVWARN</u> Telephone: 867-979-5269</p> <p><u>“H” Series NAVWARN</u> Telephone: 867-979-0310 Facsimile: 867-979-4264</p> <p>Email: NAVWARN.MCTSIqaluit@innav.gc.ca</p>

*Service available in English and in French.

¹ The expression “Notice to Shipping” was changed to “Navigational Warning” in January 2019.

Table of Contents

Section 1: General and Safety Information **1**

*401/20	Transport Canada – COVID-19 Measures, Updates and Guidance	1
*206/22	Transport Canada – Annual Edition of Notices to Mariners 2022 - Section A3, Notice 7A: Voyage Planning for Vessels Intending to Navigate in Canada's Northern Waters	1
*401/22	Protecting the North Atlantic Right Whale: Speed Restriction Measures in the Gulf of St. Lawrence.....	1
*406/22	Saguenay–St. Lawrence Marine Park and Surrounding Waters – Whale Protection	8
*407/22	Saguenay–St. Lawrence Marine Park - Beluga Whale Protection: Slowdown Area at the Mouth of the Saguenay Fjord and Area Closure at Baie Sainte-Marguerite	10
*801/22	Canadian Hydrographic Service – Nautical Charts.....	12
*802/22	Canadian Hydrographic Service – Electronic Navigational Charts.....	12
*803/22	Transport Canada – Ship Safety Bulletin #18/2022.....	13
*804/22	Canadian Coast Guard Publication – Amendments to the <i>List of Lights, Buoys and Fog Signals</i> Publication: Newfoundland and Labrador Coast.....	13
*805/22	Canadian Coast Guard Publication – <i>List of Lights, Buoys and Fog Signals</i> Publication: Newfoundland and Labrador Coast – All Documents Now Available to Download as a Single PDF Document	13
*806/22	Lake Ontario/Lac Ontario (Western Portion/Partie Ouest) – Unlit Buoys Permanently Established	14
*807/22	Port Severn to/à Parry Sound – Unlit Buoy Permanently Established	15
*808/22	Plans Baie des Chaleurs / Chaleur Bay - Côte sud / South Shore – Unlit Buoy Repositioned .	15

Section 1A: Temporary and Preliminary Notices **16**

Reminder – Comment Period for Active Preliminary Notices		16
*809(T)/22	Port de Montréal – Waterway Information: Calculation of Under-Keel Clearance	17
*810(T)/22	Île du Petit Mécatina aux/to Îles Sainte-Marie – Waterway Information: Shoal	17
*811(T)/22	Cap-aux-Meules – Waterway Information: Restrictions	17
*812(P)/22	Halifax Harbour: Black Point to / à Point Pleasant – Aid to Navigation to be Discontinued .	18
*813(T)/22	Lac Saint-Louis – Obstruction: Rock.....	18
*814(P)/22	Lake Nipissing / Lac Nipissing (Eastern Portion / Partie est) – Unlit Buoy to be Discontinued.....	19
*815(P)/22	Iron Island to/à West Bay – Range Lights to be Discontinued	19
*816(P)/22	Canadian Hydrographic Service – Raster Navigational Charts to be Discontinued	20

Section 2: Chart Corrections **23**

Section 3: Radio Aids to Marine Navigation Corrections **49**

No corrections for this section.		49
---------------------------------------	--	----

Section 4: Canadian Sailing Directions Corrections	50
---	-----------

Section 5: List of Lights, Buoys and Fog Signals Corrections	51
---	-----------

Numerical Index of Canadian Charts Affected

This numerical index lists all nautical charts mentioned in this monthly edition of Notices to Mariners. Only charts appearing in Section 2 of this publication require a chart correction. The appearance of charts in all other sections, particularly those related to the correction of other nautical publications, is included here for reference.

Chart No.	Pages	Chart No.	Pages	Chart No.	Pages
1310	17	4202	16, 35	4821	16
1312	23, 57	4203	18	4842	16
1313	23	4210	35	4847	16
1320	23, 56	4230	35	4850	54
1430	18	4236	54	4858	16
1510	23, 57	4237	35	4861	42, 43, 54
2077	14	4241	16	4863	43
2201	24	4242	35	4864	43, 54
2202	15, 24	4244	16	4885	43, 51
2203	24, 25	4320	35, 36	4911	55
2204	25, 26	4384	16	4912	55
2205	26	4386	16, 36, 54	4913	43, 56
2242	26, 27	4403	36	4920	15, 55, 56
2243	27, 28	4432	12	4921	43, 44
2244	28, 29	4456	36, 37	4935	45, 54
2245	29, 57	4460	16	4956	17
2273	29	4466	16, 37, 54, 55	5030	45, 52
2283	29	4468	17	5031	52
2293	30	4486	37	5032	45, 52
2301	57	4625	37, 38, 39	5033	45, 52
4001	30	4626	39, 40	5042	45, 53
4003	30	4641	51	5133	46, 53
4012	30	4644	51	5134	46, 53
4013	30	4652	40, 51	5135	46
4015	31	4665	40, 51	5138	46, 53
4016	31	4669	40, 51, 52	5163	46, 47, 53
4020	31	4701	40, 41, 52	5179	47, 52
4021	32	4702	41	6035	19
4025	32	4703	41	6037	19
4026	33, 34	4730	41	8007	47
4047	34	4731	41, 42	8048	48
4117	16	4732	42	8049	48
4141	16	4744	42		
4142	16	4745	42, 53		
4201	34	4820	42		

Section 1: General and Safety Information

***401/20 Transport Canada – COVID-19 Measures, Updates and Guidance**

(Recurrent publication of notice *401/20, originally published in the *Notices to Mariners – Monthly Eastern Edition 04/2020* publication.)

Please refer to the link below for the latest updates to transportation related measures taken by Transport Canada in response to the evolving novel Coronavirus disease (COVID-19):
<https://www.tc.gc.ca/en/initiatives/covid-19-measures-updates-guidance-tc.html>.

For travel advice and all other updates, please visit: Canada.ca/coronavirus.

***206/22 Transport Canada – Annual Edition of Notices to Mariners 2022 - Section A3, Notice 7A: Voyage Planning for Vessels Intending to Navigate in Canada's Northern Waters**

(Recurrent publication of notice *206/22, originally published in the *Notices to Mariners – Monthly Eastern Edition 02/2022* publication.)

Transport Canada has revised notice 7A, Voyage Planning for Vessels Intending to Navigate in Canada's Northern Waters, of the *Annual Edition of Notices to Mariners* to reflect Arctic Shipping Safety and Pollution Prevention Regulations ([ASSPPR](#)) and to provide further guidance on voyage planning.

***401/22 Protecting the North Atlantic Right Whale: Speed Restriction Measures in the Gulf of St. Lawrence**

(Recurrent publication of notice *401/22, originally published in the *Notices to Mariners – Special Edition 02/2022* publication.)

PURPOSE

This notice describes the speed restriction zones that vessels must follow in the Gulf of St. Lawrence.

The Government of Canada has established these zones to reduce the risk of vessel colliding with North Atlantic right whales (NARW).

BACKGROUND

Due to changing migration patterns of North Atlantic right whales and their increased presence in the Gulf of St. Lawrence, the Government of Canada has set seasonal speed restrictions in specific zones. These speed restrictions zones are defined as “static zones,” “dynamic shipping zones,” “seasonal management areas,” a trial “voluntary slowdown zone” and a “restricted area.” [See the map below for details.](#)

Note: Vessels **must follow** Navigational Warnings outlining the speed restrictions. The *Interim Order for the Protection of North Atlantic Right Whales (Eubalaena Glacialis) in the Gulf of St. Lawrence, 2022* enables the issuance of Navigational Warnings (NAVWARNs) imposing speed restrictions and navigation restrictions.

Speed restriction zones are described in monthly Notices to Mariners (NOTMARs), which are published by the Canadian Coast Guard. The status of these zones is broadcast through NAVWARNs, which are published by the Coast Guard's Marine Communications and Traffic Services Centres.

CHANGES TO SPEED RESTRICTION ZONES AND MEASURES

Based on consultations with industry and on scientific data, changes to the speed restriction zones will be effective from April 20, 2022, while the restricted area will be implemented based on whale presence:

- For a third and final year, a trial voluntary slowdown of 10.0 knots over the ground spanning from Cabot Strait (a line running from Cape North NS to Cape Ray NL) to the eastern edge of dynamic shipping zone E will be implemented at the beginning and end of the North Atlantic right whale season.

- Again this year, a restricted area located in and near Shediac Valley. The location and size are both based on historical data of North Atlantic right whale aggregations, while the triggering mechanism is based on in-season detections.
- The 36.57 m (20-fathom) shallow water protocol will apply once again to all commercial fishing vessels.

Please check the latest NAVWARN for all speed restrictions currently in effect.

SPEED RESTRICTION MEASURES FOR 2022

These restrictions will be in effect from **April 20 to November 15, 2022**.

Exceptions

The following exception will apply to **all** measures:

- a) a vessel in distress or providing assistance to a person or a vessel in distress;
- b) a government vessel being used
 - (i) for law enforcement activities;
 - (ii) for search and rescue operations; or
 - (iii) to ensure the competency of the crew or the operational readiness of the vessel or crew with respect to such activities or operations.

STATIC ZONES

In the static zones, **all** vessels above **13 m** in length overall (LOA) must proceed at a speed of not more than 10.0 knots over the ground.

Exceptions

Air cushion vessels operated by or on behalf of the Government of Canada that are engaged in ice-clearing activities from April to June in and around Chaleur Bay are exempted when in operation.

36.57 m (20-fathom) shallow water protocol

Vessels engaged in any commercial fishing activity may proceed at a safe operational speed in waters not more than 36.57 m (20 fathom) deep.

If a notice to fish harvesters states that at least one right whale has been detected within static zone in waters that are not more than 36.57 m deep, the 10 knots speed limit will apply to all vessels above 13 m in length overall (LOA) 15 days after the day on which the whale was detected.

If a new notice to fish harvesters is published or broadcast during the last seven days of the 15-day period, the speed limit will continue to apply for a further 15 days after the day on which the new detection took place.

Coordinates for the northern static zone:

- 50° 20' N, 065° 00' W
- 49° 13' N, 065° 00' W
- 48° 40' N, 064° 13' W
- 48° 40' N, 062° 40' W
- 48° 03' N, 061° 07.5' W
- 47° 58.1' N, 061° 03.5' W
- 48° 00' N, 061° 00' W
- 49° 04' N, 061° 00' W
- 49° 04' N, 062° 00' W
- 49° 43' N, 063° 00' W
- 50° 20' N, 063° 00' W

Coordinates for the southern static zone:

- 48° 40' N, 065° 00' W
- 48° 40' N, 062° 40' W
- 48° 03' N, 061° 07.5' W
- 47° 58.1' N, 061° 03.5' W
- 47° 10' N, 062° 30' W
- 47° 10' N, 065° 00' W

DYNAMIC SHIPPING ZONES

There are five dynamic shipping zones (DSZ) located in the routing systems north and south of Anticosti Island: A, B, C, D and E.

Coordinates for the dynamic shipping zones:

Zone A

- 49° 41' N, 065° 00' W
- 49° 20' N, 065° 00' W
- 49° 11' N, 064° 00' W
- 49° 22' N, 064° 00' W

Zone B

- 49° 22' N, 064° 00' W
- 49° 11' N, 064° 00' W
- 48° 48' N, 063° 00' W
- 49° 00' N, 063° 00' W

Zone C

- 49° 00' N, 063° 00' W
- 48° 48' N, 063° 00' W
- 48° 24' N, 062° 00' W
- 48° 35' N, 062° 00' W

Zone D

- 50° 16' N, 064° 00' W
- 50° 00' N, 064° 00' W
- 49° 56' N, 063° 00' W
- 50° 16' N, 063° 00' W

Zone E

- 48° 35' N, 062° 00' W
- 48° 24' N, 062° 00' W
- 48° 03' N, 061° 07.5' W
- 47° 58.1' N, 061° 03.5' W
- 48° 00' N, 061° 00' W
- 48° 10.5' N, 061° 00' W

When a North Atlantic right whale is detected in a dynamic shipping zone:

- All vessels will be notified via a NAVWARN; and
- Vessels above **13 m** in length overall (LOA) must proceed at a speed of not more than 10.0 knots over the ground within that zone.

Even though dynamic shipping zones overlap with static zones, vessels can travel at a safe operational speed in dynamic shipping zones when they are not under speed restriction. They must also keep in mind that North Atlantic right whales may be nearby.

Speed restrictions in the dynamic shipping zones

The detection of North Atlantic right whales in one or more dynamic shipping zone(s), will trigger a speed restriction in the concerned zone(s). The speed restriction in the dynamic shipping zone(s) will be in effect for 15 days from the date of detection. In the event of a new North Atlantic right whale detection occurring in the last 7 days of the 15-day slowdown period, the speed restriction may be extended for an additional 15 days from the date of the new detection. This would continue until no NARW are detected.

When a NAVWARN is issued implementing a speed restriction in one or more dynamic shipping zone(s), vessels above **13 m** in length (LOA) must not exceed a speed of 10.0 knots over the ground. Within any dynamic zone that is not subject to a speed restriction, mariners may proceed at a safe operational speed. Mariners are encouraged to take into consideration the potential for their vessel striking North Atlantic right whales when considering a “safe operational speed” during navigation.

SEASONAL MANAGEMENT AREAS

Seasonal management area 1 (SMA-1) and seasonal management area 2 (SMA-2) are speed restriction areas located north and south of dynamic shipping zone E, respectively.

Within seasonal management areas, vessels above **13 m** in length (LOA):

- must restrict their speed so as not to exceed 10.0 knots over the ground from April 20 to June 28, 2022; **and**
- are allowed to proceed at a safe operational speed from June 29 to November 15, 2022, unless a North Atlantic right whale is detected. If a whale is detected, a speed restriction of 10.0 knots over the ground will be triggered for 15 days from the date of detection. In the event of a new North Atlantic right whale detection occurring in the last 7 days of the 15-day slowdown period, the speed restriction may be extended for an additional 15 days from the date of the new detection. This would continue until no North Atlantic right whales are detected.

Coordinates for the SMA-1:

- 49° 04' N, 062° 00' W
- 49° 04' N, 061° 00' W
- 48° 10.5' N, 061° 00' W
- 48° 35' N, 062° 00' W

Coordinates for the SMA-2:

- 48° 24' N, 062° 00' W
- 48° 03' N, 061° 07.5' W
- 47° 58.1' N, 061° 03.5' W
- 47° 26.69' N, 062° 00' W

RESTRICTED AREA

In the summer months, an important proportion of the total North Atlantic right whale population gathers for feeding and surface activity near the [Shediac Valley](#). Since this makes the North Atlantic right whale more susceptible to vessel collisions, a mandatory restricted area will be implemented in and near the [Shediac Valley](#) and will come into force once 80% of the restricted area is closed to fishing for the season as per [the Department of Fisheries and Oceans's right whale closure protocol](#). The restricted area will be lifted once the North Atlantic right whale detections decrease in the restricted area.

The size and location of the area are determined based on historical detection data of North Atlantic right whales. All necessary details can be found in the *Interim Order for the Protection of North Atlantic Right Whales (Eubalaena Glacialis) in the Gulf of St. Lawrence, 2022*. Triggering and lifting of the restricted area will be communicated to mariners through a NAVWARN and notice to fish harvesters.

Vessels above **13 m** in length (LOA) will be required to:

- avoid the area unless they are part of the exceptions listed in the *Interim Order for the Protection of North Atlantic Right Whales (Eubalaena Glacialis) in the Gulf of St. Lawrence, 2022*;
- transit the area at a speed not exceeding 8.0 knots over the ground if they are part of the exceptions.

The following exceptions will apply to the restricted area. Vessels listed can travel through the area at not more than 8.0 knots over the ground:

- A vessel being used for commercial fishing;
- A vessel being used for fishing under the authority of a licence issued under the *Aboriginal Communal Fishing Licences Regulations*;
- A vessel being used for research purposes on behalf of the Government of Canada;
- A vessel being used as part of the Department of Fisheries and Oceans' Marine Mammal Response Program to assist a marine mammal or sea turtle in distress or to access or retrieve a deceased marine mammal or sea turtle;
- A vessel authorized by the Government of Canada to retrieve or identify the location of abandoned or lost fishing gear;
- A vessel involved in pollution response operations;
- A vessel avoiding immediate or unforeseen danger;
- A vessel involved in research relating to right whales as part of a project that has received funding from the Government of Canada.

The following vessels can travel through the restricted area at a speed over 8.0 knots, but below 10.0 knots over the ground as required by the static speed restriction zone:

- A vessel being used by an employee of the Government of Canada or peace officer who is performing their duties.

The location and size of the restricted area will not be modified during the season.

Coordinates for the restricted area:

- 48°31.8' N, 063°39.6' W
- 48°24.72' N, 063°17.88' W
- 47°18.84' N, 064°10.8' W
- 47°27.18' N, 064°30.72' W

Inclement weather exception

Mariners will be notified in advance via a NAVWARN should the speed restriction status change in any zone or area, due to inclement weather.

Within any zone or area that is no longer subject to a speed restriction due to adverse weather conditions, mariners may proceed at a safe operational speed. Mariners are however encouraged to take into consideration the potential for their vessel striking North Atlantic right whales when considering a “safe operational speed” during navigation.

*Non-expected vessels are still prohibited from transiting through the restricted area.

TRIAL VOLUNTARY SLOWDOWN IN CABOT STRAIT

To coincide with the North Atlantic right whales entering and exiting the Gulf of St. Lawrence in large numbers, a trial voluntary slowdown is being put in place for the third year in Cabot Strait from April 20 to June 28, 2022, and from September 28 to November 15, 2022.

- During these periods, vessels above 13 m in length (LOA) are requested to voluntarily reduce their speed as to not exceed 10.0 knots over the ground.

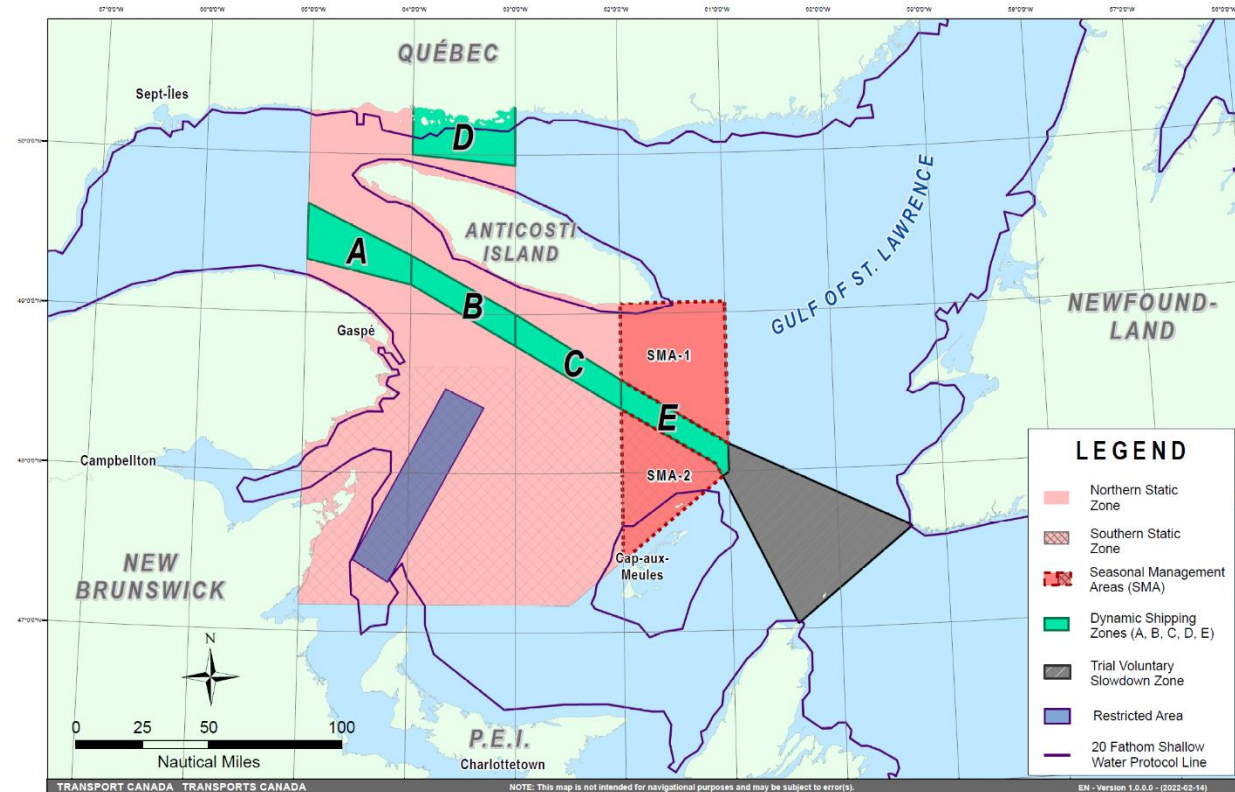
Voluntary slowdown zone coordinates:

- 48° 10.5' N, 061° 00' W
- 47° 37.2' N, 059° 18.5' W
- 47° 02' N, 060° 23.7' W
- 47° 58.1' N, 061° 03.5' W
- 48° 00' N, 061° 00' W

MAP OF THE GULF OF ST. LAWRENCE

The following map shows

- the static zones (north and south), in pink;
- the dynamic shipping zones (A, B, C, D and E), in green;
- the seasonal management areas, in dark pink;
- the trial voluntary slowdown zone, in grey;
- the restricted area, in dark blue; and
- the 36.57 m (20 fathom) shallow water protocol line.



This map is for visual representation only and is not to be used for navigation or enforcement.

NAVWARN BROADCASTS

The Canadian Coast Guard issues NAVWARNs:

- by radio broadcast; and
- online at [Canada's Maritime Information Portal](#) and its [Navigational Warnings](#) site.

Mariners must ensure they have accurate and up-to-date information about the protection of the North Atlantic right whale, as in all applicable NOTMARs and NAVWARNs.

For the North Atlantic right whale speed restrictions, the NAVWARN(s) currently in effect will be provided to vessels subject to the *Vessel Traffic Services Zone Regulations* or the *Eastern Canada Vessel Traffic Services Zone Regulations*:

Outbound vessels will receive NAVWARNs

- at Calling-in-Point 10 (St-Laurent); or
- upon a departure downstream from the Quebec pilot station (including the Saguenay River, Chaleur Bay, Miramichi Bay, etc.)

Inbound vessels will receive NAVWARNs

- when a clearance to enter Canadian waters is granted

Vessels in transit will receive NAVWARNs

- at the last reporting point prior to entering the mandatory speed restriction zones; and/or
- at 10 nautical miles before they enter the mandatory speed restriction zones

For those vessels not subject to the above-mentioned regulations, vessel operators are required to monitor broadcasts by the Canadian Coast Guard's Marine Communications and Traffic Services network for the most up-to-date information. For marine radio frequencies and broadcast times, information may be found in the [Radio Aids to Marine Navigation](#) publication.

AIDS TO NAVIGATION

The Canadian Coast Guard is currently testing virtual Automatic Identification System (AIS) aids to navigation (AIS AtoN) in specific areas. These aids notify mariners of a dynamic shipping zone and/or a seasonal management area subject to a speed restriction.

Each zone is delimited by four to six virtual AIS AtoN, which can be displayed on a ship's navigation equipment, such as

- Electronic Chart Display and Information System (ECDIS);
- Electronic Chart System (ECS);
- RADAR;
- Minimum Keyboard Display (MKD); and
- Electronic Nautical Chart (ENC).

The Canadian Coast Guard broadcasts the virtual AIS AtoN only when a speed restriction is in effect in one or more testing zones.

Mariners must select the virtual AIS AtoN symbol to view a message such as "SectA1 Spd Lim 10 kt." This message refers to a speed restriction in effect for a specific zone.

Note: This system is not the primary method of communicating this information.

COMPLIANCE AND ENFORCEMENT

Vessels must comply with the Interim Orders made pursuant to the *Canada Shipping Act, 2001*, and any NAVWARNs broadcast and published by the Canadian Coast Guard relating to the Interim Orders, aimed at regulating the navigation for the purposes of protecting the North Atlantic right whales.

If a vessel does not comply with the Interim Orders or instructions in the NAVWARNs related to the Interim Orders, the vessel could face:

- administrative monetary penalties up to a maximum of CAN \$250,000; and/or
- penal sanctions under the *Canada Shipping Act, 2001*.

If a vessel appears to have violated the speed restriction, Transport Canada Marine Safety inspectors will review all information provided through AIS and seek an explanation from the master.

No exemptions to the speed restriction will be granted in advance. However, if a deviation from the speed restrictions is necessary for safety reasons, the following information must be entered into the bridge logbook:

- reason(s) for deviation;
- speed at which vessel is operated;
- latitude and longitude at time of deviation;
- time and duration of deviation; and
- master of the vessel shall sign and date the bridge logbook entry.

For any deviation, Transport Canada will review and consider reasons such as:

- navigating to ensure vessel safety;
- weather conditions;
- force majeure (unforeseeable circumstances); and
- responding to emergencies.

REPORT A NORTH ATLANTIC RIGHT WHALE SIGHTING

If you see live, free-swimming whales:

- Call 1-902-440-8611 (local) or 1-844-800-8568 (toll free)
- Email: XMARWhalesightings@dfo-mpo.gc.ca

If you see a North Atlantic right whale that is entangled, injured or dead, please report it to your nearest Canadian Coast Guard Marine Communications and Traffic Services Centre, or call:

Southern part of the Gulf of St. Lawrence

Marine Animal Response Society
Telephone: 1-866-567-6277

Newfoundland and Labrador

Whale Release and Strandings
Telephone: 1-888-895-3003

For the Québec Sector

Marine Mammal Emergencies
Telephone: 1-877-722-5346

Please consult WhaleMap for the latest right whale observations: <https://whalemap.org/>

***406/22 Saguenay–St. Lawrence Marine Park and Surrounding Waters – Whale Protection**

(Recurrent publication of notice *406/22, originally published in the *Notices to Mariners – Monthly Eastern Edition 04/2022* publication.)

The waters in and around the Saguenay–St. Lawrence Marine Park are well known for the resident endangered beluga population and the wide diversity of whales that migrate there to feed, particularly between April and November.

REGULATORY PROTECTION MEASURES

All whale species that are found in the St. Lawrence are protected under the *Marine Mammal Regulations*, pursuant to the *Fisheries Act*. Within the boundaries of the Marine Park, specific measures are set out in the *Marine Activities in the Saguenay–St. Lawrence Marine Park Regulations*, pursuant to the establishment of the *Saguenay–St. Lawrence Marine Park Act*. Any collision with a marine mammal within the Marine Park must immediately be reported to a park warden at 1-866-508-9888. For collisions that occur outside the Marine Park or for any situation involving a marine mammal that is dead or in trouble, contact the emergency network at 1-877-722-5346 or on VHF channel 16.

For more information on the Saguenay–St. Lawrence Marine Park, see notice 5C of the *Notices to Mariners Annual Edition 2022*.

VOLUNTARY PROTECTION MEASURES

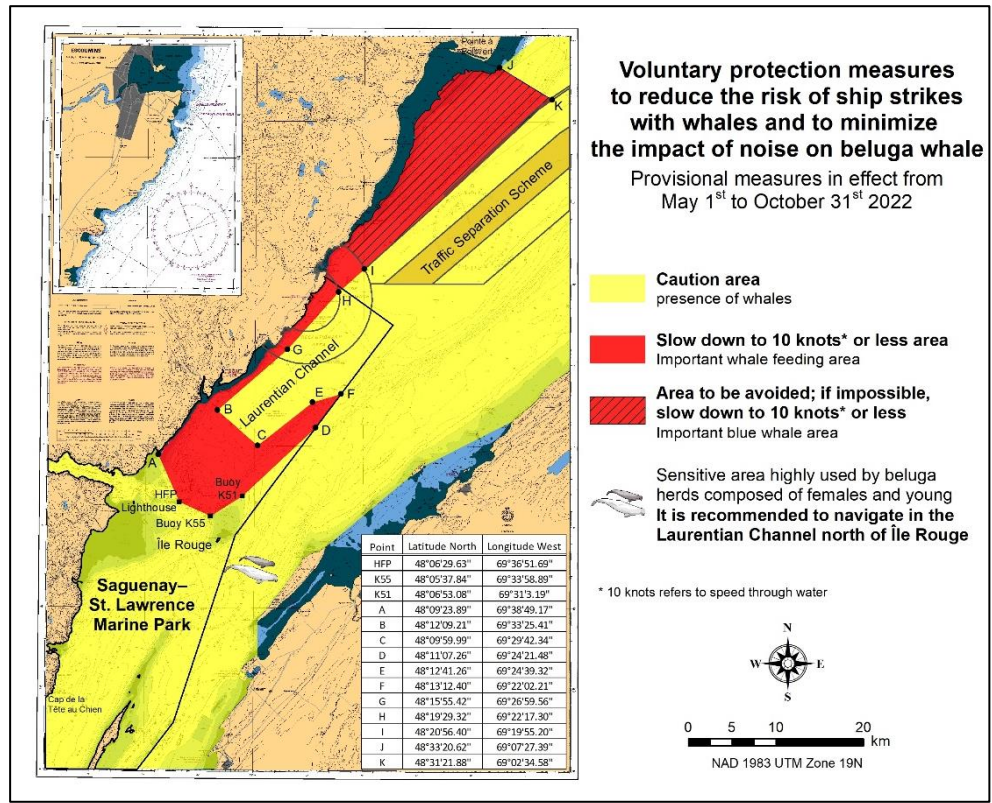
Provisional measures in effect from May 1 to October 31, 2022. See map at the end of this notice.

These measures apply to merchant vessels and cruise ships between Pointe à Boisvert and Cap de la Tête au Chien to prevent collisions with whales. These measures should only be taken when they will not jeopardize navigational safety.

Caution area (yellow area): To reduce the risk of collisions with whales that can be present anywhere in this area, heightened vigilance of navigators is critical. Posting a lookout is recommended in order to increase the chances of seeing the whales and thus taking necessary measures to avoid them. If bypassing the whales is not possible, slow down and wait for the animals to move away to a distance greater than 400 metres (0.215 nautical miles) before resuming original speed. It is more difficult to see the animals at night therefore increased caution is recommended.

Slow down to 10 knots or less area (red area): To reduce the risk of collisions with whales in this feeding area, it is recommended that vessels slow down to a maximum speed through the water of 10 knots and post a lookout. It is further recommended to remain in the Laurentian Channel to the north of Île Rouge to minimize the impact of noise in a sensitive area south of this island, which is highly frequented by herds of beluga whales composed of females and young.

Area to be avoided (hatched red area): To reduce noise and the risk of collisions with whales, vessels should avoid transiting through this area which is highly frequented by blue whales, an endangered species. If the area cannot be avoided, slow down to a speed through the water of 10 knots or less.



***407/22 Saguenay–St. Lawrence Marine Park - Beluga Whale Protection: Slowdown Area at the Mouth of the Saguenay Fjord and Area Closure at Baie Sainte-Marguerite**

(Recurrent publication of notice *407/22, originally published in the *Notices to Mariners – Monthly Eastern Edition 04/2022* publication.)

The Saguenay–St. Lawrence Marine Park and its surrounding area are at the heart of endangered beluga whale critical summer habitat. Marine mammal protection measures have been put in place in accordance with the *Marine Activities in the Saguenay–St. Lawrence Marine Park Regulations* within the limits of the Marine Park.

However, important feeding, calving and rearing areas for beluga whales require greater protection to ensure the recovery of the species. The portion of the Saguenay situated between the mouth of the Fjord and Baie Sainte-Marguerite is one of the areas most used by females and their young from May to October. The mouth of the Saguenay is known as a feeding ground and Baie Sainte-Marguerite as a calving and rearing area.

In order to prevent collisions with beluga whales, a compulsory 15-knot slowdown area is in effect from May 1st to October 31st at the mouth of the Saguenay. To ensure tranquility for female belugas and their young during the critical calving period, access to Baie Sainte-Marguerite is prohibited to all vessels from June 21st to September 21st, except for special authorizations (see description below).

For safety reasons, *the slowdown area measure at the mouth of the Saguenay Fjord does not apply* to cargo ships (see the monthly edition of *Notice to Mariners* from May to October for voluntary protection measures in the St. Lawrence Estuary). An enhanced vigilance is, however, recommended to all navigators between the mouth of the Saguenay Fjord and Baie Sainte-Marguerite for the protection of beluga whales.

For more information on the Saguenay–St. Lawrence Marine Park, see notice 5C of the *Notices to Mariners Annual Edition 2022* or visit marinepark.qc.ca.

REGULATORY PROTECTION MEASURES — BELUGA WHALE

Entire Marine Park Territory:

- When beluga whales are less than half a nautical mile (926 metres) from a motorized vessel, the vessel must maintain a steady speed of between 5 and 10 knots.
- All vessels, including human-powered vessels (kayaks and canoes), must continue to move forward and maintain their heading.
- All vessels must maintain a minimum distance of 400 metres from beluga whales at all times.

For more information concerning the regulations, consult: marinepark.ca/protect/.

Mouth of the Saguenay Fjord (Figure 1) — Slowdown Area (area crosshatched in red):

- Maximum speed at the mouth of the Saguenay between buoys S7 and S8 and the ferry docks between Baie-Sainte-Catherine and Tadoussac is 15 knots from May 1st to October 31st.

Baie Sainte-Marguerite (Figure 2) — Area Closure (red area):

- From June 21st to September 21st, vessels must not enter the red area, which follows a line between Cap Nord-Ouest and Cap Sainte-Marguerite.
- Special authorizations are granted only for kayaks, canoes and recreational fishermen who must travel without stopping along a corridor within 10 metres of the shore or in shallow areas.

VOLUNTARY PROTECTION MEASURES

Baie Sainte-Marguerite sector (Figure 2) — Transit Area (area crosshatched in yellow):

- From June 21st to September 21st, navigation in this area is recommended at a speed of between 5 and 10 knots without stopping.

The purpose of this transit area is to favour respect of the *Marine Activities in the Saguenay–St. Lawrence Marine Park Regulations*, since beluga whales are often present in the Baie Sainte-Marguerite sector.

INFORMATION

All incidents, including collisions with whales, must be reported without delay by calling 1-866-508-9888. For any other situation concerning a marine mammal that is either dead or in trouble, contact the Marine Mammal Emergency Response Network at 1-877-722-5346, or use VHF channel 16.

Figure 1

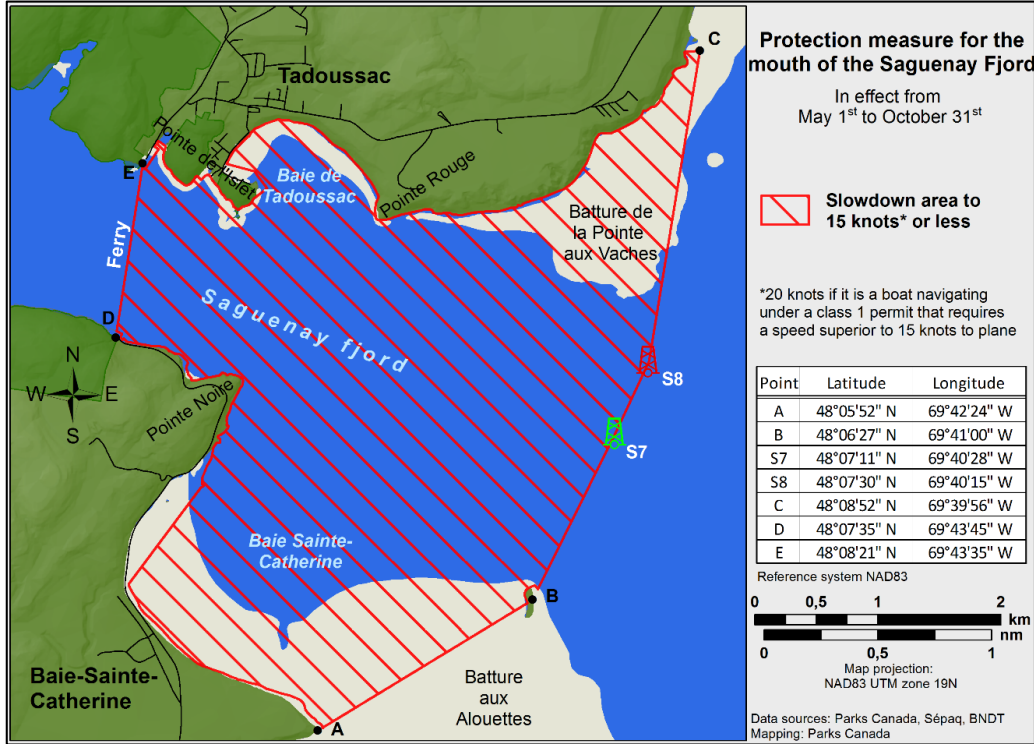
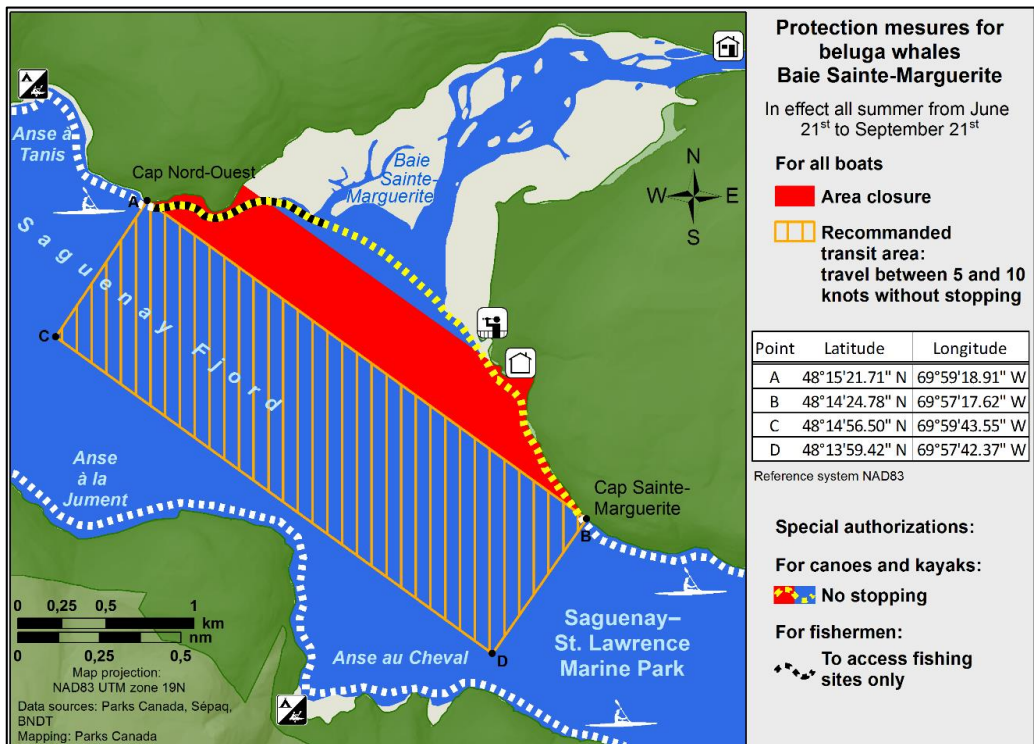


Figure 2



***801/22 Canadian Hydrographic Service – Nautical Charts**

Charts	Main Title	Scale	Published	Cat#	Price
New Editions					
4432	Archipel de Mingan	1:70 000	2022-08-26	1	\$20.00

***802/22 Canadian Hydrographic Service – Electronic Navigational Charts**

S-57 ENC Number	Chart Title	ENC Compilation Scale	Published
New Charts			
CA55WSPA (Edn 1.000)	Port5150N05590W	1:11 000	2022-08-26
CA55XSPA (Edn 1.000)	Port5160N05590W	1:11 000	2022-08-26
New Editions			
CA373053 (Edn 7.000)	Bateau Island to Byng Inlet	1:30 000	2022-08-05
CA376355 (Edn 8.000)	Approaches to Cartwright, Black Island to Tumbledown Dick Island	1:37 500	2022-08-05
CA376660 (Edn 2.000)	Cape St. John to/à St. Anthony	1:75 000	2022-08-19
CA376669 (Edn 3.000)	Khikkertarsoak North Island To Morhardt Point , Continuation A	1:50 000	2022-08-05
CA376811 (Edn 4.000)	South Auliatsivik Island to/à Fenstone Tickle Island	1:30 000	2022-08-05
CA470167 (Edn 5.000)	Alberni Inlet	1:20 000	2022-08-26
CA479017 (Edn 13.000)	Donnacona à/to Batiscan	1:22 000	2022-08-26
CA570154 (Edn 7.000)	Ladysmith Harbour	1:6 000	2022-08-05
CA570156 (Edn 7.000)	Dodd Narrows to/à Flat Top Islands	1:9 000	2022-08-12
CA570168 (Edn 8.000)	Port Alberni	1:6 000	2022-08-26
CA570169 (Edn 4.000)	Robbers Passage	1:5 000	2022-08-26
CA570170 (Edn 5.000)	Entrance to/Entrée à Useless Inlet	1:5 000	2022-08-26
CA571077 (Edn 2.000)	CA571077	1:22 000	2022-08-19
CA576182 (Edn 3.000)	Summerside Harbour	1:6 000	2022-08-19
CA576386 (Edn 9.000)	St. John's Harbour	1:2 500	2022-08-05
CA579019 (Edn 11.000)	Portneuf	1:4 000	2022-08-26
CA579071 (Edn 9.000)	Chandler	1:12 000	2022-08-26
CA579142 (Edn 3.000)	Deschailons-sur-Saint-Laurent	1:4 000	2022-08-26

***803/22 Transport Canada – Ship Safety Bulletin #18/2022**

A new **Ship Safety Bulletin** has recently been posted on the [Transport Canada website](#).

To view or download this bulletin, please click on the link below:

**[SSB#18/2022](#) – Inspecting passenger vessels in Canadian Arctic Waters and Voyage planning
RDIMS# 18811880**

Sign up for [e-Bulletin](#) to receive an e-mail notice each time a new Ship Safety Bulletin is published on our website.

Contact us at marinesafety-securitemaritime@tc.gc.ca or 1-855-859-3123 (Toll Free).

***804/22 Canadian Coast Guard Publication – Amendments to the *List of Lights, Buoys and Fog Signals* Publication: Newfoundland and Labrador Coast**

Please note that the following sections in the Newfoundland and Labrador Coast volume of the *List of Lights, Buoys and Fog Signals* publication are now grouped into a single section. Please see the table below for the complete list of changes.

Previous Sections	New Section
Notre Dame Bay LL 326 – 346.36	Notre Dame Bay LL 326 – 395
Bay of Exploits LL 347 – 353.9	
Notre Dame Bay LL 354 – 395	

***805/22 Canadian Coast Guard Publication – *List of Lights, Buoys and Fog Signals* Publication: Newfoundland and Labrador Coast – All Documents Now Available to Download as a Single PDF Document**

The Newfoundland and Labrador Coast volume of the *List of Lights, Buoys and Fog Signals* publication is now available to download as a single PDF document.

This feature was recently added to the Notices to Mariners website and allows the download of a single PDF document regrouping the Front Cover and General Information Pages, all individual sections of the volume, and the Geographical and Designator Indexes.

Currently, this option is available for the Pacific Coast and Newfoundland and Labrador Coast volumes. Other volumes will be available at a later date.

***806/22 Lake Ontario/Lac Ontario (Western Portion/Partie Ouest) –Unlit Buoys
Permanently Established**

Reference Chart: 2077

The following unlit buoys have been permanently established:

Aid Name	LL #	Position
Grimsby Small Arms Range buoy B1	7538.41	43° 13' 29.6"N 079° 37' 04.8"W
Grimsby Small Arms Range buoy B2	7538.42	43° 13' 36.5"N 079° 37' 01.2"W
Grimsby Small Arms Range buoy B3	7538.43	43° 13' 43.0"N 079° 36' 57.2"W
Grimsby Small Arms Range buoy B4	7538.44	43° 13' 49.4"N 079° 36' 53.6"W
Grimsby Small Arms Range buoy B5	7538.45	43° 13' 55.9"N 079° 36' 49.7"W
Grimsby Small Arms Range buoy B6	7538.46	43° 14' 02.4"N 079° 36' 46.1"W
Grimsby Small Arms Range buoy B7	7538.47	43° 14' 09.2"N 079° 36' 42.1"W
Grimsby Small Arms Range buoy B8	7538.48	43° 14' 15.7"N 079° 36' 38.5"W
Grimsby Small Arms Range buoy B9	7538.49	43° 14' 22.2"N 079° 36' 34.6"W
Grimsby Small Arms Range buoy B10	7538.5	43° 14' 28.7"N 079° 36' 31.0"W
Grimsby Small Arms Range buoy B11	7538.51	43° 14' 35.2"N 079° 36' 27.0"W
Grimsby Small Arms Range buoy B13	7538.53	43° 14' 48.5"N 079° 36' 19.4"W
Grimsby Small Arms Range buoy B14	7538.54	43° 14' 55.0"N 079° 36' 15.5"W
Grimsby Small Arms Range buoy B15	7538.55	43° 15' 01.4"N 079° 36' 11.9"W
Grimsby Small Arms Range buoy B17	7538.57	43° 15' 05.8"N 079° 36' 01.1"W
Grimsby Small Arms Range buoy B18	7538.58	43° 15' 03.6"N 079° 35' 53.9"W
Grimsby Small Arms Range buoy B19	7538.59	43° 15' 01.1"N 079° 35' 46.3"W
Grimsby Small Arms Range buoy B20	7538.6	43° 14' 58.6"N 079° 35' 38.8"W
Grimsby Small Arms Range buoy B21	7538.61	43° 14' 56.0"N 079° 35' 31.2"W
Grimsby Small Arms Range buoy B22	7538.62	43° 14' 53.5"N 079° 35' 23.6"W
Grimsby Small Arms Range buoy B24	7538.64	43° 14' 45.2"N 079° 35' 20.4"W
Grimsby Small Arms Range buoy B25	7538.65	43° 14' 39.1"N 079° 35' 24.7"W
Grimsby Small Arms Range buoy B26	7538.66	43° 14' 33.4"N 079° 35' 29.4"W
Grimsby Small Arms Range buoy B27	7538.67	43° 14' 27.2"N 079° 35' 33.7"W
Grimsby Small Arms Range buoy B28	7538.68	43° 14' 21.5"N 079° 35' 38.0"W
Grimsby Small Arms Range buoy B29	7538.69	43° 14' 15.4"N 079° 35' 42.4"W
Grimsby Small Arms Range buoy B30	7538.7	43° 14' 09.2"N 079° 35' 46.7"W
Grimsby Small Arms Range buoy B31	7538.71	43° 14' 03.5"N 079° 35' 51.0"W
Grimsby Small Arms Range buoy B33	7538.73	43° 13' 51.2"N 079° 35' 59.6"W
Grimsby Small Arms Range buoy B34	7538.74	43° 13' 45.5"N 079° 36' 04.0"W
Grimsby Small Arms Range buoy B35	7538.75	43° 13' 39.4"N 079° 36' 08.6"W
Grimsby Small Arms Range buoy B36	7538.76	43° 13' 33.2"N 079° 36' 13.0"W
Grimsby Small Arms Range buoy B37	7538.77	43° 13' 27.5"N 079° 36' 17.3"W
Grimsby Small Arms Range buoy B38	7538.78	43° 13' 21.4"N 079° 36' 21.6"W
Grimsby Small Arms Range buoy B39	7538.79	43° 13' 15.6"N 079° 36' 25.9"W

(B2022-003 to 005, 009 to 016, 018 to 033, 035 to 041, 048)

***807/22 Port Severn to/à Parry Sound – Unlit Buoy Permanently Established**

Reference Chart: 2202

The following unlit buoy has been permanently established:

Aid Name	LL #	Position
Buoy CM3	8239.3	45° 10' 37.2"N 080° 06' 43.2"W

(D2022-026)

***808/22 Plans Baie des Chaleurs / Chaleur Bay - Côte sud / South Shore – Unlit Buoy Repositioned**

Reference Chart: 4920

The following unlit buoy has been repositioned:

Aid Name	LL #	Position
Shippagan buoy EG29	6291.2	47° 44' 50.3"N 064° 41' 52.2"W

(G2022-060)

Section 1A: Temporary and Preliminary Notices

Reminder – Comment Period for Active Preliminary Notices

This is a reminder that the comment period is still open for the following active Preliminary notices:

Notice #	Reference Chart #	Aids Affected (LL #)	Intent of Notice
Newfoundland and Labrador Coast			
605(P)/22	4842	7.5	Bell to be Discontinued
706(P)/22	4821	326	Notice of Proposed Changes
707(P)/22	4847	494	Notice of Proposed Changes
708(P)/22	4858	430	Notice of Proposed Changes
Atlantic Coast			
606(P)/22	4117	98	Aid to Navigation Name to be Changed
607(P)/22	4141	5116.1	Aid to Navigation Name to be Changed
608(P)/22	4142	5141.601, 5141.603, 5141.604, 5141.605	Aid to Navigation Names to be Changed
609(P)/22	4202	534	Aid to Navigation Name to be Changed
610(P)/22	4241	LIST	Aid to Navigation Names to be Changed
611(P)/22	4244	LIST	Aid to Navigation Names to be Changed
612(P)/22	4384	420	Aid to Navigation Name to be Changed
613(P)/22	4386	LIST	Aid to Navigation Names to be Changed
710(P)/22	4460	993	Notice of Proposed Changes
711(P)/22	4466	983.5, 6001	Aids to navigation to be Discontinued

Please refer to the [Notices to Mariners - Monthly Summary of Temporary and Preliminary Notices](#) publication for details.

Newfoundland and Labrador Coast

No notices applicable for this edition.

Atlantic Coast

Temporary Notices

***809(T)/22 Port de Montréal – Waterway Information: Calculation of Under-Keel Clearance**

Reference chart: 1310

Canadian Coast Guard Marine Communications and Traffic Services has been using all Canadian Hydrographic Service water-level stations for the calculation of passage authorizations in the Sorel–Montreal sector of the navigational waterway, namely Sorel, Contrecoeur, Varennes, Montreal-Frontenac and Montreal-Jetty No. 1.

In light of the particular features of the navigational waterway in the portion between buoys M84 (downstream of the municipality of Verchères) and M157 (opposite to the Port of Montreal, section 109) as well as the No. 1 Anchorage Pointe-aux-Tremble, it was agreed to adjust upward the available water column by 10 cm in this portion.

The minimum water column in this portion of the navigational waterway as per the Varennes hydrographic station, obtained after adjustment, will be used for the calculation of under-keel clearance.

(NW-Q-0776-22)

***810(T)/22 Île du Petit Mécatina aux/to Îles Sainte-Marie – Waterway Information: Shoal**

Reference chart: 4468

Rocky shoal located at the entrance to Harrington Harbour. Navigation must take place between the wharf and the red lantern at 50° 29.832'N 059° 28.581'W.

(NW-Q-1494-20)

***811(T)/22 Cap-aux-Meules – Waterway Information: Restrictions**

Reference chart: 4956

Restrictions in place and mooring prohibited in certain areas at the fishermen's wharf, at the port of Cap-aux-Meules.

Contact the port manager for more information at 418-937-7635.

(NW-Q-0199-21)

Preliminary Notices

Atlantic Region

Comment Submission

Comments on proposed changes in preliminary (P) notices are solicited from mariners and other interested parties within three months of the initial publication date. Following this date, the notices will be cancelled. Any objections raised must state the facts on which they are based and should include supporting information on safety, commerce and public benefit.

Comments should be directed to the following:

Superintendent,
Aids to Navigation & Waterways
Canadian Coast Guard, Atlantic Region
P.O. Box 1000
50 Discovery Drive
Dartmouth, NS B2Y 3Z8
Telephone: (506) 636-4708
Email: [DFO.CCGATLAidstoNavDiscont-
AidesalanavSupprATLGCC.MPO@dfo-mpo.gc.ca](mailto:DFO.CCGATLAidstoNavDiscont-AidesalanavSupprATLGCC.MPO@dfo-mpo.gc.ca)

***812(P)/22 Halifax Harbour: Black Point to / à Point Pleasant – Aid to Navigation to be Discontinued**

Reference chart: 4203

The Canadian Coast Guard proposes to permanently discontinue the following aid to navigation:

Aid Name	LL #	Position
Herring Cove Breakwater	522.1	44° 34' 09.6"N 063° 33' 25.4"W

Initial publication date: Friday, August 26, 2022

Comment submission deadline: Thursday, November 24, 2022

(F2022-015)

Inland Waters

Temporary Notices

***813(T)/22 Lac Saint-Louis – Obstruction: Rock**

Reference chart: 1430

Uncharted rock with 30 centimetres protruding above the surface reported at 45° 25.062'N 073° 52.098'W.

(NW-Q-0813-22)

Preliminary Notices

Central Region

Comment Submission

Comments on proposed changes in preliminary (P) notices are solicited from mariners and other interested parties within three months of the initial publication date. Following this date, the notices will be cancelled. Any objections raised must state the facts on which they are based and should include supporting information on safety, commerce and public benefit.

Comments should be directed to the following:

Superintendent, Mathieu Roy
Aids to Navigation & Waterways
Canadian Coast Guard, Central Region
1550 D'Estimauville Avenue
Québec, QC G1J 5E9
Telephone: (418) 648-7450
Email: mathieu.roy@dfo-mpo.gc.ca

***814(P)/22 Lake Nipissing / Lac Nipissing (Eastern Portion / Partie est) – Unlit Buoy to be Discontinued**

Reference chart: 6035

The Canadian Coast Guard proposes to permanently discontinue the following aid to navigation:

Aid Name	LL #	Position
Buoy K8	9327	46° 14' 48.7"N 079° 25' 03.6"W

Initial publication date: Friday, August 26, 2022

[Comment submission deadline](#): Thursday, November 24, 2022

(D2022-030)

***815(P)/22 Iron Island to à West Bay – Range Lights to be Discontinued**

Reference Chart: 6037

The Canadian Coast Guard proposes to permanently discontinue the following aids to navigation:

Aid Name	LL #	Position
Sturgeon River front range	1442	46° 19' 11.0"N 079° 58' 05.0"W
Sturgeon River rear range	1443	308°30' 466 m from front

Initial publication date: Friday, August 26, 2022

[Comment submission deadline](#): Thursday, November 24, 2022

(D2022-027)

Other (T) & (P) Notices

Temporary Notices

No notices applicable for this edition.

Preliminary Notices

*816(P)/22 Canadian Hydrographic Service – Raster Navigational Charts to be Discontinued

The Canadian Hydrographic Service (CHS) has commenced the discontinuation, in progressive phases, of all of its digital Raster Navigational Charts (RNC) offered in BSB format.

CHS will support Global Navigation Satellite System (GNSS) users by offering Electronic Navigational Charts (ENC) in S-57 format, as well as non-GNSS users by continuing to offer Paper Charts.

To learn more about the advantages of ENC over RNC, please visit <https://charts.gc.ca/charts-cartes/digital-electronique/raster-enc-eng.html>.

Charts to be cancelled in the second phase of this initiative are listed below.

Comments on this action are solicited from mariners and other interested parties by Thursday, November 24, 2022, three months following the initial publication date of Friday, August 26, 2022. Following this date, this notice will be cancelled.

Any objections raised must state the facts on which they are based and should include supporting information on safety, commerce and public benefit.

Comments should be directed to the following email address: chsinfo@dfo-mpo.gc.ca.

BSB Chart	Title	BSB Chart	Title
RM-1400	Montréal to/à Lake/Lac Ontario	RM-2050	Oshawa Harbour
RM-1431	Canal de Beauharnois	RM-2060	Main Duck Island to/à Scotch Bonnet Island
RM-1432	Lac Saint-François/Lake St. Francis	RM-2067	Hamilton Harbour
RM-1433	Île St-Régis to/à Croil Islands	RM-2077	Lake Ontario/Lac Ontario (Western Portion/Partie Ouest)
RM-1434	Croil Islands to/à Cardinal	RM-2085	Toronto Harbour
RM-1435	Cardinal to/à Whaleback Shoal	RM-2086	Toronto to/à Hamilton
RM-1436	Whaleback Shoal to/au Summerland Group	RM-2110	Long Point Bay
RM-1437	Summerland Group to/à Grindstone Island	RM-2120	Niagara River to/à Long Point
RM-1438	Grindstone Island to/à Carleton Island	RM-2121	Long Point to/à Port Glasgow
RM-1439	Carleton Island to/au Charity Shoal	RM-2122	Pointe aux Pins to/à Point Pelee
RM-2011	Belleville Harbour	RM-2123	Pelee Passage to/à la Detroit River
RM-2017	Kingston Harbour and Approaches/et les approches	RM-2181	Harbours in Lake Erie/Havres dans le lac Érié
RM-2018	Lower Gap to/à Adolphus Reach	RM-2205	Killarney to/à Little Current
RM-2019	Adolphus Reach to/à Big Bay	RM-2224	Rose Island to/à Parry Sound
RM-2020	Belleville to/à Presqu'île Bay	RM-2228	Lake Huron/Lac Huron (Southern Portion/Partie sud)
RM-2042	Welland Canal St.Catharines to/à Port Colborne	RM-2235	Cape Hurd to/à Lonely Island
RM-2047	Clarkson Harbour	RM-2241	Port Severn to/à Christian Island

BSB Chart	Title	BSB Chart	Title
RM-2242	Giants Tomb Island to/à Franklin Island	RM-3931	Smith Inlet, Boswell Inlet and/et Draney Inlet
RM-2250	Bruce Mines to/à Sugar Island	RM-3932	Rivers Inlet
RM-2260	Sarnia to/à Bayfield	RM-3934	Approaches to/Approches à Smith Sound and/et Rivers Inlet
RM-2261	Bayfield to/à Douglas Point	RM-3944	Princess Royal Channel
RM-2266	Michael's Bay to/à Great Duck Island	RM-4010	Bay of Fundy / Baie de Fundy: Inner portion / partie intérieure
RM-2267	Great Duck Island to/à False Detour Passage	RM-4012	Yarmouth to / à Halifax
RM-2273	South Baymouth Harbour and Approaches	RM-4115	Passamaquoddy Bay and / et St. Croix River
RM-2274	Cape Hurd to/à Tobermory and/et Cove Island	RM-4116	Approaches to / Approches à Saint John
RM-2283	Owen Sound to/à Giant's Tomb Island	RM-4118	St. Marys Bay
RM-2291	Point Clark to/à Southampton	RM-4209	Lockeport Harbour and / et Shelburne Harbour
RM-2292	Chantry Island to Cove Island	RM-4210	Cape Sable to / à Pubnico Harbour
RM-2314	Port of Thunder Bay	RM-4233	Cape Canso to / à Country Island
RM-3475	Plans – Stuart Channel	RM-4234	Country Island to / à Barren Island
RM-3477	Plans – Gulf Islands	RM-4235	Barren Island to / à Taylors Head
RM-3478	Plans – Saltspring Island	RM-4236	Taylors Head to / à Shut-in Island
RM-3479	Approaches to/Approches à Sidney	RM-4237	Approaches to / Approches de Halifax Harbour
RM-3552	Seymour Inlet and/et Belize Inlet	RM-4240	Liverpool Harbour to / à Lockeport Harbour
RM-3554	Plans – Desolation Sound	RM-4243	Tusket Islands to / à Cape St Marys
RM-3623	Kyuquot Sound to/à Cape Cook	RM-4342	Grand Manan (Harbours / Havres)
RM-3624	Cape Cook to Cape Scott	RM-4381	Mahone Bay
RM-3670	Broken Group	RM-4396	Annapolis Basin
RM-3673	Clayoquot Sound, Tofino Inlet to/à Millar Channel	RM-4530	Hamilton Sound: Eastern Portion / Partie-est
RM-3679	Quatsino Sound	RM-4617	Red Island to / à Pinchgut Point
RM-3685	Tofino	RM-4644	Bay D'Espoir and / et Hermitage Bay
RM-3686	Approaches to/Approches à Winter Harbour	RM-4653	Bay of Islands
RM-3795	Langley Passage, Estevan Group	RM-4722	Terrington Basin
RM-3909	Plans – Chatham Sound	RM-4823	Cape Ray to / à Garia Bay
RM-3910	Plans – Milbanke Sound and/et Beauchemin Channel	RM-4824	Garia Bay to / à Burgeo
RM-3911	Plans – Vicinity of/Proximité de Princess Royal Island	RM-4825	Burgeo and / et Ramea Islands
RM-3912	Plans, Vicinity of/Proximité de Banks Island	RM-4826	Burgeo to / à François
RM-3920	Nass Bay, Alice Arm and Approaches/et les approches	RM-4827	Hare Bay to / à Fortune Head
RM-3921	Fish Egg Inlet and/et Allison Harbour	RM-4830	Great Bay de l'Eau and Approaches / et les approches

BSB Chart	Title	BSB Chart	Title
RM-4831	Fortune Bay: Northern Portion / Partie Nord	RM-5042	Cut Throat Island to / à Quaker Hat
RM-4832	Fortune Bay: Southern Portion / Partie Sud	RM-5043	Quaker Hat to / à Cape Harrison
RM-4839	Head of / Fond de Placentia Bay	RM-5044	Cape Harrison to / à Dog Islands
RM-4841	Cape St Mary's to / à Argentia	RM-5045	Dog Islands to / à Cape Makkovik
RM-4842	Cape Pine to / au Cape St Mary's	RM-5046	Kaipokok Bay and Cape Makkovik to / à Winsor Harbour Island
RM-4843	Head of / Fond de St Mary's Bay	RM-5047	Winsor Harbour Island to / aux Kikkertaksoak Islands
RM-4844	Cape Pine to / à Renews Harbour	RM-5048	Cape Harrigan to / aux Kidlit Islands
RM-4846	Motion Bay to / à Cape St Francis	RM-5049	Davis Inlet to / aux Seniartlit Islands
RM-4847	Conception Bay	RM-5051	Nunaksuk Island to / aux Calf Cow and / et Bull Islands
RM-4848	Holyrood and / et Long Pond	RM-5052	Seniartlit Islands to / à Nain
RM-4849	Plans, Conception Bay, Trinity Bay and / et Bonavista Harbour	RM-5054	South Auliatsivik Island to / à Fenstone Tickle Island
RM-4850	Cape St Francis to / à Baccalieu Island and / et Heart's Content	RM-5055	Cape Kiglapait to / à Khikkertarsoak North Island
RM-4851	Trinity Bay: Southern Portion / Partie Sud	RM-5056	Khikkertarsoak North Island to / à Morhardt Point
RM-4852	Smith Sound and / et Random Sound	RM-5057	Hare Islands to / à North Head
RM-4853	Trinity Bay: Northern Portion / Partie Nord	RM-5058	North Head to / à Murphy Head
RM-4854	Catalina Harbour to / à Inner Gooseberry Islands	RM-5059	Saglek Bay
RM-4855	Bonavista Bay: Southern Portion / Partie sud	RM-5060	Cape Daly to / à Amiktok Island
RM-4856	Bonavista Bay: Western Portion / Partie ouest	RM-5061	Amiktok Island to / à Osborne Point
RM-4857	Indian Bay to / à Wadham Islands	RM-5062	Osborne Point to / à Cape Kakkiviak
RM-4861	Fogo Island Northern Portion / Partie Nord	RM-5063	Cape Kakkiviak to / à Duck Islands
RM-4862	Carmanville to / à Bacalhoa Island and / et Fogo	RM-5064	McLelan Strait
RM-4863	Bacalhao Island to / à Black Island	RM-5065	Gray Strait and / et Button Islands
RM-4865	Approaches to / Approches à Lewisporte and / et Loon Bay	RM-5070	Satsoak Island to / à Akuliakatak Peninsula
RM-4866	Botwood and Approaches / et les approches	RM-5133	Domino Point to / à Cape North
RM-4881	Gregory Island to Rocky Harbour	RM-5134	Approaches to / Approches À Cartwright: Black Island to / à Tumbledown Dick Island
RM-4886	Twillingate Harbours	RM-5135	Approaches to / Approches À Hamilton Inlet
RM-4940	Northumberland Strait Central Portion - Ports/Harbours	RM-5138	Sandwich Bay
RM-5030	Green Bay to / à Double Island	RM-5162	Groswater Bay
RM-5031	St. Lewis Sound and / et Inlet	RM-5163	Ticoralak Head to/à Green Island
RM-5032	Approaches to / à White Bear Arm	RM-5164	Lake Melville
RM-5033	Hawke Bay and / et Squasho Run	RM-5165	Epinette Point to/à Terrington Basin

Section 2: Chart Corrections

1312 - Lac Saint-Pierre - New Edition - 10-MAY-2019 - NAD 1983

05-AUG-2022

LNMD. 24-SEP-2021

Amend FG13m15M to read FG13m16M against front leading light
(See Chart No. 1, P16)
This notice affects Electronic Navigational Chart: CA479129
(Q2022035) LL(2177) DFO(6410690-01)

Amend FG31m15M to read FG31m16M against rear leading light
(See Chart No. 1, P16)
This notice affects Electronic Navigational Chart: CA479129
(Q2022036) LL(2178) DFO(6410691-01)

12-AUG-2022

LNMD. 05-AUG-2022

Amend F G 29m15M to read F G 29m12M against light
(See Chart No. 1, P16)
This notice affects Electronic Navigational Chart: CA479129
(Q2022037) LL(2118) DFO(6410694-01)

Amend F G 9m15M to read F G 9m12M against light
(See Chart No. 1, P16)
This notice affects Electronic Navigational Chart: CA479129
(Q2022038) LL(2117) DFO(6410695-01)

1313 - Batiscan au/to Lac Saint-Pierre - New Edition - 08-MAR-2019 - NAD 1983

12-AUG-2022

LNMD. 24-JUN-2022

Amend F G 29m15M to read F G 29m12M against light
(See Chart No. 1, P16)
This notice affects Electronic Navigational Chart: CA479129
(Q2022037) LL(2118) DFO(6410694-01)

Amend F G 9m15M to read F G 9m12M against light
(See Chart No. 1, P16)
This notice affects Electronic Navigational Chart: CA479129
(Q2022038) LL(2117) DFO(6410695-01)

1320 - Île du Bic au/to Cap de la Tête au Chien - New Chart - 26-AUG-2011 - NAD 1983

05-AUG-2022

LNMD. 17-JUN-2022

Delete front range light FR 12m16M
(See Chart No. 1, P20.2)
This notice affects Electronic Navigational Chart: CA279037, CA379232, CA579233
(Q2022033) LL(1754.2) DFO(6410688-01)

Delete rear range light FR 12m16M, with leading line on a bearing of 122° and
a reciprocal 302°
(See Chart No. 1, P20.2)
This notice affects Electronic Navigational Chart: CA279037, CA379232, CA579233
(Q2022034) LL(1754.3) DFO(6410689-01)

1510 - Lac Saint-Louis à/to Carillon - B-C - Sheet/Feuille 1 - New Edition - 25-OCT-2019 - NAD 1983

05-AUG-2022

LNMD. 17-SEP-2021

Add Red Starboard lighted Conical buoy FIR 4s, marked H92
This notice affects Electronic Navigational Chart: CA479202
(Q2022024) LL(1245.5) DFO(6410678-01)

2201 - Georgian Bay / Baie Georgienne - New Edition - 01-MAY-2020 - World Geodetic System 1984

19-AUG-2022

LNMD. 02-APR-2021

Amend FI 4s 72ft to read FI against light
(See Chart No. 1, P16)

45°55'42.4"N 081°36'07.5"W

DFO(6604880-02)

2202 - Twelve Mile Bay to/à Rose Island - Sheet/Feuille 3 - New Edition - 05-JAN-2007 - NAD 1983

05-AUG-2022

LNMD. 08-JUL-2022

Add depth of 6 feet
(See Chart No. 1, I10)

45°14'56.8"N 080°13'47.9"W

DFO(6604883-01)

Delete depth of 13 feet
(See Chart No. 1, I10)

45°08'53.7"N 080°05'02.2"W

DFO(6604883-02)

Delete depth of 6 feet
(See Chart No. 1, I10)

45°08'52.0"N 080°04'59.0"W

DFO(6604883-03)

Add depth of 6 feet
(See Chart No. 1, I10)

45°08'53.2"N 080°05'00.9"W

DFO(6604883-04)

Add depth of 7 feet
(See Chart No. 1, I10)

45°07'54.5"N 080°07'05.6"W

DFO(6604883-05)

Delete depth of 24 feet
(See Chart No. 1, I10)

45°12'05.3"N 080°12'33.3"W

DFO(6604883-06)

Add depth of 15 feet
(See Chart No. 1, I10)

45°12'06.0"N 080°12'32.0"W

DFO(6604883-07)

Add depth of 18 feet
(See Chart No. 1, I10)

45°10'05.2"N 080°07'51.0"W

DFO(6604883-08)

2203 - Carling Rock to/à Twin Sisters Island - Sheet/Feuille 1 - New Edition - 26-MAY-2006 - NAD 1983

05-AUG-2022

LNMD. 10-DEC-2021

Add depth of 8 feet
(See Chart No. 1, I10)

45°27'09.7"N 080°26'24.1"W

DFO(6604884-06)

Delete depth of 13 feet
(See Chart No. 1, I10)

45°27'49.3"N 080°25'23.2"W

DFO(6604884-07)

Add depth of 8 feet
(See Chart No. 1, I10)

45°27'48.9"N 080°25'24.1"W

DFO(6604884-08)

2203 - Raspberry Island to/à Isle of Pines - Sheet/Feuille 2 - New Edition - 26-MAY-2006 - NAD 1983

05-AUG-2022

LN/D. 10-DEC-2021

Delete depth of 9 feet
(See Chart No. 1, I10) 45°35'05.3"N 080°31'53.5"W

DFO(6604884-03)

Add depth of 5 feet
(See Chart No. 1, I10) 45°35'05.4"N 080°31'53.0"W

DFO(6604884-04)

2203 - Twin Sisters Island to/à Raspberry Island and/et Tonches Island - Sheet/Feuille 2 - New Edition - 26-MAY-2006 - NAD 1983

05-AUG-2022

LN/D. 10-DEC-2021

Add depth of 7 feet
(See Chart No. 1, I10) 45°32'04.7"N 080°24'23.5"W

DFO(6604884-05)

Add depth of 8 feet
(See Chart No. 1, I10) 45°27'09.7"N 080°26'24.1"W

DFO(6604884-06)

Delete depth of 13 feet
(See Chart No. 1, I10) 45°27'49.3"N 080°25'23.2"W

DFO(6604884-07)

Add depth of 8 feet
(See Chart No. 1, I10) 45°27'48.9"N 080°25'24.1"W

DFO(6604884-08)

Add depth of 13 feet
(See Chart No. 1, I10) 45°32'28.2"N 080°26'01.8"W

DFO(6604884-09)

2203 - Isle of Pines to/à Byng Inlet - Sheet/Feuille 3 - New Edition - 26-MAY-2006 - NAD 1983

05-AUG-2022

LN/D. 10-DEC-2021

Delete depth of 10 feet
(See Chart No. 1, I10) 45°45'17.4"N 080°40'14.5"W

DFO(6604884-01)

Add depth of 3 feet
(See Chart No. 1, I10) 45°45'17.9"N 080°40'14.5"W

DFO(6604884-02)

2204 - A to B - Sheet/Feuille 1 - New Edition - 05-MAR-2010 - NAD 1983

05-AUG-2022

LN/D. 01-JUL-2022

Delete depth of 9 feet
(See Chart No. 1, I10) 45°50'59.2"N 080°44'25.3"W

DFO(6604887-01)

Add depth of 6 feet
(See Chart No. 1, I10) 45°50'58.9"N 080°44'24.5"W

DFO(6604887-02)

Add depth of 8 feet
(See Chart No. 1, I10) 45°48'26.0"N 080°42'37.8"W

DFO(6604887-03)

Delete	depth of 25 feet (See Chart No. 1, I10)	45°48'05.2"N 080°41'03.1"W <i>DFO(6604887-04)</i>
Add	depth of 12 feet (See Chart No. 1, I10)	45°48'04.5"N 080°41'01.8"W <i>DFO(6604887-05)</i>
Delete	depth of 31 feet (See Chart No. 1, I10)	45°48'14.4"N 080°42'25.5"W <i>DFO(6604887-08)</i>
Add	depth of 13 feet (See Chart No. 1, I10)	45°48'14.0"N 080°42'23.9"W <i>DFO(6604887-09)</i>
Delete	depth of 10 feet (See Chart No. 1, I10)	45°45'17.2"N 080°40'16.1"W <i>DFO(6604887-10)</i>
Add	depth of 3 feet (See Chart No. 1, I10)	45°45'18.0"N 080°40'14.6"W <i>DFO(6604887-11)</i>

2204 - Beaverstone Bay to/à Killarney - Sheet/Feuille 4 - New Edition - 05-MAR-2010 - NAD 1983
05-AUG-2022

LNМ/D. 01-JUL-2022

Delete	depth of 22 feet (See Chart No. 1, I10)	45°58'52.1"N 081°25'29.8"W <i>DFO(6604887-06)</i>
Add	depth of 11 feet (See Chart No. 1, I10)	45°58'51.6"N 081°25'30.9"W <i>DFO(6604887-07)</i>

2205 - Killarney to/à Little Current - Sheet/Feuille 1 - New Edition - 09-JUL-2010 - NAD 1983
19-AUG-2022

LNМ/D. 19-MAY-2017

Reposition	light, marked FI (See Chart No. 1, P1) This notice affects Electronic Navigational Chart: CA373054, CA473229	from 45°55'42.0"N 081°36'07.6"W to 45°55'42.4"N 081°36'07.5"W <i>(D2022021) LL(987) DFO(6604880-01)</i>
------------	--	---

2242 - Giants Tomb Island to/à Franklin Island - New Chart - 07-JAN-2005 - NAD 1983
05-AUG-2022

LNМ/D. 03-SEP-2021

Delete	depth of 2 metres (See Chart No. 1, I10) This notice affects Electronic Navigational Chart: CA373311	45°25'01.9"N 080°26'08.2"W <i>DFO(6604876-01)</i>
Add	obstruction with known depth of 1.8 metres (See Chart No. 1, K41) This notice affects Electronic Navigational Chart: CA373311	45°25'01.2"N 080°26'13.9"W <i>DFO(6604876-02)</i>
Delete	Rep (2021) against obstruction (See Chart No. 1, K41) This notice affects Electronic Navigational Chart: CA373311	45°24'00.8"N 080°32'20.0"W <i>DFO(6604876-03)</i>

Delete	Rep (2021) against obstruction (See Chart No. 1, K41)	45°24'41.6"N 080°29'03.5"W <i>DFO(6604876-04)</i>
2243 - Bateau Island to/à Byng Inlet - New Edition - 30-AUG-1985 - NAD 1927		
05-AUG-2022		LN/D. 03-SEP-2021
Add	depth of 3 feet (See Chart No. 1, I10)	45°45'17.7"N 080°40'15.0"W <i>DFO(6604872-01)</i>
Add	depth of 13 feet (See Chart No. 1, I10) This notice affects Electronic Navigational Chart: CA373053	45°32'28.0"N 080°26'02.2"W <i>DFO(6604872-02)</i>
Add	depth of 4 feet (See Chart No. 1, I10) This notice affects Electronic Navigational Chart: CA373053	45°26'03.2"N 080°25'17.5"W <i>DFO(6604872-03)</i>
Delete	Rep (2021) against obstruction (See Chart No. 1, K41) This notice affects Electronic Navigational Chart: CA373053	45°27'06.4"N 080°27'19.4"W <i>DFO(6604872-04)</i>
Delete	Rep (2021) against obstruction (See Chart No. 1, K41)	45°45'42.8"N 080°41'09.9"W <i>DFO(6604872-05)</i>
Delete	Rep (2021) against obstruction (See Chart No. 1, K41) This notice affects Electronic Navigational Chart: CA373053	45°30'19.3"N 080°34'26.3"W <i>DFO(6604872-06)</i>
Delete	Rep (2021) against obstruction (See Chart No. 1, K41)	45°25'01.7"N 080°26'08.8"W <i>DFO(6604872-07)</i>
Delete	depth of 9 feet (See Chart No. 1, I10)	45°25'01.1"N 080°26'14.1"W <i>DFO(6604872-08)</i>
Add	depth of 6 feet (See Chart No. 1, I10)	45°25'01.1"N 080°26'14.1"W <i>DFO(6604872-09)</i>
Add	depth of 6 feet (See Chart No. 1, I10) This notice affects Electronic Navigational Chart: CA373053	45°32'24.3"N 080°31'16.7"W <i>DFO(6604872-10)</i>
Add	depth of 7 feet (See Chart No. 1, I10) This notice affects Electronic Navigational Chart: CA373053	45°26'02.8"N 080°27'19.5"W <i>DFO(6604872-11)</i>
Delete	Rep (2021) against obstruction (See Chart No. 1, K41)	45°43'52.6"N 080°44'13.3"W <i>DFO(6604872-12)</i>

Delete	Rep (2021) against obstruction (See Chart No. 1, K41) This notice affects Electronic Navigational Chart: CA373053	45°24'19.4"N 080°32'46.6"W <i>DFO(6604872-13)</i>
Delete	Rep (2021) against obstruction (See Chart No. 1, K41)	45°24'00.6"N 080°32'37.7"W <i>DFO(6604872-14)</i>
Delete	Rep (2021) against obstruction (See Chart No. 1, K41)	45°24'45.4"N 080°29'20.6"W <i>DFO(6604872-15)</i>
Delete	depth of 13 feet (See Chart No. 1, I10)	45°41'18.1"N 080°39'39.6"W <i>DFO(6604872-16)</i>
Add	depth of 4 feet (See Chart No. 1, I10)	45°41'20.7"N 080°39'35.0"W <i>DFO(6604872-17)</i>
Delete	depth of 20 feet (See Chart No. 1, I10) This notice affects Electronic Navigational Chart: CA373053	45°32'02.7"N 080°24'29.1"W <i>DFO(6604872-18)</i>
Add	depth of 7 feet (See Chart No. 1, I10) This notice affects Electronic Navigational Chart: CA373053	45°32'04.6"N 080°24'24.1"W <i>DFO(6604872-19)</i>
2244 - Alexander Passage to à Beaverstone Bay - New Edition - 03-NOV-2000 - NAD 1983 05-AUG-2022		LN/D. 03-SEP-2021
Add	depth of 3 feet (See Chart No. 1, I10) This notice affects Electronic Navigational Chart: CA373052	45°45'17.9"N 080°40'14.5"W <i>DFO(6604878-01)</i>
Add	rock which covers and uncovers with drying height of 1 foot (See Chart No. 1, K11) This notice affects Electronic Navigational Chart: CA373052	45°46'55.6"N 080°41'11.8"W <i>DFO(6604878-02)</i>
Delete	depth of 25 feet (See Chart No. 1, I10) This notice affects Electronic Navigational Chart: CA373052	45°48'04.6"N 080°41'03.2"W <i>DFO(6604878-03)</i>
Add	depth of 12 feet (See Chart No. 1, I10) This notice affects Electronic Navigational Chart: CA373052	45°48'04.4"N 080°41'01.7"W <i>DFO(6604878-04)</i>
Delete	Rep (2021) against obstruction (See Chart No. 1, K41) This notice affects Electronic Navigational Chart: CA373052	45°45'43.0"N 080°41'09.4"W <i>DFO(6604878-05)</i>

Delete	Rep (2021) against obstruction (See Chart No. 1, K41) This notice affects Electronic Navigational Chart: CA373052	45°43'52.8"N 080°44'12.8"W <i>DFO(6604878-06)</i>
Delete	depth of 13 feet (See Chart No. 1, I10) This notice affects Electronic Navigational Chart: CA373052	45°41'18.3"N 080°39'39.1"W <i>DFO(6604878-07)</i>
Add	depth of 4 feet (See Chart No. 1, I10) This notice affects Electronic Navigational Chart: CA373052	45°41'20.9"N 080°39'34.5"W <i>DFO(6604878-08)</i>
2245 - Beaverstone Bay to/à Lonely Island and/et McGregor Bay - New Edition - 26-JUL-2002 - NAD 1983		
05-AUG-2022		LNM/D. 07-DEC-2018
Delete	depth of 32 feet (See Chart No. 1, I10) This notice affects Electronic Navigational Chart: CA373054	45°54'42.2"N 081°18'49.9"W <i>DFO(6604879-01)</i>
Add	depth of 11 feet (See Chart No. 1, I10) This notice affects Electronic Navigational Chart: CA373054	45°54'40.2"N 081°18'50.3"W <i>DFO(6604879-02)</i>
19-AUG-2022		LNM/D. 05-AUG-2022
Reposition	light, marked FI (See Chart No. 1, P1) This notice affects Electronic Navigational Chart: CA373054, CA473229	from 45°55'42.0"N 081°36'07.6"W to 45°55'42.4"N 081°36'07.5"W <i>(D2022021) LL(987) DFO(6604880-01)</i>
2273 - South Baymouth Harbour and Approaches - New Edition - 28-AUG-2015 - World Geodetic System 1984		
05-AUG-2022		LNM/D. 22-JUL-2016
Replace	depth of 1.6 metres with depth of 0.4 metres (See Chart No. 1, I10) This notice affects Electronic Navigational Chart: CA573461	45°33'09.0"N 082°01'07.9"W <i>DFO(6604886-01)</i>
2283 - Meaford - New Edition - 31-AUG-2012 - World Geodetic System 1984		
05-AUG-2022		LNM/D. 01-JAN-2016
Add	depth of 1.9 metres (See Chart No. 1, I10)	44°36'41.7"N 080°35'26.8"W <i>DFO(6604885-01)</i>
2283 - Owen Sound Harbour - New Edition - 31-AUG-2012 - World Geodetic System 1984		
05-AUG-2022		LNM/D. 01-JAN-2016
Delete	depth of 2.6 metres (See Chart No. 1, I10) This notice affects Electronic Navigational Chart: CA573368	44°35'49.2"N 080°55'42.4"W <i>DFO(6604885-02)</i>
Add	depth of 1.8 metres (See Chart No. 1, I10) This notice affects Electronic Navigational Chart: CA573368	44°35'48.3"N 080°55'42.1"W <i>DFO(6604885-03)</i>

2293 - Byng Inlet and Approaches / et les approches - New Edition - 30-MAR-2001 - NAD 1983

05-AUG-2022

LNMD. 03-SEP-2021

Delete Rep (2021) against obstruction
(See Chart No. 1, K41)
This notice affects Electronic Navigational Chart: CA573231

45°43'52.0"N 080°44'10.0"W

DFO(6604888-01)

Delete depth of 10 feet
(See Chart No. 1, I10)
This notice affects Electronic Navigational Chart: CA573231

45°45'17.4"N 080°40'16.3"W

DFO(6604888-02)

Add depth of 3 feet
(See Chart No. 1, I10)
This notice affects Electronic Navigational Chart: CA573231

45°45'18.0"N 080°40'14.6"W

DFO(6604888-03)

4001 - Gulf of Maine to Strait of Belle Isle / au Detroit de Belle Isle - New Edition - 01-DEC-1995 - NAD 1983

12-AUG-2022

LNMD. 17-JUN-2022

Add obstruction, depth unknown PA with legend Rep (2022)
(See Chart No. 1, K40)
This notice affects Electronic Navigational Chart: CA276801, CA476009

44°19'46.8"N 063°21'15.0"W

DFO(6310190-01)

4003 - Cape Breton to / à Cape Cod - New Edition - 21-MAR-2003 - NAD 1983

12-AUG-2022

LNMD. 03-JUN-2022

Delete subsurface Ocean Data Acquisition System ODAS/SADO with known
depth of 1763 fathoms
(See Chart No. 1, L25)
This notice affects Electronic Navigational Chart: CA176140

42°23'27.3"N 061°16'44.3"W

DFO(6310188-01)

Add obstruction, depth unknown PA with legend Rep (2022)
(See Chart No. 1, K40)
This notice affects Electronic Navigational Chart: CA276801, CA476009

44°19'46.8"N 063°21'15.0"W

DFO(6310190-01)

4012 - Yarmouth to / à Halifax - New Edition - 14-FEB-2003 - NAD 1983

12-AUG-2022

LNMD. 06-MAY-2022

Add obstruction, depth unknown PA with legend Rep (2022)
(See Chart No. 1, K40)
This notice affects Electronic Navigational Chart: CA276801, CA476009

44°19'46.8"N 063°21'15.0"W

DFO(6310190-01)

4013 - Halifax to / à Sydney - New Edition - 06-SEP-2002 - NAD 1983

12-AUG-2022

LNMD. 22-JUL-2022

Add obstruction, depth unknown PA with legend Rep (2022)
(See Chart No. 1, K40)
This notice affects Electronic Navigational Chart: CA276801, CA476009

44°19'46.8"N 063°21'15.0"W

DFO(6310190-01)

4015 - Sydney to / à Saint-Pierre - New Edition - 28-MAR-2003 - NAD 1983

12-AUG-2022

LNMD. 29-JUL-2022

Add	depth of 11 fathoms (See Chart No. 1, I10) This notice affects Electronic Navigational Chart: CA276091, CA376164	46°53'30.4"N 056°04'17.5"W <i>DFO(6310186-01)</i>
Delete	depth of 20 fathoms (See Chart No. 1, I10) This notice affects Electronic Navigational Chart: CA276091, CA376164	46°53'14.0"N 056°03'58.5"W <i>DFO(6310186-02)</i>
Add	depth of 15 fathoms (See Chart No. 1, I10) This notice affects Electronic Navigational Chart: CA276091, CA376164	46°53'06.0"N 056°03'19.1"W <i>DFO(6310186-03)</i>
Delete	depth of 21 fathoms (See Chart No. 1, I10)	46°51'49.0"N 056°03'19.0"W <i>DFO(6310186-04)</i>
Add	depth of 6 fathoms, 4 feet (See Chart No. 1, I10) This notice affects Electronic Navigational Chart: CA276091, CA376164	46°51'57.2"N 056°03'04.5"W <i>DFO(6310186-05)</i>

4016 - Saint-Pierre to / à St. John's - New Edition - 06-JUN-2003 - NAD 1983

12-AUG-2022

LNMD. 29-JUL-2022

Add	depth of 11 fathoms (See Chart No. 1, I10) This notice affects Electronic Navigational Chart: CA276091, CA376164	46°53'30.4"N 056°04'17.5"W <i>DFO(6310186-01)</i>
Delete	depth of 20 fathoms (See Chart No. 1, I10) This notice affects Electronic Navigational Chart: CA276091, CA376164	46°53'14.0"N 056°04'00.0"W <i>DFO(6310186-02)</i>
Add	depth of 15 fathoms (See Chart No. 1, I10) This notice affects Electronic Navigational Chart: CA276091, CA376164	46°53'06.0"N 056°03'19.1"W <i>DFO(6310186-03)</i>
Delete	depth of 21 fathoms (See Chart No. 1, I10)	46°51'49.0"N 056°03'28.0"W <i>DFO(6310186-04)</i>
Add	depth of 6 fathoms, 4 feet (See Chart No. 1, I10) This notice affects Electronic Navigational Chart: CA276091, CA376164	46°51'57.2"N 056°03'04.5"W <i>DFO(6310186-05)</i>

4020 - Strait of Belle Isle / Détroit de Belle Isle - New Edition - 26-JUL-2002 - NAD 1983

05-AUG-2022

LNMD. 09-JUL-2021

Delete	fog signal Fog Sig 60s against light (See Chart No. 1, R1, R20) This notice affects Electronic Navigational Chart: CA476360	52°10'03.1"N 055°38'24.1"W <i>(N2022122) LL(279) DFO(6310182-01)</i>
--------	---	---

4021 - Pointe Amour à / to Cape Whittle et / and Cape George - New Edition - 01-NOV-2002 - NAD 1983

26-AUG-2022

LNMD. 29-APR-2022

Delete	depth of 7 fathoms 3 feet (See Chart No. 1, I10) This notice affects Electronic Navigational Chart: CA276138	50°28'21.4"N 059°30'04.0"W	<i>DFO(6310192-01)</i>
Delete	depth of 15 fathoms (See Chart No. 1, I10) This notice affects Electronic Navigational Chart: CA276138	50°27'15.7"N 059°29'30.9"W	<i>DFO(6310192-02)</i>
Add	depth of 6 fathoms 5 feet (See Chart No. 1, I10) This notice affects Electronic Navigational Chart: CA276138	50°27'31.8"N 059°29'37.0"W	<i>DFO(6310192-03)</i>
Add	depth of 3 fathoms 1 foot (See Chart No. 1, I10) This notice affects Electronic Navigational Chart: CA276138	50°28'14.5"N 059°30'05.5"W	<i>DFO(6310192-04)</i>

4025 - Cap Whittle à/to Havre-Saint-Pierre et/and Île d'Anticosti - New Edition - 28-MAR-2014 - NAD 1983

12-AUG-2022

LNMD. 30-JUL-2021

Delete	depth of 3 metres 4 decimetres (See Chart No. 1, I10) This notice affects Electronic Navigational Chart: CA279044	50°14'44.8"N 063°40'22.9"W	<i>DFO(6410643-09)</i>
Add	depth of 2 metres 3 decimetres (See Chart No. 1, I10) This notice affects Electronic Navigational Chart: CA279044	50°14'47.0"N 063°40'23.4"W	<i>DFO(6410643-10)</i>
Delete	depth of 5 metres 4 decimetres (See Chart No. 1, I10) This notice affects Electronic Navigational Chart: CA279044	50°13'35.0"N 063°33'29.1"W	<i>DFO(6410643-11)</i>
Add	depth of 5 metres 1 decimetre (See Chart No. 1, I10) This notice affects Electronic Navigational Chart: CA279044	50°13'35.1"N 063°33'29.3"W	<i>DFO(6410643-12)</i>
Delete	depth of 3 metres 7 decimetres (See Chart No. 1, I10) This notice affects Electronic Navigational Chart: CA279044	50°12'09.0"N 063°26'07.8"W	<i>DFO(6410643-13)</i>
Add	depth of 3 metres 2 decimetres (See Chart No. 1, I10) This notice affects Electronic Navigational Chart: CA279044	50°12'09.0"N 063°26'07.1"W	<i>DFO(6410643-14)</i>

4026 - Havre Saint-Pierre et/and Cap des Rosiers à/to Pointe des Monts - New Edition - 23-MAY-2014 - NAD 1983

12-AUG-2022

LNMD. 30-JUL-2021

Delete	depth of 6 metres 6 decimetres (See Chart No. 1, I10) This notice affects Electronic Navigational Chart: CA279044	50°16'37.0"N 063°58'12.9"W <i>DFO(6410643-01)</i>
Add	depth of 4 metres 9 decimetres (See Chart No. 1, I10) This notice affects Electronic Navigational Chart: CA279044	50°16'38.5"N 063°58'18.2"W <i>DFO(6410643-02)</i>
Delete	depth of 6 metres 8 decimetres (See Chart No. 1, I10) This notice affects Electronic Navigational Chart: CA279044	50°15'22.5"N 063°46'03.6"W <i>DFO(6410643-03)</i>
Add	depth of 6 metres 1 decimetre (See Chart No. 1, I10) This notice affects Electronic Navigational Chart: CA279044	50°15'23.1"N 063°46'01.9"W <i>DFO(6410643-04)</i>
Delete	depth of 3 metres 2 decimetres (See Chart No. 1, I10) This notice affects Electronic Navigational Chart: CA279044	50°13'50.4"N 063°49'55.3"W <i>DFO(6410643-05)</i>
Add	depth of 2 metres 6 decimetres (See Chart No. 1, I10) This notice affects Electronic Navigational Chart: CA279044	50°13'49.9"N 063°49'56.6"W <i>DFO(6410643-06)</i>
Delete	depth of 3 metres 5 decimetres (See Chart No. 1, I10) This notice affects Electronic Navigational Chart: CA279044	50°11'48.7"N 063°46'33.3"W <i>DFO(6410643-07)</i>
Add	depth of 1 metre 6 decimetres (See Chart No. 1, I10) This notice affects Electronic Navigational Chart: CA279044	50°11'34.0"N 063°46'42.0"W <i>DFO(6410643-08)</i>
Delete	depth of 3 metres 4 decimetres (See Chart No. 1, I10) This notice affects Electronic Navigational Chart: CA279044	50°14'44.8"N 063°40'22.9"W <i>DFO(6410643-09)</i>
Add	depth of 2 metres 3 decimetres (See Chart No. 1, I10) This notice affects Electronic Navigational Chart: CA279044	50°14'47.0"N 063°40'23.4"W <i>DFO(6410643-10)</i>
Delete	depth of 5 metres 4 decimetres (See Chart No. 1, I10) This notice affects Electronic Navigational Chart: CA279044	50°13'35.0"N 063°33'29.1"W <i>DFO(6410643-11)</i>
Add	depth of 5 metres 1 decimetre (See Chart No. 1, I10) This notice affects Electronic Navigational Chart: CA279044	50°13'35.1"N 063°33'29.3"W <i>DFO(6410643-12)</i>

Delete	depth of 3 metres 7 decimetres (See Chart No. 1, I10) This notice affects Electronic Navigational Chart: CA279044	50°12'09.0"N 063°26'07.8"W <i>DFO(6410643-13)</i>
Add	depth of 3 metres 2 decimetres (See Chart No. 1, I10) This notice affects Electronic Navigational Chart: CA279044	50°12'09.0"N 063°26'07.1"W <i>DFO(6410643-14)</i>
4047 - St. Pierre Bank / Banc de Saint-Pierre to / au Whale Bank / Banc de la Baleine - New Edition - 09-OCT-1998 - NAD 1983		
12-AUG-2022		LNM/D. 29-JUL-2022
Add	depth of 20.4 metres (See Chart No. 1, I10) This notice affects Electronic Navigational Chart: CA276091, CA376164	46°53'30.4"N 056°04'17.5"W <i>DFO(6310186-01)</i>
Delete	depth of 37 metres (See Chart No. 1, I10) This notice affects Electronic Navigational Chart: CA276091, CA376164	46°53'14.0"N 056°03'52.0"W <i>DFO(6310186-02)</i>
Add	depth of 27.4 metres (See Chart No. 1, I10) This notice affects Electronic Navigational Chart: CA276091, CA376164	46°53'06.0"N 056°03'19.1"W <i>DFO(6310186-03)</i>
Add	depth of 12.2 metres (See Chart No. 1, I10) This notice affects Electronic Navigational Chart: CA276091, CA376164	46°51'57.2"N 056°03'04.5"W <i>DFO(6310186-05)</i>
4201 - Halifax Harbour: Bedford Basin - New Edition - 25-AUG-2017 - NAD 1983		
26-AUG-2022		LNM/D. 31-DEC-2021
Add	depth of 19.1 metres (See Chart No. 1, I10) This notice affects Electronic Navigational Chart: CA576003	44°40'34.0"N 063°36'20.9"W <i>DFO(6310191-01)</i>
Delete	depth of 20.1 metres (See Chart No. 1, I10) This notice affects Electronic Navigational Chart: CA576003	44°40'34.0"N 063°36'24.9"W <i>DFO(6310191-02)</i>
Add	depth of 19.8 metres (See Chart No. 1, I10) This notice affects Electronic Navigational Chart: CA576003	44°40'33.8"N 063°36'24.7"W <i>DFO(6310191-03)</i>
Delete	depth of 19.8 metres (See Chart No. 1, I10) This notice affects Electronic Navigational Chart: CA576003	44°40'32.8"N 063°36'26.1"W <i>DFO(6310191-04)</i>

4202 - Halifax Harbour: Point Pleasant to / à Bedford Basin - New Edition - 26-FEB-2016 - NAD 1983		
26-AUG-2022		LNMD/D. 03-JUN-2022
Add	depth of 19.1 metres (See Chart No. 1, I10) This notice affects Electronic Navigational Chart: CA576003	44°40'34.0"N 063°36'20.9"W <i>DFO(6310191-01)</i>
Delete	depth of 20.1 metres (See Chart No. 1, I10) This notice affects Electronic Navigational Chart: CA576003	44°40'34.0"N 063°36'24.9"W <i>DFO(6310191-02)</i>
Add	depth of 19.8 metres (See Chart No. 1, I10) This notice affects Electronic Navigational Chart: CA576003	44°40'33.8"N 063°36'24.7"W <i>DFO(6310191-03)</i>
Delete	depth of 19.8 metres (See Chart No. 1, I10) This notice affects Electronic Navigational Chart: CA576003	44°40'32.8"N 063°36'26.1"W <i>DFO(6310191-04)</i>
4210 - Cape Sable to / à Pubnico Harbour - New Chart - 05-APR-1991 - NAD 1983		
26-AUG-2022		LNMD/D. 13-AUG-2021
Add	rock which covers and uncovers with legend Rep (2022) (See Chart No. 1, K11, I3) This notice affects Electronic Navigational Chart: CA376014, CA476043	43°31'12.9"N 065°45'16.8"W <i>DFO(6310227-01)</i>
4230 - Little Hope Island to / à Cape St Marys - New Chart - 15-JUN-1990 - NAD 1983		
26-AUG-2022		LNMD/D. 06-MAY-2022
Add	rock which covers and uncovers with legend Rep (2022) (See Chart No. 1, K11, I3) This notice affects Electronic Navigational Chart: CA376014, CA476043	43°31'12.9"N 065°45'16.8"W <i>DFO(6310227-01)</i>
4237 - Approaches to / Approches de Halifax Harbour - New Edition - 28-MAY-2021 - World Geodetic System 1984		
12-AUG-2022		LNMD/D. 15-JUL-2022
Add	obstruction, depth unknown PA with legend Rep (2022) (See Chart No. 1, K40) This notice affects Electronic Navigational Chart: CA276801, CA476009	44°19'46.8"N 063°21'15.0"W <i>DFO(6310190-01)</i>
4242 - Cape Sable Island to / aux Tusket Islands - New Edition - 28-AUG-1992 - NAD 1983		
26-AUG-2022		LNMD/D. 24-DEC-2021
Add	rock which covers and uncovers with legend Rep (2022) (See Chart No. 1, K11, I3) This notice affects Electronic Navigational Chart: CA376014, CA476043	43°31'12.9"N 065°45'16.8"W <i>DFO(6310227-01)</i>
4320 - Egg Island to / à West Ironbound Island - New Edition - 26-SEP-1997 - NAD 1983		
12-AUG-2022		LNMD/D. 25-FEB-2022
Add	obstruction, depth unknown PA with legend Rep (2022) (See Chart No. 1, K40) This notice affects Electronic Navigational Chart: CA276801, CA476009	44°19'46.8"N 063°21'15.0"W <i>DFO(6310190-01)</i>

26-AUG-2022		LNMD. 12-AUG-2022
Delete	legend BELL against red starboard hand lighted pillar buoy FIR, marked AT50 (See Chart No. 1, Qc) This notice affects Electronic Navigational Chart: CA476195	44°28'03.7"N 063°50'11.4"W (F2022010) LL(491) DFO(6310222-01)
 4386 - St. Margaret's Bay - New Edition - 16-JUL-2004 - NAD 1983		
26-AUG-2022		LNMD. 27-MAY-2022
Delete	legend BELL against red starboard hand lighted pillar buoy FIR, marked AT50 (See Chart No. 1, Qc) This notice affects Electronic Navigational Chart: CA476195	44°28'03.3"N 063°50'10.7"W (F2022010) LL(491) DFO(6310222-01)
 4403 - East Point to / à Cape Bear - New Edition - 04-APR-2003 - NAD 1983		
26-AUG-2022		LNMD. 12-NOV-2021
Reposition	black, yellow and black East Cardinal spar buoy, marked NJA (See Chart No. 1, Q130.3) This notice affects Electronic Navigational Chart: CA376248, CA476490	from 46°11'08.1"N 062°23'17.0"W to 46°11'09.2"N 062°23'08.2"W (G2022062) DFO(6310202-01)
 4456 - Baie Piashti à/to Petite Île au Marteau - New Edition - 30-AUG-2013 - NAD 1983		
12-AUG-2022		LNMD. 27-DEC-2019
Delete	depth of 0 metres 7 decimetres (See Chart No. 1, I10)	50°12'18.9"N 063°32'40.1"W DFO(6410643-15)
Add	depth of 0 metres 1 decimetre (See Chart No. 1, I10)	50°12'18.6"N 063°32'40.1"W DFO(6410643-16)
Delete	depth of 13 metres 8 decimetres (See Chart No. 1, I10)	50°13'14.8"N 063°30'11.8"W DFO(6410643-17)
Add	depth of 13 metres 4 decimetres (See Chart No. 1, I10)	50°13'14.3"N 063°30'16.5"W DFO(6410643-18)
Delete	depth of 1 metre 9 decimetres (See Chart No. 1, I10)	50°15'07.1"N 063°32'42.7"W DFO(6410643-19)
Add	depth of 1 metre 5 decimetres (See Chart No. 1, I10)	50°15'06.6"N 063°32'43.4"W DFO(6410643-20)
Add	depth of 5 metres 1 decimetre (See Chart No. 1, I10)	50°11'59.2"N 063°26'33.3"W DFO(6410643-21)
Delete	depth of 1 metre 3 decimetres (See Chart No. 1, I10)	50°12'28.6"N 063°29'26.4"W DFO(6410643-22)

Add	depth of 0 metres 9 decimetres (See Chart No. 1, I10)	50°12'28.4"N 063°29'26.0"W DFO(6410643-23)
Delete	depth of 5 metres 5 decimetres (See Chart No. 1, I10)	50°12'03.1"N 063°29'02.0"W DFO(6410643-24)
Add	depth of 5 metres 0 decimetres (See Chart No. 1, I10)	50°12'02.8"N 063°29'01.9"W DFO(6410643-25)
4466 - Hillsborough Bay - New Edition - 21-MAR-2003 - NAD 1983		
05-AUG-2022		LNMD. 01-JUL-2022
Delete	green port hand pillar buoy, marked CH13 (See Chart No. 1, Qg) This notice affects Electronic Navigational Chart: CA476179	46°11'29.2"N 063°13'12.7"W (G2022039) DFO(6310124-01)
Add	green port hand lighted pillar buoy Q G, marked CH13 (See Chart No. 1, Qg) This notice affects Electronic Navigational Chart: CA476179	46°11'29.2"N 063°13'12.7"W LL(1005.13) DFO(6310124-02)
Delete	red starboard hand spar buoy, marked CH16 (See Chart No. 1, Qf) This notice affects Electronic Navigational Chart: CA476179	46°11'19.2"N 063°13'37.7"W (G2022040) DFO(6310125-01)
Add	red starboard hand lighted spar buoy FI R, marked CH16 (See Chart No. 1, Qf) This notice affects Electronic Navigational Chart: CA476179	46°11'19.2"N 063°13'37.7"W LL(1005.16) DFO(6310125-02)
4486 - Baie des Chaleurs / Chaleur Bay - New Edition - 19-FEB-1999 - NAD 1983		
05-AUG-2022		LNMD. 11-FEB-2022
Amend	FI R 15ft to read LFI against light (See Chart No. 1, P16) This notice affects Electronic Navigational Chart: CA376187, CA476275	47°53'14.7"N 064°30'14.8"W (G2022047) LL(1262.8) DFO(6310143-01)
4625 - Burin Peninsula to / à Saint-Pierre - New Edition - 24-JAN-2003 - NAD 1983		
12-AUG-2022		LNMD. 29-JUL-2022
Add	depth of 11 fathoms (See Chart No. 1, I10) This notice affects Electronic Navigational Chart: CA276091, CA376164	46°53'30.4"N 056°04'17.5"W DFO(6310186-01)
Delete	depth of 20 fathoms (See Chart No. 1, I10) This notice affects Electronic Navigational Chart: CA276091, CA376164	46°53'14.0"N 056°03'58.5"W DFO(6310186-02)
Add	depth of 15 fathoms (See Chart No. 1, I10) This notice affects Electronic Navigational Chart: CA276091, CA376164	46°53'06.0"N 056°03'19.1"W DFO(6310186-03)

Add	depth of 6 fathoms, 4 feet (See Chart No. 1, I10) This notice affects Electronic Navigational Chart: CA276091, CA376164	46°51'57.2"N 056°03'04.5"W <i>DFO(6310186-05)</i>
Delete	depth of 10 fathoms, 3 feet (See Chart No. 1, I10) This notice affects Electronic Navigational Chart: CA376164	46°51'34.0"N 056°04'18.0"W <i>DFO(6310186-06)</i>
Add	depth of 8 fathoms (See Chart No. 1, I10) This notice affects Electronic Navigational Chart: CA376164	46°51'29.3"N 056°04'22.0"W <i>DFO(6310186-07)</i>
Replace	depth of 8 fathoms, 3 feet with depth of 5 fathoms, 4 feet (See Chart No. 1, I10) This notice affects Electronic Navigational Chart: CA376164	46°51'25.0"N 056°04'48.2"W <i>DFO(6310186-08)</i>
Add	depth of 7 fathoms, 1 foot (See Chart No. 1, I10) This notice affects Electronic Navigational Chart: CA376164	46°51'30.2"N 056°05'07.5"W <i>DFO(6310186-09)</i>
Replace	depth of 12 fathoms with depth of 10 fathoms (See Chart No. 1, I10) This notice affects Electronic Navigational Chart: CA376164	46°52'21.7"N 056°06'02.0"W <i>DFO(6310186-10)</i>
Delete	depth of 20 fathoms (See Chart No. 1, I10) This notice affects Electronic Navigational Chart: CA376164	46°52'33.5"N 056°06'08.0"W <i>DFO(6310186-11)</i>
Add	depth of 14 fathoms (See Chart No. 1, I10) This notice affects Electronic Navigational Chart: CA376164	46°52'35.0"N 056°06'07.8"W <i>DFO(6310186-12)</i>
Delete	depth of 17 fathoms (See Chart No. 1, I10) This notice affects Electronic Navigational Chart: CA376164	46°52'57.5"N 056°05'38.0"W <i>DFO(6310186-13)</i>
Add	depth of 8 fathoms (See Chart No. 1, I10) This notice affects Electronic Navigational Chart: CA376164	46°52'53.4"N 056°05'34.2"W <i>DFO(6310186-14)</i>
Add	depth of 15 fathoms (See Chart No. 1, I10) This notice affects Electronic Navigational Chart: CA376164	46°53'35.9"N 056°03'50.1"W <i>DFO(6310186-15)</i>
Add	depth of 14 fathoms (See Chart No. 1, I10) This notice affects Electronic Navigational Chart: CA376164	46°53'06.8"N 056°03'56.6"W <i>DFO(6310186-16)</i>

Add	depth of 15 fathoms (See Chart No. 1, I10) This notice affects Electronic Navigational Chart: CA376164	46°52'57.5"N 056°03'43.7"W <i>DFO(6310186-17)</i>
4626 - Saint-Pierre and / et Miquelon (France) - New Edition - 24-JAN-2003 - NAD 1983		
12-AUG-2022		LNMD. 29-JUL-2022
Add	depth of 11 fathoms (See Chart No. 1, I10) This notice affects Electronic Navigational Chart: CA276091, CA376164	46°53'30.4"N 056°04'17.5"W <i>DFO(6310186-01)</i>
Delete	depth of 20 fathoms (See Chart No. 1, I10) This notice affects Electronic Navigational Chart: CA276091, CA376164	46°53'13.0"N 056°03'56.3"W <i>DFO(6310186-02)</i>
Add	depth of 15 fathoms (See Chart No. 1, I10) This notice affects Electronic Navigational Chart: CA276091, CA376164	46°53'06.0"N 056°03'19.1"W <i>DFO(6310186-03)</i>
Add	depth of 6 fathoms, 4 feet (See Chart No. 1, I10) This notice affects Electronic Navigational Chart: CA276091, CA376164	46°51'57.2"N 056°03'04.5"W <i>DFO(6310186-05)</i>
Delete	depth of 10 fathoms, 3 feet (See Chart No. 1, I10) This notice affects Electronic Navigational Chart: CA376164	46°51'32.5"N 056°04'16.0"W <i>DFO(6310186-06)</i>
Add	depth of 8 fathoms (See Chart No. 1, I10) This notice affects Electronic Navigational Chart: CA376164	46°51'29.3"N 056°04'22.0"W <i>DFO(6310186-07)</i>
Replace	depth of 8 fathoms, 3 feet with depth of 5 fathoms, 4 feet (See Chart No. 1, I10) This notice affects Electronic Navigational Chart: CA376164	46°51'25.0"N 056°04'48.2"W <i>DFO(6310186-08)</i>
Add	depth of 7 fathoms, 1 foot (See Chart No. 1, I10) This notice affects Electronic Navigational Chart: CA376164	46°51'30.2"N 056°05'07.5"W <i>DFO(6310186-09)</i>
Replace	depth of 12 fathoms with depth of 10 fathoms (See Chart No. 1, I10) This notice affects Electronic Navigational Chart: CA376164	46°52'21.7"N 056°06'02.0"W <i>DFO(6310186-10)</i>
Delete	depth of 20 fathoms (See Chart No. 1, I10) This notice affects Electronic Navigational Chart: CA376164	46°52'32.0"N 056°06'08.0"W <i>DFO(6310186-11)</i>
Add	depth of 14 fathoms (See Chart No. 1, I10) This notice affects Electronic Navigational Chart: CA376164	46°52'35.0"N 056°06'07.8"W <i>DFO(6310186-12)</i>

Delete	depth of 17 fathoms (See Chart No. 1, I10) This notice affects Electronic Navigational Chart: CA376164	46°52'56.0"N 056°05'37.0"W <i>DFO(6310186-13)</i>
Add	depth of 8 fathoms (See Chart No. 1, I10) This notice affects Electronic Navigational Chart: CA376164	46°52'53.4"N 056°05'34.2"W <i>DFO(6310186-14)</i>
Add	depth of 15 fathoms (See Chart No. 1, I10) This notice affects Electronic Navigational Chart: CA376164	46°53'35.9"N 056°03'50.1"W <i>DFO(6310186-15)</i>
Add	depth of 14 fathoms (See Chart No. 1, I10) This notice affects Electronic Navigational Chart: CA376164	46°53'06.8"N 056°03'56.6"W <i>DFO(6310186-16)</i>
Add	depth of 15 fathoms (See Chart No. 1, I10) This notice affects Electronic Navigational Chart: CA376164	46°52'57.5"N 056°03'43.7"W <i>DFO(6310186-17)</i>
4652 - Corner Brook - New Edition - 29-MAY-2015 - NAD 1983 26-AUG-2022		LNMD. 08-NOV-2019
Add	black, yellow and black East cardinal lighted spar buoy Q(3) 10s, marked XCB (See Chart No. 1, Q130.3) This notice affects Electronic Navigational Chart: CA576592	48°57'30.7"N 057°57'02.6"W <i>(N2022124) LL(194.8) DFO(6310194-01)</i>
4665 - St. Margaret Bay and Approaches / et les approches - New Edition - 04-JUL-2003 - NAD 1983 26-AUG-2022		LNMD. 31-DEC-2010
Add	light FI G (See Chart No. 1, P1)	51°01'26.7"N 057°01'31.0"W <i>(N2022097) LL(217.12) DFO(6310161-01)</i>
4669 - Red Bay - New Edition - 06-DEC-2002 - NAD 1983 26-AUG-2022		LNMD. 01-SEP-2017
Add	green port hand lighted pillar buoy FI G, marked NR7 (See Chart No. 1, Qg)	51°43'49.0"N 056°25'57.4"W <i>(N2022128) LL(229.65) DFO(6310199-01)</i>
Add	red starboard hand lighted pillar buoy FI R, marked NR8 (See Chart No. 1, Qf)	51°44'03.8"N 056°25'55.2"W <i>(N2022129) LL(229.7) DFO(6310201-01)</i>
4701 - Ship Harbour Head to / aux Camp Islands - New Edition - 13-DEC-2002 - NAD 1983 05-AUG-2022		LNMD. 03-DEC-2021
Amend	FI 6s 129ft 6M to read FI 4s129ft4M against light (See Chart No. 1, P16)	52°33'51.8"N 055°42'09.0"W <i>(N2022099) LL(270.1) DFO(6310163-01)</i>

Delete	fog signal Fog Sig 60 s against light (See Chart No. 1, R1, R20) This notice affects Electronic Navigational Chart: CA476360	52°10'02.1"N 055°38'26.6"W (N2022122) LL(279) DFO(6310182-01)
4701 - St Francis Harbor - New Edition - 13-DEC-2002 - NAD 1983		
05-AUG-2022		LNm/D. 03-DEC-2021
Amend	Fl 6s 129ft 6M to read Fl 4s129ft4M against light (See Chart No. 1, P16) This notice affects Electronic Navigational Chart: CA476360	52°33'51.2"N 055°42'10.1"W (N2022099) LL(270.1) DFO(6310163-01)
4702 - Corbett Island to / à Ship Harbour Head - New Edition - 28-MAY-2004 - NAD 1983		
19-AUG-2022		LNm/D. 26-MAR-2021
Amend	Fl 3s28m6M to read Fl 4s28m4M against light (See Chart No. 1, P16) This notice affects Electronic Navigational Chart: CA276113, CA476630	53°00'37.6"N 055°45'36.7"W (N2022119) LL(280) DFO(6310180-01)
4703 - White Point to / à Corbet Island - New Edition - 04-APR-2003 - NAD 1983		
19-AUG-2022		LNm/D. 15-JAN-2016
Amend	Fl 6s127ft to read Fl 4s127ft against light (See Chart No. 1, P16) This notice affects Electronic Navigational Chart: CA276113, CA376596	53°27'42.6"N 055°44'32.6"W (N2022116) LL(281) DFO(6310177-01)
4730 - Nain to / à Domino Point - New Edition - 31-MAY-2002 - Unknown		
19-AUG-2022		LNm/D. 09-OCT-2020
Amend	Fl 6s106ft to read Fl 4s103ft7M against light (See Chart No. 1, P16) This notice affects Electronic Navigational Chart: CA276113, CA376363	54°27'29.1"N 056°52'49.4"W (N2022107) LL(286) DFO(6310168-01)
Amend	Fl 6s238ft to read Fl 4s238ft against light (See Chart No. 1, P16) This notice affects Electronic Navigational Chart: CA276113, CA376596	53°47'18.8"N 056°28'38.0"W (N2022115) LL(284) DFO(6310176-01)
Amend	Fl 6s127ft to read Fl 4s127ft against light (See Chart No. 1, P16) This notice affects Electronic Navigational Chart: CA276113, CA376596	53°28'15.5"N 055°45'01.6"W (N2022116) LL(281) DFO(6310177-01)
4731 - Forteau Bay to / à Domino Run - New Edition - 13-JUN-2003 - Unknown		
05-AUG-2022		LNm/D. 09-JUL-2021
Delete	fog signal Fog Sig 60 s against light (See Chart No. 1, R1, R20) This notice affects Electronic Navigational Chart: CA476360	52°10'01.7"N 055°38'34.5"W (N2022122) LL(279) DFO(6310182-01)
19-AUG-2022		LNm/D. 05-AUG-2022
Amend	Fl R 3s67ft to read Fl R 4s67ft against light (See Chart No. 1, P16) This notice affects Electronic Navigational Chart: CA276113	52°30'46.3"N 055°45'57.6"W (N2022100) LL(270.5) DFO(6310164-01)

Amend FI 6s127ft to read FI 4s127ft against light 53°27'40.0"N 055°44'50.1"W
(See Chart No. 1, P16)
This notice affects Electronic Navigational Chart: CA276113, CA376596
(N2022116) LL(281) DFO(6310177-01)

Amend FI 3s 95ft to read FI 4s92ft against light 53°00'36.3"N 055°45'50.2"W
(See Chart No. 1, P16)
This notice affects Electronic Navigational Chart: CA276113, CA476630
(N2022119) LL(280) DFO(6310180-01)

4732 - Approaches to / Approches à Hamilton Inlet - New Edition - 06-JUN-2003 - NAD 1983

19-AUG-2022

LNMD. 25-JUN-2021

Amend FI6s106ft to read FI 4s103ft7M against light 54°27'24.0"N 056°53'02.2"W
(See Chart No. 1, P16)
This notice affects Electronic Navigational Chart: CA276113, CA376363
(N2022107) LL(286) DFO(6310168-01)

Amend FI 6s238ft to read FI 4s238ft against light 53°47'08.8"N 056°28'40.3"W
(See Chart No. 1, P16)
This notice affects Electronic Navigational Chart: CA276113, CA376596
(N2022115) LL(284) DFO(6310176-01)

Amend FI 6sec127ft to read FI 4s127ft against light 53°27'42.4"N 055°44'33.8"W
(See Chart No. 1, P16)
This notice affects Electronic Navigational Chart: CA276113, CA376596
(N2022116) LL(281) DFO(6310177-01)

4744 - Approaches to / approches à Spotted Island Harbour - New Edition - 20-DEC-2002 - NAD 1983

19-AUG-2022

LNMD. 15-JAN-2016

Amend FI 6s127ft to read FI 4s127ft against light 53°27'42.5"N 055°44'32.5"W
(See Chart No. 1, P16)
This notice affects Electronic Navigational Chart: CA276113, CA376596
(N2022116) LL(281) DFO(6310177-01)

4745 - White Point to / à Sandy Island - New Edition - 07-MAR-2003 - NAD 1983

19-AUG-2022

LNMD. 15-JAN-2016

Amend FI 6s127ft to read FI 4s127ft against light 53°27'42.8"N 055°44'30.6"W
(See Chart No. 1, P16)
This notice affects Electronic Navigational Chart: CA276113, CA376596
(N2022116) LL(281) DFO(6310177-01)

4820 - Cape Freels to / à Exploits Islands - New Chart - 01-JUL-2005 - NAD 1983

12-AUG-2022

LNMD. 11-FEB-2022

Add black and yellow North cardinal pillar buoy Q, marked DDR 49°46'53.8"N 054°06'35.0"W
(See Chart No. 1, Q130.3)
This notice affects Electronic Navigational Chart: CA376655, CA476719
(N2022085) LL(383.3) DFO(6310136-01)

4861 - Fogo Island Northern Portion - New Chart - 26-APR-2019 - NAD 1983

12-AUG-2022

LNMD. 08-JUL-2022

Add green port hand lighted spar buoy Q G, marked DJ1/3 49°44'06.8"N 054°10'19.0"W
(See Chart No. 1, Qg)
This notice affects Electronic Navigational Chart: CA476719, CA576722
(N2022082) LL(383.78) DFO(6310131-01)

Add	black and yellow North cardinal pillar buoy Q, marked DDR (See Chart No. 1, Q130.3) This notice affects Electronic Navigational Chart: CA376655, CA476719	49°46'53.8"N 054°06'35.0"W (N2022085) LL(383.3) DFO(6310136-01)
4861 - Joe Batt's Arm - New Chart - 26-APR-2019 - NAD 1983		
12-AUG-2022		LN/D. 08-JUL-2022
Add	green port hand lighted spar buoy Q G, marked DJ1/3 (See Chart No. 1, Qg) This notice affects Electronic Navigational Chart: CA476719, CA576722	49°44'06.8"N 054°10'19.0"W (N2022082) LL(383.78) DFO(6310131-01)
4863 - Bacalhao Island to / à Black Island - New Edition - 30-NOV-2001 - NAD 1983		
12-AUG-2022		LN/D. 18-MAR-2022
Add	black and yellow North cardinal lighted spar buoy Q, marked DDN (See Chart No. 1, Q130.3) This notice affects Electronic Navigational Chart: CA476639	49°31'10.3"N 054°58'24.1"W (N2022081) LL(361.095) DFO(6310130-01)
4864 - Black Island to / à Little Denier Island - New Chart - 25-AUG-2006 - NAD 1983		
12-AUG-2022		LN/D. 17-NOV-2017
Add	black and yellow North cardinal lighted spar buoy Q, marked DDN (See Chart No. 1, Q130.3) This notice affects Electronic Navigational Chart: CA476639	49°31'10.3"N 054°58'24.1"W (N2022081) LL(361.095) DFO(6310130-01)
4885 - Port Harmon - New Edition - 08-MAR-2002 - NAD 1983		
26-AUG-2022		LN/D. 08-APR-2022
Amend	FI G to read Q G against green port hand lighted spar buoy, marked XS5 (See Chart No. 1, Qg) This notice affects Electronic Navigational Chart: CA576826	48°30'49.0"N 058°32'13.0"W (N2022125) LL(180.52) DFO(6310195-01)
4913 - Caraquet Harbour, Baie de Shippegan and / et Miscou Harbour - New Chart - 07-AUG-1992 - NAD 1983		
05-AUG-2022		LN/D. 03-JUN-2022
Amend	FIR to read LFI against light (See Chart No. 1, P16) This notice affects Electronic Navigational Chart: CA376187, CA476275	47°53'11.9"N 064°30'14.6"W (G2022047) LL(1262.8) DFO(6310143-01)
Amend	Iso R to read FI R against light (See Chart No. 1, P16) This notice affects Electronic Navigational Chart: CA476275	47°52'43.7"N 064°30'26.1"W (G2022048) LL(1262.9) DFO(6310144-01)
Amend	IsoR to read FI R against light (See Chart No. 1, P16) This notice affects Electronic Navigational Chart: CA476275	47°53'40.1"N 064°34'37.5"W (G2022049) LL(1274.2) DFO(6310147-01)
4921 - Quai / Wharf Chandler - New Edition - 02-DEC-2016 - NAD 1983		
26-AUG-2022		LN/D. 29-OCT-2021
Delete	depth of 1 metre 2 decimetres (See Chart No. 1, I10) This notice affects Electronic Navigational Chart: CA579071	48°20'34.5"N 064°39'23.3"W DFO(6410572-01)

Add	depth of 0 metres 7 decimetres (See Chart No. 1, I10) This notice affects Electronic Navigational Chart: CA579071	48°20'34.8"N 064°39'23.3"W <i>DFO(6410572-02)</i>
Add	depth of 1 metre 3 decimetres (See Chart No. 1, I10) This notice affects Electronic Navigational Chart: CA579071	48°20'42.2"N 064°39'33.5"W <i>DFO(6410572-03)</i>
Add	depth of 4 metres 6 decimetres (See Chart No. 1, I10) This notice affects Electronic Navigational Chart: CA579071	48°20'40.1"N 064°39'15.0"W <i>DFO(6410572-04)</i>
Add	depth of 5 metres (See Chart No. 1, I10) This notice affects Electronic Navigational Chart: CA579071	48°20'40.5"N 064°39'13.8"W <i>DFO(6410572-05)</i>
Delete	depth of 5 metres 4 decimetres (See Chart No. 1, I10) This notice affects Electronic Navigational Chart: CA579071	48°20'40.3"N 064°39'12.1"W <i>DFO(6410572-06)</i>
Add	depth of 5 metres 1 decimetre (See Chart No. 1, I10) This notice affects Electronic Navigational Chart: CA579071	48°20'40.5"N 064°39'12.2"W <i>DFO(6410572-07)</i>
Delete	depth of 8 metres 1 decimetre (See Chart No. 1, I10) This notice affects Electronic Navigational Chart: CA579071	48°20'29.0"N 064°39'29.1"W <i>DFO(6410572-08)</i>
Add	depth of 7 metres 8 decimetres (See Chart No. 1, I10) This notice affects Electronic Navigational Chart: CA579071	48°20'28.9"N 064°39'29.3"W <i>DFO(6410572-09)</i>
Delete	depth of 0 metres 8 decimetres (See Chart No. 1, I10) This notice affects Electronic Navigational Chart: CA579071	48°20'43.7"N 064°39'31.6"W <i>DFO(6410572-10)</i>
Add	depth of 0 metres 5 decimetres (See Chart No. 1, I10) This notice affects Electronic Navigational Chart: CA579071	48°20'43.6"N 064°39'31.7"W <i>DFO(6410572-11)</i>
Delete	depth of 0 metres 6 decimetres (See Chart No. 1, I10) This notice affects Electronic Navigational Chart: CA579071	48°20'43.4"N 064°39'37.3"W <i>DFO(6410572-12)</i>
Add	depth of 0 metres 3 decimetres (See Chart No. 1, I10) This notice affects Electronic Navigational Chart: CA579071	48°20'43.2"N 064°39'37.1"W <i>DFO(6410572-13)</i>

4935 - Murray Harbour to/à Boughton Bay - New Chart - 18-JAN-2019 - NAD 1983

26-AUG-2022

LNMD. 17-DEC-2021

Reposition black, yellow and black East Cardinal spar buoy, marked NJA from 46°11'08.1"N 062°23'17.0"W
(See Chart No. 1, Q130.3) to 46°11'09.2"N 062°23'08.2"W
This notice affects Electronic Navigational Chart: CA376248, CA476490
(G2022062) DFO(6310202-01)

Reposition green port hand lighted spar buoy FI G, marked NH3 from 46°09'31.1"N 062°29'34.5"W
(See Chart No. 1, Qg) to 46°09'30.2"N 062°29'41.4"W
This notice affects Electronic Navigational Chart: CA376248, CA476490
(G2022063) LL(953.5) DFO(6310203-01)

Reposition green port hand lighted spar buoy Q G, marked NH9 from 46°09'45.3"N 062°31'00.7"W
(See Chart No. 1, Qg) to 46°09'45.7"N 062°31'10.2"W
This notice affects Electronic Navigational Chart: CA476490
(G2022064) LL(953.7) DFO(6310204-01)

5030 - Green Bay to / à Double Island - New Edition - 16-JUL-2004 - NAD 1983

05-AUG-2022

LNMD. 03-DEC-2021

Delete fog signal FogSig against light 52°10'00.8"N 055°38'27.8"W
(See Chart No. 1, R1, R20)
This notice affects Electronic Navigational Chart: CA476360
(N2022122) LL(279) DFO(6310182-01)

5030 - Niger Sound - New Edition - 16-JUL-2004 - NAD 1983

05-AUG-2022

LNMD. 03-DEC-2021

Delete fog signal FogSig against light 52°10'00.4"N 055°38'28.5"W
(See Chart No. 1, R1, R20)
This notice affects Electronic Navigational Chart: CA476360
(N2022122) LL(279) DFO(6310182-01)

5032 - Approaches to / Approches à White Bear Arm - New Chart - 31-JAN-2003 - NAD 1983

05-AUG-2022

LNMD. 18-FEB-2022

Add light FI R 52°46'25.6"N 056°07'16.5"W
(See Chart No. 1, P1)
This notice affects Electronic Navigational Chart: CA476634, CA576847
(N2022096) LL(279.66) DFO(6310160-01)

5033 - Hawke Bay and / et Squasho Run - New Chart - 09-MAY-2003 - NAD 1983

19-AUG-2022

LNMD. 07-NOV-2014

Amend FI 3s28m6M to read FI 4s28m4M against light 53°00'37.6"N 055°45'36.8"W
(See Chart No. 1, P16)
This notice affects Electronic Navigational Chart: CA276113, CA476630
(N2022119) LL(280) DFO(6310180-01)

5042 - Cut Throat Island to / à Quaker Hat - New Edition - 27-JUN-2003 - NAD 1983

19-AUG-2022

LNMD. 25-AUG-2006

Amend FI 6s32m to read FI 4s31m7M against light 54°27'22.5"N 056°52'51.9"W
(See Chart No. 1, P16)
This notice affects Electronic Navigational Chart: CA276113, CA376363
(N2022107) LL(286) DFO(6310168-01)

5133 - Domino Point to / à Cape North - New Edition - 27-JUN-2003 - NAD 1983

19-AUG-2022

LNMD. 15-JAN-2016

Amend FI 6s238ft to read FI 4s238ft against light 53°47'10.8"N 056°28'39.4"W
(See Chart No. 1, P16)
This notice affects Electronic Navigational Chart: CA276113, CA376596
(N2022115) LL(284) DFO(6310176-01)

Amend FI 6s127ft to read FI 4s127ft against light 53°27'44.0"N 055°44'31.9"W
(See Chart No. 1, P16)
This notice affects Electronic Navigational Chart: CA276113, CA376596
(N2022116) LL(281) DFO(6310177-01)

5134 - Approaches to / Approches à Cartwright: Black Island to / à Tumbledown Dick Island - New Edition - 13-SEP-2002 - NAD 1983

19-AUG-2022

LNMD. 30-OCT-2020

Amend FI 3s106ft to read FI 4s106ft against light 53°51'31.1"N 056°59'25.5"W
(See Chart No. 1, P16)
This notice affects Electronic Navigational Chart: CA376355
(N2022114) LL(285) DFO(6310175-01)

Amend FI 6s238ft to read FI 4s238ft against light 53°47'11.1"N 056°28'37.2"W
(See Chart No. 1, P16)
This notice affects Electronic Navigational Chart: CA276113, CA376596
(N2022115) LL(284) DFO(6310176-01)

5135 - Approaches to / Approches à Hamilton Inlet - New Edition - 12-JUL-2002 - NAD 1983

19-AUG-2022

LNMD. 20-NOV-2020

Amend FI 6s106ft to read FI 4s103ft7M against light 54°27'22.2"N 056°52'51.2"W
(See Chart No. 1, P16)
This notice affects Electronic Navigational Chart: CA276113, CA376363
(N2022107) LL(286) DFO(6310168-01)

5138 - Cartwright Harbour - New Edition - 17-APR-1998 - NAD 1983

19-AUG-2022

LNMD. 18-MAR-2022

Add light FI G 53°42'07.4"N 057°01'40.7"W
(See Chart No. 1, P1)
This notice affects Electronic Navigational Chart: CA576498
(N2022095) LL(284.51) DFO(6310159-01)

Amend FI R to read FI Y against light 53°42'11.0"N 057°01'16.5"W
(See Chart No. 1, P16)
This notice affects Electronic Navigational Chart: CA576498
(N2022098) LL(284.72) DFO(6310162-01)

5163 - Cul de Sac - New Chart - 30-MAR-2018 - NAD 1983

12-AUG-2022

LNMD. 21-MAY-2021

Amend FI 6s to read FI against light 54°04'12.2"N 058°33'36.6"W
(See Chart No. 1, P16)
This notice affects Electronic Navigational Chart: CA476735
(N2022105) LL(293) DFO(6310166-01)

5163 - Rigolet - New Chart - 30-MAR-2018 - NAD 1983

12-AUG-2022

LN/M/D. 21-MAY-2021

Amend FI R to read FI Y against light 54°10'53.0"N 058°25'34.5"W
(See Chart No. 1, P16)
This notice affects Electronic Navigational Chart: CA476735, CA576737
(N2022110) LL(290.5) DFO(6310171-01)

Amend FI 6s to read FI against light 54°10'39.6"N 058°25'35.9"W
(See Chart No. 1, P16)
This notice affects Electronic Navigational Chart: CA476735, CA576737
(N2022111) LL(291) DFO(6310172-01)

5163 - Ticolorak Head to/à Green Island - New Chart - 30-MAR-2018 - NAD 1983

12-AUG-2022

LN/M/D. 21-MAY-2021

Amend FI 6s to read FI against light 53°55'37.3"N 058°59'36.6"W
(See Chart No. 1, P16)
This notice affects Electronic Navigational Chart: CA476735
(N2022104) LL(296) DFO(6310165-01)

Amend FI 6s to read FI against light 54°04'12.2"N 058°33'36.6"W
(See Chart No. 1, P16)
This notice affects Electronic Navigational Chart: CA476735
(N2022105) LL(293) DFO(6310166-01)

Amend FI R to read FI Y against light 54°10'53.0"N 058°25'34.5"W
(See Chart No. 1, P16)
This notice affects Electronic Navigational Chart: CA476735, CA576737
(N2022110) LL(290.5) DFO(6310171-01)

Amend FI 6s to read FI against light 54°10'39.6"N 058°25'35.9"W
(See Chart No. 1, P16)
This notice affects Electronic Navigational Chart: CA476735, CA576737
(N2022111) LL(291) DFO(6310172-01)

5179 - Alexis Bay - New Edition - 10-OCT-2003 - NAD 1983

05-AUG-2022

LN/M/D. 22-OCT-2021

Amend FI 6s 129ft 6M to read FI 4s129ft4M against light 52°33'51.3"N 055°42'09.8"W
(See Chart No. 1, P16)
(N2022099) LL(270.1) DFO(6310163-01)

5179 - Alexis River - New Edition - 10-OCT-2003 - NAD 1983

05-AUG-2022

LN/M/D. 22-OCT-2021

Add light FI G 52°32'15.4"N 056°16'46.3"W
(See Chart No. 1, P1)
(N2022094) LL(276.1) DFO(6310158-01)

8007 - Halifax to / à Sable Island / Île de Sable, Including / y compris Emerald Bank / Banc d'Émeraude and / et Sable Island Bank / Banc de l'Île de Sable - New Edition - 30-AUG-2002 - NAD 1983

12-AUG-2022

LN/M/D. 24-DEC-2021

Add obstruction, depth unknown PA with legend Rep (2022) 44°19'46.8"N 063°21'15.0"W
(See Chart No. 1, K40)
This notice affects Electronic Navigational Chart: CA276801, CA476009
DFO(6310190-01)

8048 - Cape Harrison to / à St. Michael Bay - New Edition - 20-JUN-2003 - NAD 1983

19-AUG-2022

LNMD. 25-JUN-2021

- Amend FI R 3s20m to read FI R 4s20m against light 52°30'42.1"N 055°45'50.4"W
(See Chart No. 1, P16)
This notice affects Electronic Navigational Chart: CA276113
(N2022100) LL(270.5) DFO(6310164-01)
- Amend FI 6s32m to read FI 4s31m7M against light 54°27'21.4"N 056°53'02.2"W
(See Chart No. 1, P16)
This notice affects Electronic Navigational Chart: CA276113, CA376363
(N2022107) LL(286) DFO(6310168-01)
- Amend FI 6s72m to read FI 4s72m against light 53°47'05.4"N 056°28'50.9"W
(See Chart No. 1, P16)
This notice affects Electronic Navigational Chart: CA276113, CA376596
(N2022115) LL(284) DFO(6310176-01)
- Amend FI 6s39m to read FI 4s39m against light 53°27'40.7"N 055°44'30.8"W
(See Chart No. 1, P16)
This notice affects Electronic Navigational Chart: CA276113, CA376596
(N2022116) LL(281) DFO(6310177-01)
- Amend FI 3s 29m to read FI 4s28m against light 53°00'38.7"N 055°45'33.6"W
(See Chart No. 1, P16)
This notice affects Electronic Navigational Chart: CA276113, CA476630
(N2022119) LL(280) DFO(6310180-01)
- Add subsurface Ocean Data Acquisition System ODAS/SADO with known depth of 830 metres 52°41'38.8"N 051°33'35.3"W
(See Chart No. 1, L25)
This notice affects Electronic Navigational Chart: CA276113
DFO(6310189-01)

8049 - St. Michael Bay to/aux Gray Islands - New Edition - 07-MAR-2003 - Unknown

05-AUG-2022

LNMD. 29-APR-2022

- Delete fog signal Fog Sig 88 against light 52°10'01.7"N 055°38'34.5"W
(See Chart No. 1, R1, R20)
This notice affects Electronic Navigational Chart: CA476360
(N2022122) LL(279) DFO(6310182-01)
- 19-AUG-2022 LNMD. 05-AUG-2022
- Add subsurface Ocean Data Acquisition System ODAS/SADO with known depth of 830 metres 52°41'38.8"N 051°33'35.3"W
(See Chart No. 1, L25)
This notice affects Electronic Navigational Chart: CA276113
DFO(6310189-01)

Section 3: Radio Aids to Marine Navigation Corrections

No corrections for this section.

Section 4: Canadian Sailing Directions Corrections

The following **Canadian Sailing Directions** volumes have recently been updated on the [Canadian Hydrographic Service website](#).

No.	Title
Atlantic Coast	
ATL108	Gulf of St. Lawrence (Southwest Portion)
Pacific Coast	
PAC200	General Information, Pacific Coast
PAC201	Juan de Fuca Strait and Strait of Georgia
PAC202	Discovery Passage to Queen Charlotte Strait and West Coast of Vancouver Island
PAC205	Inner Passage – Queen Charlotte Sound to Chatham Sound
PAC206	Hecate Strait, Dixon Entrance, Portland Inlet and Adjacent Waters and Haida Gwaii

Each volume includes a section entitled “Record of Changes” which lists all updates that are incorporated during the current calendar year.

Section 5: List of Lights, Buoys and Fog Signals Corrections

The amendments are highlighted and deletions are crossed out. For general and region-specific information on the List of Lights, click on the following links: [Newfoundland and Labrador Coast](#), [Atlantic Coast](#), [Inland Waters](#) and [Pacific Coast](#).

No.	Name	Position ----- Latitude N. Longitude W.	Light Characteristics	Focal Height in m. above water	Nomi- nal Range	Description ----- Height in meters above ground	Remarks ----- Fog Signals
-----	------	--	--------------------------	--	-----------------------	--	---------------------------------

NEWFOUNDLAND AND LABRADOR COAST

SOUTHWEST COAST (LL 121 – 172)

132.51 H0279.5	Conne River Wharf Light	47 51 44.2 055 46 20.2	Fl R 5s	3.2	5	Pipe tower. 2.6	Flash 1 s; eclipse 4 s. Operates 24 h. Year round. Chart:4644 Edn 08/22 (N22-134)
159.5 H0230	Margaree Point Light	Margaree. 47 34 13.0 059 04 01.4	Fl W 4s	6.4	6	Square skeleton tower, red and white rectangular daymark. 4.3	Flash 1 s; eclipse 3 s. Year round. Chart:4641 Edn 08/22 (N22-136)
160.1	Motherlake Bay West light buoy QK2	W. of Port aux Basques. 47 33 42.9 059 08 36.9	Fl R 4s	Red spar, marked "QK2".	Seasonal. Chart:4641 Edn 08/22 (N22-086)
160.2	Channel Gut Five Foot Rock light buoy QG1	47 33 51.6 059 08 15.0	Fl G 4s	Green spar, marked "QG1".	Seasonal. Chart:4641 Edn 08/22 (N22-087)
160.3	4 Foot Shoal light buoy QK4	Motherlake Bay. 47 33 50.0 059 08 36.8	Fl R 4s	Red spar, marked "QK4".	Seasonal. Chart:4641 Edn 08/22 (N22-088)

WEST COAST (LL 173 – 208.2)

180.52	Port Harmon Inner light buoy XS5	48 30 49.0 058 32 13.0	Q G 1s	Green spar, marked "XS5".	Year round. Chart:4885 Edn 08/22 (N22-125)
194.8	Corner Brook East Cardinal light buoy XCB	48 57 30.7 057 57 02.6	Q(3) W 10s	Black, yellow and black spar, marked "XCB".	Operates 24 h. Year round. Chart:4652 Edn 08/22 (N22-124)

STRAIT OF BELLE ISLE (LL 211 – 234)

217.12	Shoal Cove West Breakwater Light	51 01 26.8 057 01 33.7	Fl G 4s	2	Pipe tower.	Flash 1 s; eclipse 3 s. Operates 24 h. Seasonal. Chart:4665 Edn 08/22 (N22-097)
229.65	Penney Island light buoy NR7	51 43 49.0 056 25 57.4	Fl G 4s	Green, marked "NR7".	Operates 24 h. Seasonal. Chart:4669 Edn 08/22 (N22-128)

Notices to Mariners – Monthly Eastern Edition
Section 5: List of Lights, Buoys and Fog Signals Corrections

No.	Name	Position ----- Latitude N. Longitude W.	Light Characteristics	Focal Height in m. above water	Nomi- nal Range	Description ----- Height in meters above ground	Remarks ----- Fog Signals	
229.7	The Basin light buoy NR8	51 44 03.8 056 25 55.2	Fl R 4s	Red, marked "NR8".	Operates 24 h. Seasonal. Chart:4669 Edn 08/22 (N22-129)	
NEWFOUNDLAND AND LABRADOR COAST (LL 269.99 – 325.23)								
270.1 H0086.8	Cape St. Francis Light	E. of Granby Island. 52 33 51.0 055 42 13.8	Fl W 4s	39.4	4	Rectangular skeleton tower, red and white rectangular daymark. 2.9	Flash 1 s; eclipse 3 s. Seasonal. Chart:5179 Edn 08/22 (N22-099)	
270.5 H0087	Bobbs Island Light	Alexis Bay. 52 30 47.0 055 45 54.0	Fl R 4s	19.8	4	Square skeleton tower, red and white rectangular daymark. 4.3	Flash 1 s; eclipse 3 s. Seasonal. Chart:5179 Edn 08/22 (N22-100)	
276.1	Port Hope Simpson Wharf Light	52 32 14.6 056 16 47.1	Fl G 4s	2	Pipe tower.	Flash 1 s; eclipse 3 s. Operates 24 h. Seasonal. Chart:5031 Edn 08/22 (N22-094)	
276.81 H0089.7	Cape St. Lewis Light	Entrance to St. Lewis Sound. 52 22 04.8 055 37 48.0	Fl W 4s	40.7	4	Square skeleton tower, red and white rectangular daymark, white horizontal band. 4.7	Flash 1 s; eclipse 3 s. Seasonal. Chart:5031 Edn 08/22 (N22-101)	
276.85 H0091	Killick Island Light	Entrance to Battle Harbour. 52 16 40.0 055 35 33.0	Fl G 4s	6.3	2	Square skeleton tower, green and white rectangular daymark. 4.5	Flash 1 s; eclipse 3 s. Seasonal. Chart:5031 Edn 08/22 (N22-121)	
279 H0094	Camp Islands Light Station	Strait of Belle Isle, Labrador side. 52 10 00.7 055 38 24.8	Fl W 5s	41.3	15	White octagonal tower with red upper portion. 9.9	Flash 0.2 s; eclipse 4.8 s. Seasonal. Horn – Blast 4 s; sil. 56 s. Horn points 103°.	Chart:5030 Edn 08/22 (N22-122)
279.3 H0086.7	Twin Islands Light	N. of Ship Harbour Head. 52 40 18.0 055 44 50.0	Fl W 4s	30.8	4	Mast, red and white cylindrical daymark. 3.0	Flash 1 s; eclipse 3 s. Seasonal. Chart:4701 Edn 08/22 (N22-117)	
279.66	Charlottetown Breakwater Light	52 46 25.6 056 07 16.5	Fl R 4s	2	Pipe tower.	Flash 1 s; eclipse 3 s. Operates 24 h. Seasonal. Chart:5032 Edn 08/22 (N22-096)	
280	Red Island Light	SW. side of island. 53 00 37.6 055 45 36.7	Fl W 4s	28.0	4	Square skeleton tower, red and white rectangular daymark. 4.3	Flash 1 s; eclipse 3 s. Seasonal. Chart:5033 Edn 08/22 (N22-119)	

Notices to Mariners – Monthly Eastern Edition
Section 5: List of Lights, Buoys and Fog Signals Corrections

No.	Name	Position ----- Latitude N. Longitude W.	Light Characteristics	Focal Height in m. above water	Nomi- nal Range	Description ----- Height in meters above ground	Remarks ----- Fog Signals
281 H0084	Domino Point Light Racon -- (Y) X & S Bands	Centre of island. 53 27 42.4 055 44 31.0	Fl W 4s	38.7	7	Square skeleton tower, red and white rectangular daymark. 4.3	Flash 1 s; eclipse 3 s. Seasonal. Chart:4745 Edn 08/22 (N22-116)
284 H0080	Cape North Light	NE. side of point. 53 47 10.4 056 28 35.3	Fl W 4s	72.5	7	Square skeleton tower, red and white rectangular daymark. 4.3	Flash 1 s; eclipse 3 s. Seasonal. Chart:5133 Edn 08/22 (N22-115)
284.35 H0079.7	Leading Mark Island Light	53 45 31.2 057 03 56.4	Fl G 4s	8.9	2	Square skeleton tower, green and white rectangular daymark. 4.5	Flash 1 s; eclipse 3 s. Seasonal. Chart:5134 Edn 08/22 (N22-113)
284.51	Cartwright Fishermans Wharf Light	53 42 07.3 057 01 41.1	Fl G 4s	3	Pipe tower.	Flash 1 s; eclipse 3 s. Operates 24 h. Seasonal. Chart:5138 Edn 08/22 (N22-095)
284.72 H0079.5	Cartwright Wharf Light	53 42 11.0 057 01 16.5	Fl Y 4s	3.4	3	Pipe tower. 2.4	Flash 1 s; eclipse 3 s. Seasonal. Chart:5138 Edn 08/22 (N22-098)
285 H0078	Packs Harbour Light	53 51 31.2 056 59 25.4	Fl W 4s	32.3	6	Square skeleton tower, red and white rectangular daymark, white band. 4.3	Flash 1 s; eclipse 3 s. Seasonal. Chart:5134 Edn 08/22 (N22-114)
286 H0074.5	Grappling Island Light Racon -- (G) X & S Bands	White Bear Islands. 54 27 22.5 056 52 51.5	Fl W 4s	31.5	7	Square skeleton tower, red and white rectangular daymark. 4.1	Flash 1 s; eclipse 3 s. Operates 24 h. Seasonal. Chart:5042 Edn 08/22 (N22-107)
290.5 H0075.65	Rigolet Cove Wharf Light	54 10 53.0 058 25 34.5	Fl Y 4s	4.8	3	Pipe tower. 2.4	Flash 1 s; eclipse 3 s. Seasonal. Chart:5163 Edn 08/22 (N22-110)
291 H0075.6	Rigolet Light	S. of Rigolet Point. 54 10 39.6 058 25 35.9	Fl W 4s	12.3	5	Square skeleton tower. 8.8	Flash 1 s; eclipse 3 s. Visible 180°. Seasonal. Chart:5163 Edn 08/22 (N22-111)
293 H0075.8	Henrietta Island Light	54 04 12.2 058 33 36.6	Fl W 4s	5.5	2	Square skeleton tower, red and white rectangular daymark white horizontal band. 4.6	Flash 1 s; eclipse 3 s. Visible 180°. Operates 24 h. Seasonal. Chart:5163 Edn 08/22 (N22-105)
296 H0076	Green Island Light	At easterly end of Lake Melville Lake. 53 55 37.3 058 59 36.6	Fl W 4s	18.9	2	Square skeleton tower, red and white rectangular daymark. 4.7	Flash 1 s; eclipse 3 s. Operates 24 h. Seasonal. Chart:5163 Edn 08/22 (N22-104)

Notices to Mariners – Monthly Eastern Edition
Section 5: List of Lights, Buoys and Fog Signals Corrections

No.	Name	Position ----- Latitude N. Longitude W.	Light Characteristics	Focal Height in m. above water	Nomi- nal Range	Description ----- Height in meters above ground	Remarks ----- Fog Signals
-----	------	--	--------------------------	--	-----------------------	--	---------------------------------

NOTRE DAME BAY (LL 326 – 395)

361.095	Whale Back Rock light buoy DDN	49 31 10.3 054 58 24.1	Q W 1s	Black and yellow spar, marked "DDN".	Operates 24 h. Seasonal. Chart:4864 Edn 08/22 (N22-081)
383.3	Drovers Rock light buoy DDR	49 46 53.9 054 06 35.0	Q W 1s	Black and yellow, marked "DDR".	Operates 24 h. Seasonal. Chart:4861 Edn 08/22 (N22-085)
383.78	Browns Point light buoy DJ1/3	49 44 06.8 054 10 19.0	Q G 1s	Green spar, marked "DJ1/3".	Operates 24 h. Seasonal. Chart:4861 Edn 08/22 (N22-082)

TRINITY BAY (LL 450.1 – 471.51)

470.52	Old Perican Inner light buoy TP	48 05 17.8 053 00 25.9	Fl Y 4s	Yellow spar, marked "TP".	Operates 24 h. Seasonal. Chart:4850 Edn 08/22 (N22-133)
--------	------------------------------------	---------------------------	---------	-------	-------	---------------------------	--

ATLANTIC COAST

NOVA SCOTIA, SOUTHEAST COAST (LL 327 – 684.02)

491	Shag Bay Breakers light and bell buoy AT50	Off SW. extremity of shoal. 44 28 03.3 063 50 10.7	Fl R 4s	Red, marked "AT50".	Year round. Chart:4386 Edn 08/22 (F22-010)
565.04	Petpeswick light buoy HH8	Eastern shore. 44 42 14.6 063 10 09.8	Fl R 4s	Red spar, marked "HH8".	Seasonal. Chart:4236 Edn 08/22 (F22-008)
565.05	Petpeswick light buoy HH9	Eastern shore. 44 42 27.1 063 10 03.9	Fl G 4s	Green spar, marked "HH9".	Seasonal. Chart:4236 Edn 08/22 (F22-009)

PRINCE EDWARD ISLAND (LL 942 – 1084.7)

953.5	Wheeler Bar light buoy NH3	E. of bar. 46 09 30.2 062 29 41.4	Fl G 4s	Green spar, marked "NH3".	(Winter spar.) Seasonal (in place year round). Chart:4935 Edn 08/22 (G22-063)
953.7	Georgetown Range light buoy NH9	Georgetown Harbour. 46 09 45.7 062 31 10.2	Q G 1s	Green spar, marked "NH9".	Year round. Chart:4935 Edn 08/22 (G22-064)
1005.13	West River light buoy CH13	46 11 29.2 063 13 12.7	Q G 1s	Green, marked "CH13".	Seasonal. Chart:4466 Edn 08/22 (G22-039)

Notices to Mariners – Monthly Eastern Edition
Section 5: List of Lights, Buoys and Fog Signals Corrections

No.	Name	Position ----- Latitude N. Longitude W.	Light Characteristics	Focal Height in m. above water	Nomi- nal Range	Description ----- Height in meters above ground	Remarks ----- Fog Signals
1005.16	West River light buoy CH16	46 11 19.2 063 13 37.7	Fl R 4s	Red, marked "CH16".	Seasonal. Chart:4466 Edn 08/22 (G22-040)
GULF OF ST. LAWRENCE (LL 1169.1 – 1426, 1477.5 – 1584)							
1172	The Lump light buoy M5	47 06 21.6 064 57 58.7	Q G 1s	Green spar, marked "M5".	Seasonal (in place year round). Chart:4911 Edn 08/22 (G22-073)
1172.5	The Lump light buoy M6	47 06 24.7 064 58 10.9	Q R 1s	Red spar, marked "M6".	Seasonal (in place year round). Chart:4911 Edn 08/22 (G22-074)
1172.51	The Lump light buoy M7	47 06 22.0 064 58 16.6	Fl G 4s	Green spar, marked "M7".	Seasonal (in place year round). Chart:4911 Edn 08/22 (G22-075)
1173	The Swashway light buoy M10	47 06 55.2 064 58 41.7	Fl R 4s	Red, marked "M10".	Seasonal (in place year round). Chart: 4911 Edn 08/22 (G22-076)
1173.72	Miramichi Bar light buoy M15/1	47 08 23.1 065 00 06.8	Q G 1s	Green spar, marked "M15/1".	Seasonal (in place year round). Chart:4911 Edn 08/22 (G22-077)
1203.1	Oak Channel light buoy M44	47 04 55.4 065 18 05.7	Fl R 4s	Red spar, marked "M44".	Seasonal (in place year round). Chart:4912 Edn 08/22 (G22-078)
1248.11	Shippegan Gully light buoy TJ4	47 42 44.8 064 39 30.9	Fl R 4s	Red spar, marked "TJ4".	Operates 24 h. Seasonal. Chart:4920 Edn 08/22 (G22-069)
1248.13	Shippegan Gully light buoy TJ6	47 42 48.4 064 39 40.5	Q R 1s	Red spar, marked "TJ6".	Buoy may be repositioned due to shifting channel. Seasonal. Chart:4920 Edn 08/22 (G22-043, 072)
1248.151	Shippegan Gully light buoy TJ8	47 42 55.4 064 39 54.4	Q R 1s	Red spar, marked "TJ8".	Seasonal. Chart:4920 Edn 08/22 (G22-068)
1250.7	Shippegan Gully Cautionary light buoy TJA	47 43 23.5 064 40 05.6	Fl Y 4s	Yellow, marked "TJA".	Buoy may be repositioned due to shifting channel. Seasonal. Chart:4920 Edn 08/22 (G22-065)
1253.1	Shippegan Gully light buoy TJ22	47 43 18.5 064 40 02.0	Q R 1s	Red, marked "TJ22".	(Winter spar.) Seasonal. Chart:4920 Edn 08/22 (G22-071)

Notices to Mariners – Monthly Eastern Edition
Section 5: List of Lights, Buoys and Fog Signals Corrections

No.	Name	Position ----- Latitude N. Longitude W.	Light Characteristics	Focal Height in m. above water	Nomi- nal Range	Description ----- Height in meters above ground	Remarks ----- Fog Signals
1257.5	Shippegan Gully light buoy TJ27	47 43 27.5 064 40 02.8	Fl G 4s	Green, marked "TJ27".	(Winter spar.) Buoy may be repositioned due to shifting channel. Seasonal. Chart:4920 Edn 08/22 (G22-066)
1258.1	Shippegan Gully light buoy TJ31	47 43 42.3 064 40 04.2	Fl G 4s	Green spar, marked "TJ31".	Buoy may be repositioned due to shifting channel. Seasonal. Chart:4920 Edn 08/22 (G22-070)
1262.8 H1550	Fox Dens Gully Light	47 53 12.1 064 30 15.2	LF W 6s	4.5	9	Square skeleton tower, red and white daymark.	Flash 2 s; eclipse 4 s. Seasonal. Chart:4913 Edn 08/22 (G22-047)
1262.9 H1551	Pigeon Hill Wharf	47 52 43.7 064 30 26.1	Fl R 4s	4.0	5	Pipe swing pole, red and white triangular daymark red triangle in center. 3.6	Flash 1 s; eclipse 3 s. Operates at night only. Seasonal. Chart:4913 Edn 08/22 (G22-048)
1273.4	Miscou Channel light buoy ED1	47 53 21.5 064 34 15.3	Q G 1s	Green spar, marked "ED1".	Buoy may be repositioned due to shifting channel. Seasonal. Chart:4913 Edn 08/22 (G22-061)
1274.1 H1559	Harper Point	W. side of Miscou Harbour entrance. 47 53 38.6 064 34 39.7	Fl G 4s	3.7	5	Pipe swing pole, green, white and green square daymark. 3.6	Flash 1 s; eclipse 3 s. Operates at night only. Seasonal. Chart:4913 Edn 08/22 (G22-050)
1274.2 H1562	Miscou Wharf	On outer end of wharf. 47 53 40.1 064 34 37.5	Fl R 4s	4.9	6	Pipe swing pole, red and white triangular daymark, red triangle in center. 3.7	Flash 1 s; eclipse 3 s. Operates at night only. Seasonal. Chart:4913 Edn 08/22 (G22-049)
1285.5	Shippegan Channel light buoy EG12	47 49 42.9 064 44 11.3	Fl R 4s	Red spar, marked "EG12".	Seasonal (in place year round). Chart:4913 Edn 08/22 (G22-059)

ST. LAWRENCE RIVER (LL 1584.5 – 1772, 1823.8 – 2185.7, 2273 – 2365.95)

1754.2 H2090	Anse aux Basques range						Delete from list.
1754.3 H2090.1							Delete from list. Chart:1320 Edn 08/22 (Q22-033, 034)

Notices to Mariners – Monthly Eastern Edition
Section 5: List of Lights, Buoys and Fog Signals Corrections

No.	Name	Position ----- Latitude N. Longitude W.	Light Characteristics	Focal Height in m. above water	Nomi- nal Range	Description ----- Height in meters above ground	Remarks ----- Fog Signals
2117 H2401	Traverse de Nicolet range	Batture aux Outardes. 46 15 34.9 072 37 48.4	F G	9.5	12	White cylindrical tower, fluorescent red daymark with black vertical stripe. 5.0	Visible in line of range. Operates 24 h. Emergency mode. Year round.
2118 H2401.1		096°44' 582 m from front.	F G	29.0	12	Square skeleton tower, fluorescent red daymark with black vertical stripe. 23.2	Visible in line of range. Operates 24 h. Emergency mode. Year round.
2177 H2422	Route Sainte- Anne-de-Sorel range	On S. shore. 46 03 32.4 073 03 21.6	F G	13.1	16	White Pyramid tower, fluorescent red daymark with black vertical stripe. 8.1	Visible in line of range. Operates 24 h. Emergency mode. Year round.
2177.1			F G	12.9	5	White square tower. 7.3	Visible 360°. Emergency mode.
2178 H2422.1		231°51' 771 m from front.	F G	30.7	16	Tripod skeleton tower, fluorescent red daymark with black vertical stripe. 25.2	Visible in line of range. Operates 24 h. Emergency mode. Year round.
							Chart:1312 Edn 08/22 (Q22-037, 038)
							Chart:1312 Edn 08/22 (Q22-035, 036)

INLAND WATERS

NORTH CHANNEL – LAKE HURON (LL 983 – 1041)

987	Badgeley Island	On SE. point of island. 45 55 42.5 081 36 07.5	Fl W 4s	12.9	7	White cylindrical tower with red band at top. 9.2	Seasonal (in place year round). Chart:2245 Edn 08/22 (D22-021)
-----	-----------------	---	---------	------	---	---	--

LAKE SUPERIOR (LL 1082 – 1161)

1132	Hare Island light buoy A2	W. of Thunder Cape. 48 17 54.0 088 59 12.0	Fl R 4s	Red spar, marked "A2".	Seasonal (in place Year round). Chart:2301 Edn 08/22 (D22-029)
------	------------------------------	---	---------	-------	-------	------------------------	--

OTTAWA RIVER (LL 1233.3 – 1322)

1245.5	Pointe-aux-Anglais light buoy H92	Lac des Deux Montagnes. 45 29 31.7 074 10 53.5	Fl R 4s	Red, marked "H92".	Seasonal. Chart:1510 Edn 08/22 (Q22-024)
--------	--------------------------------------	---	---------	-------	-------	--------------------	--