



Fisheries and Oceans
Canada

Pêches et Océans
Canada

Canadian
Coast Guard

Garde côtière
canadienne

Notices to Mariners

Edition No. 09/2022
September 30, 2022



Safety First, Service Always

Monthly Eastern Edition

Canada 

Notices to Mariners – Monthly Eastern Edition
Edition No. 09/2022

Aussi disponible en français :
Avis aux navigateurs – Édition mensuelle de l'Est
Édition n° 09/2022

Published under the Authority of:

Canadian Coast Guard Programs
Aids to Navigation and Waterways
Fisheries and Oceans Canada
Montreal, QC H2Y 2E7

For more information, contact Notmar.XNCR@dfo-mpo.gc.ca.

© His Majesty the King in Right of Canada,
as represented by the Minister of Fisheries, Oceans
and the Canadian Coast Guard, 2022.

Cat. No. Fs152-5E-PDF (Electronic PDF, English)
ISSN 1719-7678

Cat. No. Fs152-5F-PDF (Electronic PDF, French)
ISSN 1719-7694

A web version is available here:

<https://www.notmar.gc.ca/monthly> (English)

<https://www.notmar.gc.ca/mensuel> (French)

Explanatory Notes – Notices to Mariners (NOTMAR)

Geographical positions refer directly to the graduations of the largest scale Canadian Hydrographic Service chart (unless otherwise indicated).

Bearings refer to the true compass and are measured clockwise from 000° (North) clockwise to 359°; those relating to lights are from seaward.

Visibility of lights is that in clear weather.

Depths - The units used for soundings (metres, fathoms or feet) are stated in the title of each chart.

Elevations are normally given above Higher High Water, Large Tide (unless otherwise indicated).

Distances may be calculated as follows:

- 1 nautical mile = 1,852 metres (6,076.1 feet)
- 1 statute mile = 1,609.3 metres (5,280 feet)
- 1 metre = 3.28 feet

Temporary and Preliminary Notices to Mariners – Section 1A of *Notices to Mariners*

These notices are indicated by a (T) or a (P), respectively. Please note that nautical charts are not amended by the Canadian Hydrographic Service for temporary (T) and preliminary (P) notices. It is recommended that mariners chart these corrections in pencil. For the list of charts affected by (T) & (P) notices, please refer to the current [Notices to Mariners - Monthly Summary of Temporary and Preliminary Notices](#) publication.

Suggestions and Corrections Form

This form is specifically for suggestions and corrections to Notices to Mariners publications. It is available [online](#) and also in [fillable PDF format](#) included with the monthly publication ZIP file.

To submit comments and suggestions on possible improvements to the various publications and services: Notmar.XNCR@dfo-mpo.gc.ca.

To report chart discrepancies and/or corrections to the *Canadian Sailing Directions* booklets: Fill out the [Marine Information Reporting Form](#) and/or email chsinfo@dfo-mpo.gc.ca.

To report emergencies or navigational hazards: [Contact your nearest MCTS centre](#)

- VHF channel 16 (156.8 MHz)
- MF/HF frequency 2182 kHz/4125 kHz (where available)
- *16 on a cellphone (where available)

NOTMAR Website – Monthly Editions, Chart Corrections and Chart Patches

The NOTMAR website allows users to access the [monthly publications](#), [chart corrections](#), and [chart patches](#).

Users can subscribe for free to the [email notification service](#) to receive notifications when charts of interest are updated, including their patches, as well as when a new Monthly Edition of *Notices to Mariners* is published.

In addition, the monthly publication and related files to download, such as chart patches, can be obtained all together through the download of a single ZIP file.

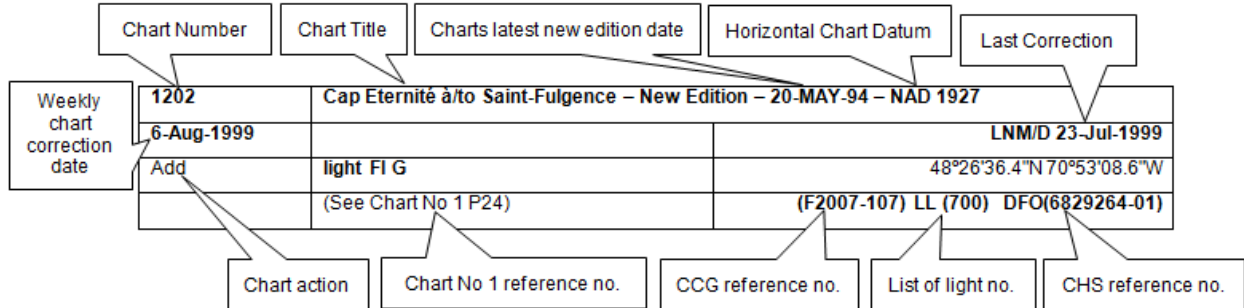
Explanatory Notes – Canadian Hydrographic Service (CHS)

Chart Corrections – Section 2 of *Notices to Mariners*

Corrections to nautical charts will be listed in numerical order by chart number. Each chart correction listed applies only to that particular chart. Related charts, if any, will have their own specific correction listed separately.

Users should also refer to CHS *Chart 1: Symbols, Abbreviations and Terms* for additional information pertaining to the correction of charts.

The illustration below describes the elements that will comprise a typical Section 2 chart correction:



The last correction number is identified with the **LNMD** or **Last Notice to Mariners Number / Date**.

Mariners are advised that only the most critical changes that directly affect safety to navigation are issued in “Section 2 – Chart Corrections.” This limitation is required to ensure that charts remain as clear and easy to read as possible. As a result, mariners may see minor discrepancies of a non-critical nature between information in official publications. For example, a small change in the nominal range or focal height of a light may not result in the production of a chart correction in *Notices to Mariners*, but may result in a correction in the [List of Lights, Buoys and Fog Signals](#) publication.

Note: In the case of a discrepancy between information provided on CHS charts relating to aids to navigation, and the *List of Lights, Buoys and Fog Signals* publication, the latter shall be deemed as containing the most up-to-date information.

Canadian Nautical Charts & Publications

A source list of Canadian nautical charts and publications is published in Notice No. 14 of the *Notices to Mariners Annual Edition 2022*. The source supply and the prices effective at the time of printing are listed. For current chart edition dates, please refer to the following website: www.chs-shc.gc.ca/charts-cartes/paper-papier/index-eng.asp.

Explanatory Notes – Marine Communications and Traffic Services (MCTS)

Navigational Warnings / Notices to Shipping

The Canadian Coast Guard (CCG) is implementing a number of changes to the aids to navigation system in Canada.

These changes are advertised as Navigational Warnings, formerly called Notices to Shipping¹, that are broadcast by the CCG, and are then followed up with Notices to Mariners, then charts are updated by hand correction, reprints or new editions.

Mariners are advised that all relevant Navigational Warnings (NAVWARN) should be kept until superseded by Notices to Mariners or through revised charts issued by the Canadian Hydrographic Service (CHS).

NAVWARN are accessible on the applicable regional page on the CCG Navigational Warnings website at <http://nis.ccg-gcc.gc.ca>.

CHS is reviewing the impact of these changes with CCG and together are preparing an action plan on the issuing of chart revisions.

For further information, contact your regional NAVWARN Issuing Desk.

<p>Atlantic Region (North) *Port aux Basques MCTS Centre</p> <p>“N” Series NAVWARN</p> <p>Canadian Coast Guard 49 Stadium Rd. P.O. Box 99 Port aux Basques, NL A0M 1C0</p> <p>Telephone: 709-695-2168 or 1-800-563-9089 Facsimile: 709-695-7784</p> <p>Email: NAVWARN.MCTSPortAuxBasques@innav.gc.ca</p>	<p>Central Region *Prescott MCTS Centre</p> <p>“Q” and “C” Series NAVWARN</p> <p>Canadian Coast Guard 401 King Street West P.O. Box 1000 Prescott, ON K0E 1T0</p> <p>Telephone: 613-925-0666 Facsimile: 613-925-4519</p> <p>Email: NAVWARN.MCTSPrescott@innav.gc.ca</p>
<p>Atlantic Region (South) *Sydney MCTS Centre</p> <p>“M” Series NAVWARN</p> <p>Canadian Coast Guard 1190 Westmount Road Sydney, NS B1R 2J6</p> <p>Telephone: 902-564-7751 or 1-800-686-8676 Facsimile: 902-564-7662</p> <p>Email: NAVWARN.MCTSSydney@innav.gc.ca</p>	<p>Arctic Region *Iqaluit MCTS Centre</p> <p><i>Operational from approximately mid-May until late December.</i></p> <p>“A” and “H” Series NAVWARN</p> <p>Canadian Coast Guard P.O. Box 189 Iqaluit, NU X0A 0H0</p> <p><u>“A” Series NAVWARN</u> Telephone: 867-979-5269</p> <p><u>“H” Series NAVWARN</u> Telephone: 867-979-0310 Facsimile: 867-979-4264</p> <p>Email: NAVWARN.MCTSIqaluit@innav.gc.ca</p>

*Service available in English and in French.

¹ The expression “Notice to Shipping” was changed to “Navigational Warning” in January 2019.

Table of Contents

Section 1: General and Safety Information		1
*401/20	Transport Canada – COVID-19 Measures, Updates and Guidance	1
*206/22	Transport Canada – Annual Edition of Notices to Mariners 2022 - Section A3, Notice 7A: Voyage Planning for Vessels Intending to Navigate in Canada's Northern Waters	1
*401/22	Protecting the North Atlantic Right Whale: Speed Restriction Measures in the Gulf of St. Lawrence.....	1
*406/22	Saguenay–St. Lawrence Marine Park and Surrounding Waters – Whale Protection	8
*407/22	Saguenay–St. Lawrence Marine Park - Beluga Whale Protection: Slowdown Area at the Mouth of the Saguenay Fjord and Area Closure at Baie Sainte-Marguerite	10
*901/22	Canadian Hydrographic Service – Nautical Charts.....	12
*902/22	Canadian Hydrographic Service – Electronic Navigational Charts.....	12
*903/22	Canadian Hydrographic Service – Raster Digital Charts (BSB V3).....	13
*904/22	Transport Canada – Ship Safety Bulletin #02 and #18/2021 and #10/2022	13
*906/22	Lake Ontario/Lac Ontario (Western Portion/Partie Ouest) – Unlit Buoy Permanently Established	14
*907/22	Pointe aux Pins to/à Point Pelee – Unlit Buoy Permanently Established	14
*908/22	Plans Baie des Chaleurs / Chaleur Bay - Côte sud / South Shore – Unlit Buoys Repositioned.....	14
*909/22	Hardie Island to/à Fort Good Hope Kilometre 1040 / Kilometre 1100 – Daybeacon Permanently Discontinued.....	14
Section 1A: Temporary and Preliminary Notices		15
Reminder – Comment Period for Active Preliminary Notices		15
*910(T)/22	Smith Falls to/à Kingston including/y compris Tay River to/à Perth – Construction Operations Completed	15
*911(P)/22	Britannia Bay à/to Chats Falls – Aid to Navigation to be Discontinued.....	16
*912(P)/22	Canadian Coast Guard – Differential Global Positioning System (DGPS) in Canada ...	16
Section 2: Chart Corrections		17
Section 3: Radio Aids to Marine Navigation Corrections		37
*913/22	Radio Aids to Marine Navigation 2022 (Atlantic, St. Lawrence, Great Lakes, Lake Winnipeg, Arctic and Pacific).....	37
Section 4: Canadian Sailing Directions Corrections		46
Section 5: List of Lights, Buoys and Fog Signals Corrections		47

Numerical Index of Canadian Charts Affected

This numerical index lists all nautical charts mentioned in this monthly edition of Notices to Mariners. Only charts appearing in Section 2 of this publication require a chart correction. The appearance of charts in all other sections, particularly those related to the correction of other nautical publications, is included here for reference.

Chart No.	Pages	Chart No.	Pages	Chart No.	Pages
1230	17	4625	27, 47		
1310	17, 18, 19	4821	15		
1315	19	4823	27		
1316	19, 53	4831	27		
1317	19	4832	27, 28, 47		
1429	20	4843	47		
1550	16	4845	28, 50		
2077	14	4847	15, 50		
2100	21	4849	28, 29		
2122	14	4850	49		
2123	21	4854	49		
2224	21	4855	29		
2302	21	4858	15		
2312	21	4861	29, 30, 48, 49		
2314	22	4862	30, 31, 47, 48		
3494	12	4863	31, 48		
3497	12	4886	31, 32, 48		
4022	47	4906	52		
4203	15	4909	32		
4266	22, 23, 24	4911	32		
4277	24	4912	33		
4367	24	4913	34, 52		
4379	24	4920	14, 34, 35, 52		
4406	51	5138	35		
4419	25	6021	35		
4440	26	6035	15		
4459	26	6037	15		
4460	15	6105	35		
4466	15	6108	35, 53		
4468	26, 27, 52, 53	6421	14		
4486	27	7578	12		
4491	27, 50, 51	7787	36		
4529	48	7788	36		
4585	47	8005	36		
4622	47				

Section 1: General and Safety Information

***401/20 Transport Canada – COVID-19 Measures, Updates and Guidance**

(Recurrent publication of notice *401/20, originally published in the *Notices to Mariners – Monthly Eastern Edition 04/2020* publication.)

Please refer to the link below for the latest updates to transportation related measures taken by Transport Canada in response to the evolving novel Coronavirus disease (COVID-19):
<https://www.tc.gc.ca/en/initiatives/covid-19-measures-updates-guidance-tc.html>.

For travel advice and all other updates, please visit: Canada.ca/coronavirus.

***206/22 Transport Canada – Annual Edition of Notices to Mariners 2022 - Section A3, Notice 7A: Voyage Planning for Vessels Intending to Navigate in Canada's Northern Waters**

(Recurrent publication of notice *206/22, originally published in the *Notices to Mariners – Monthly Eastern Edition 02/2022* publication.)

Transport Canada has revised notice 7A, Voyage Planning for Vessels Intending to Navigate in Canada's Northern Waters, of the *Annual Edition of Notices to Mariners* to reflect Arctic Shipping Safety and Pollution Prevention Regulations ([ASSPPR](#)) and to provide further guidance on voyage planning.

***401/22 Protecting the North Atlantic Right Whale: Speed Restriction Measures in the Gulf of St. Lawrence**

(Recurrent publication of notice *401/22, originally published in the *Notices to Mariners – Special Edition 02/2022* publication.)

PURPOSE

This notice describes the speed restriction zones that vessels must follow in the Gulf of St. Lawrence.

The Government of Canada has established these zones to reduce the risk of vessel colliding with North Atlantic right whales (NARW).

BACKGROUND

Due to changing migration patterns of North Atlantic right whales and their increased presence in the Gulf of St. Lawrence, the Government of Canada has set seasonal speed restrictions in specific zones. These speed restrictions zones are defined as “static zones,” “dynamic shipping zones,” “seasonal management areas,” a trial “voluntary slowdown zone” and a “restricted area.” [See the map below for details.](#)

Note: Vessels **must follow** Navigational Warnings outlining the speed restrictions. The *Interim Order for the Protection of North Atlantic Right Whales (Eubalaena Glacialis) in the Gulf of St. Lawrence, 2022* enables the issuance of Navigational Warnings (NAVWARNs) imposing speed restrictions and navigation restrictions.

Speed restriction zones are described in monthly Notices to Mariners (NOTMARs), which are published by the Canadian Coast Guard. The status of these zones is broadcast through NAVWARNs, which are published by the Coast Guard's Marine Communications and Traffic Services Centres.

CHANGES TO SPEED RESTRICTION ZONES AND MEASURES

Based on consultations with industry and on scientific data, changes to the speed restriction zones will be effective from April 20, 2022, while the restricted area will be implemented based on whale presence:

- For a third and final year, a trial voluntary slowdown of 10.0 knots over the ground spanning from Cabot Strait (a line running from Cape North NS to Cape Ray NL) to the eastern edge of dynamic shipping zone E will be implemented at the beginning and end of the North Atlantic right whale season.

- Again this year, a restricted area located in and near Shediac Valley. The location and size are both based on historical data of North Atlantic right whale aggregations, while the triggering mechanism is based on in-season detections.
- The 36.57 m (20-fathom) shallow water protocol will apply once again to all commercial fishing vessels.

Please check the latest NAVWARN for all speed restrictions currently in effect.

SPEED RESTRICTION MEASURES FOR 2022

These restrictions will be in effect from **April 20 to November 15, 2022**.

Exceptions

The following exception will apply to **all** measures:

- a) a vessel in distress or providing assistance to a person or a vessel in distress;
- b) a government vessel being used
 - (i) for law enforcement activities;
 - (ii) for search and rescue operations; or
 - (iii) to ensure the competency of the crew or the operational readiness of the vessel or crew with respect to such activities or operations.

STATIC ZONES

In the static zones, **all** vessels above **13 m** in length overall (LOA) must proceed at a speed of not more than 10.0 knots over the ground.

Exceptions

Air cushion vessels operated by or on behalf of the Government of Canada that are engaged in ice-clearing activities from April to June in and around Chaleur Bay are exempted when in operation.

36.57 m (20-fathom) shallow water protocol

Vessels engaged in any commercial fishing activity may proceed at a safe operational speed in waters not more than 36.57 m (20 fathom) deep.

If a notice to fish harvesters states that at least one right whale has been detected within static zone in waters that are not more than 36.57 m deep, the 10 knots speed limit will apply to all vessels above 13 m in length overall (LOA) 15 days after the day on which the whale was detected.

If a new notice to fish harvesters is published or broadcast during the last seven days of the 15-day period, the speed limit will continue to apply for a further 15 days after the day on which the new detection took place.

Coordinates for the northern static zone:

- 50° 20' N, 065° 00' W
- 49° 13' N, 065° 00' W
- 48° 40' N, 064° 13' W
- 48° 40' N, 062° 40' W
- 48° 03' N, 061° 07.5' W
- 47° 58.1' N, 061° 03.5' W
- 48° 00' N, 061° 00' W
- 49° 04' N, 061° 00' W
- 49° 04' N, 062° 00' W
- 49° 43' N, 063° 00' W
- 50° 20' N, 063° 00' W

Coordinates for the southern static zone:

- 48° 40' N, 065° 00' W
- 48° 40' N, 062° 40' W
- 48° 03' N, 061° 07.5' W
- 47° 58.1' N, 061° 03.5' W
- 47° 10' N, 062° 30' W
- 47° 10' N, 065° 00' W

DYNAMIC SHIPPING ZONES

There are five dynamic shipping zones (DSZ) located in the routing systems north and south of Anticosti Island: A, B, C, D and E.

Coordinates for the dynamic shipping zones:

Zone A

- 49° 41' N, 065° 00' W
- 49° 20' N, 065° 00' W
- 49° 11' N, 064° 00' W
- 49° 22' N, 064° 00' W

Zone B

- 49° 22' N, 064° 00' W
- 49° 11' N, 064° 00' W
- 48° 48' N, 063° 00' W
- 49° 00' N, 063° 00' W

Zone C

- 49° 00' N, 063° 00' W
- 48° 48' N, 063° 00' W
- 48° 24' N, 062° 00' W
- 48° 35' N, 062° 00' W

Zone D

- 50° 16' N, 064° 00' W
- 50° 00' N, 064° 00' W
- 49° 56' N, 063° 00' W
- 50° 16' N, 063° 00' W

Zone E

- 48° 35' N, 062° 00' W
- 48° 24' N, 062° 00' W
- 48° 03' N, 061° 07.5' W
- 47° 58.1' N, 061° 03.5' W
- 48° 00' N, 061° 00' W
- 48° 10.5' N, 061° 00' W

When a North Atlantic right whale is detected in a dynamic shipping zone:

- All vessels will be notified via a NAVWARN; and
- Vessels above **13 m** in length overall (LOA) must proceed at a speed of not more than 10.0 knots over the ground within that zone.

Even though dynamic shipping zones overlap with static zones, vessels can travel at a safe operational speed in dynamic shipping zones when they are not under speed restriction. They must also keep in mind that North Atlantic right whales may be nearby.

Speed restrictions in the dynamic shipping zones

The detection of North Atlantic right whales in one or more dynamic shipping zone(s), will trigger a speed restriction in the concerned zone(s). The speed restriction in the dynamic shipping zone(s) will be in effect for 15 days from the date of detection. In the event of a new North Atlantic right whale detection occurring in the last 7 days of the 15-day slowdown period, the speed restriction may be extended for an additional 15 days from the date of the new detection. This would continue until no NARW are detected.

When a NAVWARN is issued implementing a speed restriction in one or more dynamic shipping zone(s), vessels above **13 m** in length (LOA) must not exceed a speed of 10.0 knots over the ground. Within any dynamic zone that is not subject to a speed restriction, mariners may proceed at a safe operational speed. Mariners are encouraged to take into consideration the potential for their vessel striking North Atlantic right whales when considering a “safe operational speed” during navigation.

SEASONAL MANAGEMENT AREAS

Seasonal management area 1 (SMA-1) and seasonal management area 2 (SMA-2) are speed restriction areas located north and south of dynamic shipping zone E, respectively.

Within seasonal management areas, vessels above **13 m** in length (LOA):

- must restrict their speed so as not to exceed 10.0 knots over the ground from April 20 to June 28, 2022; **and**
- are allowed to proceed at a safe operational speed from June 29 to November 15, 2022, unless a North Atlantic right whale is detected. If a whale is detected, a speed restriction of 10.0 knots over the ground will be triggered for 15 days from the date of detection. In the event of a new North Atlantic right whale detection occurring in the last 7 days of the 15-day slowdown period, the speed restriction may be extended for an additional 15 days from the date of the new detection. This would continue until no North Atlantic right whales are detected.

Coordinates for the SMA-1:

- 49° 04' N, 062° 00' W
- 49° 04' N, 061° 00' W
- 48° 10.5' N, 061° 00' W
- 48° 35' N, 062° 00' W

Coordinates for the SMA-2:

- 48° 24' N, 062° 00' W
- 48° 03' N, 061° 07.5' W
- 47° 58.1' N, 061° 03.5' W
- 47° 26.69' N, 062° 00' W

RESTRICTED AREA

In the summer months, an important proportion of the total North Atlantic right whale population gathers for feeding and surface activity near the [Shediac Valley](#). Since this makes the North Atlantic right whale more susceptible to vessel collisions, a mandatory restricted area will be implemented in and near the [Shediac Valley](#) and will come into force once 80% of the restricted area is closed to fishing for the season as per [the Department of Fisheries and Oceans's right whale closure protocol](#). The restricted area will be lifted once the North Atlantic right whale detections decrease in the restricted area.

The size and location of the area are determined based on historical detection data of North Atlantic right whales. All necessary details can be found in the *Interim Order for the Protection of North Atlantic Right Whales (Eubalaena Glacialis) in the Gulf of St. Lawrence, 2022*. Triggering and lifting of the restricted area will be communicated to mariners through a NAVWARN and notice to fish harvesters.

Vessels above **13 m** in length (LOA) will be required to:

- avoid the area unless they are part of the exceptions listed in the *Interim Order for the Protection of North Atlantic Right Whales (Eubalaena Glacialis) in the Gulf of St. Lawrence, 2022*;
- transit the area at a speed not exceeding 8.0 knots over the ground if they are part of the exceptions.

The following exceptions will apply to the restricted area. Vessels listed can travel through the area at not more than 8.0 knots over the ground:

- A vessel being used for commercial fishing;
- A vessel being used for fishing under the authority of a licence issued under the *Aboriginal Communal Fishing Licences Regulations*;
- A vessel being used for research purposes on behalf of the Government of Canada;
- A vessel being used as part of the Department of Fisheries and Oceans' Marine Mammal Response Program to assist a marine mammal or sea turtle in distress or to access or retrieve a deceased marine mammal or sea turtle;
- A vessel authorized by the Government of Canada to retrieve or identify the location of abandoned or lost fishing gear;
- A vessel involved in pollution response operations;
- A vessel avoiding immediate or unforeseen danger;
- A vessel involved in research relating to right whales as part of a project that has received funding from the Government of Canada.

The following vessels can travel through the restricted area at a speed over 8.0 knots, but below 10.0 knots over the ground as required by the static speed restriction zone:

- A vessel being used by an employee of the Government of Canada or peace officer who is performing their duties.

The location and size of the restricted area will not be modified during the season.

Coordinates for the restricted area:

- 48°31.8' N, 063°39.6' W
- 48°24.72' N, 063°17.88' W
- 47°18.84' N, 064°10.8' W
- 47°27.18' N, 064°30.72' W

Inclement weather exception

Mariners will be notified in advance via a NAVWARN should the speed restriction status change in any zone or area, due to inclement weather.

Within any zone or area that is no longer subject to a speed restriction due to adverse weather conditions, mariners may proceed at a safe operational speed. Mariners are however encouraged to take into consideration the potential for their vessel striking North Atlantic right whales when considering a “safe operational speed” during navigation.

*Non-excepted vessels are still prohibited from transiting through the restricted area.

TRIAL VOLUNTARY SLOWDOWN IN CABOT STRAIT

To coincide with the North Atlantic right whales entering and exiting the Gulf of St. Lawrence in large numbers, a trial voluntary slowdown is being put in place for the third year in Cabot Strait from April 20 to June 28, 2022, and from September 28 to November 15, 2022.

- During these periods, vessels above 13 m in length (LOA) are requested to voluntarily reduce their speed as to not exceed 10.0 knots over the ground.

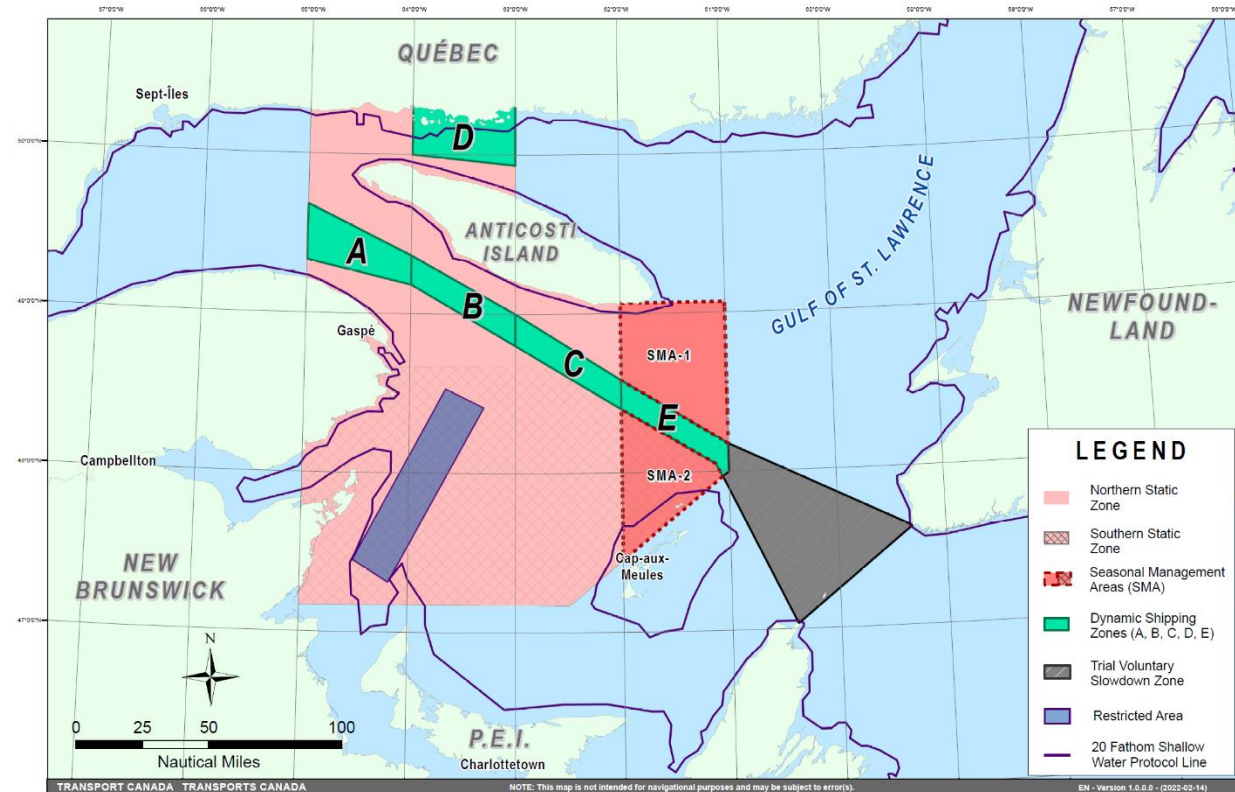
Voluntary slowdown zone coordinates:

- 48° 10.5' N, 061° 00' W
- 47° 37.2' N, 059° 18.5' W
- 47° 02' N, 060° 23.7' W
- 47° 58.1' N, 061° 03.5' W
- 48° 00' N, 061° 00' W

MAP OF THE GULF OF ST. LAWRENCE

The following map shows

- the static zones (north and south), in pink;
- the dynamic shipping zones (A, B, C, D and E), in green;
- the seasonal management areas, in dark pink;
- the trial voluntary slowdown zone, in grey;
- the restricted area, in dark blue; and
- the 36.57 m (20 fathom) shallow water protocol line.



This map is for visual representation only and is not to be used for navigation or enforcement.

NAVWARN BROADCASTS

The Canadian Coast Guard issues NAVWARNs:

- by radio broadcast; and
- online at [Canada's Maritime Information Portal](#) and its [Navigational Warnings](#) site.

Mariners must ensure they have accurate and up-to-date information about the protection of the North Atlantic right whale, as in all applicable NOTMARs and NAVWARNs.

For the North Atlantic right whale speed restrictions, the NAVWARN(s) currently in effect will be provided to vessels subject to the *Vessel Traffic Services Zone Regulations* or the *Eastern Canada Vessel Traffic Services Zone Regulations*:

Outbound vessels will receive NAVWARNs

- at Calling-in-Point 10 (St-Laurent); or
- upon a departure downstream from the Quebec pilot station (including the Saguenay River, Chaleur Bay, Miramichi Bay, etc.)

Inbound vessels will receive NAVWARNs

- when a clearance to enter Canadian waters is granted

Vessels in transit will receive NAVWARNs

- at the last reporting point prior to entering the mandatory speed restriction zones; and/or
- at 10 nautical miles before they enter the mandatory speed restriction zones

For those vessels not subject to the above-mentioned regulations, vessel operators are required to monitor broadcasts by the Canadian Coast Guard's Marine Communications and Traffic Services network for the most up-to-date information. For marine radio frequencies and broadcast times, information may be found in the [Radio Aids to Marine Navigation](#) publication.

AIDS TO NAVIGATION

The Canadian Coast Guard is currently testing virtual Automatic Identification System (AIS) aids to navigation (AIS AtoN) in specific areas. These aids notify mariners of a dynamic shipping zone and/or a seasonal management area subject to a speed restriction.

Each zone is delimited by four to six virtual AIS AtoN, which can be displayed on a ship's navigation equipment, such as

- Electronic Chart Display and Information System (ECDIS);
- Electronic Chart System (ECS);
- RADAR;
- Minimum Keyboard Display (MKD); and
- Electronic Nautical Chart (ENC).

The Canadian Coast Guard broadcasts the virtual AIS AtoN only when a speed restriction is in effect in one or more testing zones.

Mariners must select the virtual AIS AtoN symbol to view a message such as "SectA1 Spd Lim 10 kt." This message refers to a speed restriction in effect for a specific zone.

Note: This system is not the primary method of communicating this information.

COMPLIANCE AND ENFORCEMENT

Vessels must comply with the Interim Orders made pursuant to the *Canada Shipping Act, 2001*, and any NAVWARNs broadcast and published by the Canadian Coast Guard relating to the Interim Orders, aimed at regulating the navigation for the purposes of protecting the North Atlantic right whales.

If a vessel does not comply with the Interim Orders or instructions in the NAVWARNs related to the Interim Orders, the vessel could face:

- administrative monetary penalties up to a maximum of CAN \$250,000; and/or
- penal sanctions under the *Canada Shipping Act, 2001*.

If a vessel appears to have violated the speed restriction, Transport Canada Marine Safety inspectors will review all information provided through AIS and seek an explanation from the master.

No exemptions to the speed restriction will be granted in advance. However, if a deviation from the speed restrictions is necessary for safety reasons, the following information must be entered into the bridge logbook:

- reason(s) for deviation;
- speed at which vessel is operated;
- latitude and longitude at time of deviation;
- time and duration of deviation; and
- master of the vessel shall sign and date the bridge logbook entry.

For any deviation, Transport Canada will review and consider reasons such as:

- navigating to ensure vessel safety;
- weather conditions;
- force majeure (unforeseeable circumstances); and
- responding to emergencies.

REPORT A NORTH ATLANTIC RIGHT WHALE SIGHTING

If you see live, free-swimming whales:

- Call 1-902-440-8611 (local) or 1-844-800-8568 (toll free)
- Email: XMARWhalesightings@dfo-mpo.gc.ca

If you see a North Atlantic right whale that is entangled, injured or dead, please report it to your nearest Canadian Coast Guard Marine Communications and Traffic Services Centre, or call:

Southern part of the Gulf of St. Lawrence

Marine Animal Response Society
Telephone: 1-866-567-6277

Newfoundland and Labrador

Whale Release and Strandings
Telephone: 1-888-895-3003

For the Québec Sector

Marine Mammal Emergencies
Telephone: 1-877-722-5346

Please consult WhaleMap for the latest right whale observations: <https://whalemap.org/>

***406/22 Saguenay–St. Lawrence Marine Park and Surrounding Waters – Whale Protection**

(Recurrent publication of notice *406/22, originally published in the *Notices to Mariners – Monthly Eastern Edition 04/2022* publication.)

The waters in and around the Saguenay–St. Lawrence Marine Park are well known for the resident endangered beluga population and the wide diversity of whales that migrate there to feed, particularly between April and November.

REGULATORY PROTECTION MEASURES

All whale species that are found in the St. Lawrence are protected under the *Marine Mammal Regulations*, pursuant to the *Fisheries Act*. Within the boundaries of the Marine Park, specific measures are set out in the *Marine Activities in the Saguenay–St. Lawrence Marine Park Regulations*, pursuant to the establishment of the *Saguenay–St. Lawrence Marine Park Act*. Any collision with a marine mammal within the Marine Park must immediately be reported to a park warden at 1-866-508-9888. For collisions that occur outside the Marine Park or for any situation involving a marine mammal that is dead or in trouble, contact the emergency network at 1-877-722-5346 or on VHF channel 16.

For more information on the Saguenay–St. Lawrence Marine Park, see notice 5C of the *Notices to Mariners Annual Edition 2022*.

VOLUNTARY PROTECTION MEASURES

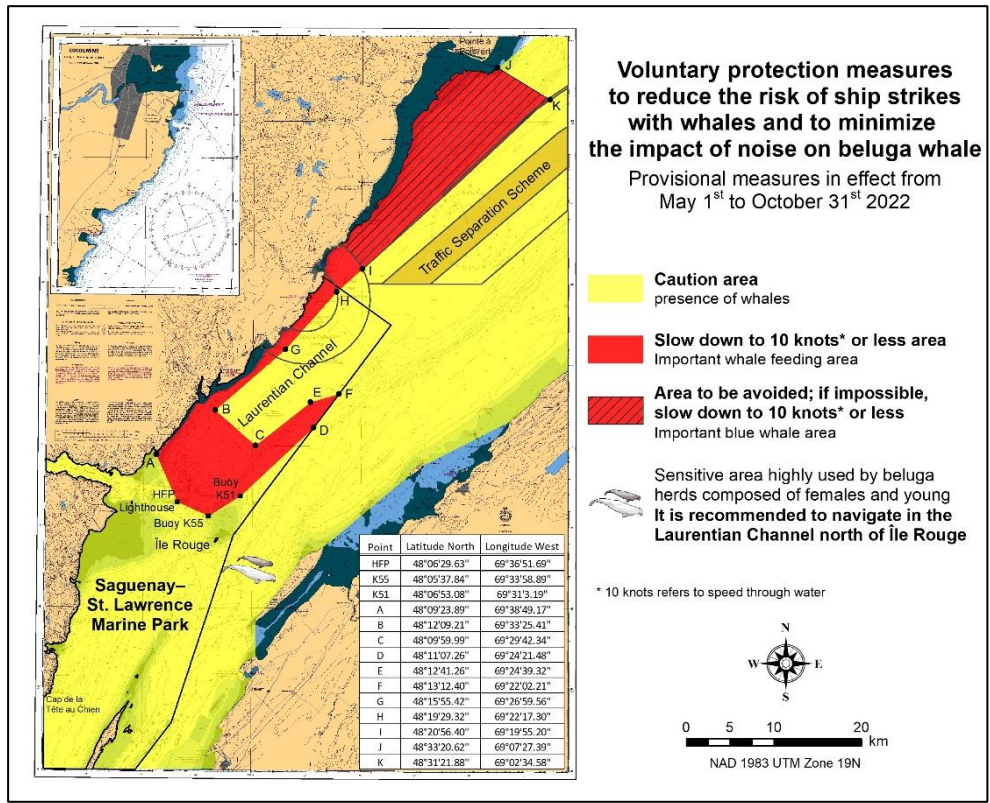
Provisional measures in effect from May 1 to October 31, 2022. See map at the end of this notice.

These measures apply to merchant vessels and cruise ships between Pointe à Boisvert and Cap de la Tête au Chien to prevent collisions with whales. These measures should only be taken when they will not jeopardize navigational safety.

Caution area (yellow area): To reduce the risk of collisions with whales that can be present anywhere in this area, heightened vigilance of navigators is critical. Posting a lookout is recommended in order to increase the chances of seeing the whales and thus taking necessary measures to avoid them. If bypassing the whales is not possible, slow down and wait for the animals to move away to a distance greater than 400 metres (0.215 nautical miles) before resuming original speed. It is more difficult to see the animals at night therefore increased caution is recommended.

Slow down to 10 knots or less area (red area): To reduce the risk of collisions with whales in this feeding area, it is recommended that vessels slow down to a maximum speed through the water of 10 knots and post a lookout. It is further recommended to remain in the Laurentian Channel to the north of Île Rouge to minimize the impact of noise in a sensitive area south of this island, which is highly frequented by herds of beluga whales composed of females and young.

Area to be avoided (hatched red area): To reduce noise and the risk of collisions with whales, vessels should avoid transiting through this area which is highly frequented by blue whales, an endangered species. If the area cannot be avoided, slow down to a speed through the water of 10 knots or less.



***407/22 Saguenay–St. Lawrence Marine Park - Beluga Whale Protection: Slowdown Area at the Mouth of the Saguenay Fjord and Area Closure at Baie Sainte-Marguerite**

(Recurrent publication of notice *407/22, originally published in the *Notices to Mariners – Monthly Eastern Edition 04/2022* publication.)

The Saguenay–St. Lawrence Marine Park and its surrounding area are at the heart of endangered beluga whale critical summer habitat. Marine mammal protection measures have been put in place in accordance with the *Marine Activities in the Saguenay–St. Lawrence Marine Park Regulations* within the limits of the Marine Park.

However, important feeding, calving and rearing areas for beluga whales require greater protection to ensure the recovery of the species. The portion of the Saguenay situated between the mouth of the Fjord and Baie Sainte-Marguerite is one of the areas most used by females and their young from May to October. The mouth of the Saguenay is known as a feeding ground and Baie Sainte-Marguerite as a calving and rearing area.

In order to prevent collisions with beluga whales, a compulsory 15-knot slowdown area is in effect from May 1st to October 31st at the mouth of the Saguenay. To ensure tranquility for female belugas and their young during the critical calving period, access to Baie Sainte-Marguerite is prohibited to all vessels from June 21st to September 21st, except for special authorizations (see description below).

For safety reasons, *the slowdown area measure at the mouth of the Saguenay Fjord does not apply* to cargo ships (see the monthly edition of *Notice to Mariners* from May to October for voluntary protection measures in the St. Lawrence Estuary). An enhanced vigilance is, however, recommended to all navigators between the mouth of the Saguenay Fjord and Baie Sainte-Marguerite for the protection of beluga whales.

For more information on the Saguenay–St. Lawrence Marine Park, see notice 5C of the *Notices to Mariners Annual Edition 2022* or visit marinepark.qc.ca.

REGULATORY PROTECTION MEASURES — BELUGA WHALE

Entire Marine Park Territory:

- When beluga whales are less than half a nautical mile (926 metres) from a motorized vessel, the vessel must maintain a steady speed of between 5 and 10 knots.
- All vessels, including human-powered vessels (kayaks and canoes), must continue to move forward and maintain their heading.
- All vessels must maintain a minimum distance of 400 metres from beluga whales at all times.

For more information concerning the regulations, consult: marinepark.ca/protect/.

Mouth of the Saguenay Fjord (Figure 1) — Slowdown Area (area crosshatched in red):

- Maximum speed at the mouth of the Saguenay between buoys S7 and S8 and the ferry docks between Baie-Sainte-Catherine and Tadoussac is 15 knots from May 1st to October 31st.

Baie Sainte-Marguerite (Figure 2) — Area Closure (red area):

- From June 21st to September 21st, vessels must not enter the red area, which follows a line between Cap Nord-Ouest and Cap Sainte-Marguerite.
- Special authorizations are granted only for kayaks, canoes and recreational fishermen who must travel without stopping along a corridor within 10 metres of the shore or in shallow areas.

VOLUNTARY PROTECTION MEASURES

Baie Sainte-Marguerite sector (Figure 2) — Transit Area (area crosshatched in yellow):

- From June 21st to September 21st, navigation in this area is recommended at a speed of between 5 and 10 knots without stopping.

The purpose of this transit area is to favour respect of the *Marine Activities in the Saguenay–St. Lawrence Marine Park Regulations*, since beluga whales are often present in the Baie Sainte-Marguerite sector.

INFORMATION

All incidents, including collisions with whales, must be reported without delay by calling 1-866-508-9888. For any other situation concerning a marine mammal that is either dead or in trouble, contact the Marine Mammal Emergency Response Network at 1-877-722-5346, or use VHF channel 16.

Figure 1

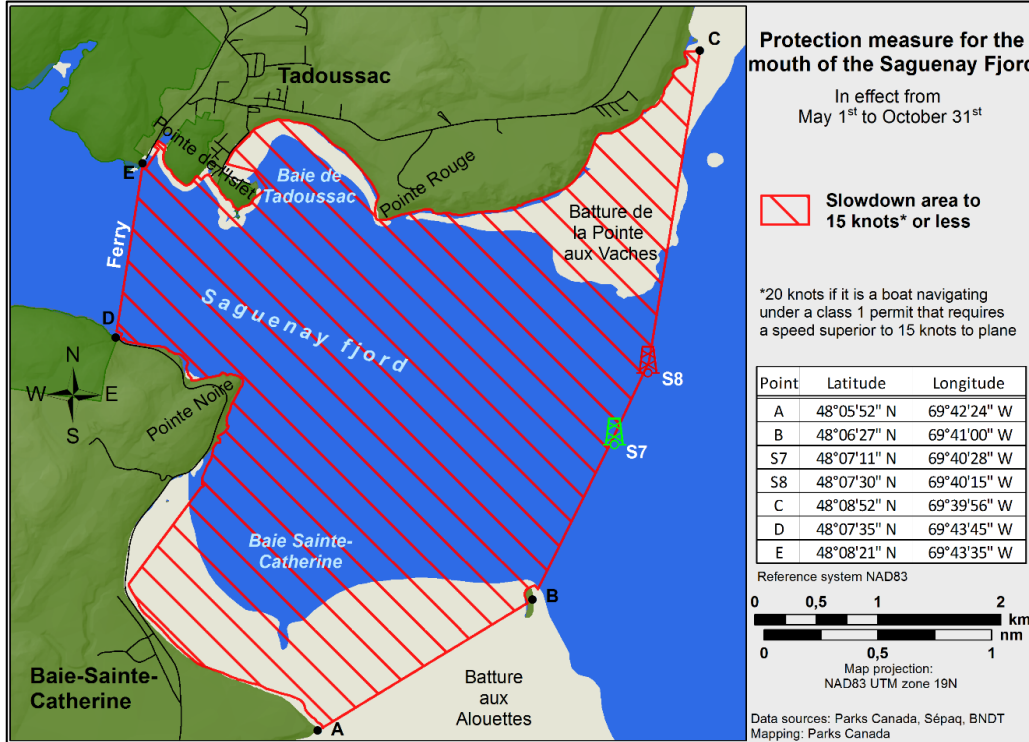
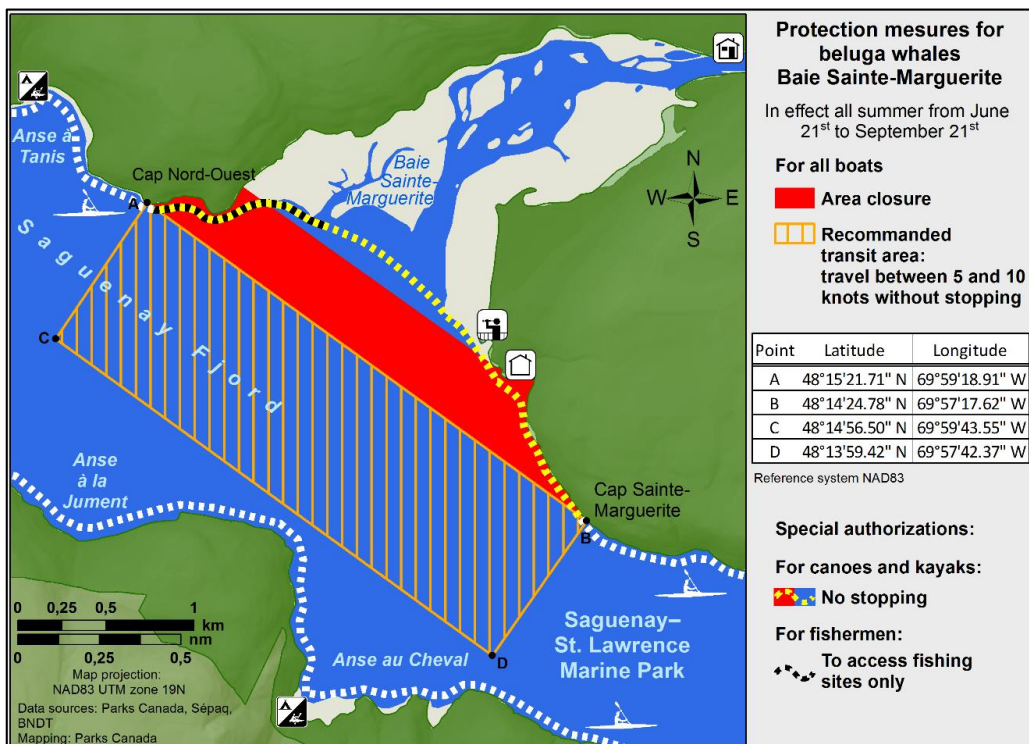


Figure 2



***901/22 Canadian Hydrographic Service – Nautical Charts**

Charts	Main Title	Scale	Published	Cat#	Price
New Charts					
3497	Vancouver Harbour Central Portion/Partie Centrale	1:6 000	2022-09-02	2	\$20.00
New Editions					
1*	Canadian Chart 1 Symbols, Abbreviations and Terms / Carte 1 du Canada Signes conventionnels, abréviations et termes		2022-05-01	N/A	N/A
7578	Pelly Bay	1:125 000	2022-09-30	4	\$20.00
Charts Permanently Withdrawn					
3494	Vancouver Harbour Central Portion/Partie Centrale	Cancelled by 3497			

*The 2022 edition of Chart 1 is available in PDF and HTML at no cost, from [Chart 1 - Symbols, Abbreviations and Terms \(charts.gc.ca\)](https://charts.gc.ca). The references to Chart 1 in Section 2, will be aligned with this New Edition 2022, starting October 1st.

***902/22 Canadian Hydrographic Service – Electronic Navigational Charts**

S-57 ENC Number	Chart Title	ENC Compilation Scale	Published
New Charts			
CA473540 (Edn 1.000)	Kangeeak Point and Approches / et les approches	1:25 000	2022-09-23
CA571122 (Edn 1.000)	CA571122	1:11 000	2022-09-16
CA571123 (Edn 1.000)	CA571123	1:11 000	2022-09-16
CA571124 (Edn 1.000)	CA571124	1:11 000	2022-09-16
CA571125 (Edn 1.000)	CA571125	1:11 000	2022-09-16
CA571126 (Edn 1.000)	CA571126	1:11 000	2022-09-16
CA571127 (Edn 1.000)	CA571127	1:11 000	2022-09-16
CA571128 (Edn 1.000)	CA571128	1:11 000	2022-09-16
CA571129 (Edn 1.000)	CA571129	1:11 000	2022-09-16
CA572008 (Edn 1.000)	Jenny Lind	1:11 000	2022-09-09
New Editions			
CA271032 (Edn 3.000)	Hecate Strait	1:700 000	2022-09-16
CA376596 (Edn 6.000)	Domino Point to Cape North	1:37 500	2022-09-02
CA379029 (Edn 9.000)	Cap de la Tête au Chien à/to Cap aux Oies	1:40 000	2022-09-16
CA379232 (Edn 3.000)	Île du Bic au/to Cap de la Tête au Chien	1:40 000	2022-09-16
CA470075 (Edn 12.000)	Race Rocks to/à D'Arcy Island	1:20 000	2022-09-23
CA470338 (Edn 8.000)	Barkley Sound (Part 2 of 2)	1:20 000	2022-09-30
CA471012 (Edn 2.000)	Masset Harbour and/et Naden Harbour	1:180 000	2022-09-16
CA479020 (Edn 13.000)	Québec à/to Donnacona	1:20 000	2022-09-16
CA479025 (Edn 13.000)	Sault-au-Cochon à/to Québec	1:25 000	2022-09-16
CA479053 (Edn 7.000)	Tadoussac à/to Cap Éternité	1:18 750	2022-09-16
CA479078 (Edn 7.000)	Cap Éternité à/to Cap à l'Est	1:18 750	2022-09-16

S-57 ENC Number	Chart Title	ENC Compilation Scale	Published
CA479082 (Edn 12.000)	Continuation A - Sault-au-Cochon à/to Québec	1:25 000	2022-09-16
CA479087 (Edn 7.000)	Ile St-Louis à Cap Éternité - Continuation A	1:18 750	2022-09-16
CA479094 (Edn 10.000)	Cap à l'Est à Saint-Fulgence - Continuation A	1:18 750	2022-09-16
CA570228 (Edn 5.000)	Uchucklesit Inlet	1:9 000	2022-09-02
CA570229 (Edn 3.000)	Fatty Basin	1:3 750	2022-09-02
CA570297 (Edn 12.000)	Roberts Bank	1:10 000	2022-09-09
CA576269 (Edn 4.000)	Shippegan Harbour	1:10 000	2022-09-16
CA579001 (Edn 14.000)	Port de Montréal - Repentigny à/to Montréal Est	1:7 500	2022-09-09
CA579056 (Edn 6.000)	Les Méchins	1:6 000	2022-09-30
CA579081 (Edn 9.000)	Port de Québec - Continuation A	1:7 500	2022-09-16
CA579224 (Edn 7.000)	Mouillage St-Nicolas	1:10 000	2022-09-16
CA579227 (Edn 2.000)	Canal de la Rive Sud	1:10 000	2022-09-09

***903/22 Canadian Hydrographic Service – Raster Digital Charts (BSB V3)**

Charts	Main Title	Scale	Published
Charts Permanently Withdrawn			
RM-3494	Vancouver Harbour Central Portion/Partie Centrale	Cancelled by RM-3497	

***904/22 Transport Canada – Ship Safety Bulletin #02 and #18/2021 and #10/2022**

Updated **Ship Safety Bulletins** have recently been posted on the [Transport Canada website](#).

To view or download these bulletins, please click on the links below:

[SSB#02/2021](#) – Request for notification of any person or crew member on board that has a serious illness or any COVID-19 symptoms (modified August 12, 2022)
RDIMS# 18811185

[SSB#18/2021](#) – Measures to Support Safe Cruise Travel in Canada (modified September 8, 2022)
RDIMS# 18638891

[SSB#10/2022](#) – New environmental measures for cruise ships in waters under Canadian jurisdiction – 2022 season (modified August 18, 2022)
RDIMS# 18490623

Sign up for [e-Bulletin](#) to receive an e-mail notice each time a new Ship Safety Bulletin is published on our website.

Contact us at marinesafety-securitemaritime@tc.gc.ca or 1-855-859-3123 (Toll Free).

***906/22 Lake Ontario/Lac Ontario (Western Portion/Partie Ouest) – Unlit Buoy Permanently Established**

Reference chart: 2077

The following unlit buoy has been permanently established:

Aid Name	LL #	Position
Grimsby Small Arms Range buoy B12	7538.52	43° 14' 41.6"N 079° 36' 23.4"W

(B2022-017)

***907/22 Pointe aux Pins to/à Point Pelee – Unlit Buoy Permanently Established**

Reference chart: 2122

The following unlit buoy has been permanently established:

Aid Name	LL #	Position
Cedar Springs Small Arms Range spar buoy C1	7177.05	42° 15' 42.8"N 082° 01' 28.5"W

(B2022-046)

***908/22 Plans Baie des Chaleurs / Chaleur Bay - Côte sud / South Shore – Unlit Buoys Repositioned**

Reference chart: 4920

The following unlit buoys have been repositioned:

Aid Name	LL #	Position
Shippegan Gully buoy TJ50	6261.7	47° 44' 09.4"N 064° 40' 47.8"W
Shippegan Channel buoy EG30	6291.3	47° 44' 44.4"N 064° 41' 59.3"W

(G2022-098, 100)

***909/22 Hardie Island to/à Fort Good Hope Kilometre 1040 / Kilometre 1100 – Daybeacon Permanently Discontinued**

Reference chart: 6421

The following daybeacon has been permanently discontinued:

Aid Name	LL #	Position
Mile 665.1 port daybeacon	3953.6	66° 04' 27.0"N 129° 04' 28.0"W

(A2022-012)

Section 1A: Temporary and Preliminary Notices

Reminder – Comment Period for Active Preliminary Notices

This is a reminder that the comment period is still open for the following active Preliminary notices:

Notice #	Reference Chart #	Aids Affected (LL #)	Intent of Notice
Newfoundland and Labrador Coast			
706(P)/22	4821	326	Notice of Proposed Changes
707(P)/22	4847	494	Notice of Proposed Changes
708(P)/22	4858	430	Notice of Proposed Changes
Atlantic Coast			
710(P)/22	4460	993	Notice of Proposed Changes
711(P)/22	4466	983.5, 6001	Aids to navigation to be Discontinued
812(P)/22	4203	522.1	Aid to Navigation to be Discontinued
Inland Waters			
814(P)/22	6035	9327	Unlit Buoy to be Discontinued
815(P)/22	6037	1442, 1443	Range Lights to be Discontinued
Other Preliminary Notices			
816(P)/22		N/A	Raster Navigational Charts to be Discontinued

Please refer to the [Notices to Mariners - Monthly Summary of Temporary and Preliminary Notices](#) publication for details.

Newfoundland and Labrador Coast

No notices applicable for this edition.

Atlantic Coast

No notices applicable for this edition.

Inland Waters

Temporary Notices

*910(T)/22 Smith Falls to/à Kingston including/y compris Tay River to/à Perth – Construction Operations Completed

Reference: Notice 908(T)/20 is cancelled.

Construction operations are now complete and no longer affect traffic in the navigation channel.

Preliminary Notices

Central Region

Comment Submission

Comments on proposed changes in preliminary (P) notices are solicited from mariners and other interested parties within three months of the initial publication date. Following this date, the notices will be cancelled. Any objections raised must state the facts on which they are based and should include supporting information on safety, commerce and public benefit.

Comments should be directed to the following:

Superintendent, Mathieu Roy
Aids to Navigation & Waterways
Canadian Coast Guard, Central Region
1550 D'Estimauville Avenue
Québec, QC G1J 5E9
Telephone: (418) 648-7450
Email: mathieu.roy@dfo-mpo.gc.ca

***911(P)/22 Britannia Bay à/to Chats Falls – Aid to Navigation to be Discontinued**

Reference chart: 1550

The Canadian Coast Guard proposes to permanently discontinue the following aid to navigation:

Aid Name	LL #	Position
Aylmer Island	1299	45° 23' 50.4"N 075° 53' 18.8"W

Initial publication date: Friday, September 30, 2022

Comment submission deadline: Thursday, December 29, 2022

(B2022-088)

Other (T) & (P) Notices

Temporary Notices

No notices applicable for this edition.

Preliminary Notices

***912(P)/22 Canadian Coast Guard – Differential Global Positioning System (DGPS) in Canada**

On December 15th, 2022, the Canadian Coast Guard will permanently discontinue the provision of its DGPS service across Canada.

Discontinuing this service aligns with Coast Guard's efforts to modernize marine navigation services and find alternatives to aging DGPS infrastructures.

Today's GPS meets the needs of international Position, Navigation and Timing (PNT) requirements. Further, for mariners in Canadian waters, there is no carriage requirement for ground- or space-based augmentation capability onboard vessels for Global Navigation Satellite Systems (GNSS).

Modern GNSS receivers can use the Wide Area Augmentation System (WAAS) as a viable alternative to DGPS. Coast Guard's technical review of PNT solutions for Canada, and a study of the performance of WAAS found coverage to be excellent throughout Canada, including up to 72' north latitude in the Arctic.

Section 2: Chart Corrections

1230 - Les Méchins - New Edition - 19-FEB-2010 - NAD 1983

30-SEP-2022

LNMD. 17-JUN-2022

Add	depth of 4 metres 5 decimetres (See Chart No. 1, I10) This notice affects Electronic Navigational Chart: CA579056	49°00'26.3"N 066°58'28.2"W	<i>DFO(6410681-01)</i>
Delete	depth of 4 metres 2 decimetres (See Chart No. 1, I10) This notice affects Electronic Navigational Chart: CA579056	49°00'23.4"N 066°58'41.1"W	<i>DFO(6410681-02)</i>
Add	depth of 3 metres 6 decimetres (See Chart No. 1, I10) This notice affects Electronic Navigational Chart: CA579056	49°00'23.1"N 066°58'41.5"W	<i>DFO(6410681-03)</i>
Add	depth of 5 metres 6 decimetres (See Chart No. 1, I10) This notice affects Electronic Navigational Chart: CA579056	49°00'20.1"N 066°58'39.0"W	<i>DFO(6410681-04)</i>

1310 - Section A-B - New Edition - 07-JUN-2019 - NAD 1983

02-SEP-2022

LNMD. 22-JUL-2022

Delete	limits of maintained area (See Chart No. 1, I20) This notice affects Electronic Navigational Chart: CA579001	between 45°37'57.8"N 073°29'25.8"W and 45°37'59.1"N 073°29'24.4"W	<i>DFO(6410617-01)</i>
Add	limits of maintained area (See Chart No. 1, I20) This notice affects Electronic Navigational Chart: CA579001	between 45°37'57.5"N 073°29'25.4"W and 45°37'59.4"N 073°29'23.4"W	<i>DFO(6410617-02)</i>
Add	limits of maintained area (See Chart No. 1, I20) This notice affects Electronic Navigational Chart: CA579001	between 45°37'48.8"N 073°29'34.6"W and 45°37'46.6"N 073°29'27.7"W	<i>DFO(6410617-03)</i>
Add	maintained depth of 10,8 m (See Chart No. 1, I23) This notice affects Electronic Navigational Chart: CA579001	45°37'52.5"N 073°29'27.0"W	<i>DFO(6410617-04)</i>
Delete	depth of 7 metres 0 decimetres (See Chart No. 1, I10) This notice affects Electronic Navigational Chart: CA579001	45°42'06.3"N 073°26'46.0"W	<i>DFO(6410617-05)</i>
Add	depth of 6 metres 3 decimetres (See Chart No. 1, I10) This notice affects Electronic Navigational Chart: CA579001	45°42'06.9"N 073°26'46.0"W	<i>DFO(6410617-06)</i>

1310 - Section B-C - New Edition - 07-JUN-2019 - NAD 1983

02-SEP-2022

LNMD. 22-JUL-2022

Delete	depth of 9 metres 2 decimetres (See Chart No. 1, I10) This notice affects Electronic Navigational Chart: CA579080	45°36'29.9"N 073°30'23.3"W <i>DFO(6410573-01)</i>
Add	depth of 8 metres 9 decimetres (See Chart No. 1, I10) This notice affects Electronic Navigational Chart: CA579080	45°36'30.1"N 073°30'23.3"W <i>DFO(6410573-02)</i>
Delete	limits of maintained area (See Chart No. 1, I20) This notice affects Electronic Navigational Chart: CA579001	between 45°37'57.8"N 073°29'25.8"W and 45°37'59.1"N 073°29'24.4"W <i>DFO(6410617-01)</i>
Add	limits of maintained area (See Chart No. 1, I20) This notice affects Electronic Navigational Chart: CA579001	between 45°37'57.5"N 073°29'25.4"W and 45°37'59.4"N 073°29'23.4"W <i>DFO(6410617-02)</i>
Add	limits of maintained area (See Chart No. 1, I20) This notice affects Electronic Navigational Chart: CA579001	between 45°37'48.8"N 073°29'34.6"W and 45°37'46.6"N 073°29'27.7"W <i>DFO(6410617-03)</i>
Add	maintained depth of 10,8 m (See Chart No. 1, I23) This notice affects Electronic Navigational Chart: CA579001	45°37'52.5"N 073°29'26.7"W <i>DFO(6410617-04)</i>
Amend	maintained depth of 10,7 m to read 10,8 m (See Chart No. 1, I23) This notice affects Electronic Navigational Chart: CA579080	45°33'54.8"N 073°30'53.6"W <i>DFO(6410618-01)</i>
Add	crib with depth of 6 metres 0 decimetres (See Chart No. 1, Fb, Ka) This notice affects Electronic Navigational Chart: CA579080	45°35'02.7"N 073°29'52.5"W <i>DFO(6410618-02)</i>
Delete	seaplane landing area (See Chart No. 1, N13) This notice affects Electronic Navigational Chart: CA579080	joining 45°31'15.5"N 073°32'26.5"W 45°31'15.4"N 073°32'24.4"W 45°30'50.2"N 073°32'26.5"W and 45°30'50.3"N 073°32'28.6"W <i>DFO(6410618-03)</i>
Delete	seaplane landing area (See Chart No. 1, N13) This notice affects Electronic Navigational Chart: CA579080	joining 45°31'19.5"N 073°32'24.1"W 45°31'19.6"N 073°32'26.2"W 45°31'31.1"N 073°32'25.2"W 45°32'02.1"N 073°31'59.4"W 45°32'01.4"N 073°31'57.7"W and 45°31'30.9"N 073°32'23.1"W <i>DFO(6410618-04)</i>
Add	limits of maintained area (See Chart No. 1, I20) This notice affects Electronic Navigational Chart: CA579080	between 45°36'35.9"N 073°30'20.5"W and 45°36'32.0"N 073°30'14.5"W <i>DFO(6410619-01)</i>

Add	maintained depth of 10,8 m (See Chart No. 1, I23) This notice affects Electronic Navigational Chart: CA579080	45°36'01.5"N 073°30'20.0"W	
			<i>DFO(6410619-02)</i>
1315 - Québec à/to Donnacona - New Edition - 24-MAY-2019 - NAD 1983			
	16-SEP-2022		LNМ/D. 15-OCT-2021
Amend	FIR 5s8m16M to read FIR 5s11m10M against light (See Chart No. 1, P16, P65) This notice affects Electronic Navigational Chart: CA479020, CA579003	46°46'19.4"N 071°14'35.9"W	
			<i>(Q2022030) LL(1962) DFO(6410685-01)</i>
1316 - Port de Québec - New Edition - 03-APR-2020 - NAD 1983			
	09-SEP-2022		LNМ/D. 06-MAY-2022
Delete	depth of 2 metres 8 decimetres (See Chart No. 1, I10) This notice affects Electronic Navigational Chart: CA579003	46°50'44.2"N 071°10'15.6"W	
			<i>DFO(6410667-06)</i>
Add	depth of 1 metre 6 decimetres (See Chart No. 1, I10) This notice affects Electronic Navigational Chart: CA579003	46°50'45.3"N 071°10'16.0"W	
			<i>DFO(6410667-07)</i>
	16-SEP-2022		LNМ/D. 09-SEP-2022
Amend	FIR 5s8m16M to read FIR 5s11m10M against light (See Chart No. 1, P16, P65) This notice affects Electronic Navigational Chart: CA479020, CA579003	46°46'19.4"N 071°14'35.9"W	
			<i>(Q2022030) LL(1962) DFO(6410685-01)</i>
1317 - Sault-au-Cochon à/to Québec - New Edition - 03-APR-2020 - NAD 1983			
	09-SEP-2022		LNМ/D. 19-FEB-2021
Delete	depth of 1 metre 9 decimetres (See Chart No. 1, I10) This notice affects Electronic Navigational Chart: CA479025	47°03'24.9"N 070°42'30.8"W	
			<i>DFO(6410667-01)</i>
Add	depth of 1 metre 6 decimetres (See Chart No. 1, I10) This notice affects Electronic Navigational Chart: CA479025	47°03'28.1"N 070°42'30.6"W	
			<i>DFO(6410667-02)</i>
Delete	depth of 8 metres 5 decimetres (See Chart No. 1, I10) This notice affects Electronic Navigational Chart: CA479025	47°08'55.1"N 070°40'34.5"W	
			<i>DFO(6410667-04)</i>
Add	depth of 5 metres 9 decimetres (See Chart No. 1, I10) This notice affects Electronic Navigational Chart: CA479025	47°08'54.7"N 070°40'35.5"W	
			<i>DFO(6410667-05)</i>

1429 - Canal de la Rive Sud - New Chart - 09-APR-2010 - NAD 1983
02-SEP-2022

LNM/D. 27-MAR-2020

Delete	depth of 6 metres 6 decimetres (See Chart No. 1, I10) This notice affects Electronic Navigational Chart: CA579227	45°29'10.9"N 073°30'50.1"W <i>DFO(6410618-05)</i>
Add	depth of 5 metres 5 decimetres (See Chart No. 1, I10) This notice affects Electronic Navigational Chart: CA579227	45°29'11.1"N 073°30'49.2"W <i>DFO(6410618-06)</i>
Add	depth of 6 metres 9 decimetres (See Chart No. 1, I10) This notice affects Electronic Navigational Chart: CA579227	45°24'27.4"N 073°33'35.5"W <i>DFO(6410619-03)</i>
Delete	depth of 6 metres 8 decimetres (See Chart No. 1, I10) This notice affects Electronic Navigational Chart: CA579227	45°24'24.5"N 073°33'05.8"W <i>DFO(6410619-04)</i>
Add	depth of 6 metres 5 decimetres (See Chart No. 1, I10) This notice affects Electronic Navigational Chart: CA579227	45°24'24.4"N 073°33'06.6"W <i>DFO(6410619-05)</i>
Delete	depth of 5 metres 8 decimetres (See Chart No. 1, I10)	45°24'26.2"N 073°32'44.2"W <i>DFO(6410693-01)</i>
Add	depth of 4 metres 9 decimetres (See Chart No. 1, I10) This notice affects Electronic Navigational Chart: CA579227	45°24'25.9"N 073°32'44.0"W <i>DFO(6410693-02)</i>
Delete	depth of 6 metres 3 decimetres (See Chart No. 1, I10) This notice affects Electronic Navigational Chart: CA579227	45°26'23.5"N 073°29'56.8"W <i>DFO(6410703-01)</i>
Add	depth of 5 metres 8 decimetres (See Chart No. 1, I10) This notice affects Electronic Navigational Chart: CA579227	45°26'24.4"N 073°29'56.1"W <i>DFO(6410703-02)</i>
Delete	depth of 6 metres 2 decimetres (See Chart No. 1, I10) This notice affects Electronic Navigational Chart: CA579227	45°26'15.6"N 073°29'57.1"W <i>DFO(6410703-03)</i>
Add	depth of 5 metres 5 decimetres (See Chart No. 1, I10) This notice affects Electronic Navigational Chart: CA579227	45°26'15.5"N 073°29'57.9"W <i>DFO(6410703-04)</i>

2100 - Lake Erie / Lac Érié - New Edition - 25-DEC-1998 - NAD 1983

02-SEP-2022

LNMD. 04-MAY-2018

Delete radar transponder beacon marked Racon
(See Chart No. 1, S3.1/S3.4)
This notice affects Electronic Navigational Chart: CA273094, CA373089
41°49'32.2"N 083°11'36.0"W
(USCG:45/21) DFO(6604892-01)

2123 - Pelee Passage to/à la Detroit River - New Edition - 27-JAN-2006 - NAD 1983

02-SEP-2022

LNMD. 13-MAY-2022

Delete radar transponder beacon marked Racon
(See Chart No. 1, S3.1/S3.4)
This notice affects Electronic Navigational Chart: CA273094, CA373089
41°49'30.0"N 083°11'36.0"W
(USCG:45/21) DFO(6604892-01)

2224 - Rose Island Channel - New Chart - 02-JUN-2006 - NAD 1983

09-SEP-2022

LNMD. 08-JUL-2022

Reposition green port hand spar buoy, marked CT3
(See Chart No. 1, Qg)
This notice affects Electronic Navigational Chart: CA573308
from 45°19'35.6"N 080°11'29.9"W
to 45°19'36.3"N 080°11'30.1"W
(D2022025) DFO(6604931-01)

2302 - St. Ignace Island to/à Passage Island - New Edition - 02-AUG-1985 - US Standard Datum

16-SEP-2022

LNMD. 15-MAY-2020

Delete depth of 23 fathoms
(See Chart No. 1, I10)
48°39'50.8"N 088°07'39.3"W
DFO(6604890-01)

Delete depth of 11 fathoms
(See Chart No. 1, I10)
48°39'56.4"N 088°07'35.0"W
DFO(6604890-02)

Add wreck WK with known depth of 13 fathoms
(See Chart No. 1, K26)
This notice affects Electronic Navigational Chart: CA373291
48°39'52.4"N 088°07'39.4"W
DFO(6604890-03)

2312 - Nipigon Bay and Approaches/et les approches - New Edition - 31-MAY-2002 - NAD 1983

16-SEP-2022

LNMD. 15-MAY-2020

Delete depth of 23 fathoms
(See Chart No. 1, I10)
48°39'50.1"N 088°07'39.6"W
DFO(6604890-01)

Delete depth of 10 fathoms 5 feet
(See Chart No. 1, I10)
48°39'55.2"N 088°07'33.9"W
DFO(6604890-02)

Add wreck WK with known depth of 13 fathoms
(See Chart No. 1, K26)
This notice affects Electronic Navigational Chart: CA373291
48°39'52.4"N 088°07'39.4"W
DFO(6604890-03)

2314 - Port of Thunder Bay - New Edition - 02-NOV-2018 - World Geodetic System 1984
16-SEP-2022

LNMD. 26-APR-2019

Reposition red starboard hand spar buoy, marked A14 from 48°21'19.9"N 089°13'02.0"W
(See Chart No. 1, Qf) to 48°21'19.0"N 089°13'02.0"W
This notice affects Electronic Navigational Chart: CA573253

DFO(6604933-01)

Add stump awash, Rep (2022) 48°26'15.7"N 089°12'18.5"W
(See Chart No. 1, K43.1, Kb)
This notice affects Electronic Navigational Chart: CA573253

DFO(6604933-02)

4266 - International Piers - New Edition - 28-FEB-2014 - NAD 1983
02-SEP-2022

LNMD. 27-MAY-2022

Delete depth of 11.8 metres 46°09'58.4"N 060°12'09.7"W
(See Chart No. 1, I10)
This notice affects Electronic Navigational Chart: CA576095

DFO(6310228-18)

Add depth of 11.5 metres 46°09'58.8"N 060°12'09.4"W
(See Chart No. 1, I10)
This notice affects Electronic Navigational Chart: CA576095

DFO(6310228-19)

Add depth of 5.9 metres 46°09'42.7"N 060°12'04.0"W
(See Chart No. 1, I10)
This notice affects Electronic Navigational Chart: CA576095

DFO(6310228-20)

Add depth of 7.4 metres 46°09'37.1"N 060°12'04.5"W
(See Chart No. 1, I10)
This notice affects Electronic Navigational Chart: CA576095

DFO(6310228-21)

Delete depth of 10.8 metres 46°09'38.4"N 060°12'04.6"W
(See Chart No. 1, I10)
This notice affects Electronic Navigational Chart: CA576095

DFO(6310228-22)

Add depth of 7.2 metres 46°09'38.7"N 060°12'04.3"W
(See Chart No. 1, I10)
This notice affects Electronic Navigational Chart: CA576095

DFO(6310228-23)

4266 - Sydney Harbour - New Edition - 28-FEB-2014 - NAD 1983
02-SEP-2022

LNMD. 27-MAY-2022

Delete depth of 16.5 metres 46°14'10.7"N 060°11'52.9"W
(See Chart No. 1, I10)
This notice affects Electronic Navigational Chart: CA576095

DFO(6310228-02)

Add depth of 15.5 metres 46°14'10.8"N 060°11'53.7"W
(See Chart No. 1, I10)
This notice affects Electronic Navigational Chart: CA576095

DFO(6310228-03)

Replace	depth of 11.4 metres with depth of 11.1 metres (See Chart No. 1, I10) This notice affects Electronic Navigational Chart: CA576095	46°13'39.2"N 060°12'34.3"W <i>DFO(6310228-05)</i>
Add	depth of 11.1 metres (See Chart No. 1, I10) This notice affects Electronic Navigational Chart: CA576095	46°10'44.2"N 060°13'06.3"W <i>DFO(6310228-07)</i>
Delete	depth of 14.1 metres (See Chart No. 1, I10) This notice affects Electronic Navigational Chart: CA576095	46°10'20.1"N 060°12'58.4"W <i>DFO(6310228-08)</i>
Add	depth of 13.8 metres (See Chart No. 1, I10) This notice affects Electronic Navigational Chart: CA576095	46°10'18.8"N 060°12'58.1"W <i>DFO(6310228-09)</i>
Replace	depth of 4.6 metres with depth of 4 metres (See Chart No. 1, I10) This notice affects Electronic Navigational Chart: CA576095	46°09'50.9"N 060°12'58.2"W <i>DFO(6310228-11)</i>
Replace	depth of 8 metres with depth of 7.4 metres (See Chart No. 1, I10) This notice affects Electronic Navigational Chart: CA576095	46°09'47.6"N 060°12'56.4"W <i>DFO(6310228-13)</i>
Delete	depth of 4.5 metres (See Chart No. 1, I10) This notice affects Electronic Navigational Chart: CA576095	46°09'40.3"N 060°12'56.7"W <i>DFO(6310228-14)</i>
Add	depth of 3.7 metres (See Chart No. 1, I10) This notice affects Electronic Navigational Chart: CA576095	46°09'39.8"N 060°12'57.0"W <i>DFO(6310228-15)</i>
Delete	depth of 14 metres (See Chart No. 1, I10) This notice affects Electronic Navigational Chart: CA576095	46°08'46.7"N 060°12'36.4"W <i>DFO(6310228-16)</i>
Add	depth of 13.1 metres (See Chart No. 1, I10) This notice affects Electronic Navigational Chart: CA576095	46°08'46.4"N 060°12'37.1"W <i>DFO(6310228-17)</i>
Delete	depth of 11.8 metres (See Chart No. 1, I10) This notice affects Electronic Navigational Chart: CA576095	46°09'58.4"N 060°12'09.7"W <i>DFO(6310228-18)</i>
Add	depth of 11.5 metres (See Chart No. 1, I10) This notice affects Electronic Navigational Chart: CA576095	46°09'58.8"N 060°12'09.4"W <i>DFO(6310228-19)</i>

4266 - Sydney Wharves / Quais - New Edition - 28-FEB-2014 - NAD 1983
02-SEP-2022

LNМ/D. 27-MAY-2022

Add depth of 3.8 metres
(See Chart No. 1, I10)
This notice affects Electronic Navigational Chart: CA576095

46°08'21.8"N 060°11'53.1"W

DFO(6310228-24)

Add depth of 4.1 metres
(See Chart No. 1, I10)
This notice affects Electronic Navigational Chart: CA576095

46°08'21.0"N 060°11'51.5"W

DFO(6310228-25)

Add depth of 5.7 metres
(See Chart No. 1, I10)
This notice affects Electronic Navigational Chart: CA576095

46°08'19.9"N 060°11'53.7"W

DFO(6310228-26)

4277 - Entrance to/Entrée à Great Bras D'Or - New Edition - 29-DEC-2017 - NAD 1983
30-SEP-2022

LNМ/D. 21-JAN-2022

Add depth of 16.4 metres
(See Chart No. 1, I10)
This notice affects Electronic Navigational Chart: CA576064

46°17'35.8"N 060°24'44.0"W

DFO(6310316-01)

4367 - Flint Island to / à Cape Smokey - New Edition - 03-APR-2003 - NAD 1983
02-SEP-2022

LNМ/D. 29-JUL-2022

Add depth of 6 fathoms, 1 foot
(See Chart No. 1, I10)
This notice affects Electronic Navigational Chart: CA376093

46°10'44.2"N 060°13'06.3"W

DFO(6310228-27)

Add depth of 7 fathoms, 3 feet
(See Chart No. 1, I10)
This notice affects Electronic Navigational Chart: CA376093

46°10'18.8"N 060°12'58.1"W

DFO(6310228-28)

Delete depth of 7 fathoms, 5 feet
(See Chart No. 1, I10)
This notice affects Electronic Navigational Chart: CA376093

46°12'01.9"N 060°13'15.1"W

DFO(6310228-29)

Add depth of 7 fathoms, 3 feet
(See Chart No. 1, I10)
This notice affects Electronic Navigational Chart: CA376093

46°12'04.4"N 060°13'16.3"W

DFO(6310228-30)

4379 - Liverpool Harbour - New Edition - 18-JUL-2003 - NAD 1983
30-SEP-2022

LNМ/D. 22-APR-2022

Replace red starboard hand lighted pillar buoy Q R, marked UM58 with
red starboard hand lighted spar buoy FI R, marked UM58
(See Chart No. 1, Qf)

44°02'47.3"N 064°42'26.4"W

LL(410.5) DFO(6310319-01)

4419 - Souris Harbour - New Edition - 22-NOV-2002 - NAD 1983
23-SEP-2022

		LNMD. 01-OCT-2021
Replace	depth of 24 feet with depth of 22 feet (See Chart No. 1, I10)	46°20'46.5"N 062°15'17.3"W <i>DFO(6310308-01)</i>
Add	depth of 15 feet (See Chart No. 1, I10)	46°20'52.7"N 062°15'20.2"W <i>DFO(6310308-02)</i>
Add	depth of 6 feet (See Chart No. 1, I10)	46°20'51.9"N 062°15'18.2"W <i>DFO(6310308-03)</i>
Add	depth of 16 feet (See Chart No. 1, I10)	46°20'52.1"N 062°15'14.7"W <i>DFO(6310308-04)</i>
Delete	depth of 16 feet (See Chart No. 1, I10)	46°20'54.8"N 062°15'07.2"W <i>DFO(6310308-05)</i>
Add	depth of 15 feet (See Chart No. 1, I10)	46°20'54.7"N 062°15'07.0"W <i>DFO(6310308-06)</i>

4419 - Souris Harbour and Approaches / et les approches - New Edition - 22-NOV-2002 - NAD 1983
23-SEP-2022

		LNMD. 01-OCT-2021
Delete	depth of 33 feet (See Chart No. 1, I10)	46°20'43.8"N 062°15'25.1"W <i>DFO(6310308-07)</i>
Add	depth of 32 feet (See Chart No. 1, I10)	46°20'43.2"N 062°15'25.3"W <i>DFO(6310308-08)</i>
Add	depth of 33 feet (See Chart No. 1, I10)	46°20'41.4"N 062°15'22.3"W <i>DFO(6310308-09)</i>
Delete	depth of 56 feet (See Chart No. 1, I10)	46°20'07.9"N 062°15'32.3"W <i>DFO(6310308-10)</i>
Add	depth of 54 feet (See Chart No. 1, I10)	46°20'08.7"N 062°15'30.3"W <i>DFO(6310308-11)</i>
Add	depth of 66 feet (See Chart No. 1, I10)	46°19'46.4"N 062°15'20.3"W <i>DFO(6310308-19)</i>

4440 - Îles Sainte-Marie à/to Île à la Brume - New Edition - 19-JUL-2013 - NAD 1983

02-SEP-2022

LNMD. 03-MAY-2019

- Add a magenta limit joining 50°04'00.0"N 060°00'00.0"W
50°04'00.0"N 059°30'00.0"W
50°20'42.0"N 059°30'00.0"W
50°20'42.0"N 060°00'00.0"W
and 50°04'00.0"N 060°00'00.0"W
DFO(6410596-01)
- Add UTILISER LA CARTE 4468 À L'INTÉRIEUR DE CETTE LIMITE USE
CHART 4468 INSIDE THIS LIMIT Voir note ATTENTION / See note
WARNING 50°10'30.0"N 059°59'00.0"W
DFO(6410596-02)
- Add UTILISER LA CARTE 4468 À L'INTÉRIEUR DE CETTE LIMITE USE
CHART 4468 INSIDE THIS LIMIT Voir note ATTENTION / See note
WARNING 50°04'30.0"N 059°52'00.0"W
DFO(6410596-03)
- Add UTILISER LA CARTE 4468 À L'INTÉRIEUR DE CETTE LIMITE USE
CHART 4468 INSIDE THIS LIMIT Voir note ATTENTION / See note
WARNING 50°11'00.0"N 059°31'00.0"W
DFO(6410596-04)
- Add UTILISER LA CARTE 4468 À L'INTÉRIEUR DE CETTE LIMITE USE
CHART 4468 INSIDE THIS LIMIT Voir note ATTENTION / See note
WARNING 50°20'00.0"N 059°35'00.0"W
DFO(6410596-05)
- Add WARNING To navigate within the area outlined in magenta, the
referenced chart must be used. This area will no longer be maintained
from Notice to Mariners. ATTENTION Pour naviguer à l'intérieur de la
zone délimitée en magenta, il faut utiliser la carte indiquée. Cette zone
ne sera plus tenue à jour au moyen des Avis aux navigateurs. 50°18'00.0"N 059°57'00.0"W
DFO(6410596-06)

4459 - Summerside Harbour - New Edition - 29-MAY-2020 - NAD 1983

16-SEP-2022

LNMD. 21-MAY-2021

- Affix patch 46°23'13.0"N 063°47'20.7"W
Download Patch - https://www.notmar.gc.ca/chsftp/patches/4459_6310185_1_202208111026.pdf
DFO(6310185-01)
- Add depth of 1.9 metres 46°22'51.2"N 063°48'53.8"W
(See Chart No. 1, I10)
DFO(6310185-02)

4468 - Île du Petit Mécatina aux/to Îles Sainte-Marie - New Edition - 15-OCT-2021 - NAD 1983

30-SEP-2022

LNMD. 10-JUN-2022

- Add red starboard hand lighted conical buoy FI R, marked CS4 50°27'20.7"N 059°37'43.2"W
(See Chart No. 1, Qb)
This notice affects Electronic Navigational Chart: CA279043, CA379115
(Q2022040) LL(1561.74) DFO(6410699-01)
- Add red starboard hand lighted conical buoy FI R, marked CS6 50°27'28.2"N 059°37'33.1"W
(See Chart No. 1, Qb)
This notice affects Electronic Navigational Chart: CA279043, CA379115
(Q2022041) LL(1561.76) DFO(6410700-01)

Delete red and white fairway lighted conical buoy Mo(A), marked CHE 50°27'13.1"N 059°37'26.4"W
(See Chart No. 1, Qd)
This notice affects Electronic Navigational Chart: CA279043, CA379115
(Q2022042) LL(1561.71) DFO(6410701-01)

Delete green port hand lighted can buoy FI G, marked CS3 50°27'26.5"N 059°37'20.7"W
(See Chart No. 1, Qc)
This notice affects Electronic Navigational Chart: CA279043, CA379115
(Q2022043) LL(1561.72) DFO(6410702-01)

4486 - Baie des Chaleurs / Chaleur Bay - New Edition - 19-FEB-1999 - NAD 1983
23-SEP-2022

LNM/D. 05-AUG-2022

Reposition red and white fairway lighted spar buoy Mo(A), marked TJ from 47°42'34.1"N 064°39'11.3"W
(See Chart No. 1, Qh) to 47°42'33.4"N 064°39'30.5"W
This notice affects Electronic Navigational Chart: CA376187, CA476275, CA576269
(G2022095) LL(1248) DFO(6310268-01)

4491 - Malpeque Bay - New Edition - 13-DEC-2002 - NAD 1983
16-SEP-2022

LNM/D. 24-DEC-2021

Reposition red and white fairway lighted spar buoy Mo(A), marked JS from 46°39'21.8"N 063°51'18.1"W
(See Chart No. 1, Qh) to 46°39'15.0"N 063°51'09.1"W
This notice affects Electronic Navigational Chart: CA276286
(G2022102) LL(1071.35) DFO(6310301-01)

4625 - Burin Peninsula to / à Saint-Pierre - New Edition - 24-JAN-2003 - NAD 1983
23-SEP-2022

LNM/D. 12-AUG-2022

Amend FI G to read Q G against light 46°52'42.2"N 055°40'08.6"W
(See Chart No. 1, P16)
This notice affects Electronic Navigational Chart: CA376164
(N2022178) LL(75.1) DFO(6310291-01)

4823 - Cape Ray to / à Garia Bay - New Chart - 16-JAN-2004 - NAD 1983
16-SEP-2022

LNM/D. 25-MAR-2022

Affix patch 47°36'31.0"N 058°42'02.0"W
Download Patch - https://www.notmar.gc.ca/chsftp/patches/4823_6310311_1_202208091153.pdf
This notice affects Electronic Navigational Chart: CA376625
DFO(6310311-01)

4831 - Fortune Bay: Northern Portion / Partie Nord - New Chart - 26-DEC-1986 - NAD 1983
30-SEP-2022

LNM/D. 12-NOV-2021

Add marine farm limits joining 47°39'26.6"N 055°08'35.8"W
(See Chart No. 1, K48.1) 47°39'20.9"N 055°08'19.2"W
47°39'51.1"N 055°07'57.6"W
47°39'56.6"N 055°08'14.3"W
and 47°39'26.6"N 055°08'35.8"W
This notice affects Electronic Navigational Chart: CA376316
DFO(6310318-01)

4832 - Fortune Bay: Southern Portion / Partie Sud - New Chart - 02-OCT-1987 - NAD 1983
16-SEP-2022

LNM/D. 18-MAR-2022

Add wharf joining 47°14'04.7"N 055°21'32.3"W
(See Chart No. 1, F13) 47°14'02.6"N 055°21'31.0"W
47°14'03.5"N 055°21'27.6"W
and 47°14'04.8"N 055°21'28.4"W
This notice affects Electronic Navigational Chart: CA376233
DFO(6310230-01)

Add	<p>pier (See Chart No. 1, F14) This notice affects Electronic Navigational Chart: CA376233</p>	<p>between 47°14'08.3"N 055°21'28.3"W and 47°14'11.1"N 055°21'28.3"W</p> <p><i>DFO(6310230-02)</i></p>
Reposition	<p>light QR 1s8m6M (See Chart No. 1, P1) This notice affects Electronic Navigational Chart: CA276274, CA376233</p>	<p>from 47°14'09.0"N 055°21'30.8"W to 47°14'11.3"N 055°21'29.8"W</p> <p><i>(N2022162) LL(112) DFO(6310270-01)</i></p>
Reposition	<p>light FI G (See Chart No. 1, P1) This notice affects Electronic Navigational Chart: CA376233</p>	<p>from 47°14'07.7"N 055°21'26.6"W to 47°14'10.7"N 055°21'28.3"W</p> <p><i>(N2022163) LL(112.1) DFO(6310271-01)</i></p>
<p>4845 - Aquaforte Harbour - New Edition - 12-SEP-1997 - NAD 1983 02-SEP-2022</p>		
Add	<p>breakwater with legend Bkw (See Chart No. 1, F4.1)</p>	<p>LN/D. 08-JUL-2022</p> <p>between 47°01'23.8"N 052°52'51.1"W and 47°01'24.5"N 052°52'52.4"W</p> <p><i>DFO(6310196-02)</i></p>
Add	<p>light FI G (See Chart No. 1, P1) This notice affects Electronic Navigational Chart: CA376070, CA476074</p>	<p>47°01'24.5"N 052°52'52.4"W</p> <p><i>(N2022126) LL(509.11) DFO(6310196-03)</i></p>
<p>4849 - Fish Plant / Conserverie de poisson - New Chart - 30-DEC-1988 - NAD 1983 09-SEP-2022</p>		
Add	<p>depth of 1 metre (See Chart No. 1, I10) This notice affects Electronic Navigational Chart: CA576398</p>	<p>LN/D. 24-DEC-2021</p> <p>47°41'21.9"N 053°13'16.7"W</p> <p><i>DFO(6310229-01)</i></p>
Add	<p>depth of 1.6 metres (See Chart No. 1, I10) This notice affects Electronic Navigational Chart: CA576398</p>	<p>47°41'27.1"N 053°13'03.7"W</p> <p><i>DFO(6310229-02)</i></p>
Add	<p>depth of 0.6 metres (See Chart No. 1, I10) This notice affects Electronic Navigational Chart: CA576398</p>	<p>47°41'27.1"N 053°13'01.0"W</p> <p><i>DFO(6310229-03)</i></p>
Delete	<p>depth of 1.4 metres (See Chart No. 1, I10) This notice affects Electronic Navigational Chart: CA576398</p>	<p>47°41'26.8"N 053°13'00.6"W</p> <p><i>DFO(6310229-04)</i></p>
Add	<p>depth of 1 metre (See Chart No. 1, I10) This notice affects Electronic Navigational Chart: CA576398</p>	<p>47°41'26.9"N 053°13'00.4"W</p> <p><i>DFO(6310229-05)</i></p>
Add	<p>depth of 5.5 metres (See Chart No. 1, I10) This notice affects Electronic Navigational Chart: CA576398</p>	<p>47°41'21.8"N 053°13'16.1"W</p> <p><i>DFO(6310229-06)</i></p>

Delete	depth of 5.8 metres (See Chart No. 1, I10) This notice affects Electronic Navigational Chart: CA576398	47°41'21.7"N 053°13'16.0"W <i>DFO(6310229-07)</i>
Add	depth of 5.9 metres (See Chart No. 1, I10) This notice affects Electronic Navigational Chart: CA576398	47°41'22.3"N 053°13'12.6"W <i>DFO(6310229-08)</i>
Add	depth of 3.6 metres (See Chart No. 1, I10) This notice affects Electronic Navigational Chart: CA576398	47°41'26.0"N 053°13'04.2"W <i>DFO(6310229-09)</i>
Delete	depth of 4.2 metres (See Chart No. 1, I10) This notice affects Electronic Navigational Chart: CA576398	47°41'25.8"N 053°13'03.9"W <i>DFO(6310229-10)</i>
Add	depth of 1.2 metres (See Chart No. 1, I10) This notice affects Electronic Navigational Chart: CA576398	47°41'27.6"N 053°13'01.6"W <i>DFO(6310229-11)</i>
Delete	depth of 1.2 metres (See Chart No. 1, I10) This notice affects Electronic Navigational Chart: CA576398	47°41'27.3"N 053°13'01.3"W <i>DFO(6310229-12)</i>
4855 - Bonavista Bay: Southern Portion / Partie sud - New Chart - 06-JUN-1997 - NAD 1983 16-SEP-2022		LNM/D. 08-JUL-2022
Delete	underwater rock of unknown depth, dangerous to surface navigation with legend Rep (2022) (See Chart No. 1, K13) This notice affects Electronic Navigational Chart: CA376807	48°25'30.0"N 053°58'09.0"W <i>DFO(6310315-01)</i>
Add	rock awash at chart datum (See Chart No. 1, K12) This notice affects Electronic Navigational Chart: CA376807	48°25'26.5"N 053°58'03.4"W <i>DFO(6310315-02)</i>
4861 - Entrances to Fogo Harbour - New Chart - 26-APR-2019 - NAD 1983 09-SEP-2022		LNM/D. 12-AUG-2022
Add	black and yellow North cardinal lighted spar buoy Q marked DFN (See Chart No. 1, Q130.3) This notice affects Electronic Navigational Chart: CA476719, CA576720 <i>(N2022152) LL(365.4) DFO(6310245-01)</i>	49°43'34.7"N 054°16'39.6"W
23-SEP-2022		LNM/D. 09-SEP-2022
Amend	FI G to read Q G against green port hand lighted spar buoy, marked DF3 (See Chart No. 1, Qg) This notice affects Electronic Navigational Chart: CA476719, CA576720 <i>(N2022150) LL(365.3) DFO(6310243-01)</i>	49°43'37.0"N 054°16'17.5"W

4861 - Fogo Harbour - New Chart - 26-APR-2019 - NAD 1983

09-SEP-2022

LNMD. 12-AUG-2022

Add red starboard hand lighted spar buoy Q R, marked DF6 49°43'05.5"N 054°16'23.9"W
(See Chart No. 1, Qf)
This notice affects Electronic Navigational Chart: CA576720
(N2022151) LL(365.515) DFO(6310244-01)

Add black and yellow North cardinal lighted spar buoy Q marked DFN 49°43'34.7"N 054°16'39.6"W
(See Chart No. 1, Q130.3)
This notice affects Electronic Navigational Chart: CA476719, CA576720
(N2022152) LL(365.4) DFO(6310245-01)

23-SEP-2022

LNMD. 09-SEP-2022

Amend FI G to read Q G against green port hand lighted spar buoy, marked DF3 49°43'37.0"N 054°16'17.5"W
(See Chart No. 1, Qg)
This notice affects Electronic Navigational Chart: CA476719, CA576720
(N2022150) LL(365.3) DFO(6310243-01)

4861 - Fogo Island Northern Portion - New Chart - 26-APR-2019 - NAD 1983

23-SEP-2022

LNMD. 09-SEP-2022

Amend FI G to read Q G against green port hand lighted spar buoy, marked DF3 49°43'37.0"N 054°16'17.5"W
(See Chart No. 1, Qg)
This notice affects Electronic Navigational Chart: CA476719, CA576720
(N2022150) LL(365.3) DFO(6310243-01)

4861 - Joe Batt's Arm - New Chart - 26-APR-2019 - NAD 1983

23-SEP-2022

LNMD. 09-SEP-2022

Reposition red starboard hand lighted spar buoy FI R, marked DJ12 from 49°43'45.1"N 054°09'59.0"W
(See Chart No. 1, Qf) to 49°43'46.5"N 054°10'00.6"W
This notice affects Electronic Navigational Chart: CA576722
(N2022146) LL(383.56) DFO(6310238-01)

Delete green port hand lighted spar buoy FI G, marked DJ13 49°43'45.6"N 054°09'58.0"W
(See Chart No. 1, Qg)
This notice affects Electronic Navigational Chart: CA576722
(N2022145) LL(383.551) DFO(6310240-01)

Add green port hand lighted spar buoy Q G, marked DJ13 49°43'43.3"N 054°09'58.6"W
(See Chart No. 1, Qg)
This notice affects Electronic Navigational Chart: CA576722
(N2022145) LL(383.551) DFO(6310240-02)

Reposition green port hand lighted spar buoy FI G, marked DJ15 from 49°43'38.2"N 054°09'59.2"W
(See Chart No. 1, Qg) to 49°43'37.4"N 054°09'58.4"W
This notice affects Electronic Navigational Chart: CA576722
(N2022148) LL(383.553) DFO(6310241-01)

Reposition red starboard hand lighted spar buoy FI R, marked DJ2 from 49°43'56.3"N 054°09'55.9"W
(See Chart No. 1, Qf) to 49°43'55.8"N 054°09'55.2"W
This notice affects Electronic Navigational Chart: CA576722
(N2022149) LL(383.8) DFO(6310242-01)

4862 - Carmanville to / à Bacalhoa Island and / et Fogo - New Chart - 26-DEC-2003 - NAD 1983

09-SEP-2022

LNMD. 08-JUL-2022

Add green port hand lighted spar buoy FI G, marked DWG1 49°40'41.3"N 054°22'58.1"W
(See Chart No. 1, Qg)
This notice affects Electronic Navigational Chart: CA476814
(N2022160) LL(344.39) DFO(6310253-01)

23-SEP-2022		LNMD. 09-SEP-2022
Reposition	red starboard hand lighted spar buoy FI R, marked DWG2 (See Chart No. 1, Qf) This notice affects Electronic Navigational Chart: CA476814	from 49°40'37.6"N 054°23'21.2"W to 49°40'36.6"N 054°23'28.2"W (N2022144) LL(345.41) DFO(6310237-01)
Amend	FIG to read Q G against green port hand lighted spar buoy, marked DF3 (See Chart No. 1, Qg) This notice affects Electronic Navigational Chart: CA476719, CA576720	49°43'36.8"N 054°16'18.1"W (N2022150) LL(365.3) DFO(6310243-01)
4863 - Bacalhao Island to / à Black Island - New Edition - 30-NOV-2001 - NAD 1983		
23-SEP-2022		LNMD. 12-AUG-2022
Amend	FI R to read FI G against light (See Chart No. 1, P16) This notice affects Electronic Navigational Chart: CA476803	49°29'21.3"N 054°47'48.5"W (N2022166) LL(355) DFO(6310274-01)
4886 - Fish Plant Wharf / Quai de l'usine de transformation de poisson - New Chart - 26-DEC-1997 - NAD 1983		
30-SEP-2022		LNMD. 08-JUL-2022
Delete	red starboard hand lighted spar buoy FI R, marked DT12 (See Chart No. 1, Qf) This notice affects Electronic Navigational Chart: CA576425	49°38'58.8"N 054°45'58.8"W (N2022142) LL(358.6) DFO(6310255-01)
Add	yellow cautionary lighted spar buoy FI Y, marked DT (See Chart No. 1, Qm) This notice affects Electronic Navigational Chart: CA576425	49°38'58.8"N 054°45'58.8"W (N2022142) LL(358.6) DFO(6310255-02)
4886 - Twillingate Harbours - New Chart - 26-DEC-1997 - NAD 1983		
30-SEP-2022		LNMD. 08-JUL-2022
Add	green port hand lighted spar buoy FI G, marked DUL7 (See Chart No. 1, Qg) This notice affects Electronic Navigational Chart: CA576425	49°39'47.2"N 054°44'13.5"W (N2022153) LL(361.63) DFO(6310246-01)
Add	green port hand lighted spar buoy FI G, marked DUL5 (See Chart No. 1, Qg) This notice affects Electronic Navigational Chart: CA576425	49°39'54.1"N 054°44'12.5"W (N2022154) LL(361.62) DFO(6310247-01)
Add	red starboard hand lighted spar buoy FI R, marked DUL4 (See Chart No. 1, Qf) This notice affects Electronic Navigational Chart: CA576425	49°40'01.9"N 054°44'09.2"W (N2022155) LL(361.61) DFO(6310248-01)
Add	green port hand lighted spar buoy FI G, marked DUR1/3 (See Chart No. 1, Qg) This notice affects Electronic Navigational Chart: CA576425	49°40'05.2"N 054°44'24.9"W (N2022157) LL(361.52) DFO(6310250-01)
Add	red starboard hand lighted spar buoy FI R, marked DUR2 (See Chart No. 1, Qf) This notice affects Electronic Navigational Chart: CA576425	49°40'12.2"N 054°44'14.3"W (N2022158) LL(361.5) DFO(6310251-01)

Add	red starboard hand lighted spar buoy FI R, marked DUL2 (See Chart No. 1, Qf) This notice affects Electronic Navigational Chart: CA576425	49°40'31.9"N 054°44'05.8"W (N2022159) LL(361.4) DFO(6310252-01)
Add	green port hand lighted spar buoy FI G, marked DUL3 (See Chart No. 1, Qg) This notice affects Electronic Navigational Chart: CA576425	49°40'10.4"N 054°43'59.7"W (N2022200) LL(361.6) DFO(6310317-01)
4909 - Richibucto Harbour - New Chart - 17-JUN-1988 - NAD 1983		
02-SEP-2022		LNM/D. 15-APR-2022
Add	red starboard hand conical buoy, marked Q58 (See Chart No. 1, Qf) This notice affects Electronic Navigational Chart: CA476131	46°38'46.5"N 064°52'09.3"W (G2022046) DFO(6310137-01)
4911 - Entrée à / Entrance to Miramichi River - New Edition - 27-JAN-2006 - NAD 1983		
23-SEP-2022		LNM/D. 15-APR-2022
Replace	depth of 8.1 metres with depth of 7.8 metres (See Chart No. 1, I10) This notice affects Electronic Navigational Chart: CA476133	47°05'54.1"N 064°56'49.7"W DFO(6310314-01)
Replace	depth of 7.4 metres with depth of 6.7 metres (See Chart No. 1, I10) This notice affects Electronic Navigational Chart: CA476133	47°06'23.4"N 064°58'05.0"W DFO(6310314-02)
Delete	depth of 3.8 metres (See Chart No. 1, I10) This notice affects Electronic Navigational Chart: CA476133	47°06'27.4"N 064°58'10.8"W DFO(6310314-03)
Add	depth of 3.6 metres (See Chart No. 1, I10) This notice affects Electronic Navigational Chart: CA476133	47°06'28.4"N 064°58'10.4"W DFO(6310314-04)
Delete	depth of 3 metres (See Chart No. 1, I10) This notice affects Electronic Navigational Chart: CA476133	47°06'47.8"N 064°58'29.3"W DFO(6310314-05)
Add	depth of 2.9 metres (See Chart No. 1, I10) This notice affects Electronic Navigational Chart: CA476133	47°06'46.6"N 064°58'29.4"W DFO(6310314-06)
Delete	depth of 3.5 metres (See Chart No. 1, I10) This notice affects Electronic Navigational Chart: CA476133	47°07'39.4"N 064°59'12.4"W DFO(6310314-07)
Add	depth of 3.1 metres (See Chart No. 1, I10) This notice affects Electronic Navigational Chart: CA476133	47°07'39.9"N 064°59'11.8"W DFO(6310314-08)

4912 - Miramichi - New Edition - 27-JAN-2006 - NAD 1983
23-SEP-2022

LNMD. 15-APR-2022

Replace	depth of 7 metres with depth of 6.1 metres (See Chart No. 1, I10) This notice affects Electronic Navigational Chart: CA476125	47°07'36.8"N 065°07'50.2"W	<i>DFO(6310314-09)</i>
Replace	depth of 5.4 metres with depth of 5.1 metres (See Chart No. 1, I10) This notice affects Electronic Navigational Chart: CA476125	47°07'56.4"N 065°10'33.8"W	<i>DFO(6310314-10)</i>
Replace	depth of 5.6 metres with depth of 5.3 metres (See Chart No. 1, I10) This notice affects Electronic Navigational Chart: CA476125	47°08'04.2"N 065°11'20.3"W	<i>DFO(6310314-11)</i>
Replace	depth of 7.3 metres with depth of 7 metres (See Chart No. 1, I10) This notice affects Electronic Navigational Chart: CA476125	47°04'40.4"N 065°23'27.1"W	<i>DFO(6310314-12)</i>
Delete	depth of 7 metres (See Chart No. 1, I10) This notice affects Electronic Navigational Chart: CA476125	47°04'28.8"N 065°24'12.0"W	<i>DFO(6310314-13)</i>
Add	depth of 6.5 metres (See Chart No. 1, I10) This notice affects Electronic Navigational Chart: CA476125	47°04'28.1"N 065°24'12.4"W	<i>DFO(6310314-14)</i>
Replace	depth of 6.5 metres with depth of 6.1 metres (See Chart No. 1, I10) This notice affects Electronic Navigational Chart: CA476125	47°04'20.1"N 065°24'25.7"W	<i>DFO(6310314-15)</i>
Delete	depth of 6.1 metres (See Chart No. 1, I10) This notice affects Electronic Navigational Chart: CA476125	47°04'11.3"N 065°24'35.7"W	<i>DFO(6310314-16)</i>
Add	depth of 5.7 metres (See Chart No. 1, I10) This notice affects Electronic Navigational Chart: CA476125	47°04'11.2"N 065°24'33.6"W	<i>DFO(6310314-17)</i>
Replace	depth of 7.9 metres with depth of 7.5 metres (See Chart No. 1, I10) This notice affects Electronic Navigational Chart: CA476125	47°03'56.7"N 065°25'05.1"W	<i>DFO(6310314-18)</i>

4912 - Continuation A - New Edition - 27-JAN-2006 - NAD 1983
23-SEP-2022

LNMD. 15-APR-2022

Replace	depth of 7.9 metres with depth of 7.5 metres (See Chart No. 1, I10) This notice affects Electronic Navigational Chart: CA476125	47°03'56.7"N 065°25'05.1"W	<i>DFO(6310314-18)</i>
---------	---	----------------------------	------------------------

4913 - Caraquet Harbour, Baie de Shippegan and / et Miscou Harbour - New Chart - 07-AUG-1992 - NAD 1983

23-SEP-2022

LNMD. 05-AUG-2022

Reposition red starboard hand conical lighted buoy FI R, marked EC4 from 47°53'11.9"N 064°40'11.9"W
(See Chart No. 1, Qf) to 47°53'12.3"N 064°40'04.6"W
This notice affects Electronic Navigational Chart: CA476275
(G2022093) LL(1273.15) DFO(6310266-01)

Reposition red and white fairway lighted spar buoy Mo(A), marked TJ from 47°42'34.1"N 064°39'11.3"W
(See Chart No. 1, Qh) to 47°42'33.4"N 064°39'30.5"W
This notice affects Electronic Navigational Chart: CA376187, CA476275, CA576269
(G2022095) LL(1248) DFO(6310268-01)

4920 - Shippegan Harbour - New Edition - 14-DEC-2018 - NAD 1983

16-SEP-2022

LNMD. 17-JUN-2022

Replace depth of 2.7 metres with depth of 2.4 metres 47°43'32.6"N 064°40'02.4"W
(See Chart No. 1, I10)
This notice affects Electronic Navigational Chart: CA576269
DFO(6310226-01)

Replace depth of 1 metre with depth of 0.6 metres 47°43'48.0"N 064°40'03.6"W
(See Chart No. 1, I10)
This notice affects Electronic Navigational Chart: CA576269
DFO(6310226-02)

Replace depth of 1.6 metres with depth of 1.1 metres 47°43'56.4"N 064°40'20.5"W
(See Chart No. 1, I10)
This notice affects Electronic Navigational Chart: CA576269
DFO(6310226-03)

Replace depth of 3.5 metres with depth of 3.1 metres 47°43'58.2"N 064°40'19.7"W
(See Chart No. 1, I10)
This notice affects Electronic Navigational Chart: CA576269
DFO(6310226-04)

Replace depth of 0.7 metres with depth of 0.4 metres 47°44'03.9"N 064°40'40.9"W
(See Chart No. 1, I10)
This notice affects Electronic Navigational Chart: CA576269
DFO(6310226-05)

Delete depth of 3 metres 47°44'07.0"N 064°40'48.7"W
(See Chart No. 1, I10)
This notice affects Electronic Navigational Chart: CA576269
DFO(6310226-06)

Add depth of 1.9 metres 47°44'07.3"N 064°40'48.1"W
(See Chart No. 1, I10)
This notice affects Electronic Navigational Chart: CA576269
DFO(6310226-07)

Delete depth of 2.8 metres 47°44'09.6"N 064°40'49.4"W
(See Chart No. 1, I10)
This notice affects Electronic Navigational Chart: CA576269
DFO(6310226-08)

Add depth of 2.3 metres 47°44'09.1"N 064°40'50.0"W
(See Chart No. 1, I10)
This notice affects Electronic Navigational Chart: CA576269
DFO(6310226-09)

Add depth of 1.8 metres 47°44'26.8"N 064°41'10.0"W
(See Chart No. 1, I10)
This notice affects Electronic Navigational Chart: CA576269
DFO(6310226-10)

23-SEP-2022 LNM/D. 16-SEP-2022

Reposition red and white fairway lighted spar buoy Mo(A), marked TJ from 47°42'34.1"N 064°39'11.3"W
(See Chart No. 1, Qh) to 47°42'33.4"N 064°39'30.5"W
This notice affects Electronic Navigational Chart: CA376187, CA476275, CA576269
(G2022095) LL(1248) DFO(6310268-01)

5138 - Cartwright Harbour - New Edition - 17-APR-1998 - NAD 1983

30-SEP-2022 LNM/D. 19-AUG-2022

Add depth of 1 fathom, 1 foot 53°42'13.0"N 057°01'17.9"W
(See Chart No. 1, I10)
This notice affects Electronic Navigational Chart: CA576498
DFO(6310313-02)

Add depth of 1 fathom, 5 feet 53°42'11.7"N 057°01'19.4"W
(See Chart No. 1, I10)
This notice affects Electronic Navigational Chart: CA576498
DFO(6310313-03)

Delete wharf joining 53°42'10.8"N 057°01'18.5"W
(See Chart No. 1, F13) 53°42'11.3"N 057°01'18.5"W
53°42'11.6"N 057°01'17.6"W
53°42'12.0"N 057°01'17.0"W
53°42'12.1"N 057°01'17.3"W
and 53°42'12.9"N 057°01'17.1"W
This notice affects Electronic Navigational Chart: CA576498
DFO(6310313-04)

Add wharf joining 53°42'10.8"N 057°01'18.5"W
(See Chart No. 1, F13) 53°42'11.3"N 057°01'18.8"W
and 53°42'12.9"N 057°01'17.1"W
This notice affects Electronic Navigational Chart: CA576498
DFO(6310313-05)

6021 - Lake Muskoka - Sheet/Feuille 1 - New Edition - 30-JUL-2004 - NAD 1983

23-SEP-2022 LNM/D. 25-MAR-2022

Reposition red starboard hand conical buoy, marked EH12/2 from 45°01'21.2"N 079°23'26.0"W
(See Chart No. 1, Qf) to 45°01'24.3"N 079°23'25.8"W
(D2022031) DFO(6604938-01)

6105 - Rainy Lake / Lac à la Pluie - Sheet/Feuille 1 - New Edition - 21-JUN-2002 - NAD 1983

30-SEP-2022 LNM/D. 22-APR-2022

Delete light, marked FI 48°36'52.1"N 093°22'02.3"W
(See Chart No. 1, P1)
(D2022034) LL(1468) DFO(6604940-01)

6108 - Fort Frances to/à Hostess Island and/et Sandpoint Island - New Edition - 10-NOV-2000 - NAD 1983

30-SEP-2022 LNM/D. 06-NOV-2020

Delete light, marked FI 48°36'50.5"N 093°22'01.9"W
(See Chart No. 1, P1)
(D2022034) LL(1468) DFO(6604940-01)

7787 - ST. ROCH AND/ET RASMUSSEN BASINS - New Chart - 03-JUL-2020 - World Geodetic System 1984

02-SEP-2022

Delete	depth of 16.7 metres (See Chart No. 1, I10)	68°34'00.4"N 095°45'13.6"W <i>DFO(6604935-01)</i>
Add	depth of 13.3 metres (See Chart No. 1, I10) This notice affects Electronic Navigational Chart: CA373468	68°34'10.7"N 095°45'02.7"W <i>DFO(6604935-02)</i>
Add	depth of 10 metres (See Chart No. 1, I10) This notice affects Electronic Navigational Chart: CA373468	68°36'56.9"N 095°25'02.3"W <i>DFO(6604935-03)</i>

7788 - Simpson Strait to Rasmussen Basin - New Chart - 03-JUL-2020 - World Geodetic System 1984

02-SEP-2022

Delete	depth of 16.7 metres (See Chart No. 1, I10)	68°34'00.4"N 095°45'13.6"W <i>DFO(6604935-01)</i>
Add	depth of 13.3 metres (See Chart No. 1, I10) This notice affects Electronic Navigational Chart: CA373468	68°34'10.7"N 095°45'02.7"W <i>DFO(6604935-02)</i>
Add	depth of 10 metres (See Chart No. 1, I10) This notice affects Electronic Navigational Chart: CA373468	68°36'56.9"N 095°25'02.3"W <i>DFO(6604935-03)</i>
Delete	depth of 16.8 metres (See Chart No. 1, I10) This notice affects Electronic Navigational Chart: CA373469	68°25'30.9"N 096°35'29.5"W <i>DFO(6604935-04)</i>
Add	depth of 13.7 metres (See Chart No. 1, I10) This notice affects Electronic Navigational Chart: CA373469	68°25'31.4"N 096°35'39.1"W <i>DFO(6604935-05)</i>

8005 - Georges Bank - New Edition - 20-JUN-2003 - NAD 1983

02-SEP-2022

Reposition	yellow ODAS/SADO light buoy Fl(4) Y 20s, marked 44008 (See Chart No. 1, L25)	LNMD. 03-JUN-2022 from 40°29'51.0"N 069°15'04.0"W to 40°29'44.0"N 069°15'01.0"W <i>DFO(6310187-01)</i>
------------	---	---

Section 3: Radio Aids to Marine Navigation Corrections

*913/22 Radio Aids to Marine Navigation 2022 (Atlantic, St. Lawrence, Great Lakes, Lake Winnipeg, Arctic and Pacific)

Copyright page

AMEND AS FOLLOWS:

Published under the Authority of:

Director General, Operations
Fisheries and Oceans Canada
Canadian Coast Guard
Ottawa, ON K1A 0E6

For more information, contact DFO.MCTS-SCTM.MPO@dfo-mpo.gc.ca MCTS.XNCR@dfo-mpo.gc.ca.

Annual Edition 2022

© Her His Majesty the King Queen in Right of Canada, as represented by the Minister of Fisheries, Oceans and the Canadian Coast Guard, 2022.

Page 1-2

AMEND:

1.1.3 DGPS

CCG intends to discontinue the provision of its DGPS service and shut down 19 DGPS stations across Canada by the end of 2022.

Discontinuing this service aligns with CCG's efforts to modernize marine navigation services and find alternatives to aging DGPS services and infrastructure.

Modern GPS meets the needs of international position, navigation and timing (PNT) requirements. Further, for mariners in Canadian waters, there is no carriage requirement for ground- or space-based augmentation capability onboard vessels for Global Navigation Satellite Systems (GNSS).

Modern GNSS receivers can use the wide area augmentation system (WAAS) as a viable alternative to DGPS. CCG's technical review of PNT solutions for Canada, and a study of the performance of WAAS found coverage to be excellent throughout Canada, including up to 72° north latitude in the Arctic.

TO READ:

1.1.3 DGPS

On December 15th, 2022, the Canadian Coast Guard will permanently discontinue the provision of its DGPS service across Canada.

Discontinuing this service aligns with Coast Guard’s efforts to modernize marine navigation services and find alternatives to aging DGPS infrastructures. Today’s GPS meets the needs of international Position, Navigation and Timing (PNT) requirements. Furthermore, for mariners in Canadian waters, there is no carriage requirement for ground- or space-based augmentation capability onboard vessels for the global navigation satellite system (GNSS).

Modern GNSS receivers can use the Wide Area Augmentation System (WAAS) as a viable alternative to DGPS. Coast Guard’s technical review of PNT solutions for Canada, and a study of the performance of WAAS found coverage to be excellent throughout Canada, including up to 72° north latitude in the Arctic.

Page 1-2

ADD AS FOLLOWS:

1.1.5 Radio beacons

NAV Canada plans to decommission the radio beacon at Tofino on June 15, 2023 and to decommission the radio beacon at Active Pass on November 30th, 2023.

Page 2-1

DELETE AS FOLLOWS:

Coordinates

Mailing Address:

Fisheries and Oceans Canada
Canadian Coast Guard
Officer-in-Charge – MCTS Operations
Halifax MCTS Centre
10 Hudson Way
Dartmouth, NS B2Y 3Z8

Telephone: 902-426-9750 or 902-426-9751	MCTS Operations
1-888-528-6444	MCTS Operations, Toll-Free
902-426-5645	Commercial Public Correspondence Service
902-426-9738	Officer-in-Charge
902-426-4956	ECAREG

Facsimile: 902-426-4483

Email: hlxecareg1@innav.gc.ca ECAREG Canada
Supervisor.mcts-halifax@dfo-mpo.gc.ca

Page 2-6

DELETE AS FOLLOWS:

Coordinates

Mailing Address:

Fisheries and Oceans Canada
Canadian Coast Guard
Officer-in-Charge – MCTS Operations
Iqaluit MCTS Centre / NORDREG CANADA
P.O. Box 189

1063 Niuraivik Lane
Iqaluit, NU X0A 0H0

Telephone: 867-979-5269 MCTS Operations (East)
 867-979-0310 MCTS Operations (West)
 867-979-5724 NORDREG Operations
 ~~867-979-5260~~ ~~Officer-in-Charge (Administration)~~

Facsimile: 867-979-4264 MCTS/NORDREG Operations

Telex (Telefax): 063-15529 NORDREG CDA

Email: IQANORDREG@INNAV.GC.CA (operations)

NAVWARN.MCTS@innav.gc.ca

Page 2-12

DELETE AS FOLLOWS:

Coordinates

Mailing Address:

Fisheries and Oceans Canada
Canadian Coast Guard
Officer-in-Charge – MCTS Operations
Labrador MCTS Centre
P.O. Box 720, Station C
Happy Valley-Goose Bay, NL A0P 1C0

Telephone: 709-896-2252 MCTS Operations
 709-896-0277/0278 Commercial Public Correspondence Service
 ~~709-896-5817~~ ~~Officer-in-Charge~~

Facsimile: 709-896-8455

Email: Safety.Labrador@innav.gc.ca

Page 2-16

DELETE AS FOLLOWS:

Coordinates

Mailing Address:

Fisheries and Oceans Canada
Canadian Coast Guard
Officer-in-Charge – MCTS Operations
Les Escoumins MCTS Centre
35 Otis Street
Les Escoumins, QC G0T 1K0

Telephone: 418-233-2194 MCTS Operations
 418-233-3451 Coast Guard Radio
 418-233-3556 Public Correspondence Service
 418-233-3483 ECAREG Canada and NORDREG Canada
 ~~418-233-2854~~ ~~Officer-in-Charge (administration)~~

~~Facsimile: 418-233-3299~~

Email: safety.escoumins@innav.gc.ca (Coast Guard Radio)
 ecareg.escoumins@innav.gc.ca (ECAREG Canada)
 iqanordreg@innav.gc.ca (NORDREG Canada – late December to mid-May)

Page 2-25

DELETE AS FOLLOWS:

Coordinates

Mailing Address:

Fisheries and Oceans Canada
Canadian Coast Guard
Officer-in-Charge – MCTS Operations
Port aux Basques MCTS Centre
P.O. Box 99
Port aux Basques, NL A0M 1C0

Telephone: 709-695-2167 MCTS Operations
 709-695-2886 Commercial Public Correspondence Service
 ~~709-695-2133~~ ~~Officer-in-Charge~~

Facsimile: 709-695-7784

Email: safety.portauxbasques@innav.gc.ca
 NAVWARN.MCTSPortAuxBasques@innav.gc.ca

Page 2-28

DELETE AS FOLLOWS:

Coordinates

Mailing Address:

Fisheries and Oceans Canada
Canadian Coast Guard
Officer-in-Charge – MCTS Operations
Prescott MCTS Centre
P.O. Box 1000
401 King Street West
Prescott, ON K0E 1T0

Telephone: 613-925-4471 MCTS Operations
~~613-925-0618~~ ~~Officer-in-Charge~~
613-925-0666 NAVWARN Desk / NAVAREA XVII and XVIII

Facsimile: 613-925-4519

Email: Safety.Prescott@innav.gc.ca Prescott MCTS
navarea17.18@innav.gc.ca NAVAREA XVII and XVIII
NAVWARN.MCTSPrescott@innav.gc.ca

Page 2-32

DELETE AS FOLLOWS:

Coordinates

Mailing Address:

Fisheries and Oceans Canada
Canadian Coast Guard
Officer-in-Charge – MCTS Operations
Prince Rupert MCTS Centre
Bag 4444
Prince Rupert, BC V8J 4K2

Telephone: 250-627-3070 MCTS Operations/Supervisor
~~250-627-3077~~ ~~Officer-in-Charge~~
250-624-9009 Continuous Marine Broadcast (CMB North)
250-726-3415 Continuous Marine Broadcast (CMB South)
250-627-3081 Marine Emergency/Safety – North
250-627-3082 Marine Emergency/Safety – South

Facsimile: 250-624-9075 MCTS Operations

Email: supervisor.rupert@innav.gc.ca
NAVWARN.MCTSPPrinceRupert@innav.gc.ca

Page 2-38

DELETE AS FOLLOWS:

Coordinates

Mailing Address:

Fisheries and Oceans Canada
Canadian Coast Guard
Officer-in-Charge – MCTS Operations
Québec MCTS Centre
1550 Avenue D'Estimauville
Québec, QC G1J 5E9

Telephone: 418-648-4427 MCTS Operations
~~418-648-7459~~ — ~~Officer-in-Charge~~

Facsimile: 418-648-7244

Email: awn-raa@innav.gc.ca
qbcsup@innav.gc.ca

Page 2-40

DELETE AS FOLLOWS:

Coordinates

Mailing Address:

Fisheries and Oceans Canada
Canadian Coast Guard
Officer-in-Charge - MCTS Operations
Sarnia MCTS Centre
105 Christina St. South
Sarnia, ON N7T 7W1

Telephone: 519-337-6221 MCTS Operations
~~519-337-6572~~ — ~~Officer-in-Charge~~

Facsimile: 519-336-0229

Email: Safety.Sarnia@innav.gc.ca

Page 2-44

DELETE AS FOLLOWS:

Coordinates

Mailing Address:

Fisheries and Oceans Canada
Canadian Coast Guard
Officer-in-Charge – MCTS Operations
Sydney MCTS Centre
1190 Westmount Road
Sydney, NS B1R 2J6

Telephone: 902-564-7751 MCTS Operations
 1-800-686-8676 MCTS Operations Toll Free
 902-564-2446 Commercial Public Correspondence Service
 ~~902-564-7752~~ ~~Officer in Charge~~

Facsimile: 902-564-7662

Email: Safety.Sydney@innav.gc.ca
NAVWARN.MCTSSydney@innav.gc.ca

Page 2-48

DELETE AS FOLLOWS:

Coordinates

Mailing Address:

Fisheries and Oceans Canada
Canadian Coast Guard
Officer-in-Charge – MCTS Operations
Victoria MCTS Centre
Institute of Ocean Sciences
9860 West Saanich Road
P.O. Box 6000
Sidney, BC V8L 4B2

Telephone: 250-363-6611 MCTS Operations
 1-800-661-9202 Toll Free MCTS Operations (within B.C. only)
 ~~250-363-6818~~ ~~Officer in Charge~~
 250-363-6836 Administration
 250-363-6333 Shift Supervisor
 250-363-6880 Continuous Marine Broadcast (CMB) – Mount Helmcken
 250-363-6492 Continuous Broadcast (CMB) – Bowen Island/Mount Parke
 604-666-3655 Continuous Broadcast (CMB) – Bowen Island/Mount Parke
 250-339-0748 Continuous Marine Broadcast (CMB) – Mid-Island Area
 250-974-5305 Continuous Marine Broadcast (CMB) – North Island Area

Facsimile: 250-363-6556

Email: supervisor.victoria@innav.gc.ca

Website: www.ccg-gcc.gc.ca/mcts-sctm/index-eng.html

Page 2-62

DELETE AS FOLLOWS:

Table 2-30 - Pacific Coast (Radio Beacons Located in British Columbia)

Name and Location	Frequency (kHz)	Range (Nautical Miles)	Identifier	Remarks
Active Pass 48°52'26"N 123°17'23"W	378	50	• – (A) • – – • (P)	Open year round. Caution: bearing error could result from coastal refraction. (NAV Canada).
Dead Tree Point 53°21'01"N 131°56'23"W	248	25	– – – • (Z) – – – • (Z) – – – • (P)	Open year round (NAV Canada).
Masset 54°01'54"N 132°07'38"W	278	25	– – – • (T) – – – • (U)	Open year round (NAV Canada).
Prince Rupert 54°15'49"N 130°25'20"W	218	100	• – – • (P) • – • (R)	Open year round (NAV Canada).
Sandspit (The NAV-Canada operated Sandspit radio beacon on 368 kHz is not the same one used for DGPS.) 53°11'48"N 131°46'33"W	368	75	– – – • (Z) – – – • (P)	Open year round. Caution: bearing error could result from coastal refraction. (NAV Canada).
Tofino 49°02'54"N 125°42'16"W	359	50	– • – – (Y) • – (A) – – – • (Z)	Open year round. Caution: bearing error could result from coastal refraction. (NAV Canada).

Page 4-8

AMEND:

When Distress Traffic has ceased or when silence is no longer necessary, the station that has controlled the Distress Traffic must transmit a message on the distress frequency advising that the distress traffic has ceased.

- a) a) the word "MAYDAY";
- b) b) the words "ALL STATIONS" (spoken three times);
- c) c) the words "THIS IS";
- d) d) the name of the station which has controlled the distress traffic (spoken three times);
- e) e) the call-sign or other identification of the station which has controlled the distress traffic;
- f) f) the MMSI (if the initial distress alert was sent by DSC) and the name and call sign of the ship that was in distress and a brief description of the resolution of the distress;
- g) g) the current Coordinated Universal Time (UTC);
- h) h) the words "SEELONCE FEENEE"; and
- i) i) the word "OUT".

TO READ:

When Distress Traffic has ceased or when silence is no longer necessary, the station that has controlled the Distress Traffic must transmit a message on the distress frequency advising that the distress traffic has ceased.

- a) the word “MAYDAY”;
- b) the words “ALL STATIONS” (spoken three times);
- c) the words “THIS IS”;
- d) the name of the station which has controlled the distress traffic (spoken three times);
- e) the call-sign or other identification of the station which has controlled the distress traffic;
- f) the date/time of the initial report in Coordinated Universal Time (UTC);
- g) the MMSI (if the initial distress alert was sent by DSC) and the name and call sign of the ship that was in distress and a brief description of the resolution of the distress;
- h) the words “SEELONCE FEENEE”; and
- i) the word “OUT”.

Page 5-26

AMEND AS FOLLOWS:

Detailed information regarding the geographic locations and boundaries associated with the METAREAs forecast zones may be obtained by contacting the Meteorological Service of Canada at the following:

Telephone: ~~709-256-6608~~ 587-334-2892

Facsimile: ~~709-256-6627~~

Email: metarea17.18@ec.gc.ca

Section 4: Canadian Sailing Directions Corrections

The following **Canadian Sailing Directions** volumes have recently been updated on the [Canadian Hydrographic Service website](#).

No.	Title
Atlantic Coast	
ATL101	Newfoundland, Northeast and East Coasts
ATL102	Newfoundland, East and South Coasts
ATL103	Newfoundland, Southwest Coast
ATL108	Gulf of St. Lawrence (Southwest Portion)
ATL109	Gulf of St. Lawrence (Northeast Portion)
ATL110	St. Lawrence River, Cap Whittle / Cap Gaspé to Les Escoumins and Anticosti Island
ATL111	St. Lawrence River, Île Verte to Québec and Fjord du Saguenay
ATL112	St. Lawrence River, Cap-Rouge to Montréal and Rivière Richelieu
ATL120	Labrador, Camp Islands to Hamilton Inlet (including Lake Melville)
ATL121	Labrador, Hamilton Inlet to Cape Chidley (including Button Islands and Gray Strait)
Pacific Coast	
PAC200	General Information, Pacific Coast
PAC201	Juan de Fuca Strait and Strait of Georgia
PAC202	Discovery Passage to Queen Charlotte Strait and West Coast of Vancouver Island

Each volume includes a section entitled “Record of Changes” which lists all updates that are incorporated during the current calendar year.

Section 5: List of Lights, Buoys and Fog Signals Corrections

The amendments are highlighted and deletions are crossed out. For general and region-specific information on the List of Lights, click on the following links: [Newfoundland and Labrador Coast](#), [Atlantic Coast](#), [Inland Waters](#) and [Pacific Coast](#).

No.	Name	Position ----- Latitude N. Longitude W.	Light Characteristics	Focal Height in m. above water	Nomi- nal Range	Description ----- Height in meters above ground	Remarks ----- Fog Signals
-----	------	--	--------------------------	--	-----------------------	--	---------------------------------

NEWFOUNDLAND AND LABRADOR COAST

ST. MARY'S BAY (LL 7.5 – 14)

8.5 H0434.5	Admirals Beach Wharf Light	47 00 22.9 053 38 36.5	Fl R 4s	2	Mast.	Seasonal.
							Chart:4843 Edn 09/22 (N22-175)

PLACENTIA BAY (LL 14.4 – 79)

49.8 H0384	Little Paradise Point Light	N. of Marticot Island. 47 21 05.0 054 34 50.0	Fl W 4s	8.8	5	Square skeleton tower, red and white rectangular daymark. 4.3	Flash 1 s, eclipse 3 s. Year round.
							Chart:4622 Edn 09/22 (N22-164)
51.5 H0386.1	Church Yard Gut Light	N. of Marticot Island. 47 20 50.2 054 35 58.7	Fl G 4s	5.8	4	Square skeleton tower, green and white rectangular daymark. 4.9	Seasonal.
							Chart:4622 Edn 09/22 (N22-176)
75.1 H0354	Lord's Cove Wharf Light	46 52 42.2 055 40 08.6	Q G 1s	4.2	4	Mast. 2.2	Seasonal.
							Chart:4625 Edn 09/22 (N22-178)

FORTUNE BAY (LL 100 – 120.1)

112 H0318	Garnish Light	On end of breakwater. 47 14 11.3 055 21 29.8	Q R 1s	8.5	6	Square skeleton tower, red and white rectangular daymark. 4.3	Flash 0.3 s; eclipse 0.7 s. Year round.
							Chart:4832 Edn 09/22 (N22-162)
112.1 H0318.2	Garnish Inner Breakwater Light	47 14 10.7 055 21 28.3	Fl G 4s	3.5	4	Cylindrical Mast. 2.2	Year round.
							Chart:4832 Edn 09/22 (N22-163)

WEST COAST (LL 173 – 208.2)

176.12	Crabbes River Channel #2 light buoy XD1	48 13 17.3 058 51 57.5	Fl G 4s	Green spar, marked "XD1".	Seasonal.
							Chart:4022 Edn 09/22 (N22-137)

NOTRE DAME BAY (LL 326 – 395)

335.5 H0680.7	Beachside Wharf Light	49 38 34.0 055 53 44.8	Fl R 4s	3.6	4	Cylindrical Mast. 2.4	Flash 1 s; eclipse 3 s. Seasonal.
							Chart:4585 Edn 09/22 (N22-172)
344.39	Change Islands light buoy DWG1	49 40 41.3 054 22 58.1	Fl G 4s	Green spar, marked "DWG1".	Operates 24 h. Seasonal.
							Chart:4862 Edn 09/22 (N22-160)

Notices to Mariners – Monthly Eastern Edition
Section 5: List of Lights, Buoys and Fog Signals Corrections

No.	Name	Position ----- Latitude N. Longitude W.	Light Characteristics	Focal Height in m. above water	Nomi- nal Range	Description ----- Height in meters above ground	Remarks ----- Fog Signals
344.41	Skinner Rock light buoy DWG5	Change Islands. 49 40 32.5 054 23 38.0	Fl G 4s	Green spar, marked "DWG5".	Seasonal. Chart:4862 Edn 09/22 (N22-143)
345.41	White Ground Shoal light buoy DWG2	N. of Change Islands. 49 40 36.6 054 23 28.2	Fl R 4s	Red spar, marked "DWG2".	Seasonal. Chart:4862 Edn 09/22 (N22-144)
355 H0651.6	Summerford Wharf Light	On outer end of wharf. 49 29 21.3 054 47 48.5	Fl G 5s	3.6	2	Cylindrical Mast. 2.4	Flash 1 s; eclipse 4 s. Seasonal. Chart:4863 Edn 09/22 (N22-166)
356 H0651	Moreton's Harbour Wharf Light	49 34 39.4 054 52 17.4	Fl R 4s	4.0	2	Cylindrical Mast. 2.4	Flash 1 s; eclipse 3 s. Seasonal. Chart:4863 Edn 09/22 (N22-165)
358.6	Twillingate Cautionary light buoy DT	Twillingate Harbour. 49 38 58.8 054 45 58.8	Fl Y 4s	Yellow spar, marked "DT".	Seasonal. Chart:4886 Edn 09/22 (N22-142)
361.4	Parky Rock light buoy DUL2	49 40 31.9 054 44 05.8	Fl R 4s	Red spar, marked "DUL2".	Operates 24 h. Seasonal. Chart:4886 Edn 09/22 (N22-159)
361.5	Mad Rocks light buoy DUR2	49 40 12.2 054 44 14.3	Fl R 4s	Red spar, marked "DUR2".	Operates 24 h. Seasonal. Chart:4886 Edn 09/22 (N22-158)
361.52	Farmers Arm light buoy DUR1/3	49 40 05.2 054 44 24.9	Fl G 4s	Green spar, marked "DUR1/3".	Operates 24 h. Seasonal. Chart:4886 Edn 09/22 (N22-157)
361.6	Primer Rock light buoy DUL3	49 40 10.4 054 43 59.7	Fl G 4s	Green spar, marked "DUL3".	Operates 24 h. Seasonal. Chart:4886 Edn 09/22 (N22-200)
361.61	Durrell Arm light buoy DUL4	49 40 01.9 054 44 09.2	Fl R 4s	Red spar, marked "DUL4".	Operates 24 h. Seasonal. Chart:4886 Edn 09/22 (N22-155)
364 H0622	Little Fogo Islands Light	On N. extremity of largest island. 49 49 12.2 054 05 37.1	Fl W 4s	48.2	7	Square skeleton tower, red and white rectangular daymark. 4.3	Flash 1 s; eclipse 3 s. Seasonal. Chart:4861 Edn 09/22 (N22-168)
365.3	Pilly Rock light buoy DF3	Fogo Harbour. 49 43 37.0 054 16 17.5	Q G 1s	Green spar, marked "DF3".	Seasonal. Chart:4529 Edn 09/22 (N22-150)

Notices to Mariners – Monthly Eastern Edition
Section 5: List of Lights, Buoys and Fog Signals Corrections

No.	Name	Position ----- Latitude N. Longitude W.	Light Characteristics	Focal Height in m. above water	Nomi- nal Range	Description ----- Height in meters above ground	Remarks ----- Fog Signals
365.4	Garrison Point North Cardinal light buoy DFN	49 43 34.7 054 16 39.6	Q W 1s	Black and yellow, marked "DFN".	Operates 24 h. Seasonal. Chart:4861 Edn 09/22 (N22-152)
365.515	Fogo Harbour light buoy DF6	49 43 05.5 054 16 23.9	Q R 1s	Red spar, marked "DF6".	Operates 24 h. Seasonal. Chart:4861 Edn 09/22 (N22-151)
382.5 H0617.6	Barr'd Island Light	On head. 49 43 48.2 054 11 40.0	Fl R 4s	10.1	4	Cylindrical Mast. 2.4	Flash 1 s; eclipse 3 s. Seasonal. Chart:4861 Edn 09/22 (N22-170)
383.5 H0617.4	Joe Batt's Arm Wharf Light	Seaward end of public wharf. 49 43 49.2 054 09 30.5	Fl G 4s	3.7	4	Cylindrical Mast. 2.4	Flash 1 s; eclipse 3 s. Seasonal. Chart:4861 Edn 09/22 (N22-174)
383.551	Joe Batt's Arm Outer light buoy DJ13	Fogo Island. 49 43 41.1 054 10 00.4	Q G 1s	Green spar, marked "DJ13".	Seasonal. Chart:4861 Edn 09/22 (N22-145)
383.552	Joe Batt's Arm Inner light buoy DJ14	Fogo Island. 49 43 40.2 054 09 59.4	Fl R 4s	Red spar, marked "DJ14".	Seasonal. Chart:4861 Edn 09/22 (N22-147)
383.553	Joe Batt's Arm Inner light buoy DJ15	Fogo Island. 49 43 37.4 054 09 58.4	Fl G 4s	Green spar, marked "DJ15".	Seasonal. Chart:4861 Edn 09/22 (N22-148)
383.56	Joe Batt's Arm Outer light buoy DJ12	Fogo Island. 49 43 46.5 054 10 00.6	Fl R 4s	Red spar, marked "DJ12".	Seasonal. Chart:4861 Edn 09/22 (N22-146)
383.8	Pomeroy Rock light buoy DJ2	Entrance to Joe Batt's Arm, Fogo Island. 49 43 55.8 054 09 55.2	Fl R 4s	Red spar, marked "DJ2".	Seasonal. Chart:4861 Edn 09/22 (N22-149)
BONAVISTA BAY (LL 396 – 449.5)							
443.1 H0540.1	Kings Cove Wharf Light	48 34 03.9 053 19 57.4	Fl R 4s	4	Mast.	Flash 1 s; eclipse 3 s. Seasonal. Chart:4854 Edn 09/22 (N22-179)
TRINITY BAY (LL 450.1 – 471.51)							
470.5 H0503.2	Old Perican Inner Breakwater Light	48 05 14.0 053 00 29.6	Fl R 3s	4.6	4	Mast. 2.6	Flash 0.5 s; eclipse 2.5 s. Seasonal. Chart:4850 Edn 09/22 (N22-180)
470.7 H0503	Old Perican Inner Breakwater Light	48 05 12.6 053 00 36.3	Fl G 3s	4.0	4	Mast. 2.6	Flash 0.5 s; eclipse 2.5 s. Seasonal. Chart:4850 Edn 09/22 (N22-181)

Notices to Mariners – Monthly Eastern Edition
Section 5: List of Lights, Buoys and Fog Signals Corrections

No.	Name	Position ----- Latitude N. Longitude W.	Light Characteristics	Focal Height in m. above water	Nomi- nal Range	Description ----- Height in meters above ground	Remarks ----- Fog Signals
-----	------	--	--------------------------	--	-----------------------	--	---------------------------------

CONCEPTION BAY (LL 471.7 – 498.5)

483 H0483.5	Spaniard's Bay Breakwater Light	47 37 20.5 053 16 16.9	Fl R 4s	2	Mast. 2.6	Seasonal. Chart:4847 Edn 09/22 (N22-183)
488.2 H0479	Brigus Wharf Light	On outer end of wharf. 47 32 21.8 053 12 20.6	Fl R 4s	5.2	4	Triangular skeleton Mast. 3.4	Seasonal. Chart:4847 Edn 09/22 (N22-182)
491.58 H0473.5	St. Phillips Wharf Light	47 35 34.0 052 53 12.0	Fl G 4s	Cylindrical Mast. 2.6	Seasonal. Chart:4847 Edn 09/22 (N22-187)
493.52 H0469	Bauline North Breakwater Light	47 43 22.0 052 50 05.0	Fl G 4s	3.2	2	Mast. 2.3	Seasonal. Chart:4847 Edn 09/22 (N22-184)
493.54	Bauline Wharf Light	47 43 21.7 052 50 04.3	Fl R 4s	2	Cylindrical mast. 2.3	Flash 1 s; eclipse 3 s. Radar reflector. Seasonal. Chart:4847 Edn 09/22 (N22-185)
498.2 H0474.3	Foxtrap Inner Breakwater Light	47 30 49.0 052 59 45.3	Fl G 4s	4.2	2	Mast. 2.6	Seasonal. Chart:4847 Edn 09/22 (N22-186)

CAPE ST. FRANCIS TO RENEWS (LL 499 – 516)

509.11	Ferryland Head Wharf	47 01 24.5 052 52 52.4	Fl G 4s	2	Pipe tower.	Flash 1 s; eclipse 3 s. Operates 24 h. Year round. Chart:4845 Edn 09/22 (N22-126)
--------	-------------------------	---------------------------	---------	-------	---	-------------	---

ATLANTIC COAST

PRINCE EDWARD ISLAND (LL 942 – 1084.7)

1071.35	Hardys Channel Fairway light buoy JS	NW. of Inlet. 46 39 15.0 063 51 09.1	Mo(A) W 6s	Red and white vertical striped spar, marked "JS".	Buoy may be repositioned due to shifting channel. Seasonal. Chart:4491 Edn 09/22 (G22-102)
1071.39	Hardys Channel light buoy JS2	46 39 13.9 063 51 16.6	Fl R 4s	Red spar, marked "JS2".	Buoy may be repositioned due to shifting channel. Seasonal. Chart:4491 Edn 09/22 (G22-103)
1071.41	Hardys Channel light buoy JS3	46 39 12.0 063 51 13.6	Q G 1s	Green spar, marked "JS3".	Buoy may be repositioned due to shifting channel. Seasonal. Chart:4491 Edn 09/22 (G22-104)

Notices to Mariners – Monthly Eastern Edition
Section 5: List of Lights, Buoys and Fog Signals Corrections

No.	Name	Position ----- Latitude N. Longitude W.	Light Characteristics	Focal Height in m. above water	Nomi- nal Range	Description ----- Height in meters above ground	Remarks ----- Fog Signals
1071.42	Hardys Channel light buoy JS4	46 39 08.5 063 51 28.0	Fl R 4s	Red spar, marked "JS4".	Buoy may be repositioned due to shifting channel. Seasonal. Chart:4491 Edn 09/22 (G22-105)
1071.45	Hardys Channel light buoy JS5	46 39 07.4 063 51 25.3	Fl G 4s	Green spar, marked "JS5".	Buoy may be repositioned due to shifting channel. Seasonal. Chart:4491 Edn 09/22 (G22-106)
1071.5	Hardys Channel light buoy JS7	46 39 04.4 063 51 39.3	Fl G 4s	Green spar, marked "JS7".	Buoy may be repositioned due to shifting channel. Seasonal. Chart:4491 Edn 09/22 (G22-107)
1071.52	Hardys Channel light buoy JS8	46 39 09.0 063 51 50.3	Fl R 4s	Red spar, marked "JS8".	Buoy may be repositioned due to shifting channel. Seasonal. Chart:4491 Edn 09/22 (G22-108)

NORTHUMBERLAND STRAIT – WEST (LL 1085 – 1165.9)

1097 H1319	Botsford Breakwater	On SE. corner of breakwater. 46 10 07.2 063 56 01.1	Fl R 4s	6.0	3	Pipe swing pole. 5.3	Flash 1 s; eclipse 3 s. Year round. Chart:4406 Edn 09/22 (G22-101)
1154	Goulet de Terre- noire light buoy XX4	46 46 05.6 064 50 49.7	Fl R 4s	Red, marked "XX4".	Buoy may be repositioned due to shifting channel. Seasonal. Chart:N/A Edn 09/22 (G22-090)
1154.2	Kouchibouguacis River light buoy XX19	46 45 58.6 064 51 34.9	Q G 1s	Green, marked "XX19".	Buoy may be repositioned due to shifting channel. Seasonal. Chart:N/A Edn 09/22 (G22-092)
1154.4	Goulet de Terre- noire light buoy XX24	46 46 06.0 064 51 30.8	Q R 1s	Red, marked "XX24".	Buoy may be repositioned due to shifting channel. Seasonal. Chart:N/A Edn 09/22 (G22-091)
1154.5	Goulet de Terre- noire light buoy XX36	46 46 21.5 064 52 27.1	Q R 1s	Red, marked "XX36".	Buoy may be repositioned due to shifting channel. Seasonal. Chart:N/A Edn 09/22 (G22-094)
1154.95	Kouchibouguacis River light buoy XX43	46 46 11.3 064 54 44.6	Fl G 4s	Green, marked "XX43".	Buoy may be repositioned due to shifting channel. Seasonal. Chart:N/A Edn 09/22 (G22-089)

Notices to Mariners – Monthly Eastern Edition
Section 5: List of Lights, Buoys and Fog Signals Corrections

No.	Name	Position ----- Latitude N. Longitude W.	Light Characteristics	Focal Height in m. above water	Nomi- nal Range	Description ----- Height in meters above ground	Remarks ----- Fog Signals
1157	Kouchibouguac Gully light buoy XY2	46 50 05.8 064 53 53.9	Fl R 4s	Red spar, marked "XY2".	Buoy may be repositioned due to shifting channel. Seasonal. Chart:4906 Edn 09/22 (G22-084)
1157.33	Kouchibouguac Gully light buoy XY4	46 49 59.8 064 54 02.4	Fl R 4s	Red, marked "XY4".	Buoy may be repositioned due to shifting channel. Seasonal. Chart:4906 Edn 09/22 (G22-085)
1158.5	Kouchibouguac Gully light buoy XY9	46 49 57.7 064 54 00.0	Fl G 4s	Green, marked "XY9".	Buoy may be repositioned due to shifting channel. Seasonal. Chart:4906 Edn 09/22 (G22-086)
1158.6	Kouchibouguac Gully light buoy XY17	46 50 04.0 064 54 46.1	Fl G 4s	Green, marked "XY17".	Buoy may be repositioned due to shifting channel. Seasonal. Chart:N/A Edn 09/22 (G22-087)
GULF OF ST. LAWRENCE (LL 1169.1 – 1426, 1477.5 – 1584)							
1248	Shippegan Fairway light buoy TJ	S. entrance to Shippegan Gully. 47 42 33.4 064 39 30.5	Mo(A) W 6s	Red and white vertical striped spar, marked "TJ".	Buoy may be repositioned due to shifting channel. Seasonal. Chart:4920 Edn 09/22 (G22-095)
1248.133	Shippegan Gully light buoy TJ7	47 42 46.5 064 39 49.1	Q G 1s	Green spar, marked "TJ7".	Buoy may be repositioned due to shifting channel. Operates 24 h. Seasonal. Chart:N/A Edn 09/22 (G22-096)
1258.125	Shippegan Gully light buoy TJ35	47 43 47.2 064 40 05.6	Q G 1s	Green spar, marked "TJ35".	Buoy may be repositioned due to shifting channel. Seasonal. Chart:4920 Edn 09/22 (G22-097)
1273.15	Shippegan Flat light buoy EC4	Miscou Harbour. 47 53 12.3 064 40 04.6	Fl R 4s	Red, marked "EC4".	Seasonal. Chart:4913 Edn 09/22 (G22-093)
1282.5	Shippegan Channel light buoy EG8	47 50 41.0 064 43 42.9	Q R 1s	Red spar, marked "EG8".	Buoy may be repositioned due to shifting channel. Seasonal (in place year round). Chart:4913 Edn 09/22 (G22-099)
1561.71	Fairway light buoy CHE						Delete from list. Chart:4468 Edn 09/22 (Q22-042)

Notices to Mariners – Monthly Eastern Edition
Section 5: List of Lights, Buoys and Fog Signals Corrections

No.	Name	Position ----- Latitude N. Longitude W.	Light Characteristics	Focal Height in m. above water	Nomi- nal Range	Description ----- Height in meters above ground	Remarks ----- Fog Signals
1561.72	Light buoy CS3						Delete from list. Chart:4468 Edn 09/22 (Q22-043)
1561.74	Chevery light buoy CS4	Entrance of Rivière Nétagamiou. 50 27 20.7 059 37 43.2	Fl R 4s	Red, marked "CS4".	Seasonal. Chart:4468 Edn 09/22 (Q22-040)
1561.76	Chevery light buoy CS6	Entrance of Rivière Nétagamiou. 50 27 28.2 059 37 33.1	Fl R 4s	Red, marked "CS6".	Seasonal. Chart:4468 Edn 09/22 (Q22-041)

ST. LAWRENCE RIVER (LL 1584.5 – 1772, 1823.8 – 2185.7, 2273 – 2365.95)

1962 H2324	Pointe à Puiseaux (Sillery)	Sillery, W. of wharf. 46 46 19.4 071 14 35.9	Fl R 5s	10.6	10	Pipe swing pole. 7.8	Flash 1 s; eclipse 4 s. Operates 24 h. Year round. Chart:1316 Edn 09/22 (Q22-030)
---------------	--------------------------------	--	---------	------	----	-------------------------	---

INLAND WATERS

RAINY LAKE (LL 1445 – 1468)

1468	Fort Frances Ranier Bridge						Delete from list. Chart:6108 Edn 09/22 (D22-034)
------	-------------------------------	--	--	--	--	--	--