



UPDATE ON THE STATUS OF CUSK (*BROSME BROSME*) IN NAFO DIVISIONS 4VWX5Z FOR 2021

Context

Cusk, *Brosme brosme*, is caught as bycatch in certain directed fisheries. Most landings are in the groundfish longline fisheries. Commercial catch rates for Cusk declined after the 1980s. Changes to management measures (e.g., reductions to trip limits, overall caps, and bycatch percentages) may have contributed to this reduction in catch rates (and landings); however, it is thought the decline in Catch Per Unit Effort (CPUE) is also due to a decline in Cusk abundance (Harris and Hanke 2010). The extent of the decline in abundance is not known.

The Industry-DFO Halibut Fixed Station Longline Survey (Halibut Survey) catch per station has been accepted as the ongoing index for monitoring Cusk biomass. The Upper Stock Reference (USR) and Limit Reference Point (LRP) for Cusk were set at 26.6 kg and 13.3 kg, respectively (Harris et al. 2012). The 3-year geometric mean of the biomass index was accepted as the metric for monitoring Cusk status relative to the USR and LRP. Cusk biomass has remained above the LRP since 2008 (DFO 2014).

Cusk was assessed as threatened by the Committee on the Status of Endangered Wildlife in Canada (COSEWIC) in 2003 and later reassessed as endangered (COSEWIC 2012). In response to the 2003 assessment, the Governor in Council decided in 2013 not to add Cusk to the List of Wildlife Species at Risk set out in Schedule 1 of the *Species at Risk Act* (SARA; Minister of Justice, Canada 2013).

DFO's Resource Management Sector asked Science to determine what the 3-year geometric mean of the Cusk index is from the Halibut Survey relative to the USR and the LRP. The information will be used by DFO Resource Management as guidance in discussions with various industry stakeholders on recommendations for management measures.

The current 3-year geometric mean (2019–2021) of the Cusk biomass index remains above the LRP at 13.8 kg.

This Science Response Report results from the Regional Science Response Process of December 15, 2021, on the Stock Status Update of Cusk in 4VWX5 in the Maritimes Region.

Background

The Halibut Survey (Smith 2016), a longline survey that samples an area from the Grand Banks of Newfoundland, along the Scotian Shelf to Georges Bank, is considered to provide a useful index of trends in Cusk abundance in Northwest Atlantic Fisheries Organization (NAFO) Divisions 4VWX5 since 1999. Longline gear is an effective sampling tool for Cusk as

demonstrated by the commercial fishery; over 90% of landings were made by the longline fleets (Harris and Hanke 2010).

The Halibut Survey is conducted annually, generally from May to July. Variations in the Halibut Survey fishing protocol include a shift to the use of larger hook size, larger geographic area that each 'station' encompasses, lack of consistency in stations sampled, and variation in soak time and bait type. These variations are not accounted for in the Cusk biomass index and would contribute to the high variability and could bias estimates.

Description of the Fishery

In the commercial groundfish fisheries, Cusk are caught primarily in summer and fall, with very limited landings in winter (Table 1). While the fishing year runs from April 1st through to March 31st of the following year, landings from April–November comprise between 93% and 98% of the fishing year landings from 2007–2015. Cusk landings fell from over 1,000 metric tonnes (mt) in 2007 to a low of 90 mt in 2019. Landings have increased slightly since then, but they remain very low in a historical context. In 2021, landings were 129 mt by the end of October. The steep decline in longline effort directed at Cod, Haddock, and Pollock since the early 2000s has likely contributed to this decline. Cusk bycatch from the longline fleet now comes primarily from the Halibut directed fishery. Cusk landings are currently managed by means of bycatch caps and trip limits.

Table 1. Cusk landings in metric tonnes per calendar year from 2007 to 2021.

| Year | 4X5YZ | 4VW | Total |
|------|-------|-----|-------|
| 2007 | 963 | 55 | 1,018 |
| 2008 | 561 | 48 | 609 |
| 2009 | 535 | 38 | 573 |
| 2010 | 439 | 29 | 468 |
| 2011 | 444 | 34 | 477 |
| 2012 | 454 | 37 | 491 |
| 2013 | 338 | 44 | 382 |
| 2014 | 181 | 25 | 206 |
| 2015 | 151 | 38 | 189 |
| 2016 | 146 | 25 | 171 |
| 2017 | 112 | 27 | 140 |
| 2018 | 109 | 18 | 127 |
| 2019 | 72 | 18 | 90 |

| Year | 4X5YZ | 4VW | Total |
|------|-------|-----|-------|
| 2020 | 118 | 22 | 137 |
| 2021 | 107 | 22 | 129 |

Analysis and Response

The 57 fixed stations from the Halibut Survey that have been sampled in all years since 1999 are used to calculate the survey indices for Cusk (Harris et al. 2012). In 2014, data from Station 159 were excluded due to serious damage to the gear, which resulted in a non-typical catch. The long-term mean for station 159 is 13.2 kg.

The subset of stations includes some of the preferred habitat for Cusk, such as the deeper areas along the shelf edge, although only a few of these 57 stations are in the Gulf of Maine, the area of highest commercial landings. The catches at each station (standardized to Catch [kg]/1,000 hooks) were used to calculate a biomass index. When the number of hooks fished was not recorded, it was assumed that the survey standard of 1,000 hooks was fished in the single set. In some cases, stations were fished by 2 or 3 sets of fewer hooks that sum to roughly 1,000 hooks. In these cases, all of these sets were included in calculating the standardized catch for the station.

The recent trend in the Halibut Survey (3-year running geometric mean) was used to determine the status of the Cusk biomass in relation to the reference points. This index has been at, or above, the proposed LRP since 2008 (Figure 1). A high level of uncertainty in the annual biomass indices is indicated by the wide confidence interval.

Indicator of Stock Status

The 3-year geometric mean (2019–2021) of the survey index for Cusk is 13.8 kg (Figure 1).

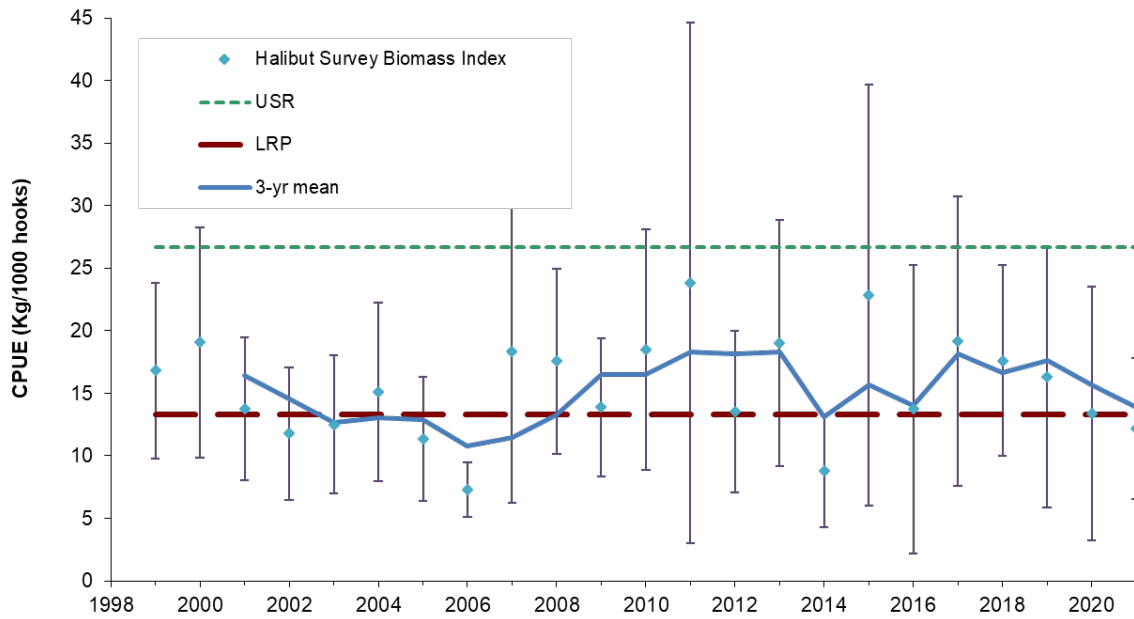


Figure 1. The blue diamonds represent the biomass index for Cusk in the Halibut Survey, including the 95% confidence interval, and the heavy blue line represents the 3-year geometric mean of the index, the green dashed reference line represents the Upper Stock Reference (USR) point, and the red dotted line represents the Limit Reference Point (LRP).

Conclusions

The 3-year geometric mean (2019–2021) of the Halibut Survey biomass index for Cusk has declined but remains above the LRP at 13.8 kg.

Contributors

| Name | Affiliation |
|---------------------------|---|
| Donald Clark (Lead) | DFO Science, Maritimes Region |
| Catriona Regnier-McKellar | DFO Science, Maritimes Region |
| Daphne Themelis | DFO Science, Maritimes Region |
| Allan Debertain | DFO Science, Maritimes Region |
| Monica Finley | DFO Science, Maritimes Region |
| Michelle Greenlaw | DFO Science, Maritimes Region |
| Kayla Silver | DFO Science, Maritimes Region |
| Kelly Kraska | DFO Science, Maritimes Region |
| Peter Comeau | DFO Science, Maritimes Region |
| Rabindra Singh | DFO Science, Maritimes Region |
| Penny Doherty | DFO Resource Management, Maritimes Region |
| Candace Nickerson | DFO Resource Management, Maritimes Region |

Approved by

Francine Desharnais
A/Regional Director of Science, DFO Maritimes Region
Dartmouth, Nova Scotia
Ph. 902-426-3490

Date: January 13, 2022

Sources of Information

- COSEWIC. 2012. [COSEWIC Assessment and Status Report on the Cusk \(*Brosme brosme*\) in Canada](#). Committee on the Status of Endangered Wildlife in Canada. Ottawa. x + 85 p.
- DFO. 2014. [Update to the Recovery Potential for Cusk in Canadian Waters](#). DFO Can. Sci. Advis. Sec. Sci. Advis. Rep. 2014/048.
- Harris, L.E., and Hanke, A.R. 2010. [Assessment of the Status, Threats and Recovery Potential of Cusk \(*Brosme brosme*\)](#). DFO Can. Sci. Advis. Sec. Res. Doc. 2010/004.
- Harris, L.E., Somers, G., and Clark, D.S. 2012. [Reference Points for Cusk \(*Brosme brosme*\) in NAFO Divisions 4VWX5Z Under the Precautionary Approach Framework](#). DFO Can. Sci. Advis. Sec. Res. Doc. 2012/026: iii + 10 p.

Minister of Justice, Canada. 2013. [Consolidation List of Wildlife Species at Risk \(Decisions Not to Add Certain Species\) Order](#). C.R.C., Species at Risk Act, Registration 2013-03-27, SI/2013-27. Ottawa, Canada.

Smith, S. J. 2016. [Review of the Atlantic Halibut longline survey index of exploitable biomass](#). Can. Tech. Rep. Aquat. Sci. 3180: v + 56 p.

This Report is Available from the:

Center for Science Advice (CSA)
Maritimes Region
Fisheries and Oceans Canada
Bedford Institute of Oceanography
1 Challenger Drive, PO Box 1006
Dartmouth, Nova Scotia
Canada B2Y 4A2

E-Mail: MaritimesRAP.XMAR@dfo-mpo.gc.ca
Internet address: www.dfo-mpo.gc.ca/csas-sccs/

ISSN 1919-3769

ISBN 978-0-660-42237-4 Cat. No. Fs70-7/2022-014E-PDF

© Her Majesty the Queen in Right of Canada, 2022



Correct Citation for this Publication:

DFO. 2022. Update on the status of Cusk (*Brosme brosme*) in NAFO Divisions 4VWX5Z for 2021. DFO Can. Sci. Advis. Sec. Sci. Resp. 2022/014.

Aussi disponible en français :

MPO. 2022. Mise à jour sur l'état du stock de brosme (*Brosme brosme*) dans les divisions 4VWX5Z de 'OPANO pour 2021. Secr. can. des avis sci. du MPO. Rép. des Sci. 2022/014.