

Descriptive Notes

The map area is located in southern Northwest Territories and includes the town of Enterprise, situated along Highway 1...

During deglaciation, the retreating Laurentide ice Sheet blocked regional northwestern drainage, forcing glacial meltwater to drain westward along the ice margin...

As ice continued to retreat, a series of proglacial lakes developed along the ice margin, recorded by successive outlet channels, beach ridges, and discontinuous glaciolacustrine sediment cover...

Evolution, alluvial, and organic sediments represent late to post-glacial changes to the landscape. Eolian dunes were deposited from westerly katabatic winds and are commonly glaciolacustrine and glaciolacustrine sediments...

Acknowledgments

We would like to thank M. Pyne (Geological Survey of Canada), R. King (Memorial University), J. Sapers (Brock University), and J. Plafiddin (Carleton University) for their assistance in the field...

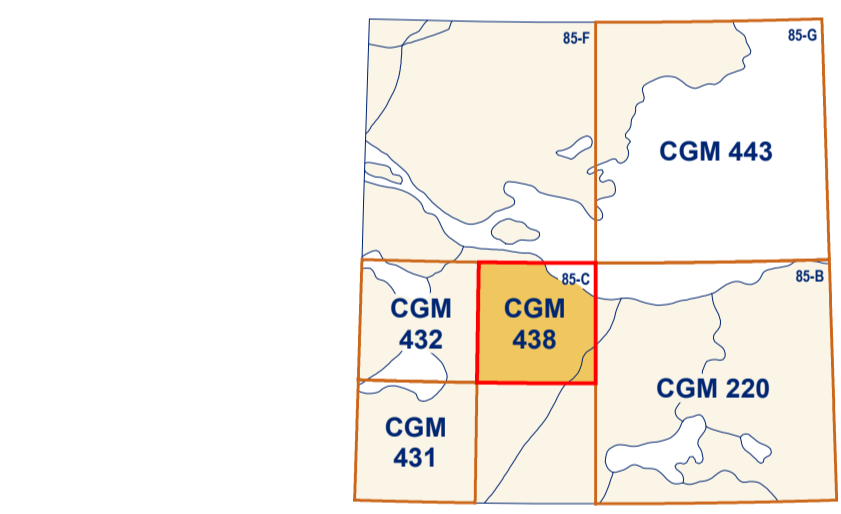
Suggested Readings

Paulen, R.C., Smith, I.R., and Day, S.J.A. (ed.), 2019. GEM-2 Southern Mackenzie Surficial Activity 2018 report: surficial geology and heavy mineral studies in southern Northwest Territories...

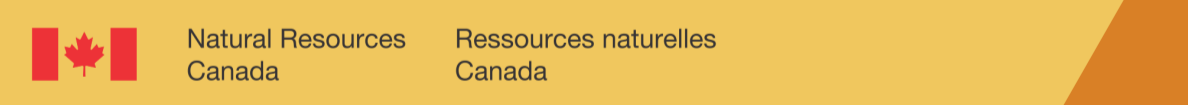
Abstract

The Enterprise map area is a low-relief terrain bisected by a prominent Devonian carbonate bedrock escarpment. Ice-flow indicators show a clockwise shift in Laurentide ice Sheet flow from southwest (230°) to west (280°) to northwest (305°)...

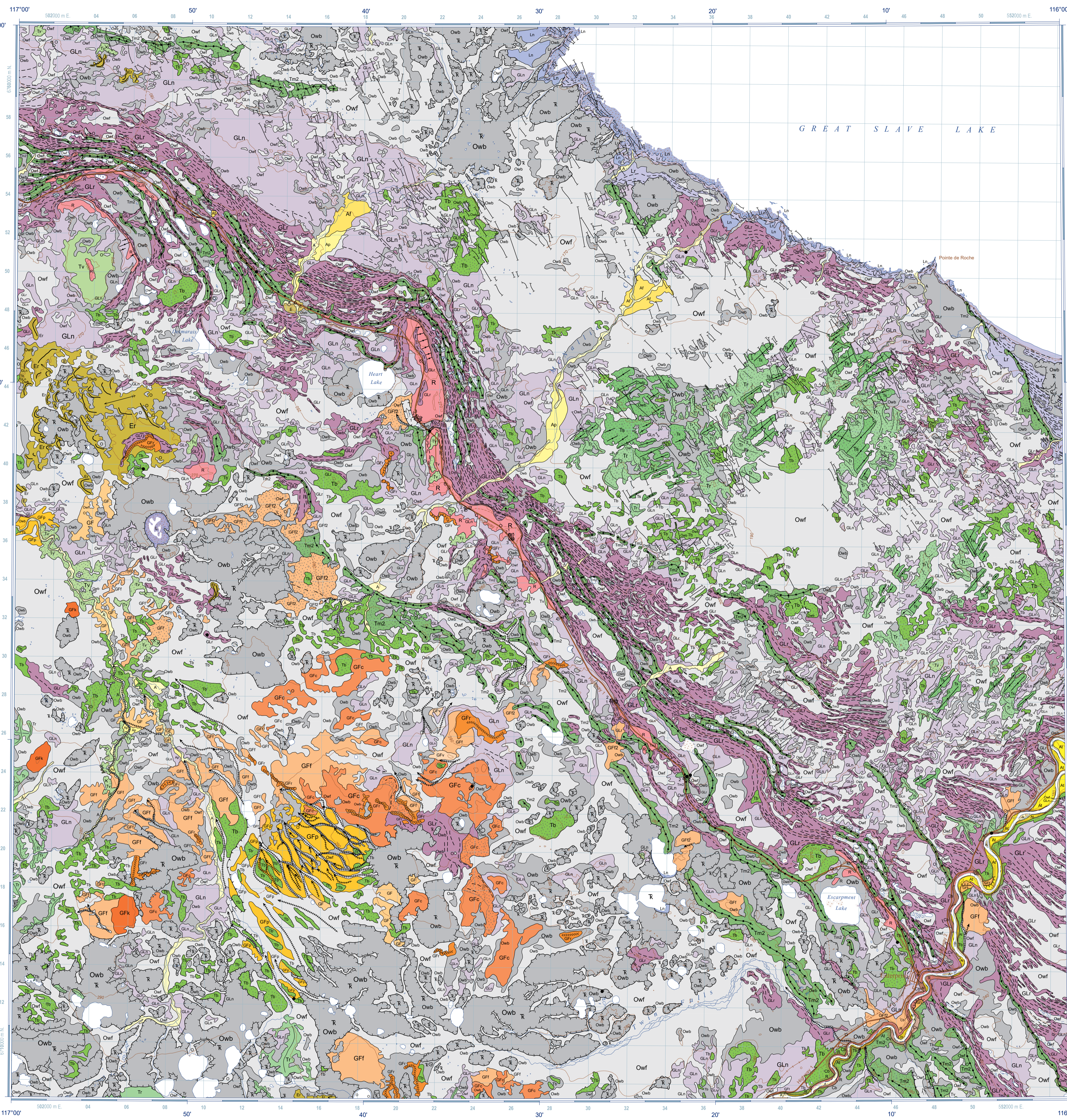
La région cartographique d'Enterprise présente un terrain à faible relief sectionné par un escarpement saillant formé de roches carbonatées du Dévonien. Les indicateurs d'écoulement glaciaire témoignent d'un changement de direction dans le sens horaire de l'écoulement de l'inlandsis laurentidien...



Catalogue No. M183-1438-2022E-PDF ISBN 978-0-660-39071-0 https://doi.org/10.4095/313419



CANADIAN GEOSCIENCE MAP 438 SURFICIAL GEOLOGY ENTERPRISE Northwest Territories NTS 85-C/9, 10, 15, and 16 1:100 000



QUATERNARY

- POST LAST GLACIATION: Owf (OwL), OwB, O. NONGLACIAL ENVIRONMENT: Erganic DEPOSITS: peat and muck; Fen DEPOSITS: semi-open peatlands; Bog DEPOSITS; Undifferentiated deposits; NONGLACIAL AND PROGLACIAL ENVIRONNMENTS: EOLIAN DEPOSITS; Lacustrine DEPOSITS; Beach DEPOSITS; Littoral and nearshore DEPOSITS; Undifferentiated sediments; COLLUVIAL DEPOSITS; Floodplain DEPOSITS; Fan DEPOSITS; Terrace DEPOSITS; Undifferentiated sediments; LACUSTRINE DEPOSITS; Beach sediments; Littoral and nearshore sediments; Undifferentiated sediments; POSTGLACIAL OR LATE WISCONSIN PROGLACIAL AND GLACIAL ENVIRONNMENTS: GLACIOLACUSTRINE SEDIMENTS; Beach sediments; Outwash plain sediments; Terrace sediments; Outwash-fan sediments; Ice-contact sediments; Kame terrace; Esker; Veneer; Undifferentiated sediments; Till DEPOSITS; Streamlined till; Veneer; Blanket; Undifferentiated sedimentary bedrock.

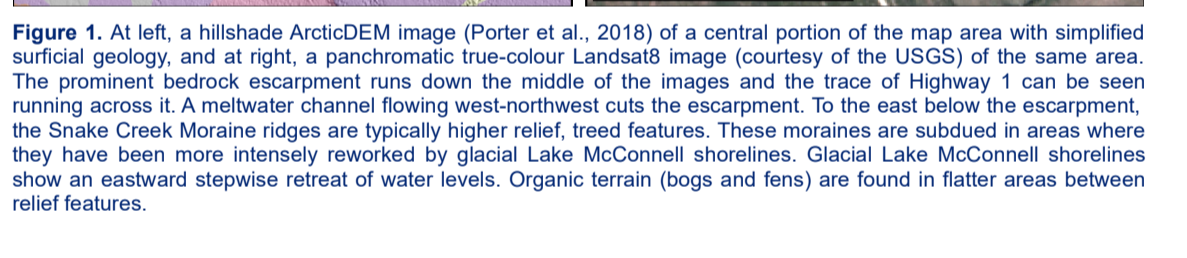


Figure 1. At left, a hillside ArctiDEM image (Porter et al., 2018) of a central portion of the map area with simplified surficial geology...

References

Bednarski, J.M., 2008. Landform assemblages produced by the Laurentide ice Sheet in northeastern British Columbia and adjacent Northwest Territories... Deblonde, C., Cookey, R.B., Ker, D.E., Campbell, J.E., Eagles, S., Everett, D., Huntley, D.H., Ingle, E., Parent, M., Poirieff, A., Robertson, L., Smith, I.R., and Weatherston, A., 2019. Surficial Data Model: the science language of the integrated Geological Survey of Canada data model for surficial geology maps...

Recommended citation Hagedorn, G.W., Smith, I.R., Paulen, R.C., and Ross, M., 2022. Surficial geology, Enterprise, Northwest Territories, NTS 85-C/9, 10, 15, and 16. Geological Survey of Canada, Canadian Geoscience Map 438, scale 1:100 000. https://doi.org/10.4095/328292

Authors: G.W. Hagedorn, I.R. Smith, R.C. Paulen, and M. Ross. Cartography by N. Côté. Scientific editing by A. Weatherston.

SURFICIAL GEOLOGY ENTERPRISE Northwest Territories NTS 85-C/9, 10, 15, and 16 1:100 000

Map projection Universal Transverse Mercator, zone 11 North American Datum. Base map at the scale of 1:50 000 from Natural Resources Canada, with modifications.

Title photograph: Section of the Snake Creek Moraine and glacial Lake McConnell beach ridges, northwest of Enterprise, Northwest Territories.

Data may include additional observations not portrayed on this map. See map info document accompanying the downloaded data for more information about this publication.



Geological Survey of Canada Canadian Geoscience Maps

