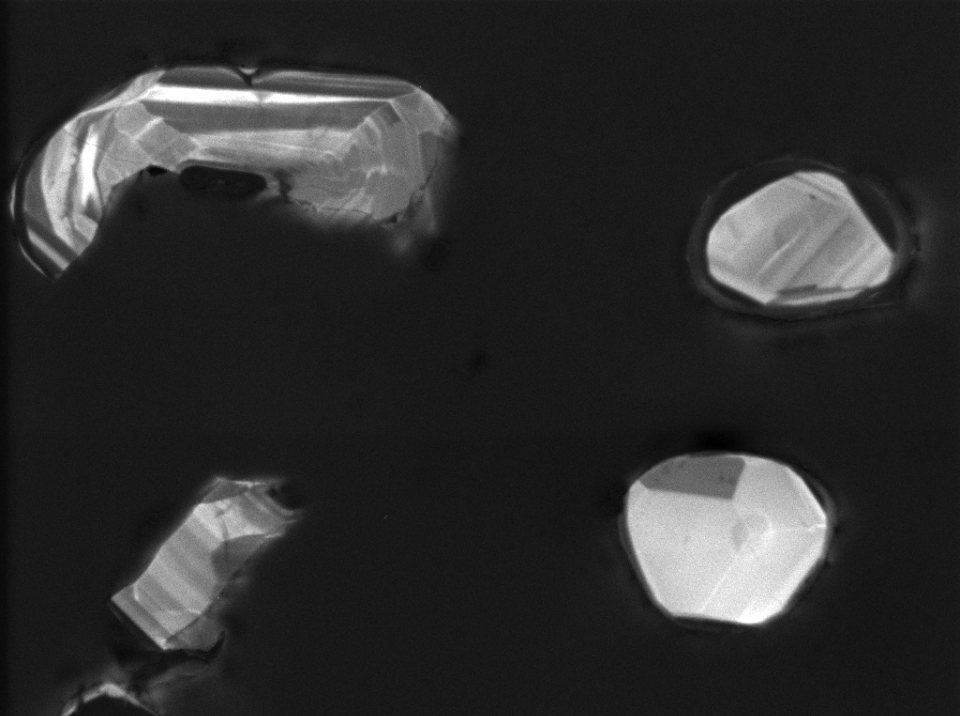


20  $\mu\text{m}^*$

File Name = 12414-01.tif



WD: 16.05 mm

View field: 451  $\mu\text{m}$

SEM MAG: 614 x

Det: CL



100  $\mu\text{m}$

MIRA3 TESCAN

12414-cl-1

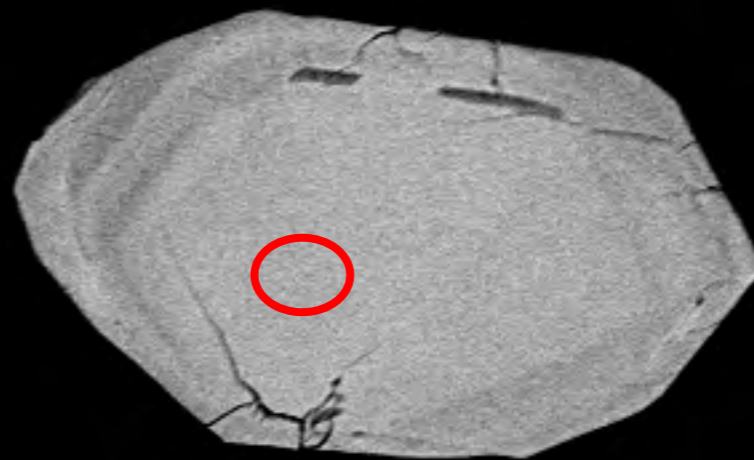
Date(m/d/y): 04/05/19

NRCan LMS GSC

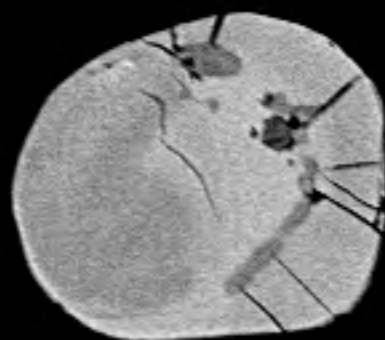




5



6



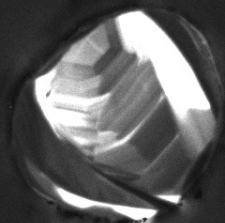
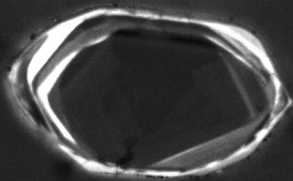
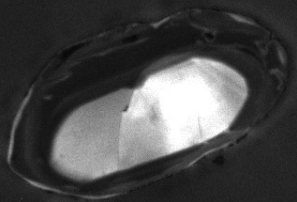
7



8

20  $\mu\text{m}^*$

File Name = 12414-02.tif



WD: 16.05 mm

View field: 509  $\mu\text{m}$

SEM MAG: 544 x

Det: CL

100  $\mu\text{m}$

MIRA3 TESCAN

12414-cl-2

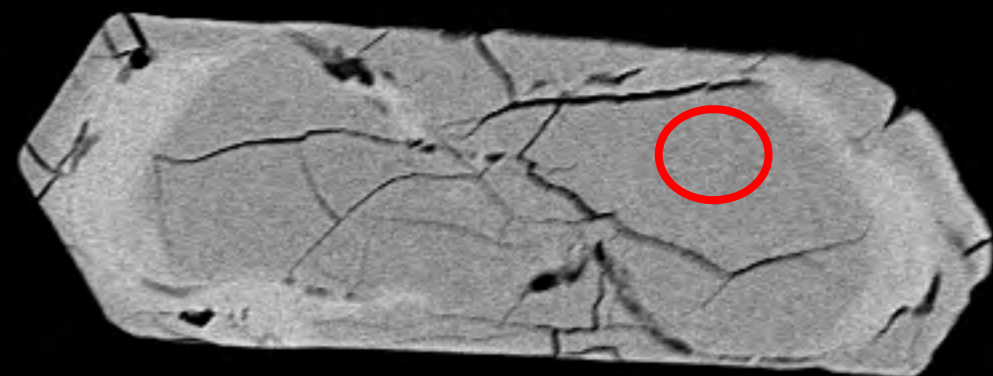
Date(m/d/y): 04/05/19

NRCan LMS GSC

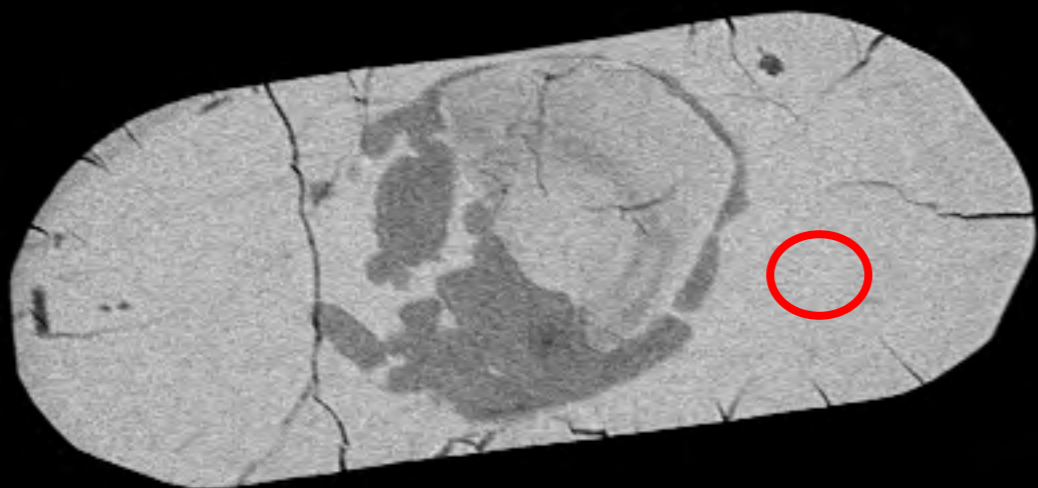




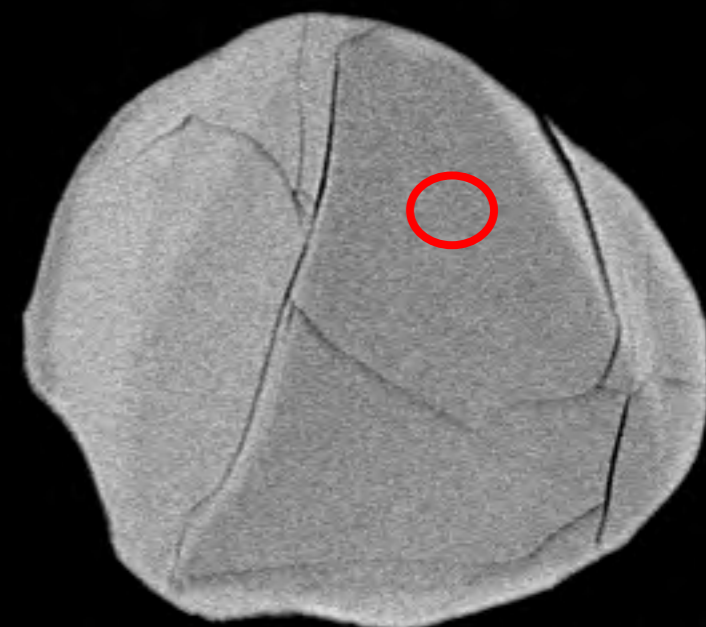
9



10



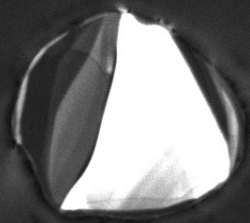
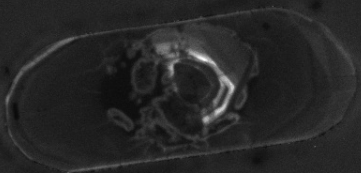
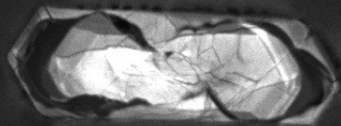
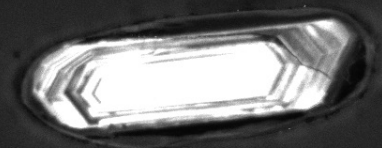
11



12

20  $\mu\text{m}^*$

File Name = 12414-03.tif



WD: 16.05 mm

View field: 563  $\mu\text{m}$

SEM MAG: 492 x

Det: CL



100  $\mu\text{m}$

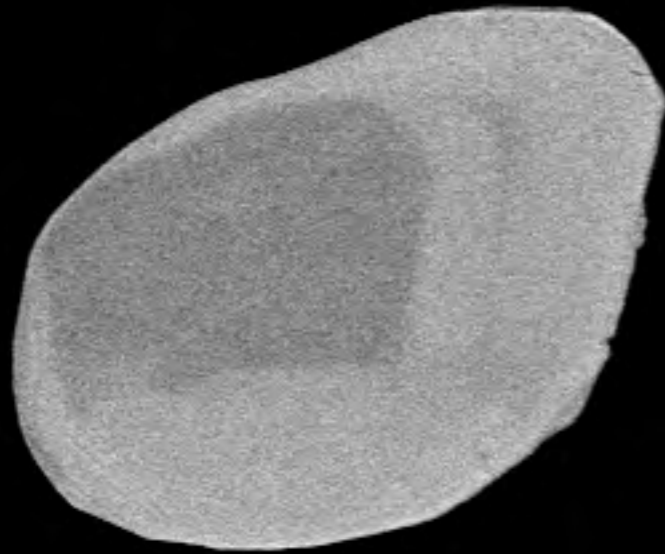
MIRA3 TESCAN

12414-cl-3

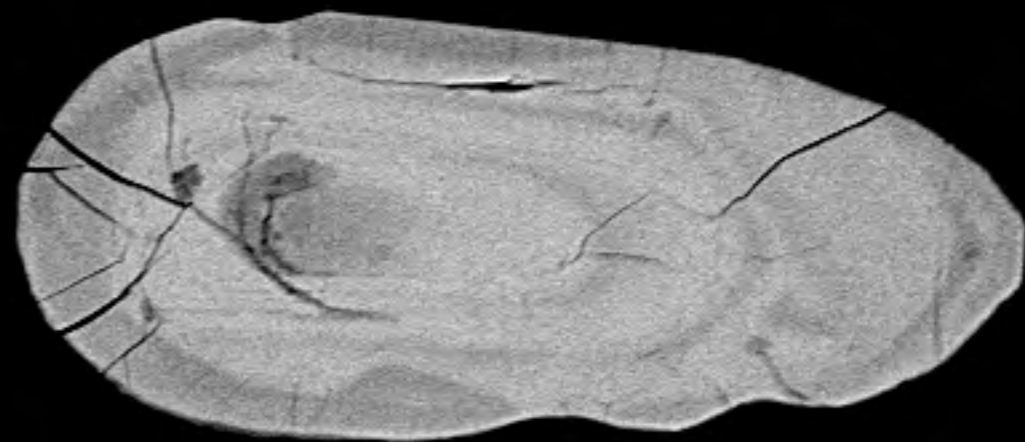
Date(m/d/y): 04/05/19

NRCan LMS GSC

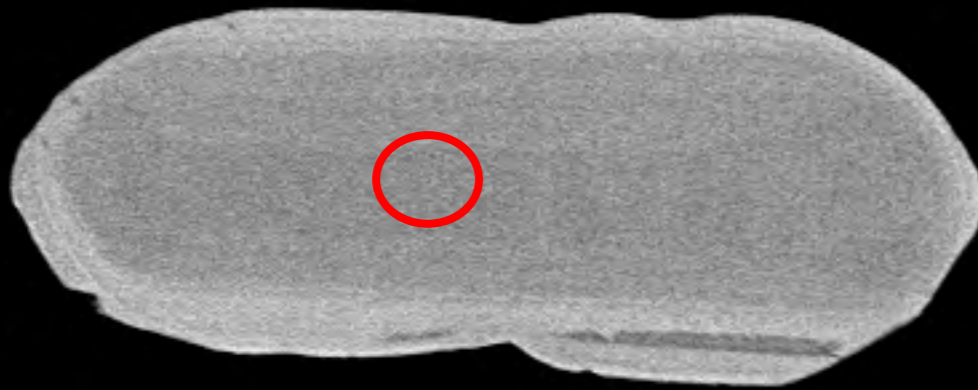




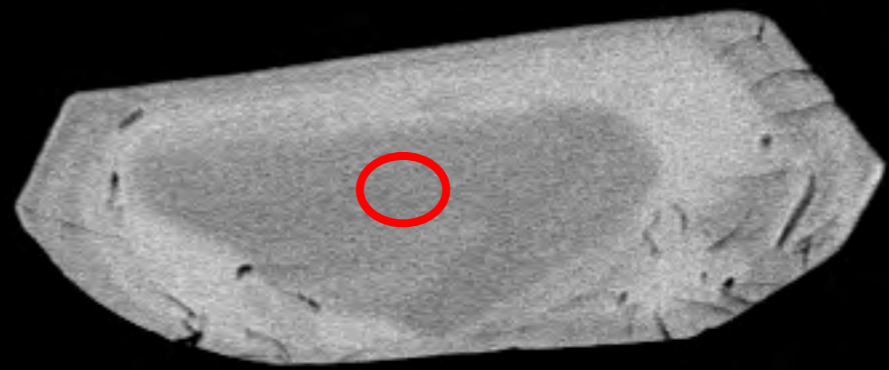
13



14



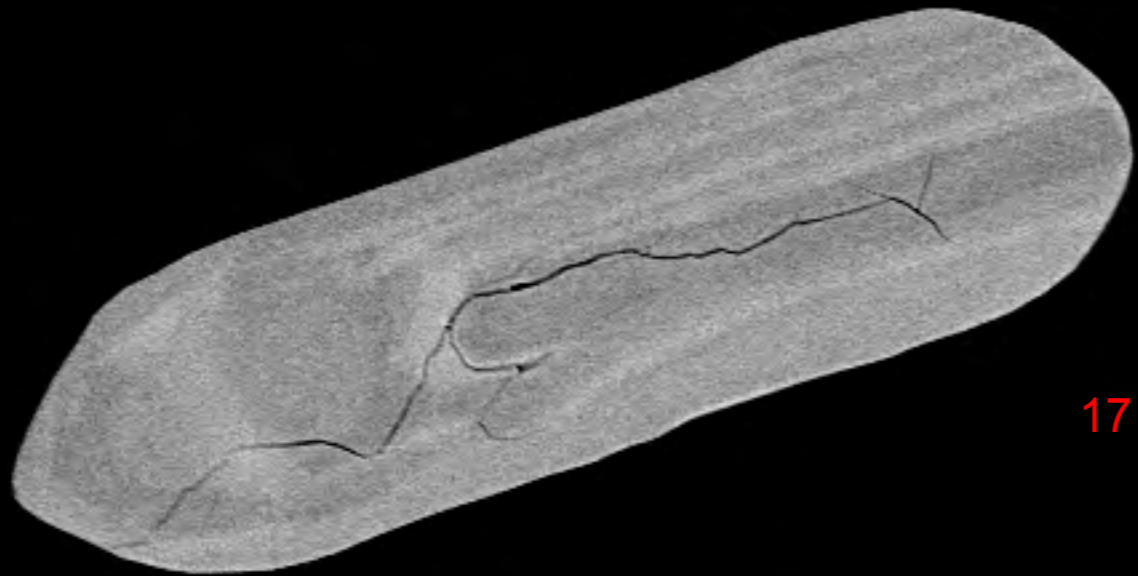
15



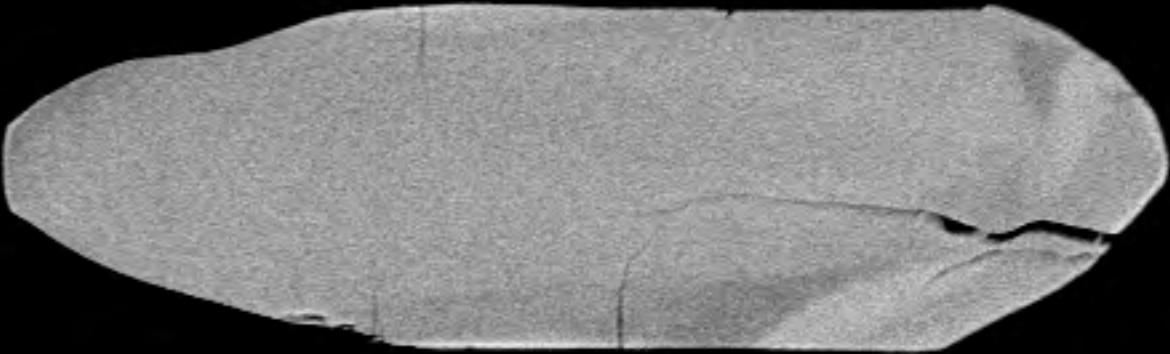
16

20  $\mu\text{m}^*$

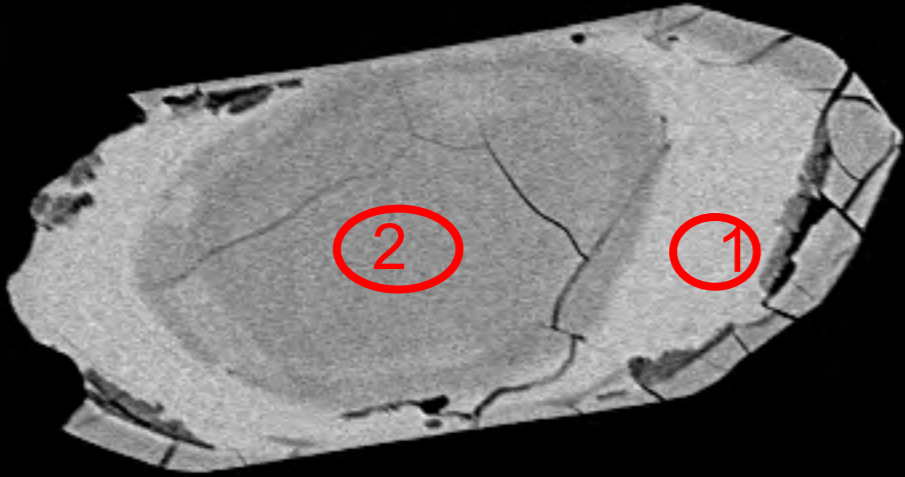
File Name = 12414-04.tif



17



18



19

2

1



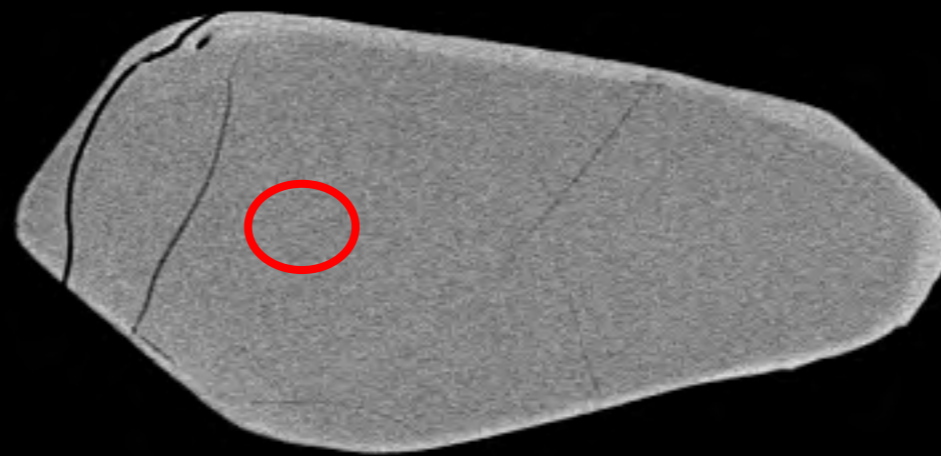
20



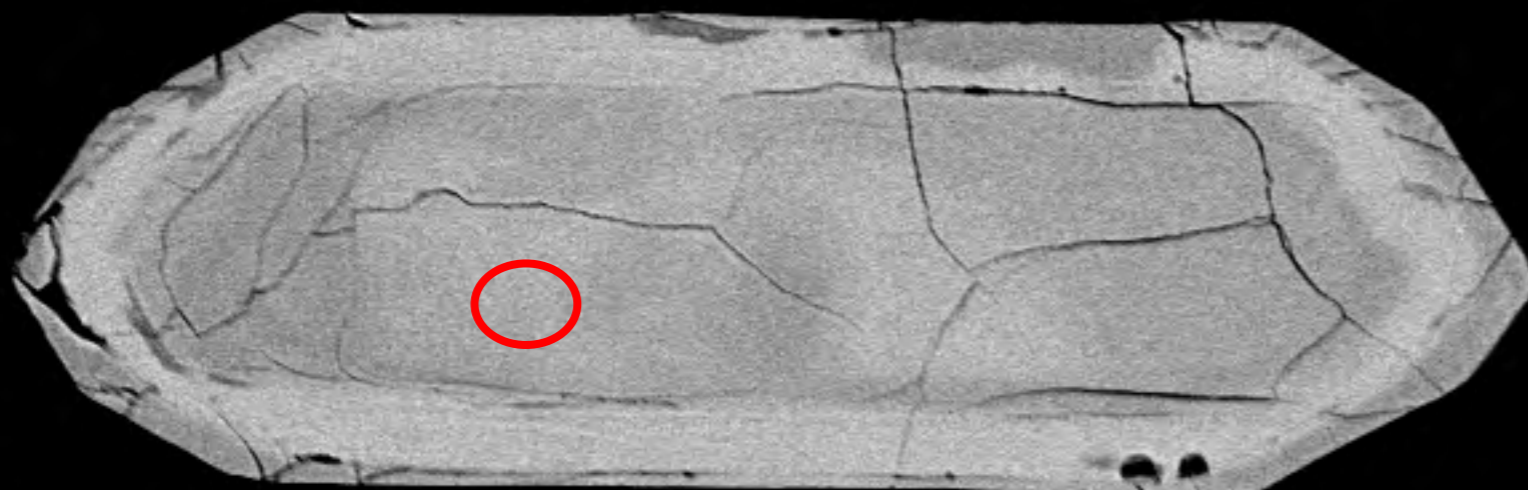
20  $\mu\text{m}^*$

File Name = 12414-05.tif





21



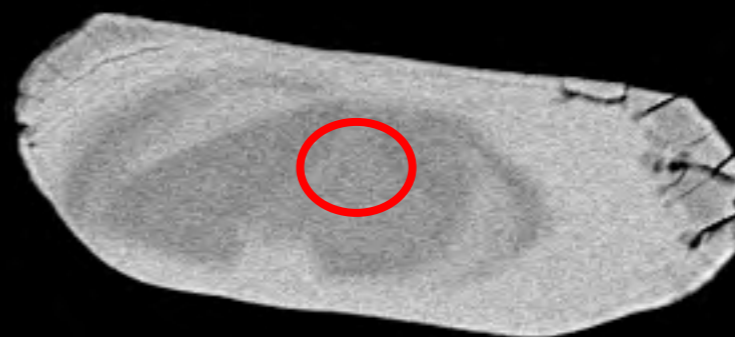
22

20  $\mu\text{m}^*$

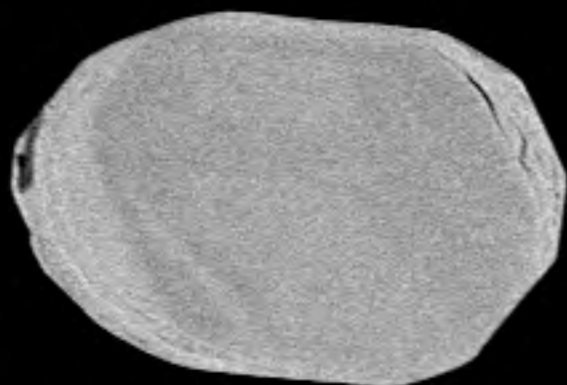
File Name = 12414-06.tif



23



24



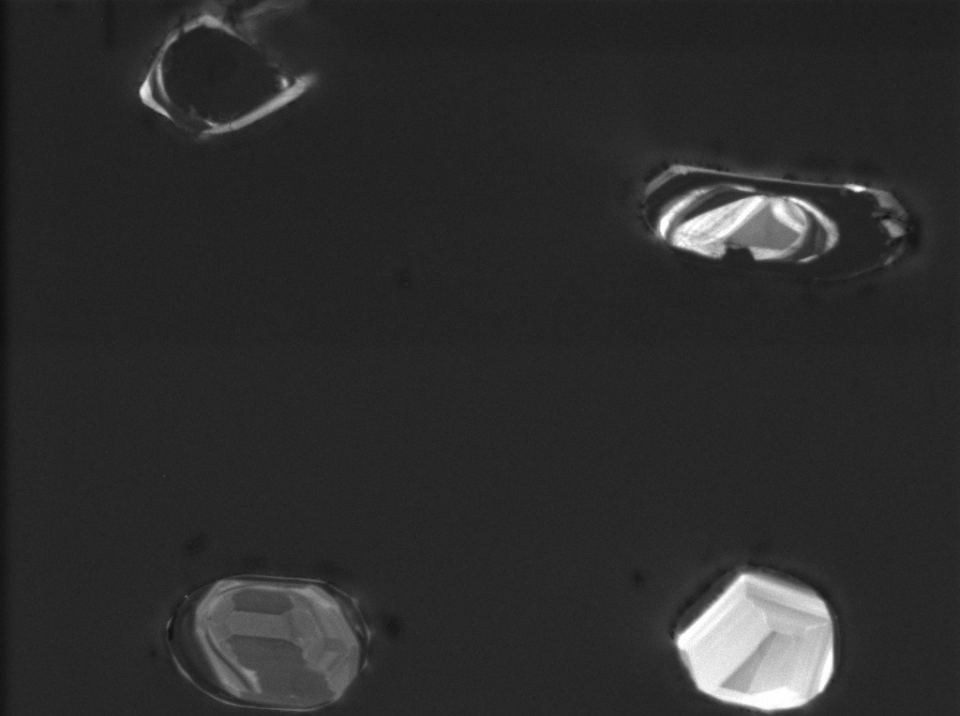
25



26

20  $\mu\text{m}^*$

File Name = 12414-07.tif



WD: 16.05 mm

View field: 502  $\mu\text{m}$

SEM MAG: 552 x

Det: CL



100  $\mu\text{m}$

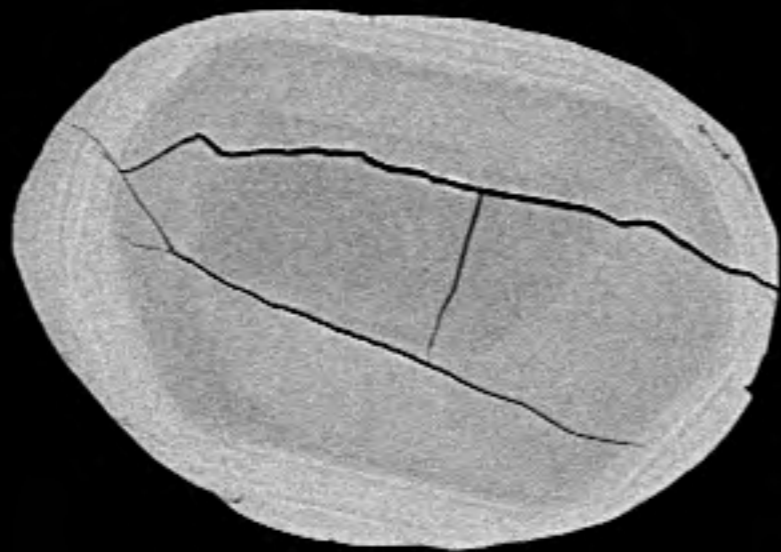
MIRA3 TESCAN

12414-cl-7

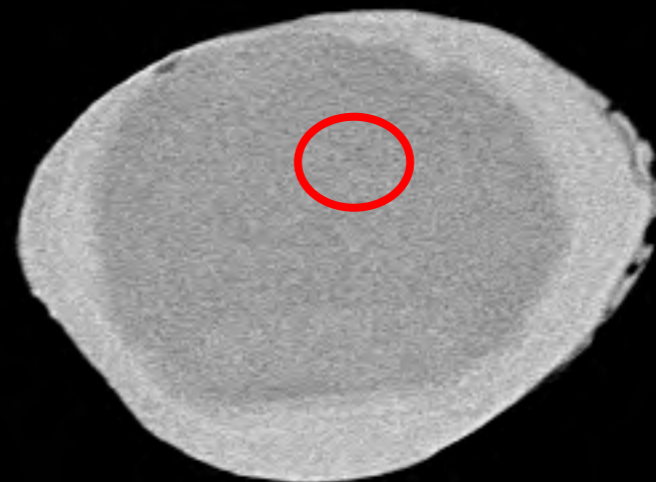
Date(m/d/y): 04/05/19

NRCan LMS GSC

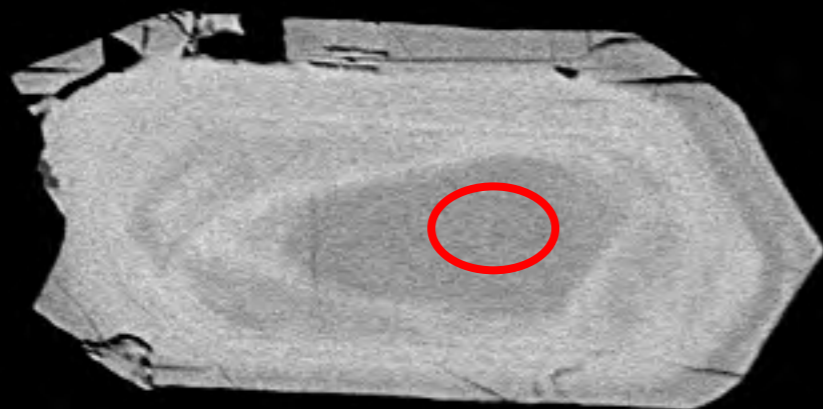




27

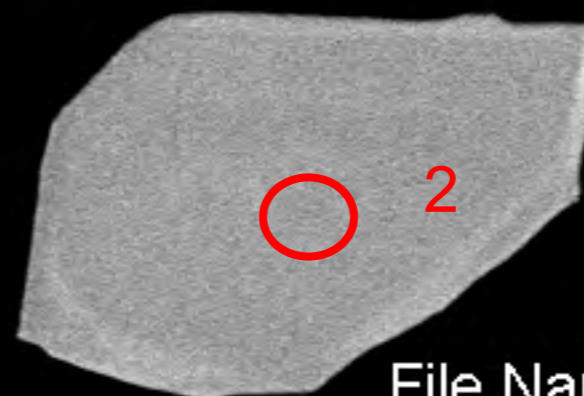


28



29

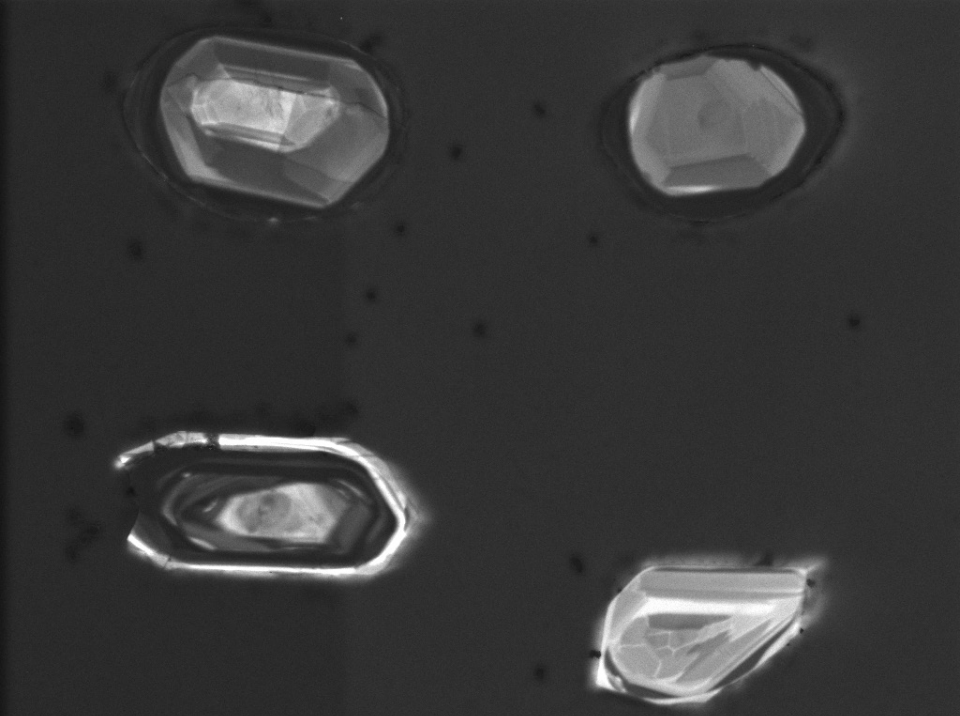
30



2

20  $\mu\text{m}^*$

File Name = 12414-08.tif



WD: 16.05 mm

View field: 502  $\mu\text{m}$

SEM MAG: 552 x

Det: CL

12414-cl-8

Date(m/d/y): 04/05/19

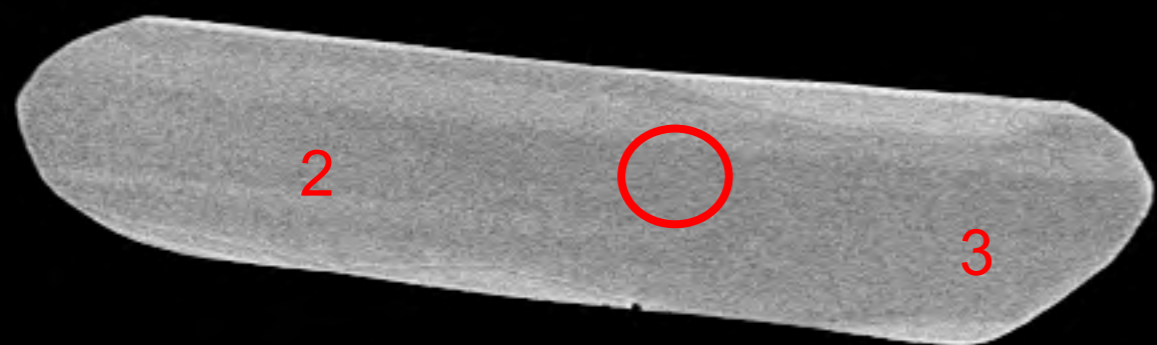


100  $\mu\text{m}$

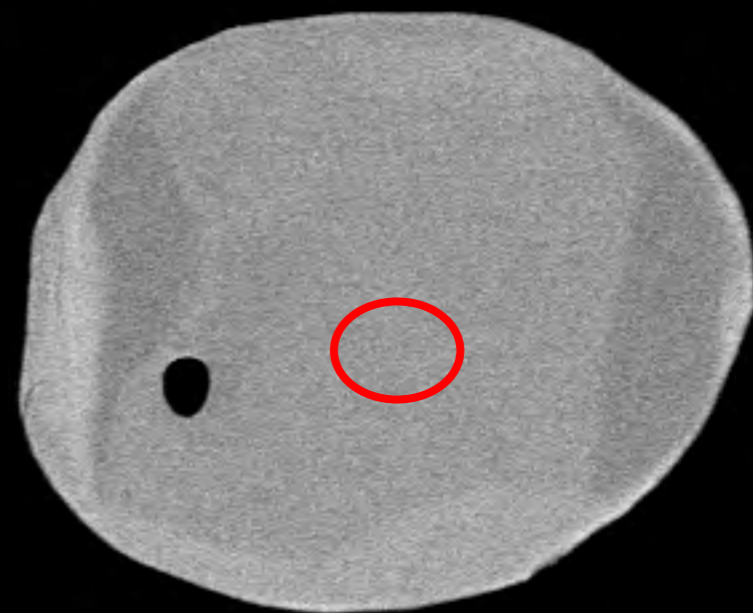
MIRA3 TESCAN

NRCan LMS GSC

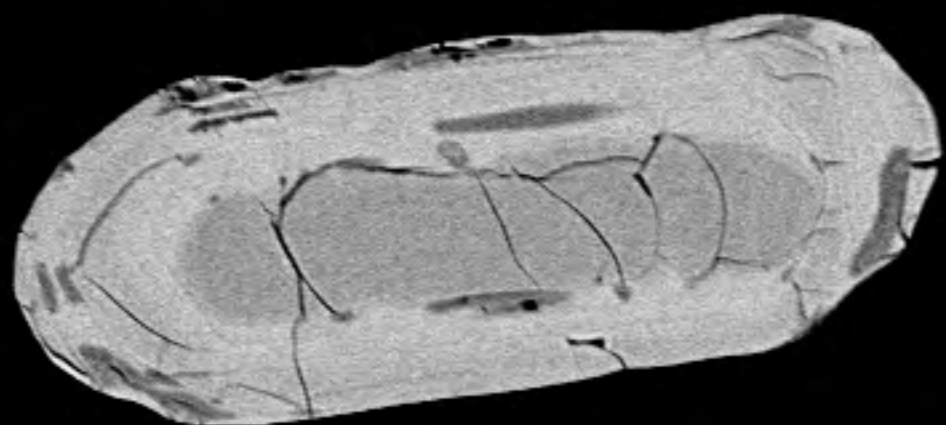




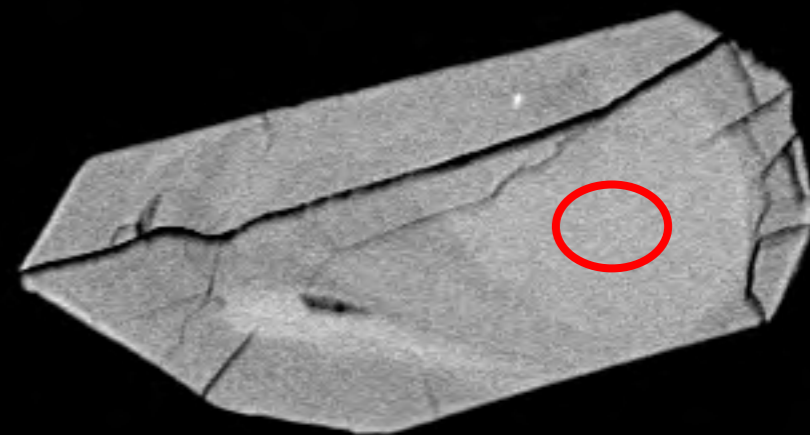
31



32



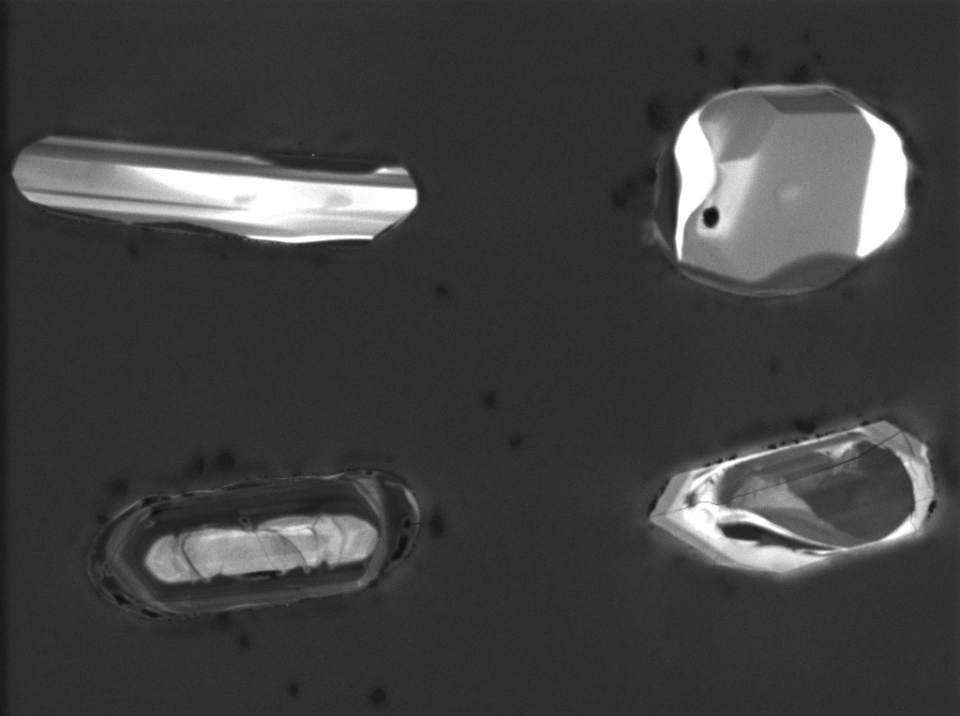
33



34

20  $\mu\text{m}^*$

File Name = 12414-09.tif



WD: 16.05 mm

View field: 514  $\mu\text{m}$

SEM MAG: 538 x

Det: CL



100  $\mu\text{m}$

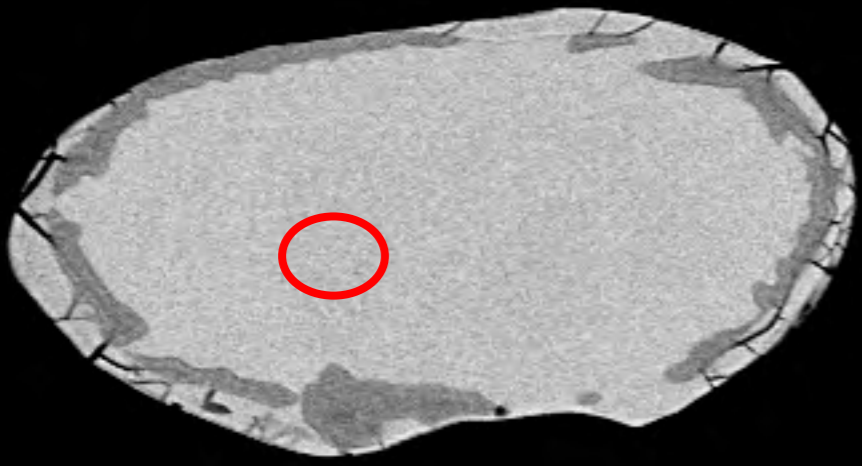
MIRA3 TESCAN

12414-cl-9

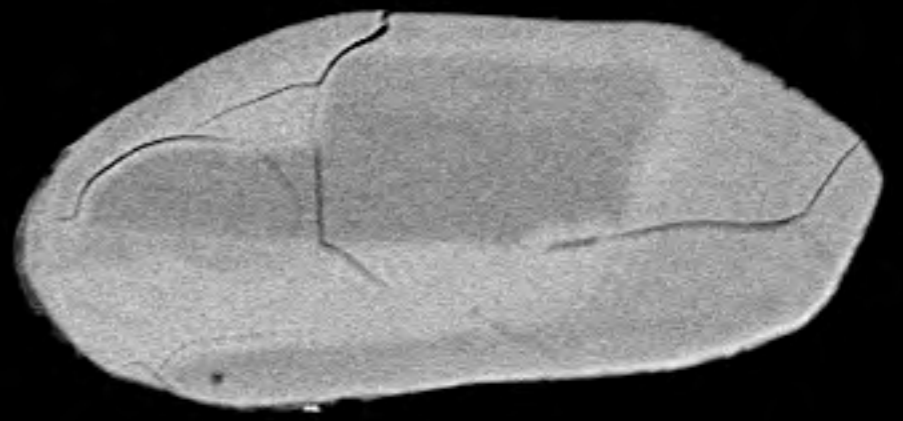
Date(m/d/y): 04/05/19

NRCan LMS GSC

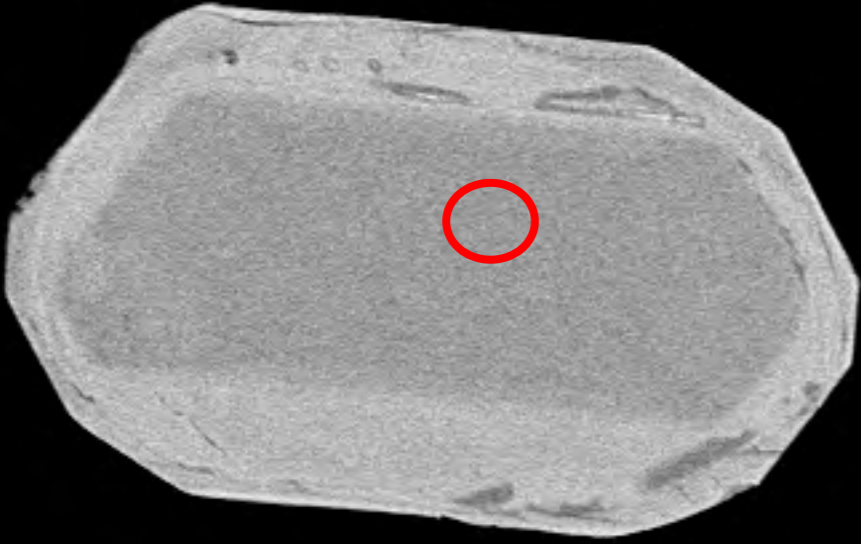




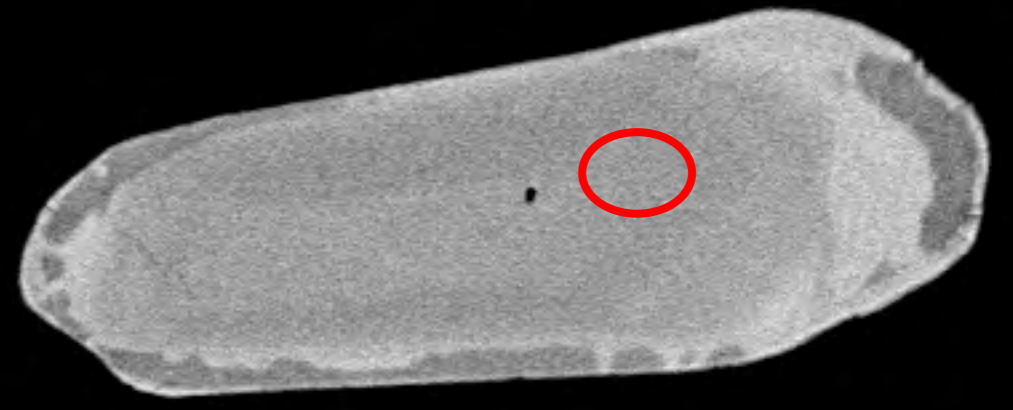
35



36



37

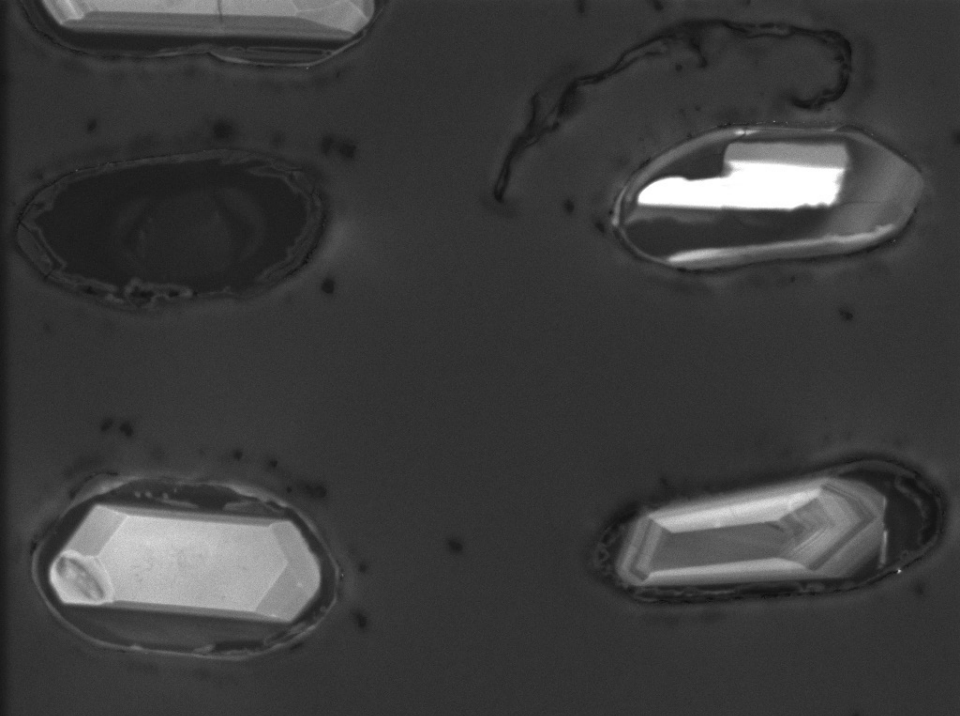


38

20  $\mu\text{m}^*$

File Name = 12414-10.tif





WD: 16.05 mm

View field: 513  $\mu\text{m}$

SEM MAG: 539 x

Det: CL



100  $\mu\text{m}$

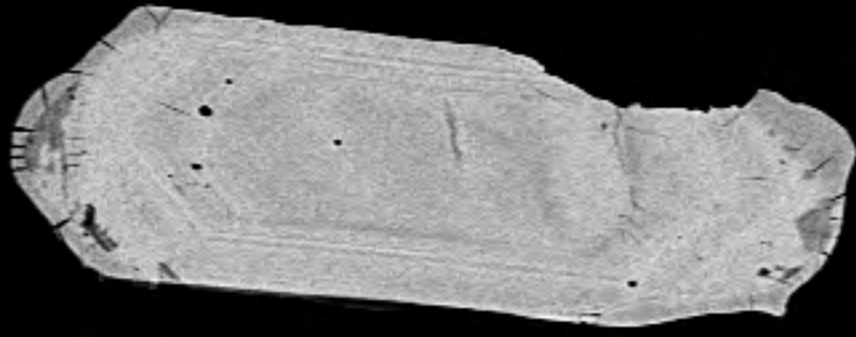
MIRA3 TESCAN

12414-cl-10

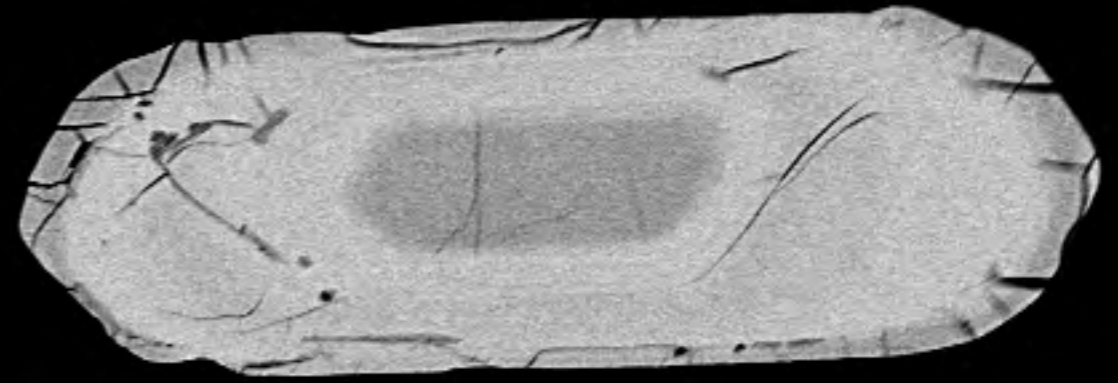
Date(m/d/y): 04/05/19

NRCan LMS GSC

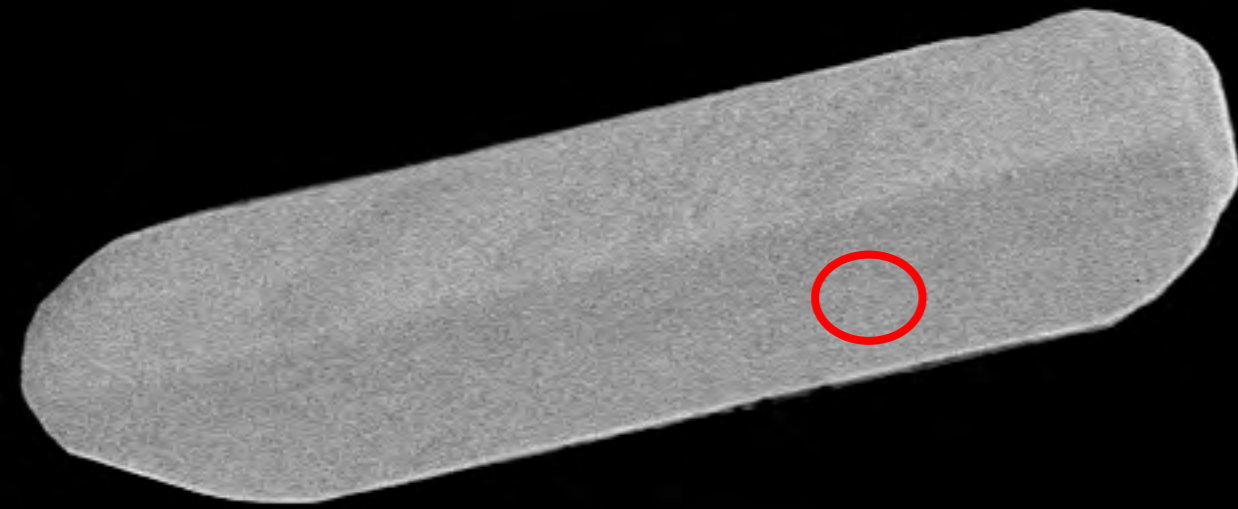




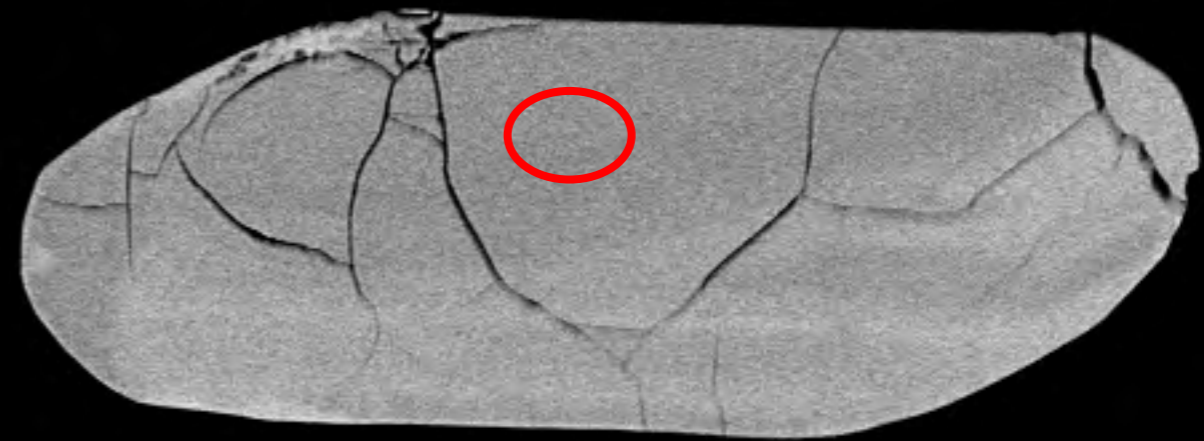
39



40



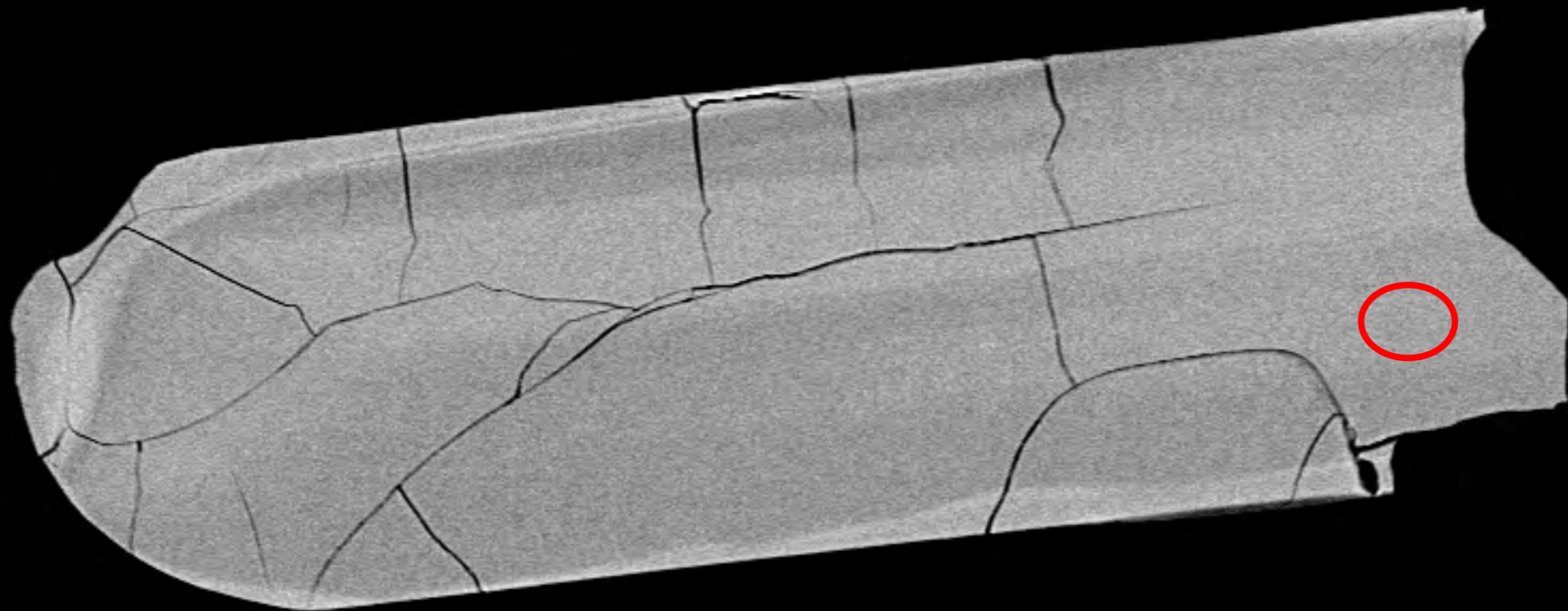
41



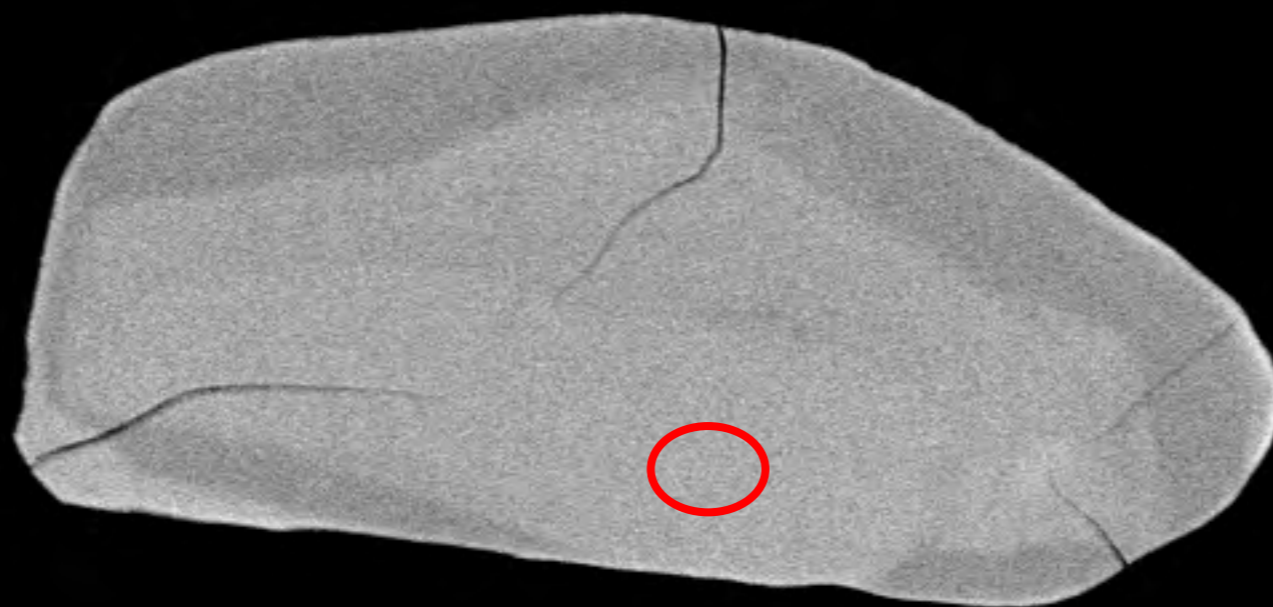
42

20  $\mu\text{m}^*$

File Name = 12414-11.tif



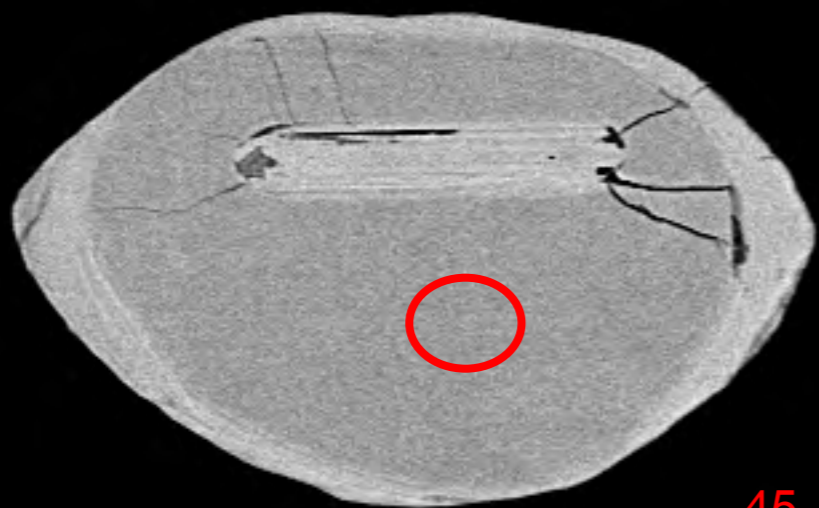
43



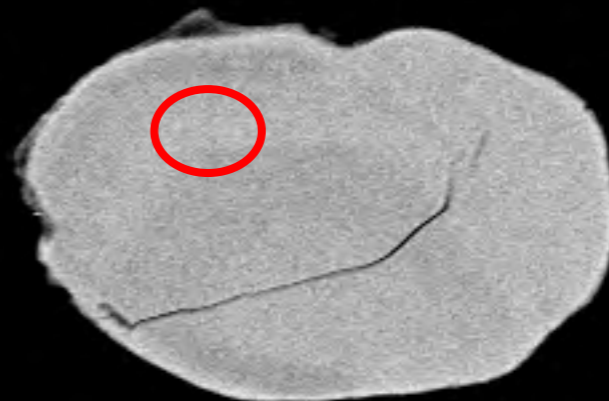
44

20  $\mu\text{m}^*$

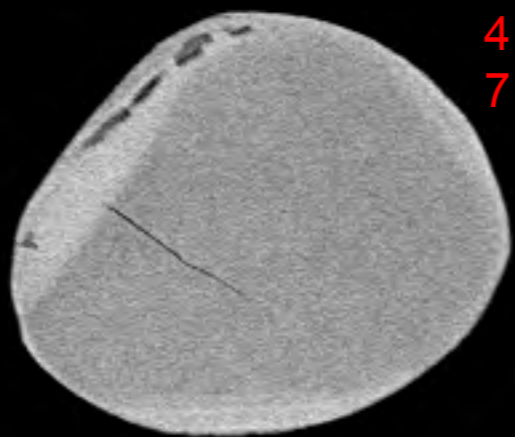
File Name = 12414-12.tif



45



46



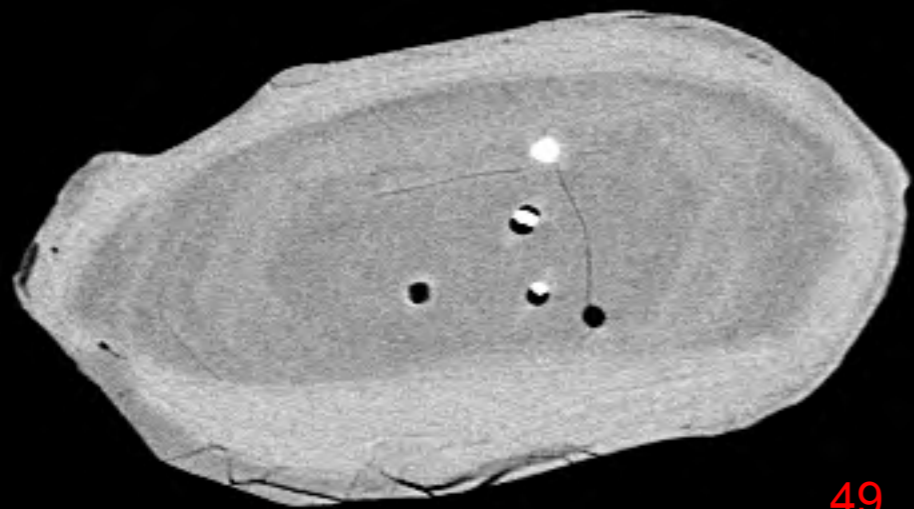
47



48

20  $\mu\text{m}^*$

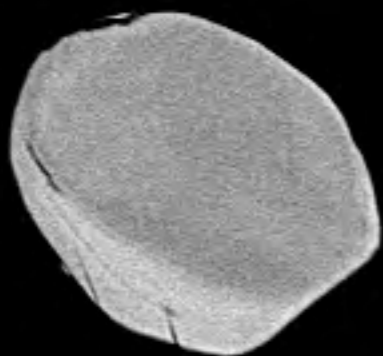
File Name = 12414-13.tif



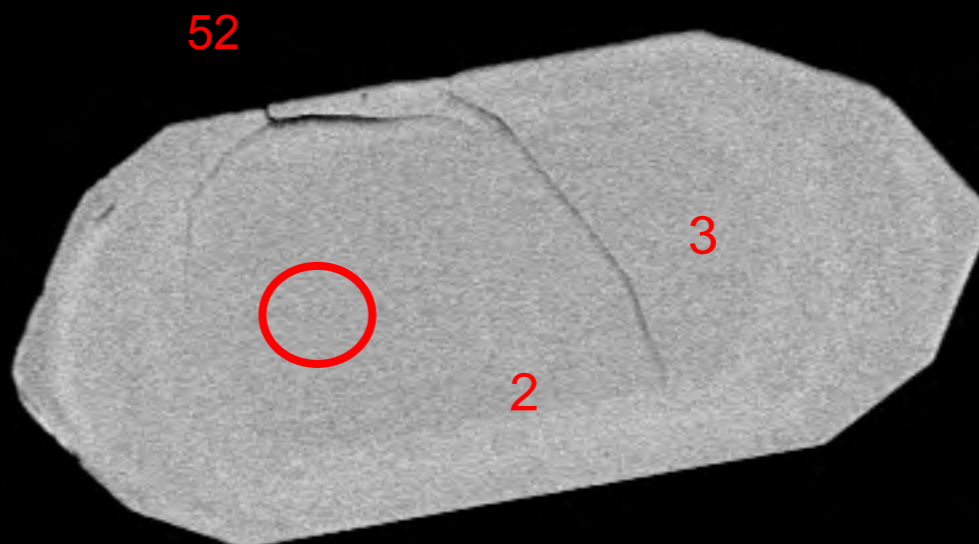
49



50



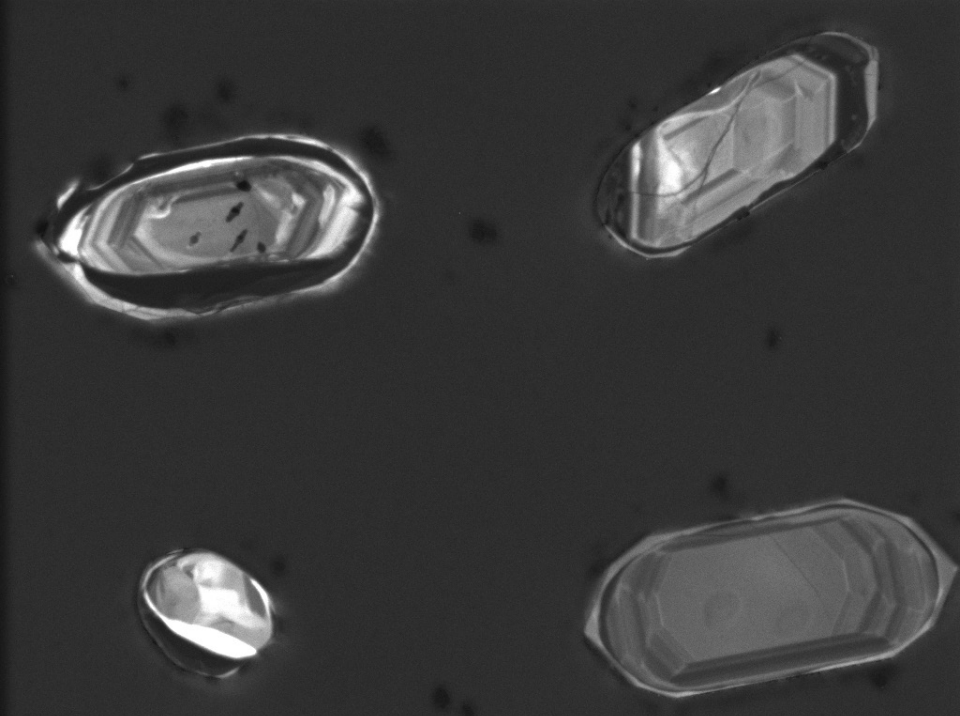
51



52

File Name = 12414-14.tif

20  $\mu\text{m}^*$



WD: 16.05 mm

View field: 464  $\mu\text{m}$

SEM MAG: 596 x

Det: CL



100  $\mu\text{m}$

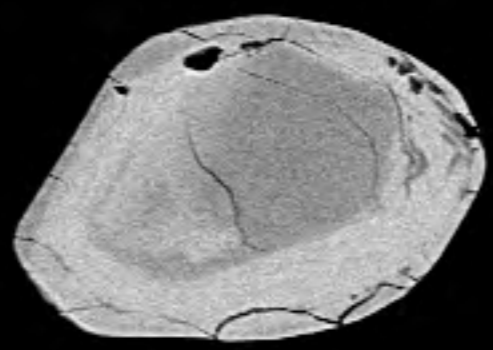
MIRA3 TESCAN

12414-cl-14

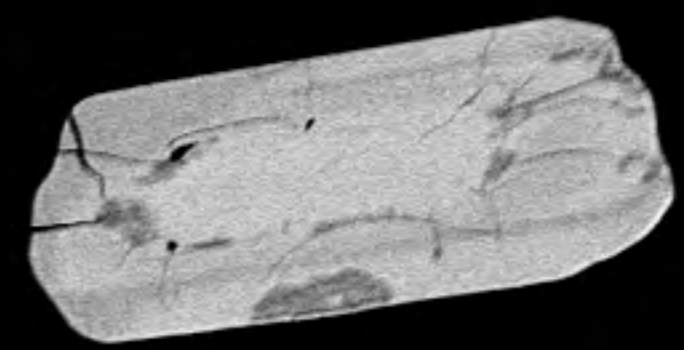
Date(m/d/y): 04/05/19

NRCan LMS GSC





53



54



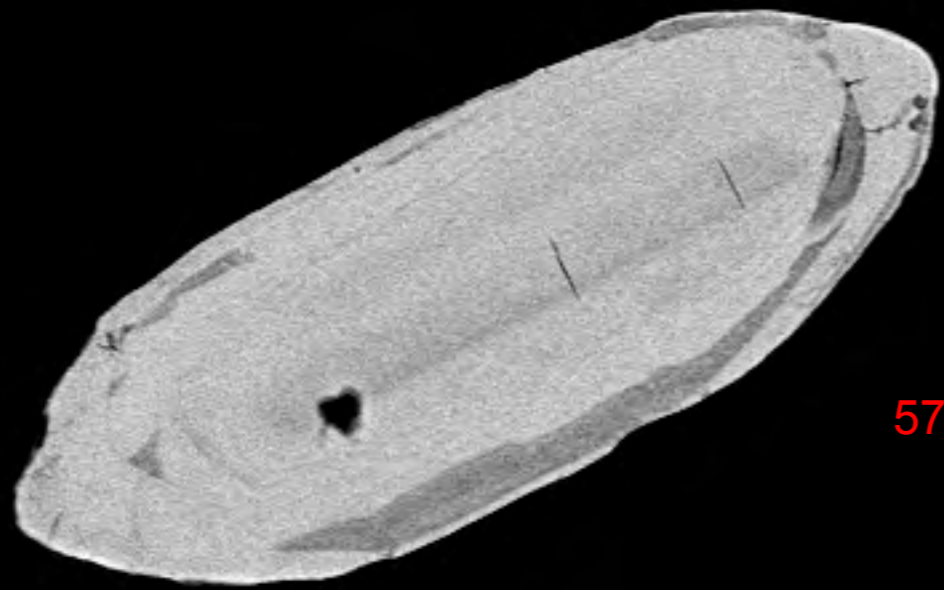
55



56

20  $\mu\text{m}^*$

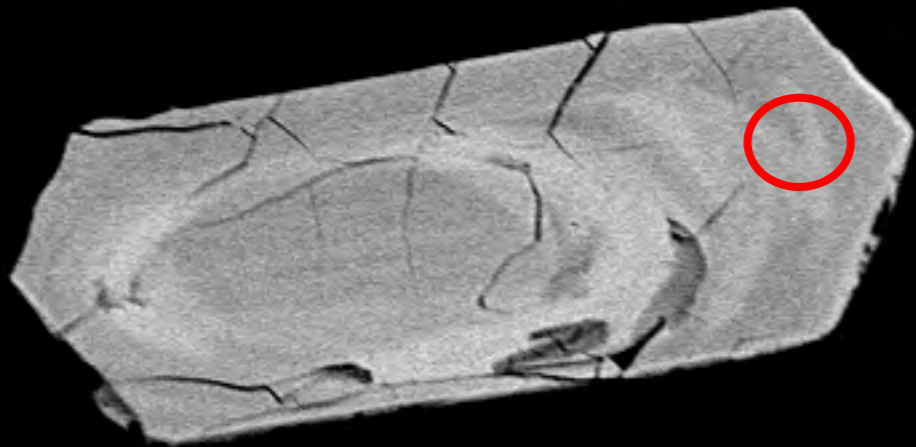
File Name = 12414-15.tif



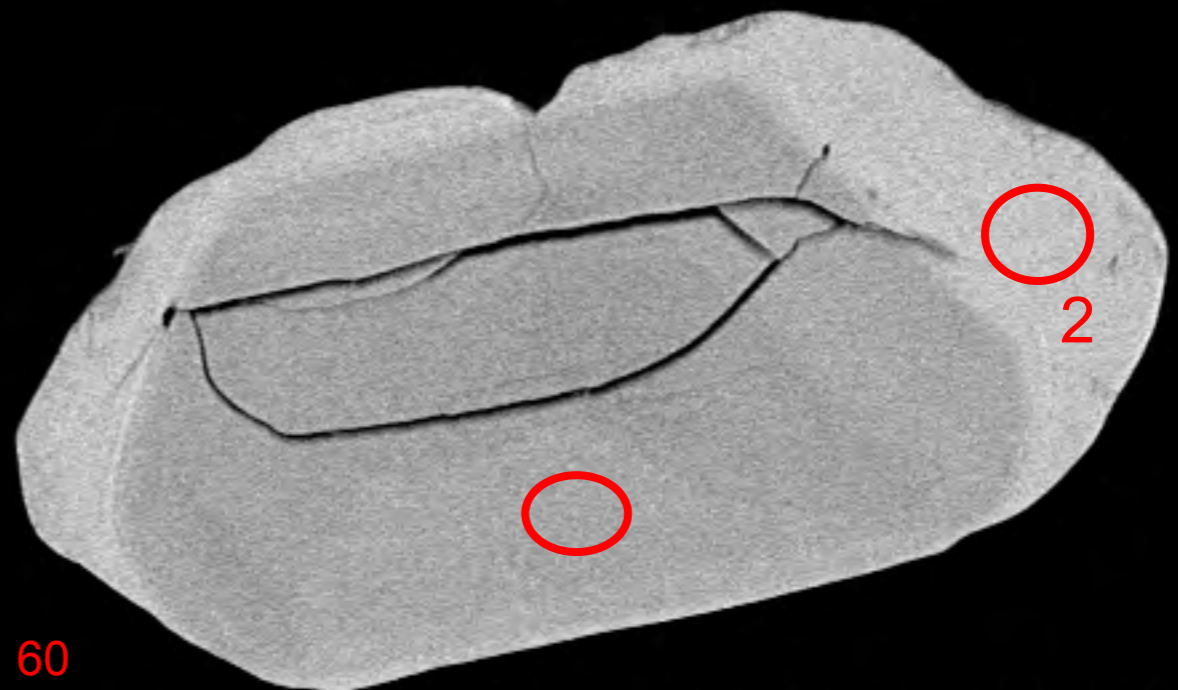
57



58



59



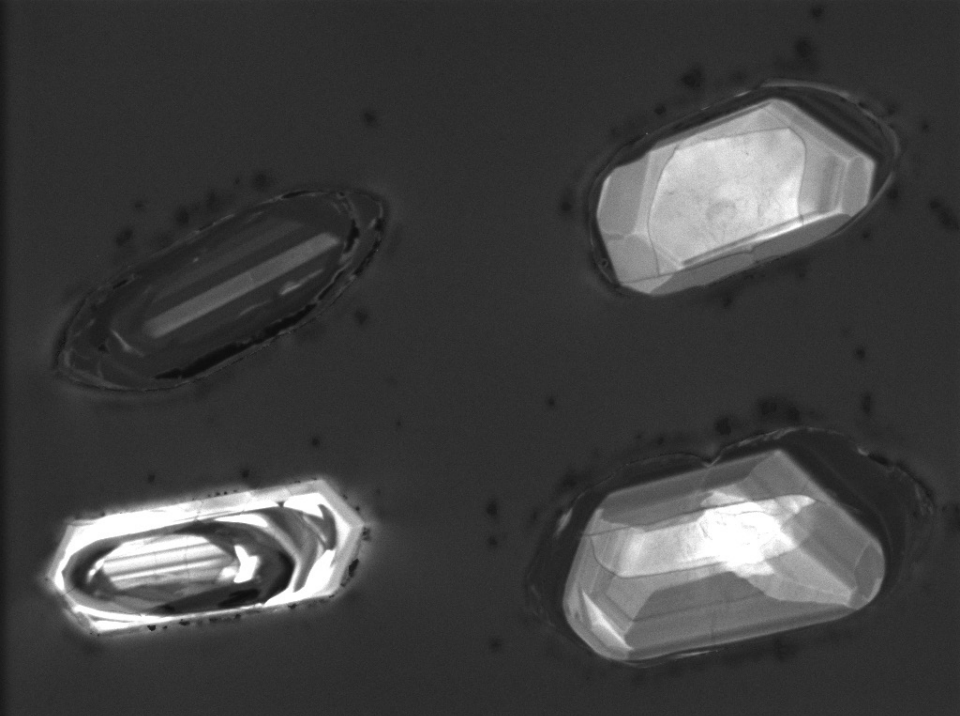
60

2

20  $\mu\text{m}^*$

File Name = 12414-16.tif





WD: 16.05 mm

View field: 570  $\mu\text{m}$



MIRA3 TESCAN

SEM MAG: 486 x

Det: CL

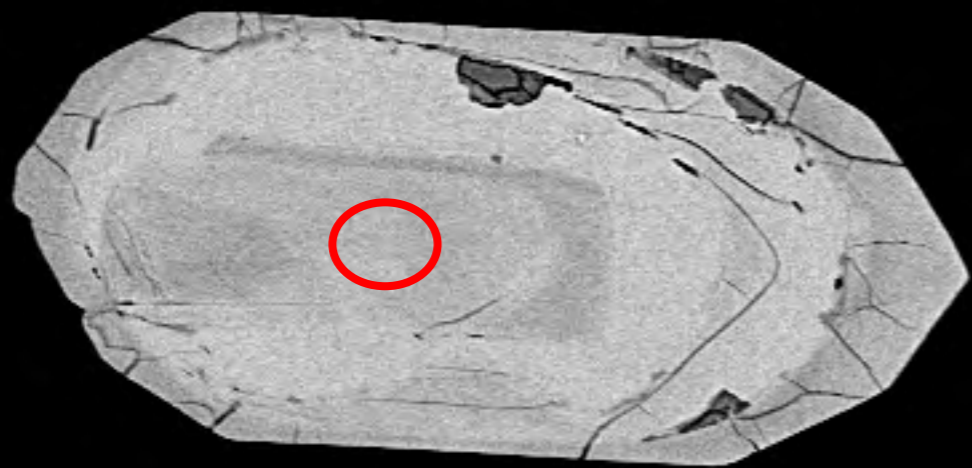
100  $\mu\text{m}$

12414-cl-16

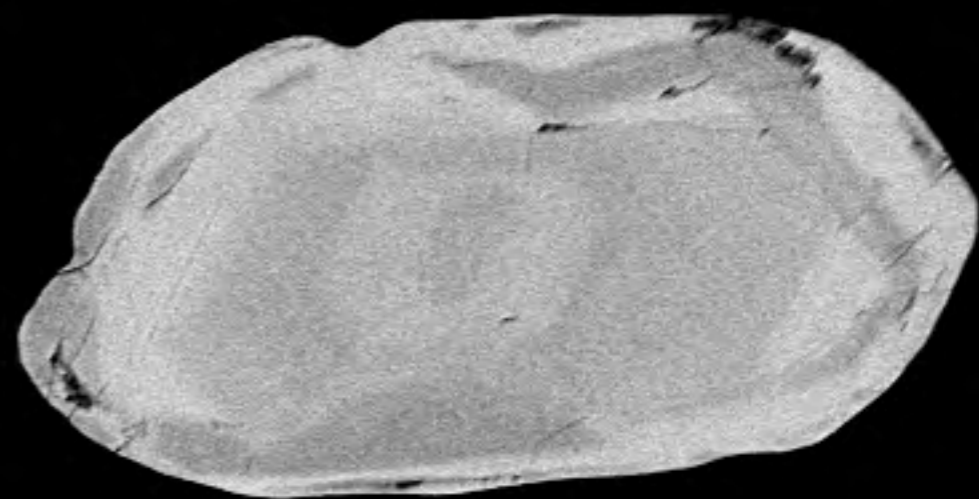
Date(m/d/y): 04/05/19

NRCan LMS GSC





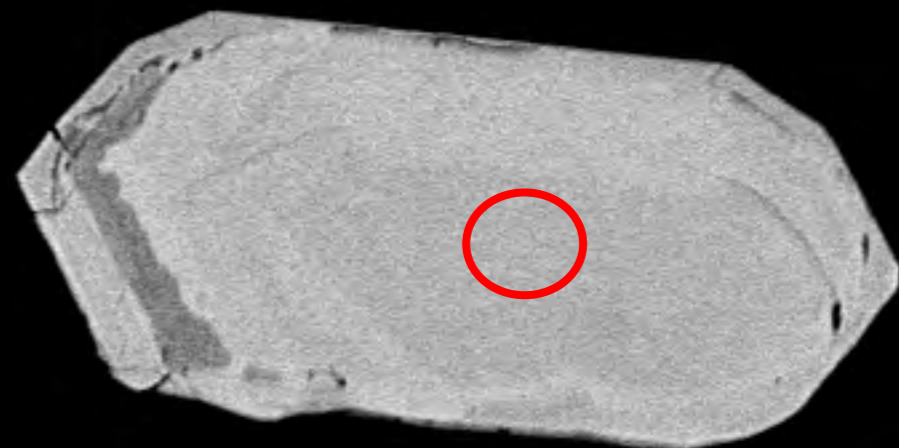
61



62



63



64

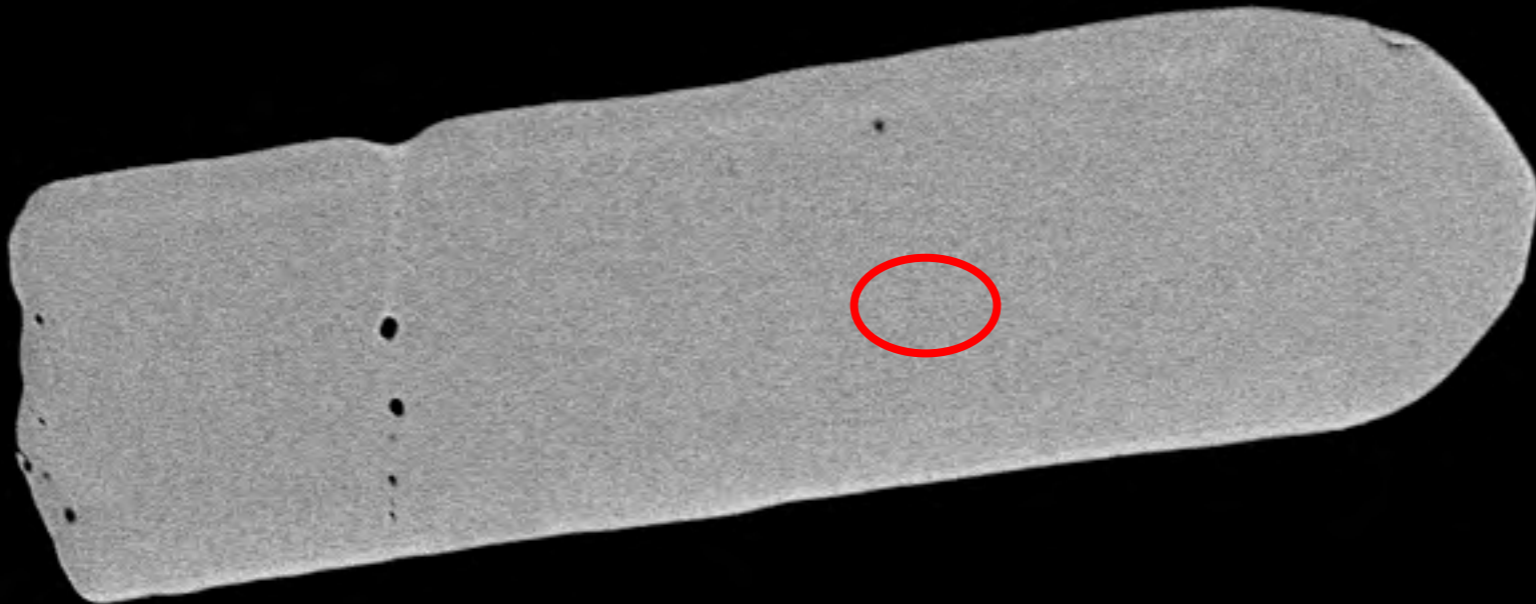
20  $\mu\text{m}^*$

File Name = 12414-17.tif



65

66



20  $\mu\text{m}^*$

File Name = 12414-18.tif



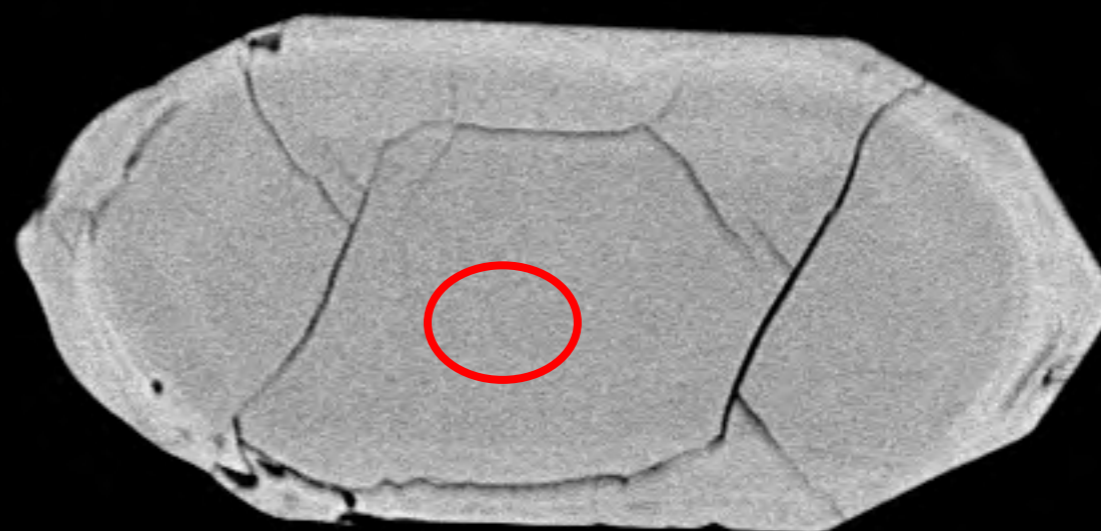
67



68



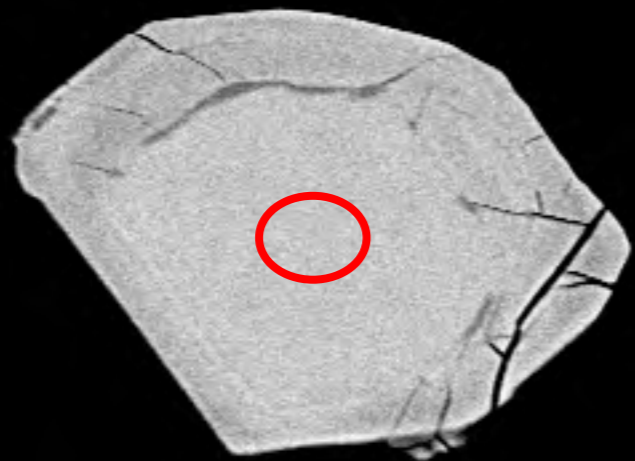
69



70

20  $\mu\text{m}^*$

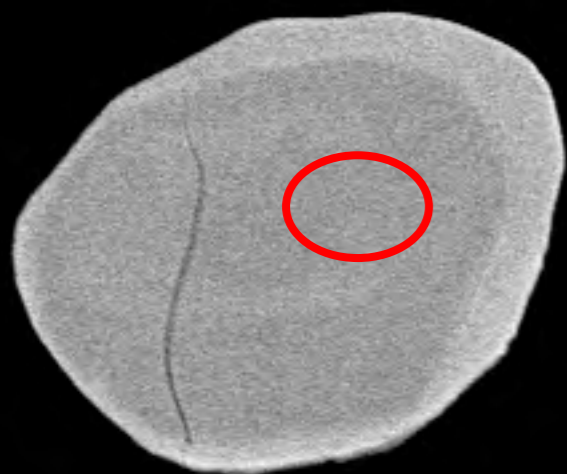
File Name = 12414-19.tif



71



72



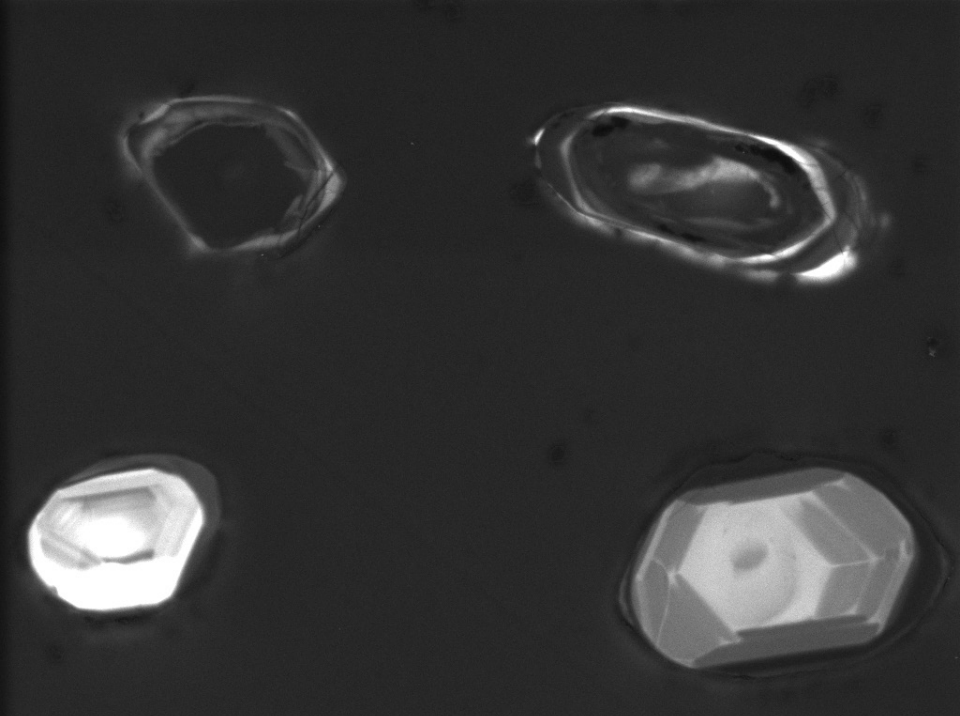
73



74

20  $\mu\text{m}^*$

File Name = 12414-20.tif



WD: 16.05 mm

View field: 430  $\mu\text{m}$

SEM MAG: 644 x

Det: CL



100  $\mu\text{m}$

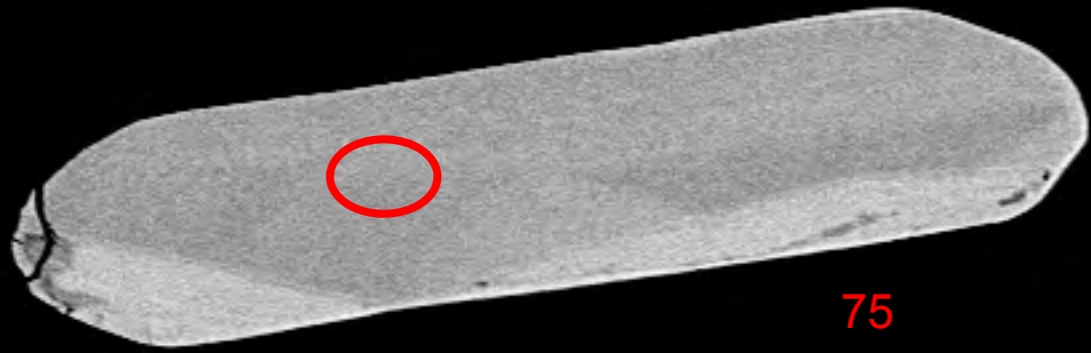
MIRA3 TESCAN

12414-cl-20

Date(m/d/y): 04/05/19

NRCan LMS GSC

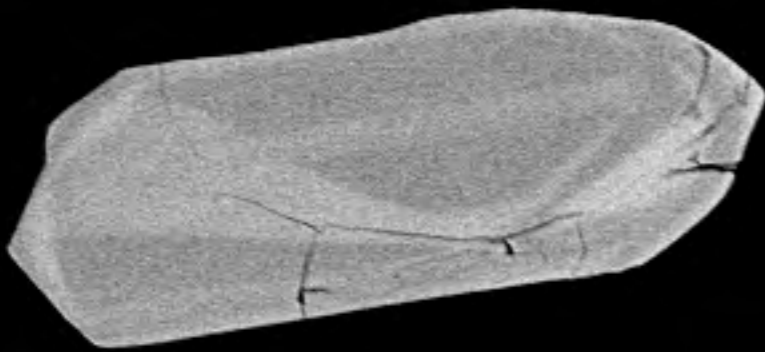




75

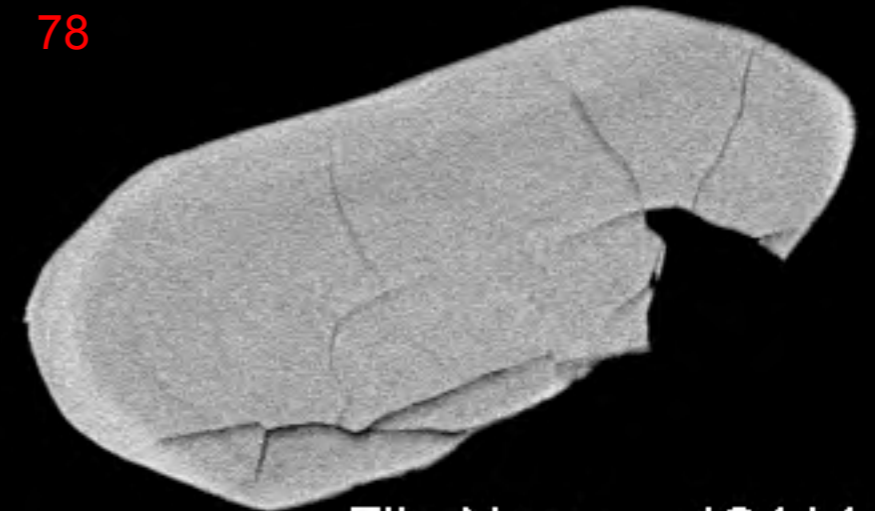


76



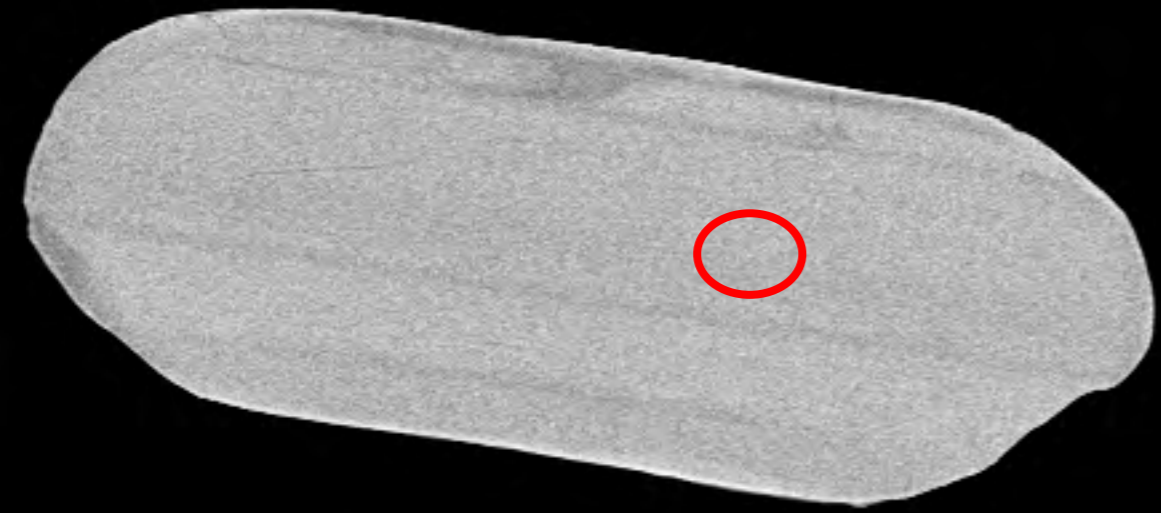
77

78

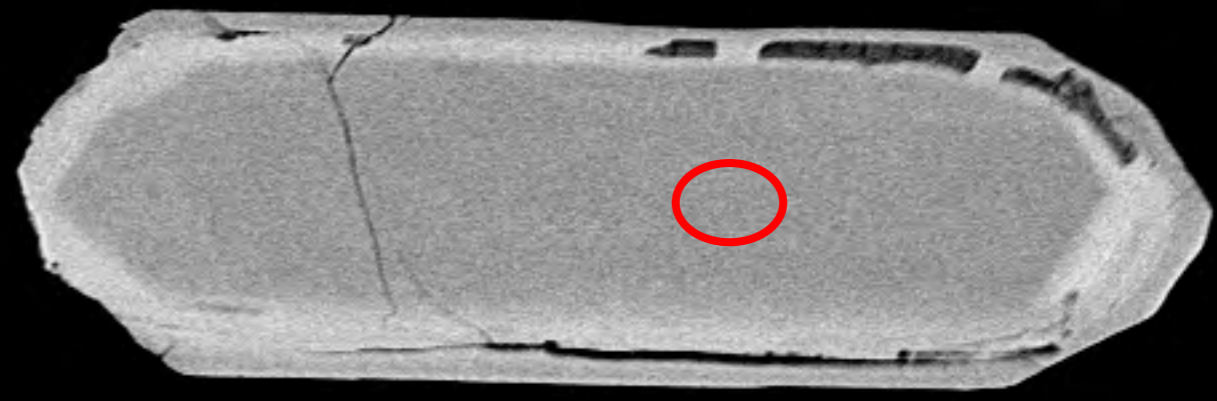


20  $\mu\text{m}^*$

File Name = 12414-21.tif



79



80



81

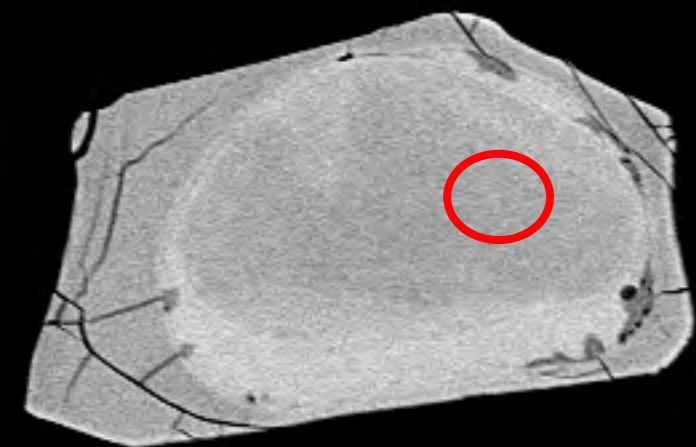


82

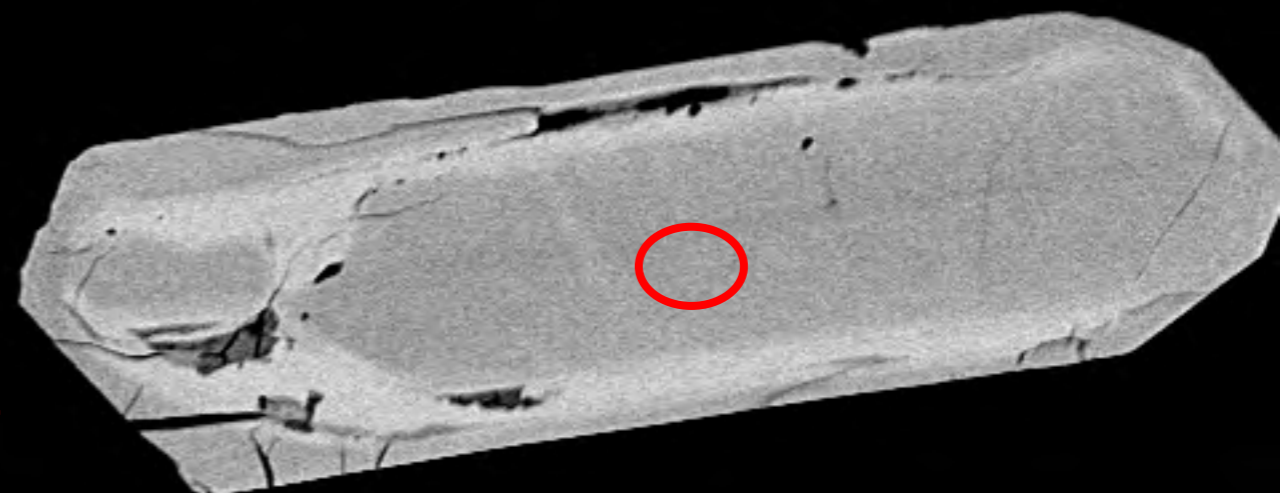
20  $\mu\text{m}^*$

File Name = 12414-22.tif

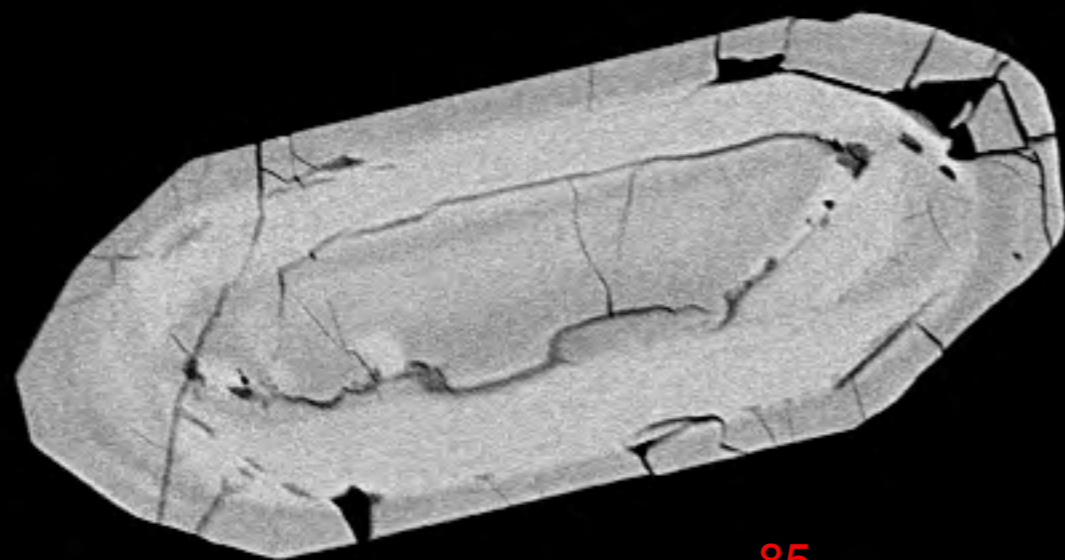




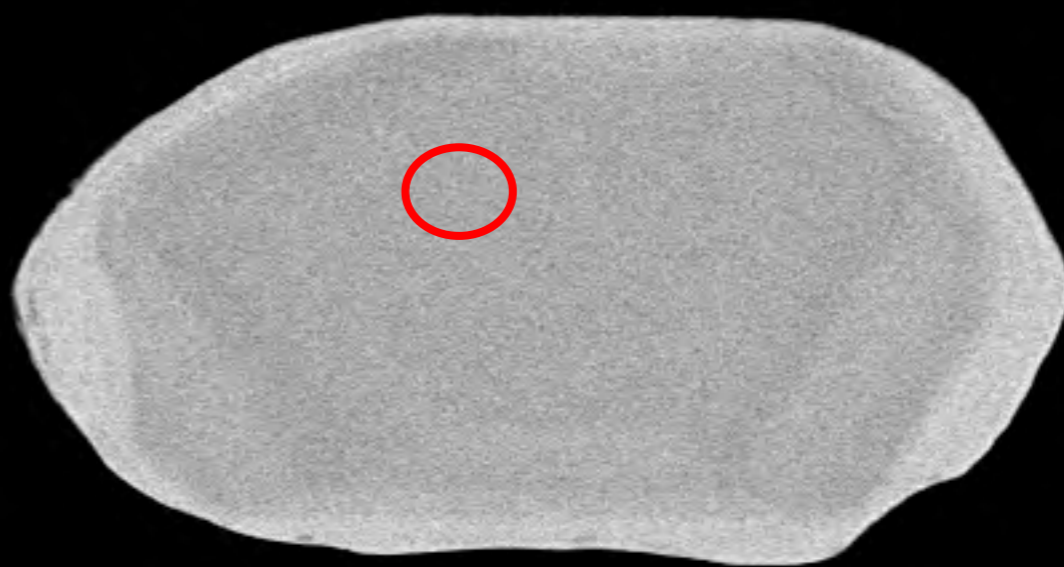
83



84



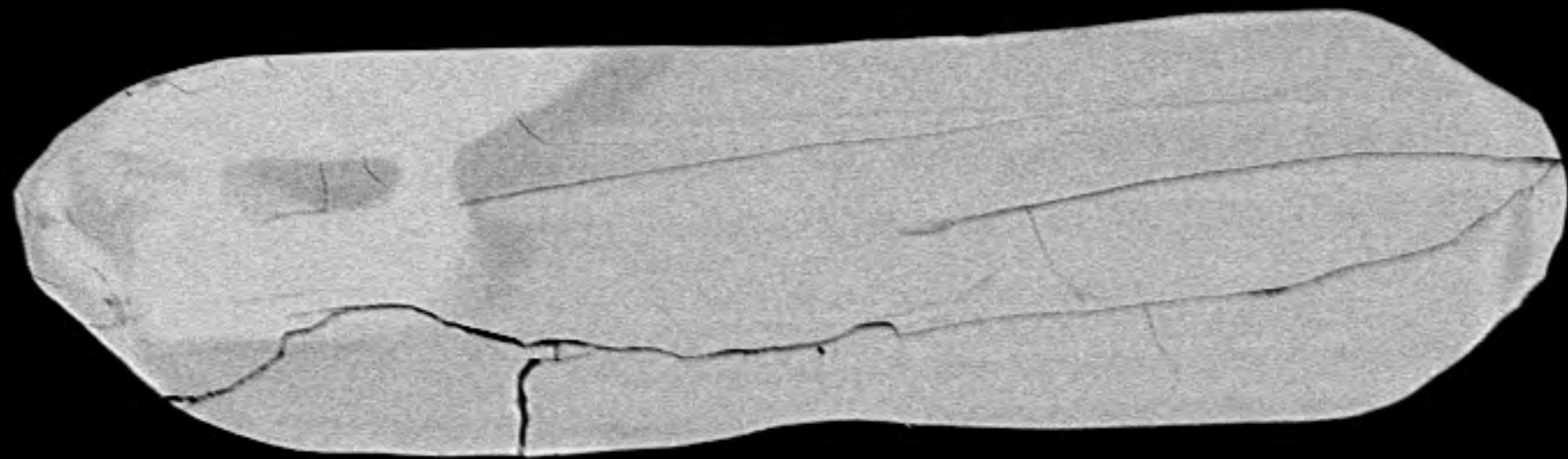
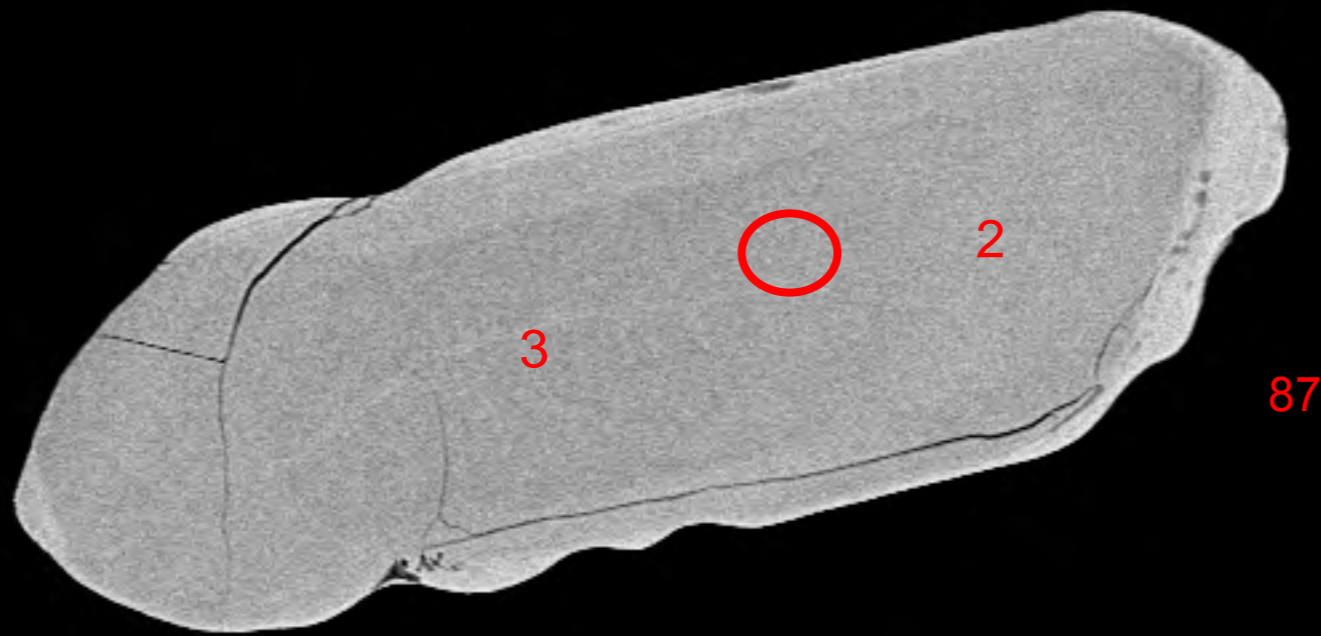
85



86

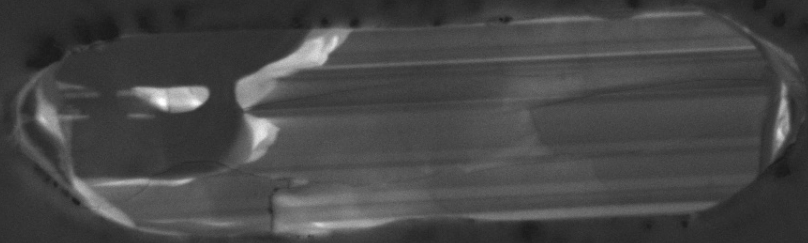
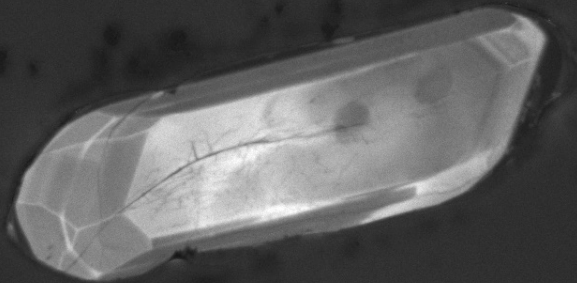
20  $\mu\text{m}^*$

File Name = 12414-23.tif



20  $\mu\text{m}^*$

File Name = 12414-24.tif



WD: 16.05 mm

View field: 453  $\mu\text{m}$

SEM MAG: 611 x

Det: CL



100  $\mu\text{m}$

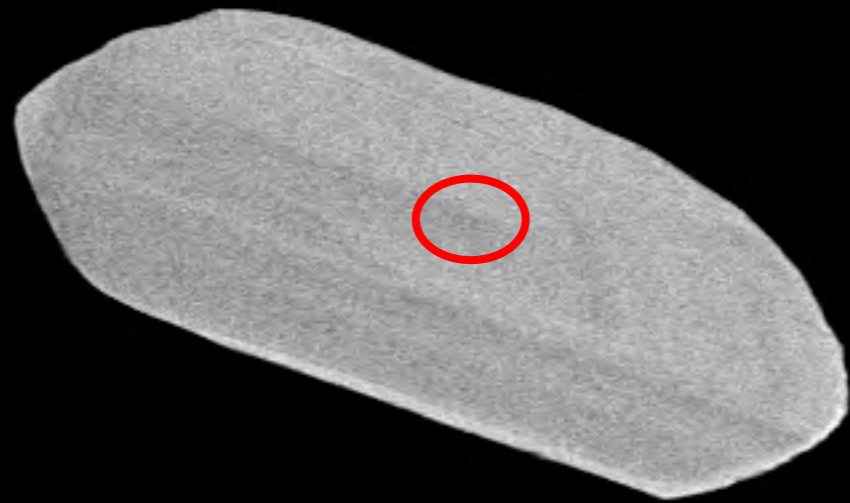
12414-cl-24

Date(m/d/y): 04/05/19

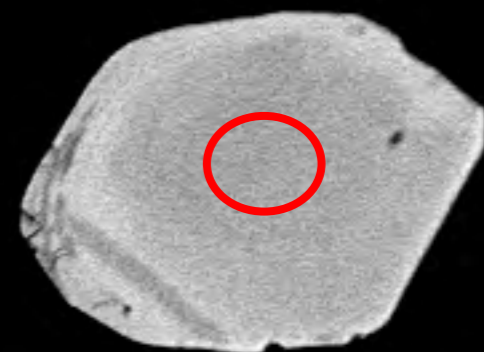
MIRA3 TESCAN

NRCan LMS GSC

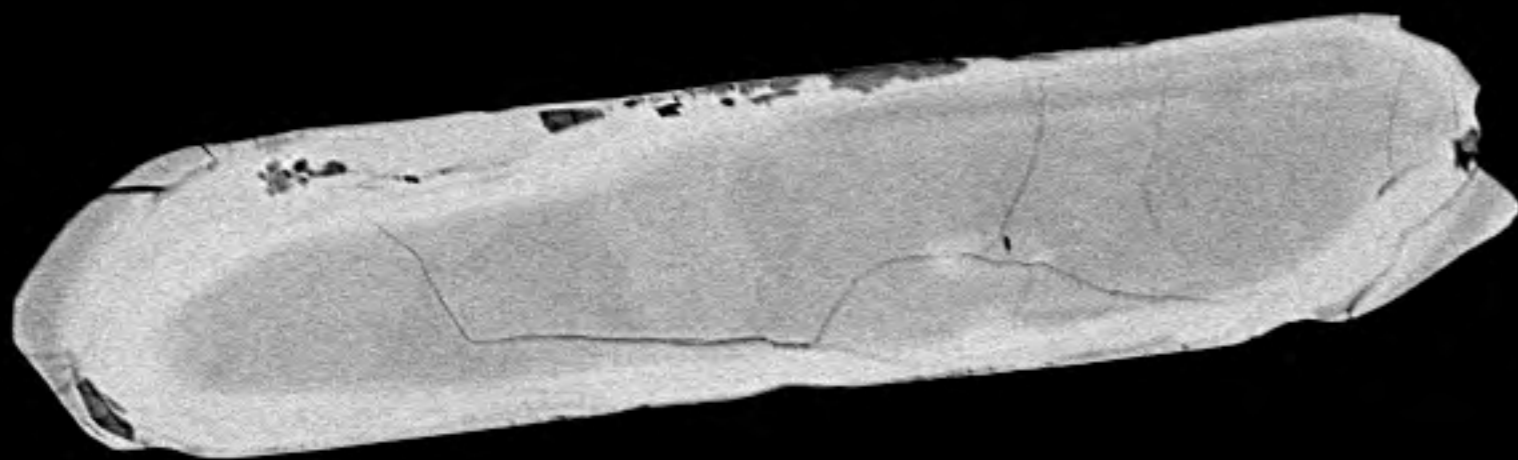




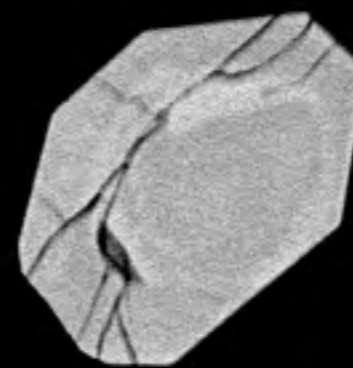
89



90



91



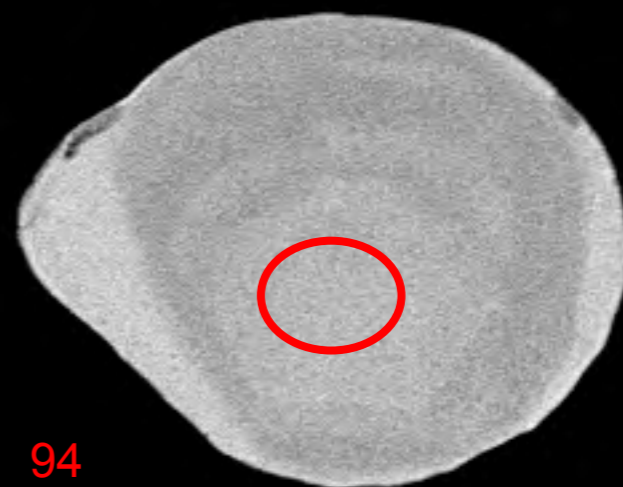
92

20  $\mu\text{m}^*$

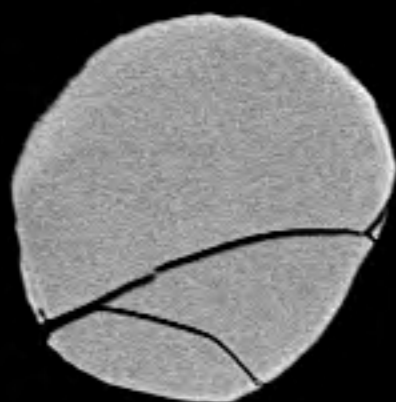
File Name = 12414-25.tif



93



94



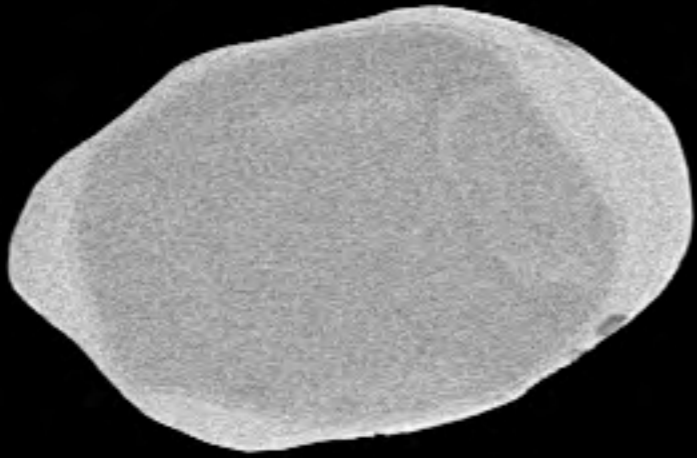
95



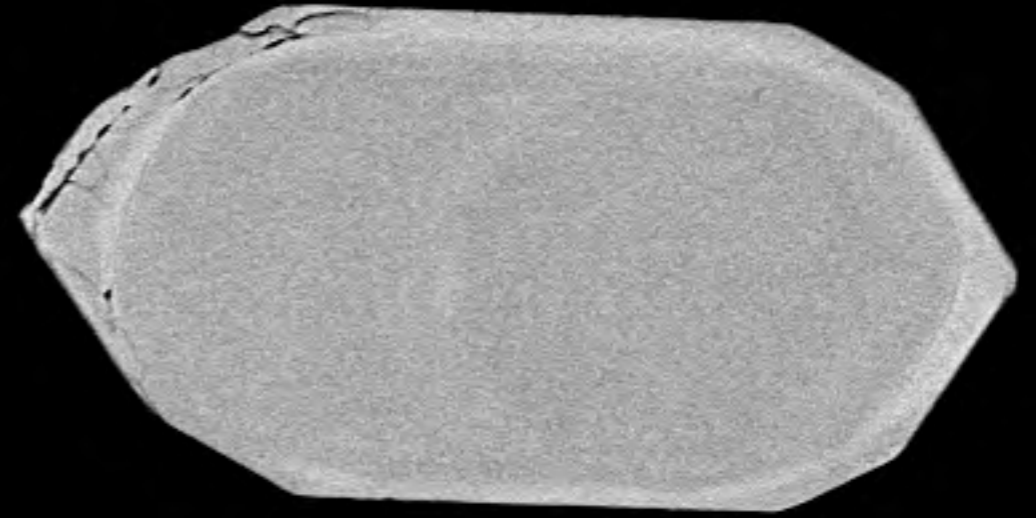
96

20  $\mu\text{m}^*$

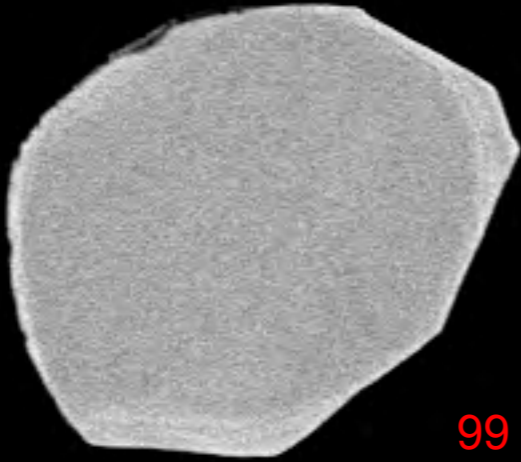
File Name = 12414-26.tif



97

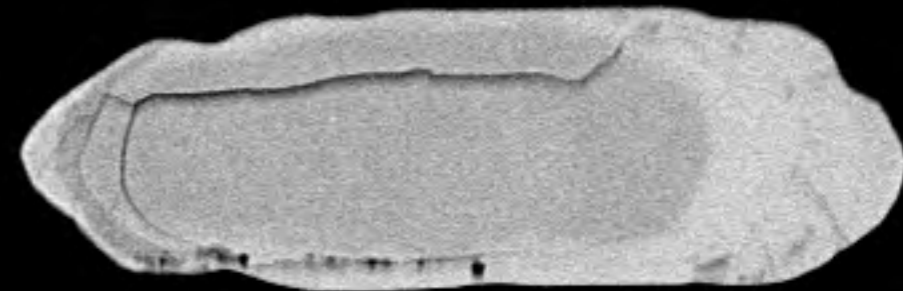


98



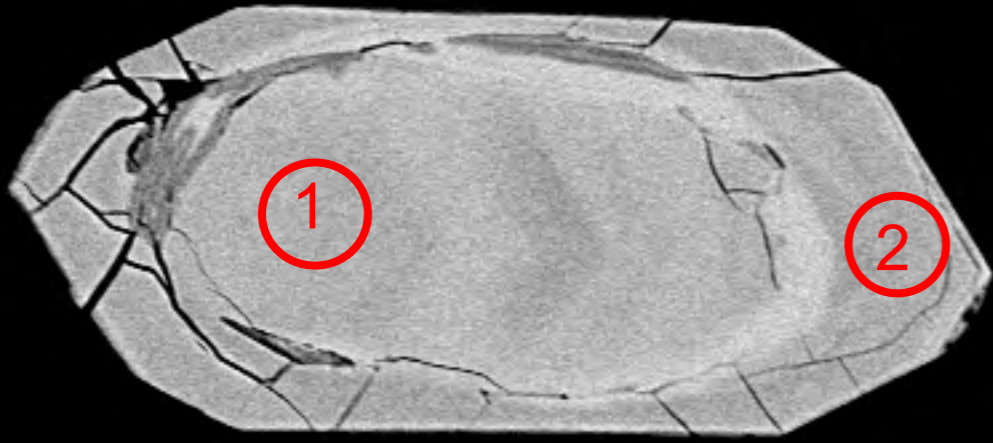
99

100



20  $\mu\text{m}^*$

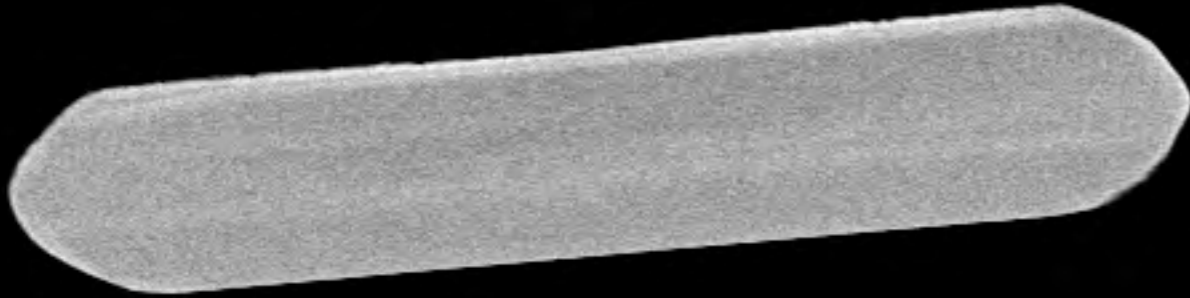
File Name = 12414-27.tif



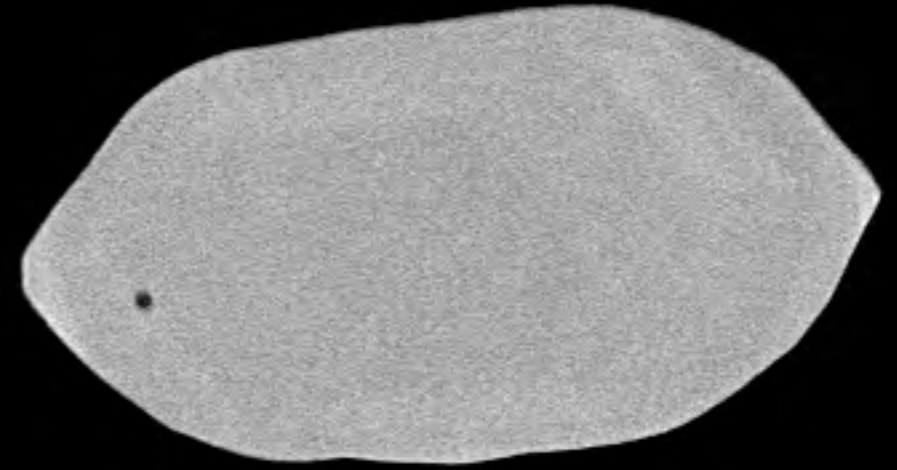
101



102



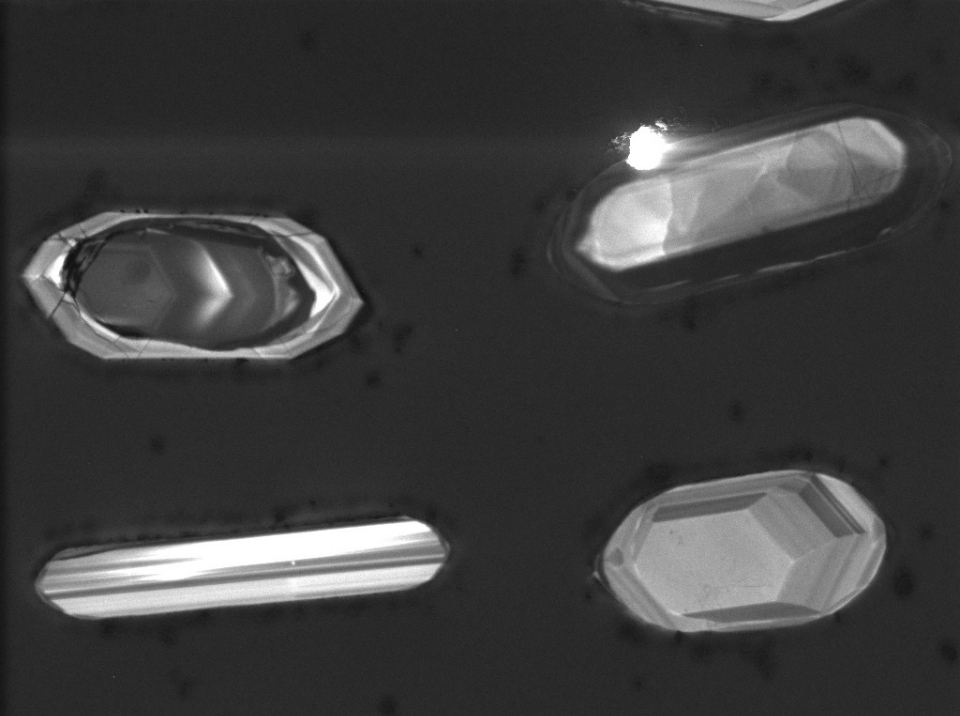
103



104

20  $\mu\text{m}^*$

File Name = 12414-28.tif



WD: 16.05 mm

View field: 548  $\mu\text{m}$



MIRA3 TESCAN

SEM MAG: 505 x

Det: CL

100  $\mu\text{m}$

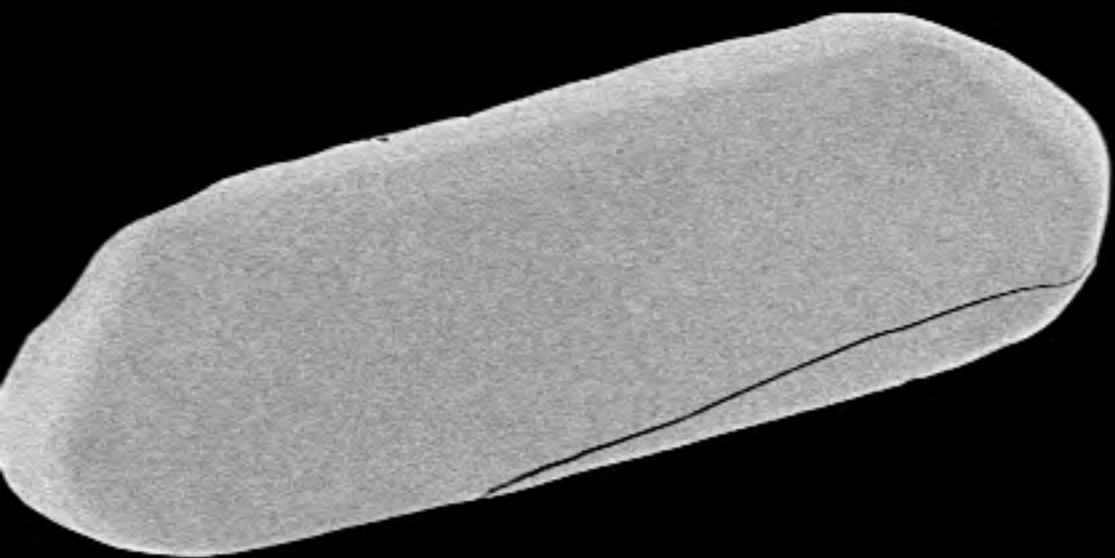
12414-cl-28

Date(m/d/y): 04/05/19

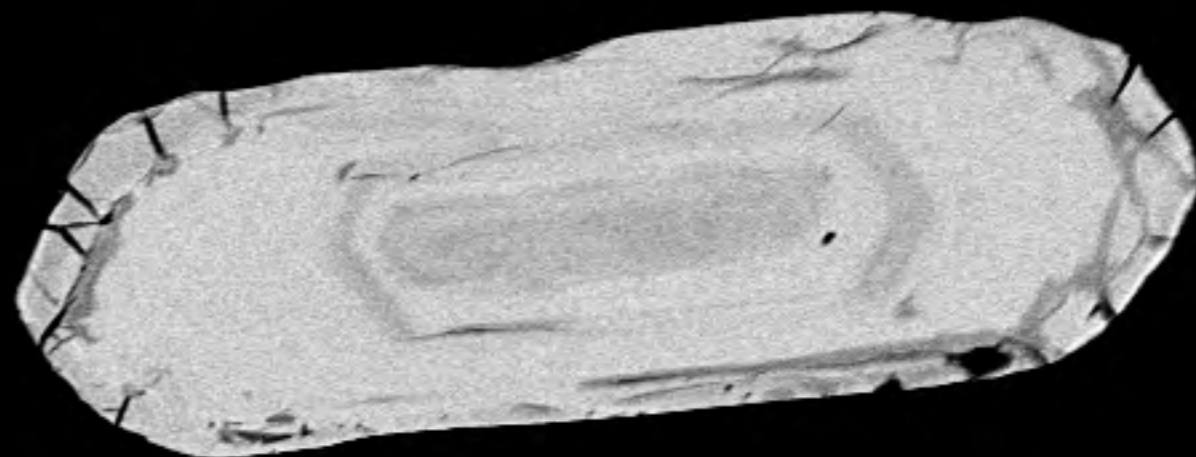
NRCan LMS GSC



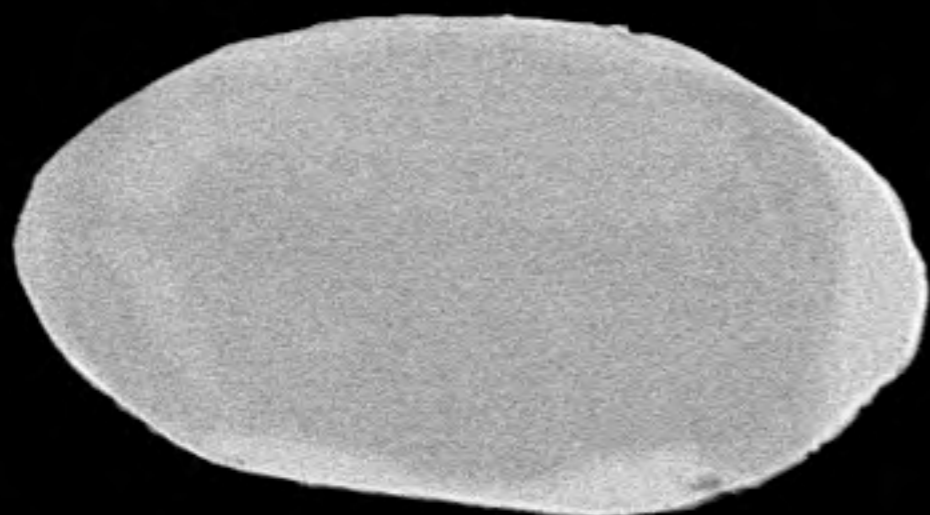




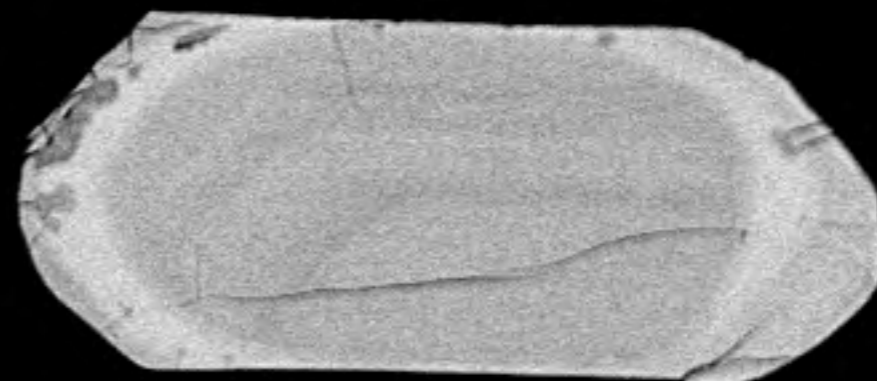
105



106



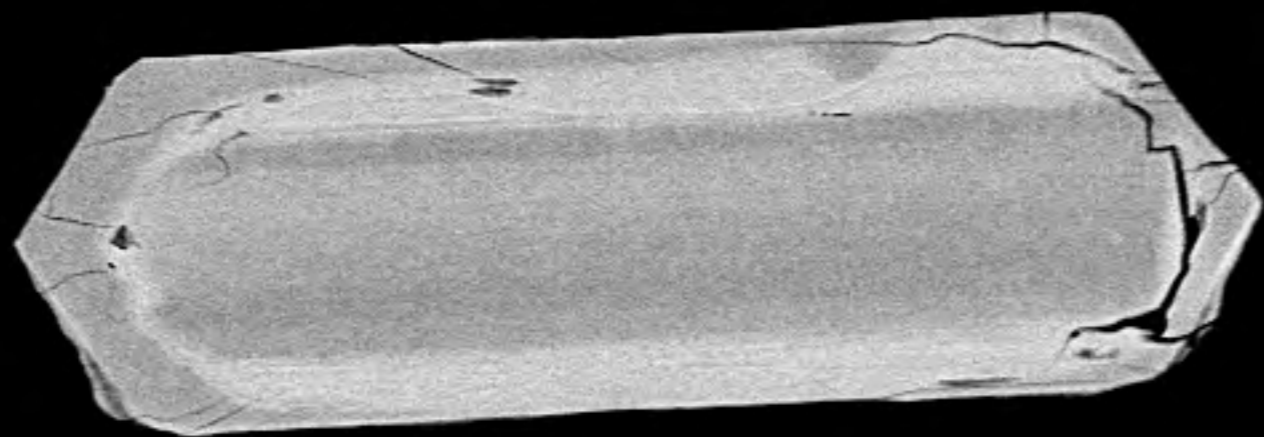
107



108

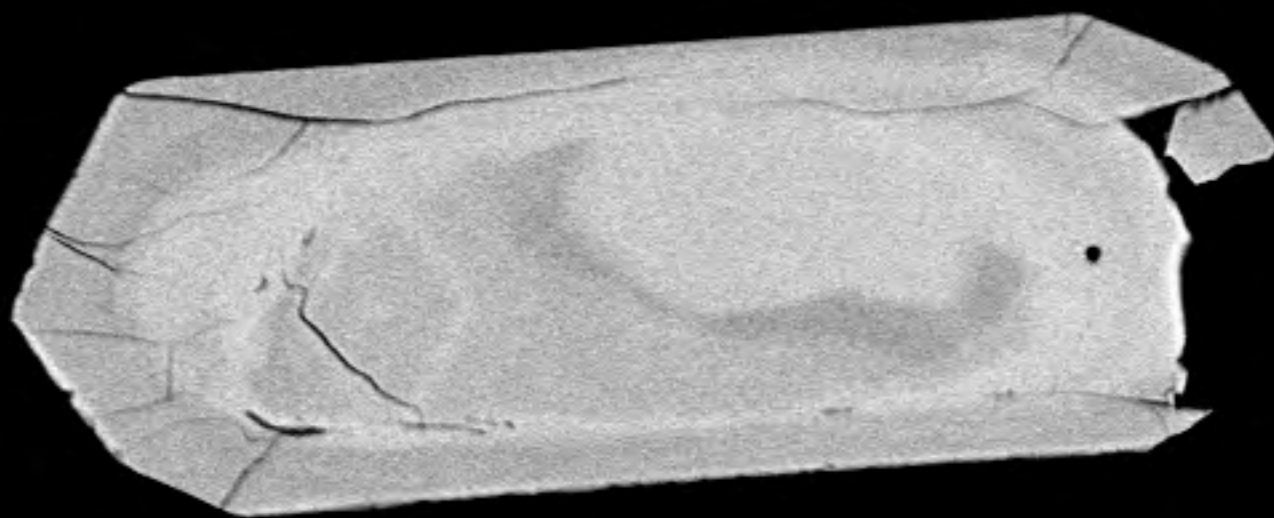
20  $\mu\text{m}^*$

File Name = 12414-29.tif



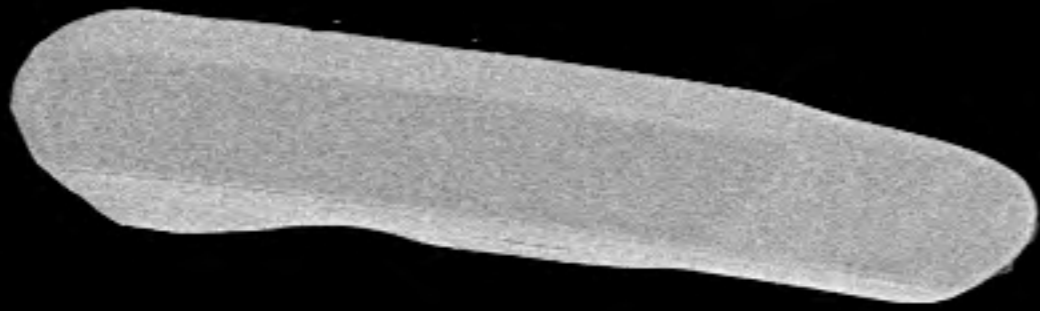
109

110

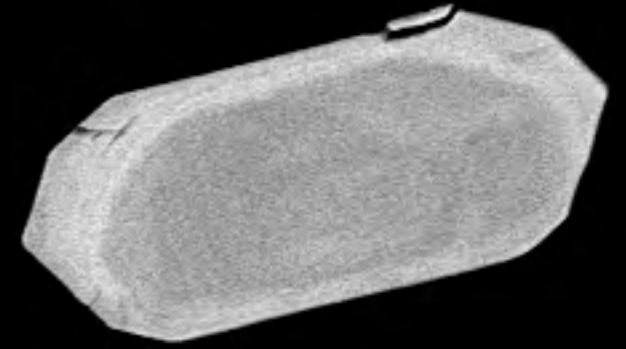


20  $\mu\text{m}^*$

File Name = 12414-30.tif

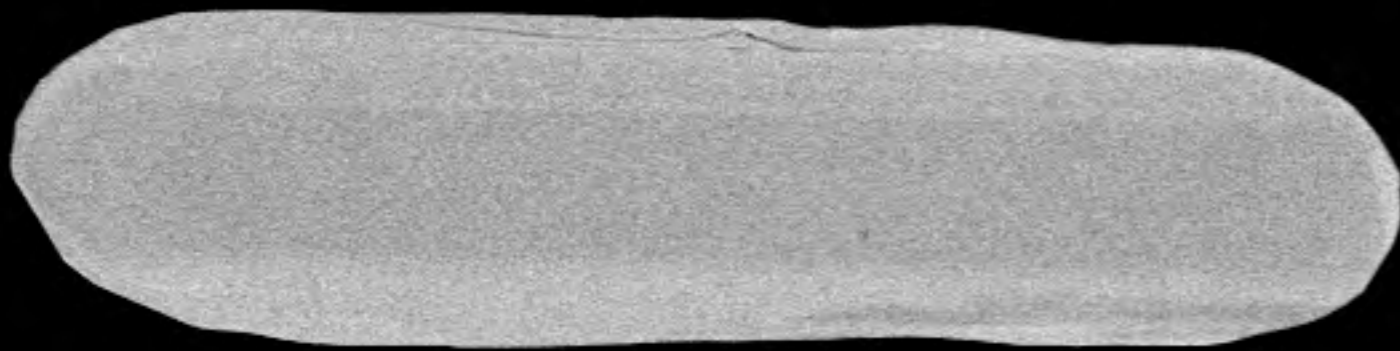


111

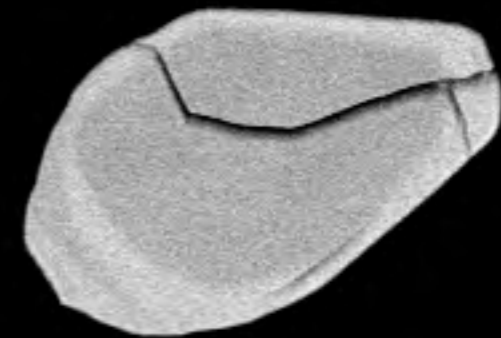


112

113

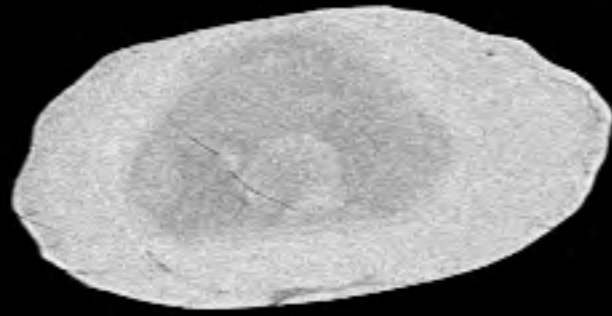


114

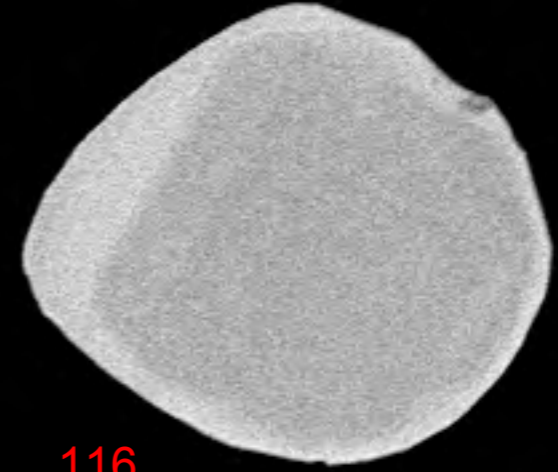


20  $\mu\text{m}^*$

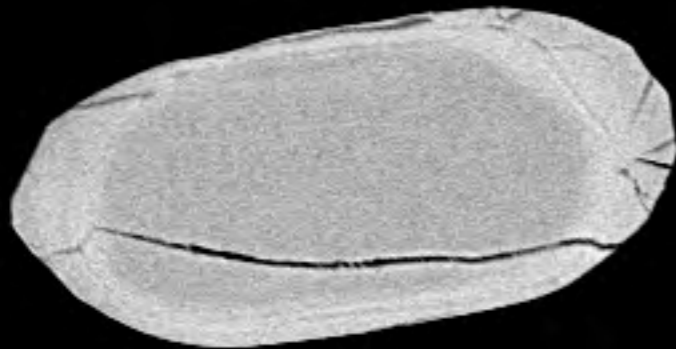
File Name = 12414-31.tif



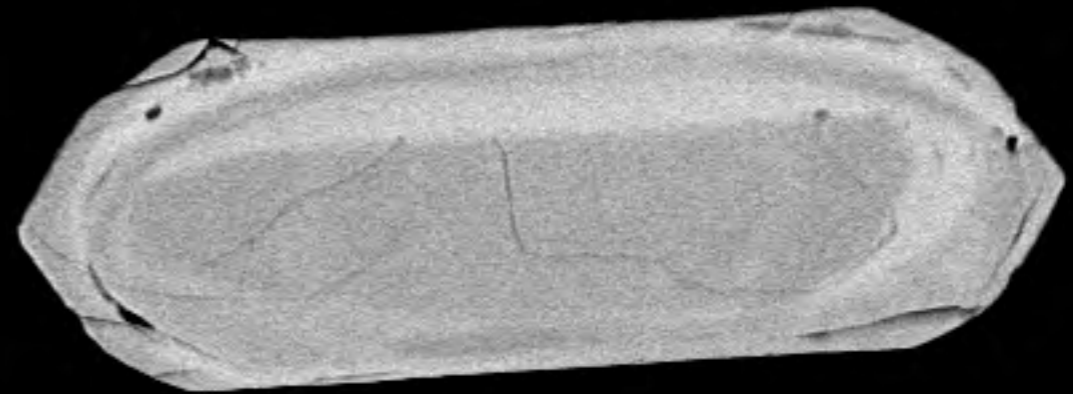
115



116



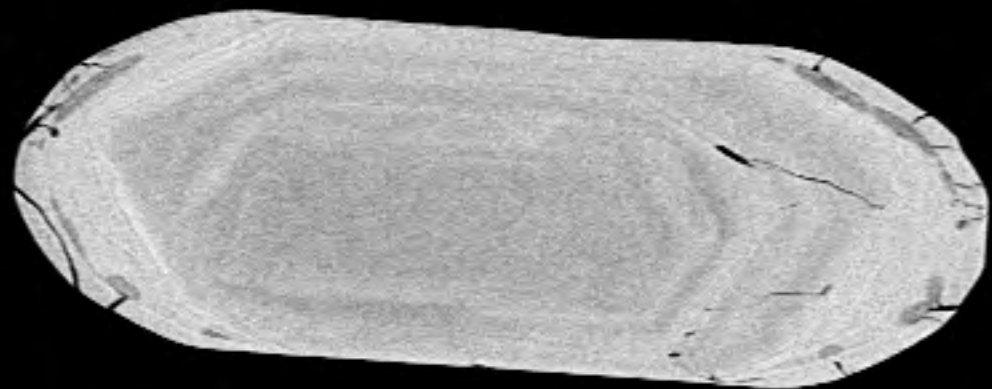
117



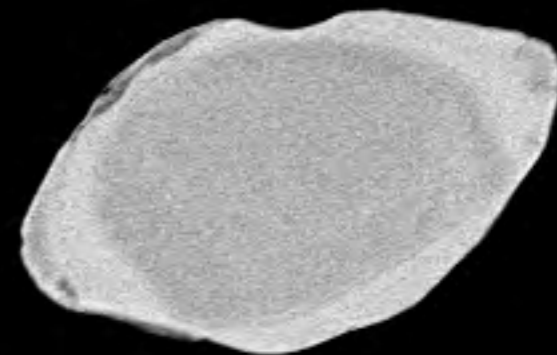
118

20  $\mu\text{m}^*$

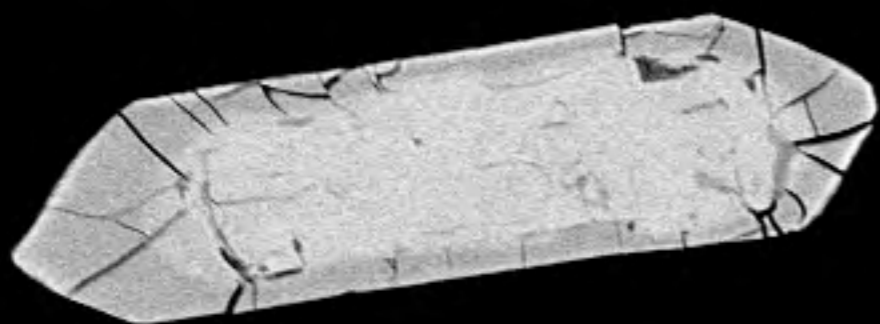
File Name = 12414-32.tif



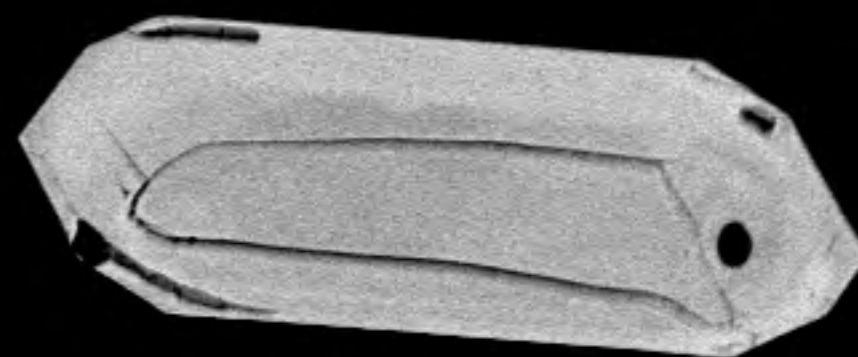
119



120



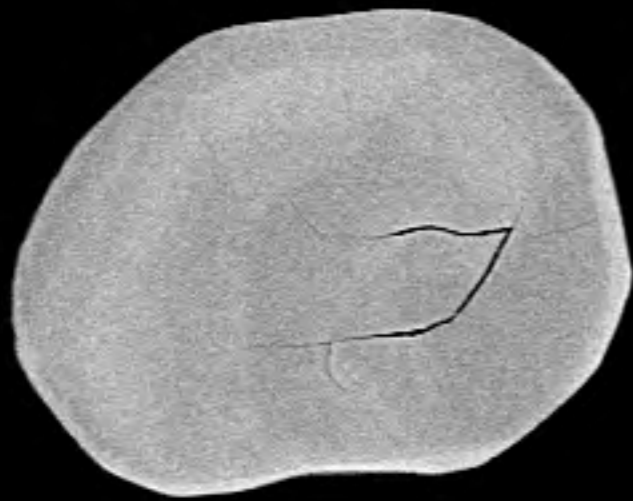
121



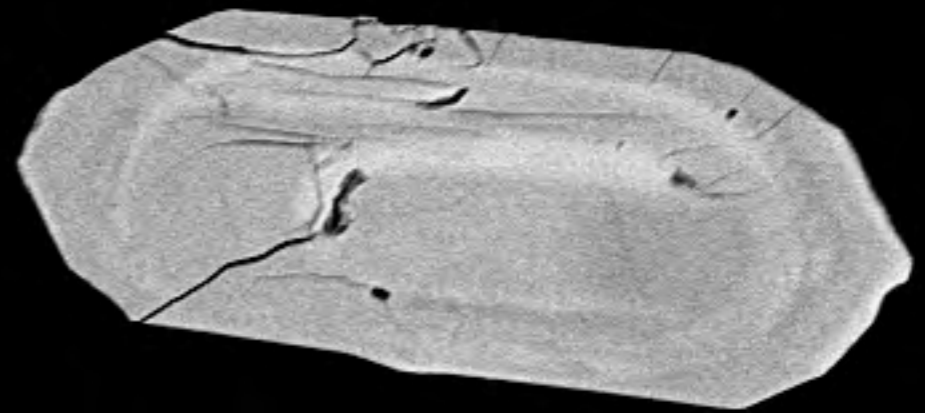
122

20  $\mu\text{m}^*$

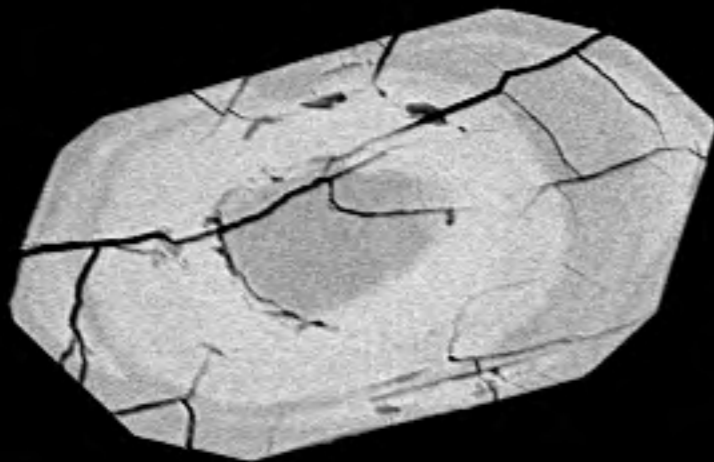
File Name = 12414-33.tif



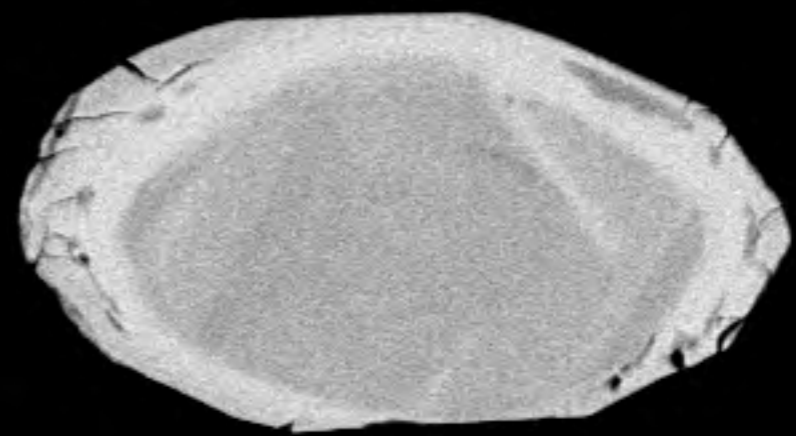
123



124



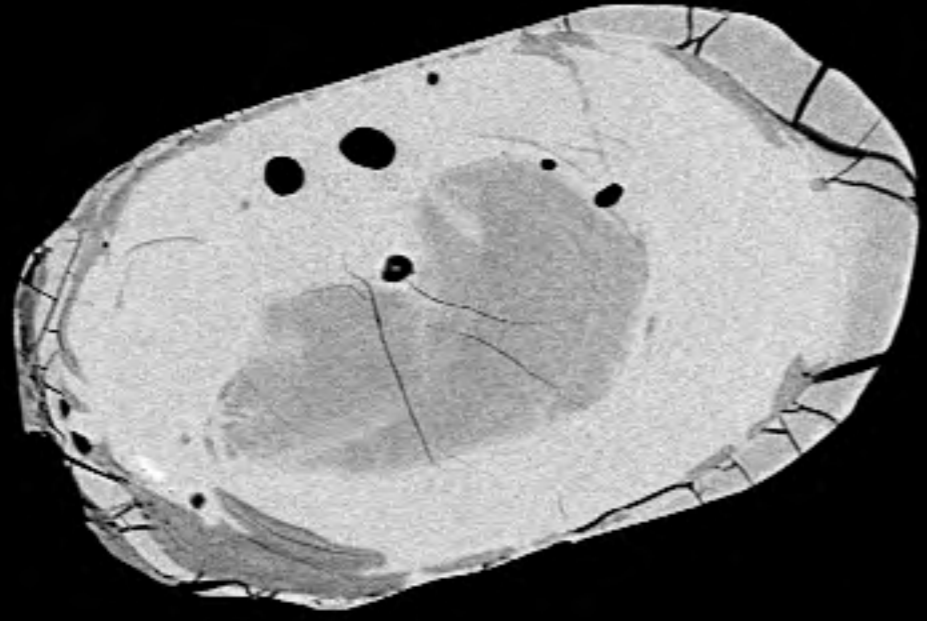
125



126

20  $\mu\text{m}^*$

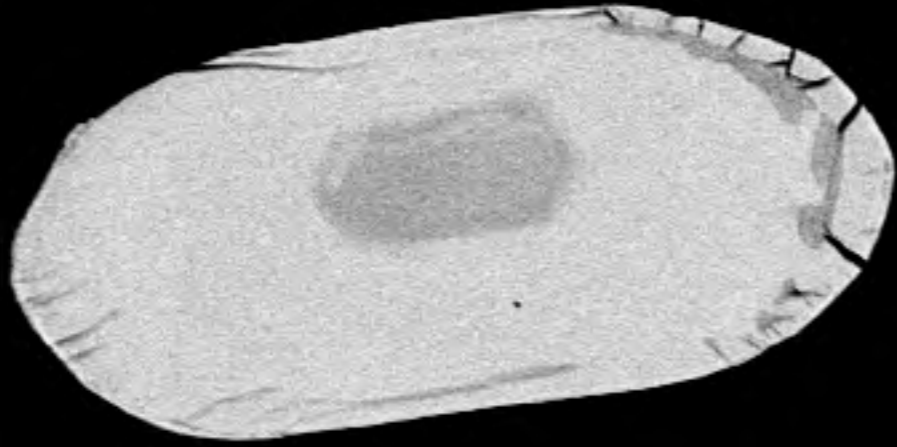
File Name = 12414-34.tif



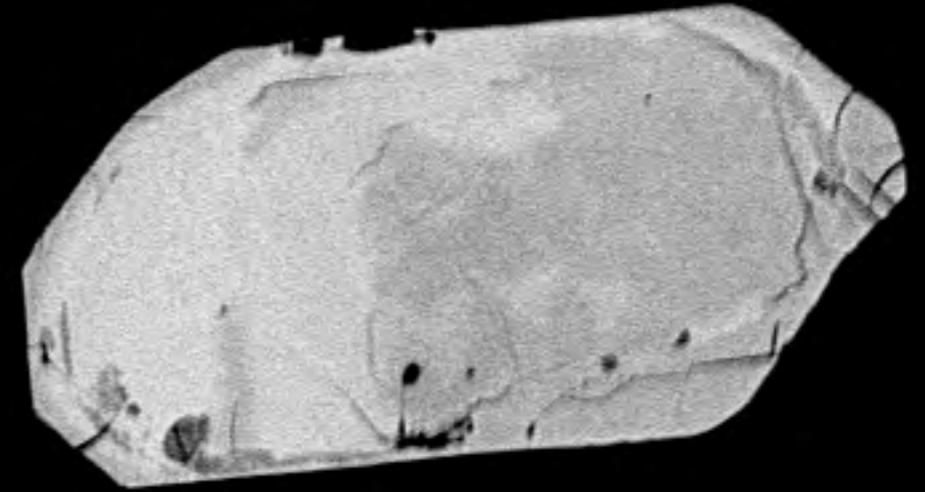
127



128



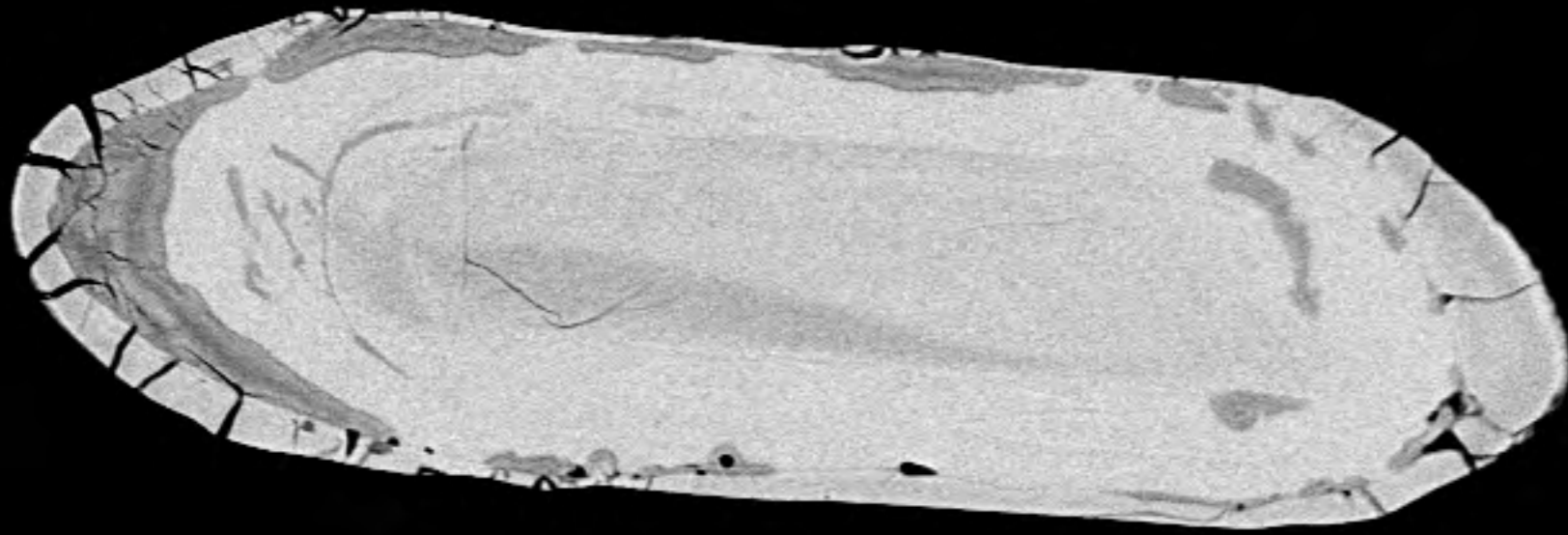
129



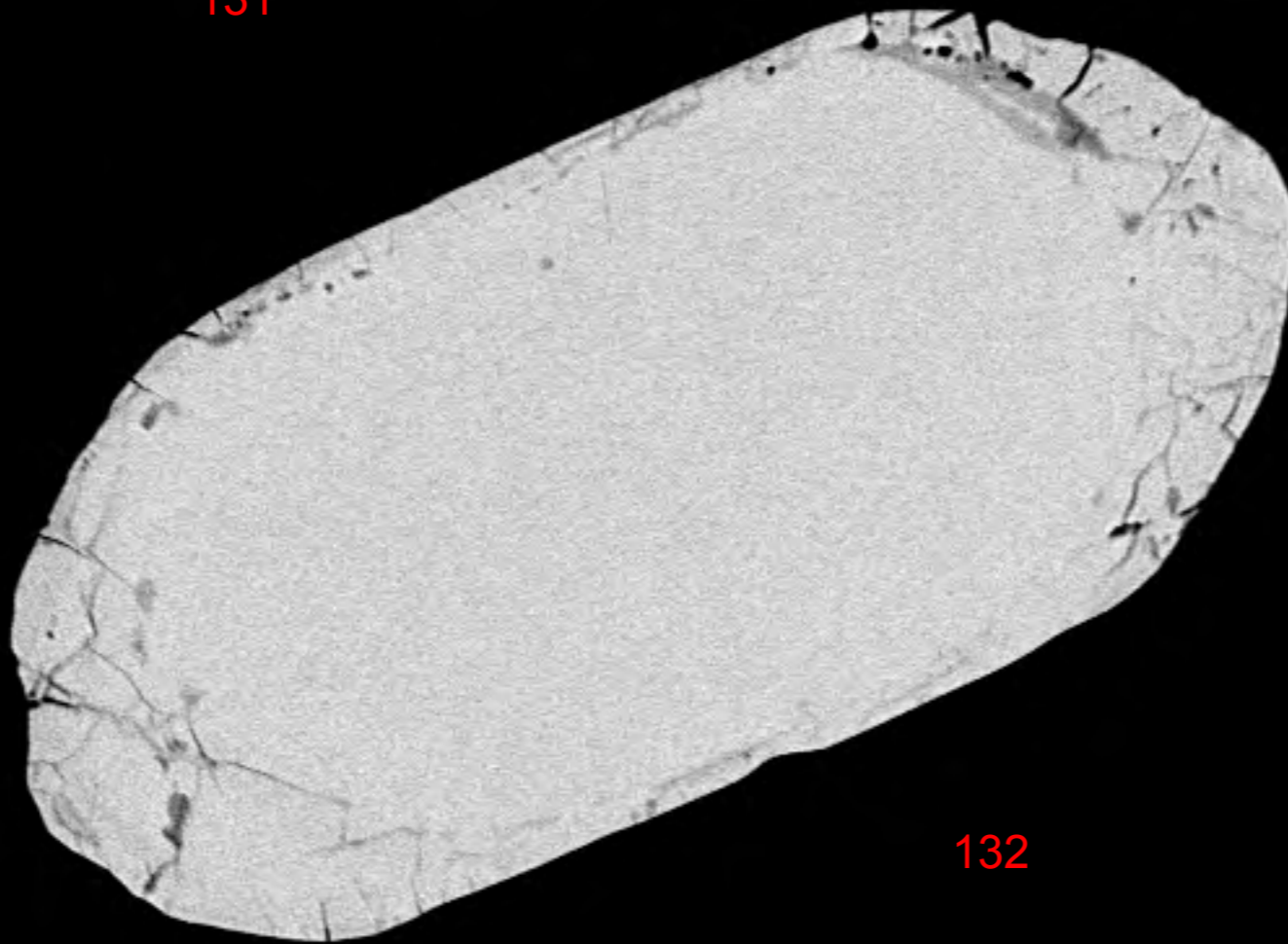
130

20  $\mu\text{m}^*$

File Name = 12414-35.tif



131

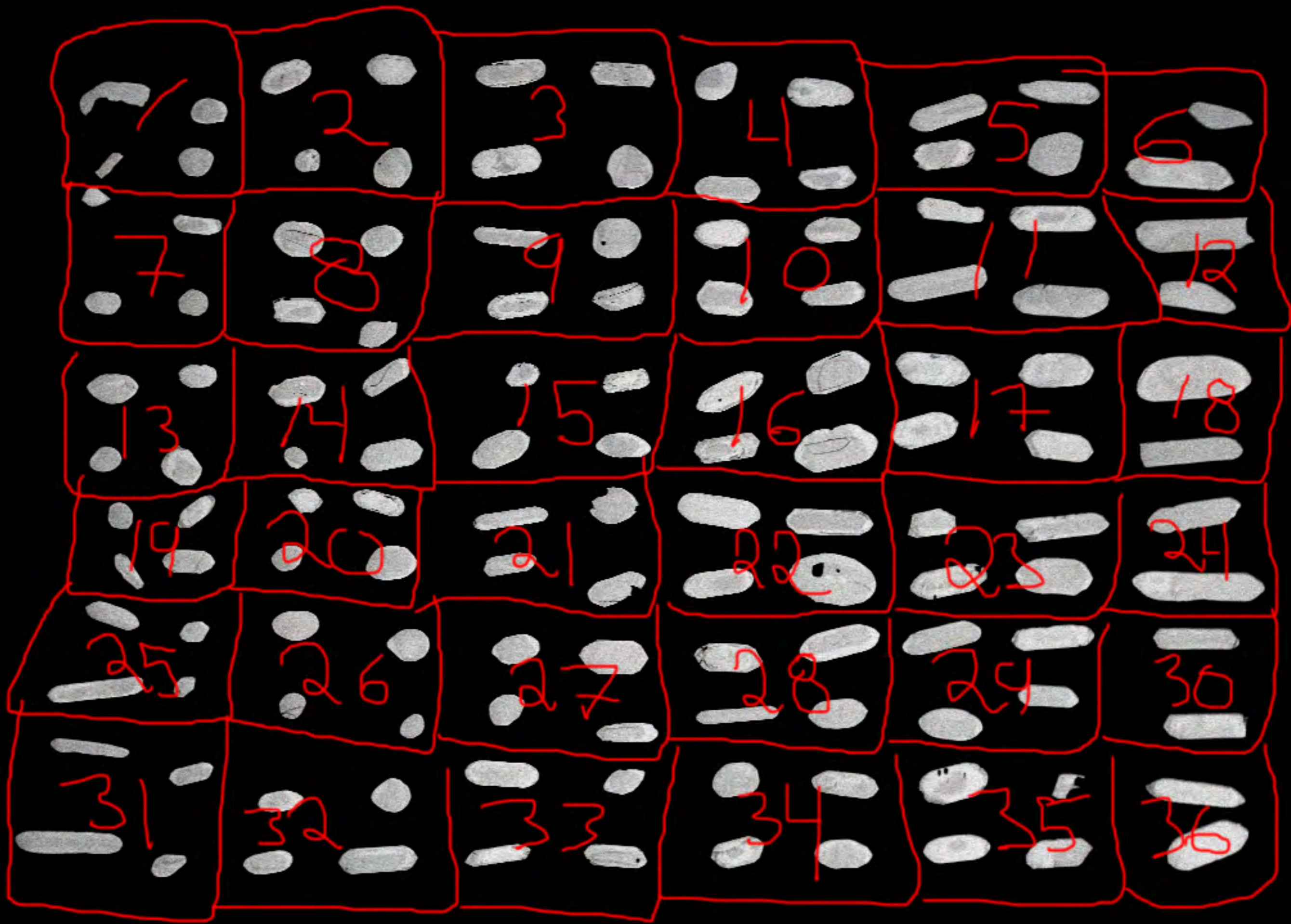


132

20  $\mu\text{m}^*$

File Name = 12414-36.tif





200 μm\*

IP-12414