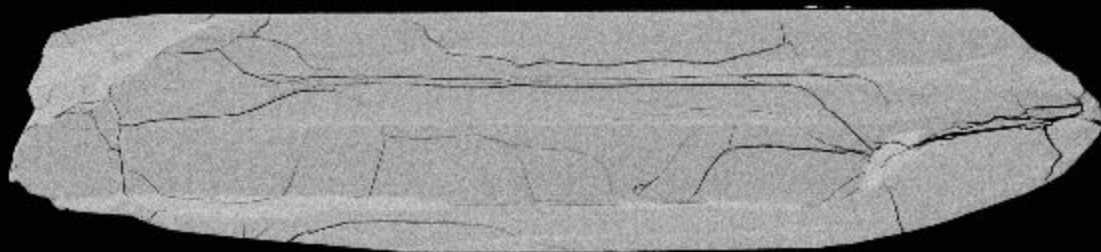
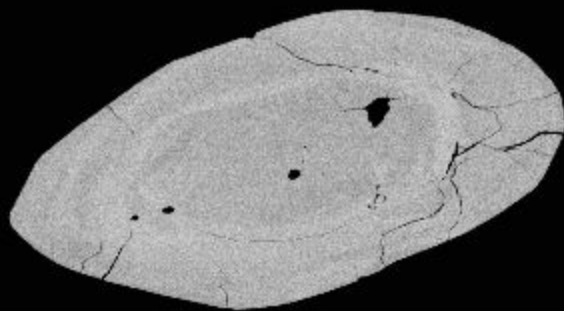


1



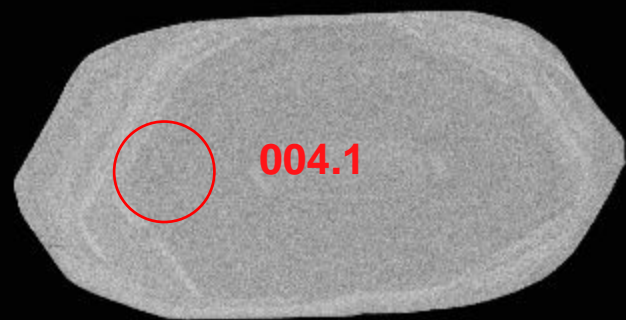
2



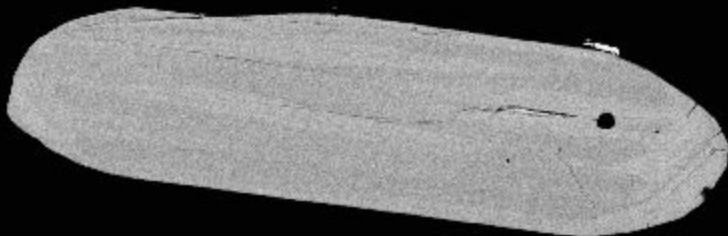
3



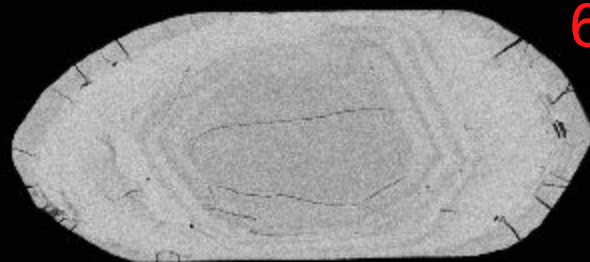
4



5

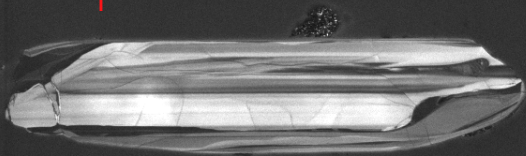


6

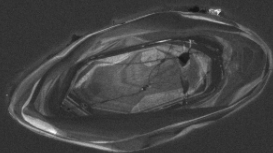


100µm

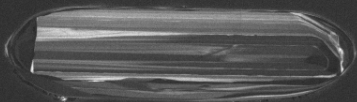
1



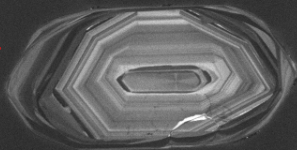
2



3



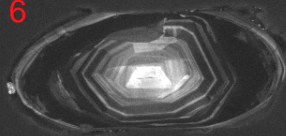
4



5



6



SEM HV: 10.0 kV

WD: 16.35 mm

SEM MAG: 517 x

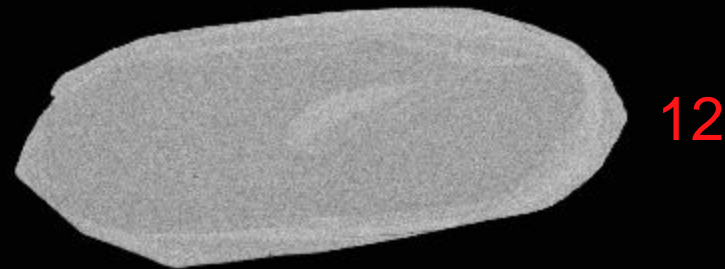
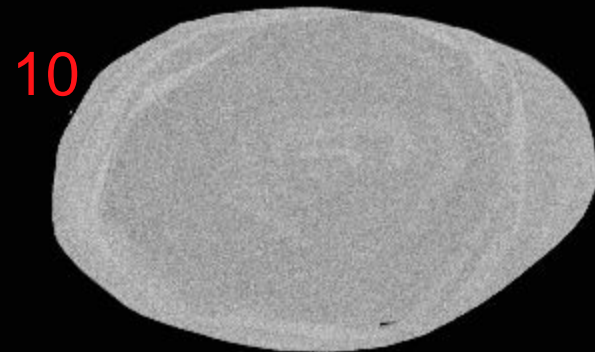
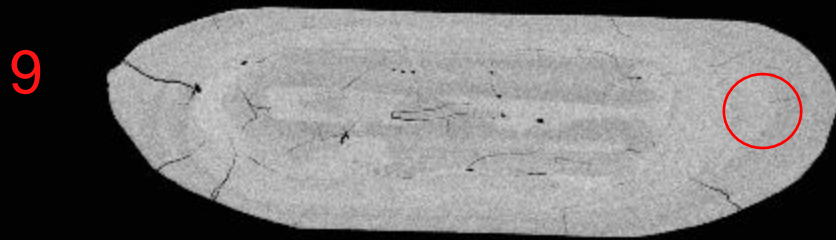
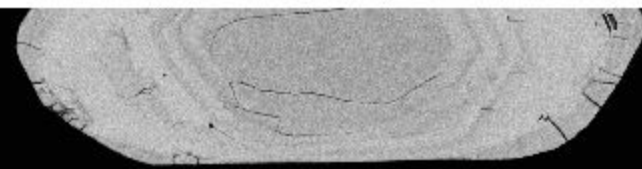
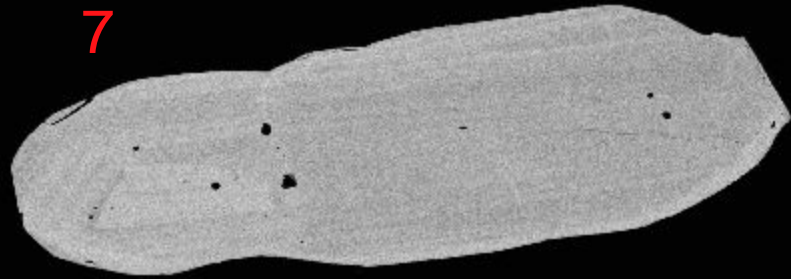
Det: CL

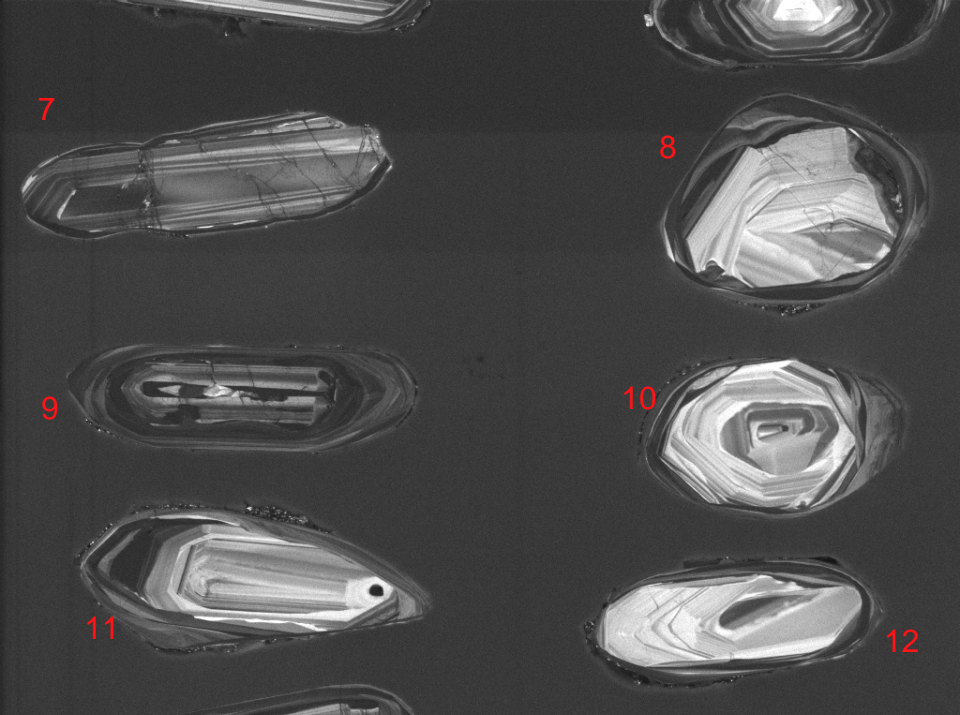
100 μm

MIRA3 TESCAN

12519-01-cl

NRCan LMS GSC





SEM HV: 10.0 kV

WD: 16.35 mm

SEM MAG: 560 x

Det: CL



100  $\mu$ m

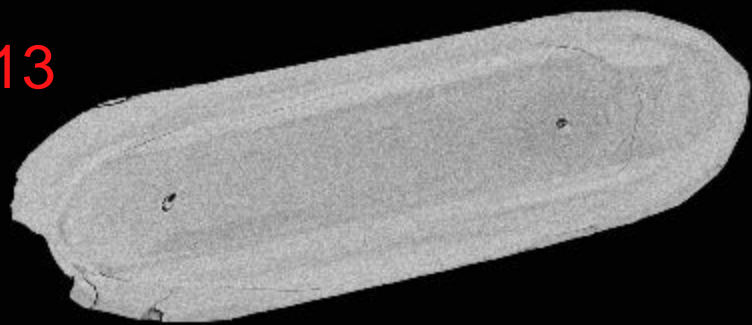
MIRA3 TESCAN

12519-02-cl

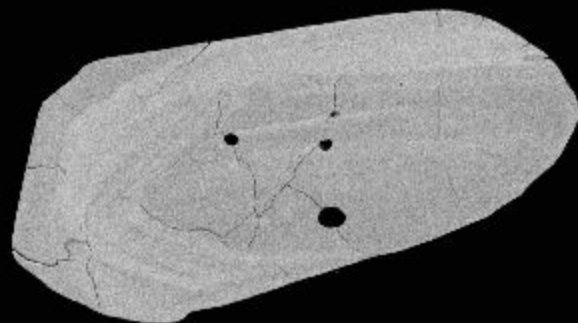
NRCan LMS GSC



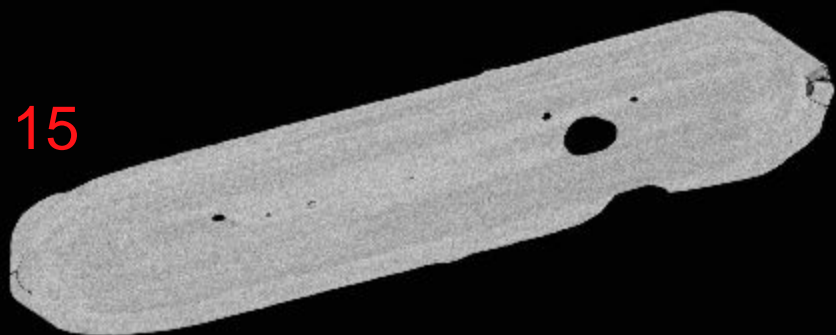
13



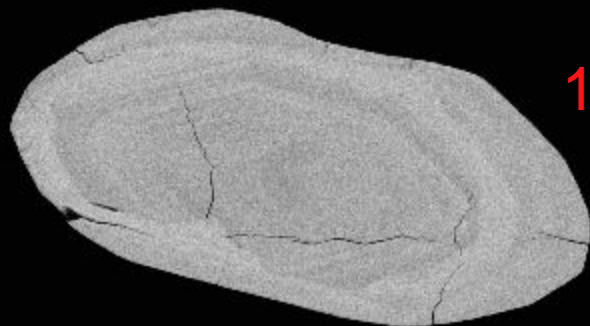
14



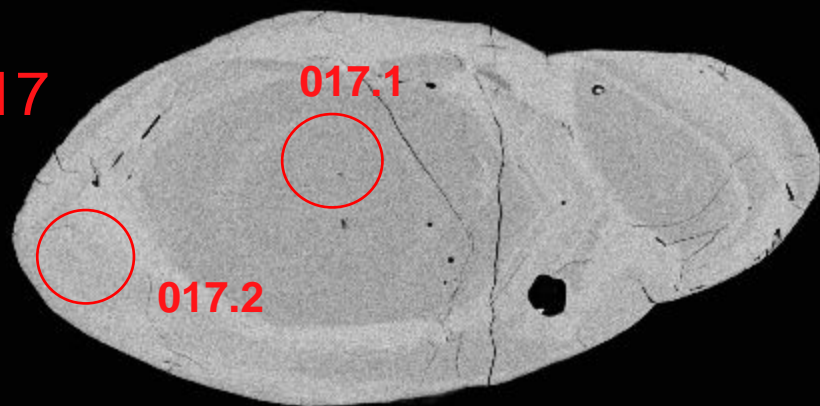
15



16



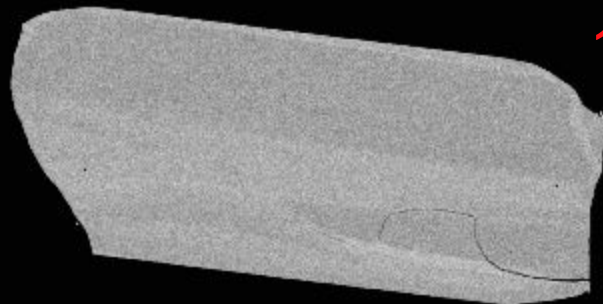
17



017.1

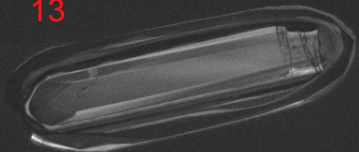
017.2

18

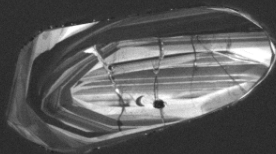


100µm

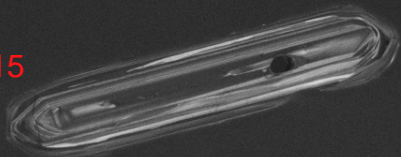
13



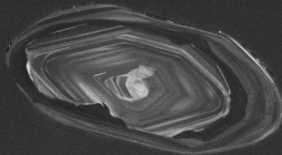
14



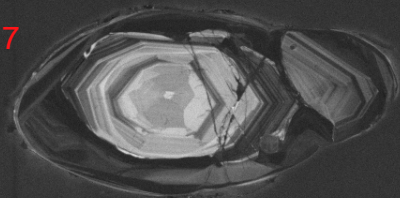
15



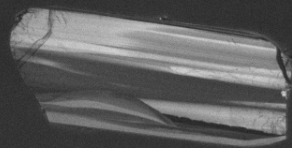
16



17



18



SEM HV: 10.0 kV

WD: 16.35 mm

SEM MAG: 593 x

Det: CL

100  $\mu$ m

MIRA3 TESCAN

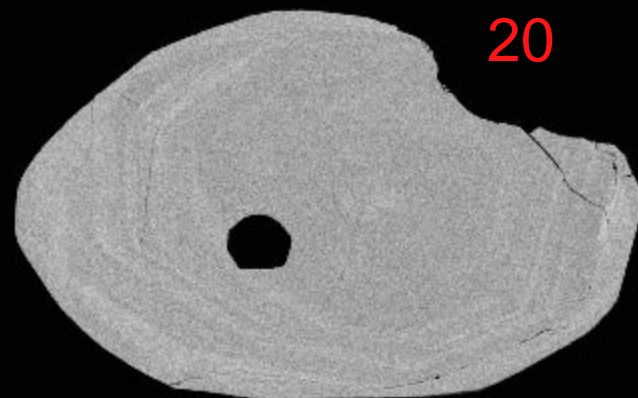
12519-03-cl

NRCan LMS GSC

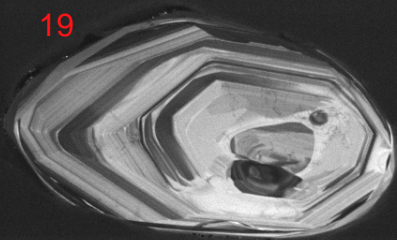
19



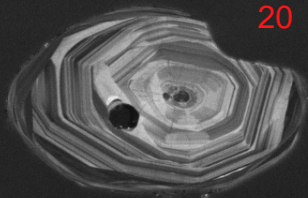
20



19



20



SEM HV: 10.0 kV

WD: 16.35 mm

SEM MAG: 661 x

Det: CL



100  $\mu$ m

MIRA3 TESCAN

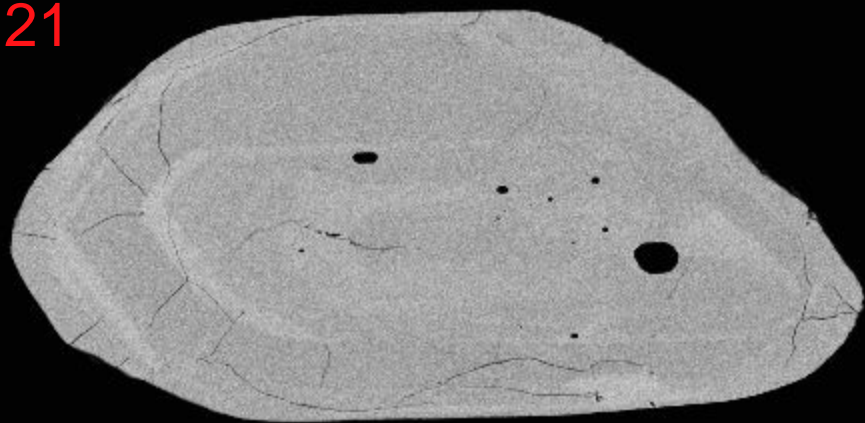
12519-04-cl

NRCan LMS GSC

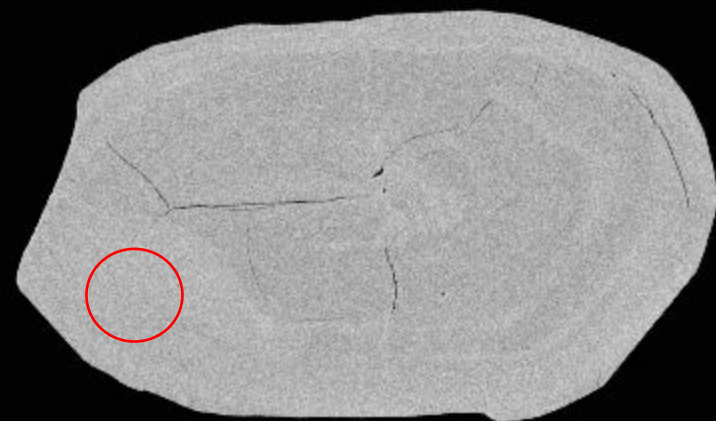




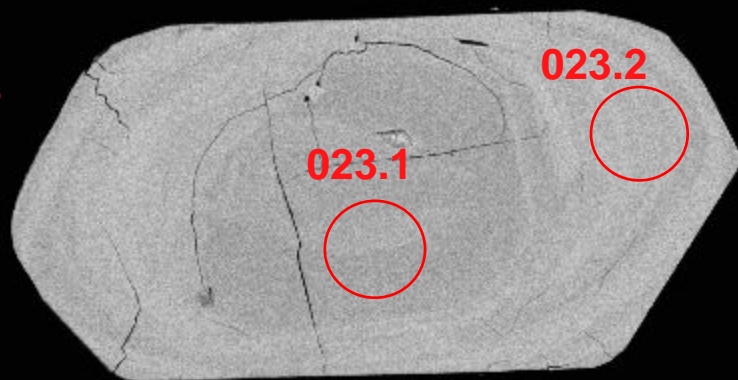
21



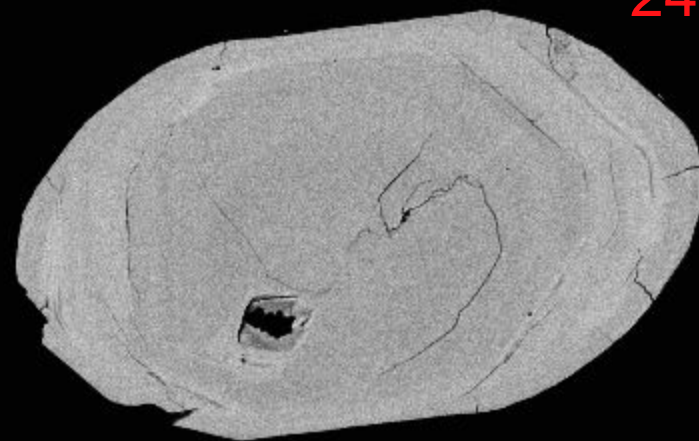
22

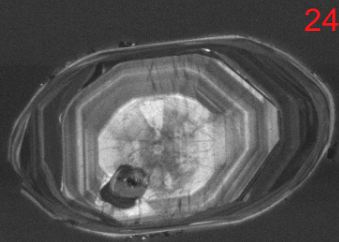
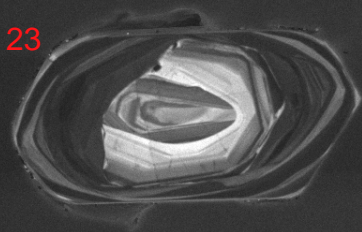
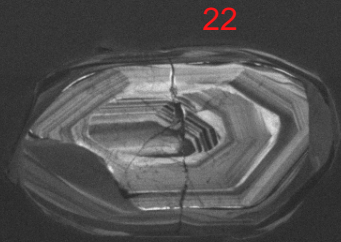
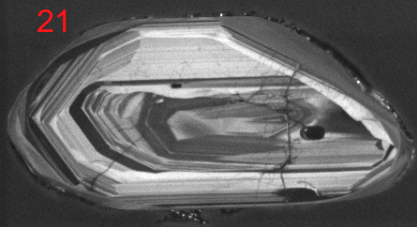


23



24





SEM HV: 10.0 kV

WD: 16.35 mm

SEM MAG: 807 x

Det: CL



MIRA3 TESCAN

100  $\mu$ m

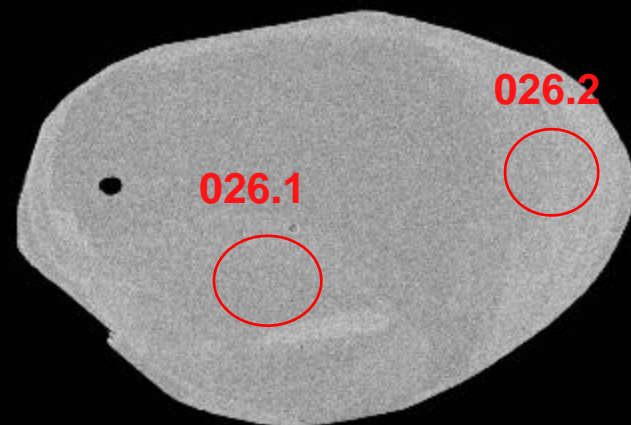
12519-05-cl

NRCan LMS GSC

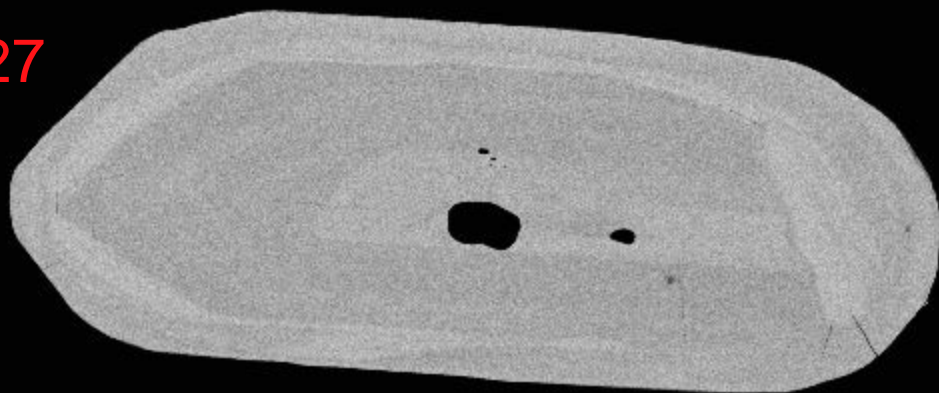
25



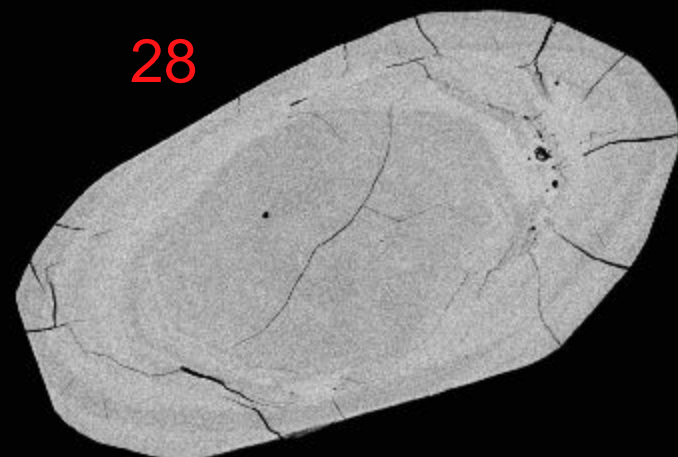
26



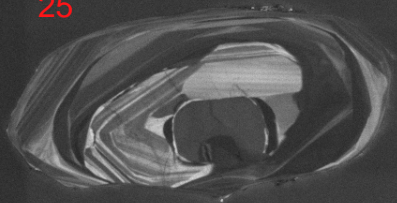
27



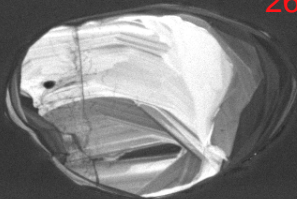
28



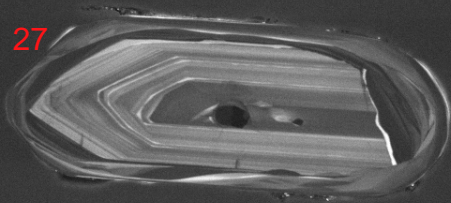
25



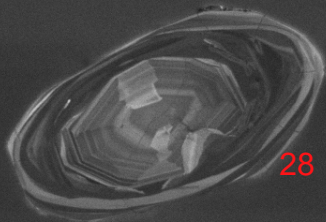
26



27



28



SEM HV: 10.0 kV

WD: 16.35 mm

SEM MAG: 772 x

Det: CL

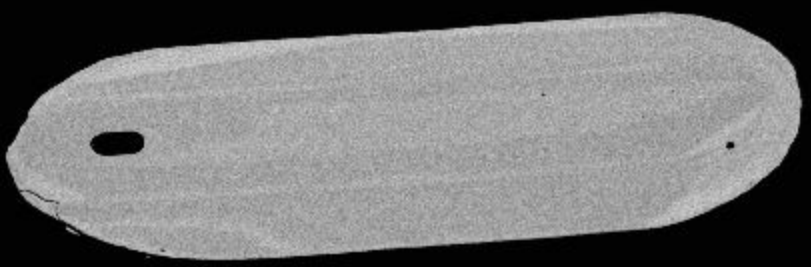
100  $\mu$ m

MIRA3 TESCAN

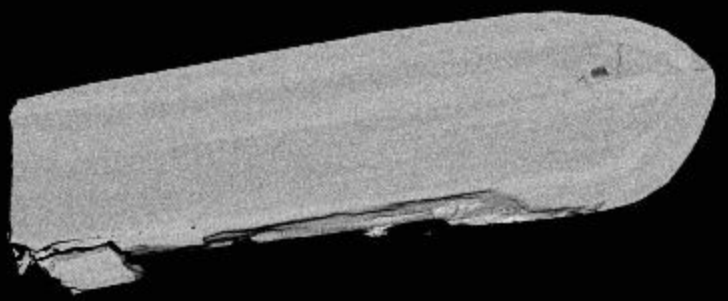
12519-06-cl

NRCan LMS GSC

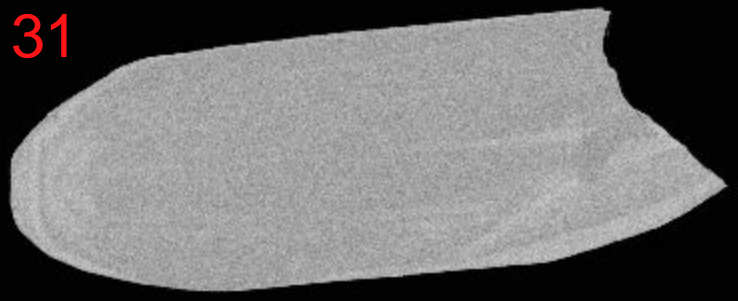
29



30



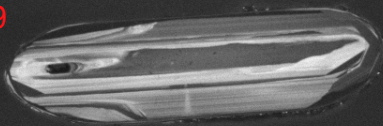
31



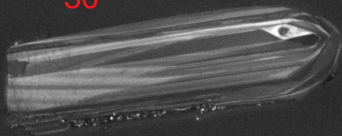
32



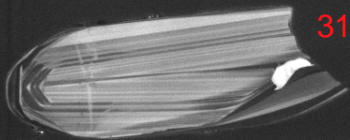
29



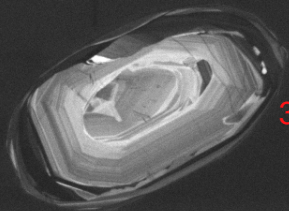
30



31



32



SEM HV: 10.0 kV

WD: 16.35 mm

SEM MAG: 716 x

Det: CL



100  $\mu$ m

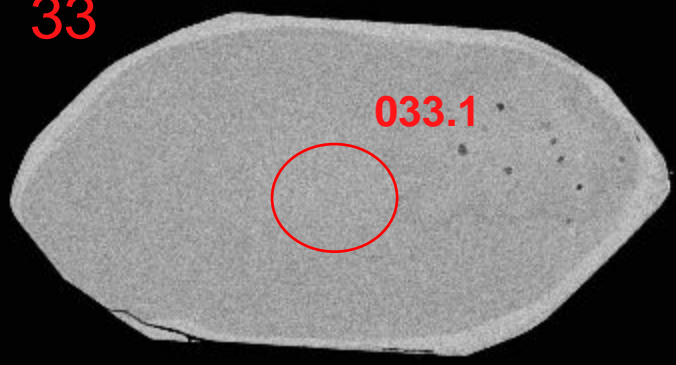
MIRA3 TESCAN

12519-07-cl

NRCan LMS GSC

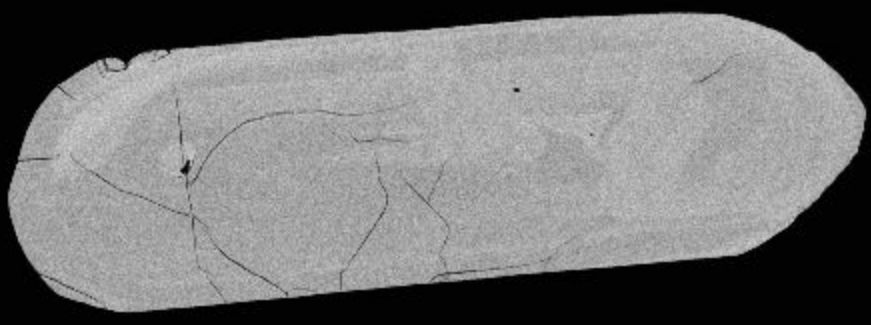


33

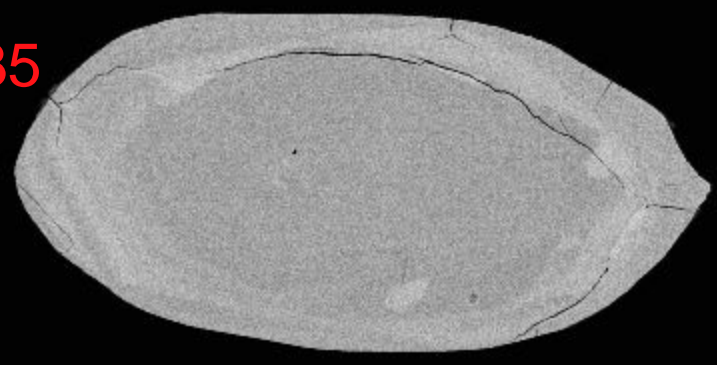


033.1

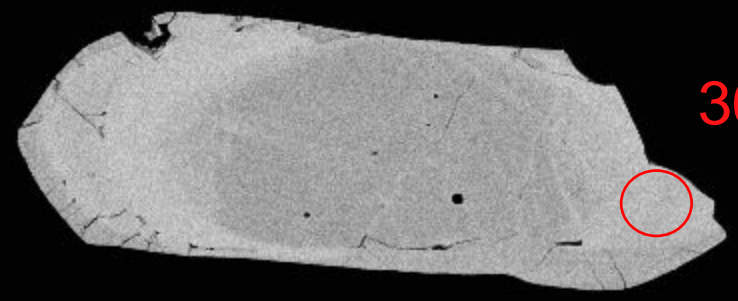
34



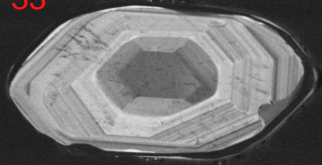
35



36



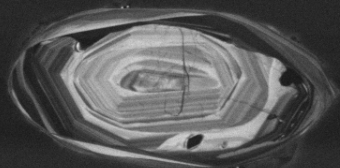
33



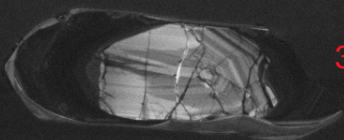
34



35



36



SEM HV: 10.0 kV

WD: 16.35 mm

SEM MAG: 716 x

Det: CL



100  $\mu$ m

MIRA3 TESCAN

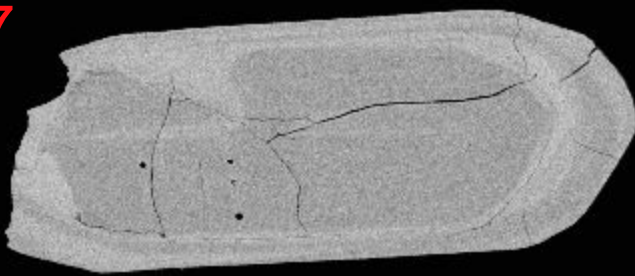
12519-08-cl

NRCan LMS GSC

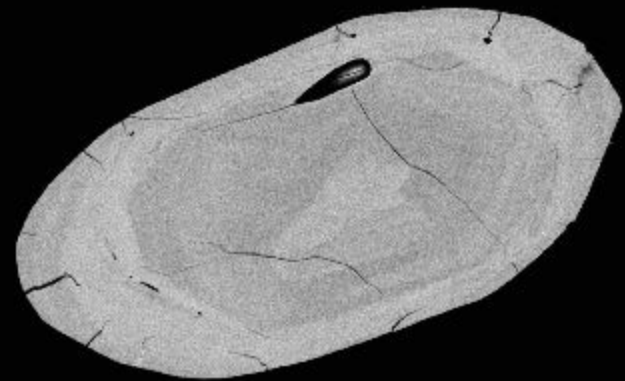




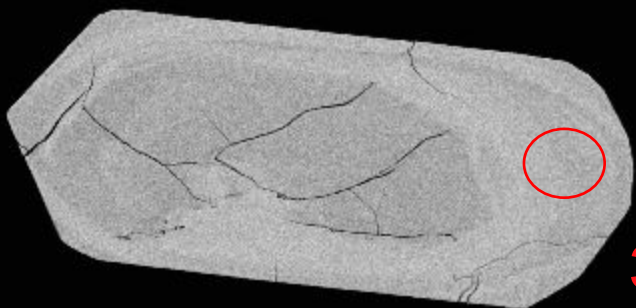
37



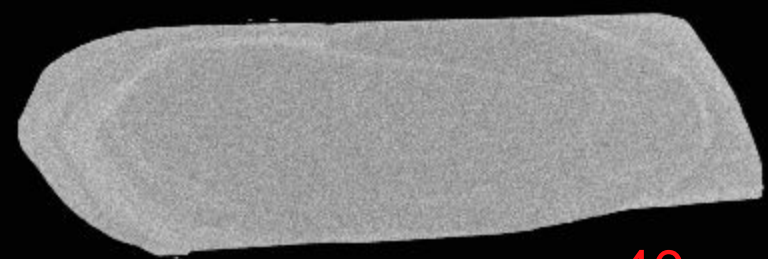
38



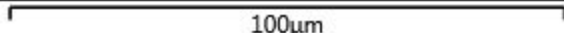
39



40



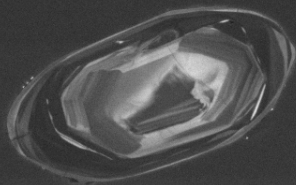
100µm



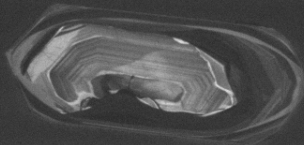
37



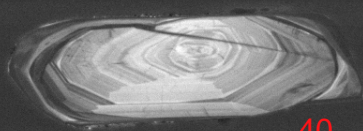
38



39



40



SEM HV: 10.0 kV

WD: 16.35 mm

SEM MAG: 748 x

Det: CL



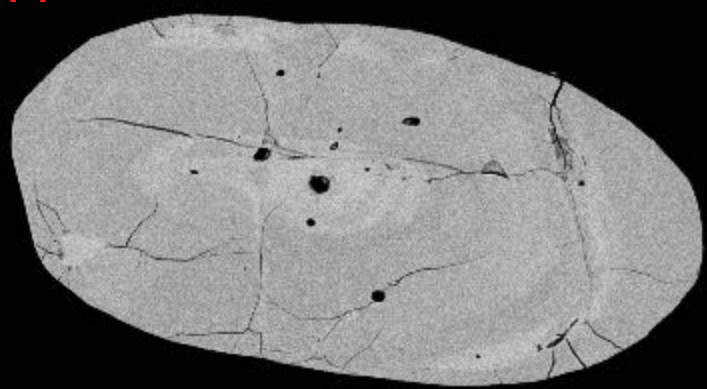
100  $\mu$ m

MIRA3 TESCAN

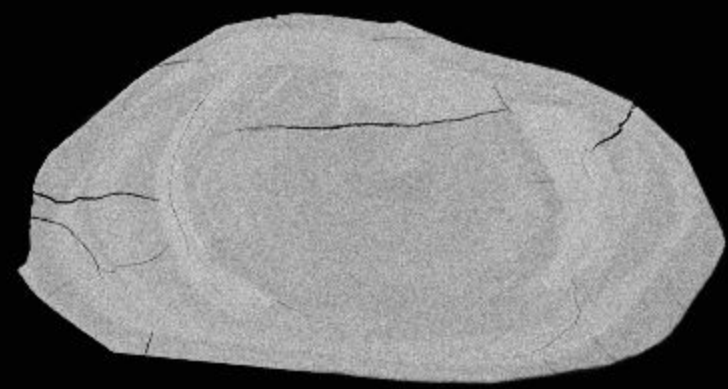
12519-09-cl

NRCan LMS GSC

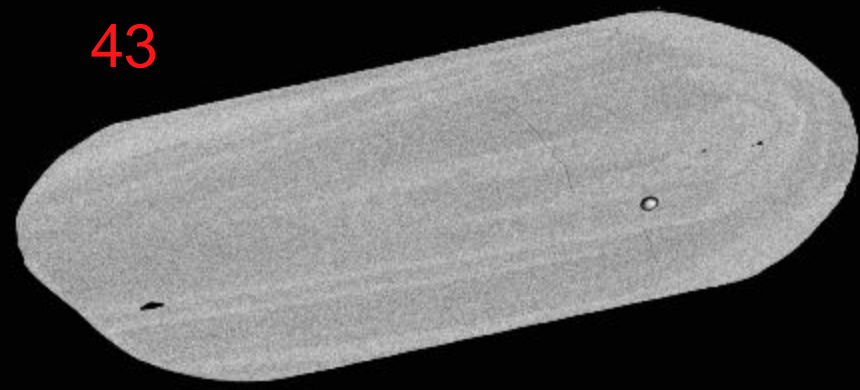
41



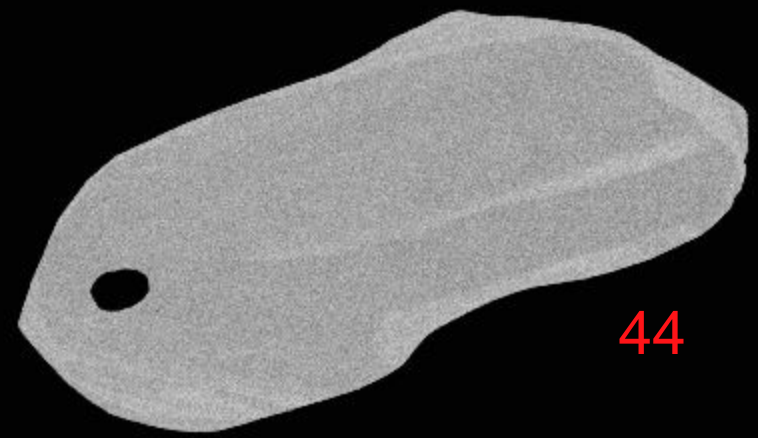
42



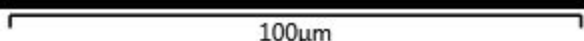
43



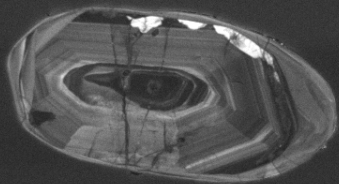
44



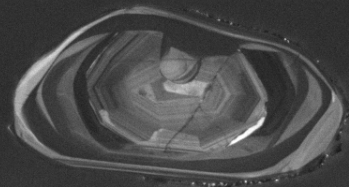
100µm



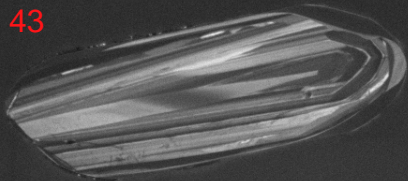
41



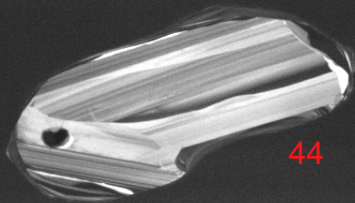
42



43



44



SEM HV: 10.0 kV

WD: 16.35 mm

SEM MAG: 770 x

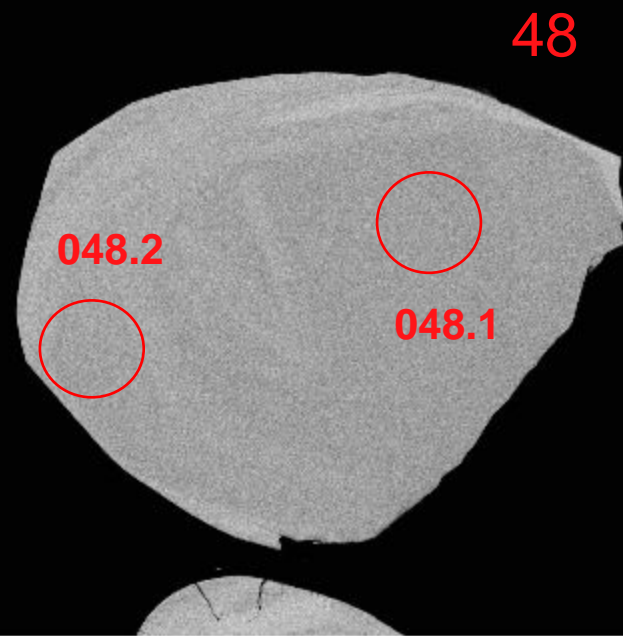
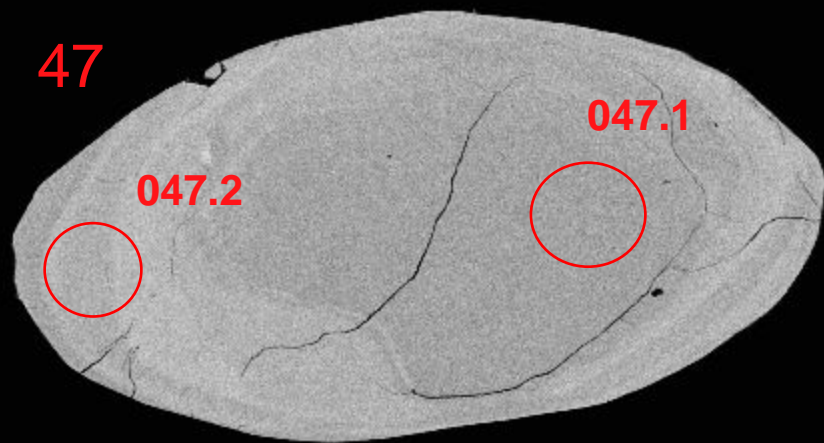
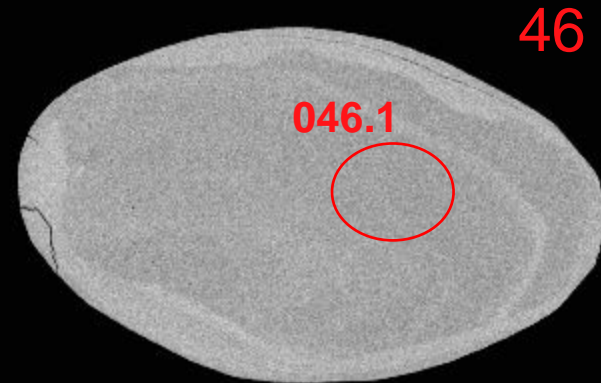
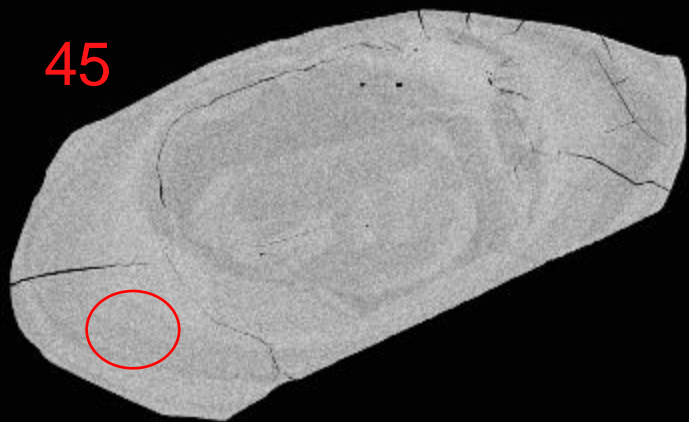
Det: CL

100  $\mu$ m

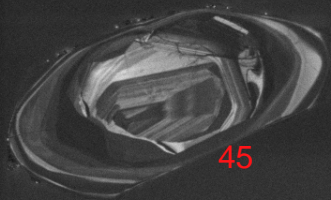
MIRA3 TESCAN

12519-10-cl

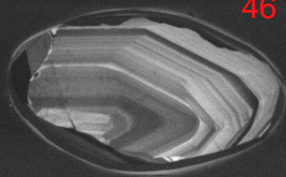
NRCan LMS GSC



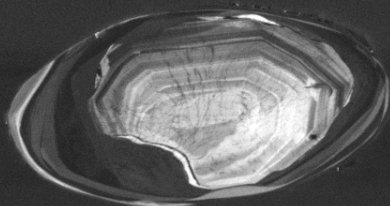
100µm



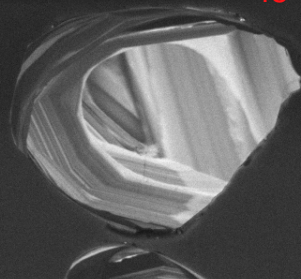
45



46



47



48

SEM HV: 10.0 kV

WD: 16.35 mm

SEM MAG: 790 x

Det: CL



100  $\mu$ m

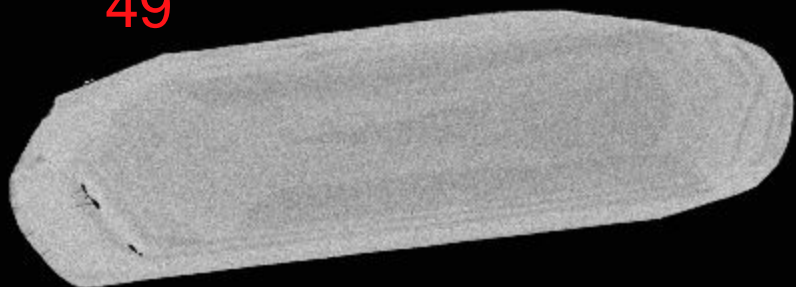
MIRA3 TESCAN

12519-11-cl

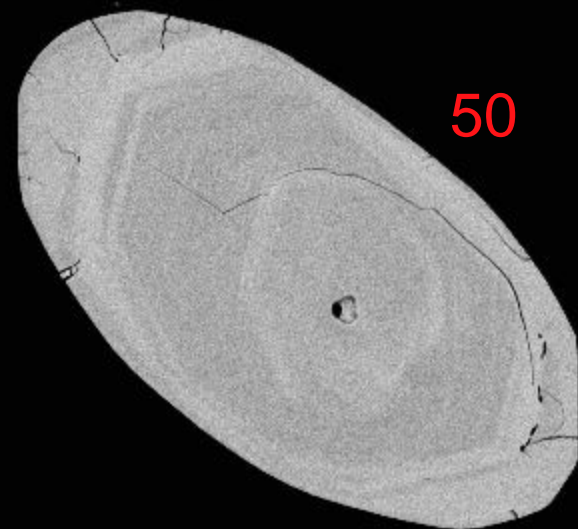
NRCan LMS GSC



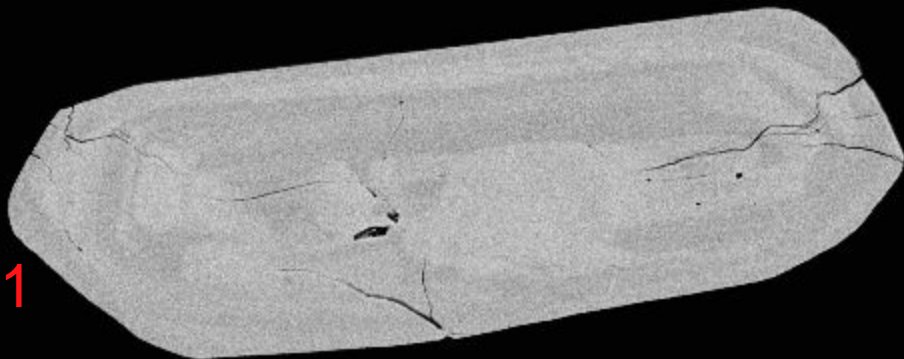
49



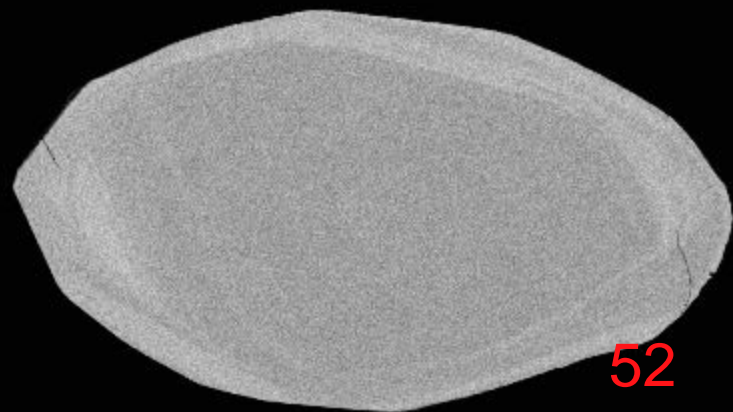
50



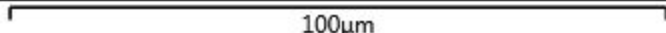
51



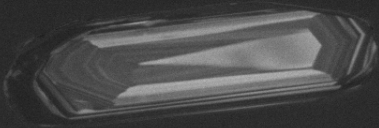
52



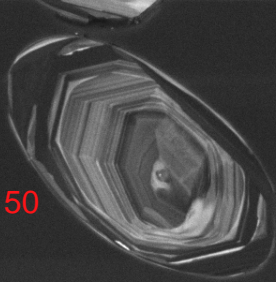
100µm



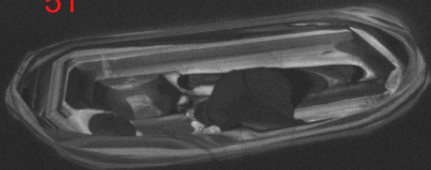
49



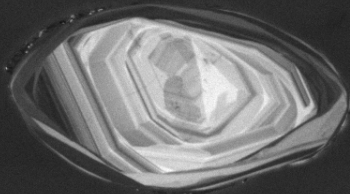
50



51



52



SEM HV: 10.0 kV

WD: 16.35 mm

SEM MAG: 885 x

Det: CL



50  $\mu$ m

MIRA3 TESCAN

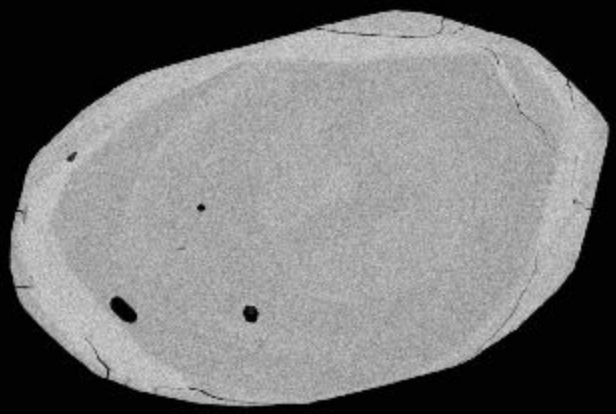
12519-12-cl

NRCan LMS GSC

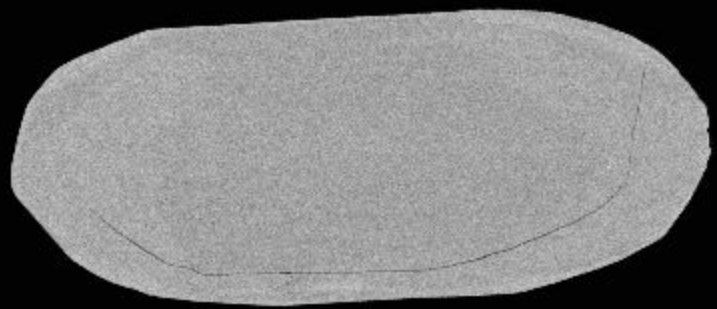




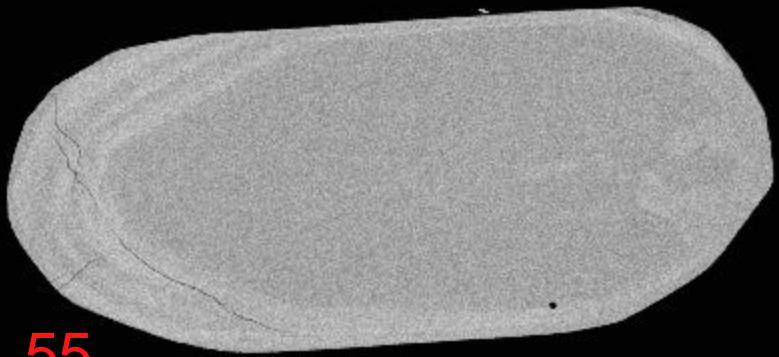
53



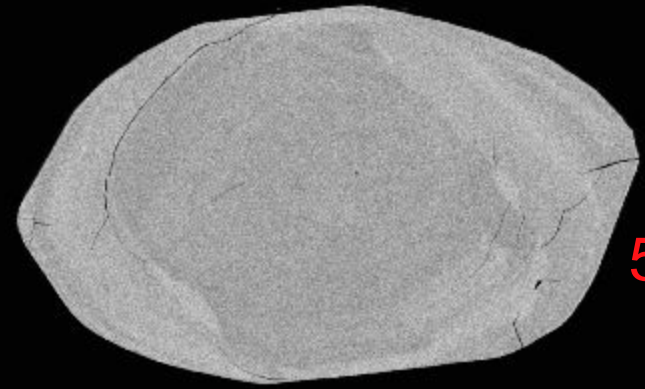
54



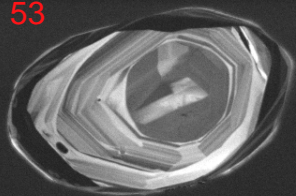
55



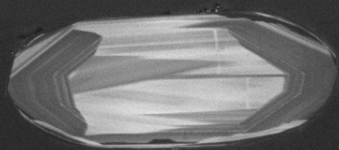
56



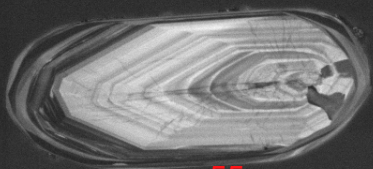
53



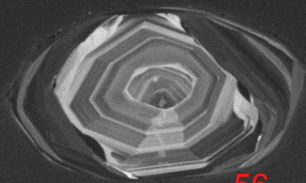
54



55



56



SEM HV: 10.0 kV

WD: 16.35 mm

SEM MAG: 765 x

Det: CL

100 µm

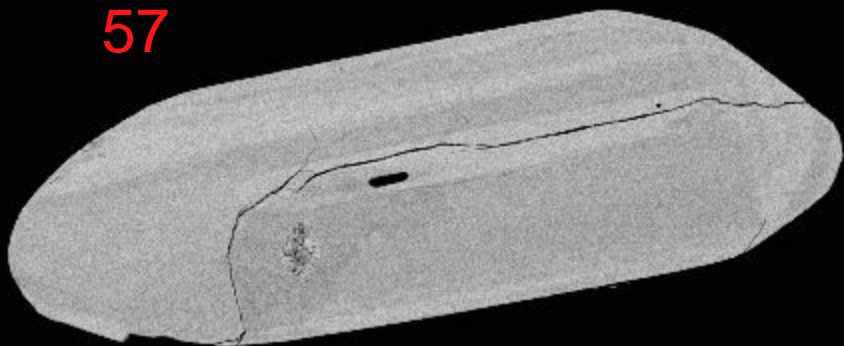
MIRA3 TESCAN

12519-13-cl

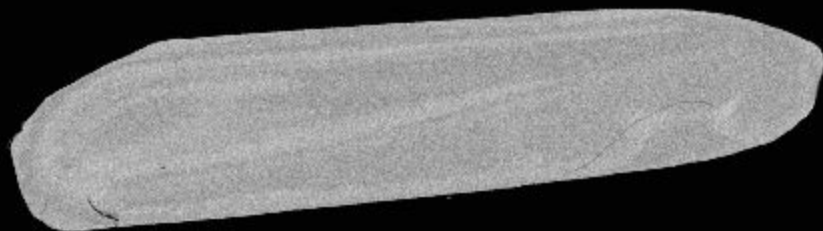
NRCan LMS GSC



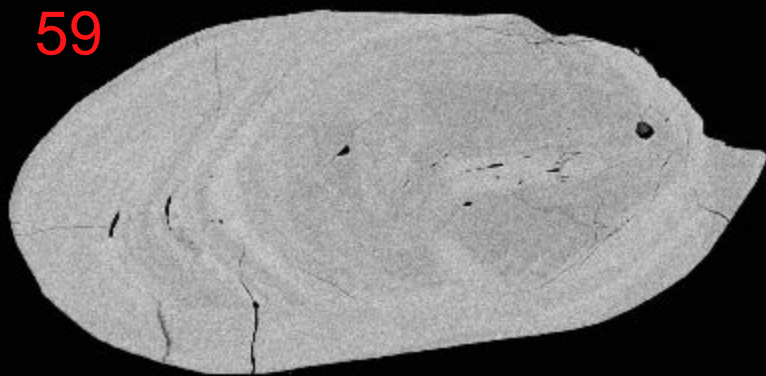
57



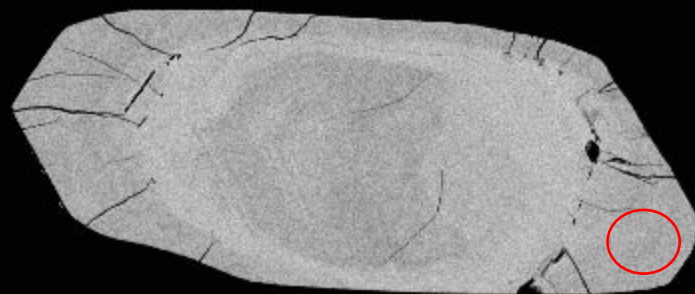
58



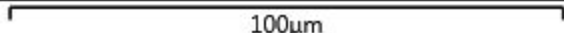
59



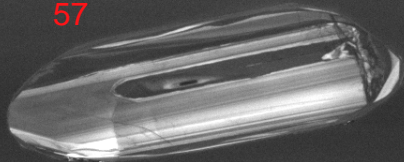
60



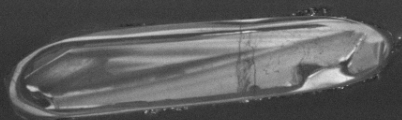
100µm



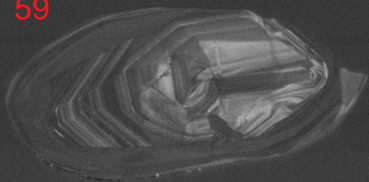
57



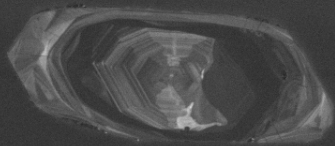
58



59



60



SEM HV: 10.0 kV

WD: 16.35 mm

SEM MAG: 746 x

Det: CL



100  $\mu$ m

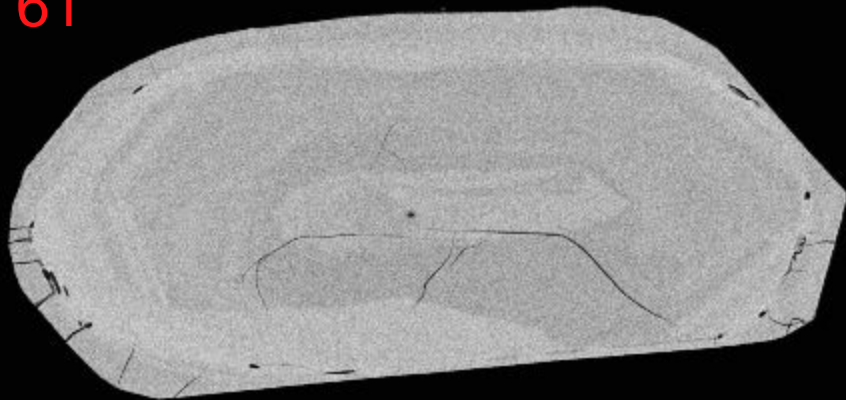
MIRA3 TESCAN

12519-14-cl

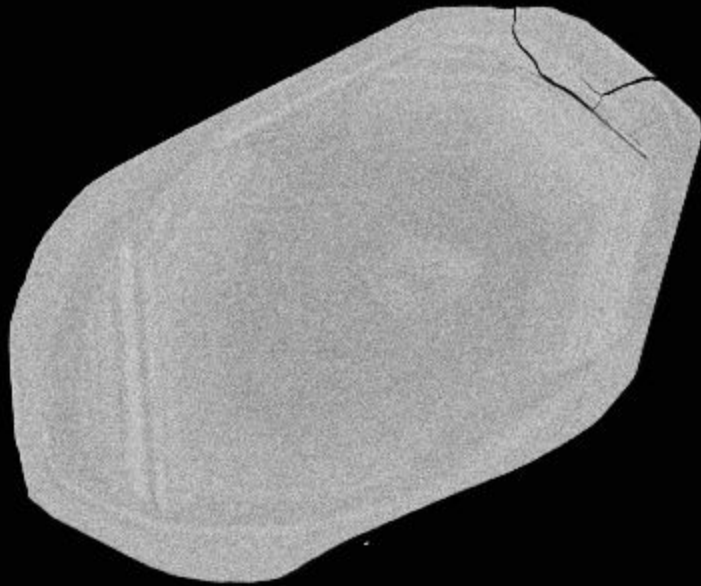
NRCan LMS GSC



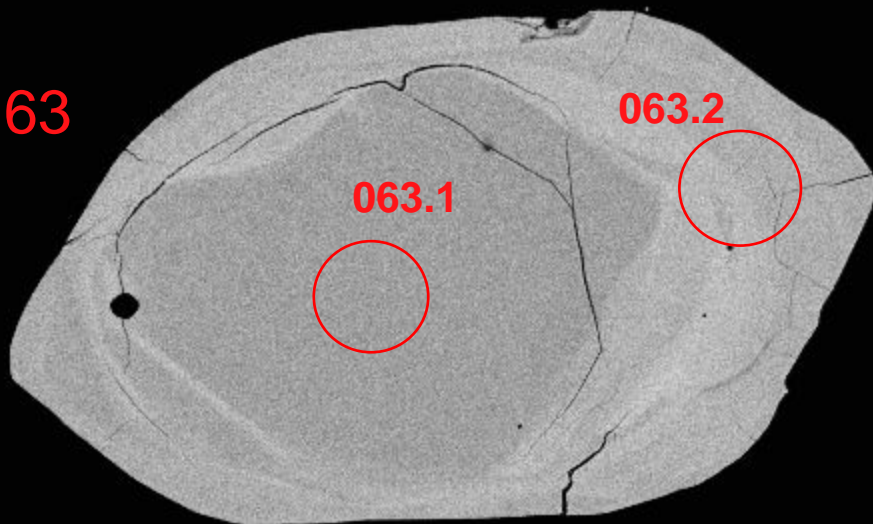
61



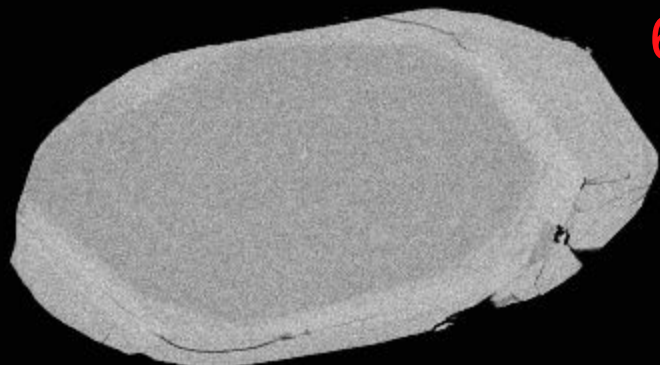
62



63



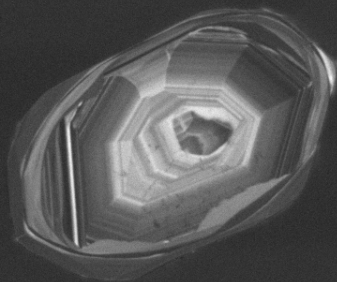
64



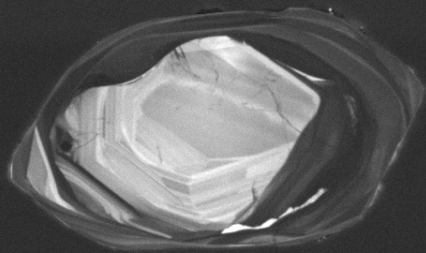
100µm



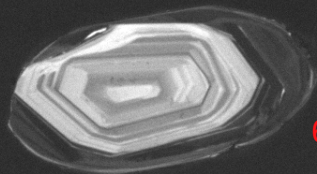
61



62



63



64

SEM HV: 10.0 kV

WD: 16.35 mm

SEM MAG: 975 x

Det: CL



50  $\mu$ m

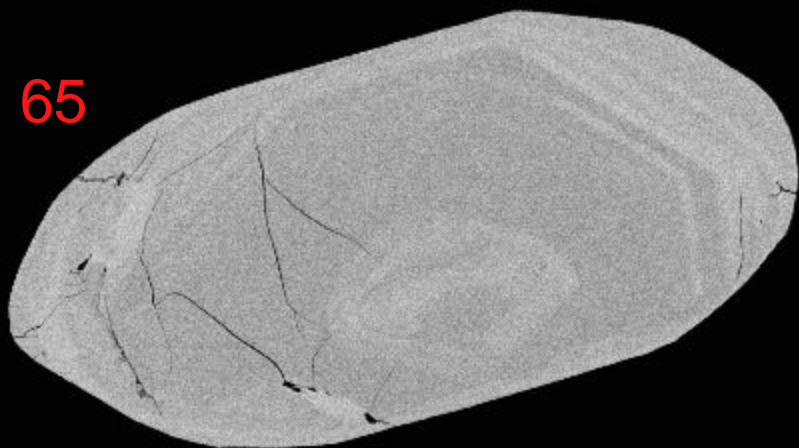
MIRA3 TESCAN

12519-15-cl

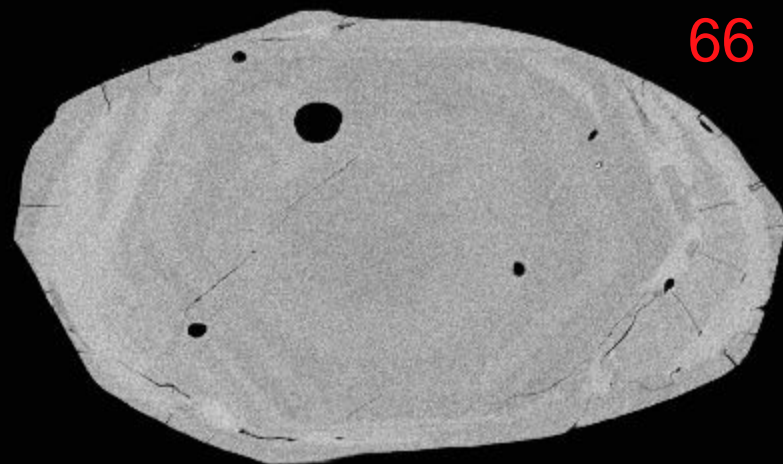
NRCan LMS GSC



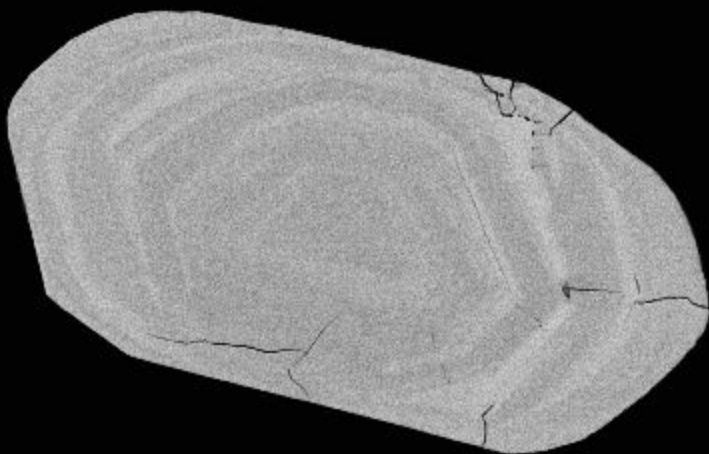
65



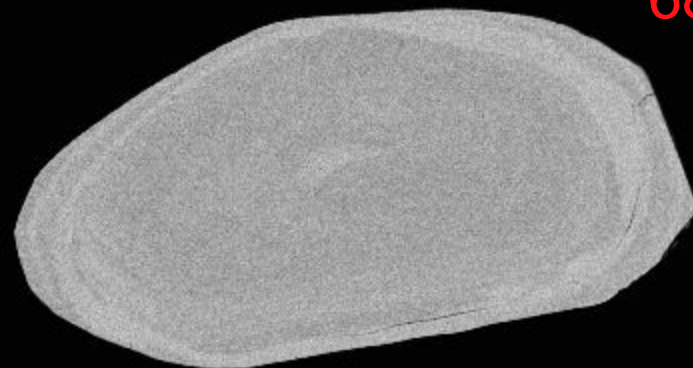
66



67

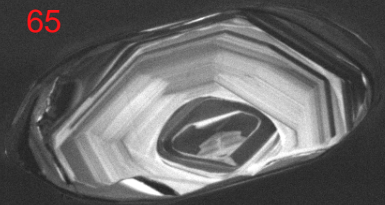


68

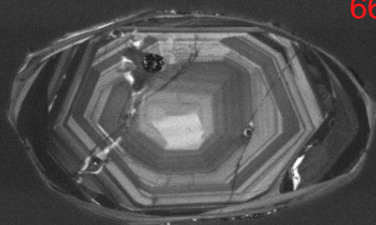


100µm

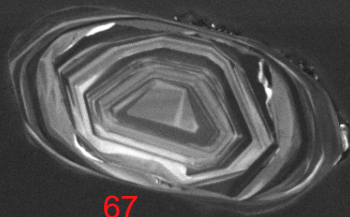
65



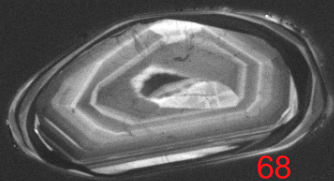
66



67



68



SEM HV: 10.0 kV

WD: 16.35 mm

SEM MAG: 904 x

Det: CL

50  $\mu$ m

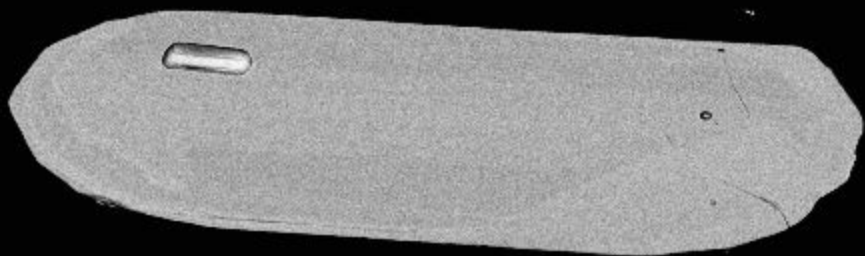
MIRA3 TESCAN

12519-16-cl

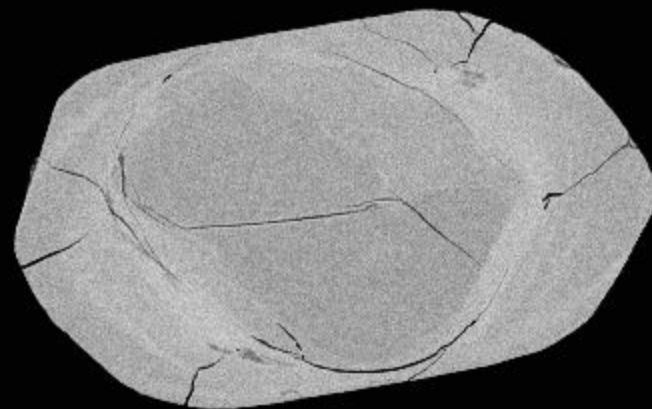
NRCan LMS GSC



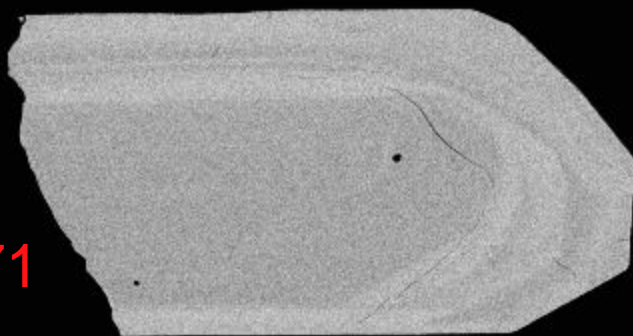
69



70



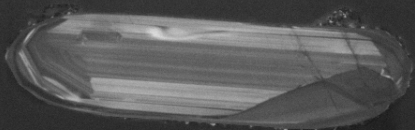
71



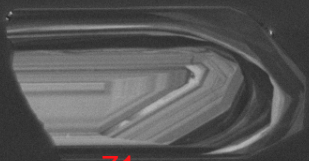
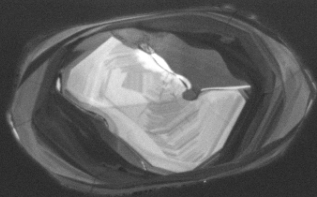
72



69

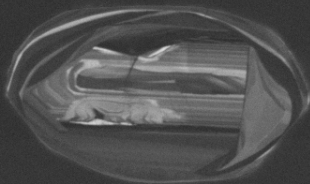


70



71

72



SEM HV: 10.0 kV

WD: 16.35 mm

MIRA3 TESCAN

SEM MAG: 873 x

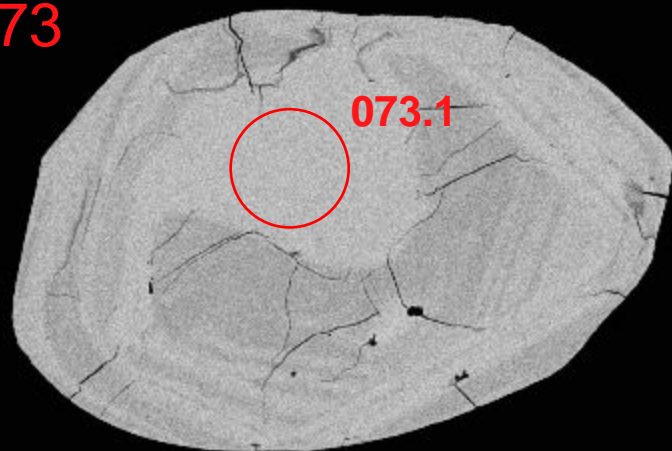
Det: CL

100 μm

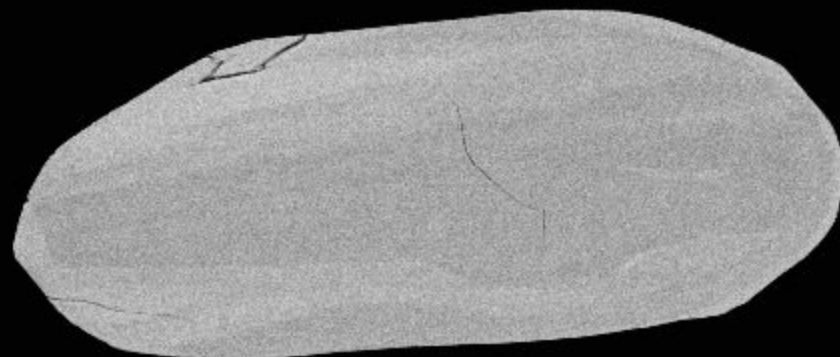
12519-17-cl

NRCan LMS GSC

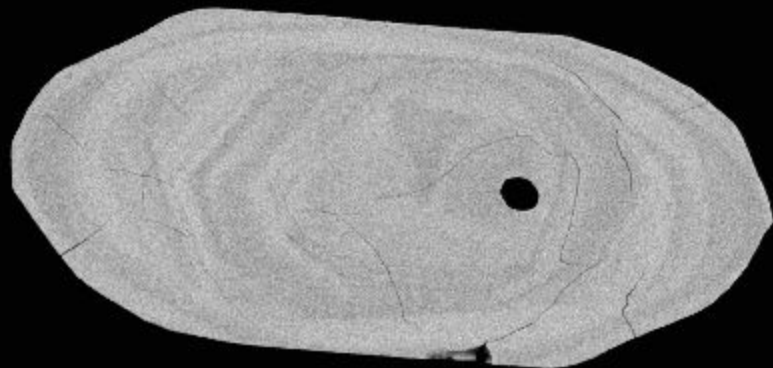
73



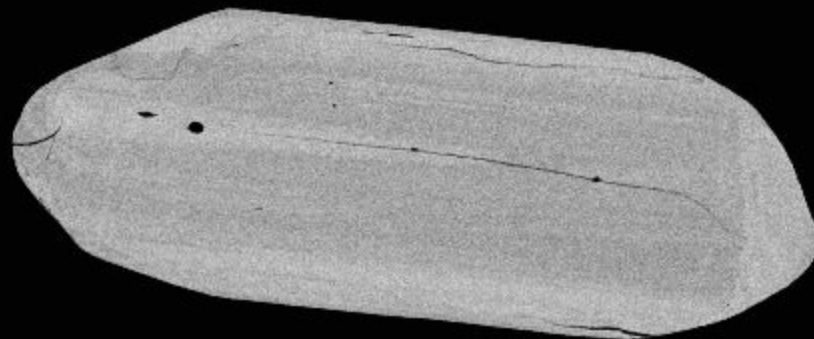
74



75



76

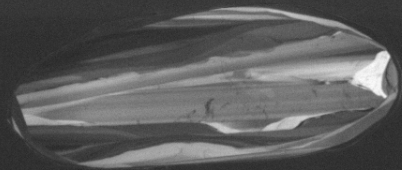


100µm

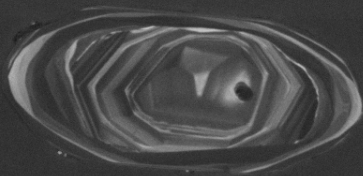
73



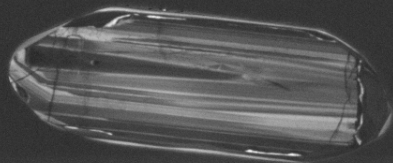
74



75



76



SEM HV: 10.0 kV

WD: 16.35 mm

MIRA3 TESCAN

SEM MAG: 873 x

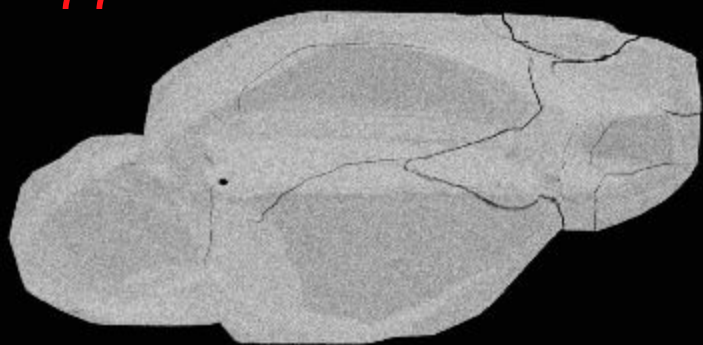
Det: CL

100 µm

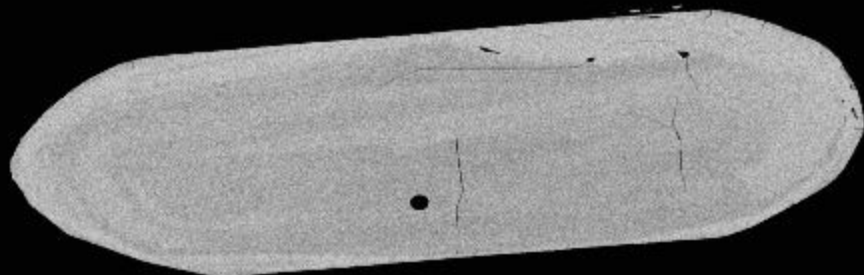
12519-18-cl

NRCan LMS GSC

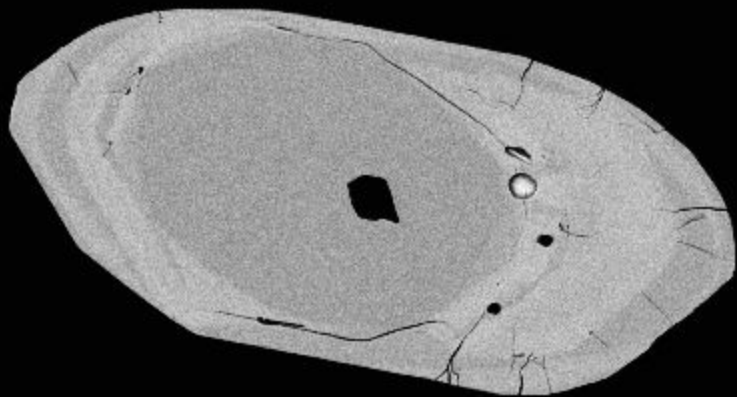
77



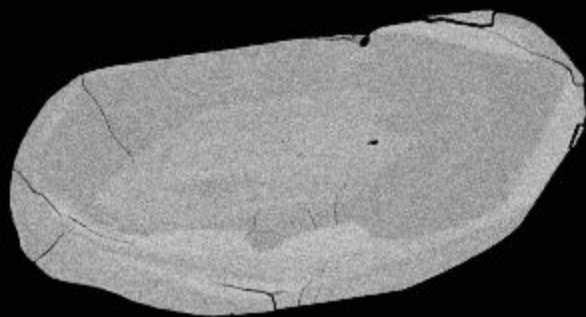
78



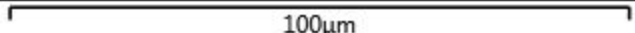
79



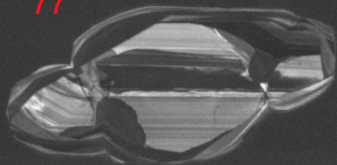
80



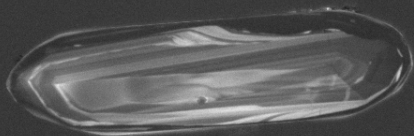
100µm



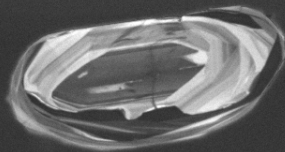
77



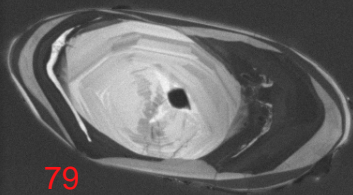
78



80



79



SEM HV: 10.0 kV

WD: 16.35 mm

SEM MAG: 835 x

Det: CL

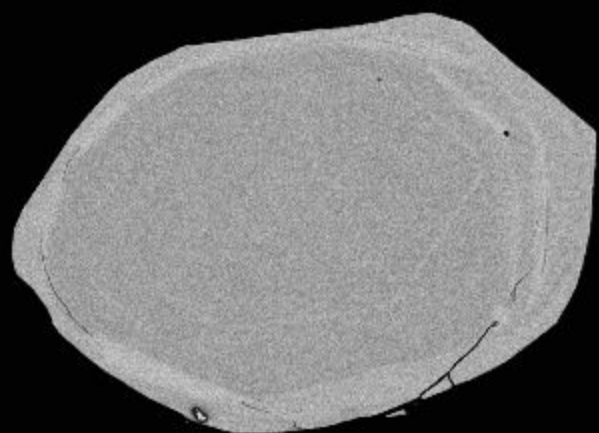
100 µm

MIRA3 TESCAN

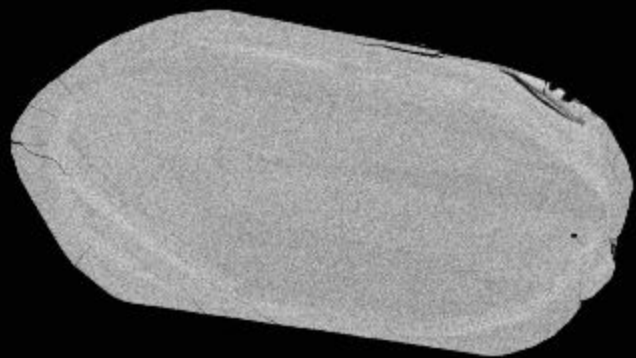
12519-19-cl

NRCan LMS GSC

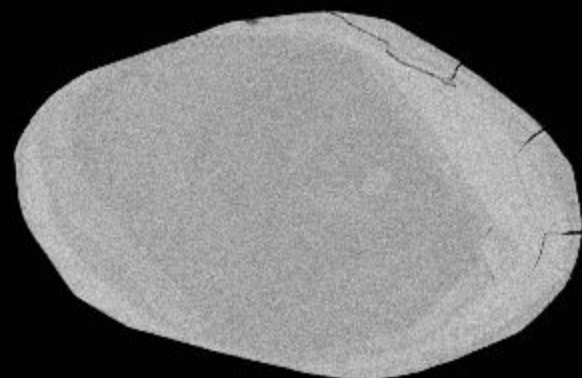
81



82

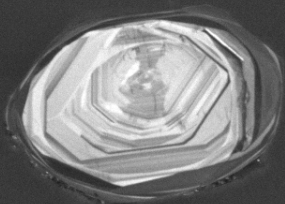


83

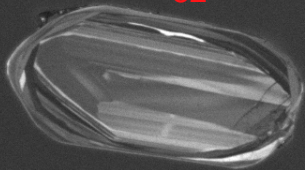


100µm

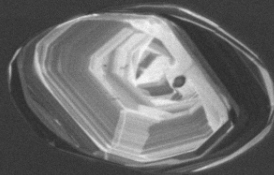
81



82



83



SEM HV: 10.0 kV

WD: 16.35 mm

SEM MAG: 897 x

Det: CL



50  $\mu$ m

MIRA3 TESCAN

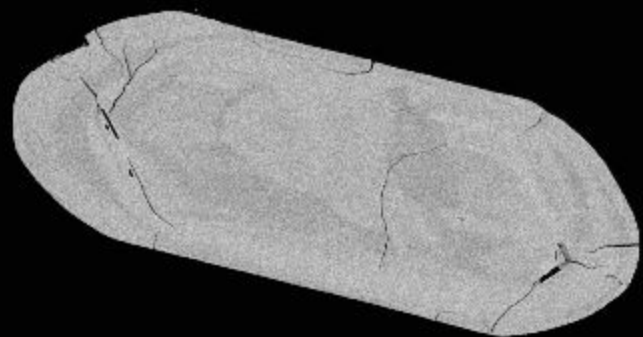
12519-20-cl

NRCan LMS GSC

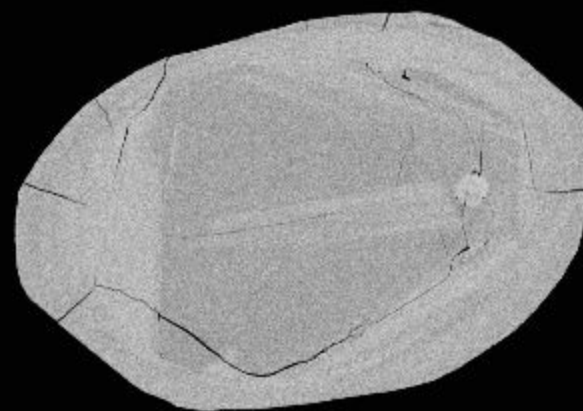




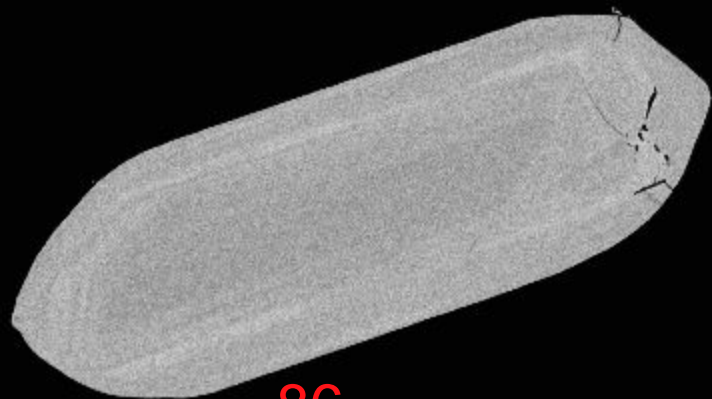
84



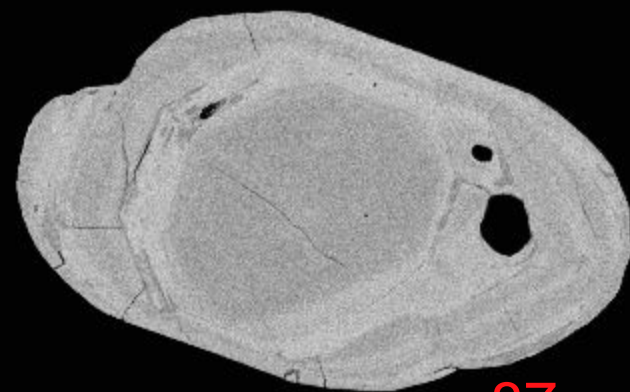
85



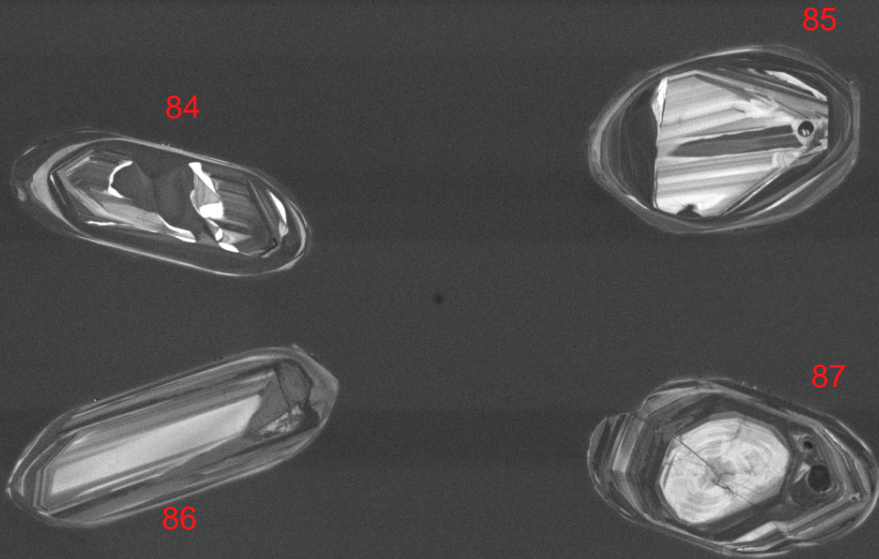
86



87



100µm



84

85

86

87

SEM HV: 10.0 kV

WD: 16.35 mm

SEM MAG: 819 x

Det: CL



100  $\mu$ m

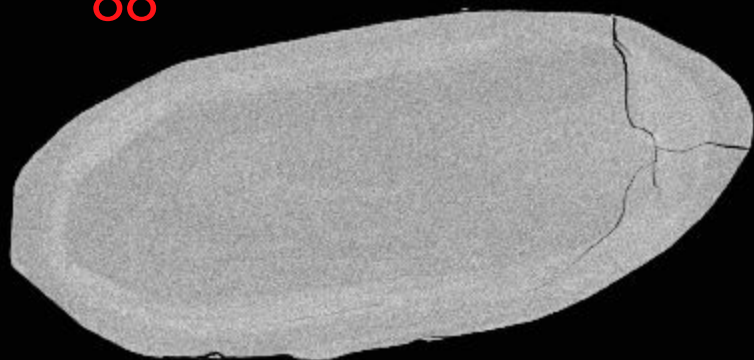
MIRA3 TESCAN

12519-21-cl

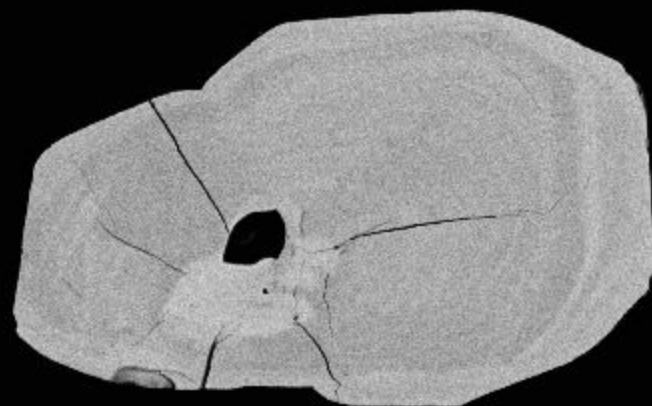
NRCan LMS GSC



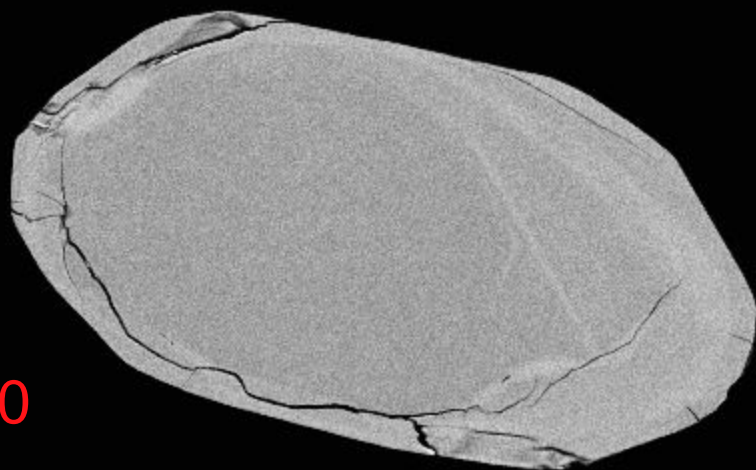
88



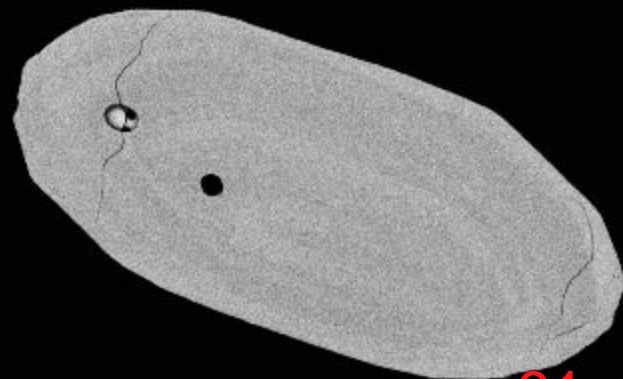
89



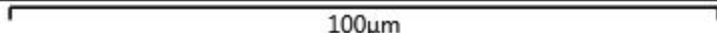
90



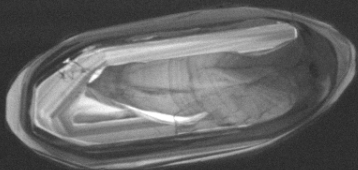
91



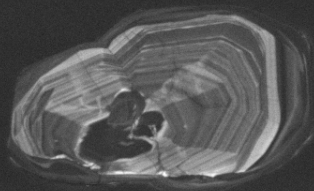
100µm



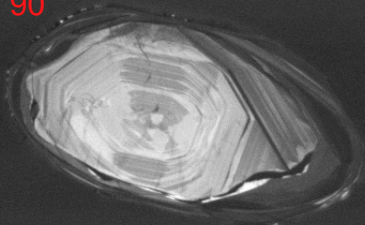
88



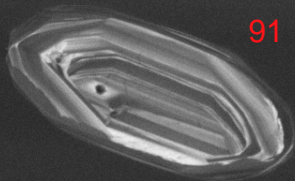
89



90



91



SEM HV: 10.0 kV

WD: 16.35 mm

SEM MAG: 955 x

Det: CL



50  $\mu$ m

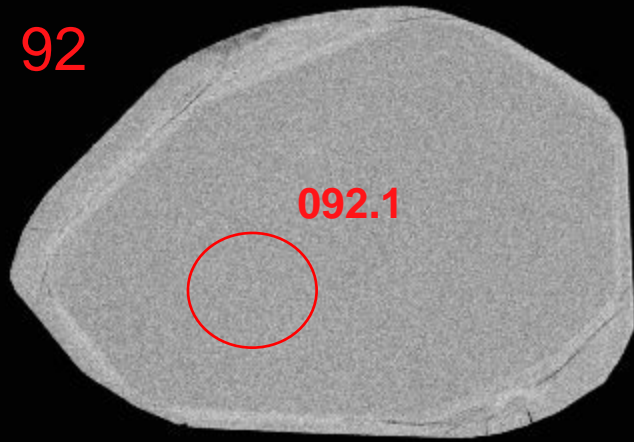
MIRA3 TESCAN

12519-22-cl

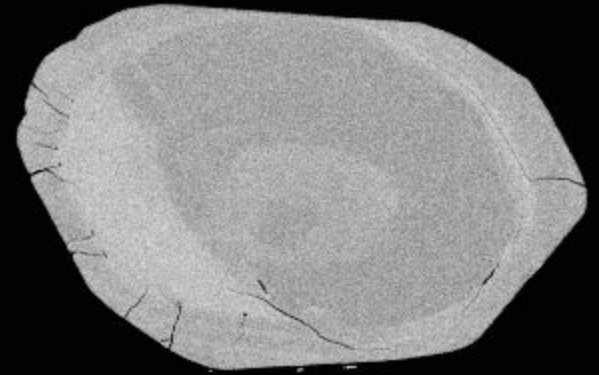
NRCan LMS GSC



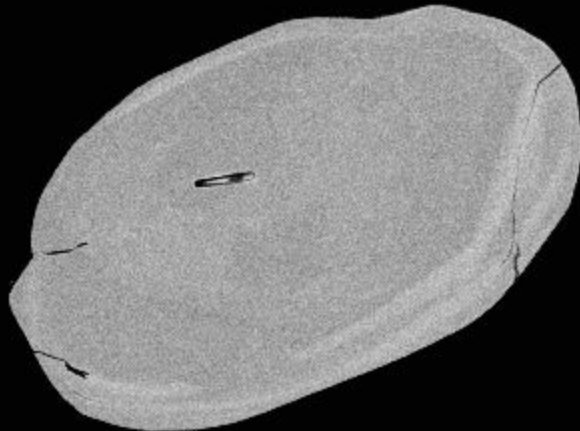
92



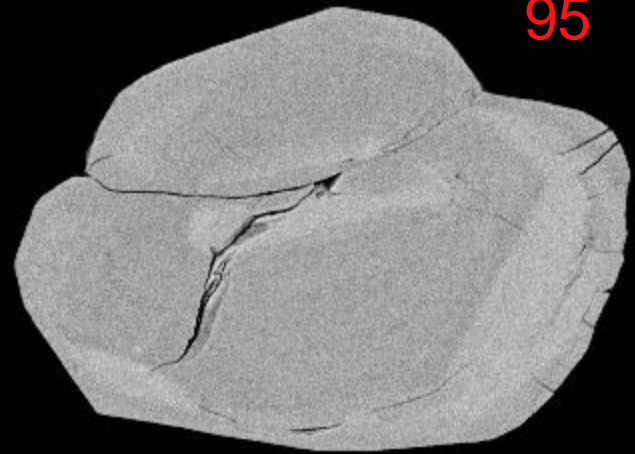
93



94

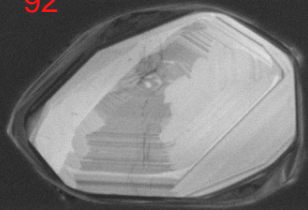


95

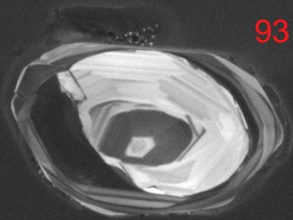


100µm

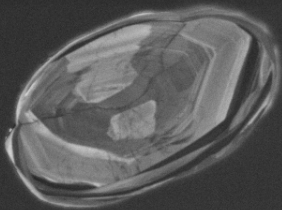
92



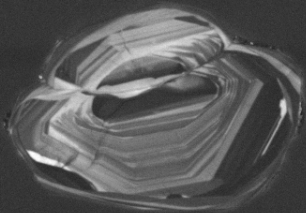
93



94



95



SEM HV: 10.0 kV

WD: 16.35 mm

SEM MAG: 955 x

Det: CL

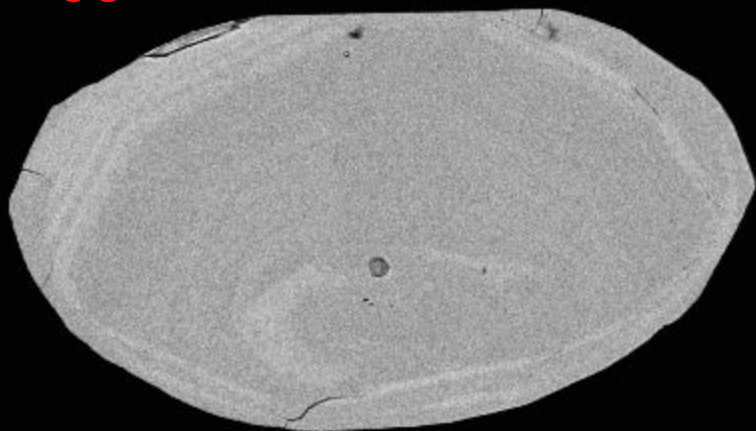
50  $\mu$ m

MIRA3 TESCAN

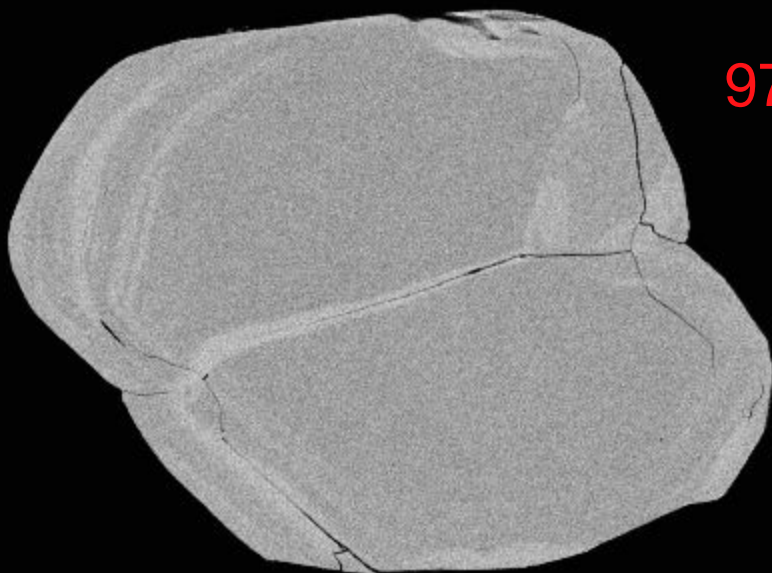
12519-23-cl

NRCan LMS GSC

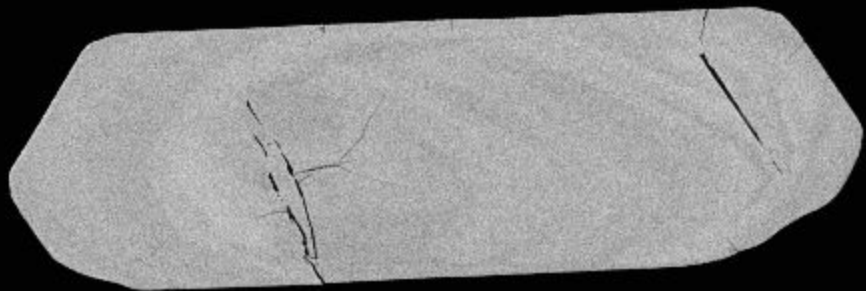
96



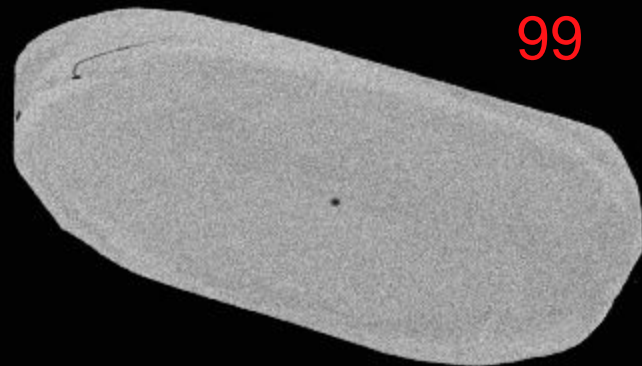
97



98

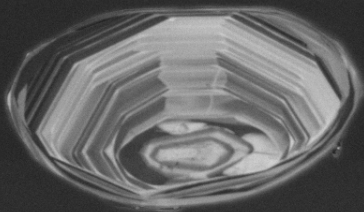


99

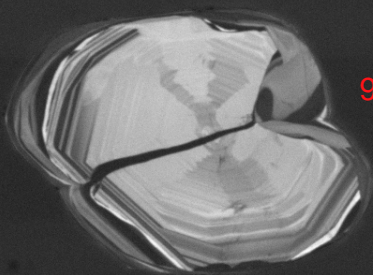


100µm

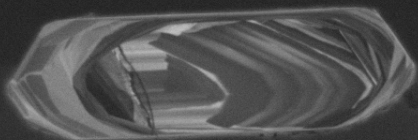
96



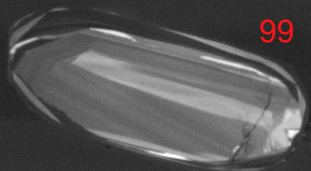
97



98



99



SEM HV: 10.0 kV

WD: 16.35 mm

SEM MAG: 1.08 kx

Det: CL



50  $\mu$ m

MIRA3 TESCAN

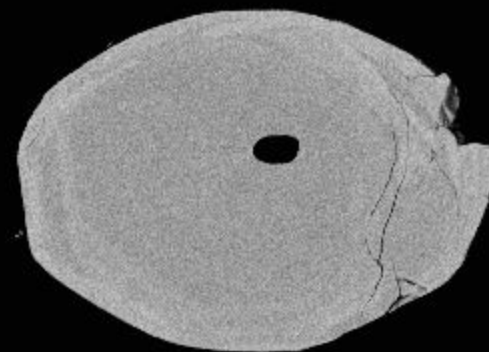
12519-24-cl

NRCan LMS GSC

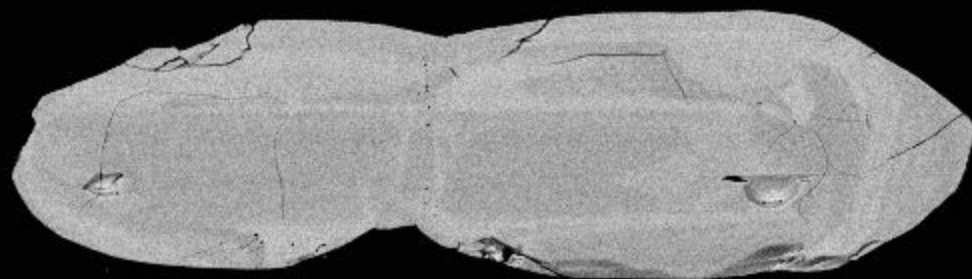




100

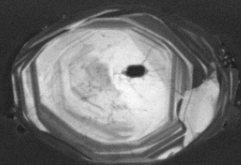


101

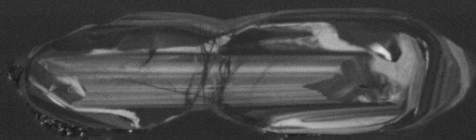


100µm

100



101



SEM HV: 10.0 kV

WD: 16.35 mm

SEM MAG: 933 x

Det: CL



50  $\mu$ m

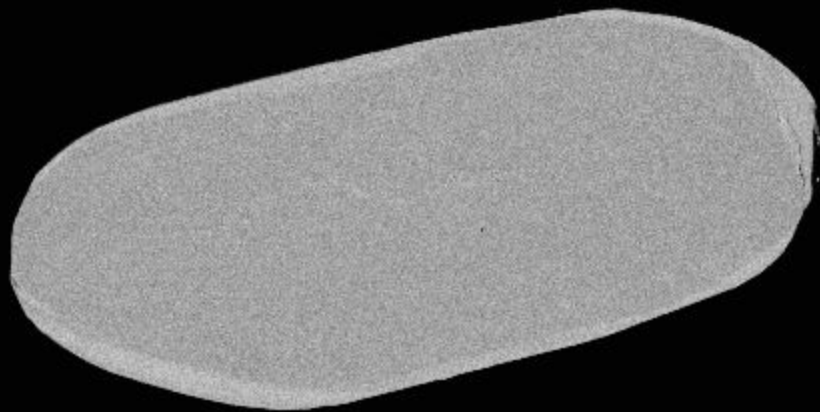
MIRA3 TESCAN

12519-25-cl

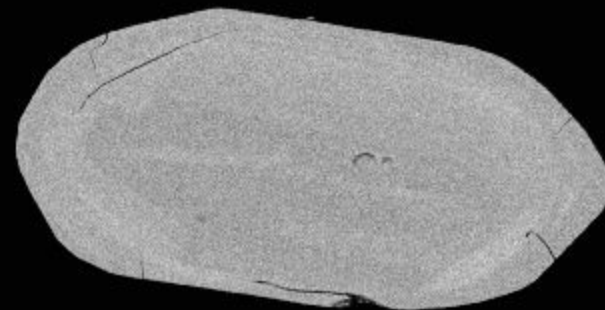
NRCan LMS GSC



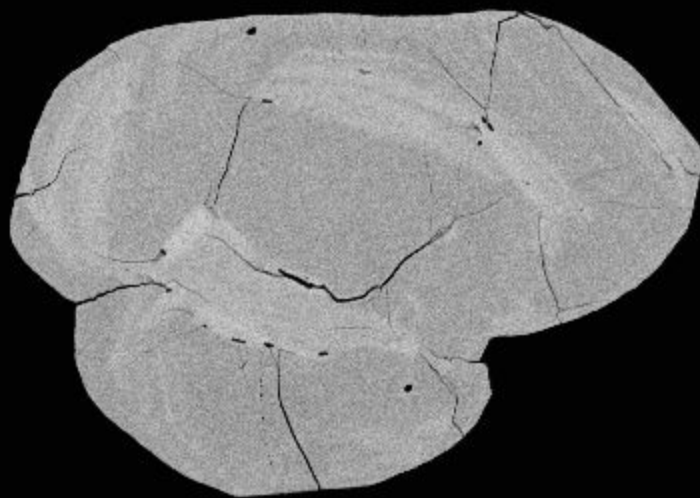
102



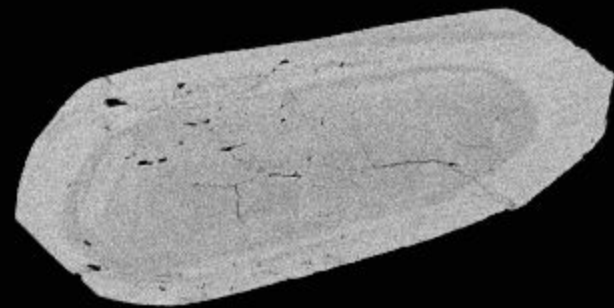
103



104

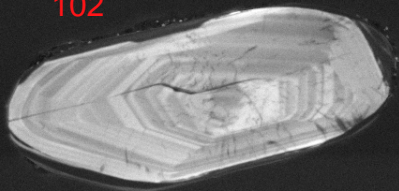


105

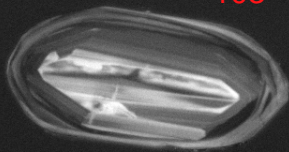


100µm

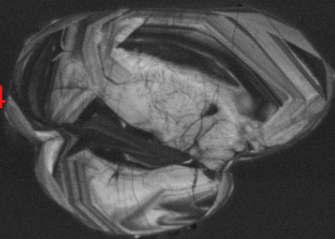
102



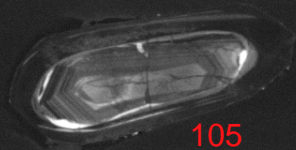
103



104



105



SEM HV: 10.0 kV

WD: 16.35 mm

SEM MAG: 1.00 kx

Det: CL



50  $\mu$ m

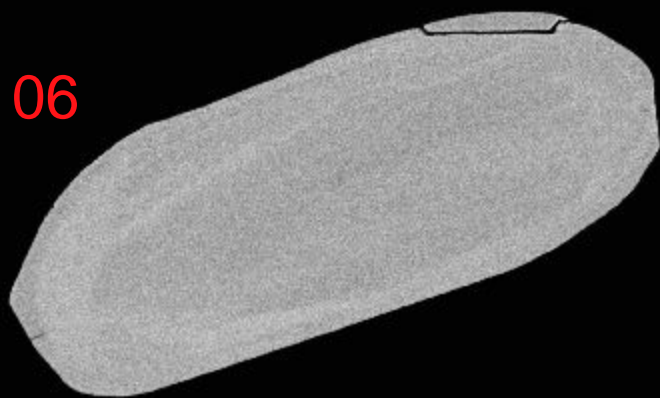
MIRA3 TESCAN

12519-26-cl

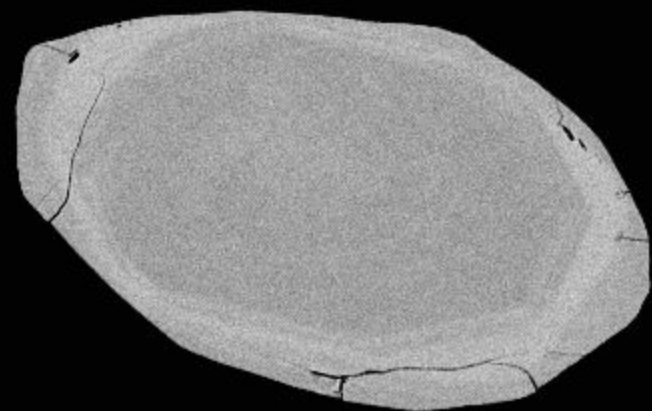
NRCan LMS GSC



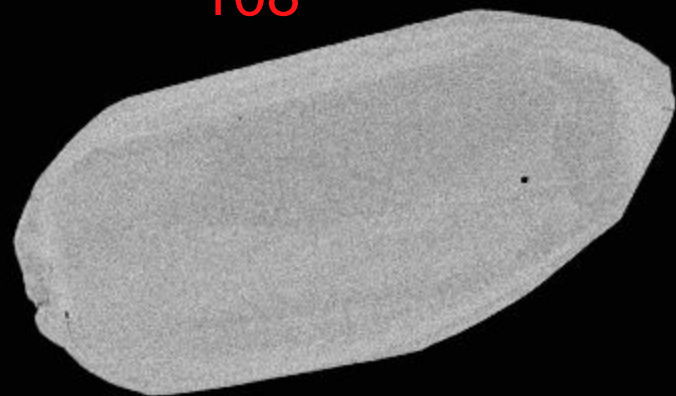
106

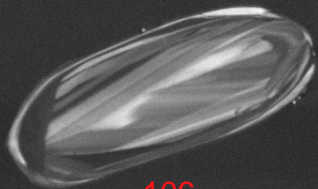


107

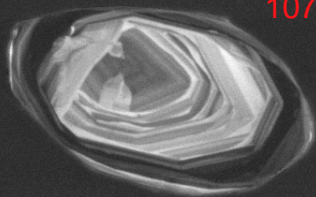


108





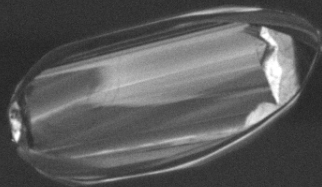
106



107



108



SEM HV: 10.0 kV

WD: 16.35 mm

SEM MAG: 1.12 kx

Det: CL



50  $\mu$ m

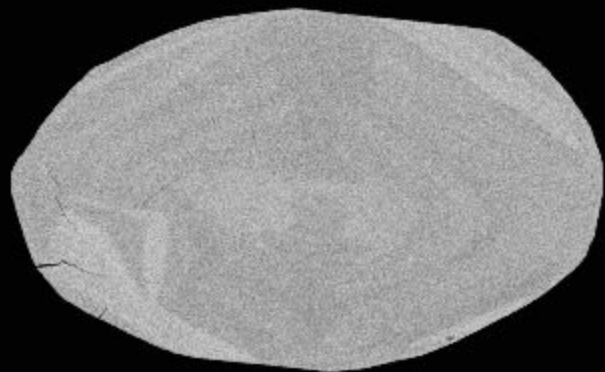
MIRA3 TESCAN

12519-27-cl

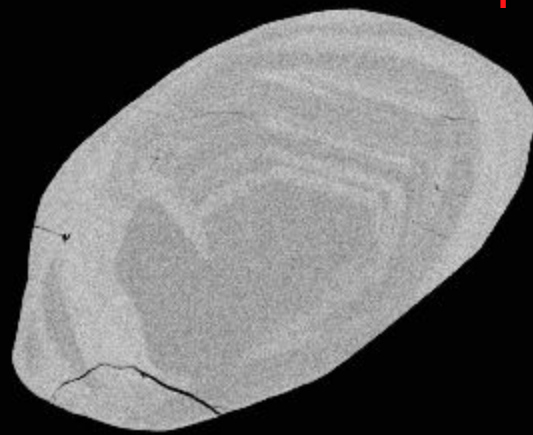
NRCan LMS GSC



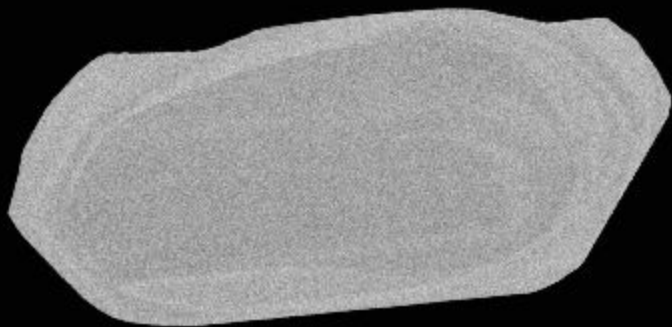
109



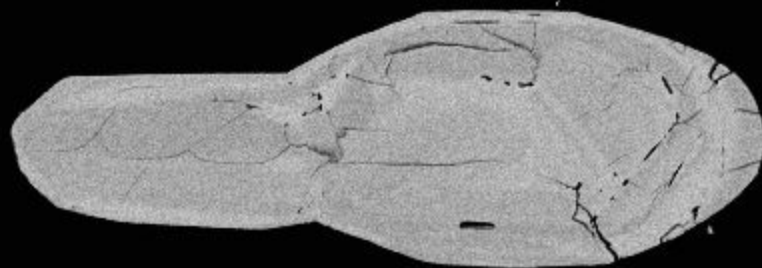
110



111

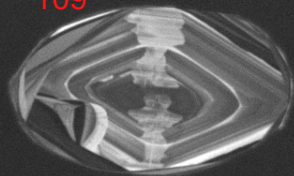


112

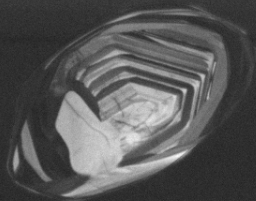


100µm

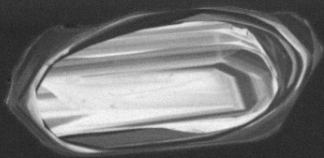
109



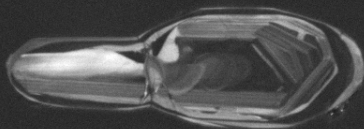
110



111



112



SEM HV: 10.0 kV

WD: 16.35 mm

SEM MAG: 968 x

Det: CL



50  $\mu$ m

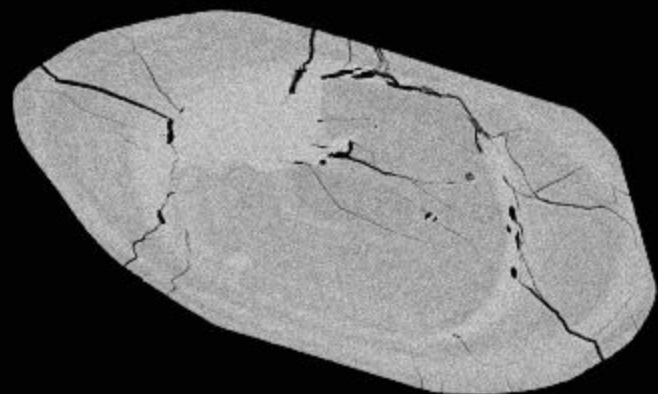
MIRA3 TESCAN

12519-28-cl

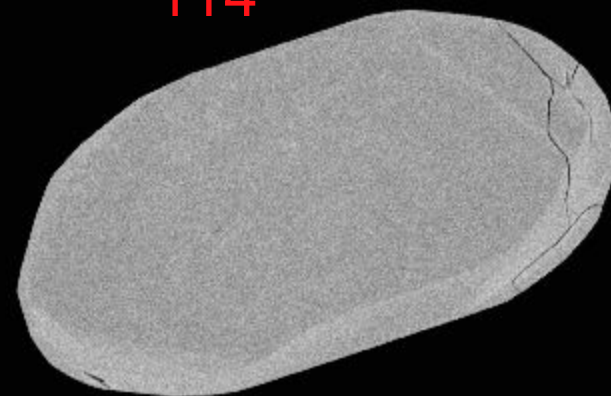
NRCan LMS GSC



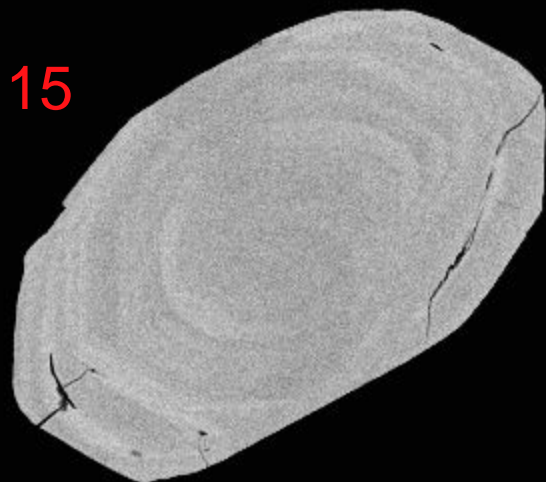
113



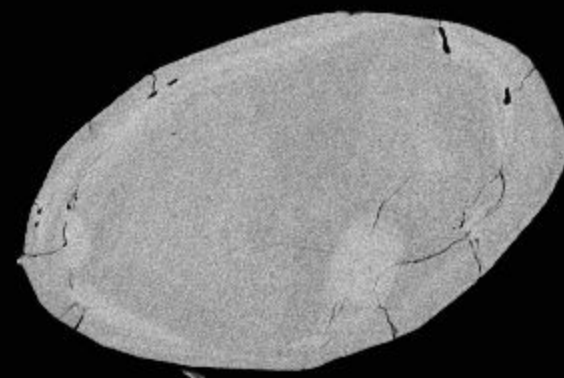
114



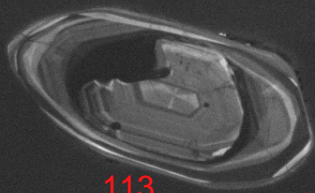
115



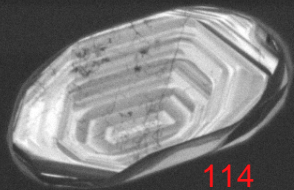
116



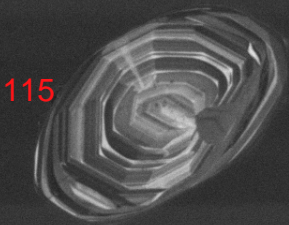
100µm



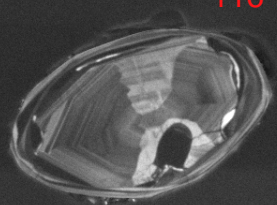
113



114



115



116

SEM HV: 10.0 kV

WD: 16.35 mm

SEM MAG: 1.02 kx

Det: CL



50  $\mu$ m

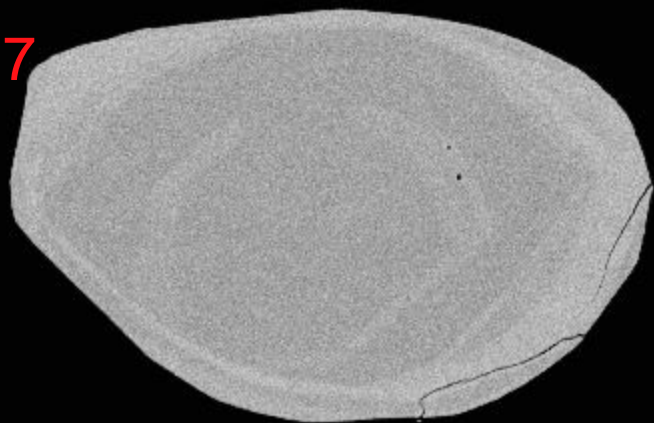
MIRA3 TESCAN

12519-29-cl

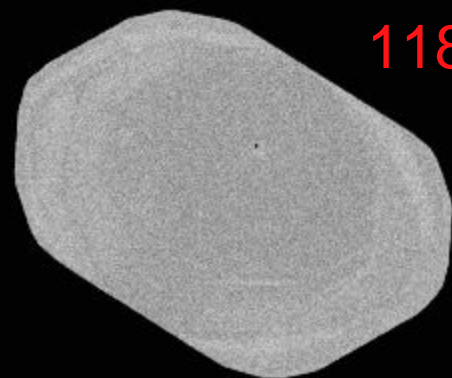
NRCan LMS GSC



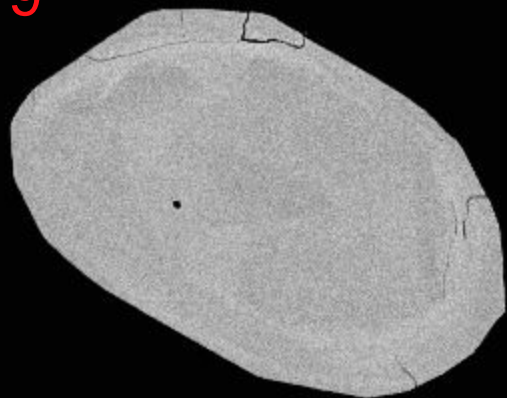
117



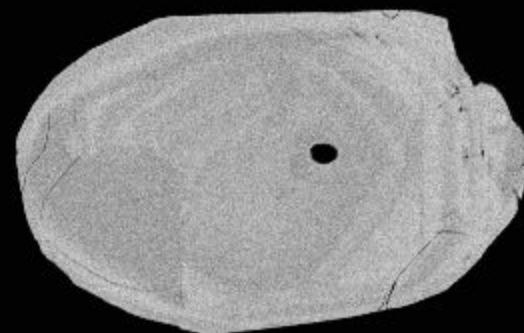
118



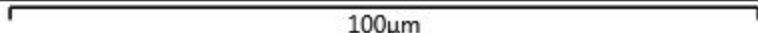
119



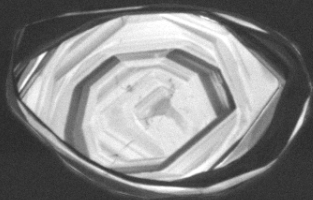
120



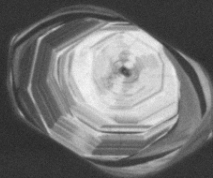
100µm



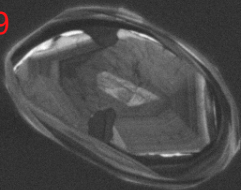
117



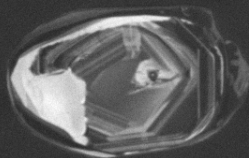
118



119



120



SEM HV: 10.0 kV

WD: 16.35 mm

SEM MAG: 1.01 kx

Det: CL



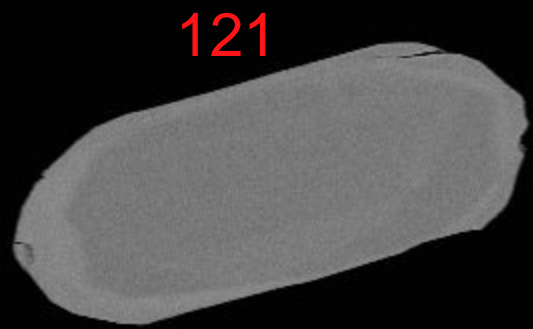
50  $\mu$ m

MIRA3 TESCAN

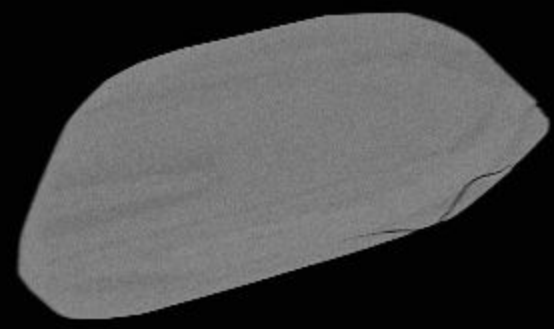
12519-30-cl

NRCan LMS GSC

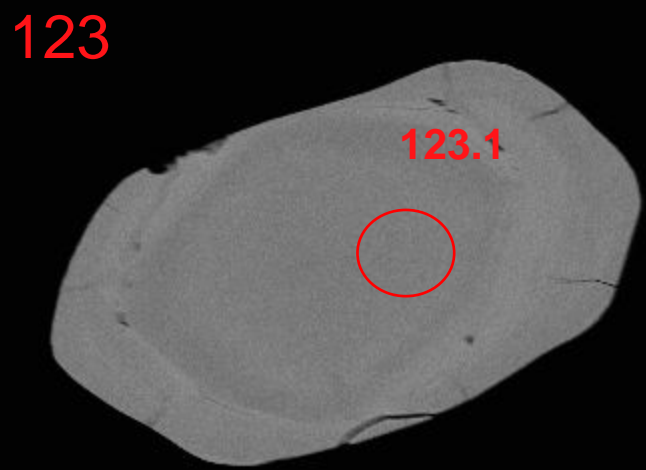




121

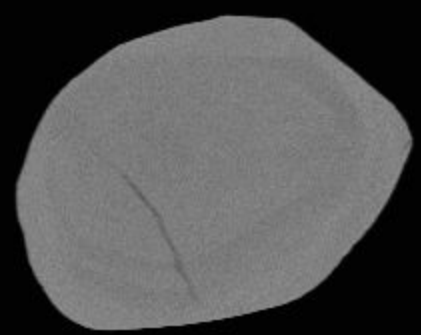


122



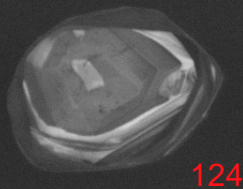
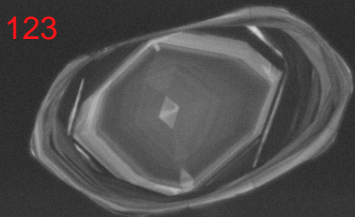
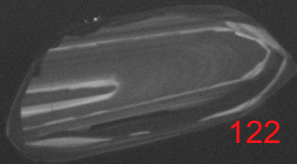
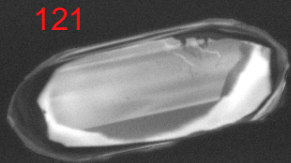
123

123.1



124

100μm



SEM HV: 10.0 kV

WD: 16.35 mm

SEM MAG: 1.05 kx

Det: CL



50  $\mu$ m

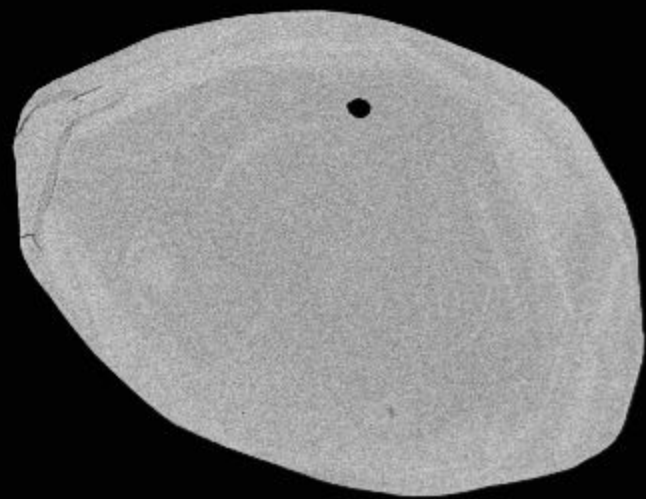
MIRA3 TESCAN

12519-31-cl

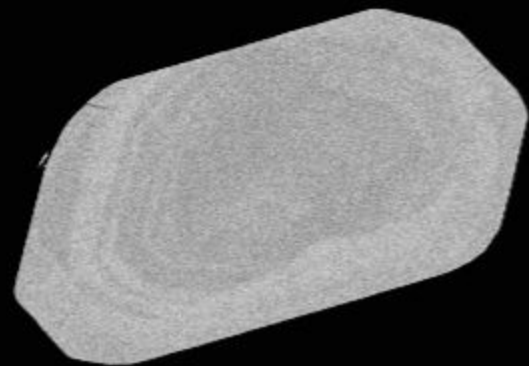
NRCan LMS GSC



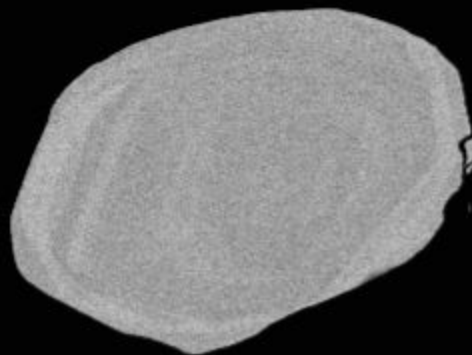
125



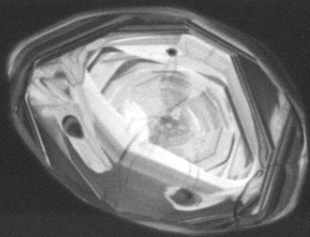
126



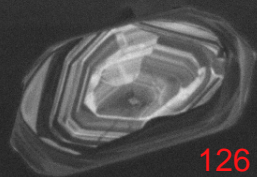
127



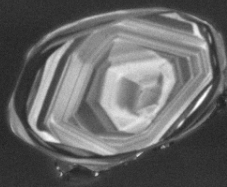
125



126



127



SEM HV: 10.0 kV

WD: 16.35 mm

SEM MAG: 1.10 kx

Det: CL

50  $\mu$ m

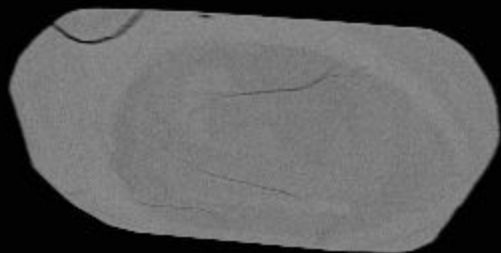
MIRA3 TESCAN

12519-32-cl

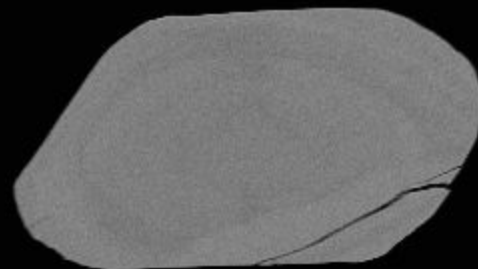
NRCan LMS GSC



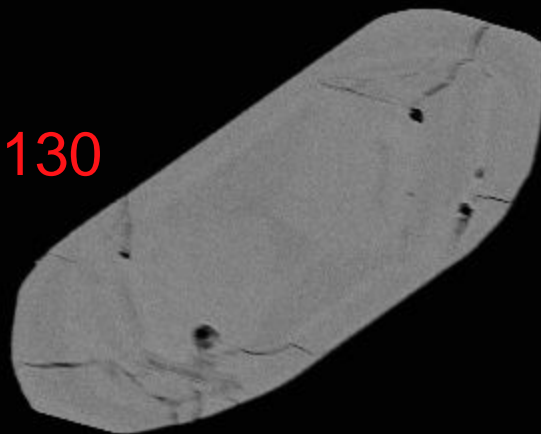
128



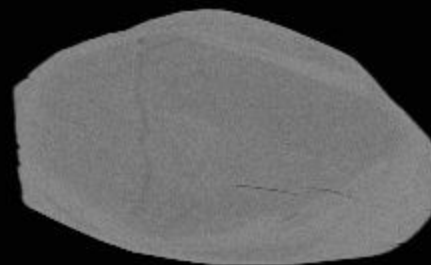
129



130



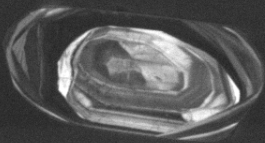
131



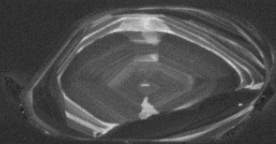
100µm



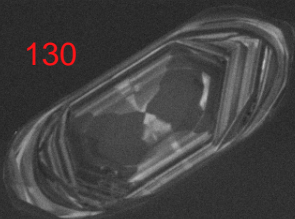
128



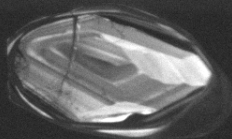
129



130



131



SEM HV: 10.0 kV

WD: 16.35 mm

SEM MAG: 997 x

Det: CL



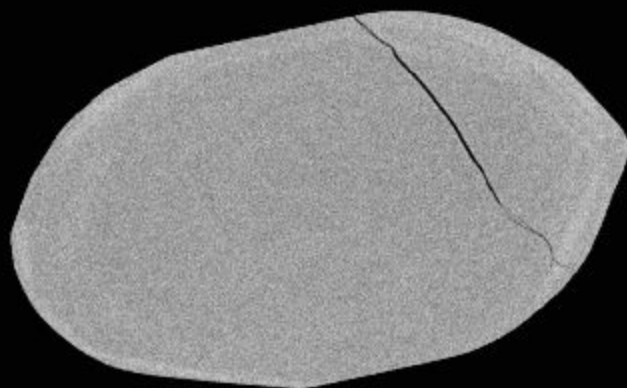
50  $\mu$ m

MIRA3 TESCAN

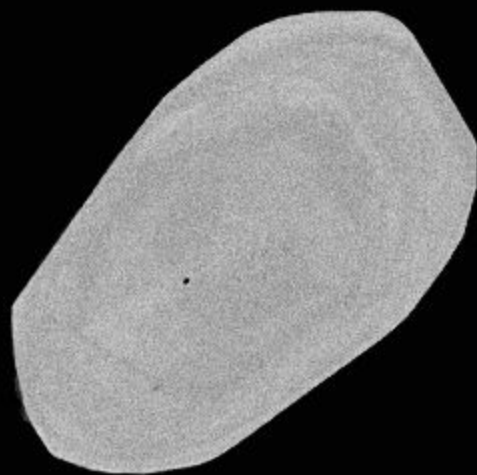
12519-33-cl

NRCan LMS GSC

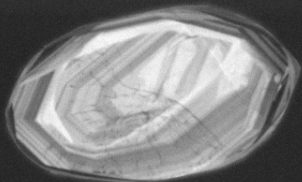




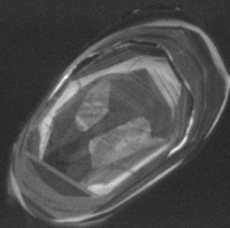
132



133



132



133

SEM HV: 10.0 kV

WD: 16.35 mm

SEM MAG: 1.17 kx

Det: CL



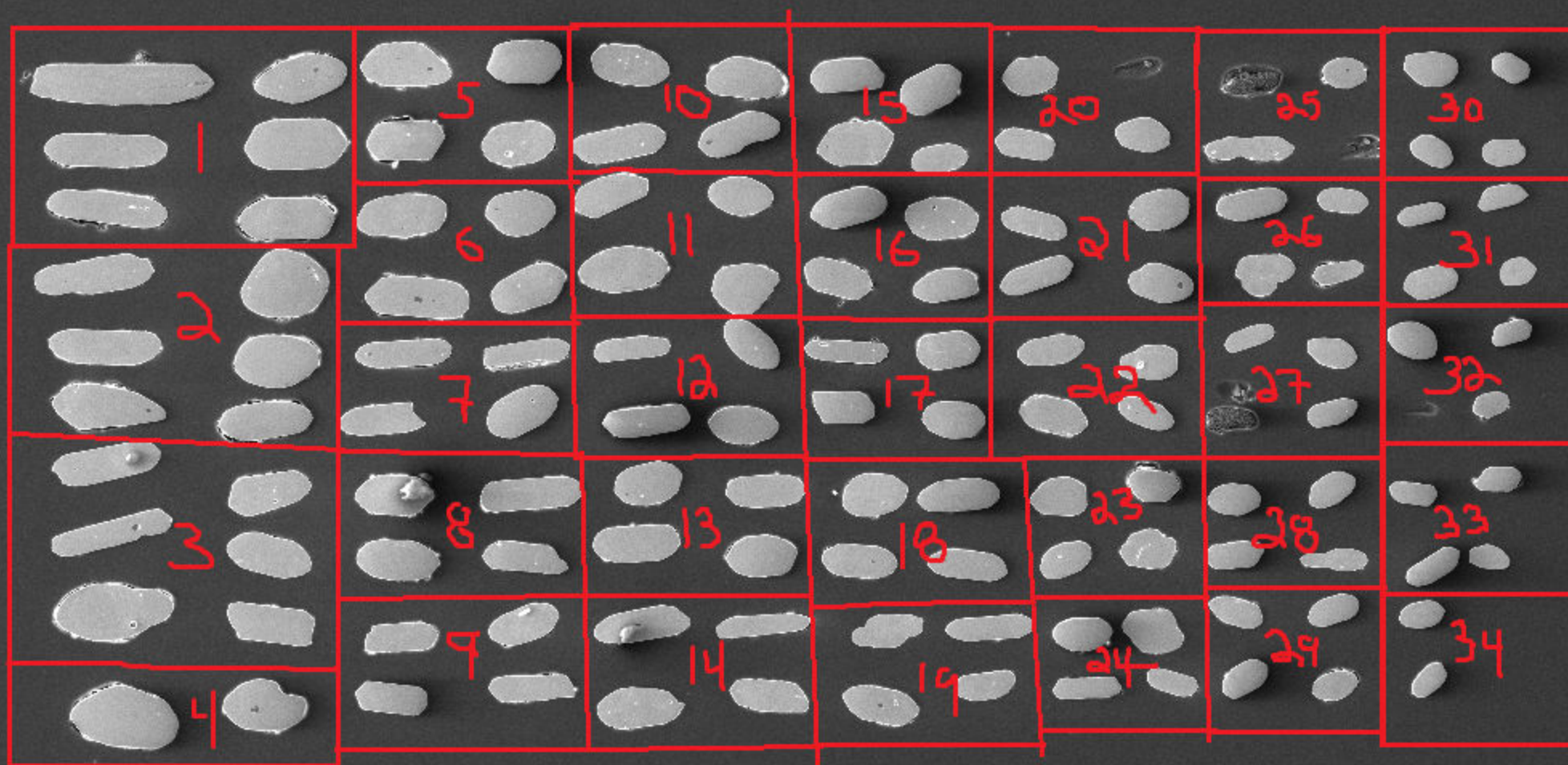
50  $\mu$ m

MIRA3 TESCAN

12519-34-cl

NRCan LMS GSC





SEM HV: 20.0 kV

WD: 49.48 mm

SEM MAG: 107 x

Det: SE



500  $\mu$ m

12519-map

MIRA3 TESCAN

NRCan LMS GSC

