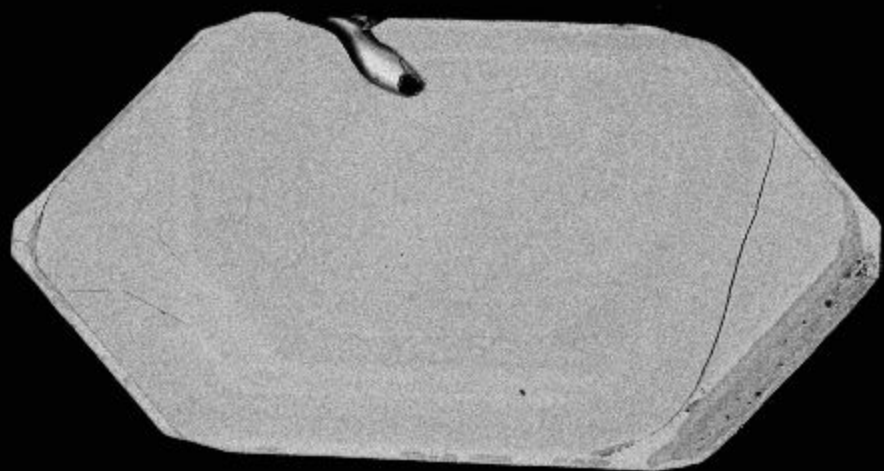
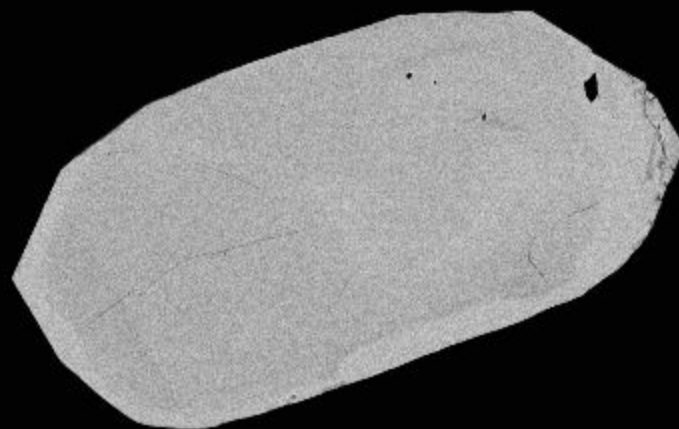


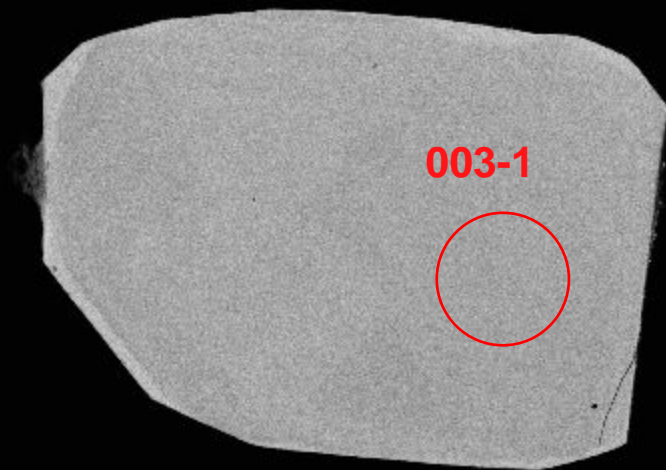
1



2

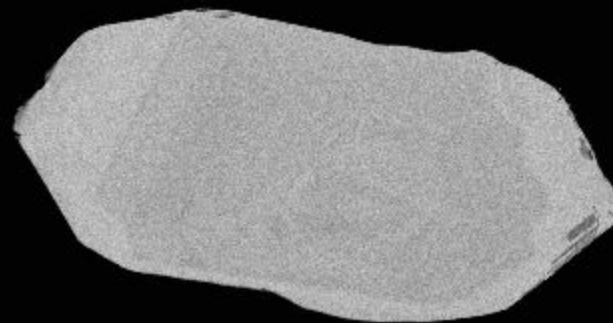


3

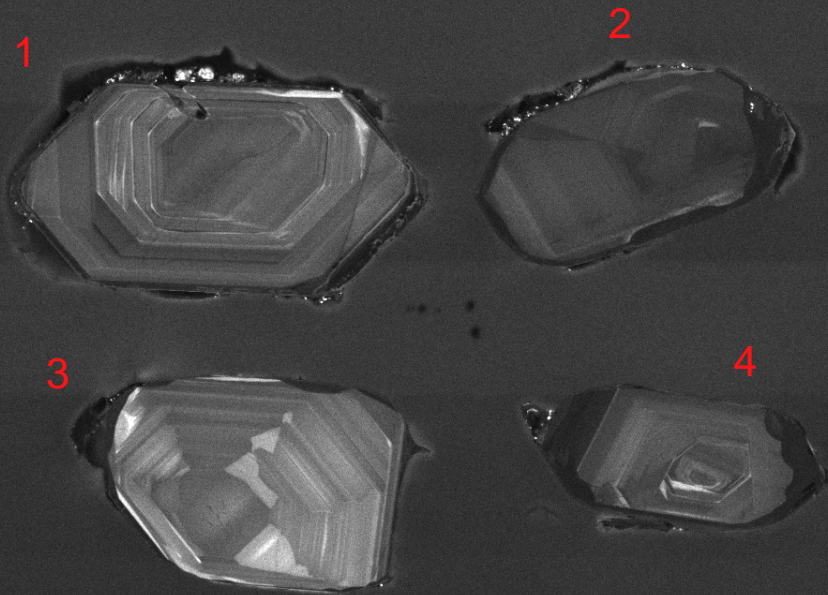


003-1

4



100μm



SEM HV: 10.0 kV

WD: 16.37 mm

SEM MAG: 746 x

Det: CL



100  $\mu$ m

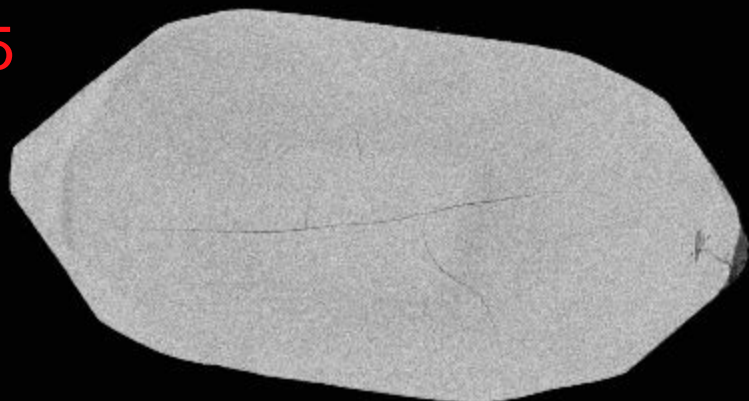
MIRA3 TESCAN

12520-01-cl

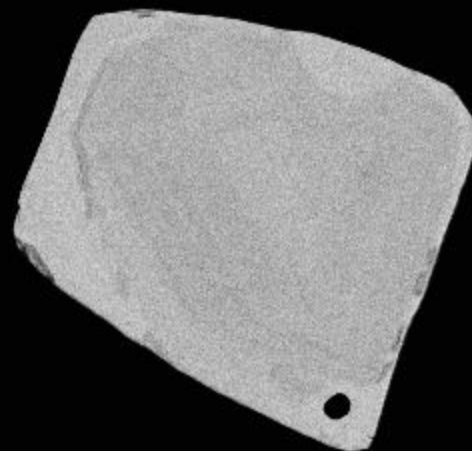
NRCan LMS GSC



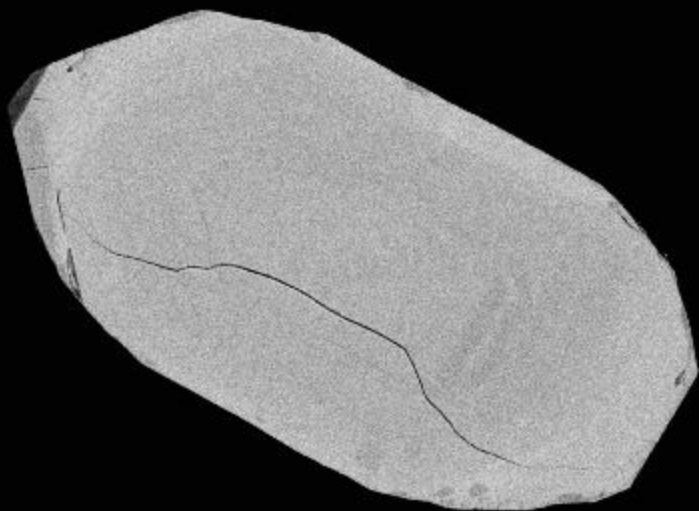
5



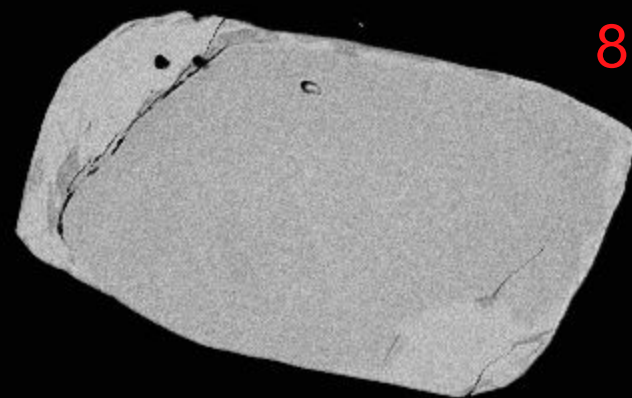
6



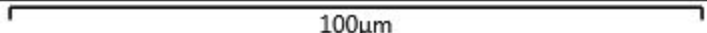
7



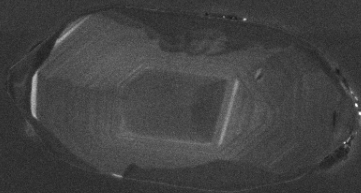
8



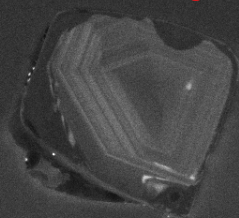
100µm



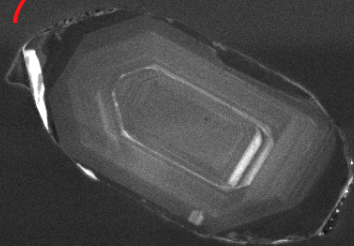
5



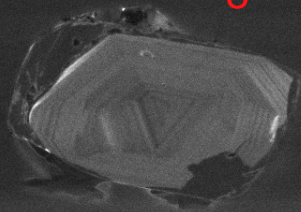
6



7



8



SEM HV: 10.0 kV

WD: 16.37 mm

SEM MAG: 933 x

Det: CL



50  $\mu$ m

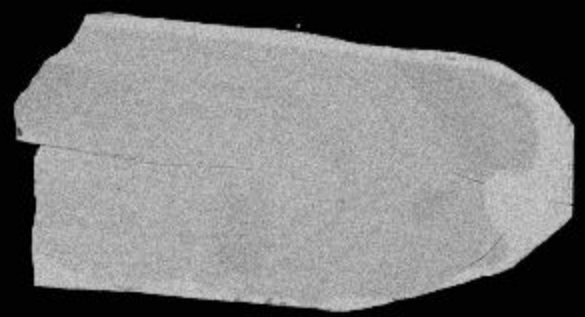
MIRA3 TESCAN

12520-02-cl

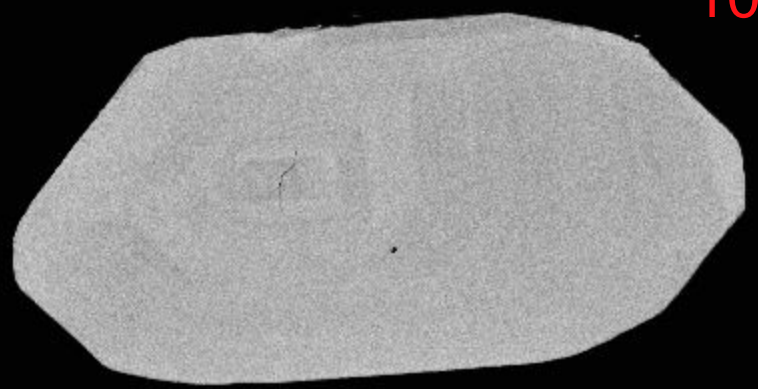
NRCan LMS GSC



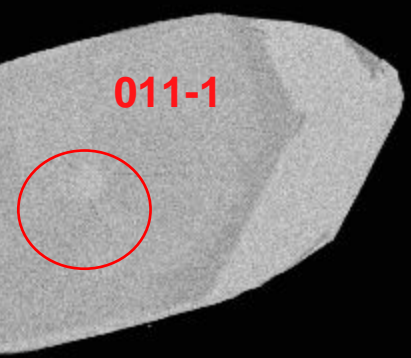
9



10

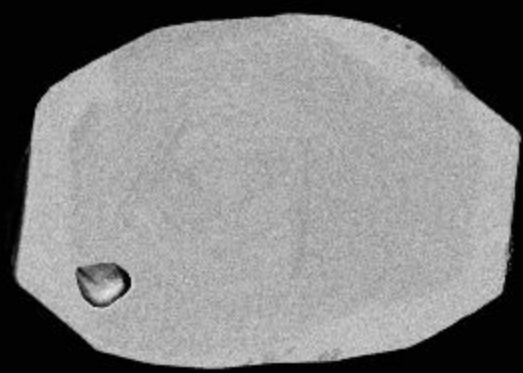


11

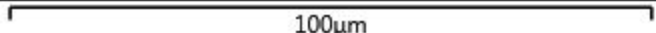


011-1

12



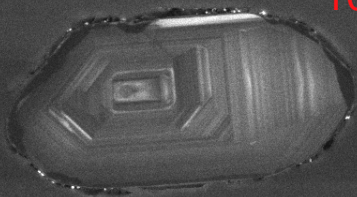
100μm



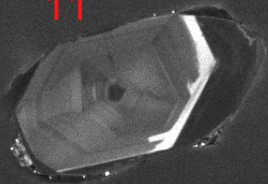
9



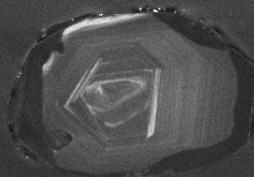
10



11



12



SEM HV: 10.0 kV

WD: 16.37 mm

SEM MAG: 865 x

Det: CL

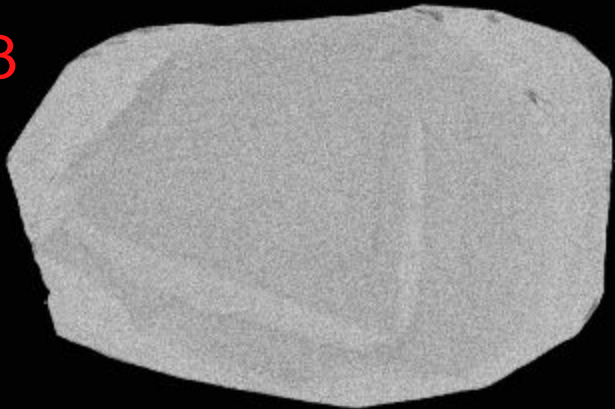
100 µm

MIRA3 TESCAN

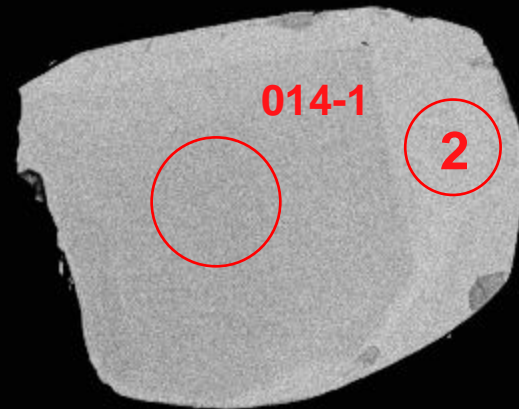
12520-03-cl

NRCan LMS GSC

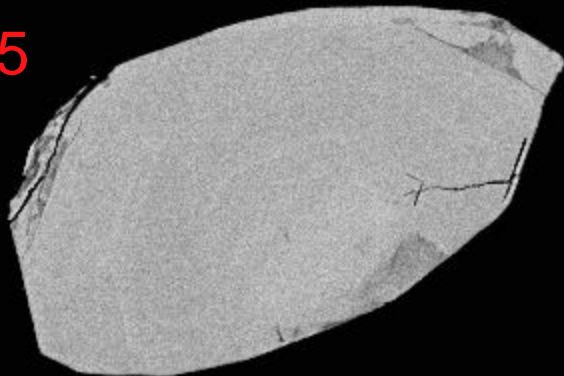
13



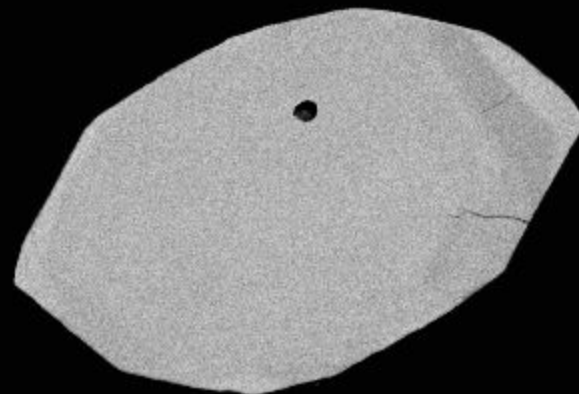
14



15

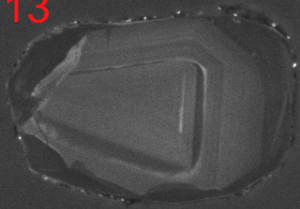


16

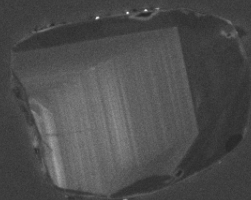


100µm

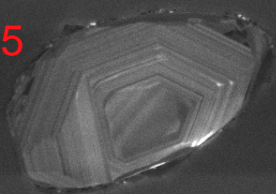
13



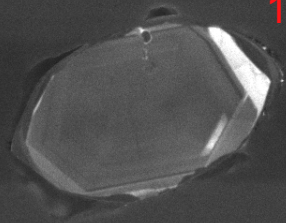
14



15



16



SEM HV: 10.0 kV

WD: 16.37 mm

SEM MAG: 1.03 kx

Det: CL



50  $\mu$ m

MIRA3 TESCAN

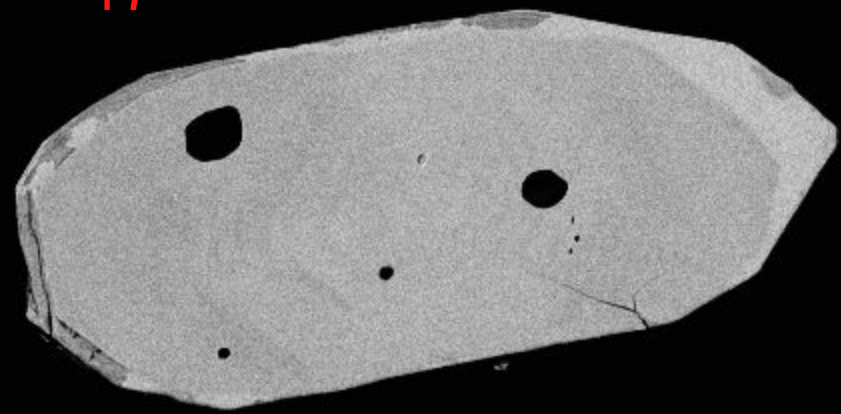
12520-04-cl

NRCan LMS GSC

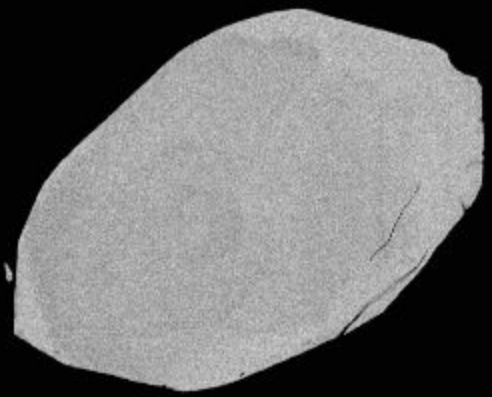




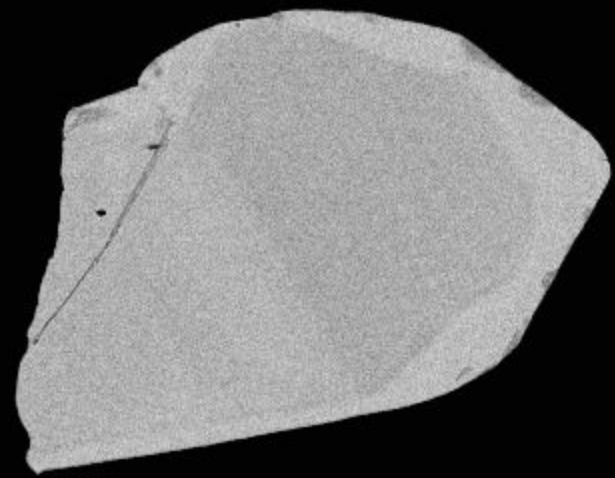
17



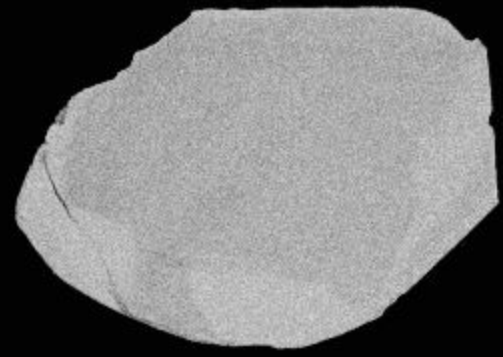
18



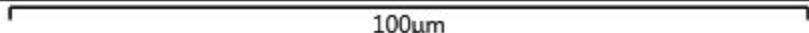
19



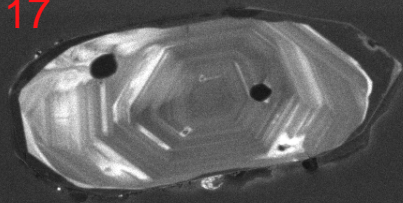
20



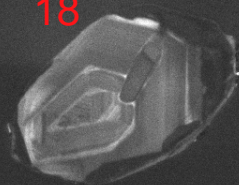
100µm



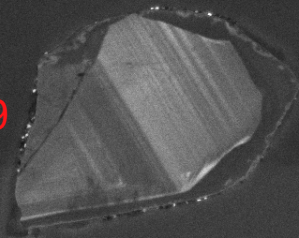
17



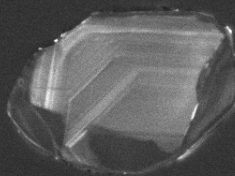
18



19



20



SEM HV: 10.0 kV

WD: 16.37 mm

SEM MAG: 1.08 kx

Det: CL



50  $\mu$ m

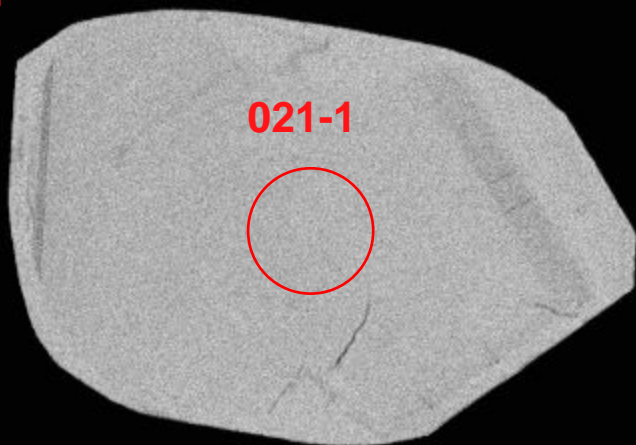
MIRA3 TESCAN

12520-05-cl

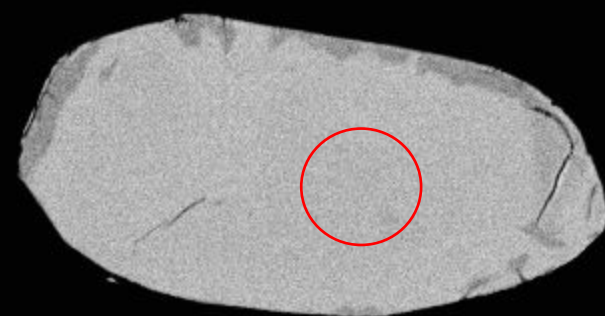
NRCan LMS GSC



21



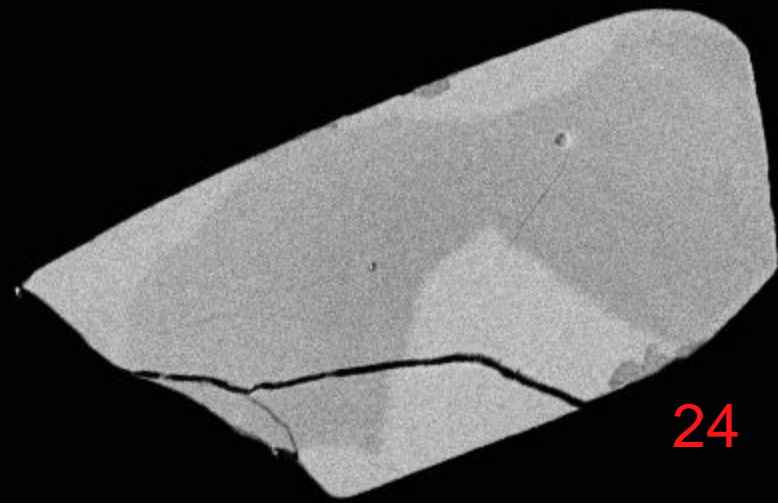
22



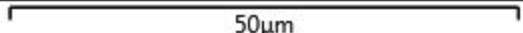
23



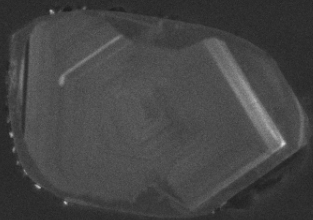
24



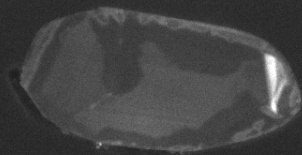
50µm



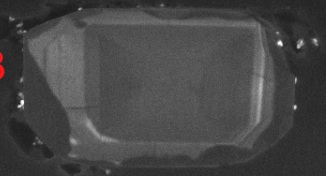
21



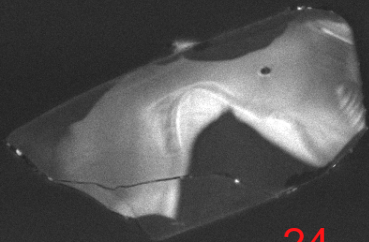
22



23



24



SEM HV: 10.0 kV

WD: 16.37 mm

SEM MAG: 1.37 kx

Det: CL



50  $\mu$ m

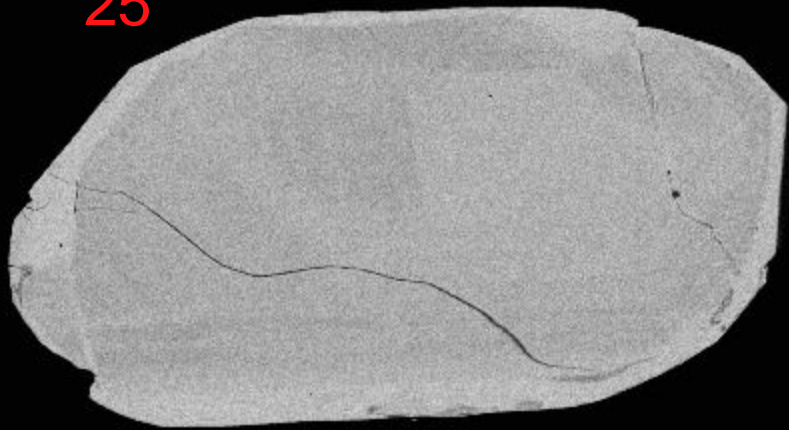
MIRA3 TESCAN

12520-06-cl

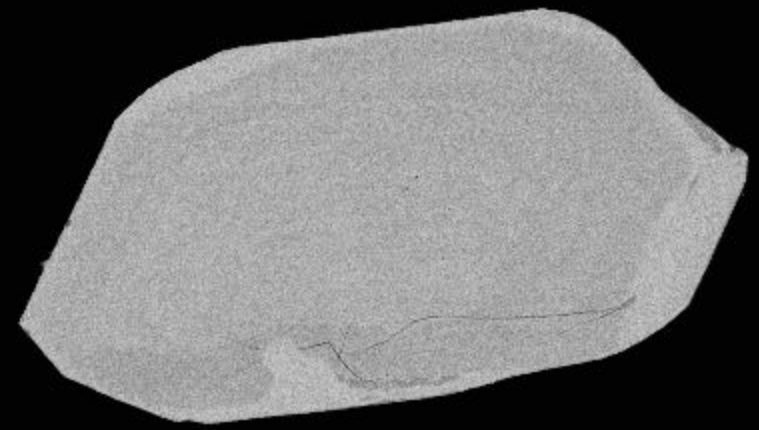
NRCan LMS GSC



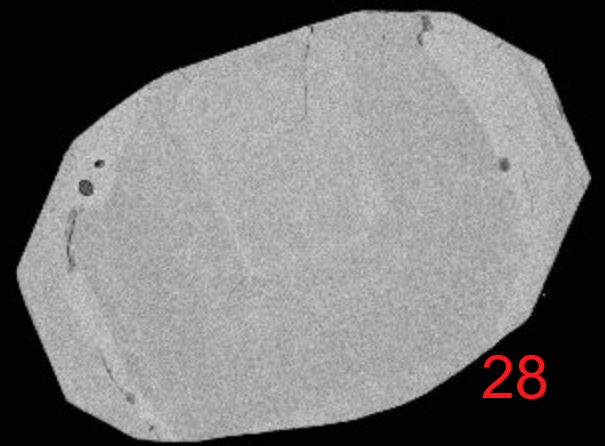
25



26

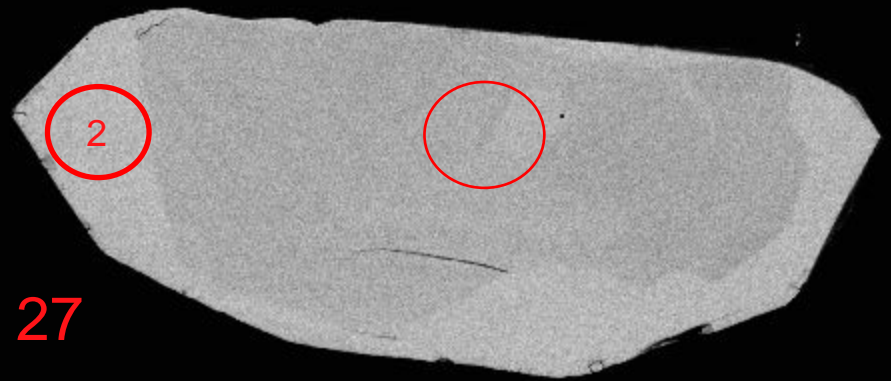


28

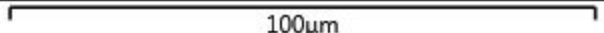


2

27



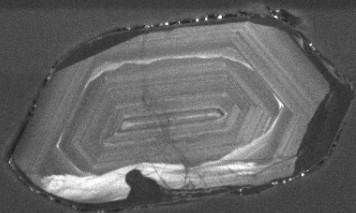
100µm



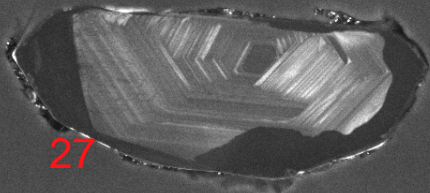
25



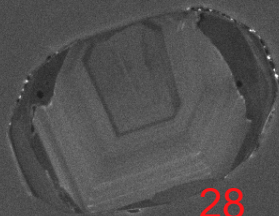
26



27



28



SEM HV: 10.0 kV

WD: 16.37 mm

SEM MAG: 789 x

Det: CL

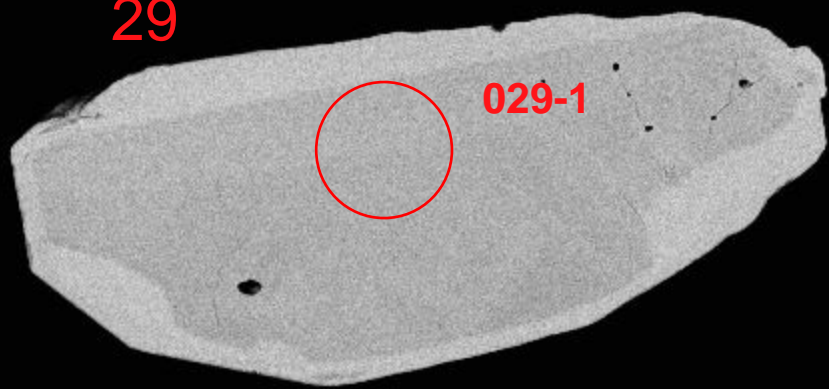
100  $\mu$ m

MIRA3 TESCAN

12520-07-cl

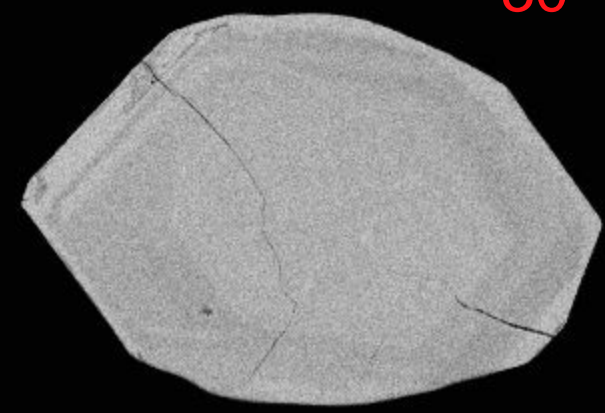
NRCan LMS GSC

29

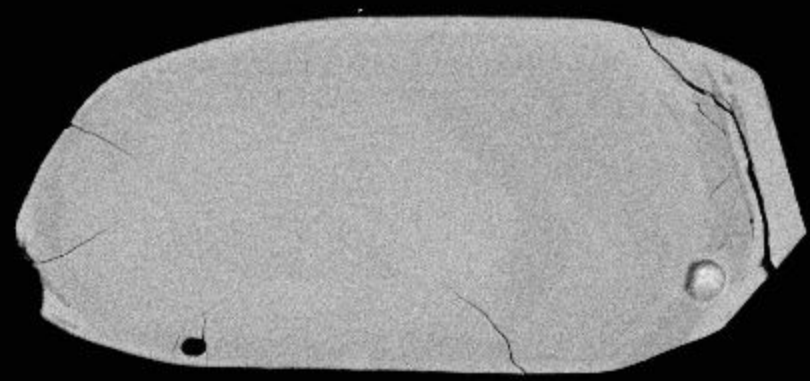


029-1

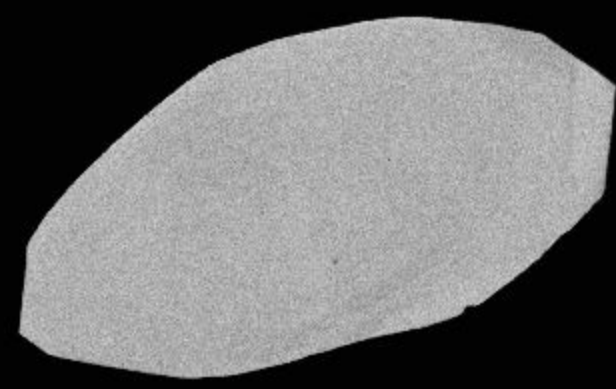
30



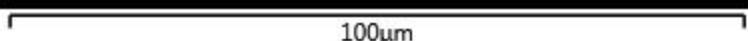
31



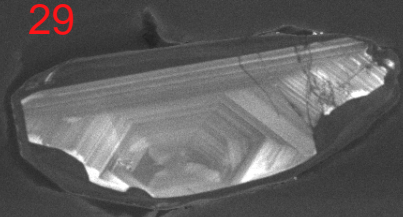
32



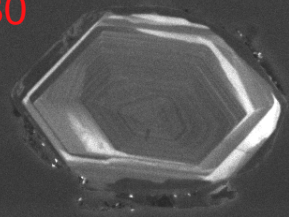
100µm



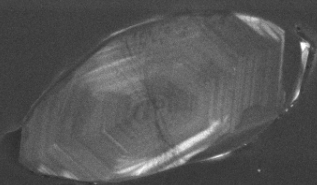
29



30



32



31



SEM HV: 10.0 kV

WD: 16.37 mm

SEM MAG: 990 x

Det: CL



50  $\mu$ m

MIRA3 TESCAN

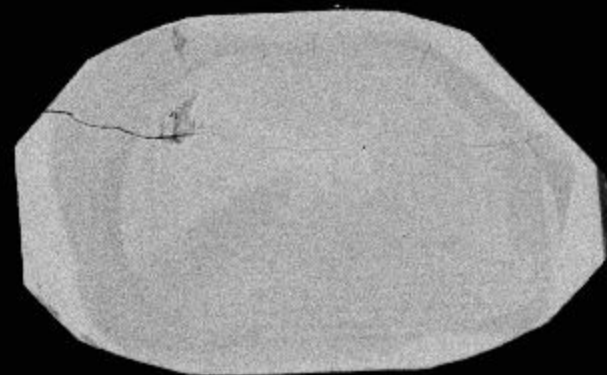
12520-08-cl

NRCan LMS GSC

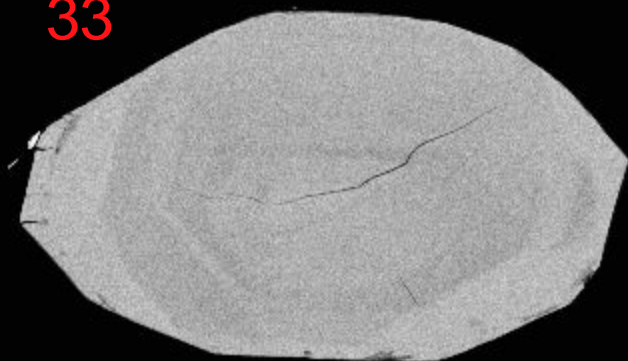




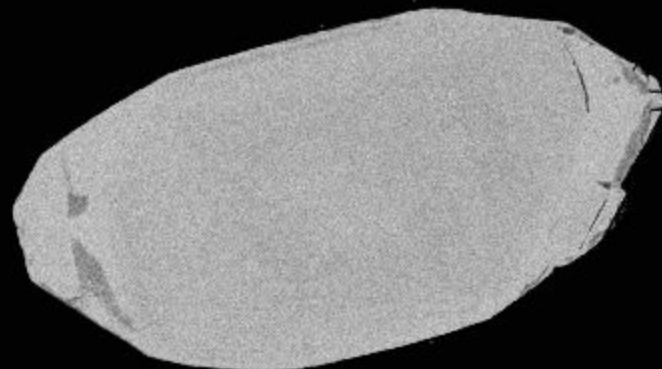
34



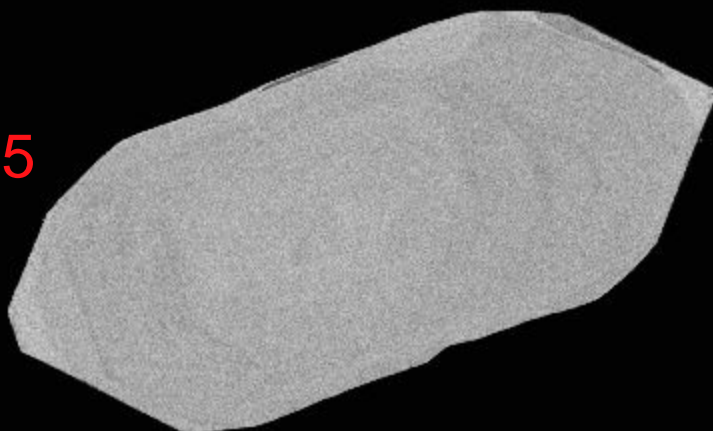
33



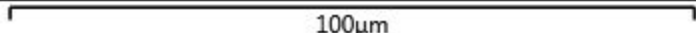
36

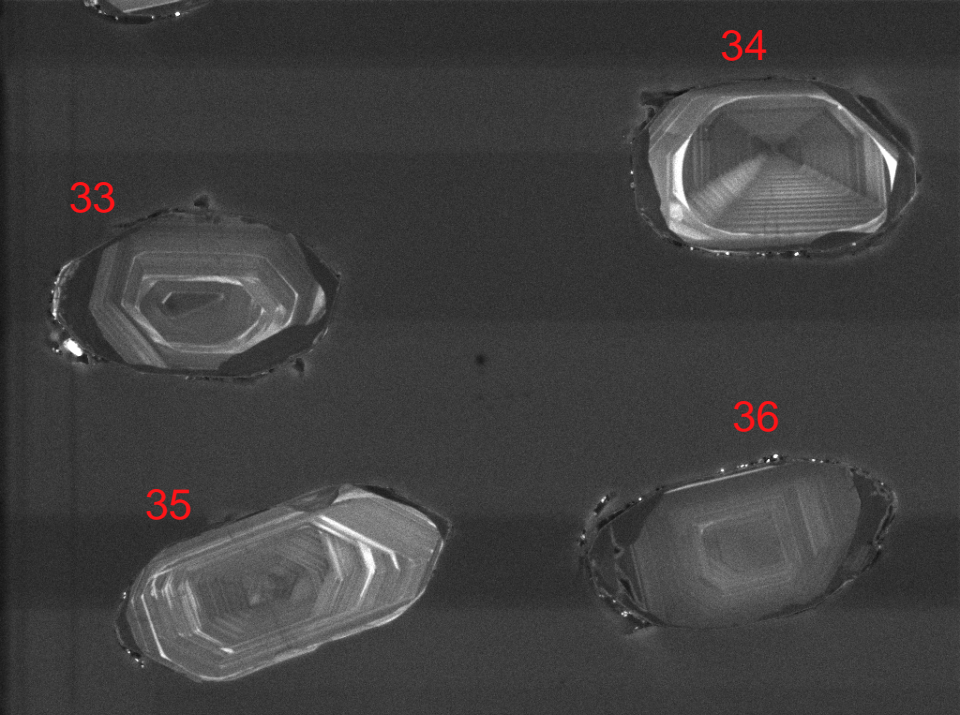


35



100µm





SEM HV: 10.0 kV

WD: 16.37 mm

SEM MAG: 923 x

Det: CL



50  $\mu$ m

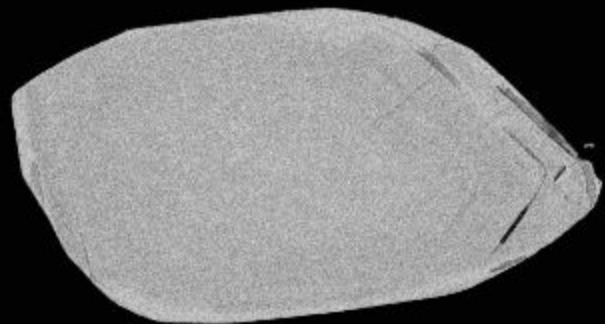
MIRA3 TESCAN

12520-09-cl

NRCan LMS GSC



37



38

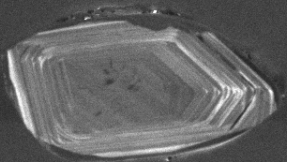


39

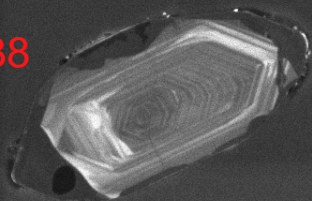


100µm

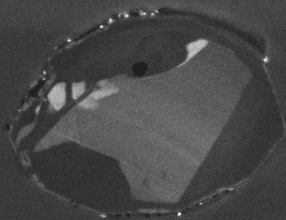
37



38



39



SEM HV: 10.0 kV

WD: 16.37 mm

SEM MAG: 1.04 kx

Det: CL



50 µm

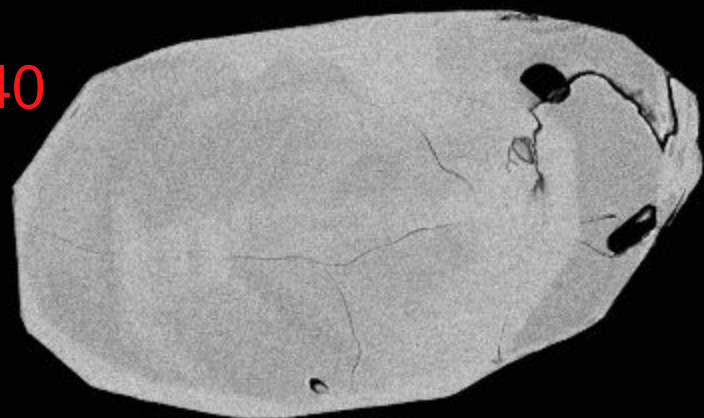
MIRA3 TESCAN

12520-10-cl

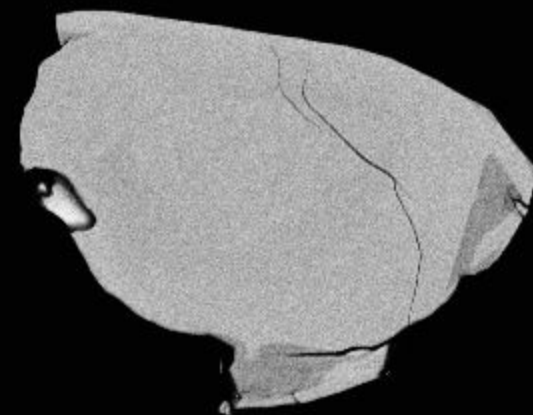
NRCan LMS GSC



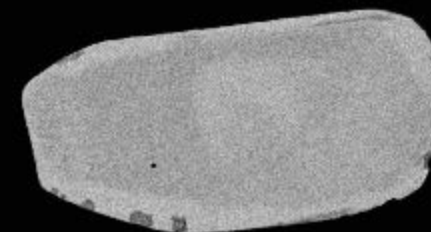
40



41

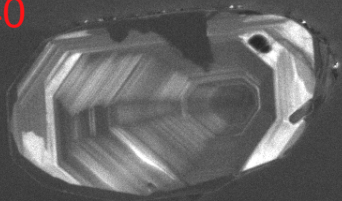


42



100µm

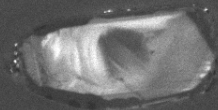
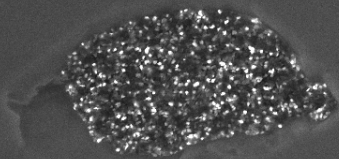
40



41



42



SEM HV: 10.0 kV

WD: 16.37 mm

SEM MAG: 1.04 kx

Det: CL



50  $\mu$ m

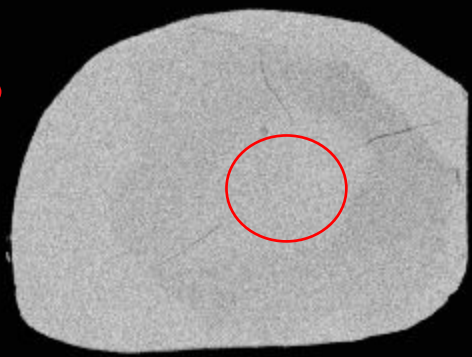
MIRA3 TESCAN

12520-11-cl

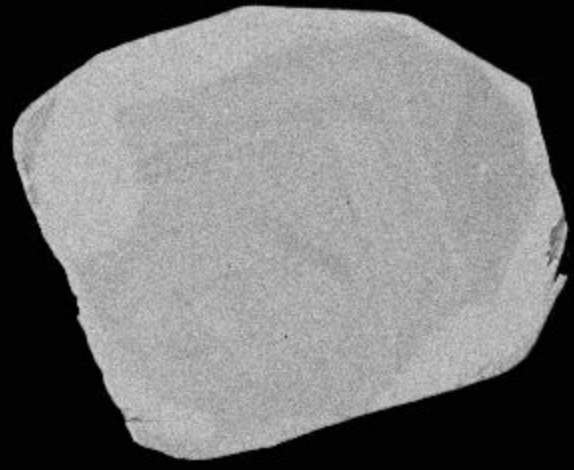
NRCan LMS GSC



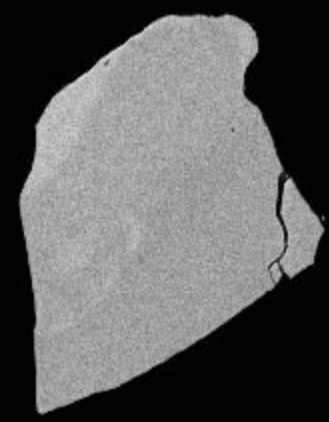
43



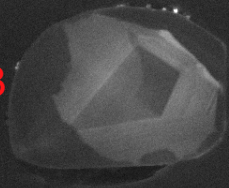
44



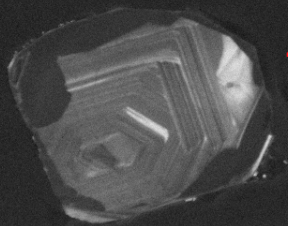
45



43



44



45



SEM HV: 10.0 kV

WD: 16.37 mm

SEM MAG: 1.16 kx

Det: CL



50  $\mu$ m

MIRA3 TESCAN

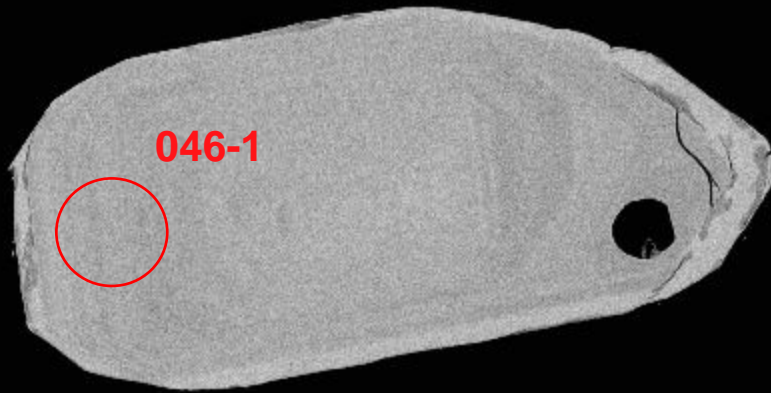
12520-12-cl

NRCan LMS GSC

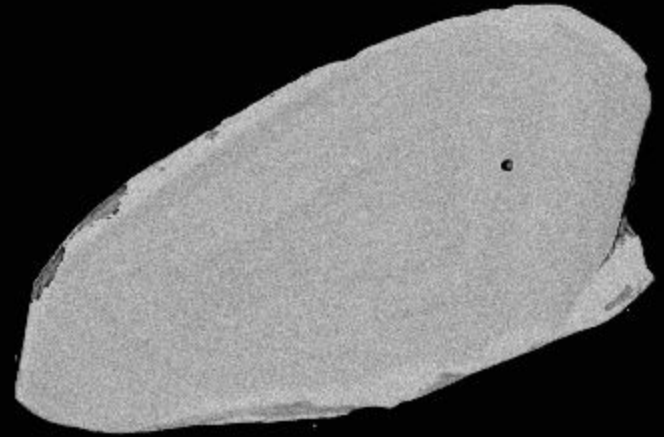




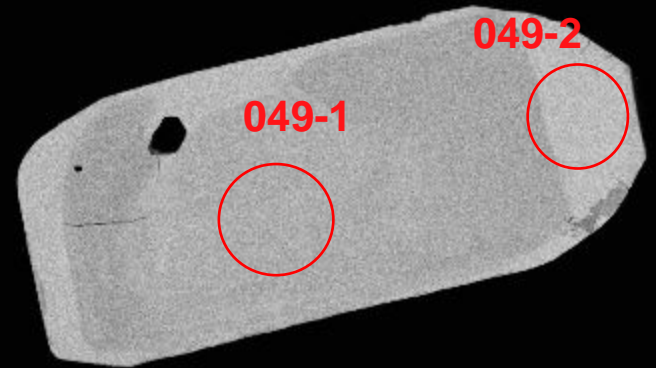
46



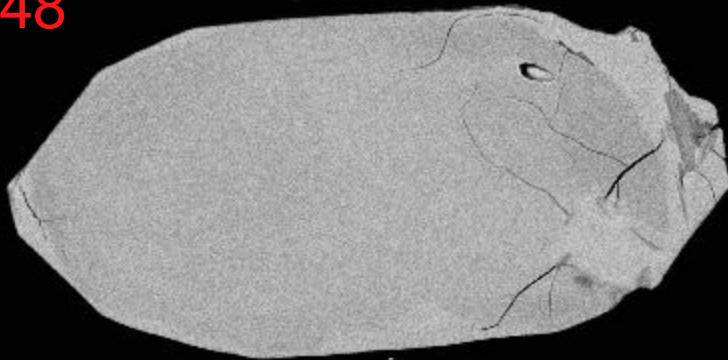
47



49

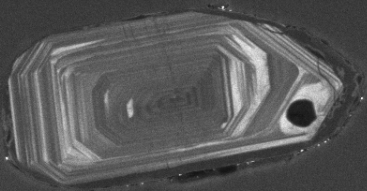


48

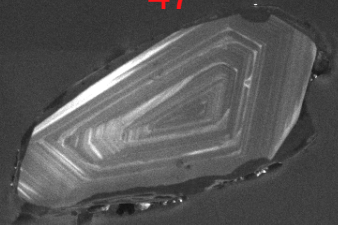


100µm

46



47



48



49



SEM HV: 10.0 kV

WD: 16.37 mm

SEM MAG: 800 x

Det: CL



100  $\mu$ m

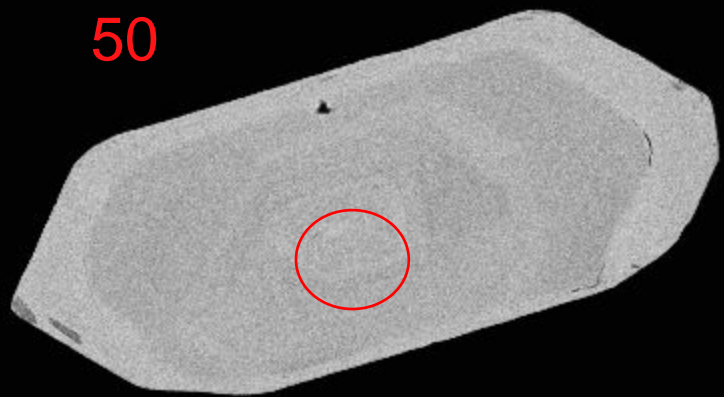
MIRA3 TESCAN

12520-13-cl

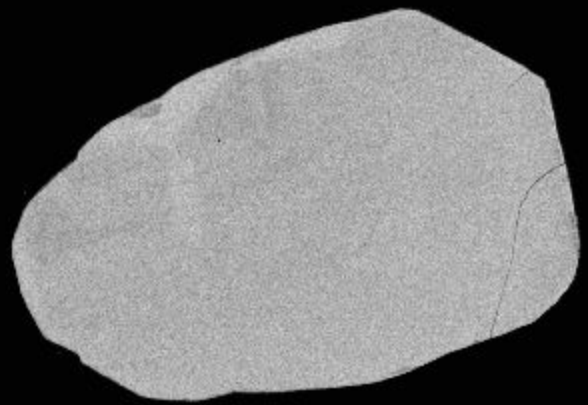
NRCan LMS GSC



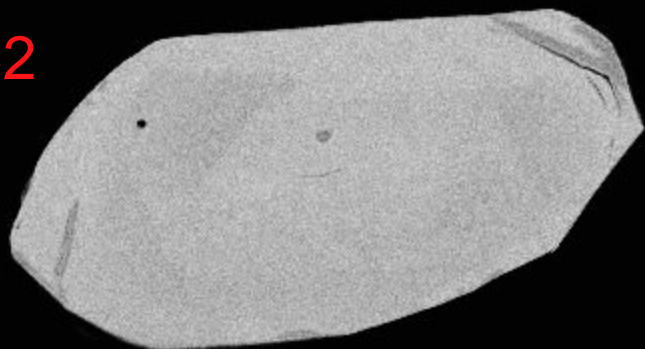
50



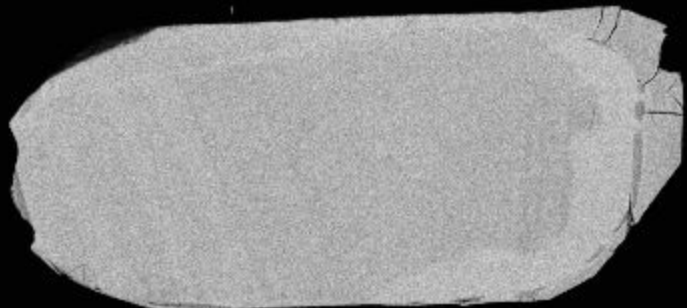
51



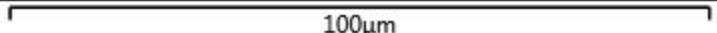
52



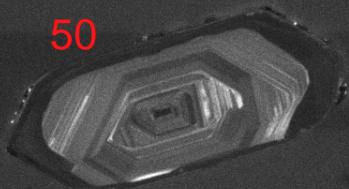
53



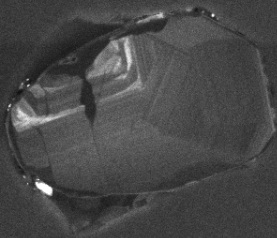
100µm



50



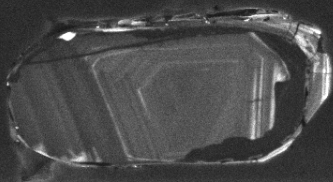
51



52



53



SEM HV: 10.0 kV

WD: 16.37 mm

SEM MAG: 943 x

Det: CL

50  $\mu$ m

MIRA3 TESCAN

12520-14-cl

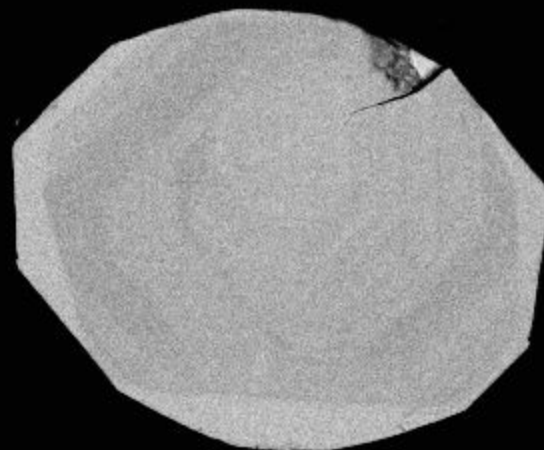
NRCan LMS GSC

54

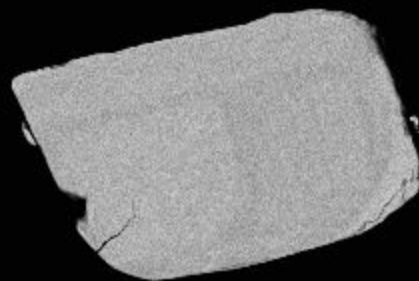


054-1

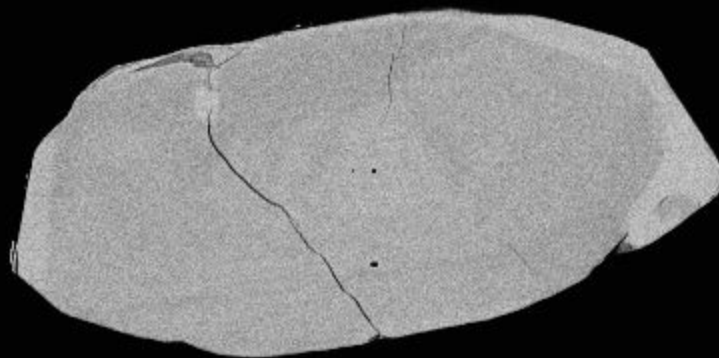
55



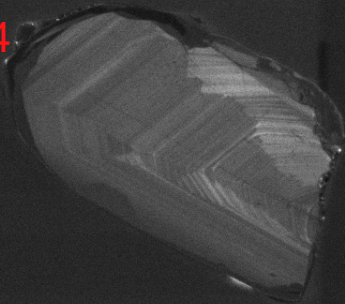
56



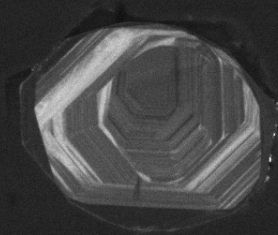
57



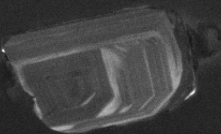
54



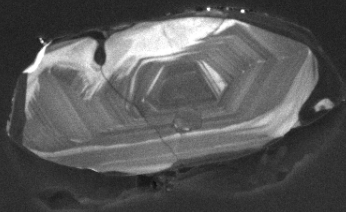
55



56



57



SEM HV: 10.0 kV

WD: 16.37 mm

SEM MAG: 971 x

Det: CL



50  $\mu$ m

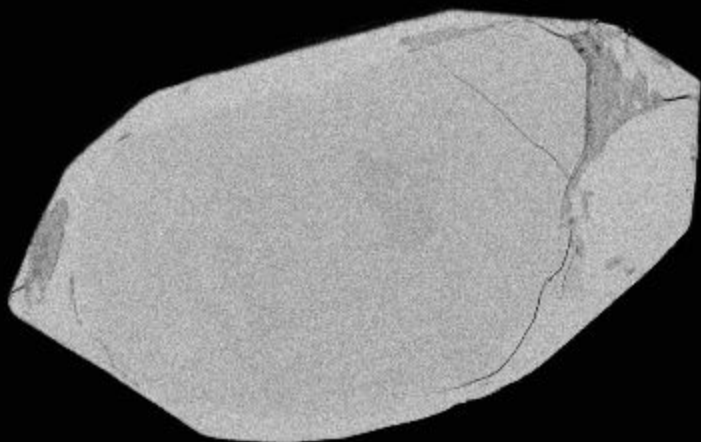
MIRA3 TESCAN

12520-15-cl

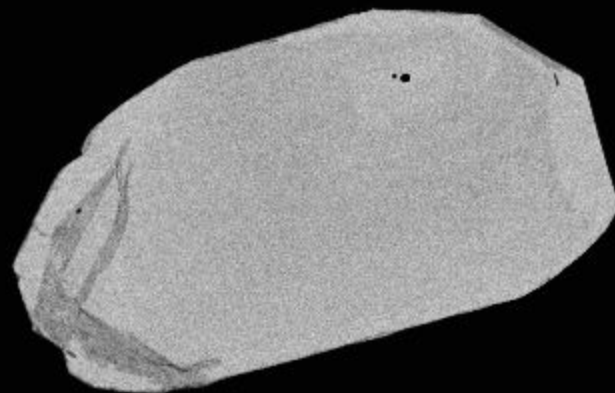
NRCan LMS GSC



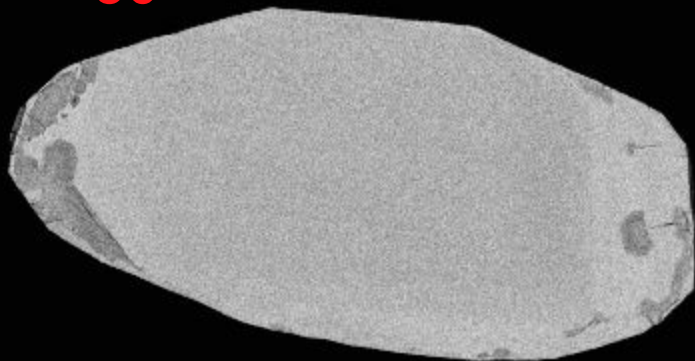
58



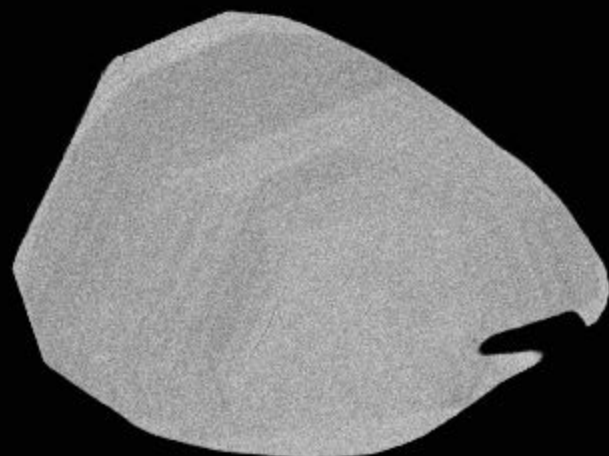
59



60

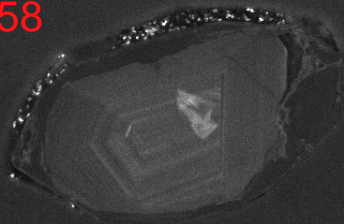


61

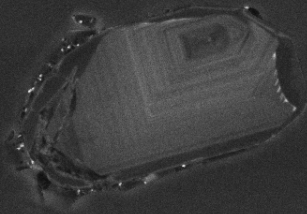


100µm

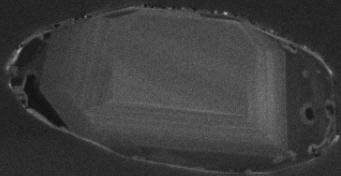
58



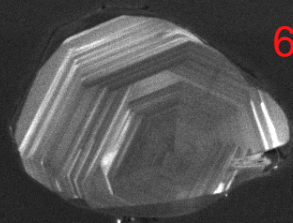
59



60



61



SEM HV: 10.0 kV

WD: 16.37 mm

SEM MAG: 1.02 kx

Det: CL



50  $\mu$ m

MIRA3 TESCAN

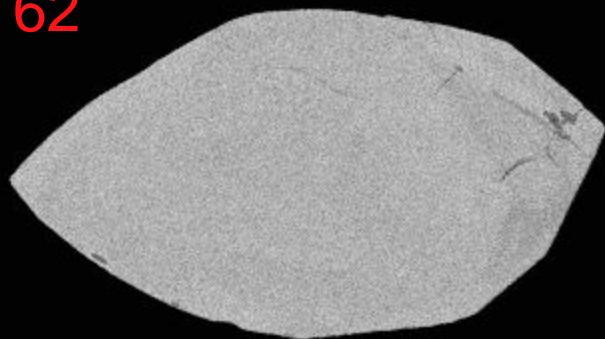
12520-16-cl

NRCan LMS GSC

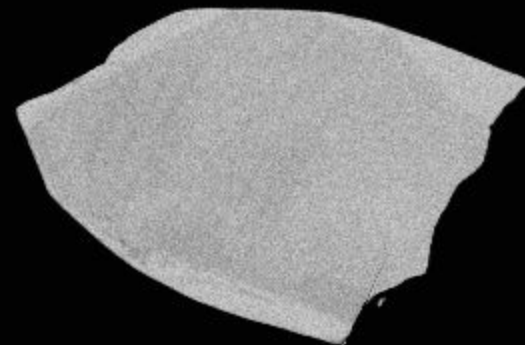




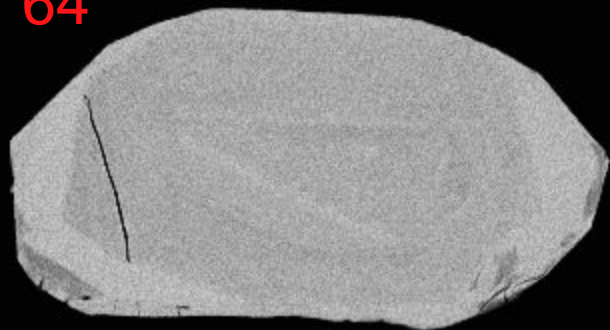
62



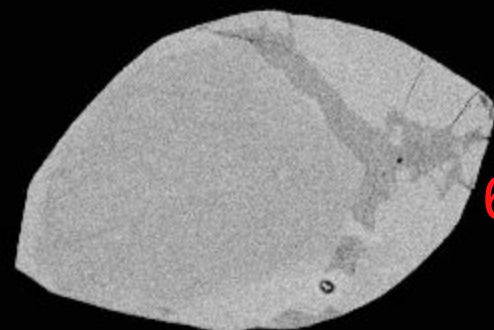
63



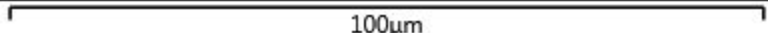
64



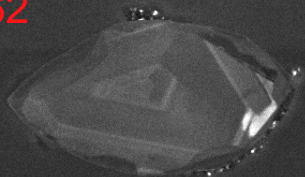
65



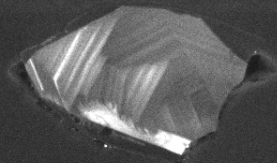
100µm



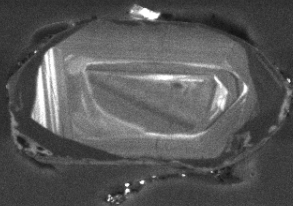
62



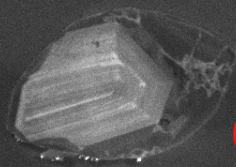
63



64



65



SEM HV: 10.0 kV

WD: 16.37 mm

SEM MAG: 1.02 kx

Det: CL



50  $\mu$ m

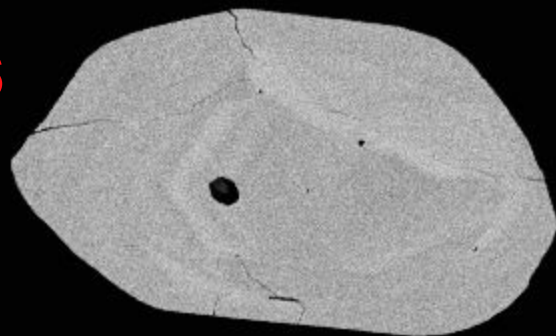
MIRA3 TESCAN

12520-17-cl

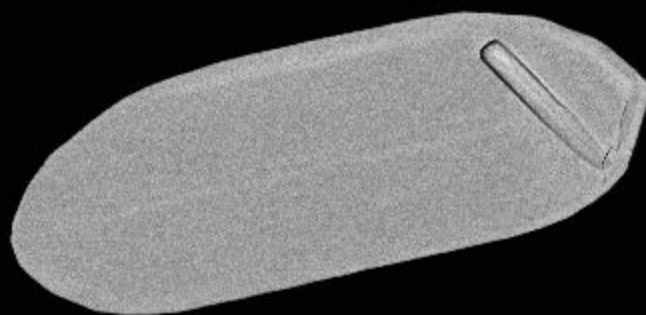
NRCan LMS GSC



66



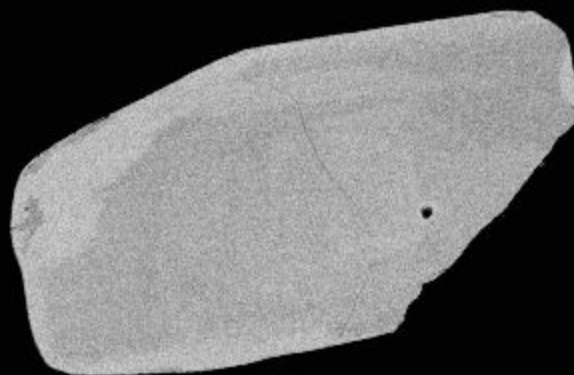
67



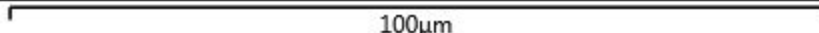
68



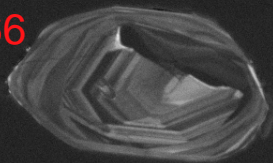
69



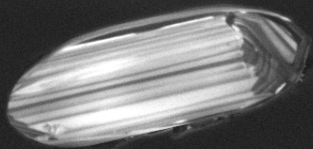
100µm



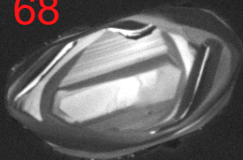
66



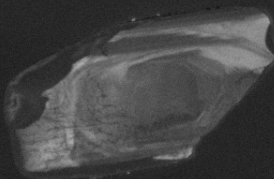
67



68



69



SEM HV: 10.0 kV

WD: 16.37 mm

SEM MAG: 1.09 kx

Det: CL

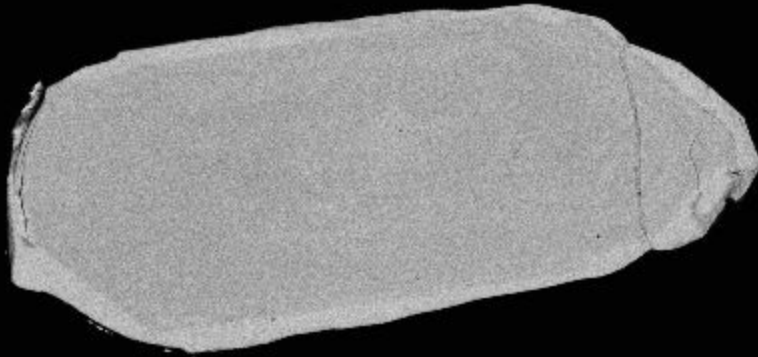
50  $\mu$ m

MIRA3 TESCAN

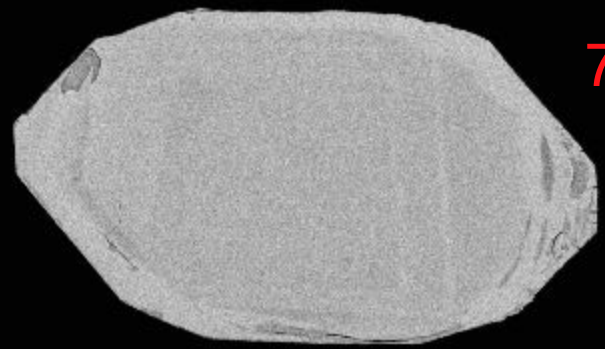
12520-18-cl

NRCan LMS GSC

70



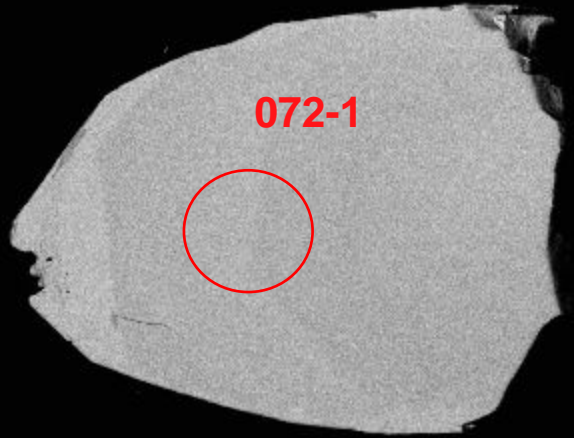
71



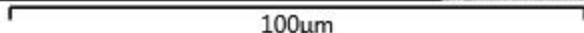
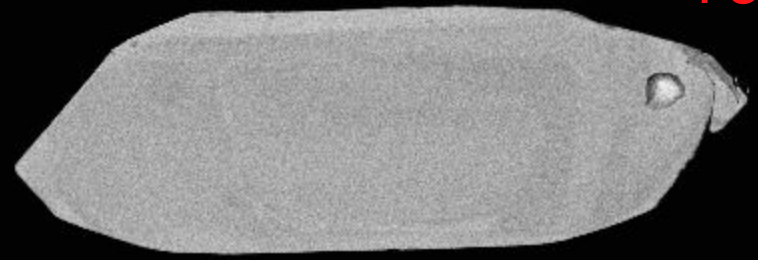
072-1



72



73



70

71

72

73

SEM HV: 10.0 kV

WD: 16.37 mm

SEM MAG: 775 x

Det: CL

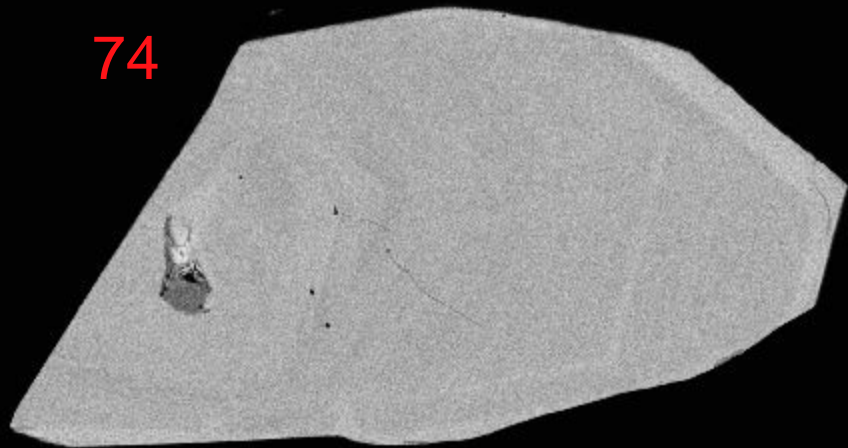
100  $\mu$ m

MIRA3 TESCAN

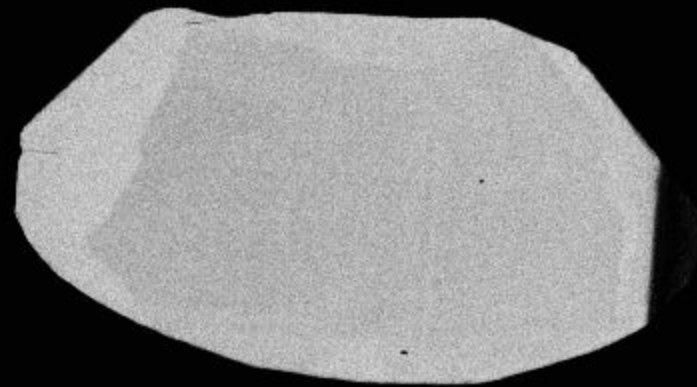
12520-19-cl

NRCan LMS GSC

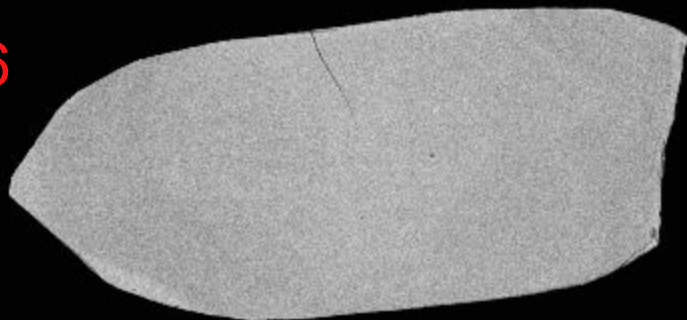
74



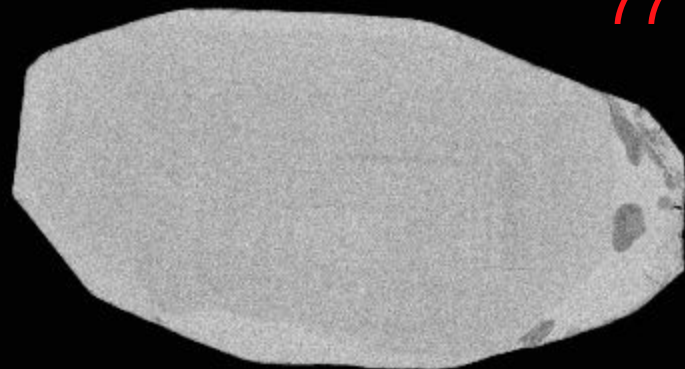
75



76

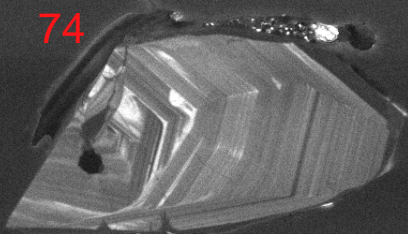


77



100µm

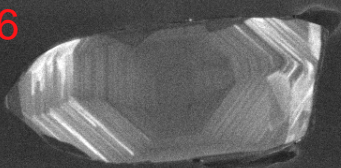
74



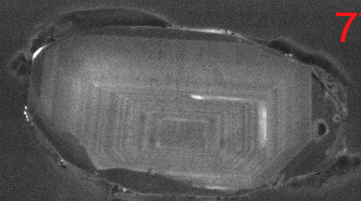
75



76



77



SEM HV: 10.0 kV

WD: 16.37 mm

SEM MAG: 946 x

Det: CL



50  $\mu$ m

MIRA3 TESCAN

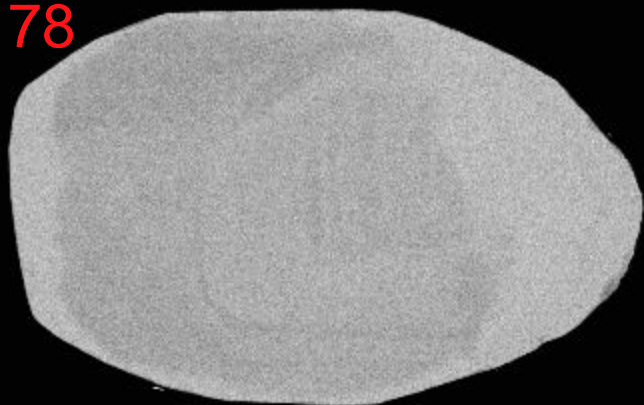
12520-20-cl

NRCan LMS GSC





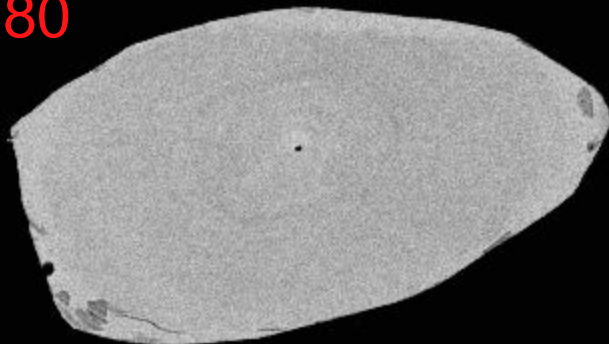
78



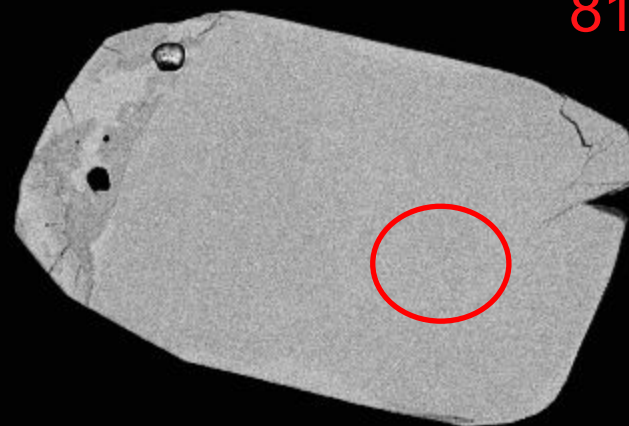
79



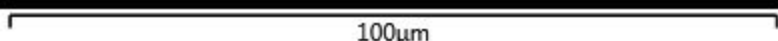
80



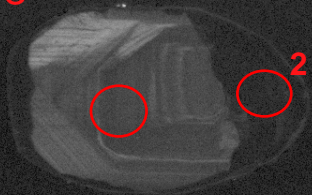
81



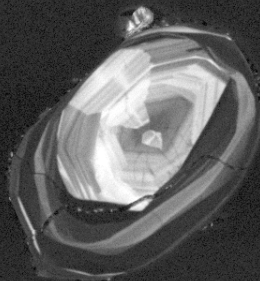
100µm



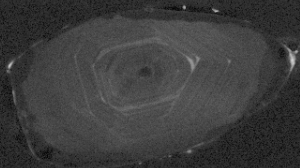
78



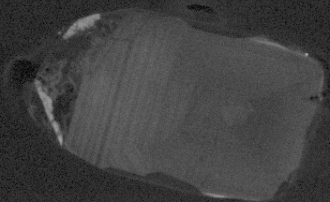
79



80



81



SEM HV: 10.0 kV

WD: 16.37 mm

SEM MAG: 1.03 kx

Det: CL



50  $\mu$ m

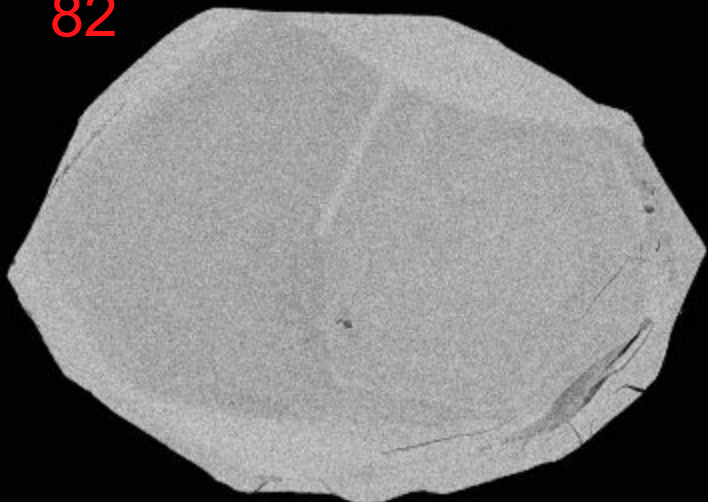
MIRA3 TESCAN

12520-21-cl

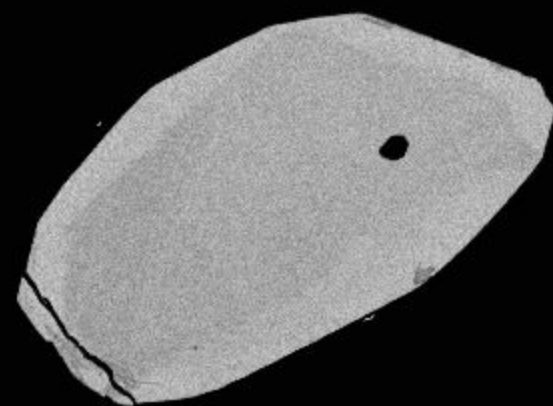
NRCan LMS GSC



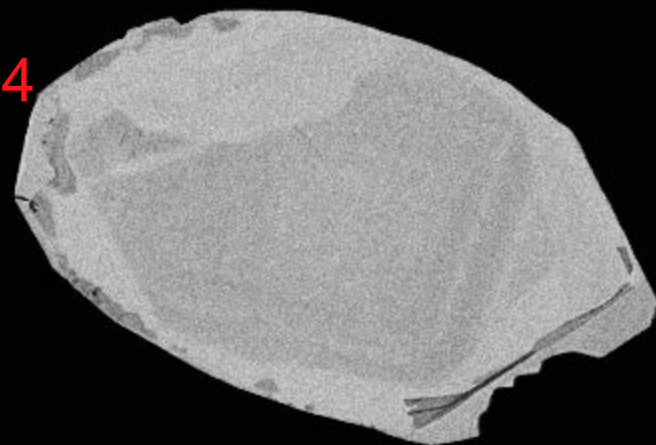
82



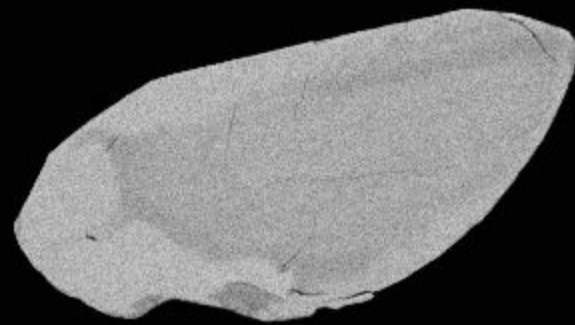
83



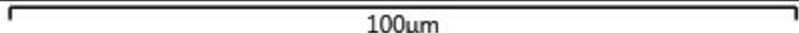
84



85



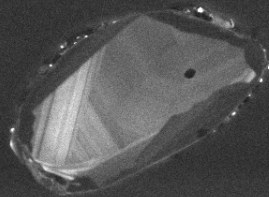
100µm



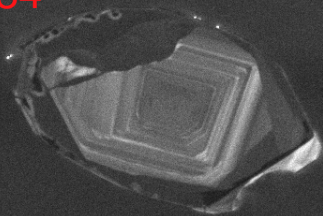
82



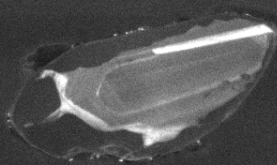
83



84



85



SEM HV: 10.0 kV

WD: 16.37 mm

SEM MAG: 1.06 kx

Det: CL



50  $\mu$ m

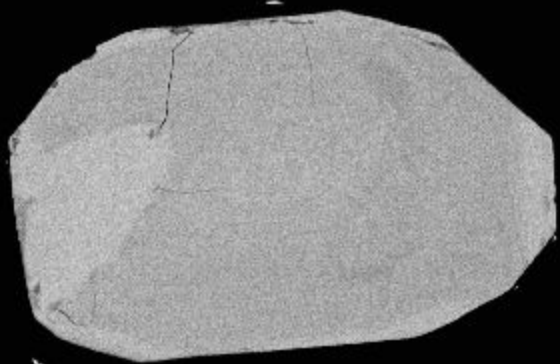
MIRA3 TESCAN

12520-22-cl

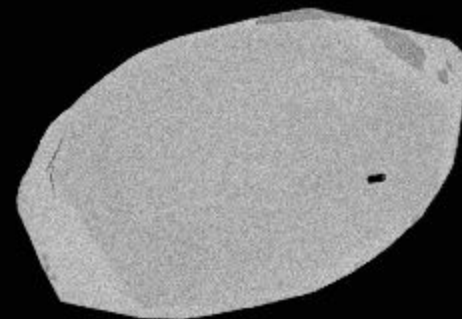
NRCan LMS GSC



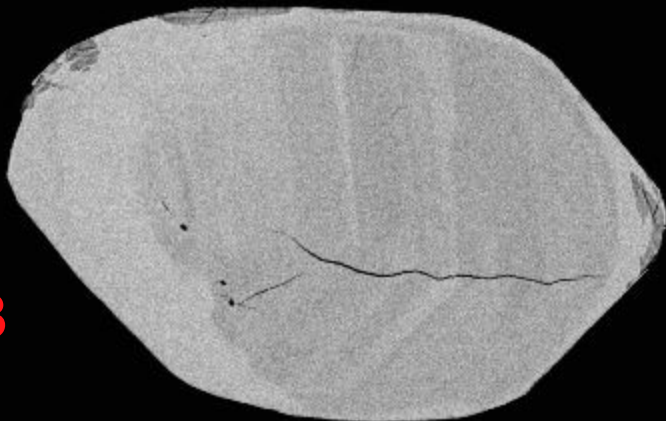
86



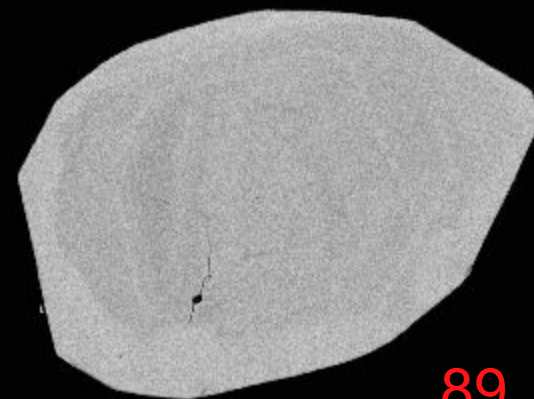
87



88

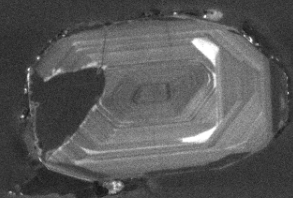


89

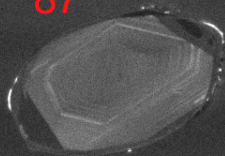


100μm

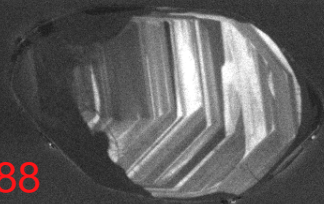
86



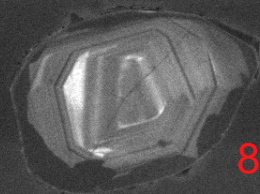
87



88



89



SEM HV: 10.0 kV

WD: 16.37 mm

SEM MAG: 983 x

Det: CL



50  $\mu$ m

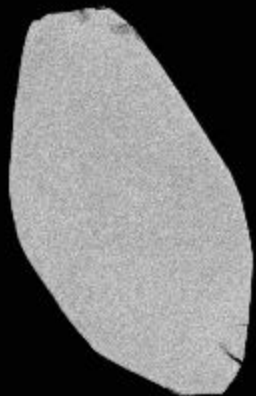
MIRA3 TESCAN

12520-23-cl

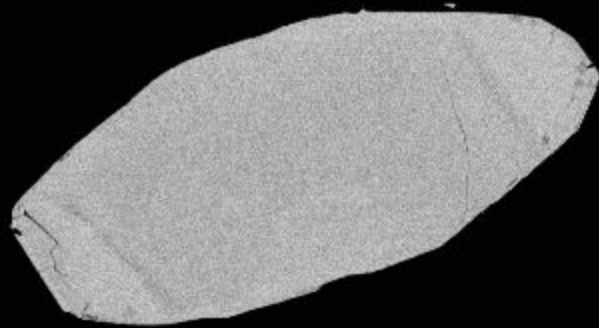
NRCan LMS GSC



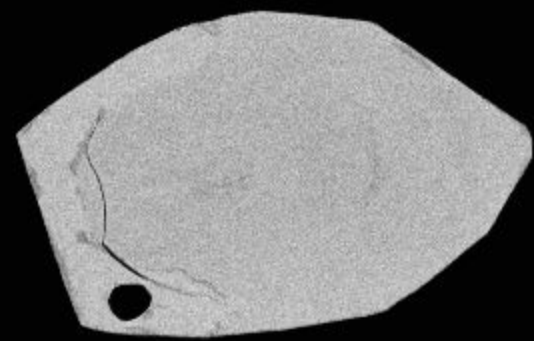
90



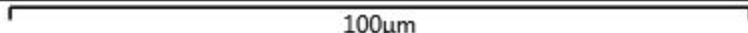
91

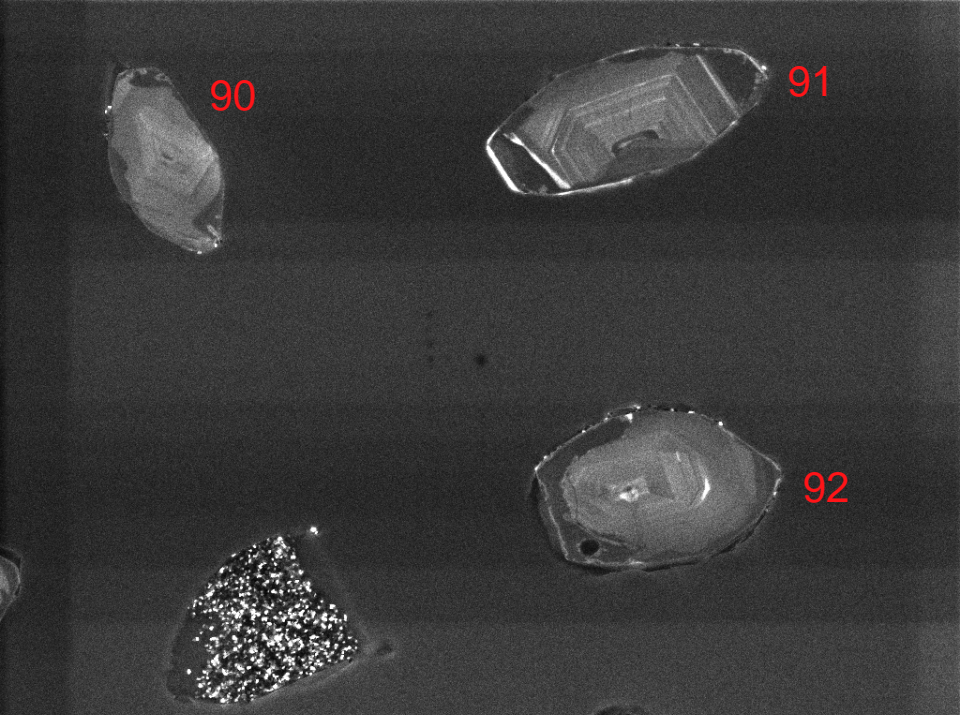


92



100µm





90

91

92

SEM HV: 10.0 kV

WD: 16.37 mm

SEM MAG: 997 x

Det: CL



50  $\mu$ m

MIRA3 TESCAN

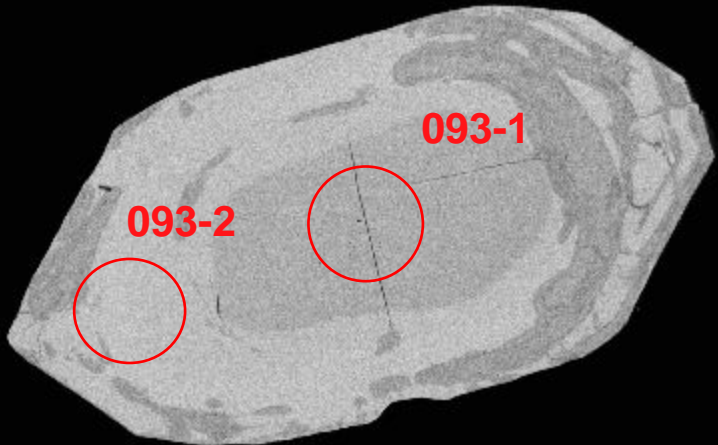
12520-24-cl

NRCan LMS GSC

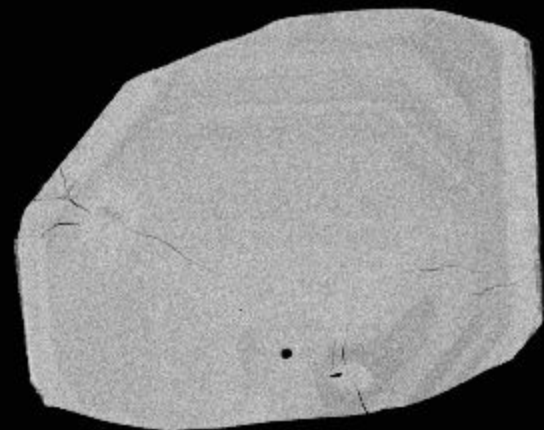




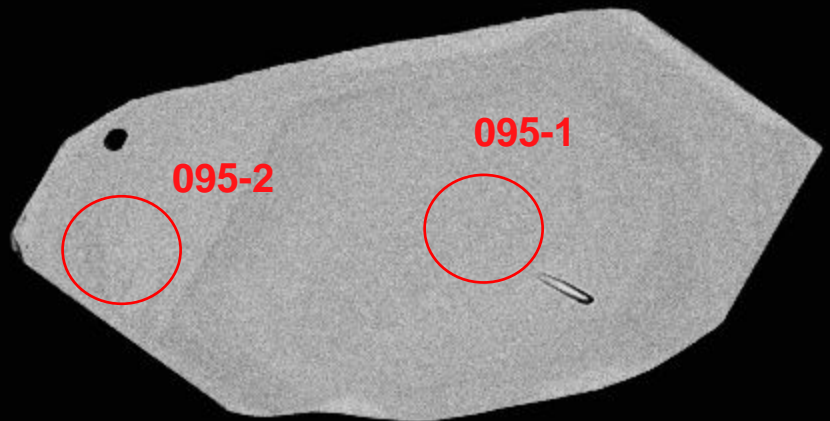
93



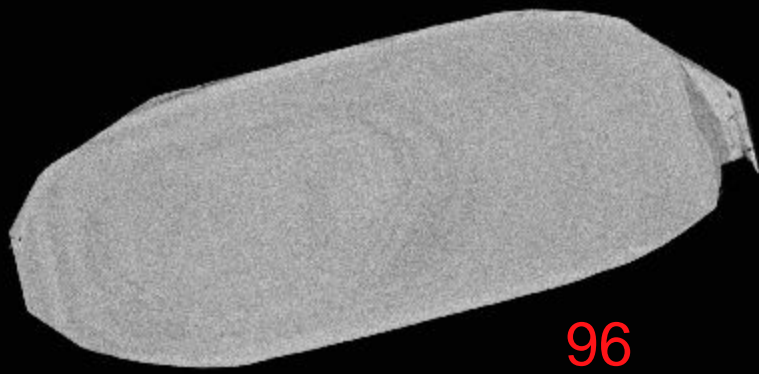
94



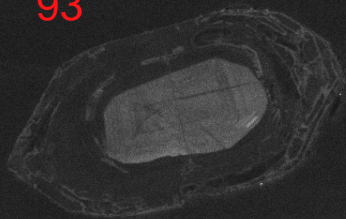
95



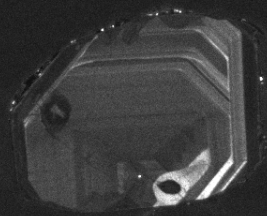
96



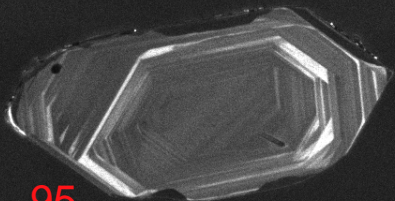
93



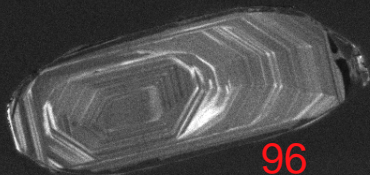
94



95



96



SEM HV: 10.0 kV

WD: 16.37 mm

SEM MAG: 853 x

Det: CL

100 µm

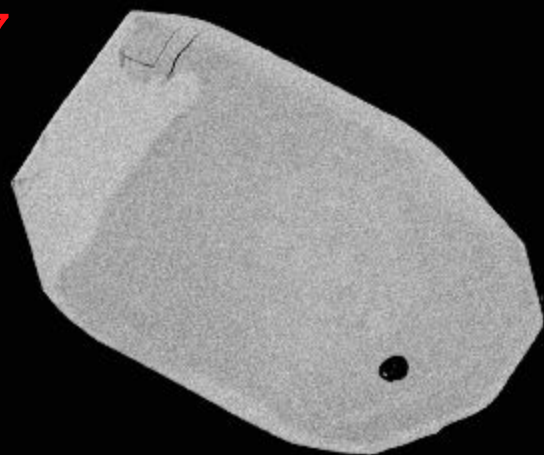
MIRA3 TESCAN

12520-25-cl

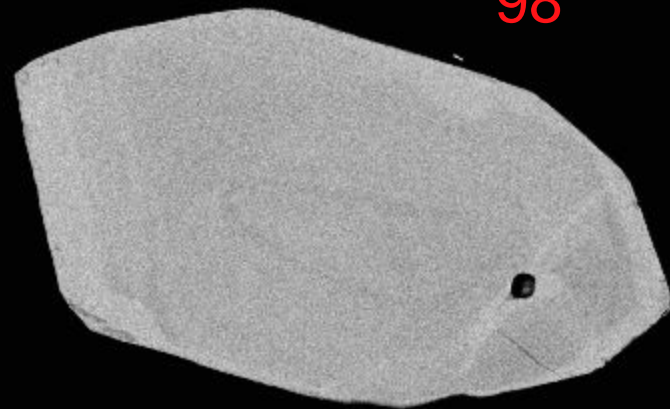
NRCan LMS GSC



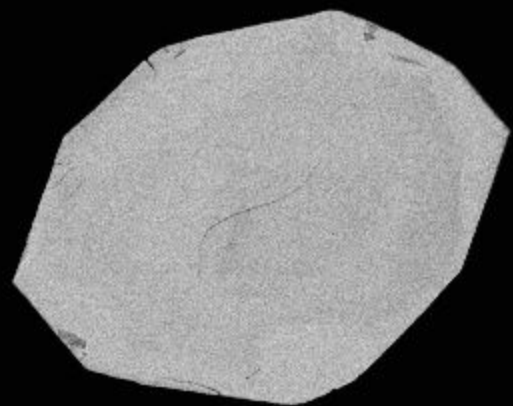
97



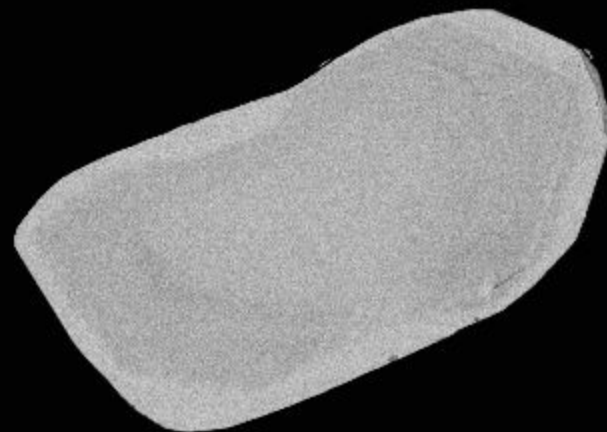
98



99

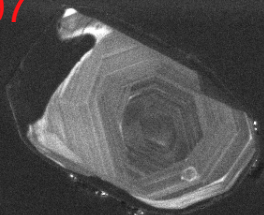


100

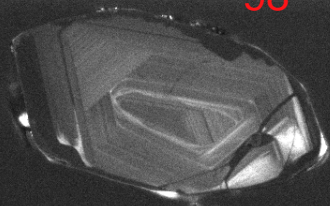


100µm

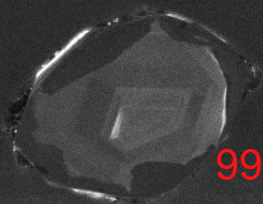
97



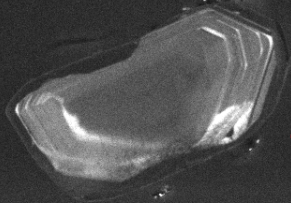
98



99



100



SEM HV: 10.0 kV

WD: 16.37 mm

SEM MAG: 904 x

Det: CL



50  $\mu$ m

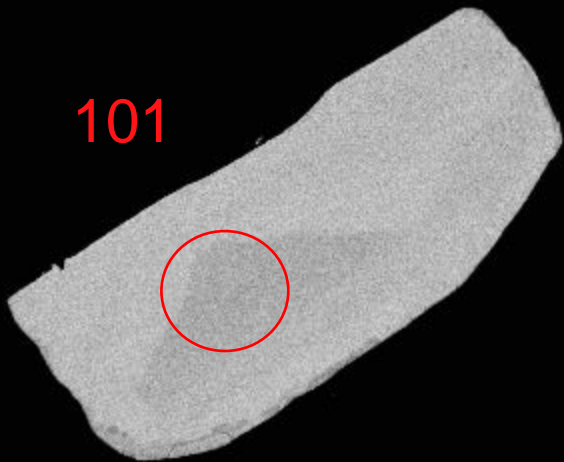
MIRA3 TESCAN

12520-26-cl

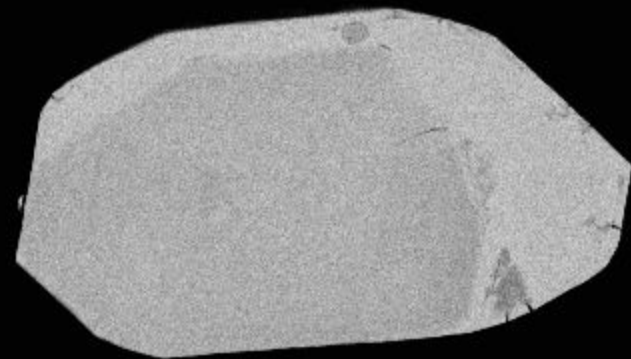
NRCan LMS GSC



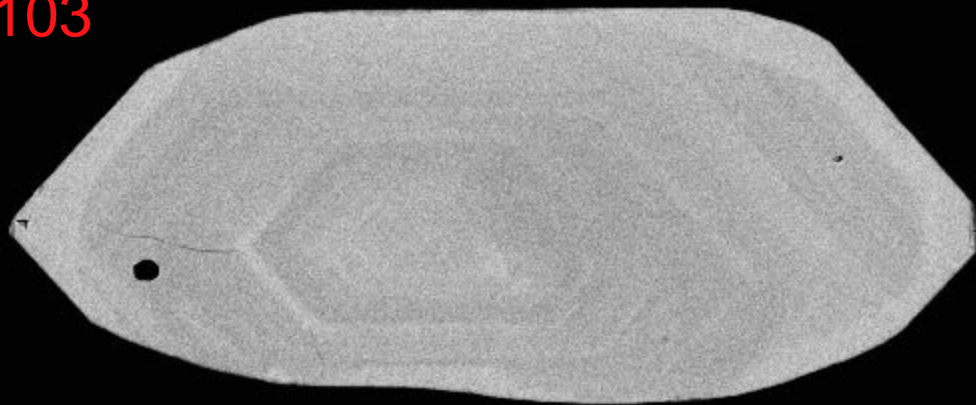
101



102



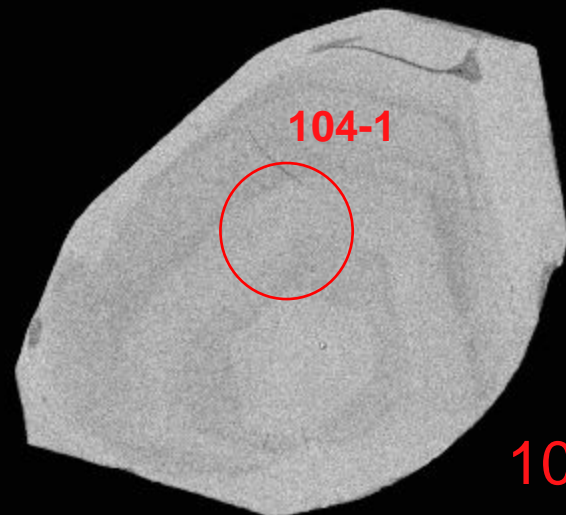
103



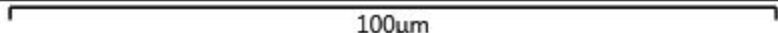
104-1



104



100µm



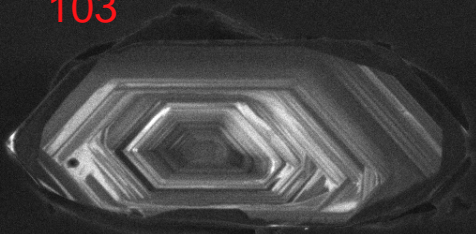
101



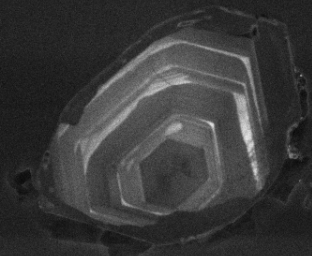
102



103



104



SEM HV: 10.0 kV

WD: 16.37 mm

SEM MAG: 1.03 kx

Det: CL



50 µm

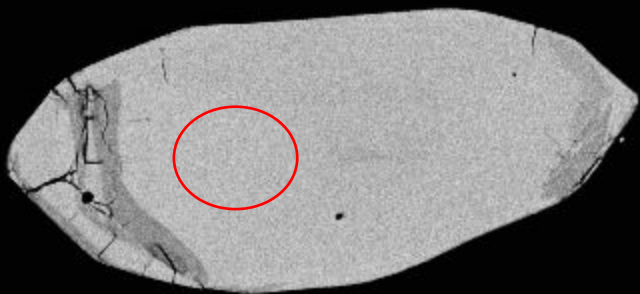
MIRA3 TESCAN

12520-27-cl

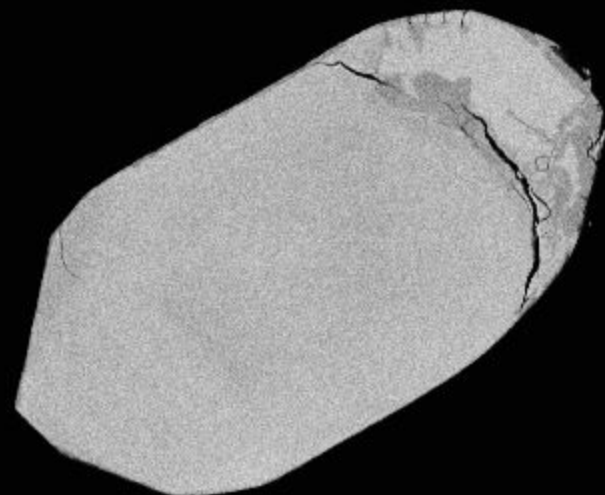
NRCan LMS GSC



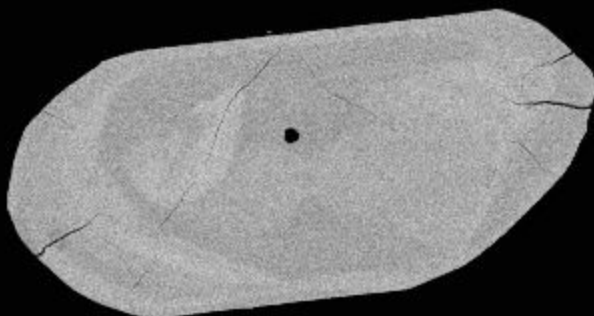
105



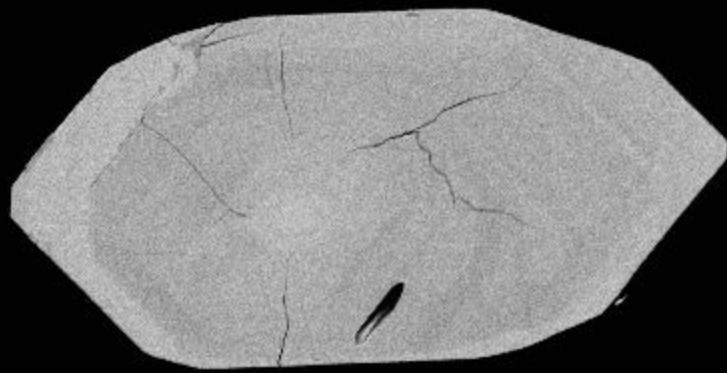
106



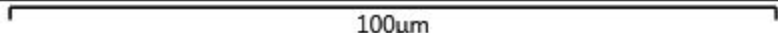
107



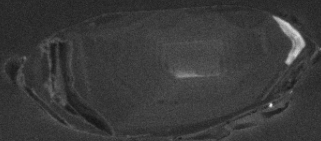
108



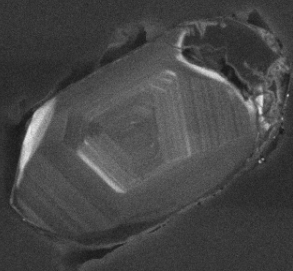
100µm



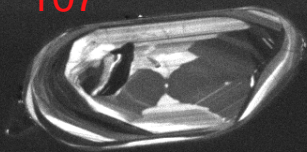
105



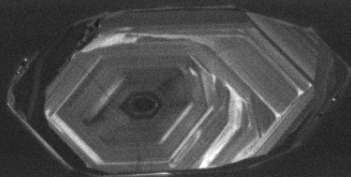
106



107



108



SEM HV: 10.0 kV

WD: 16.37 mm

SEM MAG: 1.03 kx

Det: CL



50  $\mu$ m

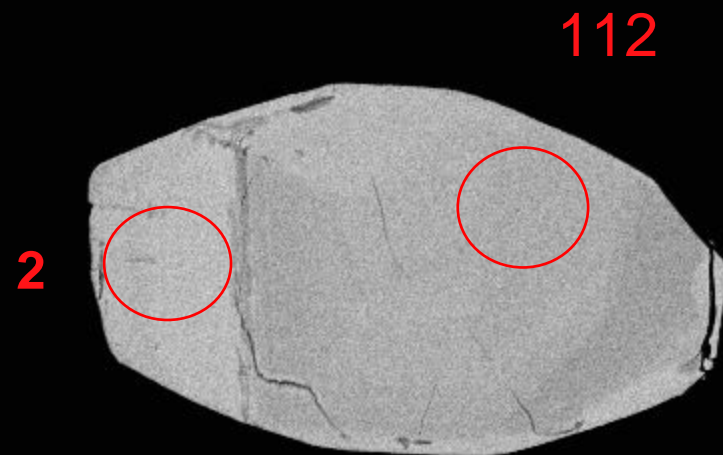
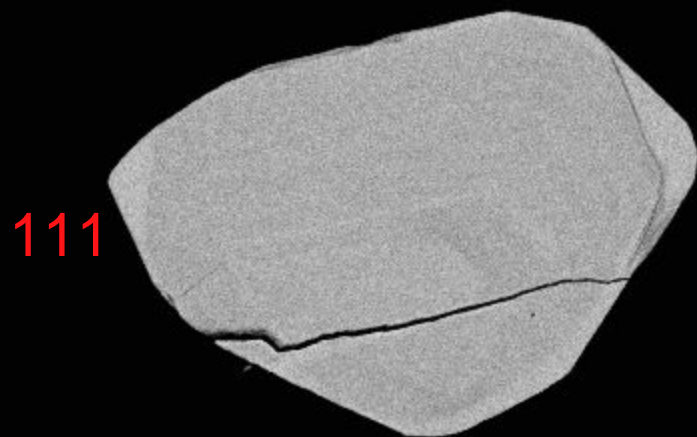
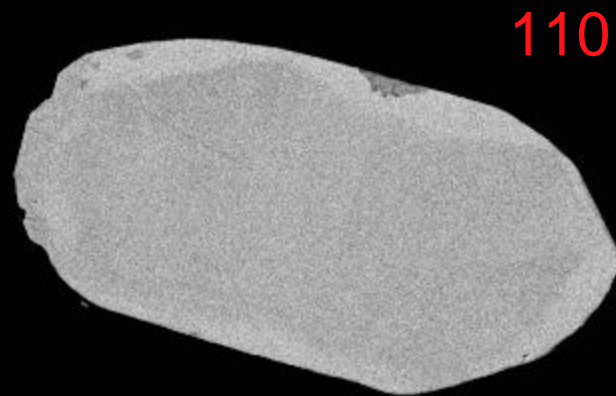
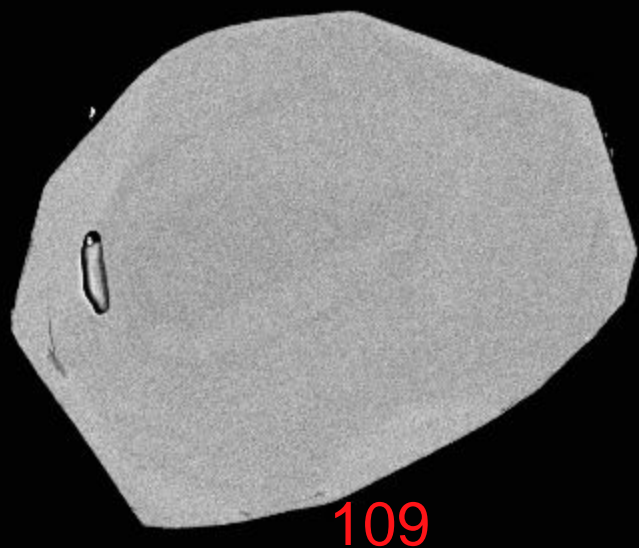
MIRA3 TESCAN

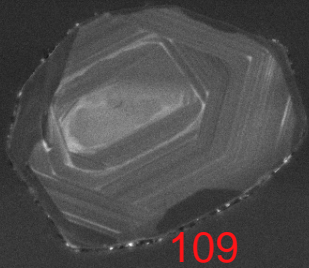
12520-28-cl

NRCan LMS GSC

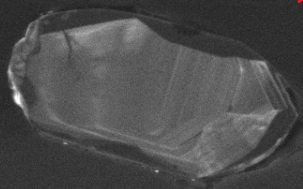




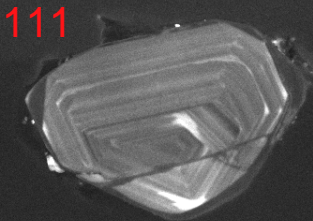




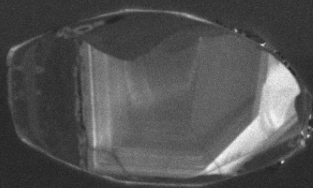
109



110



111



112

SEM HV: 10.0 kV

WD: 16.37 mm

SEM MAG: 1.18 kx

Det: CL



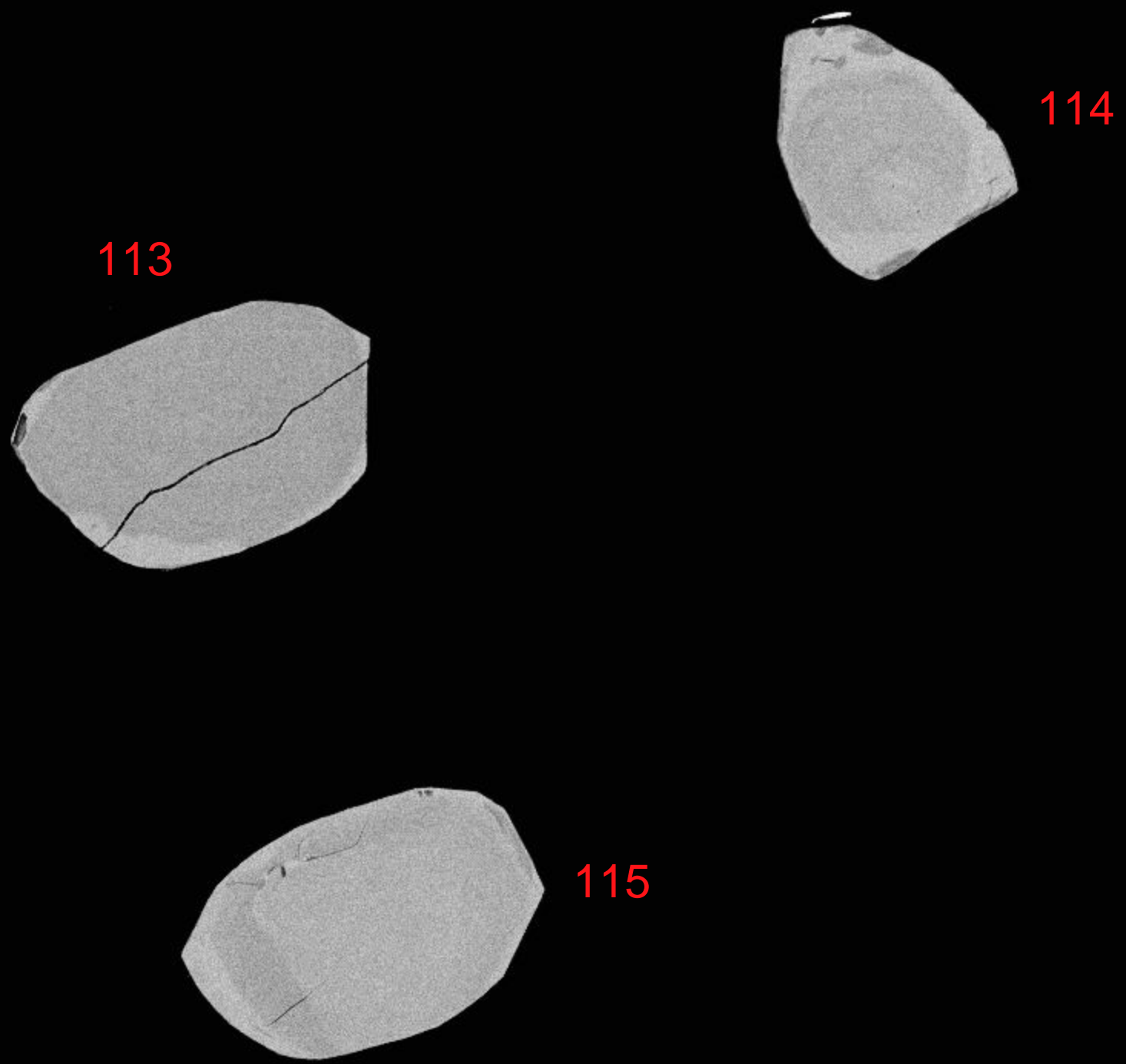
50  $\mu$ m

MIRA3 TESCAN

12520-29-cl

NRCan LMS GSC



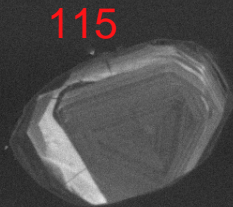
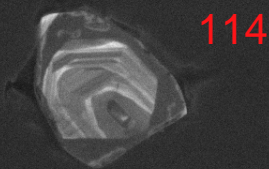
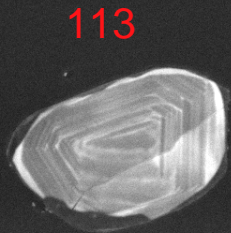


113

114

115

50μm



SEM HV: 10.0 kV

WD: 16.37 mm

SEM MAG: 1.12 kx

Det: CL



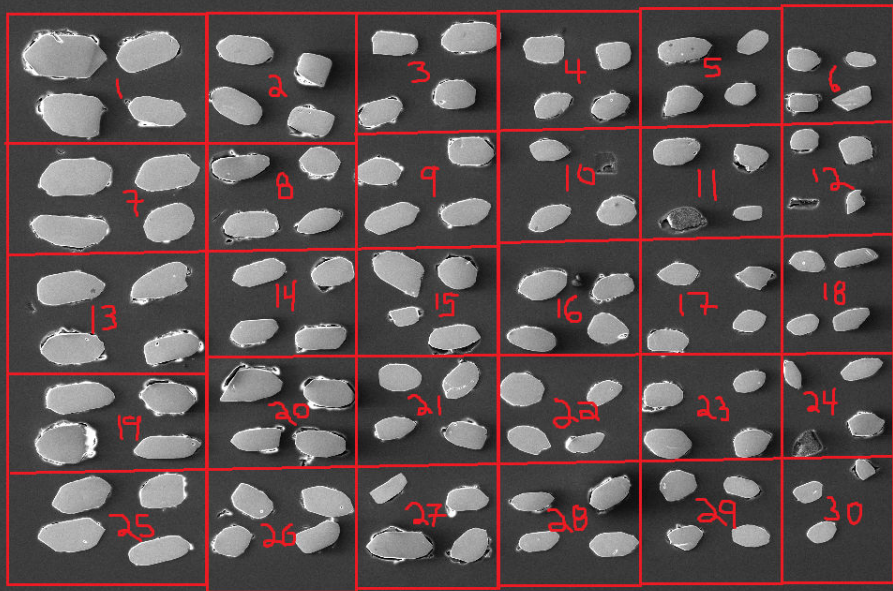
50  $\mu$ m

MIRA3 TESCAN

12520-30-cl

NRCan LMS GSC





SEM HV: 20.0 kV

WD: 49.48 mm

MIRA3 TESCAN

SEM MAG: 150 x

Det: SE

500 µm

12520-map

NRCan LMS GSC