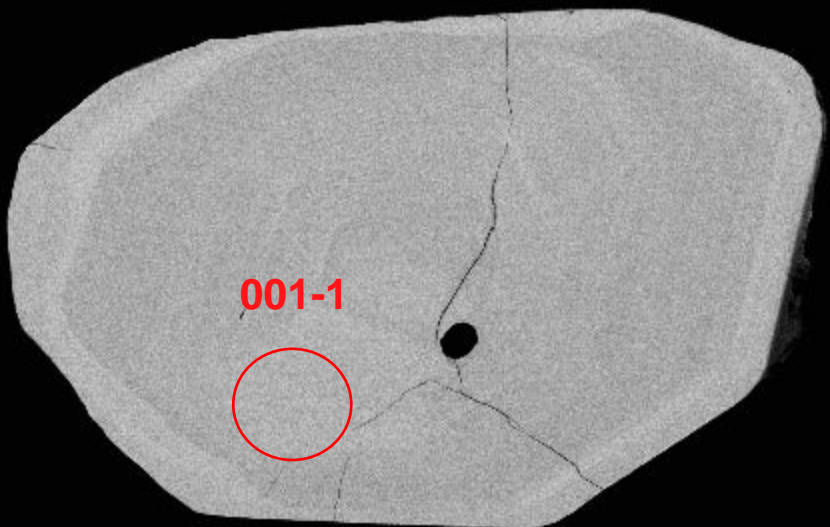
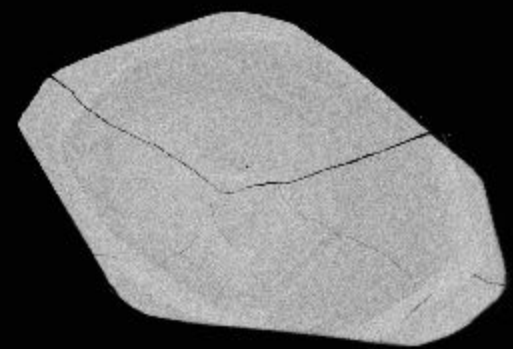


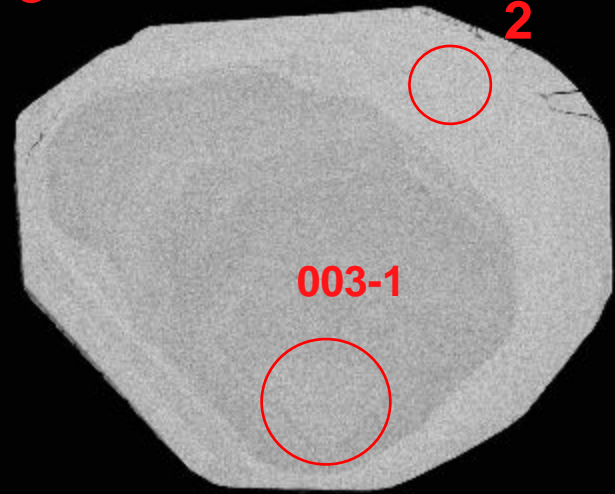
1



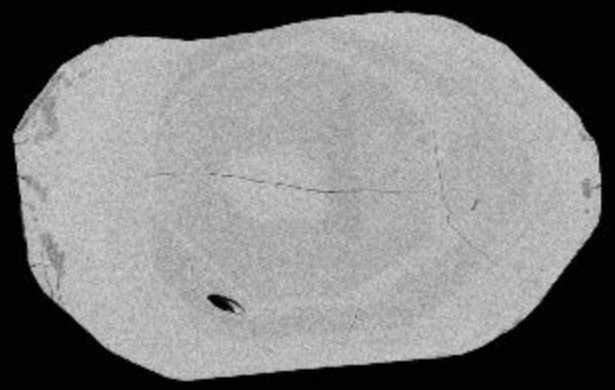
2

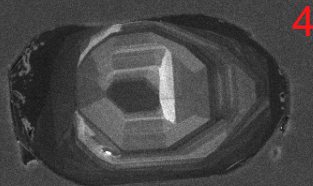
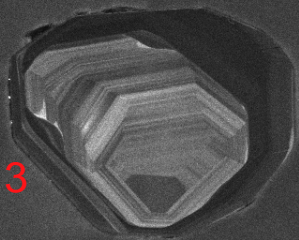
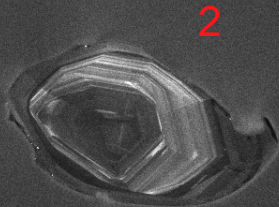
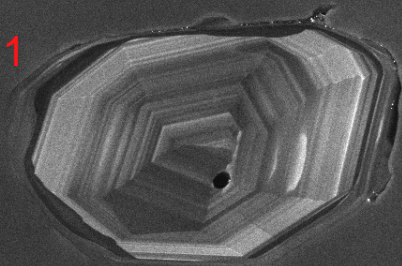


3



4





SEM HV: 10.0 kV

WD: 16.34 mm

SEM MAG: 498 x

Det: CL



100  $\mu$ m

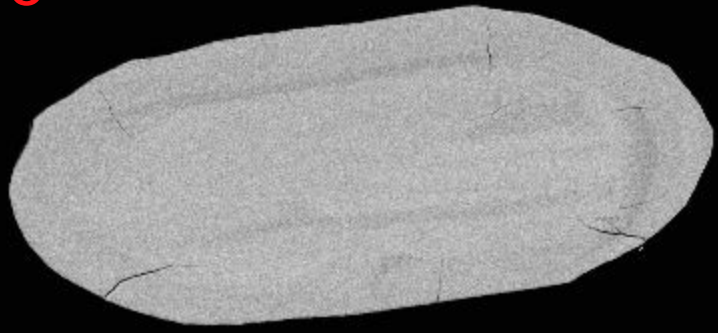
MIRA3 TESCAN

12521-01-cl

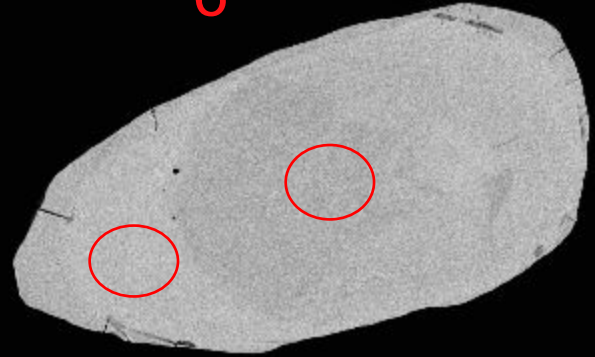
NRCan LMS GSC



5

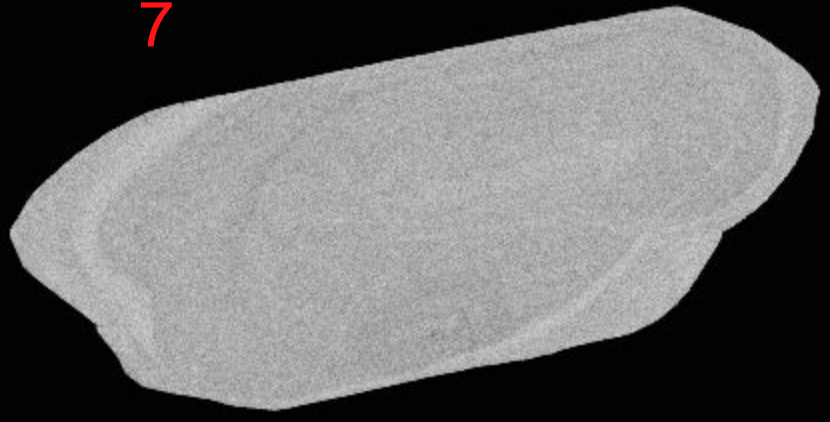


6

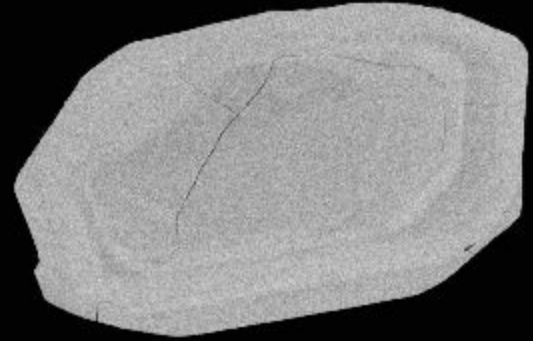


2

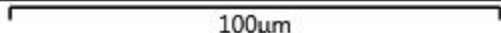
7



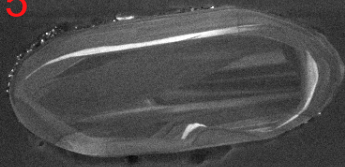
8



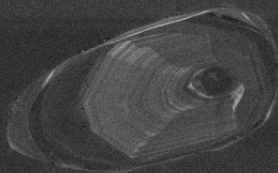
100µm



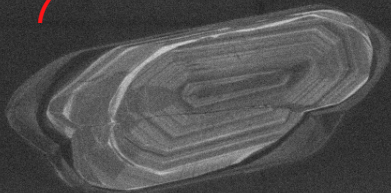
5



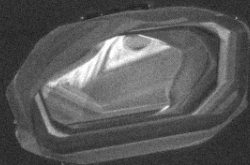
6



7



8



SEM HV: 10.0 kV

WD: 16.34 mm

SEM MAG: 661 x

Det: CL



100  $\mu$ m

MIRA3 TESCAN

12521-02-cl

NRCan LMS GSC

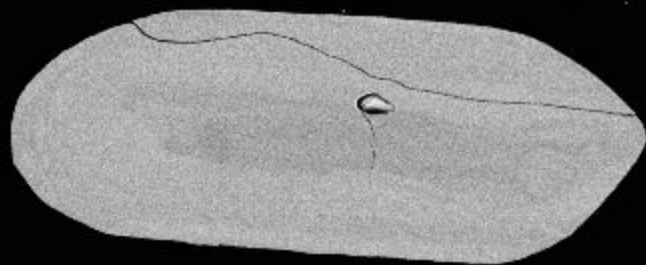




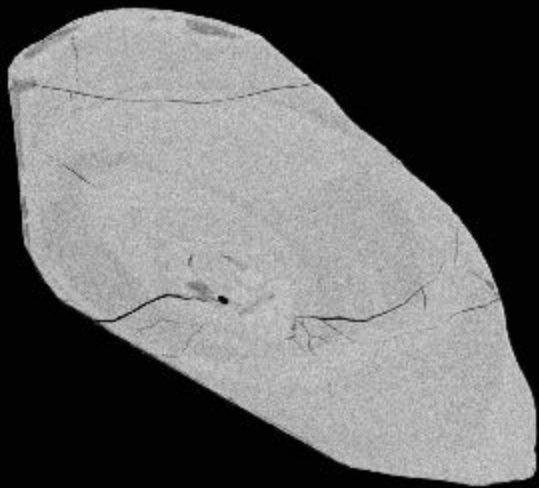
9



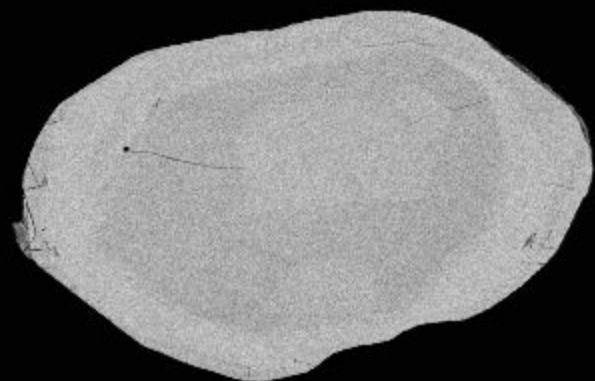
10



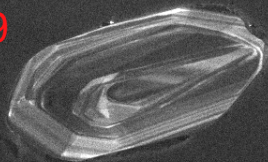
11



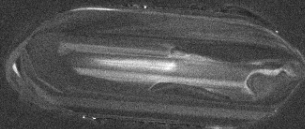
12



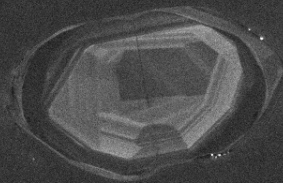
9



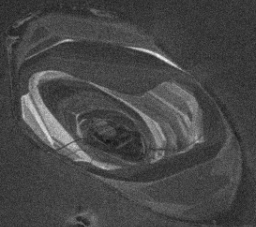
10



12



11



SEM HV: 10.0 kV

WD: 16.34 mm

SEM MAG: 661 x

Det: CL



100  $\mu$ m

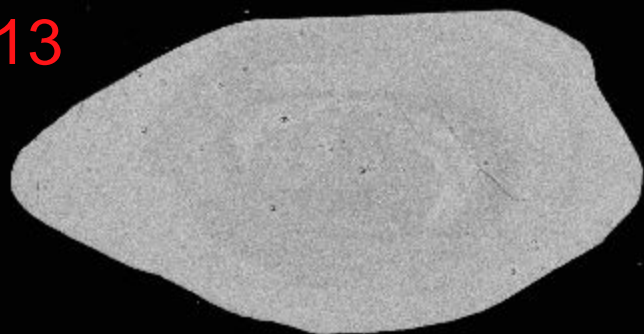
MIRA3 TESCAN

12521-03-cl

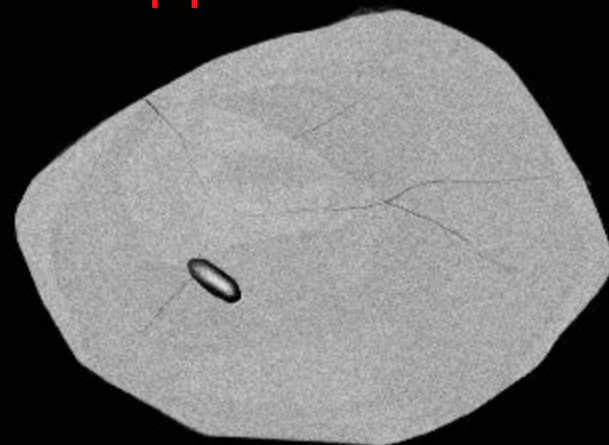
NRCan LMS GSC



13

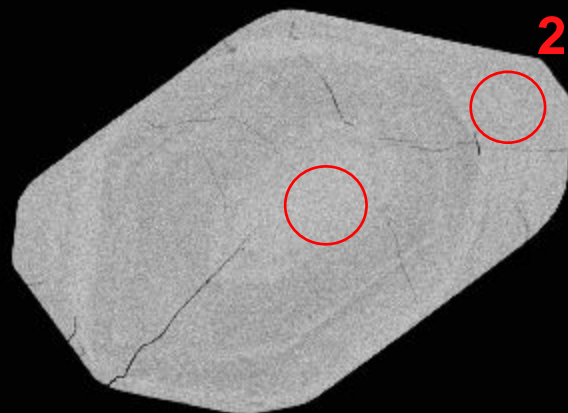


14



2

16



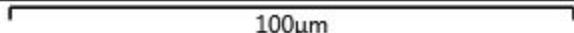
15

015-2

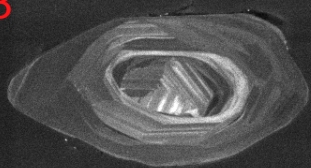
015-1



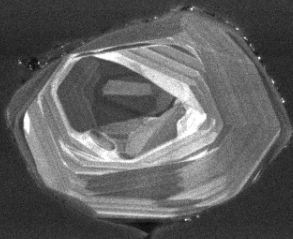
100µm



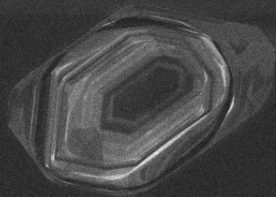
13



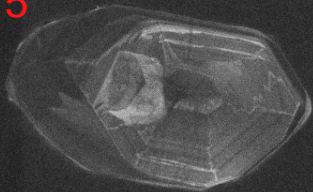
14



16



15



SEM HV: 10.0 kV

WD: 16.34 mm

SEM MAG: 760 x

Det: CL

100 µm

MIRA3 TESCAN

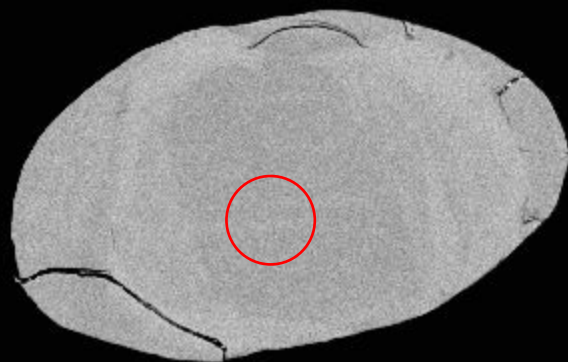
12521-04-cl

NRCan LMS GSC

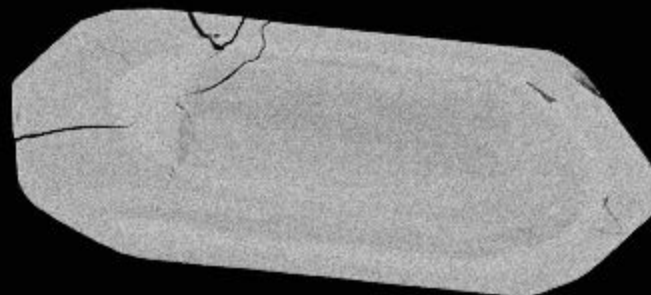




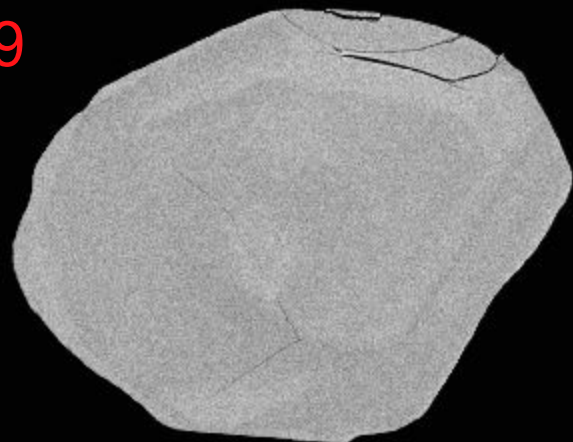
17



18



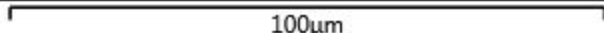
19



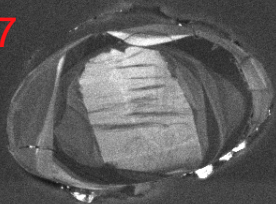
20



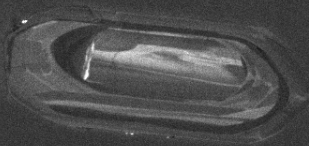
100µm



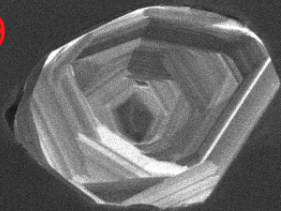
17



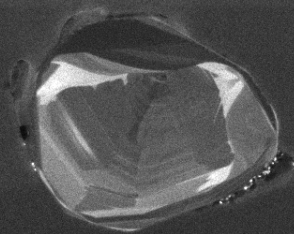
18



19



20



SEM HV: 10.0 kV

WD: 16.34 mm

MIRA3 TESCAN

SEM MAG: 802 x

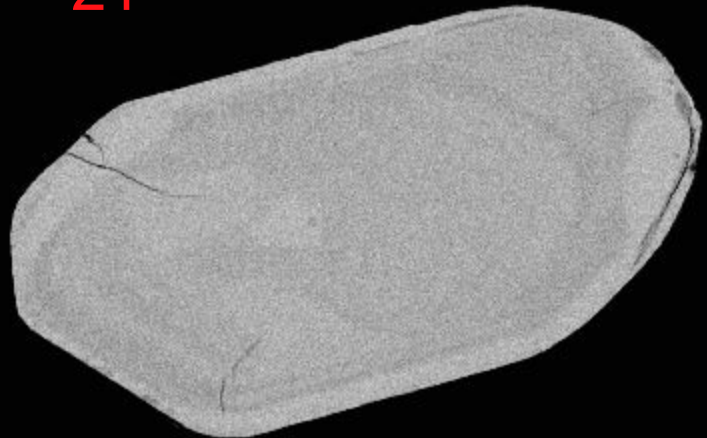
Det: CL

100 µm

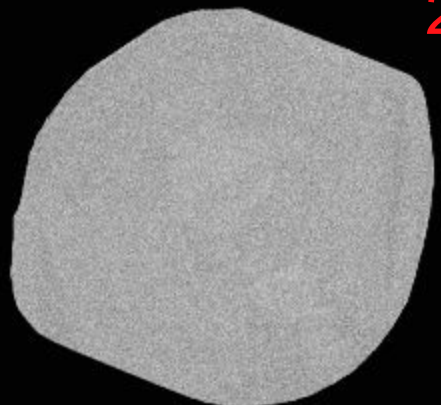
12521-05-cl

NRCan LMS GSC

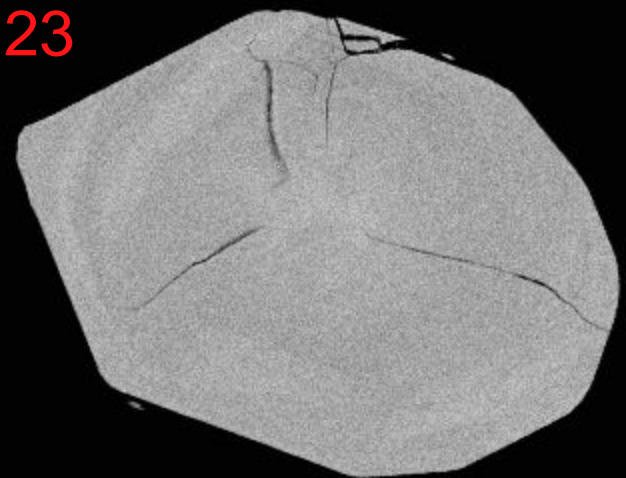
21



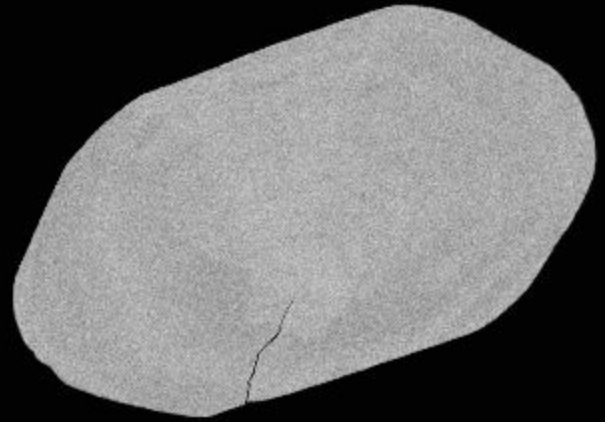
22



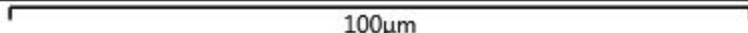
23



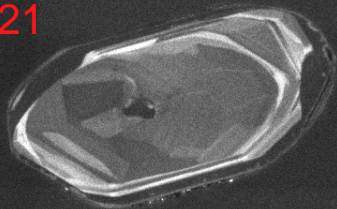
24



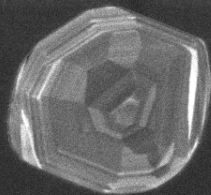
100μm



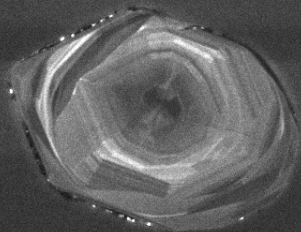
21



22



23



24



SEM HV: 10.0 kV

WD: 16.34 mm

SEM MAG: 998 x

Det: CL



50  $\mu$ m

MIRA3 TESCAN

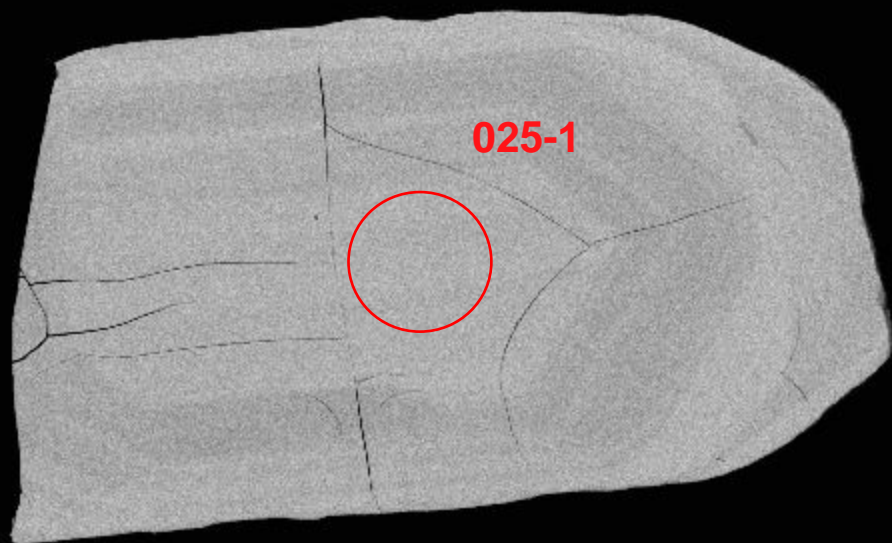
12521-06-cl

NRCan LMS GSC

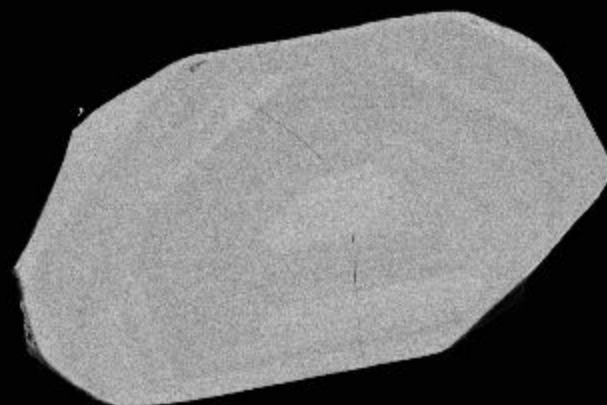




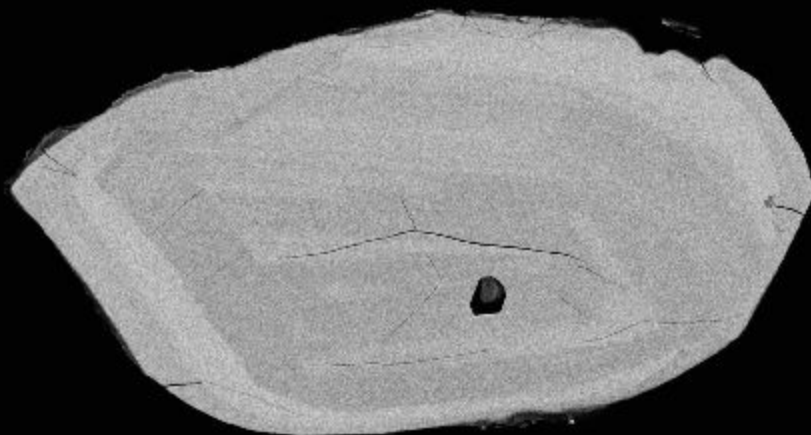
25



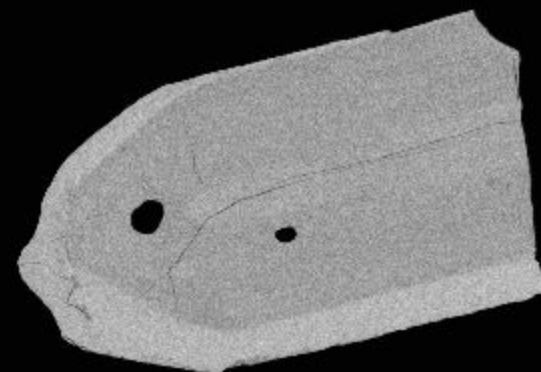
26



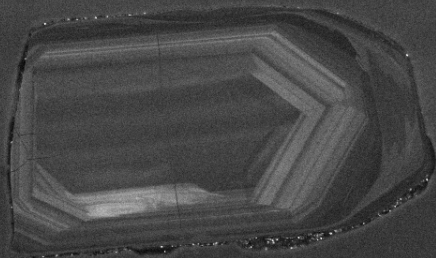
27



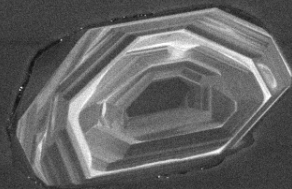
28



25



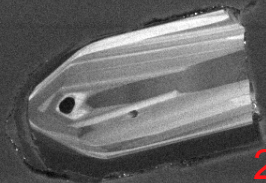
26



27



28



SEM HV: 10.0 kV

WD: 16.34 mm

SEM MAG: 528 x

Det: CL



100  $\mu$ m

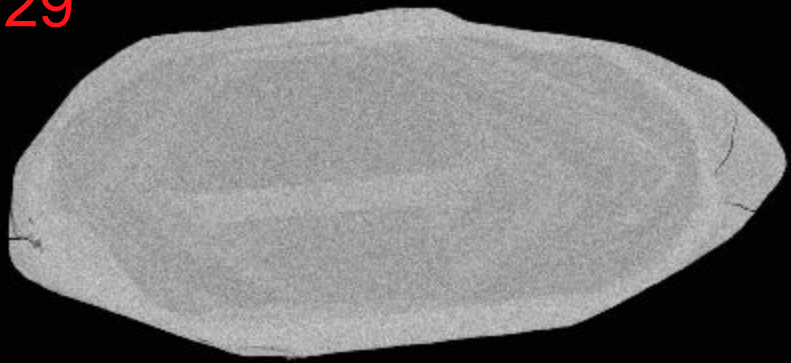
MIRA3 TESCAN

12521-07-cl

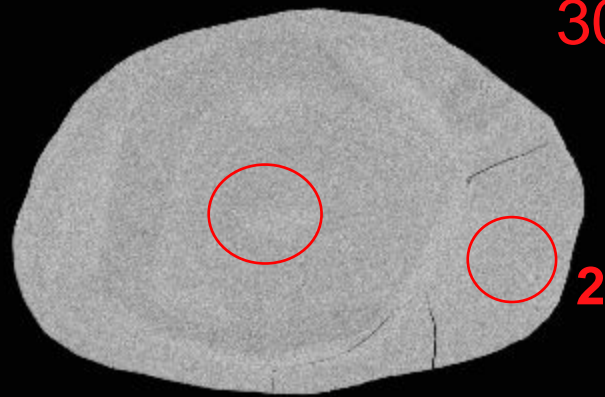
NRCan LMS GSC



29

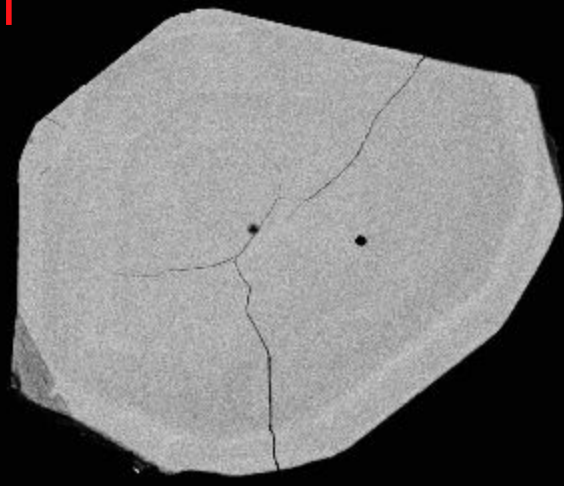


30

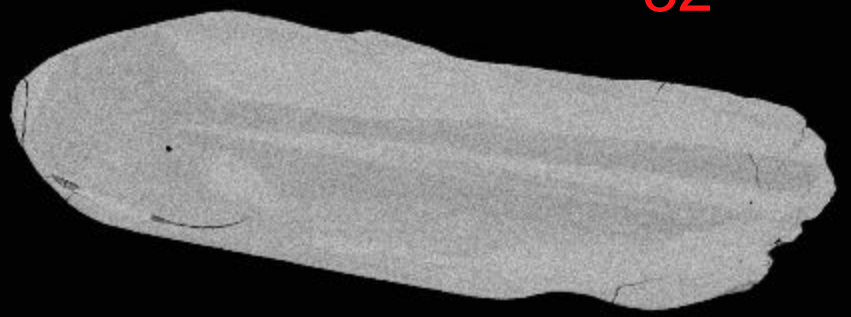


2

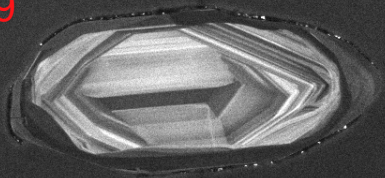
31



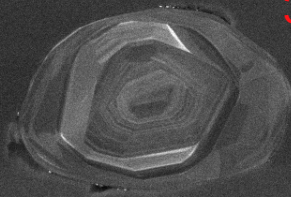
32



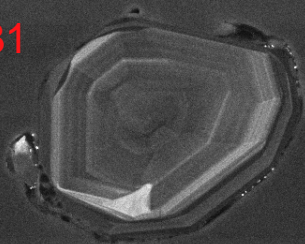
29



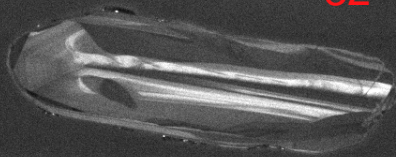
30



31



32



SEM HV: 10.0 kV

WD: 16.34 mm

SEM MAG: 667 x

Det: CL



100  $\mu$ m

MIRA3 TESCAN

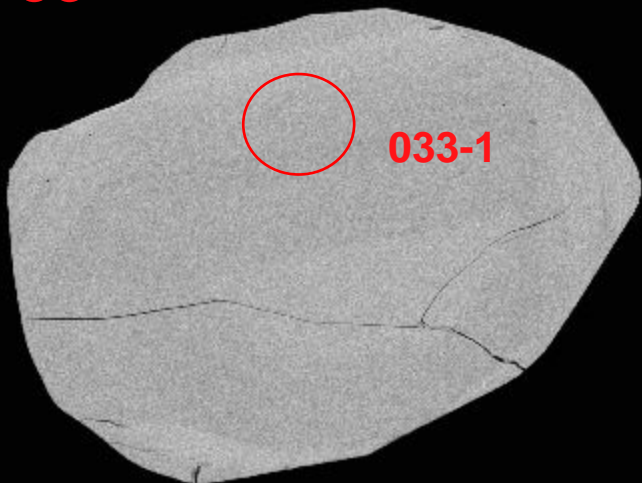
12521-08-cl

NRCan LMS GSC

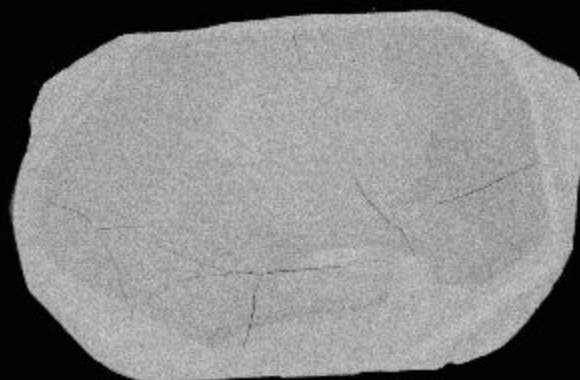




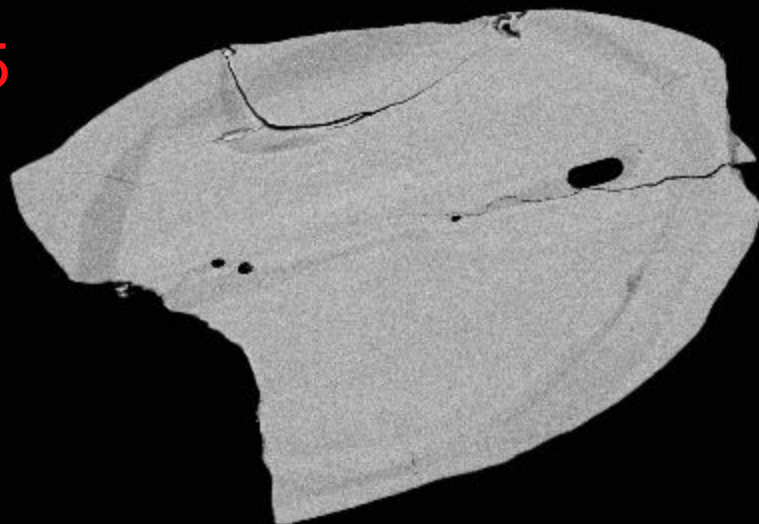
33



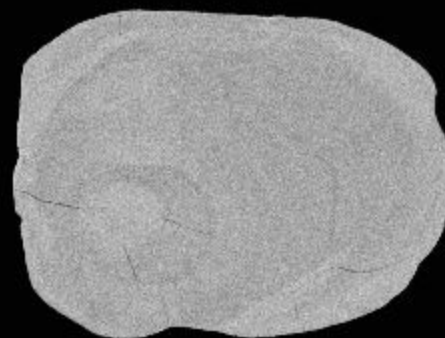
34



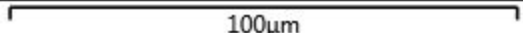
35



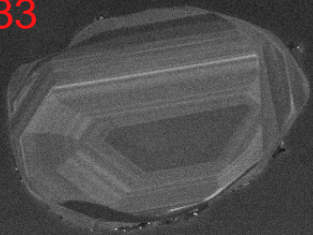
36



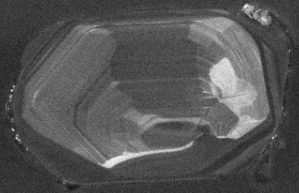
100µm



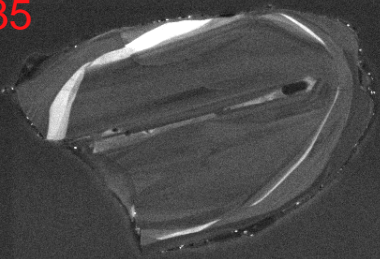
33



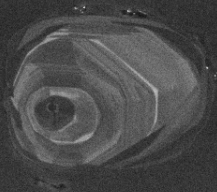
34



35



36



SEM HV: 10.0 kV

WD: 16.34 mm

SEM MAG: 684 x

Det: CL



100  $\mu$ m

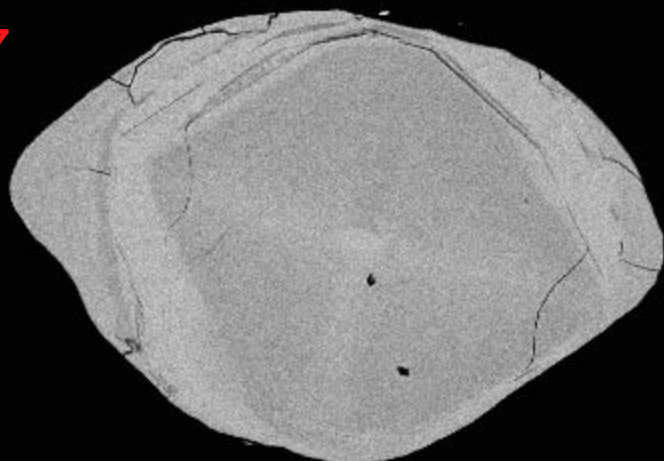
MIRA3 TESCAN

12521-09-cl

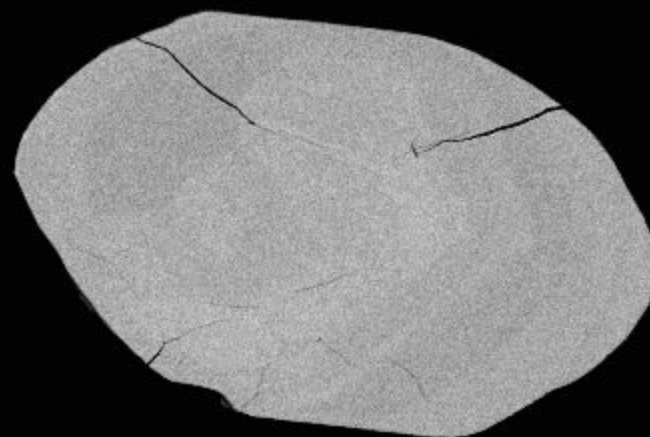
NRCan LMS GSC



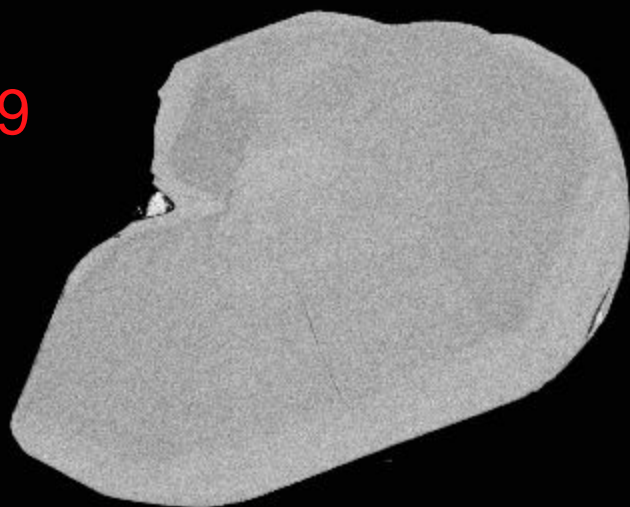
37



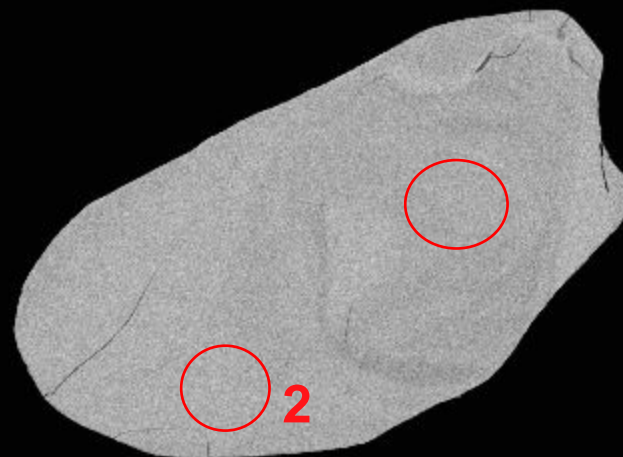
38



39



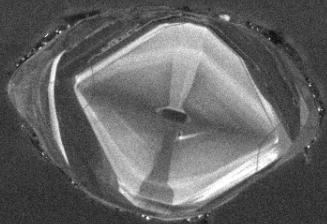
40



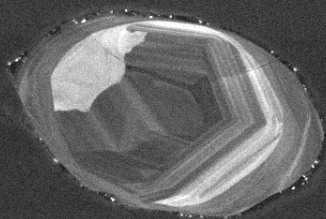
2

100µm

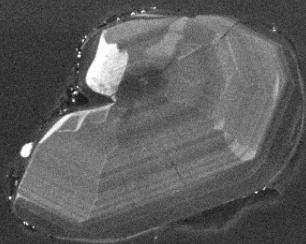
37



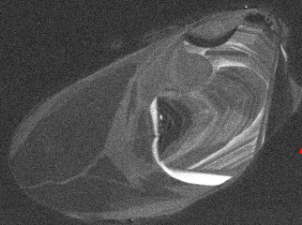
38



39



40



SEM HV: 10.0 kV

WD: 16.34 mm

SEM MAG: 786 x

Det: CL

100  $\mu$ m

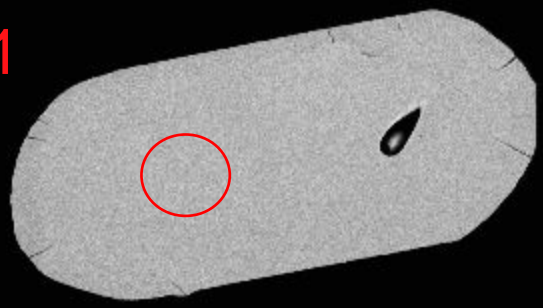
MIRA3 TESCAN

12521-10-cl

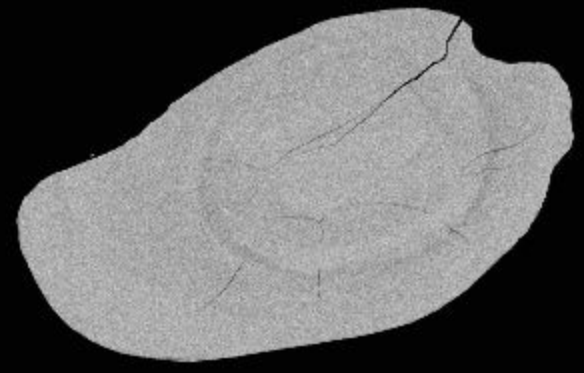
NRCan LMS GSC



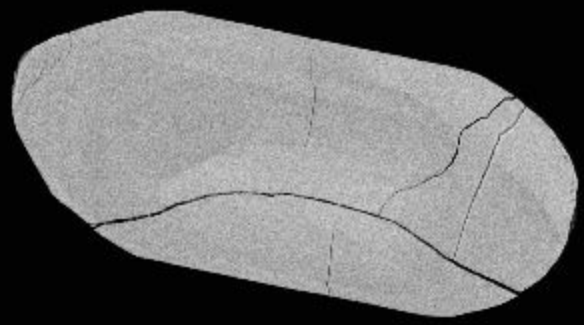
41



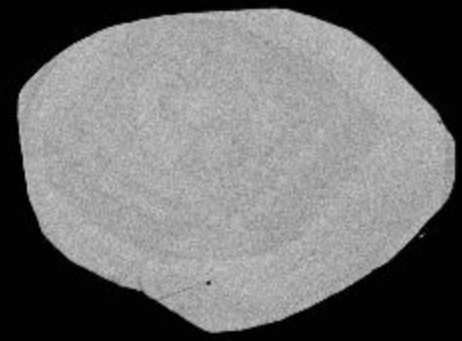
42



43



44

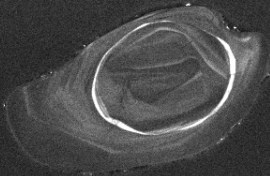




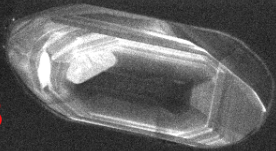
41



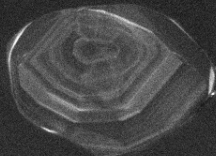
42



43



44



SEM HV: 10.0 kV

WD: 16.34 mm

SEM MAG: 696 x

Det: CL



100  $\mu$ m

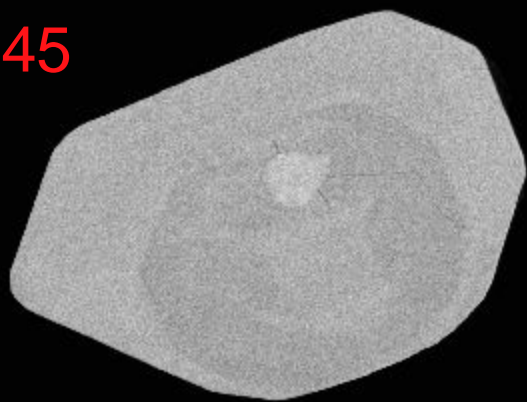
MIRA3 TESCAN

12521-11-cl

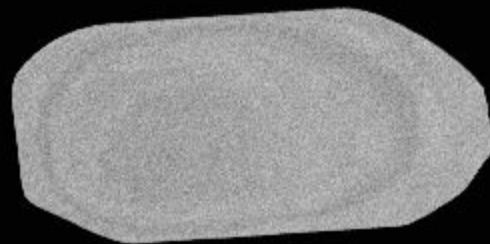
NRCan LMS GSC



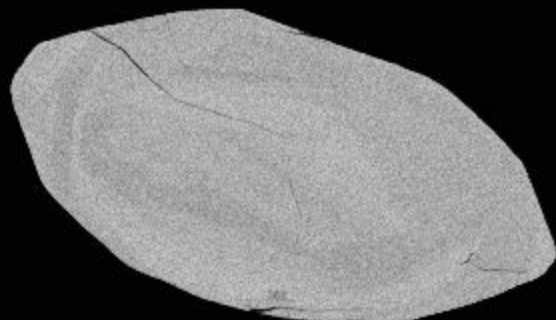
45



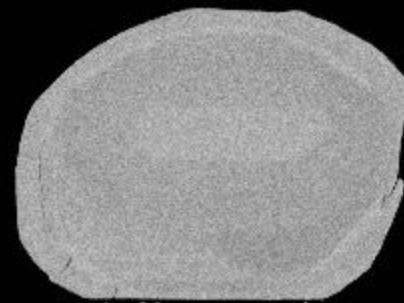
46



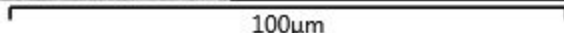
47



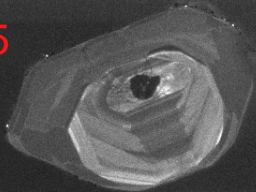
48



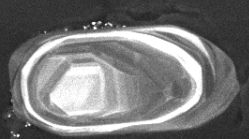
100µm



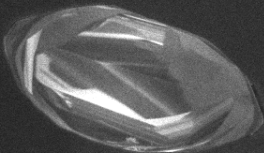
45



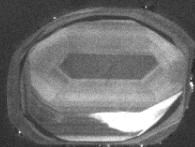
46



47



48



SEM HV: 10.0 kV

WD: 16.34 mm

SEM MAG: 750 x

Det: CL

100  $\mu$ m

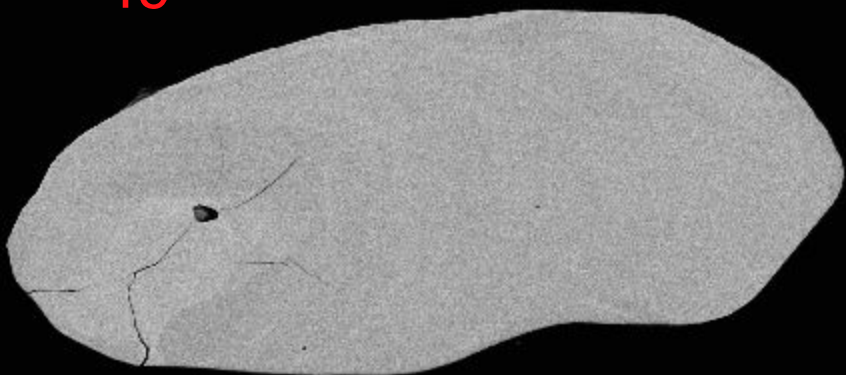
MIRA3 TESCAN

12521-12-cl

NRCan LMS GSC



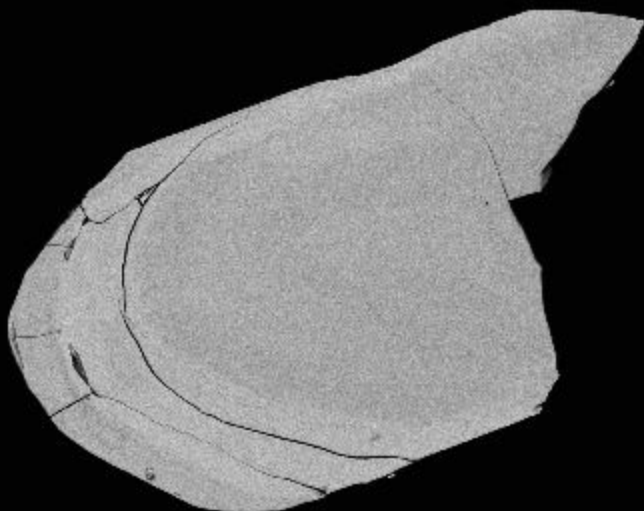
49



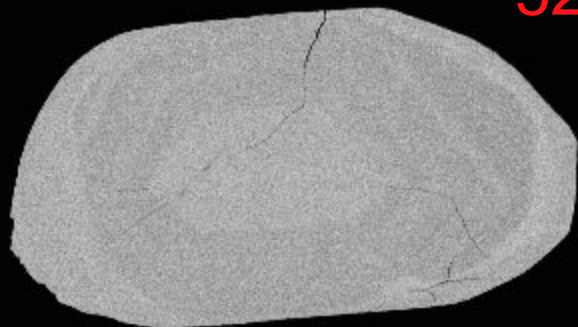
50



51

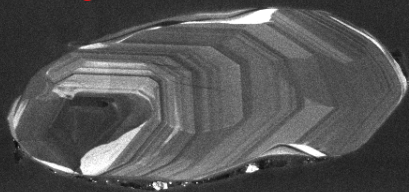


52

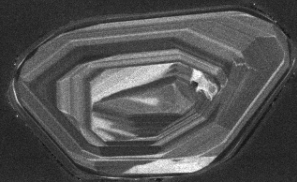




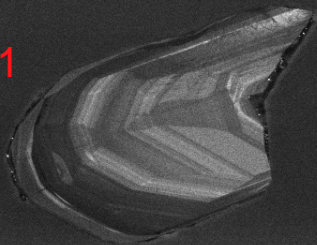
49



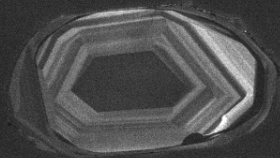
50



51



52



SEM HV: 10.0 kV

WD: 16.34 mm

SEM MAG: 528 x

Det: CL



100  $\mu$ m

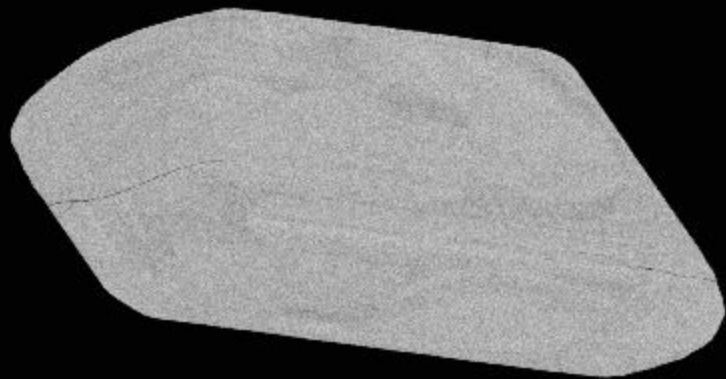
MIRA3 TESCAN

12521-13-cl

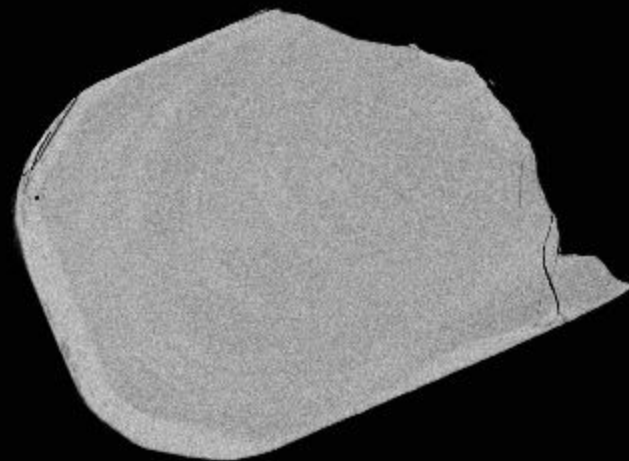
NRCan LMS GSC



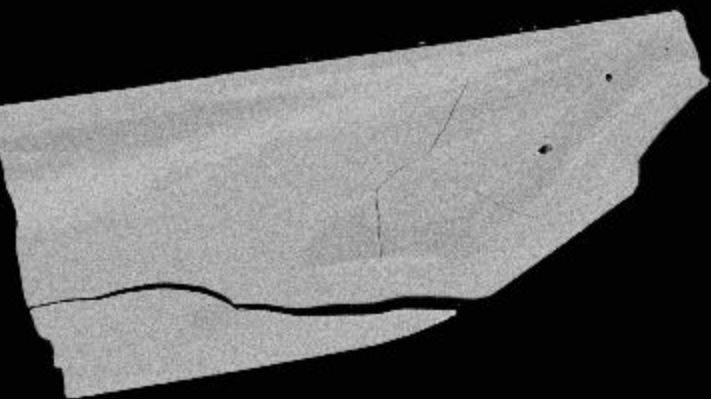
53



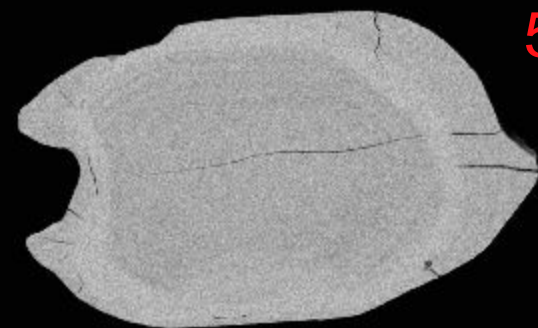
54



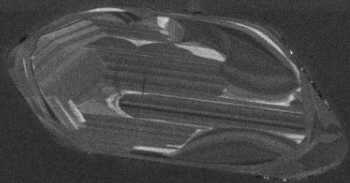
55



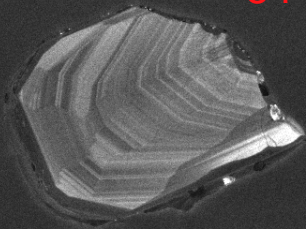
56



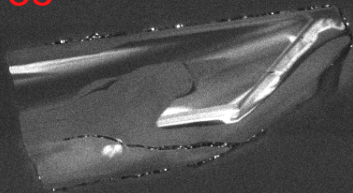
53



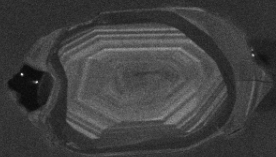
54



55



56



SEM HV: 10.0 kV

WD: 16.34 mm

SEM MAG: 666 x

Det: CL



100  $\mu$ m

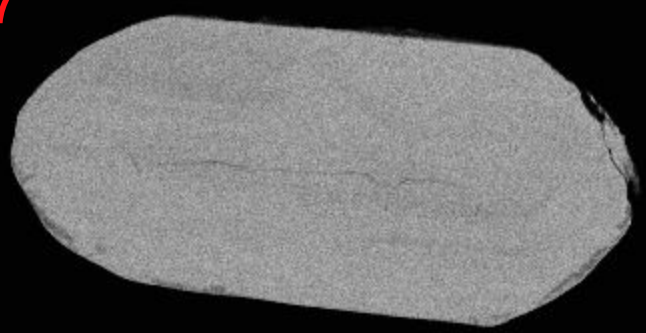
MIRA3 TESCAN

12521-14-cl

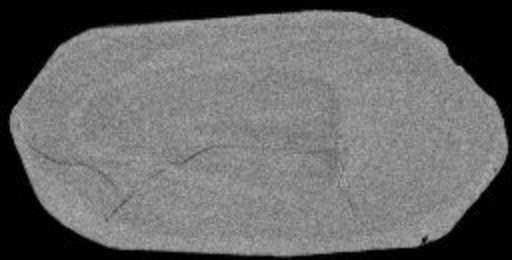
NRCan LMS GSC



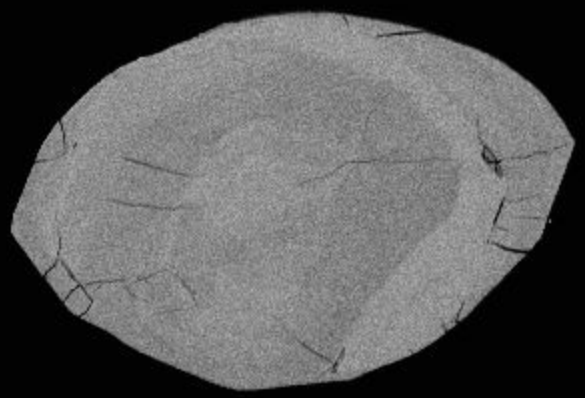
57



58



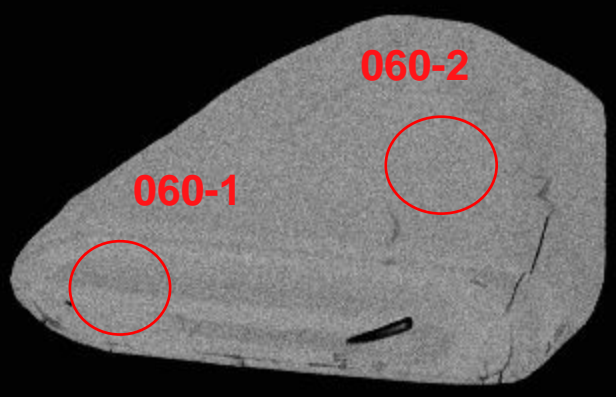
59



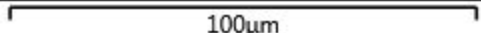
060-2

060-1

60



100µm

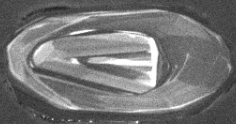




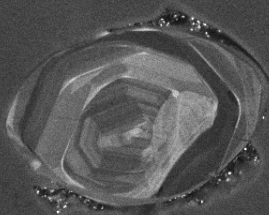
57



58



59



60



SEM HV: 10.0 kV

WD: 16.31 mm

SEM MAG: 629 x

Det: CL



100  $\mu$ m

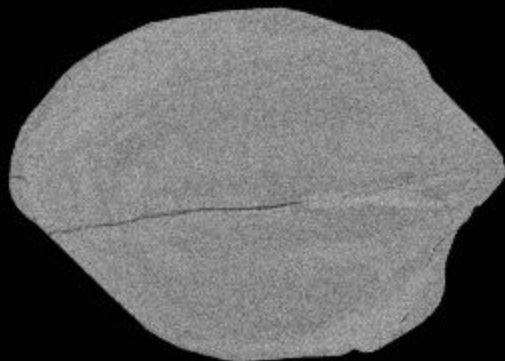
MIRA3 TESCAN

12521-15-cl

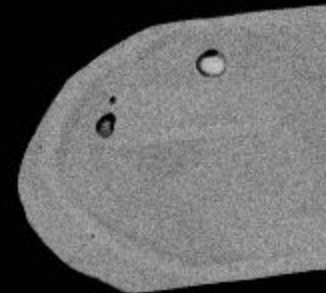
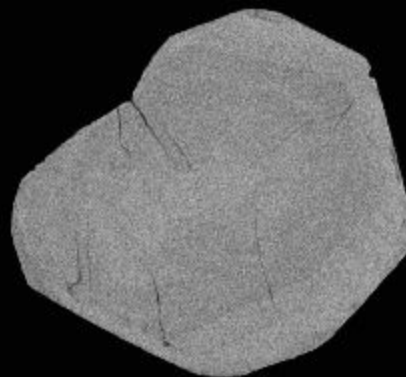
NRCan LMS GSC



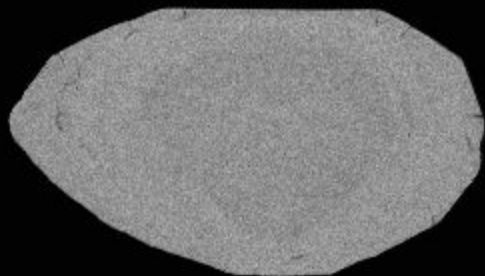
61



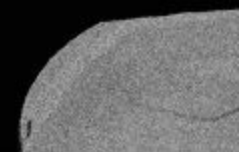
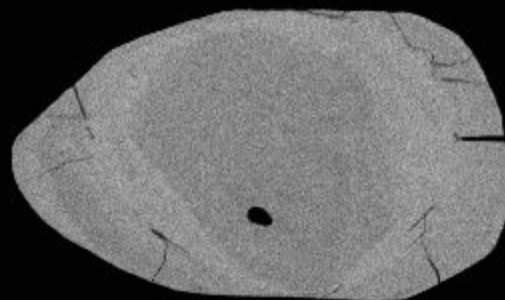
62



63

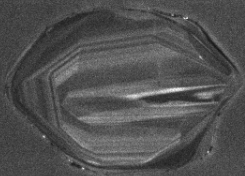


64

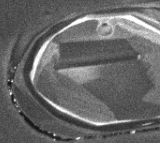
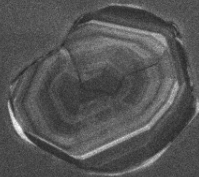


100µm

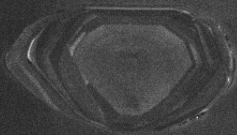
61



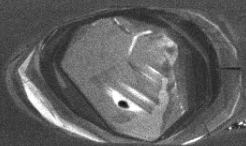
62



63



64



SEM HV: 10.0 kV

WD: 16.31 mm

SEM MAG: 592 x

Det: CL



100  $\mu$ m

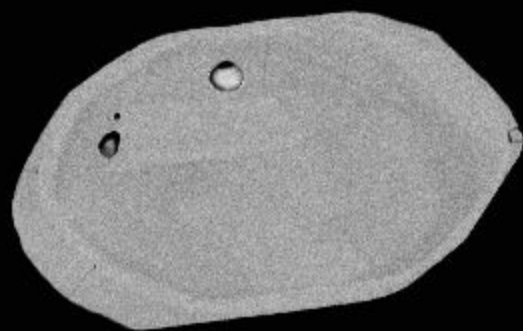
MIRA3 TESCAN

12521-16-cl

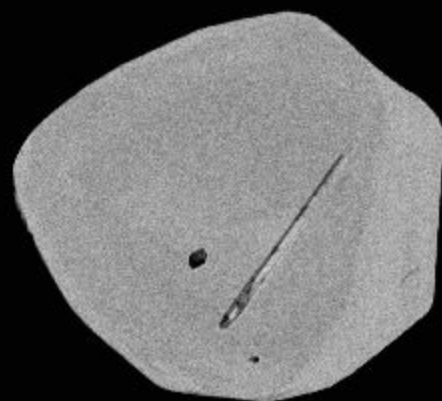
NRCan LMS GSC



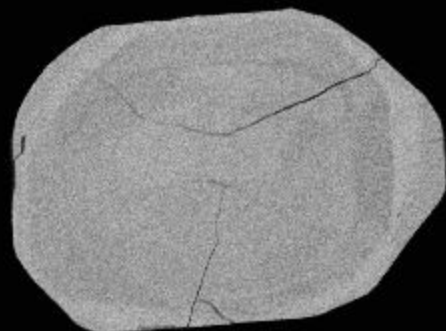
65



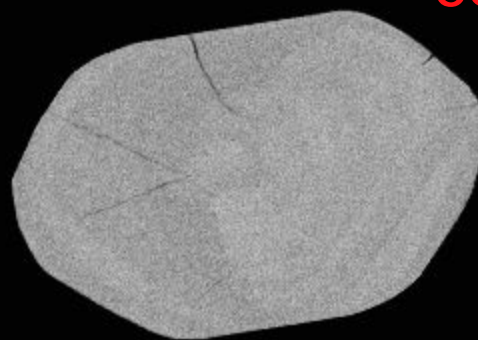
66



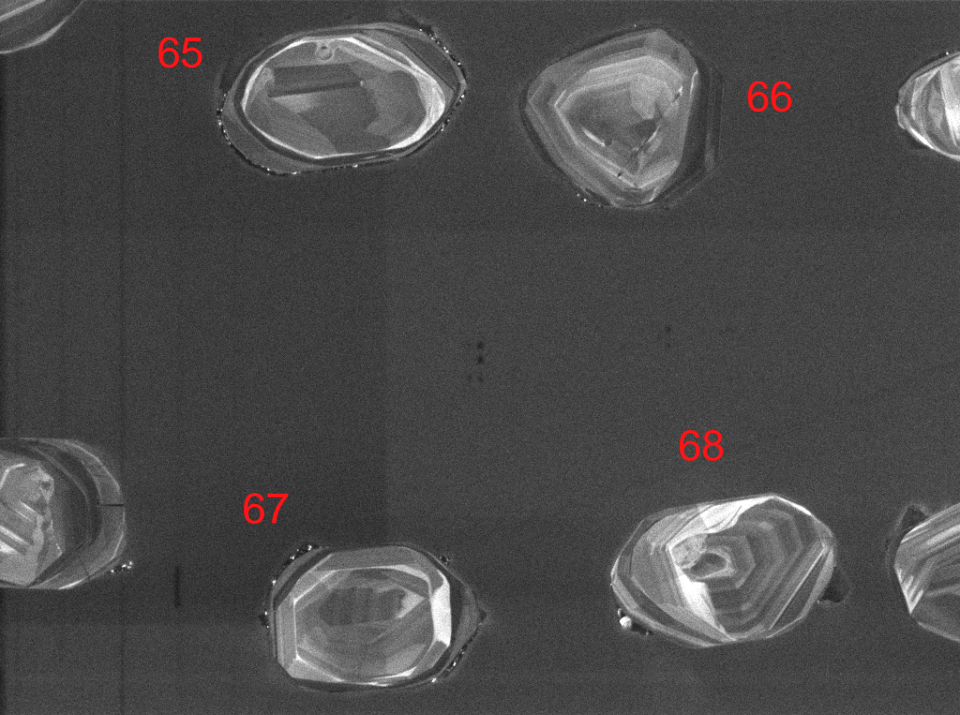
67



68







65

66

67

68

SEM HV: 10.0 kV

WD: 16.31 mm

SEM MAG: 653 x

Det: CL



100 µm

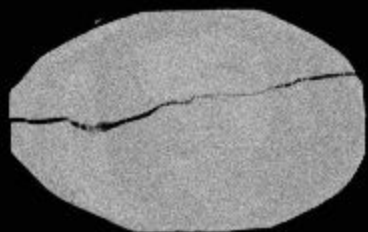
MIRA3 TESCAN

12521-17-cl

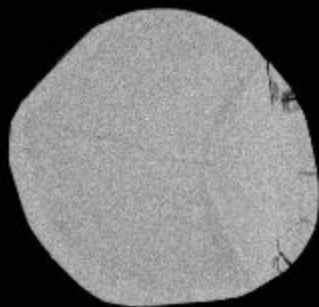
NRCan LMS GSC



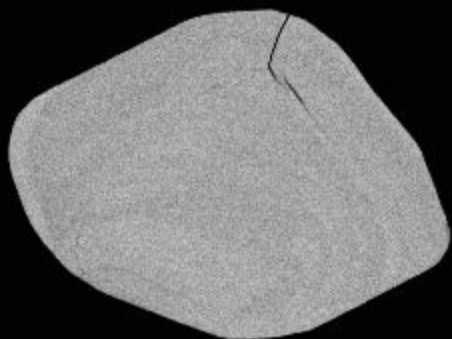
69



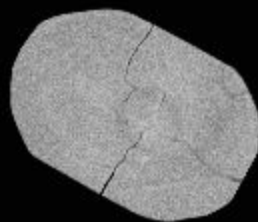
70



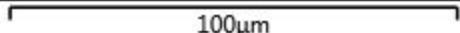
71



72



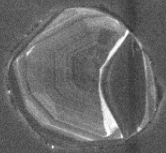
100µm



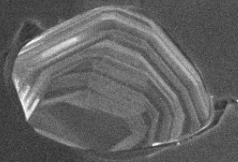
69



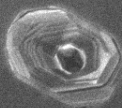
70



71



72



SEM HV: 10.0 kV

WD: 16.31 mm

SEM MAG: 603 x

Det: CL



100  $\mu$ m

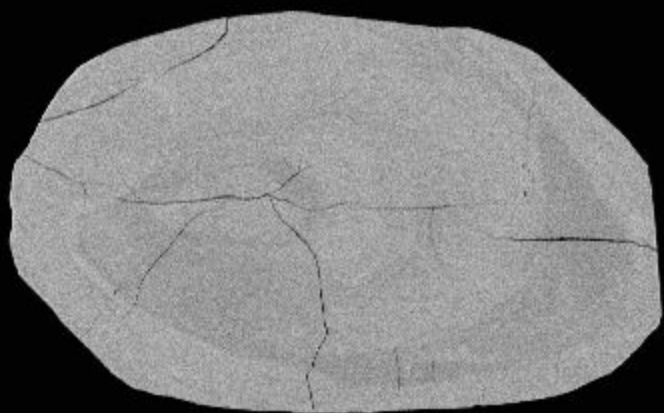
MIRA3 TESCAN

12521-18-cl

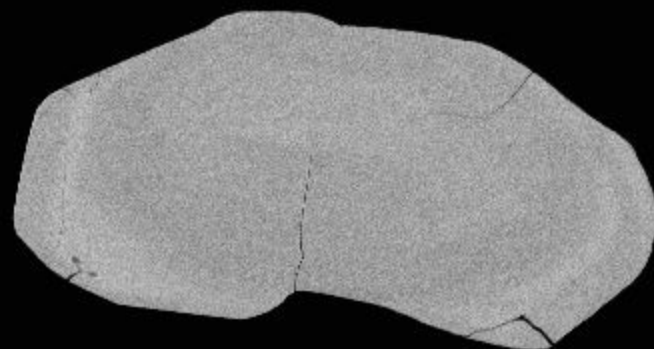
NRCan LMS GSC



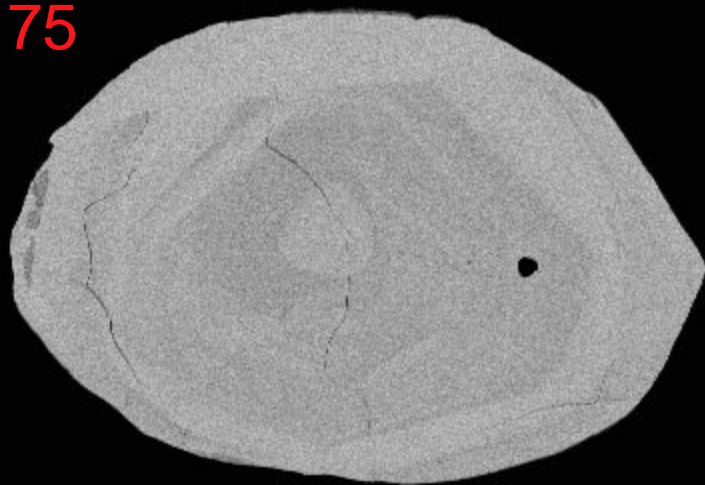
73



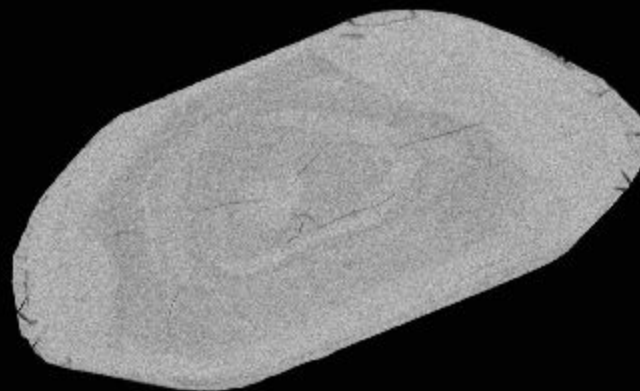
74



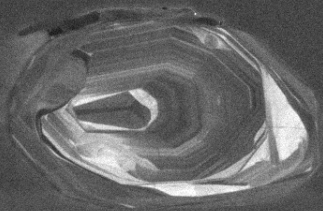
75



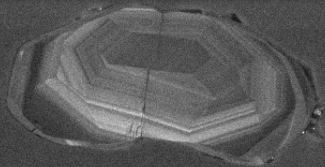
76



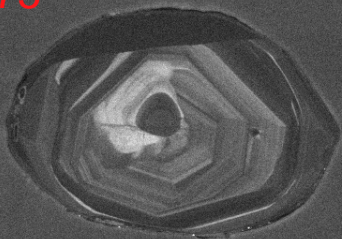
73



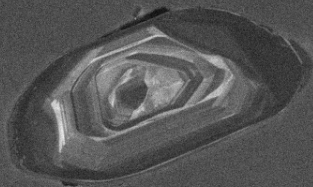
74



75



76



SEM HV: 10.0 kV

WD: 16.31 mm

SEM MAG: 573 x

Det: CL



100  $\mu$ m

MIRA3 TESCAN

12521-19-cl

NRCan LMS GSC





77

077-1

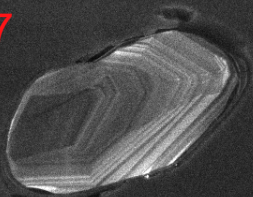


78

79

80

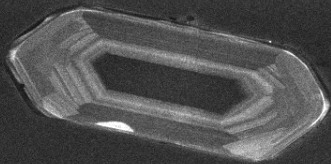
77



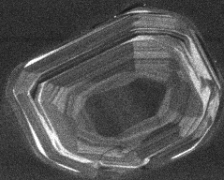
78



79



80



SEM HV: 10.0 kV

WD: 16.31 mm

SEM MAG: 600 x

Det: CL



100  $\mu$ m

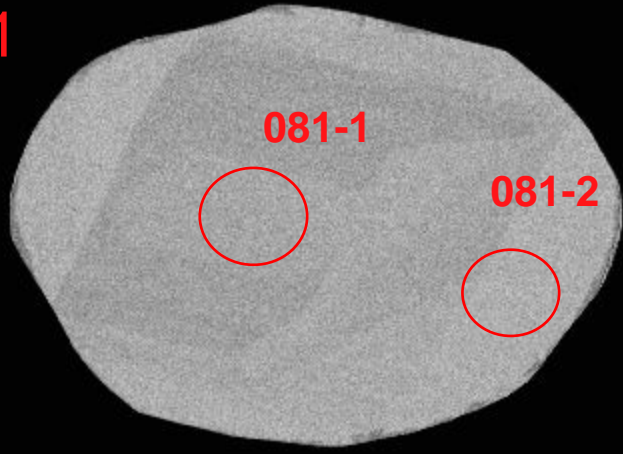
MIRA3 TESCAN

12521-20-cl

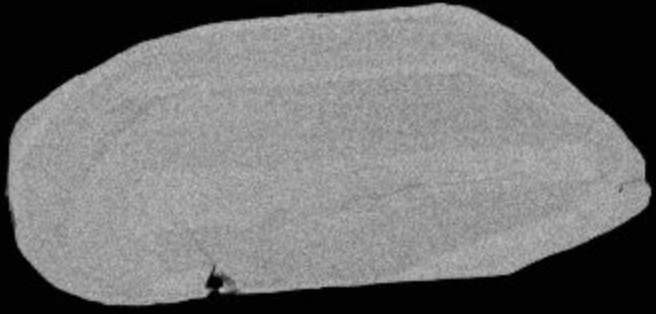
NRCan LMS GSC



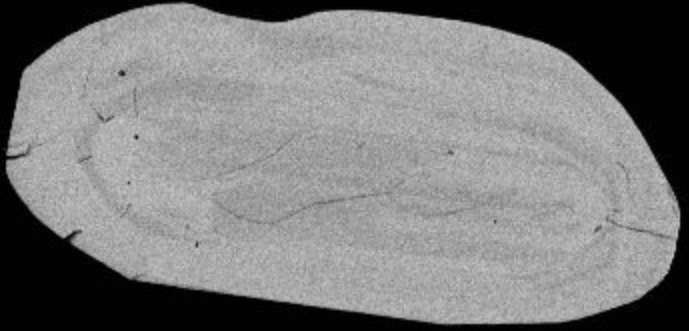
81



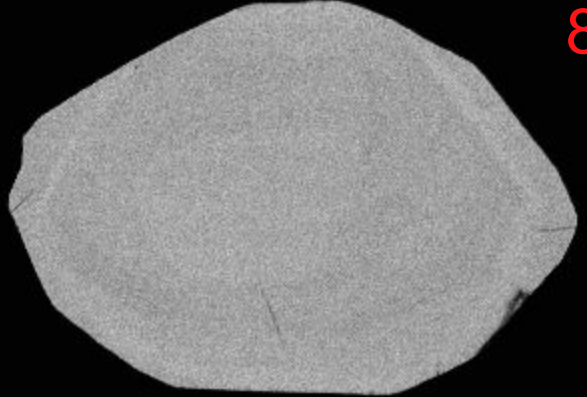
82



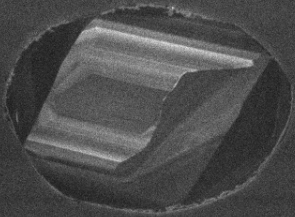
83



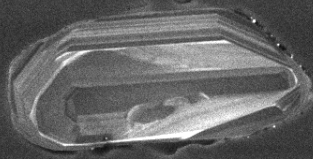
84



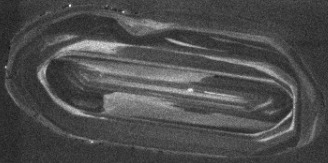
81



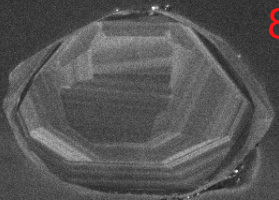
82



83



84



SEM HV: 10.0 kV

WD: 16.31 mm



MIRA3 TESCAN

SEM MAG: 679 x

Det: CL

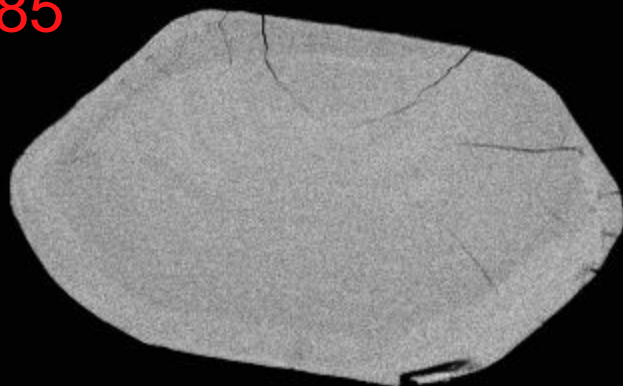
100  $\mu$ m

12521-21-cl

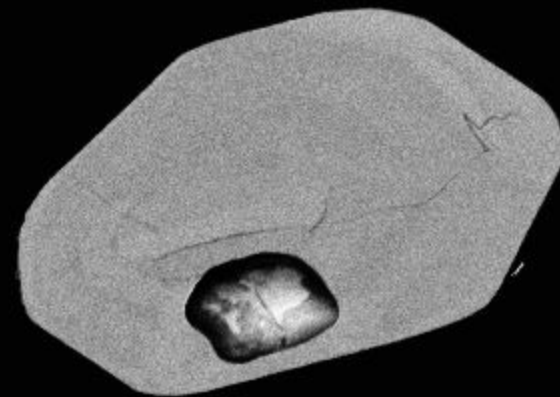
NRCan LMS GSC



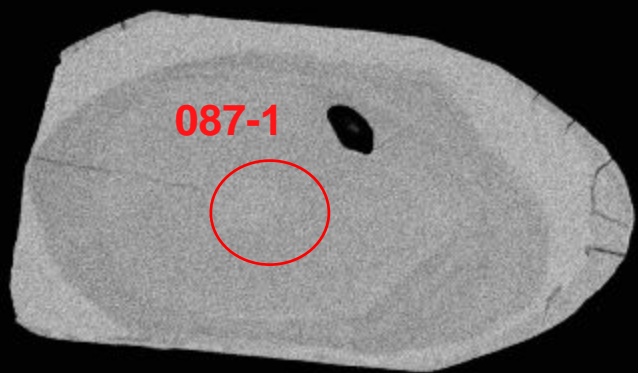
85



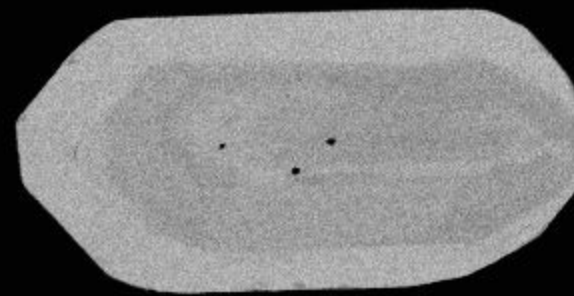
86



87

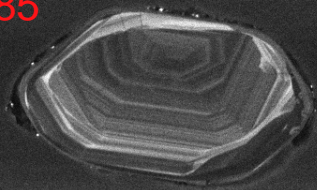


88

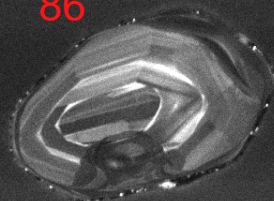




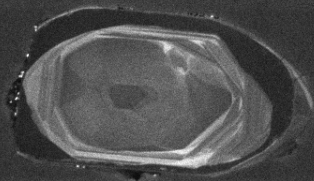
85



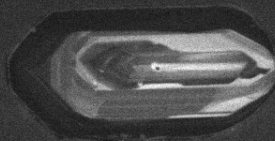
86



87



88



SEM HV: 10.0 kV

WD: 16.31 mm

SEM MAG: 753 x

Det: CL



100  $\mu$ m

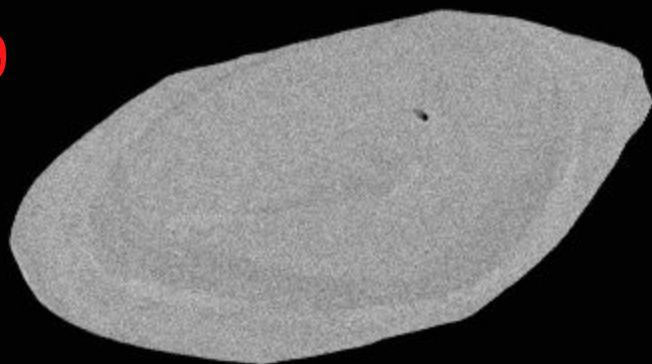
MIRA3 TESCAN

12521-22-cl

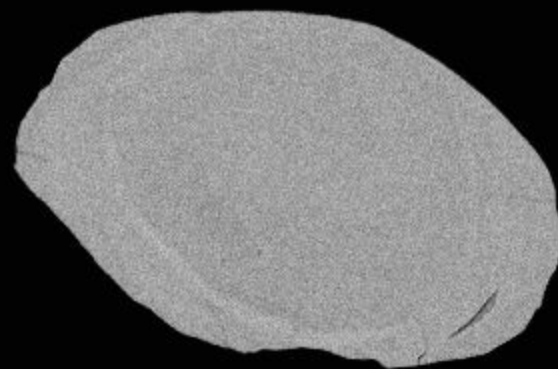
NRCan LMS GSC



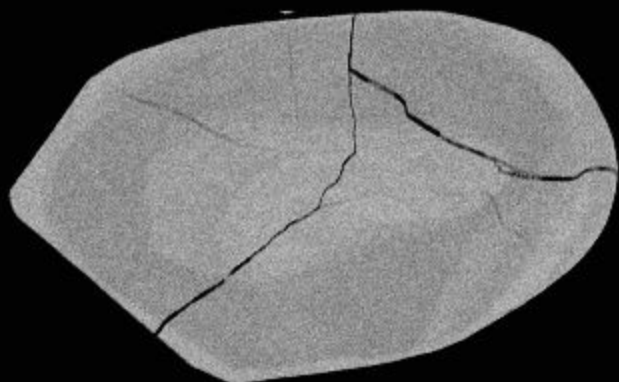
89



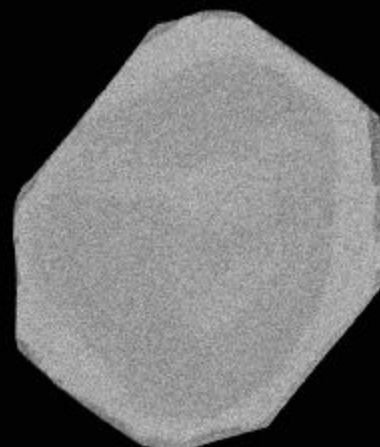
90



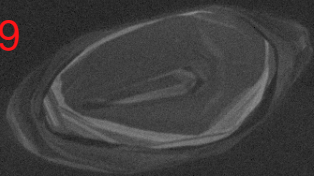
91



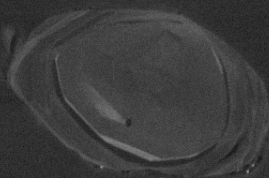
92



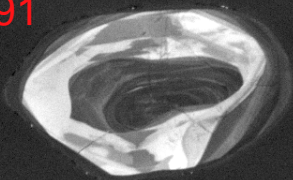
89



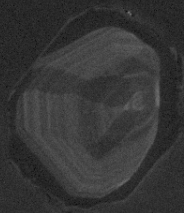
90



91



92



SEM HV: 10.0 kV

WD: 16.31 mm

SEM MAG: 796 x

Det: CL

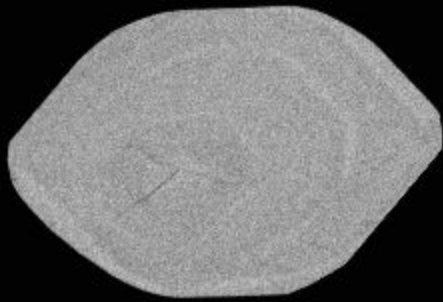
100  $\mu$ m

MIRA3 TESCAN

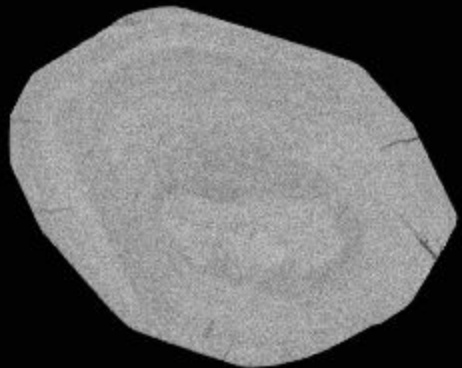
12521-23-cl

NRCan LMS GSC



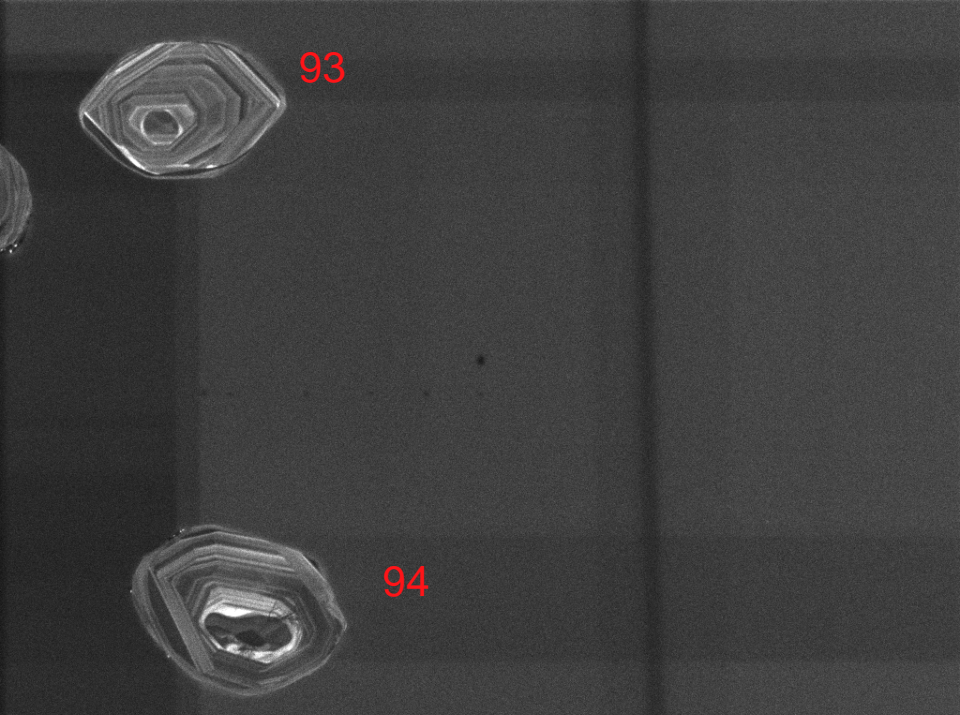


93



94

100µm



93

94

SEM HV: 10.0 kV

WD: 16.31 mm

SEM MAG: 715 x

Det: CL



100 µm

MIRA3 TESCAN

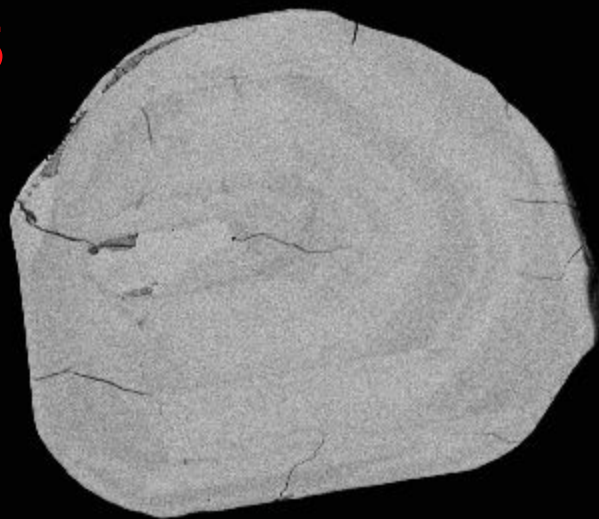
12521-24-cl

NRCan LMS GSC

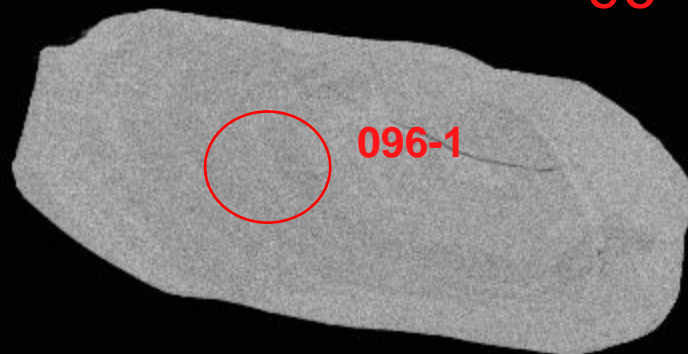




95

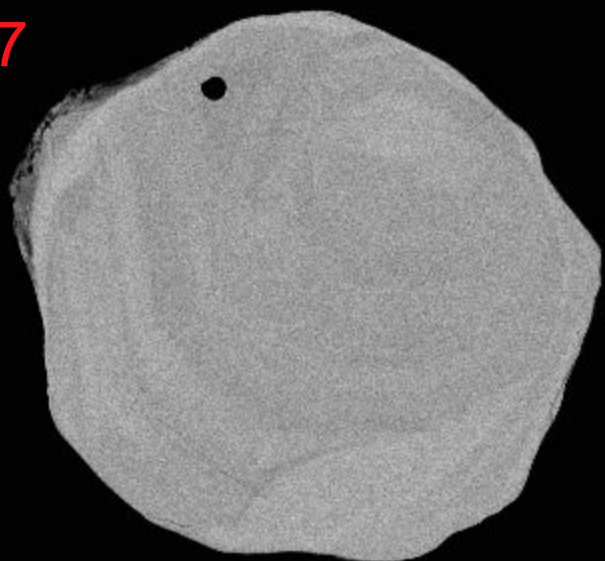


96

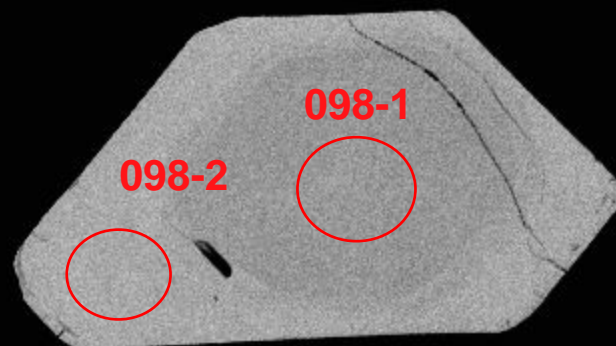


096-1

97



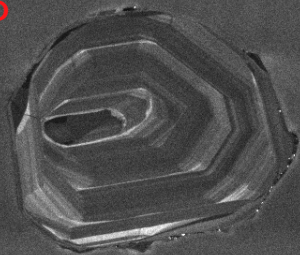
98



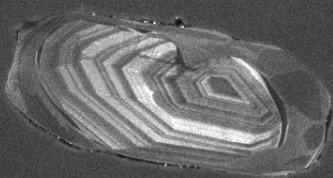
098-1

098-2

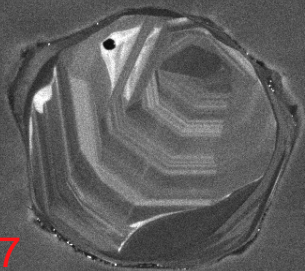
95



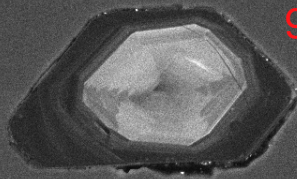
96



97



98



SEM HV: 10.0 kV

WD: 16.31 mm

SEM MAG: 556 x

Det: CL



100  $\mu$ m

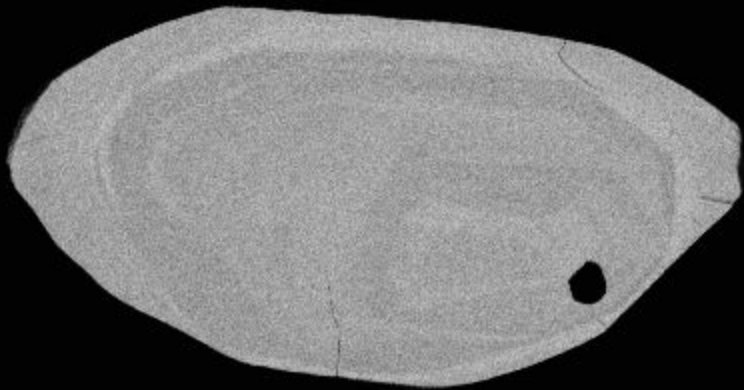
MIRA3 TESCAN

12521-25-cl

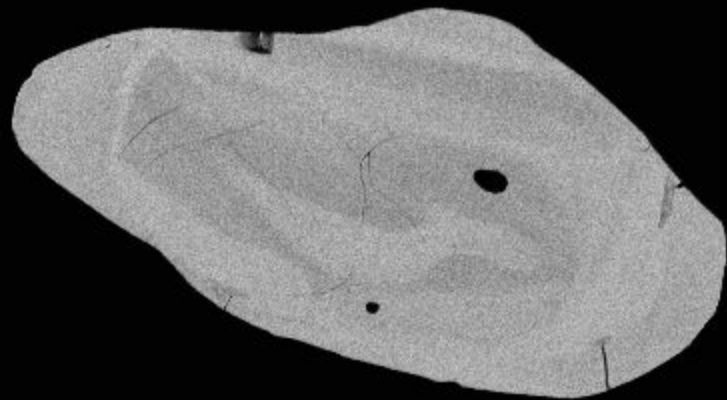
NRCan LMS GSC



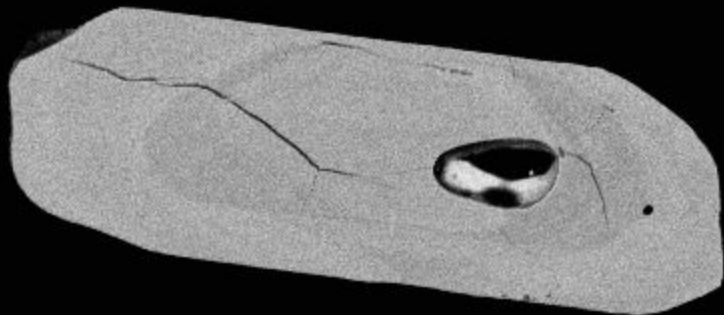
99



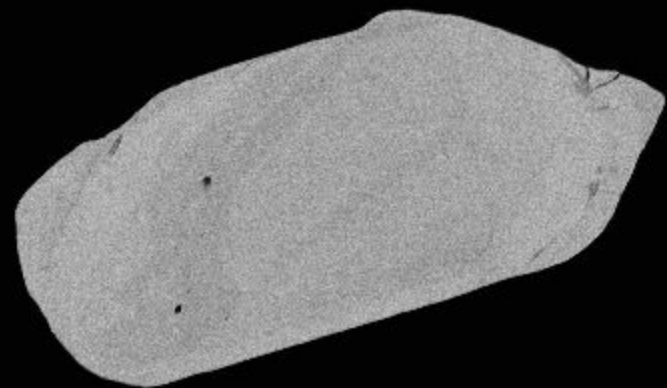
100



101



102



99

100

101

102

SEM HV: 10.0 kV

WD: 16.31 mm

SEM MAG: 737 x

Det: CL



100  $\mu$ m

MIRA3 TESCAN

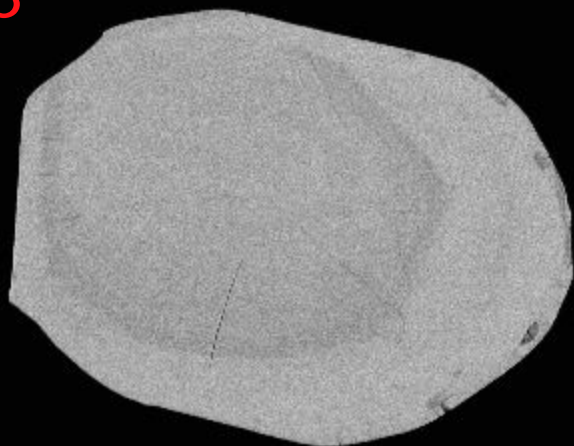
12521-26-cl

NRCan LMS GSC

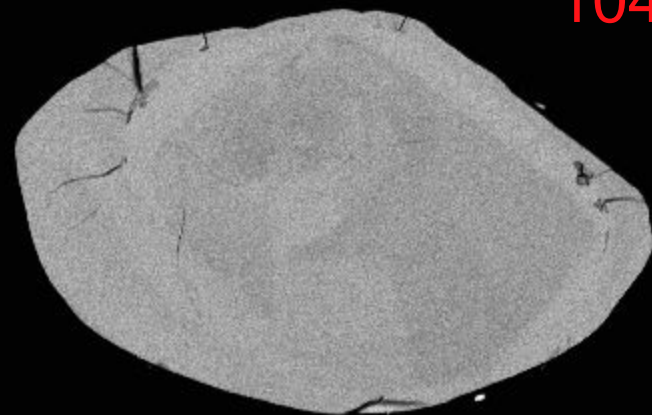




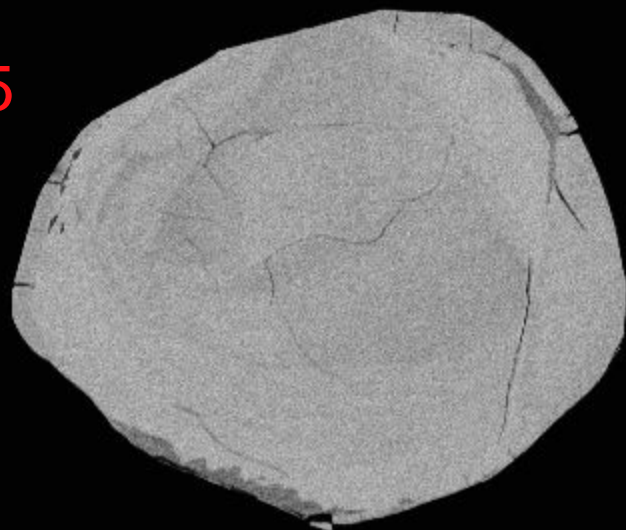
103



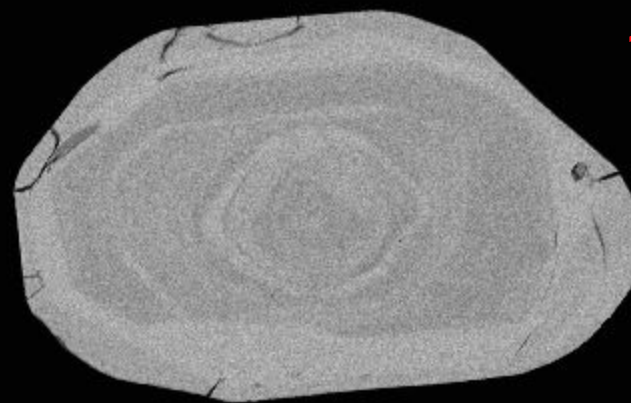
104



105



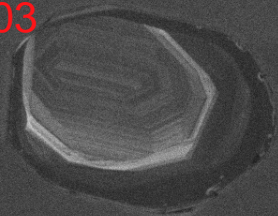
106



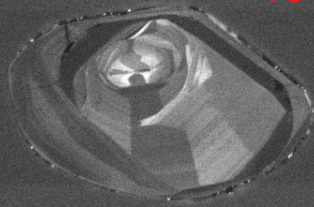
100µm



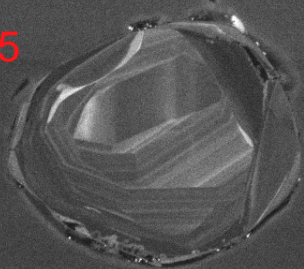
103



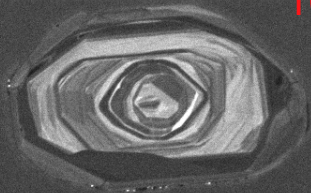
104



105



106



SEM HV: 10.0 kV

WD: 16.31 mm

SEM MAG: 737 x

Det: CL



100  $\mu$ m

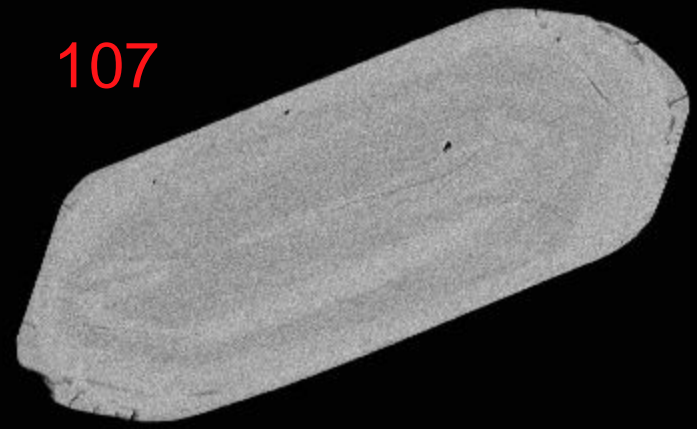
MIRA3 TESCAN

12521-27-cl

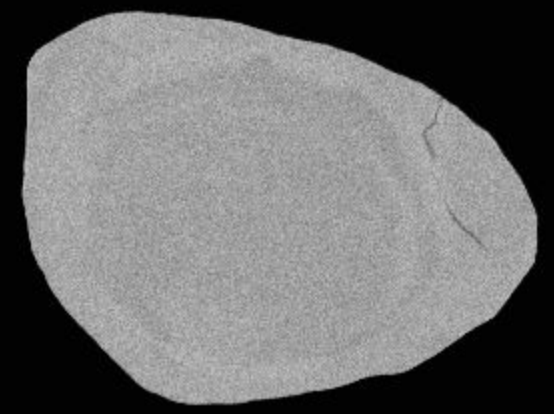
NRCan LMS GSC



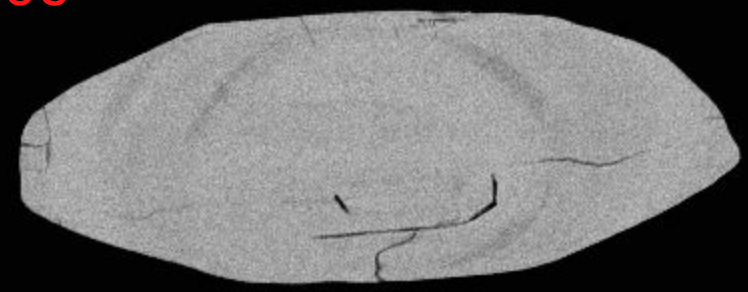
107



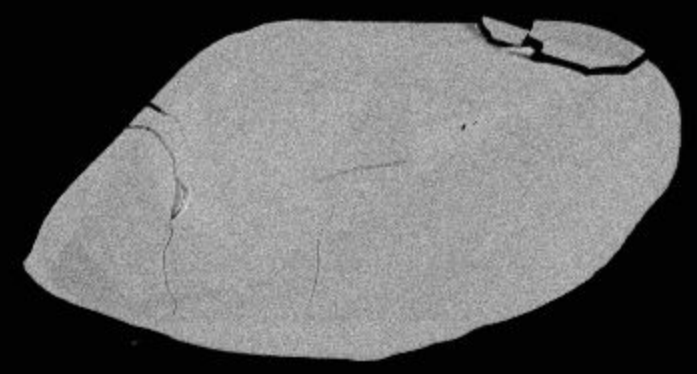
108



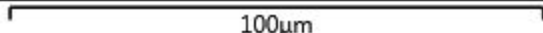
109



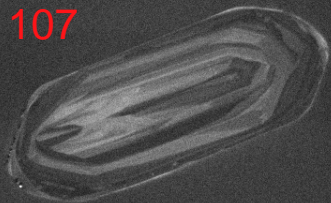
110



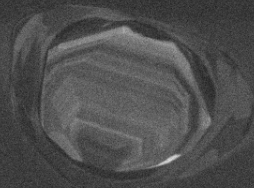
100μm



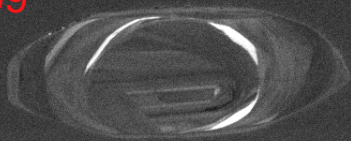
107



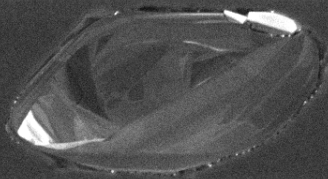
108



109



110



SEM HV: 10.0 kV

WD: 16.31 mm

SEM MAG: 719 x

Det: CL



100  $\mu$ m

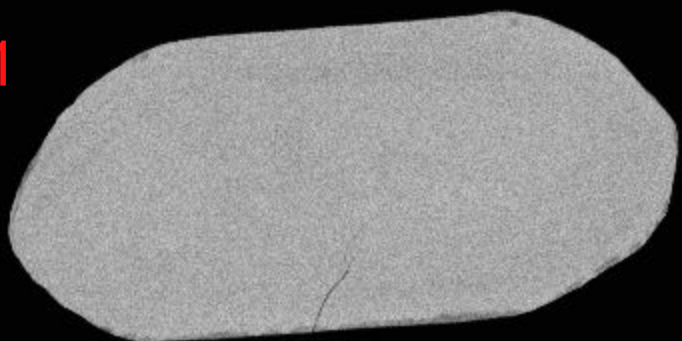
MIRA3 TESCAN

12521-28-cl

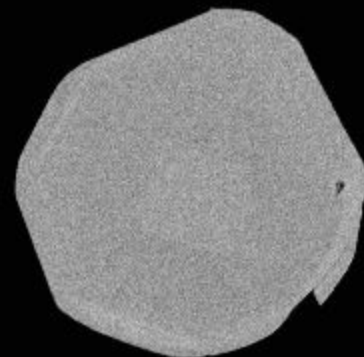
NRCan LMS GSC



111



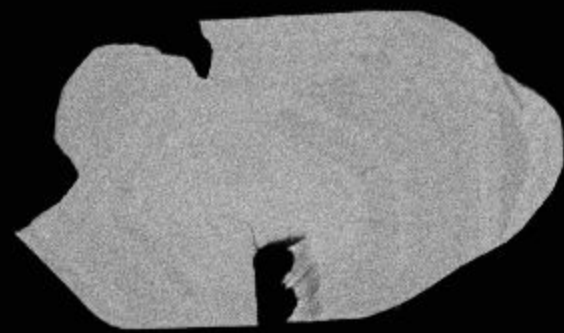
112



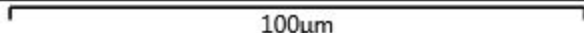
113



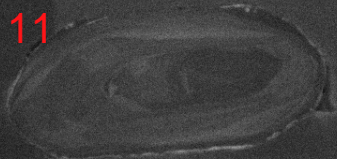
114



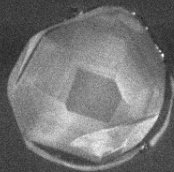
100μm



111



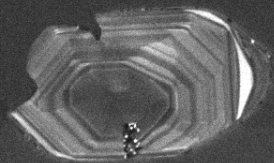
112



113



114



SEM HV: 10.0 kV

WD: 16.31 mm

SEM MAG: 775 x

Det: CL



MIRA3 TESCAN

100  $\mu$ m

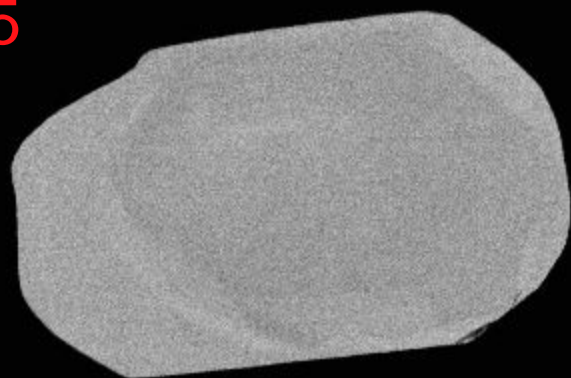
12521-29-cl

NRCan LMS GSC

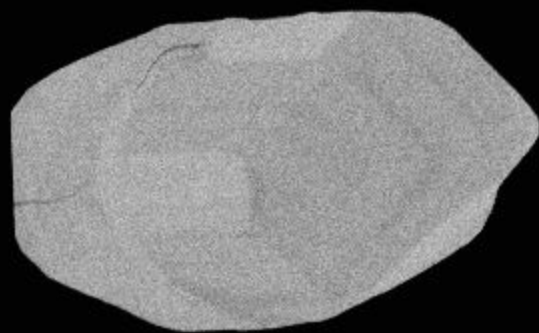




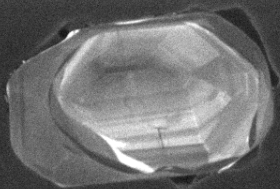
115



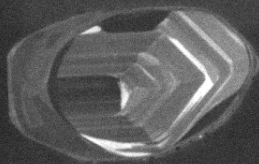
116



100µm



115



116

SEM HV: 10.0 kV

WD: 16.31 mm

SEM MAG: 922 x

Det: CL



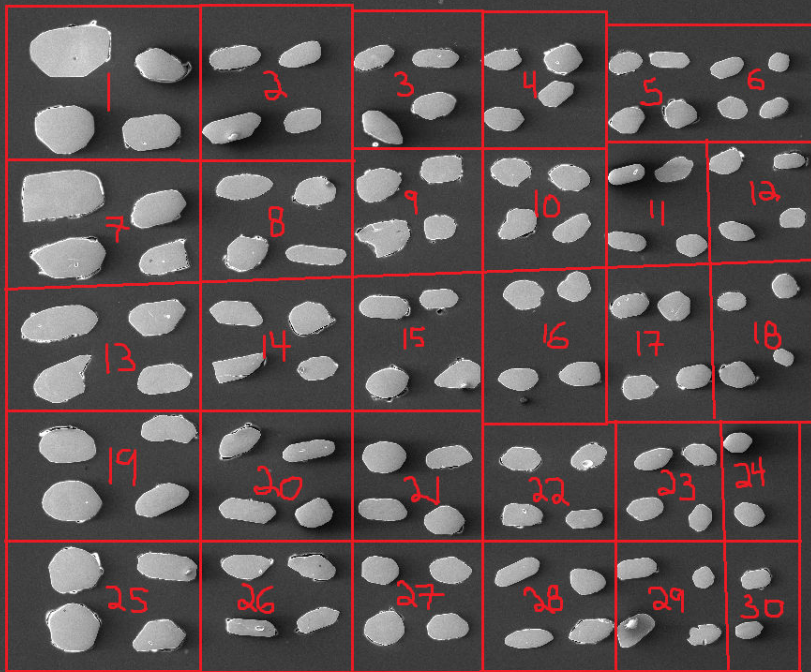
50 µm

MIRA3 TESCAN

12521-30-cl

NRCan LMS GSC





SEM HV: 20.0 kV

WD: 49.48 mm

SEM MAG: 103 x

Det: SE

500 µm

MIRA3 TESCAN

12521-map

NRCan LMS GSC