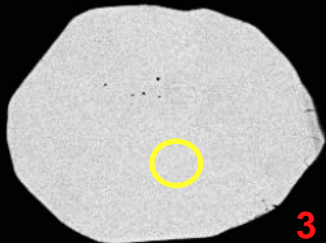


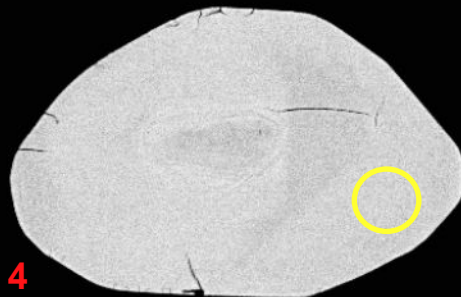
1



2

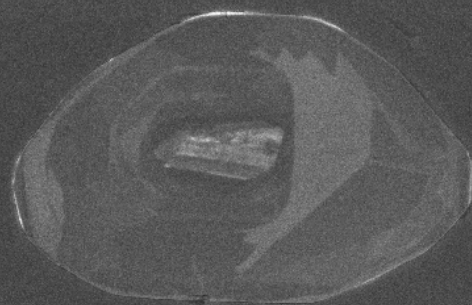
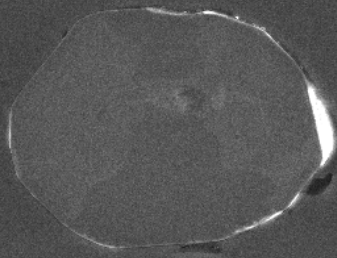


3



4

100µm



SEM HV: 10.0 kV

WD: 16.98 mm

View field: 358  $\mu$ m

SEM MAG: 773 x

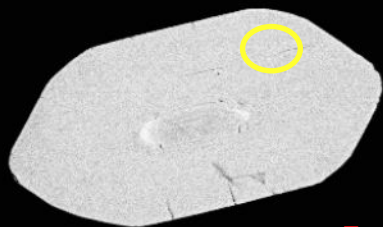
100  $\mu$ m

MIRA3 TESCAN

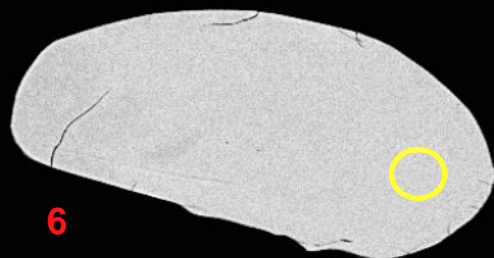
12623-01-cl

Det: CL

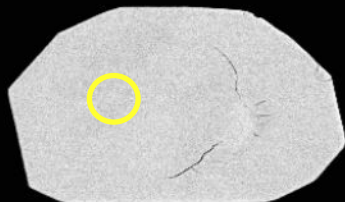
NRCan LMS GSC



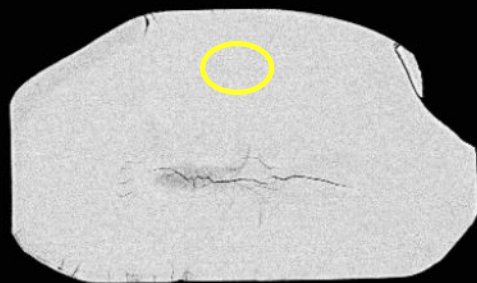
5



6

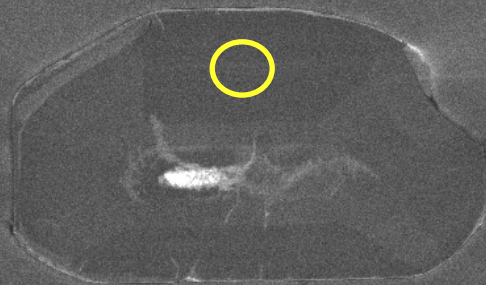
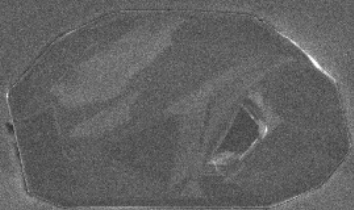


7



8

100µm



SEM HV: 10.0 kV

WD: 16.98 mm

View field: 425  $\mu\text{m}$

SEM MAG: 651 x

100  $\mu\text{m}$

MIRA3 TESCAN

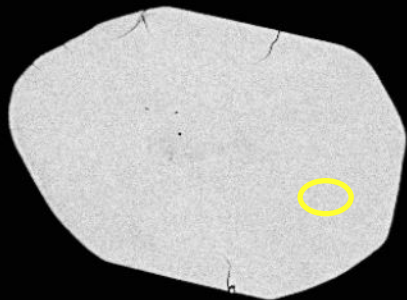
12623-02-cl

Det: CL

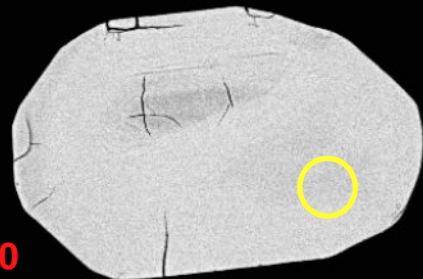
NRCan LMS GSC



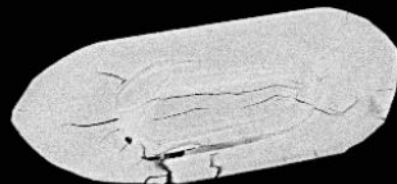




9

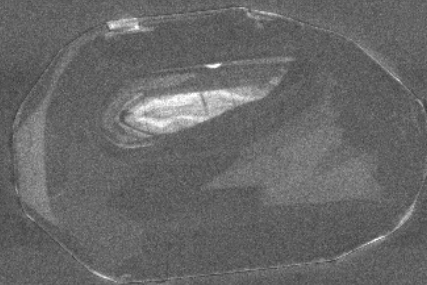
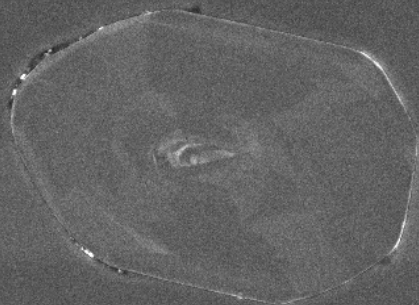


10



11

100µm



SEM HV: 10.0 kV

WD: 16.98 mm

View field: 345  $\mu\text{m}$

SEM MAG: 801 x

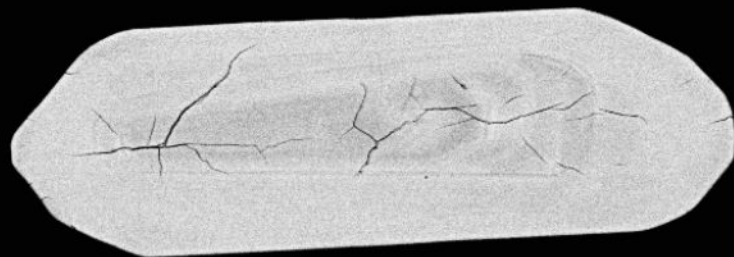
100  $\mu\text{m}$

MIRA3 TESCAN

12623-03-cl

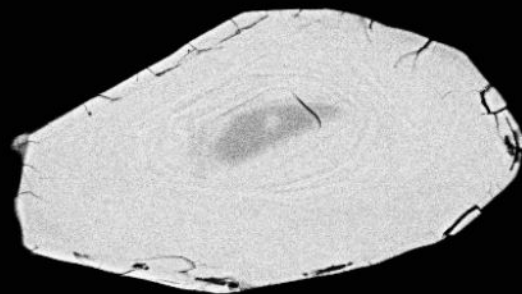
Det: CL

NRCan LMS GSC

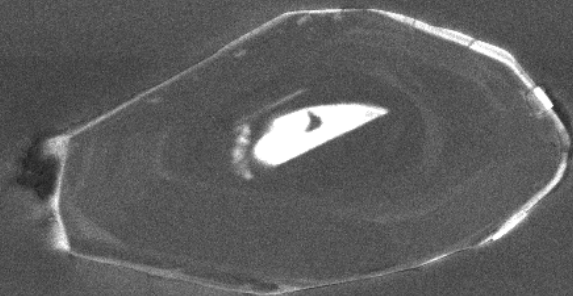
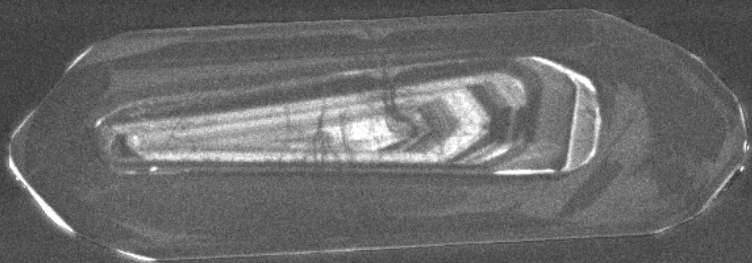


12

13



100µm



SEM HV: 10.0 kV

WD: 16.98 mm

View field: 262  $\mu\text{m}$

SEM MAG: 1.06 kx

50  $\mu\text{m}$

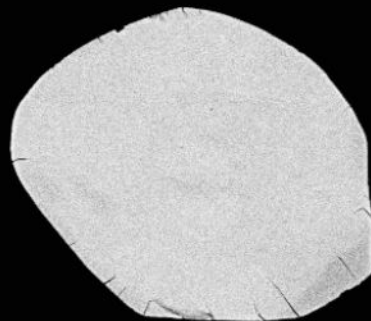
12623-04-cl

Det: CL

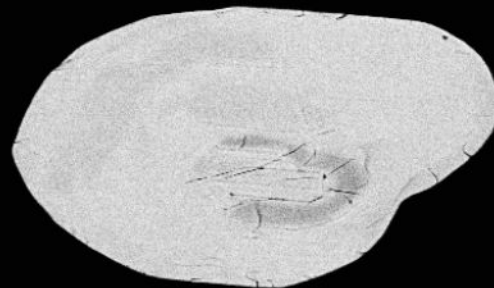
MIRA3 TESCAN

NRCan LMS GSC

14

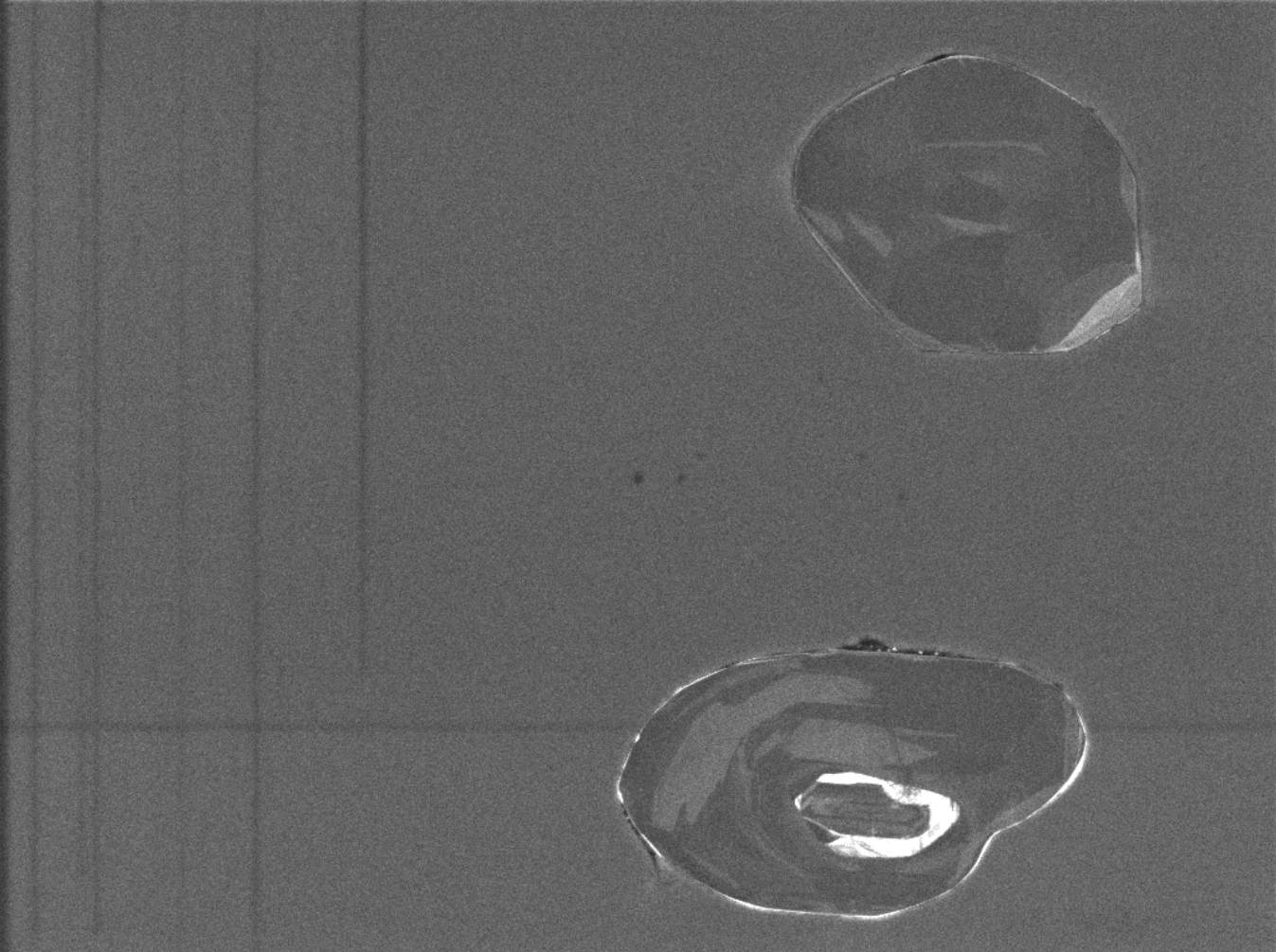


15



100µm





SEM HV: 10.0 kV

WD: 16.98 mm

View field: 384  $\mu\text{m}$

SEM MAG: 721 x

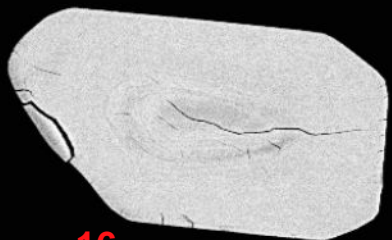
100  $\mu\text{m}$

12623-05-cl

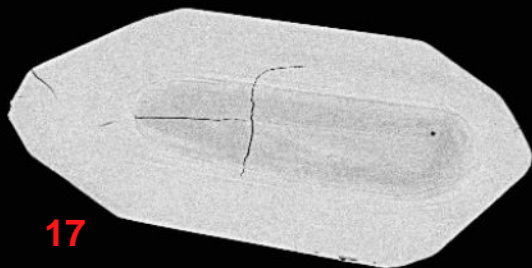
Det: CL

MIRA3 TESCAN

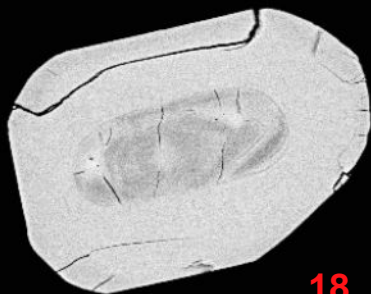
NRCan LMS GSC



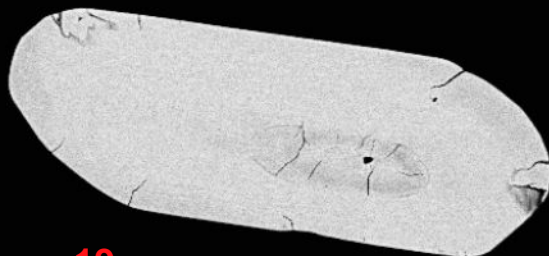
16



17

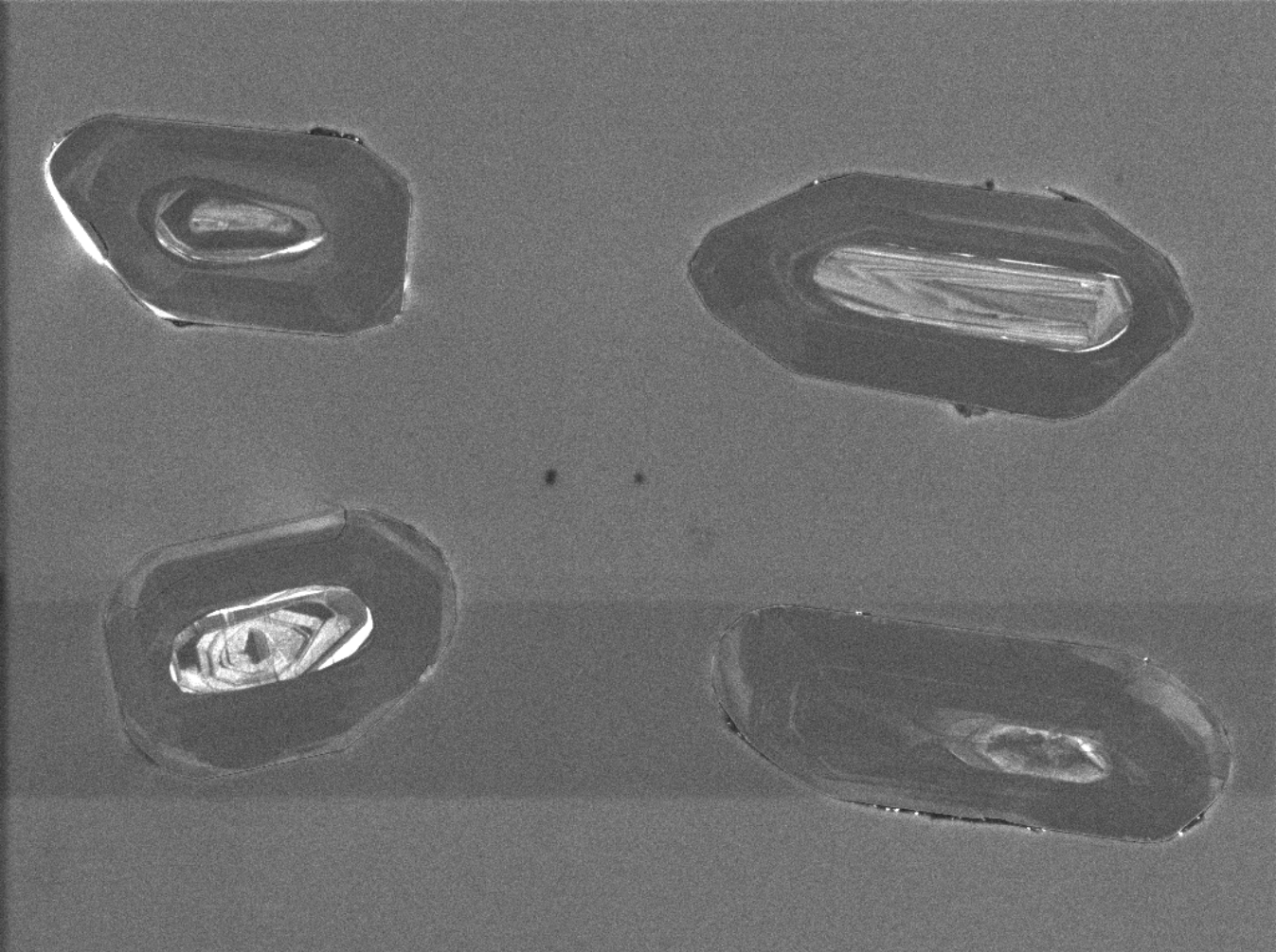


18



19

100μm



SEM HV: 10.0 kV

WD: 16.98 mm

View field: 397  $\mu\text{m}$

SEM MAG: 698 x

100  $\mu\text{m}$

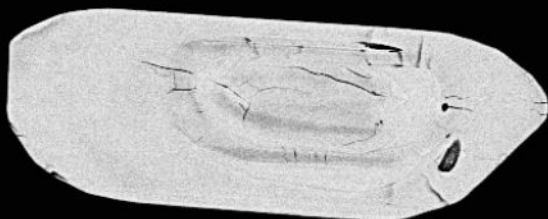
MIRA3 TESCAN

12623-06-cl

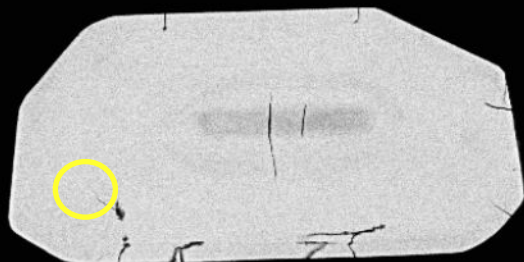
Det: CL

NRCan LMS GSC

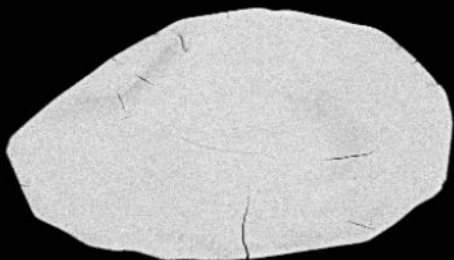




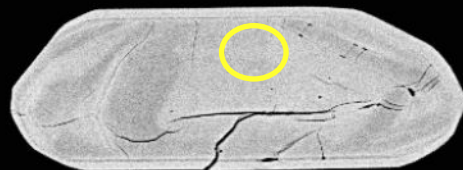
20



21

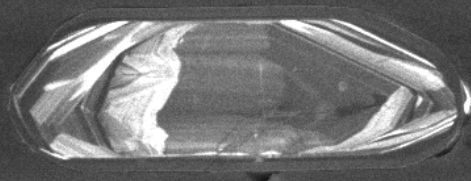
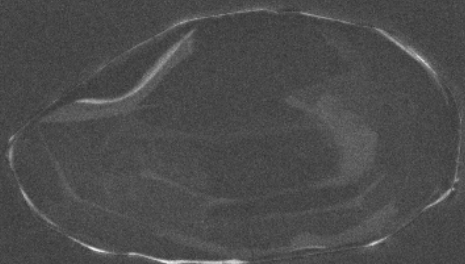
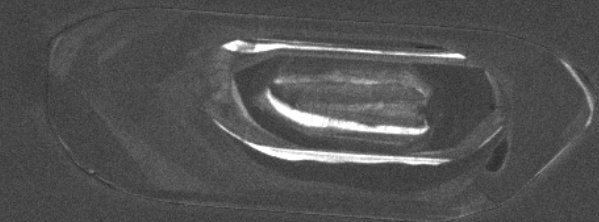


22



23

100µm



SEM HV: 10.0 kV

WD: 16.98 mm

View field: 352  $\mu$ m

SEM MAG: 786 x

100  $\mu$ m

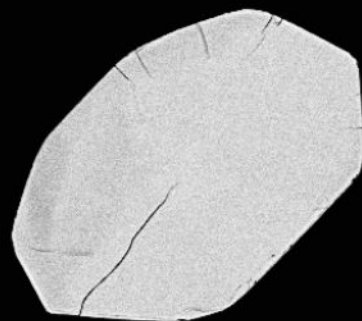
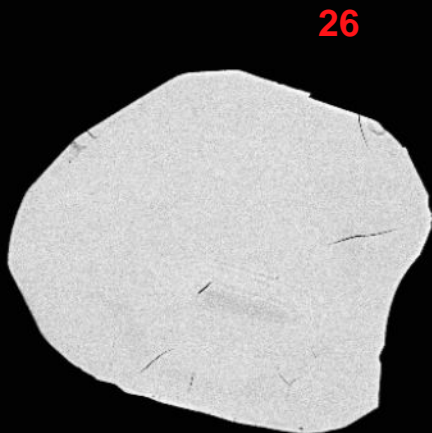
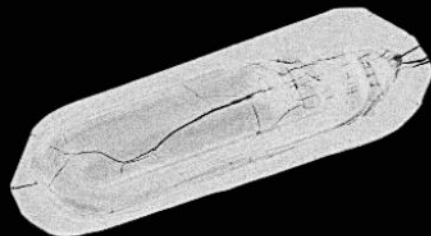
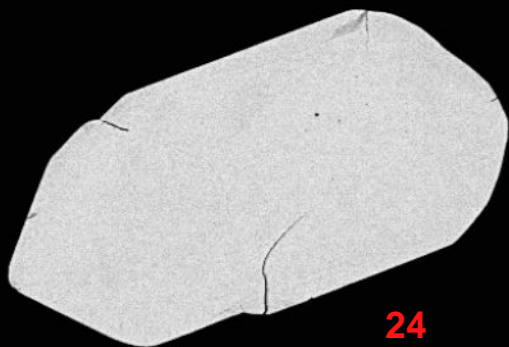
MIRA3 TESCAN

12623-07-cl

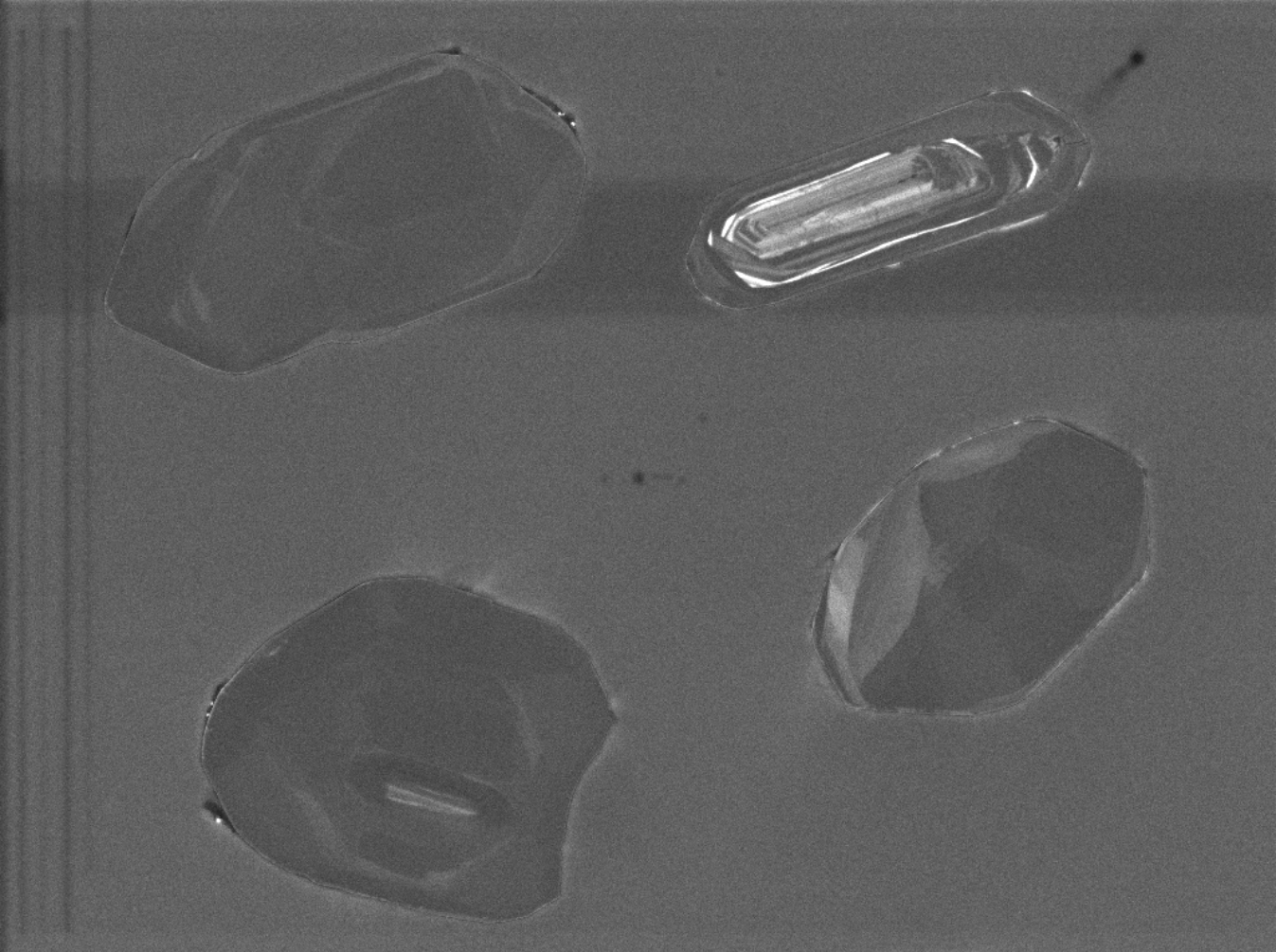
Det: CL

NRCan LMS GSC





100µm



SEM HV: 10.0 kV

WD: 16.98 mm

View field: 370  $\mu\text{m}$

SEM MAG: 748 x

100  $\mu\text{m}$

MIRA3 TESCAN

12623-08-cl

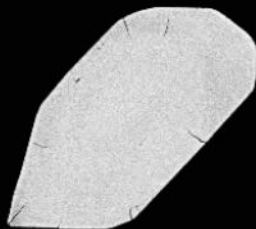
Det: CL

NRCan LMS GSC

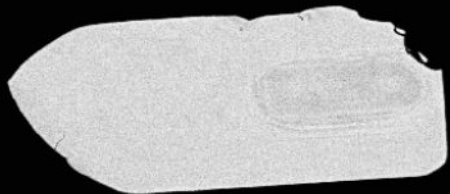




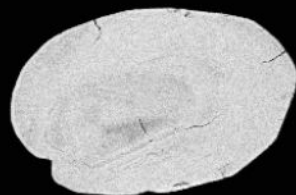
28



29

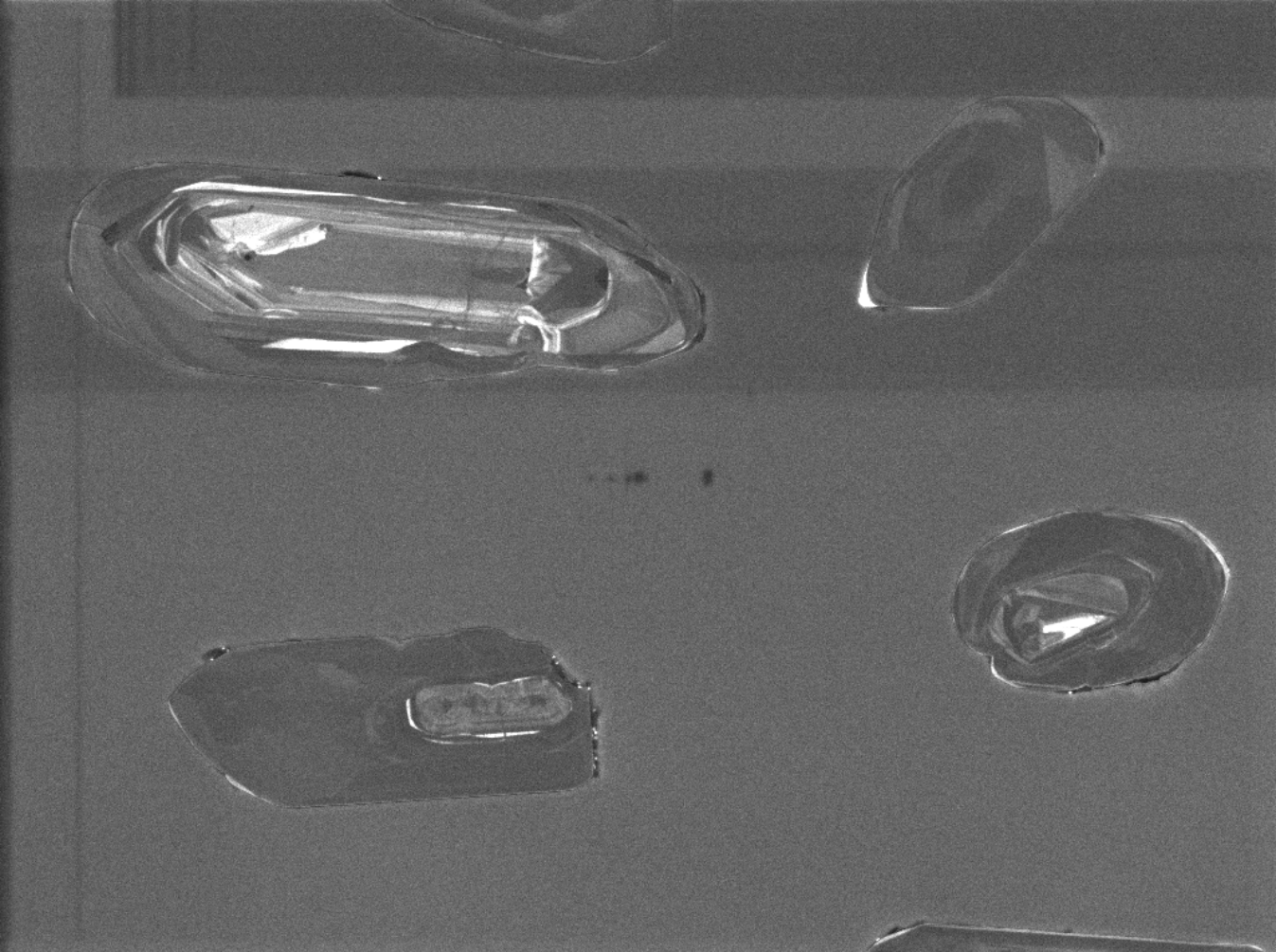


30



31

100µm



SEM HV: 10.0 kV

WD: 16.98 mm

View field: 383  $\mu$ m

SEM MAG: 722 x

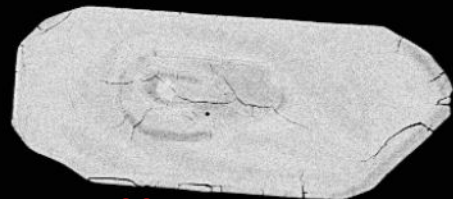
100  $\mu$ m

MIRA3 TESCAN

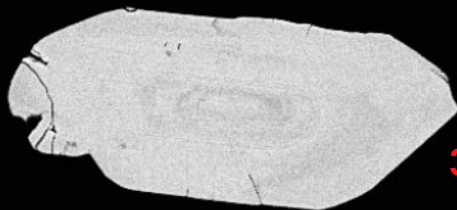
12623-10-cl

Det: CL

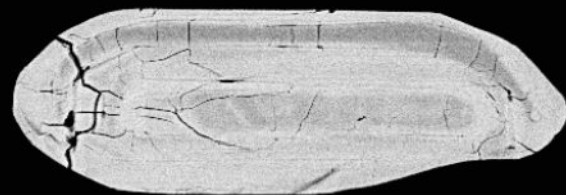
NRCan LMS GSC



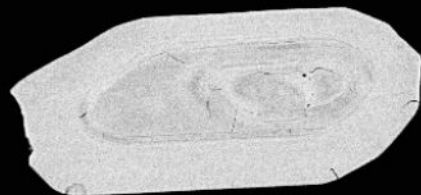
33



32



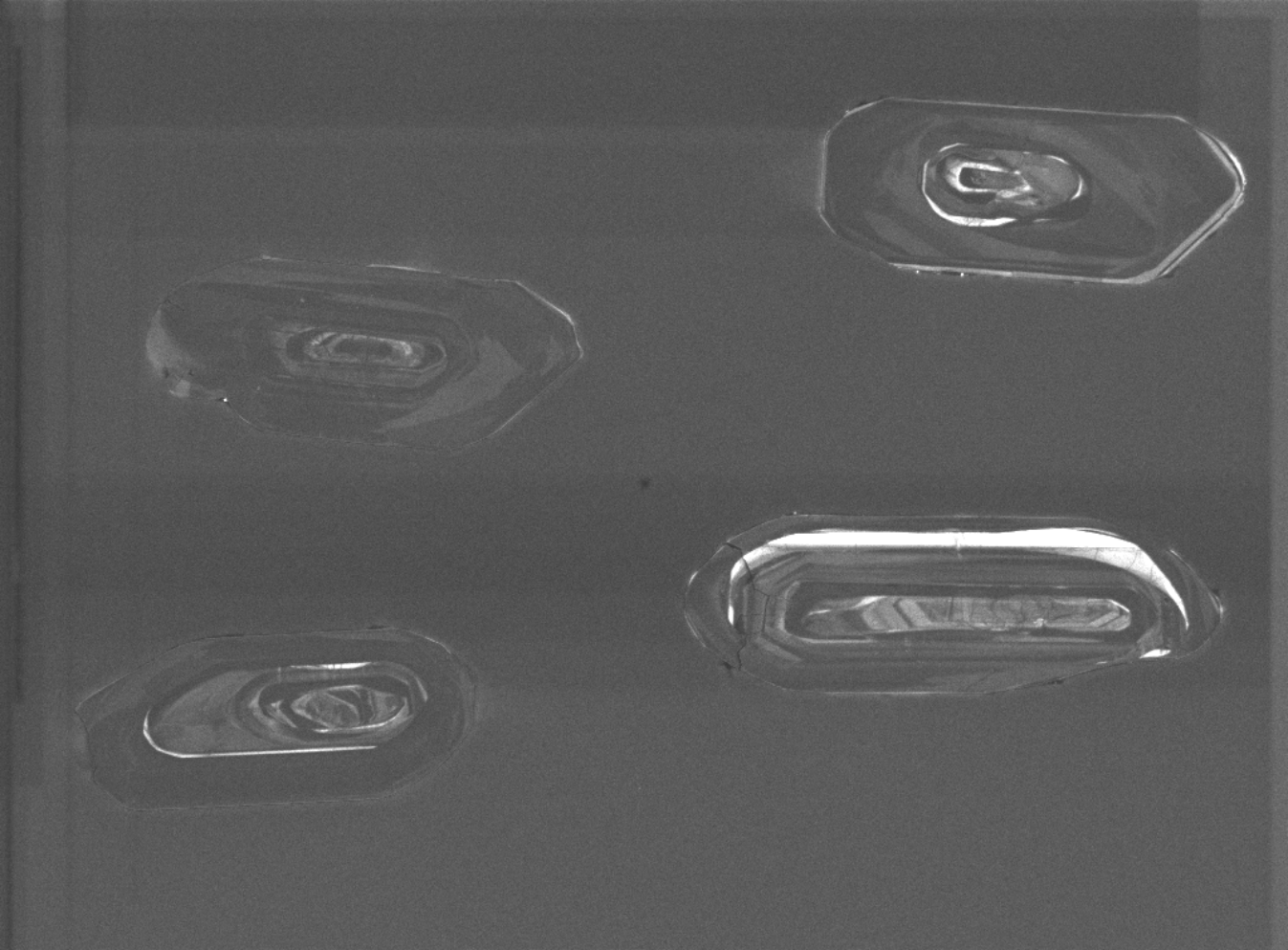
35



34

100µm





SEM HV: 10.0 kV

WD: 16.98 mm

View field: 441  $\mu\text{m}$

SEM MAG: 628 x

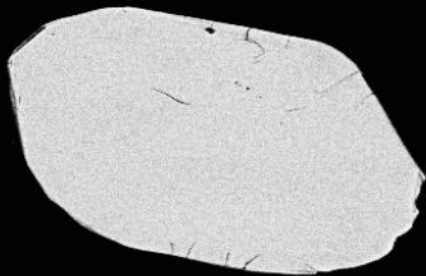
100  $\mu\text{m}$

12623-10-cl

Det: CL

MIRA3 TESCAN

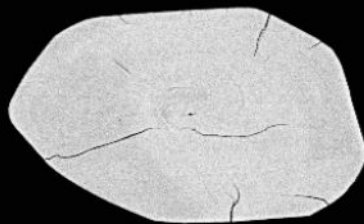
NRCan LMS GSC



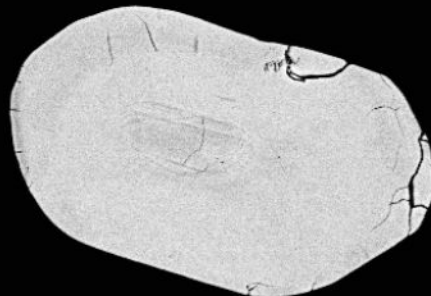
36



37

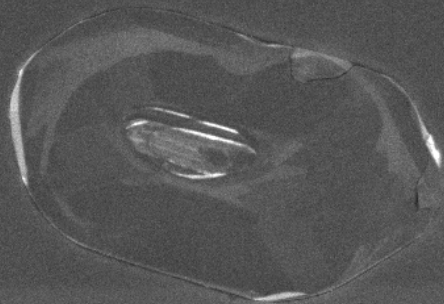
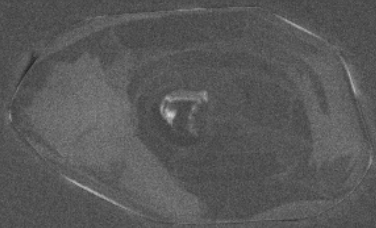
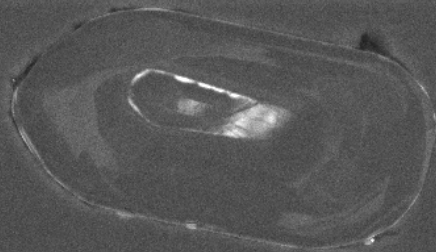
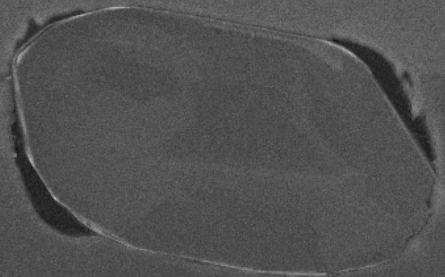


38



39

100µm



SEM HV: 10.0 kV

WD: 16.98 mm

View field: 348  $\mu\text{m}$

SEM MAG: 795 x

100  $\mu\text{m}$

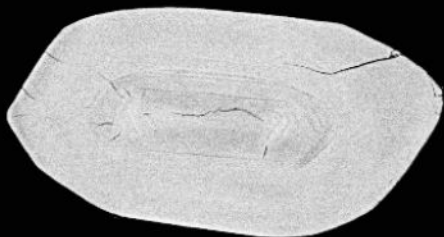
MIRA3 TESCAN

12623-11-cl

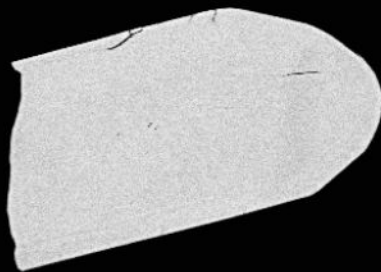
Det: CL

NRCan LMS GSC

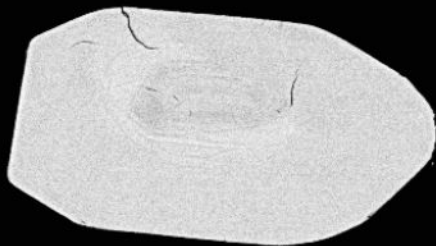




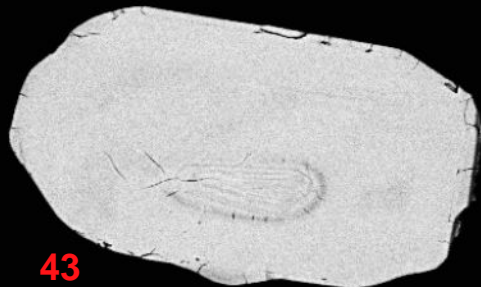
40



41

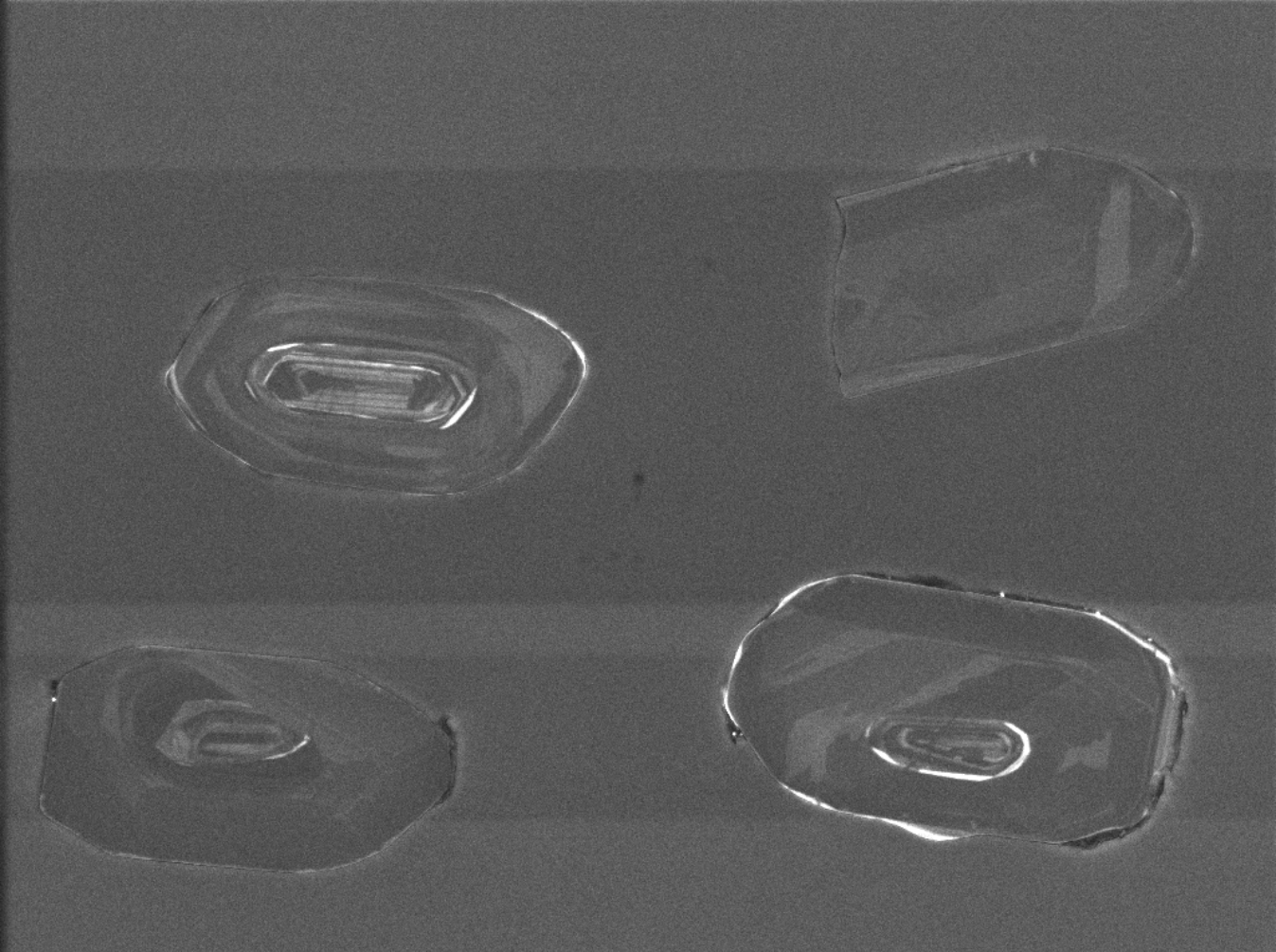


42



43

100µm



SEM HV: 10.0 kV

WD: 16.98 mm

MIRA3 TESCAN

View field: 338  $\mu\text{m}$

SEM MAG: 819 x

100  $\mu\text{m}$

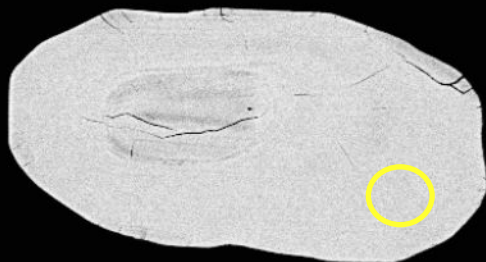
12623-12-cl

Det: CL

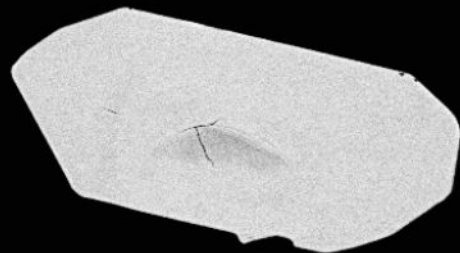
NRCan LMS GSC







44

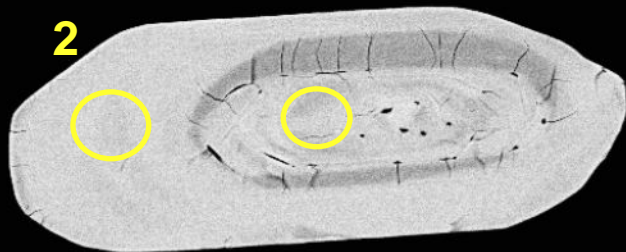


45



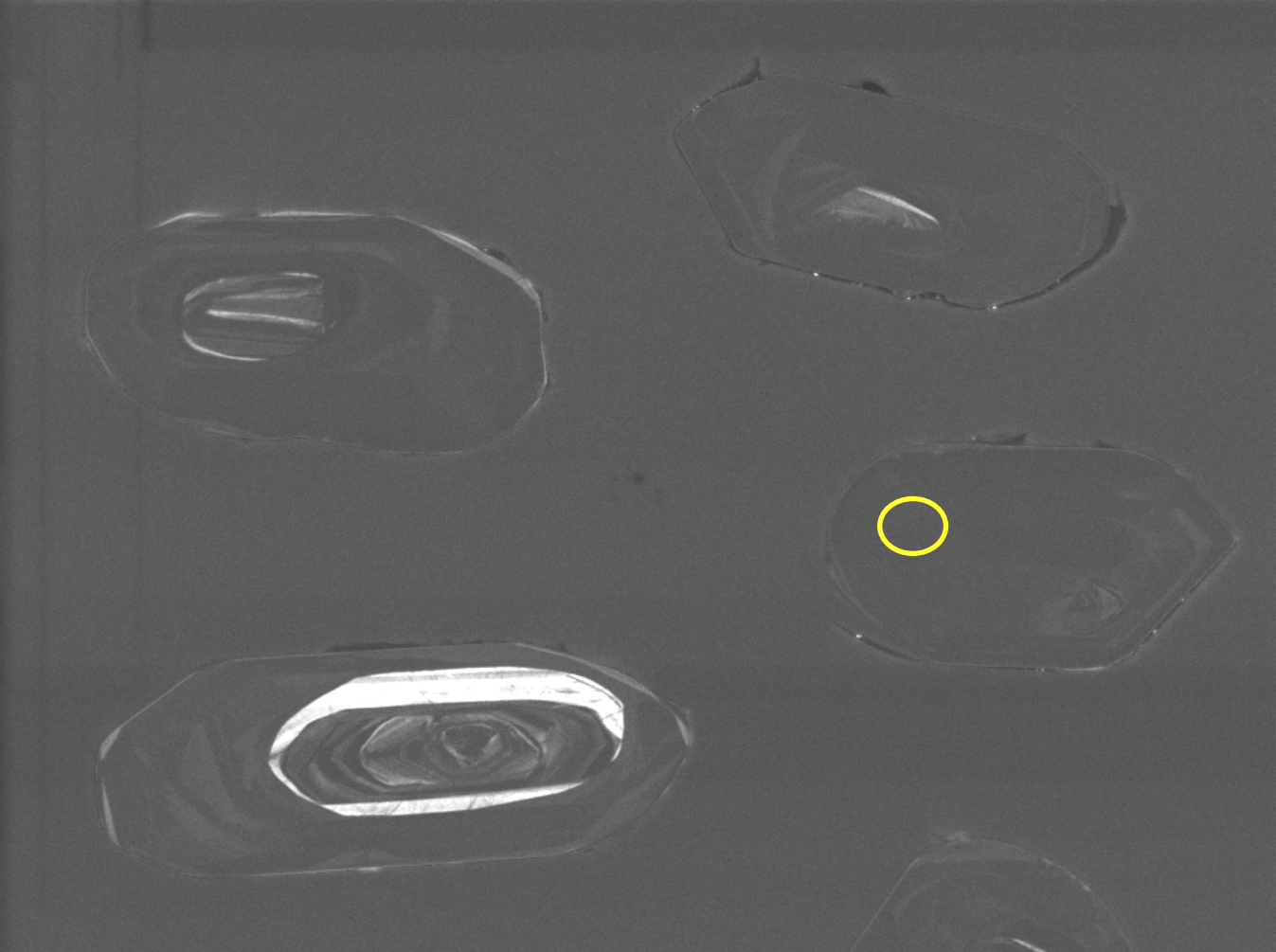
47

46



2

100µm



SEM HV: 10.0 kV

WD: 16.98 mm

View field: 356  $\mu\text{m}$

SEM MAG: 778 x

100  $\mu\text{m}$

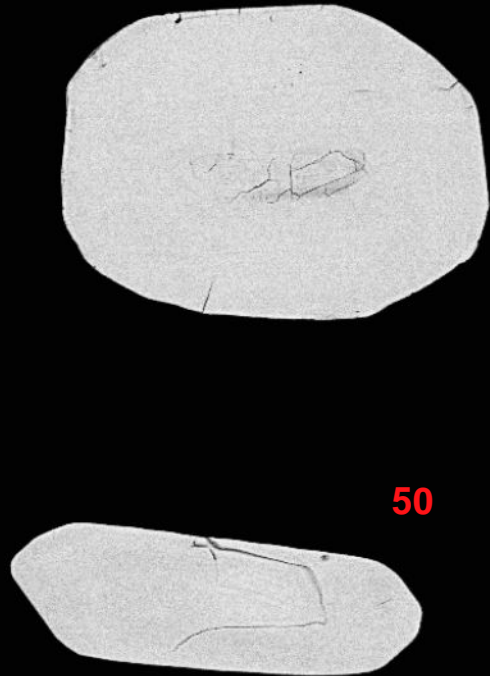
MIRA3 TESCAN

12623-13-cl

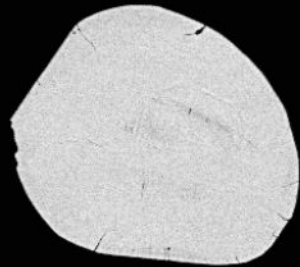
Det: CL

NRCan LMS GSC

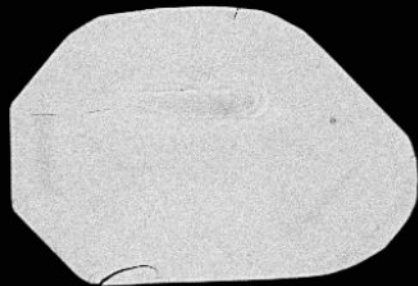




48



49

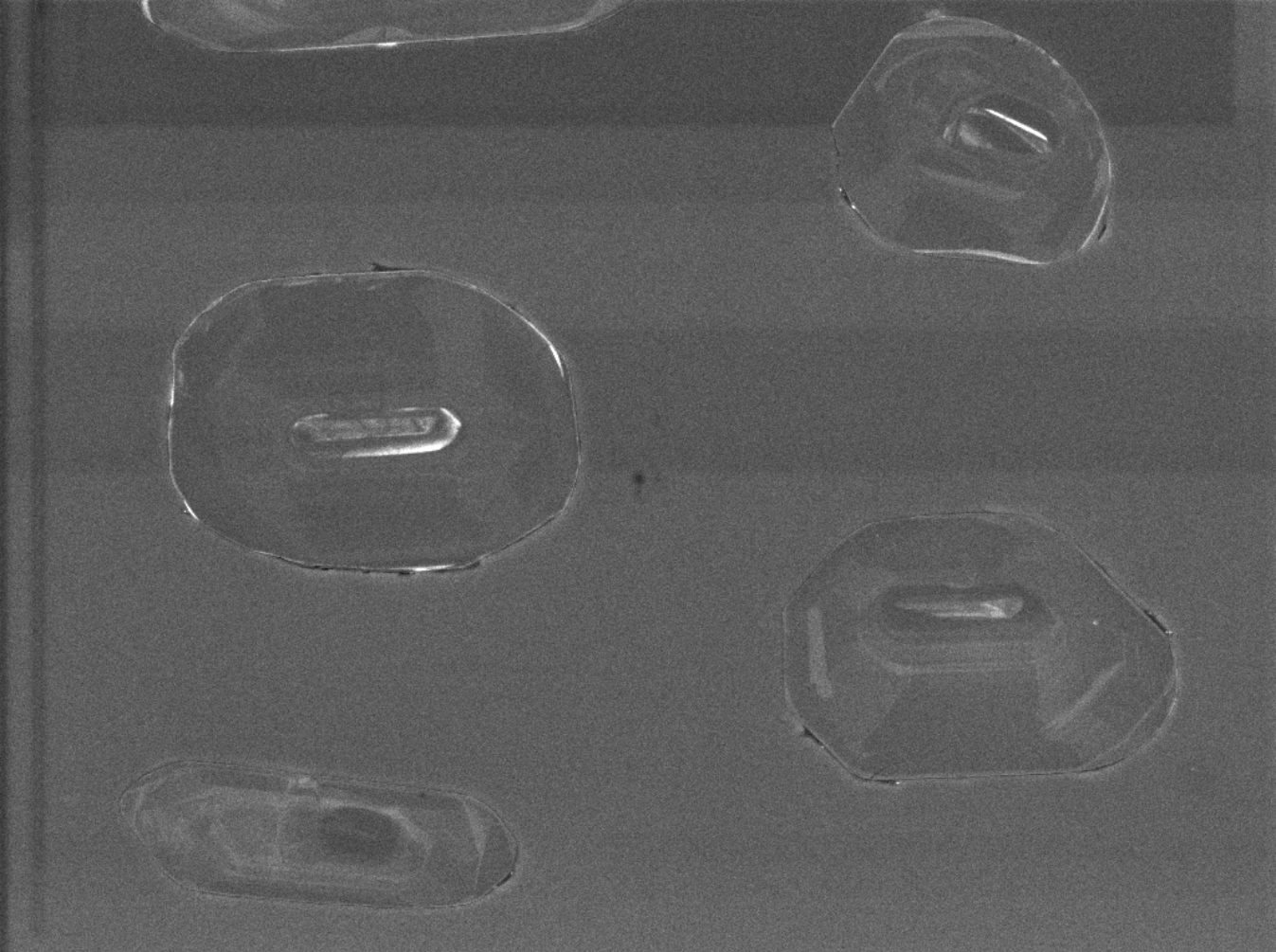


51

50



100µm



SEM HV: 10.0 kV

WD: 16.98 mm

View field: 382  $\mu\text{m}$

SEM MAG: 725 x

100  $\mu\text{m}$

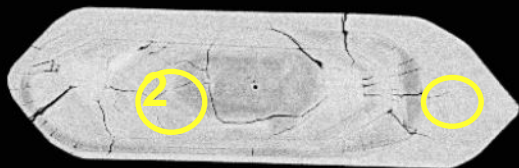
MIRA3 TESCAN

12623-14-cl

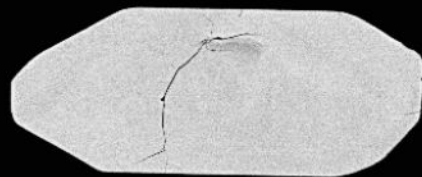
Det: CL

NRCan LMS GSC





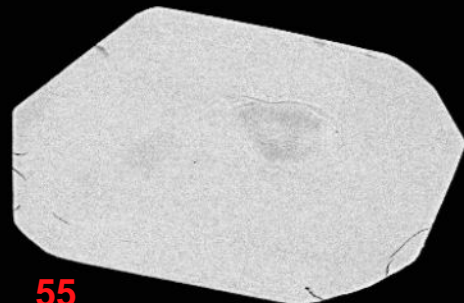
52



53

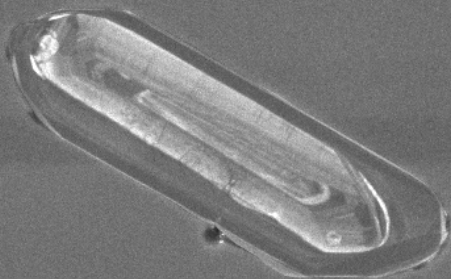
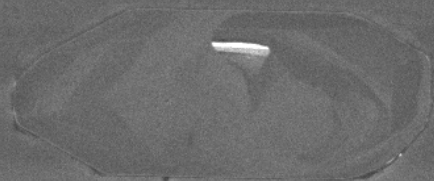
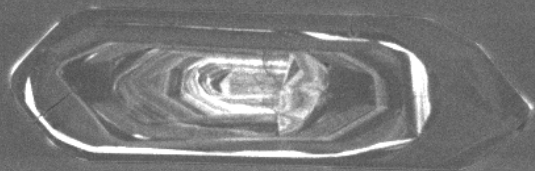


54



55

100μm



SEM HV: 10.0 kV

WD: 16.98 mm

View field: 396  $\mu\text{m}$

SEM MAG: 698 x

100  $\mu\text{m}$

MIRA3 TESCAN

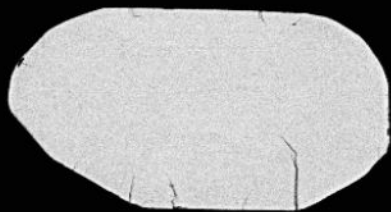
12623-15-cl

Det: CL

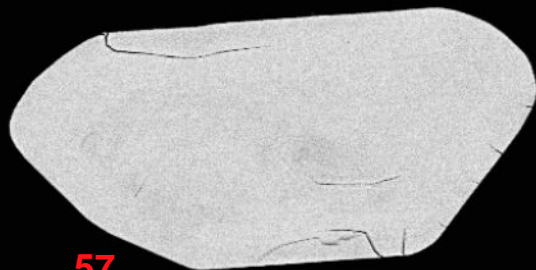
NRCan LMS GSC



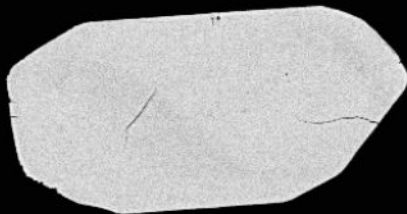




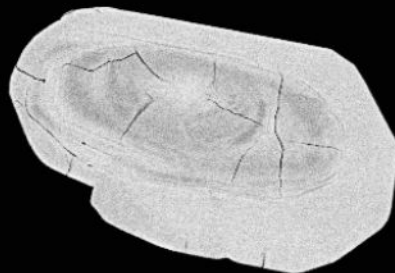
56



57

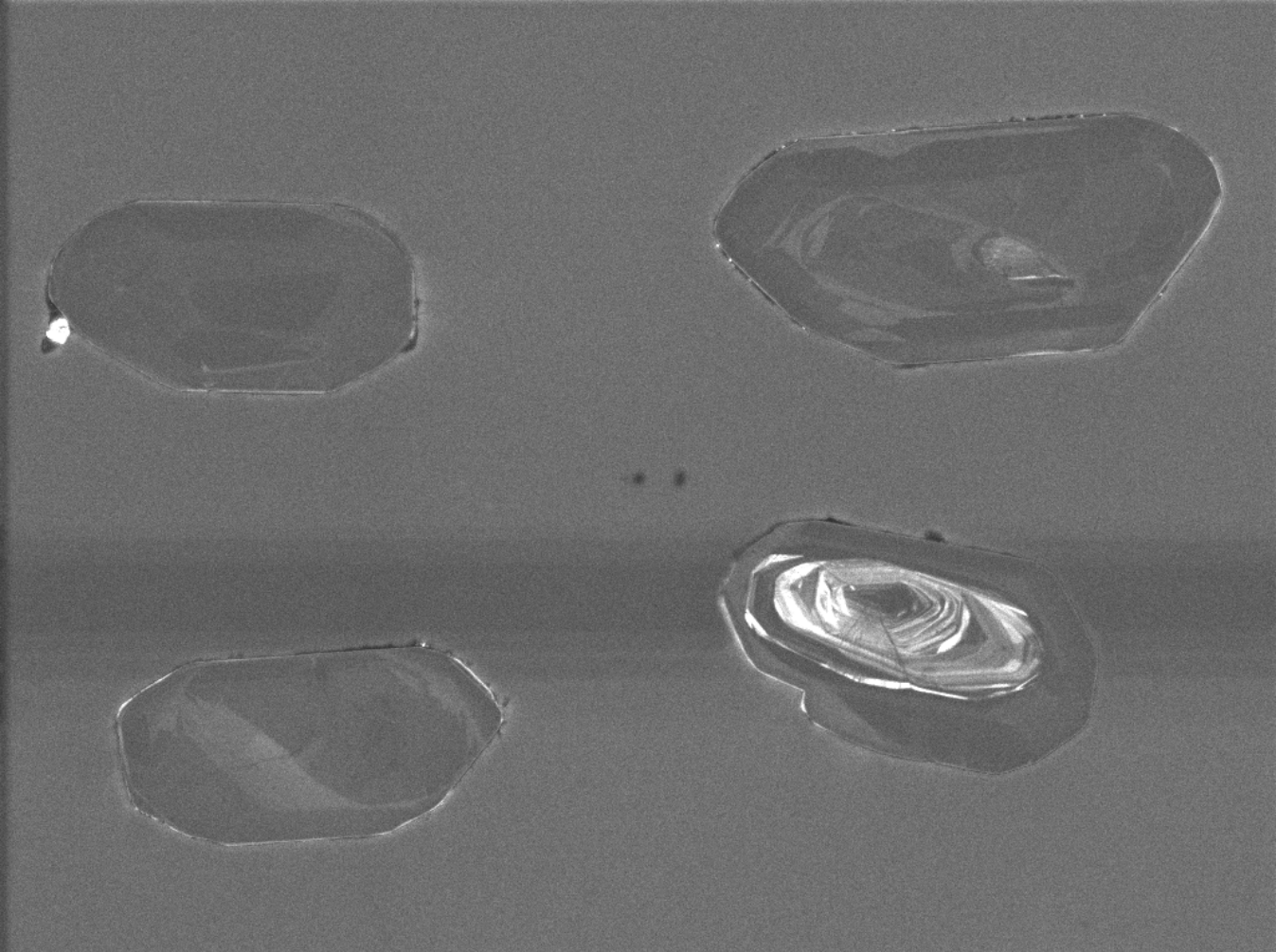


58



59

100µm



SEM HV: 10.0 kV

WD: 16.98 mm

View field: 375  $\mu\text{m}$

SEM MAG: 739 x

100  $\mu\text{m}$

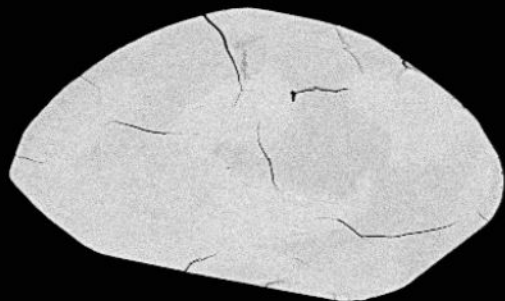
MIRA3 TESCAN

12623-16-cl

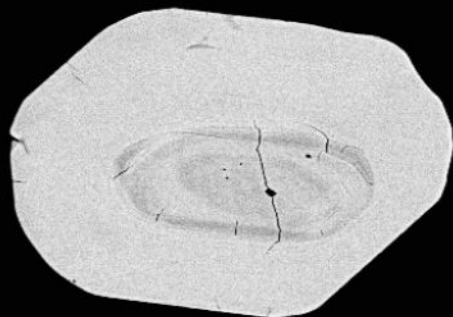
Det: CL

NRCan LMS GSC





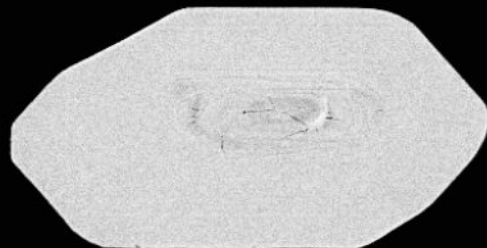
60



61

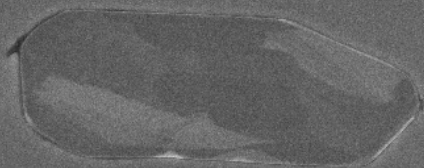
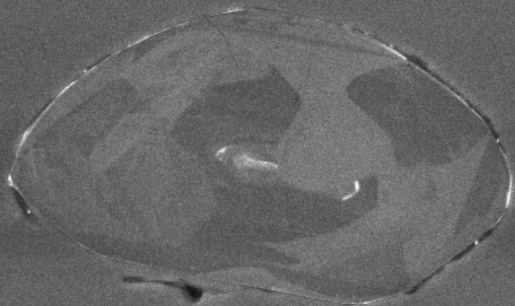


62



63

100µm



SEM HV: 10.0 kV

WD: 16.98 mm

View field: 378  $\mu\text{m}$

SEM MAG: 732 x

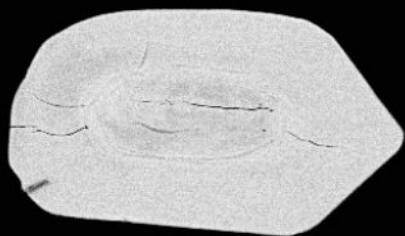
100  $\mu\text{m}$

MIRA3 TESCAN

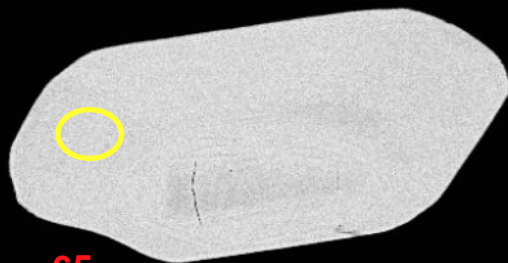
12623-17-cl

Det: CL

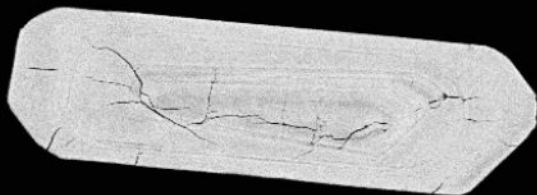
NRCan LMS GSC



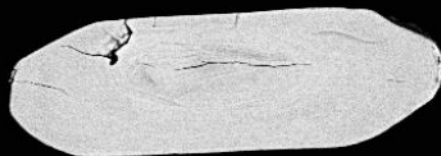
64



65

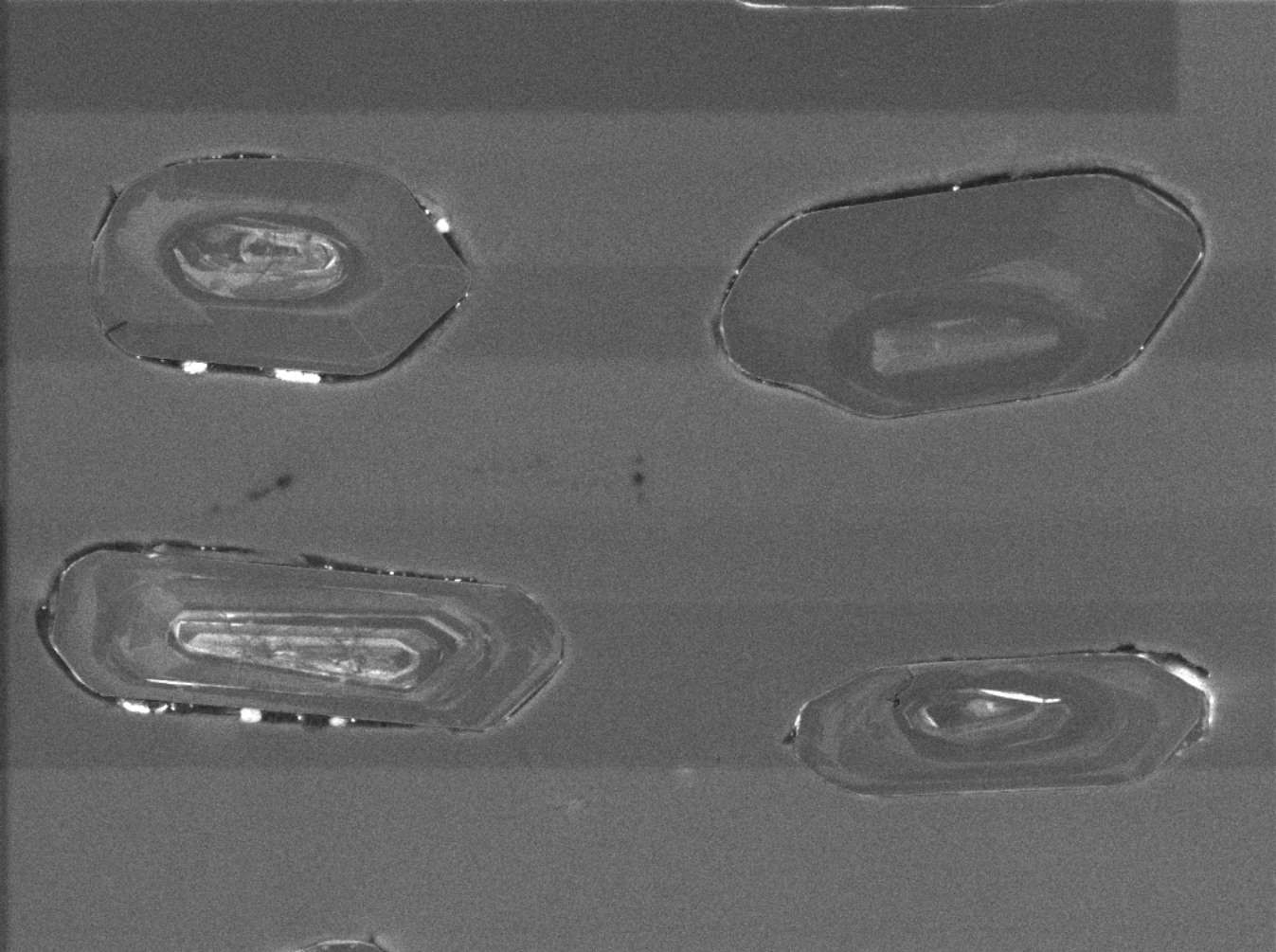


66



67

100µm



SEM HV: 10.0 kV

WD: 16.98 mm

View field: 378  $\mu\text{m}$

SEM MAG: 732 x

100  $\mu\text{m}$

MIRA3 TESCAN

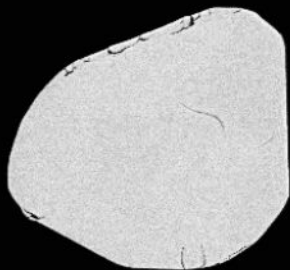
12623-18-cl

Det: CL

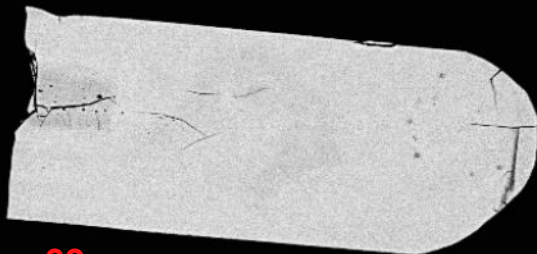
NRCan LMS GSC



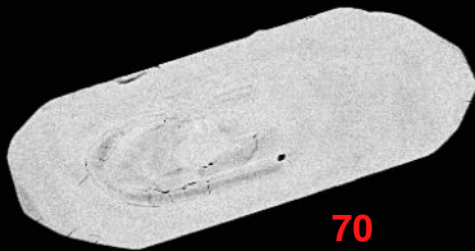




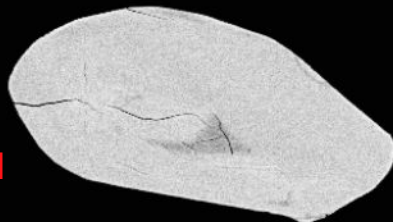
68



69

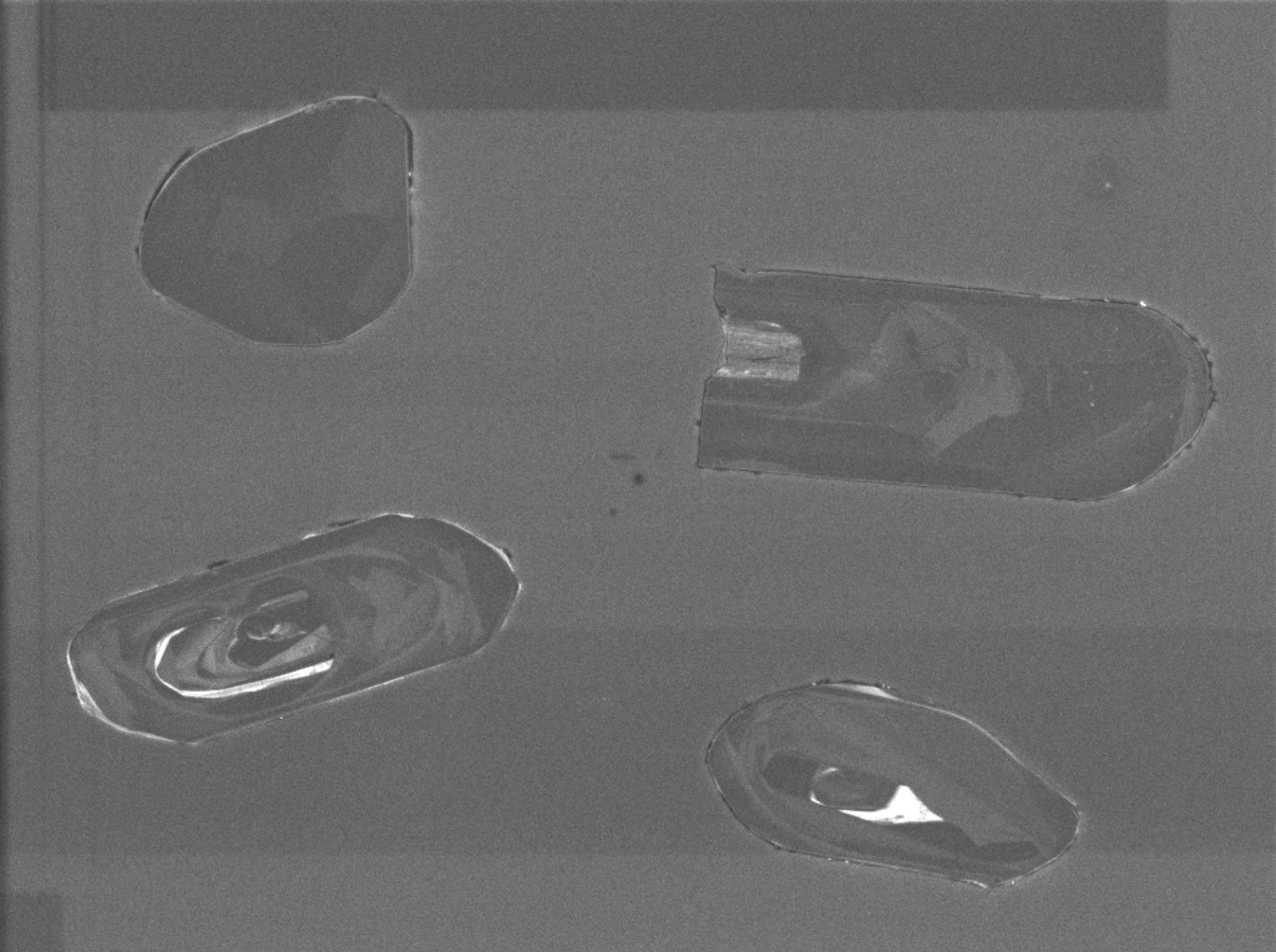


70



71

100µm



SEM HV: 10.0 kV

WD: 16.98 mm

View field: 433  $\mu\text{m}$

SEM MAG: 640 x

100  $\mu\text{m}$

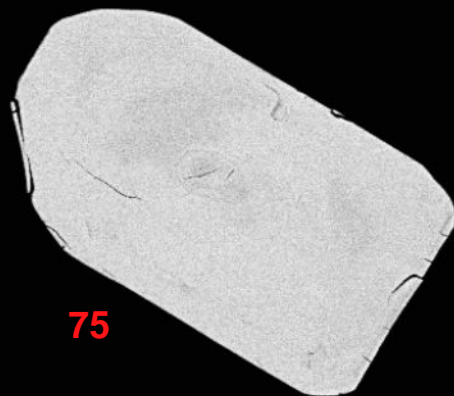
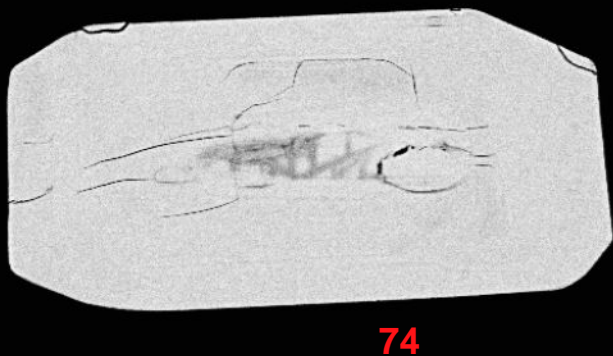
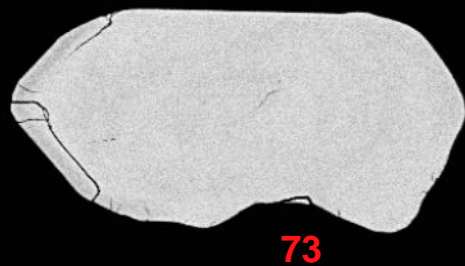
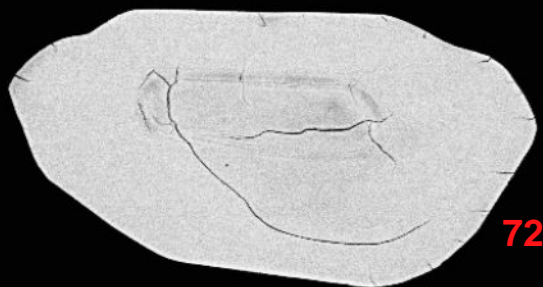
MIRA3 TESCAN

12623-19-cl

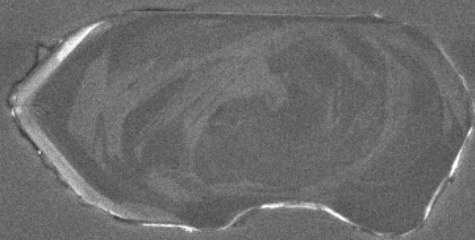
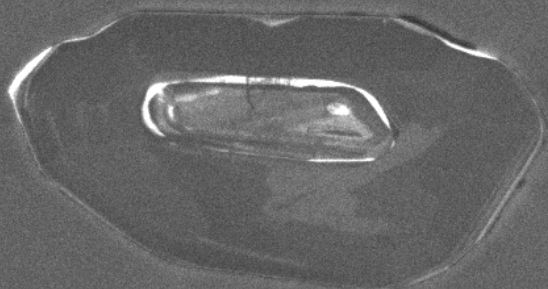
Det: CL

NRCan LMS GSC





100µm



SEM HV: 10.0 kV

WD: 16.98 mm

View field: 352  $\mu\text{m}$

SEM MAG: 787 x

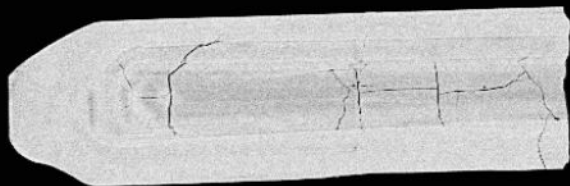
100  $\mu\text{m}$

MIRA3 TESCAN

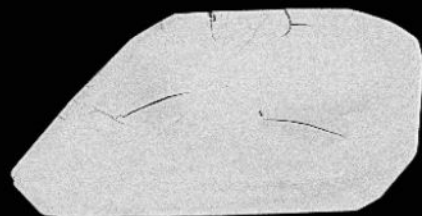
12623-20-cl

Det: CL

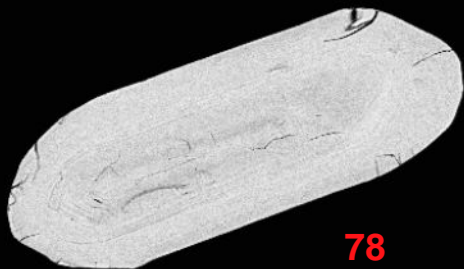
NRCan LMS GSC



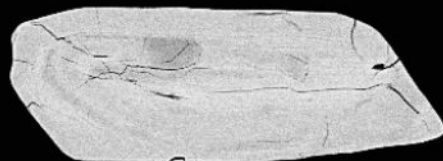
76



77

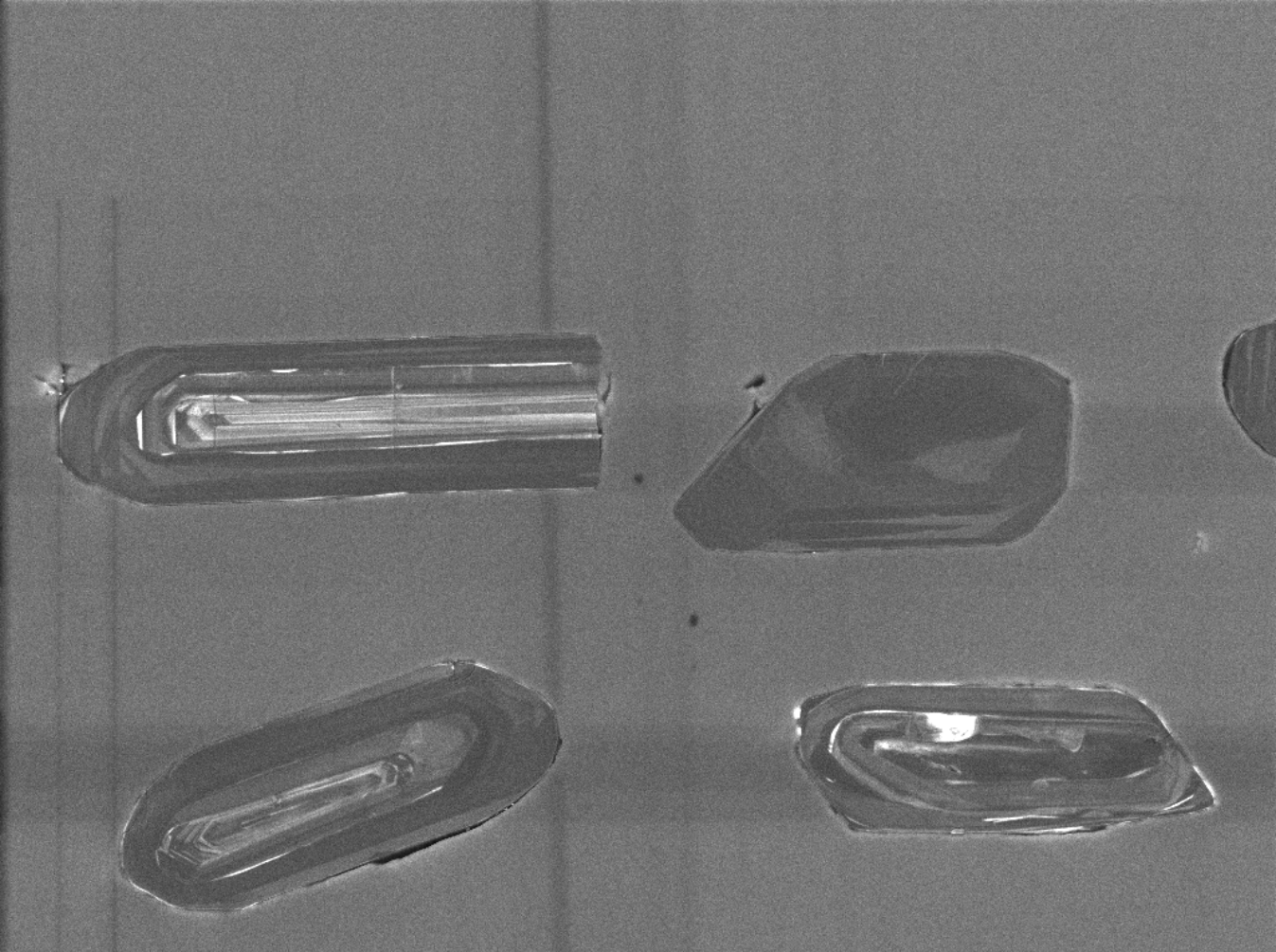


78



79

100µm



SEM HV: 10.0 kV

WD: 16.99 mm

View field: 500  $\mu$ m

SEM MAG: 553 x

100  $\mu$ m

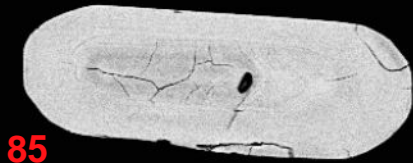
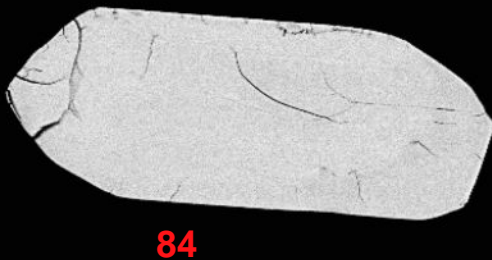
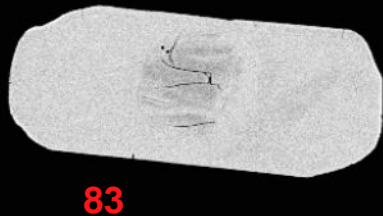
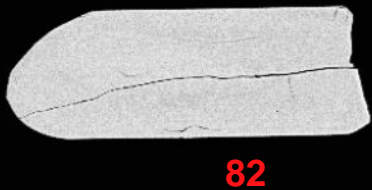
MIRA3 TESCAN

12623-21-cl

Det: CL

NRCan LMS GSC





100µm



SEM HV: 10.0 kV

WD: 16.99 mm

View field: 476  $\mu\text{m}$

SEM MAG: 582 x

100  $\mu\text{m}$

MIRA3 TESCAN

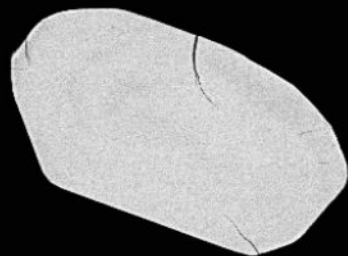
12623-22-cl

Det: CL

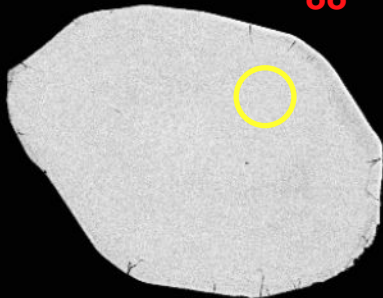
NRCan LMS GSC



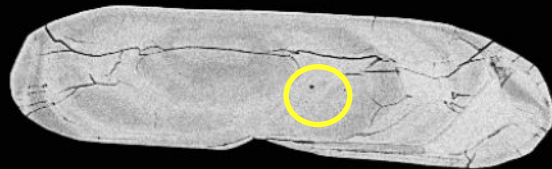
86



87

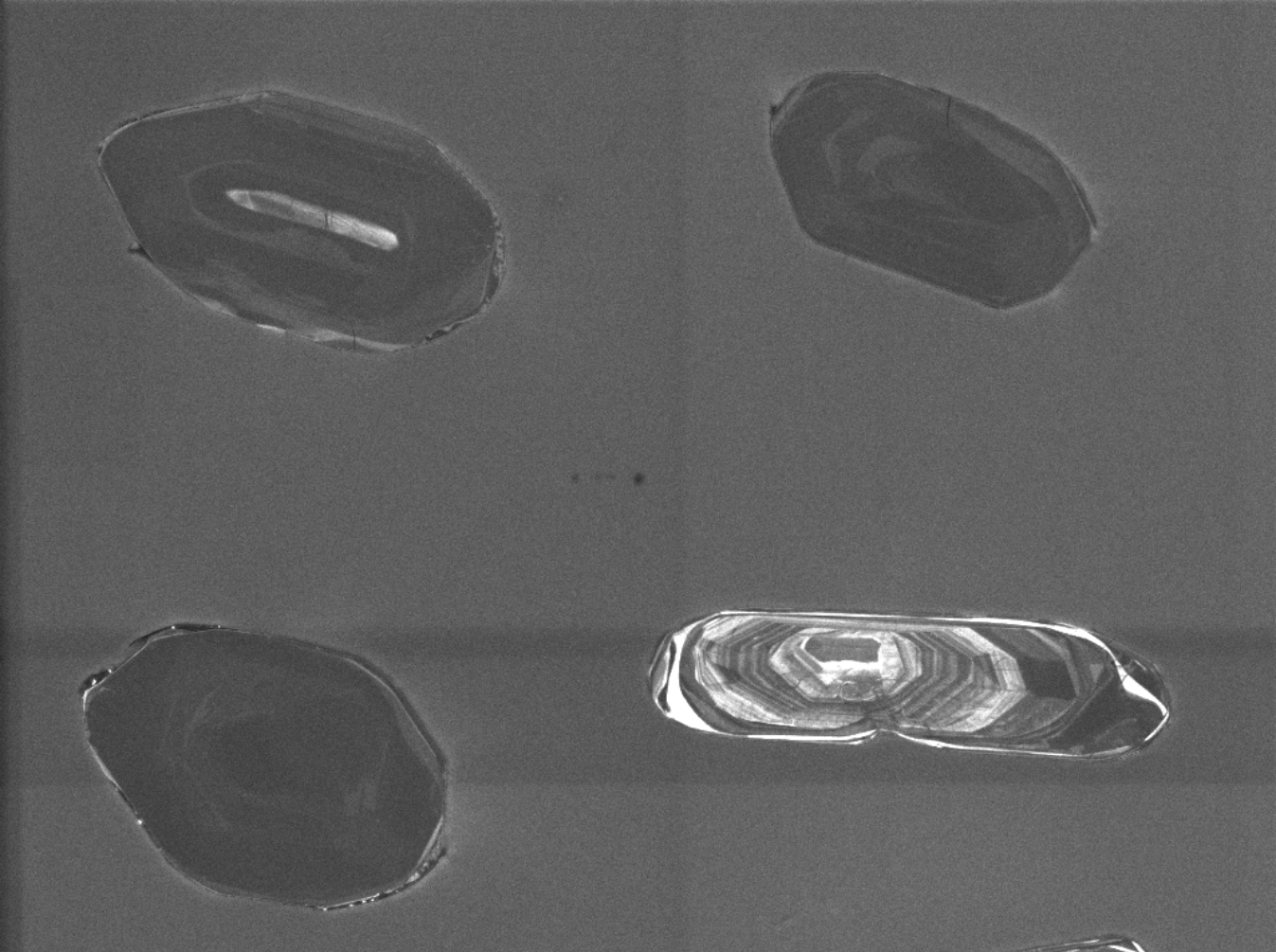


88



89

100µm



SEM HV: 10.0 kV

WD: 16.99 mm

View field: 448  $\mu$ m

SEM MAG: 617 x

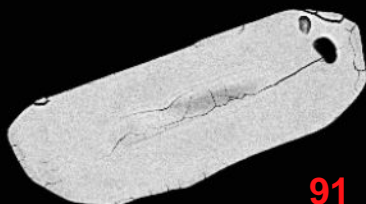
100  $\mu$ m

12623-23-cl

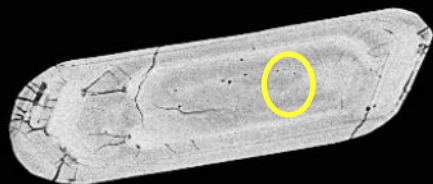
Det: CL

MIRA3 TESCAN

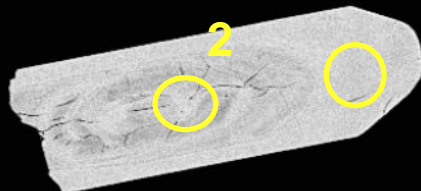
NRCan LMS GSC



91



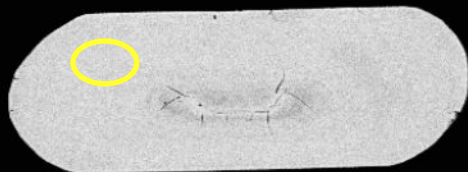
92



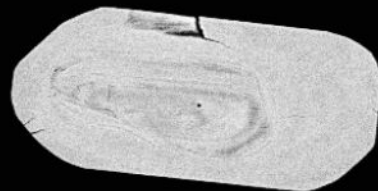
94



93

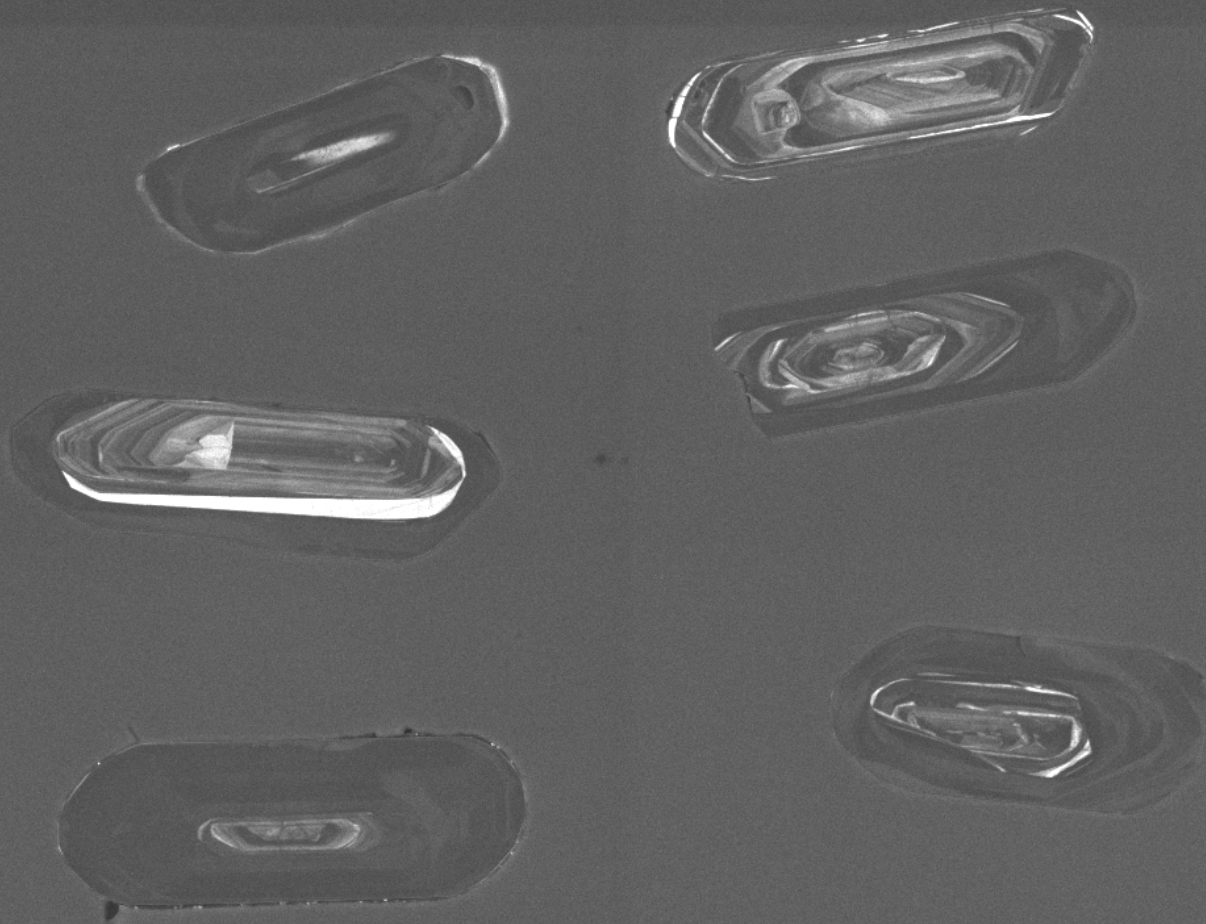


95



96

100µm



SEM HV: 10.0 kV

WD: 16.99 mm

View field: 471  $\mu\text{m}$

SEM MAG: 587 x



12623-24-cl

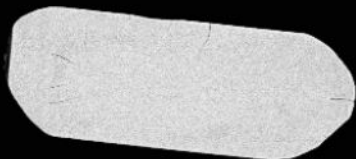
Det: CL

MIRA3 TESCAN

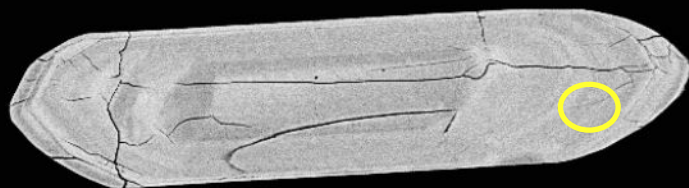
NRCan LMS GSC







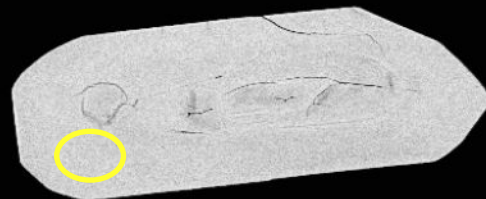
97



98



99



100

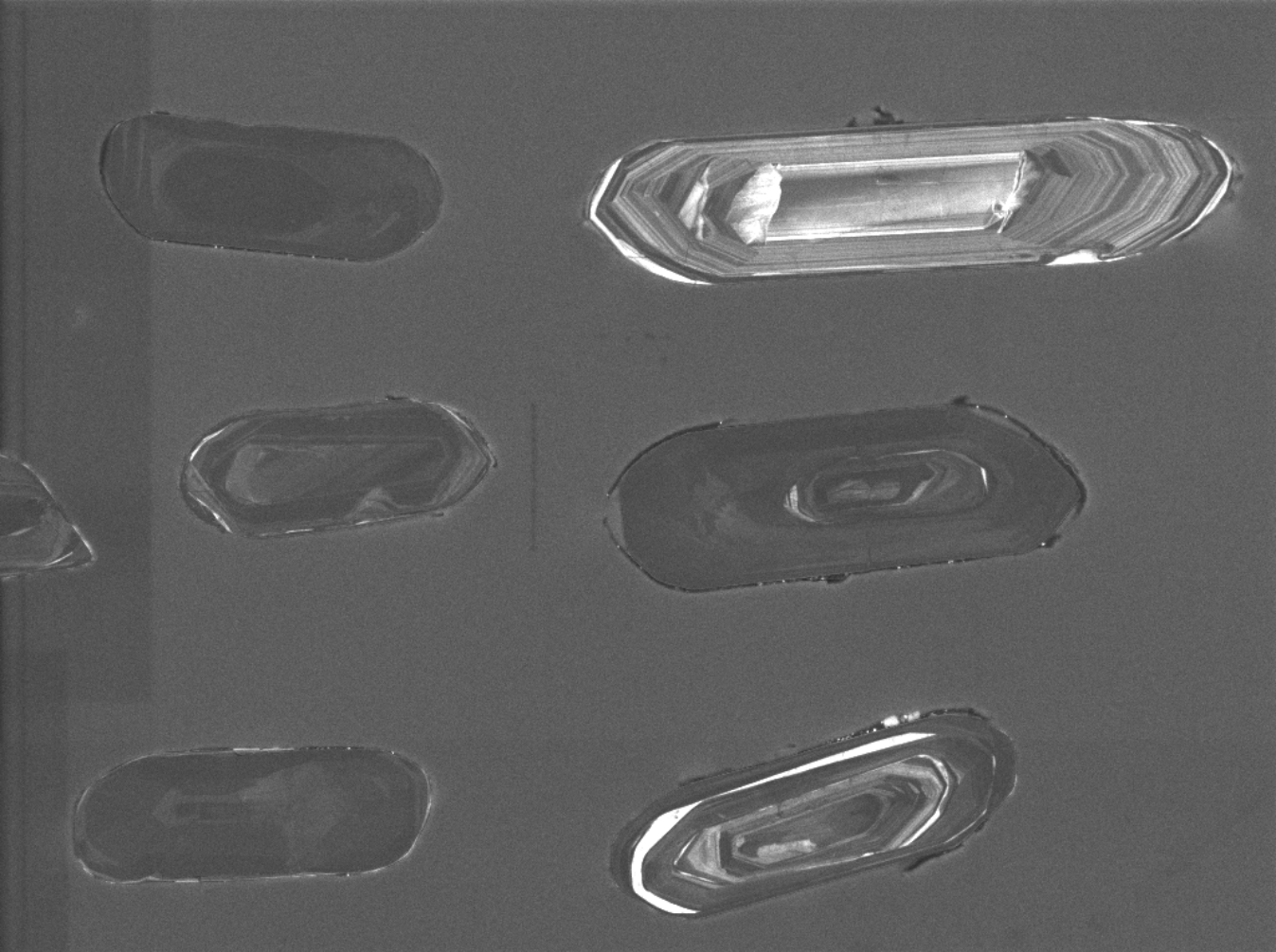


101



102

100μm



SEM HV: 10.0 kV

WD: 16.99 mm

View field: 539  $\mu\text{m}$

SEM MAG: 513 x

100  $\mu\text{m}$

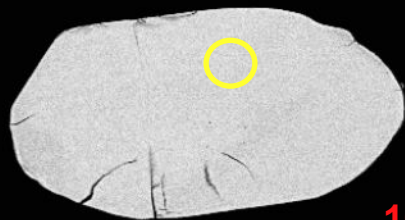
MIRA3 TESCAN

12623-25-cl

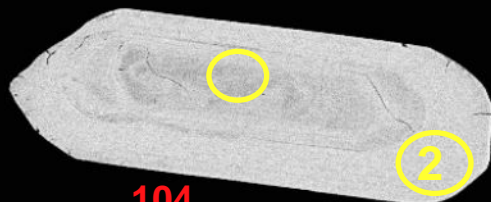
Det: CL

NRCan LMS GSC



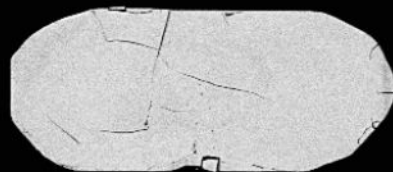


103

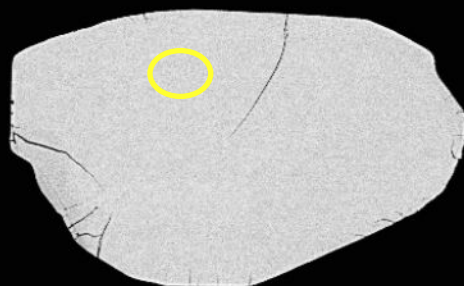
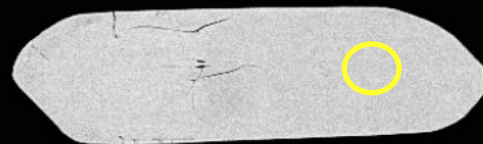


104

105

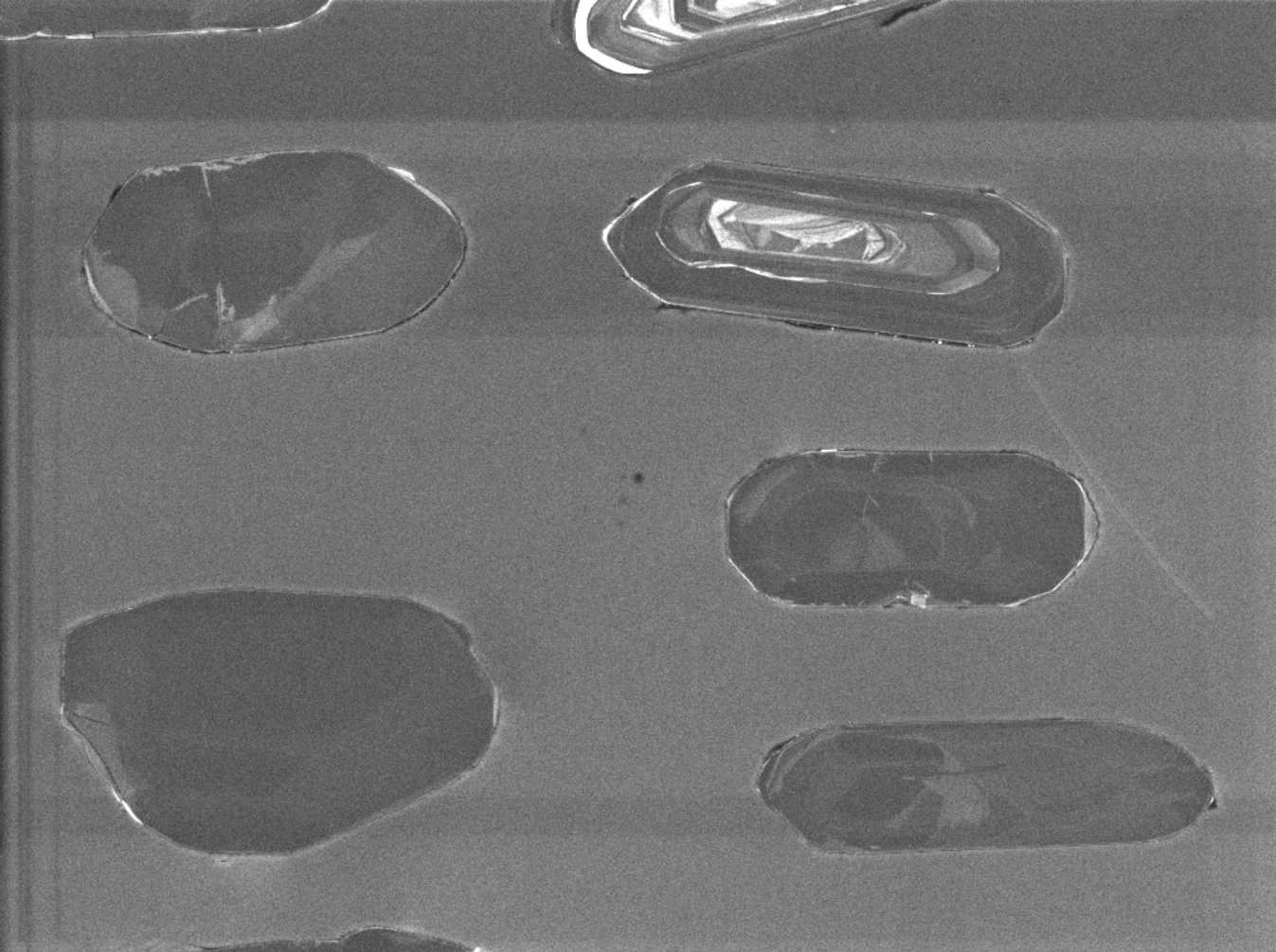


107



106

100µm



SEM HV: 10.0 kV

WD: 16.99 mm

View field: 485  $\mu\text{m}$

SEM MAG: 571 x



100  $\mu\text{m}$

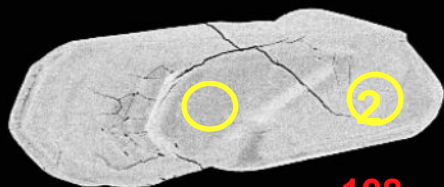
12623-26-cl

Det: CL

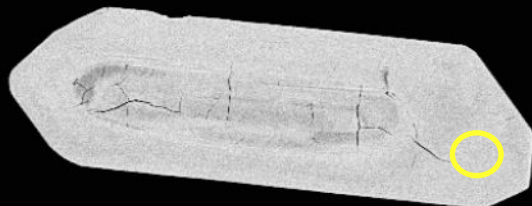
MIRA3 TESCAN

NRCan LMS GSC

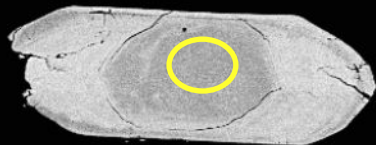




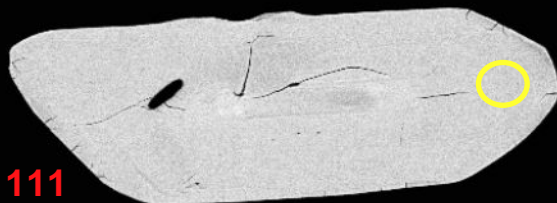
108



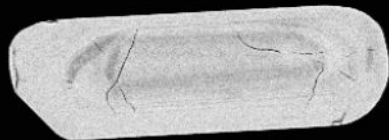
109



110

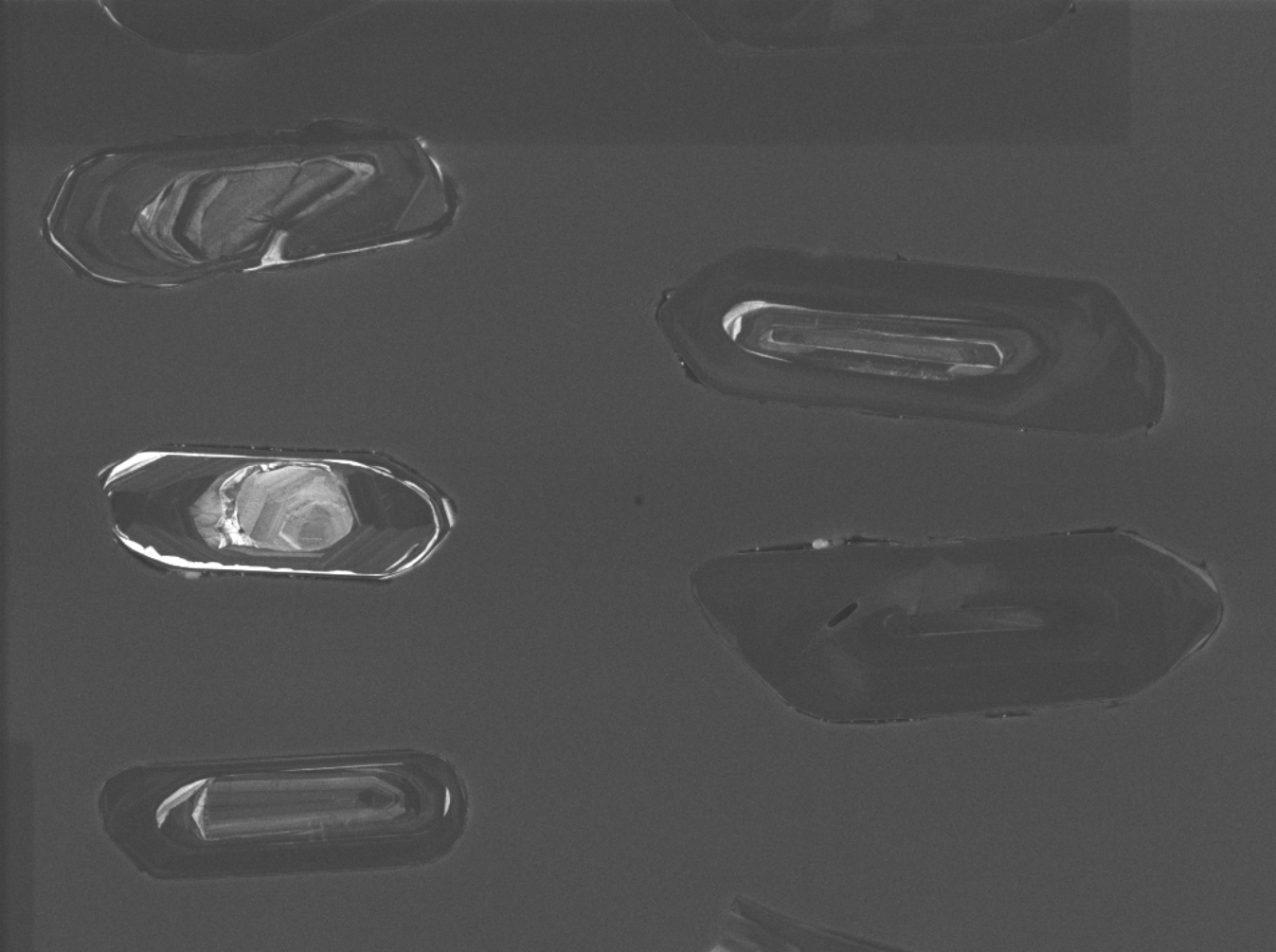


111



112

100µm



SEM HV: 10.0 kV

WD: 16.99 mm

View field: 547  $\mu\text{m}$

SEM MAG: 506 x



100  $\mu\text{m}$

12623-27-cl

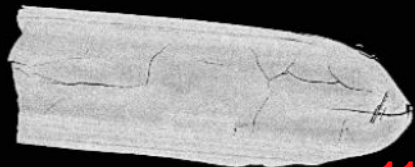
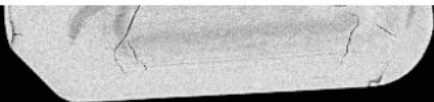
Det: CL

MIRA3 TESCAN

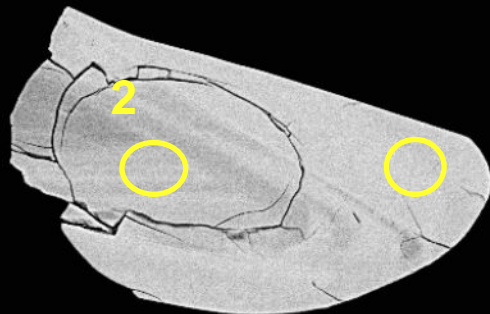
NRCan LMS GSC



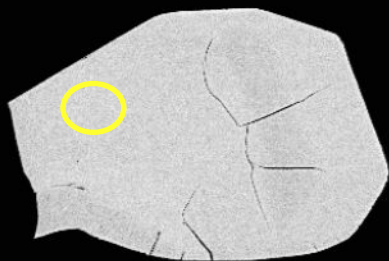




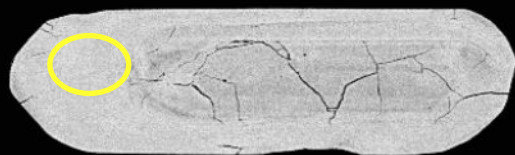
112



113

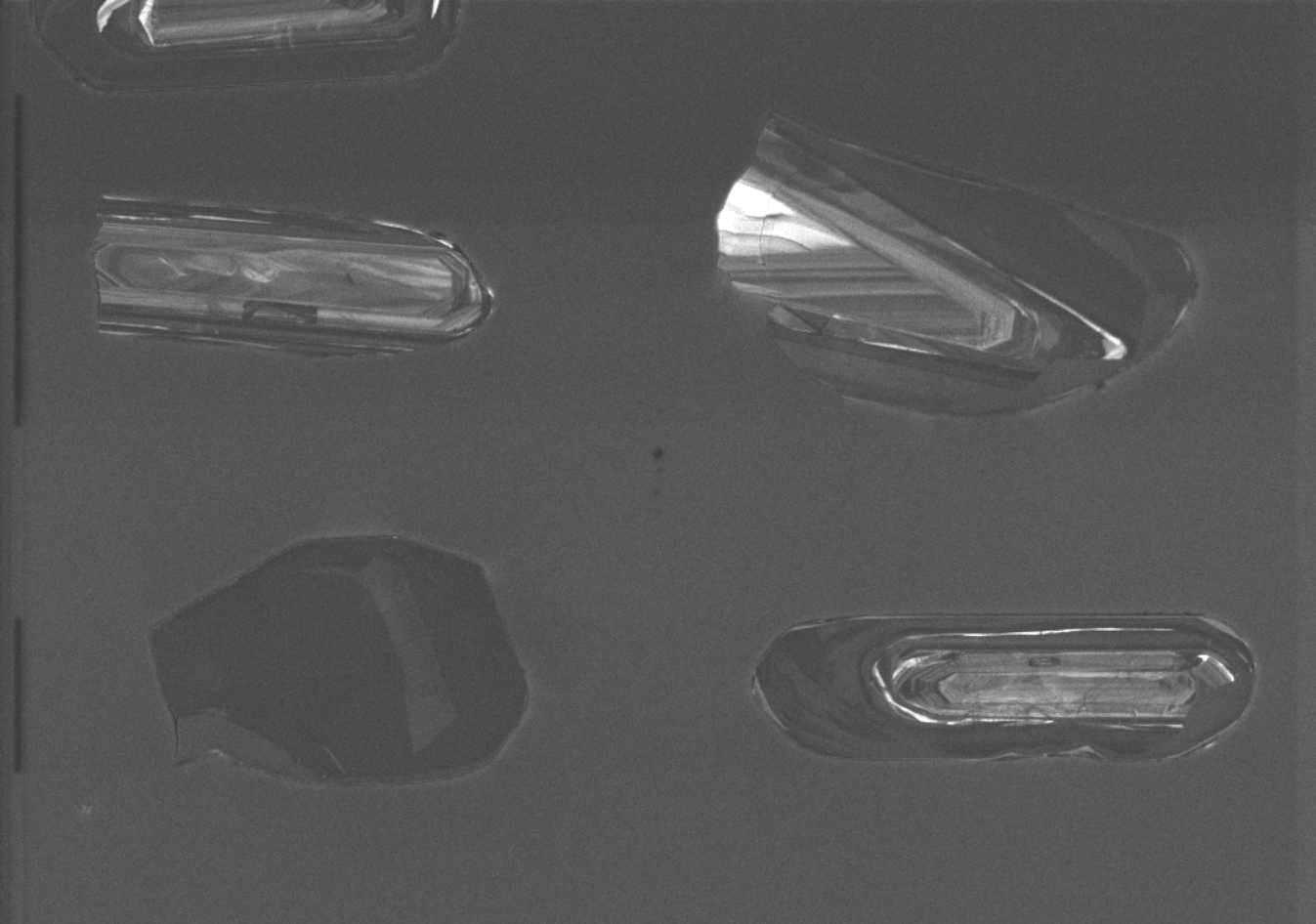


114



115

100μm



SEM HV: 10.0 kV

WD: 16.99 mm

View field: 485  $\mu\text{m}$

SEM MAG: 570 x



100  $\mu\text{m}$

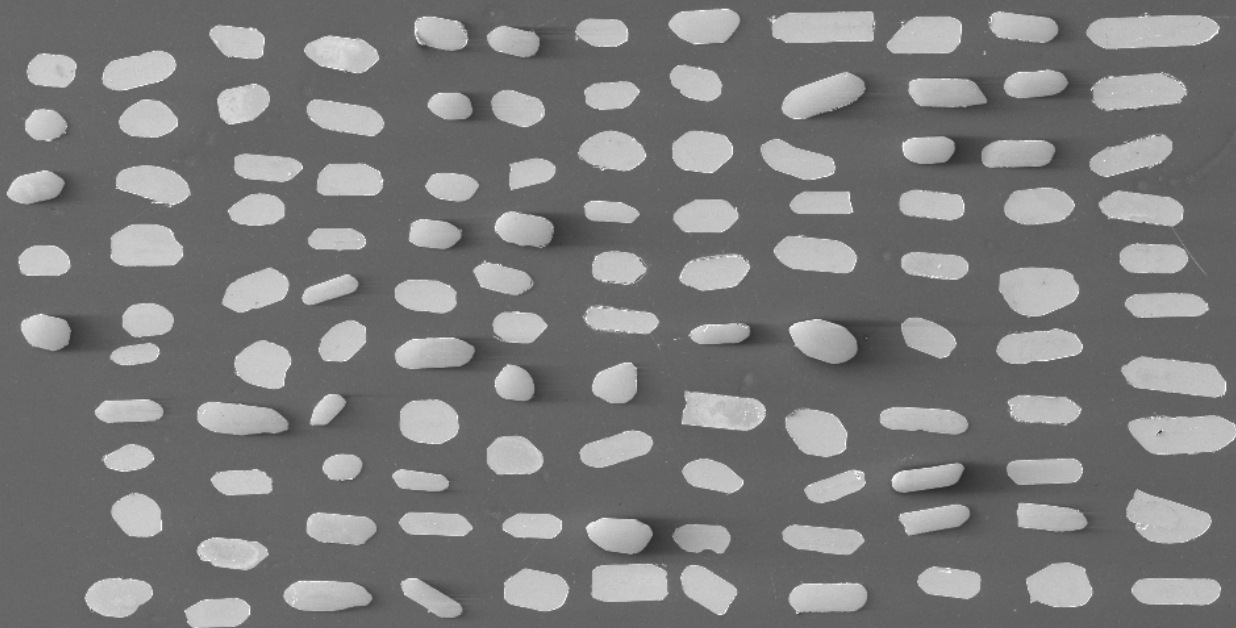
12623-28-cl

Det: CL

MIRA3 TESCAN

NRCan LMS GSC





SEM HV: 10.0 kV

WD: 75.91 mm

View field: 2.83 mm

SEM MAG: 98 x

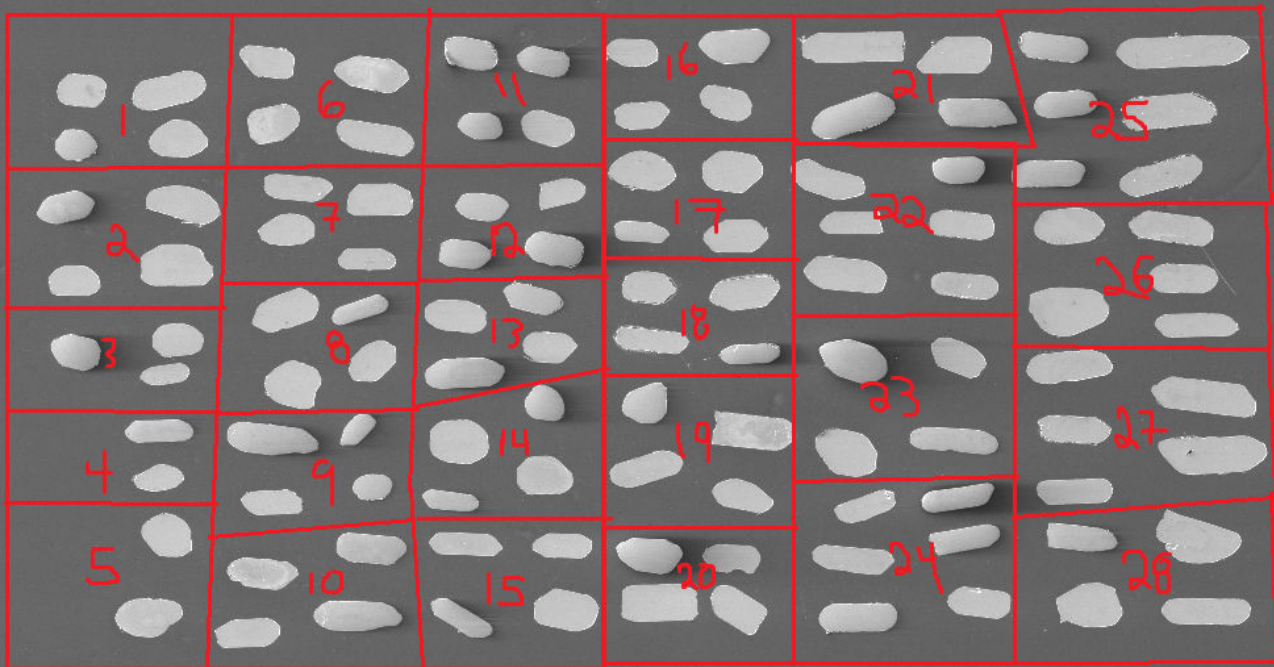
12623-map

Det: SE

500  $\mu$ m

MIRA3 TESCAN

NRCan LMS GSC



SEM HV: 10.0 kV

WD: 75.91 mm

View field: 2.83 mm

SEM MAG: 98 x

500  $\mu$ m

12623-map

Det: SE

MIRA3 TESCAN

NRCan LMS GSC