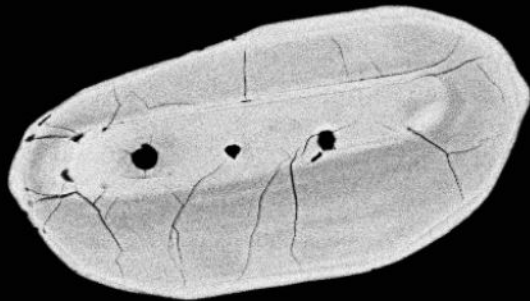
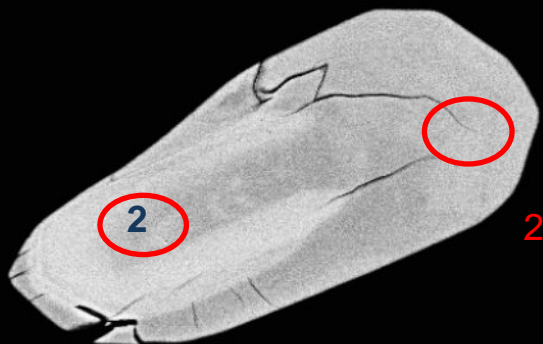


12624-01-bse

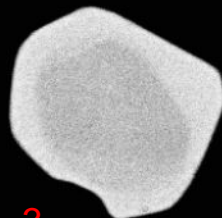


1



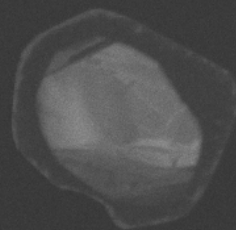
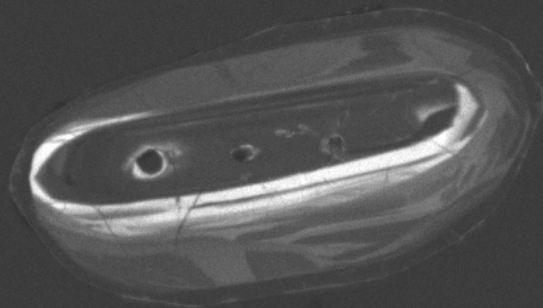
2

2



3

100µm



SEM HV: 10.0 kV

WD: 16.94 mm

View field: 251  $\mu\text{m}$

SEM MAG: 1.10 kx

50  $\mu\text{m}$

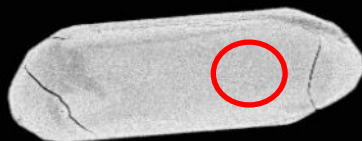
12624-01-cl

Det: CL

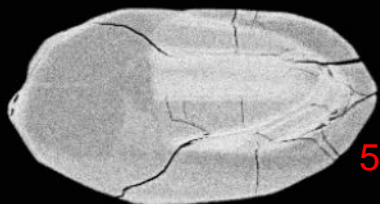
MIRA3 TESCAN

NRCan LMS GSC

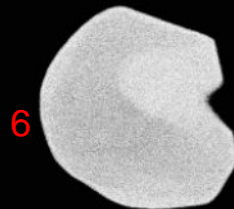




4



5

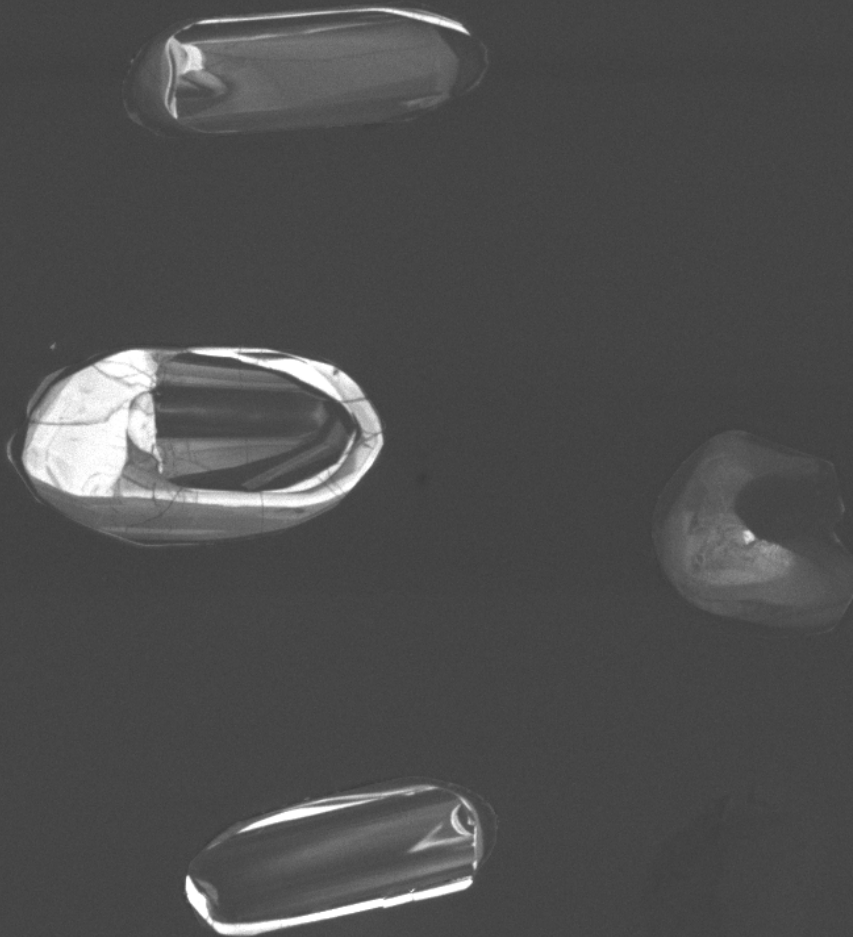


6



7

100µm



SEM HV: 10.0 kV

WD: 16.94 mm

View field: 334  $\mu\text{m}$

SEM MAG: 828 x

100  $\mu\text{m}$

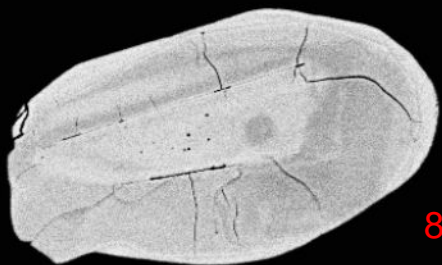
MIRA3 TESCAN

12624-02-cl

Det: CL

NRCan LMS GSC





8



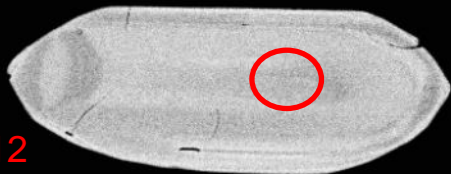
9



10

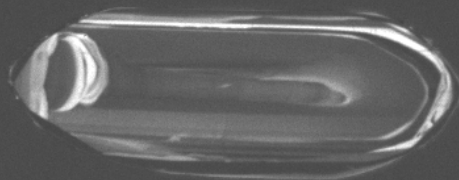
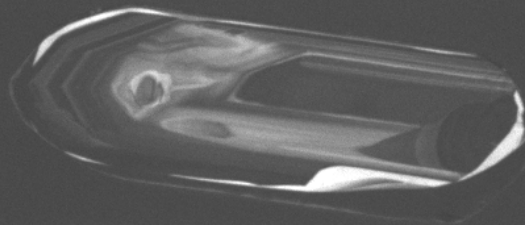
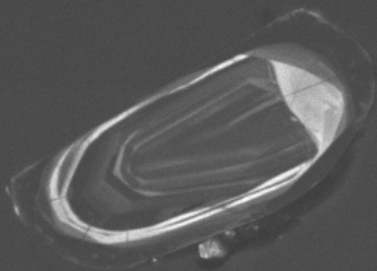
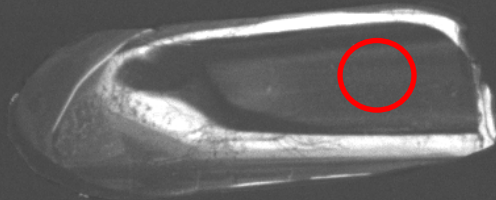
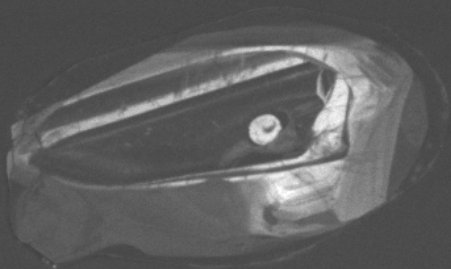


11



12

100µm



SEM HV: 10.0 kV

WD: 16.94 mm

View field: 302  $\mu\text{m}$

SEM MAG: 918 x

50  $\mu\text{m}$

12624-03-cl

Det: CL

MIRA3 TESCAN

NRCan LMS GSC





13

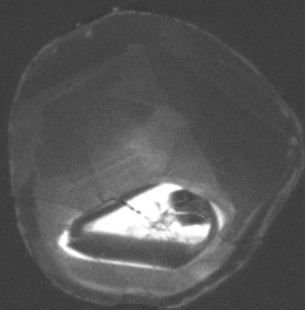
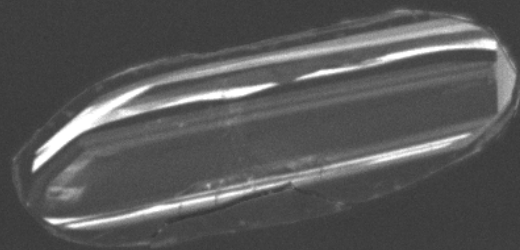
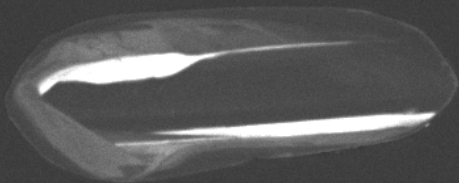


14



15

100µm



SEM HV: 10.0 kV

WD: 16.94 mm

View field: 268  $\mu\text{m}$

SEM MAG: 1.03 kx

50  $\mu\text{m}$

12624-04-cl

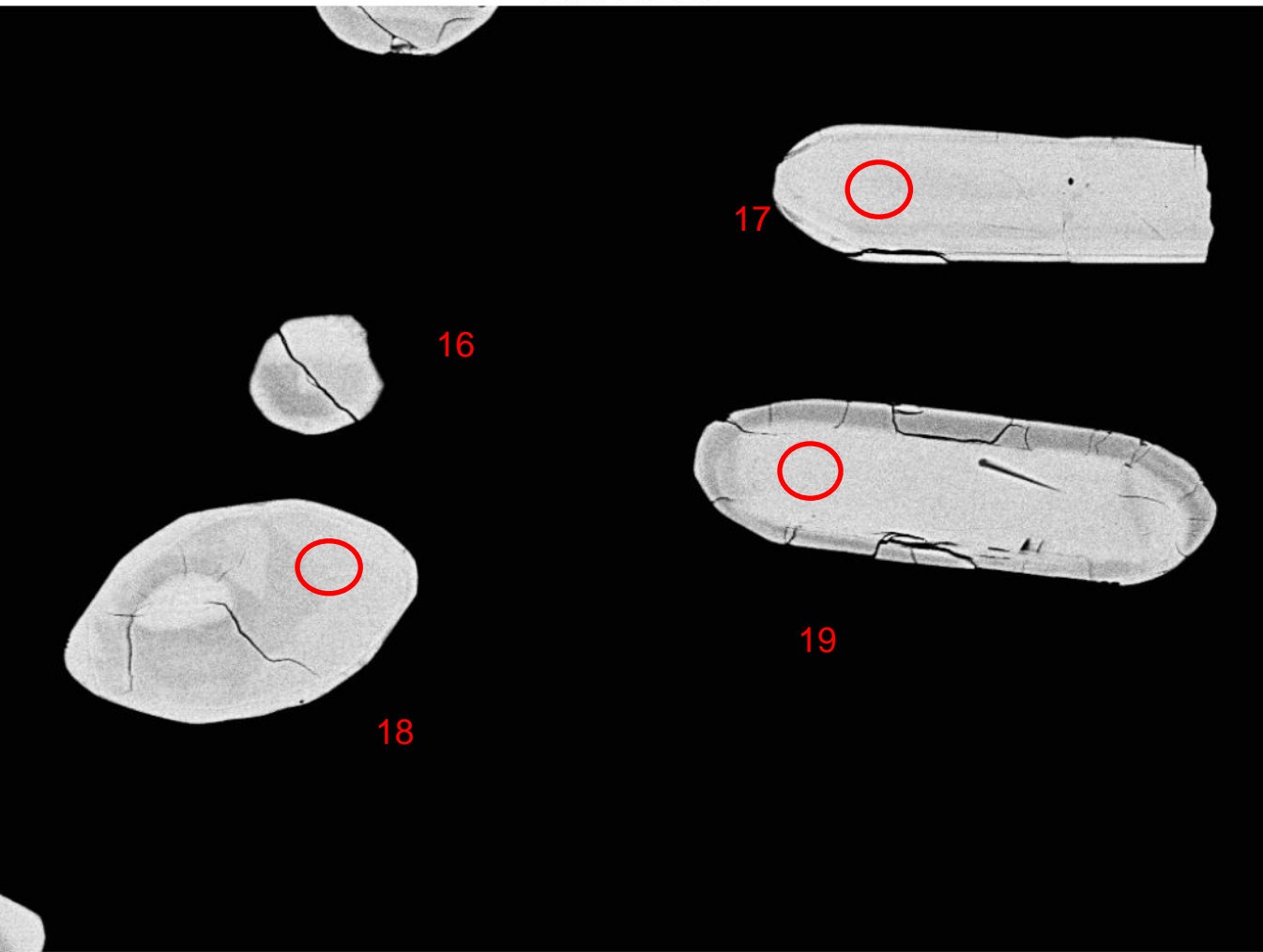
Det: CL

MIRA3 TESCAN

NRCan LMS GSC







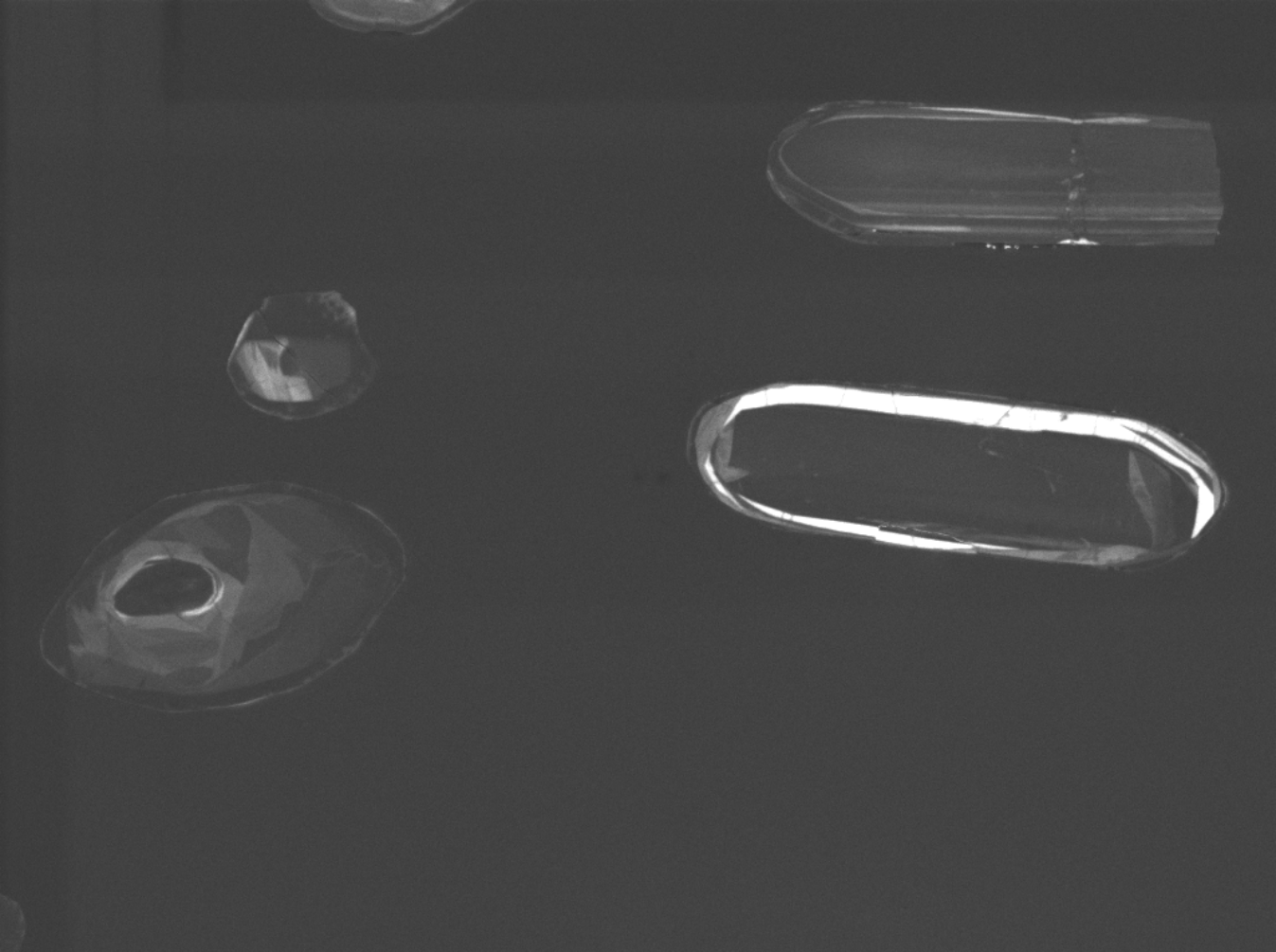
16

17

18

19

100µm



SEM HV: 10.0 kV

WD: 16.94 mm

View field: 306  $\mu\text{m}$

SEM MAG: 905 x



50  $\mu\text{m}$

MIRA3 TESCAN

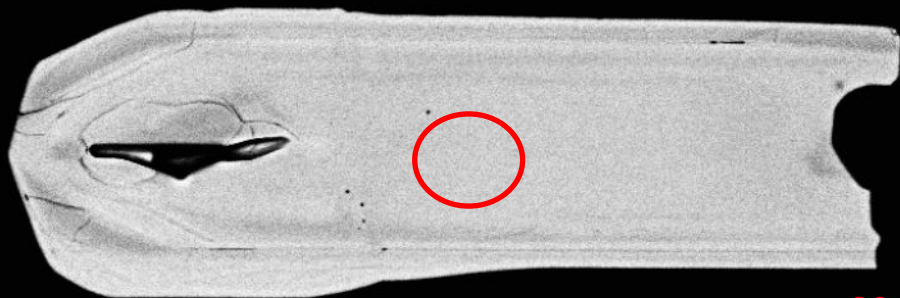
12624-05-cl

Det: CL

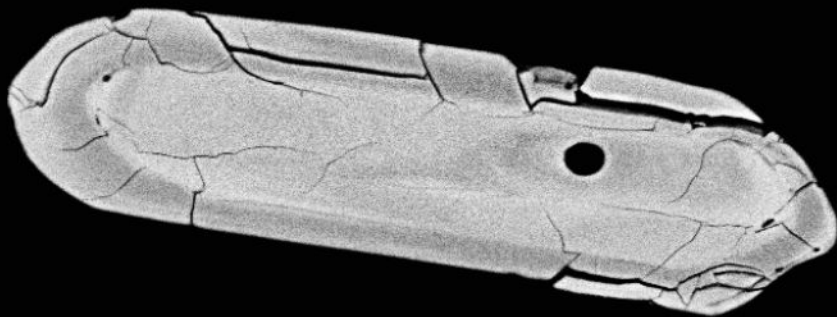
NRCan LMS GSC



12624-06-bse

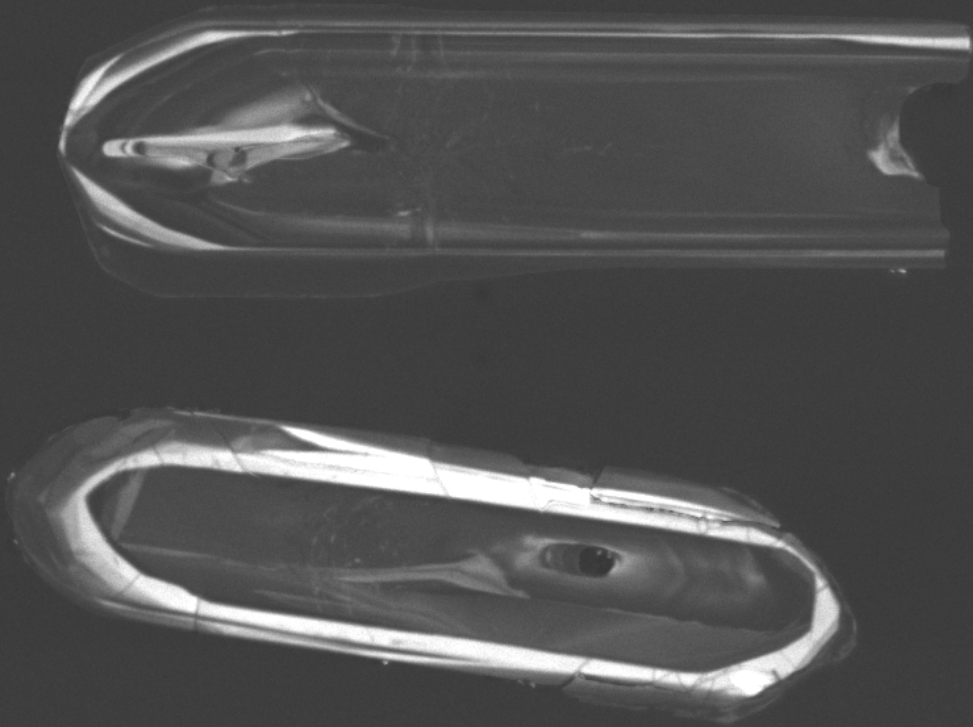


20



21

50µm



SEM HV: 10.0 kV

WD: 16.94 mm

View field: 216  $\mu\text{m}$

SEM MAG: 1.28 kx

50  $\mu\text{m}$

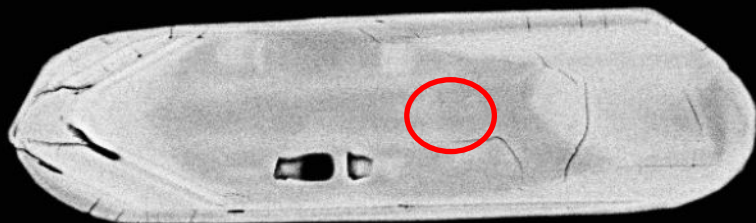
12624-06-cl

Det: CL

MIRA3 TESCAN

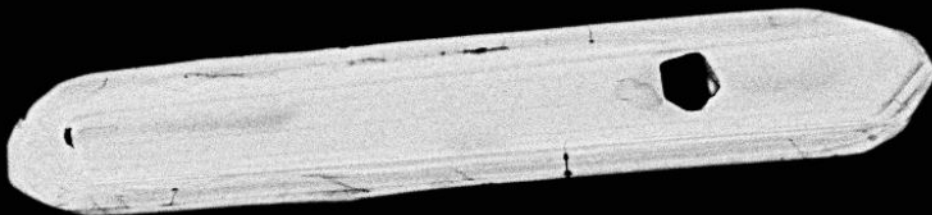
NRCan LMS GSC

12624-07-bse

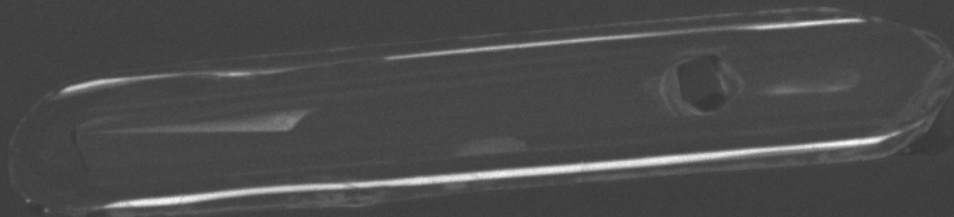
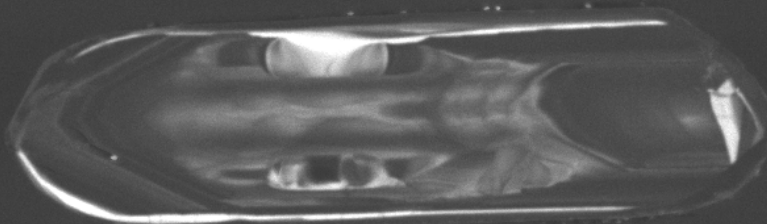


22

23



50µm



SEM HV: 10.0 kV

WD: 16.94 mm

View field: 233  $\mu\text{m}$

SEM MAG: 1.19 kx

50  $\mu\text{m}$

12624-07-cl

Det: CL

MIRA3 TESCAN

NRCan LMS GSC





24



25

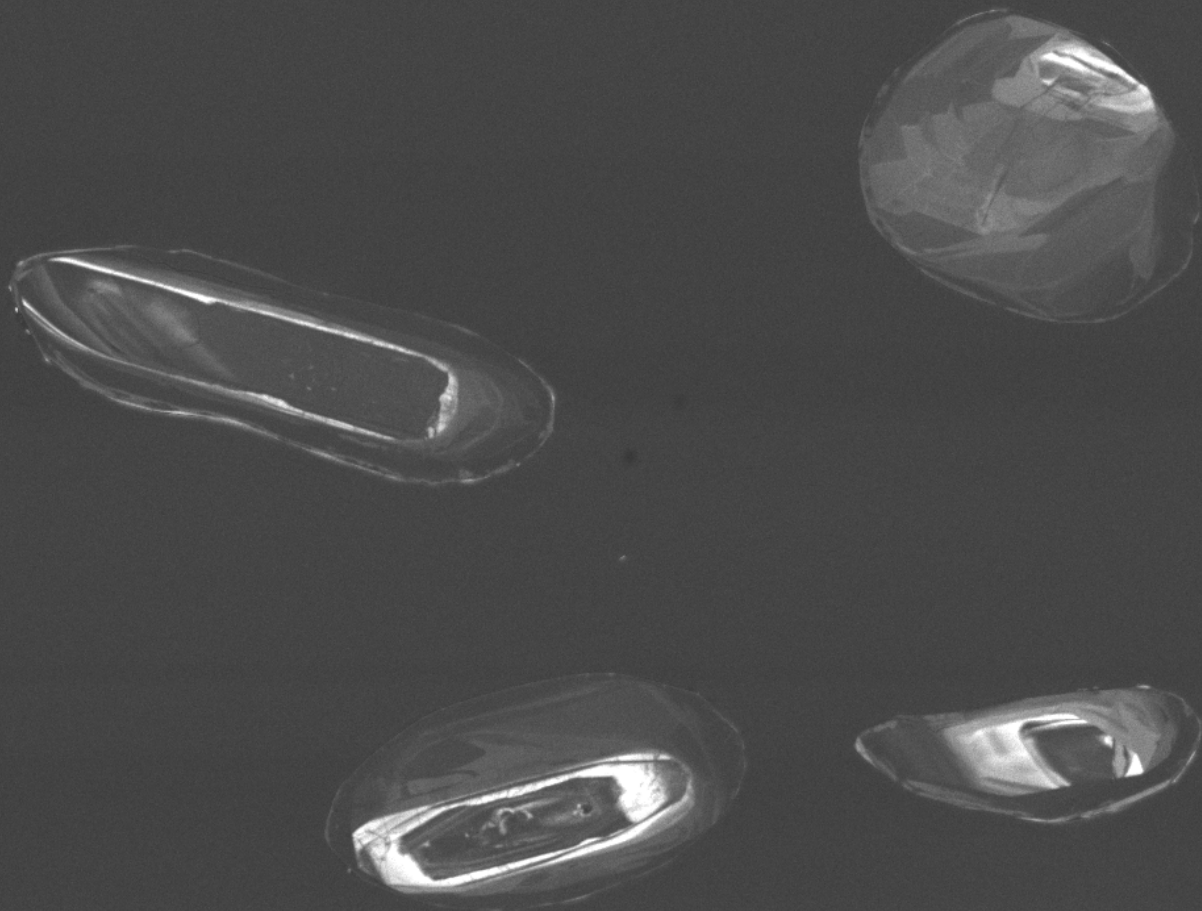


26



27

100µm



SEM HV: 10.0 kV

WD: 16.94 mm

View field: 316  $\mu\text{m}$

SEM MAG: 877 x

100  $\mu\text{m}$

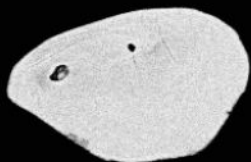
MIRA3 TESCAN

12624-08-cl

Det: CL

NRCan LMS GSC





28



29



30



31



32



33

100µm



SEM HV: 10.0 kV

WD: 16.94 mm

View field: 364  $\mu\text{m}$

SEM MAG: 761 x

12624-09-cl

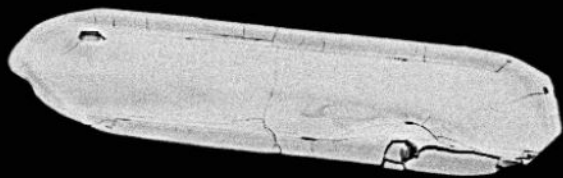
Det: CL



MIRA3 TESCAN

NRCan LMS GSC

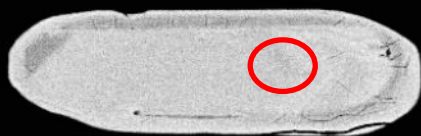




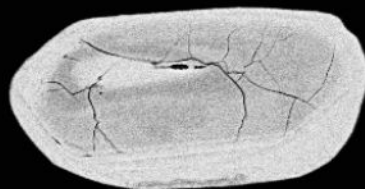
34



35



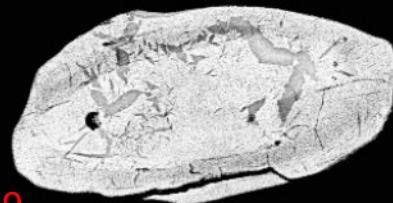
36



37

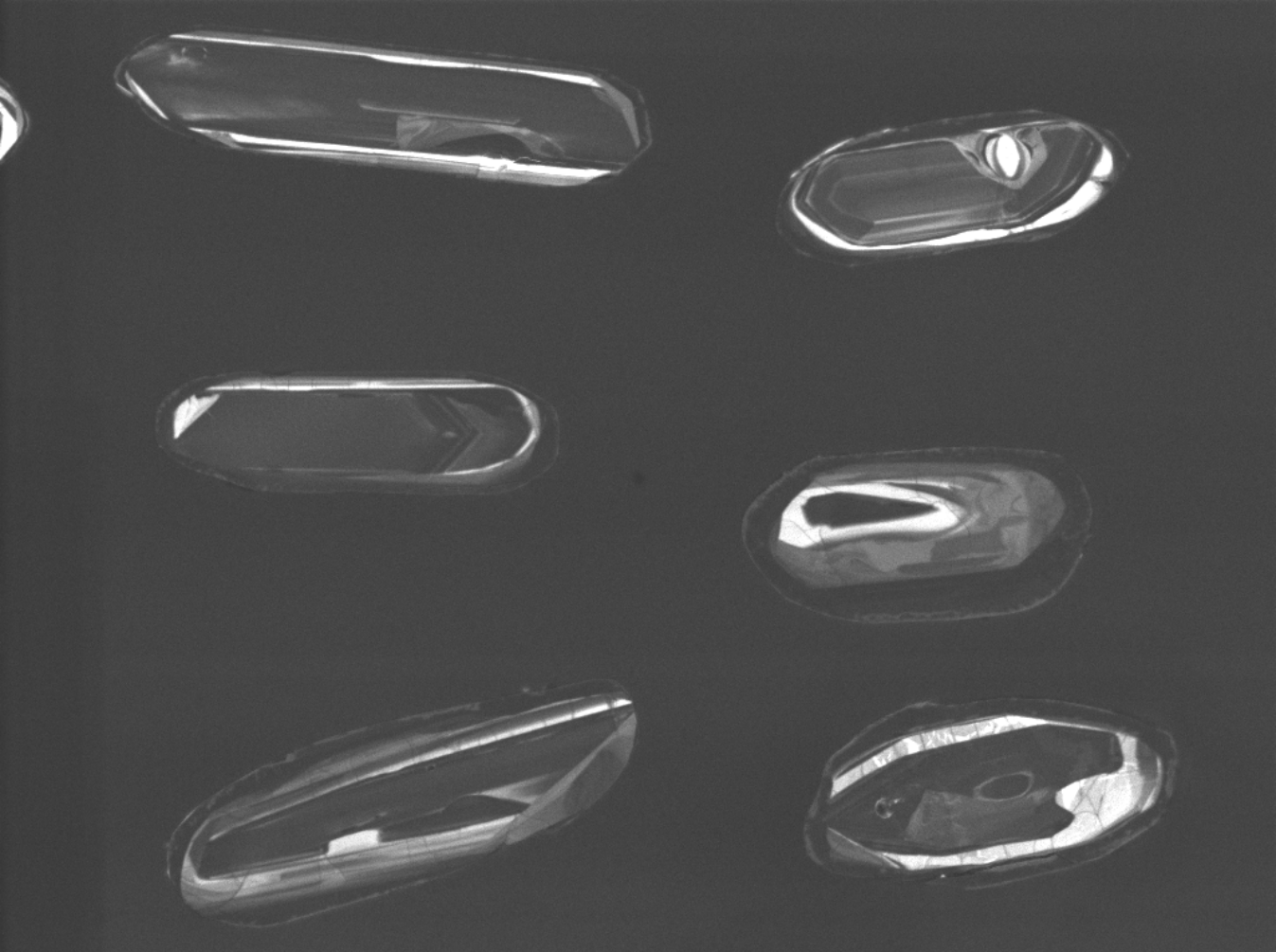


38



39

100µm



SEM HV: 10.0 kV

WD: 16.94 mm

View field: 343  $\mu\text{m}$

SEM MAG: 807 x

100  $\mu\text{m}$

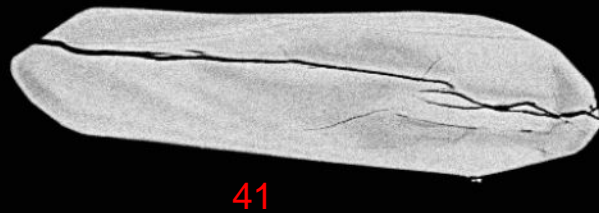
MIRA3 TESCAN

12624-10-cl

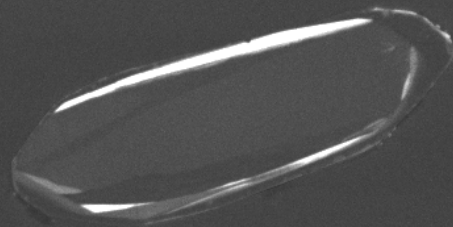
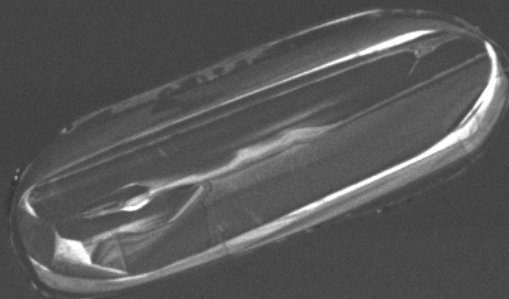
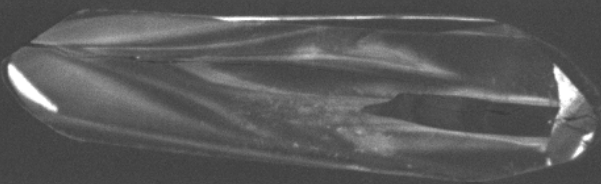
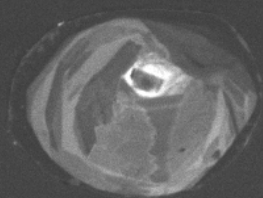
Det: CL

NRCan LMS GSC





100µm



SEM HV: 10.0 kV

WD: 16.94 mm

View field: 340  $\mu\text{m}$

SEM MAG: 814 x

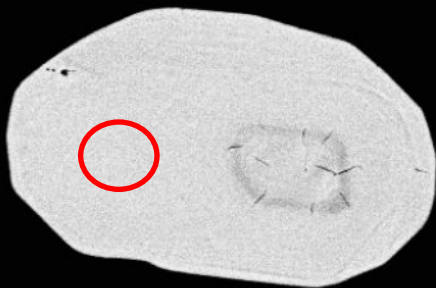
12624-11-cl-b

Det: CL

100  $\mu\text{m}$

MIRA3 TESCAN

NRCan LMS GSC



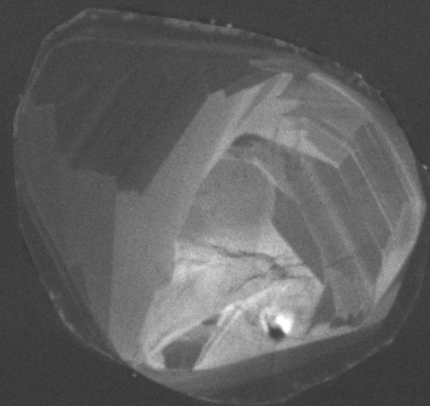
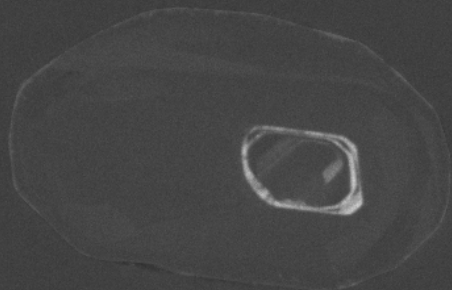
44

45



46

50µm



SEM HV: 10.0 kV

WD: 16.94 mm

View field: 249  $\mu\text{m}$

SEM MAG: 1.11 kx

12624-12-cl-b

Det: CL

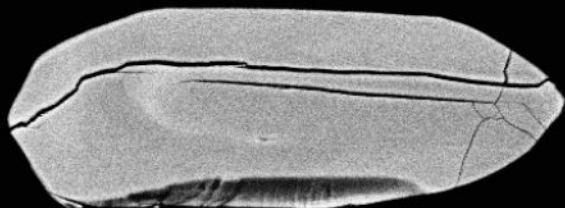


50  $\mu\text{m}$

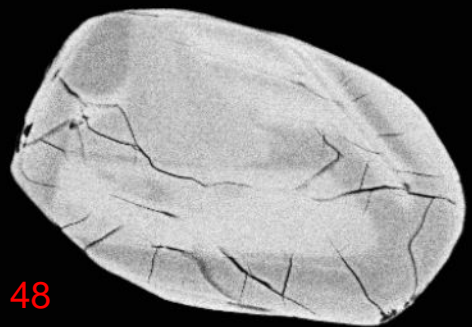
MIRA3 TESCAN

NRCan LMS GSC





47



48

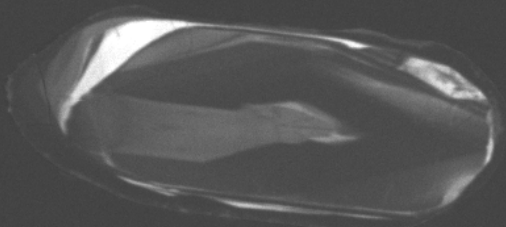
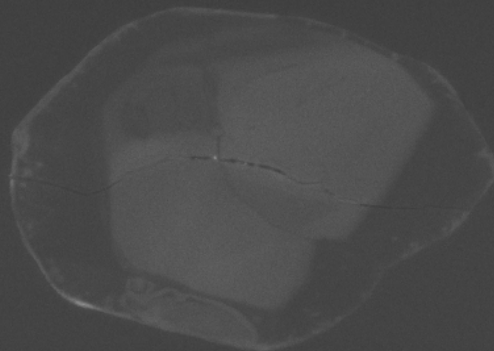
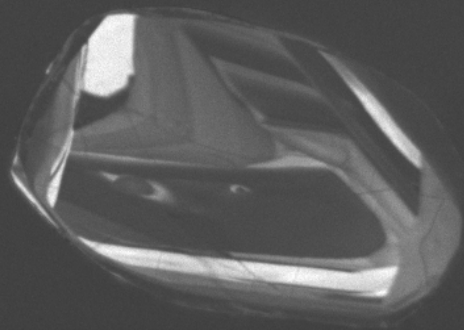
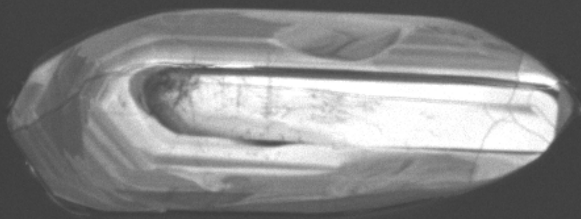


50



49

100µm



SEM HV: 10.0 kV

WD: 16.94 mm

View field: 259  $\mu\text{m}$

SEM MAG: 1.07 kx

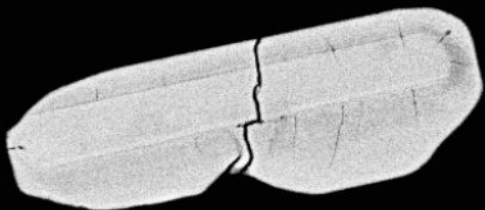
50  $\mu\text{m}$

12624-13-cl

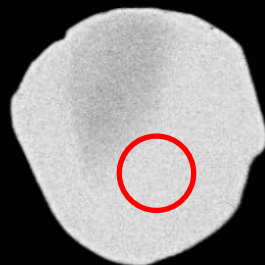
Det: CL

MIRA3 TESCAN

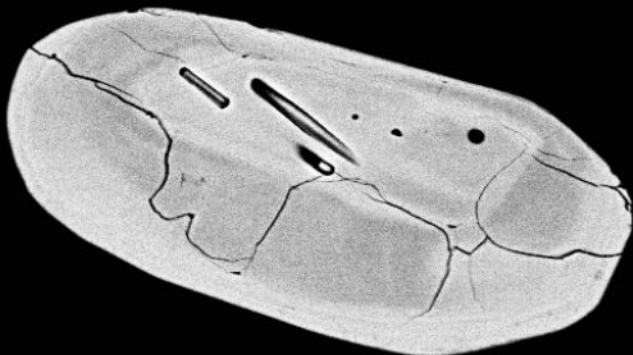
NRCan LMS GSC



51

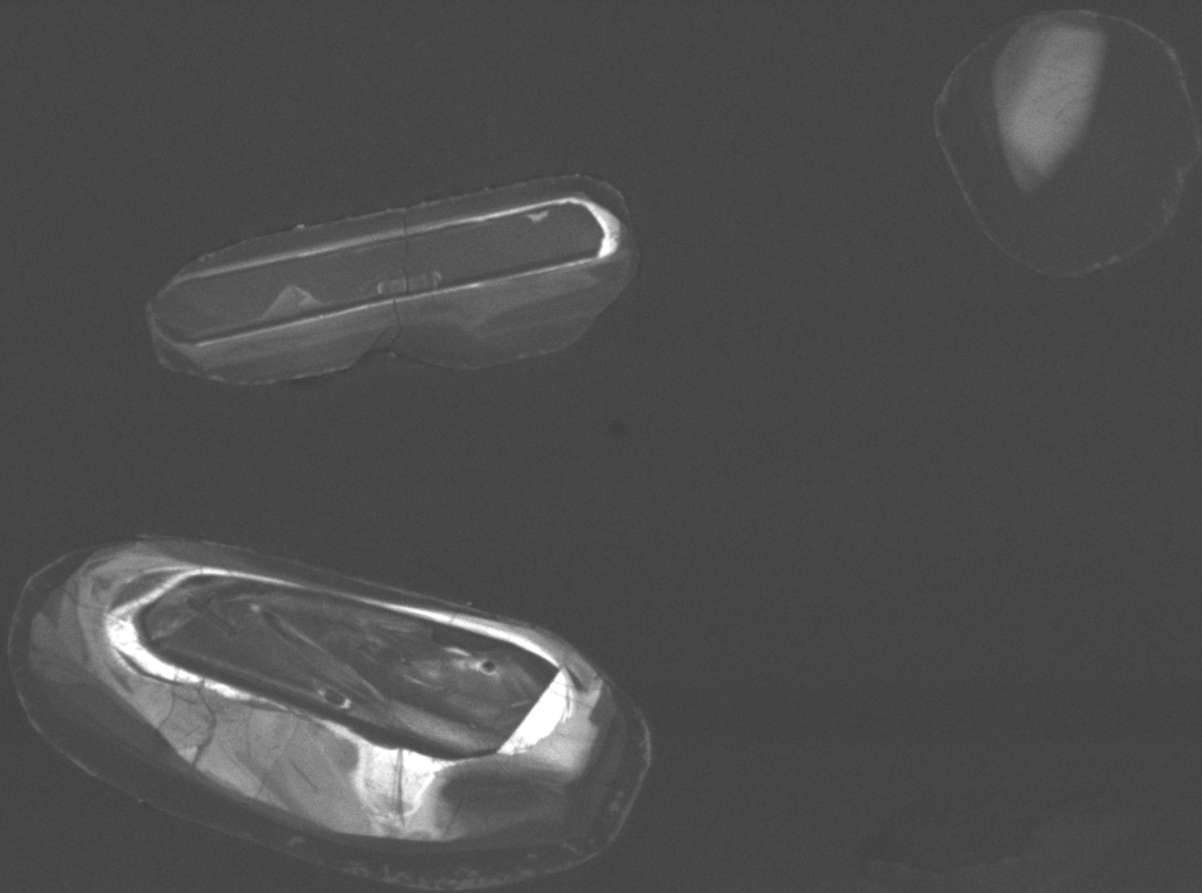


52



53

100µm



SEM HV: 10.0 kV

WD: 16.94 mm

View field: 252  $\mu\text{m}$

SEM MAG: 1.10 kx

50  $\mu\text{m}$

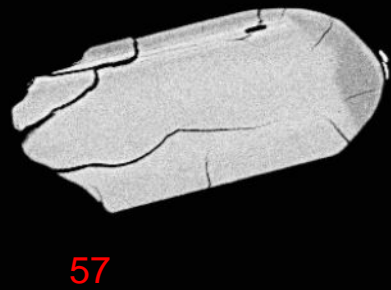
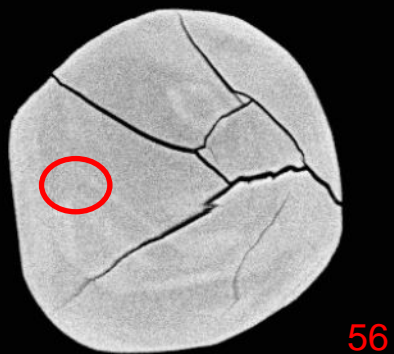
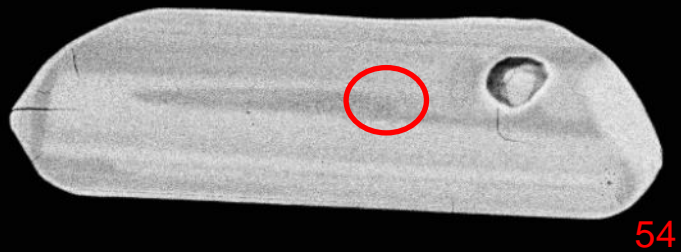
12624-14-cl

Det: CL

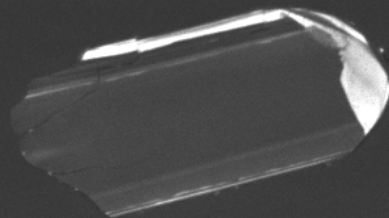
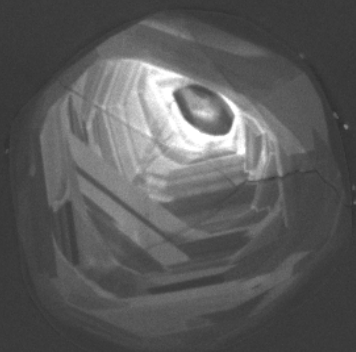
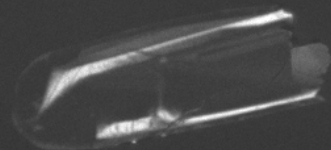
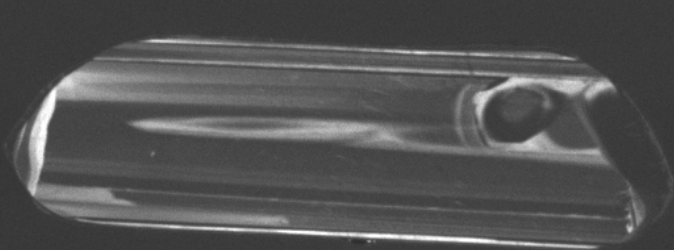
MIRA3 TESCAN

NRCan LMS GSC





100µm



SEM HV: 10.0 kV

WD: 16.94 mm

View field: 301  $\mu\text{m}$

SEM MAG: 921 x

12624-15-cl

Det: CL

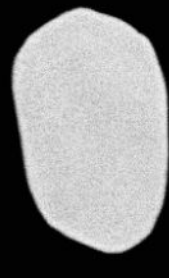
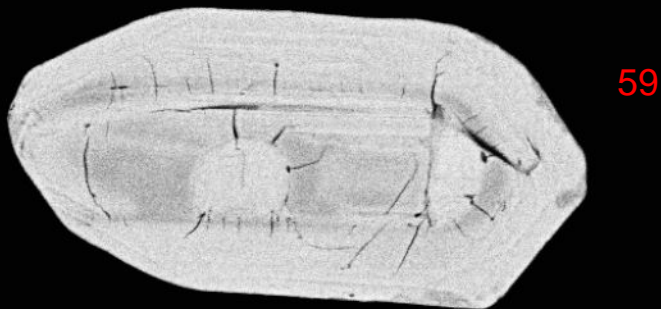


50  $\mu\text{m}$

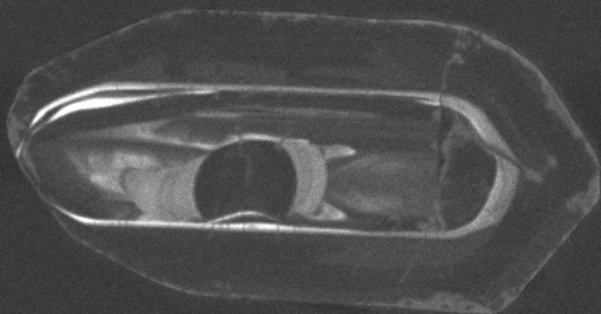
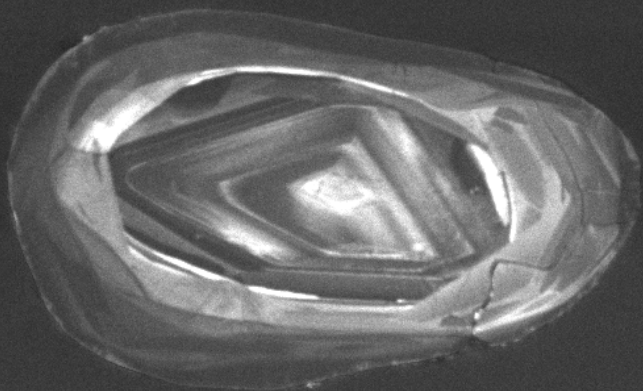
MIRA3 TESCAN

NRCan LMS GSC





50µm



SEM HV: 10.0 kV

WD: 16.94 mm

View field: 225  $\mu$ m

SEM MAG: 1.23 kx

50  $\mu$ m

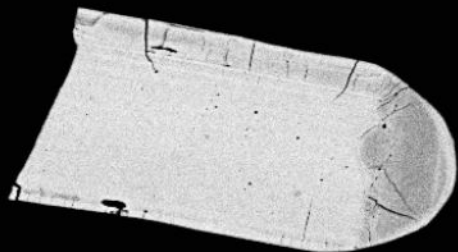
12624-16-cl

Det: CL

MIRA3 TESCAN

NRCan LMS GSC





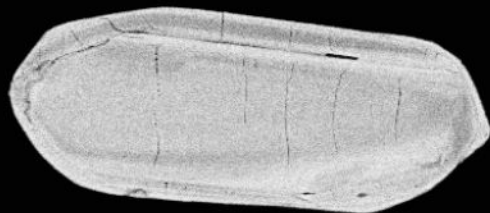
61



62

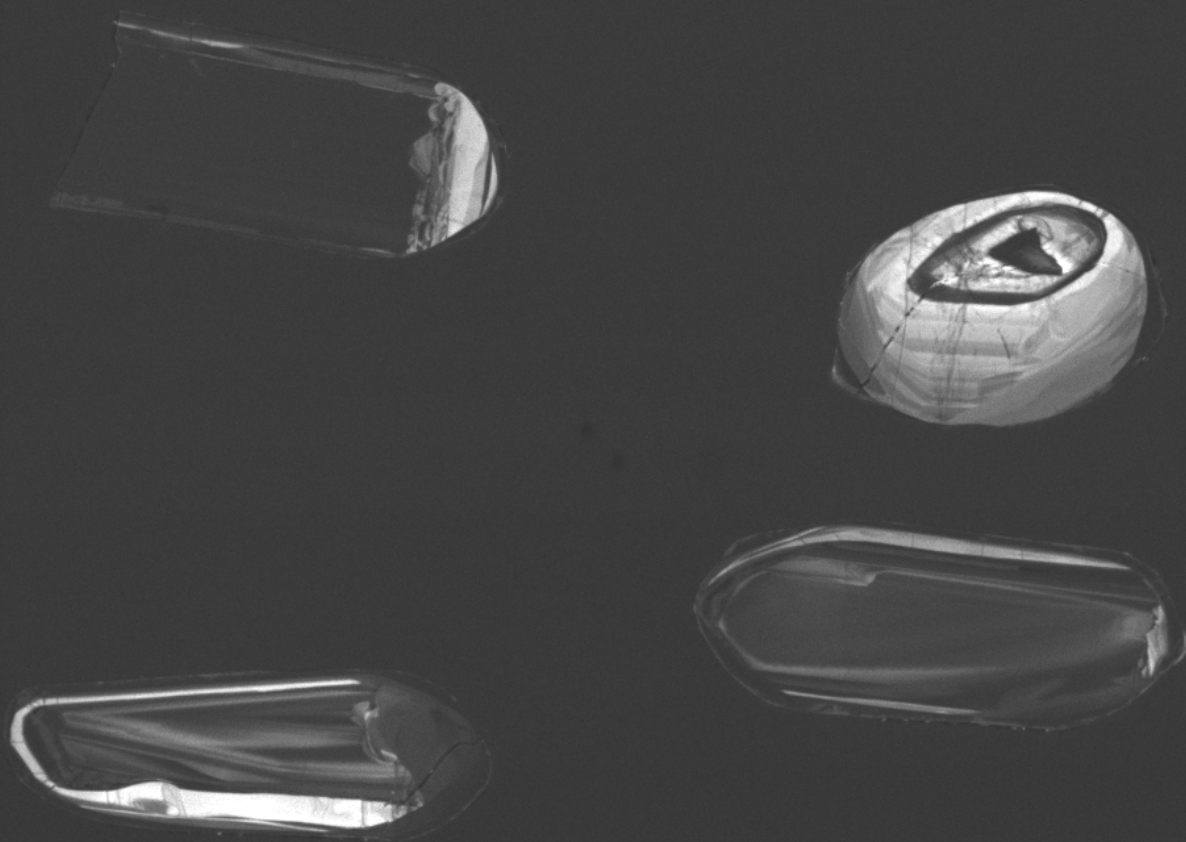


63



64

100µm



SEM HV: 10.0 kV

WD: 16.94 mm

MIRA3 TESCAN

View field: 328  $\mu\text{m}$

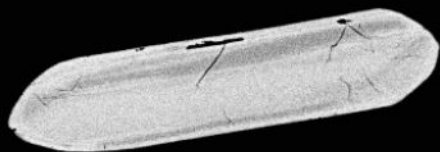
SEM MAG: 844 x

100  $\mu\text{m}$

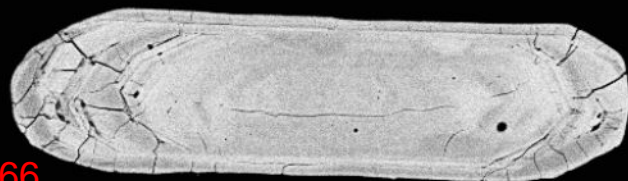
12624-17-cl

Det: CL

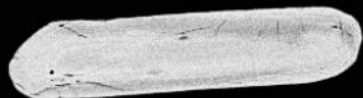
NRCan LMS GSC



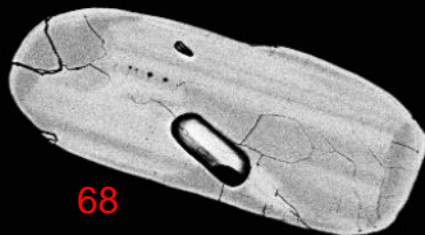
65



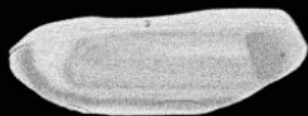
66



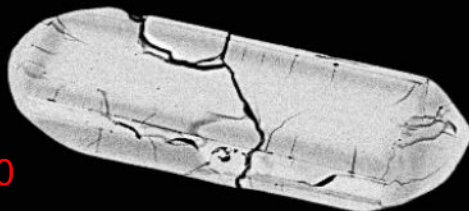
67



68

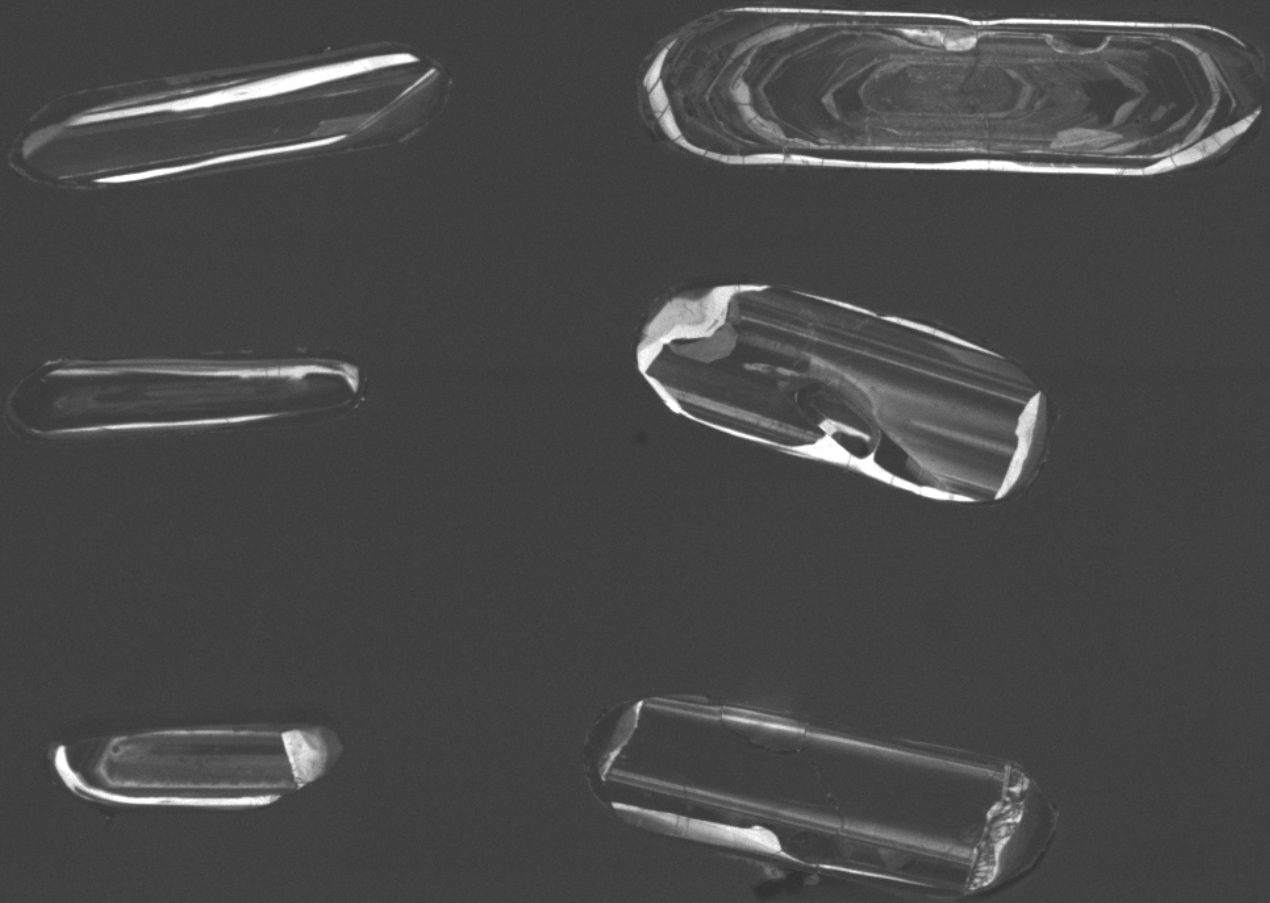


69



70

100µm



SEM HV: 10.0 kV

WD: 16.94 mm

View field: 389  $\mu\text{m}$

SEM MAG: 712 x

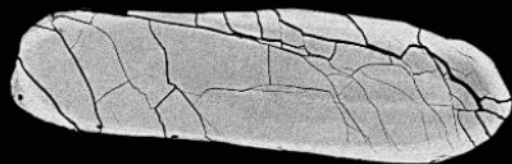
100  $\mu\text{m}$

MIRA3 TESCAN

12624-18-cl

Det: CL

NRCan LMS GSC



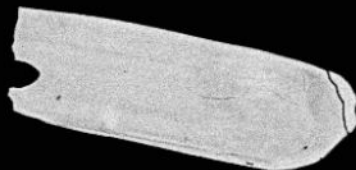
71



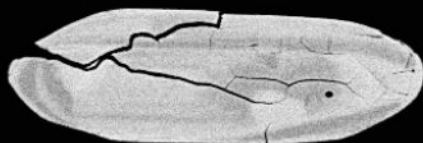
72



73



74



75



76

100µm



SEM HV: 10.0 kV

WD: 16.94 mm

View field: 393  $\mu$ m

SEM MAG: 705 x

100  $\mu$ m

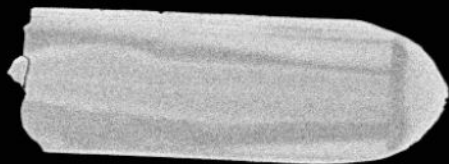
MIRA3 TESCAN

12624-19-cl

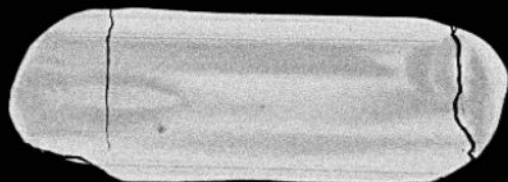
Det: CL

NRCan LMS GSC





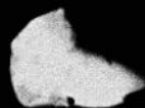
77



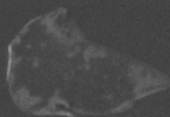
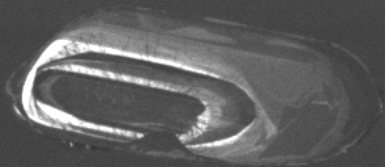
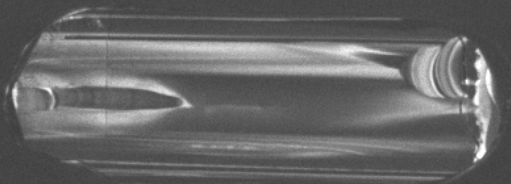
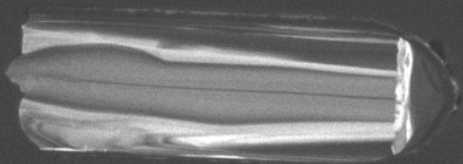
78



79



100µm



SEM HV: 10.0 kV

WD: 16.94 mm

View field: 370  $\mu$ m

SEM MAG: 748 x

100  $\mu$ m

MIRA3 TESCAN

12624-20-cl

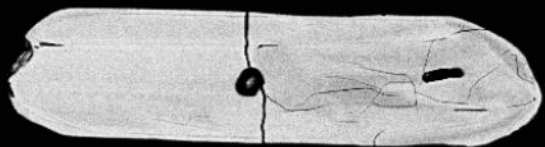
Det: CL

NRCan LMS GSC

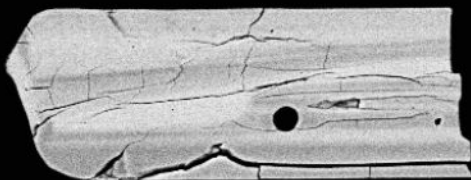




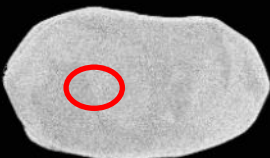
80



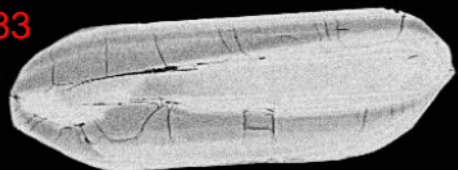
81



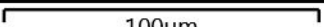
82

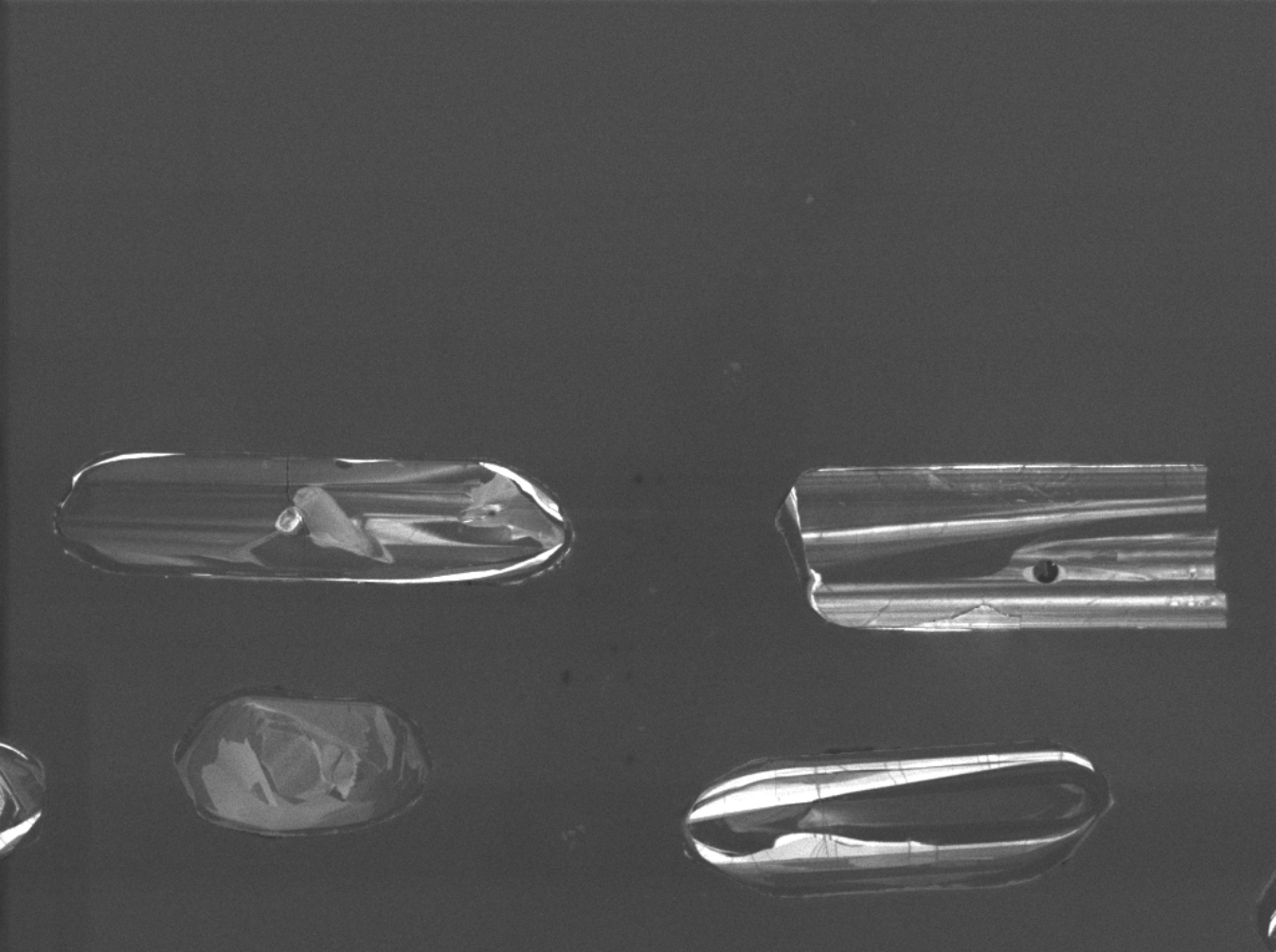


83



100µm





SEM HV: 10.0 kV

WD: 16.94 mm

View field: 428  $\mu\text{m}$

SEM MAG: 646 x



100  $\mu\text{m}$

MIRA3 TESCAN

12624-21-cl

Det: CL

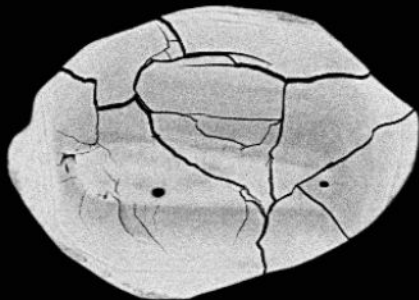
NRCan LMS GSC



84



85

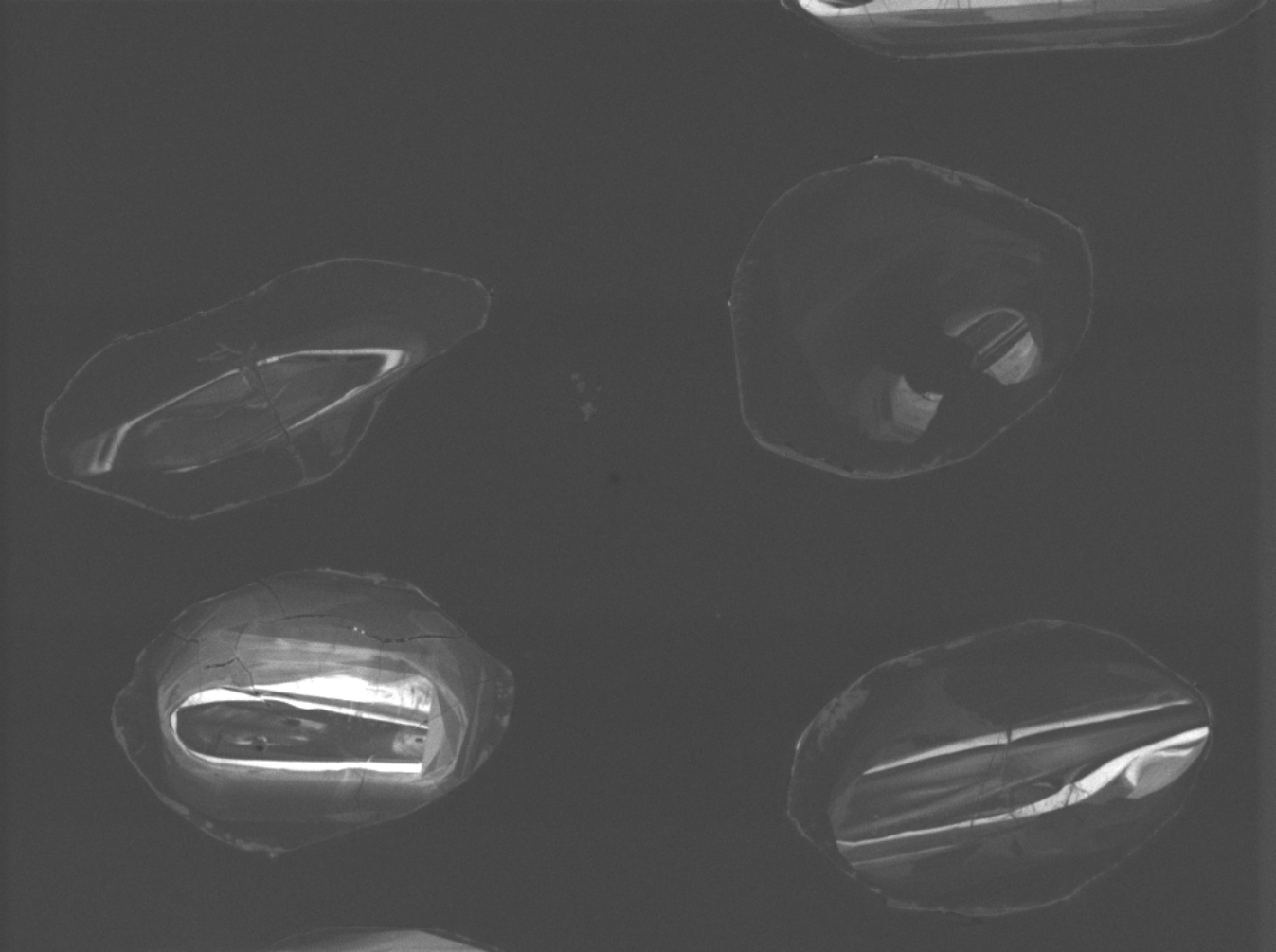


86



87

100µm



SEM HV: 10.0 kV

WD: 16.94 mm

View field: 345  $\mu\text{m}$

SEM MAG: 803 x

100  $\mu\text{m}$

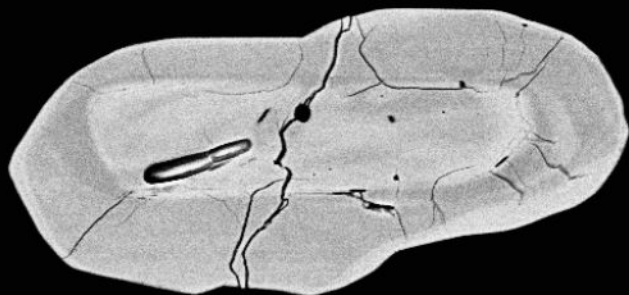
MIRA3 TESCAN

12624-22-cl

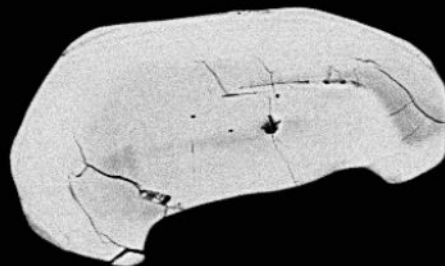
Det: CL

NRCan LMS GSC





88



89

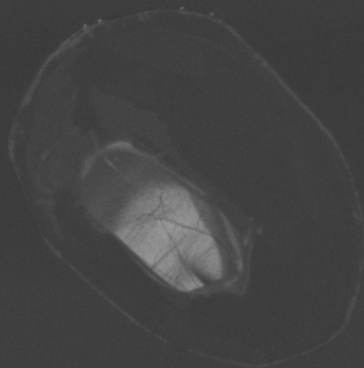
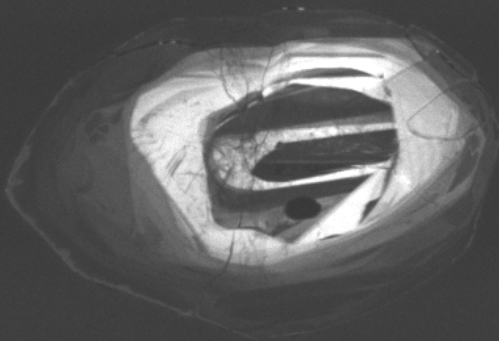
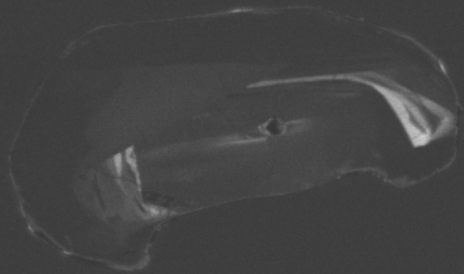
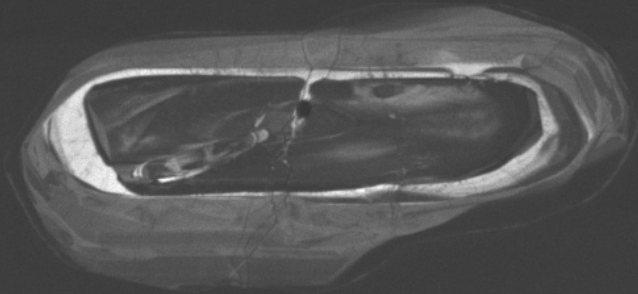


90



91

100µm



SEM HV: 10.0 kV

WD: 16.94 mm

View field: 334  $\mu\text{m}$

SEM MAG: 828 x

100  $\mu\text{m}$

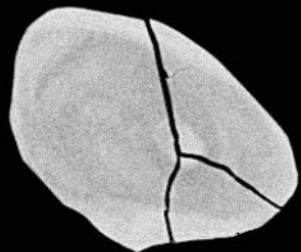
MIRA3 TESCAN

12624-23-cl

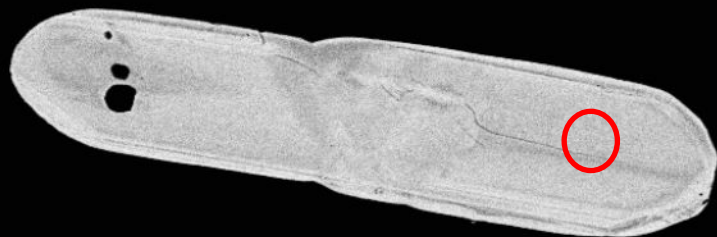
Det: CL

NRCan LMS GSC





92



93

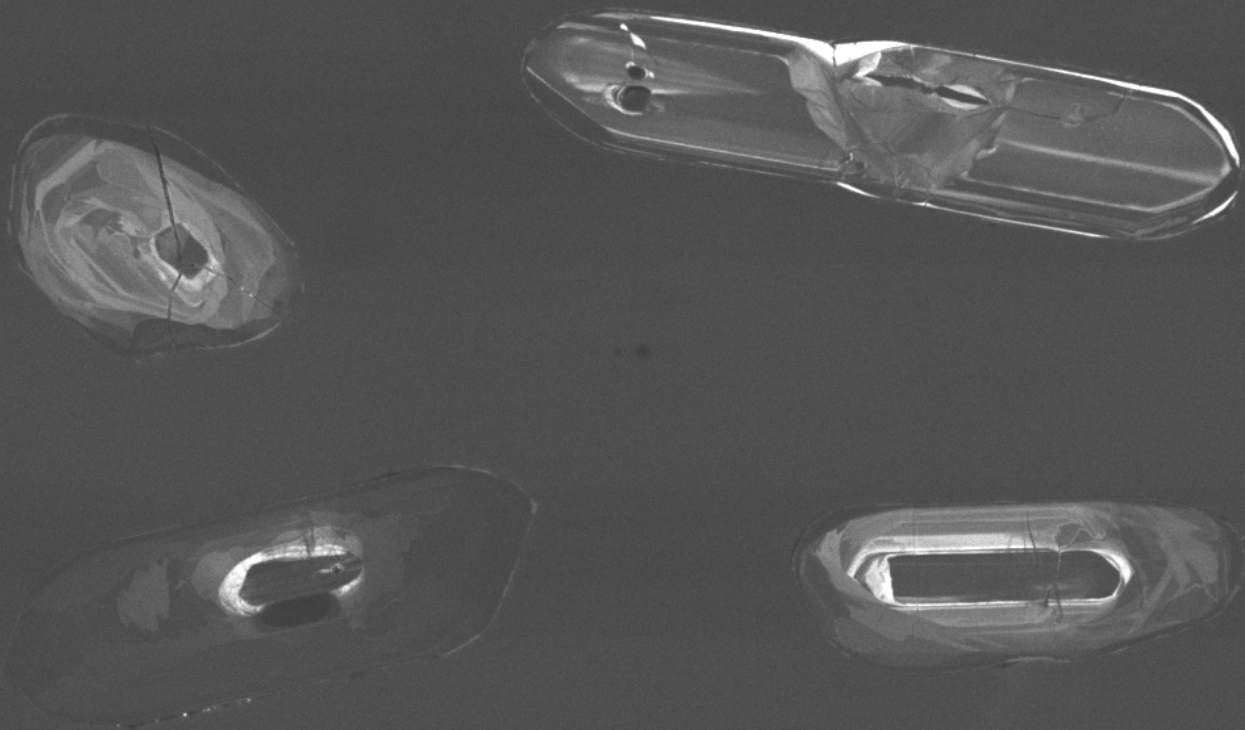


94



95

100µm



SEM HV: 10.0 kV

WD: 16.94 mm

View field: 386  $\mu\text{m}$

SEM MAG: 718 x

100  $\mu\text{m}$

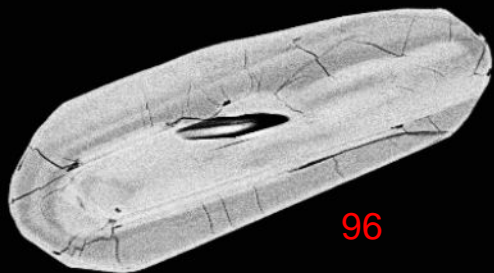
MIRA3 TESCAN

12624-24-cl

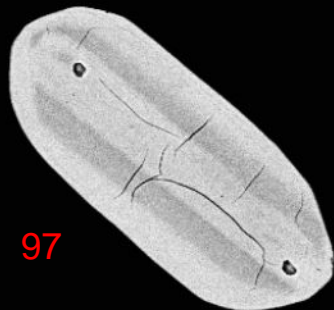
Det: CL

NRCan LMS GSC

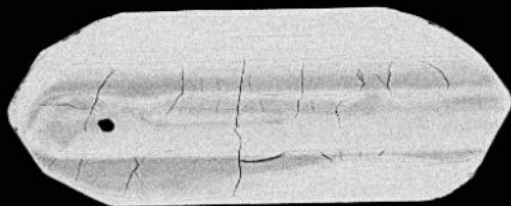




96



97



98



99

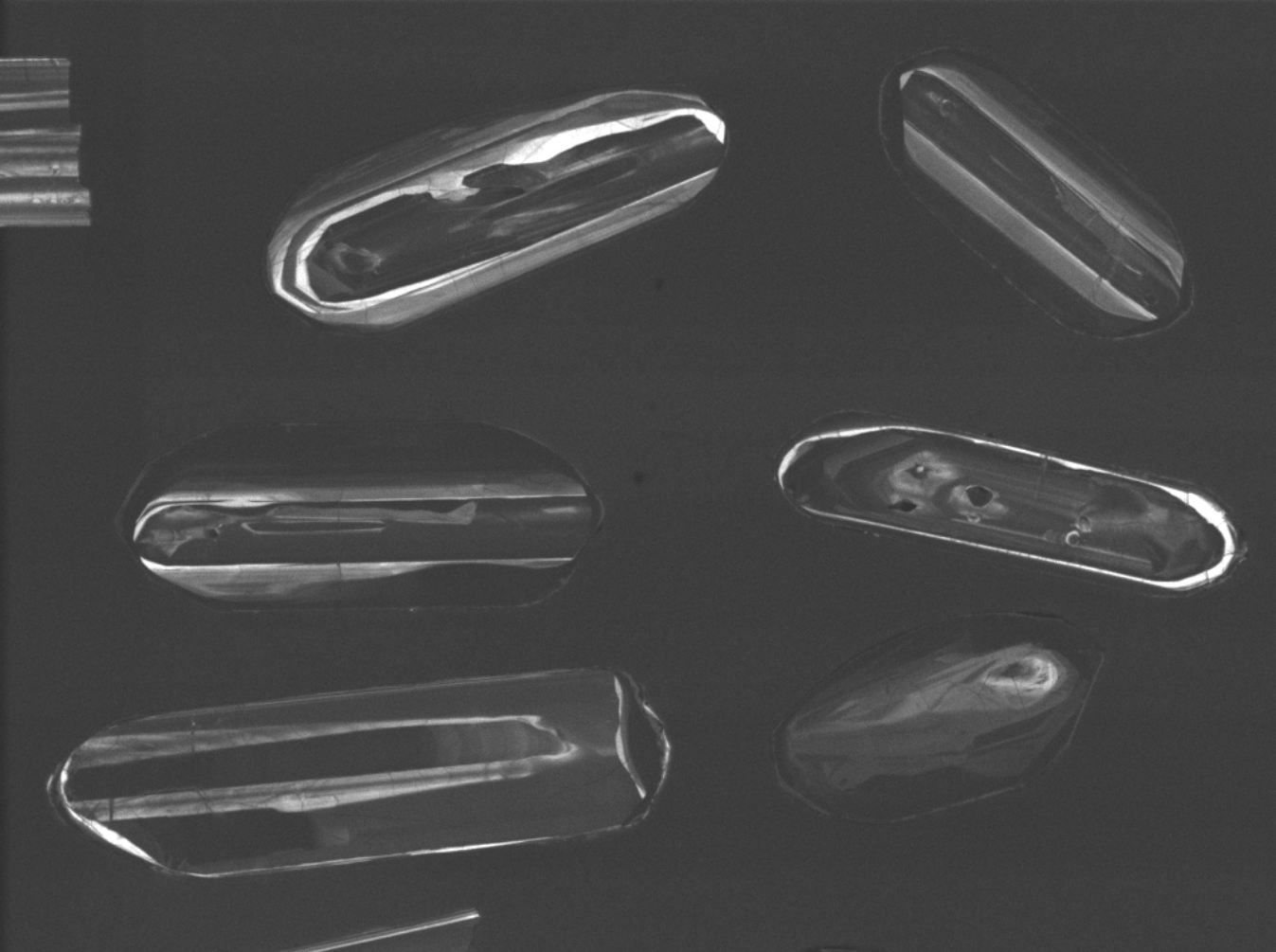


100



101

100µm



SEM HV: 10.0 kV

WD: 16.94 mm

View field: 419  $\mu\text{m}$

SEM MAG: 660 x

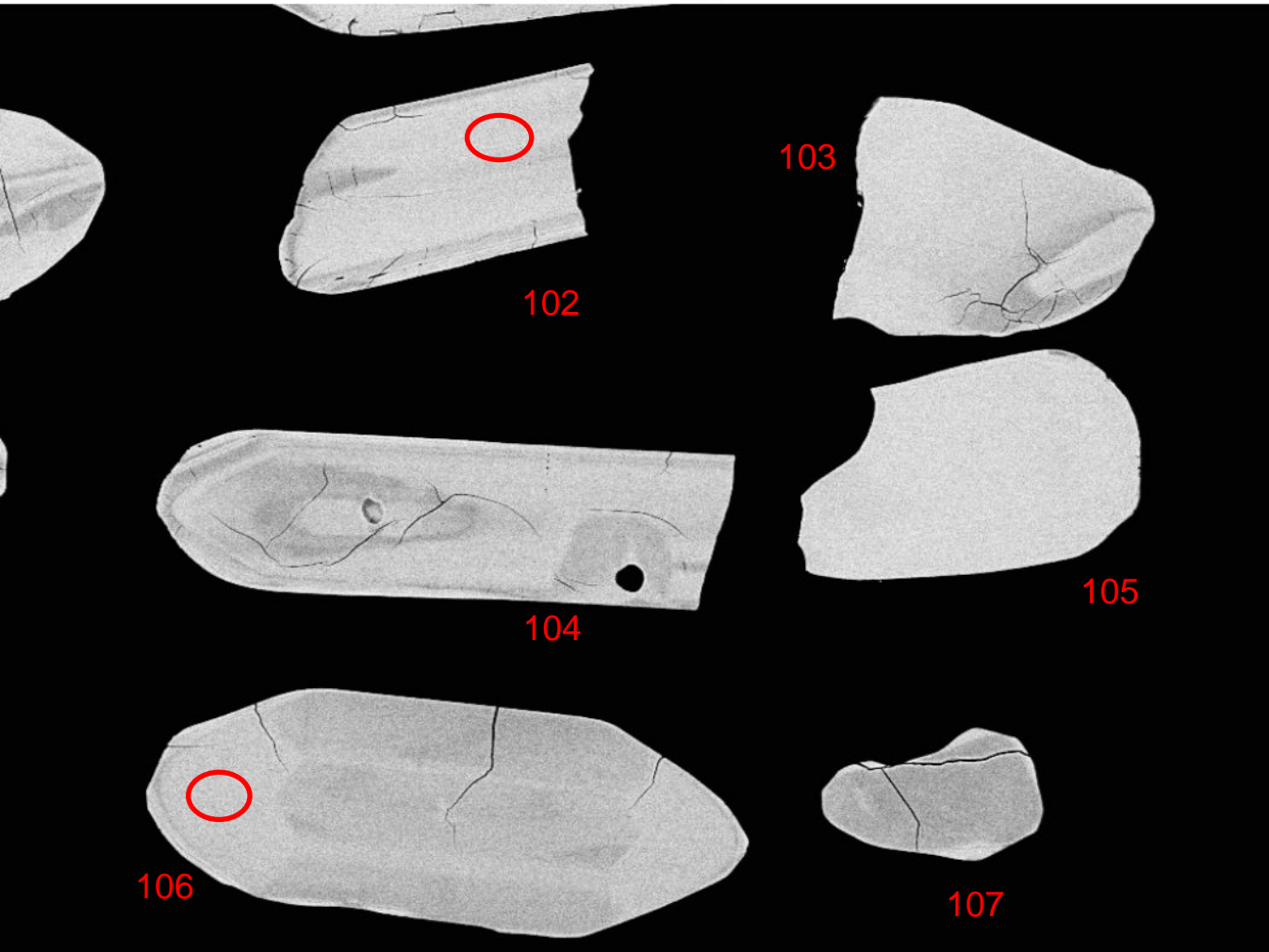
100  $\mu\text{m}$

12624-25-cl

Det: CL

MIRA3 TESCAN

NRCan LMS GSC



102

103

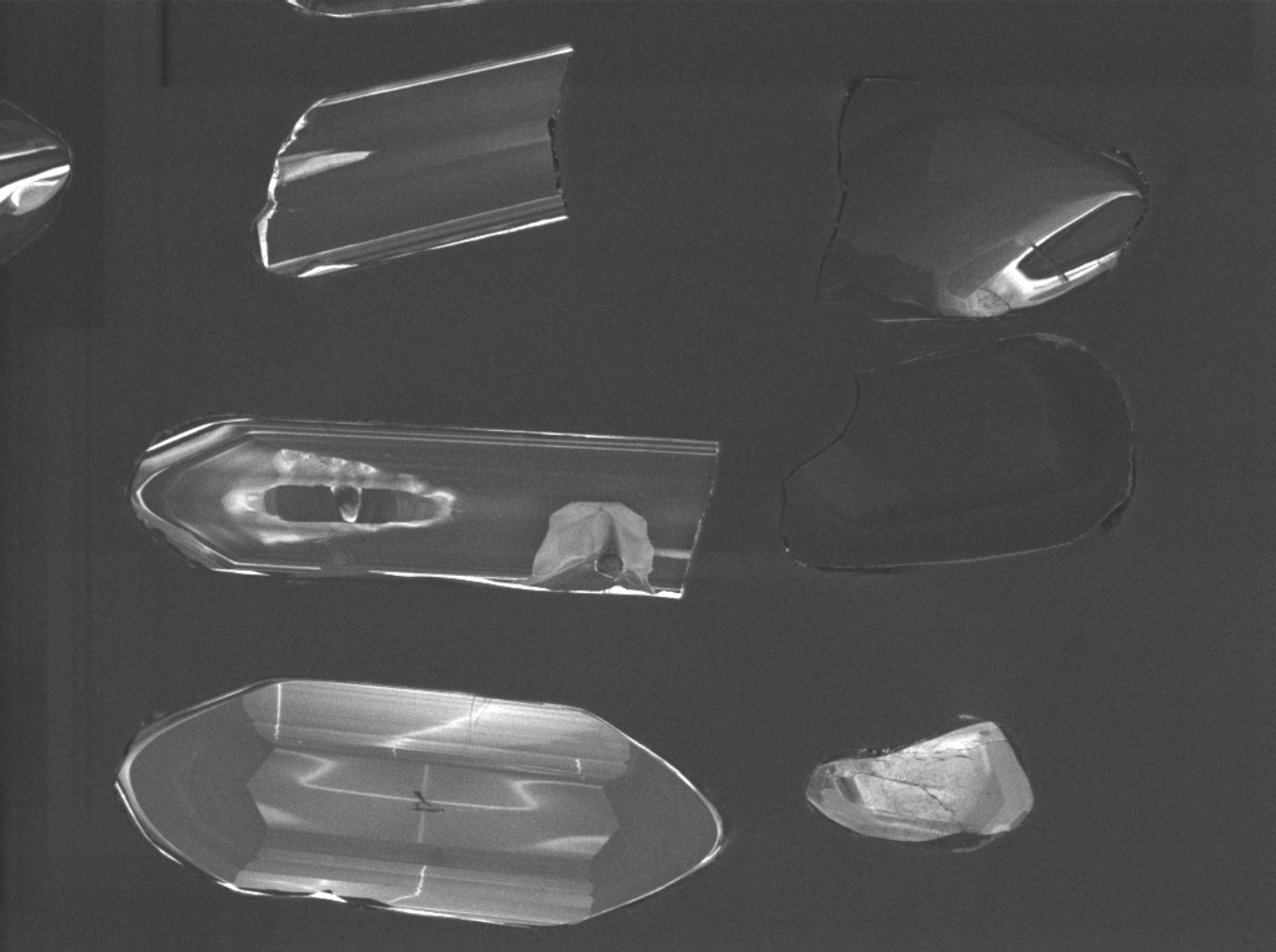
105

104

106

107

100µm



SEM HV: 10.0 kV

WD: 16.94 mm

View field: 492  $\mu\text{m}$

SEM MAG: 562 x

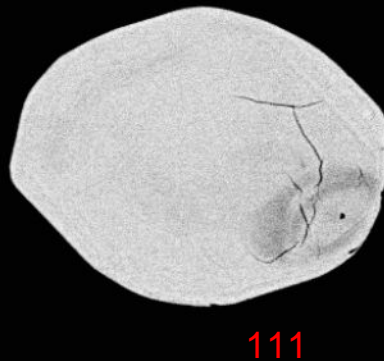
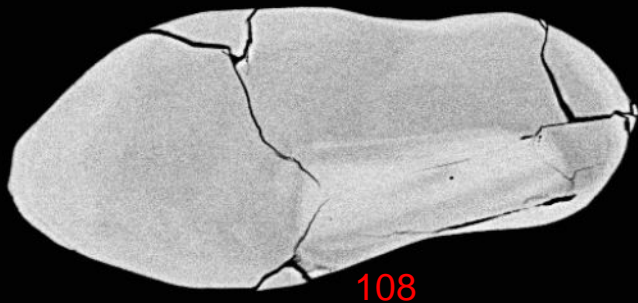
100  $\mu\text{m}$

12624-26-cl

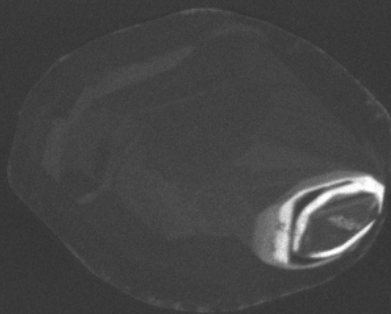
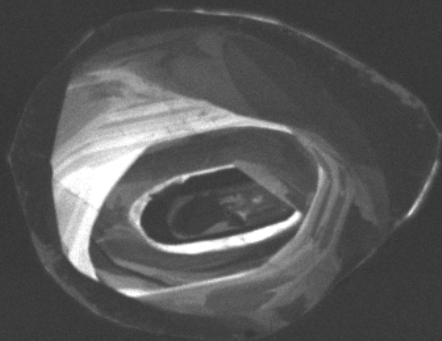
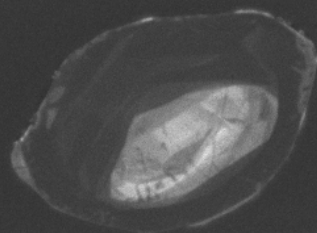
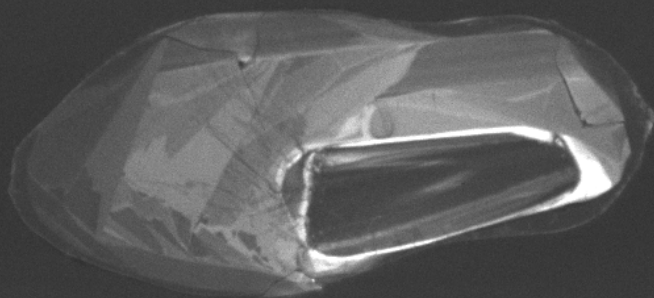
Det: CL

MIRA3 TESCAN

NRCan LMS GSC



100µm



SEM HV: 10.0 kV

WD: 16.94 mm

View field: 288  $\mu\text{m}$

SEM MAG: 962 x

50  $\mu\text{m}$

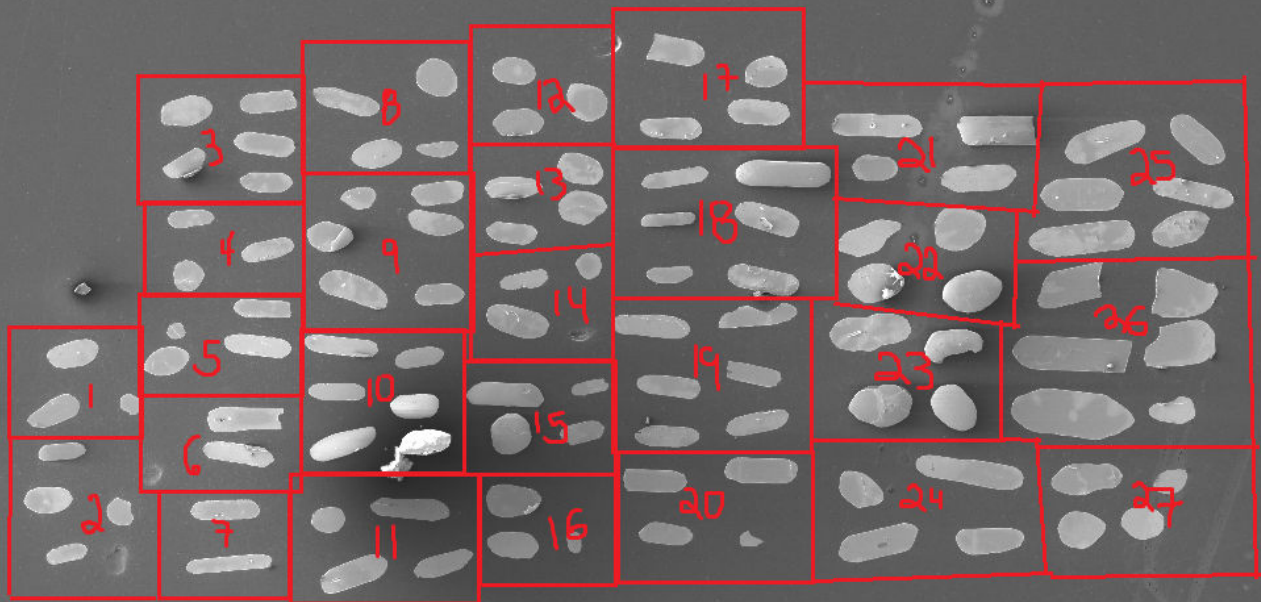
12624-27-cl

Det: CL

MIRA3 TESCAN

NRCan LMS GSC





SEM HV: 10.0 kV

WD: 49.69 mm

View field: 2.59 mm

SEM MAG: 107 x

500  $\mu$ m

12624-map

Det: SE

MIRA3 TESCAN

NRCan LMS GSC