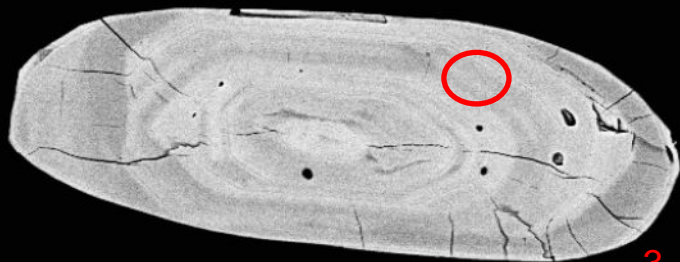


1



2

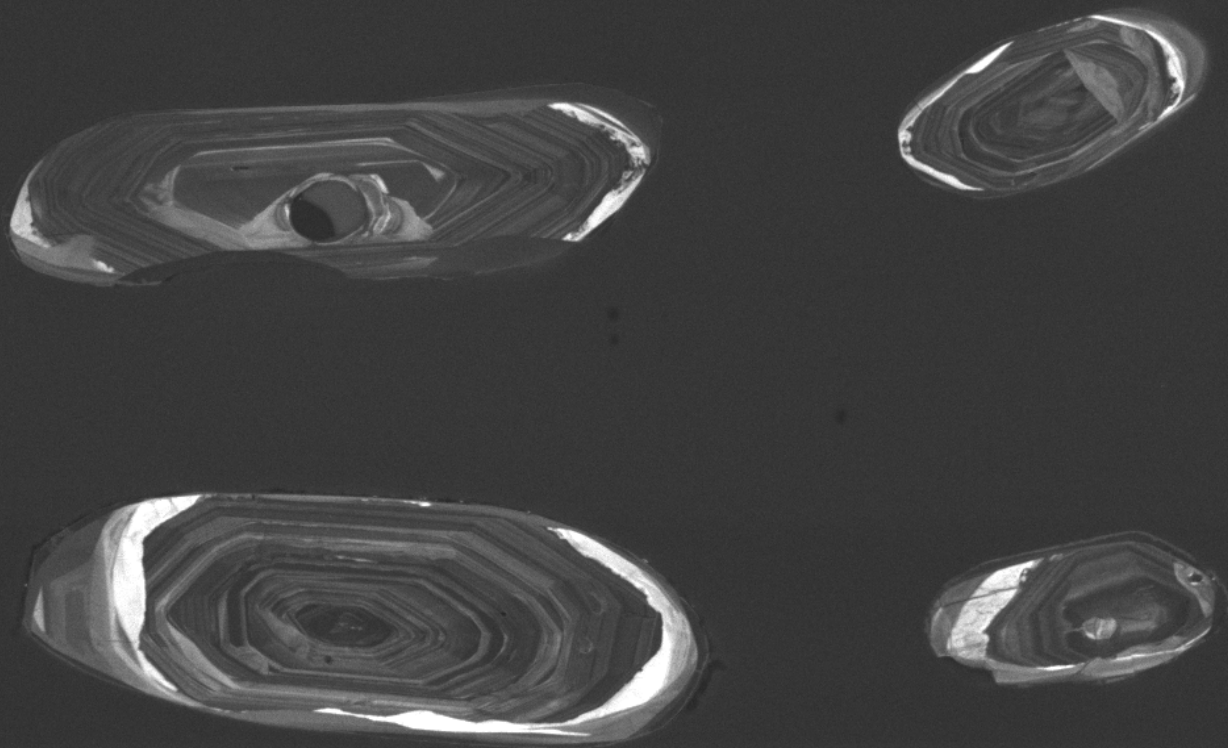


3



4

100µm



SEM HV: 10.0 kV

WD: 16.96 mm

View field: 384 μm

SEM MAG: 721 x

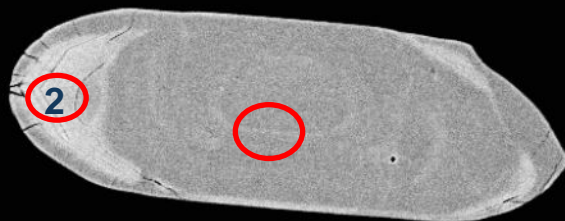
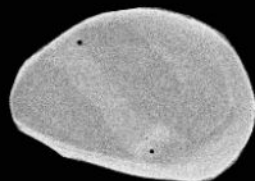
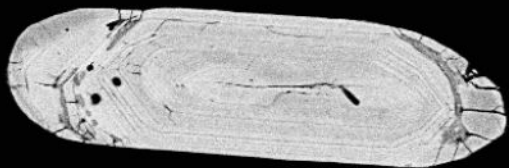
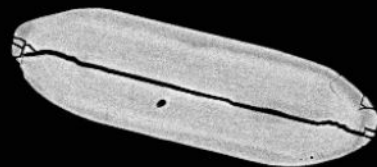
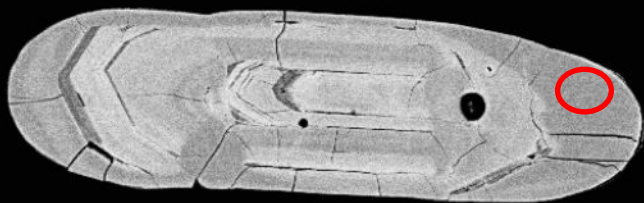
100 μm

MIRA3 TESCAN

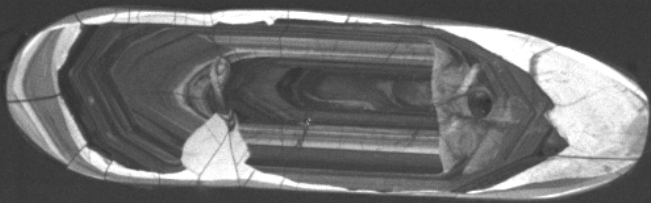
12626-01-cl

Det: CL

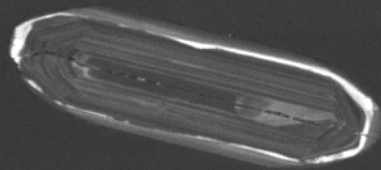
NRCan LMS GSC



100µm



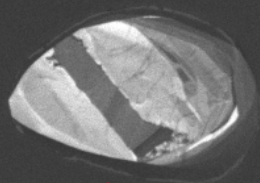
5



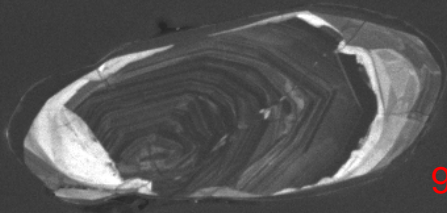
6



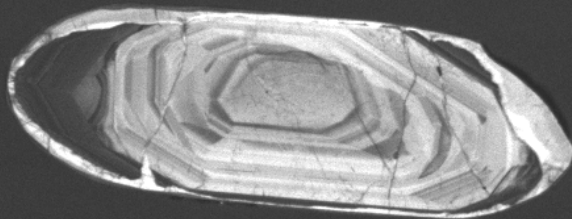
7



8



9



10

SEM HV: 10.0 kV

WD: 16.96 mm

View field: 408 μ m

SEM MAG: 679 x

100 μ m

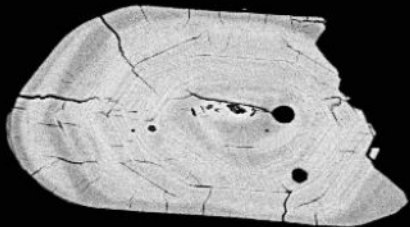
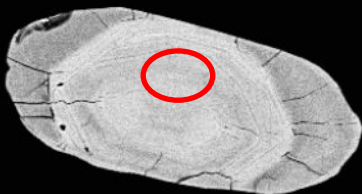
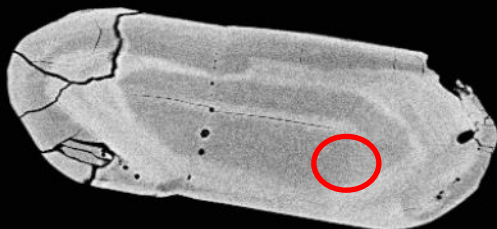
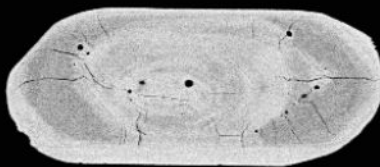
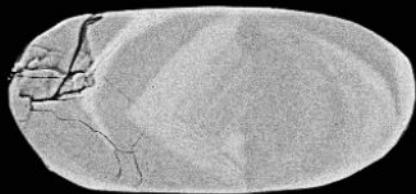
MIRA3 TESCAN

12626-02-cl

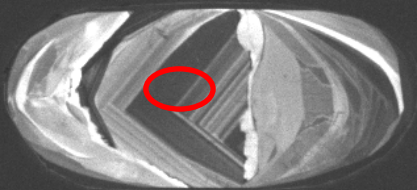
Det: CL

NRCan LMS GSC

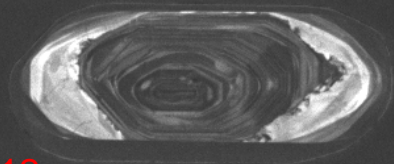
12626-03-bse



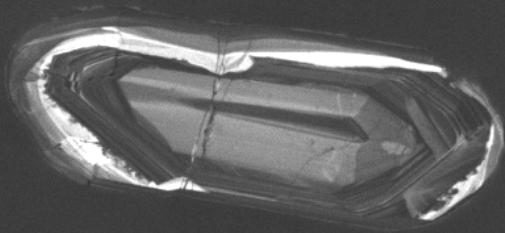
100µm



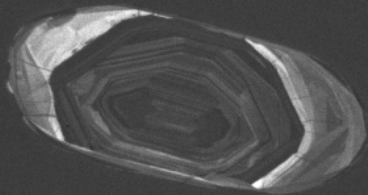
11



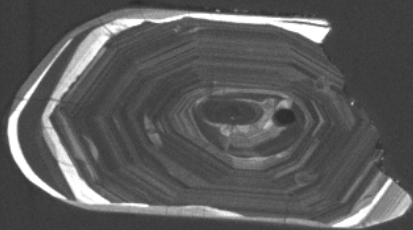
12



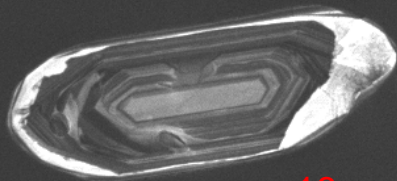
14



13



15



16

SEM HV: 10.0 kV

WD: 16.96 mm

View field: 444 μ m

SEM MAG: 624 x

100 μ m

MIRA3 TESCAN

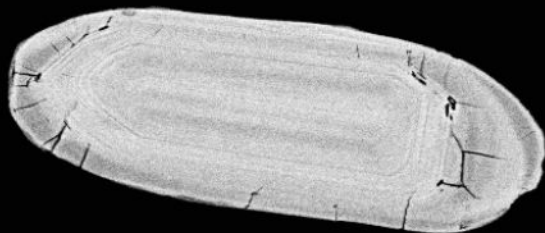
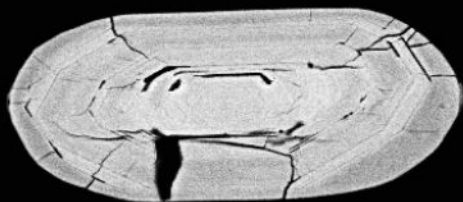
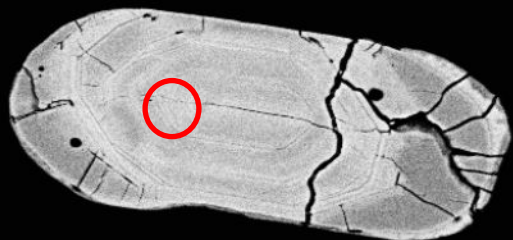
12626-03-cl

Det: CL

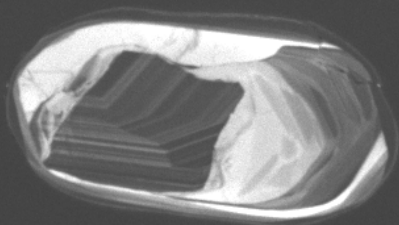
NRCan LMS GSC



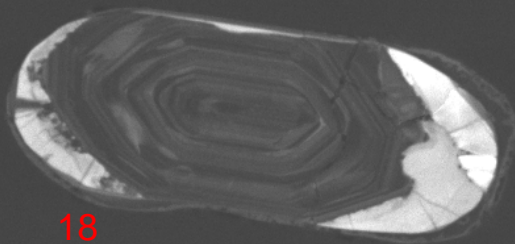
12626-04-bse



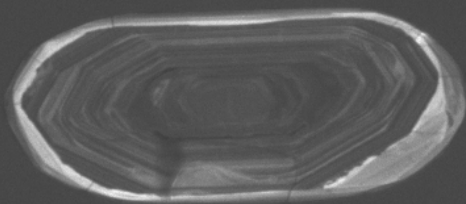
100µm



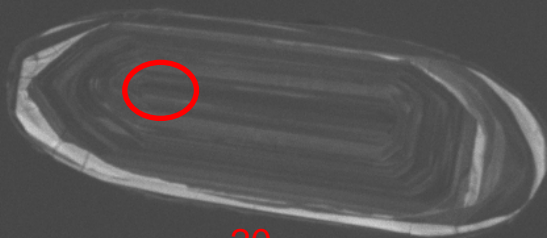
17



18



19



20

SEM HV: 10.0 kV

WD: 16.96 mm

MIRA3 TESCAN

View field: 323 μ m

SEM MAG: 857 x

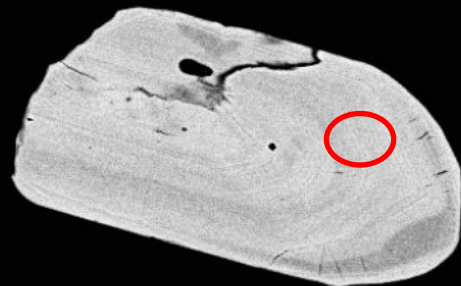
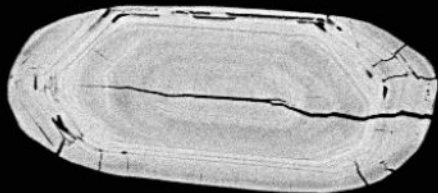
100 μ m

12626-04-cl

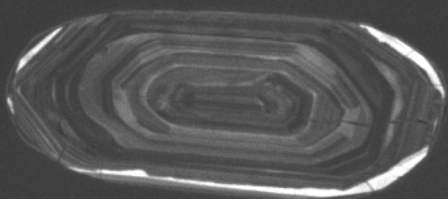
Det: CL

NRCan LMS GSC

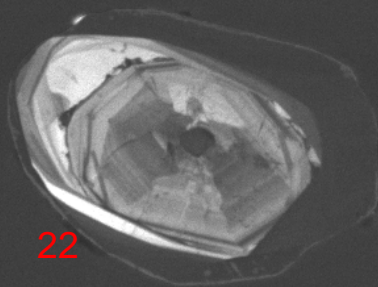
12626-05-bse



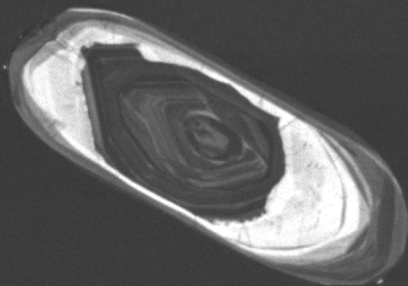
100μm



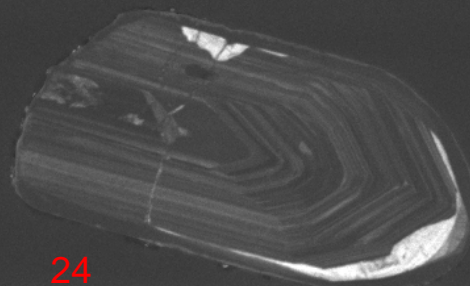
21



22



23



24

SEM HV: 10.0 kV

WD: 16.96 mm

View field: 334 μ m

SEM MAG: 828 x

100 μ m

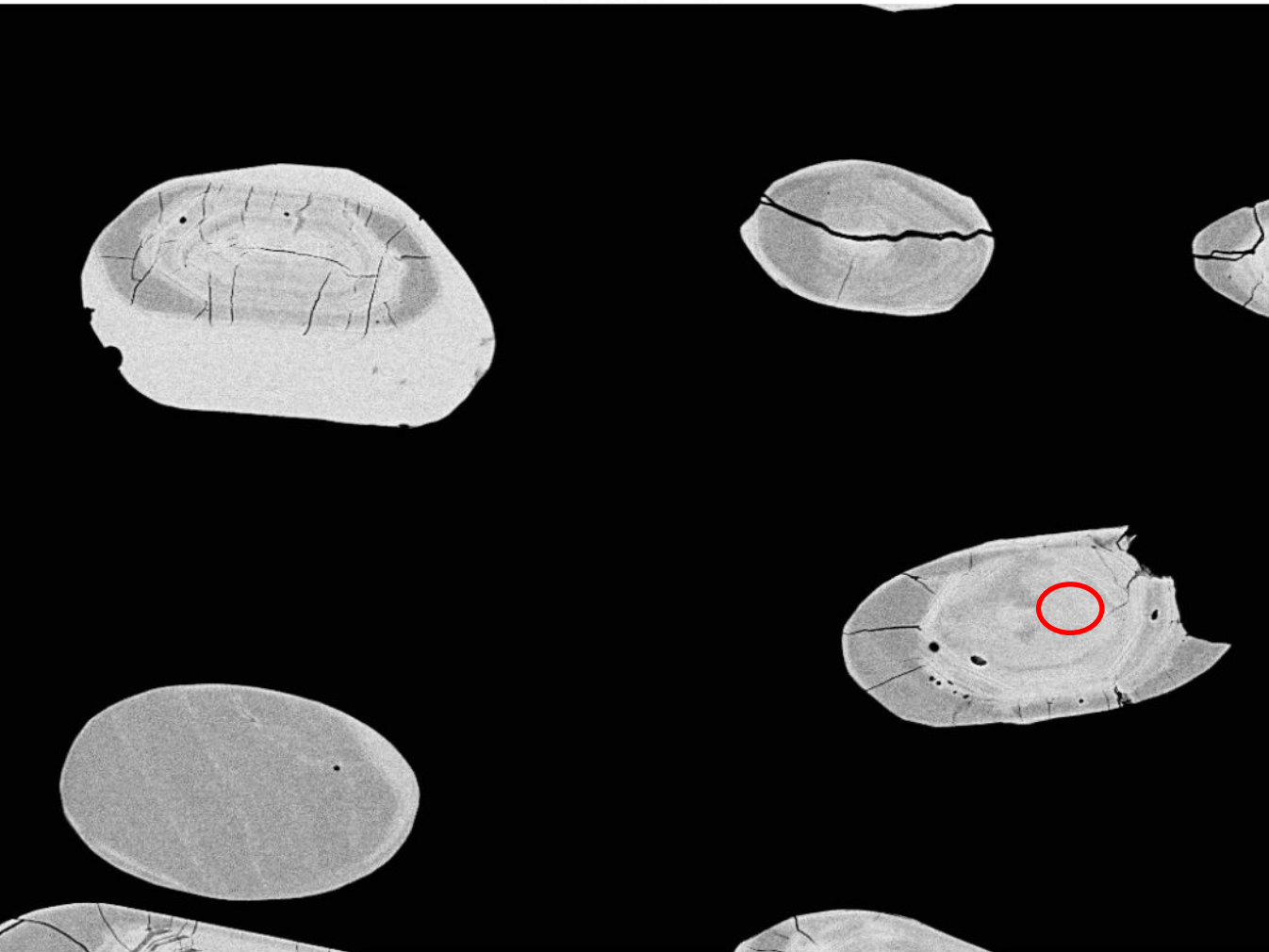
MIRA3 TESCAN

12626-05-cl

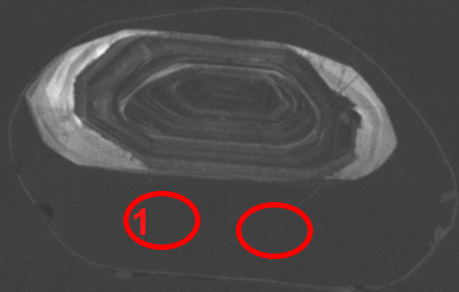
Det: CL

NRCan LMS GSC

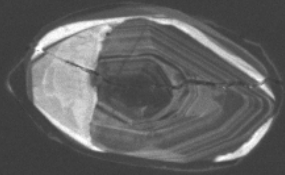
12626-06-bse



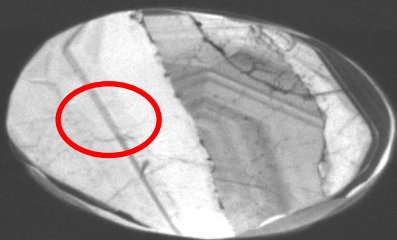
100µm



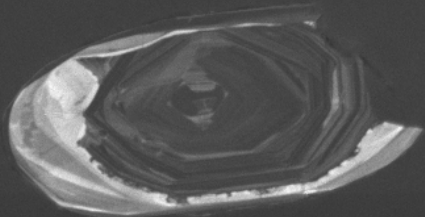
25



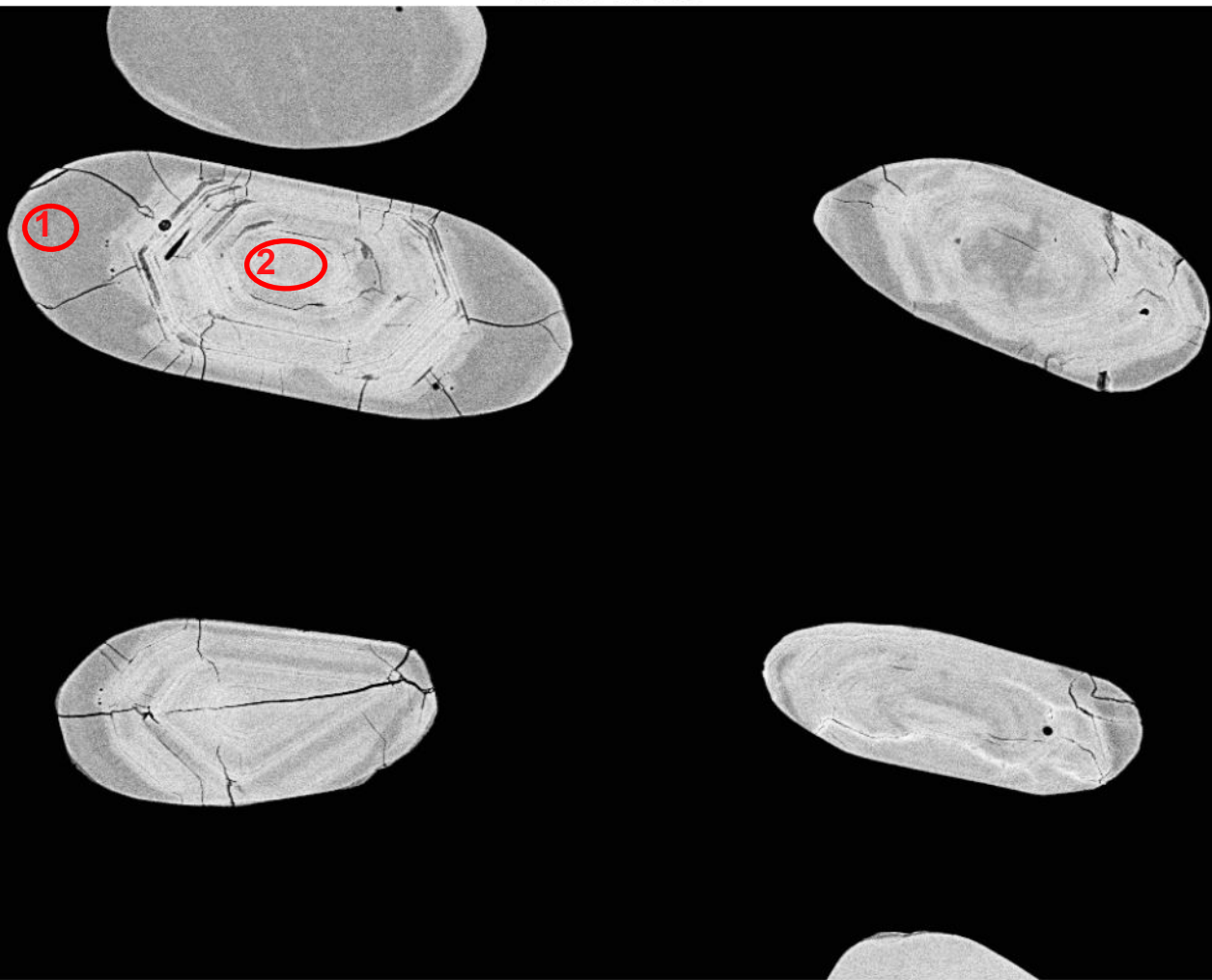
26



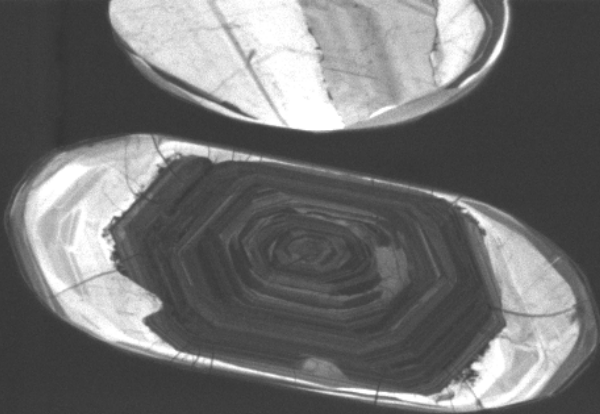
27



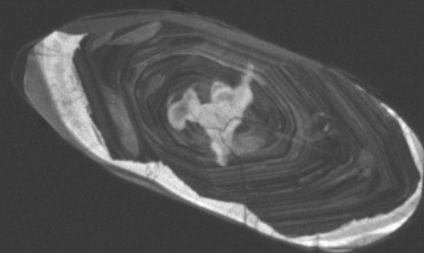
28



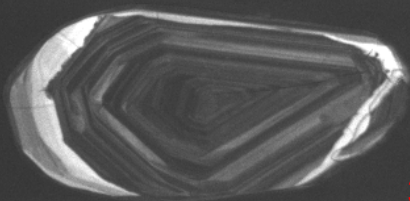
100µm



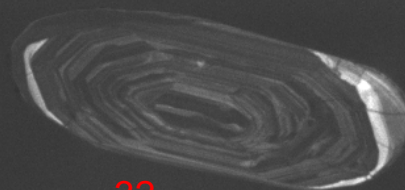
29



30



31



32

SEM HV: 10.0 kV

WD: 16.96 mm

View field: 370 μ m

SEM MAG: 749 x

100 μ m

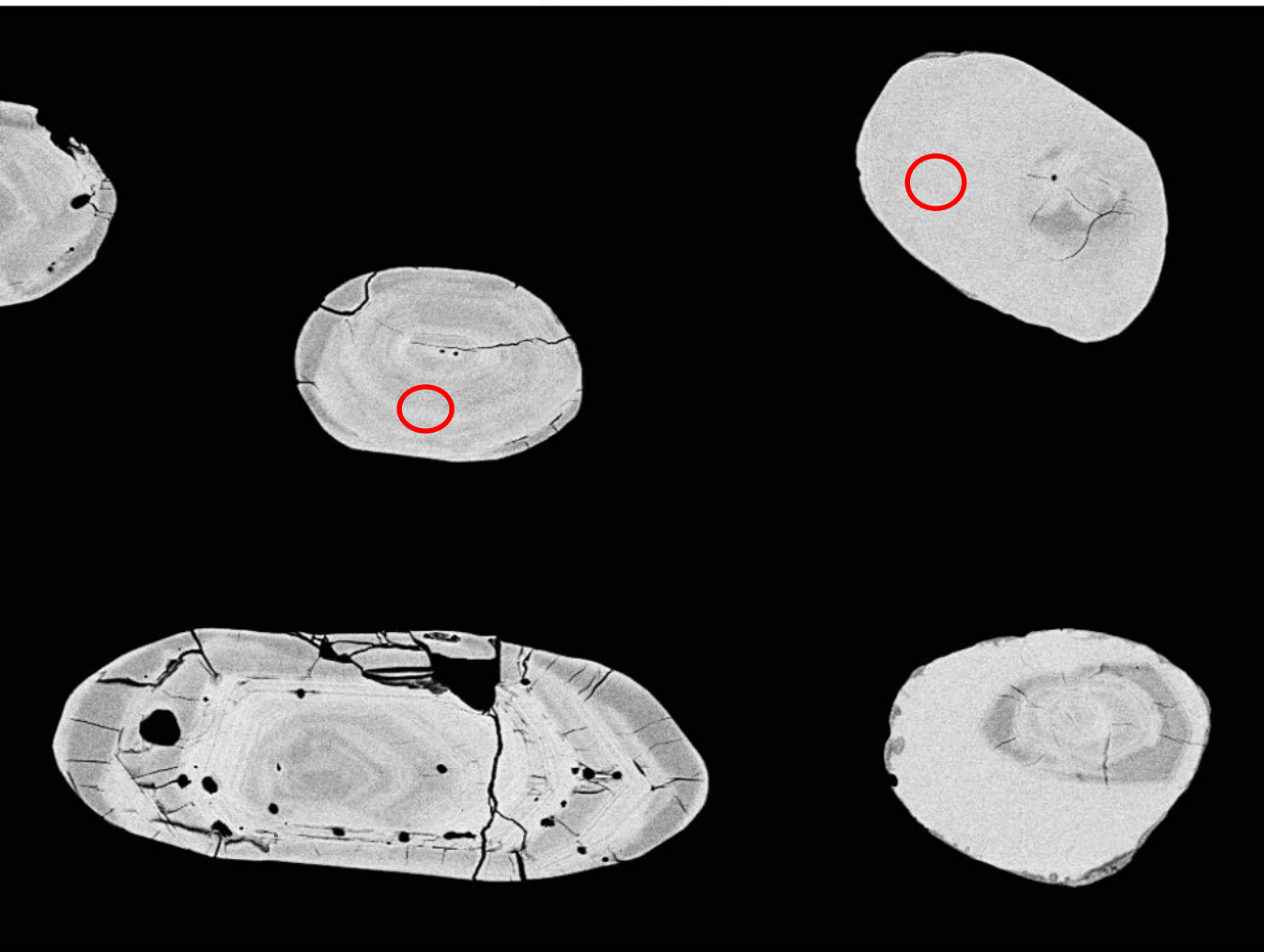
MIRA3 TESCAN

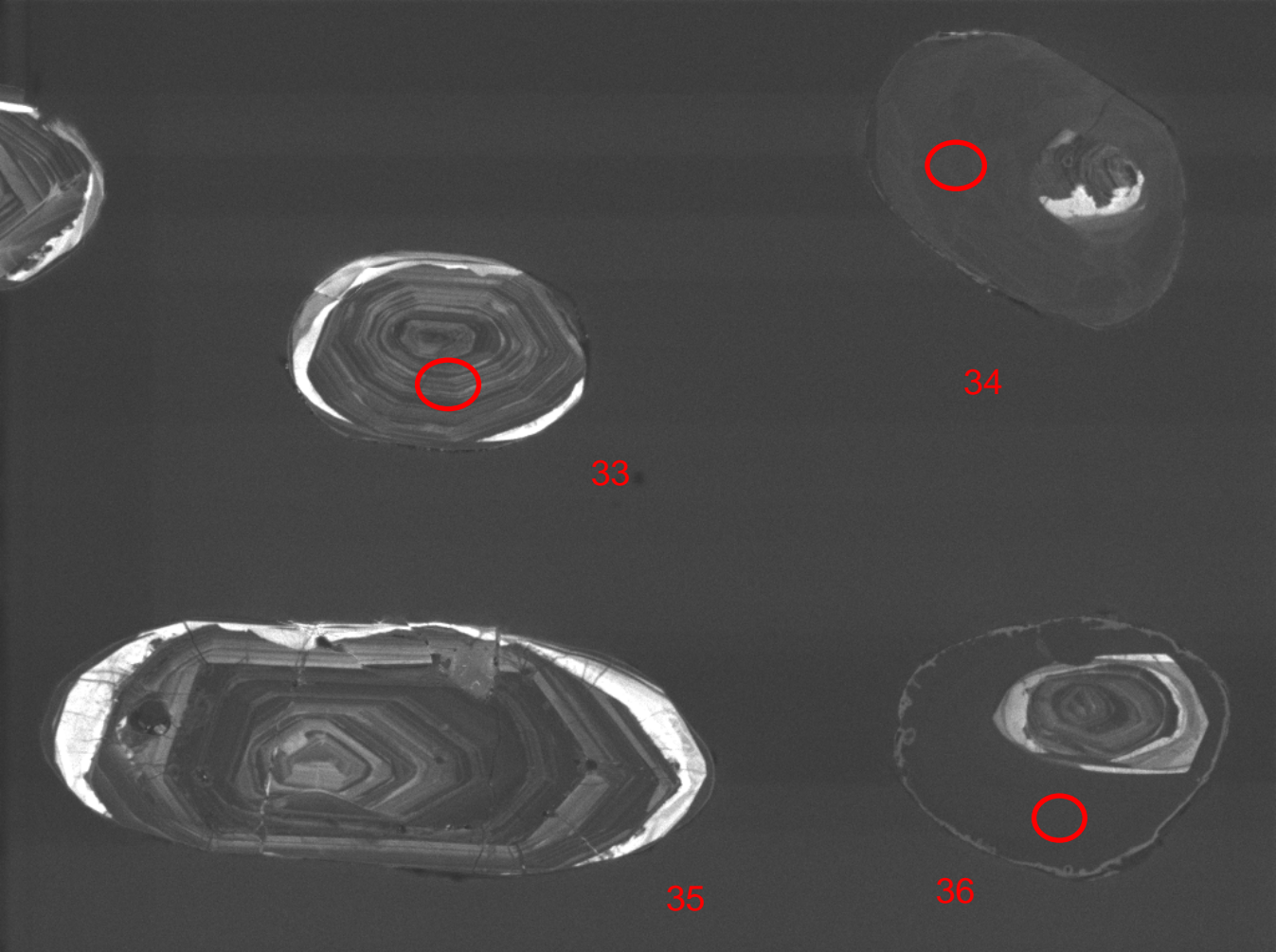
12626-07-cl

Det: CL

NRCan LMS GSC

12626-08-bse





SEM HV: 10.0 kV

WD: 16.96 mm

View field: 370 μm

SEM MAG: 749 x

100 μm

MIRA3 TESCAN

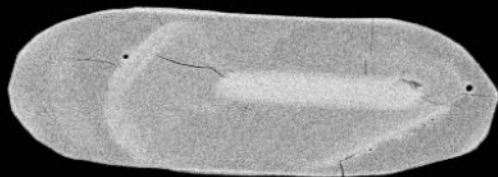
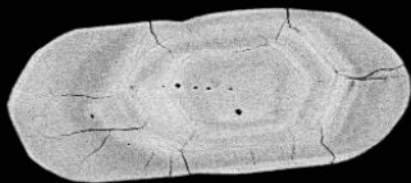
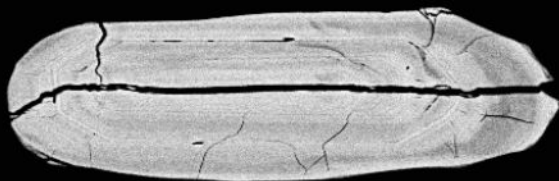
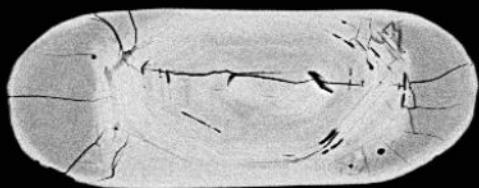
12626-08-cl

Det: CL

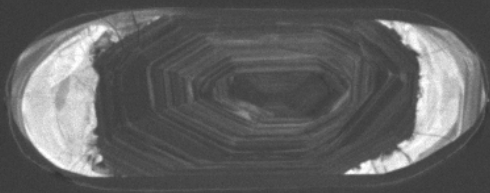
NRCan LMS GSC



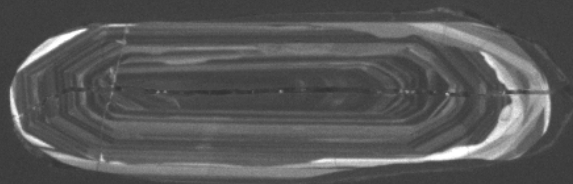
12626-09-bse



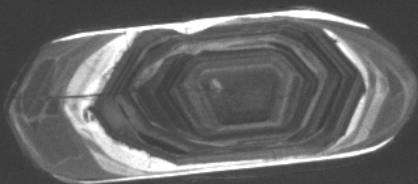
100µm



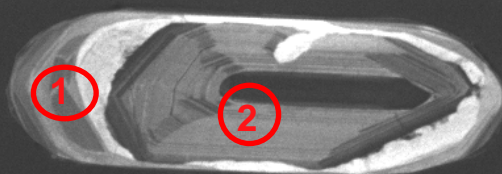
37



38



39



40

SEM HV: 10.0 kV

WD: 16.96 mm

View field: 370 μm

SEM MAG: 748 x

100 μm

MIRA3 TESCAN

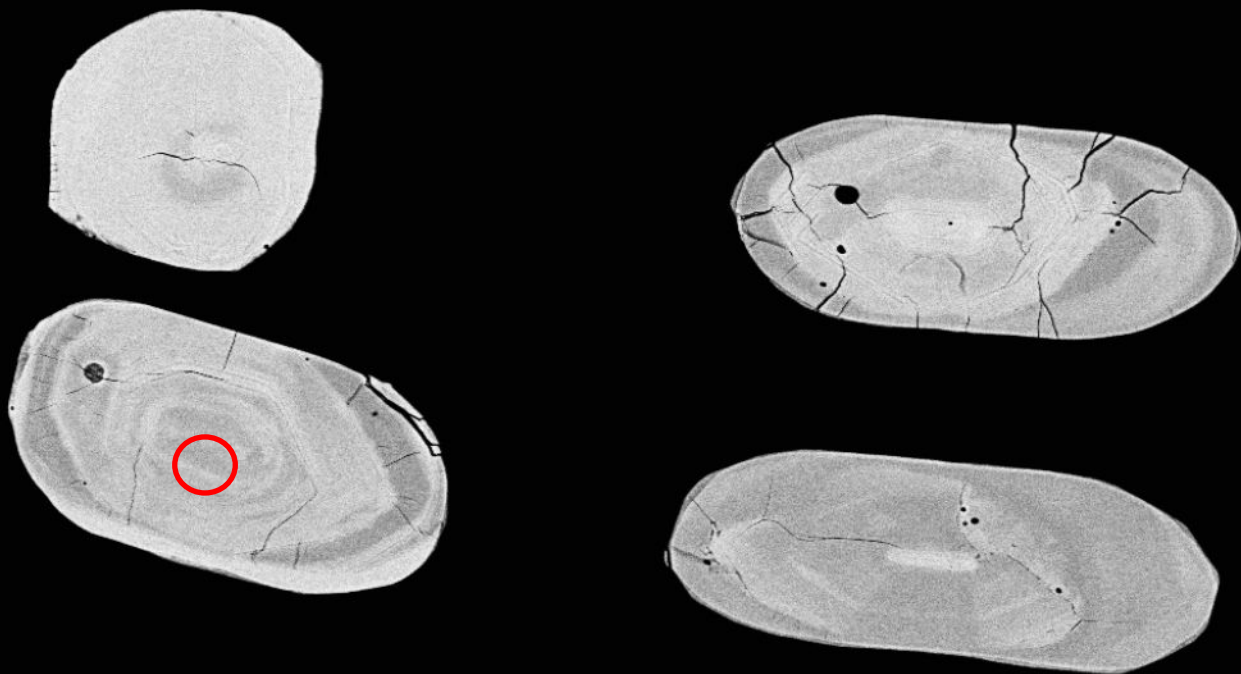
12626-09-cl

Det: CL

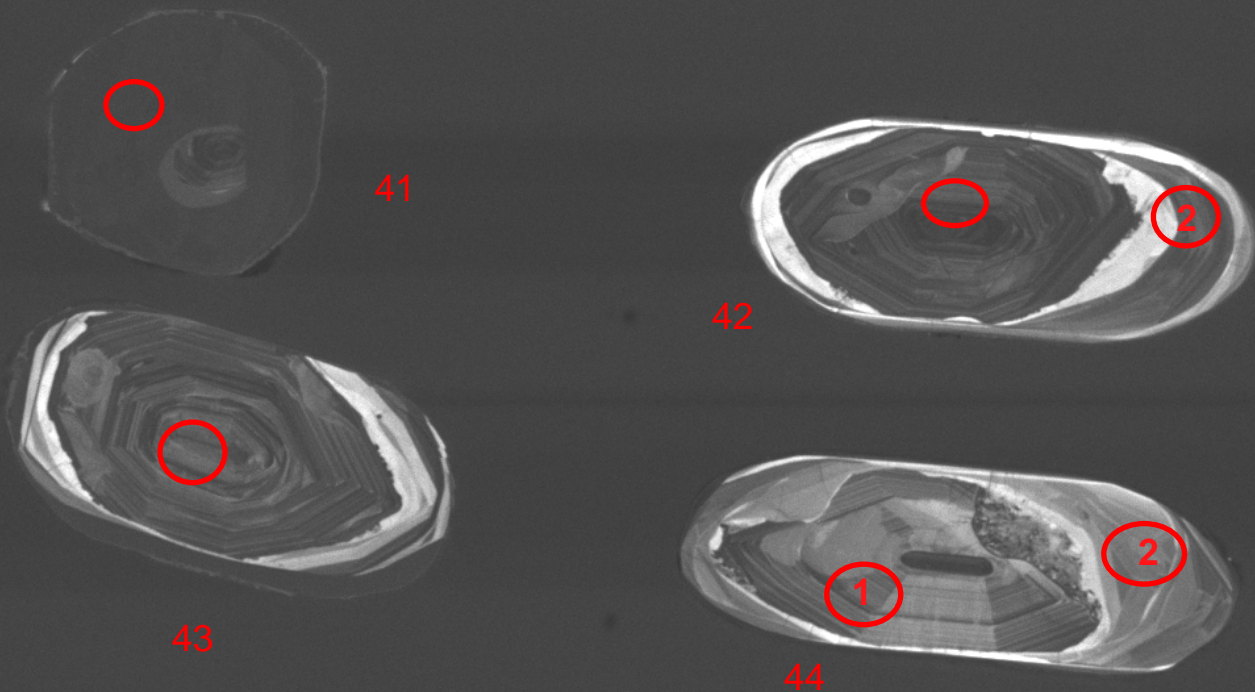
NRCan LMS GSC



12626-10-bse



100μm



SEM HV: 10.0 kV

WD: 16.96 mm

MIRA3 TESCAN

View field: 334 μ m

SEM MAG: 830 x

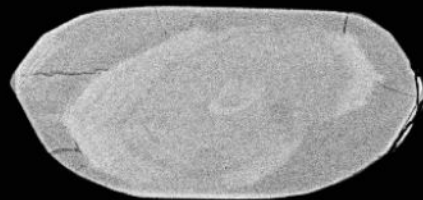
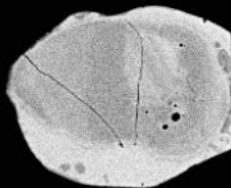
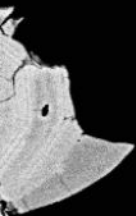
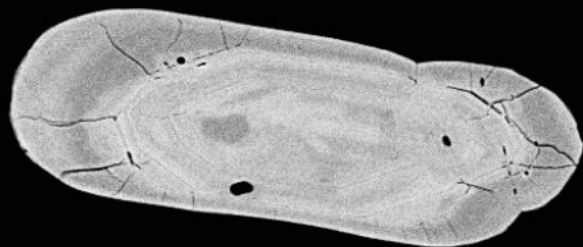
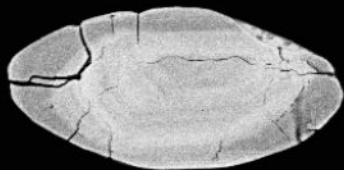
100 μ m

12626-10-cl

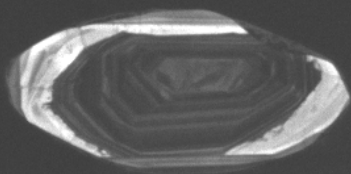
Det: CL

NRCan LMS GSC

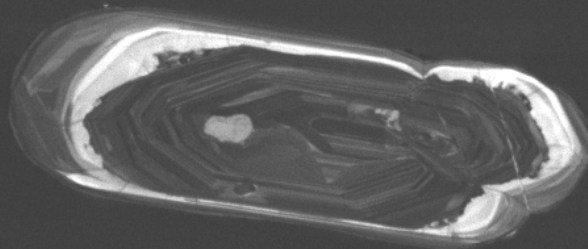
12626-11-bse



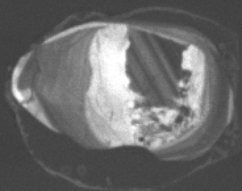
100µm



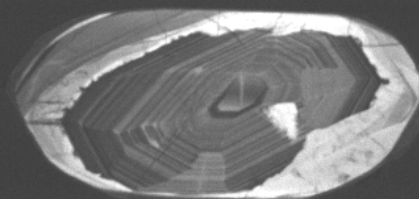
45



46



47



48

SEM HV: 10.0 kV

WD: 16.96 mm

View field: 347 μ m

SEM MAG: 797 x

100 μ m

MIRA3 TESCAN

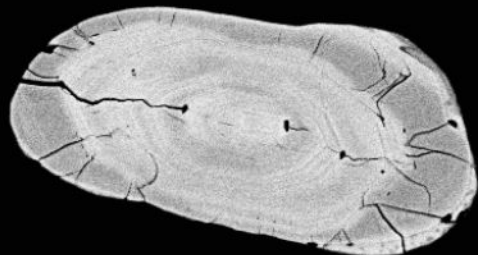
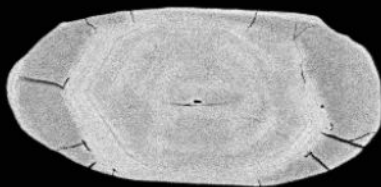
12626-11-cl

Det: CL

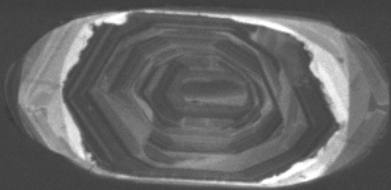
NRCan LMS GSC



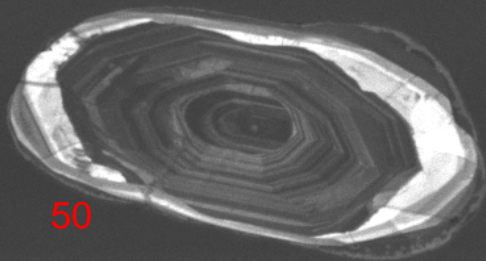
12626-12-bse



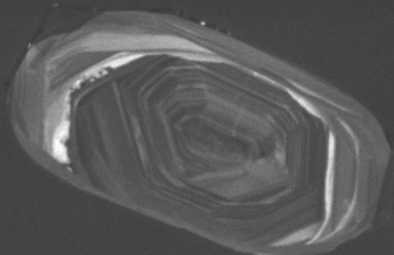
100μm



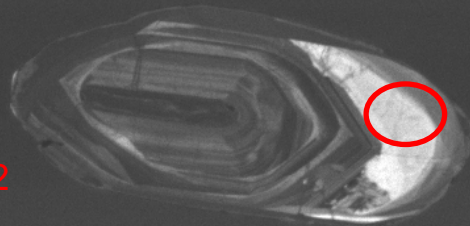
49



50



51



52

SEM HV: 10.0 kV

WD: 16.96 mm

View field: 330 μ m

SEM MAG: 838 x

100 μ m

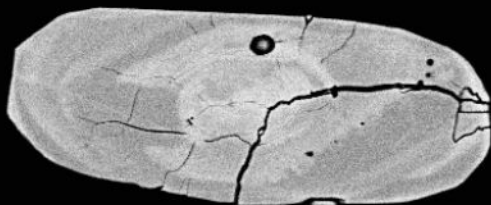
MIRA3 TESCAN

12626-12-cl

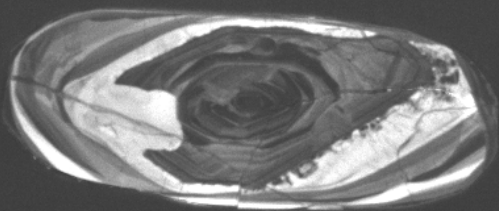
Det: CL

NRCan LMS GSC

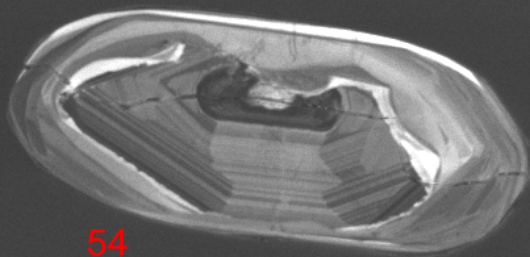
12626-13-bse



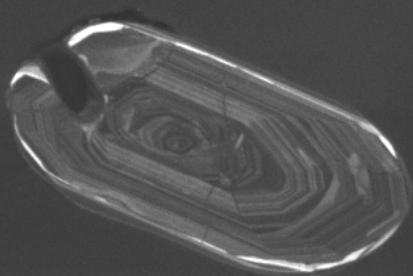
100µm



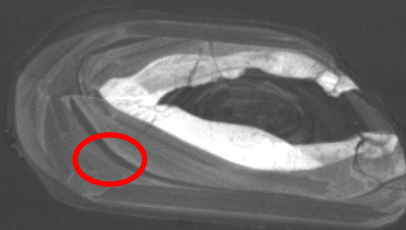
53



54



55



56

SEM HV: 10.0 kV

WD: 16.96 mm

View field: 334 μ m

SEM MAG: 829 x

100 μ m

MIRA3 TESCAN

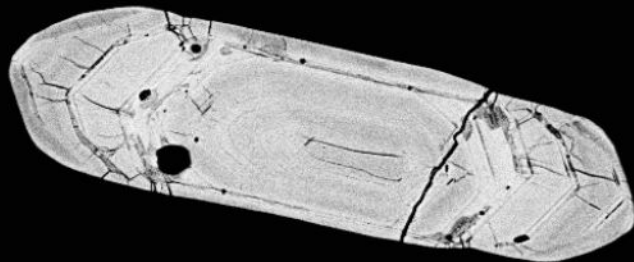
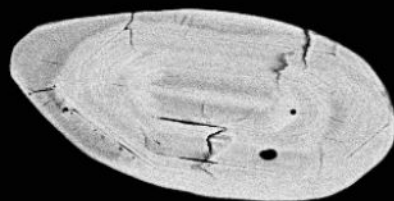
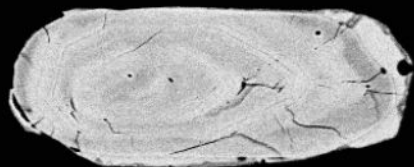
12626-13-cl

Det: CL

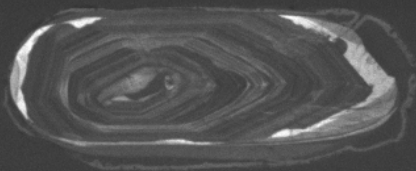
NRCan LMS GSC



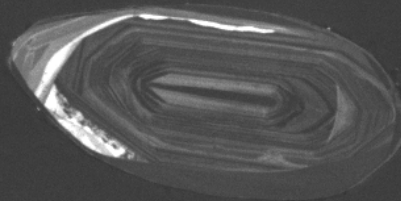
12626-14-bse



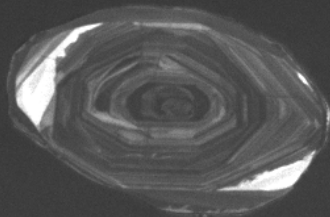
100μm



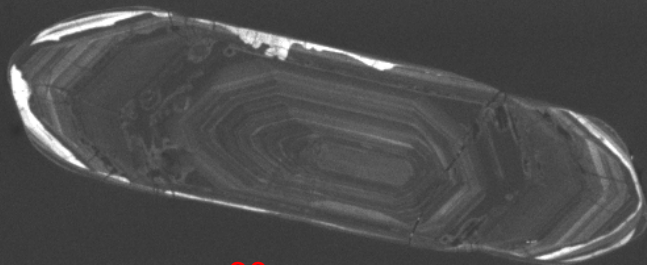
57



58



59



60

SEM HV: 10.0 kV

WD: 16.96 mm

View field: 388 μ m

SEM MAG: 714 x

100 μ m

MIRA3 TESCAN

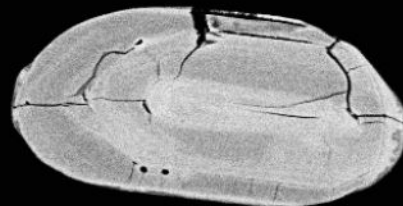
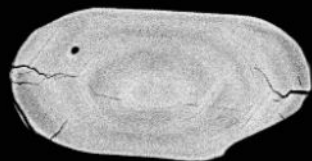
12626-14-cl

Det: CL

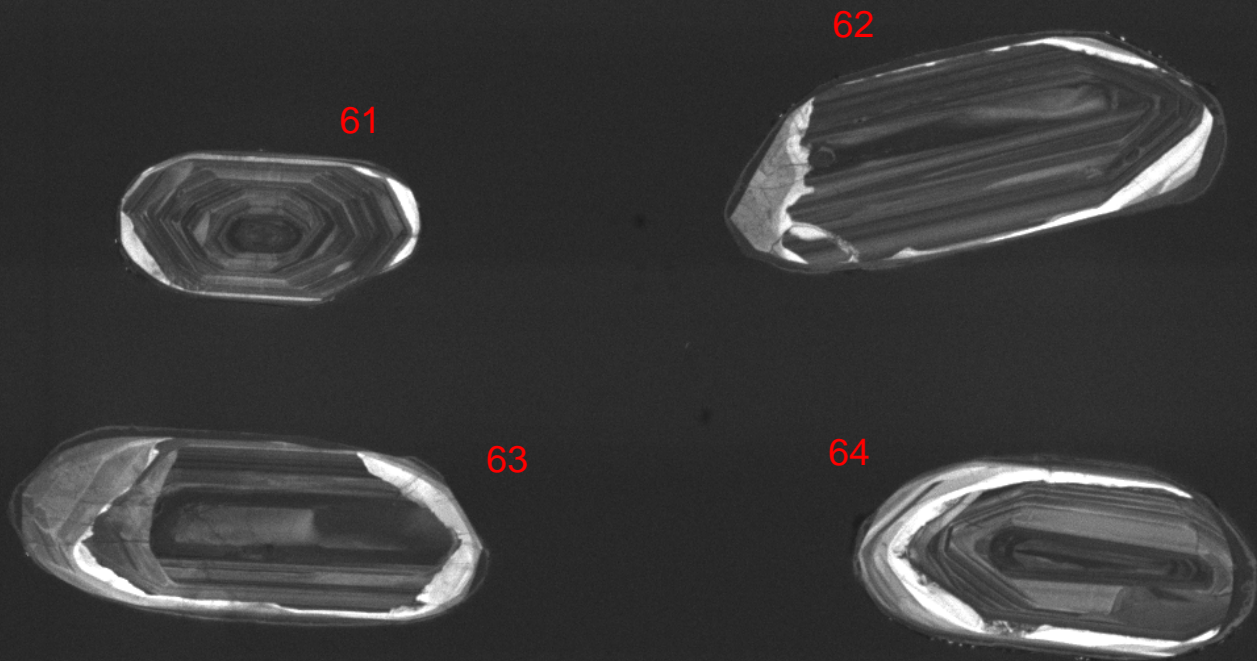
NRCan LMS GSC



12626-15-bse



100µm



SEM HV: 10.0 kV

WD: 16.97 mm

MIRA3 TESCAN

View field: 357 μm

SEM MAG: 776 x

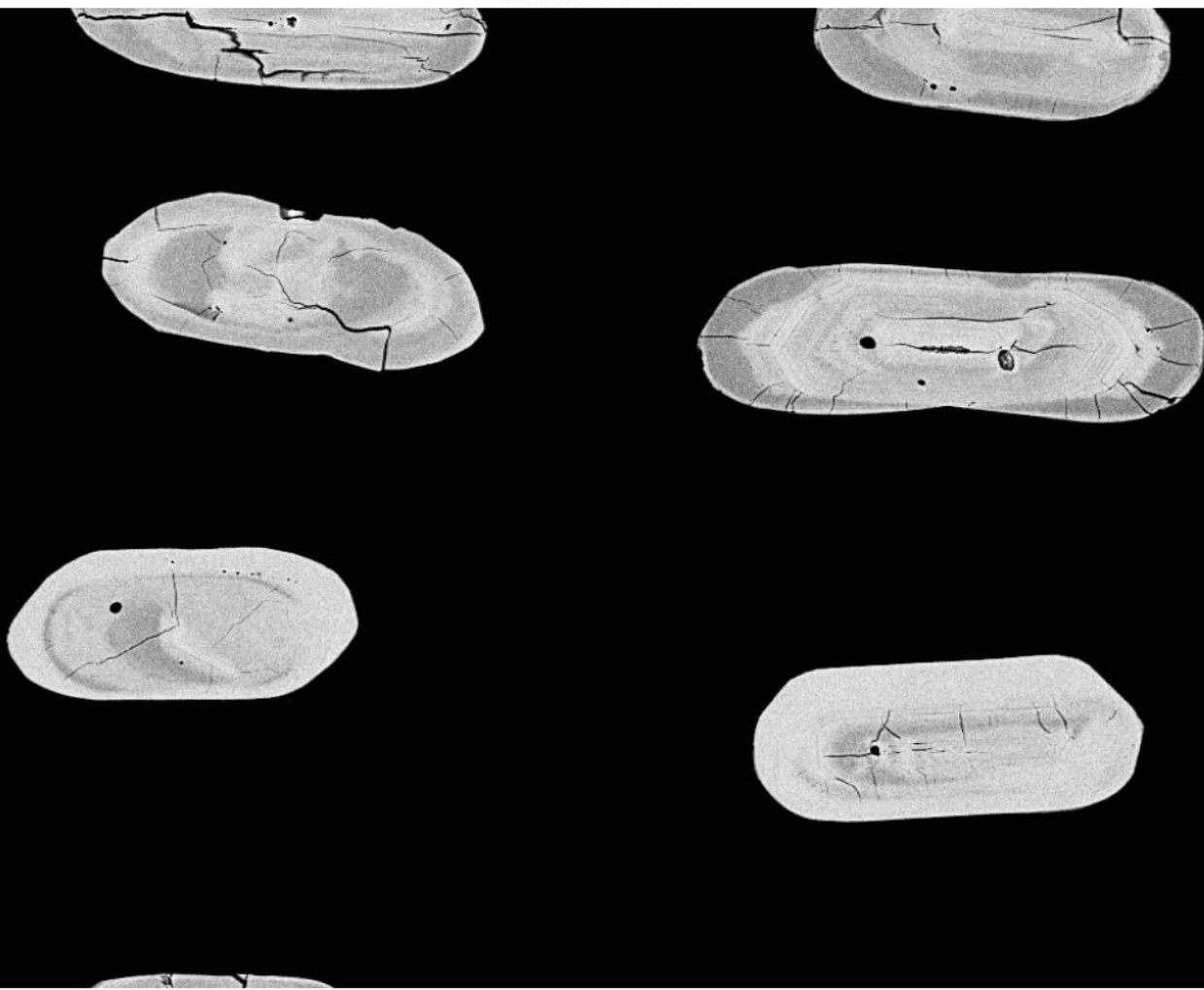
100 μm

12626-15-cl

Det: CL

NRCan LMS GSC

12626-16-bse



100µm



65



66



67




68

SEM HV: 10.0 kV

WD: 16.97 mm

View field: 382 μm

SEM MAG: 724 x



100 μm

MIRA3 TESCAN

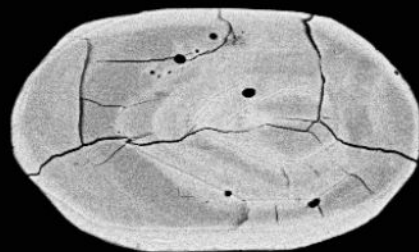
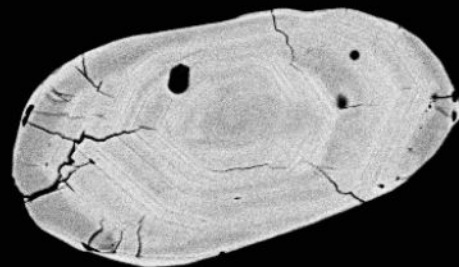
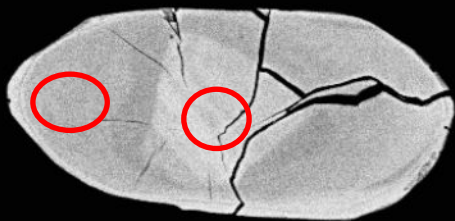
12626-16-cl

Det: CL

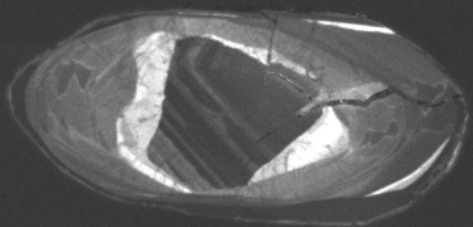
NRCan LMS GSC



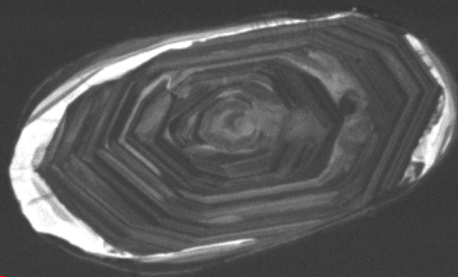
12626-17-bse



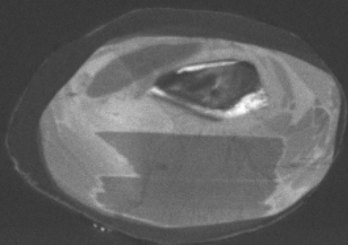
100μm



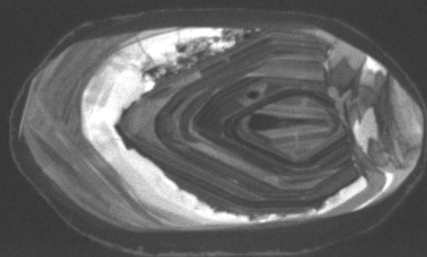
69



70



71



72

SEM HV: 10.0 kV

WD: 16.97 mm

MIRA3 TESCAN

View field: 320 μ m

SEM MAG: 865 x

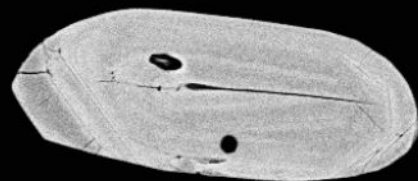
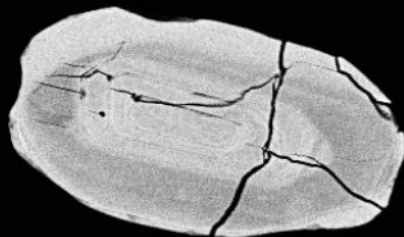
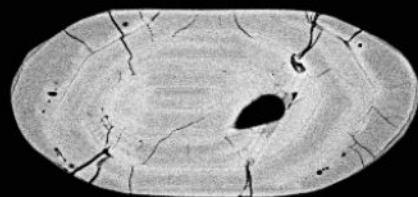
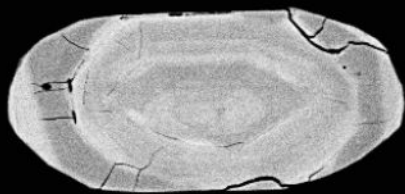
100 μ m

12626-17-cl

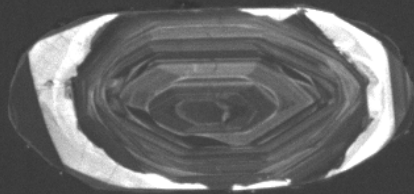
Det: CL

NRCan LMS GSC

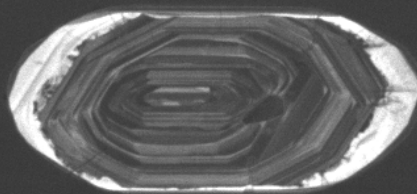
12626-18-bse



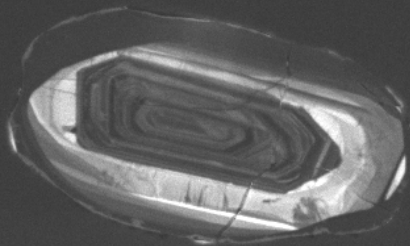
100µm



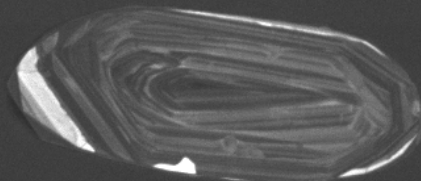
73



74



75



76

SEM HV: 10.0 kV

WD: 16.97 mm

View field: 357 μm

SEM MAG: 775 x

100 μm

MIRA3 TESCAN

12626-18-cl

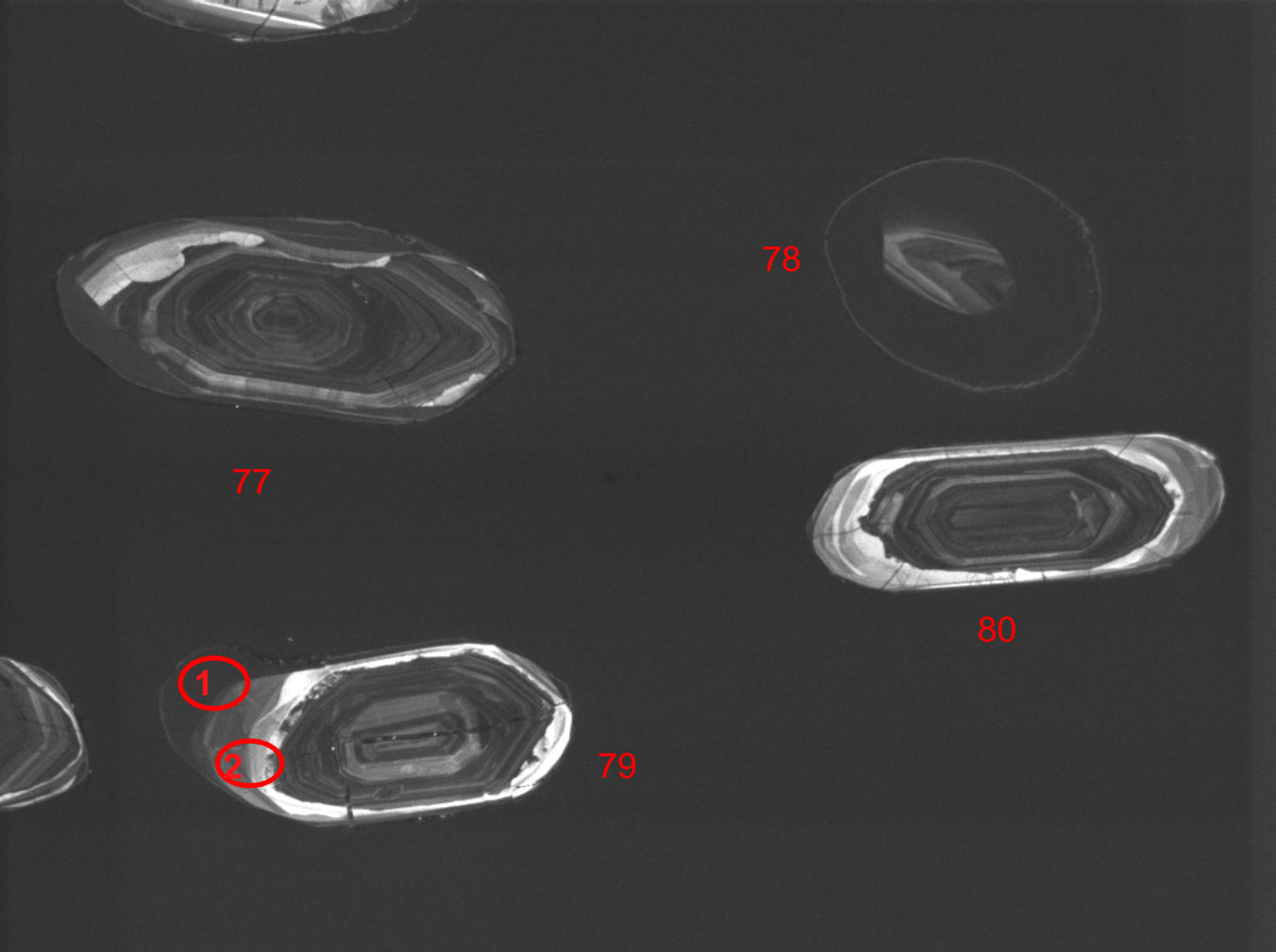
Det: CL


NRCan LMS GSC

12626-19-bse

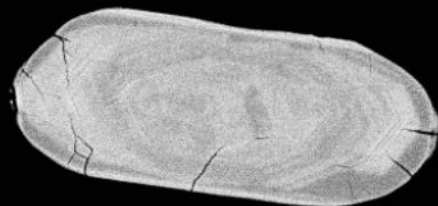
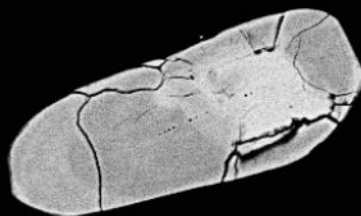
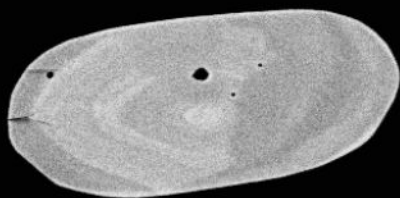


100µm

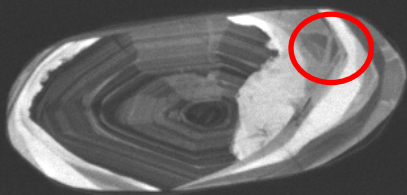


SEM HV: 10.0 kV	WD: 16.97 mm		MIRA3 TESCAN
View field: 375 µm	SEM MAG: 737 x		100 µm
12626-19-cl	Det: CL		

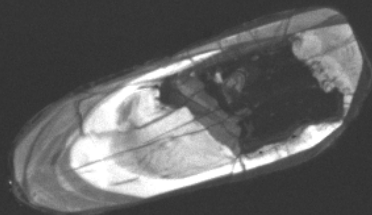
12626-20-bse



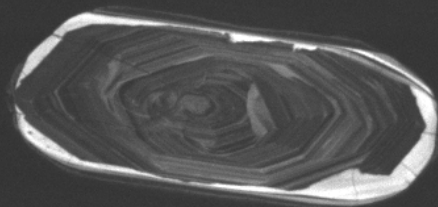
100µm



81



82



83

SEM HV: 10.0 kV

WD: 16.97 mm

View field: 357 μ m

SEM MAG: 774 x

100 μ m

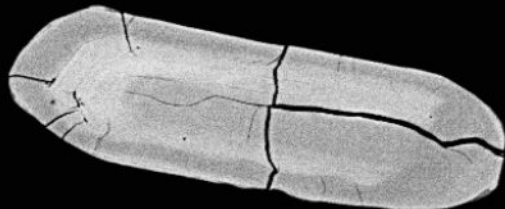
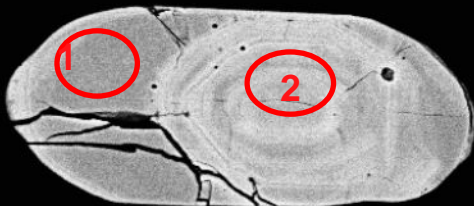
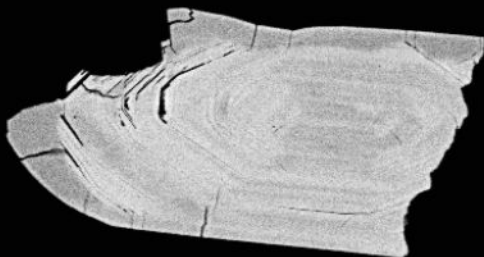
MIRA3 TESCAN

12626-20-cl

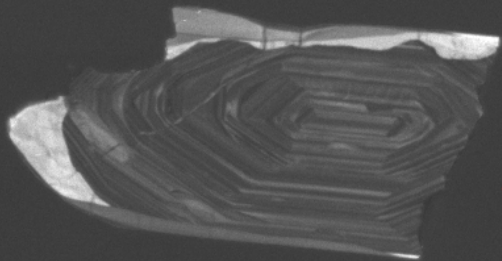
Det: CL

NRCan LMS GSC

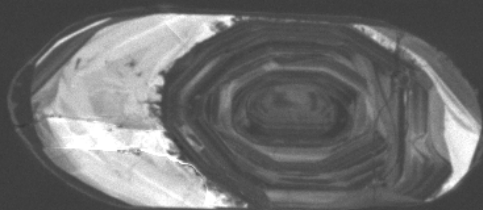




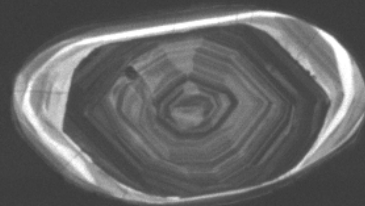
100µm



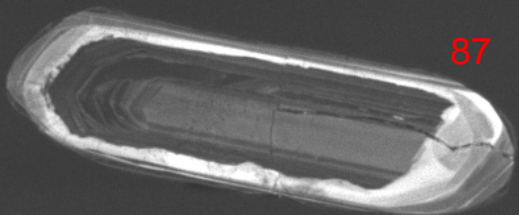
84



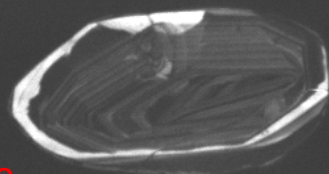
85



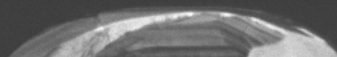
86



87



88



SEM HV: 10.0 kV

WD: 16.97 mm

View field: 324 μ m

SEM MAG: 855 x

100 μ m

MIRA3 TESCAN

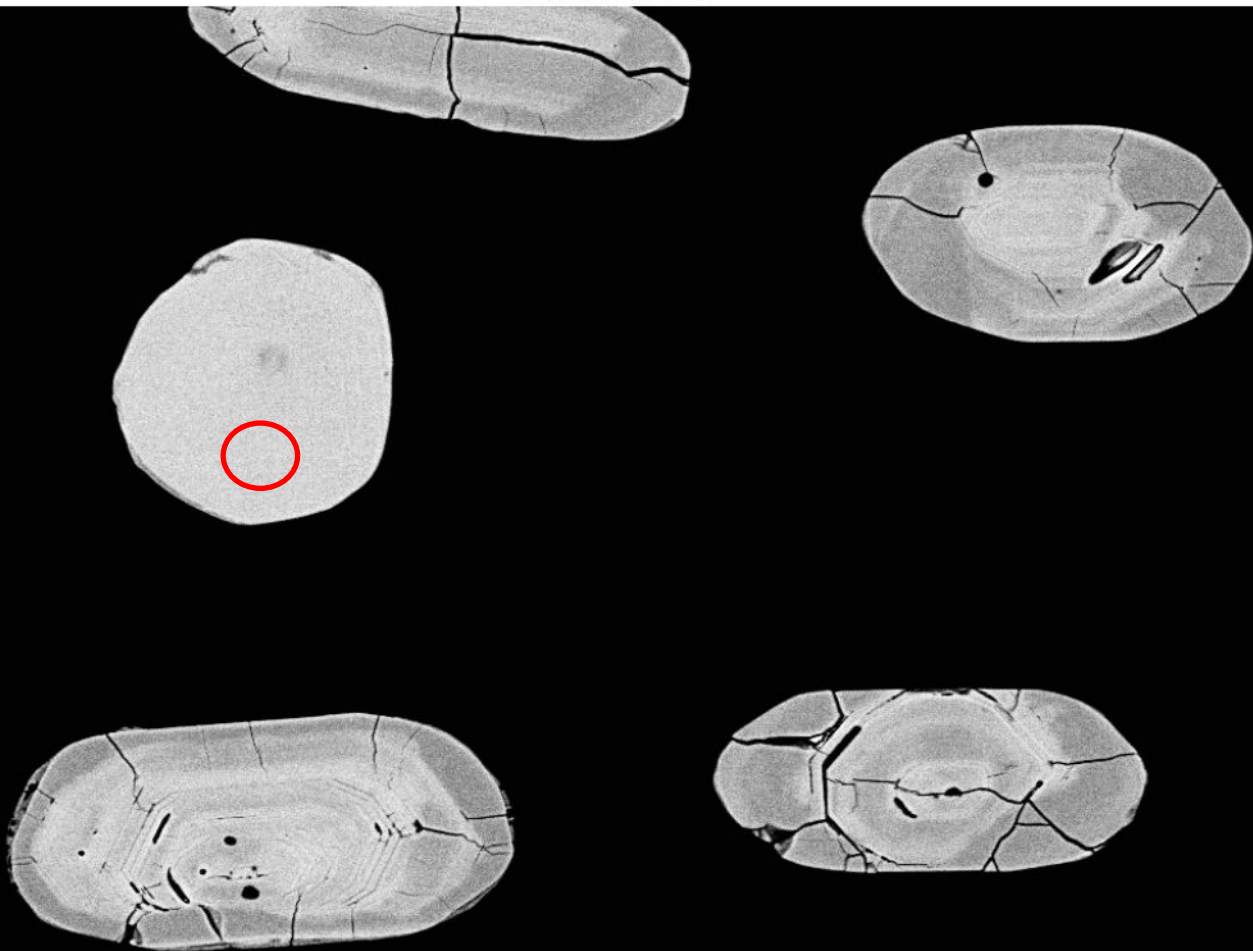
12626-21-cl

Det: CL

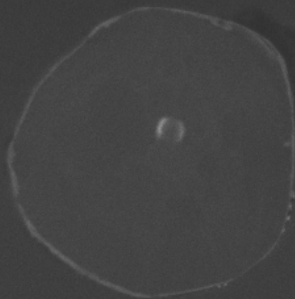
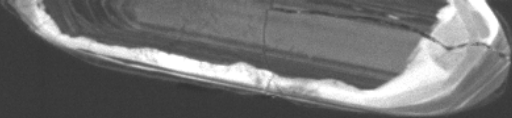
NRCan LMS GSC



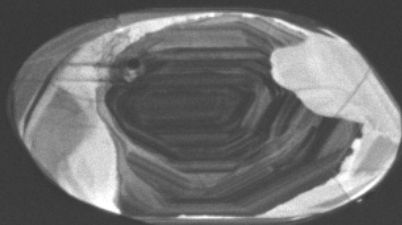
12626-22-bse



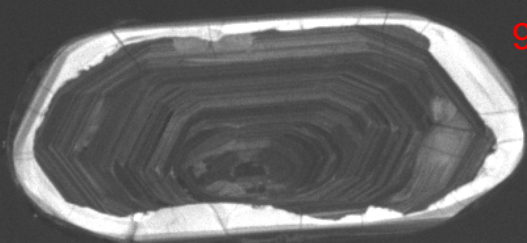
100µm



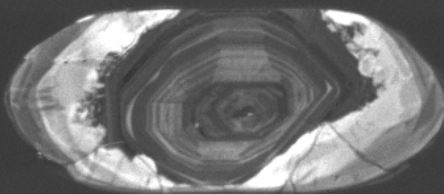
89



90



91



92

SEM HV: 10.0 kV

WD: 16.97 mm

View field: 319 μm

SEM MAG: 866 x

100 μm

MIRA3 TESCAN

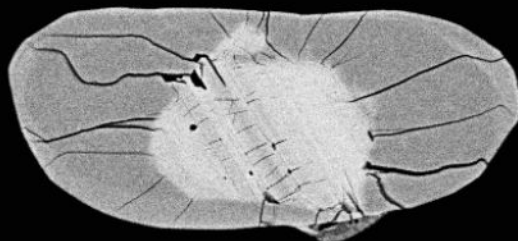
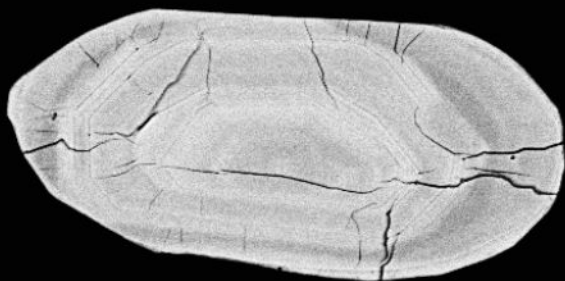
12626-22-cl

Det: CL

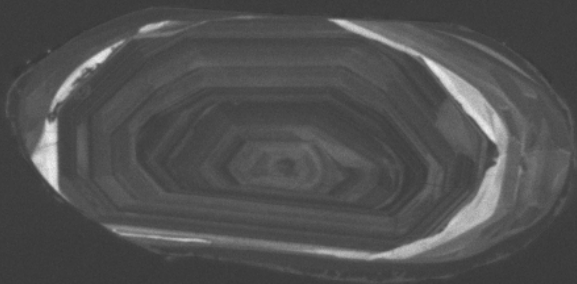
NRCan LMS GSC



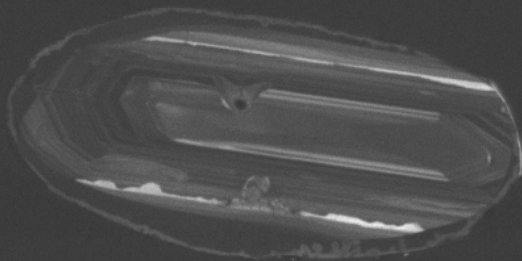
12626-23-bse



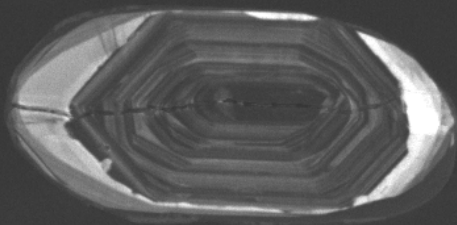
100μm



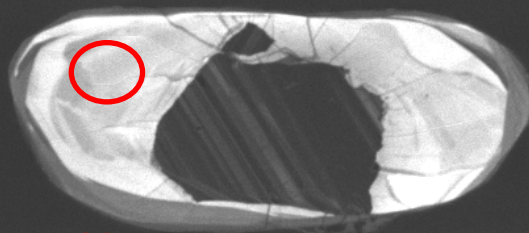
93



94



95



96

SEM HV: 10.0 kV

WD: 16.97 mm

MIRA3 TESCAN

View field: 319 μ m

SEM MAG: 866 x

100 μ m

12626-23-cl

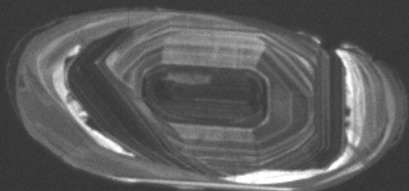
Det: CL

NRCan LMS GSC

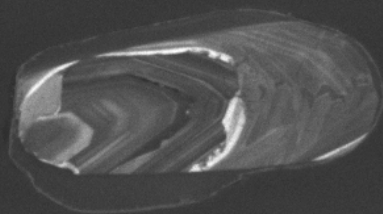
12626-24-bse



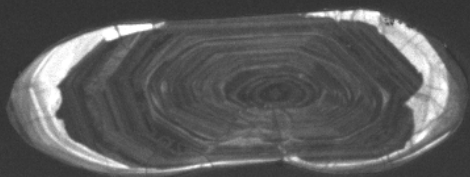
100μm



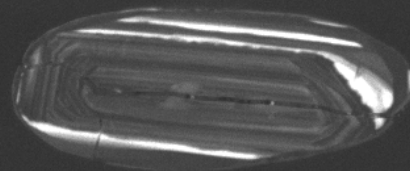
97



98



99



100

SEM HV: 10.0 kV

WD: 16.97 mm

View field: 329 μ m

SEM MAG: 841 x

100 μ m

MIRA3 TESCAN

12626-24-cl

Det: CL

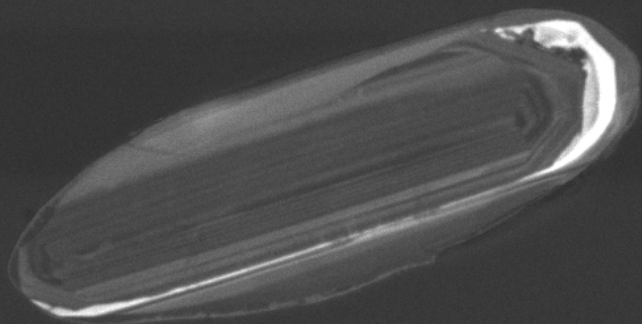
NRCan LMS GSC



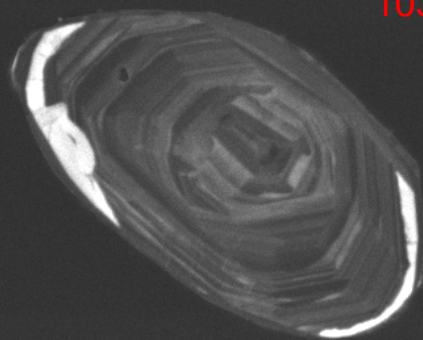
12626-25-bse



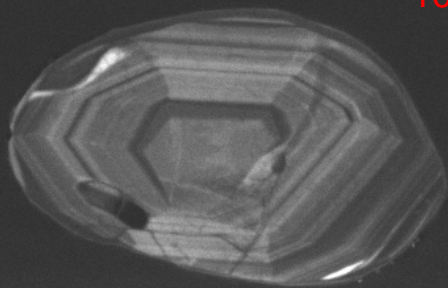
50µm



101



103



102

SEM HV: 10.0 kV

WD: 16.97 mm

View field: 240 μ m

SEM MAG: 1.15 kx

50 μ m

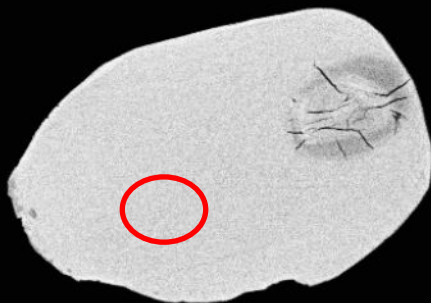
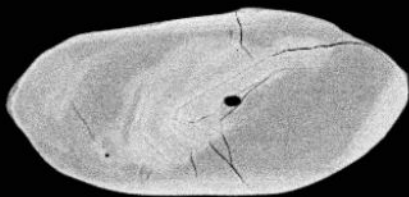
12626-25-cl

Det: CL

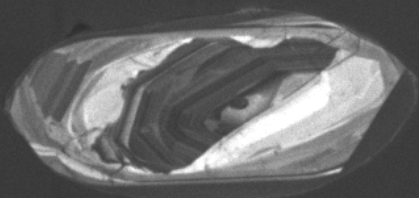
MIRA3 TESCAN

NRCan LMS GSC

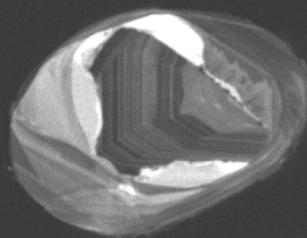
12626-26-bse



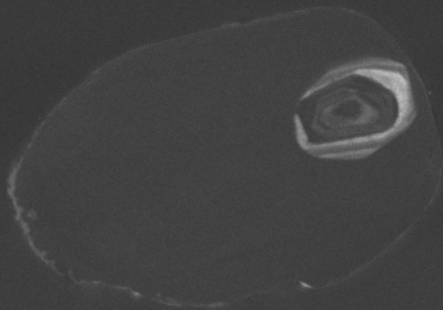
100µm



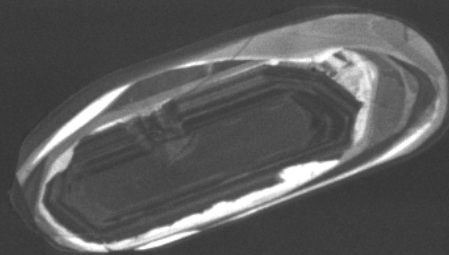
104



105



106



107

SEM HV: 10.0 kV

WD: 16.97 mm

View field: 309 μ m

SEM MAG: 896 x

12626-26-cl

Det: CL

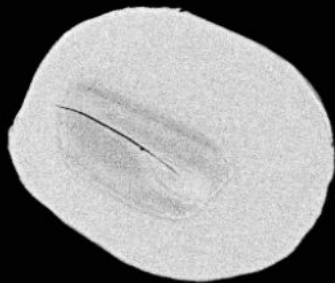
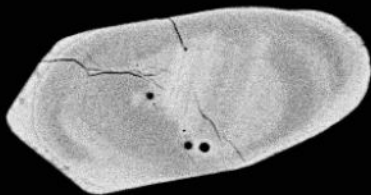
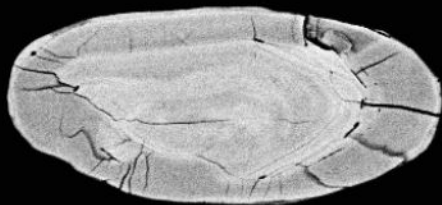


50 μ m

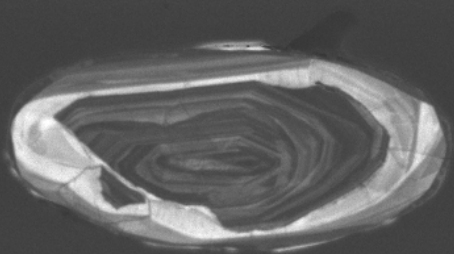
MIRA3 TESCAN

NRCan LMS GSC

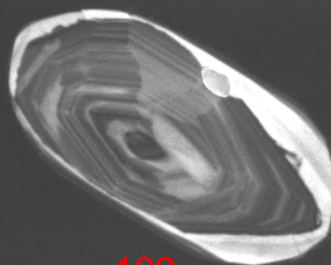
12626-27-bse



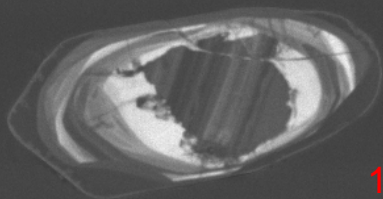
100µm



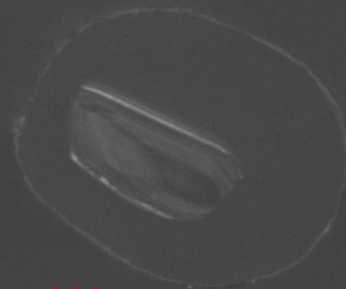
108



109



110



111

SEM HV: 10.0 kV

WD: 16.97 mm

View field: 309 μm

SEM MAG: 896 x

50 μm

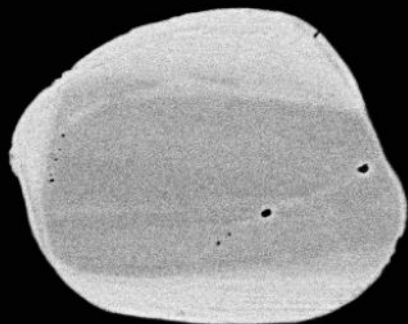
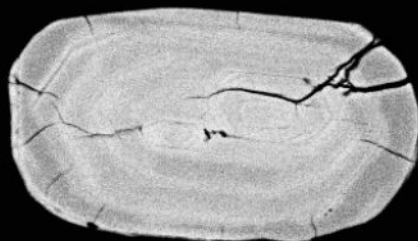
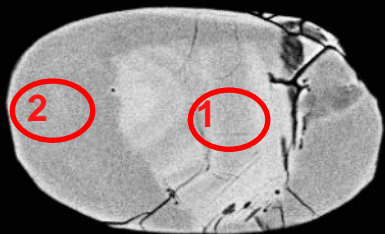
12626-27-cl

Det: CL

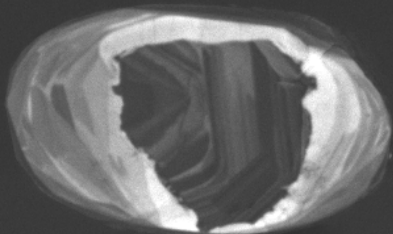
MIRA3 TESCAN

NRCan LMS GSC

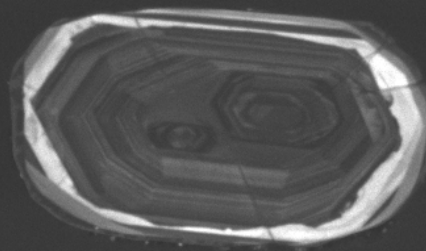
12626-28-bse



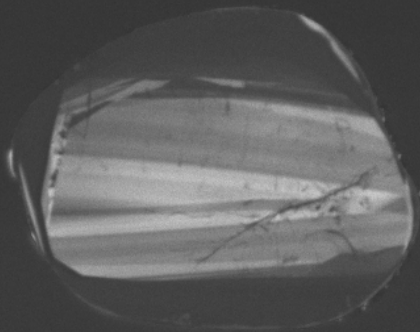
100µm



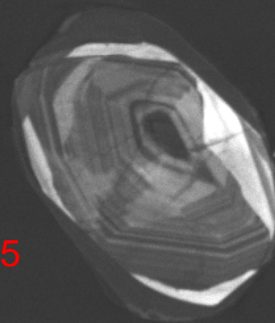
112



113



114



115

SEM HV: 10.0 kV

WD: 16.97 mm

View field: 271 μm

SEM MAG: 1.02 kx

50 μm

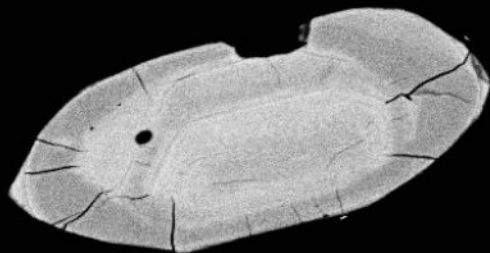
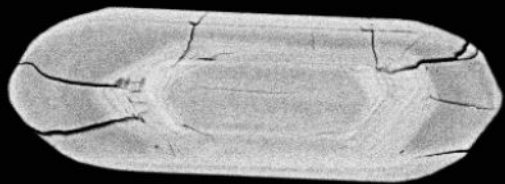
MIRA3 TESCAN

12626-28-cl

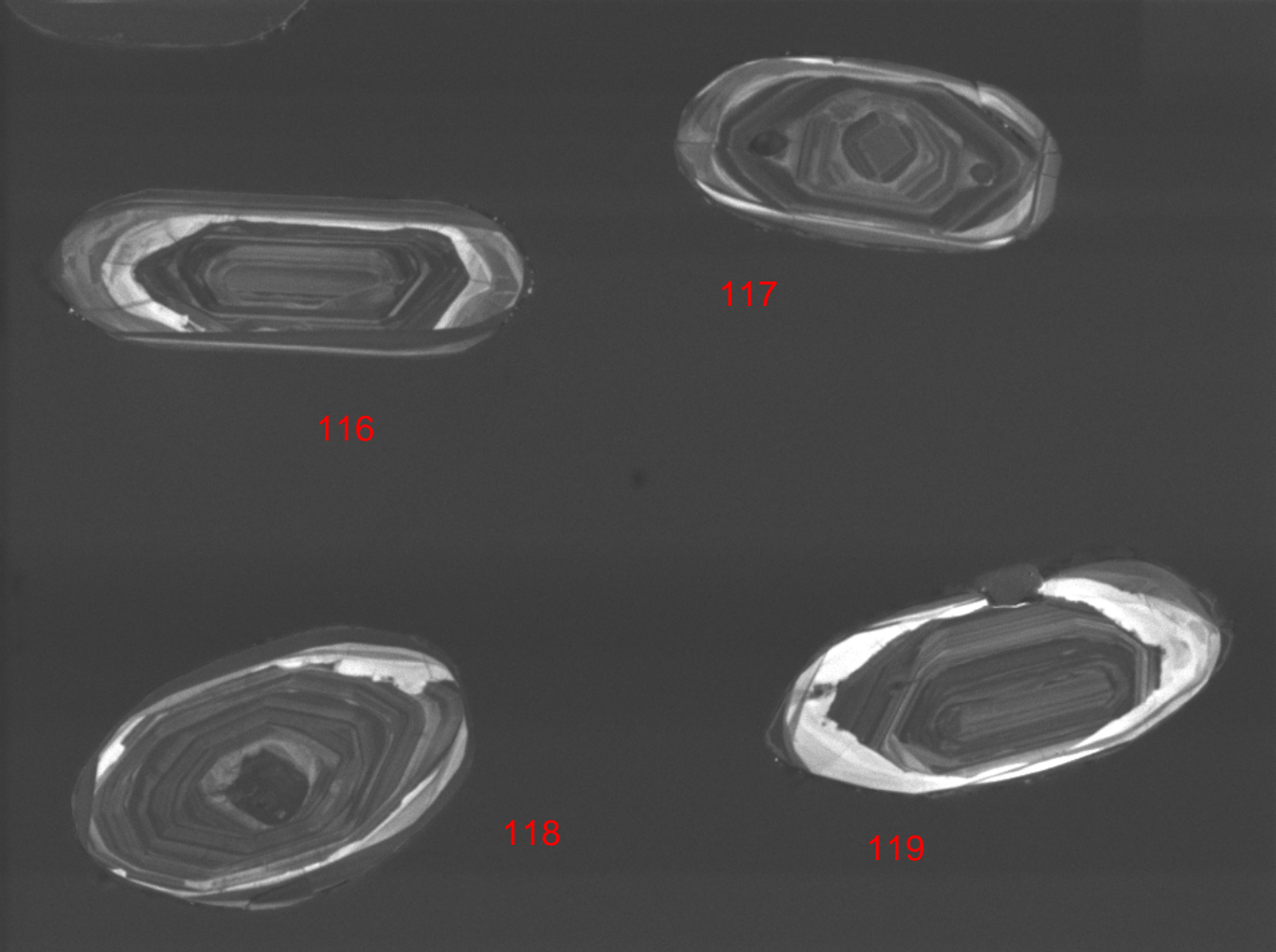
Det: CL

NRCan LMS GSC

12626-29-bse



100µm



116

117

118

119

SEM HV: 10.0 kV

WD: 16.97 mm

View field: 280 μ m

SEM MAG: 990 x

12626-29-cl

Det: CL

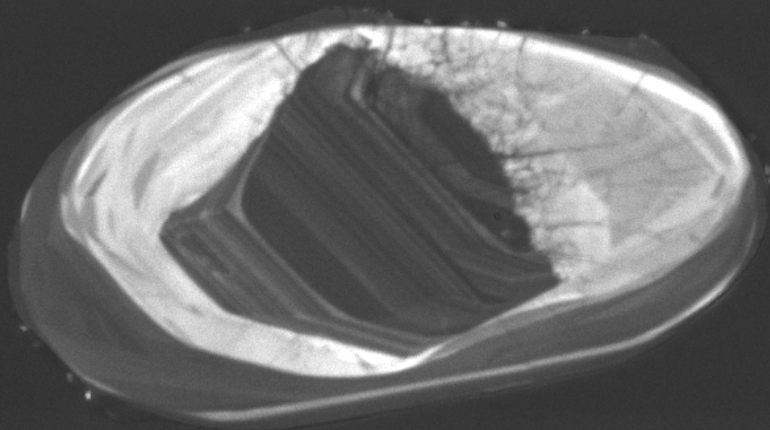


50 μ m

MIRA3 TESCAN

NRCan LMS GSC





120

SEM HV: 10.0 kV

WD: 16.98 mm

MIRA3 TESCAN

View field: 161 μm

SEM MAG: 1.72 kx

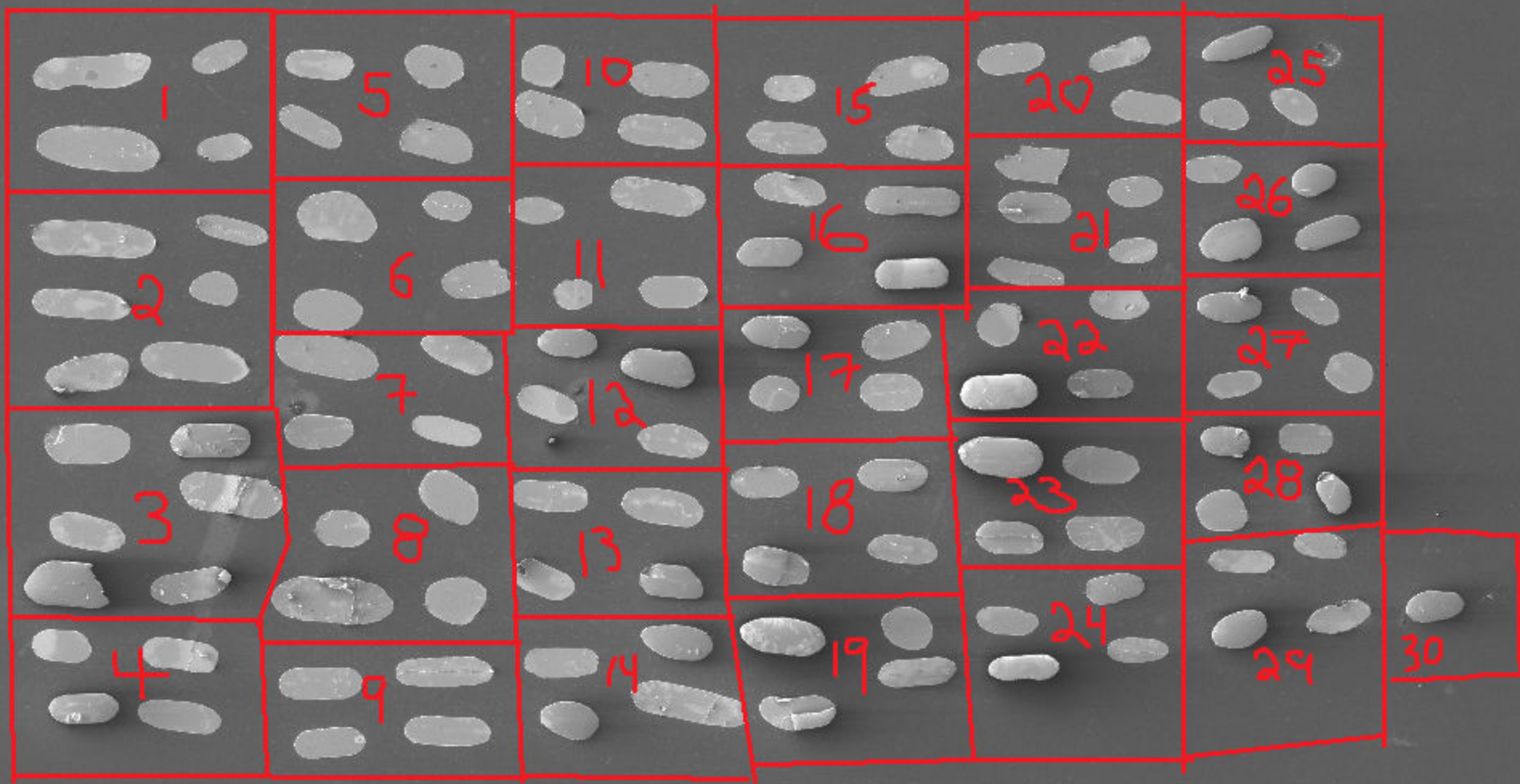
50 μm

12626-30-cl

Det: CL

NRCan LMS GSC





SEM HV: 10.0 kV

WD: 49.69 mm

View field: 2.63 mm

SEM MAG: 105 x

12626-map

Det: SE

500 μ m

MIRA3 TESCAN

NRCan LMS GSC

