

SEM HV: 10.0 kV

WD: 17.02 mm

View field: 610  $\mu\text{m}$

SEM MAG: 454 x



100  $\mu\text{m}$

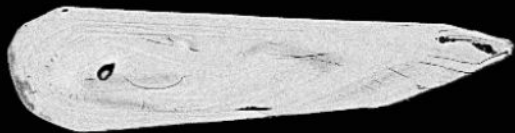
12627-01-cl

Det: CL

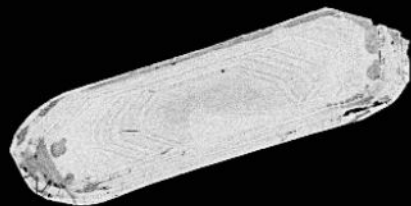
MIRA3 TESCAN

NRCan LMS GSC

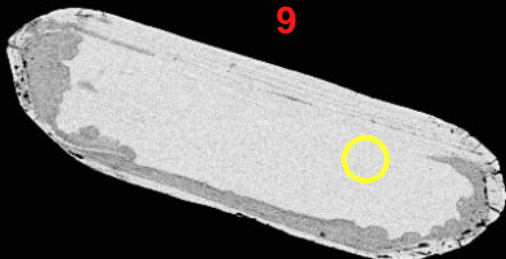




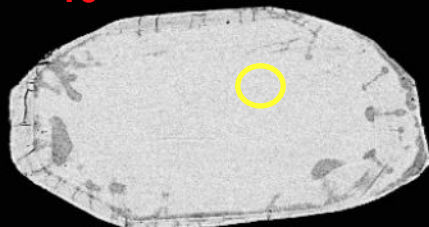
7



8

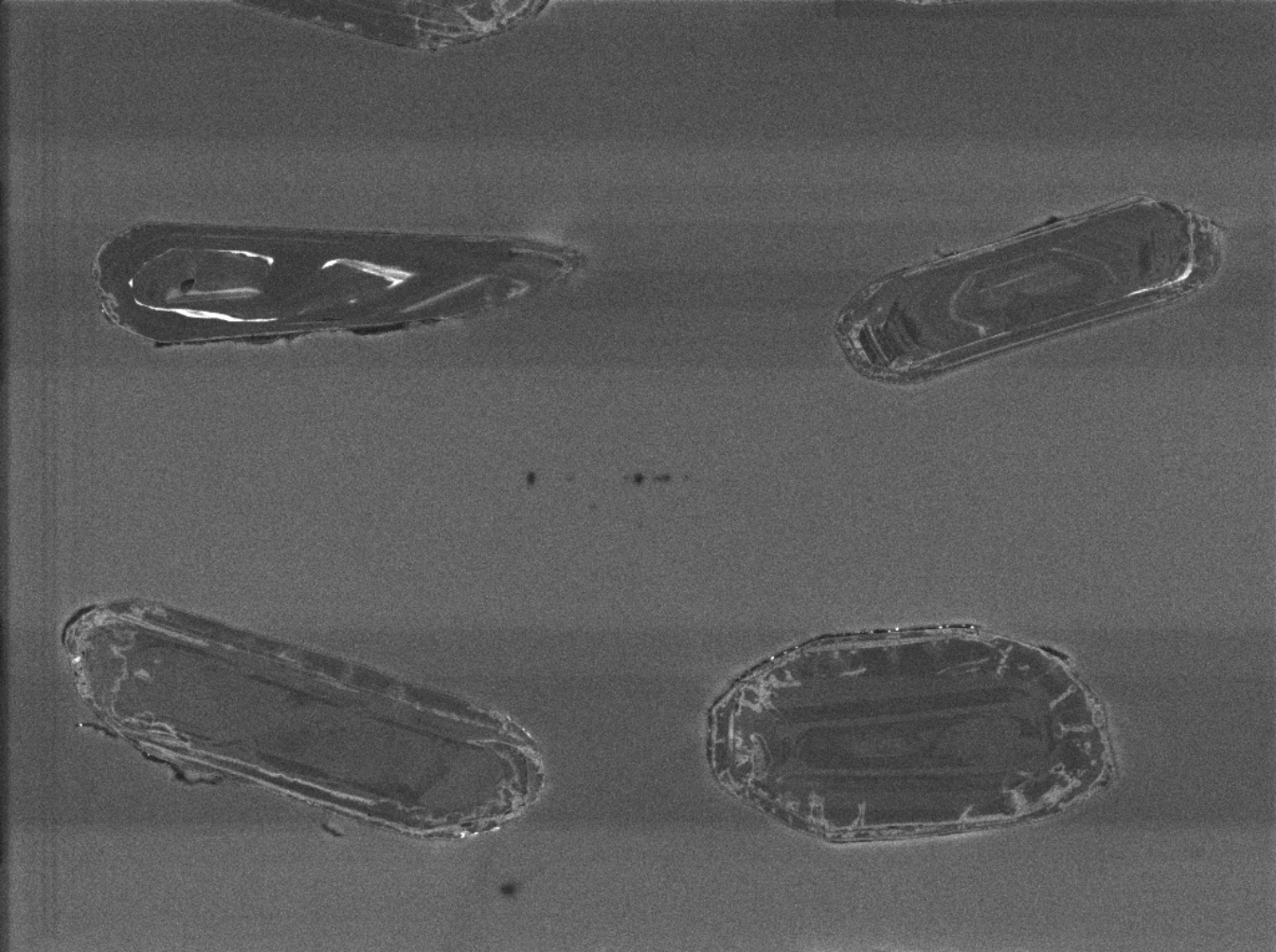


9



10

100µm



SEM HV: 10.0 kV

WD: 17.01 mm

View field: 482  $\mu$ m

SEM MAG: 574 x



MIRA3 TESCAN

12627-02-cl

Det: CL

NRCan LMS GSC



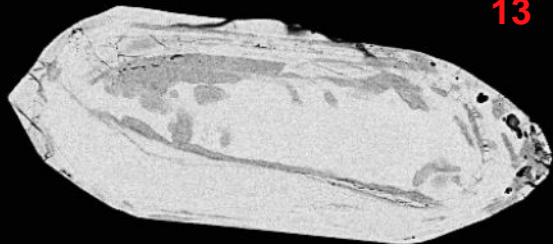
11



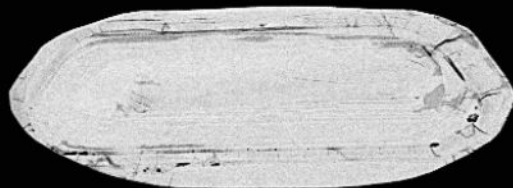
12



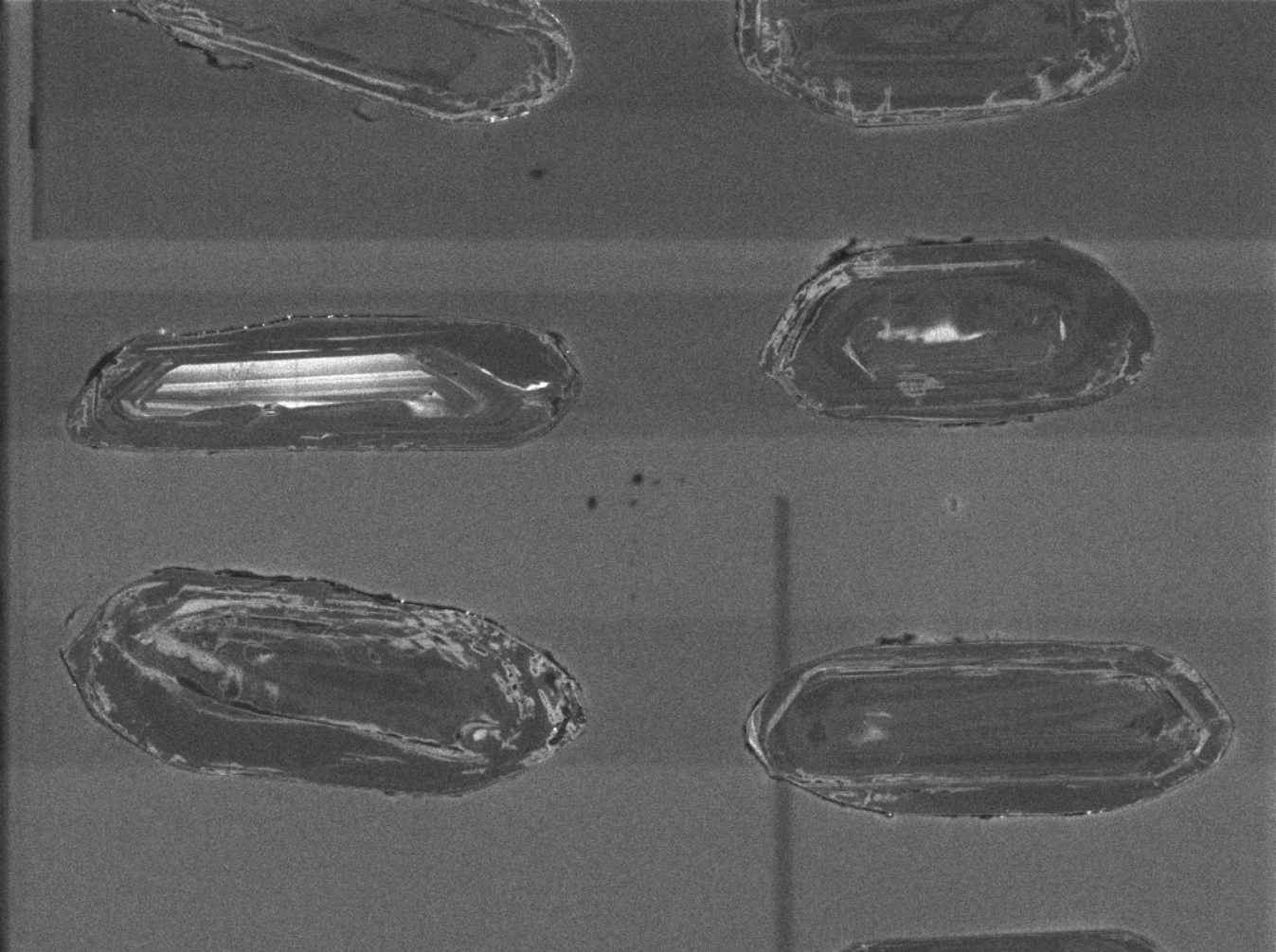
13



14



100µm



SEM HV: 10.0 kV

WD: 17.01 mm

View field: 487  $\mu\text{m}$

SEM MAG: 568 x

100  $\mu\text{m}$

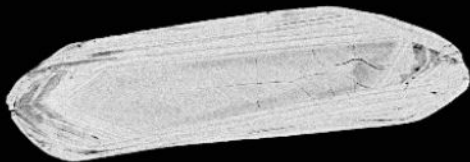
MIRA3 TESCAN

12627-03-cl

Det: CL

NRCan LMS GSC

15

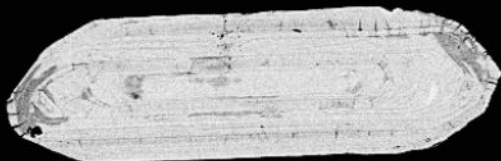


16

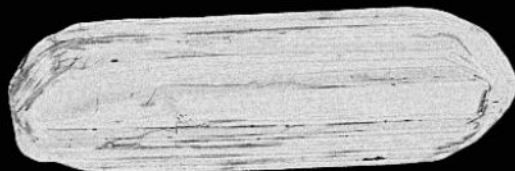


2

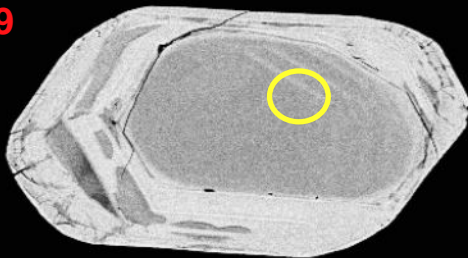
17



18



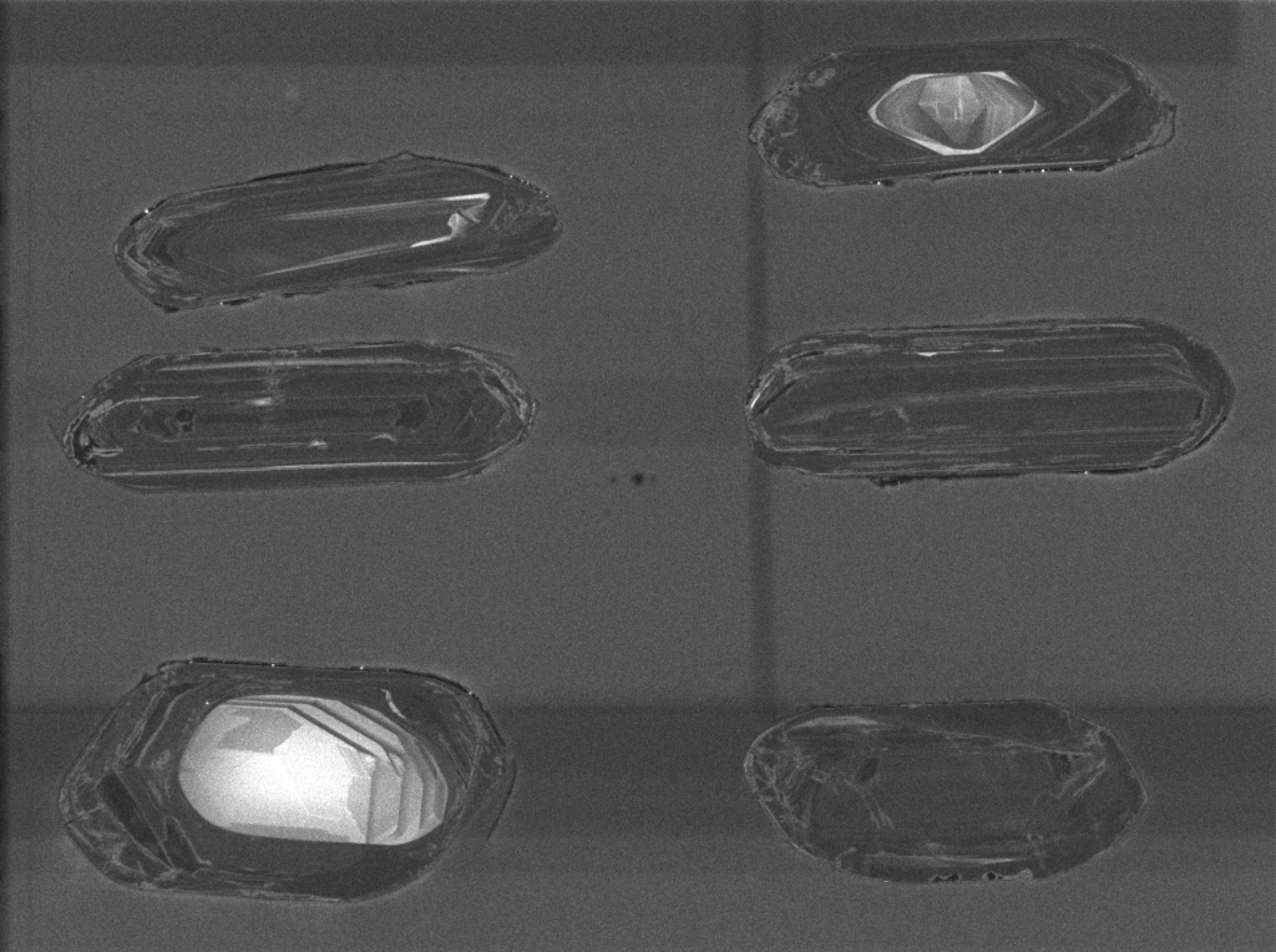
19



20



100µm



SEM HV: 10.0 kV

WD: 17.01 mm

View field: 497  $\mu\text{m}$

SEM MAG: 557 x



12627-04-cl

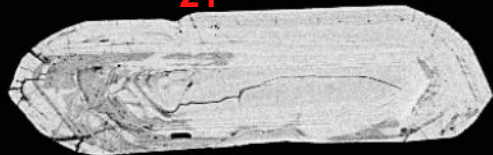
Det: CL

MIRA3 TESCAN

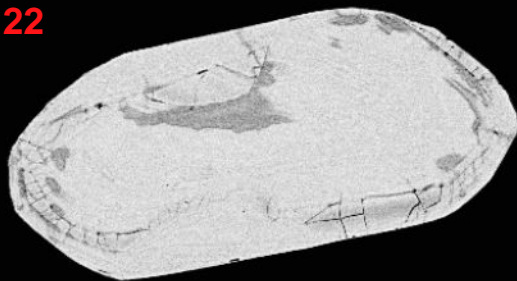
NRCan LMS GSC



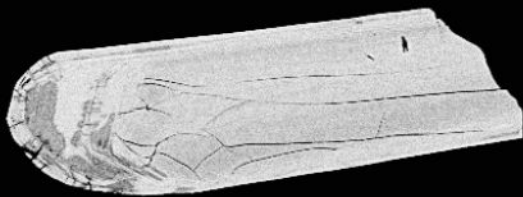
21



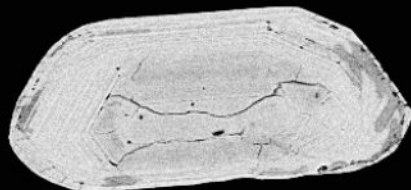
22



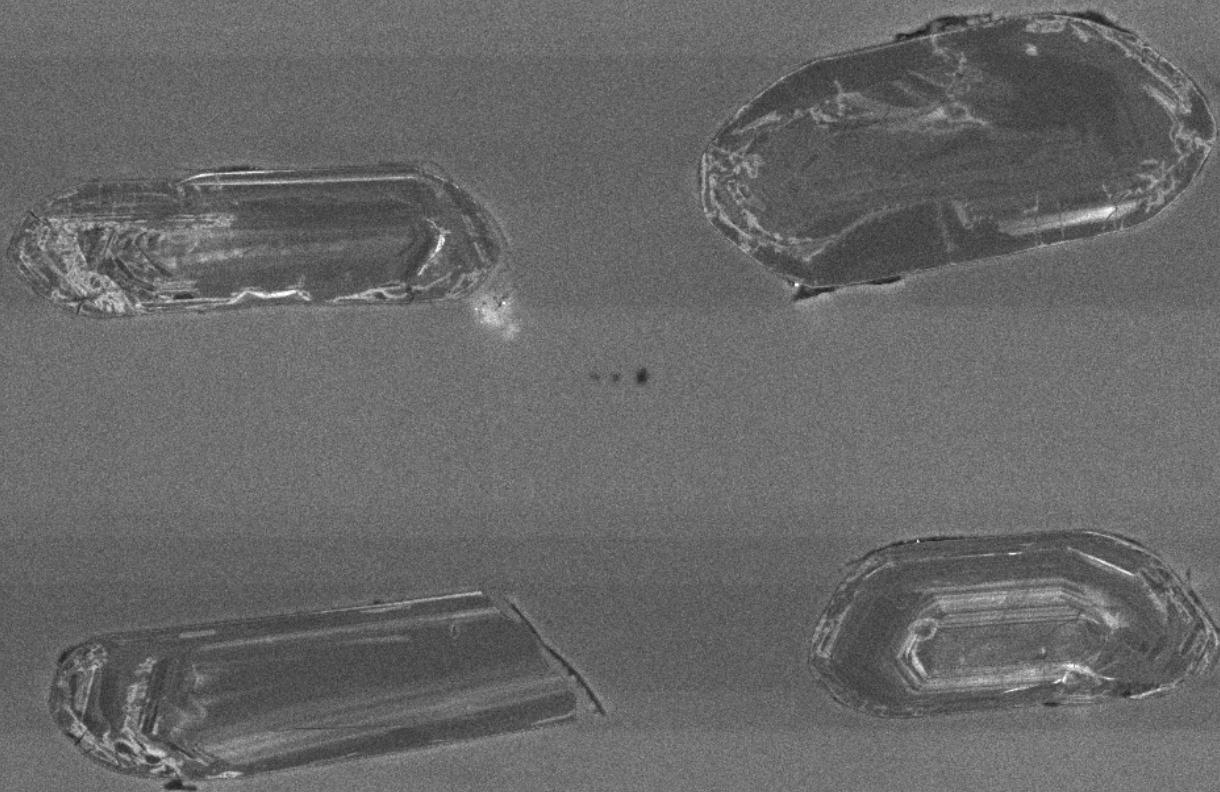
23



24



100µm



SEM HV: 10.0 kV

WD: 17.01 mm

View field: 466  $\mu\text{m}$

SEM MAG: 594 x

100  $\mu\text{m}$

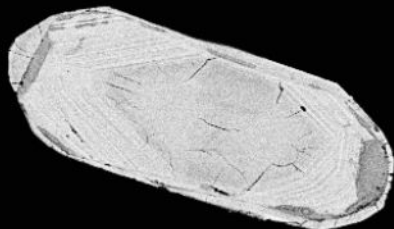
MIRA3 TESCAN

12627-05-cl

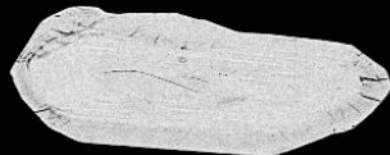
Det: CL

NRCan LMS GSC

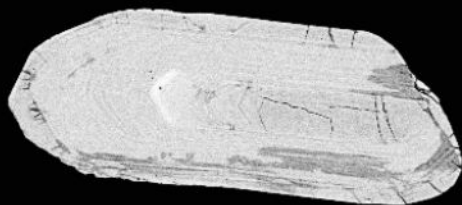
25



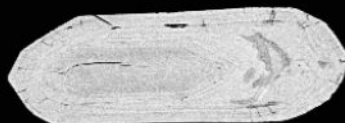
26



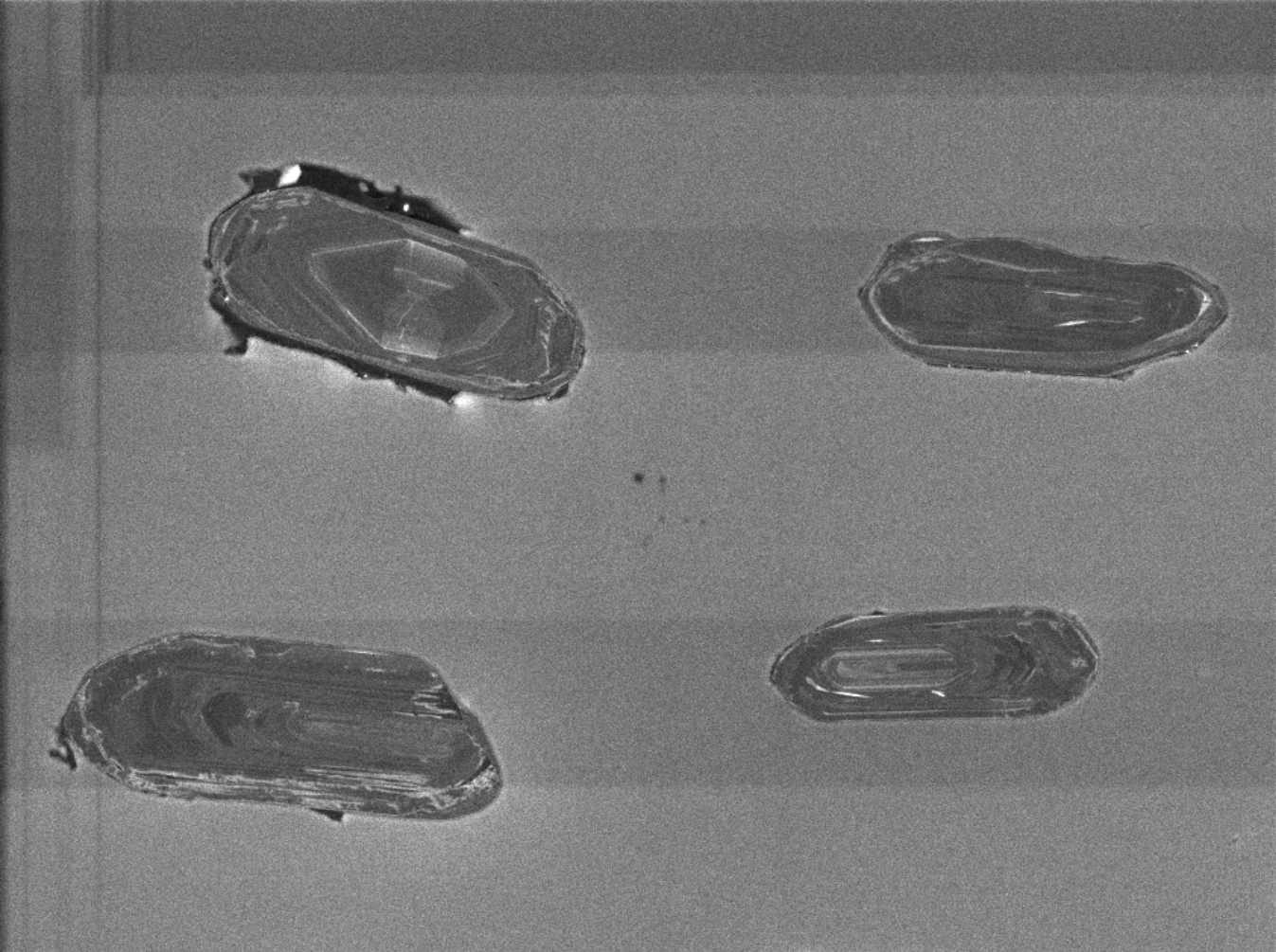
27



28



100µm



SEM HV: 10.0 kV

WD: 17.01 mm

View field: 499  $\mu\text{m}$

SEM MAG: 554 x



100  $\mu\text{m}$

12627-06-cl

Det: CL

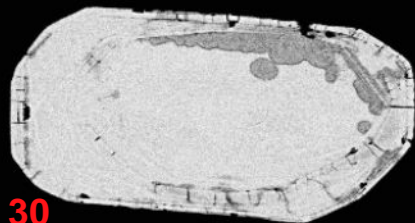
MIRA3 TESCAN

NRCan LMS GSC

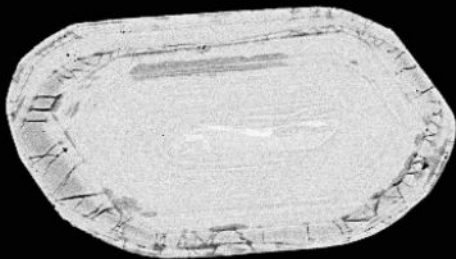




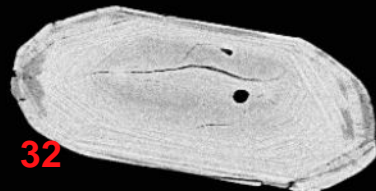
29



30

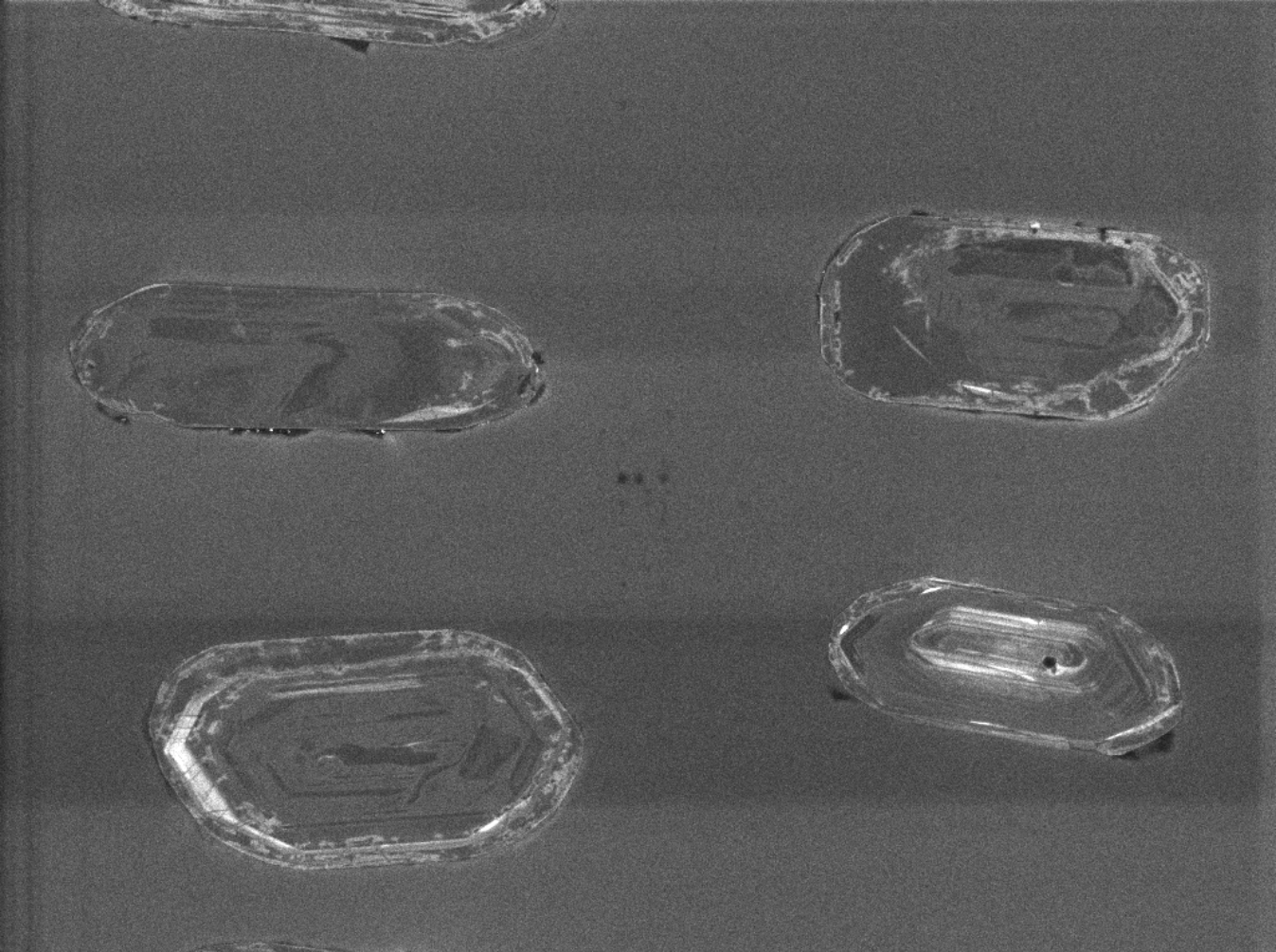


31



32

100µm



SEM HV: 10.0 kV

WD: 17.01 mm

View field: 422  $\mu$ m

SEM MAG: 656 x

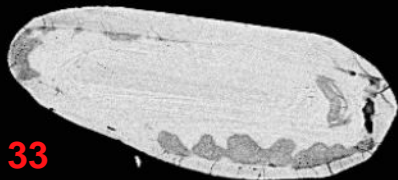
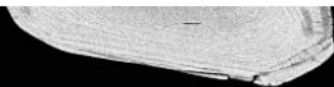
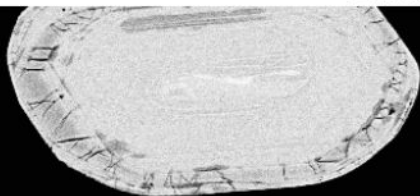
100  $\mu$ m

12627-07-cl

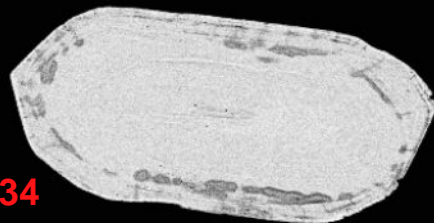
Det: CL

MIRA3 TESCAN

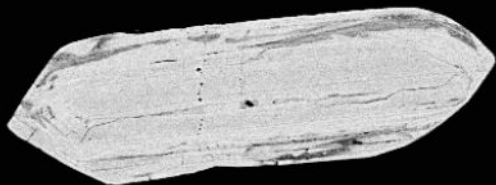
NRCan LMS GSC



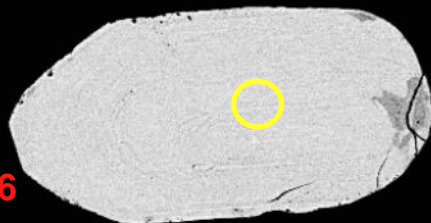
33



34

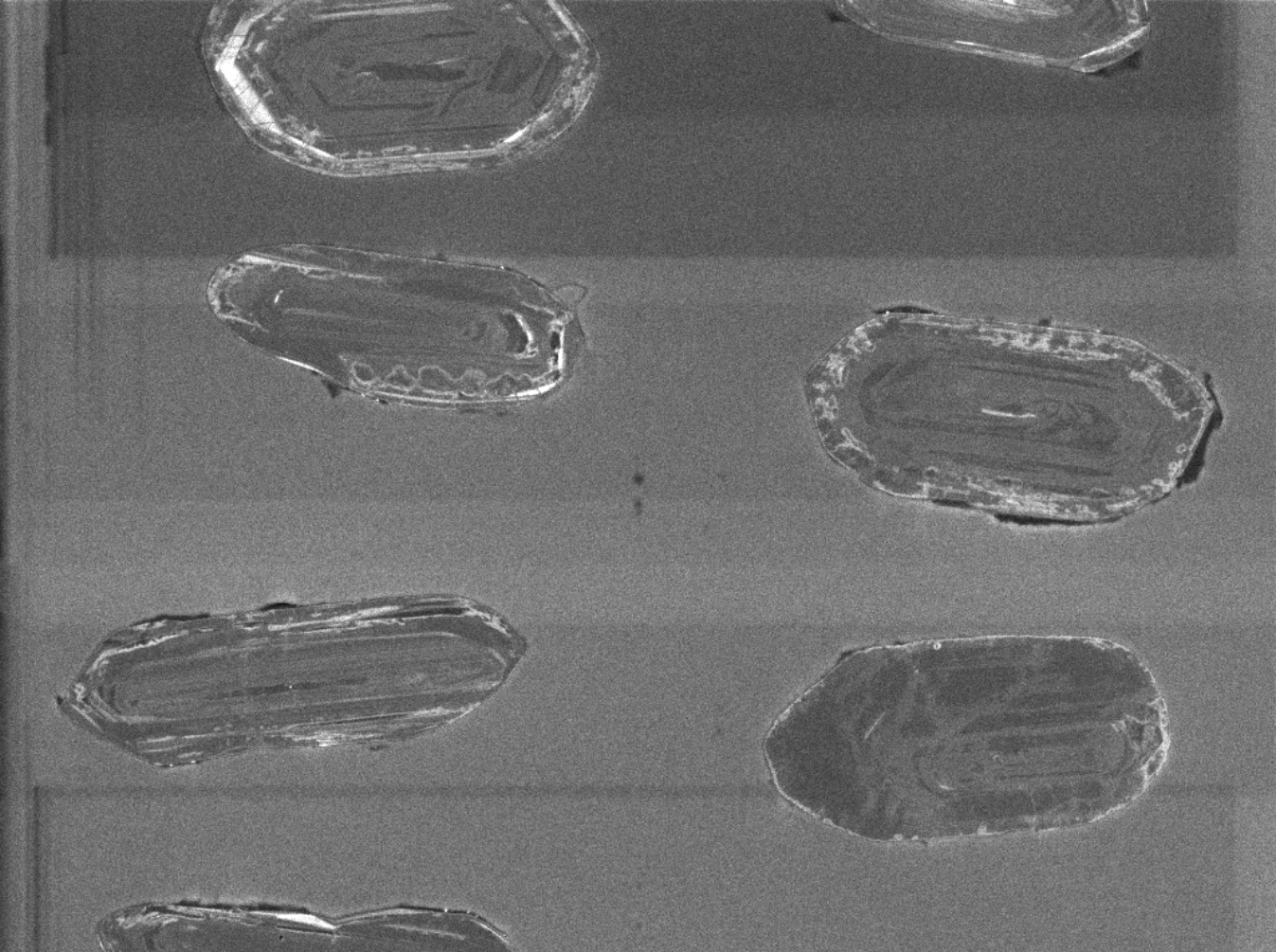


35



36

100µm



SEM HV: 10.0 kV

WD: 17.01 mm

View field: 460  $\mu$ m

SEM MAG: 602 x

100  $\mu$ m

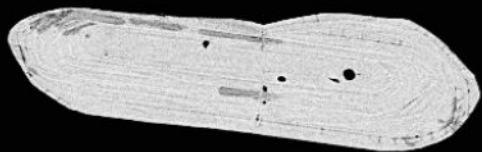
MIRA3 TESCAN

12627-08-cl

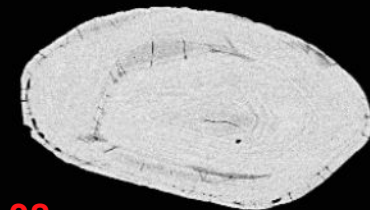
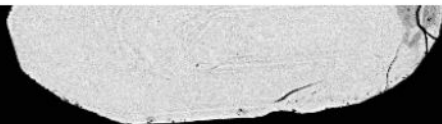
Det: CL

NRCan LMS GSC





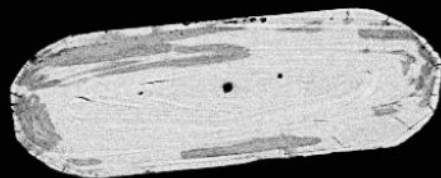
37



38

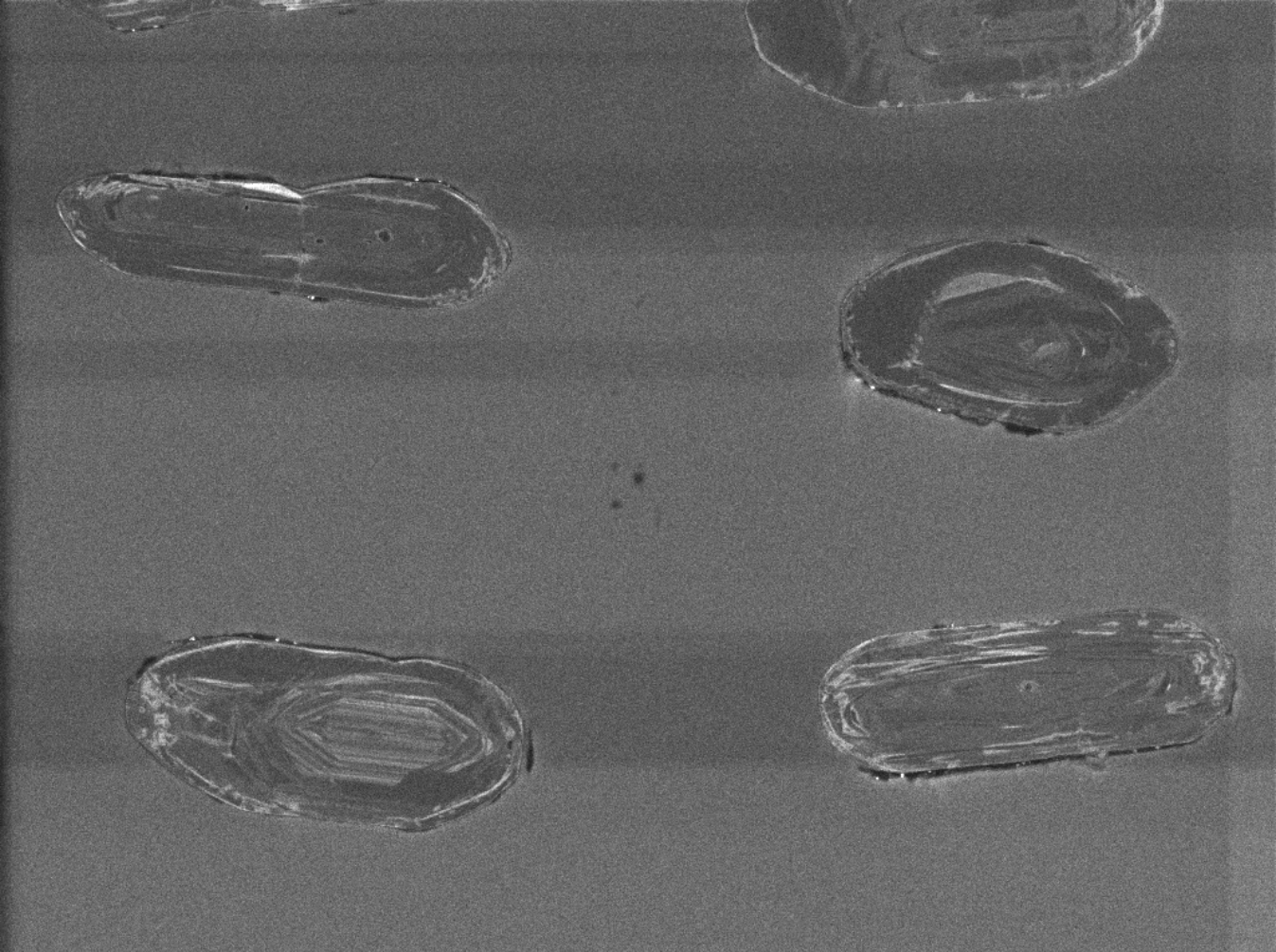


39



40

100µm



SEM HV: 10.0 kV

WD: 17.01 mm

View field: 447  $\mu$ m

SEM MAG: 620 x

100  $\mu$ m

12627-09-cl

Det: CL

MIRA3 TESCAN

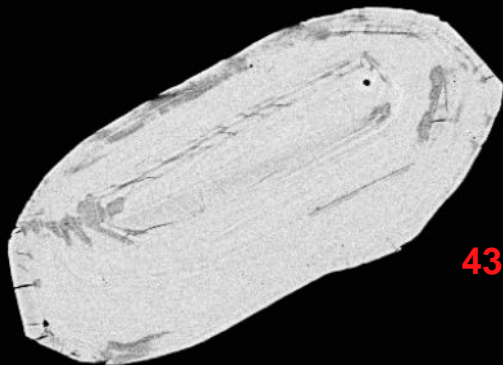
NRCan LMS GSC



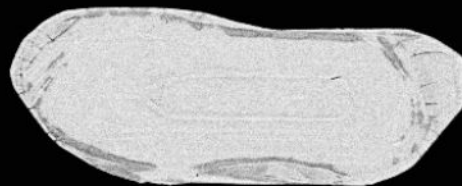
41



42

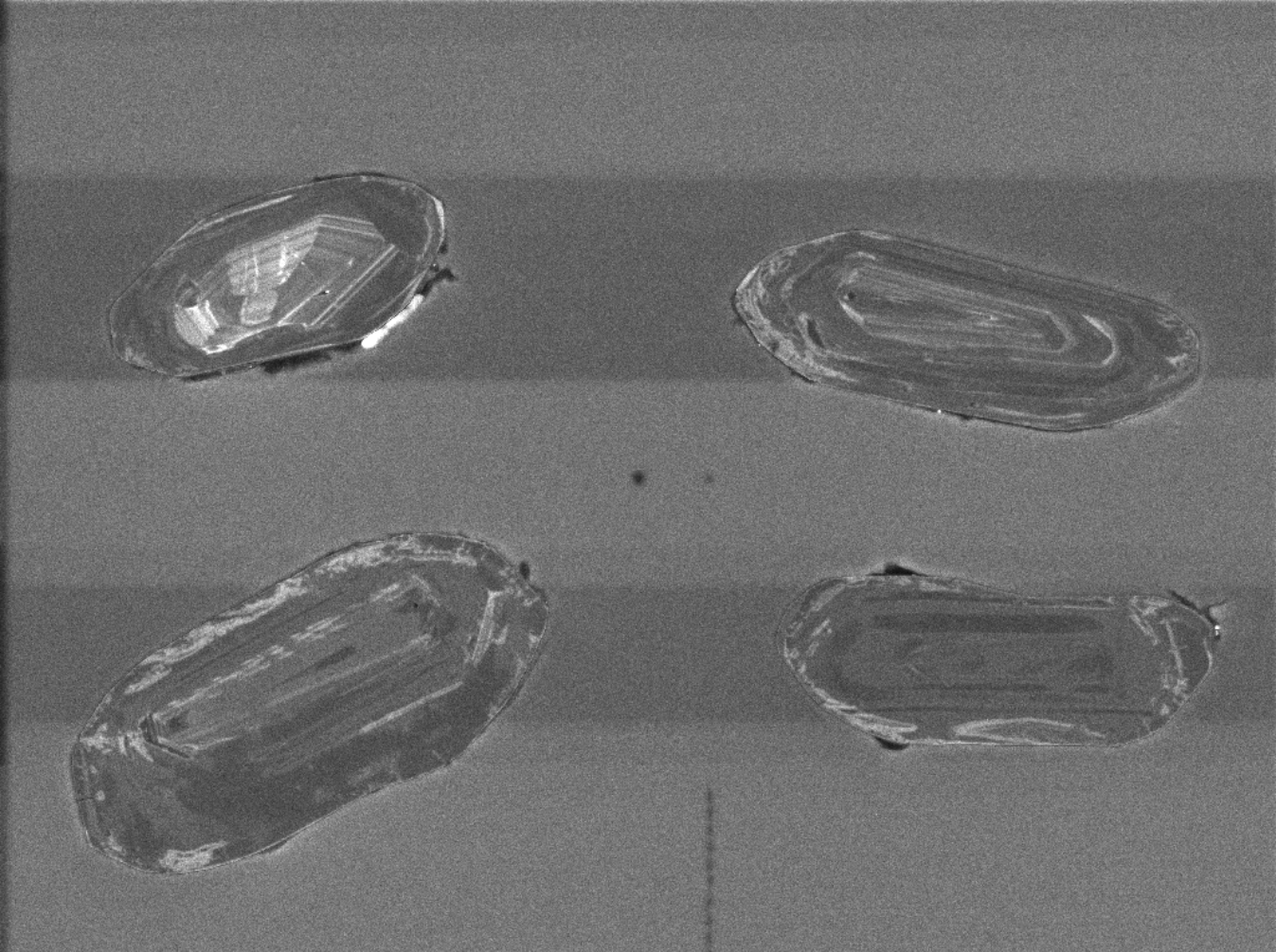


43



44

100µm



SEM HV: 10.0 kV

WD: 17.01 mm

View field: 367  $\mu$ m

SEM MAG: 754 x

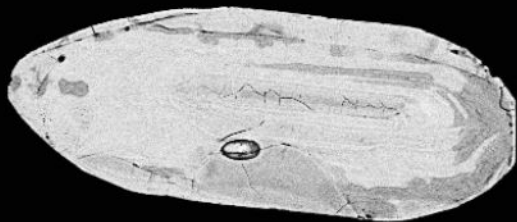
100  $\mu$ m

MIRA3 TESCAN

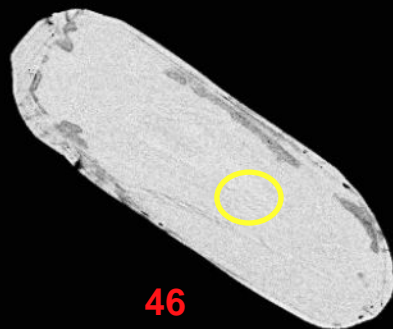
12627-10-cl

Det: CL

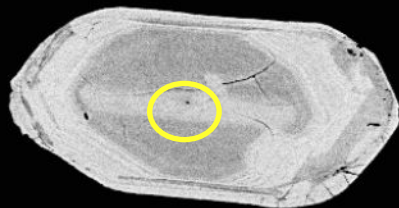
NRCan LMS GSC



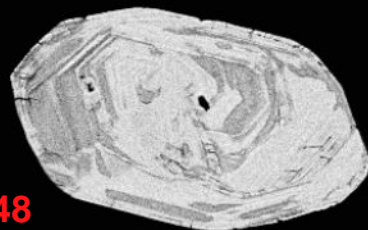
45



46

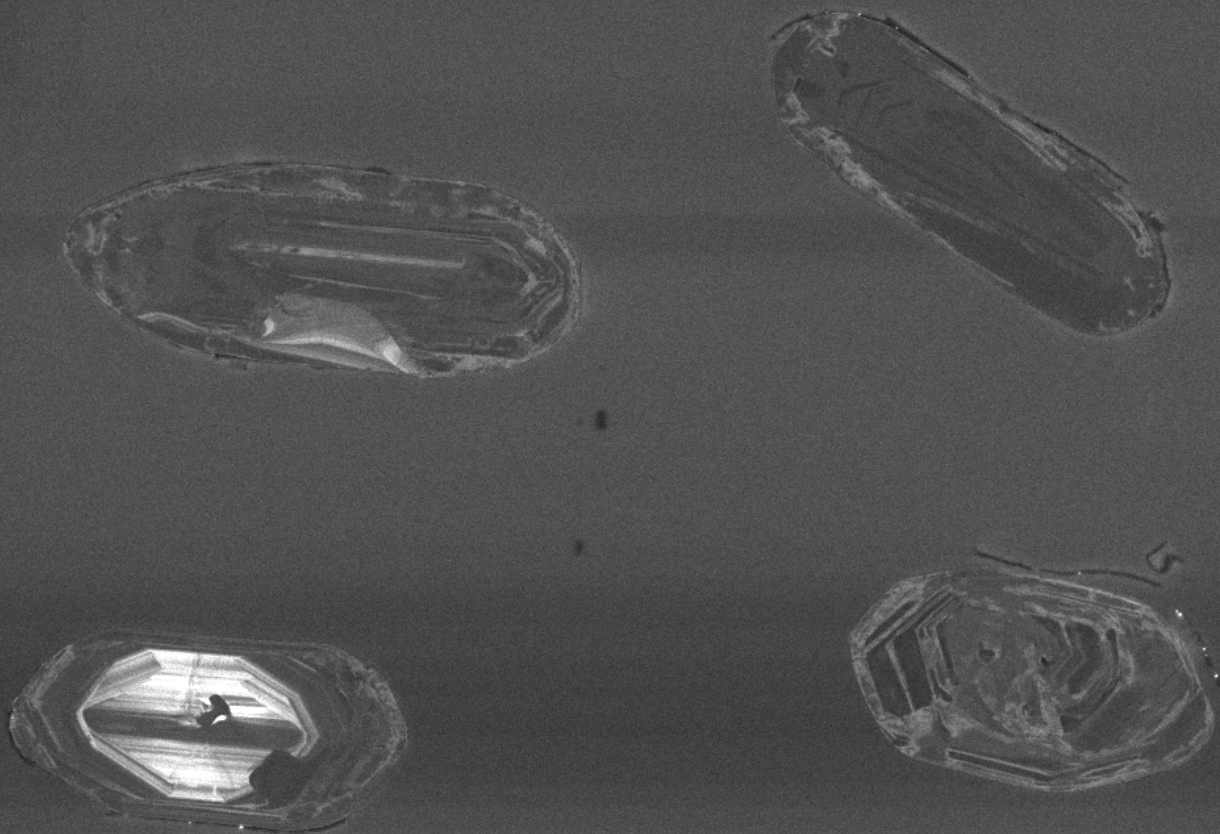


47



48

100μm



SEM HV: 10.0 kV

WD: 17.01 mm

View field: 434  $\mu\text{m}$

SEM MAG: 637 x

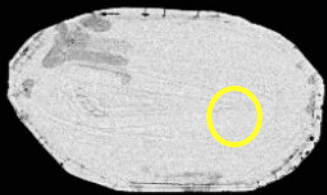
100  $\mu\text{m}$

12627-11-cl

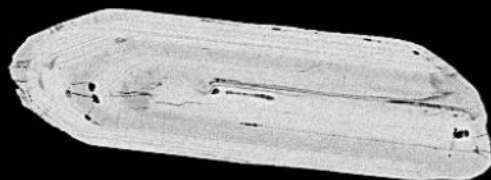
Det: CL

MIRA3 TESCAN

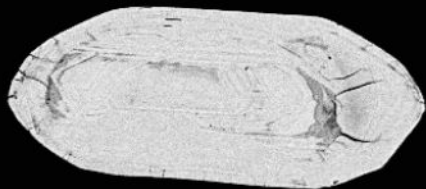
NRCan LMS GSC



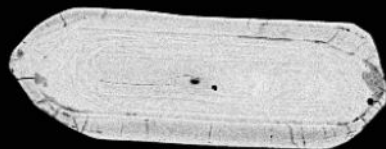
49



50

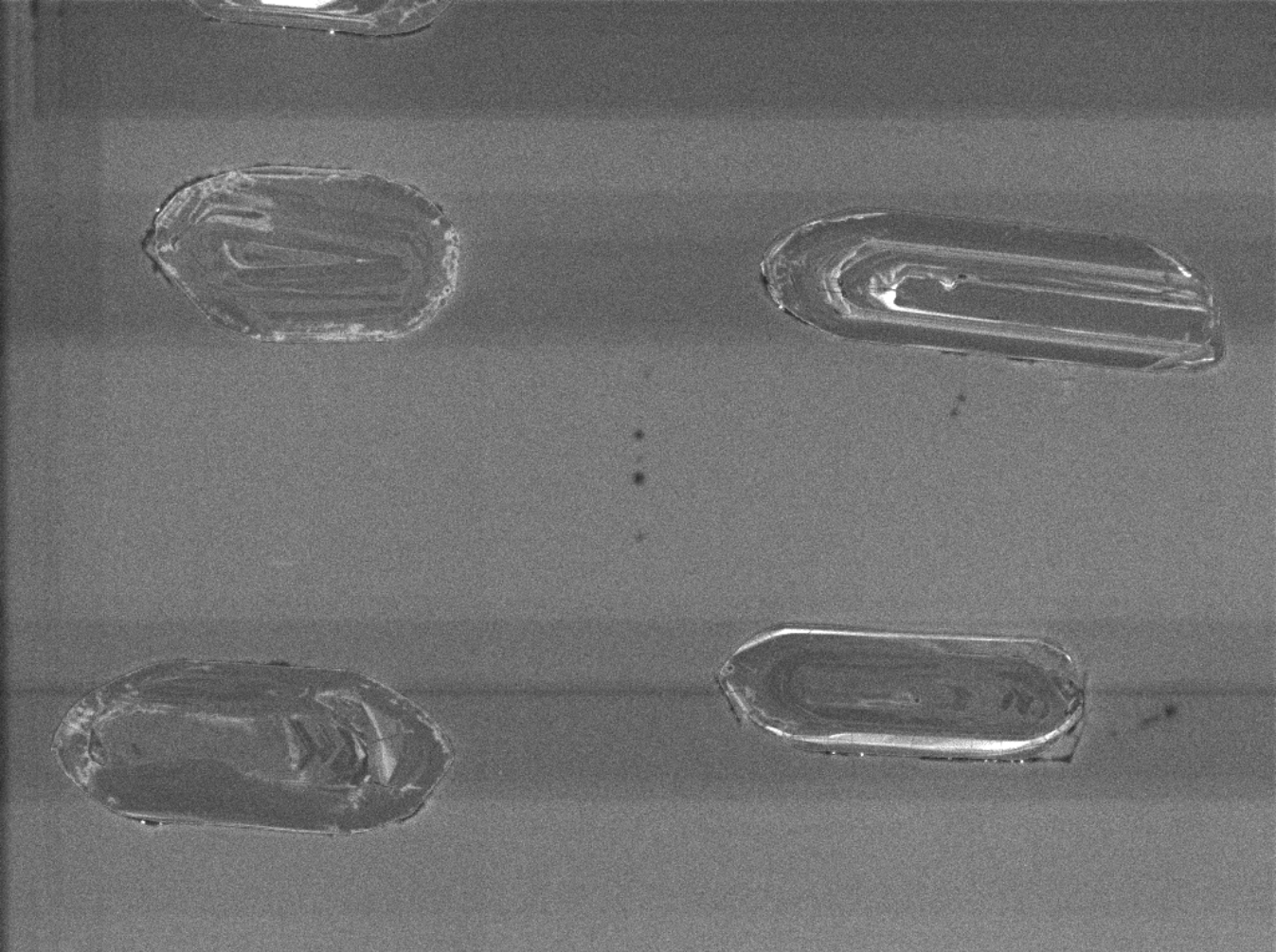


51



52

100µm



SEM HV: 10.0 kV

WD: 17.01 mm

View field: 437  $\mu\text{m}$

SEM MAG: 634 x



100  $\mu\text{m}$

MIRA3 TESCAN

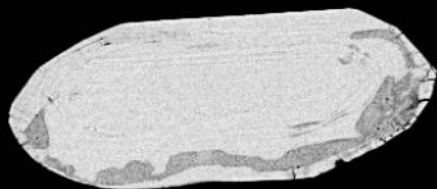
12627-12-cl

Det: CL

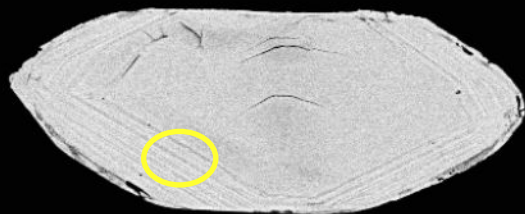
NRCan LMS GSC



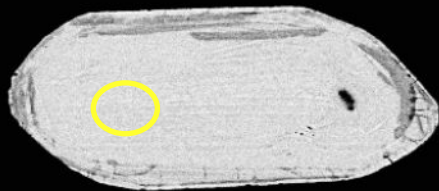




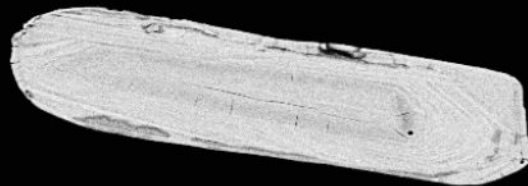
53



54

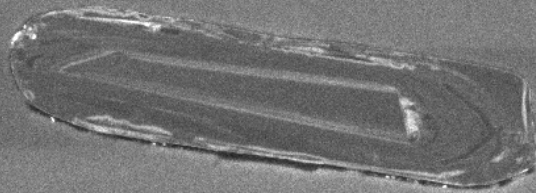
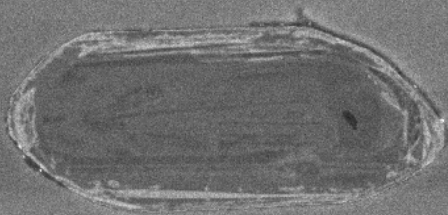
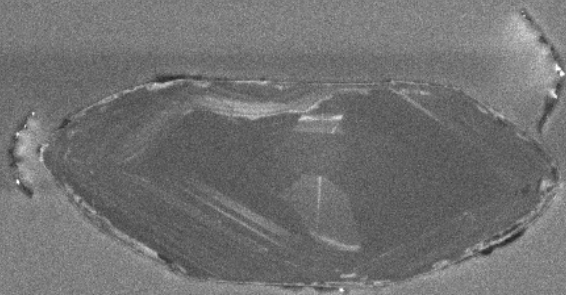
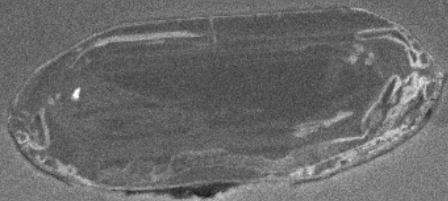


55



56

100µm



SEM HV: 10.0 kV

WD: 17.01 mm

View field: 388  $\mu\text{m}$

SEM MAG: 714 x

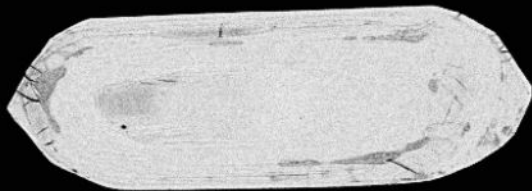
100  $\mu\text{m}$

12627-13-cl

Det: CL

MIRA3 TESCAN

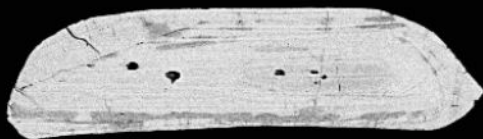
NRCan LMS GSC



57



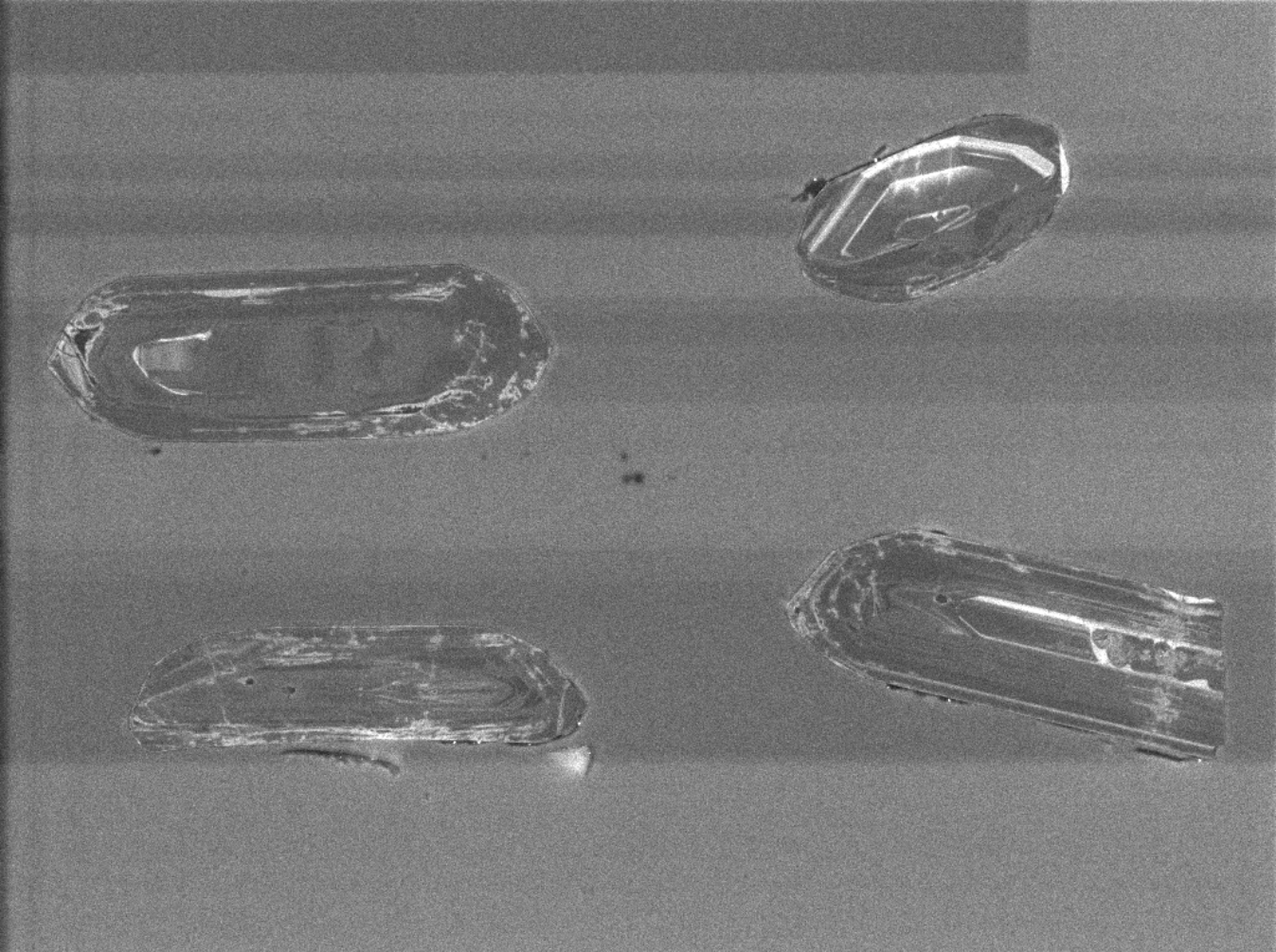
58



59



60



SEM HV: 10.0 kV

WD: 17.01 mm

View field: 455  $\mu\text{m}$

SEM MAG: 608 x



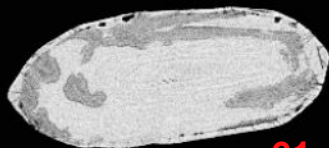
100  $\mu\text{m}$

12627-14-cl

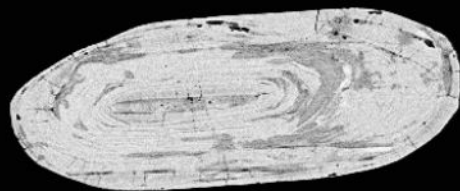
Det: CL

MIRA3 TESCAN

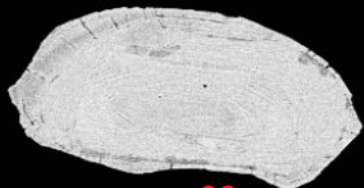
NRCan LMS GSC



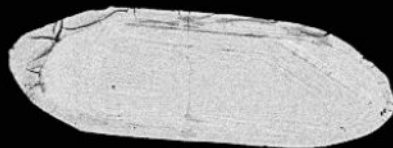
61



62



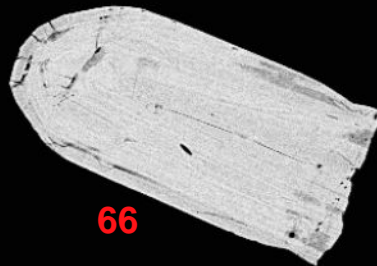
63



64

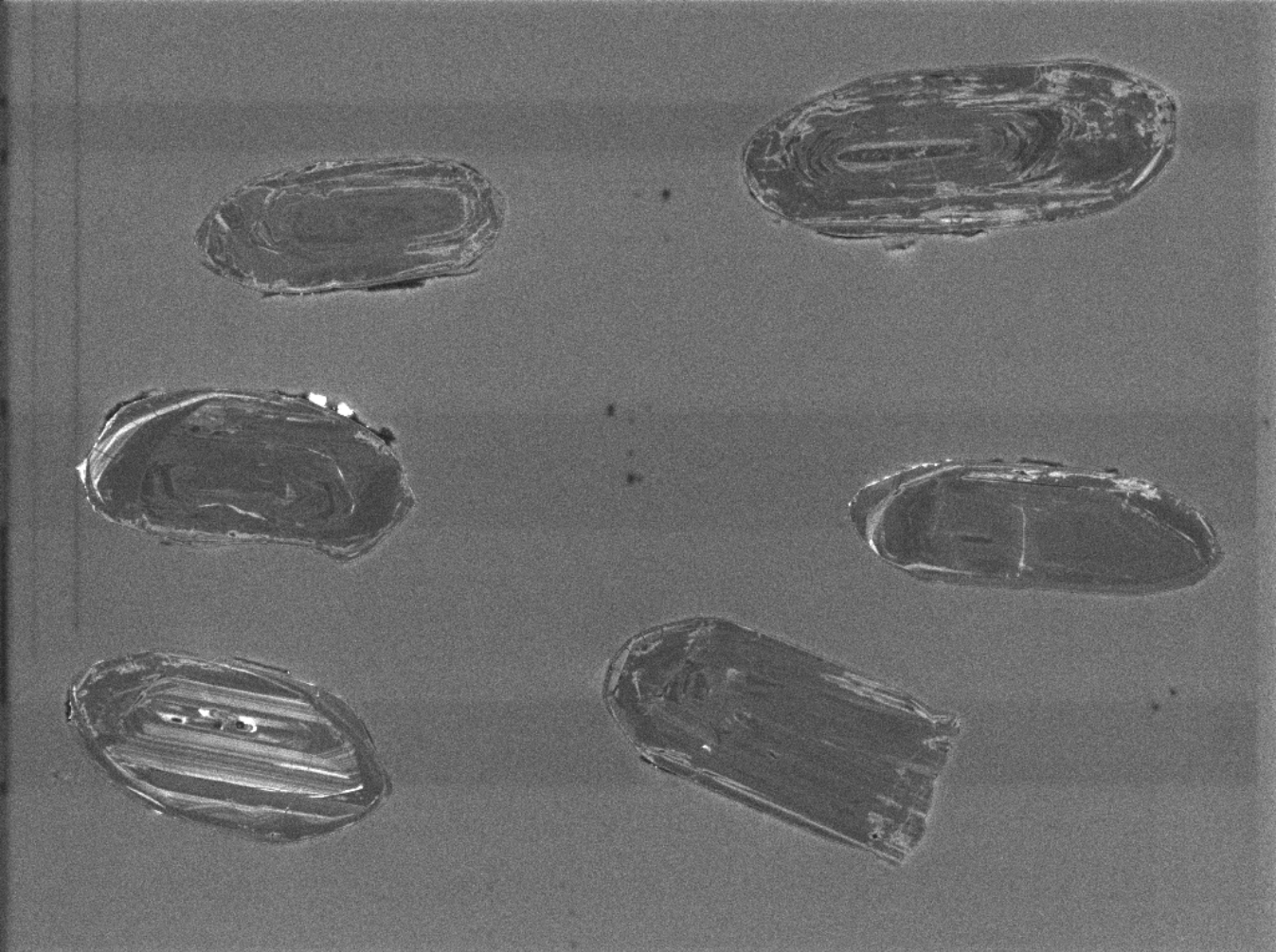


65



66

100µm



SEM HV: 10.0 kV

WD: 17.01 mm

View field: 512  $\mu\text{m}$

SEM MAG: 540 x



100  $\mu\text{m}$

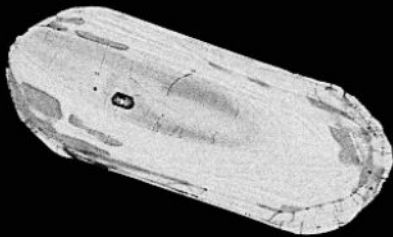
12627-15-cl

Det: CL

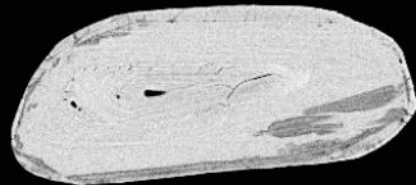
MIRA3 TESCAN

NRCan LMS GSC





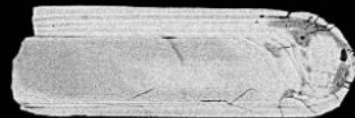
67



68

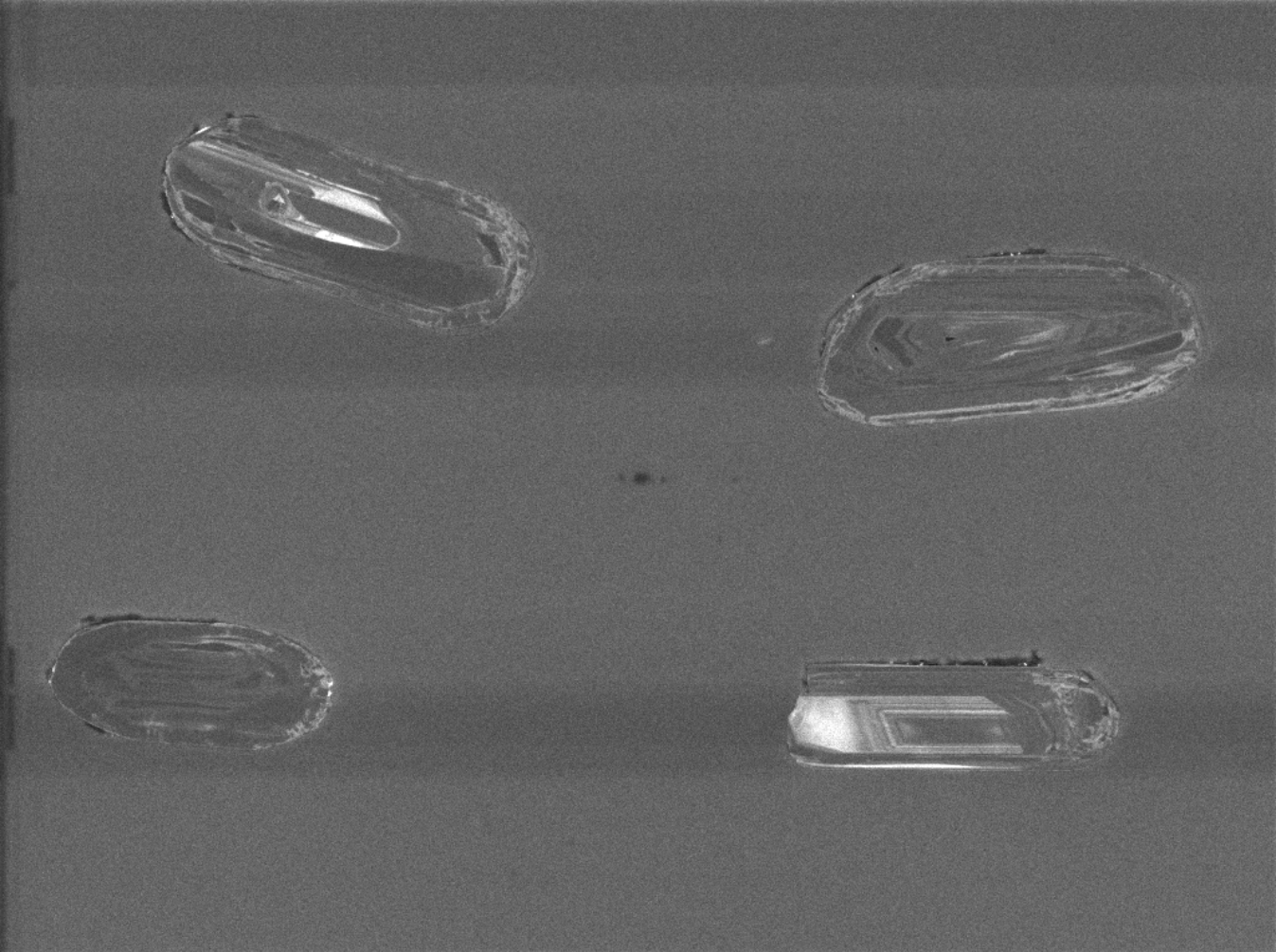


69



70

100µm



SEM HV: 10.0 kV

WD: 17.01 mm

View field: 464  $\mu\text{m}$

SEM MAG: 596 x



100  $\mu\text{m}$

MIRA3 TESCAN

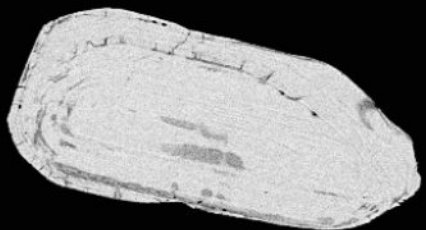
12627-16-cl

Det: CL

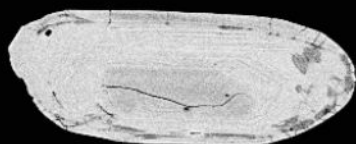
NRCan LMS GSC



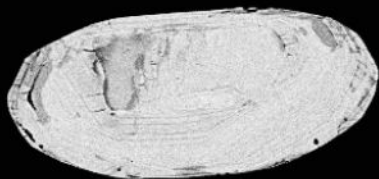




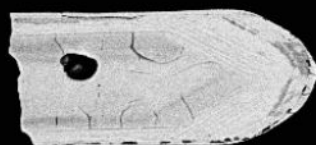
71



72



73

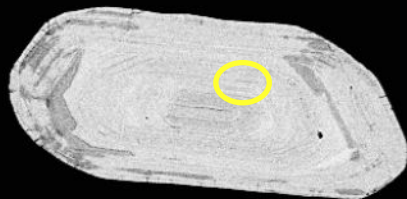


74

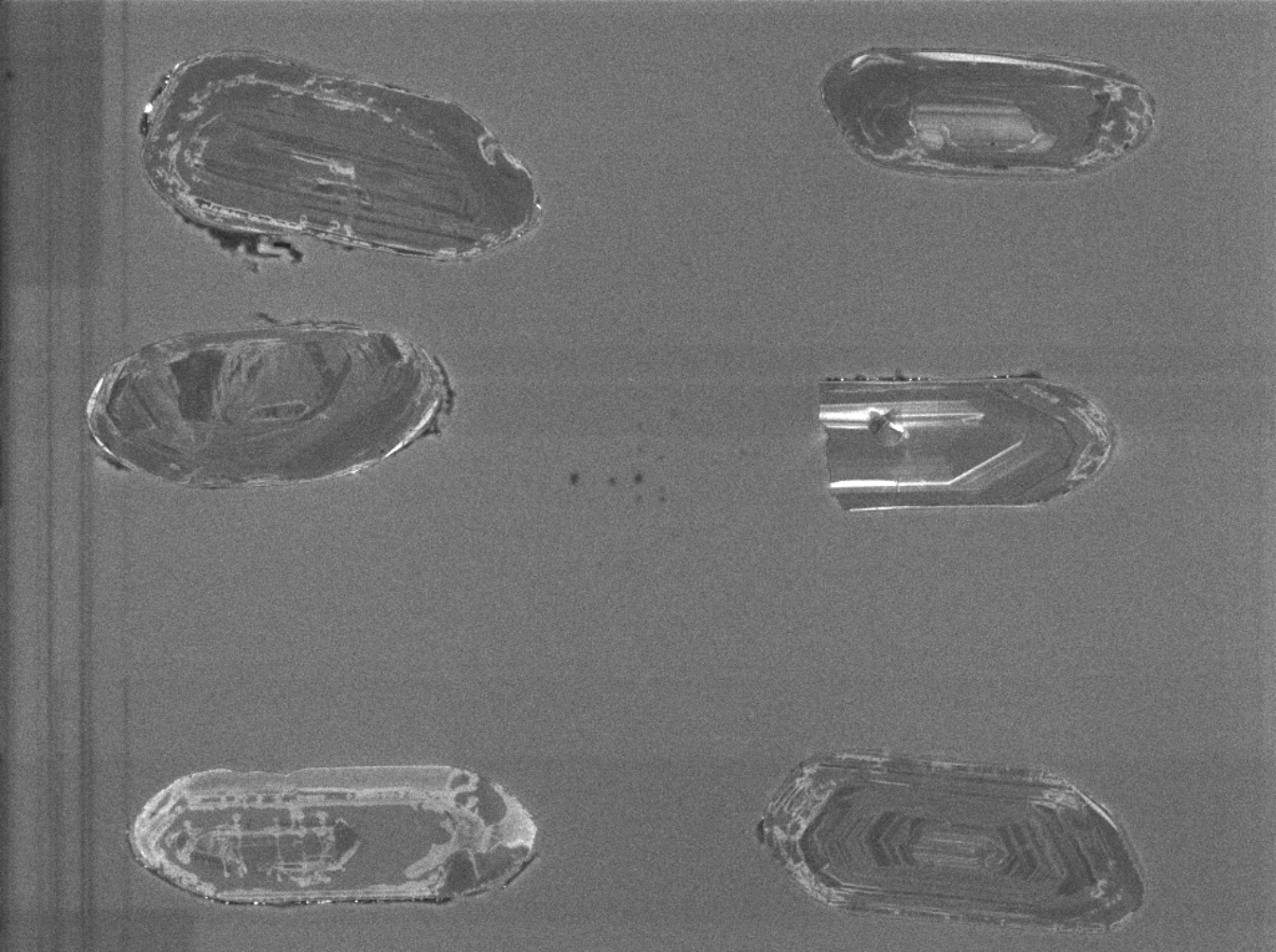


75

76



100µm



SEM HV: 10.0 kV

WD: 17.01 mm

View field: 509  $\mu\text{m}$

SEM MAG: 544 x

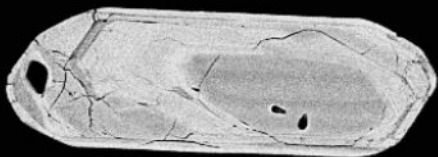
100  $\mu\text{m}$

MIRA3 TESCAN

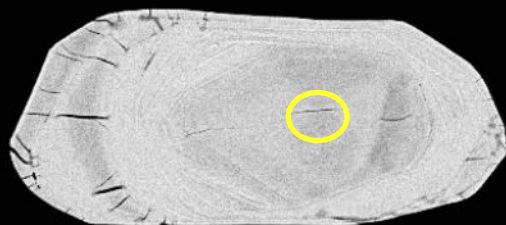
12627-17-cl

Det: CL

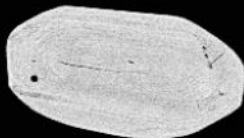
NRCan LMS GSC



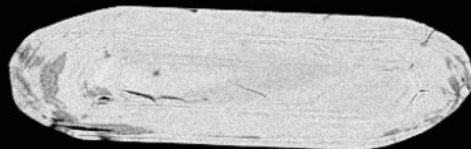
77



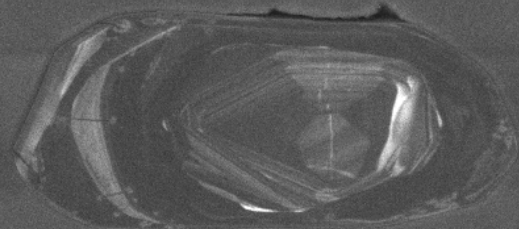
78



79



80



SEM HV: 10.0 kV

WD: 17.01 mm

View field: 457  $\mu\text{m}$

SEM MAG: 606 x

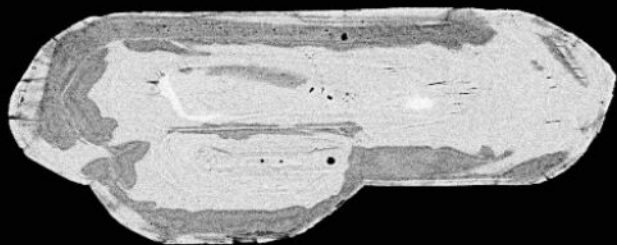
100  $\mu\text{m}$

12627-18-cl

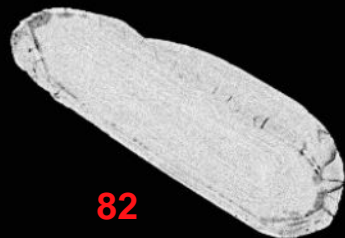
Det: CL

MIRA3 TESCAN

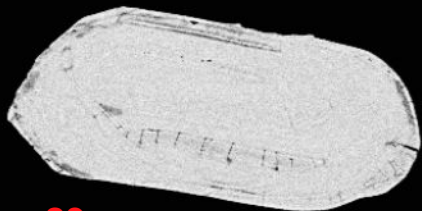
NRCan LMS GSC



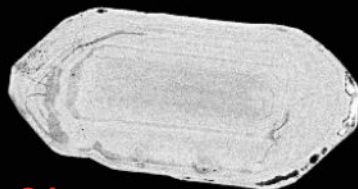
81



82

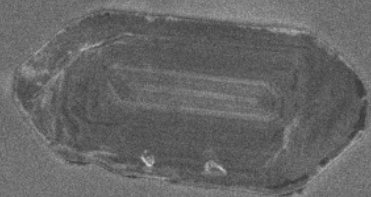
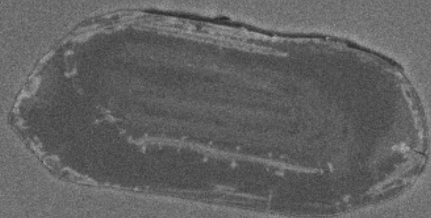
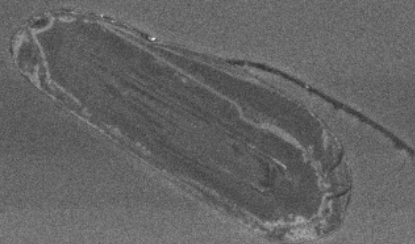
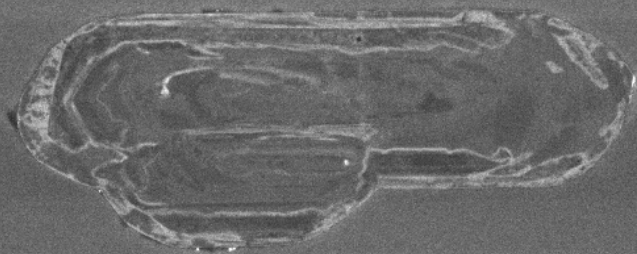


83



84

100µm



SEM HV: 10.0 kV

WD: 17.02 mm

View field: 424  $\mu\text{m}$

SEM MAG: 652 x

100  $\mu\text{m}$

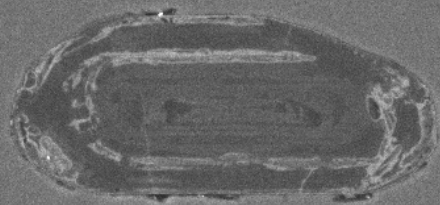
MIRA3 TESCAN

12627-19-cl

Det: CL

NRCan LMS GSC

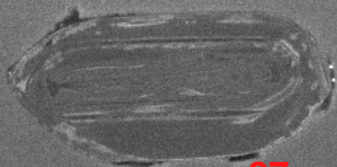
**place holder for missing 12627-20-BSE (to keep pairs aligned)**



85



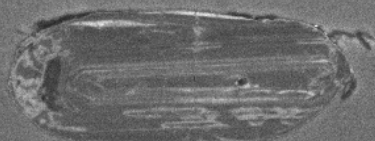
86



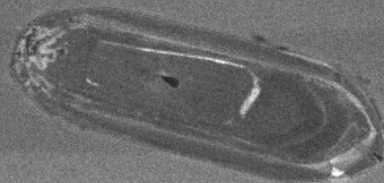
87



88



89



90

SEM HV: 10.0 kV

WD: 17.02 mm

View field: 460  $\mu$ m

SEM MAG: 601 x

100  $\mu$ m

12627-20-cl

Det: CL

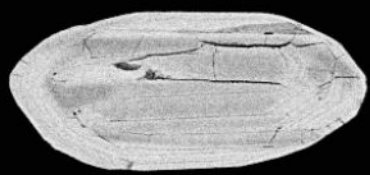
MIRA3 TESCAN

NRCan LMS GSC

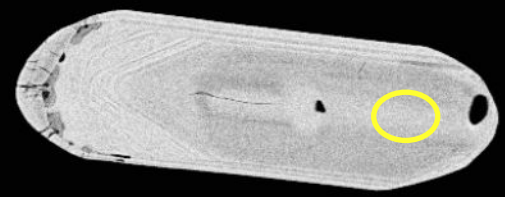


12627-~~20~~-bse

12627-21-BSE, see bottom of file for CL of image 20  
(no BSE for 20)



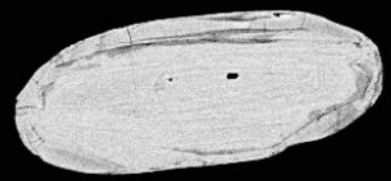
91



92

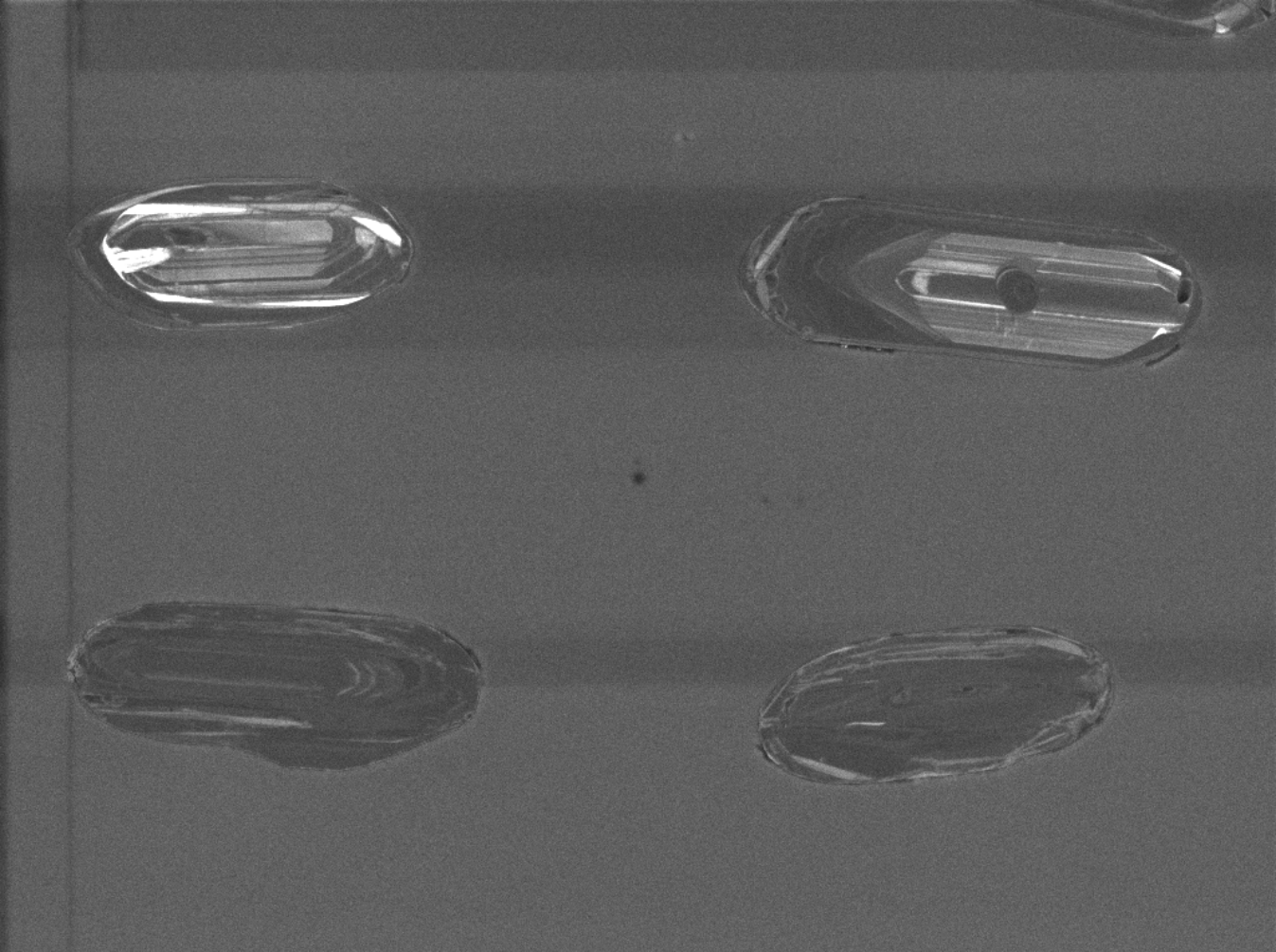


93



94

100µm



SEM HV: 10.0 kV

WD: 17.02 mm

View field: 409  $\mu\text{m}$

SEM MAG: 677 x



100  $\mu\text{m}$

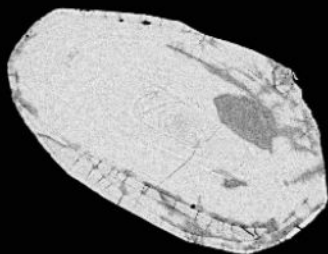
MIRA3 TESCAN

12627-21-cl

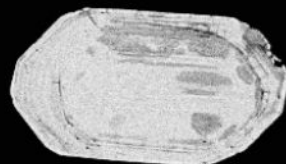
Det: CL

NRCan LMS GSC

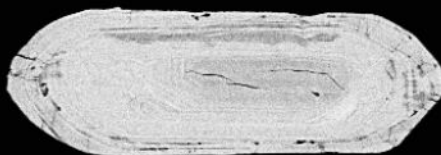




95



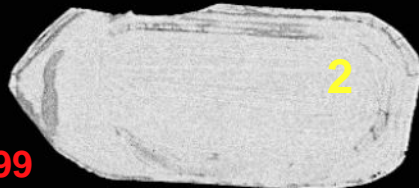
96



97



98



99

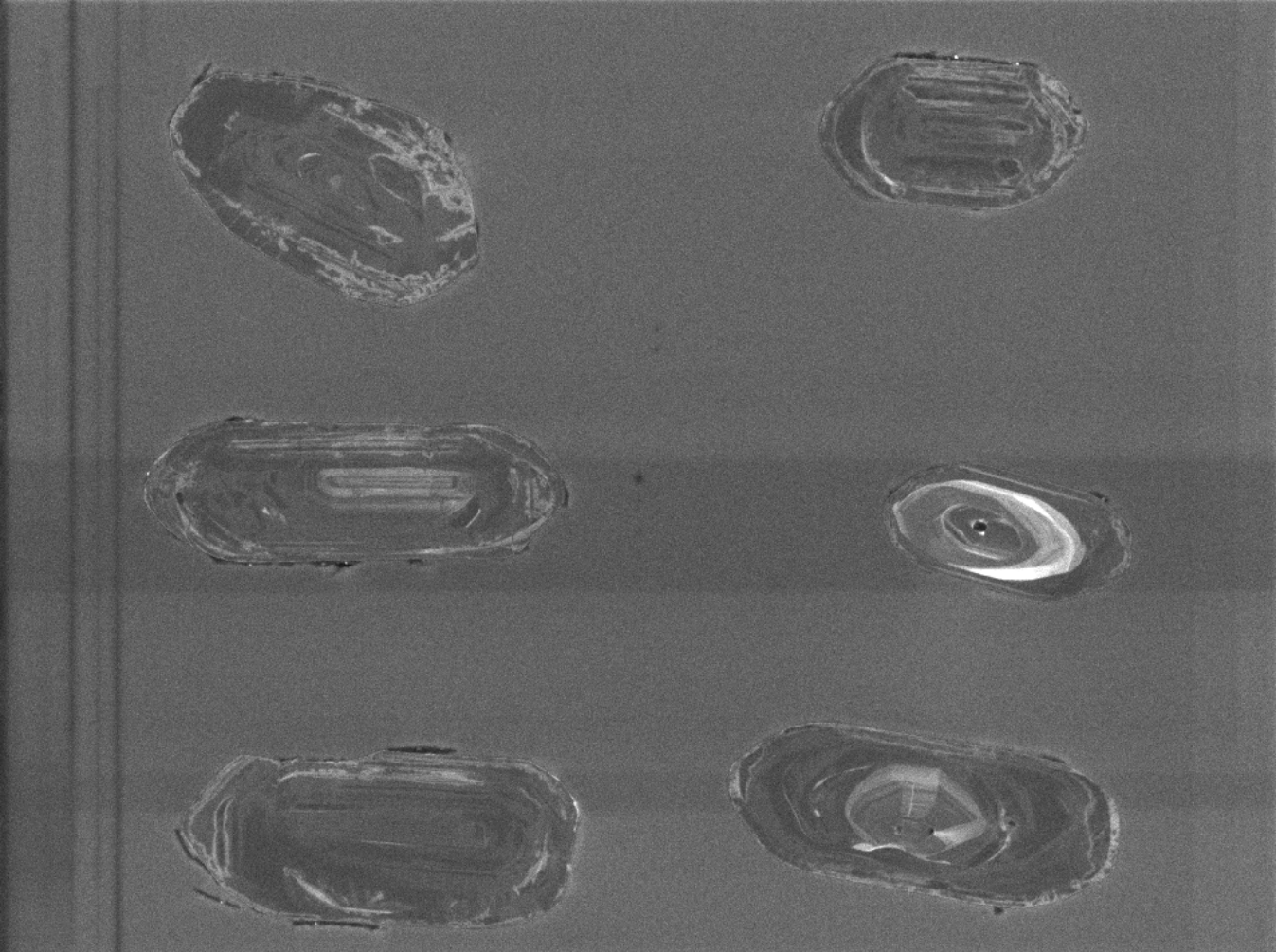
2



100

2

100µm



SEM HV: 10.0 kV

WD: 17.02 mm

View field: 452  $\mu$ m

SEM MAG: 612 x

100  $\mu$ m

12627-22-cl

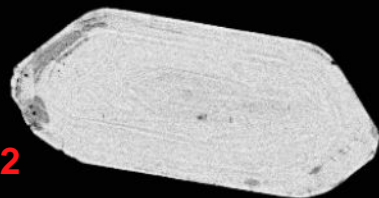
Det: CL

MIRA3 TESCAN

NRCan LMS GSC



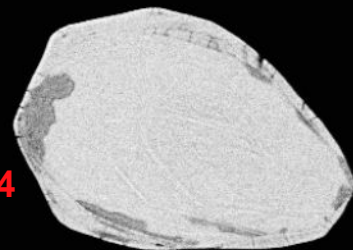
101



102

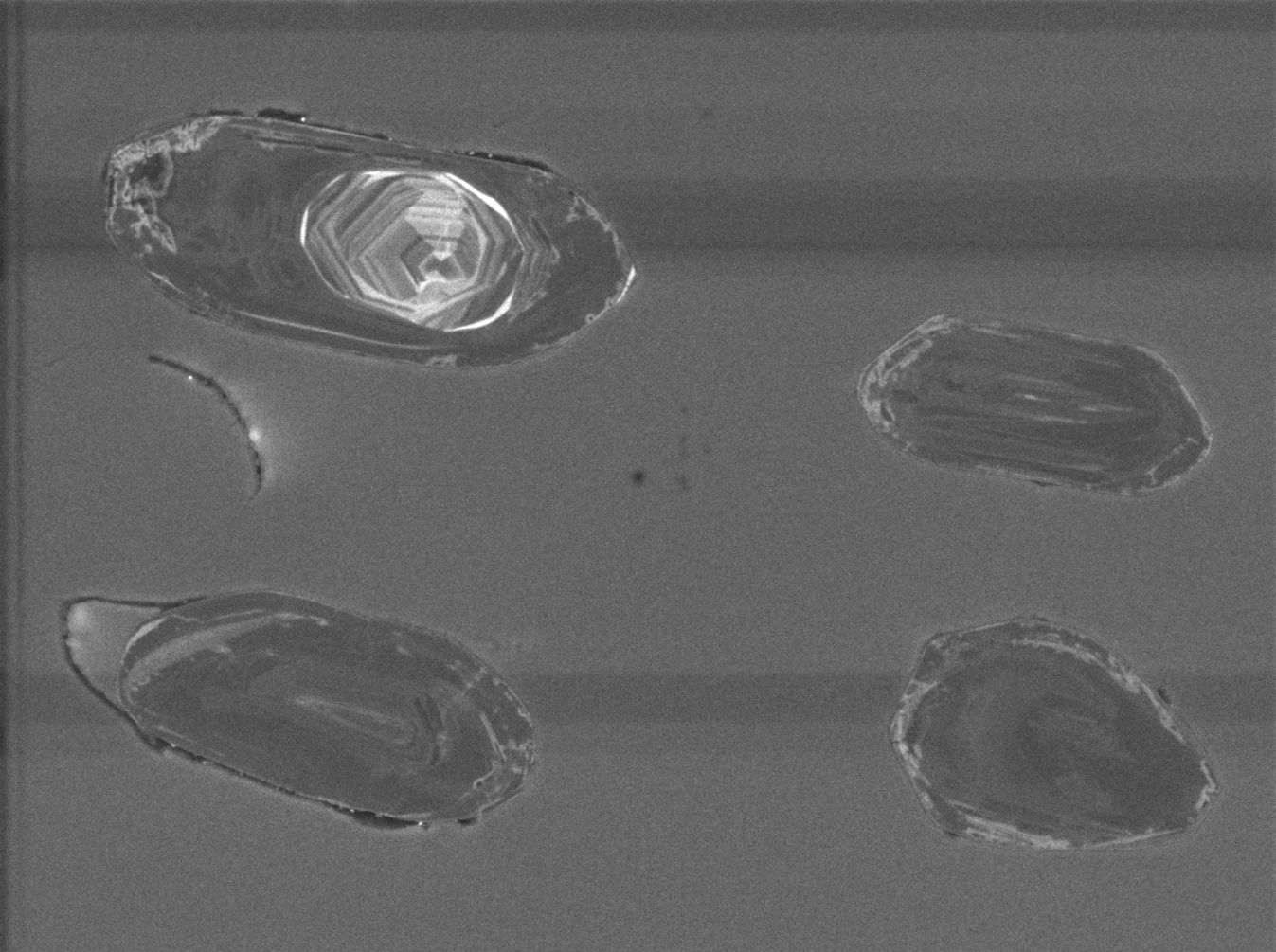


103



104

100µm



SEM HV: 10.0 kV

WD: 17.02 mm

View field: 356  $\mu\text{m}$

SEM MAG: 777 x

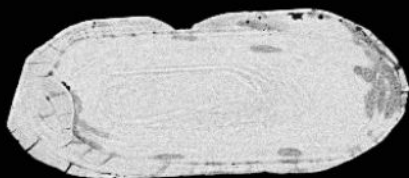
100  $\mu\text{m}$

MIRA3 TESCAN

12627-23-cl

Det: CL

NRCan LMS GSC



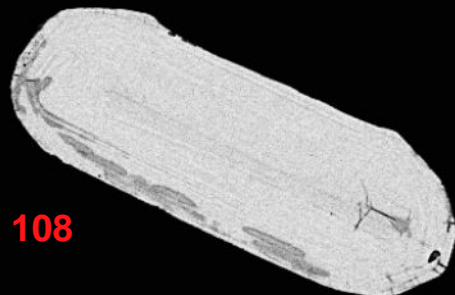
105



106

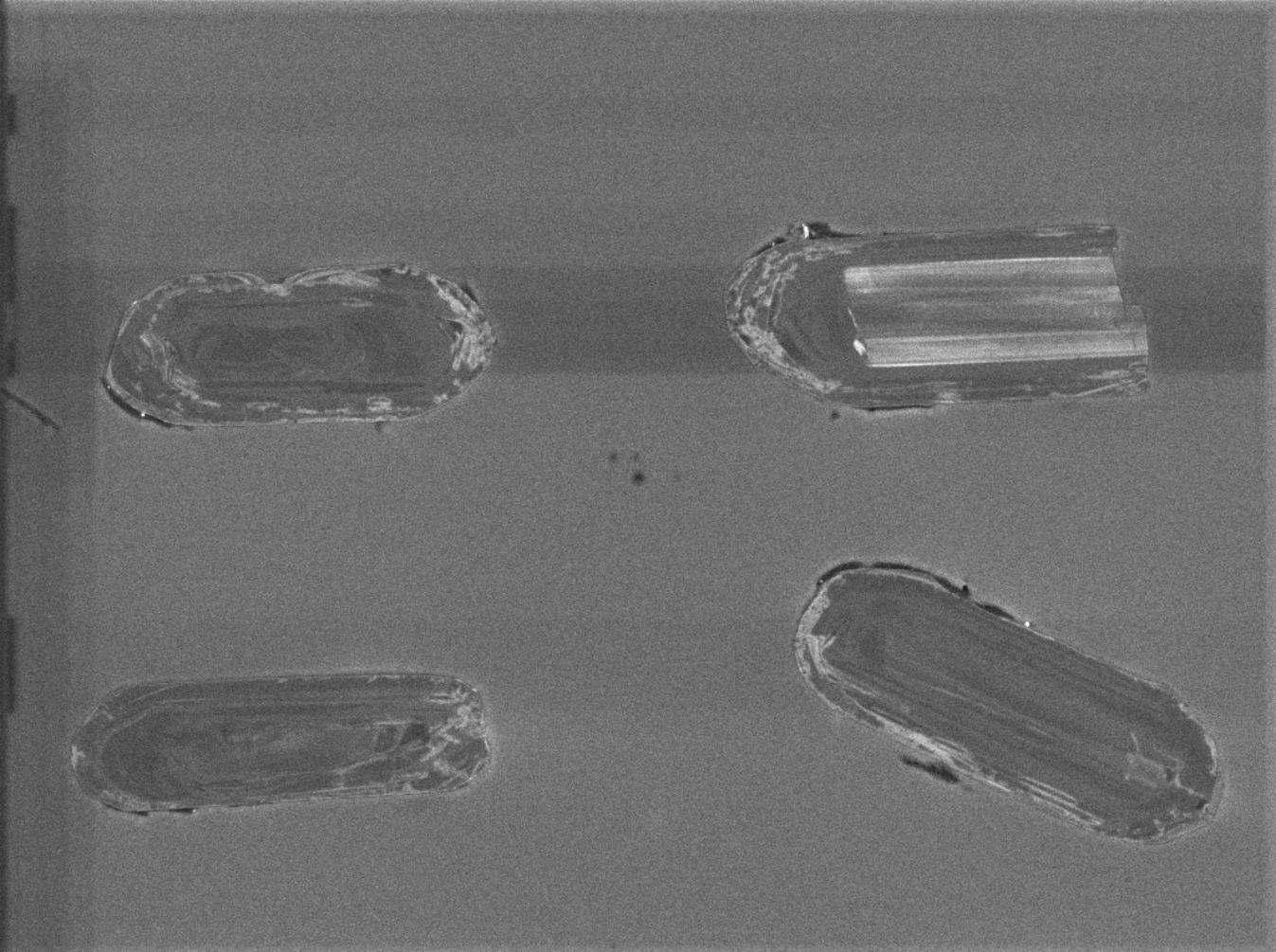


107



108

100µm



SEM HV: 10.0 kV

WD: 17.02 mm

View field: 409  $\mu\text{m}$

SEM MAG: 676 x

100  $\mu\text{m}$

MIRA3 TESCAN

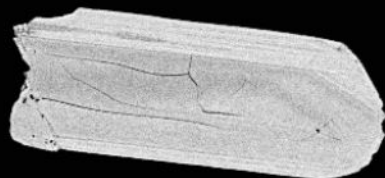
12627-24-cl

Det: CL

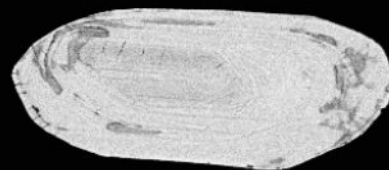
NRCan LMS GSC



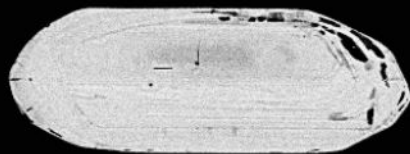




109



110

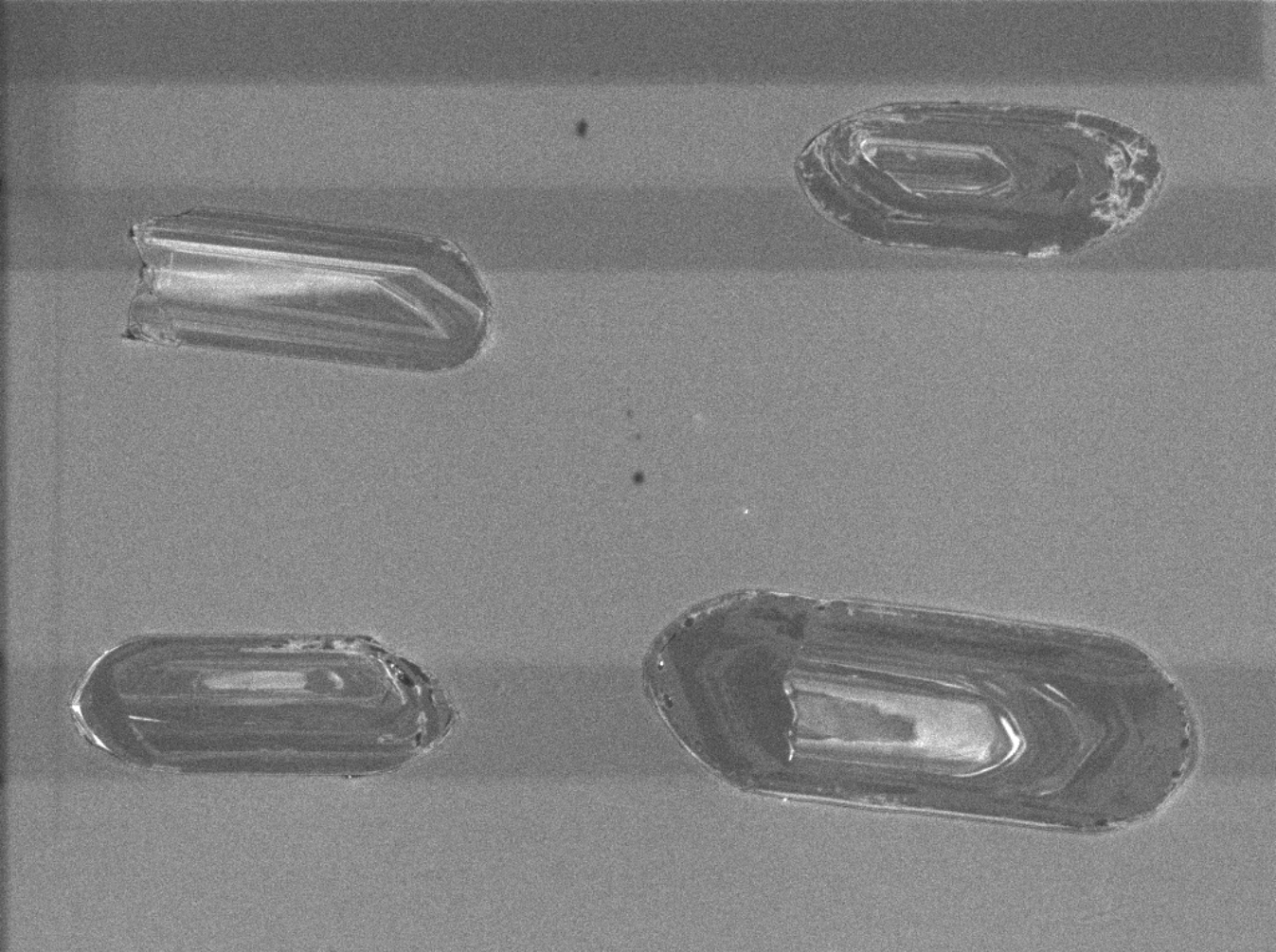


111



112

100µm



SEM HV: 10.0 kV

WD: 17.02 mm

View field: 409  $\mu\text{m}$

SEM MAG: 677 x

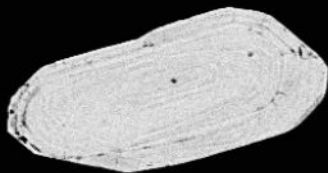
100  $\mu\text{m}$

MIRA3 TESCAN

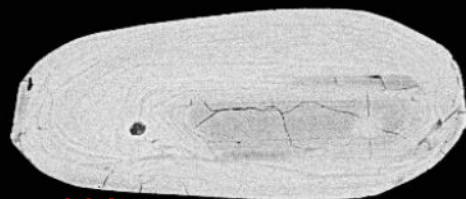
12627-25-cl

Det: CL

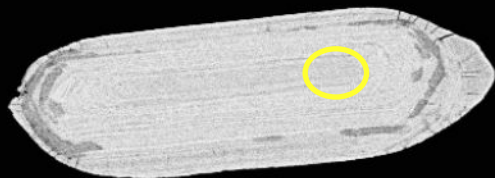
NRCan LMS GSC



**113**

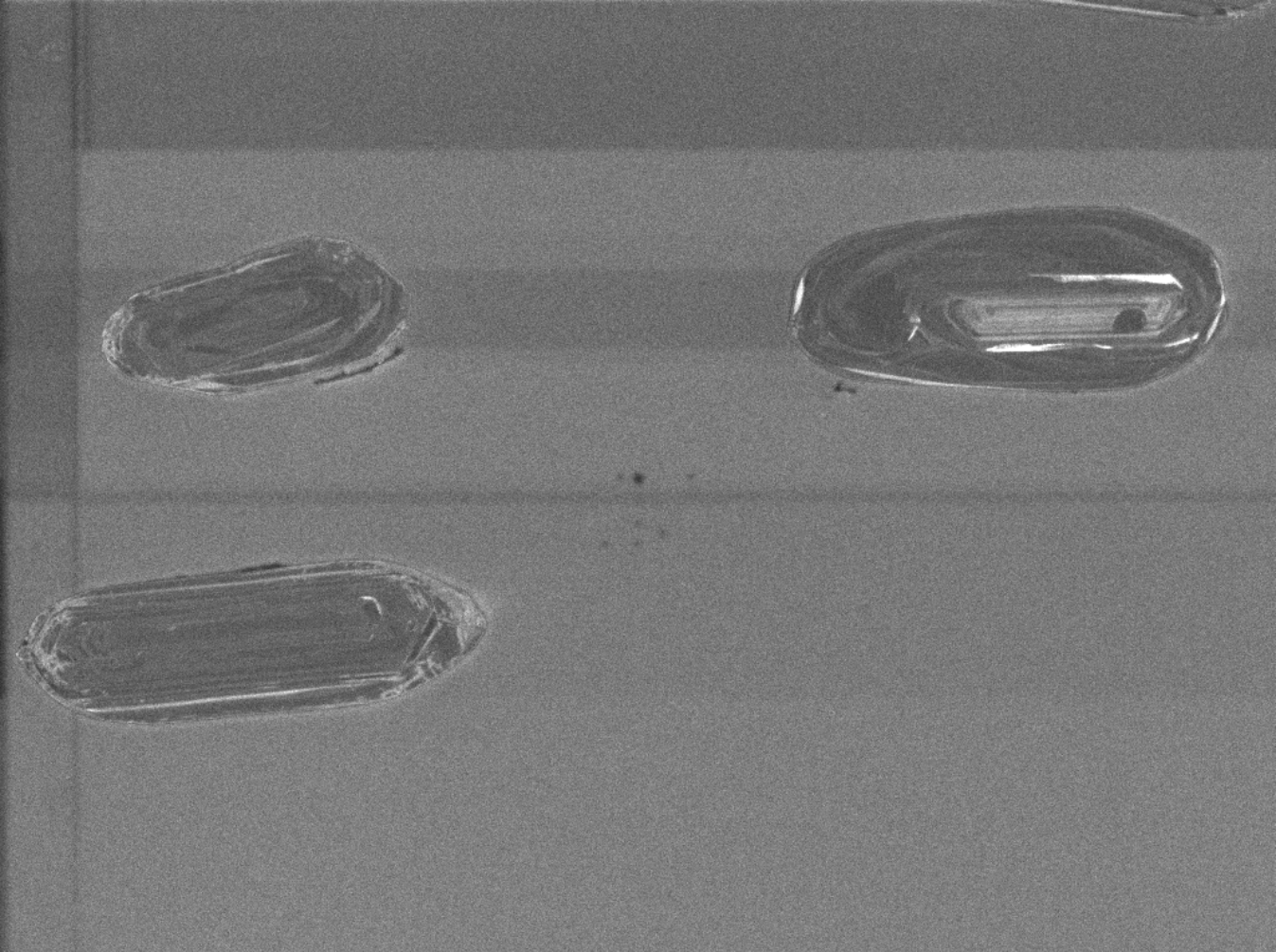


**114**



**115**

100μm



SEM HV: 10.0 kV

WD: 17.02 mm

View field: 397  $\mu\text{m}$

SEM MAG: 698 x



100  $\mu\text{m}$

MIRA3 TESCAN

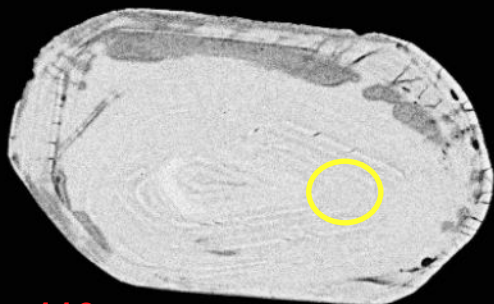
12627-26-cl

Det: CL

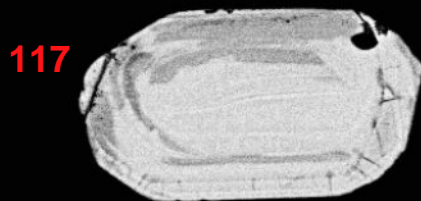
NRCan LMS GSC



12627-27-bse

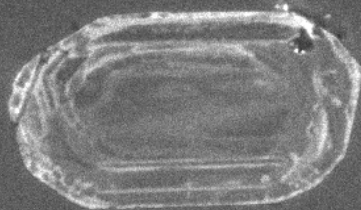
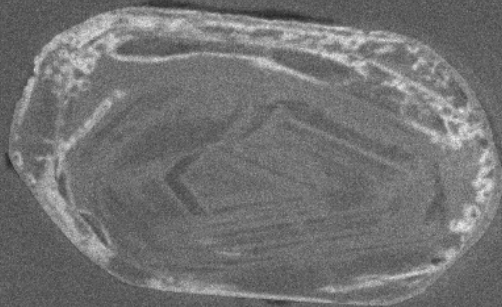


116



117

100μm



SEM HV: 10.0 kV

WD: 17.02 mm

View field: 278  $\mu\text{m}$

SEM MAG: 996 x

50  $\mu\text{m}$

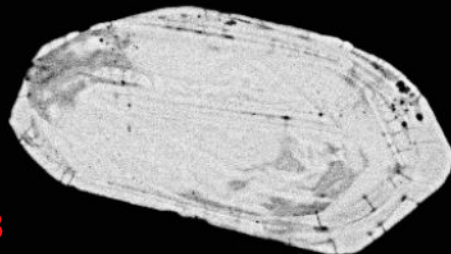
12627-27-cl

Det: CL

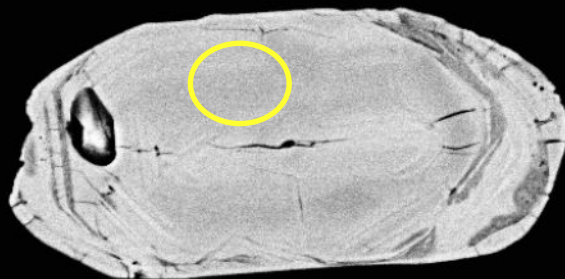
MIRA3 TESCAN

NRCan LMS GSC

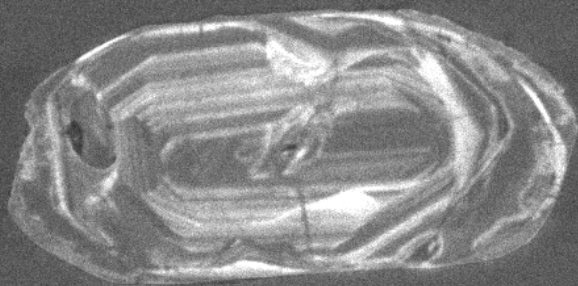
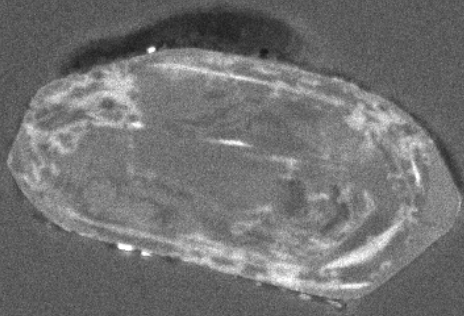
118



119



50μm



SEM HV: 10.0 kV

WD: 17.02 mm

View field: 219  $\mu\text{m}$

SEM MAG: 1.26 kx

50  $\mu\text{m}$

12627-28-cl

Det: CL

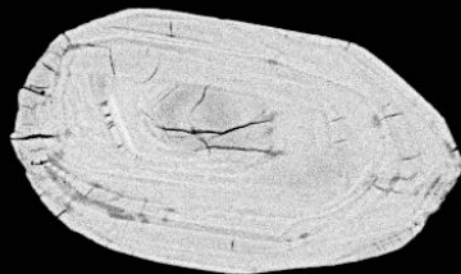
MIRA3 TESCAN

NRCan LMS GSC

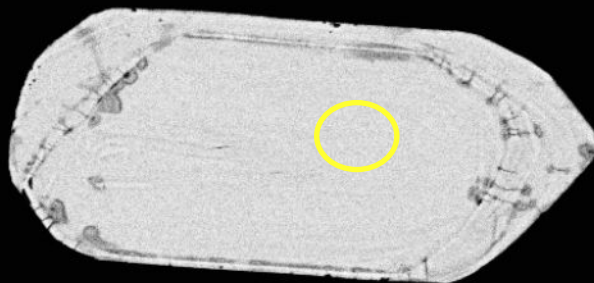


12627-29-bse

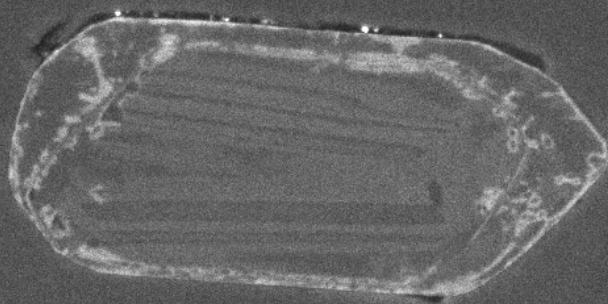
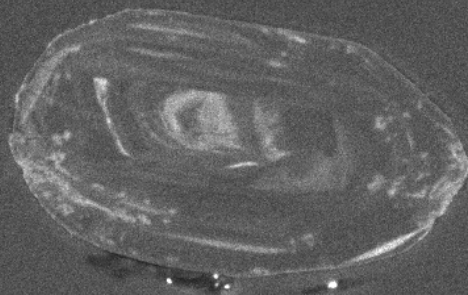
120



121



100µm



SEM HV: 10.0 kV

WD: 17.02 mm

View field: 267  $\mu\text{m}$

SEM MAG: 1.04 kx

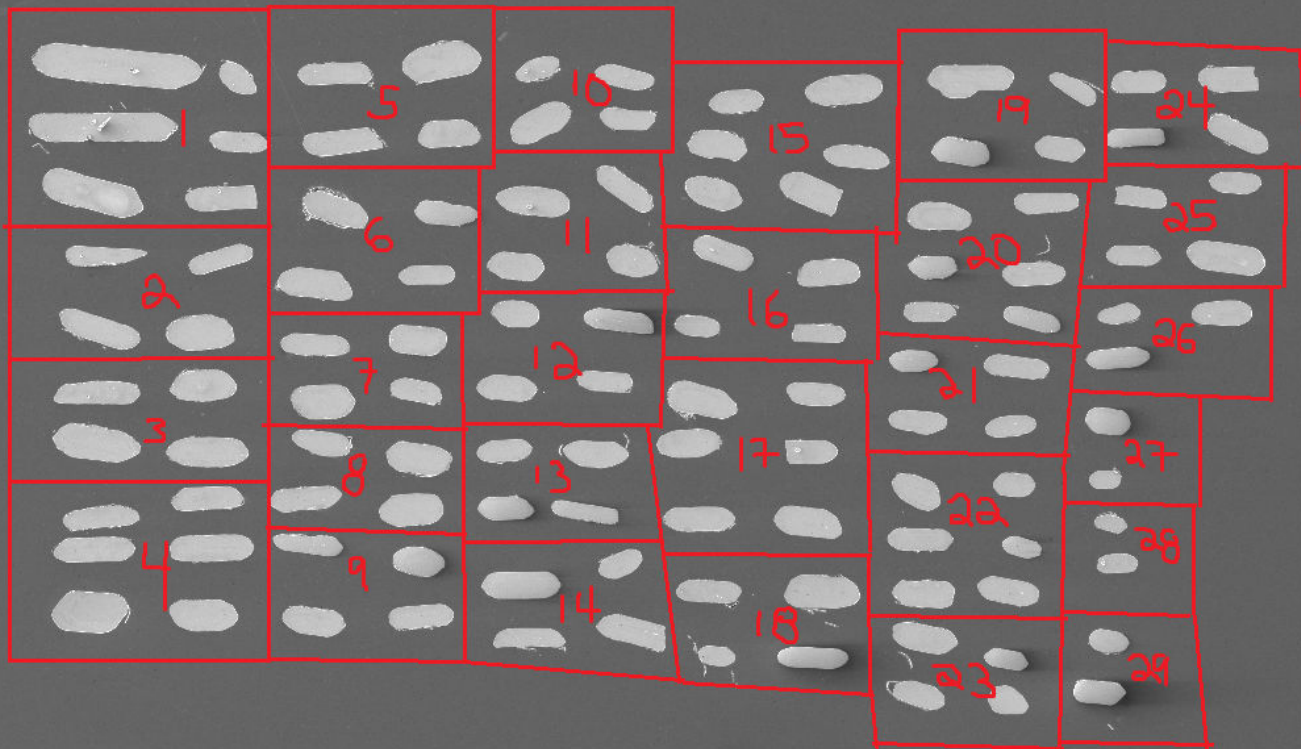
50  $\mu\text{m}$

12627-29-cl

Det: CL

MIRA3 TESCAN

NRCan LMS GSC



SEM HV: 10.0 kV

WD: 75.91 mm

View field: 3.07 mm

SEM MAG: 90 x

12627-map

Det: SE

500  $\mu$ m

MIRA3 TESCAN

NRCan LMS GSC