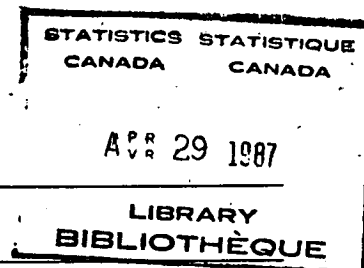


The Daily

Statistics Canada

Wednesday, April 29, 1987



Major Releases

- | | |
|-----------------------------------------------------------------------------------------------------------------------------------------------------------------------------------------------------------------|---|
| Census of Agriculture, 1986 | 2 |
| <ul style="list-style-type: none"> 1986 Census shows decline in farm numbers. | |
| Unemployment Insurance Statistics, February 1987 | 5 |
| <ul style="list-style-type: none"> On a seasonally adjusted basis, the number of beneficiaries receiving regular unemployment insurance benefits remained virtually unchanged from January 1987. | |
| Employment, Earnings and Hours, February 1987 | 8 |
| <ul style="list-style-type: none"> Average weekly earnings for all employees were estimated at \$439.16, up 2.5% from a year earlier. | |

Data Availability Announcements

- | | |
|-----------------------------------------------|----|
| Electric Power Statistics, February 1987 | 12 |
| Steel Ingots, Week Ending April 25, 1987 | 12 |
| Decorative Laminate Sheet, First Quarter 1987 | 12 |

Publications Released

13



Statistics Canada
Statistique Canada

Canada

Major Releases

Census of Agriculture 1986

Initial results from the 1986 Census of Agriculture indicate a 7.9% decline in the number of Canadian farms since the last Census in 1981.

There were 293,089 farms enumerated in 1986, down from 318,361 farms in 1981. No province registered an increase in the number of farms. The declines were not the same in every province. They ranged from 15.1% in Nova Scotia to 0.5% in Alberta.

The average farm size increased to 572 acres in 1986, from 528 acres in 1981 (an increase of over 8%). On average, the largest farms were found in Saskatchewan (1,036 acres per farm), while the smallest farms were found in Newfoundland (139 acres per farm).

Complete national and provincial results will be released on June 3, 1987. Sub-provincial data and cross-classifications by type of farm, level of sales, etc. will be available on June 26, 1987.

(see table on pages 3 and 4)

For further information, contact: Mel Jones, Census of Agriculture (613-990-8712), or Kathy Kennedy, Communications Division, (613-990-8293).

Number and Area of Census-farms
Canada and Provinces 1976 - 1986

	Nfld.	P.E.I.	N.S.	N.B.	Que.	Ont.
Number of Census-farms						
1976 ¹	878	3,677	5,434	4,551	51,587	88,801
1981	679	3,154	5,045	4,063	48,144	82,448
1986	651	2,833	4,283	3,554	41,448	72,713
Percentage Change						
'76/81	-22.7%	-14.2%	-7.2%	-10.7%	-6.7%	-7.2%
'81/86	-4.1%	-10.2%	-15.1%	-12.5%	-13.9%	-11.8%
Total Area of Census-farms (acres)						
published 1976 ¹	80,058	731,035	1,218,953	1,153,438	9,906,319	15,473,011
published 1981	82,667	699,367	1,151,567	1,082,045	9,338,532	14,923,280
suggested 1981 ²	82,667	699,367	1,151,567	1,082,045	9,338,532	14,923,280
published 1986 ³	90,345	673,196	1,029,211	1,010,396	8,991,673	13,953,009
Total Area of Census-farms (Hectares)						
published 1976 ¹	32,398	295,839	493,293	466,780	4,008,945	6,261,705
published 1981	33,454	283,024	466,023	437,888	3,779,169	6,039,237
suggested 1981 ²	33,454	283,024	466,023	437,888	3,779,169	6,039,237
published 1986 ³	36,561	272,433	416,507	408,893	3,638,801	5,646,582
Percentage Change						
'76/81 ⁴	3.3%	-4.3%	-5.5%	-6.2%	-5.7%	-3.6%
'81/86 ⁴	9.3%	-3.7%	-10.6%	-6.6%	-3.7%	-6.5%
Average Acres Per Census-farm						
1976 ¹	91	199	224	253	192	174
1981 ²	122	222	228	266	194	181
1986	139	238	240	284	217	192
Average Hectares Per Census-farm						
1976 ¹	37	80	91	103	78	71
1981 ²	49	90	92	108	78	73
1986	56	96	97	115	88	78
Percentage Change						
'76/81 ⁴	33.5%	11.5%	1.8%	5.1%	1.0%	3.9%
'81/86 ⁴	14.0%	7.2%	5.3%	6.8%	11.8%	6.0%

See footnote(s) at end of table.

Number and Area of Census-farms – Concluded
Canada and Provinces 1976 – 1986

	Man.	Sask.	Alta.	B.C.	Canada
Number of Census-farms					
1976 ¹	32,104	70,958	61,130	19,432	338,578
1981	29,442	67,318	58,056	20,012	318,361
1986	27,336	63,431	57,777	19,063	293,089
Percentage Change					
'76/81	-8.3%	-5.1%	-5.0%	3.0%	-6.0%
'81/86	-7.2%	-5.8%	-5%	-4.7%	-7.9%
Total Area of Census-farms (acres)					
published 1976 ¹	19,026,255	65,511,431	49,928,771	6,052,910	169,086,823
published 1981	18,819,365	64,116,652	47,218,170	5,383,428	162,815,073
suggested 1981 ²	19,115,000	65,564,000	49,932,000	6,097,000	167,985,458
published 1986 ³	19,126,517	65,728,443	51,040,463	5,957,860	167,601,113
Total Area of Census-farms (Hectares)					
published 1976 ¹	7,699,651	26,511,533	20,205,455	2,449,525	68,427,002
published 1981	7,615,926	25,947,086	19,108,513	2,178,596	65,888,916
suggested 1981 ²	7,736,000	26,533,000	20,207,000	2,467,000	67,981,795
published 1986 ³	7,740,226	26,599,354	20,655,340	2,411,060	67,825,757
Percentage Change					
'76/81 ⁴	.5%	.1%	.0%	.7%	-.7%
'81/86 ⁴	.1%	.3%	2.2%	-2.3%	-.2%
Average Acres Per Census-farm					
1976 ¹	593	923	817	311	499
1981 ²	649	974	860	305	528
1986	700	1036	883	313	572
Average Hectares Per Census-farm					
1976 ¹	240	374	331	126	202
1981 ²	263	394	348	123	214
1986	283	419	358	126	231
Percentage Change					
'76/81 ⁴	9.6%	5.5%	5.3%	-2.2%	5.7%
'81/86 ⁴	7.8%	6.4%	2.7%	2.6%	8.4%

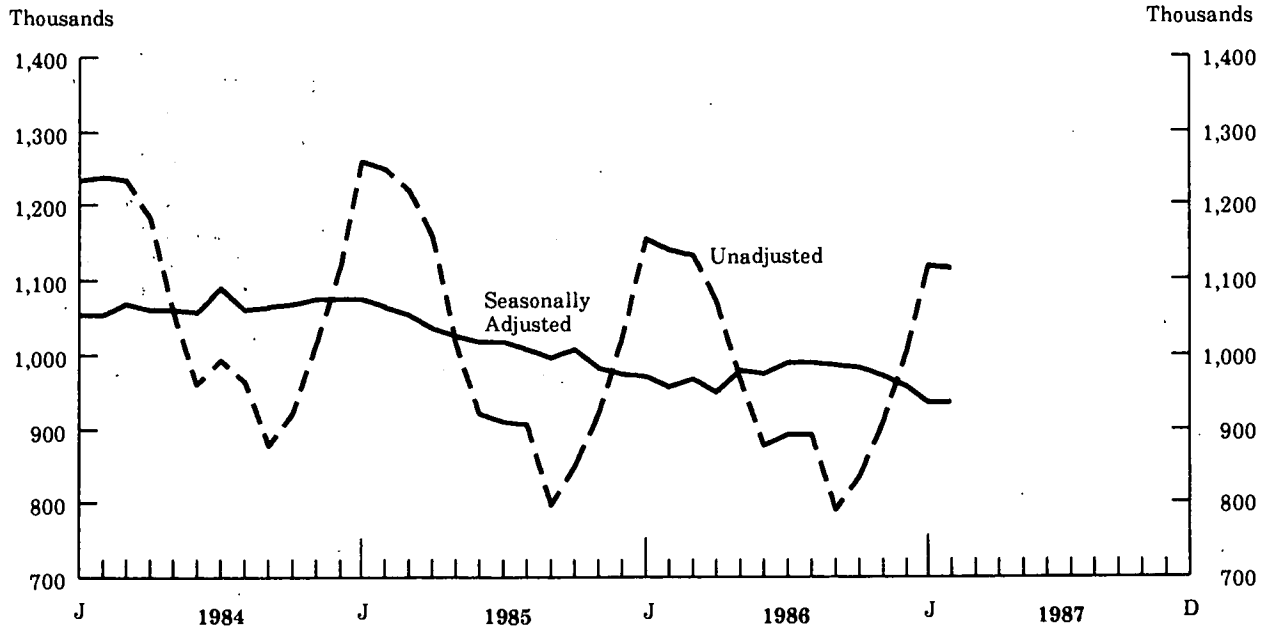
¹ The 1976 Canada totals include 26 census-farms and 4642 acres (1878 hectares) for the Northwest Territories and the Yukon.

² In 1981, unimproved land was underreported in the western provinces. This problem was not encountered in 1986. Therefore, direct comparisons of the published estimates for 1986 and 1981 are not valid. For this reason the 1986 data have been compared to the "1981 suggested" values which were released in a cautionary note to users subsequent to the 1981 census.

³ The 1986 Census also identified 7.1 million acres (2.9 million hectares) of grazing (permit) lands in British Columbia. This land was excluded from total area of census-farms in order to maintain historical continuity.

⁴ Percentage changes were calculated using the "1981 suggested" area data. The percentage change for average farm size was calculated from the area per farm data before it was rounded to the nearest acre/hectare.

Number of Beneficiaries Receiving Regular Benefits, Canada, 1984-1987



Unemployment Insurance Statistics February 1987

Seasonally Adjusted Data¹ - Beneficiaries Receiving Regular Benefits

- For the week ending February 21, 1987, preliminary seasonally-adjusted estimates show that the number of beneficiaries² receiving regular unemployment insurance benefits totalled 933,000, virtually unchanged from the preceding month. The number of regular beneficiaries has generally been declining since February 1985, when it stood at 1,065,000.
- By province, the seasonally-adjusted number of beneficiaries receiving regular benefits decreased between January and

February 1987 in Ontario (-3.1%), in the Northwest Territories (-2.8%), and in Saskatchewan (-1.8%). Increases occurred in Nova Scotia (2.2%), and in Newfoundland (-1.6%). The remaining provinces showed little or no change.

(continued on page 6)

¹ The seasonally adjusted data are revised annually when final data for a complete calendar year become available. The revisions published this month have been marginal, that is, they did not exceed one percentage point.

² The number of beneficiaries represents a count of persons who qualified for unemployment insurance benefits during a specific week of the reference month.

Data Not Adjusted for Seasonal Variations

- On an unadjusted basis the total number of beneficiaries (including all persons qualifying for regular or special unemployment insurance benefits) stood at 1,257,000 in February 1987, a decrease of 1.8% from February 1986. The number of male beneficiaries decreased to 762,000 or by 1.7% over the same period while the number of female beneficiaries declined by 2.0% to 496,000.
- Not adjusted for seasonal variations, benefits paid during February 1987 totalled \$1,002 million³, increasing by 4.8% from February 1986. For the first two months of 1987, disbursements amounted to \$2,052 million, 3.3% less than was paid out during the same period last year. The year-to-date change resulted from an 8.9% decrease in the number of benefit weeks (to 10.7 million from 11.7 million) which was partially offset by a 6.1% increase in the average weekly benefit (to \$191.79 from \$180.73).
- The number of claims (applications) received³ for unemployment insurance benefits in February 1987 totalled 220,000 (not adjusted for seasonal variations), up slightly (1.9%) from February 1986. For January and February, the total number of claims received was 538,000, a decrease of 9.6% compared to the same period in 1986.

³ *Benefits paid, number of benefit weeks, and number of claims received relate to a complete calendar month. It should be noted that these data are affected by the number of working days available during the reference month to process claims and to pay benefits. In making short-term comparisons it is not uncommon to observe different trends between these data and the number of beneficiaries.*

Available on CANSIM: matrices 26 (series 1.6) and 5700-5717.

(see table on page 7)

Data for the months of December 1986, January and February 1987 will be published in the February 1987 issue of *Unemployment Insurance Statistics* (73-001, \$12/\$120), available at the beginning of May 1987. Unpublished beneficiaries data are also available on request, including statistics for small areas as defined by data users. For special tabulations and further information contact H. Stiebert (613-991-4044), or J.-P. Maynard (613-991-4045) Labour Division.

Unemployment Insurance Statistics

	February 1987	January 1987	December 1986	February 1986	% change from	
					January 1987	February 1986
Benefits						
Amount paid (\$'000)	1,002,135	1,049,946	979,215	956,430	-4.6	4.8
Weeks of benefit ('000)	5,192	5,508	5,191	5,291	-5.7	-1.9
Average weekly benefit (\$)	193.03	190.62	188.65	180.78	1.3	6.8
Claims received ('000)	220	318	358	216	-30.7	1.9
Beneficiaries¹ ('000)						
Total	1,257 ^p	1,248 ^p	1,144 ^r	1,281 ^r	0.7	-1.8
Regular benefits	1,116 ^p	1,119 ^p	1,003 ^r	1,141 ^r	-0.3	-2.1
Regular benefits - Seasonally adjusted	933 ^p	935 ^p	956 ^r	957 ^r	-0.2	
					January to February 1987	1986
					% change 1987/1986	
Benefits						
Amount paid (\$'000)		2,052,081	2,122,649			-3.3
Weeks of benefit ('000)		10,700	11,745			-8.9
Average weekly benefit (\$)		191.79	180.73			6.1
Claims received ('000)		538	596			-9.6
Beneficiaries - Year-to-date average¹ ('000)		1,253 ^p	1,283 ^r			-2.4

¹ The beneficiaries include all claimants who receive benefits through the computer pay system. Excluded are year-round fishermen, a few seasonal fishermen and a small number of work sharing and job creation claimants who are paid through the manual pay system.

^p Preliminary figures.

^r Revised figures.

Employment, Earnings and Hours

February 1987

(data not seasonally adjusted)

Preliminary data for February 1987 showed an estimated 9,461,000 employees at the Canada industrial aggregate level¹, an increase of 182,000 (+2.0%) from the previous month (not adjusted for seasonal variation). Most of this increase, however, was due to the introduction of the improved sampling frame (see accompanying note), leaving underlying employment levels essentially unchanged from the previous month.

Average weekly earnings for all employees were estimated at \$439.16 for February, little changed from January and 2.5% above the level of February 1986 (not adjusted for inflation).

Employment

Estimated employment in February in the goods-producing industries was 2.1% higher than in January. Although larger than usual for this time of year, this increase was due mainly to higher estimated employment as a result of the introduction of the sampling frame changes. The number of employees in the service-producing industries increased by 1.9% between January and February which was also due primarily to the effects of the sampling frame modifications.

The total number of employees at the Canada industrial aggregate level increased by an estimated 571,000 (+6.4%) from February 1986. It is estimated that about two-thirds of this increase was due to the cumulative impact of changes made to the sampling frame in January and February 1987. The year-to-year growth rates in the goods-producing industries and services-producing industries were both higher than in the previous months.

¹ The industrial aggregate is the sum of all industries with the exception of agriculture; fishing and trapping; religious organizations; private households and military personnel.

Note to Users

Several important changes to the Survey of Employment, Payrolls and Hours sampling frame continue to be phased-in over a four-month period which began with the reference month of January 1987. Major changes include improvements to the coverage of firms in the survey sample frame and a re-assignment of some establishments to more appropriate industry, geographic and/or employment size categories. These changes were designed to improve the accuracy and reliability of the estimates and were expected to result in higher estimates of employment.

For February, the introduction of these changes has resulted in an increase in the preliminary estimate of employment of about 2.0%, bringing the cumulative increase for January and February to approximately 4.3%. The increases were primarily concentrated in manufacturing, construction, trade, finance, insurance, and real estate, and community, business and personal services. Most of the provincial and territorial estimates of employment were also higher. It is estimated that the sampling frame adjustments have had little impact on average weekly earnings.

More detailed information on the impact of these changes for February will be available in late May when the revised estimates for February will be published. Users requiring more information should contact the Labour Division at (613) 991-4090.

Employment estimates in all provinces were affected by changes made to the sampling frame in February 1987. Estimated employment was higher than usual for this time of year in Prince Edward Island, New Brunswick, Quebec, Ontario, Saskatchewan, Alberta and British Columbia. Employment in Newfoundland decreased slightly at a time of year when an increase is usually observed. The year-to-year growth rates in February were higher than in recent months in all provinces except Newfoundland and Manitoba.

(continued on page 9)

Earnings

Average weekly earnings for all employees in the goods-producing industries increased more than usual between January and February due primarily to larger than usual increases in manufacturing and construction. In the service-producing industries, average weekly earnings remained virtually unchanged between January and February. Average weekly earnings in finance, insurance and real estate increased at a time of year when a decrease is usually observed.

Compared to February 1986, total average weekly earnings increased by \$10.66, bringing the yearly growth rate to 2.5%. Average weekly earnings in the goods-producing industries rose by 3.1% from a year earlier while they increased by 2.3% in the service-producing industries. Year-to-year growth rates were higher than in the past few months in forestry, construction, transportation, communication and other utilities, and finance, insurance and real estate.

At the provincial level, average weekly earnings in Nova Scotia and British Columbia increased between January and February at a time of year when little change or a decrease is usually observed. In Prince Edward Island, average weekly earnings decreased when an increase is usually observed. The yearly rate of change in average weekly earnings in British Columbia was the highest it has been since April 1986 while New Brunswick had the lowest year-to-year growth rate observed since the introduction of the Survey of Employment, Payrolls and Hours in March 1983.

Hours and Hourly Earnings

At the Canada industrial aggregate level, the average weekly hours for full-time and part-time employees paid by the hour (who account for approximately 47% of industrial aggregate employment) were estimated at 31.5 hours in February 1987, little changed from the previous month. Average weekly hours were estimated at 38.6 hours in the goods-producing industries and 27.8 hours in the service-producing industries.

Average hourly earnings of employees paid by the hour, estimated at \$11.02 in February 1987, remained virtually unchanged from January 1987. Average hourly earnings in February were estimated at \$12.98 in the goods-producing industries and \$9.61 in the service-producing industries.

(see tables on pages 10 and 11)

Available on CANSIM: matrices 8003-9000, 9584-9638.

Order the February 1987 issue of *Employment, Earnings and Hours* (72-002, \$35/\$350), available at the end of May. Contact: R. Arsenault (613-991-4090), Labour Division.

Employment, Earnings and Hours

February 1987

(data not seasonally adjusted)

Industry group - Canada (1970 SIC)	All employees					
	Number			Average weekly earnings		
	Feb. 1987 ^p	Jan. 1987 ^r	Dec. 1986 ^r	Feb. 1987 ^p	Jan. 1987 ^r	Dec. 1986 ^r
	thousands			dollars		
Forestry	52.1	50.6	46.6	644.00	615.17	570.22
Mines, quarries and oil wells	145.2	142.2	140.3	719.85	723.89	714.25
Manufacturing	1,793.1	1,757.5	1,711.3	523.04	518.58	509.33
Durables	858.3	836.7	825.4	556.97	554.53	537.87
Non-durables	934.9	920.8	885.8	491.88	485.93	482.74
Construction	357.5	349.3	365.7	526.71	516.70	499.96
Building	303.2	294.8	310.4	510.14	497.29	481.73
Industrial and heavy	54.3	54.4	55.3	619.32	621.86	602.29
Goods-producing industries	2,348.0	2,299.5	2,263.8	538.46	533.11	521.77
Transportation, communication and other utilities	788.8	770.2	781.5	579.20	579.93	566.17
Transportation	439.5	424.2	434.8	531.81	533.33	520.69
Storage	12.5	12.5	12.1	549.16	542.20	540.64
Communication	222.1	219.8	221.8	607.46	604.90	588.28
Electric power, gas and water utilities	114.7	113.7	112.8	709.39	709.61	700.74
Trade	1,742.9	1,727.4	1,764.2	319.95	322.20	321.93
Wholesale	509.9	503.3	499.3	456.19	454.52	436.37
Retail	1,233.0	1,224.1	1,265.0	263.61	267.81	276.76
Finance, insurance and real estate	597.4	596.7	586.1	464.88	453.22	456.77
Community, business and personal services	3,334.1	3,238.9	3,153.3	367.78	369.32	372.56
Public administration	649.5	645.6	646.9	572.83	570.44	570.81
Service-producing industries	7,112.6	6,978.8	6,932.1	406.38	406.68	407.12
Industrial aggregate	9,460.6	9,278.3	9,195.9	439.16	438.01	435.35
Industrial aggregate - Provinces						
Newfoundland	124.2	124.3	118.2	421.64	422.66	424.09
Prince Edward Island	29.7	29.0	29.9	370.13	371.96	366.05
Nova Scotia	262.3	260.9	258.6	398.15	395.42	395.09
New Brunswick	194.8	188.1	190.0	407.75	410.11	410.03
Quebec	2,327.0	2,285.2	2,261.8	426.95	426.48	425.26
Ontario	3,974.2	3,887.5	3,851.9	451.45	448.73	443.62
Manitoba	364.3	365.9	365.4	406.05	405.46	405.91
Saskatchewan	281.4	275.3	274.1	404.41	408.75	410.56
Alberta	870.9	846.1	848.4	447.27	452.35	451.95
British Columbia	1,005.7	990.6	971.7	450.96	447.25	445.18
Yukon	8.5	8.5	8.5	525.26	529.02	525.66
Northwest Territories	17.6	17.1	17.4	601.07	600.33	590.23
Canada	9,460.6	9,278.3	9,195.9	439.16	438.01	435.35

^p preliminary estimates.

^r revised estimates.

Employment, Earnings and Hours – Concluded

February 1987

(data not seasonally adjusted)

Industry group – Canada (1970 SIC)	Employees paid by the hour					
	Average weekly hours			Average hourly earnings		
	Feb. 1987 ^p	Jan. 1987 ^r	Dec. 1986 ^r	Feb. 1987 ^p	Jan. 1987 ^r	Dec. 1986 ^r
	number			dollars		
Forestry	41.5	40.4	36.0	16.80	16.76	16.36
Mines, quarries and oil wells	39.5	39.9	39.4	16.13	16.07	16.19
Manufacturing	38.9	38.7	37.9	12.31	12.25	12.28
Durables	40.1	40.0	38.9	12.91	12.85	12.77
Non-durables	37.6	37.4	36.8	11.65	11.59	11.73
Construction	36.8	37.0	36.0	14.95	14.58	14.33
Building	36.4	36.6	35.5	14.77	14.31	14.08
Industrial and heavy	39.0	39.0	38.5	15.95	16.04	15.70
Goods-producing industries	38.6	38.5	37.6	12.98	12.88	12.88
Transportation, communication and other utilities	37.9	38.3	38.4	13.92	13.96	14.17
Transportation	37.4	38.0	38.1	13.13	13.13	13.57
Storage	37.8	36.9	37.2	14.07	14.09	14.41
Communication	36.8	36.7	36.7	14.50	14.56	14.47
Electric power, gas and water utilities	40.5	40.6	41.2	16.26	16.36	16.39
Trade	27.6	28.5	29.4	8.51	8.36	8.35
Wholesale	35.2	35.8	34.7	10.13	10.03	9.88
Retail	26.0	26.9	28.4	8.07	7.91	7.97
Finance, insurance and real estate
Community, business and personal services	26.3	26.4	26.6	9.36	9.31	9.36
Public administration
Service-producing industries	27.8	28.1	28.7	9.61	9.52	9.62
Industrial aggregate	31.5	31.7	31.7	11.02	10.92	10.91
Industrial aggregate – Provinces						
Newfoundland	34.9	35.5	34.5	9.69	9.71	9.69
Prince Edward Island	30.6	30.9	30.9	7.71	7.67	7.66
Nova Scotia	32.0	31.8	32.2	9.63	9.58	9.55
New Brunswick	33.2	33.3	33.6	9.79	9.90	9.92
Quebec	32.4	32.6	32.7	10.67	10.60	10.63
Ontario	32.0	32.1	31.9	11.19	11.04	10.99
Manitoba	30.6	30.8	31.5	9.92	9.89	9.99
Saskatchewan	27.6	28.4	28.9	10.43	10.36	10.42
Alberta	29.5	30.1	30.3	10.81	10.82	10.87
British Columbia	29.6	29.9	29.8	12.59	12.42	12.50
Yukon	32.1	32.8	33.1	12.93	13.01	12.14
Northwest Territories	32.1	33.1	31.7	14.04	13.89	13.55
Canada	31.5	31.7	31.7	11.02	10.92	10.91

^p preliminary estimates.

^r revised estimates.

... figures not appropriate or not applicable.

Data Availability Announcements

Electric Power Statistics

February 1987

Highlights

Net generation of electric energy in Canada in February 1987 increased to 43 447 gigawatt hours (gwh), up 5.1% from the corresponding month last year. Exports increased 39.7% to 4 213 gwh, while imports decreased from 397 gwh to 130 gwh.

Year-to-date figures show net generation at 90 423 gwh, up 4.2% over the previous year's period. Exports at 8 114 gwh were up 20.8%, and imports at 388 gwh were down 31.9%.

Available on CANSIM: matrices 3987 to 3999.

Order the February 1987 issue of *Electric Power Statistics* (57-001, \$8/\$80), available the second week in May. Contact: Dave Madsen (613-991-3565), Energy Section, Industry Division.

Factory Shipments of High Pressure Decorative Laminate Sheet

First Quarter 1987

For the quarter ending March 31, 1987, domestic shipments of high pressure decorative laminate sheet, of 3.175 millimetres thickness and less, totalled 2 113 969 square metres for a value of \$15,758,208. In the same quarter of the previous year, shipments amounted to 1 837 357 square metres for a value of \$13,364,617.

Available on CANSIM: matrix 2906.

For further information, order the first quarter 1987 issue of *Factory Shipments of High Pressure Decorative Laminate Sheet*, (47-005, \$3/\$12) to be released the week of May 4. Contact: Raj Sehdev (613-991-3513), Industry Division.

Steel Ingots

Week Ended April 25, 1987

Preliminary estimates indicate that Canadian steel ingot production for the week ending April 25, 1987 totalled 293 073 tonnes, a decrease of 2.2% from the preceding week's total of 299 681 tonnes but up 0.6% from the year-earlier level of 291 242 tonnes.

The cumulative total in 1987 was 4 799 213 tonnes, an increase of 4.2% from 4 603 730 tonnes for the same period in 1986.

Contact: Gerry Barrett (613-991-3515), Industry Division.

Publications Released

Current Economic Indicators, Vol. 3, No. 3,
April 1987. Catalogue number 13-005
(Canada: \$10/\$100; Other Countries:
\$11/\$110).

Pulpwood and Wood Residue Statistics,
February 1987. Catalogue number 25-001
(Canada: \$5/\$50; Other Countries: \$6/\$60).

**Fruit and Vegetable Preservation
Service Bulletin**, Vol. 15, No. 20 –
Pack of Processed Cauliflower, 1986.
Catalogue number 32-023
(Canada: \$6/\$100; Other Countries: \$7/\$110).

**Fruit and Vegetable Preservation
Service Bulletin**, Vol. 15, No. 22 – **Pack of
Processed Mushrooms**, 1986.
Catalogue number 32-023
(Canada: \$6/\$100; Other Countries: \$7/\$110).

Footwear Statistics, February 1987.
Catalogue number 33-002
(Canada: \$4/\$40; Other Countries: \$5/\$50).

Steel Wire and Specified Wire Products,
January 1987. Catalogue number 41-006
(Canada: \$4/\$40; Other Countries: \$5/\$50).

*Statistics Canada publications may be pur-
chased by mail order from Publication Sales,
Room 1710, Main Building, Statistics Canada,
Ottawa K1A 0T6 or phone 613-993-7276.*

*Please enclose cheque or money order payable to
the Receiver General for Canada/Publications
and provide full information on publications
required (catalogue number, title, issue).*

*Publications may also be ordered through
Statistics Canada's offices in St. John's,
Halifax, Montreal, Ottawa, Sturgeon Falls,
Toronto, Winnipeg, Regina, Edmonton and
Vancouver, or from authorized bookstore
agents or other booksellers.*

**The
Daily**

Statistics Canada's Official Release Bulletin for Statistical Information

Catalogue 11-001E. Price: Canada \$100/year; other countries \$125/year

Published by the Communications Division (Director – Tim Davis)
Statistics Canada, 3-O, R.H. Coats Bldg., Ottawa K1A 0T6.

Senior Editor: Greg Thomson (613-991-1103)

Editor: Deanna Jamieson (613-991-1198)

Published under the authority of the Minister of Supply and Services
Canada. Statistics Canada should be credited when reproducing or
quoting any part of this document.

STATISTICS CANADA LIBRARY
BIBLIOTHÈQUE STATISTIQUE CANADA



1010496549