

# The Daily

## Statistics Canada

Friday, March 10, 1989

**NOT FOR LOAN  
NE S'EMPRUNTE PAS**

MAR 10 1989

LIBRARY  
BIBLIOTHÈQUE

### Major Releases

<b>Labour Force Survey, February 1989</b>	2
• The rate of unemployment was 7.6, unchanged since December.	
<b>New Motor Vehicle Sales, January 1989</b>	4
• Sales of new motor vehicles decreased 5.2% from the year-earlier level.	
<b>Travel Between Canada and Other Countries, January 1989</b>	7
• For the fifth consecutive month, overnight trips to Canada by non-residents reached the highest monthly level since 1972.	

### Data Availability Announcements

Department Store Sales by Province and Metropolitan Area, January 1989	10
Pulpwood and Wood Residue Statistics, January 1989	10
Steel Wire and Specified Wire Products, January 1989	10
Electric Storage Batteries, January 1989	11
Steel Pipe and Tubing, January 1989	11
Electric Lamps, February 1989	11
Cement, January 1989	11
Milling Statistics, January 1989	11
Hospital Statistics, Preliminary Annual Report, 1987-88	11

<b>Publication Released</b>	12
-----------------------------	----

<b>Major Release Dates: March 13 - 17</b>	13
---	----

Statistics  
Canada Statistique  
Canada

Canada

## Major Releases

### Labour Force Survey

February 1989

#### Overview

Estimates from Statistics Canada's Labour Force Survey for February 1989 indicate that the rate of unemployment was 7.6, unchanged since December. Employment was down slightly (-28,000), following a sharp increase in January, while unemployment showed little change.

#### Employment

For the week ended February 18, 1989, the seasonally adjusted level of employment was estimated at 12,413,000, down 28,000 from January. The employment/population ratio decreased 0.1 to 62.0.

- The seasonally adjusted estimate of employment for young people aged 15 to 24 fell by 35,000, particularly among young women (-22,000). This decrease, which largely offset the increase recorded in January for 15 to 24 year olds, resulted in a 0.8 drop in the employment/population ratio for this age group.
- Employment among persons aged 25 and over was up slightly (+7,000), continuing the upward trend which began in August 1986.
- The seasonally adjusted estimate of part-time employment fell by 31,000 in February, while full-time employment continued to rise, edging up 13,000. The decline in part-time employment was observed among both men and women, while the increase in full-time employment was limited to men.
- Employment declined by 32,000 in the services sector and by 14,000 in public administration. Employment was up by 12,000 in construction, and by 11,000 in transportation, communications, and other utilities while there was little change in the other sectors.

- The estimated level of employment declined by 36,000 in Ontario following large gains posted the previous month. Seasonally adjusted employment also declined in Saskatchewan, while it rose by 23,000 in British Columbia. There was little or no change in the other provinces.

#### Unemployment and Participation Rate

The seasonally adjusted estimate of unemployment rose slightly (+5,000) in February 1989 to 1,022,000. The unemployment rate was unchanged at 7.6 for the third consecutive month, while the participation rate declined 0.1 to 67.1.

- Unemployment increased by 6,000 among women aged 25 and over.
- There was little change in the unemployment rate for the main age and sex categories. The rate for young people aged 15 to 24 was 11.6, while the rate for persons aged 25 and over was unchanged at 6.6.
- The slight decline in the participation rate was entirely attributable to young people aged 15 to 24. The rate for this group declined by 0.8.
- The estimated number of unemployed fell by 13,000 in Quebec and rose by 14,000 in Ontario, while there was little or no change in the other provinces.
- The unemployment rate increased by 1.2 in Prince Edward Island (13.1), by 0.6 in New Brunswick (12.4) and by 0.3 in Ontario (5.2). The rate also increased in Manitoba (7.6) and in Saskatchewan (7.9). In Nova Scotia, the unemployment rate declined for the fifth consecutive month, to 8.8. Unemployment was down slightly in Newfoundland (15.0), Quebec (9.1), Alberta (7.4) and British Columbia (9.9).

(continued on page 3.)

**Changes since February 1988  
(Unadjusted)**

- Estimated employment was 12,082,000, an increase of 229,000 (+1.9%).
- Full-time employment increased by 223,000 (+2.3%) to 10,088,000. Estimated part-time employment was virtually unchanged at 1,994,000 (+0.3%).
- Employment grew by 2.4% in the goods-producing industries, with the construction sector posting the largest increase (+7.9%). Decreases in finance, insurance and real estate (-2.5%) and in public administration (-2.7%) limited overall employment growth in the service-producing industries to 1.7%, in spite of a 3.5% advance in the services sector.

- The unemployment rate decreased by 0.2 to 8.3.
- The participation rate rose 0.3 to 65.8, while the employment/population ratio increased by 0.4 to 60.3.

Available on CANSIM: matrices 2074-2075, 2078-2099, 2101-2107 and table 00799999.

The February 1989 issue of *The Labour Force* (71-001, \$17/\$170) will be available the third week of March.

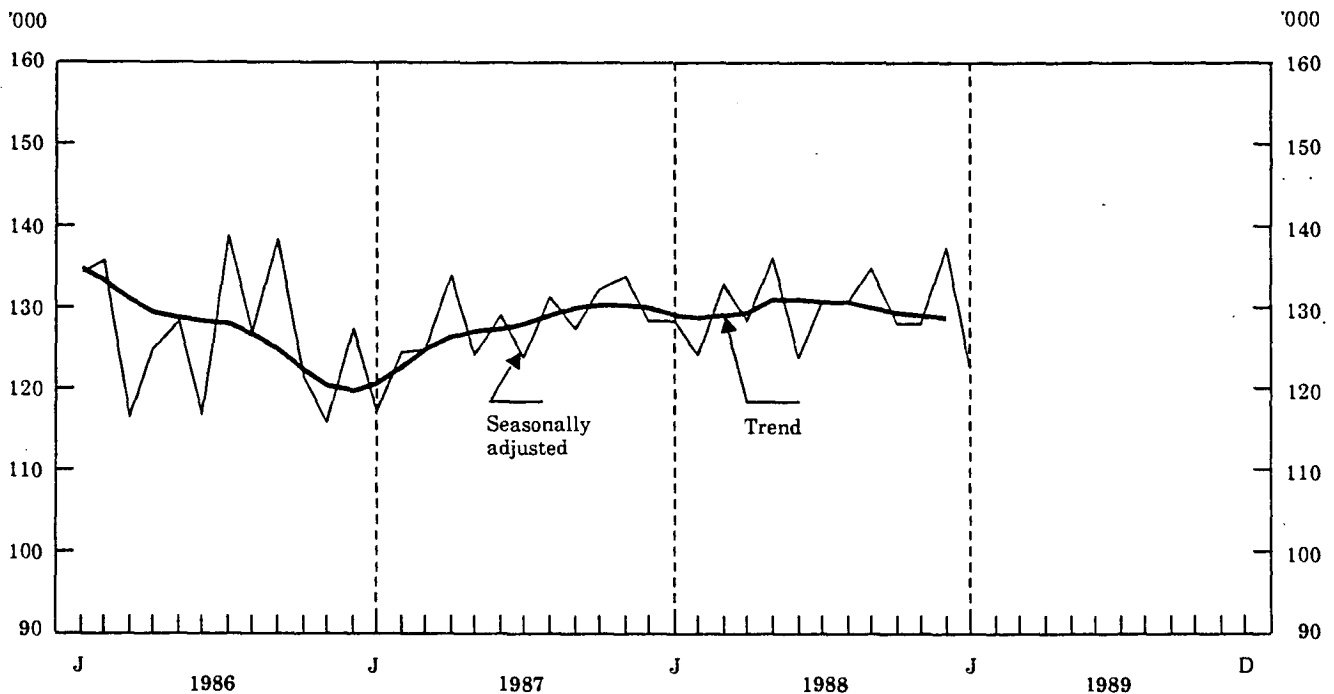
For further information on this release, contact Ken Bennett (613-951-4720), Household Surveys Division. See "How to Order Publications".

For summary information, available on the day of release, order Labour Force Information (71-001P,

**Labour Force Characteristics, Canada**

	February 1989	January 1989	February 1988
	(Seasonally Adjusted)		
Labour Force (,000)	13,435	13,458	13,217
Employment (,000)	12,413	12,441	12,188
Unemployment (,000)	1,022	1,017	1,029
Unemployment Rate (%)	7.6	7.6	7.8
Participation Rate (%)	67.1	67.2	66.8
Employment/Population Ratio (%)	62.0	62.1	61.6
	(Unadjusted)		
Labour Force (,000)	13,183	13,160	12,960
Employment (,000)	12,082	12,048	11,853
Unemployment (,000)	1,100	1,112	1,106
Unemployment Rate (%)	8.3	8.4	8.5
Participation Rate (%)	65.8	65.7	65.5
Employment/Population Ratio (%)	60.3	60.2	59.9

Monthly Sales of New Motor Vehicles, Canada, Seasonally Adjusted, in Units, 1986-1989



**New Motor Vehicle Sales**

January 1989

**Highlights**

**(Seasonally Adjusted)**

- Adjusted for seasonal fluctuations and the number of trading days, preliminary estimates indicate that sales of all new motor vehicles totalled 123,000 units in January 1989, a sharp decline of 10.8% from the revised level of a month earlier. Lower sales were posted for both passenger cars (-13.7%) and commercial vehicles (-4.4%).
- The 10.8% decrease in sales followed an increase of 7.3% in December and no growth in November 1988. New motor vehicle sales have fluctuated markedly since the beginning of 1988.

- On an origin basis, sales of North American passenger cars recorded a sizeable decline of 19.1% to a level of 55,000 units, while imported passenger cars increased by 0.7% to a level of 26,000 units. The January decrease for North American passenger cars followed a gain of 11.2% in December whereas imported passenger car sales increased for the third consecutive month.

**(Unadjusted)**

- Sales of all new motor vehicles totalled 85,000 units in January 1989, down 5.2% from the year-earlier level. Commercial vehicle sales increased by 1.1%, while passenger car sales decreased by 8.4%.

(continued on page 5.)

- Unit sales of North American passenger cars declined by 5.6%. Sales of imported passenger cars were down a significant 13.8% from their year-earlier level. The decline was attributable to a 21.3% decrease in cars imported from "other countries" and to a 10.3% drop in Japanese cars.
- The overseas manufacturers' share of the Canadian passenger car market declined to 32.1% from 34.1% a year earlier. This represents the seventh consecutive monthly market share decline for overseas manufacturers. The Japanese share declined to 22.9%, the fifth consecutive monthly decrease.
- Eight provinces registered lower unit sales of motor vehicles than a year earlier. Gains were recorded in New Brunswick (+5.1%) and British Columbia (+2.3%).

**North American vehicles:** motor vehicles manufactured or assembled in North America. These vehicles may be built by domestic or foreign-owned companies.

**Imported vehicles:** motor vehicles manufactured or assembled overseas and marketed in Canada by domestic or foreign-owned companies.

**Note to Users:**

The short-term trend provides a clearer picture of the direction and rate of change in new motor vehicle sales. It is calculated by the X-11 ARIMA seasonal adjustment program. Essentially, the calculation involves a 13-term Henderson moving average which smooths irregular fluctuations in the seasonally adjusted data. The trend for the last month is not shown in the chart since it frequently changes significantly with the addition of succeeding months of data.

Available on CANSIM: matrix 64.

(see table on page 6.)

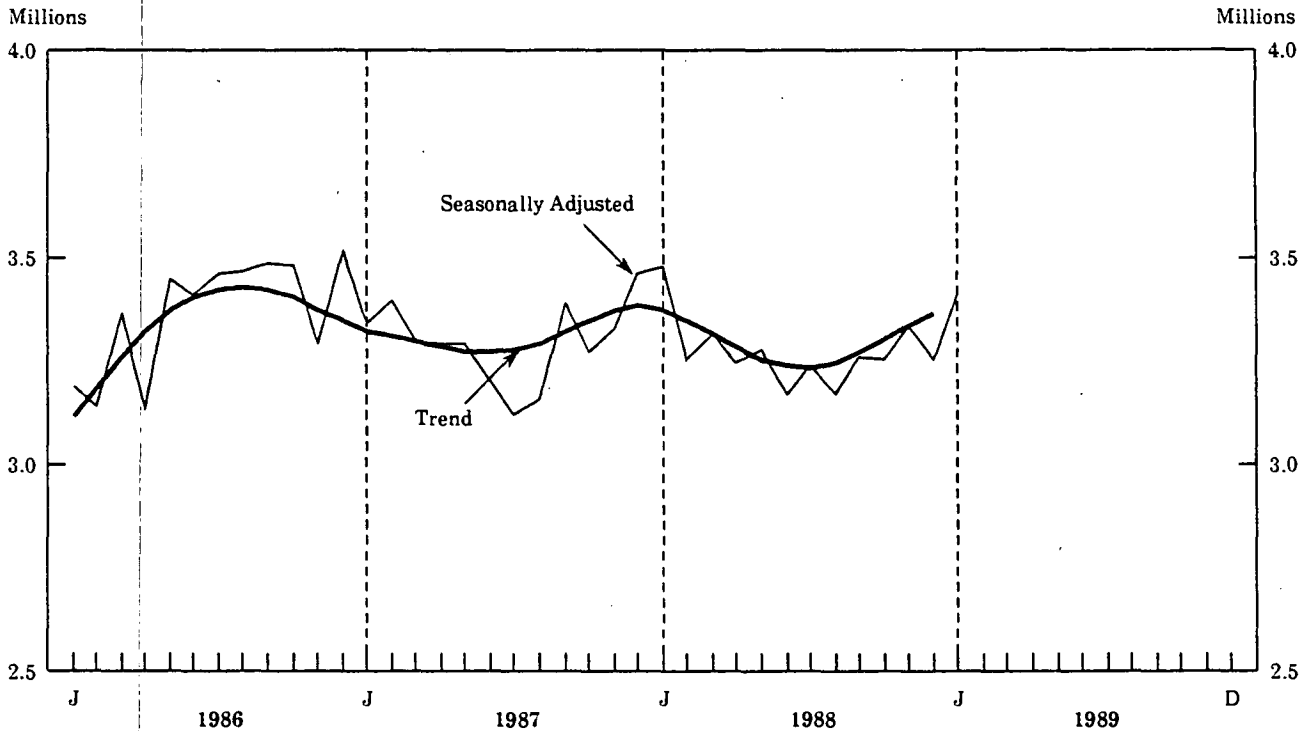
The January 1989 issue of *New Motor Vehicle Sales* (63-007, \$9/\$90) will be available the third week of May. See "How to Order Publications".

For more information on this release, contact Roger Laplante (613-951-3552) or Maurice Massaad (613-951-9682), Retail Trade Section, Industry Division.

**New Motor Vehicle Sales - Canada**  
January 1989

	October 1988 <sup>r</sup>		November 1988 <sup>r</sup>		December 1988 <sup>r</sup>		January 1989 <sup>p</sup>	
	(Seasonally Adjusted)							
	Units	% Change	Units	% Change	Units	% Change	Units	% Change
Total New Motor Vehicles	128,177	-4.9	128,203	-	137,516	7.3	122,672	-10.8
Passenger Cars by Origin:								
North America	62,533	1.1	61,560	-1.6	68,464	11.2	55,380	-19.1
Overseas	23,191	-21.8	24,197	4.3	25,646	6.0	25,815	0.7
Total	85,724	-6.3	85,757	-	94,110	9.7	81,196	-13.7
Commercial Vehicles	42,453	-2.0	42,446	-	43,406	2.3	41,476	-4.4
	January 1989		Change 1989/88		January 1989		Change 1989/88	
	(Unadjusted)							
	Units		%		\$(000)		%	
Total New Motor Vehicles	84,735		-5.2		1,546,477		1.3	
Passenger Cars by Origin:								
North America	36,977		-5.6		584,355		-0.3	
Japan	12,484		-10.3		199,461		-7.4	
Other Countries (Including South Korea)	4,995		-21.3		114,381		-11.2	
Total	54,456		-8.4		898,197		-3.5	
Commercial Vehicles by Origin:								
North America	26,324		-3.3		572,402		3.6	
Overseas	3,955		-44.6		75,877		74.6	
Total	30,279		-1.1		648,280		8.8	

### Total Trips to Canada by Non-residents, Seasonally Adjusted



### Travel Between Canada and Other Countries

January 1989

#### Highlights

#### Overnight Travel (Unadjusted)

- Preliminary estimates show that non-resident visits of one or more nights to Canada totalled 507,000, up marginally from January 1988. This represented the fifth consecutive highest monthly level ever witnessed. Trips by U.S. residents dropped 4.6% from January 1988's record level (which had been influenced by the upcoming Winter Olympics) but remained higher than in any other January since 1972. At the same time, visits by overseas residents jumped 35.8% above the January 1988 level to a new peak for the month.

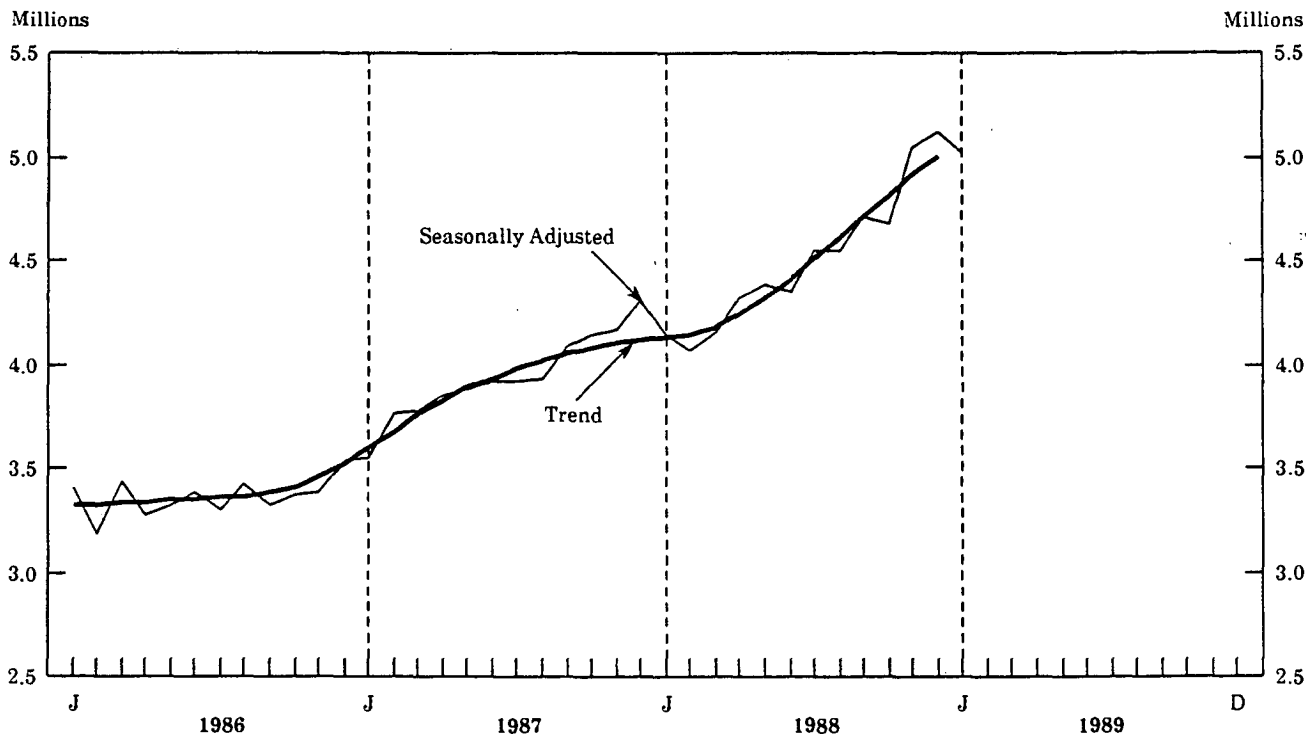
- The number of overnight trips abroad by Canadian residents also reached a new record level for January: 1,242,000 or 10.8% above a year ago. In January 1989, trips to the U.S. increased at a faster rate (14.3%) than visits to other countries (2.6%).

#### Total Travel (Unadjusted)

- Total trips to Canada by United States residents decreased by 5.8% from a year ago to 1,754,000, but were still higher than in the same month two years ago.
- Total trips to Canada by residents of countries other than the United States rose by 34.6% over a year ago, reaching a new high for January at 116,000.

(continued on page 8.)

### Total Trips Abroad by Canadian Residents, Seasonally Adjusted



- International trips by Canadian residents numbered 4,133,000, an increase of 17.9% from a year ago, the highest January level since 1972 (the year present statistical methods were introduced).

#### Total Travel (Seasonally Adjusted)

- In January 1989, the seasonally adjusted volume of foreign travel to Canada maintained the upward trend noted since the summer of 1988.
- Total international trips by Canadian residents (measured on their return) were down slightly from December. However, travel outside Canada had generally grown throughout 1987 and 1988.

**Note to Users:** The short-term trend provides a clearer picture of the direction and rate of change in international travel to and from Canada. Essentially, the seasonally adjusted series are smoothed by means of a 13-month Henderson moving average. This is useful for spotting turning points. The trend for the last month is not shown in the charts since it can change significantly with the addition of succeeding months of data.

Available on CANSIM: matrices 2661 - 2695.

The January 1989 issue of *International Travel - Advance Information* (66-001P, \$5.50/\$55) will be available mid-March. See "How to Order Publications".

For special tabulations and more information on this release, contact Paul L. Paradis (613-951-8933), International Travel Section, Education, Culture and Tourism.

(see table on page 9.)



# International Travel Between Canada and Other Countries

January 1989

	January 1989 <sup>p</sup>	% Change 1989/88
(Unadjusted)		
<b>Estimated Overnight Trips<sup>1</sup></b>		
<b>Non-resident Travellers:</b>		
All Countries	506,595	1.8%
United States	399,341	-4.6%
Other Countries	107,254	35.8%
<b>Residents of Canada:</b>		
All Countries	1,242,339	10.8%
United States	897,567	14.3%
Other Countries	344,772	2.6%
<b>Total Number of Trips</b>		
<b>Non-resident Travellers:</b>		
All Countries	1,869,882	-4.1%
United States	1,754,338	-5.8%
Other Countries	115,544	34.6%
<b>Residents of Canada:</b>		
All countries	4,132,916	17.9%
United States	3,788,144	19.5%
Other Countries	344,772	2.6%

	1989	1988		
	January <sup>p</sup>	December	November	October
(Seasonally Adjusted <sup>2</sup> )				
<b>Total Number of Trips</b>				
<b>Non-resident Travellers:</b>				
All Countries	3,408,800	3,251,100	3,335,100	3,255,100
United States	3,103,700	2,974,700	3,048,300	2,993,300
Other Countries	305,100	276,400	286,800	261,800
<b>Residents of Canada:</b>				
All Countries	5,028,900	5,122,300	5,041,600	4,682,600
United States	4,780,200	4,857,900	4,792,200	4,436,600
Other Countries	248,700	264,400	249,400	246,000

<sup>1</sup> Overnight estimates for the United States include auto and bus for one or more nights, and estimated long-term numbers for plane, train, boat and other methods. Figures for "Other Countries" exclude entries by land same day via the U.S. only.

<sup>2</sup> Totals may not add up due to rounding. Seasonally adjusted overnight trips will be available at a later date.

<sup>p</sup> Preliminary figures.

---

## Data Availability Announcements

---

### Department Store Sales by Province and Metropolitan Area

January 1989

Department stores in Canada reported sales totalling \$738 million in January 1989, up 1.2% over the revised level of \$730 million a year earlier.

Department store sales for the provinces and the 10 metropolitan areas surveyed were as follows (with the percentage change from January 1988 in parentheses):

#### Province

- Newfoundland, \$7.4 million (+ 3.7%);
- Prince Edward Island, \$4.7 million (-0.5%);
- Nova Scotia, \$21.6 million (-2.7%);
- New Brunswick, \$14.1 million (-2.2%);
- Quebec, \$137.6 million (-0.7%);
- Ontario, \$310.9 million (+ 2.4%);
- Manitoba, \$30.9 million (-2.3%);
- Saskatchewan, \$21.5 million (-2.7%);
- Alberta, \$85.0 million (+ 2.1%);
- British Columbia, \$104.7 million (+ 2.6%).

#### Metropolitan Area

- Calgary, \$32.8 million (-3.6%);
- Edmonton, \$37.7 million (+ 3.6%);
- Halifax-Dartmouth, \$12.4 million (-5.1%);
- Hamilton, \$23.0 million (+ 0.8%);
- Montreal, \$79.1 million (-2.1%);
- Ottawa-Hull, \$34.8 million (+ 0.3%);
- Quebec City, \$18.8 million (-2.5%);
- Toronto, \$125.7 million (-0.5%);
- Vancouver, \$61.2 million (+ 0.9%);
- Winnipeg, \$28.3 million (-2.8%).

#### Note to Users:

Information on department store sales and stocks by department will be released in *The Daily* during the week of March 20.

The January 1989 issue of *Department Store Monthly Sales, by Province and Selected Metropolitan Area* (63-004, \$2/\$20) will be available the first week of April. See "How to Order Publications".

For more information, contact Maurice Massaad (613-951-9682), Retail Trade Section, Industry Division.

### Pulpwood and Wood Residue Statistics

January 1989

Pulpwood receipts amounted to 4 410 945 cubic metres in January 1989, an increase of 15.3% from 3 826 127 cubic metres a year earlier. Receipts of wood residue totalled 4 243 864 cubic metres, up 3.2% from 4 110 980 cubic metres in January 1988.

Consumption of pulpwood and wood residue was reported as 8 971 098 cubic metres, an increase of 6.0% from 8 466 354 cubic metres reported the previous year.

The closing inventory of pulpwood and wood residue totalled 21 368 243 cubic metres, an increase of 10.2% from 19 399 759 cubic metres a year earlier.

Available on CANSIM: matrix 54.

The January 1989 issue of *Pulpwood and Wood Residue Statistics* (25-001, \$5.50/\$55) will be available at a later date. See "How to Order Publications".

For more information on this release contact Jacques Lepage (613-951-3516), Industry Division.

### Steel Wire and Specified Wire Products

January 1989

Factory shipments of steel wire and specified wire products for January 1989 are now available, as are production and export market data for selected commodities.

Factory shipments of steel wire and specified wire products totalled 57 937 tonnes in January 1989, an increase of 29.8% from the 44 644 tonnes shipped during the previous month.

Available on CANSIM: matrix 122 (series 19).

The January 1989 issue of *Steel Wire and Specified Wire Products* (41-006, \$4.50/\$45) will be available at a later date. See "How to Order Publications".

For more information on this release, contact Bruno Pepin (613-951-9837), Industry Division.

---

## Electric Storage Batteries

January 1989

Canadian manufacturers of electric storage batteries sold 236,377 automotive replacement batteries in January 1989, an increase of 6.8% from 221,357 batteries sold a year earlier.

Information on sales of other types of storage batteries is also available.

The January 1989 issue of *Factory Sales of Electric Storage Batteries* (43-005, \$4.50/\$45) will be available at a later date. See "How to order Publications".

For more information on this release, contact J.-P. Beauparlant (613-951-3526), Industry Division.

## Steel Pipe and Tubing

January 1989

Steel pipe and tubing production for January 1989 totalled 118 692 tonnes, a decrease of 18.5% from the 145 554 tonnes produced a year earlier.

Available on CANSIM: matrix 35.

The January 1989 issue of *Steel Pipe and Tubing* (41-011 \$4.50/\$45) will be available at a later date. See "How to Order Publications".

For more information on this release, contact Gerry Barrett (613-951-3515), Industry Division.

## Electric Lamps

February 1989

Preliminary data for Electric Lamps (Light Bulbs and Tubes) for February 1989 are now available.

The publication *Electric Lamps (Light Bulbs and Tubes)* (43-009, \$4.50/\$45) will be released at a later date.

For further information, contact Laurie Vincent (613-951-3523) Industry Division.

## Cement

January 1989

Canadian manufacturers shipped 463 017 tonnes of cement in January 1989, an increase of 9.4% from the 423 256 tonnes shipped a year earlier, but a decrease of 34.5% from the 706 642 tonnes shipped the month before.

Available on CANSIM: matrices 92 and 122 (series 35).

The January 1989 issue of *Cement* (44-001, \$4.50/\$45) will be available at a later date.

For more information on this release, contact Ron Fortin (613-951-3527), Industry Division.

## Milling Statistics

January 1989

The total amount of wheat milled in January 1989 was 179 893 tonnes, down 4% from the 187 606 tonnes milled a year earlier.

The resulting wheat flour production decreased 3% to 133 770 tonnes from 137 592 tonnes a year earlier.

The January 1989 issue of *Cereals and Oilseeds Review* (22-007, \$11.50/\$115) is scheduled for release in April. See "How to Order Publications".

For further information on this release, contact A. Dupuis (613-951-3871), Agriculture Division.

## Hospital Statistics

Preliminary Annual Report, 1987-88

Statistics from the Preliminary Annual Survey of Hospitals are now available for the 1987/88 reporting year.

These provide key data elements on hospital utilization and expenditures. Utilization variables include patient days, occupancy, separations, admissions and average length of stay. Related to expenditures are figures for paid hours, salaries and benefits, medical and surgical supplies and drug costs.

The data are compiled by province and hospital type and size. Although these statistics are preliminary, they nevertheless provide a reasonably accurate portrayal of costs and utilization of Canadian general and allied special hospitals.

For more information on this release, contact Peter Mix (613-951-1650), Health Care Section, Health Division.

---

## Publication Released

---

**Footwear Statistics, January 1989.**  
**Catalogue number 33-002**  
(Canada: \$4.50/\$45; Other Countries: \$5.50/\$55).

### How to Order Publications

*Statistics Canada publications may be purchased by mail order from Publication Sales, Room 1710, Main Building, Statistics Canada, Ottawa K1A 0T6 or phone 613-951-7277.*

*Please enclose cheque or money order payable to the Receiver General for Canada/Publications and provide full information on publications required (catalogue number, title, issue).*

*Publications may also be ordered through Statistics Canada's offices in St. John's, Halifax, Montreal, Ottawa, Sturgeon Falls, Toronto, Winnipeg, Regina, Edmonton, Calgary and Vancouver, or from authorized bookstore agents or other booksellers.*

*A national toll-free telephone order service is now in operation at Statistics Canada. The toll-free line (1-800-267-6677) can be used by Canadian customers for the ordering of Statistics Canada products and services.*

**The  
Daily**

### Statistics Canada's Official Release Bulletin for Statistical Information

Catalogue 11-001E. Price: Canada \$100/year; other countries \$125/year

Published by the Communications Division (Director - Douglas Newson)  
Statistics Canada, 3-N, R.H. Coats Bldg., Ottawa K1A 0T6.

Senior Editor: Greg Thomson (613-951-1116)  
Editor: Bonnie Williams (613-951-1103)

Published under the authority of the Minister of Regional Industrial Expansion and the Minister of State for Science and Technology. Statistics Canada should be credited when reproducing or quoting any part of this document. Extracts from this publication may be reproduced for individual use without permission provided the source is fully acknowledged. However, reproduction of this publication in whole or in part for purposes of resale or redistribution requires written permission from the Publishing Services Group, Permissions Officer, Canadian Government Publishing Centre, Ottawa, Canada K1A 0S9.

---

## Major Release Dates

---

Week of March 13 - 17

(Release dates are subject to change)

---

Anticipated date(s) of release	Title	Reference period
<b>March</b>		
13	Farm Product Price Index	January 1989
17	Consumer Price Index	February 1989
17	Preliminary Statement of Canadian International Trade	January 1989

---

STATISTICS CANADA LIBRARY  
BIBLIOTHÈQUE STATISTIQUE CANADA



1010498311