

The Daily

Statistics Canada

Friday, March 2, 1990

For release at 10:00 a.m.

MAJOR RELEASES

- **Building Permits, November 1989** 2
The preliminary value for building permits issued in Canada continued to slacken in November, falling 2.9% to \$3,180.9 million.
 - **Federal Government Employment, September 1989** 4
The number of employees in the federal general government universe increased 0.8% (3,100) to 373,000 in September 1989, from 369,900 in September 1988.
-

DATA AVAILABILITY ANNOUNCEMENTS

Coal and Coke Statistics, December 1989	6
Asphalt Roofing, January 1990	6
Rigid Insulating Board, January 1990	6
Major Appliances, January 1990	6
Process Cheese and Instant Skim Milk Powder, January 1990	7
Gypsum Products, January 1990	7

PUBLICATIONS RELEASED

8

MAJOR RELEASE DATES: Week of March 5 to 9 9

**NOT FOR LOAN
NE S'EMPRUNTE PAS**

STATISTICS CANADA STATISTIQUE CANADA

MAR 2 1990



Statistics
Canada

Statistique
Canada

Canada

MAJOR RELEASES

Building Permits

November 1989

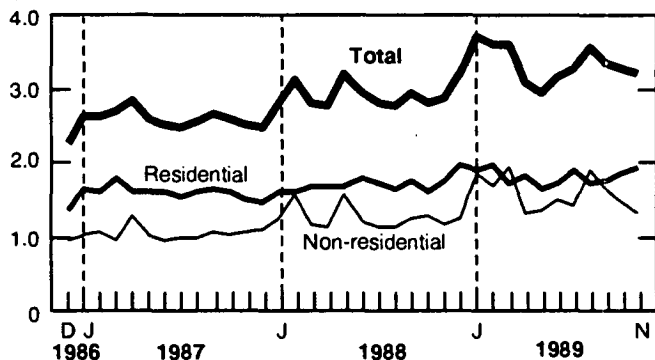
Summary

The preliminary value of building permits issued in Canada continued to slacken in November, falling 2.9% to \$3,180.9 million, from \$3,275.5 million in October. Once again, the non-residential sector was entirely responsible for the decrease.

Value of Building Permits Issued in Canada

Seasonally Adjusted

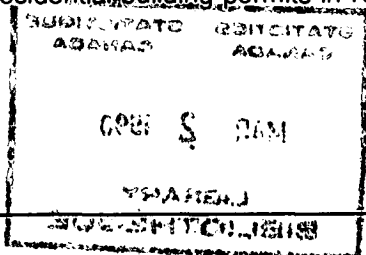
\$ billions



Note: Revised data for October, preliminary data for November.

Residential Sector

- The preliminary value of residential building permits was \$1,896.6 million, up 3.6% over \$1,831.3 million in October.
- This increase was attributable to both the single-family dwelling sector, which increased 2.3% to \$1,308.4 million and, more particularly, the multi-family dwelling sector, which increased 6.6% to \$588.2 million.
- All regions reported gains in the value of residential building permits in November.

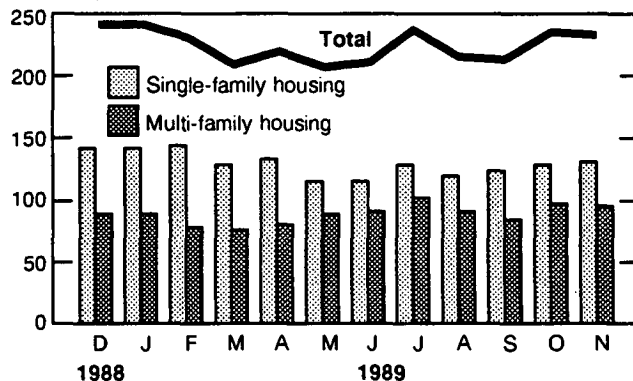


- The number of dwelling units authorized in November fell 0.6% to 224,904 units at an annual rate (129,564 single detached and 95,340 multiple dwellings), from the October level of 226,224 units.

Dwelling Units Authorized in Canada

Seasonally Adjusted at Annual Rates

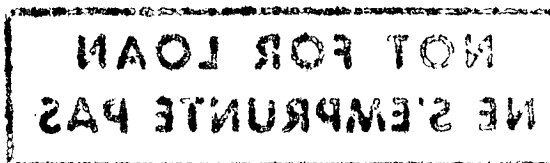
'000 units



Note: Revised data for October, preliminary data for November.

Non-residential Sector

- The preliminary value of non-residential building permits continued to decrease in November, falling 11.1% to \$1,284.3 million from \$1,444.2 million in October.
- This drop was entirely due to the industrial sector, which decreased 28.9% to \$316.2 million, and the commercial sector, which decreased 6.4% to \$727.4 million. In contrast, the institutional sector increased 8.5% to \$240.7 million.
- On a regional basis, only Quebec and the Prairies registered losses in the value of non-residential building permits in November.

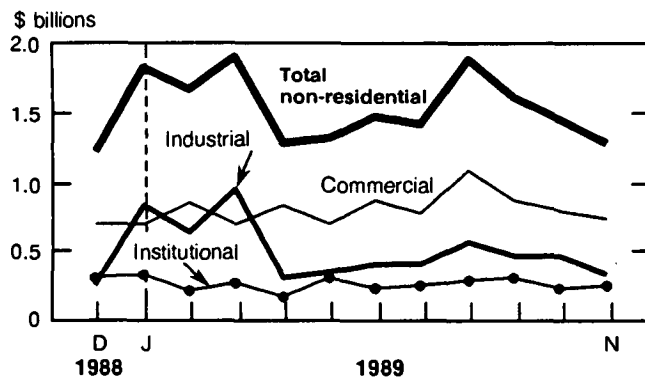


Short-term Trend

- The short-term trend of construction (excluding engineering projects) remained stable in September at 144.5 (the same as the revised August index).
- The trend index of residential permits rose 0.4% to 156.3, while the non-residential trend index decreased 0.5% to 132.2 in September.

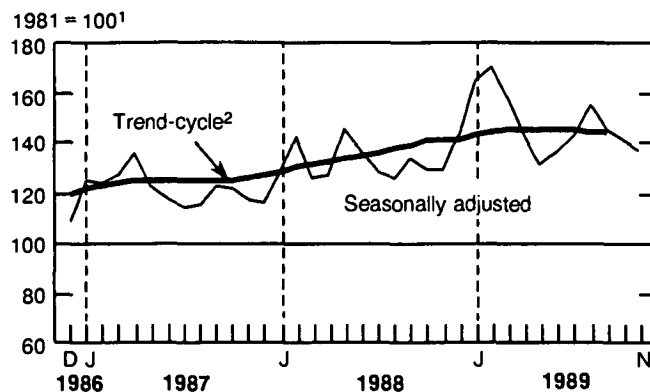
Value of Non-residential Permits Issued in Canada

Seasonally Adjusted



Note: Revised data for October, preliminary data for November.

Building Permits Indices



¹ This series is deflated by using the construction input price index, which includes cost of material and labor.

² The trend-cycle shows the seasonally-adjusted value of building permits without irregular influences which can obscure the short-term trend.

Available on CANSIM: matrices 80 (levels 3-7, 10-15), 129, 137, 443, 989-992, 994, 995 and 4073.

The November 1989 issue of *Building Permits* (64-001, \$20/\$200) is scheduled for release the second week of March. See "How to Order Publications".

For further information on this release, contact Louise Marmen (613-951-2583), Investment and Capital Stock Division.

Federal Government Employment

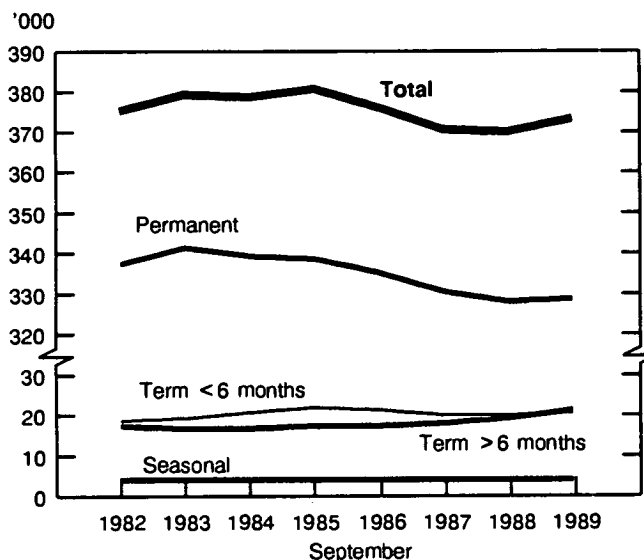
September 1989

Highlights

Year-Over-Year

- The number of employees in the federal general government universe increased 0.8% (3,100 employees) to 373,000 in September 1989, from 369,900 in September 1988. Over half of the increase can be attributed to hiring in the Departments of Revenue Canada and Employment and Immigration for the new GST and the Refugee Determination Programs.
- A slight 0.2% increase (675 employees) was noted for permanent employment, bringing the September 1989 total to 327,900.

Federal General Government Employment by Type of Employment



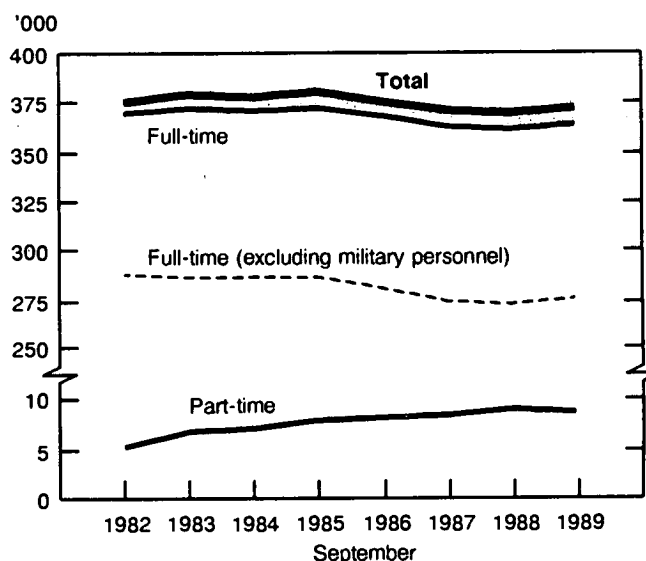
- The number of term employees hired for a period of over six months increased 9.7% (1,875 employees), continuing a trend evident since 1983. Terms hired for a period of less than six months rose 1.5% (300 employees) to return to 1984 levels.

- The number of seasonal and casual employees increased 7.4% to 3,650 in September 1989.
- General government includes departments, agencies, boards, commissions, military personnel, RCMP uniformed personnel, but excludes government enterprises.

Seven-year Trend

- From a level of 375,500 in September 1982, federal general government employment grew 1.3% to peak at 380,300 in September 1985. Since September 1985, the number of employees has decreased 1.9% (7,300 employees). This decrease is most evident in the full-time employment component, down 2.2%, and has been partially offset by a 13.0% increase in part-time employment for the same period.

Federal General Government Employment by Component



- Full-time employment increased 0.6% (2,200 employees) between September 1982 and 1985. A declining trend followed from September 1985 to September 1988, as full-time employment dropped (3.0% or 11,400 employees) to 361,200, from 372,600. In contrast, the number of full-time employees increased 1.0% (3,100) to 364,300 for September 1989, from 361,200 in September 1988.

- Full-time employment, excluding military personnel, decreased 5.3% (15,200 employees) to 272,200 in September 1988, from 287,400 in September 1982. An increase of 1.0% (2,700) was noted over the period September 1988 to 1989. The number of military personnel increased steadily over the September 1982 to 1989 period (from 83,000 to 89,400), for a total increase of 7.7% (6,400 employees).
- During the September 1982 to 1988 period, part-time employment increased by 3,660 employees, from 5,100 to 8,760. For September 1989, the number of employees for this component remained virtually unchanged at 8,740.

Departmental Changes

- The 1989-1990 budget introduced a number of new programs, some of which had a direct impact on the number of federal government employees.
- The Department of Employment and Immigration was responsible for 30.6% (950) of the total increase for federal government employment, the largest. Hiring for the new refugee determination system and for the Immigration Refugee Board accounted for nearly all of the increase.
- Revenue Canada's increase of 700 employees was evenly split between Taxation and Customs and Excise. Taxation attributed its increase to staff being hired in preparation for the GST. Customs and Excise has hired employees for the Canada-United States Free Trade Agreement, as well as in the preparation for the implementation of the new tax legislation.
- Downsizing initiatives in the federal government resulted in decreases in a number of departments. The most prominent decreases were in the Departments of Public Works (-400), Energy, Mines and Resources (-250), and Agriculture (-150).
- A large decrease in the Department of Transport was due to downsizing (-200) and also to the intra-departmental transfer of employees (-100) and responsibilities to the Department of National Defence, for the operation of the Goose Bay airport.

Government Enterprises

- Between September 1988 and 1989, the federal government continued to privatize Crown Corporations. As a result, employment in federal government enterprises decreased 16.0% (31,500 employees), to 165,000 in September 1989.
- The sale of Air Canada on July 7, 1989 and the privatization of a number of Canadian National's subsidiaries accounted for 92% of the total year-over-year decrease in federal government enterprise employment.
- The remaining 8% decrease was primarily due to the lay-off of track maintenance workers at CN Rail, to employment restraint and program efficiency at the Canada Post Corporation, and to the inter-governmental merger of the Saskatchewan Mining Development Corporation with Eldorado Nuclear Limited to form the provincial enterprise CAMECO. This merger resulted in the transferring of employees and responsibilities to the Saskatchewan provincial government.

Available on CANSIM: matrix 2717 (for quarterly data), 2718 (for monthly data by province) and 2720 (for Canadian Armed Forces data).

Additional information on Federal Government Employment may be obtained by writing to the Public Institutions Division, Employment Section, 20th Floor, R.H. Coats Building, Tunney's Pasture, Ottawa, Ontario K1A 0T6.

Data are also available through special tabulation. For more information or general inquiries on Public Institutions Division's products or services contact Patricia Phillips (613-951-0767), Public Institutions Division.

For more information on this release, contact Murray McIlveen (613-951-8306) or Christine Dominguez (613-951-8510), Public Institutions Division. ■

DATA AVAILABILITY ANNOUNCEMENTS

Coal and Coke Statistics

December 1989

Canadian production of coal totalled 5 840 kilotonnes in December 1989, down 7.2% from the corresponding month last year. The year-to-date production figure stands at 70 473 kilotonnes, down 0.2%.

Exports in December rose 33.5% over December 1988 to 3 201 kilotonnes, while imports fell 33.1% to 1 643 kilotonnes. Cumulative figures for the year show exports of 32 744 kilotonnes, 3.2% above last year's level.

Coke production decreased to 347 kilotonnes, a difference of 8.3% from December 1988.

Available on CANSIM: matrix 9.

The December 1989 issue of *Coal and Coke Statistics* (45-002, \$9/\$90) will be available the first week of March. See "How to Order Publications".

For further information on this release, contact Dave Madsen (613-951-9823), Energy Section, Industry Division. ■

Asphalt Roofing

January 1990

Shipments of asphalt shingles totalled 2 237 672 metric bundles in January 1990, an increase of 2.7% over the 2 179 047 bundles shipped a year earlier.

Available on CANSIM: matrices 32 and 122 (series 27 and 28).

The January 1990 issue of *Asphalt Roofing* (45-001, \$4.70/\$47) will be available at a later date. See "How to Order Publications".

For further information on this release, contact Sandra Bohatyretz (613-951-3531), Industry Division. ■

Rigid Insulating Board

January 1990

Shipments of rigid insulating board totalled 2 696 thousand square metres (12.7 mm basis) in January 1990, an increase of 17.0% over 2 305^r thousand square metres (12.7 mm basis) in January 1989.

Available on CANSIM: matrices 31 (series 1) and 122 (series 4-7).

The January 1990 issue of *Rigid Insulating Board* (36-002, \$4.70/\$47) will be available at a later date. See "How to Order Publications".

For further information on this release, contact Sandra Bohatyretz (613-951-3531), Industry Division. ■

Major Appliances

January 1990

Domestic sales of major appliances by Canadian manufacturers decreased 9.3% to 165,420 units in January 1990, from 182,346 units in December 1989, and was 0.4% lower than the 166,110^r units sold in the same month of 1989.

Available on CANSIM: matrices 65, 66 and 122 (series 30).

The January 1990 issue of *Production, Sales and Stocks of Major Appliances* (43-010, \$4.70/\$47) will be available at a later date. See "How to Order Publications".

For further information on this release, contact J.P. Beauparlant (613-951-3526), Industry Division. ■

Process Cheese and Instant Skim Milk Powder

January 1990

Production of process cheese in January 1990 totalled 7 717 940 kilograms, an increase of 49.5% over December 1989 and an increase of 51.8% over January 1989.

Total production of instant skim milk powder during the month was 453 182 kilograms, an increase of 2.1% over December 1989, but a decrease of 21.0% from January 1989.

Available on CANSIM: matrix 188 (series 1.10).

The January 1990 issue of *Production and Inventories of Process Cheese and Instant Skim Milk Powder* (32-024, \$4.70/\$47) will be available at a later date. See "How to Order Publications".

For further information on this release, contact Brian Preston (613-951-3511), Industry Division. ■

Gypsum Products

January 1990

Manufacturers shipped 21 508 thousand square metres of plain gypsum wallboard in January 1990, down 4.8% from the 22 581 thousand square metres shipped in January 1989, but up 26.9% over the 16 953 thousand square metres shipped in December 1989.

Available on CANSIM: matrices 39 and 122 (series 11).

The January 1990 issue of *Gypsum Products* (44-003, \$4.70/\$47) will be available at a later date. See "How to Order Publications".

For further information on this release, contact Roland Joubert (613-951-3527), Industry Division. ■

PUBLICATIONS RELEASED

Refined Petroleum Products, November 1989.

Catalogue number 45-004

(Canada: \$17.30/\$173; Other Countries: \$20.80/\$208).

Wholesale Trade, November 1989.

Catalogue number 63-008

(Canada: \$5.80/\$58; Other Countries: \$7/\$70).

How to Order Publications

Statistics Canada publications may be purchased by mail order from Publication Sales, Room 1710, Main Building, Statistics Canada, Ottawa K1A 0T6 or phone 613-951-7277.

Please enclose cheque or money order payable to the Receiver General for Canada/Publications and provide full information on publications required (catalogue number, title, issue).

Publications may also be ordered through Statistics Canada's offices in St. John's, Halifax, Montreal, Ottawa, Toronto, Winnipeg, Regina, Edmonton, Calgary and Vancouver, or from authorized bookstore agents or other booksellers.

A national toll-free telephone order service is now in operation at Statistics Canada. The toll-free line (1-800-267-6677) can be used by Canadian customers for the ordering of Statistics Canada products and services.

**The
Daily**

Statistics Canada's Official Release Bulletin for Statistical Information

Catalogue 11-001E. Price: Canada \$105/year; other countries \$126/year

Published by the Communications Division (Director - Douglas Newson)
Statistics Canada, 3-N, R.H. Coats Bldg., Ottawa K1A 0T6.

Senior Editor: Greg Thomson (613-951-1116)

Editor: Bonnie Williams (613-951-1103)

Published under the authority of the Minister of Regional Industrial Expansion. Statistics Canada should be credited when reproducing or quoting any part of this document. Extracts from this publication may be reproduced for individual use without permission provided the source is fully acknowledged. However, reproduction of this publication in whole or in part for purposes of resale or redistribution requires written permission from the Publishing Services Group, Permissions Officer, Canadian Government Publishing Centre, Ottawa, Canada K1A 0S9.

MAJOR RELEASE DATES

Week of March 5 to 9
(Release dates are subject to change)

Anticipated date(s) of release	Title	Reference period
March		
5	Canadian Composite Leading Indicator	December 1989
6	Industrial Corporations: Financial Statistics	Fourth Quarter 1989
7	Private and Public Investment in Canada	Intentions 1990
7	Help-wanted Index	February 1990
9	Labour Force Survey	February 1990
9	New Motor Vehicle Sales	January 1990
9	New Housing Price Index	January 1990
9	Estimates of Labour Income	December 1989

The Daily

Statistics Canada

Index to Data Releases February 1990

Subject	Reference Period	Release Date
Aboriginal Peoples and Visible Minorities, Profile of	1986 Census	February 23, 1990
Air Carrier Operations in Canada	October-December 1988	February 8, 1990
Air Passenger Statistics, International Scheduled	1988 (Preliminary Estimates)	February 9, 1990
Appliances, Specified Domestic Electrical	December 1989	February 8, 1990
Aviation Statistics Centre Service Bulletin	November 1989	February 16, 1990
Births in Canada, Census Metropolitan Areas	1986	February 20, 1990
Biscuits, Production of	Fourth Quarter 1989	February 1, 1990
Boxes and Wrappers, Corrugated	January 1990	February 21, 1990
Bread and Other Bakery Products Industry	1987 Census of Manufactures	February 13, 1990
Bus, Passenger and Urban Transit Statistics	December 1989	February 12, 1990
Business Conditions Survey Quarterly, Canadian Manufacturing Industries	January 1990	February 5, 1990
Business Services	1985-1987	February 15, 1990
Canadian Economic Observer	February 1990	February 22, 1990
Canvas and Related Products Industry	1987 Census of Manufactures	February 20, 1990
Carpet, Mat and Rug Industry	1987 Census of Manufactures	February 2, 1990
Caterers and Taverns, Restaurants	December 1989	February 14, 1990
Cement	December 1989	February 5, 1990
CEO	February 1990	February 22, 1990
Cheese Process and Instant Skim Milk Powder	December 1989	February 1, 1990
Children's Clothing Industry	1987 Census of Manufactures	February 23, 1990
Clothing and Apparel Industries, n.e.c., Other	1987 Census of Manufactures	February 20, 1990
Clothing Industry, Occupational	1987 Census of Manufactures	February 15, 1990
Coal and Coke Statistics	November 1989	February 7, 1990
Commodity Exports (H.S. Based)	December 1989	February 23, 1990
Commodity Imports (H.S. Based)	December 1989	February 28, 1990
Concrete Price Indexes, Precast	Fourth Quarter 1989	February 16, 1990



Statistics
Canada

Statistique
Canada

Canada

Index to Data Releases, February 1990

Subject	Reference Period	Release Date
Confectionery Industry, Sugar and Chocolate	1987 Census of Manufactures	February 20, 1990
Construction Building Materials Price Index: Non-residential	December 1989	February 15, 1990
Construction Building Materials Price Index: Residential	December 1989	February 15, 1990
Construction Price Indexes, Non-residential Building	Fourth Quarter 1989	February 7, 1990
Construction Type Plywood	December 1989	February 20, 1990
Construction Union Wage Rate Index	December 1989	February 9, 1990
Consumer Price Index	January 1990	February 16, 1990
CPI	January 1990	February 16, 1990
Crushing Statistics, Milling	December 1989	February 7, 1990
Dairy Review	December 1989	February 13, 1990
Death, Causes of	1988	February 22, 1990
Department Store Sales and Stocks	December 1989	February 23, 1990
Department Store Sales by Province and Metropolitan Area	December 1989	February 12, 1990
Earnings and Hours, Employment	December 1989	February 27, 1990
Eggs, Production of	December 1989	February 14, 1990
Electric Power Selling Price Indexes	September-December 1989	February 1, 1990
Electric Power Statistics	November 1989	February 1, 1990
Electric Storage Batteries	December 1989	February 7, 1990
Employment, Earnings and Hours	December 1989	February 27, 1990
Export and Import Price Indexes	December 1989	February 16, 1990
Exports by Commodity (H.S. Based)	December 1989	February 23, 1990
Exports, Steel	January 1990	February 16, 1990
Fabric Industry, Broad Knitted	1987 Census of Manufactures	February 2, 1990
Farm Cash Receipts	January-December 1989	February 23, 1990
Farm Input Price Index	Fourth Quarter 1989	February 7, 1990
Farm Product Price Index	December 1989	February 12, 1990
Feed Industry	1987 Census of Manufactures	February 13, 1990
Fibres Processing and Felt Products Industry	1987 Census of Manufactures	February 13, 1990
Financial Indexes, Selected	January 1990	February 19, 1990
Fish Products Industry	1987 Census of Manufactures	February 23, 1990
Food Products Industries Including Malt and Malt Flour Industry, Other	1987 Census of Manufactures	February 15, 1990
Footwear Industry	1987 Census of Manufactures	February 2, 1990
Footwear Statistics	December 1989	February 12, 1990
Foundation Garment Industry	1987 Census of Manufactures	February 23, 1990
Fruit and Vegetable Industry, Canned and Preserved	1987 Census of Manufactures	February 20, 1990
Fruits and Vegetables, Processed	November 1989	February 6, 1990
Furniture Products, Shipments of Office	Fourth Quarter 1989	February 22, 1990
Gas, Sales of Natural	December 1989	February 21, 1990
Glove Industry	1987 Census of Manufactures	February 20, 1990
Government Business Enterprises, Federal	1988	February 6, 1990
Government Enterprise Finance, Provincial	1987	February 21, 1990
Government Long-term Debt, Local	January 1990	February 23, 1990

Index to Data Releases, February 1990

Subject	Reference Period	Release Date
Governments, Short-term Debt of Local	December 1989	February 16, 1990
Grain Marketing Situation Report	January 1990	February 19, 1990
Grains and Oilseeds, Supply and Disposition of Major	1988-89	February 15, 1990
Grains, Deliveries of Major	December 1989	February 8, 1990
Gypsum Products	December 1989	February 1, 1990
Handbag Industry, Luggage and Purse	1987 Census of Manufactures	February 2, 1990
Hardboard, Particleboard and Waferboard	December 1989	February 12, 1990
Help-wanted Index	January 1990	February 7, 1990
Homeowner Repair and Renovation Expenditure in Canada	1988	February 22, 1990
Homicide in Canada	1989	February 23, 1990
Hosiery Industry	1987 Census of Manufactures	February 23, 1990
Hours, Employment and Earnings	December 1989	February 27, 1990
Household Facilities by Income and Other Characteristics	1989	February 21, 1990
Housing Price Index, New	December 1989	February 9, 1990
Housing Starts	December 1989	February 5, 1990
Housing Starts and Completions - Final Release	December 1989	February 5, 1990
Immigrants in Canada: Selected Highlights	January 1990	February 12, 1990
Import and Export Price Indexes	December 1989	February 16, 1990
Imports by Commodity (H.S. Based)	December 1989	February 28, 1990
Industrial Chemicals and Synthetic Resins	December 1989	February 7, 1990
Industrial Product Price Index	January 1990	February 28, 1990
Instruments and Related Products Industry, Other	1987 Census of Manufactures	February 13, 1990
IPPI	January 1990	February 28, 1990
Juristat: National Summary of Alternative Measures Services for Young Persons	1990	February 22, 1990
Labour Force Survey	January 1990	February 9, 1990
Labour Income, Estimates of	November 1989	February 7, 1990
Leading Indicator, Composite	November 1989	February 5, 1990
Leather and Allied Products Industry, Other	1987 Census of Manufactures	February 15, 1990
Leather Tanneries Industry	1987 Census of Manufactures	February 2, 1990
Legal Aid in Canada, Resource and Caseload Statistics	1988-89	February 15, 1990
Leisure and Personal Services	1985-1987	February 15, 1990
Livestock Report	January 1990	February 28, 1990
Luggage, Purse and Handbag Industry	1987 Census of Manufactures	February 2, 1990
Machine Shop Industry	1987 Census of Manufactures	February 2, 1990
Machinery and Equipment Price Indexes	Fourth Quarter 1989	February 14, 1990
Manufacturing, Monthly Survey of	December 1989	February 20, 1990
Marriages in Canada and the Provinces	1988	February 16, 1990
Mat and Rug Industry, Carpet	1987 Census of Manufactures	February 2, 1990

Index to Data Releases, February 1990

Subject	Reference Period	Release Date
Meat and Meat Products (Except Poultry)		
Industry	1987 Census of Manufactures	February 23, 1990
Meat Products, Stocks of Frozen	February 1990	February 22, 1990
Men's and Boys' Clothing Contractors		
Industry	1987 Census of Manufactures	February 23, 1990
Men's and Boys' Coat Industry	1987 Census of Manufactures	February 15, 1990
Men's and Boys' Pants Industry	1987 Census of Manufactures	February 15, 1990
Men's and Boys' Shirt and Underwear		
Industry	1987 Census of Manufactures	February 15, 1990
Men's and Boys', Suit and Jacket Industry	1987 Census of Manufactures	February 2, 1990
Metal Fabricating Industries n.e.c., Other	1987 Census of Manufactures	February 2, 1990
Metal Products Industries, Other Stamped and Pressed		
	1987 Census of Manufactures	February 6, 1990
Milk Industry, Fluid	1987 Census of Manufactures	February 2, 1990
Milk Powder, Instant Skim and Cheese		
Process	December 1989	February 1, 1990
Milling and Crushing Statistics	December 1989	February 7, 1990
Mineral Wool	January 1990	February 21, 1990
Minorities and Aboriginal Peoples, Profile of Visible	1986 Census	February 23, 1990
Motor Carrier Freight Quarterly Survey	Third Quarter 1989	February 28, 1990
Motor Vehicle Sales, New	December 1989 and Annual 1989	February 12, 1990
Oil Pipeline Transport	November 1989	February 9, 1990
Oils and Fats	December 1989	February 16, 1990
Particleboard, Waferboard and Hardboard	December 1989	February 12, 1990
Petroleum Products, Sales of Refined	January 1990	February 28, 1990
Plastic Film and Bags	Fourth Quarter 1989	February 16, 1990
Population for Census Divisions and CMA's, Estimates of	June 1, 1989	February 12, 1990
Poultry Products Industry	1987 Census of Manufactures	February 2, 1990
Poultry Products, Stocks of Frozen	February 1, 1990	February 15, 1990
Provincial Economic Accounts	Estimates for 1988	February 2, 1990
Purse and Handbag Industry, Luggage	1987 Census of Manufactures	February 2, 1990
Railway Carloadings	December 1989	February 5, 1990
	Seven-day Period Ending	February 8, 1990
	January 21, 1990	
	Ten-day Period Ending	February 15, 1990
	January 31, 1990	
Railway Operating Statistics	November 1989	February 5, 1990
Raw Materials Price Index	January 1990	February 28, 1990
Restaurants, Caterers and Taverns	December 1989	February 14, 1990
Retail Trade	December 1989 and Annual Review	February 23, 1990
RMPI	January 1990	February 28, 1990
Sawmills East of the Rockies	December 1989	February 20, 1990
Sawmills in British Columbia	December 1989	February 22, 1990
Shipping Statistics: Canadian International		
Seaborne	1988	February 21, 1990
Socio-Economic Profiles of Taxfilers	1988	February 13, 1990

Index to Data Releases, February 1990

Subject	Reference Period	Release Date
Soft Drink Industry	1987 Census of Manufactures	February 20, 1990
Soft Drinks	January 1990	February 16, 1990
Steel Exports	January 1990	February 16, 1990
Steel Pipe and Tubing	December 1989	February 7, 1990
Steel Price Indexes, Structural	Fourth Quarter 1989	February 16, 1990
Steel Primary Forms	December 1989	February 8, 1990
Steel Primary Forms (Steel Ingots)	Week Ending January 27, 1990	February 1, 1990
	Week Ending February 3, 1990	February 9, 1990
	Week Ending February 10, 1990	February 16, 1990
	Week Ending February 17, 1990	February 22, 1990
Steel, Shipments of Rolled	December 1989	February 19, 1990
Steel Wire and Specified Wire Products	December 1989	February 7, 1990
Sugar Sales	January 1990	February 9, 1990
Sweater Industry	1987 Census of Manufactures	February 15, 1990
Taverns, Caterers and Restaurants	December 1989	February 14, 1990
Textile Materials Industry, Hygiene Products of	1987 Census of Manufactures	February 2, 1990
Tobacco Products	January 1990	February 19, 1990
Trade, Preliminary Statement of Canadian International (H.S. Based)	December 1989	February 16, 1990
Transportation, Water	1988	February 8, 1990
Travel Account, International	Fourth Quarter and Annual 1989	February 23, 1990
Travel Between Canada and Other Countries	December and Annual 1989	February 9, 1990
Travel-log - Touriscope	Winter 1990 Issue	February 12, 1990
Trucking, For-hire, Canada - U.S.	1987	February 21, 1990
Trusted Pension Funds	Third Quarter 1989	February 16, 1990
Unemployment Insurance Statistics	December 1989	February 28, 1990
Urban Transit and Passenger Bus Statistics	December 1989	February 12, 1990
Vegetable and Fruit Industry, Canned and Preserved	1987 Census of Manufactures	February 20, 1990
Vegetables and Fruits, Processed	November 1989	February 6, 1990
Waferboard and Hardboard, Particleboard	December 1989	February 12, 1990
Wage and Salary Earners - Canada and Provinces	1987	February 13, 1990
Wholesale Trade	December 1989	February 23, 1990
Women in Canada - A Statistical Report	1970-88	February 19, 1990
Women's Blouse and Shirt Industry	1987 Census of Manufactures	February 20, 1990
Women's Clothing Contractors Industry	1987 Census of Manufactures	February 20, 1990
Women's Dress Industry	1987 Census of Manufactures	February 15, 1990
Women's Sportswear Industry	1987 Census of Manufactures	February 23, 1990
Wood Residue Statistics, Pulpwood and	December 1989	February 7, 1990
Yarn and Woven Cloth Industry, Other Spun	1987 Census of Manufactures	February 15, 1990

Statistics Canada Library
Bibliothèque Statistique Canada



1010022931