



The Daily

Statistics Canada

Wednesday, March 28, 1990

For release at 10:00 a.m.

MAJOR RELEASES

- Unemployment Insurance Statistics, January 1990** 3
 The number of beneficiaries (adjusted for seasonal variations) who received regular benefits remained unchanged at 900,000 in January.
- Quarterly Report on Energy Supply-Demand in Canada, Third Quarter 1989** 5
 Canadian production of primary energy in the third quarter 1989 increased 0.6% over the corresponding quarter in 1988.

DATA AVAILABILITY ANNOUNCEMENTS

- | | |
|------------------------------------|---|
| Canadian Software Statistics, 1988 | 6 |
| Gypsum Products, February 1990 | 6 |

**NOT FOR LOAN
NE S'EMPRUNTE PAS**

STATISTICS CANADA STATISTIQUE CANADA

MAR 28 1990

LIBRARY
BIBLIOTHÈQUE

(Continued on page 2.)

The Input-Output Structure of the Canadian Economy, 1986

The publications *The Input-Output Structure of the Canadian Economy, 1986* (15-201, \$40) and *The Input-Output Structure of the Canadian Economy in Constant Prices, 1986* (15-202, \$40) are now available.

A comprehensive description of all commodity taxes, including Federal Sales Tax that is a precursor to the anticipated Goods and Services Tax, is provided in the feature article in *The Input-Output Structure of the Canadian Economy* (15-201). The price index for truck transport in the Canadian Input-Output Accounts is discussed in the feature article contained in *The Input-Output Structure of the Canadian Economy in Constant Prices* (15-202).

The information published in these two publications will henceforth be amalgamated into Catalogue 15-201.



Statistics
Canada

Statistique
Canada

Canada

DATA AVAILABILITY ANNOUNCEMENTS - Concluded

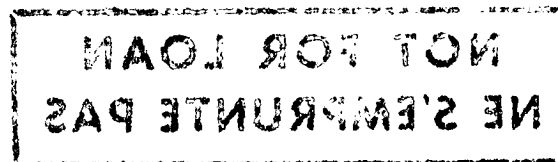
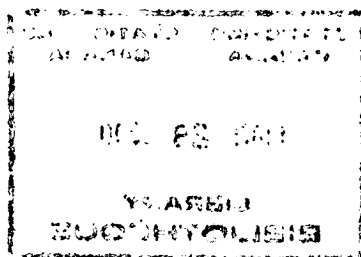
Deliveries of Major Grains, January 1990	6
Telecommunications Statistics, Fourth Quarter 1989	7
Residential Care Facilities, 1987-88	7
Motor Carriers of Freight - Quarterly Survey, Fourth Quarter 1989	7

PUBLICATIONS RELEASED

8

MAJOR RELEASE DATES: APRIL 1990

9



MAJOR RELEASES

Unemployment Insurance Statistics

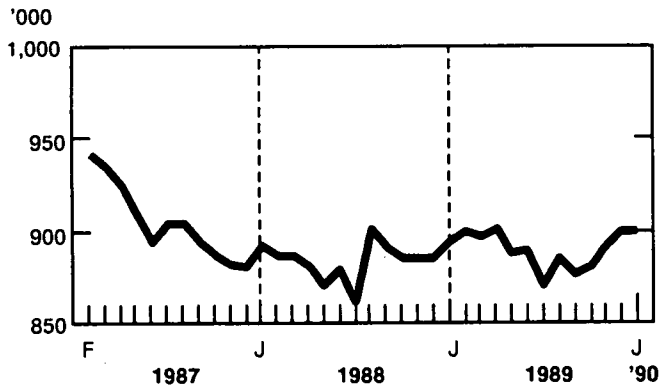
January 1990

Seasonally Adjusted

- For the week ended January 20, 1990, preliminary estimates show that the number of beneficiaries¹ receiving regular unemployment insurance benefits totalled 900,000, unchanged from the preceding month.
- Between December 1989 and January 1990, the seasonally adjusted number of beneficiaries receiving regular benefits increased 8.7% in Ontario and 1.3% in Newfoundland. The number decreased 4.8% in Saskatchewan, 4.3% in Alberta, 4.1% in Manitoba, 3.3% in the Yukon, and 2.5% in both British Columbia and the Northwest Territories. Smaller decreases were observed in New Brunswick and Prince Edward Island (-1.5%), Nova Scotia (-1.0%), and Quebec (-0.9%).

Beneficiaries Receiving Regular Unemployment Insurance Benefits, Canada

Seasonally Adjusted



- In January 1990, total benefit payments, adjusted for seasonal variations and the number of working days, decreased 5.2% from the preceding month, to \$980 million. The number of benefit weeks decreased 6.9% to 4.3 million.

Unadjusted

- In January 1990, the total number of beneficiaries¹ (including all persons qualifying for regular and special unemployment insurance benefits) stood at 1,233,000, unchanged from the same month a year ago. For the same period, the number of male beneficiaries increased 1.6% to 726,000, while the number of female beneficiaries declined 2.3% to 507,000.
- Benefits paid during January 1990 totalled \$1,286 million², up 9.0% over January 1989. During this period, the average weekly payment increased 7.2% to \$232.07, while the number of benefit weeks increased 1.8% to 5.5 million.
- A total of 389,000 claims² (applications) for unemployment insurance benefits were received in January 1990, up 14.6% over the same month a year earlier. This increase is mainly the result of a greater number of working days in January 1990 than there were in the same month last year.

¹ The number of beneficiaries represents a count of persons who qualified for unemployment insurance benefits during a specific week of the reference month.

² Benefits paid, number of benefit weeks, and number of claims received relate to a complete calendar month, and these data are usually final estimates when released. It should also be noted that these data are affected by the number of working days available during the reference month to process claims and to pay benefits. In making short-term comparisons it is not uncommon to observe different trends between these data and the number of beneficiaries.

Available on CANSIM: matrices 26 (series 1.6), 5700-5717, 5735, and 5736. The last two matrices contain monthly data, starting in January 1984, on beneficiaries by sex and Census Metropolitan Area (CMA) or Census Agglomeration (CA).

The January 1990 issue of *Unemployment Insurance Statistics* (73-001, \$13.70/\$137), containing data for November and December 1989, and January 1990 will be available in April. See "How to Order Publications".

Unpublished beneficiaries data, including statistics for small areas defined by data users, are also available on request. For special tabulations or further information, contact André Picard (613-951-4045) or Horst Stiebert (613-951-4044), Labour Division.

Unemployment Insurance Statistics

	January 1990	December 1989	November 1989	January 1989	January 1990/ December 1989
	Seasonally Adjusted				% change
Benefits					
Amount paid (\$000)	980,380	1,034,554	970,293	933,191	-5.2
Weeks of benefit (000)	4,325	4,645	4,409	4,393	-6.9
Beneficiaries -					
Regular benefit (000)	900 ^p	900 ^p	891 ^r	895 ^r	0.0
					January 1990/ January 1989
	Unadjusted				% change
Benefits					
Amount paid (\$000)	1,286,475	1,010,677	862,239	1,179,714	9.0
Weeks of benefit (000)	5,544	4,453	3,938	5,447	1.8
Average weekly benefit (\$)	232.07	226.98	218.95	216.58	7.2
Claims received (000)	389	333	366	339	14.6
Beneficiaries (000)					
Total	1,233 ^p	1,085 ^p	982 ^r	1,233 ^r	0.0
Regular benefits	1,077 ^p	928 ^p	824 ^r	1,083 ^r	-0.5

^p Preliminary figures

^r Revised figures

Quarterly Report on Energy Supply-Demand in Canada

Third Quarter

1989 Highlights

- Canadian production of primary energy in the third quarter of 1989 reached 2 668 petajoules (PJ)¹, up 15 PJ (0.6%) over the corresponding quarter in 1988. The composition of the production changed between these corresponding quarters with the importance of natural gas and its by-products increasing from 36.1% to 38.4%, and with coal increasing from 14.7% to 15.2%. Offsetting these increases were declines in the importance of crude oil, which fell from 37.2% to 35.3%, and electricity, from 11.7% to 10.9%.
- Imports of energy products during the third quarter of 1989 reached 551 PJ, up 18 PJ (3.4%) over the same period a year earlier. Within this amount, crude oil increased 20 PJ (7.6%) and coal declined 31 PJ (19.0%). For the first nine months of the year, imports of crude oil were up 53 PJ (7.0%) to 813 PJ, while coal imports declined 31 PJ (9.7%), to 294 PJ.
- Energy exports for the quarter were down 10 PJ (0.9%) from the level a year earlier, to 1 106 PJ. Declines were reported for: crude oil, down 31 PJ to 358 PJ; coal, down 4 PJ to 227 PJ; and electricity, down 10 PJ to 26 PJ. Exports of natural gas and its by-products were up 38 PJ, to 374 PJ. For the first nine months of 1989, crude oil exports were 1 090 PJ, a decline of 107 PJ, or 8.9%, from the level a year earlier. Natural gas exports for the same period were 1 159 PJ, or 8.1% higher than in the first nine months of 1988.
- The amount of energy available to Canadians to meet the final energy demands during the third quarter was 1 350 PJ, an increase of 13 PJ (0.9%) over a year earlier. Per capita consumption (based on population estimates at the beginning of the quarter) stood at 75 gigajoules (equivalent to approximately 2 160 litres of motor gasoline), 1.4% above that of a year earlier.
- In the third quarter, industrial energy demand, including that used for non-energy purposes, declined 2 PJ, or 0.3% from the 1988 level, to 670 PJ. For the same period, farm and residential use, excluding motor gasoline and diesel fuels, decreased 1 PJ, or 0.8%, to 157 PJ. Commercial and government use, excluding aviation fuels, increased 4 PJ (2.1%), to 178 PJ. In the transportation sector, including all aviation fuel use, an increase of 9 PJ, or 1.9%, was recorded, bringing the total for transportation use to 504 PJ.

Available on CANSIM: matrices 7976-8001.

The third quarter 1989 issue of *Quarterly Report on Energy Supply-Demand in Canada* (57-003, \$30.25/\$121) will be available the third week of April. See "How to Order Publications".

For further information on this release, contact Don Wilson (613-951-3566), Energy Section, Industry Division. ■

¹ To give the reader an idea of what is meant by energy expressed in these terms, 1 PJ is equal to the energy required to drive 13,800 cars for a year, if each car used 40 litres of gasoline a week.

DATA AVAILABILITY ANNOUNCEMENTS

Canadian Software Statistics 1988

Highlights

- Total software sales in 1988 were \$2 billion. Packaged software accounted for 71% of this total.
- Software produced outside of Canada comprised over 54% of packaged software sales. Three-quarters of this foreign-produced software came from parents of subsidiaries operating in Canada.
- Software imports were \$399 million, while exports were \$306 million. However, since an unknown amount of imported software bypasses distribution channels, the former figure is an under-estimate of total software imports.
- Sales of software for mini-computers and mainframes comprised 57% of software revenues.
- Software accounted for 20% of revenues of firms surveyed.

These results come from a special study of Canadian software production and distribution in 1988. The survey covered firms whose major activity was the production of software and computer services and wholesalers of computer equipment and software. While these results are not exhaustive, the most important industries earning revenues from software sales were covered.

The results will be released by the end of March in *Service Industries Bulletin* (63-015, Vol. 1, No. 3, \$6.75/\$40.50). This bulletin includes tables showing source and disposition of software by type of firm, by geographic region (according to province of head office), and by size of software sales. Four types of firm are distinguished: Canadian subsidiaries of foreign software producers; Canadian software producers; computer equipment manufacturers (or their Canadian subsidiaries); and other wholesalers. Distribution flows from the four groups of supplying firms to six purchasing sectors are described.

For further information on this release, contact Craig Gaston (613-951-2196) or Ed Therriault (613-951-3491), Services, Science and Technology Division. ■

Gypsum Products February 1990

Manufacturers shipped 20 473 thousand square metres of plain gypsum wallboard in February 1990, down 7.2% from the 22 071 thousand square metres shipped in February 1989 and down 4.8% from the 21 508 thousand square metres shipped in January 1990. Year-to-date shipments were 41 981 thousand square metres, down 6.0% from January-February 1989.

Available on CANSIM: matrices 39 and 122 (series 11).

The February 1990 issue of *Gypsum Products* (44-003, \$4.70/\$47) will be available at a later date. See "How to Order Publications".

For further information on this release, contact Roland Joubert (613-951-3527), Industry Division. ■

Deliveries of Major Grains January 1990

Producer deliveries of major grains by prairie farmers showed a significant increase from January 1989, except in the case of oats, where marketings decreased significantly. Deliveries for January 1989 and January 1990 were as follows (in thousand tonnes):

	1989	1990
• Wheat (excluding durum)	553.4	1 590.5
• Durum wheat	40.9	167.1
• Total wheat	594.2	1 757.6
• Oats	107.9	58.2
• Barley	364.6	681.6
• Rye	5.2	30.8
• Flaxseed	20.4	23.9
• Canola	167.7	294.6
• Total	1 260.0	2 846.7

Available on CANSIM: matrices 976-981.

The January 1990 issue of *Cereals and Oilseeds Review* (22-007, \$13.10/\$131) is scheduled for release in April. See "How to Order Publications".

For further information on this release, contact Anthony Dupuis (613-951-3871), Agriculture Division. ■

Telecommunications Statistics

Fourth Quarter 1989

Telelobe Canada and CNCP Telecommunications reported quarterly revenue of \$147.2 million in the fourth quarter of 1989, up 21.4% over the same period in 1988. Operating expenses were \$139.8 million, up 9.1% over the fourth quarter of 1988. Net operating revenue was \$7.4 million, compared to -\$6.9 million in the fourth quarter of 1988.

The fourth quarter 1989 issue of the *Communications Service Bulletin, Telecommunications Statistics* (56-001, \$7.80/\$47) is scheduled for release the week of April 9. See "How to Order Publications".

For more information on this release, contact J.R. Slattery (613-951-2205), Services Division. ■

Residential Care Facilities

1987-88

Statistics and indicators from the Annual Survey of Residential Care Facilities are now available for the 1987-88 reporting year.

For this survey, residential care facilities include all institutions with a minimum of four beds and offering the services of nursing homes, homes for the aged, physically handicapped or disabled, emotionally disturbed children, alcohol and drug addicts, delinquents, transients, transition homes and children's facilities.

Information collected relates to the residents, personnel and finances of these facilities. The data are compiled by provinces, principal characteristic of the predominant group of residents and bed size.

For more information on this release, contact Judith Dowler (613-951-1643, Health Care Section, Canadian Centre for Health Information. ■

Motor Carriers of Freight - Quarterly Survey

Fourth Quarter 1989

The results of the Motor Carriers of Freight Quarterly Trucking Survey, covering the activities of the 40 largest carriers of the for-hire trucking industry in the fourth quarter of 1989, are now available.

For further information, contact Yasmin Sheikh (613-951-2518), Transportation Division. ■

**The
Daily**

Statistics Canada's Official Release Bulletin for Statistical Information

Catalogue 11-001E. Price: Canada \$105/year; other countries \$126/year

Published by the Communications Division
Statistics Canada, 3-N, R.H. Coats Bldg., Ottawa K1A 0T6.

Senior Editor: Greg Thomson (613-951-1116)
Editor: Bonnie Williams (613-951-1103)

Published under the authority of the Minister of Industry, Science and Technology. All rights reserved. No part of this publication may be reproduced, stored in a retrieval system or transmitted in any form or by any means, electronic, mechanical, photocopying, recording or otherwise without prior written permission of the Minister of Supply and Services Canada.

PUBLICATIONS RELEASED

The Input-Output Structure of the Canadian Economy, 1986.

Catalogue number 15-201

(Canada: \$40; Other Countries: \$42).

The Input-Output Structure of the Canadian Economy in Constant Prices, 1986.

Catalogue number 15-202

(Canada: \$40; Other Countries: \$42).

The Sugar Situation, February 1990.

Catalogue number 32-013

(Canada: \$4.70/\$47; Other Countries: \$5.60/\$56).

Fruit and Vegetable Preservation Service Bulletin, Vol. 18, No. 16: Pack of Processed Lima Beans, 1989.

Catalogue number 32-023

(Canada: \$7.40/\$121; Other Countries: \$8.90/\$145).

Production, Shipments and Stocks on Hand of Sawmills East of the Rockies (Excluding Newfoundland and Prince Edward Island), January 1990.

Catalogue number 35-002

(Canada: \$9.50/\$95; Other Countries: \$11.40/\$114).

Production, Shipments and Stocks on Hand of Sawmills in British Columbia, January 1990.

Catalogue number 35-003

(Canada: \$6.80/\$68; Other Countries: \$8.20/\$82).

Corrugated Boxes and Wrappers, February 1990.

Catalogue number 36-004

(Canada: \$4.70/\$47; Other Countries: \$5.60/\$56).

Production, Sales and Stocks of Major Appliances, February 1990.

Catalogue number 43-010

(Canada: \$4.70/\$47; Other Countries: \$5.60/\$56).

Mineral Wool Including Fibrous Glass Insulation, February 1990.

Catalogue number 44-004

(Canada: \$4.70/\$47; Other Countries: \$5.60/\$56).

Touriscope - International Travel, January 1990.

Catalogue number 66-001P

(Canada: \$5.80/\$58; Other Countries: \$6.40/\$64).

How to Order Publications

Statistics Canada publications may be purchased by mail order from Publication Sales, Room 1710, Main Building, Statistics Canada, Ottawa K1A 0T6 or phone 613-951-7277.

Please enclose cheque or money order payable to the Receiver General for Canada/Publications and provide full information on publications required (catalogue number, title, issue).

Publications may also be ordered through Statistics Canada's offices in St. John's, Halifax, Montreal, Ottawa, Toronto, Winnipeg, Regina, Edmonton, Calgary and Vancouver, or from authorized bookstore agents or other booksellers.

A national toll-free telephone order service is now in operation at Statistics Canada. The toll-free line (1-800-267-6677) can be used by Canadian customers for the ordering of Statistics Canada products and services.

MAJOR RELEASE DATES: APRIL 1990

(Release dates are subject to change)

Anticipated date(s) of release	Title	Reference period
April		
3-4	Canadian Composite Leading Indicator	January 1990
3-4	Retail Trade	January 1990
3-4	Wholesale Trade	January 1990
4	Building Permits	December 1989
4	Help-wanted Index	March 1990
6	Labour Force Survey	March 1990
6	Estimates of Labour Income	January 1990
9	New Motor Vehicle Sales	February 1990
9	New Housing Price Index	February 1990
10	Department Store Sales by Province and Metropolitan Area	February 1990
11	Farm Product Price Index	February 1990
12	Travel Between Canada and Other Countries	February 1990
18	Preliminary Statement of Canadian International Merchandise Trade	February 1990
20	The Consumer Price Index	March 1990
24	Monthly Survey of Manufacturing	February 1990
25	Department Store Sales and Stocks	February 1990
25	Unemployment Insurance Statistics	February 1990
26	Security Transactions with Non-residents	February 1990
27-May 2	Retail Trade	February 1990
27-May 2	Wholesale Trade	February 1990
27	Field Crop Reporting Series - No. 3: Stocks of Canadian Grain at March 31	
30	Gross Domestic Product at Factor Cost by Industry	February 1990
30	Industrial Product Price Index	March 1990
30	Raw Materials Price Index	March 1990
30	Employment, Earnings and Hours	February 1990
30	Sales of Refined Petroleum Products	March 1990
30	Crude Petroleum and Natural Gas	January 1990
30	Major Release Dates	May 1990

The May 1990 release schedule will be published on April 30, 1990. Users note: This schedule can be retrieved from CANSIM by the command DATES. Contact Greg Thomson (613-951-1116), Communications Division.

Statistics Canada Library
Bibliothèque Statistique Canada



1010028921