



# The Daily

Statistics Canada

Monday, May 7, 1990

For release at 10:00 a.m.

---

## MAJOR RELEASES

---

- **Composite Leading Indicator, February 1990** 2  
The Canadian Leading Indicator showed no growth in February.
  - **Crude Oil and Natural Gas, January 1990** 4  
Marketable production of natural gas increased for the twelfth consecutive month, rising 4.3% over January 1989.
- 

## DATA AVAILABILITY ANNOUNCEMENT

---

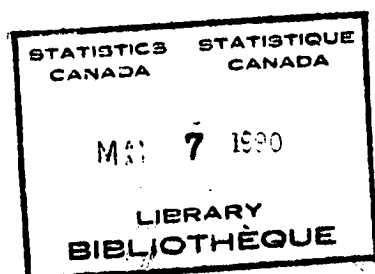
Oil Pipeline Transport, February 1990 5

---

**PUBLICATIONS RELEASED** 6

---

**NOT FOR LOAN  
NE S'EMPRUNTE PAS**



Statistics  
Canada

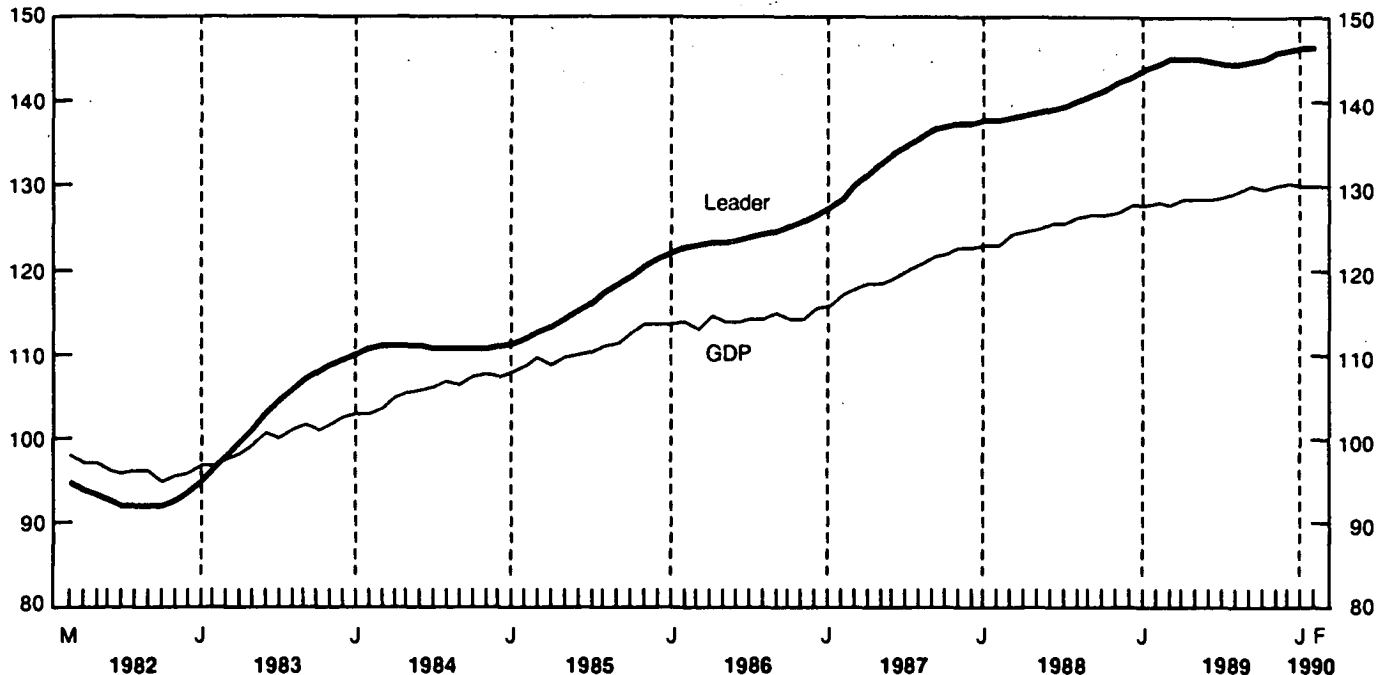
Statistique  
Canada

Canada

## MAJOR RELEASES

### Composite Leading Indicator and GDP

1981 = 100



The financial market indicators both declined in February. The Toronto stock exchange index fell by 1.2%, and the real money supply by 0.1%.

For more information on the economy, order the May issue of *Canadian Economic Observer* (11-010, \$21/\$210), available the week of May 21, 1990. See "How to Order Publications".

**Available on CANSIM: matrix 191.**

For further information on this release, or about the next release dates, contact F. Roy-Mayrand (613-951-3627), International and Financial Economics Division.

**Canadian Leading Indicator**

	Percentage Change			Level	
	December	January	February	January	February
<b>Composite Leading Indicator (1981 = 100)</b>					
Smoothed	0.3	0.1	0.0	146.3	146.3
Unsmoothed	0.3	-1.3	-0.2	145.3	145.0
<b>Retail Trade</b>					
Furniture and appliance sales	0.2	0.6	0.4	1,110 <sup>4</sup>	1,115 <sup>4</sup>
Other durable goods sales	0.5	1.1	0.8	3,892 <sup>4</sup>	3,921 <sup>4</sup>
<b>House Spending Index<sup>1</sup></b>	2.1	1.5	0.6	148.2	149.1
<b>Manufacturing</b>					
New orders - durable	0.0	-1.2	-1.6	10,188 <sup>4</sup>	10,029 <sup>4</sup>
Shipment-to-inventory ratio - (finished goods <sup>2</sup> )	0.00	-0.01	-0.02	1.46	1.44
Average workweek (hours)	0.0	0.0	-0.2	38.6	38.5
Business and personal service employment (thousands)	0.3	0.5	0.7	1,737	1,750
<b>United States</b>					
Composite Leading Index (1967 = 100)	0.1	0.1	0.0	193.5	193.5
<b>TSE300 Stock Price Index (1975 = 1000)</b>	0.5	-0.6	-1.2	3,945	3,897
<b>Money Supply (M1) (\$1981)<sup>3</sup></b>	-0.1	-0.2	-0.1	25,800 <sup>4</sup>	25,746 <sup>4</sup>

<sup>1</sup> Composite index of housing starts (units) and house sales (MLS).

<sup>2</sup> Difference from previous month.

<sup>3</sup> Deflated by the consumer price index for all items.

<sup>4</sup> Millions of 1981 dollars.

## Crude Oil and Natural Gas

January 1990

Preliminary figures for January 1990 indicate that marketable production of natural gas, at 9.3 billion cubic metres, recorded a twelfth consecutive monthly gain, rising 4.3% over January 1989. Exports posted a gain of 13.3% over January of last year, while domestic sales of natural gas were up 2.3% over the same period.

Production of crude oil and equivalent hydrocarbons in January 1990 amounted to 7.8 million cubic metres, a decrease of 7.2% from January 1989. This represents a twelfth consecutive decline. Exports

of crude oil continued to decline, dropping 11.1% below January 1989. Imports of crude oil fell 10.7% during the same period. Deliveries of crude oil to Canadian refineries were down 3.5% from the same month last year.

**Available on CANSIM: matrices 127 and 128.**

The January 1990 issue of *Crude Oil and Natural Gas Production* (26-006, \$10/\$100) will be available the third week of May. See "How to Order Publications".

For further information on this release, contact Gerard O'Connor (613-951-3562), Energy Section, Industry Division.

## Crude Oil and Natural Gas

	January 1990	% Change from January 1989
(thousands of cubic metres)		
<b>Crude Oil and Equivalent</b>		
Production	7 780.6	-7.2
Exports	2 974.6	-11.1
Imports	2 343.8	-10.7
Refinery receipts	7 489.7	-3.5
(millions of cubic metres)		
<b>Natural gas</b>		
Marketable production	9 267.6	4.3
Exports	3 653.4	13.3
Canadian sales	6 891.3	2.3

---

## DATA AVAILABILITY ANNOUNCEMENT

---

### Oil Pipeline Transport

February 1990

In February, net receipts of crude oil and refined petroleum products into Canadian pipelines decreased 2.4% from the same period last year to 13 155 560 cubic metres (m<sup>3</sup>). Year-to-date receipts, now at 27 992 486 m<sup>3</sup>, are down 0.5% from 1989.

Pipeline exports of crude oil decreased 10.2% compared to February 1989, while pipeline imports rose 21.4% for the same period. On a cumulative basis, exports in 1990 are now down 13.2% from 1989 levels, while imports are up by 40.9%.

Deliveries of crude oil by pipeline to Canadian refineries this month rose 1.3% from 1989, while deliveries of liquid petroleum gases and refined petroleum products decreased 9.8%.

**Available on CANSIM: matrix 181.**

The February 1990 issue of *Oil Pipeline Transport* (55-001, \$9.50/\$95) will be available the last week of May. See "How to Order Publications".

For further information on this release, contact G. O'Connor (613-951-3562), Energy Section, Industry Division. ■

**The  
Daily**

### Statistics Canada's Official Release Bulletin for Statistical Information

Catalogue 11-001E. Price: Canada: \$120/year; US\$144/year; Other countries: US\$168/year

Published by the Communications Division  
Statistics Canada, 3-N, R.H. Coats Bldg., Ottawa K1A 0T6.

Senior Editor: Greg Thomson (613-951-1116)  
Editor: Bonnie Williams (613-951-1103)

Published under the authority of the Minister of Industry, Science and Technology. All rights reserved. No part of this publication may be reproduced, stored in a retrieval system or transmitted in any form or by any means, electronic, mechanical, photocopying, recording or otherwise without prior written permission of the Minister of Supply and Services Canada.



1010036227

---

## PUBLICATIONS RELEASED

---

*Prices for publications in the United States and "Other Countries" are expressed in \$U.S.*

**Shipments of Solid Fuel Burning Heating Products**, Quarter Ended March 1990.

**Catalogue number 25-002**

(Canada: \$4.75/\$19; U.S.: \$5.75/\$23; Other Countries: \$6.75/\$27).

**Production and Inventories of Process Cheese and Instant Skim Milk Powder**, March 1990.

**Catalogue number 32-024**

(Canada: \$5/\$50; U.S.: \$6/\$60; Other Countries: \$7/\$70).

**Rigid Insulating Board (Wood Fibre Products)**, March 1990.

**Catalogue number 36-002**

(Canada: \$5/\$50; U.S.: \$6/\$60; Other Countries: \$7/\$70).

**Cement**, March 1990.

**Catalogue number 44-001**

(Canada: \$5/\$50; U.S.: \$6/\$60; Other Countries: \$7/\$70).

**Gypsum Products**, March 1990.

**Catalogue number 44-003**

(Canada: \$5/\$50; U.S.: \$6/\$60; Other Countries: \$7/\$70).

**Industry Price Indexes**, February 1990.

**Catalogue number 62-011**

(Canada: \$17.30/\$173; Other Countries: \$20.80/\$208).

---

### How to Order Publications

*Statistics Canada publications may be purchased by mail order from Publication Sales, Room 1710, Main Building, Statistics Canada, Ottawa K1A 0T6 or phone 613-951-7277.*

*Please enclose cheque or money order payable to the Receiver General for Canada/Publications and provide full information on publications required (catalogue number, title, issue).*

*Publications may also be ordered through Statistics Canada's offices in St. John's, Halifax, Montreal, Ottawa, Toronto, Winnipeg, Regina, Edmonton, Calgary and Vancouver, or from authorized bookstore agents or other booksellers.*

*A national toll-free telephone order service is now in operation at Statistics Canada. The toll-free line (1-800-267-6677) can be used by Canadian customers for the ordering of Statistics Canada products and services.*