



The Daily

Statistics Canada

Friday, June 8, 1990

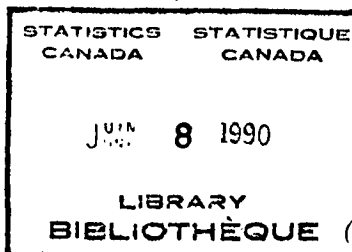
For release at 10:00 a.m.

MAJOR RELEASES

- **Labour Force Survey, May 1990** 3
The unemployment rate jumped 0.4 to 7.6.
- **Composite Leading Indicator, March 1990** 5
The composite leading index fell by 0.1% in March, the second consecutive drop.
- **Travel Between Canada and Other Countries, April 1990** 7
The number of one or more nights trips to Canada by non-residents reached a record level for the month, while travel abroad by Canadian residents continued to grow.

DATA AVAILABILITY ANNOUNCEMENTS

Railway Carloadings, 10-day Period Ending May 31, 1990	9
Steel Primary Forms (Steel Ingots), Week Ending June 2, 1990	9
Shipments of Rolled Steel, April 1990	9
Steel, Primary Forms, April 1990	9
Passenger Bus and Urban Transit Statistics, April 1990	9
Pulpwood and Wood Residue Statistics, April 1990	10
Oils and Fats, April 1990	10
1988 Annual Survey of Manufactures:	
Particleboard Industry	10
Waferboard Industry	11
Asphalt Roofing Industry	11
Steel Foundries Industry	11
Other Transportation Equipment Industry	11



(Continued on page 2)

**NOT FOR LOAN
NE S'EMPRUNTE PAS**



Statistics
Canada

Statistique
Canada

Canada

DATA AVAILABILITY ANNOUNCEMENTS – Concluded

Battery Industry	11
Clay Products (From Domestic Clay) Industry	11
Industrial Organic Chemical Industries, n.e.c.	11

PUBLICATIONS RELEASED

MAJOR RELEASE DATES: Week of June 11-15, 1990

MAJOR RELEASES

Labour Force Survey

May 1990

Overview

Estimates from Statistics Canada's Labour Force Survey show a 45,000 decline in the employment level and an increase of 49,000 in the number of persons unemployed. The unemployment rate jumped 0.4 to 7.6, returning to the average rate noted during the last two quarters.

For the week ending May 19, 1990 the seasonally adjusted level of employment was estimated at 12,604,000, down 45,000 from April. This month's fall in employment was concentrated among men (-32,000). The employment/population ratio declined by 0.3 to 61.8.

- Employment continued to decline among persons aged 15 to 24 (-20,000). Following several months of growth, employment also declined for persons aged 25 and over (-25,000).
- Full-time employment fell by 37,000, with the decline noted mostly among men (-22,000). The decrease in part-time employment (-12,000) was due to a decline noted among women.
- Manufacturing employment fell sharply for the third consecutive month (-43,000). Employment declined by 11,000 in agriculture and by 17,000 in public administration after having posted gains of similar magnitudes in April. There was little or no change noted in the other industries.
- Employment decreased by 44,000 in Ontario, by 17,000 in Alberta and by 6,000 in Nova Scotia while it rose by 13,000 in British Columbia. There was little or no change in the remaining provinces.

Unemployment and Participation Rate

In May 1990, the seasonally adjusted estimate of unemployment increased by 49,000 to 1,036,000 and the unemployment rate advanced 0.4 to 7.6, similar to the rates noted at the beginning of the year. The overall size of the labour force was little changed and the participation rate edged down to 66.9 (-0.1).

- The rise in unemployment was evenly distributed between men and women and was concentrated

among adults. The unemployment rate advanced 0.4 to 6.6 for persons aged 25 and over and it rose to 12.0 (+0.2) among persons aged 15 to 24.

- The participation rate declined by 0.4 to 68.8 for persons aged 15 to 24 while it edged up to 66.5 for those aged 25 and over.
- The seasonally adjusted level of unemployment rose by an estimated 32,000 in Ontario and by 7,000 in Nova Scotia. It rose moderately in Newfoundland and Manitoba while it declined slightly in New Brunswick and British Columbia. There was little or no change in the remaining provinces.
- The unemployment rate rose by 1.2 in Newfoundland (17.6), 1.7 in Nova Scotia (11.2), 0.6 in Ontario (5.8), 0.9 in Manitoba (7.3) and by 0.4 in Alberta (6.9). The rate edged up in Québec (9.3) and Saskatchewan (6.8) while it declined by 1.0 in Prince Edward Island (14.5) and New Brunswick (11.0) and by 0.4 in British Columbia (7.6).

Changes since May 1989 (Unadjusted)

- Employment rose by an estimated 140,000 (+1.1%) to 12,717,000. The year-over-year growth in employment was the result of gains noted among women (+2.8%).
- Full-time employment rose by 84,000 (+0.8%) and part-time employment by 56,000 (+3.0%).
- Employment grew by 2.9% in the service-producing industries as the result of gains noted in trade (+3.2%) and in community business and personal services (+5.2%). Employment in the goods-producing industries decreased by 3.0% due to a strong decline in manufacturing (-7.8%).
- The estimated number of unemployed increased by 13,000 (+1.3%) to 1,040,000.
- The unemployment rate increased slightly to 7.6 (+0.1) from the rate of a year ago.
- The participation rate and employment/population ratio declined by 0.2, to 67.5 and 62.4, respectively.

Student Data

From May to September inclusive, data on the participation of students in the labour market are collected through the Labour Force Survey. Persons aged 15 to 24 who were attending school full-time in March 1990 are asked additional questions. The information is compiled for two categories of students: those who plan to return to school in the fall of 1990; those who do not plan to return to school at that time, or are uncertain of their intentions.

Returning students:

- Employment among returning students, unadjusted for seasonal variations, was estimated at 827,000, a decline of 18,000 from the previous year. The employment/population ratio decreased by 1.0 to 49.2.
- The overall participation rate for returning students dropped to 55.6 (-1.3), with the rate among those aged 20 to 24 declining to 72.4 (-3.7).

- The unemployment rate was estimated at 11.4 in May, a decline of 0.4 from the rate noted last year. The rate fell by 0.6 among students aged 20 to 24 and it declined by 0.4 for those aged 15 to 19.

Other students:

- Employment among this group of students was estimated at 147,000 in May a decline of 46,000 from last year and the employment/population ratio tumbled 8.9 to 49.8.
- The unemployment rate was estimated at 20.0 in May 1990, a surge of 8.0 from the rate of last year. The participation rate for this group of students fell by 4.4 to 62.3.

Available on CANSIM: matrices 2074-2075, 2078-2099, 2101-2107 and table 00799999.

Order the May 1990 issue of *The Labour Force* (71-001, \$17.90/\$179), available the third week of June 1990, or contact Ken Bennett (613-951-4720), Household Surveys Division.

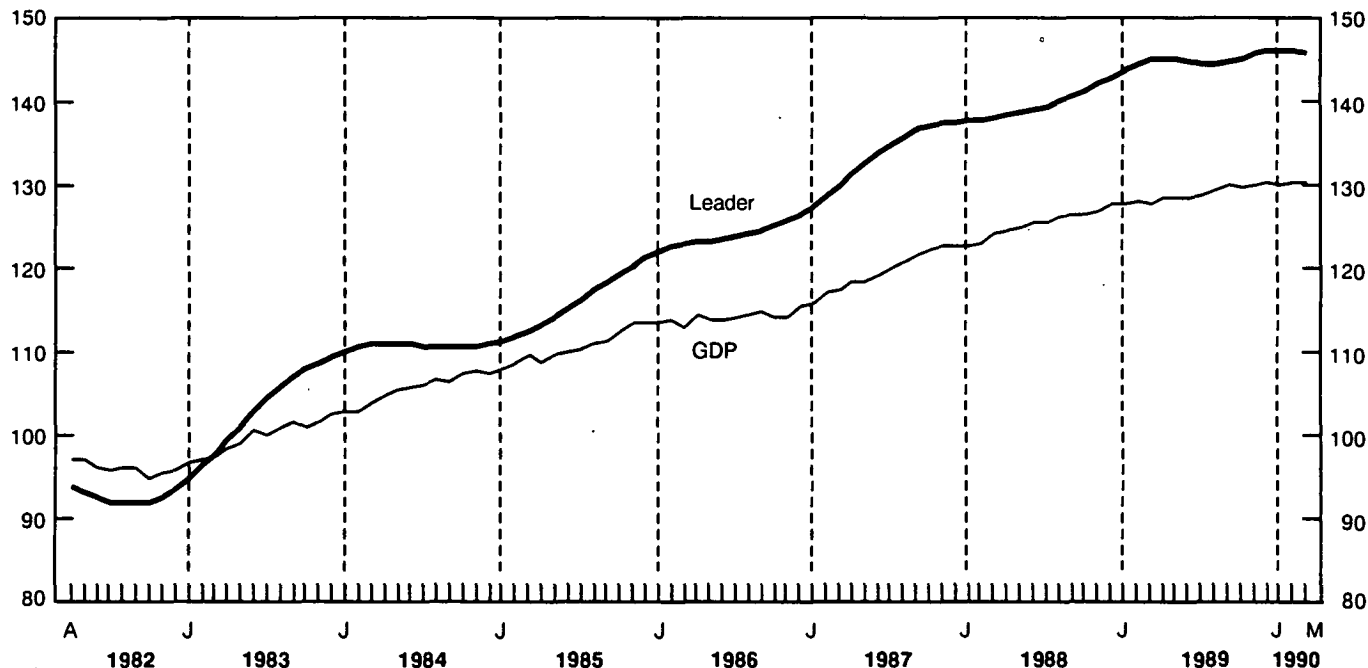
For summary information, available on the day of release, order *Labour Force Information* (71-001P, \$6.30/\$63).

Labour Force Characteristics, Canada

	May 1990	April 1990	May 1989
Seasonally Adjusted			
Labour Force (,000)	13,640	13,636	13,480
Employment (,000)	12,604	12,649	12,450
Unemployment (,000)	1,036	987	1,030
Unemployment Rate (%)	7.6	7.2	7.6
Participation Rate (%)	66.9	67.0	67.0
Employment/Population Ratio (%)	61.8	62.1	61.9
Unadjusted			
Labour Force (,000)	13,757	13,471	13,604
Employment (,000)	12,717	12,428	12,577
Unemployment (,000)	1,040	1,043	1,027
Unemployment Rate (%)	7.6	7.7	7.5
Participation Rate (%)	67.5	66.1	67.7
Employment/Population Ratio (%)	62.4	61.0	62.6

Composite Leading Indicator and GDP

1981 = 100



Composite Leading Indicator

March 1990

The composite leading index fell by 0.1% in March. The index had edged down in February, after posting marginal gains every month since last summer. In March, the house spending index joined five other components in posting declines. Manufacturing demand remained weak, despite some recovery in the auto industry. The declines in the financial market indicators deepened in the month. Overall, the recent movements in the index suggest that economic activity will remain weak in the next few months.

The performance of the components related to household demand was mixed. After a period of steady growth, the housing index dropped, as the downturn in house sales worsened. This index, which also includes housing starts, had grown rapidly at the turn of the year. Furniture and appliance sales, which tend to lag housing demand, posted a marked increase. Sales of other durable goods also

continued to grow rapidly, although sales fell sharply in April when the stimulus of rebates waned. The slackening of sales in April also followed a drop in consumer confidence in the first quarter, and a slowdown in paid employment and wages.

The indicators of manufacturing all declined in March, as they had in February. In particular, the trend of new orders for durable goods continued to weaken, as the recovery in autos was weak following a sharp drop in January. Auto sales remained slow in the United States. Shipments of non-durable goods continued to decline, and contributed to another drop in the ratio of shipments-to-stocks of finished goods. The average workweek continued to contract.

The United States leading indicator rose marginally in March, after no change in February, led by a rebound in orders for consumer goods. The unsmoothed index dipped in April, however, as orders declined again. This suggests that economic growth in the U.S. remains fragile, partly due to renewed weakness in auto production in April.

The financial market indicators both declined sharply in March. The Toronto stock exchange index fell by 1.6%, even as stock markets rose in the United States. The real money supply posted its largest decline since the slowdown in 1986.

Available on CANSIM: matrix 191.

For further information on this release, or about the next release dates, contact F. Roy-Mayrand (613-951-3627), International and Financial Economics Division.

For more information on the economy, order the June issue of *Canadian Economic Observer* (11-010, \$22/\$220), available the week of June 18. See "How to Order Publications".

Canadian Leading Indicators

	Percentage Change			Level	
	January	February	March	February	March
Composite Leading Indicator (1981 = 100)					
Smoothed	0.1	-0.1	-0.1	146.1	145.9
Unsmoothed	-1.7	0.0	0.1	144.9	145.1
Retail Trade					
Furniture and Appliance Sales	0.6	0.7	0.7	1,118 ⁴	1,126 ⁴
Other Durable Goods Sales	0.8	0.7	0.9	3,904 ⁴	3,938 ⁴
House Spending Index¹	1.5	0.4	-1.0	148.6	147.1
Manufacturing					
New Orders - Durable	-1.5	-2.2	-1.6	9,905 ⁴	9,749 ⁴
Shipment-to-inventory Ratio - (finished goods) ²	-0.01	-0.02	-0.01	1.44	1.43
Average Workweek (hours)	0.0	-0.2	-0.0	38.5	38.5
Business and Personal Employment (thousands)	0.5	0.7	0.7	1,750	1,762
United States Composite Leading Index (1967 = 100)	0.1	-0.1	0.1	193.5	193.6
TSE300 Stock Price Index (1975 = 1000)	-0.6	-1.2	-1.6	3,897	3,834
Money Supply (M1) (\$1981)³	-0.2	-0.1	-0.7	25,746 ⁴	25,567 ⁴

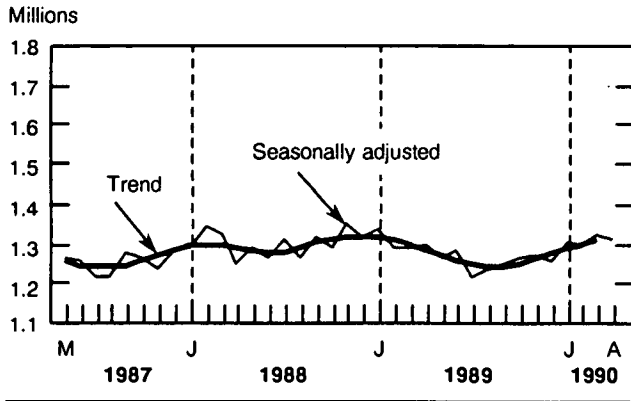
¹ Composite index of housing starts (units) and house sales (MLS).

² Difference from previous month.

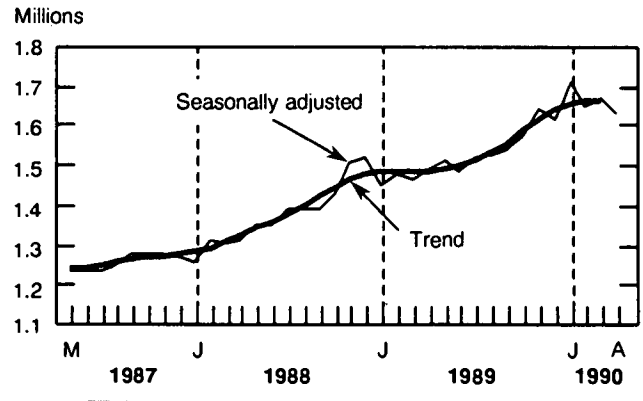
³ Deflated by the consumer price index for all items.

⁴ Million

Trips of One or More Nights to Canada by Non-residents



Trips of One or More Nights Abroad by Canadian Residents



Travel Between Canada and Other Countries

April 1990

Highlights

Unadjusted

- Preliminary estimates indicate that the number of non-resident visits of one or more nights to Canada totalled 850,600 in April. This represented an increase of 13.4% over April 1989, following a drop of 3.8% in March 1990. The occurrence of Easter in April this year instead of March, as in 1989, may have accounted for part of the changes.
- During the first four months of 1990, the volume of foreign overnight travel to Canada accounted for 2.6 million trips, 3.5% over the first four months of 1989, and a record level for the period.
- The number of overnight trips abroad by Canadian residents was 1,722,900 re-entries, a record number for the month and 14.8% above a year ago. In the first four months of 1990, trips to the United States increased at a stronger rate (13.7%), than visits to other countries (4.8%).

- During the first four months of the year, total trips to all foreign destinations by Canadian residents increased 16.5% above the same period in 1989. Same-day travel to the United States was 18.7% higher in the first four months of 1990, representing about 2.3 million more short visits than during January-April 1989.

Seasonally Adjusted

- On a seasonally adjusted basis, the April volume of foreign travellers to Canada on trips of one or more nights decreased 1.2% from the revised March level, as the number from the United States dropped, while those from overseas increased. This small drop has not affected the moderate upward trend in foreign overnight travel to Canada noted since the middle of 1989.
- Overnight international trips by Canadian residents were down 2.2% from the previous month, reflecting decreases in visits to both the United States and other countries in April 1990. The upward trend in foreign travel by Canadians now appears to have levelled off at the beginning of 1990.

Available on CANSIM: matrices 2661-2697.

The April 1990 issue of *International Travel - Advance Information* (66-001P, \$6.10/\$61) will be available mid-June. See "How to Order Publications".

For further information on this release, contact Paul L. Paradis (613-951-8933), International Travel Section, Education, Culture and Tourism Division.

Note to Users:

The seasonally adjusted series are smoothed by means of a 13-month Henderson moving average. The short-term trend provides a clearer picture of the direction and change in international travel to and from Canada. The trend for the last month is not shown, however, since it can change significantly with the addition of succeeding months of data.

International Travel Between Canada and Other Countries

April 1990

	April 1990 ^p	% Change 1990/1989	January- April 1990 ^p	% Change 1990/1989
Unadjusted				
Estimated Overnight Trips¹				
Non-resident Travellers:				
All Countries	850,559	13.4	2,629,278	3.5
United States	669,694	13.3	2,094,188	2.8
Other Countries	180,865	13.6	535,090	6.7
Residents of Canada:				
All Countries	1,722,898	14.8	6,240,033	11.7
United States	1,463,760	17.7	4,958,220	13.7
Other Countries	259,138	0.7	1,281,813	4.8
Total Number of Trips²				
Non-resident Travellers:				
All Countries	2,463,713	4.8	8,254,567	0.9
United States	2,265,192	4.2	7,669,920	0.6
Other Countries	198,521	11.7	584,647	5.2
Residents of Canada:				
All Countries	5,803,711	17.3	21,040,834	16.5
United States	5,544,573	18.2	19,759,021	17.4
Other Countries	259,138	0.7	1,281,813	4.8
1990				
	April ^p	March ^r	February	January
Seasonally Adjusted				
Estimated Overnight Trips¹				
Non-resident Travellers:				
All Countries	1,304,571	1,320,066	1,288,905	1,300,244
United States	1,046,297	1,063,742	1,029,092	1,036,457
Other Countries	258,274	256,324	259,813	263,787
Residents of Canada:				
All Countries	1,630,439	1,667,484	1,650,403	1,712,628
United States	1,375,333	1,408,999	1,394,496	1,451,813
Other Countries	255,106	258,485	255,907	260,815
Total Number of Trips²				
Non-resident Travellers:				
All Countries	3,212,101	3,255,089	3,203,766	3,235,694
United States	2,935,451	2,975,913	2,918,837	2,944,185
Other Countries	276,650	279,176	284,929	291,509
Residents of Canada:				
All Countries	5,666,650	5,864,213	5,852,861	6,035,971
United States	5,411,544	5,605,728	5,596,954	5,775,156
Other Countries	255,106	258,485	255,907	260,815

¹ Overnight estimates for the United States include auto and bus for one or more nights, and estimated one or more nights numbers for plane, train, boat and other methods. Figures for "Other Countries" exclude same day entries by land only, via the United States.

² Includes same-day travel.

^p Preliminary.

^r Revised.

DATA AVAILABILITY ANNOUNCEMENTS

Railway Carloadings

10-day period ending May 31, 1990

Revenue freight loaded by railways in Canada during the week totalled 6.9 million tonnes, an increase of 5.9% over the same period last year.

Piggyback traffic increased 13.1% and the number of cars loaded increased 21.3%.

The tonnage of revenue freight loaded to date this year is 3.9% higher than that loaded in the previous year.

Note: Piggyback traffic includes trailers and containers on flat cars. Piggyback traffic numbers are included in total carload traffic. All 1989 figures and 1990 cumulative data have been revised.

For more detailed information on this release, contact Angus MacLean (613-951-2484), Surface Transport Unit, Transportation Division. ■

Steel Primary Forms (Steel Ingots)

Week Ending June 2, 1990

Preliminary estimates indicate that Canadian steel primary forms production for the week ending June 2, 1990 totalled 288 305 tonnes, a decrease of 3.3% from the preceding week's total of 298 183 tonnes and down 5.2% from the year-earlier level of 304 122 tonnes.

The cumulative total in 1990 was 6 112 087 tonnes, a decrease of 10.6% from 6 834 631 tonnes for the same period in 1989.

For further information on this release, contact Greg Milsom (613-951-9827), Industry Division. ■

Shipments of Rolled Steel

April 1990

Rolled steel shipments for April 1990 totalled 975 060 tonnes, a decrease of 8.2% from the preceding month's total of 1 062 036 tonnes and a decrease of 14.5% from the year-earlier level of 1 140 961 tonnes.

Year-to-date shipments totalled 3 996 975 tonnes, a decrease of 11.5% from 4 515 736 tonnes the previous year.

Available on CANSIM: matrices 58 and 122 (series 22-25).

The April 1990 issue of *Primary Iron and Steel* (41-001, \$5/\$50) will be available at a later date. See "How to Order Publications".

For further information on this release, contact Gerry Barrett (613-951-3515), Industry Division. ■

Steel, Primary Forms

April 1990

Steel, primary forms, production for April 1990 totalled 1 184 319 tonnes, a decrease of 12.7% from 1 355 941 tonnes the previous year.

Year-to-date production was 4 711 862 tonnes, down 12.4% from 5 376 696 tonnes a year earlier.

Available on CANSIM: matrix 58 (level 2, series 3).

The April 1990 issue of *Primary Iron and Steel* (41-001, \$5/\$50) will be available at a later date. See "How to Order Publications".

For further information on this release, contact Gerry Barrett (613-951-3515), Industry Division. ■

Passenger Bus and Urban Transit Statistics

April 1990

In April 1990, a total of 70 Canadian urban transit systems with gross annual total operating revenues of \$500,000 or more (subsidies included) carried 122,177,583 fare passengers, a decrease of 13.1% from the previous month. A comparison with the same period in 1989 showed a decrease of 3.7%. Operating revenues totalled \$95,713,073, down 11.3% from March 1990, but up 2.5% over April 1989.

During the same period, 23 passenger bus carriers earning \$500,000 or more annually from intercity and rural bus operations carried 1,152,106 fare passengers, down 8.3% from the previous month and down 3.4% from the same month last year. Earnings of these carriers totalled \$20,155,160, a 5.4% decrease from the March 1990 operating revenues, but an increase of 32.0% over April 1989.

All 1989 figures and 1990 cumulative data have been revised.

Available on CANSIM: matrices 351 and 352.

The April 1990 issue of *Passenger Bus and Urban Transit Statistics* (53-003, \$7.10/\$71) will be available the fourth week of June. See "How to Order Publications".

For further information on this release, contact Angus MacLean (613-951-2484), Transportation Division. ■

Pulpwood and Wood Residue Statistics

April 1990

Pulpwood receipts amounted to 1 613 035 cubic metres in April 1990, a 19.8% decrease from 2 010 387 cubic metres a year earlier. Receipts of wood residue totalled 4 765 493 cubic metres, up 1.4% over 4 698 530 cubic metres in April 1989. Consumption of pulpwood and wood residue was reported at 7 994 105 cubic metres, a decrease of 5.3% from 8 442 994 cubic metres reported the previous year. The closing inventory of pulpwood and wood residue totalled 20 479 396 cubic metres, an increase of 6.1% over 19 303 392 cubic metres a year earlier.

Year-to-date receipts of pulpwood totalled 13 359 789^r cubic metres, a decrease of 8.0% from 14 521 505 cubic metres a year earlier. Receipts of wood residue increased 5.2% to 19 007 075^r cubic metres, from the year-earlier level of 18 070 442 cubic metres. Consumption of pulpwood and wood residue, at 33 729 900^r cubic metres, was down 2.3% from 34 527 184 cubic metres a year earlier.

Available on CANSIM: matrix 54.

The April 1990 issue of *Pulpwood and Wood Residue Statistics* (25-001, \$6.10/\$61) will be available at a later date. See "How to Order Publications".

For further information on this release contact Jacques Lepage (613-951-3516), Industry Division. ■

Oils and Fats

April 1990

Production by Canadian manufacturers of all types of deodorized oils in April 1990 totalled 47 326 tonnes, a decrease of 9.1% from the 52 085 tonnes produced in March 1990. Year-to-date production totalled

196 887 tonnes, an increase of 1.7% over the corresponding 1989 figure of 193 642 tonnes.

Manufacturers' packaged sales of shortening totalled 8 842 tonnes in April 1990, down from the 10 268 tonnes sold the previous month. Cumulative sales-to-date were 36 615 tonnes, compared to the cumulative sales of 38 094 tonnes in 1989.

Sales of packaged salad oil decreased to 4 309 tonnes in April 1990, from 7 263 tonnes in March 1990. Cumulative sales-to-date in 1990 were 23 857 tonnes, compared to the sales of 26 470 tonnes for the same period in 1989.

Available on CANSIM: matrix 184.

The April 1990 issue of *Oils and Fats* (32-006, \$5/\$50) will be available at a later date. See "How to Order Publications".

For further information on this release, contact Brian Preston (613-951-3511), Industry Division. ■

Particleboard Industry

1988 Annual Survey of Manufactures

In 1988, the value of shipments and other revenue for the particleboard industry (SIC 2592) totalled \$356.0 million, up 2.5% over \$347.2 million in 1987.

Available on CANSIM: matrix 5470.

The data will be published in *Wood Industries* (35-250, \$49), available at a later date. See "How to Order Publications".

For further information on this release, contact J. Lepage (613-951-3516), Industry Division. ■

Waferboard Industry

1988 Annual Survey of Manufactures

In 1988, the value of shipments and other revenue for the waferboard industry (SIC 2593) totalled \$317.3 million, up 20.1% over \$264.3 million in 1987.

Available on CANSIM: matrix 5471.

The data will be published in *Wood Industries* (35-250, \$49), available at a later date. See "How to Order Publications".

For further information on this release, contact J. Lepage (613-951-3516), Industry Division. ■

Asphalt Roofing Industry

1988 Annual Survey of Manufactures

In 1988, the value of shipments and other revenue for the asphalt roofing industry (SIC 2721) totalled \$493.1 million, down 4.8% from \$518.0 million in 1987.

Available on CANSIM: matrix 5488.

The data will be published in *Paper and Allied Products Industries* (36-250, \$35), available at a later date. See "How to Order Publications".

For further information on this release, contact Sandra Bohatyretz (613-951-3531), Industry Division. ■

Steel Foundries Industry

1988 Annual Survey of Manufactures

In 1988, the value of shipments and other revenue for the steel foundries industry (SIC 2912) totalled \$255.4 million, up 24.9% over \$204.5 million in 1987.

Available on CANSIM: matrix 5506.

The data will be published in *Primary Metals Industries* (41-250, \$35), available at a later date. See "How to Order Publications".

For further information on this release, contact G.W. Barrett (613-951-3515), Industry Division. ■

Other Transportation Equipment Industry

1988 Annual Survey of Manufactures

In 1988, the value of shipments and other revenue for the other transportation equipment industry (SIC 3299) totalled \$282.2 million, up 6.8% over \$264.3 million in 1987.

Available on CANSIM: matrix 5566.

The data will be published in *Transportation Equipment Industries* (42-251, \$35), available at a later date. See "How to Order Publications".

For further information on this release, contact G.W. Barrett (613-951-3515), Industry Division. ■

Battery Industry

1988 Annual Survey of Manufactures

In 1988, the value of shipments and other revenue for the battery industry (SIC 3391) totalled \$422.0 million, up 0.4% over \$420.2 million in 1987.

Available on CANSIM: matrix 5584.

The data will be published in *Electrical and Electronic Products Industries* (43-250, \$35), available at a later date. See "How to Order Publications".

For further information on this release, contact W.L. Vincent (613-951-3523), Industry Division. ■

Clay Products (From Domestic Clay) Industry

1988 Annual Survey of Manufactures

In 1988, the value of shipments and other revenue for the clay products (from domestic clay) industry (SIC 3511) totalled \$188.6 million, down 4.5% from \$197.8 million in 1987.

Available on CANSIM: matrix 6849.

The data will be published in *Non-metallic Mineral Products Industries* (44-250, \$35), available at a later date. See "How to Order Publications".

For further information on this release, contact Karnail Singh Gill (613-951-3520), Industry Division. ■

Industrial Organic Chemical Industries, n.e.c.

1988 Annual Survey of Manufactures

In 1988, the value of shipments and other revenue for the industrial organic chemical industries, n.e.c. (SIC 3712) totalled \$6,539.1 million, up 27.8% over \$5,118.3 million in 1987.

Available on CANSIM: matrix 6871.

The data will be published in *Chemical and Chemical Products Industries* (46-250, \$35), available at a later date. See "How to Order Publications".

For further information on this release, contact T. Raj Sehdev (613-951-3513), Industry Division. ■

PUBLICATIONS RELEASED

Canned and Frozen Fruits and Vegetables - Monthly, December 1989.

Catalogue number 32-011

(Canada: \$5.00/\$50.00; United States: US\$6.00/US\$60.00; Other Countries: US\$7.00/US\$70.00).

Security Transactions with Non-residents, March 1990.

Catalogue number 67-002

(Canada: \$15.80/\$158.00; United States: US\$19.00/US\$190.00; Other Countries: US\$22.10/US\$221.00).

Imports by Country (H.S. Based), January-March 1990.

Catalogue number 65-006

(Canada: \$82.75/\$331.00; United States: US\$99.25/US\$397.00; Other Countries: US\$115.75/US\$463.00).

Exports by Commodity (H.S. Based), March 1990.

Catalogue number 65-004

(Canada: \$55.10/\$551.00; United States: US\$66.10/US\$661.00; Other Countries: US\$77.10/US\$771.00).

How to Order Publications

Statistics Canada publications may be purchased by mail order from Publication Sales, Room 1710, Main Building, Statistics Canada, Ottawa K1A 0T6 or phone 613-951-7277.

Please enclose cheque or money order payable to the Receiver General for Canada/Publications and provide full information on publications required (catalogue number, title, issue).

Publications may also be ordered through Statistics Canada's offices in St. John's, Halifax, Montreal, Ottawa, Toronto, Winnipeg, Regina, Edmonton, Calgary and Vancouver, or from authorized bookstore agents or other booksellers.

A national toll-free telephone order service is now in operation at Statistics Canada. The toll-free line (1-800-267-6677) can be used by Canadian customers for the ordering of Statistics Canada products and services.

**The
Daily**

Statistics Canada's Official Release Bulletin for Statistical Information

Catalogue 11-001E. Price: Canada: \$120.00 annually; United States: US\$144.00 annually; Other Countries: US\$168.00 annually

Published by the Communications Division
Statistics Canada, 3-N, R.H. Coats Bldg., Ottawa K1A 0T6.

Senior Editor: Greg Thomson (613-951-1116)
Editor: Bonnie Williams (613-951-1103)

Published under the authority of the Minister of Industry, Science and Technology. All rights reserved. No part of this publication may be reproduced, stored in a retrieval system or transmitted in any form or by any means, electronic, mechanical, photocopying, recording or otherwise without prior written permission of the Minister of Supply and Services Canada.

MAJOR RELEASE DATES

Week of June 11 - 15
(Release dates are subject to change)

Anticipated date(s) of release	Title	Reference period
<hr/>		
June		
11	New Housing Price Index	April 1990
11	Farm Product Price Index	April 1990
11	Department Store Sales by Province and Metropolitan Area	April 1990
11	New Motor Vehicle Sales	April 1990
15	The Consumer Price Index	May 1990
15	Preliminary Statement of Canadian International Merchandise Trade	April 1990

Statistics Canada Library
Bibliothèque Statistique Canada



1010043169