



The Daily

Statistics Canada

Thursday, April 18, 1991

NOT FOR LOAN
NE S'EMPRUNTE PAS

STATISTICS CANADA
STATISTIQUE CANADA
APR 18 1991
LIBRARY
BIBLIOTHÈQUE

MAJOR RELEASES

- **Preliminary Statement of Canadian International Trade, February 1991**
Substantial decreases for exports and imports in February were consistent with the recessions in both Canada and the United States.
- **Monthly Survey of Manufacturing, February 1991**
Shipments declined 0.3% in February following a 2.2% decrease in January. Unfilled orders decreased 1.4%, the seventh consecutive decrease.

3

DATA AVAILABILITY ANNOUNCEMENTS

Export and Import Price Indexes, February 1991	6
Steel Primary Forms, Week Ending April 13, 1991	6
Stocks of Frozen Poultry Products, April 1, 1991	6

PUBLICATIONS RELEASED

7



Statistics
Canada

Statistique
Canada

Canada

MAJOR RELEASES

Preliminary Statement of Canadian International Trade

February 1991

Total merchandise exports dropped by \$609 million in February. The largest decline occurred in the automotive products sector. As a result of temporary plant shutdowns in February, car exports fell by \$349 million to \$759 million, the lowest level since September 1983. Crude petroleum exports also fell substantially (-\$247 million) as a result of lower prices.

Imports plunged by \$1.0 billion. Car imports dropped by \$647 million, after showing increases in December 1990 and January 1991 (\$205 million and \$510 million, respectively). This is a confirmation that January figures were abnormally high as a result of the introduction of the Goods and Services Tax and the elimination of the Federal Sales Tax. Imports of parts decreased by \$100 million, primarily due to plant shutdowns in February.

With imports declining more than exports, the merchandise trade surplus for February was \$626 million, almost \$400 million higher than the revised January level.

Available on CANSIM: matrices 3620-3629, 3651, 3685-3713, 3718, 3719, 3887-3913.

Current account data, which incorporate merchandise trade statistics as well as data concerning trade in services and capital account movements, are available on a quarterly basis in *Canada's Balance of International Payments* (67-001).

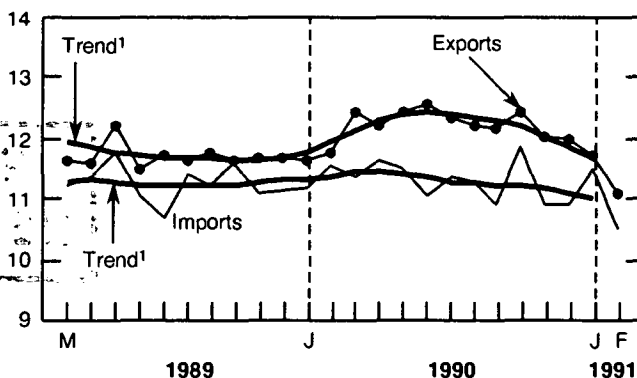
For further information on international trade statistics (detailed tables, charts and a more complete analysis), order *Preliminary Statement of Canadian International Trade* (65-001P, \$10/\$100), now available. See "How to Order Publications".

For more detailed information on statistics, concepts and definitions, order the February 1991 issue of *Summary of Canadian International Trade* (65-001, \$18.20/\$182), available the first week of May, or contact Gordon Blaney (613-951-9647), Trade Information Unit, Marlene Sterparn (613-951-1711) for analysis information, or Denis Pilon (613-951-4808) for price index information, Trade Measures and Analysis Section, International Trade Division. ■

Merchandise Trade

Seasonally Adjusted
Balance of Payments Basis

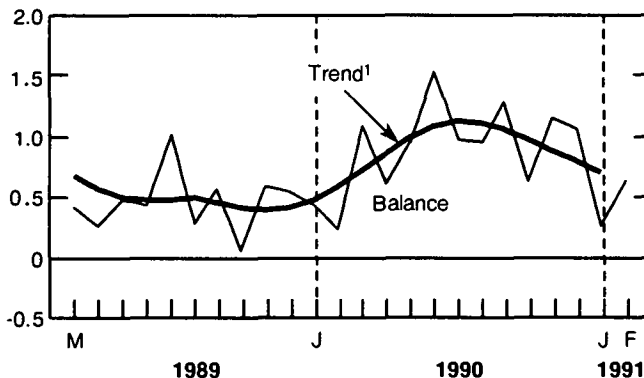
Billions of dollars



Merchandise Trade Balance

Seasonally Adjusted
Balance of Payments Basis

Billions of dollars



¹ The short-term trend represents a weighted average of the data.

Monthly Survey of Manufacturing

February 1991

Seasonally Adjusted

Shipments declined 0.3% in February following a 2.2% decrease in January. Unfilled orders dropped 1.4%, the seventh decrease in a row while new orders fell for the seventh time in the last eight months. Inventory levels decreased for the second month in a row.

The **short-term trend** for shipments declined about 1.0% a month for the last five periods. The trend has been declining since September 1989 (except for a short pause between April and June 1990). The unfilled orders trend has been declining for almost two years, apart from two small increases in August and September 1989. The trend for new orders has declined about 1.3% a month for the last five periods.

The inventories trend has declined for the past year. As a result of a gently declining trend for inventories and a more sharply declining trend for shipments, the trend for the inventory to shipments ratio has increased from 1.51 in July 1990 to 1.59 in January 1991.

Highlights

- Preliminary estimates indicate that Canadian manufacturers' **shipments** were \$23.1 billion in February, a decline of 0.3% from the previous month. Decreases in transportation equipment (-2.9%) and the paper and allied products (-3.7%) industries were partly offset by increases in wood industries (7.7%) and the fabricated metal products industries (5.2%). The trends for 18 out of 22 major industry groups continued to decrease, although in most cases, at a slightly slower pace than in the previous period.
- **Inventories** (owned) decreased 0.5% to \$36.6 billion. A second consecutive major decrease in the refined petroleum and coal products industry (-9.3%) accounted for most of this drop. The trend for inventories (owned) has declined since February 1990.
- The **inventories to shipments ratio** remained at 1.59 in February. The trend continued to increase, from 1.51 in July 1990 to 1.59 in January 1991.
- **Unfilled orders** decreased 1.4% to \$26.1 billion, the seventh decrease in a row. An increase in machinery industries (5.3%) was more than offset by decreases in the transportation equipment (-1.7%), primary metals (-7.0%) and electrical and electronic products (-1.6%) industries. The trend for unfilled orders has declined since October 1989, with decreases of about 1.0% a month for the last four periods.

Unfilled orders are the stock of orders which will generate future shipments, assuming that orders are not cancelled.

New orders are defined as the sum of shipments for the current month (i.e., orders received this month and shipped within the same month) plus the change in unfilled orders.

- **New orders** decreased by 1.2% to a level of \$22.7 billion. The trend, which had increased from March to June 1990, fell for the sixth month in a row.

Year-to-date

- Manufacturers' shipments for the first two months of 1991 were estimated at \$46.2 billion, 4.6% lower than the value for the corresponding period in 1990.

Available on CANSIM: matrices 9550-9580.

For more information, consult the February 1991 issue of *Monthly Survey of Manufacturing* (31-001, \$17.30/\$173), available shortly.

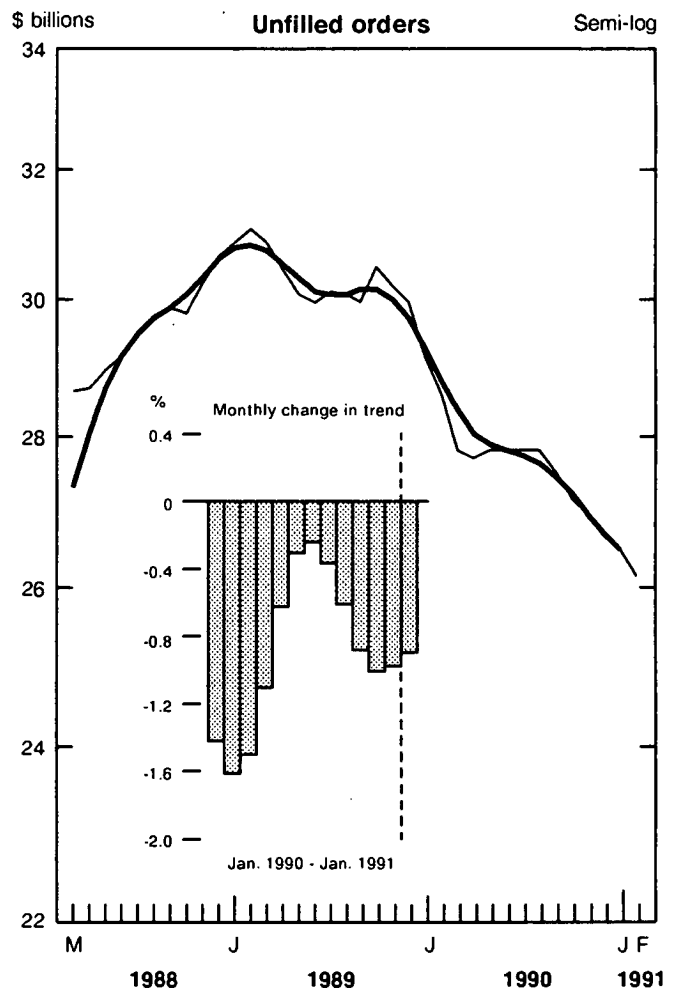
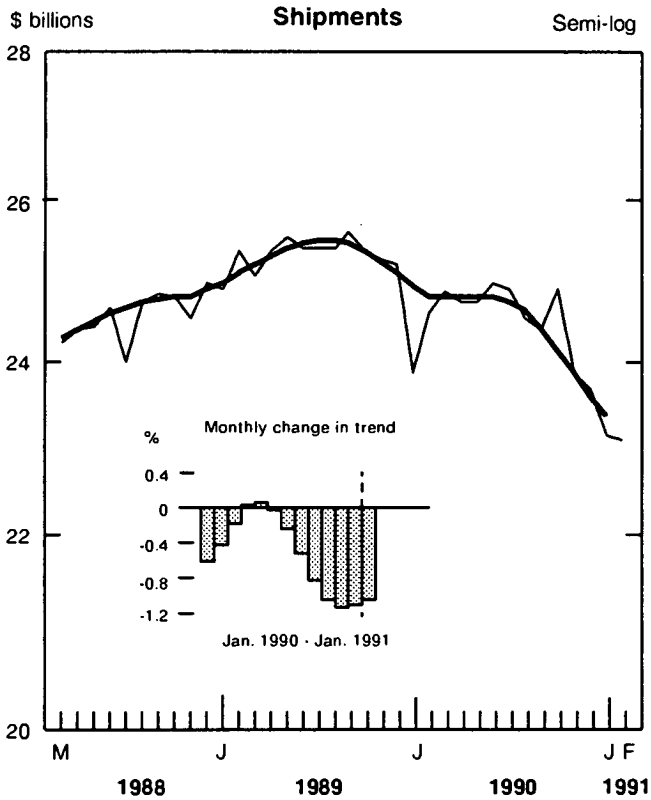
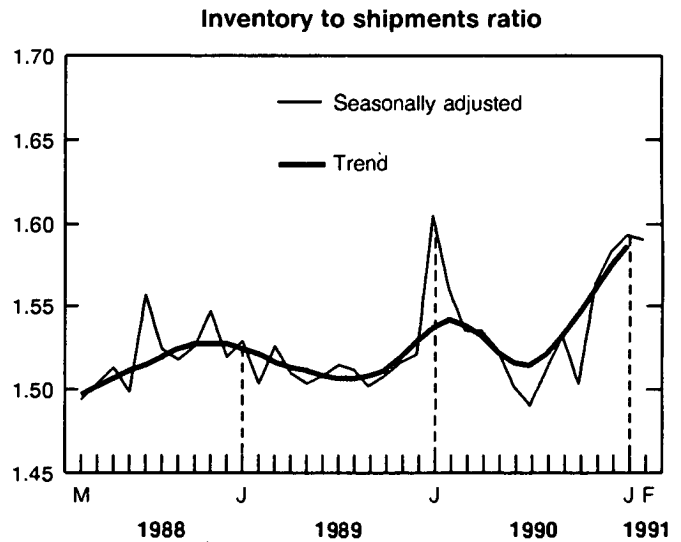
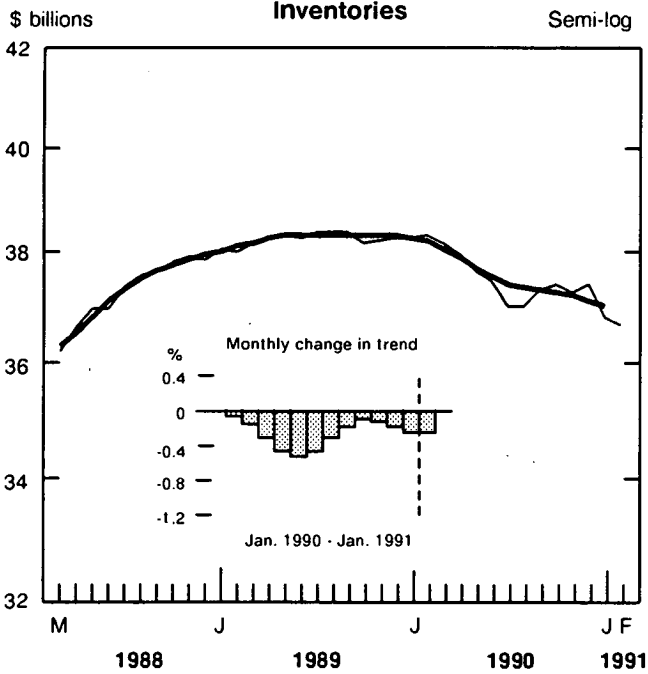
Data for shipments by province in greater detail than normally published may be available on request. For further information, contact Bob Traversy, Information Officer (613-951-9497), or the Monthly Survey of Manufacturing Section (613-951-9832), Industry Division.

Note:

The appendix in the March 1990 issue of *Monthly Survey of Manufacturing* contains estimated values of shipments, inventories and orders revised back to January 1987.

□

Manufacturers' Inventories, Shipments and Unfilled Orders, February 1991



Shipments, Inventories and Orders in All Manufacturing Industries
February 1991

Period	Not seasonally adjusted				Seasonally adjusted			
	Shipments	Inven- tories	Unfilled orders	New orders	Shipments	Inven- tories	Unfilled orders	New orders
\$ millions								
February 1990	23,117	38,944	28,861	22,875	24,564	38,316	28,619	24,044
March 1990	26,276	38,646	28,374	25,789	24,844	38,135	27,803	24,028
April 1990	24,452	38,456	28,210	24,288	24,706	37,926	27,687	24,590
May 1990	26,795	37,878	28,404	26,989	24,706	37,642	27,826	24,845
June 1990	26,465	37,333	27,869	25,931	24,940	37,438	27,807	24,920
July 1990	22,702	36,745	27,833	22,665	24,859	37,014	27,802	24,854
August 1990	24,326	36,918	27,861	24,354	24,516	37,021	27,788	24,502
September 1990	24,775	36,964	27,350	24,264	24,352	37,312	27,520	24,084
October 1990	26,728	37,018	26,891	26,269	24,881	37,378	27,125	24,487
November 1990	24,481	36,961	26,719	24,309	23,852	37,258	26,928	23,655
December 1990	21,473	36,847	26,044	20,798	23,643	37,413	26,633	23,348
January 1991	21,866	36,981	26,363	22,185	23,132	36,821	26,473	22,972
February 1991	21,384	37,225	25,939	20,960	23,059	36,634	26,106	22,692

Period	Seasonally Adjusted									
	Shipments		Inventories		Inventory to shipments ratio		Unfilled orders		New orders	
	S.A.	Trend	S.A.	Trend	S.A.	Trend	S.A.	Trend	S.A.	Trend
	Month to month % change				Ratio		Month to month % change			
February 1990	3.0	-0.4	0.2	-0.2	1.56	1.54	-1.8	-1.6	4.2	-0.6
March 1990	1.1	-0.2	-0.5	-0.3	1.53	1.54	-2.9	-1.5	-0.1	0.1
April 1990	-0.6	0.0	-0.5	-0.5	1.54	1.53	-0.4	-1.1	2.3	0.6
May 1990	0.0	0.1	-0.7	-0.5	1.52	1.52	0.5	-0.6	1.0	0.7
June 1990	0.9	0.0	-0.5	-0.5	1.50	1.52	-0.1	-0.3	0.3	0.4
July 1990	-0.3	-0.2	-1.1	-0.3	1.49	1.51	0.0	-0.2	-0.3	0.0
August 1990	-1.4	-0.5	0.0	-0.2	1.51	1.52	-0.1	-0.4	-1.4	-0.5
September 1990	-0.7	-0.8	0.8	-0.1	1.53	1.53	-1.0	-0.6	-1.7	-1.0
October 1990	2.2	-1.0	0.2	-0.1	1.50	1.54	-1.4	-0.9	1.7	-1.3
November 1990	-4.1	-1.1	-0.3	-0.2	1.56	1.56	-0.7	-1.0	-3.4	-1.4
December 1990	-0.9	-1.1	0.4	-0.2	1.58	1.57	-1.1	-1.0	-1.3	-1.4
January 1991	-2.2	-1.0	-1.6	-0.2	1.59	1.59	-0.6	-0.9	-1.6	-1.3
February 1991	-0.3	*	-0.5	*	1.59	*	-1.4	*	-1.2	*

* The short-term trend represents a weighted average of the data.

DATA AVAILABILITY ANNOUNCEMENTS

Export and Import Price Indexes

February 1991

Current and fixed-weighted export and import price indexes, on a balance of payments basis, are now available (1986 = 100). Price indexes are listed from January 1986 to February 1991 for the five commodity sections and 62/61 major commodity groups.

Customs-based current and fixed-weighted U.S. price indexes are also available. Price indexes are listed from January 1986 to February 1991 (1986 = 100). Included with the U.S. commodity indexes are the 10 "All Countries" and "U.S. only" SITC section indexes.

Available on CANSIM: matrices 3620-3629, 3651, 3685.

The February 1991 issue of *Summary of Canadian International Trade* (65-001, \$18.20/\$182) will be available the first week of May. See "How to Order Publications".

For further information on this release, contact Denis Pilon (613-951-4808), Price Index Unit, International Trade Division. ■

Steel Primary Forms

Week Ending April 13, 1991

Preliminary estimates indicate that Canadian steel primary forms production for the week ending April 13, 1991 totalled 261 783 tonnes, an increase of 8.4% from the preceding week's total of 241 600 tonnes, but down 4.4% from the year-earlier level of 272 819 tonnes. The cumulative total in 1991 was 3 857 887 tonnes, a decrease of 4.0% from 4 018 646 tonnes for the same period in 1990.

For more detailed information on this release, contact Greg Milsom (613-951-9827), Industry Division. ■

Stocks of Frozen Poultry Products

April 1, 1991

Preliminary data on cold storage of frozen poultry products at April 1, 1991, and revised figures for March 1, 1991, are now available.

Available on CANSIM: matrices 5675-5677.

To order the statistical bulletin, *Production and Stocks of Eggs and Poultry* (\$115 annually), contact Guy Gervais (613-951-2453).

For more detailed information on this release, contact Benoit Lévesque (613-951-2550), Livestock and Animal Products Section, Agriculture Division. ■

PUBLICATIONS RELEASED

Monthly Production of Soft Drinks, March 1991.

Catalogue number 32-001

(Canada: \$2.70/\$27.00; United States: US\$3.20/US\$32.00; Other Countries: US\$3.80/US\$38.00).

Oils and Fats, February 1991.

Catalogue number 32-006

(Canada: \$5.00/\$50.00; United States: US\$6.00/US\$60.00; Other Countries: US\$7.00/US\$70.00).

Gas Utilities, December 1990.

Catalogue number 55-002

(Canada: \$12.70/\$127.00; United States: US\$15.20/US\$152.00; Other Countries: US\$17.80/US\$178.00).

Consumer Price Index, March 1991.

Catalogue number 62-001

(Canada: \$9.30/\$93.00; United States: US\$11.20/US\$112.00; Other Countries: US\$13.00/US\$130.00).
Available Friday, April 19 at 7 a.m.

Farm Product Price Index, February 1991.

Catalogue number 62-003

(Canada: \$7.10/\$71.00; United States: US\$8.50/US\$85.00; Other Countries: US\$9.90/US\$99.00).

Preliminary Statement of Canadian International Trade, February 1991.

Catalogue number 65-001P

(Canada: \$10.00/\$100.00; United States: US\$12.00/US\$120.00; Other Countries: US\$14.00/US\$140.00).

How to Order Publications

Statistics Canada publications may be purchased by mail order from Publication Sales, Room 1710, Main Building, Statistics Canada, Ottawa K1A 0T6 or phone 613-951-7277.

Please enclose cheque or money order payable to the Receiver General for Canada/Publications and provide full information on publications required (catalogue number, title, issue).

Publications may also be ordered through Statistics Canada's offices in St. John's, Halifax, Montreal, Ottawa, Toronto, Winnipeg, Regina, Edmonton, Calgary and Vancouver, or from authorized bookstore agents or other booksellers.

A national toll-free telephone order service is in operation at Statistics Canada. The toll-free line (1-800-267-6677) can be used by Canadian customers for the ordering of Statistics Canada products and services.

**The
Daily**

Statistics Canada's Official Release Bulletin for Statistical Information

Catalogue 11-001E. Price: Canada: \$120.00 annually; United States: US\$144.00 annually; Other Countries: US\$168.00 annually

Published by the Communications Division
Statistics Canada, 10-L, R.H. Coats Bldg., Ottawa K1A 0T6.

Senior Editor: Greg Thomson (613-951-1116)
Editor: Bruce Simpson (613-951-1103)

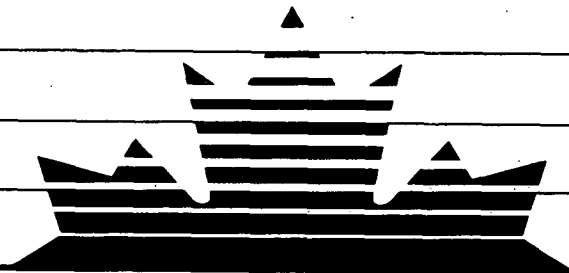
Published under the authority of the Minister of Industry, Science and Technology. All rights reserved. No part of this publication may be reproduced, stored in a retrieval system or transmitted in any form or by any means, electronic, mechanical, photocopying, recording or otherwise without prior written permission of the Minister of Supply and Services Canada.

Statistics Canada Library
Bibliothèque Statistique Canada



1010065755

1 9 9 1 C E N S U S O F C A N A D A



CENSUS DAY

June 4 • Count Yourself In!