



# The Daily

Statistics Canada

STATISTIQUE  
CANADA

Monday, November 2, 1992

NOT FOR LOAN

For release at 8:30 a.m. NOV 2 1992

## MAJOR RELEASES

NE S'EMPRUNTE PAS

LIBRARY  
BIBLIOTHÈQUE

- **Canadian Composite Leading Indicator, August 1992** 2

The leading indicator growth continued to accelerate, to 0.4% in August from 0.3% in July and 0.2% in June.
- **Quarterly Business Conditions Survey, Canadian Manufacturing Industries, October 1992** 4

On balance, Canadian manufacturers remained optimistic about the expected volume of production over the next three months. However, a smaller proportion of manufacturers, compared to the previous survey three months ago, indicate that orders received were rising.
- **Non-residential Building Construction Price Index, Third Quarter 1992** 7

The Non-residential Building Construction Price Index (1986 = 100) fell 0.4% to 121.1 in the third quarter of 1992.

## DATA AVAILABILITY ANNOUNCEMENTS

Basic Summary Tabulations, 1991 Census	8
Gypsum Products, September 1992	8
Shipments of Solid Fuel-burning Heating Products, Third Quarter 1992	8
Process Cheese and Instant Skim Milk Powder, September 1992	8
Specified Domestic Electrical Appliances, September 1992	8

## PUBLICATIONS RELEASED 9

## REGIONAL REFERENCE CENTRES 10

## INDEX TO DATA RELEASES: October 1992



Statistics  
Canada

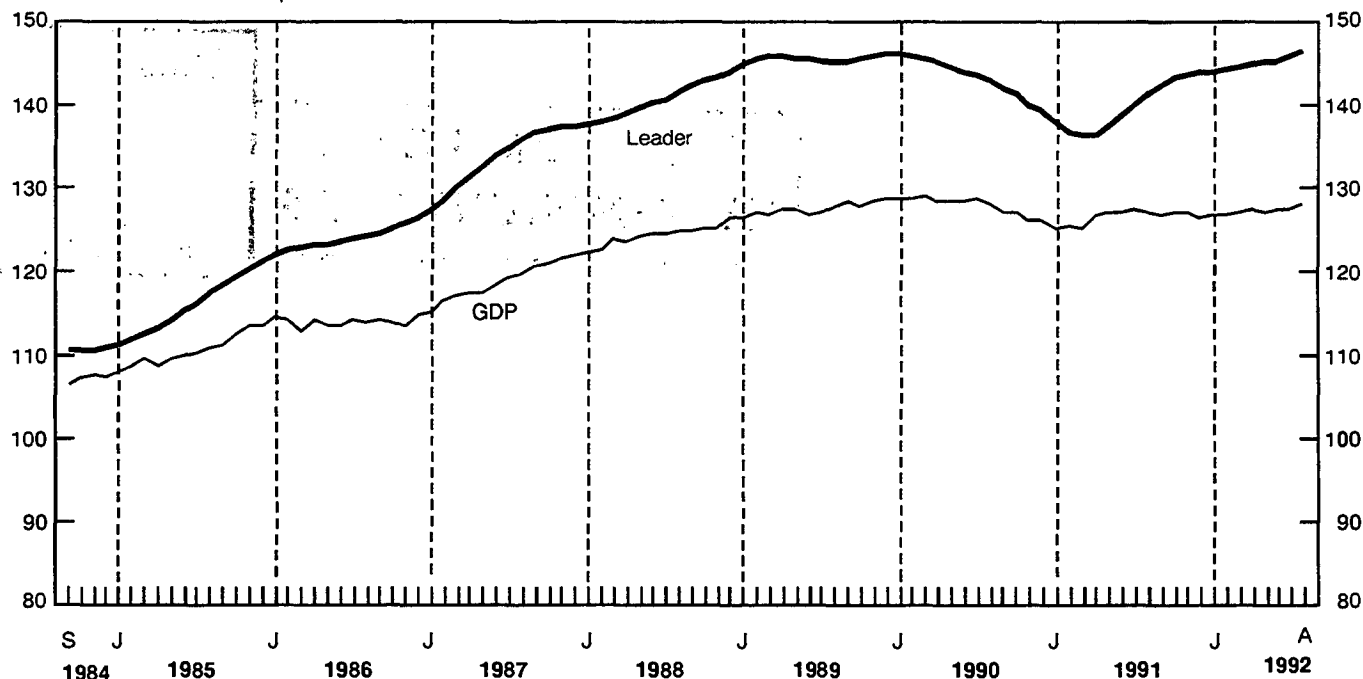
Statistique  
Canada

Canada

## MAJOR RELEASES

### Composite Leading Indicator and GDP

1981 = 100



### Canadian Composite Leading Indicator

August 1992

The leading indicator growth continued to accelerate, to 0.4% in August from 0.3% in July and 0.2% in June. Eight of the 10 components grew, up from five in July, as manufacturing demand returned to a positive trend. The components related to final demand, however, posted more moderate gains. The unsmoothed index rose by 0.7% after a slight 0.2% increase in July.

The housing index lost some of its force, which led to a slowdown in furniture and appliance sales. Housing starts fell 0.4% in urban centres in August; they rebounded in September, however, encouraged by government stimulus and a drop in vacancy rates. Sales of other durable goods edged up by 0.3% in August. Slack employment and income growth were reflected in the steady decline in the services component.

New orders for durable goods, which have seen alternating increases and decreases every month since March, rose again in August. The auto industry accounted for the change for the second month in a row, as assemblies recovered from longer than usual plant shutdowns in July. Auto sales remained sluggish, however, and more layoffs were recently announced. A hike in shipments lifted the ratio of shipments to inventories by only 0.02 points. The average workweek posted its second increase in three months, after being little changed earlier in the year.

The financial market indicators remained mixed in August. The money supply expanded by 0.3% after three consecutive gains of 0.1%. Stock market prices dropped 0.3% (the sixth straight monthly drop) and were the most significant source of weakness among all the components. The TSE 300 index fell sharply in September.

The U.S. leading indicator continued to slow, from growth of 0.3% in July to 0.2% in August. Unsmoothed, the index fell for the second time in the last three months. In September, employment fell for the second month in a row.

Available on CANSIM: matrix 191.

For more information on the economy, order the November issue of *Canadian Economic Observer* (11-010, \$22/\$220), which will be available the week of November 16-20. See "How to Order Publications".

For further information on this release or about the next release dates, contact Francine Roy (613-951-3627), Current Economic Analysis Division.

### Canadian Leading Indicators

	Percentage Change			Level	
	June	July	August	July	August
<b>Composite Leading Indicator (1981 = 100)</b>	<b>0.2</b>	<b>0.3</b>	<b>0.4</b>	<b>145.8</b>	<b>146.4</b>
Unsmoothed	1.0	0.2	0.7	147.1	148.2
<b>Retail Trade</b>					
Furniture and appliance sales	0.1	0.3	0.1	1,029.1 <sup>4</sup>	1,030.5 <sup>4</sup>
Other durable goods sales	0.0	0.1	0.3	3,533.1 <sup>4</sup>	3,544.8 <sup>4</sup>
<b>Housing index<sup>1</sup></b>	<b>1.5</b>	<b>1.8</b>	<b>0.8</b>	<b>132.1</b>	<b>133.1</b>
<b>Manufacturing</b>					
New orders - durables	0.2	-0.4	0.7	8,938 <sup>4</sup>	8,999 <sup>4</sup>
Shipment to inventory ratio - finished goods <sup>2</sup>	0.01	0.00	0.02	1.38	1.40
Average workweek (hours)	0.3	0.0	0.3	38.2	38.3
<b>Business and personal services employment (thousands)</b>	<b>-0.5</b>	<b>-0.3</b>	<b>-0.1</b>	<b>1,730</b>	<b>1,728</b>
<b>United States composite leading index (1967 = 100)</b>	<b>0.4</b>	<b>0.3</b>	<b>0.2</b>	<b>204.2</b>	<b>204.6</b>
<b>TSE 300 stock price index (1975 = 1000)</b>	<b>-0.8</b>	<b>-0.5</b>	<b>-0.3</b>	<b>3,422</b>	<b>3,411</b>
<b>Money supply (M1) (\$1981)<sup>3</sup></b>	<b>0.1</b>	<b>0.1</b>	<b>0.3</b>	<b>24,628<sup>4</sup></b>	<b>24,709<sup>4</sup></b>

<sup>1</sup> Composite index of housing starts (units) and house sales (MLS).

<sup>2</sup> Difference from previous month.

<sup>3</sup> Deflated by the consumer price index for all items.

<sup>4</sup> Millions of 1981 dollars.

## Quarterly Business Conditions Survey, Canadian Manufacturing Industries

October 1992

### Seasonally Adjusted

The balance of Canadian manufacturers' opinions about the expected volume of production in the upcoming quarter and the current backlog of unfilled orders was virtually unchanged between the July and October 1992 surveys. However, the balance for orders received and finished product inventories on hand decreased during the same period.

### Highlights

- Canadian manufacturers remained optimistic about the **expected volume of production** over the next three months. The balance of opinion for October 1992 is +10, one point lower than in the July 1992 survey.

The balance of +10 in October is calculated by subtracting the pessimistic 21% who indicated a "lower than normal" volume of expected production from the optimistic 31% who reported a "higher than normal" volume of expected production.

- The October 1992 balance of opinion concerning the current **backlog of unfilled orders** was -31, virtually unchanged from the July 1992 survey. Nevertheless, the balance of -31 was well above the -51 of the January 1992 survey, the -58 of the April 1991 survey and the -50 of the July 1991 survey.

Unfilled orders are the stock of orders which will generate future shipments, assuming that orders are not cancelled.

- The balance of opinion for **orders received** was down five points to -15 in the October 1992 survey, mainly as a result of a nine-point drop in the proportion of manufacturers who indicated that orders received were rising. Although the balance remains negative, it is still an improvement over the levels of -44 to -40 registered in the December 1990 to April 1991 surveys.

- The balance of opinion concerning **finished product inventories** on hand decreased 10 points to -26 in the October 1992 survey, as a

### Note to Users

Individual responses to the Business Conditions Survey are weighted by the value of the respondent's shipments reported to the 1987 Annual Survey of Manufactures. The proportions, therefore, reflect the magnitude of the individual manufacturer's contribution to the total. The balance is the difference between the proportion associated with the positive-type response (e.g., higher volume of production) and the proportion related to the negative-type response (e.g., lower volume of production). Both the raw data (raw) and seasonally adjusted (s.a.) data are given for the balance. The seasonally adjusted value for the neutral components (e.g., expected production about the same) is calculated by subtracting the sum of the seasonally adjusted values of the other two components from 100.

The Business Conditions Survey is carried out in January, April, July and October and the majority of responses are recorded in the first two weeks of these months. Results are based on replies from about 5,000 manufacturers.

result of a six-point increase for manufacturers who indicated that finished product inventories were too high and a four-point drop for those who indicated that they were too low. The current level of -26 is closer to the levels of about -30 posted in the January and April 1992 surveys, but it is still significantly above the -37 of the January 1991 survey and the -38 of the April 1991 survey. The transportation equipment industry accounted for most of the decrease.

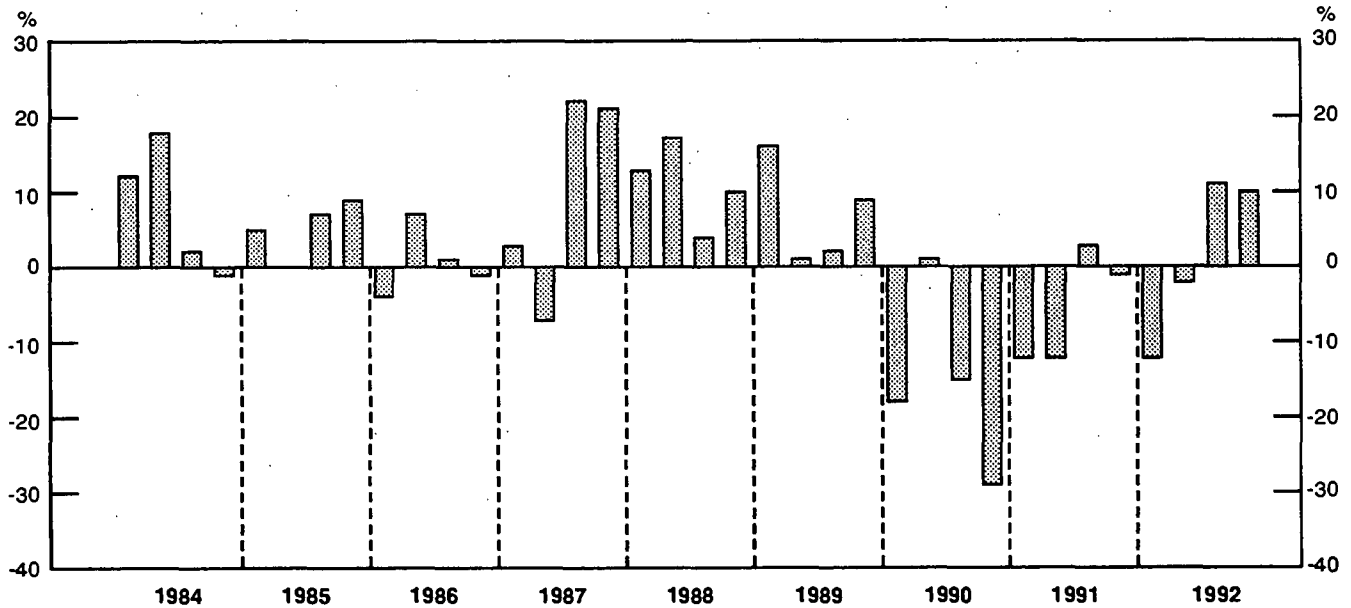
### Unadjusted

- About 80% of Canadian manufacturers did not report any particular production difficulties in the latest survey. Some 6% reported that a shortage of working capital impeded their level of production. This was down from 11% in October 1991. Another 8% reported having "other" sources of production difficulty. A review of respondents' comments in the "other" category shows that a majority indicated "lack of orders" and "weak markets" as the main sources of production difficulties. (See charts on page 5 and table on page 6.)

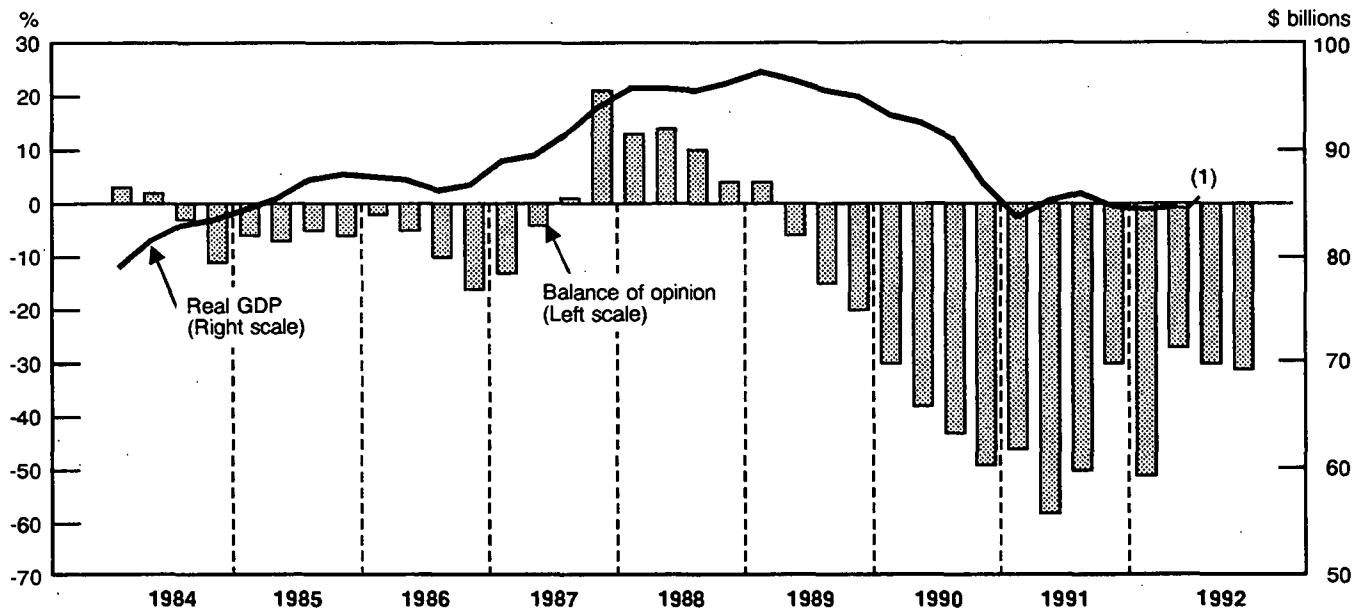
**Available on CANSIM (raw data only): matrices 2843-2845.**

For further information, please contact Claude Robillard (613-951-3507), Monthly Survey of Manufacturing Section, Industry Division. □

**Balance of Opinion for Expected Volume of Production  
Next Three Months vs Last Three Months**



**Balance of Opinion on Backlog of Unfilled Orders  
and Real GDP for Manufacturing Industries  
Seasonally adjusted**



(1) — July and August 1992

**Business Conditions Survey, Canadian Manufacturing Industries**  
October 1992

	All Manufacturing Industries				
	October 1991	January 1992	April 1992	July 1992	October 1992
<b>Volume of production during next three months compared with last three months will be:</b>					
			seasonally adjusted		
About the same	45	48	46	45	48
Higher	27	20	26	33	31
Lower	28	32	28	22	21
Balance	-1	-12	-2	11	10
			raw		
Balance	4	-23	18	-3	14
<b>Orders received are:</b>					
			seasonally adjusted		
About the same	50	50	65	48	61
Rising	21	15	11	21	12
Declining	29	35	24	31	27
Balance	-8	-20	-13	-10	-15
			raw		
Balance	-8	-26	-9	-8	-14
<b>Present backlog of unfilled orders is:</b>					
			seasonally adjusted		
About normal	36	43	45	52	57
Higher than Normal	17	3	14	9	6
Lower than Normal	47	54	41	39	37
Balance	-30	-51	-27	-30	-31
			raw		
Balance	-26	-52	-30	-28	-28
<b>Finished product inventory on hand is:</b>					
			seasonally adjusted		
About right	62	63	64	70	68
Too low	10	3	3	7	3
Too high <sup>1</sup>	28	34	33	23	29
Balance	-18	-31	-30	-16	-26
			raw		
Balance	-17	-32	-30	-16	-25
<b>Sources of production difficulties:</b>					
			raw		
Working capital shortage	11	8	8	7	6
Skilled labour shortage	3	2	2	3	2
Unskilled labour shortage	0	0	0	0	0
Raw material shortage	3	2	3	3	3
Other difficulties	8	5	6	8	8
No difficulties	75	82	80	78	80

<sup>1</sup> No evident seasonality.

## Non-residential Building Construction Price Index

Third Quarter 1992

### Highlights

The Non-residential Building Construction Price Index (1986 = 100) fell 0.4% to 121.1 in the third quarter of 1992. This decrease was largely due to an adjustment in the Montreal index because of the implementation of the Quebec Sales Tax (QST). The Canada price index in the third quarter of 1992 matched the level of the year-earlier third quarter.

- The indexes for the three western cities continued to show increases: Vancouver increased 0.8% to 118.5, Edmonton 0.8% to 125.5 and Calgary 0.7% to 123.8. Compared with the year-earlier third quarter indexes, Vancouver rose 3.0%, Edmonton 1.9% and Calgary 1.6%.
- In the third quarter of 1992, Toronto recorded its first quarterly increase (0.3% to 124.6) since the second quarter of 1990, when the index stood at 132.8. In the past year, the Toronto index has declined by 0.2%.

- The index for Ottawa maintained its climb in the third quarter, posting its fifth consecutive increase (0.1% to 125.6). The Halifax index posted its second consecutive decline of 0.1% (108.8).

On July 1, 1992, the province of Quebec implemented Phase II of the harmonization of the QST with the federal Goods and Services Tax. The price indexes for Montreal no longer include Provincial Sales Tax (which was repealed) nor do the indexes include the QST (which is the same treatment as for the GST). When combined with reported price changes, the net effect is that the index for Montreal in the third quarter of 1992 dropped 3.5% (111.4) from the previous quarter and was 2.2% lower than in the third quarter of 1991.

**Available on CANSIM: matrices 2042 and 2043.**

The third quarter 1992 issue of *Construction Price Statistics* (62-007, \$18/\$72) will be available in December. See "How to Order Publications".

For more detailed information on this release, contact the Information and Current Analysis Unit (613-951-9607), Prices Division.

## Non-residential Building Construction Price Indexes

Third Quarter 1992  
(1986 = 100)

	Seven Cities and Composite Indexes							Canada
	Halifax	Montreal	Ottawa	Toronto	Calgary	Edmonton	Vancouver	
Quarterly Indexes								
1991								
Third Quarter	108.9	113.9	124.4	124.9	121.8	123.2	115.1	121.1
Fourth Quarter	109.0	114.0	124.7	124.6	121.8	123.5	115.9	121.1
1992								
First Quarter	109.0	114.4	125.1	124.3	122.1	123.7	116.1	121.1
Second Quarter	108.9	115.4	125.5	124.2	123.0	124.5	117.6	121.6
Third Quarter	108.8	111.4	125.6	124.6	123.8	125.5	118.5	121.1
Percentage Change								
Q.4 1991/Q.3 1991	0.1	0.1	0.2	-0.2	0.0	0.2	0.7	0.0
Q.1 1992/Q.4 1991	0.0	0.4	0.3	-0.2	0.2	0.2	0.2	0.0
Q.2 1992/Q.1 1992	-0.1	0.9	0.3	-0.1	0.7	0.6	1.3	0.4
Q.3 1992/Q.2 1992	-0.1	-3.5	0.1	0.3	0.7	0.8	0.8	-0.4
Q.3 1992/Q.3 1991	-0.1	-2.2	1.0	-0.2	1.6	1.9	3.0	0.0

**Note:** Effective January 1, 1991, the Goods and Services tax is excluded but the Provincial Sales Tax, where applicable, is included (as before). The Quebec Sales Tax, Phase II harmonization with the G.S.T., became effective July 1, 1992, but is excluded from these indexes. ■

---

## DATA AVAILABILITY ANNOUNCEMENTS

---

### Basic Summary Tabulations

1991 Census

The 1991 Census Basic Summary Tabulation (L9101) is now available. This table contains population counts by mother tongue and shows age groups. The geographic coverage extends from Canada, the provinces and territories to enumeration areas. The tabulation is available on magnetic tape.

Statistics Canada offers a service allowing users to request selected geographic portions of these tabulations for standard and non-standard census areas. The presentation of the selected data will be on diskette or paper.

To order the 1991 Census Basic Summary Tabulation (L9101) or to obtain further information, contact Advisory Services at the nearest Statistics Canada Regional Reference Centre. ■

### Gypsum Products

September 1992

Manufacturers shipped 23 202 thousand square metres of plain gypsum wallboard in September 1992, up 18.2% from the 19 635 thousand square metres shipped in September 1991 and up 33.4% from the 17 387 thousand square metres shipped in August 1992.

Year-to-date shipments were 166 688 thousand square metres, an increase of 17.8% from the January to September 1991 period.

**Available on CANSIM:** matrices 39 and 122 (series 11).

The September 1992 issue of *Gypsum Products* (44-003, \$5/\$50) will be available at a later date.

For more detailed information on this release, please contact Roland Joubert (613-951-3527), Industry Division. ■

### Shipments of Solid Fuel-burning Heating Products

Third Quarter 1992

Shipments of solid fuel-burning heating products totalled \$18.0 million in the third quarter of 1992, a decrease of 1.4% from the \$18.3 million shipped during the third quarter of 1991.

Manufacturers' shipments of Canadian-made, solid fuel-burning heating products are now available, as are data on the number of units shipped.

The 1992 third quarter issue of *Shipments of Solid Fuel-burning Heating Products* (25-002, \$4.75/\$19) will be available at a later date.

For more detailed information on this release, contact Keith Martin (613-951-3518), Industry Division. ■

### Process Cheese and Instant Skim Milk Powder

September 1992

Production of process cheese in September 1992 totalled 8 375 849 kilograms, an increase of 4.8% from the August 1992 figure and an increase of 2.3% from the revised September 1991 figure. From January to September 1992, production totalled 58 252 598 kilograms, compared to the year-earlier 59 285 140r (revised) kilograms.

Total production of instant skim milk powder during September was 544 020 kilograms, an increase of 107.6% from August 1992 and an increase of 48.3% from August 1991. January to September 1992 production totalled 3 434 327 kilograms, compared to the 3 333 354 kilograms produced a year earlier.

**Available on CANSIM:** matrix 188 (series 1.10).

The September 1992 issue of *Production and Inventories of Process Cheese and Instant Skim Milk Powder* (32-024, \$5/\$50) will be available at a later date.

For more detailed information on this release, contact Peter Zylstra (613-951-3511), Industry Division. ■

### Specified Domestic Electrical Appliances

September 1992

Data on the production of kitchen appliances by Canadian manufacturers are confidential for September 1992, as are data for home comfort products for September.

The September 1992 issue of *Specified Domestic Electrical Appliances* (43-003, \$5/\$50) will be available at a later date.

For more detailed information on this release, contact L. Vincent (613-951-3523), Industry Division. ■

## PUBLICATIONS RELEASED

**Rigid Insulating Board**, September 1992.

**Catalogue number 36-002**

(Canada: \$5/\$50; United States: US\$6/US\$60;  
Other Countries: US\$7/US\$70).

**Cement**, September 1992.

**Catalogue number 44-001**

(Canada: \$5/\$50; United States: US\$6/US\$60;  
Other Countries: US\$7/US\$70).

**Telephone Statistics**, August 1992.

**Catalogue number 56-002**

(Canada: \$8.30/\$83; United States: US\$10/US\$100;  
Other Countries: US\$11.60/US\$116).

**Business Services, 1988-1990.**

**Catalogue number 63-232**

(Canada: \$30; United States: US\$36;  
Other Countries: US\$42).

The paper used in this publication meets the minimum requirements of American National Standard for Information Sciences - Permanence of Paper for Printed Library Materials, ANSI Z39.48 - 1984.



### How to Order Publications

*Simplify your search for data with the Statistics Canada Catalogue 1992. Using the keyword index, you'll find sources for statistics on all areas of Canadian social and economic activity. For easy access to over 800 Statistics Canada products and services, order the Statistics Canada Catalogue 1992 (11-204E, \$13.95; United States: US\$17; Other Countries: US\$20).*

*You may order Statistics Canada products and services by telephone. From Canada and the United States, call toll-free 1-800-267-6677. From all other locations, call 613-951-7277 (not toll-free).*

*You may purchase Statistics Canada publications by writing to Publication Sales, Room 1710, Main Building, Statistics Canada, Ottawa K1A 0T6.*

*Please enclose a cheque or money order payable to the Receiver General for Canada/Publications. Provide full information on each publication order (catalogue number, title, issue). Canadian customers, please add 7% GST.*

*Publications may also be ordered from Statistics Canada's Regional Reference Centres in St. John's, Halifax, Montreal, Ottawa, Toronto, Winnipeg, Regina, Edmonton, Calgary and Vancouver, or from authorized bookstore agents or other booksellers.*

<b>The Daily</b> Statistics Canada	
Wednesday, September 23, 1992	
For release at 9:00 a.m.	
<b>MAJOR RELEASES</b>	
• Real Gross Domestic Product at Factor Cost by Industry, July 1992	2
• Census of Population and Housing, 1991, preliminary results, 1991	3
• Unemployment Insurance Statistics, July 1992	5
• Building Permits, July 1992	7
• Import and Export - Canada, 1991	10
• The economy, July 1992: preliminary results, 1992	12
<b>DATA AVAILABILITY ANNOUNCEMENTS</b>	
• Right to Access Act, August 1992	12
• Access to Information Act, August 1992	12
<b>PUBLICATIONS RELEASED</b>	
• Major Release Dates: October 1992	14

### Statistics Canada's Official Release Bulletin for Statistical Information

Catalogue 11-001E. Price: Canada: \$120.00 annually; United States: US\$144.00 annually;  
Other Countries: US\$168.00 annually

Published by the Communications Division  
Statistics Canada, 10-N, R.H. Coats Bldg., Ottawa K1A 0T6.

Senior Editor: Greg Thomson (613-951-1187)  
Editor: Tim Prichard (613-951-1103)

Published by authority of the Minister responsible for Statistics Canada. © Minister of Industry, Science and Technology, 1992. All rights reserved. No part of this publication may be reproduced, stored in a retrieval system or transmitted in any form or by any means, electronic, mechanical, photocopying, recording or otherwise without prior written permission from Licence Services, Marketing Division, Statistics Canada, Ottawa, Ontario, Canada K1A 0T6.

---

## REGIONAL REFERENCE CENTRES

---

Statistics Canada's regional reference centres provide a full range of the agency's products and services. Each reference centre is equipped with a library and a sales counter where users can consult or purchase publications, microcomputer and CD-ROM diskettes, microfiche, maps and more.

Each centre has facilities to retrieve information from CANSIM and Telichart, Statistics Canada's computerized data retrieval systems. A telephone inquiry service is available with toll-free access for clients who are located outside local calling areas. Many other valuable services – from seminars to consultations – are also offered. Call or write your nearest Statistics Canada regional reference centre for more information.

### **Newfoundland and Labrador**

Advisory Services  
Statistics Canada  
3rd floor  
Viking Building  
Crosbie Road  
St. John's, Newfoundland  
A1B 3P2  
Local calls: 772-4073  
Toll free service: 1-800-563-4255  
Fax: 1-709-772-6433

### **Maritime Provinces**

Advisory Services  
Statistics Canada  
North American Life Centre  
1770 Market Street  
Halifax, Nova Scotia  
B3J 3M3  
Local calls: 426-5331  
Toll free service: 1-800-565-7192  
Fax: 1-902-426-9538

### **Quebec**

Advisory Services  
Statistics Canada  
200 René Lévesque Blvd. W.  
Guy Favreau Complex  
Suite 412, East Tower  
Montreal, Quebec  
H2Z 1X4  
Local calls: 283-5725  
Toll free service: 1-800-361-2831  
Fax: 1-514-283-9350

### **National Capital Region**

Advisory Services  
Statistical Reference Centre (NCR)  
Statistics Canada  
Lobby  
R.H. Coats Building  
Holland Avenue  
Ottawa, Ontario  
K1A 0T6  
Local calls: 951-8116  
If outside the local calling area, please dial  
the toll free number for your province.  
Fax: 1-613-951-0581

### **Ontario**

Advisory Services  
Statistics Canada  
10th Floor  
Arthur Meighen Building  
25 St. Clair Avenue East  
Toronto, Ontario  
M4T 1M4  
Local calls: 973-6586  
Toll free service: 1-800-263-1136  
Fax: 1-416-973-7475

### **Manitoba**

Advisory Services  
Statistics Canada  
MacDonald Building  
Suite 300  
344 Edmonton Street  
Winnipeg, Manitoba  
R3B 3L9  
Local calls: 983-4020  
Toll free service: 1-800-542-3404  
Fax: 1-204-983-7543

### **Saskatchewan**

Advisory Services  
Statistics Canada  
Avord Tower, 9th Floor  
2002 Victoria Avenue  
Regina, Saskatchewan  
S4P 0R7  
Local calls: 780-5405  
Toll free service: 1-800-667-7164  
Fax: 1-306-780-5403

### **Alberta and the Northwest Territories**

Advisory Services  
Statistics Canada  
8th Floor  
Park Square  
10001 Bellamy Hill  
Edmonton, Alberta  
T5J 3B6  
Local calls: 495-3027  
Toll free service: 1-800-282-3907  
Fax: 1-403-495-3026  
N.W.T. – Call collect (403) 495-3028

### **Southern Alberta**

Advisory Services  
Statistics Canada  
First Street Plaza  
Room 401  
138-4th Avenue South East  
Calgary, Alberta  
T2G 4Z6  
Local calls: 292-6717  
Toll free service: 1-800-472-9708  
Fax: 1-403-292-4958

### **British Columbia and the Yukon**

Advisory Services  
Statistics Canada  
Federal Building, Sinclair Centre  
757 West Hastings Street  
Suite 440F  
Vancouver, B.C. V6C 3C9  
Local calls: 666-3691  
Toll free service:  
1-800-663-1551 (except Atlin, B.C.)  
Fax: 1-604-666-4863  
Yukon and Atlin, B.C. Zenith 08913



# The Daily

Statistics Canada

## Index to Data Releases

October 1992

Subject	Reference Period	Release Date
<b>Abrasives Industry</b>	1990 Annual Survey of Manufactures	October 16, 1992
<b>Adult Correctional Services in Canada</b>	1991-92	October 22, 1992
<b>Arson in Canada</b>	1991	October 9, 1992
<b>Asphalt Roofing</b>	September 1992	October 30, 1992
<b>Aviation Statistics Centre Service Bulletin</b>	October 1992	October 22, 1992
<b>Boatbuilding and Repair Industry</b>	1990 Annual Survey of Manufactures	October 19, 1992
<b>Bread and Other Bakery Products Industry</b>	1990 Annual Survey of Manufactures	October 30, 1992
<b>Brewery Products Industry</b>	1990 Annual Survey of Manufactures	October 23, 1992
<b>Broad Knitted Fabric Industry</b>	1990 Annual Survey of Manufactures	October 5, 1992
<b>Building Permits</b>	August 1992	October 30, 1992
<b>Canada's International Transactions in Securities</b>	August 1992	October 22, 1992
<b>Canadian Child Care in Context: Perspectives from the Provinces and Territories</b>		October 15, 1992
<b>Canadian Civil Aviation Statistics</b>	August 1992	October 8, 1992
<b>Canadian Composite Leading Indicator</b>	July 1992	October 2, 1992
<b>Canadian Economic Observer</b>	October 1992	October 22, 1992
<b>Canadian Social Trends</b>	Autumn 1992	October 16, 1992
<b>Canned and Preserved Fruit and Vegetable Industry</b>	1990 Annual Survey of Manufactures	October 5, 1992
<b>CANSIM Time Series Directory</b>	1992	October 1, 1992
<b>Cement</b>	August 1992	October 5, 1992
	September 1992	October 29, 1992
<b>Children's Clothing Industry</b>	1990 Annual Survey of Manufactures	October 5, 1992
<b>Coal and Coke Statistics</b>	July 1992	October 2, 1992



Statistics  
Canada

Statistique  
Canada

Canada

# Index to Data Releases, October 1992

Subject	Reference Period	Release Date
Commercial Trailer Industry	1990 Annual Survey of Manufactures	October 5, 1992
Communications and Energy Wire and Cable Industry	1990 Annual Survey of Manufactures	October 16, 1992
Construction and Mining Machinery and Materials Handling Equipment Industry	1990 Annual Survey of Manufactures	October 23, 1992
Construction Type Plywood	August 1992	October 26, 1992
Construction Union Wage Rate Index	September 1992	October 23, 1992
Consumer Price Index	September 1992	October 15, 1992
Corrugated Box Industry	1990 Annual Survey of Manufactures	October 9, 1992
Corrugated Boxes and Wrappers	September 1992	October 23, 1992
Crude Oil and Natural Gas	June 1992	October 14, 1992
	July 1992	October 30, 1992
Dairy Review	August 1992	October 14, 1992
Department Store Sales	September 1992	October 16, 1992
Department Store Sales and Stocks	August 1992	October 22, 1992
Department Store Sales by Province and Metropolitan Area	August 1992	October 9, 1992
E-STAT: A New Electronic Learning Package for Canadian Schools		October 20, 1992
Electric Lamp and Shade Industry (Except Bulb and Tube)	1990 Annual Survey of Manufactures	October 23, 1992
Electric Lamps	September 1992	October 21, 1992
	Third Quarter 1992	October 21, 1992
Electric Power Statistics	July 1992	October 2, 1992
Electric Storage Batteries	August 1992	October 7, 1992
Employment, Earnings and Hours	August 1992	October 27, 1992
Estimates of Labour Income	July 1992	October 7, 1992
Export and Import Price Indexes	August 1992	October 16, 1992
Farm Product Price Index	August 1992	October 8, 1992
Feed Industry	1990 Annual Survey of Manufactures	October 27, 1992
Field Crop Reporting Series No. 7: September Estimate of Production of Principal Field Crops, Canada	1992	October 7, 1992
Fish Products Industry	1990 Annual Survey of Manufactures	October 30, 1992
Fluid Milk Industry	1990 Annual Survey of Manufactures	October 30, 1992
Focus on Culture	Autumn 1992	October 23, 1992
Folding Carton and Set-up Box Industry	1990 Annual Survey of Manufactures	October 5, 1992
Footwear Statistics	August 1992	October 7, 1992
Foundation Garment Industry	1990 Annual Survey of Manufactures	October 5, 1992
Frozen Fruit and Vegetable Industry	1990 Annual Survey of Manufactures	October 5, 1992
Fruit and Vegetable Production	October 1992	October 9, 1992
Fur Goods Industry	1990 Annual Survey of Manufactures	October 9, 1992
Glove Industry	1990 Annual Survey of Manufactures	October 9, 1992
Gypsum Products	August 1992	October 1, 1992
Gypsum Products Industry	1990 Annual Survey of Manufactures	October 19, 1992

# Index to Data Releases, October 1992

Subject	Reference Period	Release Date
Health and Activity Limitation Survey	1991 Census	October 13, 1992
Health Reports	Second Quarter 1992	October 29, 1992
Heating Equipment Industry	1990 Annual Survey of Manufactures	October 5, 1992
Help-wanted Index	September 1992	October 7, 1992
Homeowner Repair and Renovation Expenditure in Canada	1991	October 29, 1992
Homicide in Canada	1991	October 6, 1992
Industrial Chemicals and Synthetic Resins	August 1992	October 2, 1992
Industrial Product Price Index	September 1992	October 28, 1992
Iron Foundries	1990 Annual Survey of Manufactures	October 9, 1992
Labour Force Income Profiles	1990	October 5, 1992
Labour Force Survey	September 1992	October 9, 1992
Labour Market Activity Survey - Microdata Tapes	1990	October 14, 1992
Lighting Fixture Industry	1990 Annual Survey of Manufactures	October 23, 1992
Livestock Report	October 1, 1992	October 29, 1992
Local Government Long-term Debt	September 1992	October 23, 1992
Machine Shop Industry	1990 Annual Survey of Manufactures	October 5, 1992
Meat and Meat Products Industry (Except Poultry)	1990 Annual Survey of Manufactures	October 30, 1992
Men's and Boys' Coat Industry	1990 Annual Survey of Manufactures	October 27, 1992
Men's and Boy's Pants Industry	1990 Annual Survey of Manufactures	October 5, 1992
Men's and Boys' Suit and Jacket Industry	1990 Annual Survey of Manufactures	October 9, 1992
Milling and Crushing Statistics	August 1992	October 15, 1992
Mineral Wool Including Fibrous Glass Insulation	September 1992	October 23, 1992
Monthly Survey of Manufacturing	August 1992	October 16, 1992
Motor Carrier Freight Quarterly Survey (Large Carriers)	Second Quarter 1992	October 5, 1992
Motor Vehicle Engine and Engine Parts Industry	1990 Annual Survey of Manufactures	October 5, 1992
Motor Vehicle Stampings Industry	1990 Annual Survey of Manufactures	October 9, 1992
Motor Vehicle Steering and Suspension Parts Industry	1990 Annual Survey of Manufactures	October 5, 1992
Motor Vehicle Wheel and Brake Industry	1990 Annual Survey of Manufactures	October 16, 1992
Motor Vehicle Wiring Assemblies Industry	1990 Annual Survey of Manufactures	October 5, 1992
Narrow Fabric Industry	1990 Annual Survey of Manufactures	October 27, 1992
New Housing Price Index	August 1992	October 9, 1992
New Motor Vehicle Sales	August 1992	October 9, 1992
Non-commercial Trailer Industry	1990 Annual Survey of Manufactures	October 5, 1992
Non-metallic Mineral Insulating Materials Industry	1990 Annual Survey of Manufactures	October 27, 1992

# Index to Data Releases, October 1992

Subject	Reference Period	Release Date
Office, Store and Business Machine Industry	1990 Annual Survey of Manufactures	October 9, 1992
Oil Pipeline Transport	July 1992	October 20, 1992
Oils and Fats	August 1992	October 14, 1992
Other Clothing and Apparel Industries	1990 Annual Survey of Manufactures	October 30, 1992
Other Commercial Printing Industries	1990 Annual Survey of Manufactures	October 23, 1992
Other Concrete Products Industries	1990 Annual Survey of Manufactures	October 5, 1992
Other Converted Paper Products Industries	1990 Annual Survey of Manufactures	October 5, 1992
Other Dairy Products Industries	1990 Annual Survey of Manufactures	October 30, 1992
Other Electrical Products Industries, including Telecommunication Equipment Industry	1990 Annual Survey of Manufactures	October 30, 1992
Other Food Products Industries, including Malt and Malt Flour Industry	1990 Annual Survey of Manufactures	October 30, 1992
Other Machinery and Equipment Industries	1990 Annual Survey of Manufactures	October 16, 1992
Other Manufactured Products Industries	1990 Annual Survey of Manufactures	October 16, 1992
Other Metal Fabricating Industries	1990 Annual Survey of Manufactures	October 16, 1992
Other Motor Vehicle Accessories, Parts and Assemblies Industries	1990 Annual Survey of Manufactures	October 23, 1992
Other Non-metallic Mineral Products Industries	1990 Annual Survey of Manufactures	October 30, 1992
Other Stamped and Pressed Metal Products Industries	1990 Annual Survey of Manufactures	October 23, 1992
Other Textile Products Industries including Tire Cord Fabric Industry	1990 Annual Survey of Manufactures	October 16, 1992
Pack of Processed Strawberries	1992	October 30, 1992
Particleboard, Waferboard and Fibreboard	August 1992	October 14, 1992
Passenger Bus and Urban Transit Statistics	August 1992	October 15, 1992
Performing Arts Survey	1990-91	October 5, 1992
Plastic and Synthetic Resin Industry	1990 Annual Survey of Manufactures	October 5, 1992
Plastic Parts and Accessories for Motor Vehicles Industry	1990 Annual Survey of Manufactures	October 16, 1992
Plastic Pipe and Pipe Fittings Industry	1990 Annual Survey of Manufactures	October 5, 1992
Platemaking, Typesetting and Bindery Industry	1990 Annual Survey of Manufactures	October 16, 1992
Police Personnel and Expenditures in Canada	1991	October 23, 1992
Postcensal Estimates of Population by Age, Sex and Marital Status for Canada, the Provinces and Territories	June 1, 1992	October 21, 1992
Preliminary Statement of Canadian International Trade	August 1992	October 16, 1992
Process Cheese and Instant Skim Milk Powder	August 1992	October 6, 1992

# Index to Data Releases, October 1992

Subject	Reference Period	Release Date
Processed Fruits and Vegetables	August 1992	October 16, 1992
Production and Value of Honey	1991-92	October 28, 1992
Production of Eggs	August 1992	October 15, 1992
Production, Shipments and Stocks of Sawmills East of the Rockies	August 1992	October 26, 1992
Production, Shipments and Stocks on Hand of Sawmills in British Columbia	August 1992	October 26, 1992
Profile of Census Metropolitan Areas and Census Agglomerations - Part A	1991 Census	October 14, 1992
Profile of Federal Electoral Districts - Part A	1991 Census	October 7, 1992
Provincial Government Finance - Financial Management System Basis	1992-93 Estimates and 1991-92 Revised Estimates	October 26, 1992
Provincial Real Gross Domestic Product by Industry	1987-1991	October 28, 1992
Pulpwood and Wood Residue Statistics	August 1992	October 14, 1992
Railroad Rolling Stock Industry	1990 Annual Survey of Manufactures	October 16, 1992
Railway Carloadings	August 1992	October 9, 1992
	Seven-day Period Ending September 21, 1992	October 6, 1992
	Nine-day Period Ending September 30, 1992	October 15, 1992
	Seven-day Period Ending October 7, 1992	October 16, 1992
	Seven-day Period Ending October 14, 1992	October 29, 1992
	July 1992	October 20, 1992
Railway Operating Statistics		
Raw Materials Price Index - Early Estimates	September 1992	October 9, 1992
Raw Materials Price Index	September 1992	October 28, 1992
Ready-mix Concrete Industry	1990 Annual Survey of Manufactures	October 19, 1992
Real Gross Domestic Product at Factor Cost by Industry	August 1992	October 30, 1992
Reference Map Series - Census Metropolitan Areas, Census Agglomerations and Census Tracts	1991 Census	October 2, 1992
Refractories Industry	1990 Annual Survey of Manufactures	October 16, 1992
Restaurants, Caterers and Taverns	August 1992	October 21, 1992
Retail Trade	August 1992	October 21, 1992
Rigid Insulating Board	September 1992	October 29, 1992
Sales of Natural Gas	August 1992	October 20, 1992
Sales of Refined Petroleum Products	September 1992	October 29, 1992
Sawmill and Planing Mill Products Industry	1990 Annual Survey of Manufactures	October 9, 1992
Selected Financial Indexes	September 1992	October 23, 1992
Selected Marriage Statistics - Canada	1921-1990	October 1, 1992
Shipbuilding and Repair Industry	1990 Annual Survey of Manufactures	October 23, 1992
Shipments of Rolled Steel	August 1992	October 15, 1992
Short Article Series: Me a Centenarian? Why Not!	1991 Census of Canada	October 19, 1992
Short-term Expectations Survey		October 6, 1992



1010115140

Index to Data Releases, October 1992

Subject	Reference Period	Release Date
Soft Drink Industry	1990 Annual Survey of Manufactures	October 23, 1992
Soft Drinks	September 1992	October 21, 1992
Specified Domestic Electrical Appliances	August 1992	October 7, 1992
Sporting Goods Industry	1990 Annual Survey of Manufactures	October 5, 1992
Statistical Portrait of Elementary and Secondary Education in Canada		October 8, 1992
Steel Pipe and Tubing	August 1992	October 9, 1992
Steel Primary Forms	August 1992	October 8, 1992
	Week Ending September 26, 1992	October 1, 1992
	Week Ending October 3, 1992	October 8, 1992
	Week Ending October 10, 1992	October 15, 1992
	Week Ending October 17, 1992	October 22, 1992
	Week Ending October 24, 1992	October 29, 1992
Steel Wire and Specified Wire Products	August 1992	October 7, 1992
Stocks of Frozen Meat Products	October 1, 1992	October 26, 1992
Stocks of Frozen Poultry Products	October 1, 1992	October 19, 1992
Sugar Sales	September 1992	October 8, 1992
Supply and Disposition of Major Grains and Oilseeds	1991-92	October 5, 1992
Telephone Statistics	August 1992	October 16, 1992
Tobacco Products	September 1992	October 16, 1992
Toilet Preparations Industry	1990 Annual Survey of Manufactures	October 5, 1992
Trade Data on CD-ROM	1990-91	October 21, 1992
Travel Between Canada and Other Countries	August 1992	October 16, 1992
Travel-log	Autumn 1992	October 27, 1992
Truck and Bus Body Industry	1990 Annual Survey of Manufactures	October 5, 1992
Unemployment Insurance Statistics	August 1992	October 28, 1992
Wholesale Trade	1989	October 15, 1992
	August 1992	October 22, 1992
Women's Coat and Jacket Industry	1990 Annual Survey of Manufactures	October 9, 1992
Wooden Household Furniture Industry	1990 Annual Survey of Manufactures	October 9, 1992