



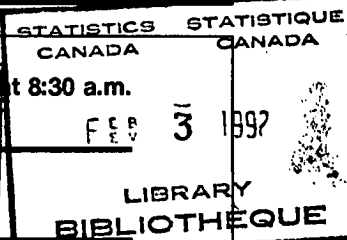
# The Daily

Statistics Canada

Monday, February 3, 1992

**NOT FOR LOAN**  
**NE S'EMPRUNTE PAS**

For release



## MAJOR RELEASE

- **Canadian Composite Leading Indicator, November 1991**  
Growth in the leading indicator slowed again, with only a 0.4% gain in November, the eighth straight monthly increase.

2

## DATA AVAILABILITY ANNOUNCEMENTS

Gypsum Products, December 1991

4

Railway Carloadings, Seven-day Period Ending January 21, 1992

4

## PUBLICATIONS RELEASED

5

**INDEX TO DATA RELEASES: January 1992**



Statistics  
Canada

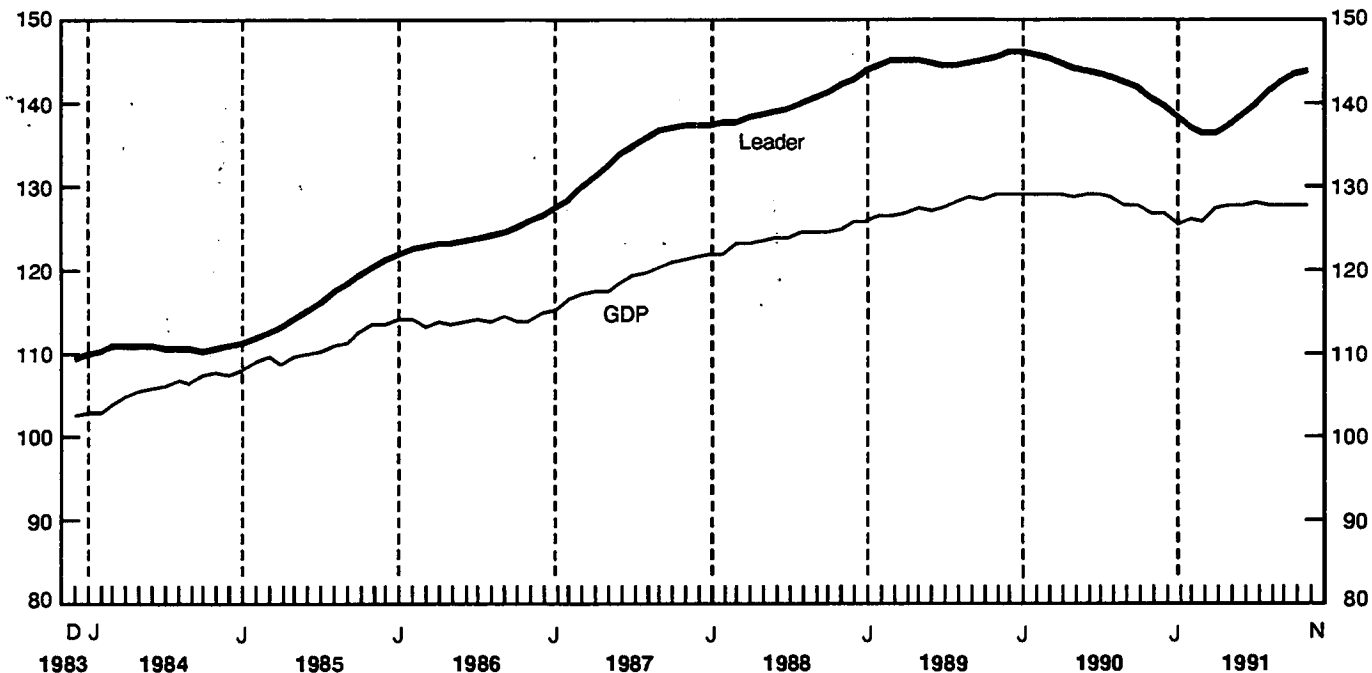
Statistique  
Canada

Canada

## MAJOR RELEASE

### Composite Leading Indicator and GDP

1981 = 100



### Canadian Composite Leading Indicator

November 1991

Growth in the leading indicator continued to decelerate, from 0.6% in October to 0.4% in November. This increase was below the average recorded after eight months in previous recoveries, and is consistent with hesitant growth in the economy. The number of components declining rose from one to three out of 10, with downturns in housing and the stock market. However, the stock market rose strongly at the turn of the year, in response to a sharp drop in U.S. interest rates.

The indicators of household demand weakened markedly, as labour market conditions remained sluggish. After a downturn in sales of durable goods due to slow auto sales in October, the housing index also faltered in November. The housing index had grown steadily since March, contributing much of the initial upturn of the overall index in the spring. Furniture and appliance sales remained positive.

The growth of new orders for durable goods slowed from 1.8% in October to 0.6% in November, due to declines in industries related to business investment. Exports of aircraft, machinery and industrial goods fell during November, while employment in business services weakened again. Shipments also eased, which slowed the growth of their ratio to inventories to only 0.01 points. The average workweek remained unchanged.

The financial market indicators remained muted. The stock market fell, although it subsequently recovered in December. The money supply rose 0.3% in November, after no growth in October.

The growth of the U.S. leading indicator also slowed, from 0.5% in October to 0.3% in November, largely the result of another sharp drop in consumer confidence. Orders for durable goods firmed in November, housing starts rose in December, and the stock market rebounded in January.

**Available on CANSIM: matrix 191.**

For further information on this release, or about the next release dates, contact Francine Roy (613-951-3627), Current Economic Analysis Division.

For more information on the economy, order the February issue of *Canadian Economic Observer* (11-010, \$22/\$220), available the week of February 17-21. See "How to Order Publications".

**Canadian Leading Indicators**

	Percentage Change			Level	
	September	October	November	October	November
<b>Composite Leading Indicator (1981 = 100)</b>					
Smoothed	0.8	0.6	0.4	143.5	144.1
Unsmoothed	-0.1	-0.1	0.1	144.0	144.1
<b>Retail trade</b>					
Furniture and appliance sales	0.2	0.1	0.1	986 <sup>4</sup>	987 <sup>4</sup>
Other durable goods sales	0.1	-0.7	-0.8	3,567 <sup>4</sup>	3,539 <sup>4</sup>
<b>Housing index<sup>1</sup></b>	1.1	0.2	-1.0	129.2	127.9
<b>Manufacturing</b>					
New orders - durables	2.3	1.8	0.6	9,311 <sup>4</sup>	9,369 <sup>4</sup>
Shipment to inventory ratio (finished goods) <sup>2</sup>	0.02	0.03	0.01	1.46	1.47
Average workweek (hours)	0.3	0.3	0.0	38.0	38.0
<b>Business and personal services employment (thousands)</b>	0.5	0.4	0.3	1,800	1,806
<b>United States composite leading index (1967 = 100)</b>	0.6	0.5	0.3	193.4	194.0
<b>TSE300 stock price index (1975 = 1000)</b>	0.0	0.1	-0.1	3,511	3,509
<b>Money supply (M1) (\$1981)<sup>3</sup></b>	0.3	0.0	0.3	23,967 <sup>4</sup>	24,029 <sup>4</sup>

<sup>1</sup> Composite index of housing starts (units) and house sales (MLS).

<sup>2</sup> Difference from previous month.

<sup>3</sup> Deflated by the consumer price index for all items.

<sup>4</sup> Millions of 1981 dollars.

---

## DATA AVAILABILITY ANNOUNCEMENTS

---

### Gypsum Products

December 1991

Manufacturers shipped 12 981 thousand square metres of plain gypsum wallboard in December 1991, down 10.5% from the 14 511 thousand square metres shipped in December 1990 and down 28.1% from the 18 042 thousand square metres shipped in November 1991.

Year-to-date shipments were 192 734 thousand square metres, a decrease of 23.8% from the January to December 1990 period.

**Available on CANSIM:** matrices 39 and 122 (series 11).

The December 1991 issue of *Gypsum Products* (44-003, \$5/\$50) will be available at a later date. See "How to Order Publications".

For more detailed information on this release, please contact Roland Joubert (613-951-3527), Industry Division. ■

### Railway Carloadings

Seven-day Period Ending January 21, 1992

#### Highlights

- Revenue freight loaded by railways in Canada during the period totalled 4.6 million tonnes, an increase of 5.5% over the same period last year.
- Piggyback traffic decreased 4.4% from the same period last year. The number of cars loaded decreased 6.6% during the same period.
- The tonnage of revenue freight loaded to date this year decreased 10.2% from 1991.

**Note:** Piggyback traffic includes trailers and containers on flat cars. Piggyback traffic numbers are included in total carload traffic. All 1991 figures and 1992 cumulative data have been revised.

For more detailed information on this release, contact Angus MacLean (613-951-2484), Surface Transport Unit, Transportation Division. ■

**The  
Daily**

### Statistics Canada's Official Release Bulletin for Statistical Information

Catalogue 11-001E. Price: Canada: \$120.00 annually; United States: US\$144.00 annually; Other Countries: US\$168.00 annually

Published by the Communications Division  
Statistics Canada, 10-L, R.H. Coats Bldg., Ottawa K1A 0T6.

Senior Editor: Greg Thomson (613-951-1116)  
Editor: Tim Prichard (613-951-1103)

Published by authority of the Minister responsible for Statistics Canada. © Minister of Industry, Science and Technology, 1992. All rights reserved. No part of this publication may be reproduced, stored in a retrieval system or transmitted in any form or by any means, electronic, mechanical, photocopying, recording or otherwise without prior written permission from Chief, Author Services, Publications Division, Statistics Canada, Ottawa, Ontario, Canada K1A 0T6.

---

## PUBLICATIONS RELEASED

---

**Production and Disposition of Tobacco Products,**  
December 1991.

**Catalogue number 32-022**

(Canada: \$5/\$50; United States: US\$6/US\$60;  
Other Countries: US\$7/US\$70).

**Production and Inventories of Process Cheese  
and Instant Skim Milk Powder, December 1991.**

**Catalogue number 32-024**

(Canada: \$5/\$50; United States: US\$6/US\$60;  
Other Countries: US\$7/US\$70).

**Restaurant, Caterer and Tavern Statistics,**  
September 1991.

**Catalogue number 63-011**

(Canada: \$6.10/\$61; United States: US\$7.30/US\$73;  
Other Countries: US\$8.50/US\$85).

**Wholesale Trade Statistics, Wholesale Merchants,  
Agents and Brokers, 1988.**

**Catalogue number 63-226**

(Canada: \$34; United States: US\$41;  
Other Countries: US\$48).

**Summary of Canadian International Trade,**  
November 1991.

**Catalogue number 65-001**

(Canada: \$18.20/\$182; United States: US\$21.80/  
US\$218; Other Countries: US\$25.50/US\$255).

**Canada's Balance of International Payments,**  
Third Quarter 1991.

**Catalogue number 67-001**

(Canada: \$27.50/\$110; United States: US\$38.50/  
US\$132; Other Countries: US\$38.50/US\$154).

---

The paper used in this publication meets the minimum  
requirements of American National Standard for  
Information Sciences – Permanence of Paper for Printed  
Library Materials, ANSI Z39.48 – 1984.



---

### How to Order Publications

*Statistics Canada publications may be purchased by  
mail order from Publication Sales, Room 1710, Main  
Building, Statistics Canada, Ottawa K1A 0T6 or phone  
613-951-7277.*

*Please enclose cheque or money order payable to the  
Receiver General for Canada/Publications and provide  
full information on publications required (catalogue  
number, title, issue). Canadian customers, please  
remember to add 7% Goods and Services Tax.*

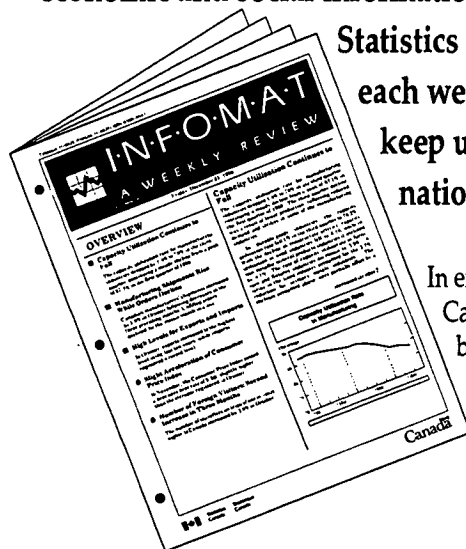
*Publications may also be ordered through Statistics  
Canada's offices in St. John's, Halifax, Montreal, Ottawa,  
Toronto, Winnipeg, Regina, Edmonton, Calgary and  
Vancouver, or from authorized bookstore agents or other  
booksellers.*

*A national toll-free telephone order service is in  
operation at Statistics Canada. The toll-free line  
(1-800-267-6677) can be used by Canadian customers  
for the ordering of Statistics Canada products and  
services.*

# I·N·F·O·M·A·T

## Don't start your week without it

Get a jump on your work week by making sure you have the most current economic and social information in Canada. Travelling by first class mail or courier,



Statistics Canada's digest, Infomat, arrives at the beginning of each week to help you monitor key economic indicators and keep up with the most current data releases from Canada's national statistical agency.

In eight fact-filled pages, Infomat highlights the findings of Statistics Canada surveys and brings them to your desk each week, often long before detailed reports are published. Throughout the year you'll get the first results of over 100 ongoing surveys and many special surveys—from manufacturing shipments to the health of Canadians or post graduate employment to part-time workers.

### Each week, Infomat presents you with,

- concise summaries of fresh facts from over 100 ongoing surveys
- charts and graphs that let you instantly scan the trends
- Overview - an outline of the subjects covered in each issue that you can scan in 30 seconds
- guidance on how to obtain special reports to assist you in your more detailed research.
- Current Trends and Latest Monthly Statistics sections that bring you up to date on the Consumer Price Index, Gross Domestic Product and 21 other key monthly series

Managers, analysts and researchers who are responsible for keeping up to date on changes in Canada's economic and social climate can count on Infomat — as a quick overview of the latest trends and as a weekly reminder of key indicators and data releases. Many subscribers use Infomat's highlights to add authority to their industry analyses, investment plans or corporate reports.

To order Infomat (11-002E), 50 issues annually for \$125 in Canada, US\$150 in the U.S. and US\$175 in other countries, write to Publications Sales and Service, Statistics Canada, Ottawa, Canada, K1A 0T6. For faster service, use your VISA or MasterCard and call toll-free in Canada, 1-800-267-6677.



# The Daily

Statistics Canada

## Index to Data Releases January 1992

Subject	Reference Period	Release Date
<b>Air Carrier Operations in Canada</b>	January-March 1991	January 14, 1992
<b>Air Charter Statistics</b>	1990	January 20, 1992
<b>Asphalt Roofing</b>	December 1991	January 30, 1992
<b>Aviation Statistics Centre Service Bulletin</b>	October 1991	January 20, 1992
<b>Break and Enter in Canada</b>	1980-90	January 28, 1992
<b>Building Permits</b>	October 1991	January 6, 1992
	November 1991	January 31, 1992
<b>Canada's International Transactions in Securities</b>	November 1991	January 23, 1992
<b>Canadian Civil Aviation Statistics</b>	November 1991	January 21, 1992
<b>Canadian Composite Leading Indicator</b>	October 1991	January 7, 1992
<b>Canadian Economic Observer</b>	January 1992	January 23, 1992
<b>Canadian Mining</b>	1989	January 8, 1992
<b>Cancer in Canada</b>	1987-1988	January 17, 1992
<b>Cement</b>	November 1991	January 7, 1992
	December 1991	January 31, 1992
<b>Characteristics of International Travellers</b>	First and Second Quarters 1990	January 10, 1992
<b>Coal and Coke Statistics</b>	October 1991	January 10, 1992
	November 1991	January 30, 1992
<b>Construction Type Plywood</b>	November 1991	January 20, 1992
<b>Construction Union Wage Rate Index</b>	December 1991	January 23, 1992
<b>Consumer Price Index</b>	December 1991	January 21, 1992
<b>Corrugated Boxes and Wrappers</b>	December 1991	January 23, 1992
<b>Crude Oil and Natural Gas</b>	September 1991	January 7, 1992
	October 1991	January 30, 1992



Statistics  
Canada

Statistique  
Canada

Canada

# Index to Data Releases, January 1992

Subject	Reference Period	Release Date
Dairy Review	November 1991	January 15, 1992
Deliveries of Major Grains	November 1991	January 22, 1992
Department Store Sales	December 1991	January 15, 1992
Department Store Sales by Province and Metropolitan Area	November 1991	January 10, 1992
Department Store Sales and Stocks	November 1991	January 22, 1992
Earnings of Men and Women	1990	January 27, 1992
Electric Lamps	December 1991	January 23, 1992
	Fourth Quarter 1991	January 23, 1992
Electric Power Statistics	October 1991	January 6, 1992
	November 1991	January 31, 1992
Electric Power Selling Price Indexes	September - December 1991	January 29, 1992
Electric Storage Batteries	November 1991	January 13, 1992
	December 1991	January 31, 1992
Employment, Earnings and Hours	October 1991	January 3, 1992
	November 1991	January 30, 1992
Estimates of Labour Income	October 1991	January 13, 1992
Exploration, Development and Capital Expenditures, by Mining Companies	Actual 1990	January 30, 1992
Export and Import Price Indexes	November 1992	January 17, 1992
Family Food Expenditure in Canada - Selected Cities	1990	January 27, 1992
Farm Product Price Index	November 1991	January 14, 1992
Field Crop Reporting Series, No. 1		January 31, 1992
Footwear Statistics	November 1991	January 13, 1992
Fruit and Vegetable Production	December 1991	January 10, 1992
Grain Marketing Situation Report	November 1991	January 6, 1992
	December 1991	January 29, 1992
Health Reports	Third Quarter 1991	January 29, 1992
Help-wanted Index	December 1991	January 8, 1992
Industrial Chemicals and Synthetic Resins	November 1991	January 8, 1992
Industrial Product Price Index	November 1991	January 3, 1992
	December 1991	January 29, 1992
Labour Force Survey	December 1991	January 10, 1992
Local Government Long-term Debt	December 1991	January 24, 1992
Milling and Crushing Statistics	November 1991	January 14, 1992
Mineral Wool Including Fibrous Glass Insulation	December 1991	January 23, 1992
Monthly Survey of Manufacturing	November 1991	January 16, 1992
Motor Carrier Freight Quarterly Survey	Second Quarter 1991	January 9, 1992
	Third Quarter 1991	January 29, 1992



# Index to Data Releases, January 1992

Subject	Reference Period	Release Date
<b>New Housing Price Index</b>	November 1991	January 10, 1992
<b>New Motor Vehicle Sales</b>	November 1991	January 9, 1992
<b>Oil Pipeline Transport</b>	October 1991	January 17, 1992
<b>Oils and Fats</b>	November 1991	January 14, 1992
<b>Pack of Processed Pears</b>	1991	January 30, 1992
<b>Pack of Processed Peas</b>	1991	January 24, 1992
<b>Pack of Processed Raspberries</b>	1991	January 23, 1992
<b>Particleboard, Waferboard and Fibreboard</b>	November 1991	January 13, 1992
<b>Passenger Bus and Urban Transit Statistics</b>	October 1991	January 9, 1992
	November 1991	January 30, 1992
<b>Pollution Abatement and Control Survey</b>	1989	January 30, 1992
<b>Preliminary Statement of Canadian International Trade</b>	November 1991	January 17, 1992
<b>Process Cheese and Instant Skim Milk Powder</b>	December 1991	January 30, 1992
<b>Processed Fruits and Vegetables</b>	November 1991	January 20, 1992
<b>Production and Sales of Major Appliances</b>	December 1991	January 28, 1992
<b>Production of Biscuits</b>	December 1991	January 31, 1992
<b>Production of Eggs</b>	November 1991	January 13, 1992
<b>Production, Shipments and Stocks of Sawmills East of the Rockies</b>	November 1991	January 24, 1992
<b>Production, Shipments and Stocks on Hand of Sawmills in British Columbia</b>	November 1991	January 23, 1992
<b>Provincial Economic Accounts</b>	Revised Estimates for 1987-1990	January 31, 1992
<b>Pulpwood and Wood Residue Statistics</b>	November 1991	January 14, 1992
<b>Quarterly Report on Energy Supply-Demand in Canada</b>	Second Quarter 1991	January 20, 1992
<b>Railway Carloadings</b>	November 1991	January 30, 1992
	Seven-day Period Ending December 21, 1991	January 13, 1992
	10-day Period Ending December 31, 1991	January 14, 1992
	Seven-day Period Ending January 7, 1992	January 23, 1992
	Seven-day Period ending January 14, 1992	January 29, 1992
<b>Raw Materials Price Index</b>	November 1991	January 3, 1992
	December 1991	January 29, 1992
<b>Real Gross Domestic Product at Factor Cost by Industry</b>	November 1991	January 31, 1992



1010083469

Index to Data Releases, January 1992

Subject	Reference Period	Release Date
<b>Restaurants, Caterers and Taverns</b>	October 1991	January 3, 1992
	November 1991	January 27, 1992
<b>Retail Trade</b>	November 1991	January 21, 1992
<b>Rigid Insulating Board</b>	December 1991	January 31, 1992
<b>Road Motor Vehicles, Registrations</b>	1990	January 6, 1992
<b>Sales of Natural Gas</b>	November 1991	January 21, 1992
<b>Sales of Refined Petroleum Products</b>	November 1991	January 3, 1992
	December 1991	January 30, 1992
<b>Selected Financial Indexes</b>	December 1991	January 23, 1992
<b>Shipments of Solid Fuel-Burning Heating Products</b>	Fourth Quarter 1991	January 31, 1992
<b>Shipments of Rolled Steel</b>	November 1991	January 17, 1992
<b>Short Term Expectations Survey</b>		January 7, 1992
<b>Small Business Profiles</b>	1991 Edition	January 24, 1992
<b>Soft Drinks</b>	December 1991	January 16, 1992
<b>Specified Domestic Electrical Appliances</b>	November 1991	January 13, 1992
<b>Statement of Farming Income and Expenses</b>	1990	January 14, 1992
<b>Steel Primary Forms</b>	November 1991	January 13, 1992
	Week Ending December 21, 1991	January 9, 1992
	Week Ending December 28, 1991	January 9, 1992
	Week Ending January 4, 1992	January 9, 1992
	Week Ending January 11, 1992	January 16, 1992
	Week Ending January 18, 1992	January 23, 1992
	Week Ending January 25, 1992	January 30, 1992
<b>Steel Pipe and Tubing</b>	November 1991	January 10, 1992
<b>Steel Wire and Specified Wire Products</b>	November 1991	January 9, 1992
<b>Stocks of Frozen Poultry Products</b>	January 1, 1992	January 17, 1992
<b>Stocks of Frozen Meat Products</b>	January 1, 1992	January 27, 1992
<b>Sugar Sales</b>	December 1991	January 9, 1992
<b>Telephone Statistics</b>	November 1991	January 17, 1992
<b>Tobacco Products</b>	December 1991	January 24, 1992
	December 1991	January 31, 1992
<b>Travel Between Canada and Other Countries</b>	November 1991	January 17, 1992
<b>Unemployment Insurance Statistics</b>	November 1991	January 29, 1992
<b>Wholesale Trade</b>	November 1991	January 23, 1992