



# The Daily

Statistics Canada

Wednesday, September 2, 1992

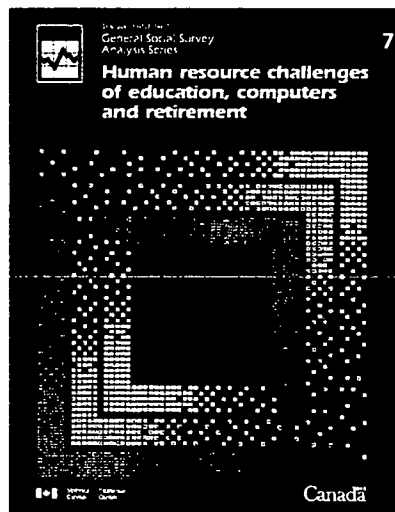
**NOT FOR LOAN**  
**NE S'EMPRUNTE PAS**

STATISTICS CANADA  
STATISTIQUE CANADA  
at 8:30 a.m.  
SEP 2 1992  
LIBRARY  
BIBLIOTHÈQUE

## MAJOR RELEASES

- **General Social Survey Analysis Series: Human Resource Challenges of Education, Computers and Retirement** 3  
Among the persons employed in 1989, some 3.2 million or 26% planned to begin within the next five years an educational program leading to a degree, diploma or certificate.
- **Help-wanted Index, August 1992** 4  
In August, the Help-wanted Index (1981 = 100) fell five points to 62.
- **Farm Input Price Index, Second Quarter 1992** 5  
The Farm Input Price Index was up 0.9% in the second quarter of 1992.

(continued on page 2)



## General Social Survey Analysis Series: Human Resource Challenges of Education, Computers and Retirement

Before 1950, only 4% of those entering studies for their highest degree or diploma reported that their main activity in the previous year had been working at a job or business; by the 1980s, this proportion had increased to 28%.

*General Social Survey Analysis Series: Human Resource Challenges of Education, Computers and Retirement* (11-612E, No. 7, \$40) presents analysis of the 1989 General Social Survey (Cycle 4), which focused on work and education. Three major themes relevant to the development of Canada's human resources guided the analysis: the changing relationship between work and education, computer literacy and use, and retirement attitudes and behaviour. The report was written by Graham S. Lowe of the University of Alberta and is now available. See "How to Order Publications".

For more information, contact Professor Graham S. Lowe (403-492-0487), University of Alberta or Ghislaine Villeneuve (613-951-4995), Housing, Family and Social Statistics Division.

For highlights, turn to page 3 of today's *Daily*.



Statistics  
Canada

Statistique  
Canada

Canada

---

## DATA AVAILABILITY ANNOUNCEMENTS

---

National Income and Expenditure Accounts, Second Quarter 1992, Note to Users	7
Air Passenger Origin and Destination: Canada - United States Report, 1991	7
Air Charter Statistics, First Quarter 1992	7
Footwear Statistics, July 1992	8
Rigid Insulating Board, July 1992	8
Asphalt Roofing, July 1992	8

---

## PUBLICATIONS RELEASED

---

9

---

---

## MAJOR RELEASES

---

### General Social Survey Analysis Series: Human Resource Challenges of Education, Computers and Retirement

#### Highlights

- Among the persons employed in 1989, some 1.7 million or 14% were enrolled in an educational program leading to a degree, diploma or certificate.
- Among the employed persons who held a postsecondary diploma or university degree, 62% were in jobs closely related to their education, while 20% reported no relationship in this regard.
- Among the adult population aged 15 and over in 1989, 9.6 million or 47% reported being able to use a computer. While many persons reported multiple applications of their computer skills, computer game-playing was the most commonly reported use (73% of users), followed by data entry and word processing (63%), recordkeeping (48%), data analysis (32%) and programming (26%).
- Ability to use a computer was highest among residents of Alberta, British Columbia and Ontario, as well as among individuals under age 25.
- More than one-third of those employed at the time of the GSS in 1989 (4.2 million individuals) reported using computers such as mainframes, personal computers and word processors in their job.
- Among workers whose jobs had been greatly or somewhat affected by technological change during the 1984-89 period, two-thirds reported increased skills as a result.
- Only 28% of those formerly employed had retired because of reaching mandatory retirement age. Health reasons were an equally important reason for retirement, cited by 27%.
- At least 43% of retirees reported enjoying life more after retiring than before but 17% enjoyed retired life less.

#### Note to Users

*The General Social Survey (GSS), a continuing program with a five-year cycle, has two principal objectives: to gather data on social trends in order to monitor changes in Canadian society over time, and to provide information on specific social policy issues.*

*The fourth cycle of the GSS was conducted in January and February of 1989 and collected data about education and work histories, current employment and educational activity, job satisfaction and other more material rewards from employment, as well as data about retirement plans and experiences with new workplace technologies. A sample of 9,338 persons aged 15 and over was interviewed in the 10 provinces.*

*A second report, General Social Survey Analysis Series: Quality of Work in the Service Sector (11-612E, No. 6, \$40), covered other aspects of the 1989 GSS and was released in March 1992. A data file from this survey was released in July 1990.*

*General Social Survey Analysis Series: Human Resource Challenges of Education, Computers and Retirement (11-612E, No. 7, \$40) is now available. See "How to Order Publications".*

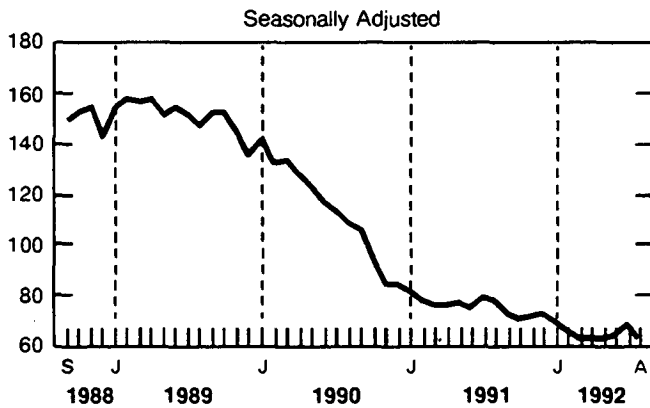
For more information, contact Professor Graham S. Lowe (403-492-0487), University of Alberta or Ghislaine Villeneuve (613-951-4995), Housing, Family and Social Statistics Division. ■

## Help-wanted Index

August 1992

The Help-wanted Index serves as an early indicator of the demand for labour by monitoring changes in the number of help-wanted ads published in 20 major metropolitan areas.

### Help-wanted Index, Canada (1981 = 100)



### Highlights - Seasonally Adjusted

- The Help-wanted Index for Canada (1981 = 100) decreased from 77 in August 1991 to 62 in March 1992, then remained unchanged through May 1992.

before advancing to 63 in June and to 67 in July. In August, the index fell five points to 62, the same level observed in May.

### Changes by Region

- Between July and August 1992, the Help-wanted Index decreased 14% in Quebec (to 69 from 80), 8% in Ontario (to 59 from 64), and 1% in British Columbia (to 69 from 70). The index increased 5% in the Prairie provinces (from 42 to 44) and remained unchanged at 90 in the Atlantic provinces.
- Compared with August 1991, the Help-wanted Index was down in all regions. It fell 22% in the Atlantic provinces, 20% in Ontario, 19% in the Prairie provinces, 17% in Quebec and 15% in British Columbia.

Available on CANSIM: matrix 105 (levels 5 and 7).

Help-wanted Indices for census metropolitan areas and trend-cycle estimates are available on request. The trend-cycle estimates can also be obtained directly from CANSIM.

For further information, contact Carole Lacroix (613-951-4039) or André Picard (613-951-4045), Labour Division (fax: 613-951-4087).

### Help-wanted Index (1981 = 100), Canada and Regions - Seasonally Adjusted

Year and month	Canada	Atlantic Region	Quebec	Ontario	Prairie Region	British Columbia
<b>1991</b>						
August	77	115	83	74	54	81
September	72	107	84	67	47	79
October	70	105	83	66	49	73
November	71	99	88	63	51	73
December	72	104	87	67	49	75
<b>1992</b>						
January	69	110	88	60	46	68
February	65	90	74	61	46	74
March	62	87	74	55	49	67
April	62	85	78	56	44	64
May	62	92	69	60	45	68
June	63	92	70	59	43	69
July	67	90	80	64	42	70
August	62	90	69	59	44	69

## Farm Input Price Index

Second quarter 1992

The Farm Input Price Index (FIPI, 1986 = 100) for the second quarter 1992 stood at a preliminary 107.6, up 0.9% from the previous quarter but down 2.6% from a year earlier. Of the seven major group indexes which are updated quarterly, five rose and two declined.

- The crop production index increased 4.3% in the second quarter due mainly to a substantial increase in the preliminary index for 1992-93 crop insurance (31.8%). Increases were particularly marked in Saskatchewan (53.7%) and Ontario (34.7%). Also recorded were higher prices for seeds (0.1%), fertilizer (2.1%) and pesticides (2.3%).
- The animal production index increased by 2.1%. Within this major group, prices rose 8.4% for weanling pigs and 3.0% for feeder cattle. Prices for feed were up by 1.5%. Weanling pig prices were 14.6% lower than a year earlier.
- The interest index declined by 2.0% over the quarter as the non-mortgage component was lower by 2.6% and the mortgage component by 0.9%. The interest index was 20.3% lower than a year earlier.
- The machinery and motor vehicle index was down 0.9% from the first quarter, largely because of a 5.6% decrease in petroleum products prices.
- By province, the total FIPI quarterly changes ranged from -0.7% in Quebec, through fractional increases in most other provinces, to 1.6% in Ontario and 2.7% in Saskatchewan.

### Note to Users

*The Farm Input Price Index for the second quarter of 1992 includes the results of a major development of this index within the last 18 months. New or expanded surveys in the crop production, machinery and motor vehicles, building and fencing, and supplies and services major input groups have improved the quality and detail in those areas.*

*In addition to the indexes for Eastern, Western and all of Canada, Farm Input Indexes are now available for the Atlantic Region, Quebec, Ontario, Manitoba, Saskatchewan, Alberta and British Columbia. Indexes for the individual Atlantic Provinces are also calculated as a part of the FIPI production.*

- Each of the regional indexes also recorded quarterly increases: the Eastern Canada FIPI total was 111.5 (up 0.7% from the first quarter but down 2.3% from the second quarter 1991) and the Western Canada index stood at 104.6 (up 1.2% over the quarter but down 2.8% over the year). The most significant index change occurred for the crop production index for Western Canada; it rose by 7.9% in the quarter as the crop insurance index was estimated to have increased 33.8%. By comparison, the crop production index for Eastern Canada declined by 0.4%, as the crop insurance index increase of 22.4% did not offset decreases in the other indexes of this group.

### Available on CANSIM: matrices 2050-2063.

The second quarter 1992 issue of *Farm Input Price Indexes* (62-004, \$12.25/\$49) will be available in September. See "How to Order Publications".

For more detailed information on this release, contact the Information and Current Analysis Unit (613-951-9607), Prices Division. □

**Farm Input Price Indexes**  
(1986 = 100)

		% Change	
	Second Quarter 1992	2nd Quarter 1992/ 1st Quarter 1992	2nd Quarter 1992/ 2nd Quarter 1991
Eastern Canada			
Total Farm Input	111.5	0.7	-2.3
Building and fencing	120.0	-0.1	3.3
Machinery and motor vehicles	117.1	0.1	0.3
Crop production	110.4	-0.4	1.4
Animal production	101.9	2.1	-4.0
Supplies and services	121.5	0.2	4.1
Hired farm labour	135.0	1.5	3.1
Property taxes	123.5	0.0	1.6
Interest	99.1	-1.9	-21.2
Farm rent	123.9	0.0	1.2
Western Canada			
Total Farm Input	104.6	1.2	-2.8
Building and fencing	107.2	2.1	2.2
Machinery and motor vehicles	109.9	-1.2	0.4
Crop production	95.5	7.9	4.9
Animal production	102.6	2.2	-6.6
Supplies and services	107.8	0.8	1.7
Hired farm labour	122.5	-0.2	1.0
Property taxes	120.1	0.0	1.2
Interest	97.8	-2.1	19.8
Farm rent	94.0	0.0	-0.3
Canada			
Total Farm Input	107.6	0.9	-2.6
Building and fencing	114.0	0.9	2.9
Machinery and motor vehicles	112.3	-0.7	0.4
Crop production	100.5	-4.3	3.3
Animal production	102.2	2.1	-5.1
Supplies and services	114.7	0.5	3.0
Hired farm labour	129.3	0.8	2.1
Property taxes	120.8	0.0	1.3
Interest	98.3	-2.0	-20.3
Farm rent	101.6	0.0	0.2

## DATA AVAILABILITY ANNOUNCEMENTS

### National Income and Expenditure Accounts

Second Quarter 1992

#### Note to Users

The National Income and Expenditure Accounts estimates for the second quarter of 1992, released August 31, 1992, contained errors in the chain price and chain volume indexes for government current expenditure on goods and services (Tables 23 and 24, not included in the release in *The Daily*). The aggregates "final domestic demand" and "Gross Domestic Product excluding the value of physical change in inventories" were also affected. The correct values are as follows:

Second quarter 1992

#### Chain Price Index

Government current expenditure on goods and services	124.1
Final domestic demand	122.5
Gross Domestic Product excluding the value of physical change in inventories	124.0

#### Chain Volume Index

Government current expenditure on goods and services	116.5
Final domestic demand	113.0
Gross Domestic Product excluding the value of physical change in inventories	110.5

For further information, contact Chris Jackson (613-951-1799) or Rémi Fournelle (613-951-3791), National Accounts and Environment Division. ■

### Air Passenger Origin and Destination: Canada - United States Report 1991

#### Highlights

- Air passenger statistics showed that again in 1991, the top three transborder city-pairs were Toronto-New York, Montreal-New York and Toronto-Chicago. These three city-pairs reported decreases in traffic of 14%, 11% and 7%, respectively, from 1990.

- According to scheduled air passenger origin and destination data, 8.3 million passengers travelled between Canada and the United States in 1991, down 8% compared to 1990. This was the first annual decrease since 1987. Overall, declines were recorded for each quarter of 1991 compared to the same periods in 1990.
- The number of passengers with a transborder portion in their international journey totalled 783,730 in 1991, down 6% compared to 1990. This represented the first annual decrease since 1987.
- Of the top 25 city-pairs, Toronto appeared in 13 city-pairs while Montreal figured in seven and Vancouver in three. Most of these top 25 city-pairs (21 out of 25) recorded decreases. However, the largest percentage increase (38%) was recorded for Montreal-Chicago.

The 1991 edition of *Air Passenger Origin and Destination: Canada - United States Report* (51-205, \$42) is now available. See "How to Order Publications".

For more detailed information on this publication, contact Lotfi Chahdi (819-997-1386), Aviation Statistics Centre, Transportation Division. ■

### Air Charter Statistics

First Quarter 1992 (Preliminary Data)

- Preliminary first quarter 1992 data indicated that the number of passengers travelling on international charter services increased by 12% compared to the corresponding 1991 figure. International charter operations appeared to be on the rebound following a poor first quarter in 1991.
- The United States region, with 913,000 passengers and the Southern region, with 806,000 passengers, were both well on the way to recovering from 1991's weak charter market.

The Vol. 24, No. 9 issue of *Aviation Statistics Centre Service Bulletin* (51-004, \$9.30/\$93) will be available shortly. See "How to Order Publication".

For more detailed information on this release, contact K. Tieman (819-997-6173), Aviation Statistics Centre, Transportation Division. ■

## Footwear Statistics

July 1992

Canadian manufacturers produced 1,527,278 pairs of footwear in July 1992, an increase of 1.0% from the 1,511,651<sup>r</sup> (revised) pairs produced a year earlier.

Year-to-date production for January to July 1992 totalled 12,735,033<sup>r</sup> pairs of footwear, down 11.1% from the 14,326,056<sup>r</sup> pairs produced during the same period in 1991.

**Available on CANSIM: matrix 8.**

The July 1992 issue of *Footwear Statistics* (33-002, \$5/\$50) will be available at a later date.

For more detailed information on this release, contact Don Grant (613-951-5998), Industry Division. ■

## Rigid Insulating Board

July 1992

Shipments of rigid insulating board totalled 2 405 thousand square metres (12.7 mm basis) in July 1992, a decrease of 37.3% compared to 3 837 thousand square metres (12.7 mm basis) shipped in July 1991.

January to July 1992 year-to-date shipments amounted to 16 987 thousand square metres (12.7 mm basis), compared to 21 132 thousand square metres (12.7 mm basis) for the same period in 1991, a decrease of 19.6%.

**Available on CANSIM: matrices 31 (series 1) and 122 (series 4-7).**

The July 1992 issue of *Rigid Insulating Board* (36-002, \$5/\$50) will be available at a later date.

For more detailed information on this release, contact Sandra Bohatyretz (613-951-3531), Industry Division. ■

## Asphalt Roofing

July 1992

Shipments of asphalt shingles totalled 4 027 723 metric bundles in July 1992, a decrease of 8.9% from the 4 423 528 metric bundles shipped a year earlier.

January to July 1992 shipments were 24 459 404 metric bundles, up 7.6% from 22 736 269 metric bundles shipped during the same period in 1991.

**Available on CANSIM: matrices 32 and 122 (series 27 and 28).**

The July 1992 issue of *Asphalt Roofing* (45-001, \$5/\$50) will be available at a later date.

For more detailed information on this release, contact Sandra Bohatyretz (613-951-3531), Industry Division. ■

**The  
Daily**

### Statistics Canada's Official Release Bulletin for Statistical Information

Catalogue 11-001E. Price: Canada: \$120.00 annually; United States: US\$144.00 annually; Other Countries: US\$168.00 annually

Published by the Communications Division  
Statistics Canada, 10-L, R.H. Coats Bldg., Ottawa K1A 0T6.

Senior Editor: Greg Thomson (613-951-1116)  
Editor: Tim Prichard (613-951-1103)

Published by authority of the Minister responsible for Statistics Canada. © Minister of Industry, Science and Technology, 1992. All rights reserved. No part of this publication may be reproduced, stored in a retrieval system or transmitted in any form or by any means, electronic, mechanical, photocopying, recording or otherwise without prior written permission from Chief, Author Services, Publications Division, Statistics Canada, Ottawa, Ontario, Canada K1A 0T6.



---

## PUBLICATIONS RELEASED

---

**General Social Survey Analysis Series: Human Resource Challenges of Education, Computers and Retirement.**

**Catalogue number 11-612E, No. 7**

(Canada: \$40; United States: US\$48; Other Countries: US\$56).

**Cereals and Oilseeds Review, June 1992.**

**Catalogue number 22-007**

(Canada: \$13.80/\$138; United States: US\$16.60/US\$166; Other Countries: US\$19.30/US\$193).

**Railway Operating Statistics, April 1992.**

**Catalogue number 52-003**

(Canada: \$10.50/\$105; United States: US\$12.60/US\$126; Other Countries: US\$14.70/US\$147).

**Wholesale Trade, June 1992.**

**Catalogue number 63-008**

(Canada: \$14.40/\$144; United States: US\$17.30/US\$173; Other Countries: US\$20.20/US\$202).

---

The paper used in this publication meets the minimum requirements of American National Standard for Information Sciences - Permanence of Paper for Printed Library Materials, ANSI Z39.48 - 1984.



---

### How to Order Publications

*Simplify your search for data with the Statistics Canada Catalogue 1992. Using the keyword index, you'll find sources for statistics on all areas of Canadian social and economic activity. For easy access to over 800 Statistics Canada products and services, order the Statistics Canada Catalogue 1992 (11-204E, \$13.95; United States: US\$17; Other Countries: US\$20).*

*You may order Statistics Canada products and services by telephone. From Canada and the United States, call toll-free 1-800-267-6677. From all other locations, call 613-951-7277 (not toll-free).*

*You may purchase Statistics Canada publications by writing to Publication Sales, Room 1710, Main Building, Statistics Canada, Ottawa K1A 0T6.*

*Please enclose a cheque or money order payable to the Receiver General for Canada/Publications. Provide full information on each publication order (catalogue number, title, issue). Canadian customers, please add 7% GST.*

*Publications may also be ordered from Statistics Canada's Regional Reference Centres in St. John's, Halifax, Montreal, Ottawa, Toronto, Winnipeg, Regina, Edmonton, Calgary and Vancouver, or from authorized bookstore agents or other booksellers.*



# INTRODUCING

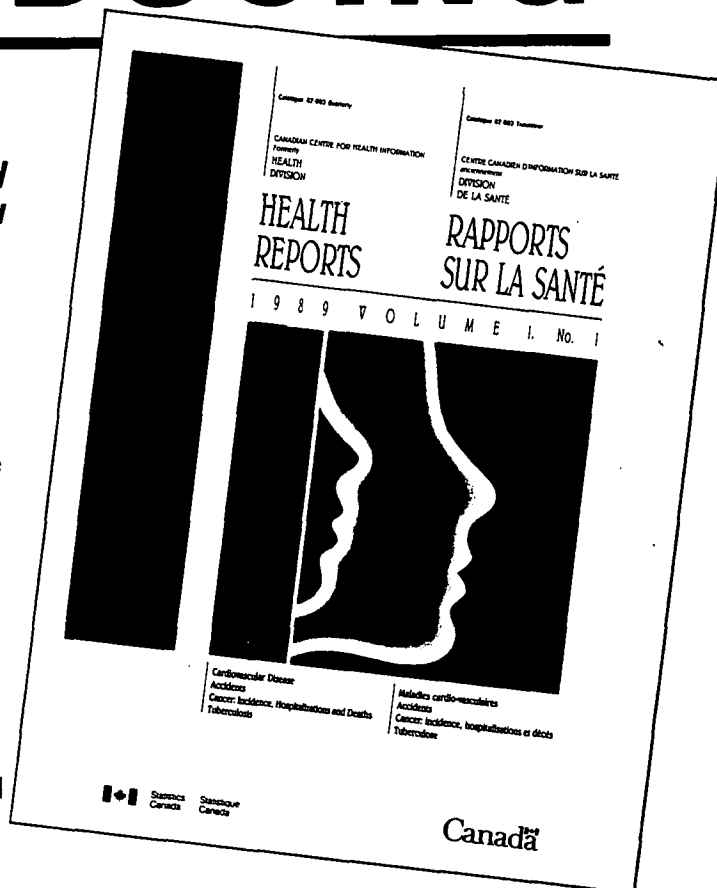
**Statistics Canada's most frequently requested health information - now in one comprehensive quarterly journal**

- **Feature Articles...** on key topics like the results of recent research on cancer, cardio-vascular disease, etiology, and the socio-economic impact of health issues on Canadians
- **Highlights...** capsule summaries of the latest health data released by Statistics Canada
- **Selected Indicators...** to let you track and monitor important health trends on a national, regional or provincial level, including hospital indicators, mortality and morbidity statistics and national health levels

And, every issue of **Health Reports** includes a list of available information and sources to contact for specialized tabulations or custom data.

**Be informed. Don't miss a single issue. Order your subscription today!**

A subscription to **Health Reports** (Catalogue No. 82-003) is \$104 annually in Canada, US\$125 in the United States and US\$146 in other countries.



To order, write to: Publication Sales,  
Statistics Canada, Ottawa, Ontario,  
K1A 0T6, or contact your nearest Statistics  
Canada Regional Reference Centre, listed in  
this publication.

For faster service, fax your order to

**1-613-951-1584**

Or call toll free at

**1-800-267-6677**

and use your VISA or MasterCard.