



The Daily

Statistics Canada

Friday, January 29, 1993

For release at 8:30 a.m.

STATISTICS STATISTIQUE
CANADA CANADA

JAN 29 1993

LIBRARY
BIBLIOTHÈQUE



Years of Ans
Excellence d'excellence

MAJOR RELEASES

- **Real Gross Domestic Product at Factor Cost by Industry, November 1992** 2
Gross Domestic Product at Factor Cost edged down 0.1% in November following four consecutive monthly increases.
- **Employment, Earnings and Hours, November 1992** 5
Industrial aggregate payroll employment rose slightly to 9,910,000, following declines in the preceding five months.
- **Building Permits, November 1992** 11
The preliminary value of building permits issued in Canada declined 7.9% to \$2,086 million in November, down from \$2,266 million (revised) in October.
- **Sales of Refined Petroleum Products, December 1992** 14
Seasonally adjusted, sales of refined petroleum products increased a slight 0.1% from November 1992.

DATA AVAILABILITY ANNOUNCEMENTS

Railway Carloadings, December 1992	15
Apparent Per Capita Food Consumption in Canada, 1990 and 1991	15
1991 Annual Survey of Manufactures	
Tobacco Products Industry	15
Plate Work Industry	15
Clay Products Industry (from Domestic Clay)	15
Clay Products Industry (from Imported Clay)	16
Cement Industry	16
Primary Glass and Glass Containers Industry	16
Clock and Watch Industry	16

MAJOR RELEASE DATES: February 1993 17



Statistics
Canada

Statistique
Canada

Canada

MAJOR RELEASES

Real Gross Domestic Product at Factor Cost by Industry

November 1992
(Seasonally Adjusted Data)

Monthly Overview

Gross Domestic Product at Factor Cost edged down 0.1% in November following four consecutive monthly increases. Goods producers boosted output 0.2%, but this was outweighed by a 0.2% cutback in services, as finance, insurance and real estate dipped sharply in the post-referendum period. Excluding these industries, output increased 0.1% in November. In October and November together, economy-wide output averaged 0.3% above its third-quarter level.

Goods-producing Industries

Goods producers increased output 0.2% following a flat October. Manufacturers were responsible for most of the gain, but utilities and forestry also recorded higher production. A substantial decline in mining and smaller drops in agriculture and construction moderated the gain.

Manufacturers boosted output 0.6% in November and 3.5% in the first 11 months of 1992, the largest 11-month gain since July 1988. Although 13 of 21 major groups increased production in November, transportation equipment and primary metals accounted for most of the dollar gain. Declines in electronic equipment, printing and publishing, paper and allied products and food products partly offset the gains.

Production of transportation equipment jumped 3.8% following two consecutive monthly declines. Output of motor vehicles as well as motor vehicle parts accounted for most of the increase. Producers of motor vehicles boosted output 7.1% as sales improved in both Canada and the U.S. Output was also spurred by the resolution of a strike and by the re-opening of several plants following temporary plant closures for inventory control in October. Output of motor vehicle parts rose 3.0%.

Led by widespread gains, output of primary metals advanced 5.1%. Production of iron and steel jumped 9.5%, boosted both by shipments abroad and shipments to other Canadian manufacturers.

Following several monthly advances, output of electrical products fell 2.9%. Output of electronic equipment declined 3.7%, its second consecutive

decrease, while production of office machinery fell 5.0%. Exports of these products fell considerably in November.

Widespread losses led a 3.0% decline in printing and publishing following a 2.0% gain in October, the month of the referenda.

Output of paper and allied products fell 1.3% following three consecutive monthly increases. The decline was mostly attributable to lower production of newsprint and reflected lower shipments abroad. Despite the decline, the newsprint industry operated at almost full capacity and its production trend remained up.

After decreasing 2.3% in October, mining output fell a further 1.8% in November. Crude oil and natural gas extraction dropped the most in dollar terms, mainly due to lower output of crude. Output by gold mines decreased 8.3% as prices hit their lowest level in six years. Potash mines also contributed to the weakness. The losses were partly offset by a 5.8% gain in drilling activities.

Elsewhere in the goods sector, utilities rose 1.2% mainly due to higher production of electricity, while forestry increased 4.3%. Construction edged down 0.1%, led by a decline of 2.8% in construction of non-residential buildings.

Services-producing Industries

Services output slipped 0.2%, its largest decline since June 1991. Finance, insurance and real estate accounted for most of the loss. Communications and transportation and storage also contributed to the weakness, while wholesale and retail trade recorded moderate gains.

Finance, insurance, and real estate tumbled 1.1% as the prime rate surged to 9.75% in November following the October referenda. Lower activity by real estate agents, security brokers and mutual funds accounted for most of the weakness. Real estate transactions were curtailed by the sharp spike in interest rates, while a drop in new issues of bonds by provincial governments and corporations reduced activity by security brokers. Assets of mutual funds fell as investors shifted to other types of assets to take advantage of the higher interest rates. (By the third week of January, however, the prime rate fell to 6.75%, close to its level of last September.)

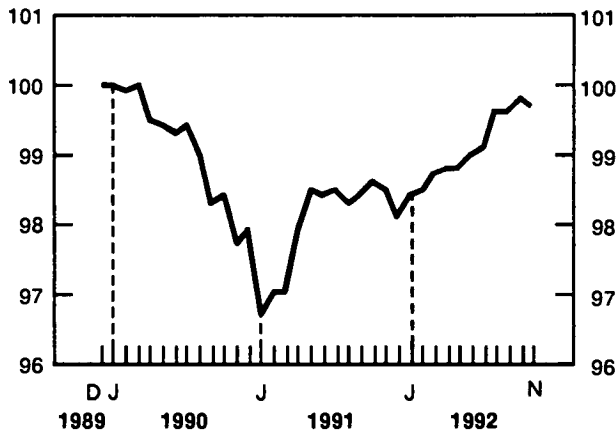
Communications declined 0.8% following an advance of 1.4% in October. The weakness was widespread but was dominated by the post office and telecommunications carriers.

Gross Domestic Product

Seasonally adjusted at 1986 prices

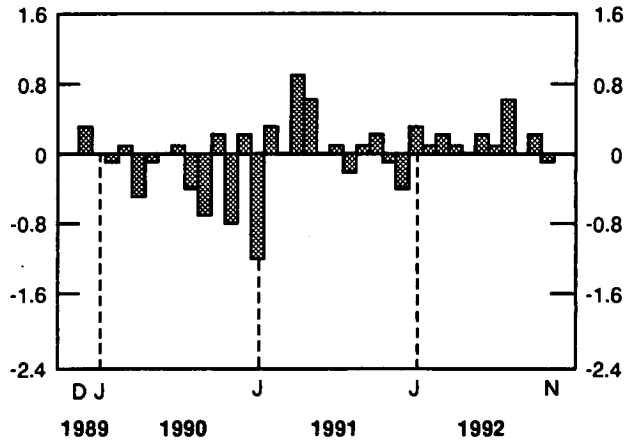
Total Economy

Index (December 1989 = 100)



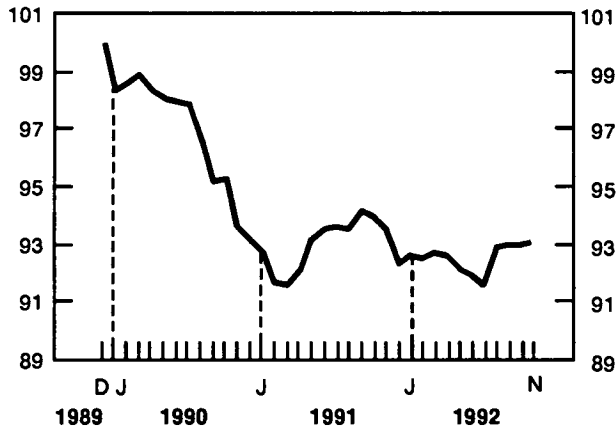
Total Economy

% change



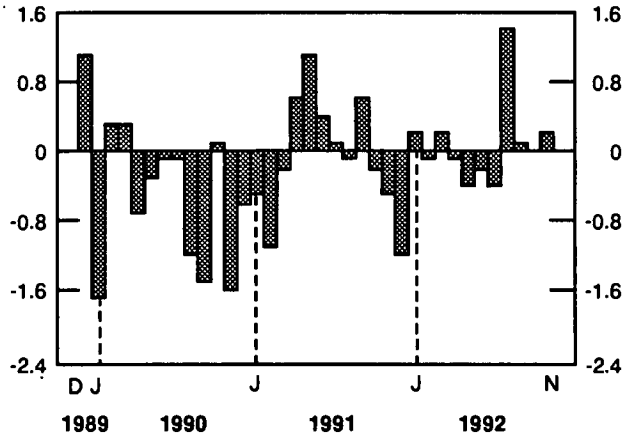
Goods

Index (December 1989 = 100)



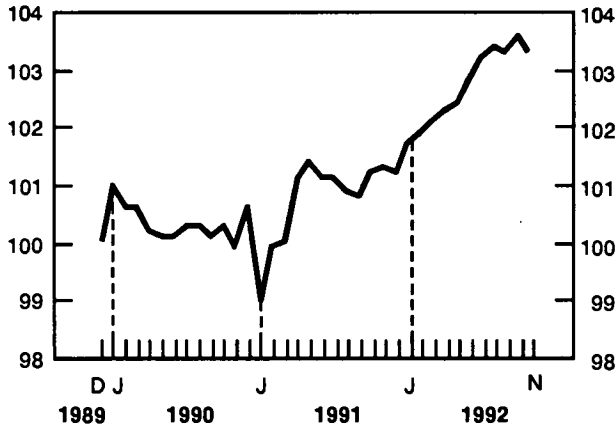
Goods

% change



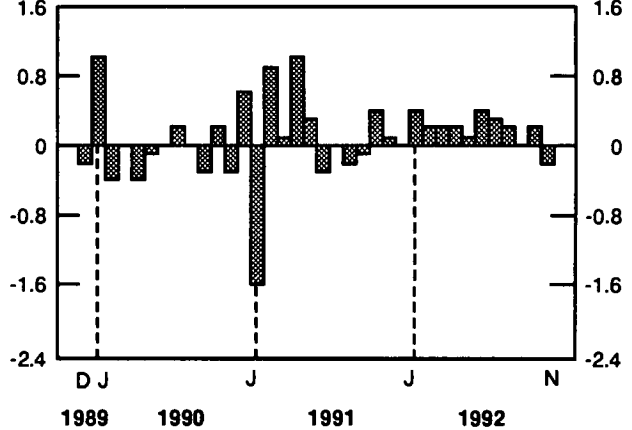
Services

Index (December 1989 = 100)



Services

% change



Transportation and storage fell 0.4%, its third consecutive monthly decline. In transportation, water and railway transport recorded the largest drops as they were most affected by lower exports of wheat. Air transport also contributed to the weakness. Higher throughput of natural gas led a 2.4% advance in pipelines. The cutbacks in wheat exports and lower deliveries by farmers to grain elevators led a 6.6% decline in storage services.

Wholesale trade advanced 0.2% even though only five of 11 trade groups recorded advances. Higher sales by wholesalers of apparel and dry goods, food and miscellaneous products were partly offset by declines posted by other wholesalers.

Retail trade edged up 0.2% following a 0.7% gain in October. Motor vehicle dealers and retailers of food increased their sales the most. Lower sales were recorded by retailers of alcoholic beverages, service stations and general merchandise stores.

Available on CANSIM: matrices 4671-4674.

The November 1992 issue of *Gross Domestic Product by Industry* (15-001, \$12.70/\$127) is scheduled for release in February.

For further information, contact Michel Girard (613-951-9145), Industry Measures and Analysis Division.

Real Gross Domestic Product at Factor Cost by Industry, at 1986 Prices by Month
(Seasonally Adjusted at Annual Rates)

	1991	1992			
	November	August	September	October	November
			(\$ millions)		
Total Economy	499,863.8	505,448.5	505,495.1	506,278.3	505,765.4
Business Sector:	407,906.3	413,126.8	413,063.1	413,666.3	412,927.9
Goods:	167,420.1	166,103.3	166,302.4	166,280.5	166,610.4
Agriculture	11,302.4	10,515.3	10,532.3	10,647.6	10,579.9
Fishing and Trapping	911.4	881.8	885.5	872.2	863.7
Logging Industry	2,516.8	2,605.8	2,533.2	2,551.3	2,661.4
Mining Industries	20,065.8	20,935.3	20,960.9	20,487.0	20,115.6
Manufacturing Industries	84,974.8	85,559.2	85,426.9	85,888.4	86,410.0
Construction Industries	31,579.9	29,494.6	29,596.9	29,425.4	29,381.8
Other Utility Industries	16,069.0	16,111.3	16,366.7	16,408.6	16,598.0
Services:	240,486.2	247,023.5	246,760.7	247,385.8	246,317.5
Transportation and Storage	21,454.2	22,149.4	21,996.2	21,786.2	21,700.3
Communication Industries	19,224.3	19,447.3	19,468.9	19,750.9	19,600.8
Wholesale Trade	28,391.7	29,787.7	29,972.8	30,060.6	30,130.3
Retail Trade	29,924.2	30,354.3	30,279.8	30,485.0	30,541.6
Finance, Insurance and Real Estate	81,670.0	84,551.9	84,327.3	84,648.9	83,711.1
Community, Business and Personal Services	59,821.8	60,732.9	60,715.7	60,654.2	60,633.4
Non-business Sector:	91,957.5	92,321.7	92,432.0	92,612.0	92,837.5
Goods:	942.6	988.9	939.7	928.9	919.3
Services:	91,014.9	91,332.8	91,492.3	91,683.1	91,918.2
Government Service Industry	33,982.0	34,026.7	34,152.6	34,264.2	34,356.6
Community and Personal Services	53,557.0	53,889.9	53,895.9	53,943.9	54,056.6
Other Services	3,475.9	3,416.2	3,443.8	3,475.0	3,505.0
Other Aggregations:					
Goods-producing Industries	168,362.7	167,092.2	167,242.1	167,209.4	167,529.7
Services-producing Industries	331,501.1	338,356.3	338,253.0	339,068.9	338,235.7
Industrial Production	122,052.2	123,594.7	123,694.2	123,712.9	124,042.9
Non-durable Manufacturing	39,599.0	39,413.9	39,409.2	40,031.5	39,764.0
Durable Manufacturing	45,375.8	46,145.3	46,017.7	45,856.9	46,646.0

Employment, Earnings and Hours

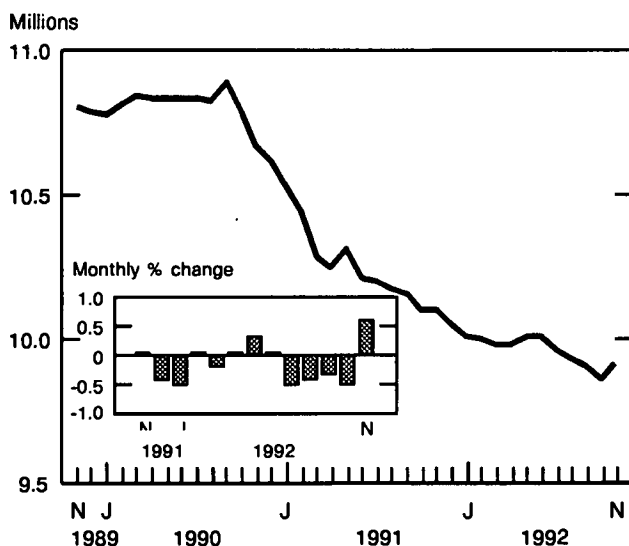
November 1992

Highlights

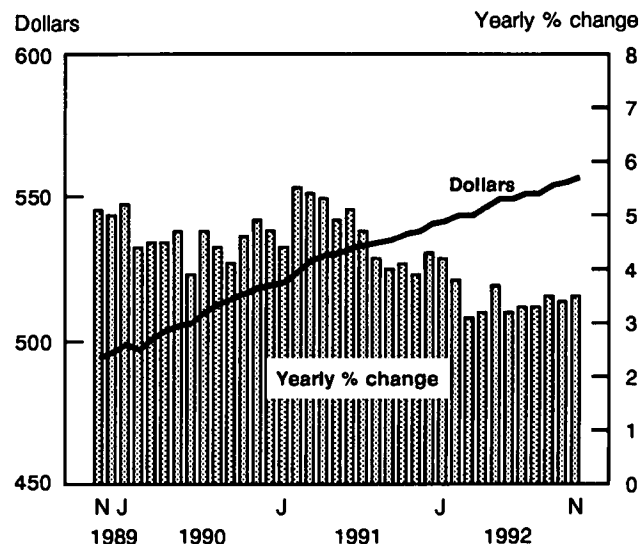
Seasonally Adjusted Data

- The preliminary estimate of payroll employment for November indicates a slight increase to 9,910,000 after five months of decline. Most industries showed some employment growth, led by retail trade, wholesale trade and durable goods manufacturing. Retail trade recorded the strongest month-to-month increase since May 1991.
- After declining for the first four months of 1992, business services have generally shown an improving trend since May. Seasonally adjusted employment in business services for November was 0.6% higher than the previous month and virtually unchanged from November 1991.
- Seasonally adjusted average weekly earnings¹ were \$556.51 in November, a gain of 3.4% compared to November 1991. The year-over-year growth in earnings continued to be lower than in previous years.

SEPH Employment, Seasonally Adjusted, Industrial Aggregate, Canada, November 1992



SEPH Average Weekly Earnings, Seasonally Adjusted, Industrial Aggregate, Canada, November 1992



- Compared to the previous month, the industrial aggregate² average weekly earnings rose by 0.3%. Forestry (1.8%), finance, insurance and real estate (0.9%), trade (0.5%), accommodation, food and beverage services (0.5%) and health and social services (0.4%) recorded earnings growth higher than the industrial aggregate.
- From April to November 1992, average weekly hours for hourly-paid employees remained flat at 30.5 hours. Average hourly earnings of hourly-paid employees stood at \$13.97 in November, an increase of \$0.35 since the beginning of 1992. The monthly growth in average weekly earnings resulted from an increase in average hourly earnings while average weekly hours were unchanged.

¹ Not adjusted for inflation.

² The industrial aggregate is the sum of all industries except agriculture, fishing and trapping, religious organizations, private households and military personnel.

Unadjusted Data

- Employment in durable goods manufacturing was down 1.5% from November 1991, the smallest year-over-year drop since the industry began its downturn in January 1990. Nearly half of durable goods industries showed increases in November, with the diffusion index reaching 0.49.
- Firms with 200 or more employees and firms with less than 200 employees both recorded identical year-over-year growth rates for employment of -1.6%. However, the increasing trend in employment levelled off for firms with less than 200 employees.
- The fixed-weighted average hourly earnings index was 130.7, an increase of 3.4% from November 1991. The index has continued to show lower increases than in previous years.

Available on CANSIM: matrices 4285-4466, 9438-9452 and 9639-9911.

Data are available from *Employment, Earnings and Hours* (72-002, \$28.50/\$285) and by special tabulation. See "How to Order Publications".

Note to Users

The Survey of Employment, Payrolls and Hours (SEPH), introduced in 1983, delivers current monthly employment, earnings and hours data by industry.

The diffusion index measures how widespread change is for a specific SEPH variable, showing the percentage of industries that recorded increases for that variable. For example, between September 1991 and September 1992, the industrial aggregate employment for Canada declined by approximately 246,000. Of the 214 three-digit SIC industries in SEPH (1980 SIC), 131 experienced employment declines, while 83 experienced increases. The diffusion index for September 1992 was therefore $83/214 = 0.39$.

Fixed-weighted average hourly earnings data have been constructed to address the impact of compositional shifts in the employment mix between industries, provinces/territories and salaried and hourly employees. The fixed-weighted earnings series provide a better indicator of the underlying trends in wage rates than the current average earnings series.

For further information on this release or on the program, products and services, contact Stephen Johnson (613-951-4090, fax: 613-951-4087), Labour Division.

Employment, Earnings and HoursSeasonally adjusted estimates and change over previous month, Canada
November 1992

Industry Group - Canada (1980 S.I.C.)	Number of employees					
	November 1992P	October 1992 ^r	September 1992	August 1992	July 1992	June 1992
	Thousands					
Industrial aggregate	9,910	9,852	9,898	9,925	9,960	10,006
	58	-46	-27	-35	-46	-1
Goods-producing Industries	2,306	2,293	2,306	2,314	2,326	2,338
	12	-13	-8	-12	-12	-12
Logging and forestry	56	54	55	55	57	56
	2	-1	-1	-1	1	0
Mining, quarrying and oil wells	126	126	124	126	128	130
	1	1	-2	-2	-2	-1
Manufacturing	1,573	1,568	1,573	1,571	1,580	1,574
	5	-5	2	-9	6	-22
Construction	417	414	415	424	422	428
	4	-1	-9	3	-6	2
Service-producing Industries	7,597	7,573	7,594	7,620	7,642	7,672
	24	-20	-26	-22	-29	14
Transportation, communication and other utilities	805	804	815	826	825	827
	1	-11	-11	1	-2	
Wholesale trade	581	567	574	573	585	587
	14	-7	1	-12	-2	7
Retail trade	1,296	1,275	1,273	1,277	1,277	1,289
	21	2	-4	0	-13	-2
Finance, insurance and real estate	648	647	652	658	659	669
	1	-5	-6	-2	-9	4
Business services	494	491	497	493	492	494
	3	-6	4	1	-2	5
Education related services	921	920	910	904	893	897
	1	10	6	12	-4	-8
Health and social services	1,124	1,120	1,125	1,136	1,144	1,143
	3	-5	-10	-8	1	5
Accommodation, food and beverage services	661	659	663	688	678	672
	2	-4	-25	10	6	-2
Miscellaneous services	495	499	501	512	517	515
	-4	-3	-11	-5	1	-5
Public administration	719	720	718	709	712	717
	0	2	8	-3	-5	7
Industrial aggregate - Provinces						
Newfoundland	137	137	137	135	136	138
	1	0	2	-1	-2	0
Prince Edward Island	39	39	39	39	38	38
	0	0	0	1	0	-1
Nova Scotia	279	279	278	276	280	282
	0	0	2	-3	-3	-1
New Brunswick	222	221	226	226	225	225
	0	-5	0	1	0	-1
Quebec	2,385	2,394	2,395	2,400	2,404	2,426
	-9	0	-6	-4	-22	-10
Ontario	3,982	3,930	3,954	3,987	4,022	4,037
	52	-24	-33	-36	-14	29
Manitoba	373	374	375	374	374	373
	-1	-2	2	0	0	-1
Saskatchewan	294	294	296	295	297	299
	0	-3	2	-3	-1	-1
Alberta	969	961	966	965	966	972
	8	-5	1	-1	-6	-1
British Columbia	1,209	1,203	1,195	1,189	1,192	1,190
	6	8	6	-3	2	-9
Yukon	12	12	12	12	11	11
	0	0	0	0	0	0
Northwest Territories	20	20	20	20	20	20
	0	0	0	0	-1	0

P Preliminary estimates.

^r Revised estimates.

Employment, Earnings and Hours

Seasonally adjusted estimates and change over previous month, Canada
November 1992

Industry Group - Canada (1980 S.I.C.)	Average weekly earnings *					
	November 1992 ^P	October 1992 ^r	September 1992	August 1992	July 1992	June 1992
	Dollars					
Industrial aggregate	556.51	554.92	553.80	551.34	550.99	548.84
	1.59	1.12	2.46	0.35	2.15	-0.46
Goods-producing Industries	689.71	687.61	686.25	685.57	683.64	681.95
	2.10	1.36	0.68	1.93	1.69	-4.61
Logging and forestry	724.06	711.02	711.08	706.97	702.01	705.75
	13.04	-0.06	4.11	4.96	-3.74	-6.46
Mining, quarrying and oil wells	945.45	946.99	947.22	932.74	924.47	929.48
	-1.54	-0.23	14.48	8.27	-5.01	-7.94
Manufacturing	662.41	660.40	659.35	659.66	658.23	655.36
	2.01	1.05	-0.31	1.43	2.87	-0.74
Construction	636.59	636.98	637.06	640.08	638.27	636.03
	-0.39	-0.08	-3.02	1.81	2.24	-18.99
Service-producing Industries	516.17	514.86	513.54	510.54	510.51	508.38
	1.31	1.32	3.00	0.03	2.13	1.92
Transportation, communication and other utilities	715.05	713.55	713.70	706.99	703.87	701.94
	1.50	-0.15	6.71	3.12	1.93	-2.43
Wholesale trade	594.09	591.51	589.29	583.77	581.64	577.40
	2.58	2.22	5.52	2.13	4.24	-4.19
Retail trade	325.29	324.55	319.30	318.82	320.60	319.91
	0.74	5.25	0.48	-1.78	0.69	3.43
Finance, insurance and real estate	612.01	606.81	599.17	588.64	592.47	590.99
	5.20	7.64	10.53	-3.83	1.48	1.45
Business services	588.70	587.61	585.75	587.75	586.63	591.53
	1.09	1.86	-2.00	1.12	-4.90	1.40
Education related services	670.10	669.87	669.68	679.36	683.56	678.96
	0.23	0.19	-9.68	-4.20	4.60	5.86
Health and social services	495.36	493.40	495.19	488.93	486.05	481.11
	1.96	-1.79	6.26	2.88	4.94	1.66
Accommodation, food and beverage services	217.15	215.97	215.13	212.74	211.84	211.60
	1.18	0.84	2.39	0.90	0.24	1.14
Miscellaneous services	373.64	375.01	369.76	359.43	357.21	357.50
	-1.37	5.25	10.33	2.22	-0.29	0.49
Public administration	727.89	726.69	731.85	731.83	734.22	724.21
	1.20	-5.16	0.02	-2.39	10.01	-1.18
Industrial aggregate - Provinces						
Newfoundland	513.11	516.04	520.00	514.95	509.11	507.69
	-2.93	-3.96	5.05	5.84	1.42	0.41
Prince Edward Island	450.15	447.33	447.77	446.32	446.11	446.44
	2.82	-0.44	1.45	0.21	-0.33	1.50
Nova Scotia	491.88	493.31	494.93	500.75	495.65	491.73
	-1.43	-1.62	-5.82	5.10	3.92	1.10
New Brunswick	507.17	502.90	495.84	490.10	493.37	490.27
	4.27	7.06	5.74	-3.27	3.10	-3.21
Quebec	545.22	546.31	544.70	540.64	539.46	538.47
	-1.09	1.61	4.06	1.18	0.99	2.10
Ontario	585.12	584.31	583.07	580.87	578.76	577.49
	0.81	1.24	2.20	2.11	1.27	-2.06
Manitoba	493.45	491.34	486.94	487.79	489.17	488.26
	2.11	4.40	-0.85	-1.38	0.91	1.63
Saskatchewan	469.36	469.34	469.83	472.09	473.07	473.66
	0.02	-0.49	-2.26	-0.98	-0.59	0.65
Alberta	552.49	549.86	550.90	548.26	546.53	543.26
	2.63	-1.04	2.64	1.73	3.27	2.71
British Columbia	552.44	552.04	549.62	545.82	549.12	546.64
	0.40	2.42	3.80	-3.30	2.28	-0.51
Yukon	688.68	706.86	682.94	660.26	673.91	682.90
	-18.18	23.92	22.68	-13.65	-8.99	5.38
Northwest Territories	709.40	721.14	721.38	712.45	711.23	706.39
	-11.74	-0.24	8.93	1.22	4.84	-0.65

^P Preliminary estimates.

^r Revised estimates.

* For all employees.

Employment, Earnings and Hours

November 1992

Industry Group - Canada (1980 S.I.C.)	Number of employees * (Unadjusted)					
	November 1992 ^p	October 1992 ^r	November 1991	October 1991	November 1992/1991	October 1992/1991
	Thousands				Year-over-year % change	
Industrial aggregate	10,033	10,036	10,196	10,273	-1.6	-2.3
Goods-producing industries	2,311	2,370	2,384	2,481	-3.1	-4.5
Logging and forestry	57	61	55	63	3.6	-3.2
Mining, quarrying and oil wells	124	126	135	141	-8.1	-10.6
Manufacturing	1,570	1,586	1,622	1,651	-3.2	-3.9
Construction	425	463	436	489	-2.5	-5.3
Service-producing industries	7,722	7,666	7,812	7,792	-1.2	-1.6
Transportation communication and other utilities	813	818	829	831	-1.9	-1.6
Wholesale trade	584	573	574	578	1.7	-0.9
Retail trade	1,330	1,294	1,383	1,350	-3.8	-4.1
Finance, insurance and real estate	655	652	679	680	-3.5	-4.1
Business services	496	500	497	511	-0.2	-2.2
Education related service	994	973	982	962	1.2	1.1
Health and social service	1,129	1,119	1,116	1,109	1.2	0.9
Accommodation, food and beverage services	661	660	674	678	-1.9	-2.7
Miscellaneous services	491	504	512	524	-4.1	-3.8
Public administration	705	709	702	703	0.4	0.9
Industrial aggregate - Provinces						
Newfoundland	138	140	143	145	-3.5	-3.4
Prince Edward Island	39	40	38	39	2.6	2.6
Novembera Scotia	281	285	285	288	-1.4	-1.0
New Brunswick	222	228	231	238	-3.9	-4.2
Quebec	2,397	2,430	2,493	2,503	-3.9	-2.9
Ontario	4,032	3,984	4,087	4,118	-1.3	-3.3
Manitoba	379	382	377	379	0.5	0.8
Saskatchewan	299	302	302	304	-1.0	-0.7
Alberta	978	975	977	989	0.1	-1.4
British Columbia	1,237	1,239	1,233	1,238	0.3	0.1
Yukon	12	12	11	11	9.1	9.1
Northwest Territories	20	20	20	21	0.0	-4.8

^p Preliminary estimates.^r Revised estimates.

* For all employees, including overtime.

Employment, Earnings and Hours

November 1992

Industry Group - Canada (1980 S.I.C.)	Average weekly earnings* (Unadjusted)					
	November 1992 ^p	October 1992 ^r	November 1991	October 1991	November 1992/1991	October 1992/1991
	Dollars				Year-over-year % change	
Industrial aggregate	554.92	556.42	536.83	538.53	3.4	3.3
Goods-producing Industries	693.90	693.03	674.55	672.51	2.9	3.1
Logging and forestry	727.70	711.71	687.18	681.57	5.9	4.4
Mining, quarrying and oil wells	953.45	952.54	933.68	921.99	2.1	3.3
Manufacturing	666.27	664.05	643.02	641.09	3.6	3.6
Construction	640.75	651.05	636.11	644.94	0.7	0.9
Service-producing Industries	513.32	514.19	494.80	495.86	3.7	3.7
Transportation, communication and other utilities	714.79	715.94	695.43	698.08	2.8	2.6
Wholesale trade	594.64	590.61	570.74	565.98	4.2	4.4
Retail trade	323.36	324.92	316.95	316.96	2.0	2.5
Finance, insurance and real estate	606.81	603.10	563.62	564.45	7.7	6.8
Business services	588.70	587.61	573.84	570.74	2.6	3.0
Education related service	644.87	651.78	631.29	635.82	2.2	2.5
Health and social service	492.25	491.66	477.16	478.23	3.2	2.8
Accommodation, food and beverage services	216.85	219.16	207.21	210.39	4.7	4.2
Miscellaneous services	375.22	376.39	366.33	363.82	2.4	3.5
Public administration	734.66	729.26	711.54	708.31	3.2	3.0
Industrial aggregate - Provinces						
Newfoundland	511.29	516.54	500.59	504.88	2.1	2.3
Prince Edward Island	451.00	449.83	427.20	435.49	5.6	3.3
Nova Scotia	491.88	493.31	484.72	480.80	1.5	2.6
New Brunswick	507.17	502.90	484.99	485.00	4.6	3.7
Quebec	545.22	546.31	521.87	525.05	4.5	4.0
Ontario	583.45	585.66	563.18	563.98	3.6	3.8
Manitoba	489.94	492.80	480.33	485.41	2.0	1.5
Saskatchewan	468.49	471.67	469.53	471.47	-0.2	0.0
Alberta	549.39	551.29	535.63	539.38	2.6	2.2
British Columbia	553.16	554.78	539.71	539.68	2.5	2.8
Yukon	688.68	706.86	655.08	665.20	5.1	6.3
Northwest Territories	709.40	721.14	721.76	734.32	-1.7	-1.8

^p Preliminary estimates.

^r Revised estimates.

^{*} For all employees, including overtime.

Building Permits

(Seasonally Adjusted Data)
November 1992

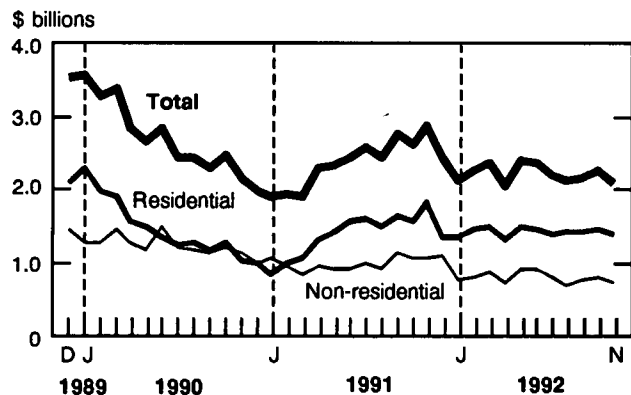
Summary

The preliminary value of building permits issued in Canada declined 7.9% to \$2,086 million in November, down from \$2,266 million (revised) in October. The non-residential (-9.9%) and residential (-6.9%) sectors were both responsible for this decrease. Quebec (-14.3%) and Ontario (-12.8%) reported significant decreases in the total value of building permits issued in November.

- Ontario (-19.4%) and Quebec (-10.8%) reported drops in the value of residential building permits during November. The Prairies showed the largest increase (+6.6%), followed by the British Columbia (+2.4%) and Atlantic (+2.4%) regions. (The British Columbia region includes the Yukon and the Northwest Territories.)
- The preliminary total number of dwelling units authorized in November decreased to 158,000 units at an annual rate, down 5.5% from 167,000 units in October. The number of units was down for both single dwellings (-6.7% to 95,000 units) and multiple dwellings (-3.6% to 63,000 units).

Value of Building Permits Issued in Canada

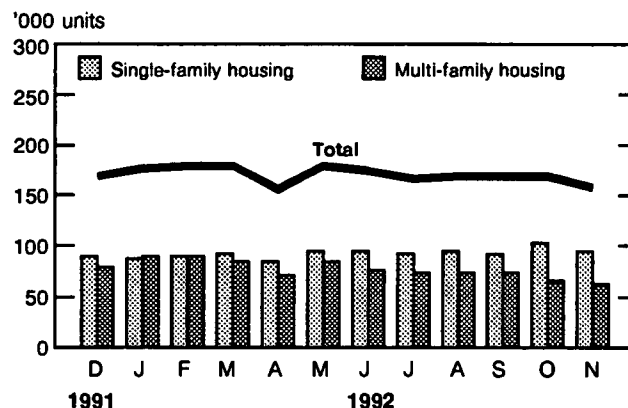
Seasonally adjusted



Note: Revised data for October, preliminary data for November.

Dwelling Units Authorized in Canada

Seasonally adjusted at annual rates



Note: Revised data for October, preliminary data for November.

Residential Sector

- The preliminary value of residential building permits was down 6.9% to \$1,369 million in November from October's revised \$1,470 million.
- The value of building permits decreased in both the single-family (-7.1% to \$1,011 million) and multi-family (-6.1% to \$357 million) dwelling sectors in November.

Advance Estimate of the Residential Sector for December 1992

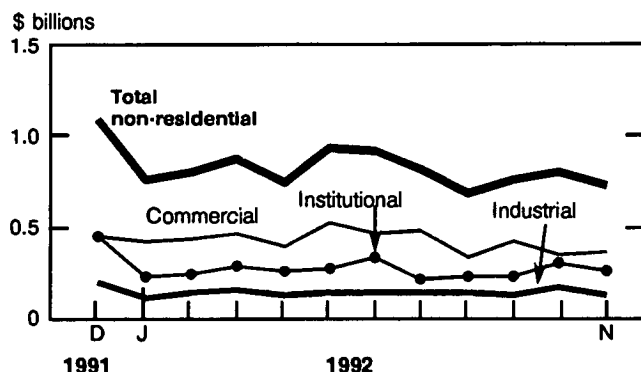
- The advance estimate for December indicated that the value of residential building permits issued in Canada increased to \$1,549 million, up 12.4% from the revised value for November (\$1,379 million).
- The advance estimate of dwelling units authorized in December increased 10.3% to 175,000 units at annual rates, up from the revised 159,000 units reported in November.

Non-residential Sector

- The preliminary value of non-residential building permits decreased 9.9% to \$717 million in November, down from \$796 million in October.
- The value of non-residential building permits decreased in the Prairie (-30.1%) and Atlantic (-14.7%) regions and in Quebec (-20.2%). Only the British Columbia region reported an increase (+3.6%) in November.

Value of Non-residential Permits Issued in Canada

Seasonally adjusted



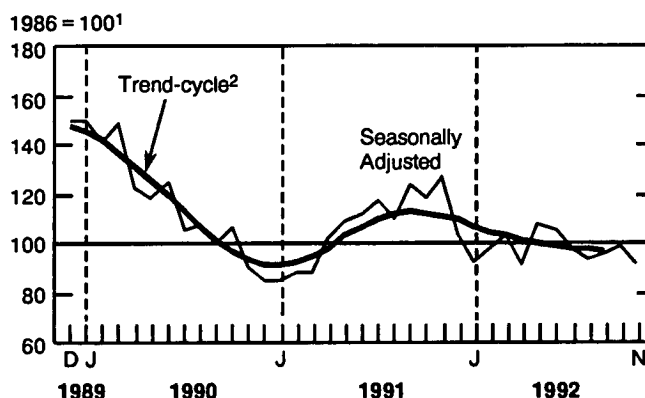
Note: Revised data for October, preliminary data for November.

- The value of building permits for industrial projects decreased 27.8% to \$120 million in November. The Prairies (-50.6%), the British Columbia region (-30.8%) and Ontario (-29.8%) contributed most to this decrease. The value of building permits for institutional projects also decreased (-13.6%) in November, as a result of declines in Québec (-45.9%), the Prairies (-28.0%) and the British Columbia region (-17.8%). On the other hand, the value of building permits for commercial projects edged up 2.1% to \$348 million.

Building Permits Indices

- The building permits index short-term trend (excluding engineering projects) followed its downward trend in September, declining at a constant rate of 0.9% since June 1992.
- The short-term trend index went down 1.9% in the non-residential sector to 77.6 and edged down 0.4% in the residential sector to 109.0 in September.

Building Permits Indices



¹ This series is deflated by using the construction input price index, which includes cost of material and labor.

² The trend-cycle shows the seasonally adjusted value of building permits without irregular influences, which can obscure the short-term trend. In order to reduce the number of false signals in the construction activity series, the trend-cycle is published with a two-month lag.

Available on CANSIM: matrices 80 (levels 3-7, 16-22), 129, 137, 443, 989-992, 994, 995 and 4073.

The November 1992 issue of *Building Permits* (64-001, \$22.10/\$221) is scheduled for release shortly. See "How to Order Publications".

For further information on statistics, contact Monique Lavigne (613-951-2583). For analytical information, contact Michel Labonté (613-951-9690), Current Investment Indicators Section, Investment and Capital Stock Division. □

Value of Residential and Non-residential Building Permits

November 1992

Regions and Type of Construction	Seasonally adjusted				Unadjusted			
	Nov. 1992 ^p	Oct. 1992 ^r	Nov./ Oct. 1992	Nov. 1992/ 1991	Nov. 1992 ^p	Oct. 1992 ^r	Nov./ Oct. 1992	Nov. 1992/ 1991
	\$ thousands		% change		\$ thousands		% change	
Canada								
Total Construction	2,086,000	2,265,614	-7.9	-27.6	1,919,453	2,559,830	-25.0	-25.1
Residential	1,368,932	1,470,079	-6.9	-24.3	1,203,072	1,575,558	-23.6	-21.4
Non-residential	717,068	795,535	-9.9	-33.1	716,381	984,272	-27.2	-30.7
Industrial	120,338	166,718	-27.8	-27.8	108,222	215,457	-49.8	-23.2
Commercial	347,705	340,579	2.1	-35.5	342,972	411,787	-16.7	-35.8
Institutional	249,025	288,238	-13.6	-31.9	265,187	357,028	-25.7	-26.2
Atlantic								
Total Construction	117,074	121,354	-3.5	1.7	99,335	145,524	-31.7	3.1
Residential	81,338	79,435	2.4	20.8	61,421	84,225	-27.1	24.6
Non-residential	35,736	41,919	-14.7	-25.2	37,914	61,299	-38.1	-19.5
Industrial	4,769	4,077	17.0	-32.3	3,355	4,256	-21.2	-14.7
Commercial	16,809	24,859	-32.4	-45.2	18,728	30,873	-39.3	-43.9
Institutional	14,158	12,983	9.1	40.3	15,831	26,170	-39.5	62.0
Quebec								
Total Construction	354,274	413,200	-14.3	-47.6	353,185	486,689	-27.4	-45.2
Residential	232,545	260,646	-10.8	-32.3	217,043	277,812	-21.9	-27.8
Non-residential	121,729	152,554	-20.2	-63.4	136,142	208,877	-34.8	-60.4
Industrial	28,963	30,508	-5.1	-31.8	32,965	37,896	-13.0	-25.0
Commercial	63,118	67,269	-6.2	-57.2	69,851	103,386	-32.4	-54.6
Institutional	29,648	54,777	-45.9	-79.3	33,326	67,595	-50.7	-77.2
Ontario								
Total Construction	695,341	797,841	-12.8	-48.3	700,742	925,293	-24.3	-42.9
Residential	409,924	508,642	-19.4	-56.4	407,286	567,964	-28.3	-51.4
Non-residential	285,417	289,199	-1.3	-29.6	293,456	357,329	-17.9	-24.6
Industrial	62,487	89,017	-29.8	-22.9	51,910	130,982	-60.4	-18.6
Commercial	103,204	90,390	14.2	-40.8	112,551	100,950	11.5	-40.1
Institutional	119,726	109,792	9.0	-20.2	128,995	125,397	2.9	-6.3
Prarities								
Total Construction	332,757	362,243	-8.1	9.2	265,314	369,728	-28.2	11.1
Residential	231,268	217,006	6.6	50.4	174,254	214,345	-18.7	61.0
Non-residential	101,489	145,237	-30.1	-32.7	91,060	155,383	-41.4	-30.3
Industrial	14,286	28,903	-50.6	-46.9	10,528	28,005	-62.4	-43.7
Commercial	48,190	62,174	-22.5	-47.8	48,048	66,894	-28.2	-42.5
Institutional	39,013	54,160	-28.0	23.1	32,484	60,484	-46.3	14.2
British Columbia¹								
Total Construction	586,554	570,976	2.7	34.2	500,877	632,596	-20.8	40.5
Residential	413,857	404,350	2.4	36.8	343,068	431,212	-20.4	47.1
Non-residential	172,697	166,626	3.6	28.3	157,809	201,384	-21.6	28.1
Industrial	9,833	14,213	-30.8	5.5	9,464	14,318	-33.9	-10.0
Commercial	116,384	95,887	21.4	23.4	93,794	109,684	-14.5	24.1
Institutional	46,480	56,526	-17.8	50.2	54,551	77,382	-29.5	47.1

¹ Building permits issued for the Yukon and the Northwest Territories are included in the British Columbia region.^p Preliminary figure.^r Revised figure.

Sales of Refined Petroleum Products

December 1992

Highlights

Seasonally Adjusted Sales

- Preliminary estimates indicate that sales of refined petroleum products totalled 6.7 million cubic metres in December 1992, a slight 0.1% increase from November 1992.
- "All other refined products" (includes propane, butane, petrochemical feedstocks, etc.) and motor gasoline registered sales increases in December of 4.5% and 0.3%, respectively. These were largely offset by decreased sales of light fuel oil (-4.8%), heavy fuel oil (-2.3%) and diesel fuel oil (-1.5%).

Unadjusted Sales

- Total sales of refined petroleum products increased 3.4% from December 1991, to 6.9

million cubic metres. All four main products registered increases: motor gasoline (4.7%), heavy fuel oil (1.9%), diesel fuel oil (1.6%) and light fuel oil (0.6%).

- Cumulative sales of refined petroleum products for 1992 amounted to 80.1 million cubic metres, up 1.5% over the corresponding period in 1991. Within this total, heavy fuel oil sales increased 2.6%, light fuel oil 2.2%, motor gasoline 1.5% and diesel fuel oil 0.1%.

Available on CANSIM: matrices 628-642 and 644-647.

The December 1992 issue of *Refined Petroleum Products* (45-004, \$18.20/\$182) will be available the third week of March. See "How to Order Publications".

For more detailed information on this release, contact Gerry O'Connor (613-951-3562), Energy Section, Industry Division.

Sales of Refined Petroleum Products

	September 1992 ^r	October 1992 ^r	November 1992 ^r	December 1992 ^p	Dec./ Nov. 1992
Adjusted for Seasonal Variation					
	thousands of cubic metres				%
Total, All Products	6 534.3	6 717.4	6 643.5	6 650.5	0.1
Motor Gasoline	2 818.0	2 791.2	2 813.9	2 823.6	0.3
Diesel Fuel Oil	1 309.0	1 320.5	1 324.8	1 304.5	-1.5
Light Fuel Oil	475.4	522.5	507.7	483.3	-4.8
Heavy Fuel Oil	552.7	654.3	706.7	690.5	-2.3
All Other Refined Products	1 379.2	1 428.9	1 290.4	1 348.6	4.5
Total					
	December 1991	December 1992 ^p	January- December 1991	January- December 1992 ^p	Cumulative 1992/1991
Unadjusted for Seasonal Variation					
	thousands of cubic metres				%
Total, All Products	6 703.7	6 933.1	78 899.7	80 051.1	1.5
Motor Gasoline	2 729.8	2 857.0	32 823.7	33 312.2	1.5
Diesel Fuel Oil	1 228.7	1 248.3	15 860.5	15 883.4	0.1
Light Fuel Oil	794.9	799.5	5 742.4	5 868.5	2.2
Heavy Fuel Oil	835.1	850.7	7 995.5	8 200.6	2.6
All Other Refined Products	1 115.2	1 177.6	16 477.6	16 786.4	1.9

^p Preliminary.

^r Revised.

DATA AVAILABILITY ANNOUNCEMENTS

Railway Carloadings

December 1992

Revenue freight loaded by railways in Canada totalled 16.8 million tonnes in December 1992, a decrease of 10.3% from December 1991. The carriers received an additional 1.0 million tonnes from United States connections in December.

Total loadings for the January to December 1992 period decreased 6.1% from the 1991 period. Receipts from United States connections showed an increase of 4.3%.

All 1991 figures and 1992 cumulative data have been revised.

Available on CANSIM: matrix 1431.

The December 1992 issue of *Railway Carloadings* (52-001, \$8.30/\$83) will be released the fourth week of February.

For seasonally adjusted revenue-freight loadings, contact Angus MacLean (613-951-2484), Transportation Division. ■

Apparent Per Capita Food Consumption in Canada

1990 and 1991

Estimates of apparent per capita food consumption in Canada for 1990 and 1991 are now available for oils and fats, fruits, vegetables, potatoes and mushrooms.

Available on CANSIM: tables 00190104-00190108.

Apparent Per Capita Food Consumption in Canada - Part 11, 1991 (32-230, \$27) will be available in February. See "How to Order Publications".

For further information, contact John Brunette (613-951-0374), Agriculture Division. ■

Tobacco Products Industry

1991 Annual Survey of Manufactures

In 1991, the value of shipments of goods of own manufacture for the tobacco products industry (SIC 1221) totalled \$1,632.0 million, up 4.5% from \$1,561.3 million in 1990.

Available on CANSIM: matrix 5408.

The data for this industry will be released in *Manufacturing Industries of Canada: National and Provincial Areas* (31-203, \$68).

For more detailed information on this release, contact Peter Zylstra (613-951-3511), Industry Division. ■

Plate Work Industry

1991 Annual Survey of Manufactures

In 1991, the value of shipments of goods of own manufacture for the plate work industry (SIC 3022) totalled \$174.5 million, down 18.8% from \$214.9 million in 1990.

Available on CANSIM: matrix 5518.

The data for this industry will be released in *Manufacturing Industries of Canada: National and Provincial Areas* (31-203, \$68).

For more detailed information on this release, contact Bruno Pépin (613-951-9837), Industry Division. ■

Clay Products Industry (from Domestic Clay)

1991 Annual Survey of Manufactures

In 1991, the value of shipments of goods of own manufacture for the clay products industry (from domestic clay) (SIC 3511) totalled \$106.7 million, down 15.9% from \$126.9 million in 1990.

Available on CANSIM: matrix 6849.

The data for this industry will be released in *Manufacturing Industries of Canada: National and Provincial Areas* (31-203, \$68).

For more detailed information on this release, contact S. Pépin (613-951-3514), Industry Division. ■

Clay Products Industry (from Imported Clay)

1991 Annual Survey of Manufactures

In 1991, the value of shipments of goods of own manufacture for the clay products industry (from imported clay) (SIC 3512) totalled \$105.5 million, down 11.1% from \$118.7 million in 1990.

Available on CANSIM: matrix 6850.

The data for this industry will be released in *Manufacturing Industries of Canada: National and Provincial Areas* (31-203, \$68).

For more detailed information on this release, contact S. Pépin (613-951-3514), Industry Division. ■

Cement Industry

1991 Annual Survey of Manufactures

In 1991, the value of shipments of goods of own manufacture for the cement industry (SIC 3521) totalled \$746.3 million, down 21.7% from \$952.8 million in 1990.

Available on CANSIM: matrix 6851.

The data for this industry will be released in *Manufacturing Industries of Canada: National and Provincial Areas* (31-203, \$68).

For more detailed information on this release, contact S. Pépin (613-951-3520), Industry Division. ■

Primary Glass and Glass Containers Industry

1991 Annual Survey of Manufactures

In 1991, the value of shipments of goods of own manufacture for the primary glass and containers industry (SIC 3561) totalled \$498.3 million, down 11.3% from \$561.8 million in 1990.

Available on CANSIM: matrix 6856.

The data for this industry will be released in *Manufacturing Industries of Canada: National and Provincial Areas* (31-203, \$68).

For more detailed information on this release, contact S. Pépin (613-951-3520), Industry Division. ■

Clock and Watch Industry

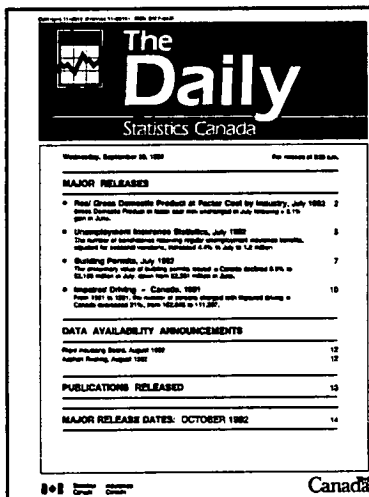
1991 Annual Survey of Manufactures

In 1991, the value of shipments of goods of own manufacture for the clock and watch industry (SIC 3913) totalled \$34.0 million, up 3.6% from \$32.8 million in 1990.

Available on CANSIM: matrix 6886.

The data for this industry will be released in *Manufacturing Industries of Canada: National and Provincial Areas* (31-203, \$68).

For more detailed information on this release, contact S. Pépin (613-951-3514), Industry Division. ■



Statistics Canada's Official Release Bulletin for Statistical Information

Catalogue 11-001E. Price: Canada: \$120.00 annually; United States: US\$144.00 annually; Other Countries: US\$168.00 annually

Published by the Communications Division
Statistics Canada, 10-N, R.H. Coats Bldg., Ottawa K1A 0T6.

Senior Editor: Greg Thomson (613-951-1187)
Editor: Tim Prichard (613-951-1103)

Published by authority of the Minister responsible for Statistics Canada. © Minister of Industry, Science and Technology, 1993. All rights reserved. No part of this publication may be reproduced, stored in a retrieval system or transmitted in any form or by any means, electronic, mechanical, photocopying, recording or otherwise without prior written permission from Licence Services, Marketing Division, Statistics Canada, Ottawa, Ontario, Canada K1A 0T6.

MAJOR RELEASE DATES: FEBRUARY 1993

(Release dates are subject to change)

Anticipated date(s) of release	Title	Reference period
February		
2	Short-term Expectations Survey	
3	Business Conditions Survey, Canadian Manufacturing Industries	January 1993
3	Help-wanted Index	January 1993
5	Labour Force Survey	January 1993
8	Farm Product Price Index	December 1992
9	New Motor Vehicle Sales	December 1992
9	Estimates of Labour Income	November 1992
10	Department Store Sales by Province and Metropolitan Area	December 1992
11	Canadian Composite Leading Indicator	November 1992, December 1992 and January 1993
11	New Housing Price Index	December 1992
12	Travel Between Canada and Other Countries	December 1992
16	Monthly Survey of Manufacturing	December 1992
17	Department Store Sales - Advance Release	January 1993
18	Preliminary Statement of Canadian International Trade	December 1992
18	Sales of Natural Gas	December 1992
19	Consumer Price Index	January 1993
22	Retail Trade	December 1992
22	Department Store Sales and Stocks	December 1992
22	Farm Cash Receipts	January-December 1992
23	Census of Population: Ethnic Origin and Dwellings	1991
24	Unemployment Insurance Statistics	December 1992
24	Wholesale Trade	December 1992
25	Canada's International Transactions in Securities	December 1992
25	Quarterly Financial Statistics for Enterprises	Fourth Quarter 1992
25	Industrial Product Price Index	January 1993
25	Raw Materials Price Index	January 1993
26	Private and Public Investment in Canada	Intentions 1993
26	Employment, Earnings and Hours	December 1992
26	International Travel Account	Fourth Quarter 1992
26	Sales of Refined Petroleum Products	January 1993
26	Major Release Dates	March 1993

The March 1993 release schedule will be published on February 26, 1993. **Users note:** This schedule can be retrieved from **CANSIM** by the command **DATES**. Contact Greg Thomson (613-951-1187), Communications Division.



1010133338

Canada's only monthly source of detailed wage information!

Do your professional responsibilities lie in business, labour or government? Then you must come to grips with how changes in the price of labour can impact on your organization. **Employment, Earnings and Hours** is the journal to help you evaluate the implications of wage and salary fluctuations.

Employment, Earnings and Hours is based on data from 42,000 Canadian firms. It's the largest monthly business survey in the country. And it's the *only source* of weekly and hourly earnings data in Canada. Each issue reports on the number of payroll employees by industry, average standard work weeks, over-time payments and much more! And the data covers over 280 major industry groups!

Each month, **Employment, Earnings and Hours** includes a succinct "Highlights" section reporting on major monthly developments. And every quarter, a feature article analyses a significant labour topic that will increase your knowledge of Canada's labour market.

Use **Employment, Earnings and Hours** to:

- safeguard your company from industry-specific cost increases or losses due to inflation when signing multi-year contracts;
- strengthen your position for negotiating wage increases and salary adjustments;
- make your contract bids more competitive;
- pinpoint future wage and salary expenditures.

Employment, Earnings and Hours will help you track wage changes, analyse the employment situation by industry, measure the economic performance of your firm against the average for firms in similar industries and develop escalation clauses in

long-term contracts.

Subscribe to **Employment, Earnings and Hours** (Catalogue no. 72-002) for \$285 (plus \$19.95 GST) in Canada, US\$342 in the United States and US\$399 in other countries. If you aren't completely satisfied with your subscription – for any reason – you may cancel and receive a full refund on all undelivered issues!

To order, write **Publication Sales, Statistics Canada, Ottawa, Ontario, K1A 0T6**, or contact the nearest Statistics Canada Regional Reference Centre listed in this publication. For faster ordering, call toll-free **1-800-267-6677** or fax your order to **1-613-951-1584**. Please do not send confirmation copy of a fax or telephone order.

