



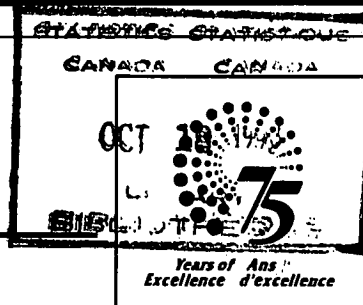
# The Daily

Statistics Canada

Monday, October 18, 1993

For release at 8:30 a.m.

NOT FOR LOAN  
NE S'EMPRUNTE PAS



## MAJOR RELEASES

- Monthly Survey of Manufacturing, August 1993** 3  
 The value of shipments increased 3.7% in August, counterbalancing decreases in recent months. August's increase was largely due to the motor vehicle, parts and accessories industry and the wood industry.
- Building Permits, August 1993** 6  
 The seasonally adjusted value of building permits issued in August fell 3.3% from July, to \$2,174 million. The non-residential sector's 9.6% decline, due to the poor performance in industrial (-27.4%) and commercial (-12.1%) construction, accounted for most of the overall decrease.
- Cancer Statistics, 1993** 9  
 In 1993, an estimated 116,200 new cases of cancer will be diagnosed in Canada and an estimated 59,700 deaths will be caused by cancer.

(continued on page 2)

### Cancer Statistics

1993

Today, the seventh edition of *Canadian Cancer Statistics* is released by Statistics Canada and the Canadian Cancer Society. This report presents cancer incidence and mortality estimates for 1993, historical (actual and estimated) data from 1969 to 1993, and selected indicators on cancer.

Breast cancer among women is the special topic of this year's report. In 1993, breast cancer is expected to account for 30% of all new cases and 20% of all cancer deaths among Canadian women. Although breast cancer incidence rates are on the rise, increases have occurred only among women age 50 and over. Also presented are comparisons of rates among the provinces and with the United States and other countries, as well as a summary of breast cancer screening activities.

*Canadian Cancer Statistics, 1993* is available from the Canadian Centre for Health Information and the Canadian Cancer Society. For copies of the report, please call 613-951-1746.



Statistics  
Canada

Statistique  
Canada

Canada

---

## DATA AVAILABILITY ANNOUNCEMENTS

---

Department Store Sales, September 1993	11
Profile of Enumeration Areas, Part B (Electronic Product), 1991 Census	11
Shipments of Rolled Steel, August 1993	11
Telephone Statistics, August 1993	11
Railway Operating Statistics, July 1993	11
Fur Farm Production, 1992	12

---

## PUBLICATION RELEASED

---

13

---

## REGIONAL REFERENCE CENTRES

---

14

---

---

## MAJOR RELEASES

---

### Monthly Survey of Manufacturing

August 1993

The seasonally adjusted value of shipments increased 3.7% in August, counterbalancing decreases in April, May and July. Motor vehicle, parts and accessories and the wood industries accounted for most of August's increase.

Strong sales of some models in the United States contributed to the sharp gain in the auto sector, as did increased production schedules and price increases on new 1994 models.

Much of the increase in the wood industries resulted from resumption of full operations after extended shutdowns, increased prices and the end of the British Columbian rail strike.

Manufacturing excluding motor vehicles, parts and accessories increased 1.1% after two consecutive declines.

Unfilled orders declined 0.5% in August, the fourth decrease in five months. Inventory levels increased for the sixth consecutive month.

The shipments trend was flat in the most recent period following marginal declines in the two previous periods. These were the first declines in 18 months. The trend for the rest of manufacturing has slowed, from a 0.7% increase in February 1993 to no growth in the two most recent periods.

The trend for unfilled orders has increased over the 10 most recent periods, but at a slower rate since February. The inventories trend increased in the four most recent periods following three years of declines. The new orders trend declined in the four most recent periods following one year of growth. (The short-term trend smooths irregular month-to-month movements not sustained over a longer period.)

#### Shipments

Preliminary estimates indicate that manufacturers' shipments increased 3.7% to \$25.8 billion in August. Motor vehicle, parts and accessories (+17.5%) and the wood industries (+7.8%) accounted for most of this increase; the rest of manufacturing was relatively flat. Fifteen of the 22 major groups (accounting for 83% of shipment values) increased, one was unchanged but six decreased.

The trend for shipments was flat in the most recent period after two consecutive declines. The

trend for 12 of the 22 major groups (accounting for 66% of shipment values) increased, although at a slower pace for nine groups.

#### Inventories (owned)

Inventories (owned) rose 0.8% in August to \$35.2 billion, the sixth increase in a row. The largest increases were in the electrical and electronic products (+5.9%), wood (+1.6%) and chemical (+1.2%) industries. The paper and allied products (-0.8%) and refined petroleum and coal (-1.4%) industries posted the largest declines. The trend for inventories (owned) has risen over the four most recent periods, following three years of declines.

#### Inventories/shipments Ratio

The inventories/shipments ratio declined to 1.37 in August, from 1.41 in July. The trend increased in August, the first increase in two and a half years.

#### Unfilled Orders

Unfilled orders decreased 0.5% to \$24.4 billion, the fourth decline in the last five months. A large decline in transportation equipment (-3.1%) was mostly offset by increases in the other major groups, notably machinery (+4.3%). The trend increased over the 10 most recent periods, but at a slower pace since February 1993.

Unfilled orders are a stock of orders that will contribute to future shipments, assuming that orders are not cancelled.

New orders are the sum of shipments for the current month (i.e., orders received and shipped within the same month) plus the change in unfilled orders.

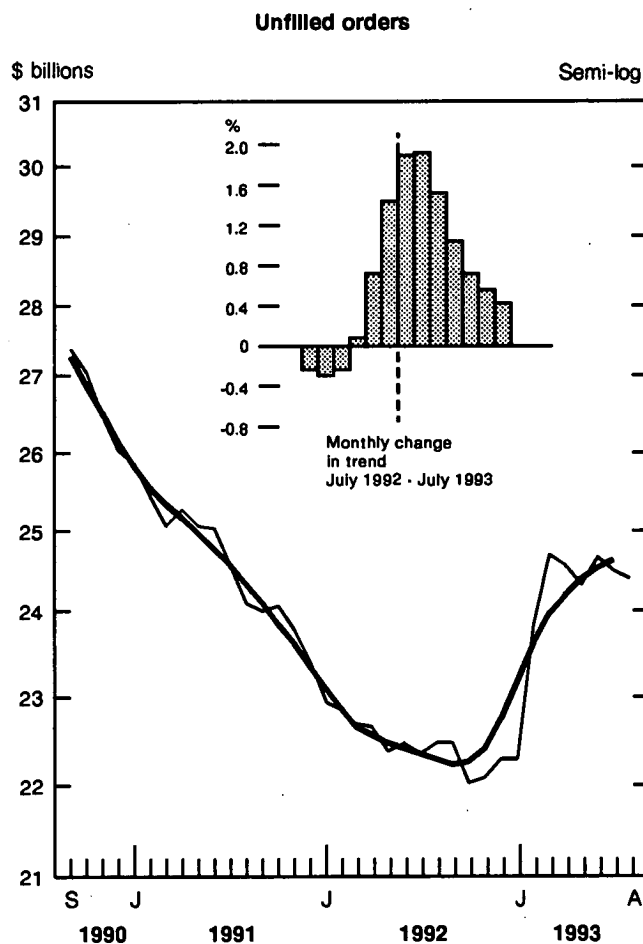
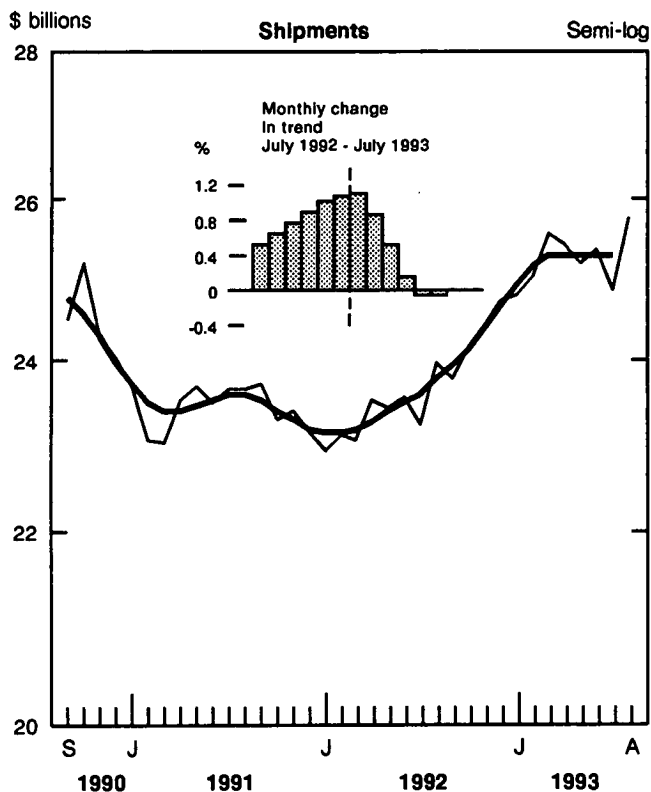
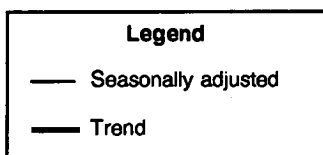
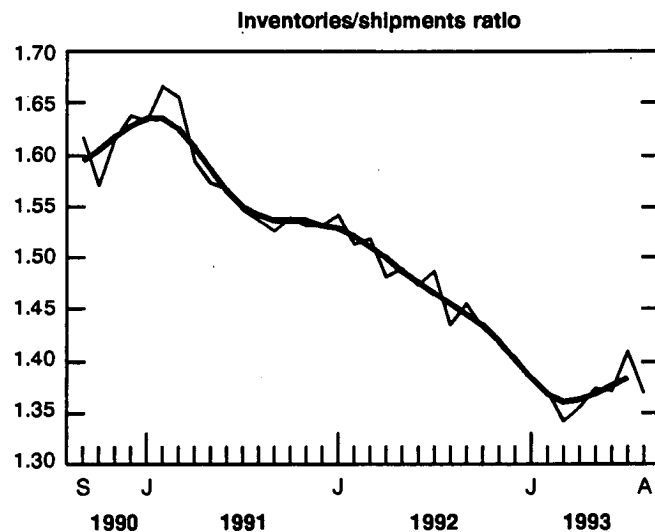
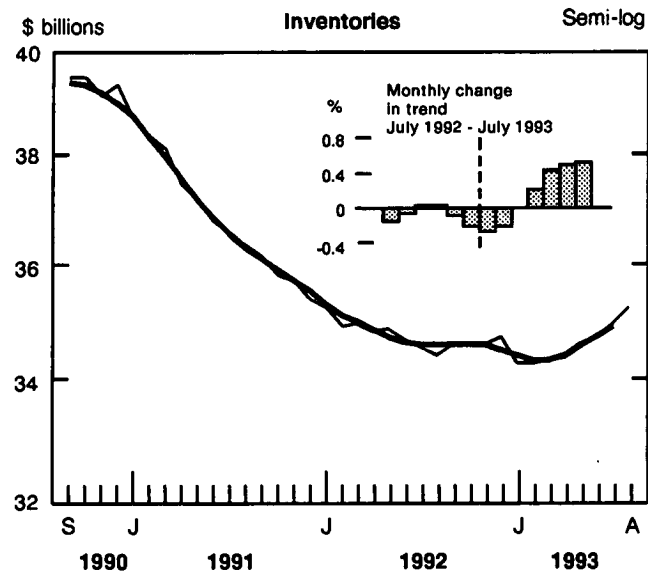
#### New Orders

New orders increased 3.7% to \$25.6 billion. The trend for new orders has declined over the four most recent periods.

#### Year-to-date

Manufacturers' shipments for the first eight months of 1993 were estimated at \$201.8 billion, 8.2% higher than in 1992.

# Manufacturers' Inventories, Shipments and Unfilled Orders



**Available on CANSIM: matrices 9550-9580.**

For more information, please consult the August 1993 issue of *Monthly Survey of Manufacturing* (31-001, \$17.30/\$173), available shortly.

Data for shipments by province in greater detail may be available on request. For further information, please contact Bob Traversy, Information and Classification Section (613-951-9497) or the Monthly Survey of Manufacturing Section (613-951-9832), Industry Division.

**Shipments, Inventories and Orders in all Manufacturing Industries**

	unadjusted				seasonally adjusted			
	Shipments	Inven- tories	Unfilled orders	New orders	Shipments	Inven- tories	Unfilled orders	New orders
	\$ millions							
August 1992	23,489	34,150	22,649	23,765	23,960	34,361	22,514	24,093
September 1992	25,020	34,160	22,427	24,798	23,769	34,569	22,495	23,750
October 1992	25,677	34,125	21,917	25,167	24,146	34,545	22,053	23,704
November 1992	24,557	34,262	21,856	24,496	24,387	34,575	22,101	24,434
December 1992	23,088	33,986	21,912	23,144	24,711	34,656	22,309	24,919
January 1993	21,677	34,451	22,249	22,014	24,747	34,212	22,323	24,761
February 1993	23,254	34,854	23,875	24,880	25,003	34,211	23,864	26,544
March 1993	27,361	34,985	24,893	28,378	25,567	34,263	24,723	26,426
April 1993	25,807	34,771	24,823	25,738	25,412	34,322	24,595	25,284
May 1993	26,218	34,617	24,447	25,841	25,188	34,496	24,354	24,946
June 1993	27,441	34,423	24,708	27,702	25,334	34,667	24,669	25,649
July 1993	22,387	34,539	24,621	22,300	24,833	34,914	24,542	24,706
August 1993	25,809	35,026	24,444	25,632	25,759	35,188	24,410	25,627

	Shipments		Inventories		Inventories/ shipments		Unfilled orders		New orders	
	S.A.	Trend	S.A.	Trend	S.A.	Trend	S.A.	Trend	S.A.	Trend
	seasonally adjusted									
	month-to-month % change				ratio		month-to-month % change			
August 1992	3.2	0.6	-0.4	0.0	1.43	1.46	0.6	-0.3	4.4	0.6
September 1992	-0.8	0.8	0.6	0.0	1.45	1.44	-0.1	-0.2	-1.4	0.8
October 1992	1.6	0.9	-0.1	0.0	1.43	1.43	-2.0	0.1	-0.2	1.2
November 1992	1.0	1.0	0.1	-0.1	1.42	1.42	0.2	0.7	3.1	1.6
December 1992	1.3	1.1	0.2	-0.2	1.40	1.40	0.9	1.4	2.0	1.7
January 1993	0.1	1.1	-1.3	-0.3	1.38	1.38	0.1	1.9	-0.6	1.5
February 1993	1.0	0.9	0.0	-0.2	1.37	1.37	6.9	1.9	7.2	0.9
March 1993	2.3	0.5	0.2	0.0	1.34	1.36	3.6	1.5	-0.4	0.2
April 1993	-0.6	0.1	0.2	0.2	1.35	1.36	-0.5	1.0	-4.3	-0.3
May 1993	-0.9	-0.1	0.5	0.4	1.37	1.37	-1.0	0.7	-1.3	-0.3
June 1993	0.6	-0.1	0.5	0.5	1.37	1.37	1.3	0.6	2.8	-0.2
July 1993	-2.0	0.0	0.7	0.5	1.41	1.38	-0.5	0.4	-3.7	-0.1
August 1993	3.7	*	0.8	*	1.37	*	-0.5	*	3.7	*

\* The short-term trend represents a weighted average of the data.

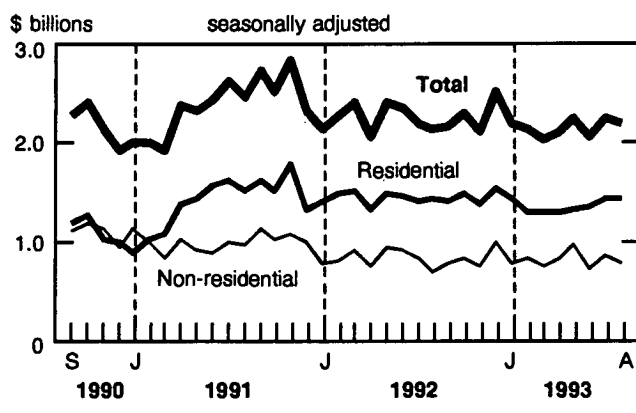
## Building Permits

August 1993 (Preliminary)

The seasonally adjusted value of building permits issued in August fell 3.3% from July, to \$2,174 billion. The non-residential sector's 9.6% decline, due to the poor performance in industrial (-27.4%) and commercial (-12.1%) construction, accounted for most of the overall decrease.

The largest decreases were in Quebec (-15.9%) and in the Atlantic (-10.9%) region; the Prairies showed the biggest increase (+5.6%).

### Value of Building Permits Issued



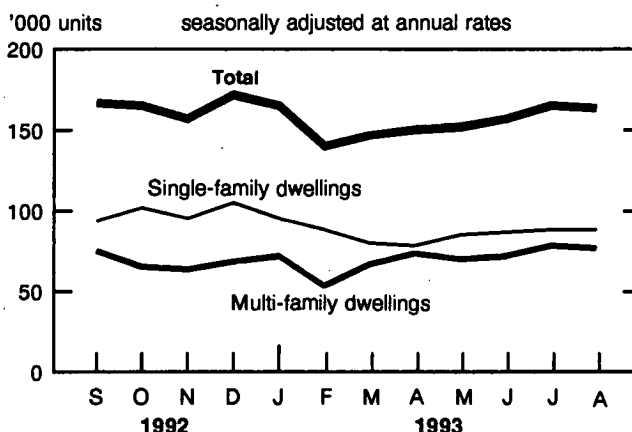
### Residential Sector

The value of residential building permits in August edged up by 0.5% to \$1,413 million, from \$1,405 million in July. Increases occurred in August in all regions except British Columbia (-8.9%), where the multi-family dwelling sector fell sharply (-14.6%) from July's exceptional performance.

The multi-family dwelling sector rose 4.6% to \$464 million due in large part to the Prairies (+37.9%) and Ontario (+22.3%). On the other hand, the single-family dwelling sector recorded a drop in the value of building permits (-1.3% to \$948 million).

For January to August 1993, the seasonally adjusted value of residential building permits declined 6.1% from 1992. Ontario recorded the largest decrease (-18.6%); British Columbia posted the biggest increase (+9.0%).

## Dwelling Units Authorized

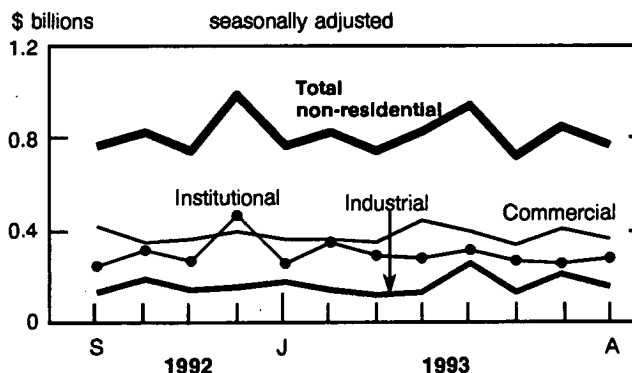


The seasonally adjusted total number of dwelling units authorized dropped 0.7% in August to 164,000 units at an annual rate, compared to 165,000 units in July. The decrease was largely attributable to the multi-family sector (-2.1% to 76,000 units). The slight dip in multi-family construction activity stemmed from British Columbia (-20.1%).

### Non-residential Sector

The value of non-residential permits in August dropped 9.6% to \$762 million, down from \$843 million in July. The decline was shared by all regions except British Columbia (+34.1%), where the commercial (+57.6%) and institutional (+43.6%) sectors performed excellently.

### Value of Non-residential Permits Issued



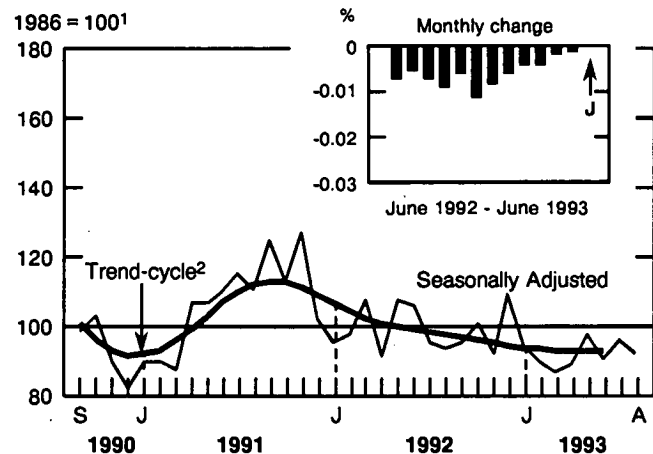
The industrial sector (-27.4%) contributed most to the overall decline in the non-residential sector. Industrial construction's downturn came mostly from Quebec (-72.9%), British Columbia (-48.7%) and the Atlantic (-32.5%) region.

For January to August 1993, the seasonally adjusted value of non-residential building permits dropped 1.6% from last year.

### Building Permits Indexes

In August, the building permits index (excluding engineering projects), which depicts the real level of intentions, dropped 3.8% to 92.0.

### Building Permits Indexes



<sup>1</sup> This series is deflated by using the construction input price index, which includes cost of material and labor.

<sup>2</sup> The trend-cycle shows the seasonally adjusted value of building permits without irregular influences that can obscure the short-term trend. In order to reduce the number of false signals in the construction activity series, the trend-cycle is published with a two-month lag.

The short-term trend index for building permits was unchanged in June at 92.2. Since October 1992, the gap in the month-over-month declines have narrowed continuously.

The short-term trend index for the residential sector was unchanged in June 1993 (100.9). The non-residential sector on the other hand, edged down 0.1% to 80.2.

Available on CANSIM: matrices 80 (levels 3-7, 16-22), 129, 137, 443, 989-992, 994, 995 and 4073.

The August 1993 issue of *Building Permits* (64-001, \$22.10/\$221) is scheduled for release on October 25. The Residential Building Permits Advance Estimate for September will be released on November 1.

For further information on statistics, contact Johanne Bureau (613-951-9689). For analytical information, contact Nathalie Léveillé (613-951-2025), Current Investment Indicators Section, Investment and Capital Stock Division. □

## Value of Residential and Non-residential Building Permits

Regions and type of Construction	July 1993 <sup>r</sup>	August 1993 <sup>p</sup>	August 1992 to August 1993	July to August 1993	July 1993 <sup>r</sup>	August 1993 <sup>p</sup>	August 1992 to August 1993	July to August 1993
	seasonally adjusted				unadjusted			
	\$ thousands		% change		\$ thousands		% change	
<b>Canada</b>								
<b>Total Construction</b>	<b>2,247,890</b>	<b>2,174,377</b>	<b>2.8</b>	<b>-3.3</b>	<b>2,418,796</b>	<b>2,301,969</b>	<b>6.9</b>	<b>-4.8</b>
Residential	1,405,017	1,412,531	-0.8	0.5	1,545,619	1,515,381	6.4	-2.0
Non-residential	842,873	761,846	10.1	-9.6	873,177	786,588	7.7	-9.9
Industrial	197,545	143,493	3.5	-27.4	182,990	159,970	7.5	-12.6
Commercial	402,060	353,604	9.8	-12.1	413,482	336,736	1.4	-18.6
Institutional	243,268	264,749	14.6	8.8	276,705	289,882	16.2	4.8
<b>Atlantic</b>								
<b>Total Construction</b>	<b>130,352</b>	<b>116,124</b>	<b>-11.7</b>	<b>-10.9</b>	<b>173,625</b>	<b>145,001</b>	<b>-4.4</b>	<b>-16.5</b>
Residential	78,541	81,596	2.6	3.9	107,580	108,831	10.7	1.2
Non-residential	51,811	34,528	-33.6	-33.4	66,045	36,170	-32.3	-45.2
Industrial	6,635	4,481	-22.0	-32.5	9,352	4,114	-10.6	-56.0
Commercial	28,489	22,196	-21.0	-22.1	39,816	25,210	-20.8	-36.7
Institutional	16,687	7,851	-56.8	-53.0	16,877	6,846	-59.6	-59.4
<b>Quebec</b>								
<b>Total Construction</b>	<b>505,510</b>	<b>425,059</b>	<b>-0.6</b>	<b>-15.9</b>	<b>421,947</b>	<b>413,398</b>	<b>-1.4</b>	<b>-2.0</b>
Residential	265,190	269,182	1.8	1.5	208,892	252,002	3.5	20.6
Non-residential	240,320	155,877	-4.3	-35.1	213,055	161,396	-8.2	-24.2
Industrial	72,710	19,678	-62.7	-72.9	55,420	23,605	-59.5	-57.4
Commercial	99,156	75,820	16.2	-23.5	88,956	65,676	2.6	-26.2
Institutional	68,454	60,379	34.4	-11.8	68,679	72,115	34.6	5.0
<b>Ontario</b>								
<b>Total Construction</b>	<b>751,378</b>	<b>747,915</b>	<b>4.6</b>	<b>-0.5</b>	<b>844,990</b>	<b>833,835</b>	<b>9.8</b>	<b>-1.3</b>
Residential	451,950	469,998	-3.2	4.0	531,398	539,363	4.9	1.5
Non-residential	299,428	277,917	21.2	-7.2	313,592	294,472	20.1	-6.1
Industrial	76,719	83,314	52.9	8.6	68,195	101,692	73.6	49.1
Commercial	135,388	92,625	12.5	-31.6	133,654	76,675	-14.3	-42.6
Institutional	87,321	101,978	10.3	16.8	111,743	116,105	19.5	3.9
<b>Prairies</b>								
<b>Total Construction</b>	<b>303,677</b>	<b>320,553</b>	<b>12.5</b>	<b>5.6</b>	<b>329,508</b>	<b>343,211</b>	<b>18.9</b>	<b>4.2</b>
Residential	185,949	206,107	5.0	10.8	204,320	225,866	17.9	10.5
Non-residential	117,728	114,446	29.1	-2.8	125,188	117,345	20.8	-6.3
Industrial	17,628	23,777	87.8	34.9	16,309	19,119	38.2	17.2
Commercial	73,000	58,909	22.9	-19.3	81,209	62,445	20.1	-23.1
Institutional	27,100	31,760	13.2	17.2	27,670	35,781	14.2	29.3
<b>British Columbia<sup>1</sup></b>								
<b>Total Construction</b>	<b>556,973</b>	<b>564,726</b>	<b>1.5</b>	<b>1.4</b>	<b>648,726</b>	<b>566,524</b>	<b>5.9</b>	<b>-12.7</b>
Residential	423,387	385,648	-3.0	-8.9	493,429	389,319	3.4	-21.1
Non-residential	133,586	179,078	12.7	34.1	155,297	177,205	11.8	14.1
Industrial	23,853	12,243	-6.0	-48.7	33,714	11,440	-15.8	-66.1
Commercial	66,027	104,054	5.7	57.6	69,847	106,730	12.8	52.8
Institutional	43,706	62,781	32.4	43.6	51,736	59,035	17.2	14.1

<sup>1</sup> Building permits issued for the Yukon and the Northwest Territories are included in the British Columbia region.<sup>p</sup> Preliminary figures.<sup>r</sup> Revised figures.



## Cancer Statistics

### 1993 Estimates

In 1993, an estimated 116,200 new cases of cancer will be diagnosed in Canada and an estimated 59,700 deaths will be caused by cancer. Over the past 10 years, the number of new cases has increased by about 3,000 per year and the number of deaths by about 1,700. (In 1983, 86,700 new cases and 42,900 cancer deaths were reported for all of Canada.)

Of the estimated new cases in 1993, 52% will be diagnosed in men and 48% in women. Similarly, more cancer deaths will occur among men (55%) than among women (45%).

Over 80% of both new cases and cancer deaths will occur among Canadians aged 55 and older. Less than 2% of new cases and less than 1% of deaths will occur prior to age 25.

### Breast Cancer Most Common Type for Women

Again in 1993, breast cancer will be the most common cancer among women. Breast cancer is expected to account for 16,300 (or 30%) of all new

#### Note to Users

These 1993 estimates were produced by modelling actual historical cancer incidence and mortality data by site and province.

The incidence estimates for 1993 exclude approximately 50,200 cases of non-melanoma skin cancer.

cancer cases and 5,400 (or 20%) of all cancer deaths among Canadian women, just ahead of the 5,300 lung cancer deaths among women.

### Age Is a Major Factor

Breast cancer incidence rates begin to rise after age 30. The majority of cases (an estimated 67% in 1993) will occur after age 55, although 14% are expected to be diagnosed in women aged 25 to 44.

Since 1981, breast cancer incidence rates have generally increased. However, this increase has been restricted to women aged 50 and over. Incidence rates for women under 50 have not changed over the past two decades, but breast cancer mortality rates have dropped in this age group.

### Estimated New Cases and Deaths for Major Cancer Sites

Site	1993 Estimates					
	New Cases			Deaths		
	Total	Male	Female	Total	Male	Female
<b>All Cancers</b>	<b>116,200</b>	<b>60,900</b>	<b>55,300</b>	<b>59,700</b>	<b>32,800</b>	<b>26,900</b>
Lung	19,100	12,500	6,600	16,300	11,000	5,300
Female Breast	16,300	...	16,300	5,400	...	5,400
Colorectal	16,000	8,500	7,500	6,300	3,300	3,000
Prostate	12,900	12,900	...	3,800	3,800	...
Lymphoma	6,600	3,600	3,000	3,200	1,700	1,500
Bladder	4,900	3,700	1,200	1,310	910	400
Kidney	3,550	2,100	1,450	1,360	820	540
Leukemia	3,150	1,750	1,400	2,060	1,150	910
Oral	3,120	2,200	920	1,100	790	310
Stomach	3,000	1,900	1,100	2,140	1,350	790
Melanoma	2,950	1,500	1,450	560	350	210
Body of Uterus	2,900	...	2,900	630	...	630
Pancreas	2,750	1,350	1,400	2,900	1,450	1,450
Ovary	2,100	...	2,100	1,350	...	1,350
Brain	2,030	1,150	880	1,480	840	640
Larynx	1,370	1,100	270	565	470	95
Cervix	1,300	...	1,300	400	...	400
All other sites	12,080	6,650	5,430	8,845	4,870	3,975

... Not applicable.

Note: Figures exclude non-melanoma skin cancer (ICD-9 173).

Source: Canadian Centre for Health Information, Statistics Canada.

## Canada Ranks High

Breast cancer incidence rates for Canada are among the highest in the world, exceeded only by those in the United States. Breast cancer is very much a disease of Western countries, with very low rates being reported for most Asian and African populations. Incidence rates vary within Canada, with the highest rates in British Columbia and Manitoba and the lowest rates in the Territories and Newfoundland.

## Good Prognosis

Survival rates for breast cancer are higher than for most other cancers. The relative five-year survival rate for breast cancer is 74%, based on cases diagnosed between 1980 and 1984. By contrast, the relative five-year survival rate for lung cancer in women is 16%, based on cases diagnosed during the same period.

## Prostate Cancer Overtakes Lung Cancer For Men

For the first time, prostate cancer is expected to overtake lung cancer as the most frequently diagnosed cancer for men—12,900 new cases compared with 12,400 new cases of lung cancer for men. Lung cancer, however, remains the leading cause of death from cancer; it constitutes over one-third of cancer deaths among men in Canada.

## Trends Differ by Type of Cancer

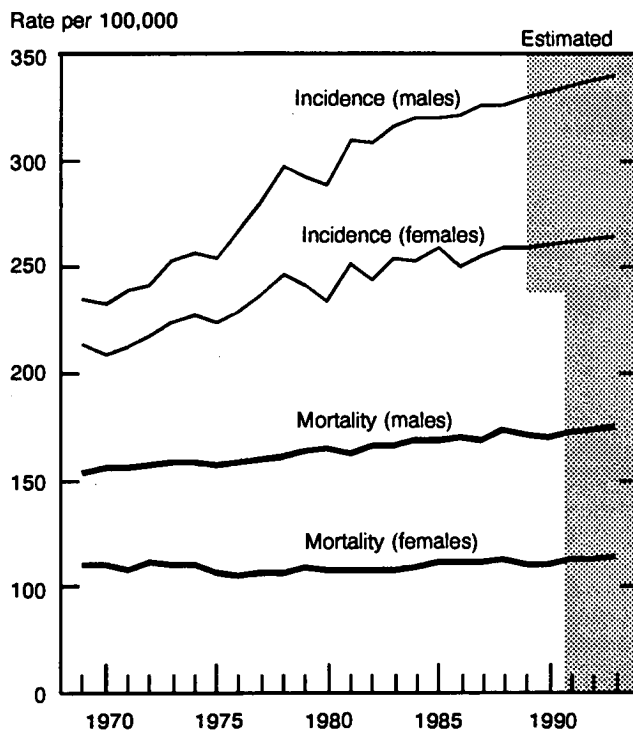
Cancer incidence and mortality trends can vary by type of cancer. During the 1980s, incidence and mortality rates showed steady increases for the following cancers: lung cancer in females; prostate cancer and melanoma in males; and kidney cancer in both sexes.

However, death rates for cancer in children have fallen 50% during the last 20 years, mainly because of improved treatment for leukemia and lymphoma.

Other types of cancer have also shown downward trends. For example, the incidence and mortality rates have been falling steadily for the following cancers: cancers of the cervix, uterine body and ovary in females; Hodgkin's Disease in males; and stomach cancer in both sexes. The accompanying chart presents trends in cancer incidence and mortality for all cancers for both sexes.

*Canadian Cancer Statistics, 1993* is a collaborative effort between Statistics Canada, Health

## Age-standardized incidence and mortality rates for all cancers



**Note:** Rates are adjusted to the age distribution of the World Standard Population; all figures exclude non-melanoma skin cancer (ICD-9 173).

**Source:** Canadian Centre for Health Information, Statistics Canada.

Canada, provincial/territorial cancer registries, the National Cancer Institute of Canada and the Canadian Cancer Society.

Copies are available free of charge from the Canadian Cancer Society (Suite 200, 10 Alcorn Avenue, Toronto, Ontario, M4B 3B1, 416-961-7223), the Canadian Centre for Health Information (613-951-1746), local divisions of the Canadian Cancer Society, or Statistics Canada's Regional Reference Centres.

For more information, please contact Leslie Gaudette (613-951-1740) or Judy Lee (613-951-1775), Health Status Section, Canadian Centre for Health Information. ■

---

## DATA AVAILABILITY ANNOUNCEMENTS

---

### Department Store Sales Advance Release

September 1993

Department stores sales including concessions for September 1993 totalled \$1,044 million, down 0.2% from September 1992. The major department stores' sales dropped 3.4% to \$574 million, but sales for the junior category rose 4.1% to \$470 million.

Note that this advance release is a very preliminary indicator of the Monthly Department Store Sales by Province and Metropolitan Area Survey.

For further information on this release, contact Diane Lake (613-951-9824), Retail Trade Section, Industry Division. ■

### Profile of Enumeration Areas, Part B (Electronic Product)

1991 Census

A profile of enumeration areas for all the provinces and territories is now available on diskette and magnetic tape. The profile is based on 20% sample data collected in the 1991 Census of Canada.

The profile shows population counts for such characteristics as: home language; knowledge of languages; religion; ethnic origin; place of birth; period of immigration; mobility status; fertility; highest level of schooling; labour force activity; occupation; and industry. Also profiled are dwelling counts (by need for repair and period of construction), average housing costs for households and income distributions (for individuals, households and families).

To order *Profile of Enumeration Areas, Part B*, contact your nearest Statistics Canada Regional Reference Centre. ■

### Shipments of Rolled Steel

August 1993

Rolled steel shipments for August 1993 totalled 1 090 857 tonnes, up 16.3% from 937 957 tonnes in July 1993 and up 15.6% from 943 629 tonnes in August 1992.

Year-to-date shipments at the end of August 1993 totalled 8 959 976 tonnes, up 12.8% from 7 942 041 tonnes the previous year.

Available on CANSIM: matrices 58 and 122 (series 22-25).

The August 1993 issue of *Primary Iron and Steel* (41-001, \$5/\$50) will be available at a later date.

For more detailed information on this release, contact Greg Milsom (613-951-9827), Industry Division. ■

### Telephone Statistics

August 1993

Canada's 13 major telephone systems reported monthly revenues of \$1,160.7 million in August 1993, up 4.6% from August 1992.

Operating expenses totalled \$832.2 million, up 8.5% from August 1992. Net operating revenue totalled \$328.5 million, a 3.9% decrease from August 1992.

Available on CANSIM: matrix 355.

The August 1993 issue of *Telephone Statistics* (56-002, \$8.30/\$83) will be released shortly. See "How to Order Publications".

For more detailed information on this release, contact J. R. Slattery (613-951-2205), Services, Science and Technology Division. ■

### Railway Operating Statistics

July 1993

The seven selected railways in Canada reported a net loss of \$10.0 million in July 1993. Operating revenues totalled \$548.6 million, down 2.7% from July 1992.

Revenue-freight tonne-kilometres decreased 5.0% for the same period.

At the end of July 1993, year-to-date operating revenues decreased 1.6% from the same period in 1992.

Data for 1993 and previous years have been revised.

Available on CANSIM: matrix 142.

The July 1993 issue of *Railway Operating Statistics* (52-003, \$10.50/\$105) will be released later.

For more detailed information on this release, contact Angus MacLean (613-951-2528 or fax: 613-951-0579), Transportation Division. ■

---

## **Fur Farm Production**

1992

Production of mink for 1992 amounted to 951,000 pelts, up 2% from 929,000 pelts in 1991. The value of mink pelts sold in 1992 was \$20.2 million, down 2% from \$20.6 million in 1991.

Production of fox for 1992 amounted to 46,000 pelts, a 12% increase from 41,000 pelts in 1991. The value of fox pelts sold in 1992 was \$1.4 million, a 23% drop from \$1.9 million in 1991.

**Available on CANSIM: matrices 3400-3416.**

For further information, contact Peter Meszaros (613-951-2510), Agriculture Division. ■

## PUBLICATION RELEASED

**Pulpwood and Wood Residue Statistics,**  
August 1993.

**Catalogue number 25-001**

(Canada: \$6.10/\$61; United States: US\$7.30/US\$73;

Other Countries: US\$8.50/US\$85).

The paper used in this publication meets the minimum requirements of American National Standard for Information Sciences - Permanence of Paper for Printed Library Materials, ANSI Z39.48 - 1984.



### How to Order Publications

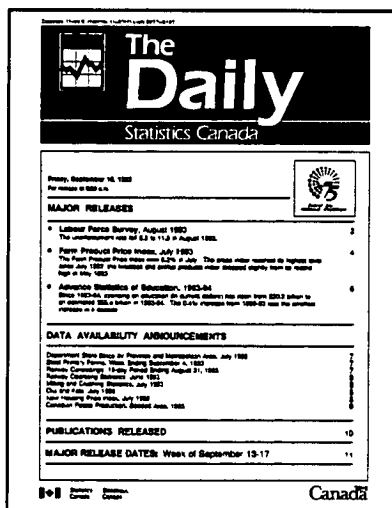
*Simplify your search for data with the Statistics Canada Catalogue 1993. Using the keyword index, you'll find sources for statistics on all areas of Canadian social and economic activity. For easy access to over 900 Statistics Canada products and services, order the Statistics Canada Catalogue 1993 (11-204E, \$13.95; United States: US\$17; Other Countries: US\$20).*

*You may order Statistics Canada products and services by telephone. From Canada and the United States, call toll-free 1-800-267-6677. From all other locations, call 613-951-7277 (not toll-free).*

*You may purchase Statistics Canada publications by writing to Publication Sales, Room 1710, Main Building, Statistics Canada, Ottawa K1A 0T6.*

*Please enclose a cheque or money order payable to the Receiver General for Canada/Publications. Provide full information on each publication order (catalogue number, title, issue). Canadian customers, please add 7% GST.*

*Publications may also be ordered from Statistics Canada's Regional Reference Centres in St. John's, Halifax, Montreal, Ottawa, Toronto, Winnipeg, Regina, Edmonton, Calgary and Vancouver, or from authorized bookstore agents or other booksellers.*



### Statistics Canada's Official Release Bulletin

Catalogue 11-001E. (Canada: \$120; United States: US\$144; Other Countries: US\$168.)

Published each working day by the Communications Division, Statistics Canada, 10-M, R.H. Coats Bldg., Tunney's Pasture, Ottawa, Ontario K1A 0T6.

Editor: Tim Prichard (613-951-1103)

Senior Editor: Greg Thomson (613-951-1187)

Published by authority of the Minister responsible for Statistics Canada. • Minister of Industry, Science and Technology, 1993. All rights reserved. No part of this publication may be reproduced, stored in a retrieval system or transmitted in any form or by any means, electronic, mechanical, photocopying, recording or otherwise without prior written permission from Licence Services, Marketing Division, Statistics Canada, Ottawa, Ontario, Canada K1A 0T6.



1010151104

The Daily, October 18, 1993

---

## REGIONAL REFERENCE CENTRES

---

Statistics Canada's Regional Reference Centres provide a full range of the agency's products and services. Each reference centre is equipped with a library and a sales counter where users can consult or purchase publications, microcomputer and CD-ROM diskettes, microfiche, maps and more.

Each centre has facilities to retrieve information from CANSIM and E-STAT, Statistics Canada's computerized data retrieval systems. A telephone inquiry service is available with toll-free access for clients who are located outside local calling areas. Many other valuable services – from seminars to consultations – are also offered. Call or write your nearest Statistics Canada Regional Reference Centre for more information.

### **Newfoundland and Labrador**

Advisory Services  
Statistics Canada  
3<sup>rd</sup> Floor  
Viking Building  
Crosbie Road  
St. John's, Newfoundland  
A1B 3P2  
Toll free: 1-800-565-7192  
Fax: 1-709-772-6433

### **Maritime Provinces**

Advisory Services  
Statistics Canada  
North American Life Centre  
1770 Market Street  
Halifax, Nova Scotia  
B3J 3M3  
Local calls: (902) 426-5331  
Toll free: 1-800-565-7192  
Fax: 1-902-426-9538

### **Quebec**

Advisory Services  
Statistics Canada  
Suite 412, East Tower  
Guy Favreau Complex  
200 René Lévesque Blvd. W.  
Montreal, Quebec  
H2Z 1X4  
Local calls: (514) 283-5725  
Toll free: 1-800-361-2831  
Fax: 1-514-283-9350

### **National Capital Region**

Advisory Services  
Statistical Reference Centre (NCR)  
Statistics Canada  
R.H. Coats Building Lobby  
Holland Avenue  
Tunney's Pasture  
Ottawa, Ontario  
K1A 0T6  
Local calls: (613) 951-8116  
If outside the local calling area, please dial  
the toll free number for your province.  
Fax: 1-613-951-0581

### **Ontario**

Advisory Services  
Statistics Canada  
10<sup>th</sup> Floor  
Arthur Meighen Building  
25 St. Clair Avenue East  
Toronto, Ontario  
M4T 1M4  
Local calls: (416) 973-6586  
Toll free: 1-800-263-1136  
Fax: 1-416-973-7475

### **Manitoba**

Advisory Services  
Statistics Canada  
MacDonald Building  
Suite 300  
344 Edmonton Street  
Winnipeg, Manitoba  
R3B 3L9  
Local calls: (204) 983-4020  
Toll free: 1-800-563-7828  
Fax: 1-204-983-7543

### **Saskatchewan**

Advisory Services  
Statistics Canada  
Avord Tower, 9<sup>th</sup> Floor  
2002 Victoria Avenue  
Regina, Saskatchewan  
S4P 0R7  
Local calls: (306) 780-5405  
Toll free: 1-800-563-7828  
Fax: 1-306-780-5403

### **Alberta and the Northwest Territories**

Advisory Services  
Statistics Canada  
8<sup>th</sup> Floor, Park Square  
10001 Bellamy Hill  
Edmonton, Alberta  
T5J 3B6  
Local calls: (403) 495-3027  
Toll free: 1-800-563-7828  
Fax: 1-403-495-5318

### **Southern Alberta**

Advisory Services  
Statistics Canada  
First Street Plaza, Room 401  
138-4<sup>th</sup> Avenue Southeast  
Calgary, Alberta  
T2G 4Z6  
Local calls: (403) 292-4181  
Toll free: 1-800-563-7828  
Fax: 1-403-292-4958

### **British Columbia and the Yukon**

Advisory Services  
Statistics Canada  
Sinclair Centre, Suite 440F  
757 West Hastings Street  
Vancouver, B.C. V6C 3C9  
Local calls: (604) 666-3691  
Toll free: 1-800-663-1551  
Fax: 1-604-666-4863

### **Telecommunications Device for the Hearing Impaired**

Toll free: 1-800-363-7629