

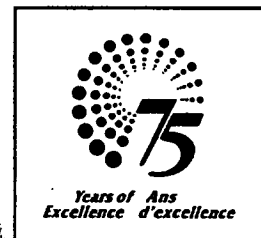
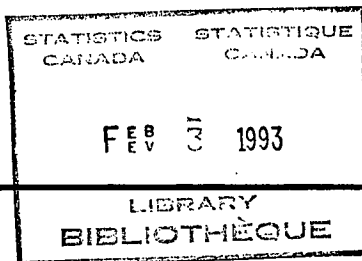


The Daily

Statistics Canada

Wednesday, February 3, 1993

For release at 8:30 a.m.



MAJOR RELEASES

- **Quarterly Business Conditions Survey, Canadian Manufacturing Industries, January 1993** 2

On balance, Canadian manufacturers' opinions concerning current orders received jumped in January 1993. Optimism about the expected volume of production increased for the third consecutive quarter.
- **Help-wanted Index, January 1993** 6

In January, the revised Help-wanted Index (1991 = 100) for Canada remained unchanged at 88.

DATA AVAILABILITY ANNOUNCEMENTS

- Coal and Coke Statistics, November 1992 8
- Industrial Chemicals and Synthetic Resins, December 1992 8

PUBLICATIONS RELEASED

9

NOT FOR LOAN
NE S'EMPRUNTE PAS



Statistics
Canada

Statistique
Canada

Canada

MAJOR RELEASES

Quarterly Business Conditions Survey, Canadian Manufacturing Industries

January 1993

Seasonally Adjusted

The balance of Canadian manufacturers' opinions about current orders received jumped between the October 1992 and January 1993 surveys. Optimism about the expected volume of production increased for the third consecutive quarter. Although still negative, the balance of opinion on employment prospects in the next three months and on the current backlog of unfilled orders both improved in the January 1993 survey.

Highlights

- Canadian manufacturers' optimism about the **expected volume of production** rose for the third consecutive quarter. The balance of opinion for January 1993 was +18, six points higher than the October 1992 survey.

The balance of +18 in January is calculated by subtracting the pessimistic 18% who indicated a "lower than normal" expected volume of production from the optimistic 36% who reported "higher than normal" expected volume of production. The remaining 46% expected a normal volume of production.

- The balance of opinion for current **orders received** jumped 28 points to +16 in January 1993, a level not exceeded since the fourth quarter of 1987. The balance had been negative since the second quarter of 1989. The largest contributors to the latest increase were the transportation equipment, primary metals, wood and electrical and electronic products industries.
- The January 1993 balance of opinion concerning **employment prospects** in the next three months increased five points to -12. This indicates that, on balance, manufacturing employment is expected to decrease but at a slower rate. Although the balance of opinion has been negative for 15 consecutive quarters, it has improved from the low of -25 posted during the second quarter of 1991.

Note to Users

For the first time, this release features data on expectations for the change in manufacturing employment in the next quarter.

Production, inventories and orders responses to the Business Conditions Survey are weighted by the value of the respondent's shipments reported to the 1989 Annual Survey of Manufactures. Weights for the employment prospects responses are based on the number of employees reported to the Annual Survey of Manufactures.

The balance is the difference between the proportion associated with the positive-type response (e.g., higher volume of production) and the proportion related to the negative-type response (e.g., lower volume of production). Both the raw data (raw) and seasonally adjusted (s.a.) data are given for the balance. The seasonally adjusted value for the neutral components (e.g., expected production about the same) is calculated by subtracting the sum of the seasonally adjusted values of the other two components from 100.

The Business Conditions Survey is carried out in January, April, July and October and the majority of responses are recorded in the first two weeks of these months. Results are based on replies from about 5,000 manufacturers.

- The balance of opinion concerning the current **backlog of unfilled orders** stood at -23 in the January 1993 survey. This was a five-point improvement over October 1992 and a major gain compared to the recent low of -58 recorded in the second quarter of 1991.

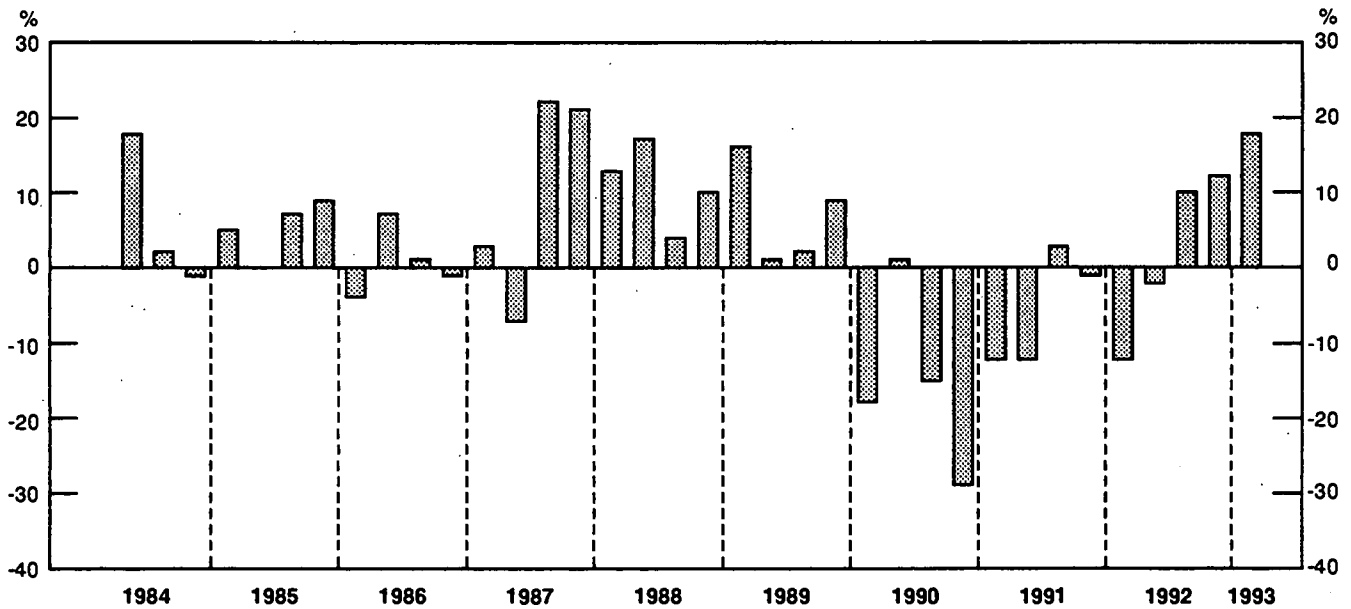
Unfilled orders are the stock of orders which will generate future shipments, assuming that orders are not cancelled.

- Canadian manufacturers indicated that they are still concerned about the relatively high levels of **finished product inventories** on hand. The current balance of -27 decreased one point from October 1992.

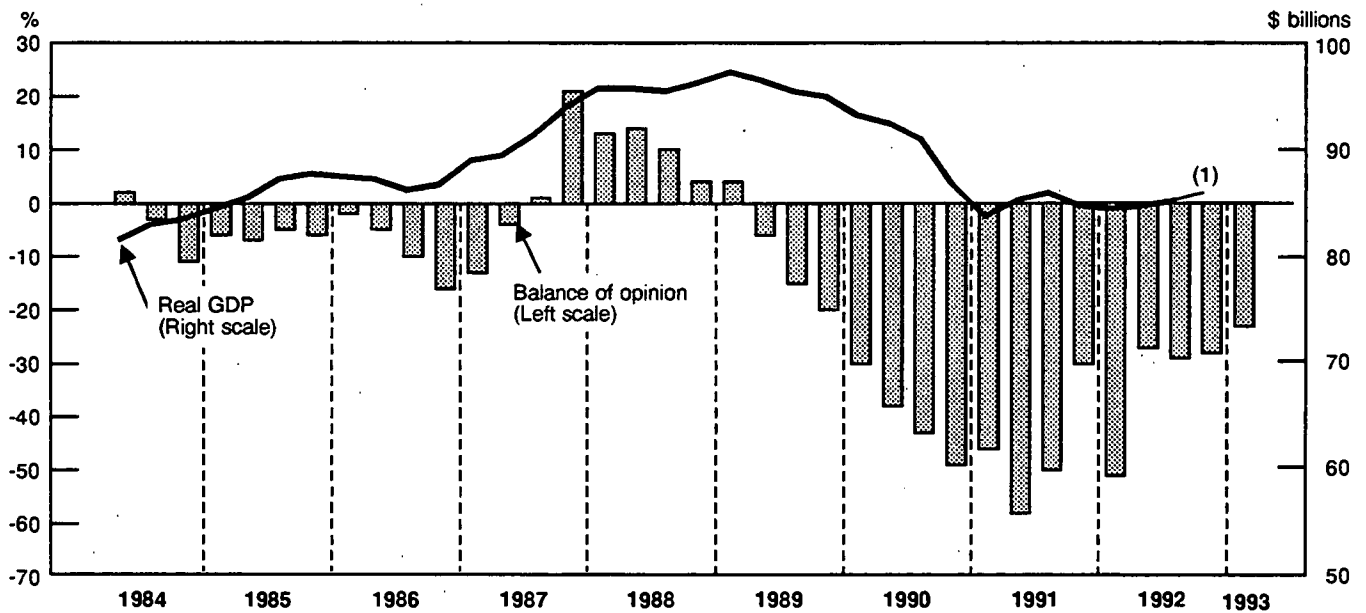
Unadjusted

- About 85% of Canadian manufacturers did not report any particular production difficulties in the January 1993 survey. Some 5% reported that a shortage of working capital impeded their level of production, down from 6% in October 1992. Only 1% of respondents indicated that a shortage of skilled labour is a production impediment. For the ninth consecutive quarter, less than 0.5% of respondents reported that a shortage of unskilled labour is impeding their production.

**Balance of Opinion for Expected Volume of Production
Next Three Months vs Last Three Months**



**Balance of Opinion on Backlog of Unfilled Orders
and Real GDP for Manufacturing Industries
Seasonally adjusted**



(1) ——— October and November 1992

Please note that survey weights and sampled units have been benchmarked to the 1989 Annual Survey of Manufactures (ASM) and data back to 1989 have been revised accordingly. In general, trends for the revised data have remained the same as those prior to benchmarking to the 1989 ASM.

Available on CANSIM (raw data only): matrices 2843-2845.

For further information, please contact Claude Robillard (613-951-3507), Monthly Survey of Manufacturing Section, Industry Division. □

Business Conditions Survey, Canadian Manufacturing Industries

January 1993

	January 1992	April 1992	July 1992	October 1992	January 1993
seasonally adjusted					
Volume of production during next three months compared with last three months will be:					
About the same	48	46	46	48	46
Higher	20	26	32	32	36
Lower	32	28	22	20	18
Balance	-12	-2	10	12	18
Balance (raw)	-24	18	-3	15	6
seasonally adjusted					
Orders received are:					
About the same	50	65	48	62	58
Rising	15	11	21	13	29
Declining	35	24	31	25	13
Balance	-20	-13	-10	-12	16
Balance (raw)	-27	-8	-8	-15	14
seasonally adjusted					
Present backlog of unfilled orders is:					
About normal	43	45	51	58	65
Higher than Normal	3	14	10	7	6
Lower than Normal	54	41	39	35	29
Balance	-51	-27	-29	-28	-23
Balance (raw)	-53	-27	-28	-27	-22
seasonally adjusted					
Finished product inventory on hand is:					
About right	63	64	71	68	67
Too low	3	3	6	3	3
Too high ¹	34	33	23	29	30
Balance	-31	-30	-17	-26	-27
Balance (raw)	-33	-31	-17	-25	-28
seasonally adjusted					
Employment during the next three months will:					
Change little	67	64	63	67	66
Increase	7	9	10	8	11
Decrease	26	27	27	25	23
Balance	-19	-18	-17	-17	-12
Balance (raw)	-23	-9	-14	-25	-17
raw					
Sources of production difficulties:					
Working capital shortage	8	8	7	6	5
Skilled labour shortage	2	2	3	2	2
Unskilled labour shortage	0	0	0	0	0
Raw material shortage	2	3	3	3	3
Other difficulties	5	6	8	7	4
No difficulties	83	81	78	80	85

¹ No evident seasonality.

Help-wanted Index

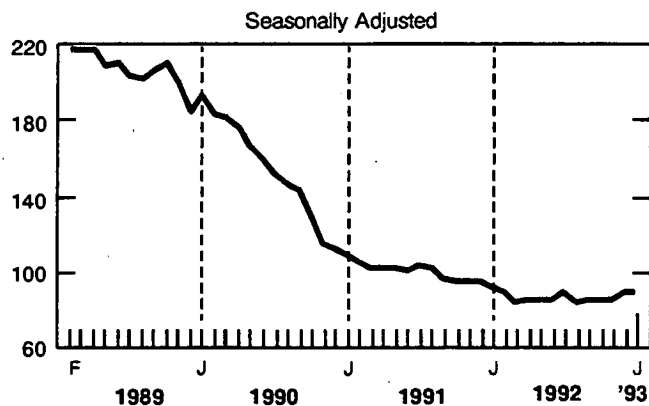
January 1993

The Help-wanted Index serves as an early indicator of changes in the demand for labour by monitoring the number of help-wanted ads published in 20 major metropolitan areas.

Highlights - Seasonally Adjusted

- After reaching a peak of 217 in February 1989, the revised Help-wanted Index for Canada (1991=100) generally decreased until March 1992, when it stood at 83. Between March and November, it fluctuated around this level, then it increased four points to 88 in December 1992. The index remained unchanged in January 1993.

Help-wanted Index, Canada (1991 = 100)



Note to Users

The Help-wanted Index has been rebased to 1991 (1991=100) and all values have been revised. Monthly data starting in 1981 are available on CANSIM and will be published in an occasional report, Help-wanted Index (71-540), available in April. On request, the revised data for Canada and the five regions can also be obtained for \$30 by fax or on diskette. For more information, please contact Carole Lacroix (613-951-4039).

Changes by Region

- Between December 1992 and January 1993, the revised regional Help-wanted Indexes increased 2% both in Quebec (from 87 to 89) and in the Atlantic provinces (from 91 to 93). However, the index decreased 8% in Ontario (from 91 to 84), 1% in the Prairie provinces (from 83 to 82) and 1% in British Columbia (from 89 to 88).
- Compared with January 1992, the revised Help-wanted Index fell 7% in the Atlantic provinces, 6% in Quebec and 5% in Ontario. The index remained unchanged in the Prairie provinces, but it increased 1% in British Columbia.

Available on CANSIM: matrix 105 (levels 8 and 9).

Help-wanted indices for census metropolitan areas and trend-cycle estimates are available on request. The trend-cycle estimates can also be obtained directly from CANSIM.

For further information, contact Carole Lacroix (613-951-4039) or André Picard (613-951-4045), Labour Division, (fax: 613-951-4087). □

Help-wanted Index (1991 = 100), Canada and Regions

Year and month	Canada	Atlantic Region	Quebec	Ontario	Prairie Region	British Columbia
Seasonally Adjusted						
1992						
January	91	100	95	88	82	87
February	88	84	89	88	86	89
March	83	81	86	78	91	85
April	85	80	90	83	82	83
May	84	87	83	87	81	87
June	84	85	85	85	80	86
July	89	83	94	91	78	87
August	83	84	82	85	81	86
September	84	84	84	88	77	85
October	85	93	86	86	79	91
November	84	87	81	88	81	87
December	88	91	87	91	83	89
1993						
January	88	93	89	84	82	88

DATA AVAILABILITY ANNOUNCEMENTS

Coal and Coke Statistics

November 1992

Highlights

- Canadian production of coal totalled 5 052 kilotonnes in November 1992, down 18.9% from November 1991. Year-to-date production at the end of November 1992 stood at 60 299 kilotonnes, down 7.2% from the year before.
- Exports in November fell to 1 659 kilotonnes, down 39.2% from November 1991, while imports decreased 20.7% to 1 200 kilotonnes. From January to November 1992, exports totalled 25 338 kilotonnes, 18.5% below the year-earlier level.
- Coke production increased to 307 kilotonnes, up 9.3% from November 1991.

Available on CANSIM: matrix 9.

The November 1992 issue of *Coal and Coke Statistics* (45-002, \$10/\$100) will be available the first week of February. See "How to Order Publications".

For more detailed information on this release, contact Dave Madsen (613-951-9823), Energy Section, Industry Division. ■

Industrial Chemicals and Synthetic Resins

December 1992

Canadian chemical firms produced 140 120 tonnes of polyethylene synthetic resins in December 1992, a 2.7% decrease from the 143 938 tonnes produced in December 1991.

From January to December 1992, production totalled 1 654 062r (revised) tonnes, up 5.6% from the 1 566 689r tonnes produced during the same period in 1991.

Data are also available on Canadian production of three other types of synthetic resins and 24 industrial chemicals for December 1992 and December 1991.

Available on CANSIM: matrix 951.

The December 1992 issue of *Industrial Chemicals and Synthetic Resins* (46-002, \$5.60/\$56) will be available at a later date.

For more detailed information on this release, contact Raj Sehdev (613-951-3513), Industry Division. ■

PUBLICATIONS RELEASED

Cereals and Oilseeds Review, November 1992.
Catalogue number 22-007

(Canada: \$13.80/\$138; United States: US\$16.60/US\$166; Other Countries: US\$19.30/US\$193).

Gas Utilities, October 1992.

Catalogue number 55-002

(Canada: \$12.70/\$127; United States: US\$15.20/US\$152; Other Countries: US\$17.80/US\$178).

Radio and Television Broadcasting, 1991.
Catalogue number 56-204

(Canada: \$26; United States: US\$31; Other Countries: US\$36).

The paper used in this publication meets the minimum requirements of American National Standard for Information Sciences - Permanence of Paper for Printed Library Materials, ANSI Z39.48 - 1984.



How to Order Publications

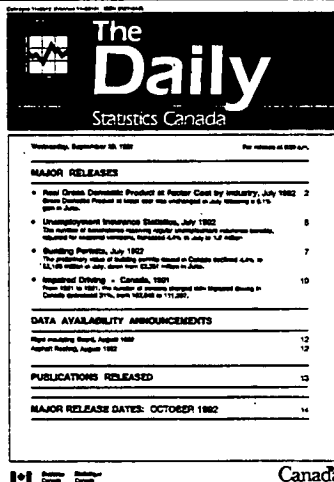
Simplify your search for data with the Statistics Canada Catalogue 1992. Using the keyword index, you'll find sources for statistics on all areas of Canadian social and economic activity. For easy access to over 800 Statistics Canada products and services, order the Statistics Canada Catalogue 1992 (11-204E, \$13.95; United States: US\$17; Other Countries: US\$20).

You may order Statistics Canada products and services by telephone. From Canada and the United States, call toll-free 1-800-267-6677. From all other locations, call 613-951-7277 (not toll-free).

You may purchase Statistics Canada publications by writing to Publication Sales, Room 1710, Main Building, Statistics Canada, Ottawa K1A 0T6.

Please enclose a cheque or money order payable to the Receiver General for Canada/Publications. Provide full information on each publication order (catalogue number, title, issue). Canadian customers, please add 7% GST.

Publications may also be ordered from Statistics Canada's Regional Reference Centres in St. John's, Halifax, Montreal, Ottawa, Toronto, Winnipeg, Regina, Edmonton, Calgary and Vancouver, or from authorized bookstore agents or other booksellers.



Statistics Canada's Official Release Bulletin for Statistical Information

Catalogue 11-001E. Price: Canada: \$120.00 annually; United States: US\$144.00 annually; Other Countries: US\$168.00 annually

Published by the Communications Division
Statistics Canada, 10-N, R.H. Coats Bldg., Ottawa K1A 0T6.

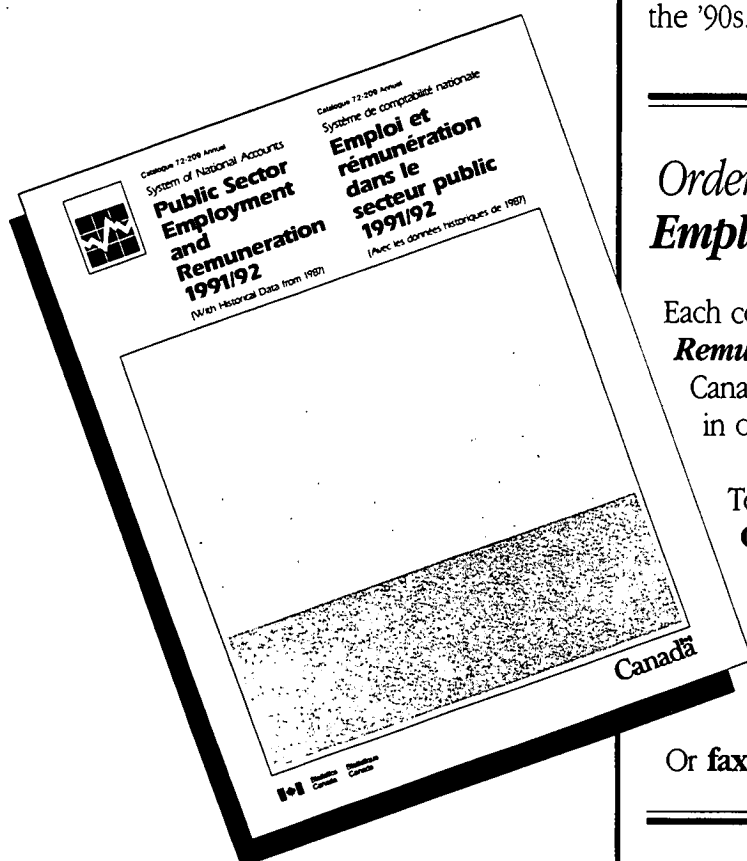
Senior Editor: Greg Thomson (613-951-1187)
Editor: Tim Prichard (613-951-1103)

Published by authority of the Minister responsible for Statistics Canada. © Minister of Industry, Science and Technology, 1993. All rights reserved. No part of this publication may be reproduced, stored in a retrieval system or transmitted in any form or by any means, electronic, mechanical, photocopying, recording or otherwise without prior written permission from Licence Services, Marketing Division, Statistics Canada, Ottawa, Ontario, Canada K1A 0T6.



1010134228

the inside story on 20% of the labour force



Uncovering the latest labour changes in the public sector can be tough. But now there's a publication to help.

Public Sector Employment and Remuneration 1991/92, (With Historical Data from 1987) gives you reliable data, consistent comparisons, and concise analysis on the changing levels of public sector employment.

This publication brings you all the facts! ***Public Sector Employment and Remuneration 1991/92*** provides you with the most up-to-date public sector employment statistics, including for the first time, **FULL COVERAGE OF THE PUBLIC SECTOR** and new **CENSUS METROPOLITAN AREA DATA** for federal and local governments.

This valuable working tool will help you to:

- Chart changes in public sector employment: nationally, provincially and locally.
- Make direct comparisons between employment levels: federal, provincial, inter-provincial, and municipal.

Don't miss this opportunity to get the information you need to understand where we are and make informed decisions about public sector employment strategies for the '90s.

*Order your copy of **Public Sector Employment and Remuneration** today!*

Each copy of ***Public Sector Employment and Remuneration*** (Catalogue no. 72-209) costs only \$39 in Canada (plus GST), US\$47 in the United States and US\$55 in other countries.

To order, write to **Publication Sales, Statistics Canada, Ottawa, Ontario, K1A 0T6**, or contact the nearest Statistics Canada Regional Office listed in this publication.

For faster ordering, call toll-free **1-800-267-6677** and use your VISA or MasterCard.

Or **fax** your order to **(613) 951-1584**.
