



# The Daily

Statistics Canada

Tuesday, March 16, 1993  
For release at 8:30 a.m.

NOT FOR LOAN  
NE S'EMPRUNTE PAS



## MAJOR RELEASE

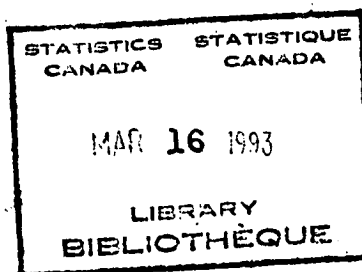
- **Monthly Survey of Manufacturing, January 1993** 2  
Shipments declined 0.3% in January, following three consecutive increases. Despite the month-to-month decline, the trend for shipments increased for the 10th consecutive month.

## DATA AVAILABILITY ANNOUNCEMENTS

- Quarterly Demographic Statistics, October-December 1992 6
- Coal and Coke Statistics, December 1992 6

## PUBLICATION RELEASED 7

## REGIONAL REFERENCE CENTRES 8



Statistics  
Canada

Statistique  
Canada

Canada

## MAJOR RELEASE

### Monthly Survey of Manufacturing

January 1993

#### Seasonally Adjusted

The value of shipments decreased 0.3% in January, the first decline in four months. Fifteen of the 22 major groups recorded lower shipment levels in January, notably electrical and electronic products and the refined petroleum and coal products industries. The paper and allied products and wood industries recorded the largest increases. On a year-over-year basis, total manufacturing shipments for January 1993 were much stronger than for January 1992, up 9.4%.

Unfilled orders increased 0.4% in January, the second increase in a row and the first back-to-back increases since February and March 1989. New orders fell 1.2% following three consecutive increases. These movements in orders mirrored those recently reported for the United States for January. The decrease in new orders in both countries was largely due to a big drop in demand for aircraft.

The short-term trend smooths out irregular month-to-month movements that are not sustained over a longer period. The trend for shipments increased for the 10th consecutive period but at a slower rate over the two most recent periods. The trend for the motor vehicle, parts and accessories industries has increased strongly over the last five periods. The trend for the rest of manufacturing also showed strength with 10 consecutive monthly increases, but at a slower pace over the last four periods.

The trend for unfilled orders was flat in the most recent period, after falling since April 1989. The inventory trend has shown no change over the five most recent periods.

#### Highlights

##### Shipments: -0.3%

- Preliminary estimates indicate that Canadian manufacturers' shipments decreased 0.3% to \$24.3 billion in January. Fifteen of the 22 major groups (accounting for 72% of shipment values) decreased, but seven increased. The largest decreases in dollar terms were in electrical and

electronic products (-6.5%) and in the refined petroleum and coal products (-3.1%) industries. The largest increases in dollar terms were in the paper and allied products (3.9%) and wood (4.0%) industries.

##### Trend for Shipments: +0.7%

- The trend for shipments rose for the 10th month in a row but at a slower pace for the last two periods. The trend for 14 of the 22 major groups (accounting for 74% of shipment values) increased in the most recent period. The most significant increases in dollar terms were in the transportation equipment, wood, and primary metal industries.

##### Inventories (owned): -0.8%

- Inventories (owned) decreased 0.8% in January to \$33.9 billion with 12 of the 22 major groups recording decreases. The largest decreases were in refined petroleum and coal products (-17.2%) and the primary metal (-2.0%) industries. Chemicals (1.2%) and non-metallic mineral products (3.0%) recorded the largest increases. The trend for inventories (owned), which had been declining since January 1990, was flat for the last five periods.

##### Inventories to Shipments Ratio: 1.39

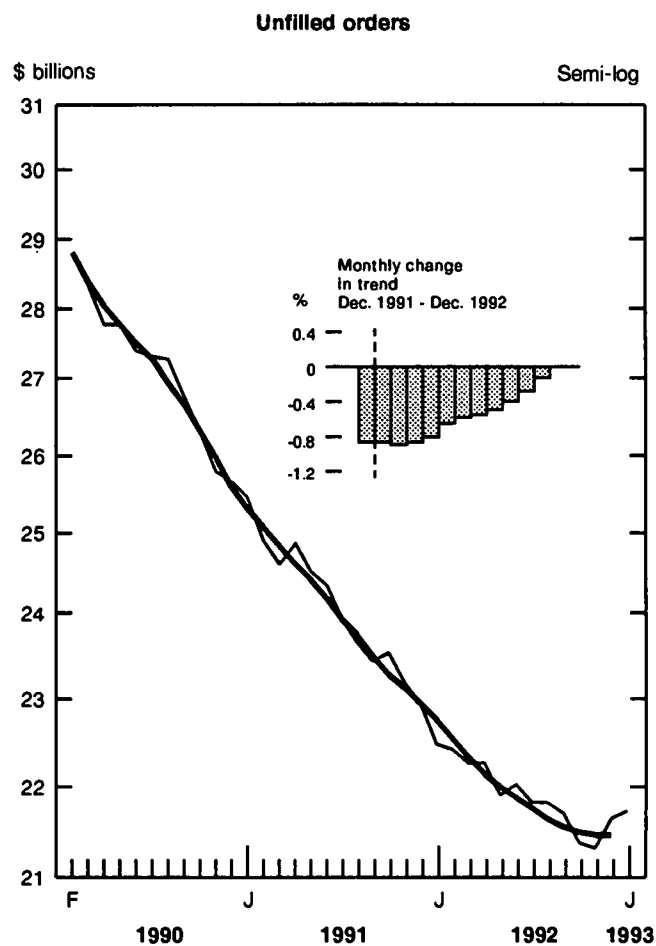
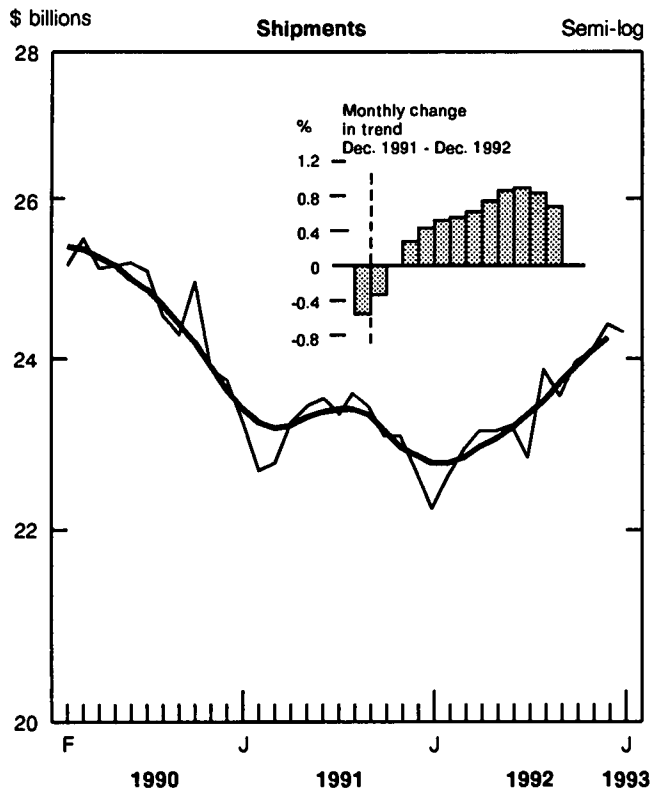
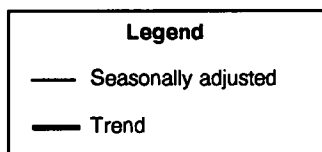
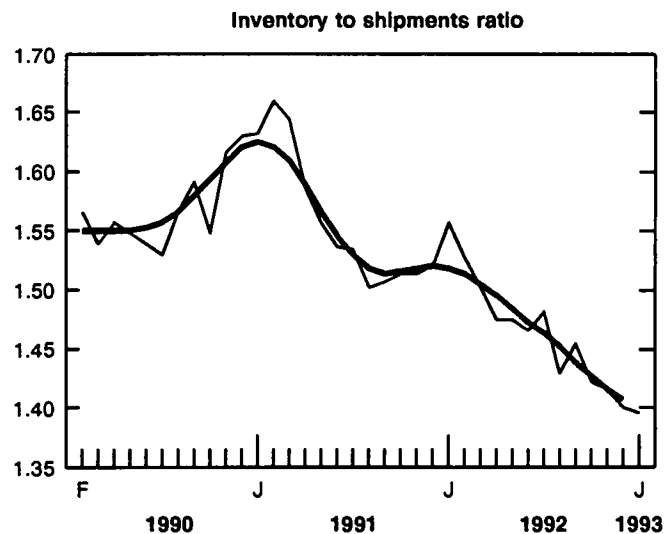
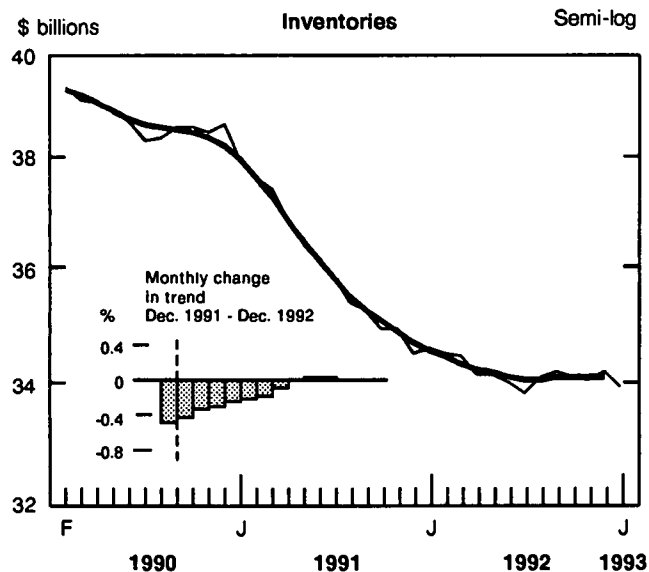
- The inventories to shipments ratio declined from 1.40 in December to 1.39 in January, an historical low. The trend declined from a peak of 1.52 in January 1992 to 1.40 in the most recent period.

##### Unfilled Orders: +0.4%

- Unfilled orders increased 0.4% to \$21.7 billion, the second increase in a row. The largest increases were in the electrical and electronic products (1.8%), primary metal (2.8%) and clothing (15.1%) industries. The trend, which had been falling since April 1989, showed no change in the most current period.

Unfilled orders are the stock of orders which will generate future shipments, assuming that orders are not cancelled.

Manufacturers' Inventories, Shipments and Unfilled Orders, Seasonally Adjusted, January 1993



---

**New orders** are defined as the sum of shipments for the current month (i.e., orders received this month and shipped within the same month) plus the change in unfilled orders.

**New Orders: -1.2%**

- New orders decreased 1.2% to \$24.4 billion, following three consecutive increases. The **trend** for new orders has risen since March 1992, rising at an average rate of 0.9% per month over the last five periods.

**Year-to-date: + 9.4%**

- Manufacturers' shipments for January 1993 were estimated at \$24.3 billion, 9.4% above the level recorded for January 1992.

**Available on CANSIM: matrices 9550-9580.**

For more information, please consult the January 1993 issue of *Monthly Survey of Manufacturing* (31-001, \$17.30/\$173), which will be available shortly.

Data for shipments by province in greater detail than normally published may be available on request. For further information, please contact Bob Traversy, Information and Classification Section (613-951-9497) or the Monthly Survey of Manufacturing Section (613-951-9832), Industry Division. □

# Shipments, Inventories and Orders in all Manufacturing Industries

January 1993

Period	Not seasonally adjusted				Seasonally adjusted			
	Shipments	Inventories	Unfilled orders	New orders	Shipments	Inventories	Unfilled orders	New orders
\$ millions								
January 1992	20,532	34,763	22,451	20,428	22,221	34,562	22,519	21,780
February 1992	21,479	35,177	22,463	21,491	22,577	34,481	22,441	22,499
March 1992	23,839	35,163	22,377	23,753	22,904	34,405	22,289	22,752
April 1992	23,458	34,648	22,397	23,478	23,122	34,092	22,291	23,123
May 1992	24,105	34,374	22,105	23,813	23,121	34,089	21,926	22,756
June 1992	25,290	33,704	22,011	25,196	23,165	33,945	22,049	23,288
July 1992	21,130	33,347	21,835	20,954	22,813	33,793	21,817	22,581
August 1992	23,203	33,772	22,038	23,405	23,844	34,052	21,850	23,877
September 1992	24,826	33,750	21,778	24,566	23,516	34,169	21,721	23,387
October 1992	25,478	33,713	21,242	24,942	23,939	34,036	21,395	23,612
November 1992	24,201	33,807	21,124	24,084	24,081	34,031	21,349	24,036
December 1992	22,943	33,568	21,256	23,075	24,396	34,129	21,655	24,701
January 1993	21,423	34,065	21,751	21,919	24,311	33,860	21,740	24,396

Period	Seasonally Adjusted									
	Shipments		Inventories		Inventory to shipments ratio		Unfilled orders		New orders	
	S.A.	Trend	S.A.	Trend	S.A.	Trend	S.A.	Trend	S.A.	Trend
	Month-to-month % change				Ratio		Month-to-month % change			
January 1992	-2.0	-0.4	0.3	-0.4	1.56	1.52	-1.9	-0.9	-2.8	-0.3
February 1992	1.6	0.0	-0.2	-0.3	1.53	1.51	-0.3	-0.9	3.3	0.0
March 1992	1.5	0.3	-0.2	-0.3	1.50	1.50	-0.7	-0.9	1.1	0.3
April 1992	0.9	0.4	-0.9	-0.3	1.47	1.49	0.0	-0.8	1.6	0.5
May 1992	0.0	0.5	0.0	-0.2	1.47	1.48	-1.6	-0.7	-1.6	0.7
June 1992	0.2	0.6	-0.4	-0.2	1.47	1.47	0.6	-0.6	2.3	0.6
July 1992	-1.5	0.6	-0.4	-0.1	1.48	1.46	-1.0	-0.6	-3.0	0.6
August 1992	4.5	0.7	0.8	0.0	1.43	1.45	0.1	-0.5	5.7	0.8
September 1992	-1.4	0.9	0.3	0.0	1.45	1.44	-0.6	-0.4	-2.0	1.0
October 1992	1.8	0.9	-0.4	0.0	1.42	1.43	-1.5	-0.3	1.0	1.0
November 1992	0.6	0.8	0.0	0.0	1.41	1.41	-0.2	-0.1	1.8	0.9
December 1992	1.3	0.7	0.3	0.0	1.40	1.40	1.4	0.0	2.8	0.8
January 1993	-0.3	*	-0.8	*	1.39	*	0.4	*	-1.2	*

\* The short-term trend represents a weighted average of the data.

## DATA AVAILABILITY ANNOUNCEMENTS

### Quarterly Demographic Statistics for Canada, the Provinces and Territories

October-December 1992

The preliminary postcensal estimates of population for Canada, the provinces and territories as of January 1, 1993 are now available.

**Note:** The estimates presented below are still based on 1986 Census counts and do not take into account the results of the 1991 Census. In September 1993, these estimates will be revised using the 1991 Census data and will also be adjusted for the net census undercount.

Estimates of population from June 1, 1990 to May 31, 1991 have been finalized, while those from July 1, 1991 to October 1, 1992 have been updated.

### Postcensal Estimates of Population for Canada, the Provinces and Territories

January 1, 1993 (preliminary), 1992 (updated), and 1991 (final)

	Population January 1			Annual growth rate for years ending December 31	
	1993 <sup>PP</sup>	1992 <sup>Pr</sup>	1991 <sup>Pd</sup>	1992	1991
	(numbers)			(%)	
Canada	27,647,000	27,237,300	26,842,600	1.5	1.5
Newfoundland	576,600	576,100	574,000	0.1	0.4
Prince Edward Island	131,400	130,200	131,000	0.9	-0.6
Nova Scotia	909,100	905,300	898,500	0.4	0.8
New Brunswick	729,900	727,900	725,700	0.3	0.3
Quebec	6,968,800	6,895,400	6,813,100	1.1	1.2
Ontario	10,212,700	10,019,200	9,845,900	1.9	1.7
Manitoba	1,099,700	1,095,000	1,090,800	0.4	0.4
Saskatchewan	992,000	991,700	992,800	0.0	-0.1
Alberta	2,584,100	2,547,900	2,504,400	1.4	1.7
British Columbia	3,356,800	3,265,300	3,185,500	2.8	2.5
Yukon	29,000	27,300	26,300	6.2	3.7
Northwest Territories	56,800	56,100	54,600	1.4	2.7

<sup>PP</sup> Preliminary postcensal estimates.

<sup>Pr</sup> Updated postcensal estimates.

<sup>Pd</sup> Final postcensal estimates.

**Note:** Figures have been rounded independently to the nearest hundred.

Available on CANSIM: matrices 1 (quarterly estimates); 2, 3 and 397 (immigrants); 6516 (emigrants); 4, 5 and 6 (births, deaths and marriages); 5731 and 6982 (interprovincial migration - Family Allowances); and 6981 (interprovincial migration - Revenue Canada).

These estimates will appear in *Quarterly Demographic Statistics* (91-002, \$7.50/\$30), which will be released in a few weeks.

For more detailed information, please contact your nearest Statistics Canada Regional Reference Centre or the relevant division. For vital statistics (births, deaths, marriages), contact N. Nault (613-951-2990), Canadian Center for Health Information. For other demographic estimates, contact Lise Champagne (613-951-2320), Demography Division. ■

### Coal and Coke Statistics

December 1992

#### Highlights

- Canadian production of coal totalled 5 062 kilotonnes in December 1992, down 17.6% from December 1991. From January to December 1992, production amounted to 65 362 kilotonnes, down 8.1% from the previous year.
- Exports in December fell to 2 072 kilotonnes, down 31.5% from December 1991, while imports decreased 19.9% to 1 164 kilotonnes. From January to December 1992, exports totalled 27 410 kilotonnes, 19.6% below the previous year's level.
- Coke production increased to 315 kilotonnes in December, up 8.7% from December 1991.

Available on CANSIM: matrix 9.

The December 1992 issue of *Coal and Coke Statistics* (45-002, \$10/\$100) will be available the third week of March. See "How to Order Publications".

For more detailed information on this release, contact Dave Madsen (613-951-9823), Energy Section, Industry Division. ■

## PUBLICATION RELEASED

**Energy Statistics Handbook**, March 1993.  
**Catalogue number 57-601**  
(Canada: \$300; United States: US\$360;  
Other Countries: US\$420).

The paper used in this publication meets the minimum requirements of American National Standard for Information Sciences - Permanence of Paper for Printed Library Materials, ANSI Z39.48 - 1984.



### How to Order Publications

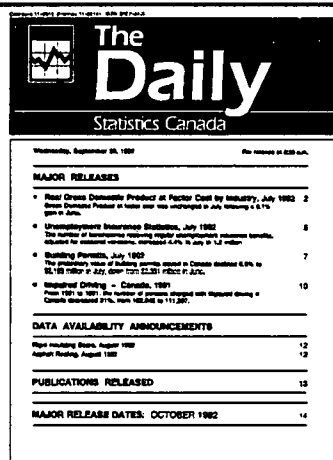
*Simplify your search for data with the Statistics Canada Catalogue 1993. Using the keyword index, you'll find sources for statistics on all areas of Canadian social and economic activity. For easy access to over 900 Statistics Canada products and services, order the Statistics Canada Catalogue 1993 (11-204E, \$13.95; United States: US\$17; Other Countries: US\$20).*

*You may order Statistics Canada products and services by telephone. From Canada and the United States, call toll-free 1-800-267-6677. From all other locations, call 613-951-7277 (not toll-free).*

*You may purchase Statistics Canada publications by writing to Publication Sales, Room 1710, Main Building, Statistics Canada, Ottawa K1A 0T6.*

*Please enclose a cheque or money order payable to the Receiver General for Canada/Publications. Provide full information on each publication order (catalogue number, title, issue). Canadian customers, please add 7% GST.*

*Publications may also be ordered from Statistics Canada's Regional Reference Centres in St. John's, Halifax, Montreal, Ottawa, Toronto, Winnipeg, Regina, Edmonton, Calgary and Vancouver, or from authorized bookstore agents or other booksellers.*



The Daily  
Statistics Canada

Wednesday, September 30, 1992 Price: \$2.00 (incl. GST)

<b>MAJOR RELEASES</b>	
• Real Gross Domestic Product at Factor Cost by Industry, July 1992	2
• Unemployment Insurance Statistics, July 1992	8
• Building Permits, July 1992	7
• Wholesale Pricing - Canada, 1991	10
<b>DATA AVAILABILITY ANNOUNCEMENTS</b>	
• Night-mending Statistics, August 1992	12
• Asylum Seeking, August 1992	12
<b>PUBLICATIONS RELEASED</b>	
• Major Release Dates, October 1992	14

### Statistics Canada's Official Release Bulletin for Statistical Information

Catalogue 11-001E. Price: Canada: \$120.00 annually; United States: US\$144.00 annually; Other Countries: US\$168.00 annually

Published by the Communications Division  
Statistics Canada, 10-N, R.H. Coats Bldg., Tunney's Pasture, Ottawa, Ontario K1A 0T6.

Senior Editor: Greg Thomson (613-951-1187)  
Editor: Tim Prichard (613-951-1103)

Published by authority of the Minister responsible for Statistics Canada. © Minister of Industry, Science and Technology, 1993. All rights reserved. No part of this publication may be reproduced, stored in a retrieval system or transmitted in any form or by any means, electronic, mechanical, photocopying, recording or otherwise without prior written permission from Licence Services, Marketing Division, Statistics Canada, Ottawa, Ontario, Canada K1A 0T6.



1010137361

The Daily, March 16, 1993

## REGIONAL REFERENCE CENTRES

Statistics Canada's Regional Reference Centres provide a full range of the agency's products and services. Each reference centre is equipped with a library and a sales counter where users can consult or purchase publications, microcomputer and CD-ROM diskettes, microfiche, maps and more.

Each centre has facilities to retrieve information from CANSIM and E-STAT, Statistics Canada's computerized data retrieval systems. A telephone inquiry service is available with toll-free access for clients who are located outside local calling areas. Many other valuable services – from seminars to consultations – are also offered. Call or write your nearest Statistics Canada Regional Reference Centre for more information.

### **Newfoundland and Labrador**

Advisory Services  
Statistics Canada  
3<sup>rd</sup> Floor  
Viking Building  
Crosbie Road  
St. John's, Newfoundland  
A1B 3P2  
Local calls: (709) 772-4073  
Toll free: 1-800-563-4255  
Fax: 1-709-772-6433

### **Maritime Provinces**

Advisory Services  
Statistics Canada  
North American Life Centre  
1770 Market Street  
Halifax, Nova Scotia  
B3J 3M3  
Local calls: (902) 426-5331  
Toll free: 1-800-565-7192  
Fax: 1-902-426-9538

### **Quebec**

Advisory Services  
Statistics Canada  
Suite 412, East Tower  
Guy Favreau Complex  
200 René Lévesque Blvd. W.  
Montreal, Quebec  
H2Z 1X4  
Local calls: (514) 283-5725  
Toll free: 1-800-361-2831  
Fax: 1-514-283-9350

### **National Capital Region**

Advisory Services  
Statistical Reference Centre (NCR)  
Statistics Canada  
R.H. Coats Building Lobby  
Holland Avenue  
Tunney's Pasture  
Ottawa, Ontario  
K1A 0T6  
Local calls: (613) 951-8116  
If outside the local calling area, please dial  
the toll free number for your province.  
Fax: 1-613-951-0581

### **Ontario**

Advisory Services  
Statistics Canada  
10<sup>th</sup> Floor  
Arthur Meighen Building  
25 St. Clair Avenue East  
Toronto, Ontario  
M4T 1M4  
Local calls: (416) 973-6586  
Toll free: 1-800-263-1136  
Fax: 1-416-973-7475

### **Manitoba**

Advisory Services  
Statistics Canada  
MacDonald Building  
Suite 300  
344 Edmonton Street  
Winnipeg, Manitoba  
R3B 3L9  
Local calls: (204) 983-4020  
Toll free: 1-800-542-3404  
Fax: 1-204-983-7543

### **Saskatchewan**

Advisory Services  
Statistics Canada  
Avord Tower, 9<sup>th</sup> Floor  
2002 Victoria Avenue  
Regina, Saskatchewan  
S4P 0R7  
Local calls: (306) 780-5405  
Toll free: 1-800-667-7164  
Fax: 1-306-780-5403

### **Alberta and the Northwest Territories**

Advisory Services  
Statistics Canada  
8<sup>th</sup> Floor, Park Square  
10001 Bellamy Hill  
Edmonton, Alberta  
T5J 3B6  
Local calls: (403) 495-3027  
Toll free: 1-800-282-3907  
N.W.T. – Call collect (403) 495-3028  
Fax: 1-403-495-5318

### **Southern Alberta**

Advisory Services  
Statistics Canada  
First Street Plaza, Room 401  
138-4<sup>th</sup> Avenue Southeast  
Calgary, Alberta  
T2G 4Z6  
Local calls: (403) 292-6717  
Toll free: 1-800-472-9708  
Fax: 1-403-292-4958

### **British Columbia and the Yukon**

Advisory Services  
Statistics Canada  
Sinclair Centre, Suite 440F  
757 West Hastings Street  
Vancouver, B.C. V6C 3C9  
Local calls: (604) 666-3691  
Toll free (except Atlin, B.C.):  
1-800-663-1551  
Yukon and Atlin, B.C.: Zenith 08913  
Fax: 1-604-666-4863

### **Telecommunications Device for the Hearing Impaired**

Toll free: 1-800-363-7629