



The Daily

Statistics Canada

Wednesday, March 31, 1993

For release at 8:30 a.m.

NOT FOR LOAN
NE S'EMPRUNTE PAS

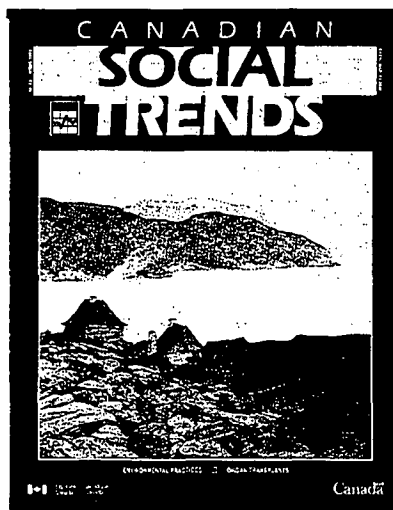


Years of Ans
Excellence d'excellence

MAJOR RELEASES

- **Real Gross Domestic Product at Factor Cost by Industry, January 1993** 3
Gross Domestic Product at Factor Cost advanced 0.2% in January following a gain of 0.4% in December, its largest two-month increase since May 1991.
- **Unemployment Insurance Statistics, January 1993** 6
In January, the number of beneficiaries receiving regular benefits (adjusted for seasonal variations) decreased 1.0% to 1.1 million.

(continued on page 2)



Canadian Social Trends Spring 1993

The Spring 1993 edition of *Canadian Social Trends*, released today, features two articles relating to women ("Women in the Workplace" and "Alimony and Child Support") and two articles relating to health ("Organ Donation and Transplantation" and "Trends in Low Birth Weight"). Other articles in this issue are "Unemployment Insurance in Canada," "Environmental Practices of Canadian Households" and "Emotional Support and Family Contacts of Older Canadians."

Each quarter, *Canadian Social Trends* integrates data from various sources to examine important social trends and issues. It also features the latest social indicators, as well as information about new Statistics Canada products and services.

The Spring 1993 edition of *Canadian Social Trends* (11-008E, \$8.50/\$34) is now available. See "How to Order Publications." For further information about this release, contact Cynthia Silver (613-951-2556), Canadian Social Trends, Housing, Family and Social Statistics Division.

STATISTICS STATISTIQUE
CANADA CANADA

MAR 30 1993

LIBRARY
BIBLIOTHEQUE

Canada



Statistics
Canada

Statistique
Canada

DATA AVAILABILITY ANNOUNCEMENTS

Geographic Data, 1991	8
Process Cheese and Instant Skim Milk Powder, February 1993	9
Railway Carloadings, February 1993	9
Gypsum Products, February 1993	9

PUBLICATIONS RELEASED

10

REGIONAL REFERENCE CENTRES

11

MAJOR RELEASE DATES: April 1993

12

MAJOR RELEASES

Real Gross Domestic Product at Factor Cost by Industry

January 1993
(seasonally adjusted data)

Monthly Overview

Gross Domestic Product at Factor Cost advanced 0.2% in January following a gain of 0.4% in December, its largest two-month increase since May 1991. Substantial gains in retail trade and in residential construction may indicate an increased willingness by consumers to spend. The gain was not limited to these sectors, however, as 11 of 15 major industries recorded higher production. Goods producers boosted output 0.6%, a third consecutive monthly increase. Output of services edged up 0.1%, restrained by declines in finance, insurance and real estate, and community, business, and personal services.

Goods-producing Industries

Six of the seven major goods-producing industries recorded higher output, but the advance was concentrated in construction and manufacturing, which accounted for 65% of the overall gain. Forestry, utilities and agriculture also recorded higher production. Mining output edged up 0.1% following three monthly declines, but fishing declined.

Construction jumped 1.7% following a 0.5% gain in December, its first two consecutive increases since October 1991. Residential construction surged 7.5% after smaller gains in November and December. A decline of 3.9% in non-residential construction partly offset this gain, while engineering construction edged ahead 0.5%.

Manufacturers produced 0.2% more in January than in December, the fourth consecutive month of higher production. Producers of durables have led the increase in recent months and this trend continued into January, when output of primary metals, transportation equipment, and fabricated metal products increased substantially. Higher output of refined petroleum products, beverages, wood, and tobacco products also contributed to the strength. Declines in electrical products, non-metallic mineral products, food, and pulp and paper moderated the gain.

Production of primary metals continued to improve, increasing 3.0% in January. Since last July

output has jumped 18.4%, led by substantial increases in iron and steel, and pipe and tube. In January, smelters and refiners accounted for most of the dollar gain, advancing 5.7%. Output of iron and steel rose 2.2%, its sixth consecutive monthly increase.

Output of transportation equipment rose 1.3%, its fourth consecutive gain. Production of motor vehicle parts increased 2.7%, while motor vehicles rose 2.1%. Several plants re-opened in January after extended shutdowns. Output of aircraft dropped 2.1% to the lowest level since September 1988.

Production of fabricated metal products advanced 3.0% as widespread gains were led by metal stamping.

Sharp declines in output of electronic equipment, miscellaneous electrical products, and office machinery led a 4.0% decline in production of electrical products. Exports of telecommunications equipment and office machinery fell 9.4% in January.

Production of non-metallic mineral products dropped 3.8% after remaining almost unchanged the previous four months. Permanent plant closures curbed cement production by 15.0%.

Output of paper and allied products slipped 1.0% to a level 3.5% lower than its most recent peak in October 1992. Lower production of pulp, as well as newsprint, was responsible for the decline and reflected lower domestic consumption of woodpulp and lower shipments abroad of newsprint.

Elsewhere in manufacturing, petroleum refineries and manufacturers of beverages, wood, and tobacco products recorded moderate dollar gains; but food production decreased 0.9%, led by declines in fish processing and miscellaneous food products.

A three-month slide in mining output was arrested by the re-opening of several mines that led a 17.0% jump in coal production. The increase was restrained, however, by a further cutback in natural gas production as exports continued to decline. Output of crude petroleum fell slightly as imports jumped 40.7%.

Services-producing Industries

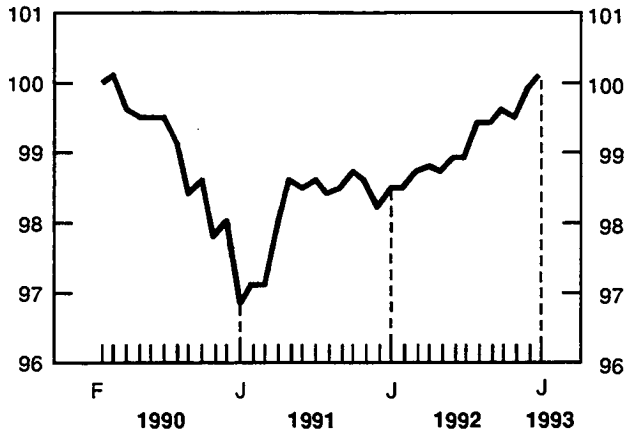
Retail trade and communications accounted for most of the dollar gain in services. Wholesale trade also contributed to the advance but losses in finance, insurance and real estate, transportation and storage, and in community, business and personal services offset most of the gains.

Gross Domestic Product

Seasonally adjusted at 1986 prices

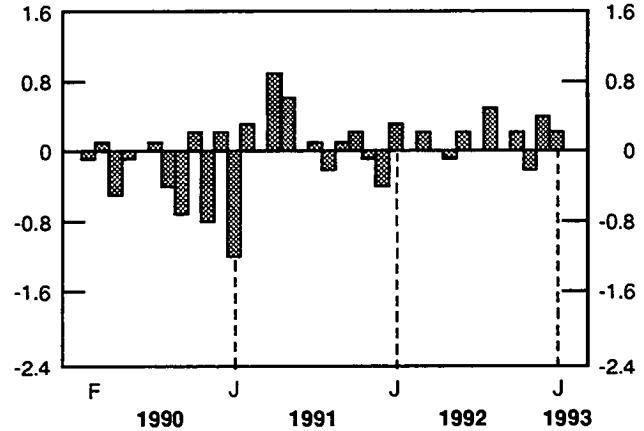
Total Economy

Index (February 1990 = 100)



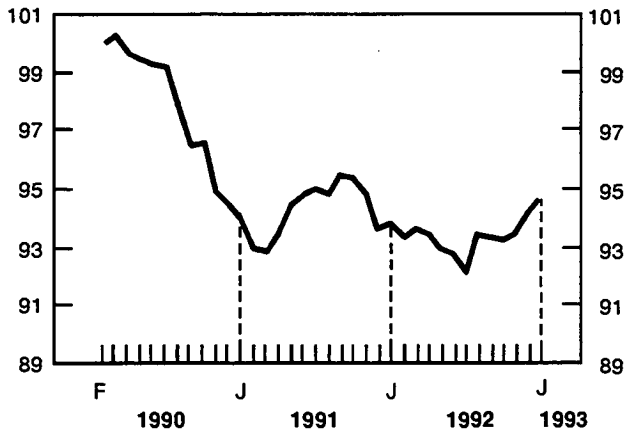
Total Economy

% change



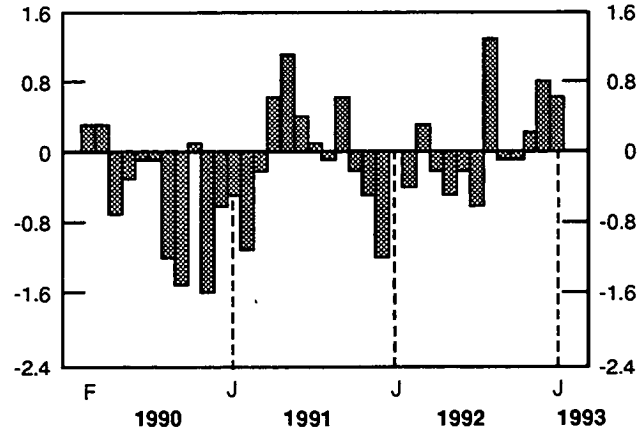
Goods

Index (February 1990 = 100)



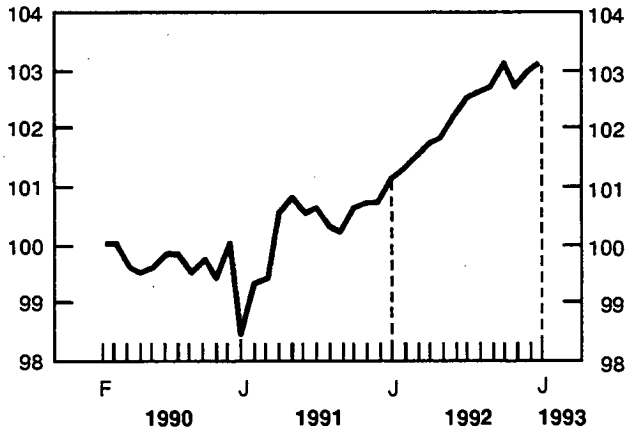
Goods

% change



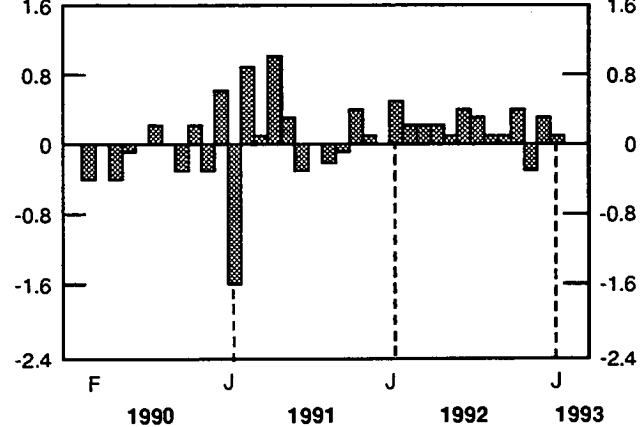
Services

Index (February 1990 = 100)



Services

% change



Retail trade rose 1.5%, its largest increase since November 1991. Fourteen of 18 trade groups recorded higher sales. Supermarkets, general merchandise stores and drug stores increased their sales the most. Motor vehicle dealers posted lower sales for a second consecutive month.

Communications output advanced 1.0% led by a 1.4% increase in the output of telecommunications carriers. The gain was partly offset by a drop of 1.1% in broadcasting activities.

Wholesale trade advanced a further 0.4% following four consecutive monthly increases. Wholesalers of machinery and equipment, grain, and miscellaneous products recorded the largest gains. The gain was restrained by lower sales by wholesalers of petroleum products and agricultural machinery.

Finance, insurance and real estate fell 0.4% in January, declining 1.6% since its most recent peak in October. Lower activity by real estate agents and mutual funds was responsible for the weakness in January. Both have been declining for several

months. The losses were partly offset by an increase in activity by security brokers.

Transportation and storage services fell 0.7% as lower throughput of natural gas led a 4.5% drop in pipeline output. Gas transmission has been weakening since last August, when exports peaked 12.1% above their current level.

Led by a 1.2% decline in business services, output of community, business and personal services slipped 0.2%. The loss was partly offset by a 4.4% gain in amusement services. Accommodation and food services also contributed to the weakness.

Available on CANSIM: matrices 4671-4674.

The January 1993 issue of *Gross Domestic Product by Industry* (15-001, \$12.70/\$127) is scheduled for release in April.

For further information, contact Michel Girard (613-951-9145), Industry Measures and Analysis Division.

Real Gross Domestic Product at Factor Cost by Industry, at 1986 Prices by Month (Seasonally Adjusted at Annual Rates)

	1992				1993
	January	October	November	December	January
	(\$ millions)				
Total Economy	499,242.5	504,913.0	504,061.1	506,216.4	507,422.3
Business Sector:	407,101.7	412,231.7	411,130.4	413,163.2	414,315.9
Goods:	165,378.9	164,554.9	164,881.4	166,136.5	167,125.6
Agriculture	11,030.9	10,298.1	10,106.0	10,308.2	10,405.9
Fishing and Trapping	919.1	872.4	861.6	863.9	853.5
Logging Industry	2,485.4	2,580.0	2,719.5	2,758.0	2,897.7
Mining Industries	19,701.0	20,354.4	20,055.5	19,923.9	19,942.0
Manufacturing Industries	83,993.9	86,377.4	87,125.1	88,314.1	88,477.6
Construction Industries	31,192.7	27,660.8	27,455.7	27,592.7	28,072.2
Other Utility Industries	16,055.9	16,411.8	16,558.0	16,375.7	16,476.7
Services:	241,722.8	247,676.8	246,249.0	247,026.7	247,190.3
Transportation and Storage	21,735.8	21,876.0	21,674.0	21,784.9	21,632.9
Communication Industries	19,270.9	19,518.6	19,477.8	19,526.8	19,722.4
Wholesale Trade	28,665.6	30,094.2	30,128.1	30,193.9	30,316.7
Retail Trade	29,928.3	30,467.6	30,521.7	30,403.5	30,849.6
Finance, Insurance and Real Estate	82,242.4	84,910.4	83,691.5	83,847.3	83,510.7
Community, Business and Personal Services	59,879.8	60,810.0	60,755.9	61,270.3	61,158.0
Non-business Sector:	92,140.8	92,681.3	92,930.7	93,053.2	93,106.4
Goods:	921.1	930.8	917.5	928.4	924.7
Services:	91,219.7	91,750.5	92,013.2	92,124.8	92,181.7
Government Service Industry	34,130.6	34,313.4	34,383.0	34,406.9	34,409.9
Community and Personal Services	53,641.8	53,959.2	54,110.4	54,182.4	54,222.2
Other Services	3,447.3	3,477.9	3,519.8	3,535.5	3,549.6
Other Aggregations:					
Goods-producing Industries	166,300.0	165,485.7	165,798.9	167,064.9	168,050.3
Services-producing Industries	332,942.5	339,427.3	338,262.2	339,151.5	339,372.0
Industrial Production	120,671.9	124,074.4	124,656.1	125,542.1	125,821.0
Non-durable Manufacturing	39,253.8	40,092.4	39,739.7	39,857.5	39,847.5
Durable Manufacturing	44,740.1	46,285.0	47,385.4	48,456.6	48,630.1

Unemployment Insurance Statistics

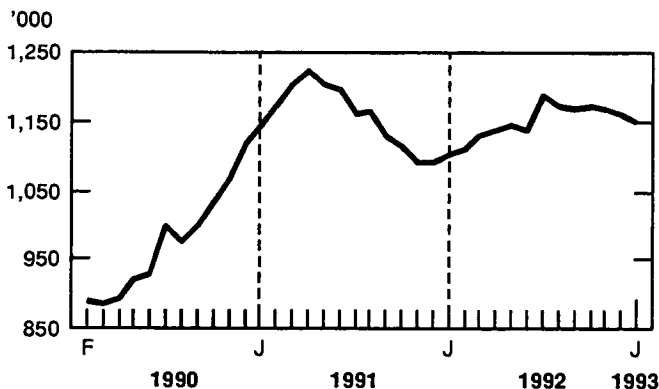
January 1993

Seasonally Adjusted Data

- For the week ended January 16, 1993, the number of beneficiaries¹ who received regular unemployment insurance benefits was estimated at 1,148,000, down 1.0% from December.
- Between December 1992 and January 1993, the number of beneficiaries who received regular benefits decreased 2.5% in Ontario, 1.7% in Saskatchewan, 1.5% in Manitoba, 1.4% in Nova Scotia, 1.2% in Quebec and 1.0% in Prince Edward Island. Increases were observed in the Yukon (14.5%), British Columbia (1.9%) and the Northwest Territories (1.4%). The other provinces had changes of less than 1.0%.

Beneficiaries Receiving Regular Unemployment Insurance Benefits, Canada

Seasonally adjusted



Data Not Adjusted for Seasonal Variation

- In January 1993, the estimated number of beneficiaries¹ (including all persons qualifying for regular and special unemployment insurance benefits) was 1,543,000, down 0.9% from January 1992. Over the same 12-month period, the number of male beneficiaries decreased 1.5% to 917,000, while the number of female beneficiaries remained virtually unchanged at 625,000.

- In the following census metropolitan areas the year-over-year percentage change in the number of beneficiaries was equal to or exceeded $\pm 10\%$:

	Beneficiaries January 1993	% Change January 1993/1992
Oshawa	10,640	23
Calgary	33,220	12
Regina	6,400	11
Quebec	40,280	10
Thunder Bay	6,520	10
Kitchener	13,170	-15

- In January 1993, disbursements of unemployment insurance benefits^{2,3} were \$1.8 billion, down 10.4% from January 1992. (Part of the decrease occurred because fewer days were available to process claims in January 1993 than in January 1992.) Year-over-year, the average weekly payment increased 2.6% to \$264.30, but the number of benefit weeks decreased 12.4% to 6.8 million.

- A total of 355,000 claims² (applications) for unemployment insurance benefits were received in January 1993, a decrease of 23.1% from January 1992.

Available on CANSIM: matrices 26 (series 1.6), 5700-5717, 5735-5736.

The January 1993 issue of *Unemployment Insurance Statistics* (73-001, \$14.70/\$147) will contain data for November 1992, December 1992, and January 1993, and will be available in April. See "How to Order Publications".

For more information, please call Carole Lacroix (613-951-4039) or André Picard (613-951-4045), Labour Division (fax: 613-951-4087).

¹ The number of beneficiaries is a count of persons who qualified for unemployment insurance benefits during a specific week of the reference month.

² Benefit payments, number of benefit weeks, and number of claims received relate to a complete calendar month and are usually final estimates when released. These estimates are affected by the number of working days available during the reference month to process claims and to pay benefits. If short-term comparisons are made, it is not uncommon to observe different trends between these data and the number of beneficiaries.

³ The unemployment insurance disbursements shown include monies paid to schools and colleges to train beneficiaries (starting in February 1991) and funds made available to claimants as self-employment assistance (since June 1992). □

Unemployment Insurance Statistics

Seasonally adjusted data	January 1993	December 1992	November 1992	January 1992	% change January 1993/ December 1992
Regular Benefits					
Beneficiaries (000)	1,148 ^P	1,160 ^P	1,167 ^r	1,102	-1.0
Amount paid (\$000)	1,277,965	1,297,528	1,323,408	1,240,578	-1.5
Weeks of benefits (000)	5,030	5,055	5,155	4,992	-0.5
Unadjusted data	January 1993	December 1992	November 1992	January 1992	% change January 1993/ January 1992
Beneficiaries (000) – All	1,543 ^P	1,400 ^P	1,279 ^r	1,556	-0.9
Beneficiaries (000) – Regular	1,316 ^P	1,166 ^P	1,060 ^r	1,292	1.9
Claims received (000)	355	388	393	461	-23.1
Amount paid (\$000)	1,834,837	1,642,919	1,440,072	2,047,639	-10.4
Weeks of benefits (000)	6,833	6,049	5,353	7,797	-12.4
Average weekly benefit (\$)	264.30	260.33	256.53	257.59	2.6

^P Preliminary figures.

^r Revised figures.

"All beneficiaries" includes all claimants who receive regular benefits (e.g., because of lay-off or a voluntary quit) or special benefits (e.g., in case of sickness).

DATA AVAILABILITY ANNOUNCEMENTS

Geographic Data

1991

Four products from Geography Division – the 1991 Street Index, the 1991 Block-face Data File, the 1991 Place Name Master File and the 1991 Geographic Attribute File – are now available.

1991 Street Index

The Street Index is an alphabetical listing of street and address ranges from the Street Network Files, linked to specific standard geographic areas. (Street Network Files are computer files containing digitized streets and related features such as bridges, railway tracks, etc.).

Three products are now available: (1) street and address linkage to enumeration areas; (2) street and address linkage to census divisions and census subdivisions; and (3) street and address linkage to census tracts. These listings show street name, type, odd and even address ranges, abbreviated municipality name, and the code for the geographic area requested.

The Street Index listings are available as print-on-demand products for all 25 census metropolitan areas and for the 19 census agglomerations that have a corresponding Street Network File.

1991 Block-face Data File

The information in this file uses the smallest geographical unit available from Statistics Canada, namely the block-face in urban centres covered by Street Network Files. (A block-face is one side of a city street between two consecutive intersections.) This file contains 1991 Census population and dwelling counts for block-faces. It also links the block-face to all higher levels of geography (enumeration areas and above) through geographical codes. The block-face representative point (centroid) coordinates and address ranges are also provided.

The Block-face Data File is available in ASCII or EBCDIC formats (on 1600 or 6250 BPI tape or on 3½ inch diskette) for all 25 census metropolitan areas and for the 19 census agglomerations that have a corresponding Street Network File (44 centres).

1991 Place Name Master File

The Place Name Master File contains the master list of place names with 1991 Standard Geographical Classification codes and, where known, their enumeration area codes. The file includes the place names published in the Standard Geographical Classification as well as names of unincorporated places encountered by census representatives during the 1991 Census. (Unincorporated places refers to a cluster of five or more permanently occupied dwellings in a rural area.) The population counts of all unincorporated places where a population was reported in the 1991 Census, as well as census subdivisions, are also included.

The Place Name Master File is available in ASCII format on 3½ inch diskette for all of Canada (\$500) or for three regions (\$250 each); the three regional files are for the Atlantic provinces, Quebec and Ontario, and the Western provinces and territories.

1991 Geographic Attribute File

The Geographic Attribute File assigns to each 1991 Census enumeration area (the basic geographical unit of census data collection) all higher geographic levels by codes and names. It also locates each enumeration area representative point according to Universal Transverse Mercator (UTM) coordinates and Lambert coordinates, as well as by longitude and latitude. The 1991 population and private occupied dwelling counts for all enumeration areas are also presented. The same information is available with software in GEOREF.

The Geography Attribute File is available in ASCII or EBCDIC formats (on 1600 or 6250 BPI tape or on 3½ inch diskette) for all of Canada (\$500) or by four regions (\$250 each); the four regional files are for the Atlantic provinces, Quebec, Ontario, and the Western provinces and territories.

For more information about any of these products or to place an order, please contact your nearest Statistics Canada Regional Reference Centre. ■

Process Cheese and Instant Skim Milk Powder

February 1993

Production of process cheese in February 1993 totalled 6 480 617 kilograms, an increase of 38.2% from January 1993 and an increase of 13.7% from February 1992. For January and February 1993, year-to-date production totalled 11 170 201 kilograms, compared to the year-earlier 10 056 123 kilograms.

Production of instant skim milk powder during February totalled 383 263 kilograms, a decrease of 2.3% from January 1993 and a decrease of 1.2% from February 1992. For January and February 1993, year-to-date production totalled 775 504 kilograms, compared to 724 609 kilograms for the corresponding period in 1992.

Available on CANSIM: matrix 188 (series 1.10).

The February 1993 issue of *Production and Inventories of Process Cheese and Instant Skim Milk Powder* (32-024, \$5/\$50) will be available at a later date. See "How to Order Publications".

For more detailed information on this release, contact Peter Zylstra (613-951-3511), Industry Division. ■

Railway Carloadings

February 1993

Revenue freight loaded by railways in Canada totalled 17.6 million tonnes in February 1993, a decrease of 9.4% from February 1992. The carriers received an additional 1.0 million tonnes from United States connections during February.

Total loadings for the January to February 1993 period decreased 12.7% from the year-earlier period. Receipts from United States connections increased 6.6% during the same period.

All 1992 figures and 1993 cumulative data have been revised.

Available on CANSIM: matrix 1431.

The February 1993 issue of *Railway Carloadings* (52-001, \$8.30/\$83) will be released the fourth week of April.

For seasonally adjusted data on revenue freight loadings, contact Angus MacLean (613-951-2484), Transportation Division. ■

Gypsum Products

February 1993

Manufacturers shipped 19 114 thousand square metres of plain gypsum wallboard in February 1993, up 19.6% from the 15 979 thousand square metres shipped in February 1992 and up 41.9% from the 13 466 thousand square metres shipped in January 1993.

For January and February 1993, year-to-date shipments totalled 32 580 thousand square metres, a decrease of 1.0% from the year-earlier period.

Available on CANSIM: matrices 39 and 122 (series 11).

The February 1993 issue of *Gypsum Products* (44-003, \$5/\$50) will be available at a later date.

For more detailed information on this release, please contact Roland Joubert (613-951-3527), Industry Division. ■

PUBLICATIONS RELEASED

Canadian Social Trends, Spring 1993.

Catalogue number 11-008E

(Canada: \$8.50/\$34; United States: US\$10/US\$40;
Other Countries: US\$12/US\$48).

**Crude Petroleum and Natural Gas Production,
December 1992.**

Catalogue number 26-006

(Canada: \$10/\$100; United States: US\$12/US\$120;
Other Countries: US\$14/US\$140).

Electric Power Statistics, January 1993.

Catalogue number 57-001

(Canada: \$10/\$100; United States: US\$12/US\$120;
Other Countries: US\$14/US\$140).

Traveller Accommodation Statistics, 1988-1990.

Catalogue number 63-204

(Canada: \$22; United States: US\$26; Other
Countries: US\$31).

**Summary of Canadian International Trade,
December 1992.**

Catalogue number 65-001

(Canada: \$18.20/\$182; United States:
US\$21.80/US\$218; Other Countries:
US\$25.50/US\$255).

The paper used in this publication meets the minimum
requirements of American National Standard for
Information Sciences - Permanence of Paper for Printed
Library Materials, ANSI Z39.48 - 1984.



How to Order Publications

Simplify your search for data with the Statistics Canada Catalogue 1993. Using the keyword index, you'll find sources for statistics on all areas of Canadian social and economic activity. For easy access to over 900 Statistics Canada products and services, order the Statistics Canada Catalogue 1993 (11-204E, \$13.95; United States: US\$17; Other Countries: US\$20).

You may order Statistics Canada products and services by telephone. From Canada and the United States, call toll-free 1-800-267-6677. From all other locations, call 613-951-7277 (not toll-free).

You may purchase Statistics Canada publications by writing to Publication Sales, Room 1710, Main Building, Statistics Canada, Ottawa K1A 0T6.

Please enclose a cheque or money order payable to the Receiver General for Canada/Publications. Provide full information on each publication order (catalogue number, title, issue). Canadian customers, please add 7% GST.

Publications may also be ordered from Statistics Canada's Regional Reference Centres in St. John's, Halifax, Montreal, Ottawa, Toronto, Winnipeg, Regina, Edmonton, Calgary and Vancouver, or from authorized bookstore agents or other booksellers.

The Daily Statistics Canada	
Wednesday, September 23, 1992 Price: \$2.00 (incl. GST)	
MAJOR RELEASES	
Real Gross Domestic Product at Factor Cost by Industry, July 1992 (Gross Domestic Product at factor cost was unchanged in July following a 0.1% gain in June)	2
Unemployment Insurance Statistics, July 1992 (The number of beneficiaries reporting regular unemployment insurance benefits, adjusted for seasonal variations, increased 0.4% in July to 1.2 million)	6
Building Permits, July 1992 (The preliminary value of building permits issued in Canada declined 6.9% to \$2,149 million in July, down from \$2,301 million in June)	7
Registered Drivings - Canada, 1991 (From 1981 to 1991, the number of persons charged with registered driving in Canada decreased 31%, from 162,048 to 111,267)	10
DATA AVAILABILITY ANNOUNCEMENTS	
Real Housing Starts, August 1992	12
AgriScan Results, August 1992	12
PUBLICATIONS RELEASED	
	13
MAJOR RELEASE DATES: OCTOBER 1992	
	14

Statistics Canada's Official Release Bulletin for Statistical Information

Catalogue 11-001E. Price: Canada: \$120.00 annually; United States: US\$144.00 annually;
Other Countries: US\$168.00 annually

Published by the Communications Division
Statistics Canada, 10-N, R.H. Coats Bldg., Tunney's Pasture, Ottawa, Ontario K1A 0T6.

Senior Editor: Greg Thomson (613-951-1187)
Editor: Tim Prichard (613-951-1103)

Published by authority of the Minister responsible for Statistics Canada. © Minister of Industry, Science and Technology, 1993. All rights reserved. No part of this publication may be reproduced, stored in a retrieval system or transmitted in any form or by any means, electronic, mechanical, photocopying, recording or otherwise without prior written permission from Licence Services, Marketing Division, Statistics Canada, Ottawa, Ontario, Canada K1A 0T6.

REGIONAL REFERENCE CENTRES

Statistics Canada's Regional Reference Centres provide a full range of the agency's products and services. Each reference centre is equipped with a library and a sales counter where users can consult or purchase publications, microcomputer and CD-ROM diskettes, microfiche, maps and more.

Each centre has facilities to retrieve information from CANSIM and E-STAT, Statistics Canada's computerized data retrieval systems. A telephone inquiry service is available with toll-free access for clients who are located outside local calling areas. Many other valuable services – from seminars to consultations – are also offered. Call or write your nearest Statistics Canada Regional Reference Centre for more information.

Newfoundland and Labrador

Advisory Services
Statistics Canada
3rd Floor
Viking Building
Crosbie Road
St. John's, Newfoundland
A1B 3P2
Local calls: (709) 772-4073
Fax: 1-709-772-6433

Maritime Provinces

Advisory Services
Statistics Canada
North American Life Centre
1770 Market Street
Halifax, Nova Scotia
B3J 3M3
Local calls: (902) 426-5331
Toll free: 1-800-565-7192
Fax: 1-902-426-9538

Quebec

Advisory Services
Statistics Canada
Suite 412, East Tower
Guy Favreau Complex
200 René Lévesque Blvd. W.
Montreal, Quebec
H2Z 1X4
Local calls: (514) 283-5725
Toll free: 1-800-361-2831
Fax: 1-514-283-9350

National Capital Region

Advisory Services
Statistical Reference Centre (NCR)
Statistics Canada
R.H. Coats Building Lobby
Holland Avenue
Tunney's Pasture
Ottawa, Ontario
K1A 0T6
Local calls: (613) 951-8116
If outside the local calling area, please dial
the toll free number for your province.
Fax: 1-613-951-0581

Ontario

Advisory Services
Statistics Canada
10th Floor
Arthur Meighen Building
25 St. Clair Avenue East
Toronto, Ontario
M4T 1M4
Local calls: (416) 973-6586
Toll free: 1-800-263-1136
Fax: 1-416-973-7475

Manitoba

Advisory Services
Statistics Canada
MacDonald Building
Suite 300
344 Edmonton Street
Winnipeg, Manitoba
R3B 3L9
Local calls: (204) 983-4020
Toll free: 1-800-563-7828
Fax: 1-204-983-7543

Saskatchewan

Advisory Services
Statistics Canada
Avord Tower, 9th Floor
2002 Victoria Avenue
Regina, Saskatchewan
S4P 0R7
Local calls: (306) 780-5405
Toll free: 1-800-563-7828
Fax: 1-306-780-5403

Alberta and the Northwest Territories

Advisory Services
Statistics Canada
8th Floor, Park Square
10001 Bellamy Hill
Edmonton, Alberta
T5J 3B6
Local calls: (403) 495-3027
Toll free: 1-800-563-7828
N.W.T. – Call collect (403) 495-3028
Fax: 1-403-495-5318

Southern Alberta

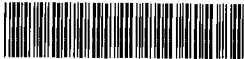
Advisory Services
Statistics Canada
First Street Plaza, Room 401
138-4th Avenue Southeast
Calgary, Alberta
T2G 4Z6
Local calls: (403) 292-4181
Toll free: 1-800-563-7828
Fax: 1-403-292-4958

British Columbia and the Yukon

Advisory Services
Statistics Canada
Sinclair Centre, Suite 440F
757 West Hastings Street
Vancouver, B.C. V6C 3C9
Local calls: (604) 666-3691
Toll free (except Atlin, B.C.):
1-800-663-1551
Yukon and Atlin, B.C.: Zenith 08913
Fax: 1-604-666-4863

Telecommunications Device for the Hearing Impaired

Toll free: 1-800-363-7629



MAJOR RELEASE DATES: April 1993

(Release dates are subject to change)

Anticipated date(s) of release	Title	Reference period
April		
6	Estimates of Labour Income	January 1993
6	Short-term Expectations Survey	
7	Help-wanted Index	March 1993
8	Labour Force Survey	March 1993
8	Travel Between Canada and Other Countries	February 1993
8	New Motor Vehicle Sales	February 1993
13	Census of Population: Income	1991
14	New Housing Price Index	February 1993
14	Farm Product Price Index	February 1993
14	Department Store Sales by Province and Metropolitan Area	February 1993
15	Canadian Composite Leading Indicator	March 1993
16	Preliminary Statement of Canadian International Merchandise Trade	February 1993
19	Department Store Sales - Advance Release	March 1993
19	Monthly Survey of Manufacturing	February 1993
19	Sales of Natural Gas	February 1993
20	Building Permits	February 1993
21	Consumer Price Index	March 1993
22	Retail Trade	February 1993
22	Canada's International Transactions in Securities	February 1993
23	Wholesale Trade	February 1993
27	Census of Population: Social Characteristics	1991
28	Industrial Product Price Index	March 1993
28	Raw Materials Price Index	March 1993
28	Unemployment Insurance Statistics	February 1993
29	Employment, Earnings and Hours	February 1993
29	Field Crop Reporting Series: No. 2, March Seeding Intentions	
30	Sales of Refined Petroleum Products	February 1993
30	Real Gross Domestic Product at Factor Cost by Industry	February 1993
30	Major Release Dates	May 1993

The May 1993 release schedule will be published on April 30, 1993. **User note:** This schedule can be retrieved from **CANSIM** by the command **DATES**. Contact Greg Thomson (613-951-1187), Communications Division.