



# The Daily

Statistics Canada

Thursday, April 29, 1993

For release at 8:30 a.m.

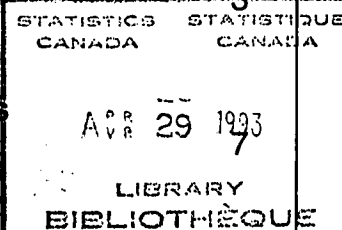
NOT FOR LOAN  
NE S'EMPRUNTE PAS



Years of Ans  
Excellence d'excellence

## MAJOR RELEASES

- Employment, Earnings and Hours, February 1993**  
 On a year-over-year basis, average weekly earnings at \$557.13 rose 2.5% from February 1992, the lowest increase since the survey began in 1983.
- Field Crop Reporting Series - No. 2: March Seeding Intentions of Principal Field Crop Area, Canada, 1993**  
 In 1993, Canadian farmers intend to seed over 63.8 million acres of the eight major grains, 672 thousand more acres (+1%) than was seeded in 1992/93 but little changed from the five-year average for the 1988 to 1992 period.



(continued on page 2)

### Wage Rates for Hired Agricultural Labour 1992

A new Statistics Canada survey, funded by Agriculture Canada, provides information for the first time on the level and movement of wage rates paid to hired farm labour. The data being released today refer to average annual wage rates for 1992.

The survey collects data from farm operators each quarter, beginning in November 1992. The first measures of the change in wage rates will be available in December 1993.

#### Highlights

- Wage rates for hired agricultural workers are lower on average than wage rates in the other sectors of the economy. The average wage rate for hired agricultural labour in 1992 was \$8.09 per hour, compared with the industrial aggregate average of \$12.00 for hourly paid employees in firms with fewer than 200 employees.
- Among the provinces, wage rates for hired agricultural labour were highest in British Columbia (\$8.62) and lowest in Quebec and Saskatchewan (\$7.61).
- Different types of work earned different wage rates. Supervisors earned the highest average wage rate (\$10.98), whereas fruit and vegetable labour earned the lowest (\$7.04).

Available on CANSIM: matrix 160.

For additional information about the results of this survey, contact Rick Burroughs (613-951-2890, fax 613-951-1680), Agriculture Division.



Statistics  
Canada

Statistique  
Canada

Canada

---

## MAJOR RELEASES – Concluded

---

- **Crude Oil and Natural Gas, January 1993** 9  
Exports of natural gas to the United States, at 5.5 billion cubic metres, rose 22.0% from January 1992. Imports of crude oil increased 14.7% from January 1992 to 2.9 million cubic metres.
- 

## DATA AVAILABILITY ANNOUNCEMENTS

---

Steel Primary Forms, Week Ending April 24, 1993	10
Profile of Enumeration Areas within Federal Electoral Districts, 1991 Census Area Profile Series	10
Apparent Per Capita Consumption of Red Meat, 1992	10
Forestry Services Industry, 1991 Annual Survey of Forestry	10

---

## PUBLICATION RELEASED 11

---

## REGIONAL REFERENCE CENTRES 12

---

## MAJOR RELEASES

### Employment, Earnings and Hours

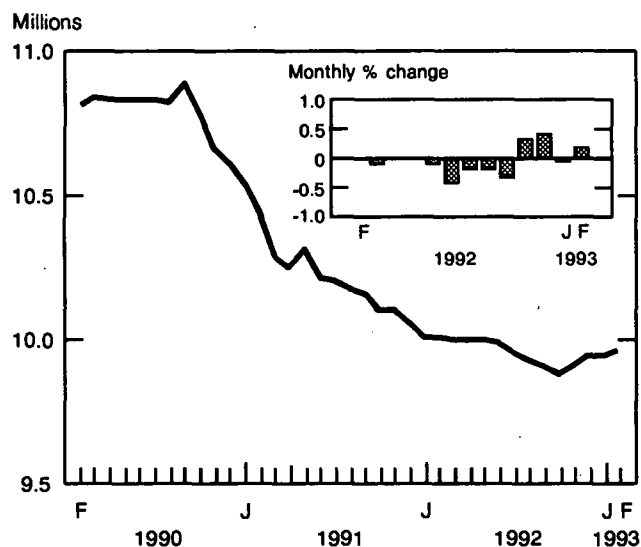
February 1993

#### Highlights

#### Seasonally Adjusted Data

- Industrial aggregate<sup>1</sup> payroll employment in February was estimated at 9,956,000, up 0.2% from January.

#### SEPH Employment, Seasonally Adjusted, Industrial Aggregate, Canada, February 1993

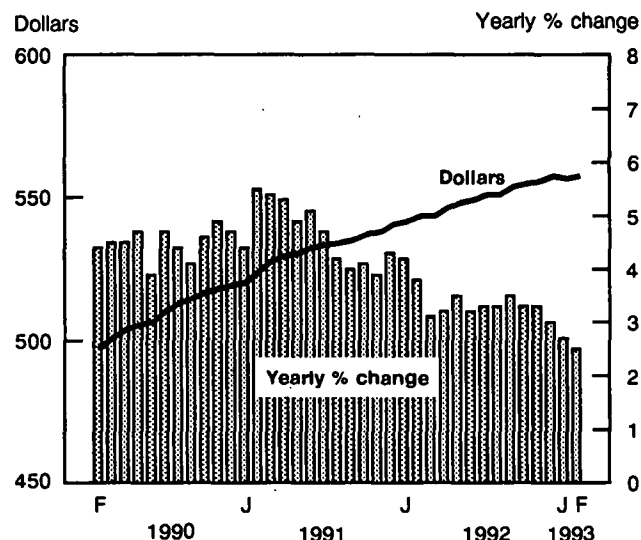


- Small increases were recorded in all industries except education and related services and miscellaneous services.
- Manufacturing employment rose in each of the last four months.
- Provincially, employment increased slightly in Quebec, Ontario, Alberta and British Columbia. In British Columbia, employment advanced 0.2% in February, continuing modest increases observed since July 1992.
- Seasonally adjusted average weekly earnings<sup>2</sup> stood at \$557.13 in February. Monthly increases

in earnings have generally been decelerating since the last quarter of 1992.

- On a year-over-year basis, average weekly earnings rose 2.5% from February 1992, the lowest increase since the survey began in 1983. Ontario, Quebec, Alberta and New Brunswick recorded year-over-year average weekly earnings growth that exceeded the national average.

#### SEPH Average Weekly Earnings, Seasonally Adjusted, Industrial Aggregate, Canada, February 1993



- Average weekly hours for the industrial aggregate advanced 0.2% following a decline of 0.3% in January. The monthly growth in average weekly hours for the service-producing industries exceeded that for the goods-producing industries.
- Construction, trade, finance, insurance and real estate, and the health and social services industries posted monthly increases in average weekly hours that exceeded the growth of the industrial aggregate.

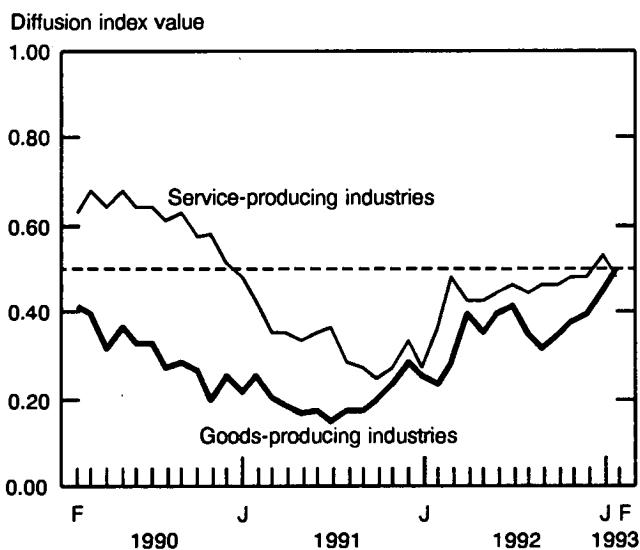
<sup>1</sup> The industrial aggregate is the sum of all industries except agriculture, fishing and trapping, religious organizations, private households and military personnel.

<sup>2</sup> Not adjusted for inflation.

## Unadjusted Data

- Industrial aggregate payroll employment was 9,723,000 in February, a slight year-over-year decline (-0.4%). Despite the decrease, the trend in employment has been positive over the past five months. The diffusion index was 0.49, indicating that 105 of the 214 industries recorded employment gains.

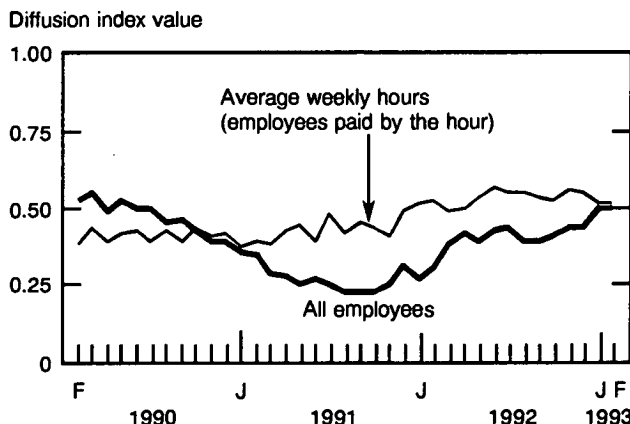
### Diffusion Index of Employment, All Employees Canada, February 1993



- Led by accommodation, food and beverage services and the finance and insurance industries, the service-producing industries recorded their second consecutive month of year-over-year increase in payroll employment. This increase was spread across nearly half of the industries. The employment diffusion index for service-producing industries stood at 0.48.
- Year-over-year, business services employment increased for the first time since October 1990.
- Year-over-year changes in employment for firms with less than 200 employees continued to be stronger than for firms with 200 or more employees.

- Average weekly hours in durable goods manufacturing have posted 18 consecutive months of year-over-year increases.

### Diffusion Index, Industrial Aggregate, Canada, February 1993



- The fixed-weighted average hourly earnings index for hourly paid employees rose 2.7% from February 1992. The variable-weighted average hourly earnings index for hourly-paid employees recorded a smaller increase of 2.2% for the same period. This was the fourth consecutive month of lower growth in the variable-weighted earnings index, indicating a shift in the employment mix towards lower-paying industries. (The fixed-weighted series compensates for compositional shifts in the employment mix between industries, provinces and territories, and salaried and hourly employees.)

Available on CANSIM: matrices 4285-4466, 9438-9452 and 9639-9911.

Data are available from *Employment, Earnings and Hours* (72-002, \$28.50/\$285) and by special tabulation.

For further information on this release or on the program, products and services, contact Mike Mackinnon (613-951-4090, fax: 613-951-4087), Labour Division. □

# Employment, Earnings and Hours

Seasonally adjusted estimates and change from previous month, Canada  
February 1993

Industry Group - Canada (1980 S.I.C.)	Number of employees			Average weekly earnings *		
	February 1993P	January 1993 r	December 1992	February 1993P	January 1993 r	December 1992
	Thousands			Dollars		
<b>Industrial aggregate</b>	<b>9,956</b> <b>19</b>	<b>9,937</b> <b>-4</b>	<b>9,941</b> <b>42</b>	<b>557.13</b> <b>0.62</b>	<b>556.51</b> <b>-0.67</b>	<b>557.18</b> <b>1.24</b>
<b>Goods-producing Industries</b>	<b>2,301</b> <b>9</b>	<b>2,292</b> <b>-6</b>	<b>2,298</b> <b>-2</b>	<b>693.17</b> <b>0.95</b>	<b>692.22</b> <b>-1.19</b>	<b>693.41</b> <b>4.70</b>
Logging and forestry	59	58	57	702.90	695.48	697.77
Mining, quarrying and oil wells	1	1	2	7.42	-2.29	-20.84
Manufacturing	122	121	123	955.31	949.66	953.10
Construction	1	-2	-1	5.65	-3.44	8.52
	1,590	1,585	1,582	666.33	665.33	666.37
	5	3	8	1.00	-1.04	4.92
	394	393	389	641.60	640.18	635.68
	1	4	-24	1.42	4.50	-0.66
<b>Service-producing Industries</b>	<b>7,648</b> <b>10</b>	<b>7,638</b> <b>13</b>	<b>7,625</b> <b>34</b>	<b>516.31</b> <b>0.69</b>	<b>515.62</b> <b>-0.63</b>	<b>516.25</b> <b>0.42</b>
Transportation, communication and other utilities	816	815	818	709.51	707.82	707.07
Wholesale trade	1	-3	8	1.69	0.75	-4.42
Retail trade	571	568	574	594.98	594.45	594.30
	3	-6	2	0.53	0.15	0.06
Finance, insurance and real estate	1,303	1,293	1,282	329.00	326.09	326.75
	10	11	-3	2.91	-0.66	0.38
Business services	660	661	658	615.15	616.23	613.92
	-1	3	7	-1.08	2.31	2.33
Education-related services	492	482	490	573.43	577.97	583.63
	10	-8	-2	-4.54	-5.66	-2.67
Health and social services	922	928	927	670.27	667.82	667.68
	-6	1	4	2.45	0.14	-0.48
Accommodation, food and beverage services	1,122	1,117	1,120	498.59	497.67	498.50
	5	-3	-6	0.92	-0.83	3.52
Miscellaneous services	690	687	679	216.78	216.87	217.73
	3	8	22	-0.09	-0.86	0.78
Public administration	491	497	501	373.48	370.56	371.32
	-6	-4	10	2.92	-0.76	0.28
	716	717	716	737.02	737.34	731.80
	-1	1	-2	-0.32	5.54	2.34
<b>Industrial aggregate - Provinces and Territories</b>						
Newfoundland	136	137	137	516.06	513.06	519.28
	-1	0	0	3.00	-6.22	4.67
Prince Edward Island	40	39	39	453.71	450.98	453.38
	1	0	0	2.73	-2.40	2.77
Nova Scotia	284	284	283	491.16	492.82	487.69
	0	1	5	-1.66	5.13	-2.34
New Brunswick	226	226	224	501.90	501.38	502.15
	0	2	0	0.52	-0.77	-0.85
Quebec	2,406	2,402	2,380	540.98	542.76	546.91
	4	22	0	-1.78	-4.15	1.86
Ontario	3,956	3,950	3,972	587.19	587.41	585.59
	6	-22	-8	-0.22	1.82	1.00
Manitoba	381	381	374	492.02	491.51	495.49
	0	7	1	0.51	-3.98	1.99
Saskatchewan	298	297	296	471.76	471.02	473.74
	1	1	1	0.74	-2.72	3.56
Alberta	962	959	965	559.63	553.81	554.29
	3	-6	-1	5.82	-0.48	2.29
British Columbia	1,234	1,231	1,221	558.67	551.81	553.89
	3	10	17	6.86	-2.08	0.91
Yukon	11	12	12	683.68	693.95	671.71
	-1	0	0	-10.27	22.24	-21.08
Northwest Territories	21	20	20	714.70	712.77	707.64
	1	0	0	1.93	5.13	1.64

P Preliminary estimates.

r Revised estimates.

\* For all employees.

# Employment, Earnings and Hours

Unadjusted Data

February 1993

Industry Group - Canada 1980 S.I.C.	February 1993 <sup>P</sup>	January 1993 <sup>r</sup>	December 1992	February 1993/1992	January 1993/1992	December 1992/1991
	Thousands			Year-over-year % Change		
<b>Employment, All Employees</b>						
Industrial Aggregate	9,723	9,688	9,773	-0.4	-0.7	-1.3
Goods-producing	2,166	2,158	2,197	-2.3	-3.2	-3.9
Manufacturing	1,543	1,533	1,542	-0.8	-1.8	-2.9
Service-producing	7,557	7,530	7,576	0.1	0.0	-0.5
	Dollars			Year-over-year % Change		
<b>Average Weekly Earnings, All Employees</b>						
Industrial Aggregate	554.73	555.49	555.56	2.4	2.5	3.1
Goods-producing	699.20	697.37	686.05	2.1	2.3	2.8
Manufacturing	670.86	668.73	662.58	2.6	3.1	3.8
Service-producing	513.32	514.83	517.72	2.7	2.9	3.5
	Hours			Year-over-year % Change		
<b>Average Weekly Hours, Hourly Employees</b>						
Industrial Aggregate	29.9	29.9	30.2	-0.4	-0.7	-0.3
Goods-producing	37.9	37.9	37.2	0.0	-0.2	0.5
Manufacturing	38.2	38.2	37.8	0.3	0.3	1.6
Service-producing	26.6	26.7	27.3	-0.5	-0.7	-0.5
	February 1993 <sup>P</sup>	January 1993 <sup>r</sup>	December 1992			
<b>Diffusion Index of Employment, All Employees</b>						
Industrial Aggregate	0.49	0.49	0.43			
Goods-producing	0.50	0.45	0.39			
Manufacturing	0.51	0.45	0.37			
Service-producing	0.48	0.53	0.48			
<b>Diffusion Index of Average Weekly Hours, Hourly Employees</b>						
Industrial Aggregate	0.51	0.51	0.54			
Goods-producing	0.50	0.53	0.62			
Manufacturing	0.52	0.54	0.67			
Service-producing	0.53	0.49	0.46			
	February 1993 <sup>P</sup>	January 1993 <sup>r</sup>	December 1992	Year-over-year % Change		
<b>Fixed-weighted Average Weekly Earnings, All Employees</b>						
Industrial Aggregate	2.4	2.6	2.8			
Goods-producing	1.4	1.8	2.1			
Manufacturing	1.7	2.3	3.0			
Service-producing	2.9	2.9	3.1			
<b>Variable-weighted Average Weekly Earnings*, All Employees</b>						
Industrial Aggregate	2.1	2.3	2.8			
Goods-producing	1.2	1.7	2.0			
Manufacturing	1.5	2.3	2.9			
Service-producing	2.7	2.8	3.4			

<sup>P</sup> Preliminary estimate.

<sup>r</sup> Revised estimate.

\* Excluding overtime.

## Field Crop Reporting Series – No. 2: March Intentions of Principal Field Crop Area, Canada

1993

### Highlights

#### Canada

The intended area of the eight major grains in 1993 is over 63.8 million acres. Producers plan to seed 672 thousand more acres (+ 1%) of the eight major grains in this crop-year than was seeded in 1992-93. The five-year average from 1988 to 1992 for the seeded area of the eight major grains is 63.3 million acres.

#### Western Canada

Western producers plan to shift large areas out of wheat and into other crops. March 31 intentions are to seed almost 3.4 million fewer acres (-11.9%) to hard red spring wheat in 1993 than was seeded in the previous year. Producers' main intentions are to seed canola, with the planned area at a record 9.3 million acres, up by 18% from last year's seeded area. Intended areas of flax and barley are also up from last year's seeded area, but only to traditional area levels. Producers intend to seed 1.3 million acres of flax and almost 10.3 million acres of barley, increases of 74% and 13%, respectively, from last year's seeded area.

#### Specialty Crops

Producers in Western Canada intend to seed more area in specialty crops in 1993 than in 1992. This intention to increase the area of specialty crops is partly caused by a perceived need to diversify

#### Note to Users: Change in Reference Date

*The 1993 Seeding Intentions Survey was conducted a month later than in previous years. The seeding intentions estimates released today represent producers' seeding plans as of March 31, 1993. These intentions are not forecasts of the actual areas that will be seeded in the spring of 1993, and should not be interpreted as such.*

operations. According to seeding intentions, dry peas is the most popular specialty crop, with an intended area of almost 1.2 million acres – an increase of over 75% from last year's seeded area. Producers also plan to seed a larger area of lentils – up 18% from last year. The intended area of canary seed is at a record 365,000 acres. Producers also plan to seed larger areas of sunflower and mustard seed.

#### Summerfallow

Producers plan to reduce summerfallow area in 1993. At just over 18 million acres, this intended summerfallow area is 1.2% less than last year's level.

#### Eastern Canada

In Eastern Canada, producers plan to seed a slightly larger area to corn for grain than was seeded last year, up 2% to almost 2.6 million acres. The intended area for soybeans in 1993 is also up, with plans to seed over 1.7 million acres or 10% more than was seeded in 1992.

*Field Crop Reporting Series No. 2: March Intentions of Principal Field Crop Area, Canada (22-002, \$12/\$80) is now available. See "How to Order Publications".*

For further information, please contact the Crops Section (613-951-3862), Agriculture Division. □

**Intended Areas of Principal Field Crops and Summerfallow compared with 1992 Seeded Areas, Canada**  
March 1, 1993

Crop	Seeded Area <sup>1</sup>	Intended area	Area as a percentage of 1992	Seeded Area <sup>1</sup>	Intended area
	1992	1993		1992	1993
	'000 hectares		%	'000 acres	
<b>Canada</b>					
Winter wheat	336.5	262.5	78.0	831.7	648.7
Spring wheat	12 532.3	11 454.4	91.4	30,968.5	28,304.1
Durum wheat	1 511.5	1426.6	94.4	3,735.0	3,525.0
All wheat	14 380.3	13 143.5	91.4	35,535.2	32,477.8
Oats	1 663.4	1 776.9	106.8	4,110.3	4,390.7
Barley	4 086.7	4 581.8	112.1	10,098.3	11,321.9
Fall rye <sup>2</sup>	163.8	199.6	121.9	404.6	493.2
Spring rye	34.4	30.4	88.4	85.0	75.0
All rye	198.2	230.0	116.0	489.6	568.2
Flaxseed	297.4	518.0	174.2	735.0	1,280.0
Canola	3 195.0	3 771.6	118.0	7,895.0	9,320.0
Corn for grain	1 081.3	1 088.1	100.6	2,672.1	2,688.7
Buckwheat	24.6	13.4	54.5	60.9	33.1
Soybeans	643.6	708.8	110.1	1,590.5	1,751.5
Dry peas	273.1	481.6	176.3	675.0	1,190.0
Lentils	279.2	329.8	118.1	690.0	815.0
Mustard seed	119.4	147.7	123.7	295.0	365.0
Sunflower seed	74.4	93.1	125.1	184.0	230.0
Canary seed	94.3	147.7	156.6	233.0	365.0
Fodder Corn	205.8	156.7	76.1	508.5	387.4
Tame hay	5 509.9	6 896.0	125.2	15,789.8	17,040.2
Summerfallow	7 377.4	7 288.4	98.8	18,230.0	18,010.0

<sup>1</sup> Fall-seeded crops; seeded in the fall of preceding year.

<sup>2</sup> Includes small areas of spring rye except in Saskatchewan and Alberta.



## Crude Oil and Natural Gas

January 1993

### Highlights

- Preliminary estimates indicate that production of crude oil and equivalent hydrocarbons in January amounted to 8.5 million cubic metres, a decrease of 0.6% from January 1992.
- Imports of crude oil increased 14.7% from January 1992 to 2.9 million cubic metres.
- Exports of crude oil decreased 1.1% from January 1992 to 4.2 million cubic metres.

- Marketable production of natural gas, at 10.8 billion cubic metres, posted an 8.3% gain over January 1992.

- Exports of natural gas, at 5.5 billion cubic metres, rose 22.0% over January 1992.

Available on CANSIM: matrices 530-547.

The January 1993 issue of *Crude Petroleum and Natural Gas Production* (26-006, \$10/\$100) will be available during the first week of May. See "How to Order Publications".

For more detailed information on this release, contact Gerard O'Connor (613-951-3562), Energy Section, Industry Division.

### Crude Oil and Natural Gas

	January 1993	% Change from January 1992
(m <sup>3</sup> thousands)		
<b>Crude oil and equivalent<sup>1</sup></b>		
Production	8 491.8	-0.6
Exports	4 161.9	-1.1
Imports	2 892.1	14.7
Refinery receipts	7 528.5	7.6
(m <sup>3</sup> millions)		
<b>Natural Gas<sup>2</sup></b>		
Marketable production	10 784.5	8.3
Exports	5 464.4	22.0
Canadian sales	7 352.7	8.0

<sup>1</sup> Disposition may differ from production due to inventory change, industry own use, etc.

<sup>2</sup> Disposition may differ from production due to inventory change, usage as pipeline fuel, pipeline losses, line-pack fluctuations, etc.

---

## DATA AVAILABILITY ANNOUNCEMENTS

---

### Steel Primary Forms

Week Ending April 24, 1993

Preliminary estimates indicate that Canadian steel primary forms production for the week ending April 24, 1993 totalled 297 504 tonnes, a 0.09% increase from 297 237 tonnes the week before and up 8.8% from 273 363 tonnes the year before. The cumulative total at April 24, 1993 was 4 480 933 tonnes, a 3.0% increase from 4 351 302 tonnes for the same period in 1992.

For more detailed information on this release, contact Greg Milsom (613-951-9827), Industry Division. ■

### Profile of Enumeration Areas within Federal Electoral Districts

1991 Census Area Profile Series

*Profile of Enumeration Areas within Federal Electoral Districts* is now available on magnetic tape. This product is based on data collected from the 1991 Census of Canada. The profile shows population counts by age, sex, marital status and mother tongue; dwelling counts by type and tenure; households by size; and families by size, structure and presence of never-married sons and daughters.

The product consists of a single table displaying data for each geographic area. The data have been grouped into blocks by universe, such as population, dwellings, households and families. Population is first shown by age and sex, then by marital status, and then by mother tongue. A user can select one or more of these characteristics and geographic areas.

Reference maps showing enumeration areas are published separately.

To obtain a copy of *Profile of Enumeration Areas within Federal Electoral Districts* (A9105), contact your nearest Statistics Canada Regional Office. ■

### Apparent Per Capita Consumption of Red Meat

1992

Apparent per capita consumption estimates for red meat have been revised to reflect data collected from the 1991 Census of Agriculture. Beef consumption has been trending downward. Pork consumption dropped in 1990 and 1991 but is back to late-1980 levels. Consumption levels of mutton, lamb, veal and offal have remained relatively stable over the same period.

Available on CANSIM: matrices 1175-1179 and 1183.

For more information on this release, contact Bernie Rosien (613-951-8716), Agriculture Division. ■

### Forestry Services Industry

1991 Annual Survey of Forestry

In 1991, the value of shipments of goods of own manufacture for the business sector of the forestry services industry (SIC 0511) totalled \$208.4 million, down 0.1% from \$208.7 million in 1990.

For more detailed information on this release, contact J. Lepage (613-951-3516), Industry Division. ■

## PUBLICATION RELEASED

**Field Crop Reporting Series No. 2: March Intentions of Principal Field Crop Area, Canada. Catalogue number 22-002**  
(Canada: \$12/\$80; United States: US\$14/US\$96; Other Countries: US\$16/US\$112).

The paper used in this publication meets the minimum requirements of American National Standard for Information Sciences - Permanence of Paper for Printed Library Materials, ANSI Z39.48 - 1984.



### How to Order Publications

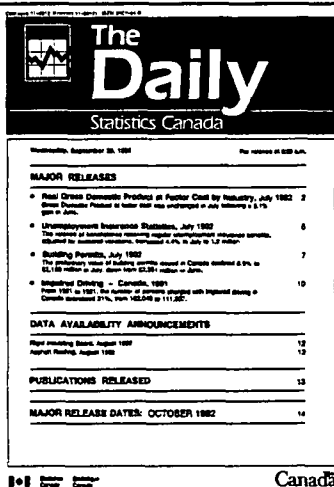
*Simplify your search for data with the Statistics Canada Catalogue 1993. Using the keyword index, you'll find sources for statistics on all areas of Canadian social and economic activity. For easy access to over 900 Statistics Canada products and services, order the Statistics Canada Catalogue 1993 (11-204E, \$13.95; United States: US\$17; Other Countries: US\$20).*

*You may order Statistics Canada products and services by telephone. From Canada and the United States, call toll-free 1-800-267-6677. From all other locations, call 613-951-7277 (not toll-free).*

*You may purchase Statistics Canada publications by writing to Publication Sales, Room 1710, Main Building, Statistics Canada, Ottawa K1A 0T6.*

*Please enclose a cheque or money order payable to the Receiver General for Canada/Publications. Provide full information on each publication order (catalogue number, title, issue). Canadian customers, please add 7% GST.*

*Publications may also be ordered from Statistics Canada's Regional Reference Centres in St. John's, Halifax, Montreal, Ottawa, Toronto, Winnipeg, Regina, Edmonton, Calgary and Vancouver, or from authorized bookstore agents or other booksellers.*



### Statistics Canada's Official Release Bulletin for Statistical Information

Catalogue 11-001E. Price: Canada: \$120.00 annually; United States: US\$144.00 annually; Other Countries: US\$168.00 annually

Published by the Communications Division  
Statistics Canada, 10-N, R.H. Coats Bldg., Tunney's Pasture, Ottawa, Ontario K1A 0T6.

Senior Editor: Greg Thomson (613-951-1187)  
Editor: Tim Prichard (613-951-1103)

Published by authority of the Minister responsible for Statistics Canada. • Minister of Industry, Science and Technology, 1993. All rights reserved. No part of this publication may be reproduced, stored in a retrieval system or transmitted in any form or by any means, electronic, mechanical, photocopying, recording or otherwise without prior written permission from Licence Services, Marketing Division, Statistics Canada, Ottawa, Ontario, Canada K1A 0T6.



1010140250

The Daily, April 29, 1993

---

## REGIONAL REFERENCE CENTRES

---

Statistics Canada's Regional Reference Centres provide a full range of the agency's products and services. Each reference centre is equipped with a library and a sales counter where users can consult or purchase publications, microcomputer and CD-ROM diskettes, microfiche, maps and more.

Each centre has facilities to retrieve information from CANSIM and E-STAT, Statistics Canada's computerized data retrieval systems. A telephone inquiry service is available with toll-free access for clients who are located outside local calling areas. Many other valuable services – from seminars to consultations – are also offered. Call or write your nearest Statistics Canada Regional Reference Centre for more information.

### **Newfoundland and Labrador**

Advisory Services  
Statistics Canada  
3rd Floor  
Viking Building  
Crosbie Road  
St. John's, Newfoundland  
A1B 3P2  
Toll free: 1-800-565-7192  
Fax: 1-709-772-6433

### **Maritime Provinces**

Advisory Services  
Statistics Canada  
North American Life Centre  
1770 Market Street  
Halifax, Nova Scotia  
B3J 3M3  
Local calls: (902) 426-5331  
Toll free: 1-800-565-7192  
Fax: 1-902-426-9538

### **Quebec**

Advisory Services  
Statistics Canada  
Suite 412, East Tower  
Guy Favreau Complex  
200 René Lévesque Blvd. W.  
Montreal, Quebec  
H2Z 1X4  
Local calls: (514) 283-5725  
Toll free: 1-800-361-2831  
Fax: 1-514-283-9350

### **National Capital Region**

Advisory Services  
Statistical Reference Centre (NCR)  
Statistics Canada  
R.H. Coats Building Lobby  
Holland Avenue  
Tunney's Pasture  
Ottawa, Ontario  
K1A 0T6  
Local calls: (613) 951-8116  
If outside the local calling area, please dial  
the toll free number for your province.  
Fax: 1-613-951-0581

### **Ontario**

Advisory Services  
Statistics Canada  
10th Floor  
Arthur Meighen Building  
25 St. Clair Avenue East  
Toronto, Ontario  
M4T 1M4  
Local calls: (416) 973-6586  
Toll free: 1-800-263-1136  
Fax: 1-416-973-7475

### **Manitoba**

Advisory Services  
Statistics Canada  
MacDonald Building  
Suite 300  
344 Edmonton Street  
Winnipeg, Manitoba  
R3B 3L9  
Local calls: (204) 983-4020  
Toll free: 1-800-563-7828  
Fax: 1-204-983-7543

### **Saskatchewan**

Advisory Services  
Statistics Canada  
Avord Tower, 9th Floor  
2002 Victoria Avenue  
Regina, Saskatchewan  
S4P 0R7  
Local calls: (306) 780-5405  
Toll free: 1-800-563-7828  
Fax: 1-306-780-5403

### **Alberta and the Northwest Territories**

Advisory Services  
Statistics Canada  
8th Floor, Park Square  
10001 Bellamy Hill  
Edmonton, Alberta  
T5J 3B6  
Local calls: (403) 495-3027  
Toll free: 1-800-563-7828  
Fax: 1-403-495-5318

### **Southern Alberta**

Advisory Services  
Statistics Canada  
First Street Plaza, Room 401  
138-4th Avenue Southeast  
Calgary, Alberta  
T2G 4Z6  
Local calls: (403) 292-4181  
Toll free: 1-800-563-7828  
Fax: 1-403-292-4958

### **British Columbia and the Yukon**

Advisory Services  
Statistics Canada  
Sinclair Centre, Suite 440F  
757 West Hastings Street  
Vancouver, B.C. V6C 3C9  
Local calls: (604) 666-3691  
Toll free: 1-800-663-1551  
Fax: 1-604-666-4863

### **Telecommunications Device for the Hearing Impaired**

Toll free: 1-800-363-7629