



# The Daily

Statistics Canada

Tuesday, April 6, 1993  
For release at 8:30 a.m.

STATISTICS CANADA  
STATISTIQUE CANADA

APR 6 1993

NOT FOR LOAN  
NE S'EMPRUNTE PAS



## MAJOR RELEASES

- **Estimates of Labour Income, January 1993** 2  
The year-to-year increase in labour income decelerated slightly, from 2.8% in December 1992 to 2.5% in January 1993, due to slower growth in supplementary labour income.
- **Short-term Expectations Survey** 4  
A new series of forecasts from a small group of economists is released today.

## DATA AVAILABILITY ANNOUNCEMENTS

GEOREF (Electronic Product), 1991 Census	6
Sugar Sales, March 1993	6
Pulpwood and Wood Residue Statistics, February 1993	6
Particleboard, Waferboard and Fibreboard, February 1993	7
Electric Storage Batteries, February 1993	7

## PUBLICATIONS RELEASED 8

## REGIONAL REFERENCE CENTRES 9



Statistics  
Canada

Statistique  
Canada

Canada

---

## MAJOR RELEASES

---

### Estimates of Labour Income

January 1993

#### Highlights

The January 1993 preliminary estimate of labour income<sup>1</sup> was \$31.9 billion, an increase of 2.5% from January 1992. This growth was slightly less than the 2.8% attained in December 1992 because supplementary labour income rose by 3.6% in January 1993 compared with 6.8% in December.

#### Seasonally Adjusted - Wages and Salaries

- The seasonally adjusted estimate of wages and salaries for January 1993 dipped slightly (-0.1%) from December 1992.
- Growth in wages and salaries in January occurred in local administration (+1.6%), construction (+1.2%), finance, insurance and real estate (+1.0%), provincial administration (+0.9%), and in education and related services (+0.7%). These increases were moderated by wage and salary declines in forestry (-4.1%), mines, quarries and oil wells (-2.7%), trade (-0.9%), health and welfare services (-0.8%), transportation, communications and other utilities (-0.7%), commercial and personal services (-0.5%) and manufacturing (-0.4%).
- In January, wages and salaries increased in Nova Scotia (+1.9%), New Brunswick (+0.8%) and Prince Edward Island (+0.5%). Wages and salaries declined in Newfoundland (-1.9%), Alberta (-1.4%), the Yukon, the Northwest Territories and Abroad (-1.1%) and British Columbia (-0.6%). In the remaining provinces, wages and salaries were little changed from December.

#### Unadjusted

- In January, wages and salaries grew by 2.3% from a year earlier. This change was the same as that recorded in December and in November 1992.
- The strongest year-to-year growth rates in wages and salaries were in finance, insurance and real estate (+6.3%), education and related services (+4.0%), health and welfare services (+3.9%), local administration (+3.9%), commercial and personal service (+3.6%), forestry (+3.3%) and federal administration (+3.2%). By contrast, year-to-year declines in wages and salaries were recorded in mines, quarries and oil wells (-8.9%) and construction (-3.3%).
- Wages and salaries in manufacturing rose by 1.3% on a year-to-year basis, following increases of 1.2% in December 1992 and 0.7% in November 1992.
- In Prince Edward Island (+6.1%), British Columbia (+3.9%) and New Brunswick (+3.2%), year-to-year increases in wages and salaries were larger than the national growth rate of 2.3%. This growth was moderated by smaller increases in the remaining provinces and by a decline in Newfoundland (-0.4%).

#### Available on CANSIM: matrices 1791 and 1792.

The January-March 1993 issue of *Estimates of Labour Income* (72-005, \$22.50/\$90) will be available in August. See "How to Order Publications".

For information on the estimates, contact Labour Division (613-951-4058, fax: 613-951-4087). □

---

<sup>1</sup> Labour income is wages and salaries plus supplementary labour income. Wages and salaries account for about 90% of labour income and supplementary labour income accounts for about 10%. Wages and salaries include directors' fees, bonuses, commissions, gratuities, income-in-kind, taxable allowances and retroactive wage payments. Supplementary labour income includes employer contributions to employee welfare, pension, workers' compensation and unemployment insurance plans. Labour income estimates account for about 57% of Gross Domestic Product.

**Wages and Salaries and Supplementary Labour Income**

(millions of dollars)

	January 1993 <sup>p</sup>	December 1992 <sup>r</sup>	November 1992 <sup>f</sup>	January 1992
Unadjusted for Seasonal Variation				
Agriculture, fishing and trapping	128.0	188.3	216.2	127.3
Forestry	195.5	201.0	229.9	189.2
Mines, quarries and oil wells	602.4	607.9	603.3	661.0
Manufacturing industries	4,955.9	5,032.0	5,023.2	4,893.6
Construction industry	1,345.9	1,434.2	1,670.9	1,391.9
Transportation, communications and other utilities	2,802.4	2,820.6	2,826.8	2,758.5
Trade	3,927.3	4,098.1	4,064.6	3,860.9
Finance, insurance and real estate	2,588.6	2,589.6	2,577.1	2,435.1
Commercial and personal services	3,968.6	4,032.5	4,048.8	3,829.3
Education and related services	2,782.2	2,716.6	2,792.3	2,674.6
Health and welfare services	2,609.9	2,631.2	2,667.7	2,512.0
Federal administration and other government offices	977.5	990.9	980.4	947.5
Provincial administration	675.3	677.9	684.4	657.6
Local administration	669.2	678.9	673.7	643.8
<b>Total wages and salaries</b>	<b>28,228.6</b>	<b>28,699.6</b>	<b>29,059.3</b>	<b>27,582.3</b>
Supplementary labour income	3,679.7	3,648.0	3,693.0	3,552.7
<b>Labour Income</b>	<b>31,908.3</b>	<b>32,347.6</b>	<b>32,752.3</b>	<b>31,134.9</b>
Adjusted for Seasonal Variation				
Agriculture, fishing and trapping	225.2	226.1	223.8	232.2
Forestry	217.2	226.6	226.4	211.1
Mines, quarries and oil wells	603.1	619.8	613.6	659.2
Manufacturing industries	5,097.9	5,116.3	5,078.2	5,006.2
Construction industry	1,631.5	1,612.2	1,619.3	1,676.3
Transportation, communications and other utilities	2,870.4	2,889.8	2,846.1	2,808.6
Trade	4,010.5	4,044.9	4,047.2	3,905.6
Finance, insurance and real estate	2,633.3	2,607.3	2,609.4	2,477.2
Commercial and personal services	4,077.2	4,098.4	4,050.3	3,936.1
Education and related services	2,709.8	2,691.4	2,687.9	2,598.4
Health and welfare services	2,650.9	2,673.6	2,685.6	2,535.2
Federal administration and other government offices	1,016.5	1,017.0	1,002.7	984.4
Provincial administration	696.6	690.5	691.4	678.6
Local administration	677.9	667.4	672.4	658.5
<b>Total wages and salaries</b>	<b>29,169.7</b>	<b>29,204.7</b>	<b>29,084.9</b>	<b>28,375.0</b>
Supplementary labour income	3,803.1	3,712.1	3,697.3	3,655.4
<b>Labour Income</b>	<b>32,972.7</b>	<b>32,916.8</b>	<b>32,782.2</b>	<b>32,030.4</b>

<sup>p</sup> Preliminary estimates.<sup>r</sup> Revised estimates.<sup>f</sup> Final estimates.

## Short-term Expectations Survey

The increase in the Consumer Price Index for March is forecast at 2.2%, with minimum and maximum values of 2.0% and 2.6%, respectively. In February, the mean forecast (2.1%) underestimated the outcome (2.3%).

The mean forecast of the unemployment rate for March is 10.8% (minimum 10.4%, maximum 11.1%). For February, the mean forecast (11.1%) overestimated the outcome by 0.3 percentage points.

February merchandise exports are forecast to be \$14.4 billion, with a minimum and maximum of \$13.9 billion and \$14.9 billion, respectively. For January, the mean forecast (\$14.2 billion) underestimated the actual level of \$14.6 billion. The forecast of imports for February is \$12.9 billion, with minimum and maximum values of \$12.5 billion and \$13.3 billion, respectively. For January, a mean forecast of \$13.1 billion overestimated the actual imports by \$0.4 billion.

### Note to Users

*Since April 1990, Statistics Canada has been canvassing a small group of economic analysts (an average of 23 participants), requesting from them a one-month-ahead forecast of key economic indicators.*

*This month, participants were asked to forecast the year-over-year change in the Consumer Price Index and the unemployment rate for March 1993, the level of merchandise exports and imports for February 1993, as well as the month-to-month change in the Gross Domestic Product for February 1993.*

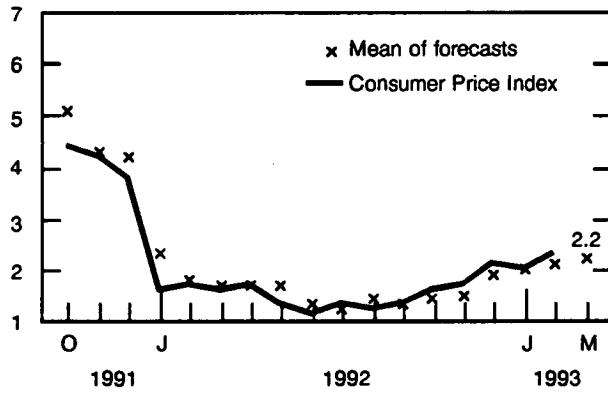
Gross Domestic Product is forecast to have changed by 0.3% between January and February 1993, with minimum and maximum changes of -0.1% and 0.5%. Between December and January 1993, the mean forecast (0.2%) matched the outcome.

For a complete set of tables or more information concerning this survey, contact Diane Lachapelle (613-951-0568). □

## FORECASTS VS. ACTUAL

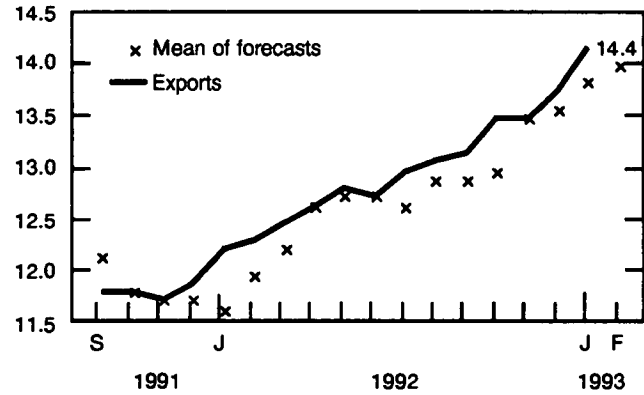
### Consumer Price Index

Year-to-year  
percentage change



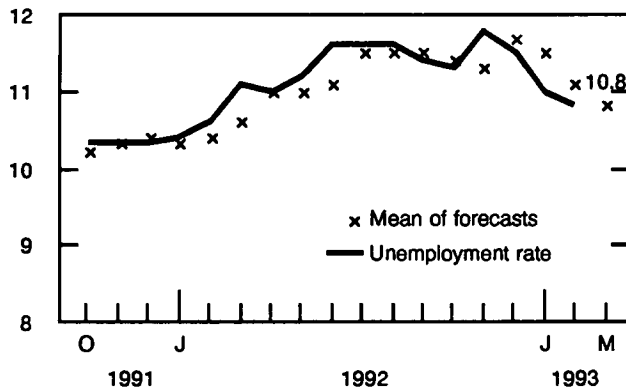
### Canadian International Trade Exports

\$ billions



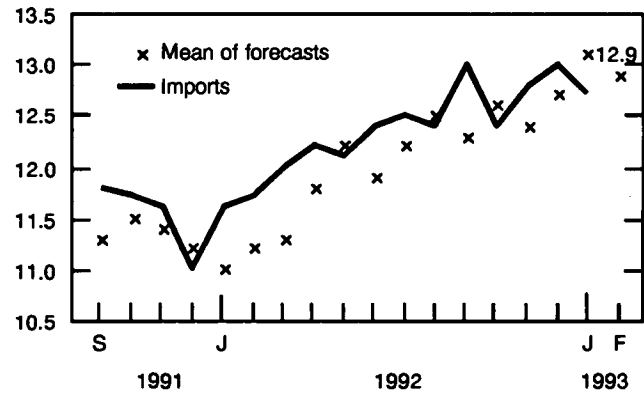
### Unemployment Rate

%



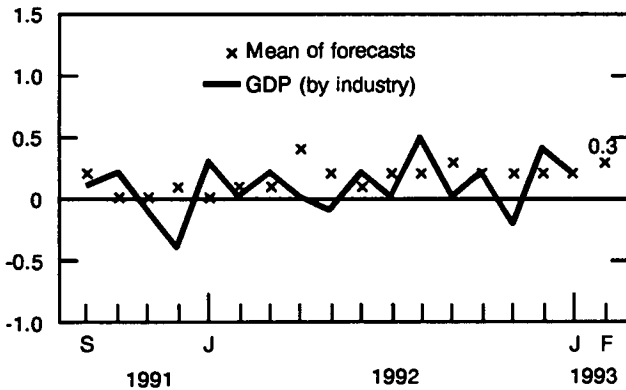
### Canadian International Trade Imports

\$ billions



### Gross Domestic Product (by Industry)

Percentage change



---

## DATA AVAILABILITY ANNOUNCEMENTS

---

### GEOREF (Electronic Product)

1991 Census

GEOREF is now available from the 1991 Census product and service line. This powerful software package allows users to explore selected census data for a range of geographic units. While GEOREF is not a Microsoft Windows application, it operates in a windows-based environment (FOXPRO) that is easy to use.

Selected data can be retrieved for the following geographic areas:

- Provinces and Territories
- Subprovincial Regions (SPRs)
- Census Divisions (CDs)
- Census Consolidated Subdivisions (CCSs)
- Census Subdivisions (CSDs)
- Federal Electoral Districts (FEDs)
- Census Metropolitan Areas (CMAs) and Census Agglomerations (CAs)
- Primary Census Metropolitan Areas (PCMAS) and Primary Census Agglomerations (PCAs)
- Census Tracts (CTs) and Provincial Census Tracts (PCTs)
- Urban Areas (UAs)
- Enumeration Areas (EAs)

Users can explore the links between geographic units and determine the geographic codes, names, population and dwelling counts, and land areas (except FEDs and EAs) that may apply to the units. With GEOREF, users can browse through or make tailored searches of the data or create customized databases for further investigation.

For more information on GEOREF, contact your nearest Statistics Canada Regional Reference Centre. ■

### Sugar Sales

March 1993

Canadian sugar refiners reported total sales of 92 581 tonnes for all types of sugar in March 1993, comprising 82 213 tonnes in domestic sales and 10 368 tonnes in export sales. At the end of March 1993, year-to-date sales for all types of sugar totalled 249 070 tonnes: 214 072 tonnes in domestic sales and 34 998 tonnes in export sales.

This compares to total sales of 85 565 tonnes in March 1992, of which 75 435 tonnes were domestic sales and 10 130 tonnes were export sales. At the end of March 1992, year-to-date sales for all types of sugar totalled 237 205 tonnes: 204 947 tonnes in domestic sales and 32 258 tonnes in export sales.

The March 1993 issue of *The Sugar Situation* (32-013, \$5/\$50) will be available at a later date.

For more detailed information on this release, contact Peter Zylstra (613-951-3511), Industry Division. ■

### Pulpwood and Wood Residue Statistics

February 1993

Pulpwood receipts amounted to 3 797 786 cubic metres in February 1993, a decrease of 6.0% from 4 040 012<sup>r</sup> (revised) cubic metres a year earlier. Receipts of wood residue totalled 5 506 392 cubic metres, up 10.2% from 4 995 830<sup>r</sup> cubic metres in February 1992. Consumption of pulpwood and wood residue totalled 8 315 113 cubic metres in February, a decrease of 1.0% from 8 400 772<sup>r</sup> cubic metres the previous year. The February 1993 closing inventory of pulpwood and wood residue decreased 17.7% to 14 729 403 cubic metres, down from 17 895 485<sup>r</sup> cubic metres a year earlier.

At the end of February 1993, year-to-date receipts of pulpwood totalled 7 374 382<sup>r</sup> cubic metres, a decrease of 4.9% from 7 751 480<sup>r</sup> cubic metres a year earlier. Year-to-date receipts of wood residue increased 12.4% to 10 825 511<sup>r</sup> cubic metres from the year-earlier 9 629 826<sup>r</sup> cubic metres. Year-to-date consumption of pulpwood and wood residue, at 17 344 866<sup>r</sup> cubic metres, was up 1.1% from 17 156 855<sup>r</sup> cubic metres a year earlier.

Available on CANSIM: matrix 54.

The February 1993 issue of *Pulpwood and Wood Residue Statistics* (25-001, \$6.10/\$61) will be available at a later date.

For more detailed information on this release contact Jacques Lepage (613-951-3516), Industry Division. ■

## Particleboard, Waferboard and Fibreboard

February 1993

Canadian firms produced 169 934 cubic metres of waferboard in February 1993, an increase of 13.8% from the 149 365 cubic metres produced in February 1992. Particleboard production reached 102 230 cubic metres, up 22.7% from 83 284 cubic metres the previous year. Production of fibreboard for February 1993 was 7 875 thousand square metres, basis 3.175mm, a decrease of 0.4% from the 7 905 thousand square metres, basis 3.175mm, of fibreboard produced in February 1992.

Cumulative production of waferboard during 1993 totalled 362 507 cubic metres, up 28.1% from the 282 910 cubic metres produced during the previous year. Particleboard production totalled 192 000 cubic metres, up 15.1% from the 166 870 cubic metres produced in January and February 1992. Year-to-date production of fibreboard reached 15 177 thousand square metres, basis 3.175mm, up 3.6% from the 14 649 thousand square metres, basis 3.175mm, for the same period in 1992.

Available on CANSIM: matrices 31 (series 2, 3 and 4) and 122 (series 8 and 34).

The February 1993 issue of *Particleboard, Waferboard and Fibreboard* (36-003, \$5/\$50) will be available at a later date.

For more detailed information on this release, contact Jacques Lepage (613-951-3516), Industry Division. ■

## Electric Storage Batteries


February 1993

Canadian manufacturers of electric storage batteries sold 119,319 automotive and heavy-duty commercial replacement batteries in February 1993.

Information on sales of other types of storage batteries is also available.

The February 1993 issue of *Factory Sales of Electric Storage Batteries* (43-005, \$5/\$50) will be available at a later date.

For more information on this release, contact L. Vincent (613-951-3523), Industry Division. ■



**The Daily**  
Statistics Canada

Wednesday, September 23, 1992      Per volume of \$10.00

**MAJOR RELEASES**

- Real Gross Domestic Product at Factor Cost by Industry, July 1992. 2  
Gross Domestic Product in real and base unchanged in July 1992: + 0.1% gain in July.
- Unemployment Insurance Statistics, July 1992. 6  
The number of unemployment insurance recipients increased 0.4% in July to 1.2 million.
- Spending Patterns, July 1992. 7  
The preliminary index of business services in Canada increased 1.1% to \$2.15 billion in July, down from \$2.20 billion in June.
- Immigrant Settling - Canada, 1991. 10  
From 1971 to 1991, the number of persons settled into immigrant status in Canada increased 37%, from 162,246 to 222,267.

**DATA AVAILABILITY ANNOUNCEMENTS**

- High Housing Stock, August 1992. 12
- Highway Traffic, August 1992. 12

**PUBLICATIONS RELEASED**

- 10

**MAJOR RELEASE DATES: OCTOBER 1992**

- 14

Canada

## Statistics Canada's Official Release Bulletin for Statistical Information

Catalogue 11-001E. Price: Canada: \$120.00 annually; United States: US\$144.00 annually; Other Countries: US\$168.00 annually

Published by the Communications Division  
Statistics Canada, 10-N, R.H. Coats Bldg., Tunney's Pasture, Ottawa, Ontario K1A 0T6.

Senior Editor: Greg Thomson (613-951-1187)  
Editor: Tim Prichard (613-951-1103)

Published by authority of the Minister responsible for Statistics Canada. • Minister of Industry, Science and Technology, 1993. All rights reserved. No part of this publication may be reproduced, stored in a retrieval system or transmitted in any form or by any means, electronic, mechanical, photocopying, recording or otherwise without prior written permission from Licence Services, Marketing Division, Statistics Canada, Ottawa, Ontario, Canada K1A 0T6.

---

## PUBLICATIONS RELEASED

---

**Production and Inventories of Process Cheese and Instant Skim Milk Powder, February 1993.**

**Catalogue number 32-024**

(Canada: \$5/\$50; United States: US\$6/US\$60;  
Other Countries: US\$7/US\$70).

**Pack of Processed Carrots, 1992.**

**Catalogue number 32-239**

(Canada: \$13; United States: US\$16; Other  
Countries: US\$18).

**Rigid Insulating Board, February 1993.**

**Catalogue number 36-002**

(Canada: \$5/\$50; United States: US\$6/US\$60;  
Other Countries: US\$7/US\$70).

**Steel Wire and Specified Wire Products,  
February 1993.**

**Catalogue number 41-006**

(Canada: \$5/\$50; United States: US\$6/US\$60;  
Other Countries: US\$7/US\$70).

**Cement, February 1993.**

**Catalogue number 44-001**

(Canada: \$5/\$50; United States: US\$6/US\$60;  
Other Countries: US\$7/US\$70).

**Asphalt Roofing, February 1993.**

**Catalogue number 45-001**

(Canada: \$5/\$50; United States: US\$6/US\$60;  
Other Countries: US\$7/US\$70).

**Industrial Chemicals and Synthetic Resins,  
February 1993.**

**Catalogue number 46-002**

(Canada: \$5.60/\$56; United States: US\$6.70/US\$67;  
Other Countries: US\$7.80/US\$78).

**Building Permits, January 1993.**

**Catalogue number 64-001**

(Canada: \$22.10/\$221;  
United States: US\$26.50/US\$265;  
Other Countries: US\$30.90/US\$309).

**Imports by Commodity, January 1993.**

**Catalogue number 65-007**

(Canada: \$55.10/\$551;  
United States: US\$66.10/US\$661;  
Other Countries: US\$77.10/US\$771).

---

The paper used in this publication meets the minimum  
requirements of American National Standard for  
Information Sciences - Permanence of Paper for Printed  
Library Materials, ANSI Z39.48 - 1984.



---

### How to Order Publications

*Simplify your search for data with the Statistics Canada Catalogue 1993. Using the keyword index, you'll find sources for statistics on all areas of Canadian social and economic activity. For easy access to over 900 Statistics Canada products and services, order the Statistics Canada Catalogue 1993 (11-204E, \$13.95; United States: US\$17; Other Countries: US\$20).*

*You may order Statistics Canada products and services by telephone. From Canada and the United States, call toll-free 1-800-267-6677. From all other locations, call 613-951-7277 (not toll-free).*

*You may purchase Statistics Canada publications by writing to Publication Sales, Room 1710, Main Building, Statistics Canada, Ottawa K1A 0T6.*

*Please enclose a cheque or money order payable to the Receiver General for Canada/Publications. Provide full information on each publication order (catalogue number, title, issue). Canadian customers, please add 7% GST.*

*Publications may also be ordered from Statistics Canada's Regional Reference Centres in St. John's, Halifax, Montreal, Ottawa, Toronto, Winnipeg, Regina, Edmonton, Calgary and Vancouver, or from authorized bookstore agents or other booksellers.*



---

## REGIONAL REFERENCE CENTRES

---

Statistics Canada's Regional Reference Centres provide a full range of the agency's products and services. Each reference centre is equipped with a library and a sales counter where users can consult or purchase publications, microcomputer and CD-ROM diskettes, microfiche, maps and more.

Each centre has facilities to retrieve information from CANSIM and E-STAT, Statistics Canada's computerized data retrieval systems. A telephone inquiry service is available with toll-free access for clients who are located outside local calling areas. Many other valuable services – from seminars to consultations – are also offered. Call or write your nearest Statistics Canada Regional Reference Centre for more information.

### **Newfoundland and Labrador**

Advisory Services  
Statistics Canada  
3rd Floor  
Viking Building  
Crosbie Road  
St. John's, Newfoundland  
A1B 3P2  
Local calls: (709) 772-4073  
Fax: 1-709-772-6433

### **Maritime Provinces**

Advisory Services  
Statistics Canada  
North American Life Centre  
1770 Market Street  
Halifax, Nova Scotia  
B3J 3M3  
Local calls: (902) 426-5331  
Toll free: 1-800-565-7192  
Fax: 1-902-426-9538

### **Quebec**

Advisory Services  
Statistics Canada  
Suite 412, East Tower  
Guy Favreau Complex  
200 René Lévesque Blvd. W.  
Montreal, Quebec  
H2Z 1X4  
Local calls: (514) 283-5725  
Toll free: 1-800-361-2831  
Fax: 1-514-283-9350

### **National Capital Region**

Advisory Services  
Statistical Reference Centre (NCR)  
Statistics Canada  
R.H. Coats Building Lobby  
Holland Avenue  
Tunney's Pasture  
Ottawa, Ontario  
K1A 0T6  
Local calls: (613) 951-8116  
If outside the local calling area, please dial  
the toll free number for your province.  
Fax: 1-613-951-0581

### **Ontario**

Advisory Services  
Statistics Canada  
10th Floor  
Arthur Meighen Building  
25 St. Clair Avenue East  
Toronto, Ontario  
M4T 1M4  
Local calls: (416) 973-6586  
Toll free: 1-800-263-1136  
Fax: 1-416-973-7475

### **Manitoba**

Advisory Services  
Statistics Canada  
MacDonald Building  
Suite 300  
344 Edmonton Street  
Winnipeg, Manitoba  
R3B 3L9  
Local calls: (204) 983-4020  
Toll free: 1-800-563-7828  
Fax: 1-204-983-7543

### **Saskatchewan**

Advisory Services  
Statistics Canada  
Avord Tower, 9th Floor  
2002 Victoria Avenue  
Regina, Saskatchewan  
S4P 0R7  
Local calls: (306) 780-5405  
Toll free: 1-800-563-7828  
Fax: 1-306-780-5403

### **Alberta and the Northwest Territories**

Advisory Services  
Statistics Canada  
8th Floor, Park Square  
10001 Bellamy Hill  
Edmonton, Alberta  
T5J 3B6  
Local calls: (403) 495-3027  
Toll free: 1-800-563-7828  
N.W.T. – Call collect (403) 495-3028  
Fax: 1-403-495-5318

### **Southern Alberta**

Advisory Services  
Statistics Canada  
First Street Plaza, Room 401  
138-4th Avenue Southeast  
Calgary, Alberta  
T2G 4Z6  
Local calls: (403) 292-4181  
Toll free: 1-800-563-7828  
Fax: 1-403-292-4958

### **British Columbia and the Yukon**

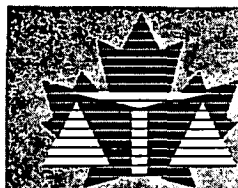
Advisory Services  
Statistics Canada  
Sinclair Centre, Suite 440F  
757 West Hastings Street  
Vancouver, B.C. V6C 3C9  
Local calls: (604) 666-3691  
Toll free (except Atlin, B.C.):  
1-800-663-1551  
Yukon and Atlin, B.C.: Zenith 08913  
Fax: 1-604-666-4863

### **Telecommunications Device for the Hearing Impaired**

Toll free: 1-800-363-7629



1010138888



# JURISTAT

## Your Comprehensive Source Of Justice Information

We are often confused by stories about escalating crime rates, high costs of administering our justice system and many more alarming messages. To get the whole picture, you need a comprehensive source – **JURISTAT**.

Published by the **Canadian Centre for Justice Statistics (CCJS)**, the **JURISTAT** bulletin is written to help you understand the various subjects and issues relevant to Canada's justice system, such as:

- **Adult Correctional Services**
- **Policing services**
- **Adult Courts and Legal Aid**
- **Youth Justice**

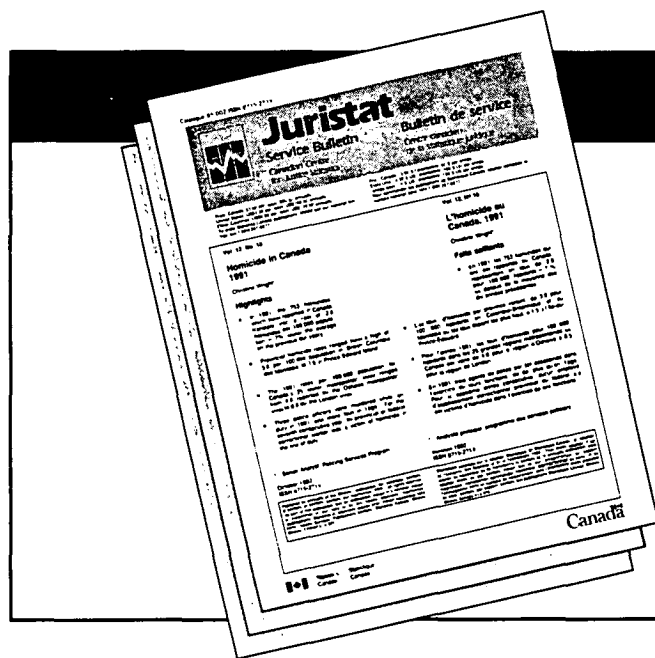
**JURISTAT** focuses on one topic per issue and covers more than 23 topics a year. In a brief, easy-to-read report, **JURISTAT** provides the most recent data available, with supporting analysis, tables and graphics to give you important details at a glance.

You will learn such interesting findings as:

- **Canadian justice services cost over \$7.7 billion in 1989-90 and employed 113,597 people.**
- **In 1990, over 108,000 motor vehicles were reported stolen in Canada. On average, almost one in four stolen motor vehicles were not recovered between 1980 and 1990.**

**JURISTAT** is an essential tool for anyone who has to plan, establish, administer and evaluate programs and projects. It is also a useful product for researchers or anyone who has an interest in Canada's justice system.

Rely on **JURISTAT's** wealth of information! Act now and subscribe to **JURISTAT** today (Catalogue no. 85-002), \$90 in Canada (GST not included), US\$108 in the United States and US\$126 in other countries.



### How to Order

**Write to:**  
Publication Sales  
Statistics Canada  
Ottawa, Ontario  
K1A 0T6

or contact the nearest Statistics Canada Regional Reference Centre listed in this publication.

For faster ordering, call toll-free:

**1-800-267-6677**  
and use VISA or MasterCard.  
Or fax your order to:  
**(613) 951-1584**