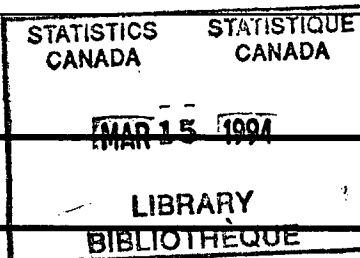


# The Daily

Statistics Canada

Tuesday, March 15, 1994

For release at 8:30 a.m.



## MAJOR RELEASE

### • Building Permits, January 1994

The seasonally adjusted value of building permits issued in January 1994 edged up 0.4% to \$2,111 million, from a revised value of \$2,102 million in December.

3

## DATA AVAILABILITY ANNOUNCEMENTS

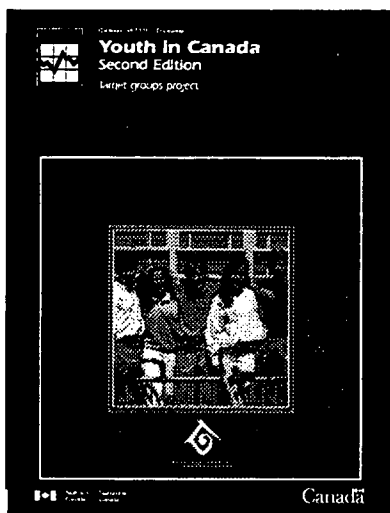
Intercensal and Postcensal Population Estimates for Census Divisions and Census Metropolitan Areas by Age Group and Sex, July 1, 1986 to 1992

6

Federal Government Enterprise Finance, Fiscal Year Ended Nearest to December 31, 1992 Actual

6

(continued on page 2)



### Youth in Canada

Second edition

For youths, the ages 15 to 19 are a transition period. Most still live at home and a growing percentage are enrolled in academic institutions. At the same time, however, they are beginning to experience problems and characteristics usually associated with adult life. Many, for example, have begun to leave home, others are entering the labour market for the first time. Youths have the highest unemployment rate of any age group in the country. In addition, those who head families or live alone have very low incomes.

These characteristics and others—demographic, family status, education, labour force characteristics, income, health, time-use patterns, criminal activity and victimization—are described in this report, which has drawn upon many sources.

*Youth in Canada, Second Edition* (89-511E, \$37) is now available. See "How to Order Publications".

For further information on this release, contact Colin Lindsay (613-951-2603; fax: 613-951-0387), Housing, Family and Social Statistics Division.



Statistics  
Canada

Statistique  
Canada

Canada

---

## DATA AVAILABILITY ANNOUNCEMENTS – Concluded

---

Provincial and Territorial Government Enterprise Finance, Fiscal Year Ended Nearest to December 31, 1991 Actual	6
Soft Drinks, February 1994	6
Deliveries of Major Grains, January 1994	7
Building Permits, 1993 Annual Summary	7

---

## PUBLICATIONS RELEASED

---

---

## REGIONAL REFERENCE CENTRES

---

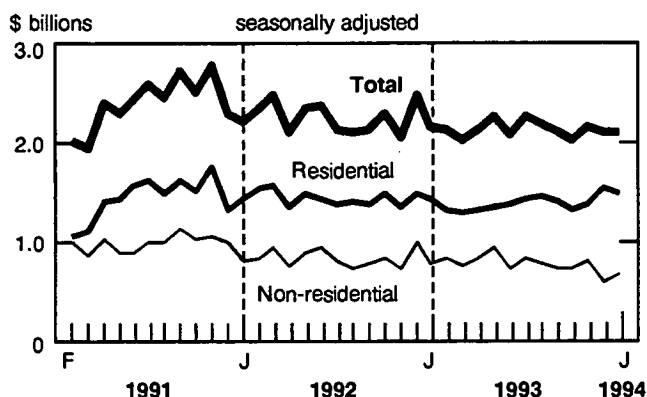
## MAJOR RELEASE

### Building Permits

January 1994 (Preliminary)

The seasonally adjusted value of building permits issued in January 1994 edged up 0.4% to \$2,111 million, from a revised value of \$2,102 million in December.

#### Value of building permits issued



This latest value was comparable to the \$2,132 million average for 1993 and continued the pattern of no detectable trend. An advance in the value of non-residential building permits (+12.0%) more than offset a decline in the value of residential permits (-4.0%). The trend for residential construction appears to be edging upward, though, while the trend for non-residential construction seems to be declining.

Regionally, British Columbia (+10.0%) and Ontario (+6.9%) dominated the scene in January. In Ontario, the increase was particularly notable in the residential sector, up 6.9% to \$554 million—a level not seen since June 1992.

#### Residential sector

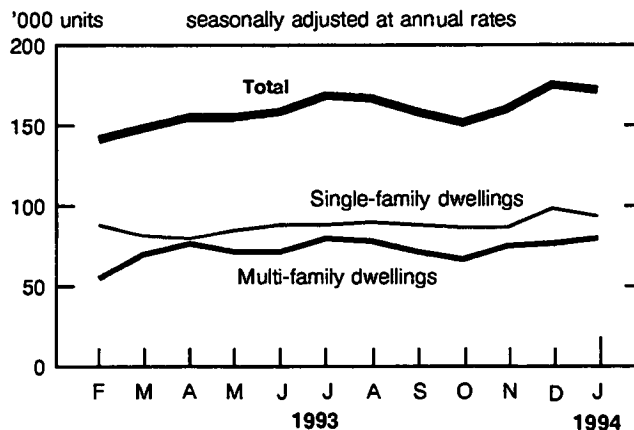
The residential sector, after increasing in November (+4.6%) and December (+11.1%), slipped 4.0% to \$1,461 million in January. Except for December, this value exceeded all others in 1993.

Although the overall value of residential building permits dropped, gains were recorded in Ontario (+6.9%)—due to a higher demand for multi-family dwelling permits—and in British Columbia (+1.4%), reflecting more applications for single-family dwelling permits.

Compared to January 1993, the seasonally adjusted value of residential building intentions increased 3.6% in January 1994, due entirely to a surge in multi-family dwellings.

Seasonally adjusted at an annual rate, the total number of dwelling units authorized declined by a slight 1.2% to 172,000 units in January, down from December's revised level of 174,000 units. This downturn in residential intentions was entirely attributable to the single-family dwelling sector (-5.4% to 93,000 units). By contrast, the multi-family dwelling sector rose 4.1% to 79,000 units; increases were notable in Ontario (+32.0%) and British Columbia (+14.6%).

#### Dwelling units authorized

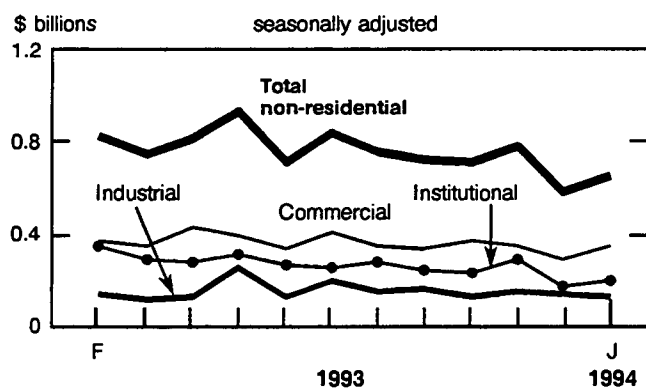


#### Non-residential sector

The non-residential sector's 12.0% increase to \$650 million in January followed December's exceptionally low \$580 million (a value not recorded since 1985). January's value, however, was 14.2% lower than in January 1993. If anything, the trend of non-residential permits is beginning to look more and more downward sloping.

Two of the three components of the non-residential sector increased, in value terms: commercial projects rose 17.8% and institutional projects rose 16.9%.

### Value of non-residential permits issued



All regions except the Atlantic (-33.6%) reported increases from December. The most significant increase in non-residential projects was in British Columbia (+41.8%), reflecting higher commercial and institutional construction intentions there.

Comparing January 1994 to January 1993, all regions were down except for the Atlantic (+5.8%); the decline was due to lower activity in all the components of the non-residential sector.

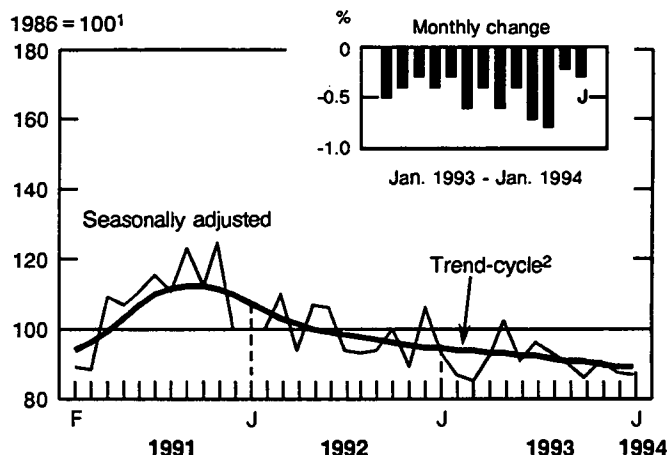
### Building permits indexes

The short-term trend index for building permits, which smooths irregular month-to-month movements not sustained over a longer period, decreased 0.3% to 88.6 in January 1994.

The short-term trend index for residential building permits went up 1.1% to 105.7, continuing the progress that began during the second half of 1993.

By contrast, the non-residential building permits short-term trend index decreased 3.1% to 65.4, a pattern that began in April 1993.

### Building permits indexes



<sup>1</sup> This series is deflated by using the construction input price index, which includes cost of material and labor.

<sup>2</sup> The trend-cycle shows the seasonally adjusted value of building permits without irregular influences that can obscure the short-term trend.

**Available on CANSIM:** matrices 80 (levels 3-7, 16-22), 129, 137, 443, 989-992, 994, 995 and 4073.

The January 1994 issue of *Building Permits* (64-001, \$24/\$240) will be released on March 22. The residential building permits advance estimate of February will be released on April 5.

For further information on statistics, contact Johanne Bureau (613-951-2583). For analytical information, contact Nathalie Léveillé (613-951-2025), Current Investment Indicators Section, Investment and Capital Stock Division. □

## Value of residential and non-residential building permits

Regions and types of construction	December 1993 <sup>r</sup>	January 1994 <sup>p</sup>	January 1993 to January 1994 <sup>p</sup>	December 1993 <sup>r</sup> to January 1994 <sup>p</sup>	December 1993 <sup>r</sup>	January 1994 <sup>p</sup>	January 1993 to January 1994 <sup>p</sup>	December 1993 <sup>r</sup> to January 1994 <sup>p</sup>
	\$ thousands		% change		\$ thousands		% change	
	seasonally adjusted				unadjusted			
<b>Canada</b>								
<b>Total construction</b>	<b>2,101,886</b>	<b>2,110,769</b>	<b>-2.6</b>	<b>0.4</b>	<b>1,422,808</b>	<b>1,071,412</b>	<b>-6.5</b>	<b>-24.7</b>
Residential	1,521,608	1,460,906	3.6	-4.0	903,946	673,177	1.4	-25.5
Non-residential	580,278	649,863	-14.2	12.0	518,862	398,235	-17.5	-23.2
Industrial	129,601	120,578	-25.6	-7.0	116,424	73,077	-29.4	-37.2
Commercial	285,133	335,832	-5.9	17.8	252,418	223,623	-6.1	-11.4
Institutional	165,544	193,453	-18.9	16.9	150,020	101,535	-28.0	-32.3
<b>Atlantic</b>								
<b>Total construction</b>	<b>141,610</b>	<b>97,988</b>	<b>-7.7</b>	<b>-30.8</b>	<b>67,260</b>	<b>31,126</b>	<b>-12.7</b>	<b>-53.7</b>
Residential	97,762	68,867	-12.4	-29.6	41,775	14,693	-17.9	-64.8
Non-residential	43,848	29,121	5.8	-33.6	25,485	16,433	-7.5	-35.5
Industrial	1,299	2,799	154.2	115.5	847	2,590	67.7	205.8
Commercial	27,043	20,388	17.6	-24.6	13,367	9,787	-1.2	-26.8
Institutional	15,506	5,934	-34.8	-61.7	11,271	4,056	-35.9	-64.0
<b>Quebec</b>								
<b>Total construction</b>	<b>426,946</b>	<b>418,689</b>	<b>-16.8</b>	<b>-1.9</b>	<b>254,079</b>	<b>165,164</b>	<b>-21.9</b>	<b>-35.0</b>
Residential	274,344	247,561	-13.2	-9.8	136,037	68,034	-20.3	-50.0
Non-residential	152,602	171,128	-21.5	12.1	118,042	97,130	-22.9	-17.7
Industrial	29,889	27,192	-58.0	-9.0	24,249	15,146	-60.9	-37.5
Commercial	44,582	72,938	-23.9	63.6	41,564	45,593	-22.7	9.7
Institutional	78,131	70,998	23.5	-9.1	52,229	36,391	28.5	-30.3
<b>Ontario</b>								
<b>Total construction</b>	<b>699,255</b>	<b>747,293</b>	<b>0.3</b>	<b>6.9</b>	<b>497,593</b>	<b>382,229</b>	<b>-4.9</b>	<b>-23.2</b>
Residential	517,975	553,814	4.7	6.9	293,446	254,019	2.5	-13.4
Non-residential	181,280	193,479	-10.6	6.7	204,147	128,210	-16.9	-37.2
Industrial	43,125	54,546	14.5	26.5	48,500	34,460	-0.3	-28.9
Commercial	105,766	94,846	1.7	-10.3	107,576	70,601	-2.7	-34.4
Institutional	32,389	44,087	-41.6	36.1	48,071	23,149	-50.8	-51.8
<b>Prairies</b>								
<b>Total construction</b>	<b>324,685</b>	<b>286,386</b>	<b>-5.5</b>	<b>-11.8</b>	<b>205,709</b>	<b>144,114</b>	<b>-14.7</b>	<b>-29.9</b>
Residential	230,514	183,919	-4.4	-20.2	132,833	86,475	-14.5	-34.9
Non-residential	94,171	102,467	-7.3	8.8	72,876	57,639	-15.1	-20.9
Industrial	29,003	22,705	-39.1	-21.7	24,787	12,459	-35.6	-49.7
Commercial	52,605	53,534	11.0	1.8	39,229	31,997	-8.5	-18.4
Institutional	12,563	26,228	5.0	108.8	8,860	13,183	-3.0	48.8
<b>British Columbia<sup>1</sup></b>								
<b>Total construction</b>	<b>509,390</b>	<b>560,413</b>	<b>9.8</b>	<b>10.0</b>	<b>396,392</b>	<b>348,779</b>	<b>6.3</b>	<b>-12.0</b>
Residential	401,013	406,745	25.0	1.4	299,855	249,956	18.2	-16.6
Non-residential	108,377	153,668	-17.0	41.8	98,312	98,823	-15.4	0.5
Industrial	26,285	13,336	17.9	-49.3	18,041	8,422	-10.4	-53.3
Commercial	55,137	94,126	-7.9	70.7	50,682	65,645	6.3	29.5
Institutional	26,955	46,206	-35.5	71.4	29,589	24,756	-45.8	-16.3

<sup>1</sup> Building permits issued for the Yukon and the Northwest Territories are included in the British Columbia region.<sup>p</sup> Preliminary figures.<sup>r</sup> Revised figures.

---

## DATA AVAILABILITY ANNOUNCEMENTS

---

### **Intercensal and Postcensal Population Estimates for Census Divisions and Census Metropolitan Areas by Age Group and Sex**

July 1, 1986 to 1992

Intercensal and postcensal annual estimates of population for census divisions and census metropolitan areas by age group and sex as of July 1, 1986 to 1992 are now available.

To obtain these data, contact Lise Champagne (613-951-2320), Demography Division or the nearest Statistics Canada Regional Reference Centre. For information on methodology, contact Robert Riordan (613-951-2287). ■

### **Federal Government Enterprise Finance**

Fiscal Year Ended Nearest to  
December 31, 1992 Actual

In 1992, federal government business enterprises (including monetary authorities) earned an after-tax profit of \$2.8 billion, up \$0.6 billion or 29.6% from the previous year.

Total income reached \$27.3 billion in 1992, up \$1.4 billion or 5.5% from 1991, while total expenses increased by \$0.4 billion or 1.6% to \$24.5 billion.

The gross debt (total liabilities) of federal government business enterprises stood at \$85.4 billion at the end of 1992, down \$2.9 billion or 3.3% from the previous year.

**Available on CANSIM: matrices 3214-3240.**

For further information on this release, contact Richard Sauriol (613-951-1829) or Jeannine D'Angelo (613-951-1834), Public Holdings Section, Public Institutions Division.

Data are also available through custom and special tabulations. For more information or general inquiries on Public Institutions Division's products or services, contact Jo-Anne Thibault, Data Dissemination Co-Ordinator (613-951-0767). ■

### **Provincial and Territorial Government Enterprise Finance**

Fiscal Year Ended Nearest to  
December 31, 1991 Actual

In 1991, provincial and territorial government business enterprises earned an after-tax profit of \$4.0 billion, up \$0.1 billion from \$3.9 billion in 1990.

Total income reached \$46.2 billion, a \$1.8 billion increase from 1990 total income, while total expenses were up \$1.7 billion to \$42.2 billion.

The gross debt (total liabilities) of provincial and territorial government business enterprises increased by \$14.0 billion (+8.8%) to \$173.0 billion at the end of 1991. Total assets stood at \$201.5 billion in 1991, an 8.4% increase from 1990.

**Available on CANSIM: matrices 3267-3270.**

Minor revisions to data for the years 1989 and 1990 have been made, in order to ensure that the series are consistent over time.

For further information on this release, contact Richard Sauriol (613-951-1829) or Jeannine D'Angelo (613-951-1834) Public Holdings Section, Public Institutions Division.

Data are also available through custom and special tabulations. For more information or general inquiries on Public Institutions Division's products or services, contact Jo-Anne Thibault, Data Dissemination and External Relations Co-Ordinator (613-951-0767). ■

### **Soft Drinks**

February 1994

Data for February 1994 on the production of soft drinks are now available.

**Available on CANSIM: matrix 196.**

*Monthly Production of Soft Drinks* (32-001, \$2.70/\$27) will be available shortly. See "How to Order Publications".

For further information on this release, contact Peter Zylstra (613-951-3511), Industry Division. ■

## Deliveries of Major Grains January 1994

Except for barley, flaxseed and canola, January deliveries of major grains by prairie farmers decreased from January 1993.

### Deliveries of major grains

	January 1993	January 1994
	thousand tonnes	
<b>Total major grains</b>	<b>2 717.9</b>	<b>2 318.8</b>
Wheat (excluding durum)	1 696.6	1 070.7
Durum wheat	205.7	178.8
<b>Total wheat</b>	<b>1 902.3</b>	<b>1 249.5</b>
Oats	69.5	48.3
Barley	394.7	505.7
Rye	15.5	12.9
Flaxseed	25.7	35.9
Canola	310.2	466.5

Available on CANSIM: matrices 976-981.

The January 1994 issue of *Cereals and Oilseeds Review* (22-007, \$13.80/\$138) is scheduled for release in April. See "How to Order Publications".

For further information on this release, contact Alain Y. Bertrand (613-951-3859) or Karen Gray (204-983-2856), Agriculture Division. ■

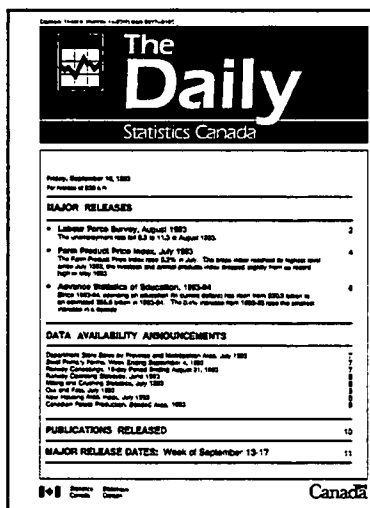
## Building Permits 1993 Annual Summary

The total value of building permits issued in Canada was \$25.6 billion in 1993, down 5.2% from \$27.0 billion in 1992.

Available on CANSIM: matrices 80, 129 and 992.

The 1993 issue of *Building Permits, Annual Summary* (64-203, \$60) will be available in April.

For further information on this release, contact Johanne Bureau (613-951-9689), Investment and Capital Stock Division. ■



## Statistics Canada's Official Release Bulletin

Catalogue 11-001E. (Canada: \$120; United States: US\$144; Other Countries: US\$168.)

Published each working day by the Communications Division, Statistics Canada, 10-M, R.H. Coats Bldg., Tunney's Pasture, Ottawa, Ontario K1A 0T6.

Editor: Tim Prichard (613-951-1103)

Editor in chief: Greg Thomson (613-951-1187)

Published by authority of the Minister responsible for Statistics Canada. © Minister of Industry, Science and Technology, 1994. All rights reserved. No part of this publication may be reproduced, stored in a retrieval system or transmitted in any form or by any means, electronic, mechanical, photocopying, recording or otherwise without prior written permission from Licence Services, Marketing Division, Statistics Canada, Ottawa, Ontario, Canada K1A 0T6.

## PUBLICATIONS RELEASED

**Particleboard, Waferboard and Fibreboard,**  
January 1994.

**Catalogue number 36-003**

(Canada: \$5/\$50; United States: US\$6/US\$60; Other  
Countries: US\$7/US\$70).

**Passenger Bus and Urban Transit Statistics,**  
January 1994. Vol. 46, No. 1.

**Catalogue number 53-003**

(Canada: \$7.10/\$71; United States: US\$8.50/US\$85;  
Other Countries: US\$9.90/US\$99).

**Passenger Bus and Urban Transit Statistics,**  
1991.

**Catalogue number 53-215**

(Canada: \$36; United States: US\$43; Other  
Countries: US\$50).

**Quarterly Report on Energy Supply-Demand in**  
**Canada, 1993-III.**

**Catalogue number 57-003**

(Canada: \$31.75/\$127; United States:  
US\$38/US\$152; Other Countries: US\$44.50/US\$178).

**Touriscope, International Travel— Advance**  
**Information, January 1994. Vol. 10, No. 1.**

**Catalogue number 66-001P**

(Canada: \$6.10/\$61; United States: US\$7.30/US\$73;  
Other Countries: US\$8.50/US\$85).

**Youth in Canada, Second Edition.**

**Catalogue number 89-511E**

(Canada: \$37; United States: US\$44; Other  
Countries: US\$52).

The paper used in this publication meets the minimum  
requirements of American National Standard for  
Information Sciences – Permanence of Paper for Printed  
Library Materials, ANSI Z39.48 – 1984.



### How to Order Publications

Simplify your data search with *Statistics Canada Catalogue, 1993* (11-204E, \$13.95; United States: US\$17; Other Countries: US\$20).  
Its keyword index will guide you to statistics on Canada's social and economic activity.

**Order *The Daily* and other publications by phone:**

Please refer to the • Title • Catalogue Number • Volume Number • Issue Number • your VISA or MasterCard Number.

In Canada and the United States call:

**1-800-267-6677**

From other countries call:

**1-613-951-7277**

Or fax your order to us:

**1-613-951-1584**

**For address changes:** Please refer to your Customer Account Number.

**To order a publication by mail write:** Sales and Service, Marketing Division, Statistics Canada, Ottawa, K1A 0T6.  
Include a cheque or money order payable to Receiver General of Canada/Publications. Canadian customers add 7% GST.

**Statistics Canada Regional Reference Centres provide a full range of the Agency's products and services.**

For the reference centre nearest you, check the blue pages of your telephone directory under Statistics Canada.

**Authorized agents and bookstores also carry Statistics Canada's catalogued publications.**



---

## REGIONAL REFERENCE CENTRES

---

Statistics Canada's Regional Reference Centres offer a full range of the agency's products and services. Each reference centre is equipped with a library and a sales counter where users can consult or purchase publications, microcomputer and CD-ROM diskettes, microfiche, maps and more.

Each centre has facilities to retrieve information from CANSIM and E-STAT, Statistics Canada's computerized data retrieval systems. A telephone inquiry service is available with toll-free access for clients who are located outside local calling areas. Many other valuable services — from seminars to consultations — are also offered. Call or write your nearest Regional Reference Centre for more information.

**Newfoundland and Labrador, Nova Scotia, Prince Edward Island and New Brunswick**

Advisory Services  
Statistics Canada  
North American Life Centre  
1770 Market Street  
Halifax, Nova Scotia  
B3J 3M3

Local calls: (902) 426-5331  
Toll free: 1-800-565-7192  
Fax: 1-902-426-9538

**Québec**

Advisory Services  
Statistics Canada  
Suite 412, East Tower  
Guy Favreau Complex  
200 René Lévesque Blvd. W.  
Montréal, Québec  
H2Z 1X4

Local calls: (514) 283-5725  
Toll free: 1-800-361-2831  
Fax: 1-514-283-9350

**National Capital Region**

Statistical Reference Centre (NCR)  
Statistics Canada  
Lobby, R.H. Coats Building  
Holland Avenue  
Tunney's Pasture  
Ottawa, Ontario  
K1A 0T6

If outside the local calling area, please dial the toll free number for your province.

Local calls: (613) 951-8116  
Fax: 1-613-951-0581

**Ontario**

Advisory Services  
Statistics Canada  
10<sup>th</sup> Floor  
Arthur Meighen Building  
25 St. Clair Avenue East  
Toronto, Ontario  
M4T 1M4

Local calls: (416) 973-6586  
Toll free: 1-800-263-1136  
Fax: 1-416-973-7475

**Manitoba**

Advisory Services  
Statistics Canada  
Suite 300, MacDonald Building  
344 Edmonton Street  
Winnipeg, Manitoba  
R3B 3L9

Local calls: (204) 983-4020  
Toll free: 1-800-661-7828  
Fax: 1-204-983-7543

**Saskatchewan**

Advisory Services  
Statistics Canada  
Avord Tower, 9<sup>th</sup> Floor  
2002 Victoria Avenue  
Regina, Saskatchewan  
S4P 0R7

Local calls: (306) 780-5405  
Toll free: 1-800-667-7164  
Fax: 1-306-780-5403

**Southern Alberta**

Advisory Services  
Statistics Canada  
First Street Plaza, Room 401  
138-4<sup>th</sup> Avenue Southeast  
Calgary, Alberta  
T2G 4Z6

Local calls: (403) 292-6717  
Toll free: 1-800-563-7828  
Fax: 1-403-292-4958

**Alberta and the Northwest Territories**

Advisory Services  
Statistics Canada  
8<sup>th</sup> Floor, Park Square  
10001 Bellamy Hill  
Edmonton, Alberta  
T5J 3B6

Local calls: (403) 495-3027  
Toll free: 1-800-563-7828  
Fax: 1-403-495-5318

**British Columbia and the Yukon**

Advisory Services  
Statistics Canada  
Sinclair Centre, Suite 300  
757 West Hastings Street  
Vancouver, B.C. V6C 3C9

Local calls: (604) 666-3691  
Toll free: 1-800-663-1551  
Fax: 1-604-666-4863

**Telecommunications Device for the Hearing Impaired**

Toll free: 1-800-363-7629



1010160768

**Now  
More Than Ever,  
Strategic Planning  
Requires Reliable  
Trade Information...**

## **. . And We've Got It.**

At the International Trade Division, Statistics Canada, we edit, compile and analyse data from hundreds of thousands of Customs documents each month. Available on tape, printouts, microfiche, diskettes or publications, these statistics can serve to:

- ✓ determine market shares
- ✓ identify domestic and foreign market trends
- ✓ forecast inventory and plan production
- ✓ describe merchandise trade

### **Do You Need A Special Report Designed To Meet Your Specific Needs? We've Got It!**

If you are interested in one commodity or a certain country, you may wish a monthly, quarterly or annual report on exports/imports. We can tailor a report just for you. Data variables include:

- ✓ U.S. state of destination
- ✓ quantity shipped
- ✓ mode of transport
- ✓ HS class
- ✓ country origin/destination
- ✓ value of commodity shipped

### **Do You Need Comprehensive World Trade Data? We've Got It!**

Our World Trade Database presents a complete matrix of country to country trade flows for 160 countries, 600 commodities and 300 industries. That's the most comprehensive database of comparable trade data available today.

### **Do You Need a Complete Database of Timely Trade Statistics?**

#### **We've Got It!**

TIERS, our new software package provides data on over 15,000 commodities for 200 countries at the most detailed level for imports and exports. It is updated monthly, just 48 hours after the data are released and allows you immediate access to quantity, value, province, year and U.S. state code variables.

---

To receive a free copy of the Catalogue of Products and Services available from the International Trade Division or to talk with a technical consultant about how we can help you, please contact:

Trade Information Unit,  
International Trade Division,  
9-B2 Jean Talon Building, Tunney's Pasture,  
Ottawa, Ontario K1A 0T6,  
Tel: (613) 951-9647, Fax: (613) 951-0117

**Put Our Data  
To Work For You!**