

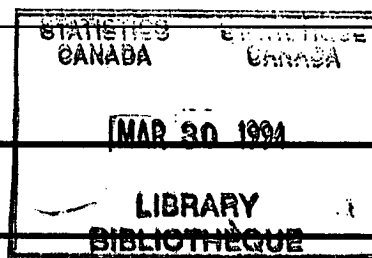


# The Daily

Statistics Canada

Wednesday, March 30, 1994

For release at 8:30 a.m.



## MAJOR RELEASES

- **Employment, Earnings and Hours, January 1994** 3  
Average weekly earnings stood at \$562.78 in January, up 1.3% from January 1993. The increase equalled the rate of inflation, continuing the pattern observed throughout 1993, when workers saw no real earnings growth.
- **Unemployment Insurance Statistics, January 1994** 7  
In January, the number of beneficiaries receiving regular benefits (seasonally adjusted) decreased 3.9% to 975,000. Excepting August 1993, the number of beneficiaries of regular benefits has been decreasing every month since November 1992.
- **Crude Oil and Natural Gas, January 1994** 9  
Natural gas production rose 10.7% and crude oil production rose 9.1% from January 1993, reflecting robust exports and a sharp rise in domestic demand.

(continued on page 2)

### Profiles of Census Divisions and Subdivisions—Part B: Area Profile Series 1991 Census

Census division and subdivision profiles from the 1991 Census are now available for each province and territory. Each publication provides data collected from a 20% sample of households on characteristics such as home language, ethnic origin, place of birth, education, religion, labour force activity, housing costs and income.

Census divisions and subdivisions are presented in alphabetical order for each province and territory. Data at the Canada level are also shown and a geographical index is included.

To obtain any or all of these *Profiles*, which are listed in the "Publications Released" section of today's *Daily*, see "How to Order Publications".

For further information, contact your nearest Statistics Canada Regional Reference Centre.



Statistics  
Canada

Statistique  
Canada

Canada

---

## DATA AVAILABILITY ANNOUNCEMENTS

---

Occupation According to the 1980 Standard Occupational Classification, 1991 Census	
Technical Reports	10
Asphalt Roofing, February 1994	10
Campus Bookstores, 1992-93	10
Pack of Apples and Apple Products, 1992	10
<b>1992 Annual Survey of Manufactures</b>	
Carpet, Mat and Rug Industry	10
Canvas and Related Products Industry	10
Contract Textile Dyeing and Finishing Industry	11
Household Products of Textile Materials Industry	11
Other Commercial Printing Industries	11
Platemaking, Typesetting and Bindery Industry	11
Other Stamped and Pressed Metal Products Industries	11
Plastic Parts and Accessories for Motor Vehicles Industry	11
Other Motor Vehicle Accessories, Parts and Assemblies Industries	12
Shipbuilding and Repair Industry	12
Boatbuilding and Repair Industry	12
Other Electrical Industrial Equipment Industries	12
Other Electrical Products Industries	12
Other Chemical Products Industries	12
Sporting Goods Industry	13

---

## PUBLICATIONS RELEASED

---

14

---

## REGIONAL REFERENCE CENTRES

---

16

## MAJOR RELEASES

### Employment, Earnings and Hours

January 1994 (Preliminary)

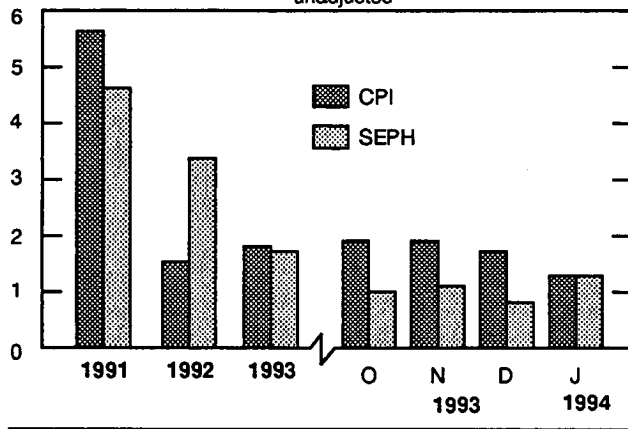
Average weekly earnings stood at \$562.78 in January, up 1.3% from January 1993. The increase equalled the rate of inflation, continuing the pattern observed throughout 1993, when workers saw no real earnings growth.

#### Average weekly earnings

Average weekly earnings stood at \$562.78 in January, up 1.3% from January 1993. The 1.3% increase was up substantially from December (+0.8%), which was largely influenced by unpaid holidays taken during the month in provincial administration. The longer-term trend in earnings, however, continued to show smaller increases, with growth in January 1994 (+1.3%) at half the January 1993 level (+2.6%). The increase equalled the rate of inflation, continuing the pattern observed throughout 1993, when workers saw no real earnings growth.

#### Average weekly earnings

Year-over-year  
% change



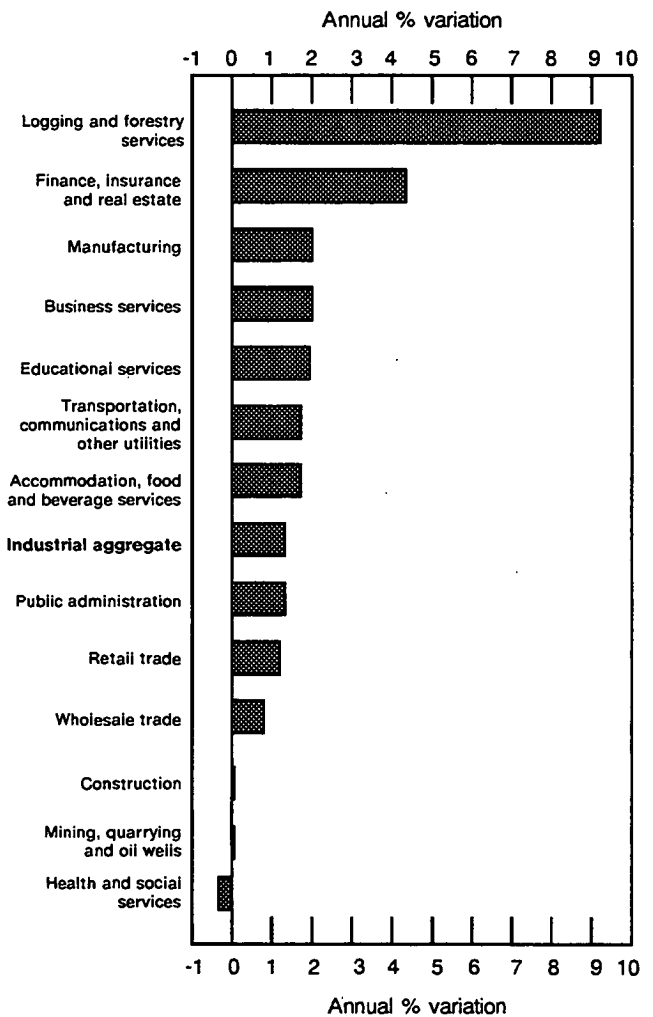
Sizable increases in average weekly earnings on a year-over-year basis in logging and forestry (+9.2%) and finance and insurance (+5.9%) were moderated by lower earnings in real estate operators and insurance agencies (-1.5%) and health and social services (-0.3%). The remaining major industry groups recorded growth rates in earnings of less than 2.1%.

#### Note to users

The Survey of Employment, Payrolls and Hours covers all industries except agriculture, fishing and trapping, religious organizations, private households and defence services.

Year-over-year changes refer to unadjusted data.

#### Average weekly earnings, 1993 to 1994



The year-over-year earnings growth in logging and forestry was concentrated in Alberta and British Columbia, and was due in part to increases in both average weekly hours (+7.1%) and average hourly

earnings (+6.6%) for employees paid by the hour. Employees paid by the hour represent about 48% of the employment in logging and forestry.

Increased activity in securities markets continued to contribute to the strong growth in average weekly earnings in finance and insurance in January (+5.9%). Average weekly earnings in other financial intermediaries, which include securities brokers and dealers (28,000 employees), rose 29.4% to \$1,443.24. All the remaining industry components for the finance and insurance group had year-over-year increases in earnings of less than 5.9%. The largest earnings increases were reported in British Columbia (+20.8%), Alberta (+6.5%) and Ontario (+4.0%).

The year-over-year drop in average weekly earnings for real estate operators and insurance agencies in January 1994 sharply contrasted the 12.1% earnings jump in January 1993. Average weekly earnings for insurance and real estate agencies (83,000 employees) fell 6.3% due to declining commissions. Earnings decreases in Alberta (-13.6%) and Quebec (-11.7%) were partly offset by increases in Ontario (+5.2%) and British Columbia (+1.3%).

## Employment

Seasonally adjusted payroll employment edged up 0.1% to 9,944,000 in January. The small monthly increase echoed the slow pace of the employment recovery observed since January 1993, when payroll employment stood at 9,937,000.

Small employment gains were recorded in manufacturing during the past four months, as demand for manufactured goods remained steady. Since September 1993, there has been a gain of 8,900 employees. Employment remained virtually unchanged in January despite the impact of temporary employment layoffs in the non-ferrous metal smelting and refining industry and in the motor vehicle industry. The gradual improvement in manufacturing industries was also reflected in the rise in the shipments to stocks ratio observed since October 1993. Another indicator of increased activity in manufacturing in January was a rise in average weekly hours for employees paid by the hour (+0.3%).

Year-over-year, employment increased 0.4% in January, with the strongest employment gains in wood industries (+11,400), machinery industries (+8,800) and plastic products (+5,100). These same industries have been responsible for most of the employment growth over the past four months. The trend in exports for wood products and

machinery and equipment has been positive in recent months, due in large part to increased demand in the United States.

Employment in transportation, communications and other utilities rebounded 1.0% in January, recovering some of the 14,000 jobs lost in the previous two months. This advance was widespread across the major components in the transportation industries. Industry employment as a whole, however, remained well below the peak levels recorded in 1990, and stood at 796,000. This was the same level that was observed in April 1987.

Construction employment fell an additional 3,300 in January, bringing the employment loss since January 1993 to 9,800. This drop in employment from the previous year was considerably smaller than in 1993 and 1992, when construction employment fell by 40,100 and 56,600 respectively. Average weekly hours for employees paid by the hour continued to deteriorate, falling by nearly one hour over the same period. The recent drop in activity in construction was partly attributable to a decline in residential housing starts, which fell 12.4% in January.

Layoffs in metal mines contributed to the employment weakness in mining, quarrying and oil wells, resulting in the first drop in employment since July 1993. Employment in this industry grew by 1.9% on average per month from August to December 1993—led by services incidental to crude petroleum and natural gas. This industry continued to grow in January. A drop in average weekly hours of 2.8% (or just over one hour) was also recorded in January in mining, quarrying and oil wells.

Employment in business services declined in January (-4,600) after five consecutive monthly increases. Accounting and bookkeeping services, which had a lower than usual seasonal increase, and computer and related services contributed to the decline. In tandem with this employment loss was a drop in average weekly hours, which fell about half an hour from December's 29.7 hours. Although business services employment fell from the previous month, it still remained higher than in the previous year. Employment agencies and personnel suppliers continued to record strong year-over-year employment growth (+26.4%).

As for the provinces, employment gains in Alberta (+16,400), Manitoba (+3,400) and British Columbia (+2,900) were partially offset by small losses in Ontario (-10,700) and Quebec (-10,900). There were no significant changes in employment levels in the remaining provinces. The employment growth in Alberta was widespread and included those industries related to the petroleum and natural gas industry.

**Total hours (employees paid by the hour and salaried employees)**

Year-over-year, total hours for all industries remained unchanged in January. A gain in total hours for hourly paid employees (+2.6%) was offset by a drop for salaried employees (-2.1%), a trend which was observed throughout 1993.

Growth in total hours for small firms (+1.7%) has outpaced growth in total hours for large firms (firms with 200 or more employees), which actually declined (-1.2%). The same pattern has been observed for large- and small-firm employment since January 1993.

Available on CANSIM: matrices 4285-4466, 9438-9452 and 9639-9911.

Detailed industry data and other labour market indicators are available from *Employment, Earnings and Hours* (72-002, \$28.50/\$285) and by special tabulation.

For further information on this release or on the program, products and services, contact Stephen Johnson (613-951-4090, fax 613-951-4087), Labour Division. □

**Average weekly earnings\***

Industry group (1980 S.I.C.)	December 1993 <sup>r</sup>	January 1994 <sup>p</sup>	December 1993 to January 1994	January 1993	January 1994 <sup>p</sup>	January 1993 to January 1994
	dollars		% change	dollars		% change
	seasonally adjusted			unadjusted		
<b>Industrial aggregate</b>	561.88	563.77	0.3	555.49	562.78	1.3
Logging and forestry	728.01	754.75	3.7	719.44	785.66	9.2
Mining, quarrying and oil wells	959.43	951.17	-0.9	966.36	966.28	0.0
Manufacturing	675.76	679.10	0.5	668.73	682.12	2.0
Construction	647.29	643.95	-0.5	640.06	639.87	0.0
Transportation, communications and other utilities	722.33	721.08	-0.2	710.99	723.08	1.7
Trade	411.26	412.04	0.2	405.36	409.33	1.0
Wholesale trade	601.66	598.69	-0.5	597.95	603.01	0.8
Retail trade	328.03	329.79	0.5	321.55	325.35	1.2
Finance, insurance and real estate	644.14	642.47	-0.3	614.68	641.39	4.3
Business services	593.20	589.63	-0.6	577.97	589.63	2.0
Education-related services	677.65	681.25	0.5	651.73	664.05	1.9
Health and social services	498.17	497.24	-0.2	496.51	494.94	-0.3
Accommodation, food and beverage services	216.39	219.47	1.4	211.71	215.27	1.7
Public administration	727.74	745.17	2.4	743.09	752.80	1.3
<b>Provinces and territories</b>						
Newfoundland	534.48	535.89	0.3	515.41	538.08	4.4
Prince Edward Island	456.27	461.02	1.0	455.00	465.87	2.4
Nova Scotia	488.82	497.59	1.8	492.82	497.59	1.0
New Brunswick	503.76	504.43	0.1	501.38	504.43	0.6
Quebec	538.38	542.51	0.8	542.76	542.51	0.0
Ontario	596.72	597.99	0.2	584.45	595.24	1.8
Manitoba	491.42	493.92	0.5	492.12	495.00	0.6
Saskatchewan	476.84	473.86	-0.6	474.04	475.74	0.4
Alberta	555.02	549.53	-1.0	556.46	552.72	-0.7
British Columbia	568.47	573.19	0.8	552.18	575.01	4.1
Yukon	690.32	692.89	0.4	693.95	692.89	-0.2
Northwest Territories	703.99	696.54	-1.1	714.79	699.30	-2.2

<sup>p</sup> Preliminary estimates.  
<sup>r</sup> Revised estimates.  
<sup>\*</sup> For all employees.

**Number of employees**

Industry group (1980 S.I.C.)	December 1993 <sup>r</sup>	January 1994 <sup>p</sup>	December 1993 to January 1994	January 1993	January 1994 <sup>p</sup>	January 1993 to January 1994
	thousands			% change		
	seasonally adjusted			unadjusted		
<b>Industrial aggregate</b>	9,935	9,944	0.1	9,688	9,690	0.0
Logging and forestry	60	59	-1.7	51	52	2.0
Mining, quarrying and oil wells	124	122	-1.6	118	118	0.0
Manufacturing	1,589	1,589	0.0	1,533	1,539	0.4
Construction	387	384	-0.8	325	314	-3.4
Transportation, communications and other utilities	789	796	0.9	798	779	-2.4
Trade	1,880	1,879	-0.1	1,830	1,843	0.7
Wholesale trade	571	572	0.2	555	557	0.4
Retail trade	1,304	1,303	-0.1	1,275	1,286	0.9
Finance, insurance and real estate	633	633	0.0	647	621	-4.0
Business services	519	514	-1.0	477	507	6.3
Education-related services	919	915	-0.4	971	955	-1.6
Health and social services	1,119	1,122	0.3	1,105	1,107	0.2
Accommodation, food and beverage services	692	691	-0.1	653	652	-0.2
Public administration	714	713	-0.1	698	696	-0.3
<b>Provinces and territories</b>						
Newfoundland	140	140	0.0	128	132	3.1
Prince Edward Island	39	39	0.0	36	36	0.0
Nova Scotia	279	279	0.0	273	268	-1.8
New Brunswick	227	227	0.0	213	214	0.5
Quebec	2,416	2,406	-0.4	2,324	2,326	0.1
Ontario	3,909	3,899	-0.3	3,885	3,827	-1.5
Manitoba	369	372	0.8	371	364	-1.9
Saskatchewan	299	299	0.0	289	292	1.0
Alberta	961	977	1.7	937	956	2.0
British Columbia	1,270	1,273	0.2	1,202	1,242	3.3
Yukon	11	12	9.1	11	11	0.0
Northwest Territories	21	21	0.0	20	20	0.0

<sup>p</sup> Preliminary estimates.

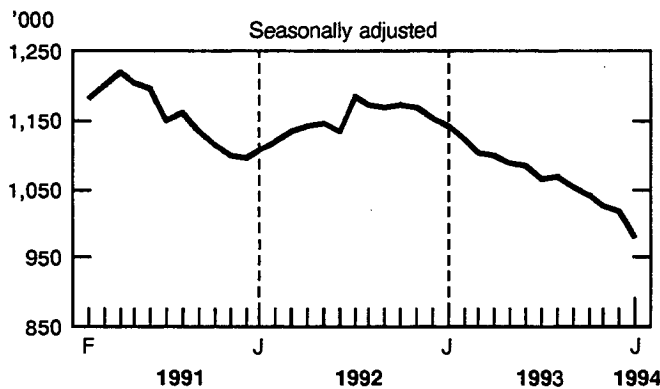
<sup>r</sup> Revised estimates.

## Unemployment Insurance Statistics

January 1994 (Preliminary)

For the week ending January 15, 1994, the seasonally adjusted number of beneficiaries who received regular unemployment insurance benefits stood at 975,000, down 3.9% from a month earlier. Excepting August 1993, the number of beneficiaries of regular benefits has been decreasing every month since November 1992.

### Beneficiaries receiving regular U. I. benefits



Between December 1993 and January 1994, the number of beneficiaries who received regular benefits declined in all jurisdictions except for Manitoba, where a 1.0% increase was observed. Decreases exceeding 2% occurred in Ontario (-6.8%), the Yukon (-4.4%), British Columbia (-3.7%), Saskatchewan (-3.2%), Newfoundland (-2.9%) and Quebec (-2.8%).

### Unadjusted

In January 1994, the estimated number of beneficiaries (including all persons qualifying for regular and special unemployment insurance benefits) was 1,383,000, down 11.4% from January 1993. Year-over-year, the number of male beneficiaries decreased 12.8% to 808,000 and the number of female beneficiaries declined 9.5% to 575,000.

#### Note to users

The number of beneficiaries represents those who qualified for unemployment insurance benefits during a specific week of the reference month.

Data on benefit payments, number of benefit weeks and number of claims received relate to a complete calendar month and are usually final estimates. These estimates are affected by the number of working days in the reference month to process claims and pay benefits. It is common when making short-term comparisons to observe different trends between these data and the number of beneficiaries.

Benefits shown here include payments to schools and colleges to train beneficiaries (since February 1991) and payments to claimants as self-employment assistance (since June 1992).

### Beneficiaries of all types of benefits

	January 1994	January 1993 to January 1994
		% change
<b>Census metropolitan area</b>		
St. John's	13,270	-19.7
Halifax	14,870	-5.5
Saint John	6,100	-11.1
Chicoutimi-Jonquière	12,530	-5.3
Québec	39,360	-3.0
Sherbrooke	8,060	-12.4
Trois-Rivières	9,520	-14.5
Montréal	160,590	-12.3
Hull	11,960	-3.9
Ottawa	17,780	-15.9
Oshawa	9,970	-8.9
Toronto	129,900	-15.9
Hamilton	18,980	-18.3
St. Catharines-Niagara	16,560	-15.0
Kitchener	11,340	-15.4
London	10,840	-27.5
Windsor	8,470	-24.8
Sudbury	7,160	-18.6
Thunder Bay	5,930	-9.6
Winnipeg	23,090	-11.6
Regina	5,520	-14.2
Saskatoon	7,700	-8.7
Calgary	27,450	-18.2
Edmonton	32,430	-8.1
Vancouver	61,820	-16.0
Victoria	9,310	-13.6

Unemployment insurance payments in January 1994 totalled \$1.7 billion, down 7.7% from January 1993. Year-over-year, the average weekly payment remained virtually the same at \$264.18 while the number of benefit weeks decreased 9.5% to 6.2 million.

A total of 340,000 claims (applications) for unemployment insurance benefits were received in January 1994, down 4.0% from January 1993.

Available on CANSIM: matrices 26 (series 1.6), 5700-5717, 5735 and 5736.

The January 1994 issue of *Unemployment Insurance Statistics* (73-001, \$14.70/\$147), containing data for November 1993, December 1993 and January 1994, will be available in April. See "How to Order Publications".

For further information, contact Carole Lacroix (613-951-4039) or André Picard (613-951-4045), Labour Division (fax: 613-951-4087).

### Unemployment insurance statistics

		January 1993	November 1993	December 1993	January 1994	December 1993 to January 1994
<b>Regular benefits</b>		seasonally adjusted				% change
Beneficiaries	'000	1,141	1,023 <sup>r</sup>	1,015 <sup>P</sup>	975 <sup>P</sup>	-3.9
Amount paid	\$'000	1,279,200	1,145,332	1,145,622	1,117,022	-2.5
Weeks of benefits	'000	4,996	4,483	4,481	4,392	-2.0
		January 1993	November 1993	December 1993	January 1994	January 1993 to January 1994
		unadjusted				% change
All beneficiaries	'000	1,562	1,139 <sup>r</sup>	1,264 <sup>P</sup>	1,383 <sup>P</sup>	-11.4
Regular beneficiaries	'000	1,330	923 <sup>r</sup>	1,029 <sup>P</sup>	1,151 <sup>P</sup>	-13.5
Claims received	'000	355	386	350	340	-4.0
Amount paid	\$'000	1,834,837	1,349,944	1,457,611	1,693,509	-7.7
Weeks of benefits	'000	6,833	5,088	5,436	6,181	-9.5
Average weekly benefit	\$	264.30	257.77	262.01	264.18	0.0

<sup>p</sup> Preliminary figures.

<sup>r</sup> Revised figures.

"All beneficiaries" includes all claimants who receive regular benefits (e.g., because of lay-off) or special benefits (e.g., in case of sickness). ■



## Crude Oil and Natural Gas

January 1994 (Preliminary)

Natural gas production rose 10.7% and crude oil production rose 9.1% from January 1993, reflecting robust exports and a sharp rise in domestic demand. Record cold weather in most of Canada caused the increase in domestic demand. Exports of natural gas rose 18.4% from January 1993, while crude oil exports were up 12.5%.

### Crude oil

Production of crude oil increased 9.1% from January 1993, to 9.2 million cubic metres.

Crude oil exports were up 12.5% from January 1993, to 4.6 million cubic metres.

Imports of crude oil increased 28.4% to 3.7 million cubic metres in January 1994. Increased demand in the United States for Canadian refined-petroleum products contributed to the rise in crude oil imports.

Refinery receipts of crude oil in January were up 14.3% to 7.1 million cubic metres. Strong demand for refined petroleum products in January led to the increase.

### Note to users

The crude petroleum and natural gas industry (SIC 071) is an important sector of the economy, especially in Western Canada. In 1993, the total value of crude oil and natural gas production amounted to \$21.2 billion, of which \$12.7 billion was exported. (Crude oil production was valued at \$11.2 billion and natural gas production at \$10.0 billion.) The industry employs 35,000 and has annual capital expenditures of \$6.5 billion.

### Natural gas

Production of natural gas rose 10.7% from January 1993, to 12.1 billion cubic metres.

Natural gas exports increased 18.4% from January 1993, to 6.5 billion cubic metres.

Domestic sales of natural gas advanced 9.9% from January 1993, to 8.2 billion cubic metres. The sharp increase was largely due to record cold weather throughout most of Canada in January.

**Available on CANSIM: matrices 530 and 539.**

The January 1994 issue of *Crude Petroleum and Natural Gas Production* (26-006, \$10/\$100) will be available the last week of April. See "How to Order Publications".

For further information on this release, contact Brian Preston (613-951-3563), Energy Section, Industry Division.

### Crude oil and natural gas

	January 1993	January 1994	January 1993 to January 1994
	thousands of cubic metres		% change
<b>Crude oil and equivalent hydrocarbons<sup>1</sup></b>			
Production	8 420.1	9 186.9	9.1
Exports	4 100.7	4 612.2	12.5
Imports	2 892.0	3 713.4	28.4
Refinery receipts	7 529.4	8 604.3	14.3
	millions of cubic metres		% change
<b>Natural gas<sup>2</sup></b>			
Marketable production	10 936.6	12 101.7	10.7
Exports	5 498.2	6 507.4	18.4
Canadian sales <sup>3</sup>	7 450.6	8 185.5	9.9

<sup>1</sup> Disposition may differ from production due to inventory change, industry own-use, etc.

<sup>2</sup> Disposition may differ from production due to inventory change, usage as pipeline fuel, pipeline losses, line-pack fluctuations, etc.

<sup>3</sup> Includes direct sales.

---

## DATA AVAILABILITY ANNOUNCEMENTS

---

### Occupation According to the 1980 Standard Occupational Classification

1991 Census Technical Reports

*Occupation According to the 1980 Standard Occupational Classification*, the fifth report from the new 1991 Census Technical Reports Series is now available.

The Technical Reports Series examines the quality of the 1991 Census data and informs users of the following: the conceptual framework and definitions used in data collection; any unusual circumstances that may influence the data; principal sources of error; and, where possible, the size of the error.

To obtain a copy of *Occupation According to the 1980 Standard Occupational Classification* (92-339E, \$20), which examines the quality of occupational data, see "How to Order Publications."

For further information, contact your nearest Statistics Canada Regional Reference Centre. ■

### Asphalt Roofing

February 1994

Shipments of asphalt shingles totalled 1 414 602 metric bundles in February 1994, a 7.7% increase from 1 313 699 metric bundles a year earlier.

For January to February 1994, shipments totalled 2 893 821 metric bundles, up 0.9% from 2 868 183 metric bundles shipped during the same period in 1993.

**Available on CANSIM: matrices 32 and 122 (series 27 and 28).**

The February 1994 issue of *Asphalt Roofing* (45-001, \$5/\$50) will be available later.

For further information on this release, contact Sandra Bohatyretz (613-951-3531), Industry Division. ■

### Campus Bookstores

1992-93

During the 1992-93 academic year, retail sales of campus bookstores totalled \$469 million, a 5% increase from the 1991-92 academic year.

Of the total net sales, textbooks accounted for 64%, other books 8%, stationery and supplies 9% and miscellaneous items 19%.

The 1992-93 issue of *Campus Bookstores* (63-219, \$22) is now available. See "How to Order Publications".

For further information on this release, contact Diane Lake (613-951-9824), Industry Division. ■

### Pack of Apples and Apple Products

1992

Data for 1992 on the pack of processed apples are now available.

*Pack of Apples and Apple Products, 1992* (32-241, \$13) will be available shortly. See "How to Order Publications".

For further information, contact Peter Zylstra (613-951-3511), Industry Division. ■

### Carpet, Mat and Rug Industry

1992 Annual Survey of Manufactures

In 1992, the value of shipments of goods of own manufacture for the carpet, mat and rug industry (SIC 1921) totalled \$710.0 million, up 1.6% from \$698.5 million in 1991.

**Available on CANSIM: matrix 5431.**

Data for this industry will be released in *Textile Products Industries* (34-251, \$38).

For further information on this release, contact Nicole Charron (613-951-3510), Industry Division. ■

### Canvas and Related Products Industry

1992 Annual Survey of Manufactures

In 1992, the value of shipments of goods of own manufacture for the canvas and related products industry (SIC 1931) totalled \$140.0 million, down 3.3% from \$144.8 million in 1991.

**Available on CANSIM: matrix 5432.**

Data for this industry will be released in *Textile Products Industries* (34-251, \$38).

For further information on this release, contact Nicole Charron (613-951-3510), Industry Division. ■

## Contract Textile Dyeing and Finishing Industry

1992 Annual Survey of Manufactures

In 1992, the value of shipments of goods of own manufacture for the contract textile dyeing and finishing industry (SIC 1992) totalled \$269.4 million, down 3.9% from \$280.3 million in 1991.

**Available on CANSIM: matrix 5434.**

Data for this industry will be released in *Textile Products Industries* (34-251, \$38).

For further information on this release, contact Nicole Charron (613-951-3510), Industry Division. ■

## Household Products of Textile Materials Industry

1992 Annual Survey of Manufactures

In 1992, the value of shipments of goods of own manufacture for the household products of textile materials industry (SIC 1993) totalled \$581.0 million, down 4.5% from \$608.2 million in 1991.

**Available on CANSIM: matrix 5435.**

Data for this industry will be released in *Textile Products Industries* (34-251, \$38).

For further information on this release, contact Nicole Charron (613-951-3510), Industry Division. ■

## Other Commercial Printing Industries

1992 Annual Survey of Manufactures

In 1992, the value of shipments of goods of own manufacture for the other commercial printing industries (SIC 2819) totalled \$5,190.8 million, up 0.7% from \$5,156.6 million in 1991.

**Available on CANSIM: matrix 5498.**

Data for this industry will be released in *Printing, Publishing and Allied Industries* (36-251, \$38).

For further information on this release, contact Suzanne Pépin (613-951-3514), Industry Division. ■

## Platemaking, Typesetting and Bindery Industry

1992 Annual Survey of Manufactures

In 1992, the value of shipments of goods of own manufacture for the platemaking, typesetting and bindery industry (SIC 2821) totalled \$1,188.6 million, down 0.9% from \$1,199.4 million in 1991.

**Available on CANSIM: matrix 5499.**

Data for this industry will be released in *Printing, Publishing and Allied Industries* (36-251, \$38).

For further information on this release, contact Suzanne Pépin (613-951-3514), Industry Division. ■

## Other Stamped and Pressed Metal Products Industries

1992 Annual Survey of Manufactures

In 1992, the value of shipments of goods of own manufacture for the other stamped and pressed metal products industries (SIC 3049) totalled \$1,859.9 million, up 1.8% from \$1,827.3 million in 1991.

**Available on CANSIM: matrix 5526.**

Data for this industry will be released in *Fabricated Metal Products Industries* (41-251, \$38).

For further information on this release, contact Bruno Pépin (613-951-9837), Industry Division. ■

## Plastic Parts and Accessories for Motor Vehicles Industry

1992 Annual Survey of Manufactures

In 1992, the value of shipments of goods of own manufacture for plastic parts and accessories for motor vehicles industry (SIC 3256) totalled \$1,107.4 million, up 7.3% from \$1,032.1 million in 1991.

**Available on CANSIM: matrix 5560.**

Data for this industry will be released in *Transportation Equipment Industries* (42-251, \$38).

For further information on this release, contact Andy Shinnan (613-951-3515), Industry Division. ■

---

## Other Motor Vehicle Accessories, Parts and Assemblies Industries

1992 Annual Survey of Manufactures

In 1992, the value of shipments of goods of own manufacture for the other motor vehicle accessories, parts and assemblies industries (SIC 3259) totalled \$5,224.5 million, up 7.8% from \$4,844.9 million in 1991.

**Available on CANSIM: matrix 5562.**

Data for this industry will be released in *Transportation Equipment Industries* (42-251, \$38).

For further information on this release, contact Andy Shinnan (613-951-3515), Industry Division. ■

## Shipbuilding and Repair Industry

1992 Annual Survey of Manufactures

In 1992, the value of shipments of goods of own manufacture for the shipbuilding and repair industry (SIC 3271) totalled \$1,167.5 million, down 15.2% from \$1,376.5 million in 1991.

**Available on CANSIM: matrix 5564.**

Data for this industry will be released in *Transportation Equipment Industries* (42-251, \$38).

For further information on this release, contact Andy Shinnan (613-951-3515), Industry Division. ■

## Boatbuilding and Repair Industry

1992 Annual Survey of Manufactures

In 1992, the value of shipments of goods of own manufacture for the boatbuilding and repair industry (SIC 3281) totalled \$221.3 million, down 11.7% from \$250.6 million in 1991.

**Available on CANSIM: matrix 5565.**

Data for this industry will be released in *Transportation Equipment Industries* (42-251, \$38).

For further information on this release, contact Andy Shinnan (613-951-3515), Industry Division. ■

## Other Electrical Industrial Equipment Industries

1992 Annual Survey of Manufactures

In 1992, the value of shipments of goods of own manufacture for the other electrical industrial equipment industries (SIC 3379) totalled \$744.3 million, down 13.5% from \$860.5 million in 1991.

**Available on CANSIM: matrix 5582.**

Data for this industry will be released in *Electrical and Electronic Products Industries* (43-250, \$38).

For further information on this release, contact Laurie Vincent (613-951-3523), Industry Division. ■

## Other Electrical Products Industries

1992 Annual Survey of Manufactures

In 1992, the value of shipments of goods of own manufacture for the other electrical products industries not elsewhere classified (SIC 3399) totalled \$517.2 million, up 0.9% from \$512.6 million in 1991.

**Available on CANSIM: matrix 5586.**

Data for this industry will be released in *Electrical and Electronic Products Industries* (43-250, \$38).

For further information on this release, contact Laurie Vincent (613-951-3523), Industry Division. ■

## Other Chemical Products Industries

1992 Annual Survey of Manufactures

In 1992, the value of shipments of goods of own manufacture for the other chemical products industries not elsewhere classified (SIC 3799) totalled \$2,076.5 million, up 5.3% from \$1,972.1 million in 1991.

**Available on CANSIM: matrix 6882.**

Data for this industry will be released in *Chemical and Chemical Products Industries* (46-250, \$38).

For further information on this release, contact Raj Sehdev (613-951-3513), Industry Division. ■

## **Sporting Goods Industry**

1992 Annual Survey of Manufactures

In 1992, the value of shipments of goods of own manufacture for the sporting goods industry (SIC 3931) totalled \$702.5 million, up 3.9% from \$675.9 million in 1991.

**Available on CANSIM: matrix 6890.**

Data for this industry will be released in *Other Manufacturing Industries* (47-250, \$38).

For further information on this release, contact Suzanne Pépin (613-951-3514), Industry Division. ■

---

## PUBLICATIONS RELEASED

---

**Telephone Statistics, 1992.**

**Catalogue number 56-203**

(Canada: \$36; United States: US\$43;  
Other Countries: US\$50).

**Service Industries Service Bulletin: Automobile  
and Truck Rental and Leasing Industry,  
1989-1991.**

**Catalogue number 63-015**

(Canada: \$7.20/\$43; United States: US\$8.65/US\$52;  
Other Countries: US\$10/US\$60).

**Traveller Accommodation Statistics, 1989-1991.**

**Catalogue number 63-204**

(Canada: \$22; United States: US\$26;  
Other Countries: US\$31).

**Campus Bookstores, Academic Year 1992-93.**

**Catalogue number 63-219**

(Canada: \$22; United States: US\$26;  
Other Countries: US\$31).

**Quarterly Estimates of Trusteed Pension Funds,  
Third Quarter 1993.**

**Catalogue number 74-001**

(Canada: \$11/\$44; United States: US\$13.25/US\$53;  
Other Countries: US\$15.50/US\$62).

**Occupation, 1991 Census Technical Reports.**

**Catalogue number 92-339E**

(Canada: \$20; United States: US\$24;  
Other Countries: US\$28).

**Profile of Census Divisions and Subdivisions in  
Newfoundland—Part B, 1991 Census.**

**Catalogue number 95-302**

(Canada: \$70; United States: US\$84;  
Other Countries: US\$98).

**Profile of Census Divisions and Subdivisions in  
Prince Edward Island—Part B, 1991 Census.**

**Catalogue number 95-309**

(Canada: \$45; United States: US\$54;  
Other Countries: US\$63).

**Profile of Census Divisions and Subdivisions in  
Nova Scotia—Part B, 1991 Census.**

**Catalogue number 95-313**

(Canada: \$45; United States: US\$54;  
Other Countries: US\$63).

**Profile of Census Divisions and Subdivisions in  
New Brunswick—Part B, 1991 Census.**

**Catalogue number 95-320**

(Canada: \$60; United States: US\$72;  
Other Countries: US\$84).

**Profile of Census Divisions and Subdivisions in  
Quebec—Part B, 1991 Census.**

**Catalogue number 95-326**

(Canada: \$185; United States: US\$222;  
Other Countries: US\$259).  
**Available in a few days.**

**Profile of Census Divisions and Subdivisions in  
Ontario—Part B, 1991 Census.**

**Catalogue number 95-338**

(Canada: \$130; United States: US\$156;  
Other Countries: US\$182).  
**Available in a few days.**

**Profile of Census Divisions and Subdivisions in  
Manitoba—Part B, 1991 Census.**

**Catalogue number 95-359**

(Canada: \$60; United States: US\$72;  
Other Countries: US\$84).

**Profile of Census Divisions and Subdivisions in  
Saskatchewan—Part B, 1991 Census.**

**Catalogue number 95-366**

(Canada: \$125; United States: US\$150;  
Other Countries: US\$175).

**Profile of Census Divisions and Subdivisions in  
Alberta—Part B, 1991 Census.**

**Catalogue number 95-373**

(Canada: \$70; United States: US\$84;  
Other Countries: US\$98).

**Profile of Census Divisions and Subdivisions in  
British Columbia—Part B, 1991 Census.**

**Catalogue number 95-385**

(Canada: \$70; United States: US\$84;  
Other Countries: US\$98).

*(continued on page 15)*

**Profile of Census Divisions and Subdivisions in Yukon—Part B, 1991 Census.**  
**Catalogue number 95-396**  
 (Canada: \$35; United States: US\$42;  
 Other Countries: US\$49).

The paper used in this publication meets the minimum requirements of American National Standard for Information Sciences – Permanence of Paper for Printed Library Materials, ANSI Z39.48 – 1984.



**Profile of Census Divisions and Subdivisions in the Northwest Territories—Part B, 1991 Census.**  
**Catalogue number 95-398**  
 (Canada: \$35; United States: US\$42;  
 Other Countries: US\$49).

### How to Order Publications

Simplify your data search with *Statistics Canada Catalogue, 1993* (11-204E, \$13.95; United States: US\$17; Other Countries: US\$20). Its keyword index will guide you to statistics on Canada's social and economic activity.

**Order *The Daily* and other publications by phone:**

Please refer to the • Title • Catalogue Number • Volume Number • Issue Number • your VISA or MasterCard Number.

In Canada and the United States call:	<b>1-800-267-6677</b>
From other countries call:	<b>1-613-951-7277</b>
Or fax your order to us:	<b>1-613-951-1584</b>

**For address changes:** Please refer to your Customer Account Number.

**To order a publication by mail write:** Sales and Service, Marketing Division, Statistics Canada, Ottawa, K1A 0T6. Include a cheque or money order payable to Receiver General of Canada/Publications. Canadian customers add 7% GST.

**Statistics Canada Regional Reference Centres provide a full range of the Agency's products and services.** For the reference centre nearest you, check the blue pages of your telephone directory under Statistics Canada.

**Authorized agents and bookstores also carry Statistics Canada's catalogued publications.**

**The Daily**  
 Statistics Canada

Friday, September 16, 1993  
 For release at 9:00 a.m.

**MAJOR RELEASES**

- **Labour Force Survey, August 1993**  
 The unemployment rate fell 0.2 to 11.3 in August 1993. 2
- **Price Product Price Index, July 1993**  
 The Food Product Price Index rose 0.2% in July. The index also climbed in houses, fuel, apparel and, 1992, the footwear and apparel products from increased input costs by 0.6% in July 1993. 4
- **American Statistics of Education, 1992-94**  
 Shows 1992-94 spending on education by highest dollar has risen from 280.2 billion to an estimated 325.5 billion in 1992-94. The data represent from 1982-83 up to the previous version of a census. 6

**DATA AVAILABILITY ANNOUNCEMENTS**

Compendium Series: Data on Production and International Trade, July 1993  
 Short-Form Profile: Trade, Balance of Payments, 1993  
 Monthly Compendium: 1993 (Starting January 27, 1993)  
 Release: Compendium Statistics, June 1993  
 History of Canadian Statistics, July 1993  
 CMA and FMA, July 1993  
 Joint Industry/Productivity, July 1993  
 Canadian Retail Productivity, December 1992

**PUBLICATIONS RELEASED** 10

**MAJOR RELEASE DATES:** Week of September 13-17 11

Canada

### Statistics Canada's Official Release Bulletin

Catalogue 11-001E. (Canada: \$120; United States: US\$144; Other Countries: US\$168.)

Published each working day by the Communications Division, Statistics Canada, 10-M, R.H. Coats Bldg., Tunney's Pasture, Ottawa, Ontario K1A 0T6.

Editor: Tim Prichard (613-951-1103)  
 Editor in chief: Greg Thomson (613-951-1187)

Published by authority of the Minister responsible for Statistics Canada. © Minister of Industry, Science and Technology, 1994. All rights reserved. No part of this publication may be reproduced, stored in a retrieval system or transmitted in any form or by any means, electronic, mechanical, photocopying, recording or otherwise without prior written permission from Licence Services, Marketing Division, Statistics Canada, Ottawa, Ontario, Canada K1A 0T6.



---

## REGIONAL REFERENCE CENTRES

---

Statistics Canada's Regional Reference Centres offer a full range of the agency's products and services. Each reference centre is equipped with a library and a sales counter where users can consult or purchase publications, microcomputer and CD-ROM diskettes, microfiche, maps and more.

Each centre has facilities to retrieve information from CANSIM and E-STAT, Statistics Canada's computerized data retrieval systems. A telephone inquiry service is available with toll-free access for clients who are located outside local calling areas. Many other valuable services — from seminars to consultations — are also offered. Call or write your nearest Regional Reference Centre for more information.

### **Newfoundland and Labrador, Nova Scotia, Prince Edward Island and New Brunswick**

Advisory Services  
Statistics Canada  
North American Life Centre  
1770 Market Street  
Halifax, Nova Scotia  
B3J 3M3

Local calls: (902) 426-5331  
Toll free: 1-800-565-7192  
Fax: 1-902-426-9538

### **Québec**

Advisory Services  
Statistics Canada  
Suite 412, East Tower  
Guy Favreau Complex  
200 René Lévesque Blvd. W.  
Montréal, Québec  
H2Z 1X4

Local calls: (514) 283-5725  
Toll free: 1-800-361-2831  
Fax: 1-514-283-9350

### **National Capital Region**

Statistical Reference Centre (NCR)  
Statistics Canada  
Lobby, R.H. Coats Building  
Holland Avenue  
Tunney's Pasture  
Ottawa, Ontario  
K1A 0T6

If outside the local calling area, please dial the toll free number for your province.

Local calls: (613) 951-8116  
Fax: 1-613-951-0581

### **Ontario**

Advisory Services  
Statistics Canada  
10<sup>th</sup> Floor  
Arthur Meighen Building  
25 St. Clair Avenue East  
Toronto, Ontario  
M4T 1M4

Local calls: (416) 973-6586  
Toll free: 1-800-263-1136  
Fax: 1-416-973-7475

### **Manitoba**

Advisory Services  
Statistics Canada  
Suite 300, MacDonald Building  
344 Edmonton Street  
Winnipeg, Manitoba  
R3B 3L9

Local calls: (204) 983-4020  
Toll free: 1-800-661-7828  
Fax: 1-204-983-7543

### **Saskatchewan**

Advisory Services  
Statistics Canada  
Avord Tower, 9th Floor  
2002 Victoria Avenue  
Regina, Saskatchewan  
S4P 0R7

Local calls: (306) 780-5405  
Toll free: 1-800-667-7164  
Fax: 1-306-780-5403

### **Southern Alberta**

Advisory Services  
Statistics Canada  
First Street Plaza, Room 401  
138-4th Avenue Southeast  
Calgary, Alberta  
T2G 4Z6

Local calls: (403) 292-6717  
Toll free: 1-800-563-7828  
Fax: 1-403-292-4958

### **Alberta and the Northwest Territories**

Advisory Services  
Statistics Canada  
8<sup>th</sup> Floor, Park Square  
10001 Bellamy Hill  
Edmonton, Alberta  
T5J 3B6

Local calls: (403) 495-3027  
Toll free: 1-800-563-7828  
Fax: 1-403-495-5318

### **British Columbia and the Yukon**

Advisory Services  
Statistics Canada  
Sinclair Centre, Suite 300  
757 West Hastings Street  
Vancouver, B.C. V6C 3C9

Local calls: (604) 666-3691  
Toll free: 1-800-663-1551  
Fax: 1-604-666-4863

### **Telecommunications Device for the Hearing Impaired**

Toll free: 1-800-363-7629

---