



The Daily

Statistics Canada

Wednesday, July 6, 1994

For release at 8:30 a.m.

STATISTICS
CANADA

STATISTIQUE
CANADA

JUL 6 1994

LIBRARY
BIBLIOTHÈQUE

MAJOR RELEASE

- **Short-term expectations survey**

A new series of forecasts from a small group of economists is released today.

2

DATA AVAILABILITY ANNOUNCEMENTS

Oil pipeline transport, April 1994

4

Industrial chemicals and synthetic resins, May 1994

4

Specified domestic electrical appliances, May 1994

4

PUBLICATIONS RELEASED

5

REGIONAL REFERENCE CENTRES

6

Profiles of census tracts—part b

1991 Census

Another five census tract profiles from the 1991 Census are now available. Each publication provides data collected from a 20% sample of households on characteristics such as home language, ethnic origin, place of birth, education, religion, labour force activity, housing costs, and income.

Census tracts are presented in numerical order within each centre. Data for the component census subdivisions are also shown.

The area profile series publications released today are listed under "Publications released" on page 5 of today's *Daily*. To purchase any of these publications, see "How to order publications."

For further information on this release, contact your nearest Statistics Canada Regional Reference Centre.



Statistics
Canada

Statistique
Canada

Canada

MAJOR RELEASE

Short-term expectations survey

The increase in the consumer price index for June is forecast at 0.1%, with minimum and maximum values of -0.2% and +0.5%, respectively. For May, the mean forecast was overestimated at +0.3%, compared with an outcome of -0.2%.

The mean forecast of the unemployment rate for June is 10.7% (minimum 10.5%, maximum 10.9%). For May, the mean forecast was overestimated at 10.9%, compared to an outcome of 10.7%.

Merchandise exports for May are forecast to be \$17.4 billion, with a minimum of \$17.0 billion and a maximum of \$18.2 billion. For April, the mean forecast (\$16.3 billion) underestimated the outcome by \$1.0 billion. The forecast of imports for May was \$16.3 billion, with a minimum of \$15.9 billion and a maximum of \$17.0 billion. For April, the mean forecast (\$15.7 billion) slightly underestimated the outcome of \$16.1 billion.

Note to users

Since April 1990, Statistics Canada has canvassed every month a small group of economic analysts (an average of 20 participants) for a one-month-ahead forecast of key economic indicators.

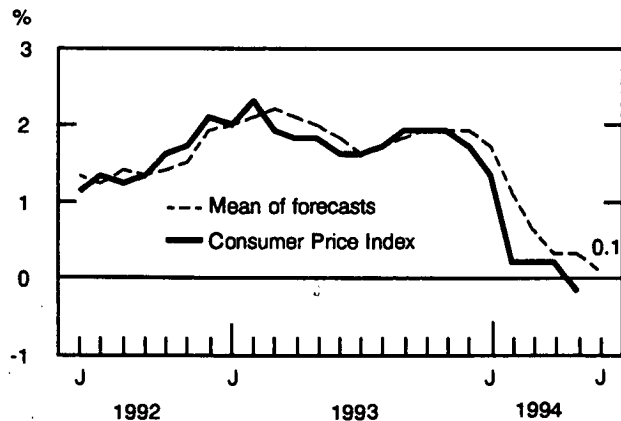
This month, participants forecast the year-over-year change in the consumer price index and in the unemployment rate for June 1994, the levels of merchandise exports and imports for May 1994, as well as the month-to-month change in real gross domestic product at factor cost for May 1994. The next release is scheduled for August 2nd.

Real gross domestic product at factor cost is forecast to have changed by +0.4% between April and May 1994, (minimum +0.1%, maximum +0.6%). Between March and April 1994, the mean forecast was the same as the outcome at +0.3%.

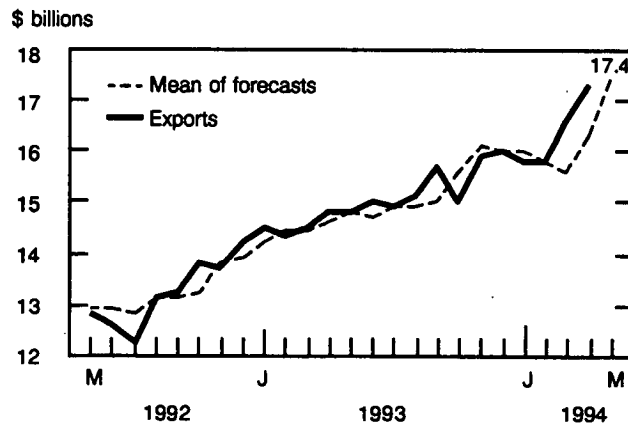
For a set of tables or further information on this release, contact Diane Lachapelle (613-951-0568). ☐

Forecast vs actual

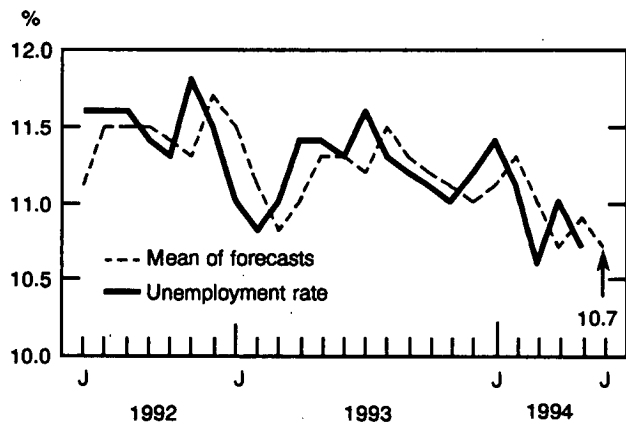
Consumer price index



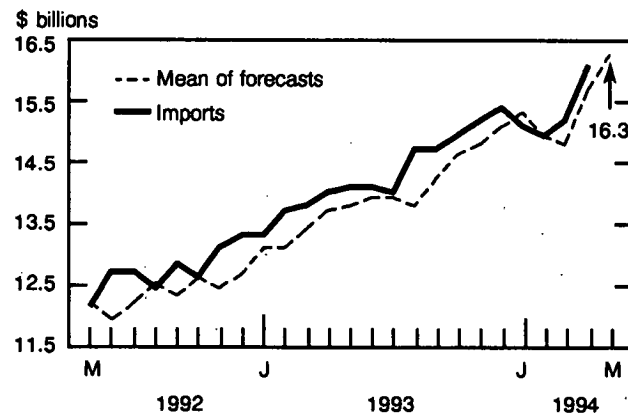
Merchandise exports



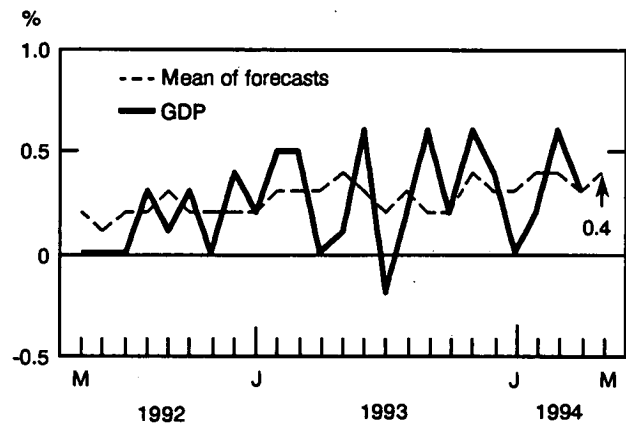
Unemployment rate



Merchandise imports



Gross domestic product



DATA AVAILABILITY ANNOUNCEMENTS

Oil pipeline transport

April 1994

In April, net receipts of crude oil and refined petroleum products into pipelines increased 6.7% from April 1993, to 16 088 475 cubic metres (m³). For January to April 1994, year-to-date receipts, at 66 121 266 m³, were up 7.7% from 1993.

Pipeline exports of crude oil increased 16.9% from April 1993, to 4 501 436 m³. Pipeline imports rose to 944 846 m³, an 18.2% increase from April 1993. Year-to-date exports to the end of April 1994 (17 918 600 m³) were up 14.3% from 1993, whereas year-to-date imports (3 564 517 m³) were down 0.4%.

April deliveries of crude oil by pipeline to Canadian refineries totalled 5 277 082 m³, a 16.2% increase from April 1993; April deliveries of liquid petroleum gases and refined petroleum products increased 41.2% to 490 877 m³.

Available on CANSIM: matrix 181.

The April 1994 issue of *Oil pipeline transport* (55-001, \$11/\$110) will be available next week. See "How to order publications".

For further information on this release, contact Gerard O'Connor (613-951-3562), Energy Section, Industry Division. ■

Industrial chemicals and synthetic resins

May 1994

Chemical firms produced 157 514 tonnes of polyethylene synthetic resins in May 1994, a 1.5% increase from 155 130^r (revised) tonnes in May 1993.

For January to May 1994, production totalled 751 636 tonnes, up 4.4% from 719 993^r tonnes a year earlier.

Data are also available on production of three other types of synthetic resins and 24 industrial chemicals for May 1993 and May 1994.

Available on CANSIM: matrix 951.

The May 1994 issue of *Industrial chemicals and synthetic resins* (46-002, \$6/\$60) will be available later.

For further information on this release, contact Raj Sehdev (613-951-3513), Industry Division. ■

Specified domestic electrical appliances

May 1994

Electrical appliance manufacturers shipped 50,589 kitchen appliances in May 1994.

For January to May 1994, year-to-date shipments of kitchen appliances amounted to 195,246 units.

The May 1994 issue of *Specified domestic electrical appliances* (43-003, \$6/\$60) will be available later.

For further information on this release, contact Laurie Vincent (613-951-3523), Industry Division. ■

The Daily
Statistics Canada

Friday, September 16, 1993
For release at 9:00 a.m.

MAJOR RELEASES

- **Labour Force Survey, August 1993**
The unemployment rate fell 0.2 to 13.5 in August 1993. 2
- **Export Product Price Index, July 1993**
The Export Product Price Index rose 0.2% in July. The index index continued its upward trend since July 1992, but remains well below its peak level of 100.0 in July 1990. 4
- **Advertiser Statistics of September, 1993-94**
Group 1993-94, advertising in television in Canada declined 1% from 1992-93 to 1993-94. The 5.4% increase from 1992-93 was the greatest increase in a decade. 6

DATA AVAILABILITY ANNOUNCEMENTS

Department Store Sales in November and December, 1993
Retail Prices, 1993, 1994, 1995, 1996, 1997, 1998, 1999, 2000, 2001, 2002, 2003, 2004, 2005, 2006, 2007, 2008, 2009, 2010, 2011, 2012, 2013, 2014, 2015, 2016, 2017, 2018, 2019, 2020, 2021, 2022, 2023, 2024, 2025, 2026, 2027, 2028, 2029, 2030, 2031, 2032, 2033, 2034, 2035, 2036, 2037, 2038, 2039, 2040, 2041, 2042, 2043, 2044, 2045, 2046, 2047, 2048, 2049, 2050, 2051, 2052, 2053, 2054, 2055, 2056, 2057, 2058, 2059, 2060, 2061, 2062, 2063, 2064, 2065, 2066, 2067, 2068, 2069, 2070, 2071, 2072, 2073, 2074, 2075, 2076, 2077, 2078, 2079, 2080, 2081, 2082, 2083, 2084, 2085, 2086, 2087, 2088, 2089, 2090, 2091, 2092, 2093, 2094, 2095, 2096, 2097, 2098, 2099, 2100, 2101, 2102, 2103, 2104, 2105, 2106, 2107, 2108, 2109, 2110, 2111, 2112, 2113, 2114, 2115, 2116, 2117, 2118, 2119, 2120, 2121, 2122, 2123, 2124, 2125, 2126, 2127, 2128, 2129, 2130, 2131, 2132, 2133, 2134, 2135, 2136, 2137, 2138, 2139, 2140, 2141, 2142, 2143, 2144, 2145, 2146, 2147, 2148, 2149, 2150, 2151, 2152, 2153, 2154, 2155, 2156, 2157, 2158, 2159, 2160, 2161, 2162, 2163, 2164, 2165, 2166, 2167, 2168, 2169, 2170, 2171, 2172, 2173, 2174, 2175, 2176, 2177, 2178, 2179, 2180, 2181, 2182, 2183, 2184, 2185, 2186, 2187, 2188, 2189, 2190, 2191, 2192, 2193, 2194, 2195, 2196, 2197, 2198, 2199, 2200, 2201, 2202, 2203, 2204, 2205, 2206, 2207, 2208, 2209, 2210, 2211, 2212, 2213, 2214, 2215, 2216, 2217, 2218, 2219, 2220, 2221, 2222, 2223, 2224, 2225, 2226, 2227, 2228, 2229, 2230, 2231, 2232, 2233, 2234, 2235, 2236, 2237, 2238, 2239, 2240, 2241, 2242, 2243, 2244, 2245, 2246, 2247, 2248, 2249, 2250, 2251, 2252, 2253, 2254, 2255, 2256, 2257, 2258, 2259, 2260, 2261, 2262, 2263, 2264, 2265, 2266, 2267, 2268, 2269, 2270, 2271, 2272, 2273, 2274, 2275, 2276, 2277, 2278, 2279, 2280, 2281, 2282, 2283, 2284, 2285, 2286, 2287, 2288, 2289, 2290, 2291, 2292, 2293, 2294, 2295, 2296, 2297, 2298, 2299, 2300, 2301, 2302, 2303, 2304, 2305, 2306, 2307, 2308, 2309, 2310, 2311, 2312, 2313, 2314, 2315, 2316, 2317, 2318, 2319, 2320, 2321, 2322, 2323, 2324, 2325, 2326, 2327, 2328, 2329, 2330, 2331, 2332, 2333, 2334, 2335, 2336, 2337, 2338, 2339, 2340, 2341, 2342, 2343, 2344, 2345, 2346, 2347, 2348, 2349, 2350, 2351, 2352, 2353, 2354, 2355, 2356, 2357, 2358, 2359, 2360, 2361, 2362, 2363, 2364, 2365, 2366, 2367, 2368, 2369, 2370, 2371, 2372, 2373, 2374, 2375, 2376, 2377, 2378, 2379, 2380, 2381, 2382, 2383, 2384, 2385, 2386, 2387, 2388, 2389, 2390, 2391, 2392, 2393, 2394, 2395, 2396, 2397, 2398, 2399, 2400, 2401, 2402, 2403, 2404, 2405, 2406, 2407, 2408, 2409, 2410, 2411, 2412, 2413, 2414, 2415, 2416, 2417, 2418, 2419, 2420, 2421, 2422, 2423, 2424, 2425, 2426, 2427, 2428, 2429, 2430, 2431, 2432, 2433, 2434, 2435, 2436, 2437, 2438, 2439, 2440, 2441, 2442, 2443, 2444, 2445, 2446, 2447, 2448, 2449, 2450, 2451, 2452, 2453, 2454, 2455, 2456, 2457, 2458, 2459, 2460, 2461, 2462, 2463, 2464, 2465, 2466, 2467, 2468, 2469, 2470, 2471, 2472, 2473, 2474, 2475, 2476, 2477, 2478, 2479, 2480, 2481, 2482, 2483, 2484, 2485, 2486, 2487, 2488, 2489, 2490, 2491, 2492, 2493, 2494, 2495, 2496, 2497, 2498, 2499, 2500, 2501, 2502, 2503, 2504, 2505, 2506, 2507, 2508, 2509, 2510, 2511, 2512, 2513, 2514, 2515, 2516, 2517, 2518, 2519, 2520, 2521, 2522, 2523, 2524, 2525, 2526, 2527, 2528, 2529, 2530, 2531, 2532, 2533, 2534, 2535, 2536, 2537, 2538, 2539, 2540, 2541, 2542, 2543, 2544, 2545, 2546, 2547, 2548, 2549, 2550, 2551, 2552, 2553, 2554, 2555, 2556, 2557, 2558, 2559, 2560, 2561, 2562, 2563, 2564, 2565, 2566, 2567, 2568, 2569, 2570, 2571, 2572, 2573, 2574, 2575, 2576, 2577, 2578, 2579, 2580, 2581, 2582, 2583, 2584, 2585, 2586, 2587, 2588, 2589, 2590, 2591, 2592, 2593, 2594, 2595, 2596, 2597, 2598, 2599, 2600, 2601, 2602, 2603, 2604, 2605, 2606, 2607, 2608, 2609, 2610, 2611, 2612, 2613, 2614, 2615, 2616, 2617, 2618, 2619, 2620, 2621, 2622, 2623, 2624, 2625, 2626, 2627, 2628, 2629, 2630, 2631, 2632, 2633, 2634, 2635, 2636, 2637, 2638, 2639, 2640, 2641, 2642, 2643, 2644, 2645, 2646, 2647, 2648, 2649, 2650, 2651, 2652, 2653, 2654, 2655, 2656, 2657, 2658, 2659, 2660, 2661, 2662, 2663, 2664, 2665, 2666, 2667, 2668, 2669, 2670, 2671, 2672, 2673, 2674, 2675, 2676, 2677, 2678, 2679, 2680, 2681, 2682, 2683, 2684, 2685, 2686, 2687, 2688, 2689, 2690, 2691, 2692, 2693, 2694, 2695, 2696, 2697, 2698, 2699, 2700, 2701, 2702, 2703, 2704, 2705, 2706, 2707, 2708, 2709, 2710, 2711, 2712, 2713, 2714, 2715, 2716, 2717, 2718, 2719, 2720, 2721, 2722, 2723, 2724, 2725, 2726, 2727, 2728, 2729, 2730, 2731, 2732, 2733, 2734, 2735, 2736, 2737, 2738, 2739, 2740, 2741, 2742, 2743, 2744, 2745, 2746, 2747, 2748, 2749, 2750, 2751, 2752, 2753, 2754, 2755, 2756, 2757, 2758, 2759, 2760, 2761, 2762, 2763, 2764, 2765, 2766, 2767, 2768, 2769, 2770, 2771, 2772, 2773, 2774, 2775, 2776, 2777, 2778, 2779, 2780, 2781, 2782, 2783, 2784, 2785, 2786, 2787, 2788, 2789, 2790, 2791, 2792, 2793, 2794, 2795, 2796, 2797, 2798, 2799, 2800, 2801, 2802, 2803, 2804, 2805, 2806, 2807, 2808, 2809, 2810, 2811, 2812, 2813, 2814, 2815, 2816, 2817, 2818, 2819, 2820, 2821, 2822, 2823, 2824, 2825, 2826, 2827, 2828, 2829, 2830, 2831, 2832, 2833, 2834, 2835, 2836, 2837, 2838, 2839, 2840, 2841, 2842, 2843, 2844, 2845, 2846, 2847, 2848, 2849, 2850, 2851, 2852, 2853, 2854, 2855, 2856, 2857, 2858, 2859, 2860, 2861, 2862, 2863, 2864, 2865, 2866, 2867, 2868, 2869, 2870, 2871, 2872, 2873, 2874, 2875, 2876, 2877, 2878, 2879, 2880, 2881, 2882, 2883, 2884, 2885, 2886, 2887, 2888, 2889, 2890, 2891, 2892, 2893, 2894, 2895, 2896, 2897, 2898, 2899, 2900, 2901, 2902, 2903, 2904, 2905, 2906, 2907, 2908, 2909, 2910, 2911, 2912, 2913, 2914, 2915, 2916, 2917, 2918, 2919, 2920, 2921, 2922, 2923, 2924, 2925, 2926, 2927, 2928, 2929, 2930, 2931, 2932, 2933, 2934, 2935, 2936, 2937, 2938, 2939, 2940, 2941, 2942, 2943, 2944, 2945, 2946, 2947, 2948, 2949, 2950, 2951, 2952, 2953, 2954, 2955, 2956, 2957, 2958, 2959, 2960, 2961, 2962, 2963, 2964, 2965, 2966, 2967, 2968, 2969, 2970, 2971, 2972, 2973, 2974, 2975, 2976, 2977, 2978, 2979, 2980, 2981, 2982, 2983, 2984, 2985, 2986, 2987, 2988, 2989, 2990, 2991, 2992, 2993, 2994, 2995, 2996, 2997, 2998, 2999, 3000, 3001, 3002, 3003, 3004, 3005, 3006, 3007, 3008, 3009, 3010, 3011, 3012, 3013, 3014, 3015, 3016, 3017, 3018, 3019, 3020, 3021, 3022, 3023, 3024, 3025, 3026, 3027, 3028, 3029, 3030, 3031, 3032, 3033, 3034, 3035, 3036, 3037, 3038, 3039, 3040, 3041, 3042, 3043, 3044, 3045, 3046, 3047, 3048, 3049, 3050, 3051, 3052, 3053, 3054, 3055, 3056, 3057, 3058, 3059, 3060, 3061, 3062, 3063, 3064, 3065, 3066, 3067, 3068, 3069, 3070, 3071, 3072, 3073, 3074, 3075, 3076, 3077, 3078, 3079, 3080, 3081, 3082, 3083, 3084, 3085, 3086, 3087, 3088, 3089, 3090, 3091, 3092, 3093, 3094, 3095, 3096, 3097, 3098, 3099, 3100, 3101, 3102, 3103, 3104, 3105, 3106, 3107, 3108, 3109, 3110, 3111, 3112, 3113, 3114, 3115, 3116, 3117, 3118, 3119, 3120, 3121, 3122, 3123, 3124, 3125, 3126, 3127, 3128, 3129, 3130, 3131, 3132, 3133, 3134, 3135, 3136, 3137, 3138, 3139, 3140, 3141, 3142, 3143, 3144, 3145, 3146, 3147, 3148, 3149, 3150, 3151, 3152, 3153, 3154, 3155, 3156, 3157, 3158, 3159, 3160, 3161, 3162, 3163, 3164, 3165, 3166, 3167, 3168, 3169, 3170, 3171, 3172, 3173, 3174, 3175, 3176, 3177, 3178, 3179, 3180, 3181, 3182, 3183, 3184, 3185, 3186, 3187, 3188, 3189, 3190, 3191, 3192, 3193, 3194, 3195, 3196, 3197, 3198, 3199, 3200, 3201, 3202, 3203, 3204, 3205, 3206, 3207, 3208, 3209, 3210, 3211, 3212, 3213, 3214, 3215, 3216, 3217, 3218, 3219, 3220, 3221, 3222, 3223, 3224, 3225, 3226, 3227, 3228, 3229, 3230, 3231, 3232, 3233, 3234, 3235, 3236, 3237, 3238, 3239, 3240, 3241, 3242, 3243, 3244, 3245, 3246, 3247, 3248, 3249, 3250, 3251, 3252, 3253, 3254, 3255, 3256, 3257, 3258, 3259, 3260, 3261, 3262, 3263, 3264, 3265, 3266, 3267, 3268, 3269, 3270, 3271, 3272, 3273, 3274, 3275, 3276, 3277, 3278, 3279, 3280, 3281, 3282, 3283, 3284, 3285, 3286, 3287, 3288, 3289, 3290, 3291, 3292, 3293, 3294, 3295, 3296, 3297, 3298, 3299, 3300, 3301, 3302, 3303, 3304, 3305, 3306, 3307, 3308, 3309, 3310, 3311, 3312, 3313, 3314, 3315, 3316, 3317, 3318, 3319, 3320, 3321, 3322, 3323, 3324, 3325, 3326, 3327, 3328, 3329, 3330, 3331, 3332, 3333, 3334, 3335, 3336, 3337, 3338, 3339, 3340, 3341, 3342, 3343, 3344, 3345, 3346, 3347, 3348, 3349, 3350, 3351, 3352, 3353, 3354, 3355, 3356, 3357, 3358, 3359, 3360, 3361, 3362, 3363, 3364, 3365, 3366, 3367, 3368, 3369, 3370, 3371, 3372, 3373, 3374, 3375, 3376, 3377, 3378, 3379, 3380, 3381, 3382, 3383, 3384, 3385, 3386, 3387, 3388, 3389, 3390, 3391, 3392, 3393, 3394, 3395, 3396, 3397, 3398, 3399, 3400, 3401, 3402, 3403, 3404, 3405, 3406, 3407, 3408, 3409, 3410, 3411, 3412, 3413, 3414, 3415, 3416, 3417, 3418, 3419, 3420, 3421, 3422, 3423, 3424, 3425, 3426, 3427, 3428, 3429, 3430, 3431, 3432, 3433, 3434, 3435, 3436, 3437, 3438, 3439, 3440, 3441, 3442, 3443, 3444, 3445, 3446, 3447, 3448, 3449, 3450, 3451, 3452, 3453, 3454, 3455, 3456, 3457, 3458, 3459, 3460, 3461, 3462, 3463, 3464, 3465, 3466, 3467, 3468, 3469, 3470, 3471, 3472, 3473, 3474, 3475, 3476, 3477, 3478, 3479, 3480, 3481, 3482, 3483, 3484, 3485, 3486, 3487, 3488, 3489, 3490, 3491, 3492, 3493, 3494, 3495, 3496, 3497, 3498, 3499, 3500, 3501, 3502, 3503, 3504, 3505, 3506, 3507, 3508, 3509, 3510, 3511, 3512, 3513, 3514, 3515, 3516, 3517, 3518, 3519, 3520, 3521, 3522, 3523, 3524, 3525, 3526, 3527, 3528, 3529, 3530, 3531, 3532, 3533, 3534, 3535, 3536, 3537, 3538, 3539, 3540, 3541, 3542, 3543, 3544, 3545, 3546, 3547, 3548, 3549, 3550, 3551, 3552, 3553, 3554, 3555, 3556, 3557, 3558, 3559, 3560, 3561, 3562, 3563, 3564, 3565, 3566, 3567, 3568, 3569, 3570, 3571, 3572, 3573, 3574, 3575, 3576, 3577, 3578, 3579, 3580, 3581, 3582, 3583, 3584, 3585, 3586, 3587, 3588, 3589, 3590, 3591, 3592, 3593, 3594, 3595, 3596, 3597, 3598, 3599, 3600, 3601, 3602, 3603, 3604, 3605, 3606, 3607, 3608, 3609, 3610, 3611, 3612, 3613, 3614, 3615, 3616, 3617, 3618, 3619, 3620, 3621, 3622, 3623, 3624, 3625, 3626, 3627, 3628, 3629, 3630, 3631, 3632, 3633, 3634, 3635, 3636, 3637, 3638, 3639, 3640, 3641, 3642, 3643, 3644, 3645, 3646, 3647, 3648, 3649, 3650, 3651, 3652, 3653, 3654, 3655, 3656, 3657, 3658, 3659, 3660, 3661, 3662, 3663, 3664, 3665, 3666, 3667, 3668, 3669, 3670, 3671, 3672, 3673, 3674, 3675, 3676, 3677, 3678, 3679, 3680, 3681, 3682, 3683, 3684, 3685, 3686, 3687, 3688, 3689, 3690, 3691, 3692, 3693, 3694, 3695, 3696, 3697, 3698, 3699, 3700, 3701, 3702, 3703, 3704, 3705, 3706, 3707, 3708, 3709, 3710, 3711, 3712, 3713, 3714, 3715, 3716, 3717, 3718, 3719, 3720, 3721, 3722, 3723, 3724, 3725, 3726, 3727, 3728, 3729, 3730, 3731, 373

PUBLICATIONS RELEASED

Crude petroleum and natural gas production, March 1994.

Catalogue number 26-006

(Canada: \$11/\$110; United States: US\$14/US\$132; other countries: US\$16/US\$154).

Monthly survey of manufacturing, April 1994.

Catalogue number 31-001

(Canada: \$19/\$190; United States: US\$23/US\$228; other countries: US\$27/US\$266).

Profile of census tracts in Hamilton—part B, 1991 Census.

Catalogue number 95-342

(Canada: \$40; United States: US\$48; other countries: US\$56).

Profile of census tracts in London, Sarnia, Clearwater and Windsor—part B, 1991 Census.

Catalogue number 95-347

(Canada: \$50; United States: US\$60; other countries: US\$70).

Profile of census tracts in Lethbridge and Red Deer—part B, 1991 Census.

Catalogue number 95-381

(Canada: \$35; United States: US\$42; other countries: US\$49).

Profile of census tracts in Kamloops, Kelowna and Prince George—part B, 1991 Census.

Catalogue number 95-387

(Canada: \$45; United States: US\$54; other countries: US\$63).

Profile of census tracts in Victoria—part B, 1991 Census.

Catalogue number 95-392

(Canada: \$35; United States: US\$42; other countries: US\$49).

The paper used in this publication meets the minimum requirements of American National Standard for Information Sciences – Permanence of Paper for Printed Library Materials, ANSI Z39.48 – 1984.



How to order publications

Simplify your data search with *Statistics Canada catalogue, 1993* (11-204E, \$13.95; United States: US\$17; other countries: US\$20). Its keyword index will guide you to statistics on Canada's social and economic activity.

Order *The Daily* and other publications by phone:

Please refer to the • Title • Catalogue number • Volume number • Issue number • Your VISA or MasterCard number.

In Canada and the United States call:

1-800-267-6677

From other countries call:

1-613-951-7277

Or fax your order to us:

1-613-951-1584

For address changes: Please refer to your customer account number.

To order a publication by mail write: Sales and Service, Marketing Division, Statistics Canada, Ottawa, K1A 0T6. Include a cheque or money order payable to Receiver General of Canada/Publications. Canadian customers add 7% GST.

Statistics Canada Regional Reference Centres provide a full range of the Agency's products and services.

For the reference centre nearest you, check the blue pages of your telephone directory under Statistics Canada.

Authorized agents and bookstores also carry Statistics Canada's catalogued publications.



1010168236

The Daily, July 6, 1994

REGIONAL REFERENCE CENTRES

Statistics Canada's Regional Reference Centres offer a full range of the agency's products and services. Each reference centre is equipped with a library and a sales counter where users can consult or purchase publications, microcomputer and CD-ROM diskettes, microfiche, maps and more.

Each centre has facilities to retrieve information from CANSIM and E-STAT, Statistics Canada's computerized data retrieval systems. A telephone inquiry service is available with toll-free access for clients who are located outside local calling areas. Many other valuable services—from seminars to consultations—are also offered. Call or write your nearest Regional Reference Centre for more information.

Newfoundland and Labrador, Nova Scotia, Prince Edward Island and New Brunswick

Advisory Services
Statistics Canada
North American Life Centre
1770 Market Street
Halifax, Nova Scotia
B3J 3M3

Local calls: (902) 426-5331
Toll free: 1-800-565-7192
Fax: 1-902-426-9538

Quebec

Advisory Services
Statistics Canada
Suite 412, East Tower
Guy Favreau Complex
200 René Lévesque Blvd. W.
Montréal, Québec
H2Z 1X4

Local calls: (514) 283-5725
Toll free: 1-800-361-2831
Fax: 1-514-283-9350

National Capital Region

Statistical Reference Centre (NCR)
Statistics Canada
Lobby, R.H. Coats Building
Holland Avenue
Tunney's Pasture
Ottawa, Ontario
K1A 0T6

If outside the local calling area, please dial the toll free number for your province.

Local calls: (613) 951-8116
Fax: 1-613-951-0581

Ontario

Advisory Services
Statistics Canada
10th Floor
Arthur Meighen Building
25 St. Clair Avenue East
Toronto, Ontario
M4T 1M4

Local calls: (416) 973-6586
Toll free: 1-800-263-1136
Fax: 1-416-973-7475

Manitoba

Advisory Services
Statistics Canada
Suite 300, MacDonald Building
344 Edmonton Street
Winnipeg, Manitoba
R3B 3L9

Local calls: (204) 983-4020
Toll free: 1-800-661-7828
Fax: 1-204-983-7543

Saskatchewan

Advisory Services
Statistics Canada
Avord Tower, 9th Floor
2002 Victoria Avenue
Regina, Saskatchewan
S4P 0R7

Local calls: (306) 780-5405
Toll free: 1-800-667-7164
Fax: 1-306-780-5403

Southern Alberta

Advisory Services
Statistics Canada
First Street Plaza, Room 401
138-4th Avenue Southeast
Calgary, Alberta
T2G 4Z6

Local calls: (403) 292-6717
Toll free: 1-800-563-7828
Fax: 1-403-292-4958

Alberta and the Northwest Territories

Advisory Services
Statistics Canada
8th Floor, Park Square
10001 Bellamy Hill
Edmonton, Alberta
T5J 3B6

Local calls: (403) 495-3027
Toll free: 1-800-563-7828
Fax: 1-403-495-5318

British Columbia and the Yukon

Advisory Services
Statistics Canada
Sinclair Centre, Suite 300
757 West Hastings Street
Vancouver, B.C. V6C 3C9

Local calls: (604) 666-3691
Toll free: 1-800-663-1551
Fax: 1-604-666-4863

Telecommunications Device for the Hearing Impaired

Toll free: 1-800-363-7629