



# The Daily

Statistics Canada

Friday, March 8, 1996  
For release at 8:30 a.m.

CANADA CANADA

MAR 8 1996

LIBRARY  
BIBLIOTHEQUE

## MAJOR RELEASES

- **Labour force survey, February 1996** 2  
In February, the number of persons unemployed was virtually unchanged as expansion of the labour force kept pace with the growth in jobs. The unemployment rate was unchanged at 9.6%.

## OTHER RELEASES

Railway carloadings, January 1996	6
Cereals and oilseeds review, December 1995	6
Pack of processed carrots, 1995	6
Annual survey of manufactures, 1994	6

## PUBLICATIONS RELEASED 8

## RELEASE DATES: March 11-15 9



Statistics  
Canada

Statistique  
Canada

Canada

## MAJOR RELEASES

### Labour force survey

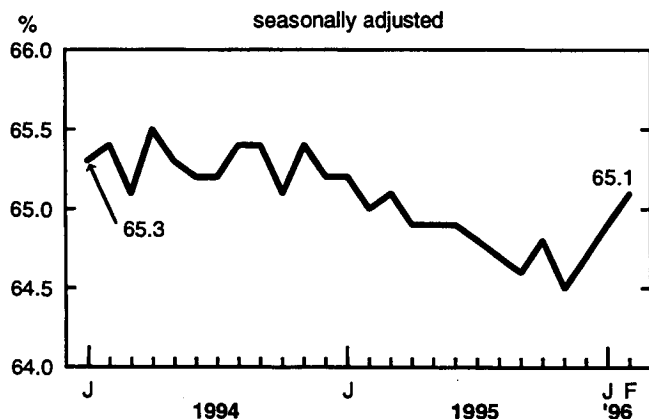
February 1996

Employment grew by 44,000 in February, continuing the upward trend observed since July 1995, with job gains totalling 170,000. This upward trend follows a pause in employment growth in the first half of 1995. In February, the number of persons unemployed was virtually unchanged as expansion of the labour force kept pace with the growth in jobs. This left the unemployment rate unchanged at 9.6%. The unemployment rate has hovered around this level since year-end 1994.

#### Employment growth lured people into the labour market

A rising participation rate is commonly viewed as an indicator of improved job opportunities. In February, the participation rate rose 0.2 percentage points for a third consecutive month. Both youths and adults contributed to this gain. The last time an increase of this magnitude was observed over a three-month period was in 1984. After moving upward during the 1980s, the participation rate has declined fairly consistently since the beginning of the 1990s.

Labour force participation rate



### Adults and youths shared the job gains

Employment among adults aged 25 and over stuck to its upward trend, adding 22,000 jobs in February. This brought the gains for adults since July 1995 to 164,000 jobs. Since employment growth resumed last July, adults have accounted for practically all of the gains.

Employment among youths aged 15 to 24 also rose (+22,000) following little change in December and January. Youth employment was 20,000 jobs below its February 1995 level, after fluctuating monthly throughout 1995.

#### Gains in both full-time and part-time employment

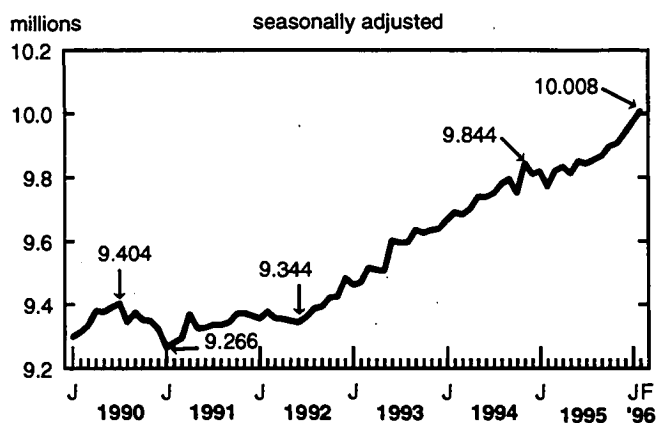
An increase in full-time employment in February (+25,000) brought the gain over the past three months to 82,000, more than offsetting the sharp loss in November. These recent gains brought full-time employment to 40,000 jobs above the December 1994 level, the last month when full-time employment showed an upward trend.

Part-time employment also increased in February (+19,000), bringing the gains over the past four months to 82,000. Growth in part-time employment has been on an upward trend since the first quarter of 1995, with the gains since March totalling 143,000.

#### Employment growth in services-producing industries

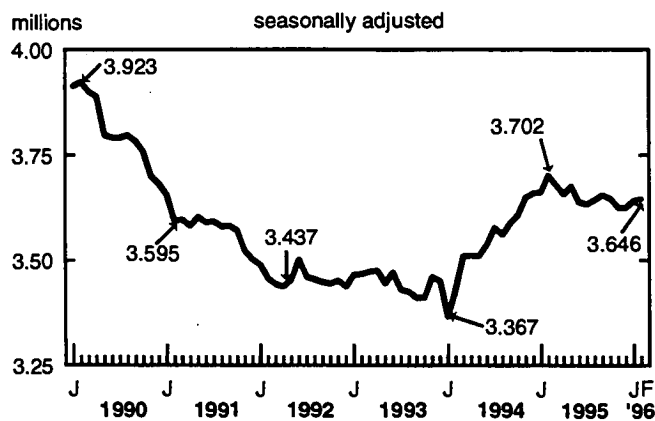
In February, employment in the services-producing industries stayed on its upward trend, gaining 33,000 jobs. Since July 1995, the job growth in these industries has totalled 163,000 (+1.7%). Over the same period, hours worked in the services-producing industries have increased at a slightly slower pace (+1.4%). The employment gains since July were mostly in trade (+73,000) and community, business and personal services (+95,000).

### Employment in the services-producing industries



Since July 1995, employment in the goods-producing industries has shown little change. Gains in agriculture have been offset by small losses in other goods-producing industries. In February, employment declined in other primary industries, bringing the job losses since October to 19,000.

### Employment in the goods-producing industries



### Provincial labour markets

After showing little change in the last four months of 1995, employment in Newfoundland fell by 4,000 in both January and February. Employment in the province was 10,000 (-5.0%) below its February 1995 level. There was also no job growth in February in the other Atlantic provinces. But over the last year, employment has grown by 7.0% in Prince Edward

Island and 2.6% in Nova Scotia. Employment in New Brunswick was at about the same level as a year earlier.

Employment was little changed in February in Quebec, where job gains since July 1995 reached 63,000 (+2.0%). These gains contrast with the first six months of 1995, when employment did not grow. The recent gains have been in the services-producing industries.

In Ontario, employment climbed by a considerable 31,000 jobs, the largest monthly increase in two years. After having declined by 29,000 in the first eight months of 1995, employment in the province has rebounded by 76,000 jobs. The gains over the period have been in manufacturing and trade.

In February, employment increased by 7,000 jobs in both Manitoba and Alberta. The gain in Manitoba followed a loss of 10,000 jobs over the previous five months; the increase in Alberta brought the gains since November to 18,000 jobs. Employment in Saskatchewan, which has shown small monthly fluctuations during the past year, was down 0.9% compared with February 1995.

In British Columbia, the employment level changed little in February. Over the last eight months, however, it has grown by 1.7%.

### LFS information line

Get the commentary and key survey estimates as soon as they are released at 7:00 a.m. on release day. Dial 613-951-9448, then follow the step-by-step instructions for selecting recorded information.

**Available on CANSIM: matrices 2074, 2075, 2078-2107 and table 00799999.**

The Labour Force Survey is available at 7:00 a.m. on release day on the Internet at <http://www.statcan.ca> under "What's new?".

For a summary, *Labour force information, for the week ended February 17, 1996* (71-001-PPB, \$10/\$100) is available today, as is a facsimile version (71-001-PFB, \$300 annually). The February 1996 issue of *The labour force* (71-001-XPB, \$23/\$230) will be available the third week of March. See "How to order publications".

The next release of the Labour Force Survey will be on April 4.

For further information on this release, contact Doug Drew (613-951-4720), Jean-Marc Lévesque (613-951-2301) or the LFS information line (613-951-9448), Household Surveys Division. □

Labour force characteristics for both sexes, aged 15 and over

	Jan. 1996	Feb. 1996	Jan. 1996 to Feb. 1996	Jan. 1996	Feb. 1996	Jan. 1996 to Feb. 1996
seasonally adjusted						
Labour force			Participation rate			
	'000	% change	%	change		
Canada	15,052	15,105	0.4	64.9	65.1	0.2
Newfoundland	240	239	-0.4	53.0	52.8	-0.2
Prince Edward Island	71	71	0.0	67.4	67.6	0.2
Nova Scotia	441	441	0.0	60.1	60.1	0.0
New Brunswick	354	351	-0.8	59.1	58.6	-0.5
Quebec	3,652	3,671	0.5	62.5	62.8	0.3
Ontario	5,774	5,812	0.7	65.7	66.1	0.4
Manitoba	563	566	0.5	66.1	66.4	0.3
Saskatchewan	493	493	0.0	65.6	65.6	0.0
Alberta	1,504	1,514	0.7	72.1	72.5	0.4
British Columbia	1,967	1,952	-0.8	65.8	65.2	-0.6
Employment			Employment rate			
	'000	% change	%	change		
Canada	13,614	13,658	0.3	58.7	58.8	0.1
Newfoundland	193	189	-2.1	42.6	41.7	-0.9
Prince Edward Island	61	61	0.0	58.0	58.0	0.0
Nova Scotia	391	389	-0.5	53.3	53.0	-0.3
New Brunswick	313	311	-0.6	52.3	51.9	-0.4
Quebec	3,253	3,257	0.1	55.7	55.7	0.0
Ontario	5,261	5,292	0.6	59.9	60.2	0.3
Manitoba	516	523	1.4	60.6	61.4	0.8
Saskatchewan	458	458	0.0	61.0	61.0	0.0
Alberta	1,389	1,396	0.5	66.6	66.8	0.2
British Columbia	1,786	1,784	-0.1	59.8	59.6	-0.2
Unemployment			Unemployment rate			
	'000	% change	%	change		
Canada	1,438	1,447	0.6	9.6	9.6	0.0
Newfoundland	47	50	6.4	19.6	20.9	1.3
Prince Edward Island	10	10	0.0	13.9	14.1	0.2
Nova Scotia	50	52	4.0	11.3	11.8	0.5
New Brunswick	41	40	-2.4	11.6	11.4	-0.2
Quebec	399	414	3.8	10.9	11.3	0.4
Ontario	513	520	1.4	8.9	8.9	0.0
Manitoba	47	43	-8.5	8.3	7.6	-0.7
Saskatchewan	35	35	0.0	7.1	7.1	0.0
Alberta	115	118	2.6	7.6	7.8	0.2
British Columbia	181	168	-7.2	9.2	8.6	-0.6

Note: Provincial estimates may differ from the national totals due to independent seasonal adjustment.

Labour force characteristics for both sexes, aged 15 and over

	Feb. 1995	Feb. 1996	Feb. 1995 to Feb. 1996	Feb. 1995	Feb. 1996	Feb. 1995 to Feb. 1996
unadjusted						
Labour force			Participation rate			
	'000	% change	%		change	
Canada	14,605	14,831	1.5	63.7	63.9	0.2
Newfoundland	228	222	-2.5	50.0	48.9	-1.1
Prince Edward Island	64	68	5.6	61.4	64.0	2.6
Nova Scotia	414	422	1.9	56.8	57.5	0.7
New Brunswick	336	330	-1.6	56.3	55.2	-1.1
Quebec	3,541	3,606	1.8	61.2	61.7	0.5
Ontario	5,646	5,730	1.5	65.1	65.2	0.1
Manitoba	554	558	0.8	65.4	65.6	0.2
Saskatchewan	486	485	-0.3	65.0	64.6	-0.4
Alberta	1,454	1,487	2.3	70.7	71.2	0.5
British Columbia	1,882	1,921	2.1	64.4	64.1	-0.3
Employment			Employment rate			
	'000	% change	%		change	
Canada	13,091	13,291	1.5	57.1	57.2	0.1
Newfoundland	185	174	-5.8	40.6	38.5	-2.1
Prince Edward Island	52	55	7.3	49.5	52.4	2.9
Nova Scotia	360	368	2.3	49.3	50.1	0.8
New Brunswick	291	290	-0.4	48.8	48.4	-0.4
Quebec	3,095	3,156	2.0	53.5	54.0	0.5
Ontario	5,118	5,181	1.2	59.0	58.9	-0.1
Manitoba	507	511	0.8	59.9	60.0	0.1
Saskatchewan	450	446	-0.9	60.2	59.5	-0.7
Alberta	1,337	1,367	2.3	65.0	65.5	0.5
British Columbia	1,696	1,742	2.7	58.0	58.1	0.1
Unemployment			Unemployment rate			
	'000	% change	%		change	
Canada	1,514	1,539	1.7	10.4	10.4	0.0
Newfoundland	43	47	11.7	18.7	21.4	2.7
Prince Edward Island	13	12	-1.6	19.5	18.2	-1.3
Nova Scotia	55	54	-1.2	13.2	12.8	-0.4
New Brunswick	44	40	-8.9	13.2	12.3	-0.9
Quebec	446	450	0.9	12.6	12.5	-0.1
Ontario	529	549	3.8	9.4	9.6	0.2
Manitoba	47	47	1.1	8.4	8.4	0.0
Saskatchewan	36	39	7.8	7.4	8.0	0.6
Alberta	116	120	3.1	8.0	8.1	0.1
British Columbia	186	180	-3.3	9.9	9.4	-0.5

---

## OTHER RELEASES

---

### **Railway carloadings**

January 1996

Carload freight (excluding intermodal traffic) loaded in Canada totalled 18.1 million tonnes in January, an 8.8% decrease from January 1995. The carriers received an additional 1.6 million tonnes from U.S. connections during January 1996. Intermodal (piggyback) traffic in January totalled 1.1 million tonnes, a 15.2% drop from January 1995. Total traffic (carload freight and intermodal) fell 9.2% over the same period.

The year-to-date data for 1995 have been revised.

**Available on CANSIM: matrix 1431.**

The January 1996 issue of *Railway carloadings* (52-001-XPB, \$10/\$100) will be released shortly. See "How to order publications".

For further information on this release, contact Angus MacLean (613-951-2528, fax: 613-951-0579), Surface Transport Unit, Transportation Division. ■

### **Cereals and oilseeds review**

December 1995

Grain prices declined in Canadian and U.S. markets in January as speculators liquidated their positions. The February 1 report on stocks of grain at December 31, 1995 (see *The Daily*, February 1, 1996) confirmed analysts' expectations: oilseed stocks have increased compared with December 1994, while feed grain stocks have decreased. The U.S. Department of Agriculture's January report on supply and demand showed tighter-than-expected corn stocks, and high prices have not helped to ration the demand. These two stories are discussed in the January 1996 situation report contained in the December 1995 issue of *Cereals and oilseeds review*.

The December 1995 issue of *Cereals and oilseeds review* (22-007-XPB, \$15/\$144) will be available shortly. See "How to order publications".

For further information on this release, contact Jeannine Fleury (613-951-3859) or Karen Gray (204-983-2856), Grain Marketing Unit, Agriculture Division. ■

### **Pack of processed carrots**

1995

Data for 1995 on the pack of processed carrots are now available.

*Pack of processed carrots, 1995* (32-239-XPB, \$14) will be available shortly. See: "How to order publications".

For further information on this release, contact Peter Zylstra (613-951-3511), Industry Division. ■

### **Annual survey of manufactures**

1994

The Annual Survey of Manufactures provides information on over 200 different industries. Principal statistics for each industry will be released as they become available. Data for the industries listed in the table below are now available.

**Available on CANSIM: matrices 5380, 5383, 5397, 5514, 5517, 5518, 5538, 5557, 5562, 5564, 5577, 5582, 6855, 6864, 6870 and 6878.**

Data for the industries listed in the table will appear in *Food industries* (32-250-XPB, \$38), *Primary metal industries* (41-250-XPB, \$38), *Fabricated metal products industries* (41-251-XPB, \$38), *Transportation equipment industries* (42-251-XPB, \$38), *Electrical and electronic products industries* (43-250-XPB, \$38), *Non-metallic mineral products industries* (44-250-XPB, \$38) and *Chemical and chemical products industries* (46-250-XPB, \$38). These publications will be released at a later date. See "How to order publications". □

# Value of shipments

	1993	1994	1993 to 1994 %	Catalogue number	Contact (613)	
	\$ millions		change			
<b>Industry (SIC)</b>						
Meat and meat products (except poultry) (1011)	9,215.5	9,530.4	3.4	32-250-XPB	P. Zylstra	951-3511
Canned and preserved fruit and vegetables (1031)	2,476.9	2,416.5	-2.4	32-250-XPB	P. Zylstra	951-3511
Dry pasta products (1092)	180.7	250.9	38.8	32-250-XPB	P. Zylstra	951-3511
Other rolled, cast and extruded non-ferrous metal products (2999)	778.7	970.8	24.7	41-250-XPB	A. Shinnan	951-3515
Metal tanks (heavy gauge) (3021)	347.8	426.8	22.7	41-251-XPB	D. Higgins	951-9837
Plate work (3022)	171.0	186.7	9.2	41-251-XPB	D. Higgins	951-9837
Metal valve (3092)	337.6	348.7	3.3	41-251-XPB	D. Higgins	951-9837
Motor vehicle stampings (3253)	2,823.5	3,294.9	16.7	42-251-XPB	A. Shinnan	951-3515
Other motor vehicle accessories, parts and assemblies (3259)	5,549.4	6,192.4	11.6	42-251-XPB	A. Shinnan	951-3515
Shipbuilding and repair (3271)	1,185.6	976.3	-17.7	42-251-XPB	A. Shinnan	951-3515
Electronic computing and peripheral equipment (3361)	3,241.7	5,106.7	57.5	43-250-XPB	L. Vincent	951-3523
Other electrical industrial equipment (3379)	790.9	808.9	2.3	43-250-XPB	L. Vincent	951-3523
Ready-mix concrete (3551)	1,562.4	1,636.3	4.7	44-250-XPB	S. O'Brien	951-3514
Other non-metallic mineral products not elsewhere classified (3599)	258.7	267.2	3.3	44-250-XPB	S. O'Brien	951-3514
Industrial inorganic chemicals not elsewhere classified (3711)	2,494.6	2,673.7	7.2	46-250-XPB	B. Meyer	951-3528
Soap and cleaning compounds (3761)	1,601.6	1,585.6	-1.0	46-250-XPB	B. Meyer	951-3528

## PUBLICATIONS RELEASED

**Electric lamps (light bulbs and tubes),**  
January 1996

**Catalogue number 43-009-XPB**

(Canada: \$6/\$60; United States: US\$8/US\$72; other countries: US\$9/US\$84).

**Asphalt roofing, January 1996**

**Catalogue number 45-001-XPB**

(Canada: \$6/\$60; United States: US\$8/US\$72; other countries: US\$9/US\$84).

**Surface and marine transport service bulletin, vol. 12, no. 2**

**Catalogue number 50-002-XPB**

(Canada: \$11/\$80; United States: US\$14/US\$96; other countries: US\$16/US\$112).

The paper used in this publication meets the minimum requirements of American National Standard for Information Sciences - Permanence of Paper for Printed Library Materials, ANSI Z39.48 - 1984.



Published by authority of the Minister responsible for Statistics Canada. © Minister of Industry, 1996. Citation in newsprint, magazine, radio, and television reporting is permitted subject to the requirement that Statistics Canada is acknowledged as the source. Any other reproduction is permitted subject to the requirement that Statistics Canada is acknowledged as the source on all copies as follows: Statistics Canada, *The Daily*, catalogue 11-001E, along with date and page references.

### How to order publications

Simplify your data search with *Statistics Canada Catalogue*, 1994 (11-204E, \$15; United States: US\$18; other countries: US\$21). Its keyword index will guide you to statistics on Canada's social and economic activity.

**Order *The Daily* and other publications by phone:**

Please refer to the • Title • Catalogue number • Volume number • Issue number • Your VISA or MasterCard number.

In Canada and the United States call:

**1-800-267-6677**

From other countries call:

**1-613-951-7277**

Or fax your order to us:

**1-613-951-1584**

**For address changes:** Please refer to your customer account number.

**To order a publication by mail write:** Sales and Service, Marketing Division, Statistics Canada, Ottawa, K1A 0T6.

Include a cheque or money order payable to Receiver General of Canada/Publications. Canadian customers add 7% GST.

**Statistics Canada Regional Reference Centres provide a full range of the Agency's products and services.**

For the reference centre nearest you, check the blue pages or your telephone directory under Statistics Canada.

**Authorized agents and bookstores also carry Statistics Canada's catalogued publications.**



---

## RELEASE DATES

---

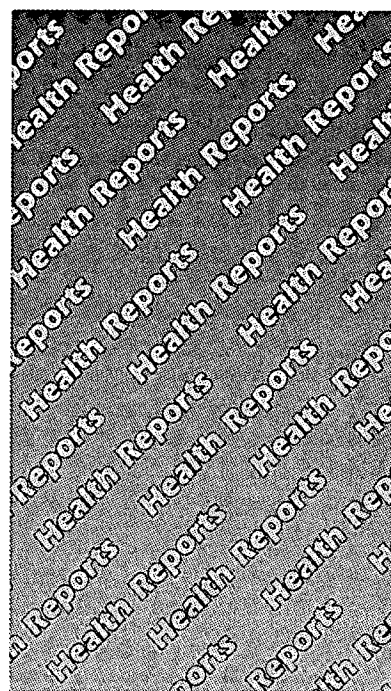
**March 11-15**

(Release dates are subject to change.)

---

Release date	Title	Reference period
12	Perspectives of labour and income	Spring 1996
12	New motor vehicle sales	January 1996
12	New housing price index	January 1996
13	Canadian social trends	Spring 1996
14	Consumer price index	February 1996
14	Composite index	February 1996
15	Monthly survey of manufacturing	January 1996
15	Travel between Canada and other countries	January 1996

---



STATISTICS CANADA LIBRARY  
BIBLIOTHEQUE STATISTIQUE CANADA



1010209573

# Available Journal of Health-related Information

In today's world, being informed about Canadians' health and Canadian healthcare is less of an option and more like an obligation. How accurate and up-to-date your information is, however, remains at your discretion ....

**F**ollow the lead of hundreds of professionals in health care, research, insurance and policymaking who look to *Health Reports* for reliable facts and figures. Issued four times a year, this periodical combines Statistics Canada's stringent standards of data accuracy and timeliness with practical features. Each volume contains:

- highlights of newly released data
- news of recent publications and updates
- crisp and incisive articles
- information on specialized tabulations and custom data

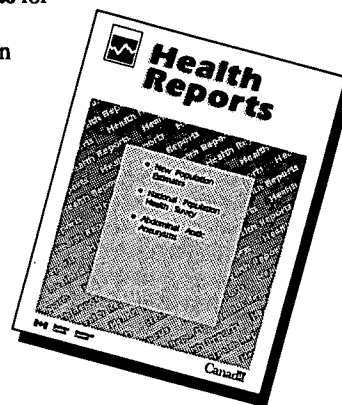
Concise text, instructive charts and easy-to-read tables make for a balanced blend of essential data and straightforward analysis. Each issue of *Health Reports* is written by the analysts of the Canadian Centre for Health Information with original contributions from outside specialists. This imparts a particularly candid flavour and results in a stimulating approach to a wide range of topics like:

- women and cardiovascular disease
- health care for seniors
- recent findings on cancer, heart disease and tuberculosis
- mortality by occupation
- health risks and social status

With its broad scope and solid facts, *Health Reports* is quickly gaining recognition as an authority on health developments and concerns. It's an essential resource if you plan, establish, deliver or evaluate programs and projects - if you have a vested interest in health-related issues.

Don't just be informed! Know that your information is both current and sound. Get *Health Reports* for leading-edge information on Canadians' health and Canadian healthcare. Subscribe today.

*Health Reports* (catalogue number 82-0030XPB) is \$112 (plus GST and applicable PST) annually in Canada, US\$136 in the United States and US\$160 in other countries.



**To order, write:** Statistics Canada  
Operations and Integration Division  
Circulation Management  
120 Parkdale Ave.  
Ottawa, Ontario K1A 0T6

or contact the nearest Statistics Canada Reference Centre listed in this publication. If more convenient, fax your order to 1-613-951-1584 or call toll-free 1-800-267-6677 and use your VISA or MasterCard. Via Internet: [order@statcan.ca](mailto:order@statcan.ca)