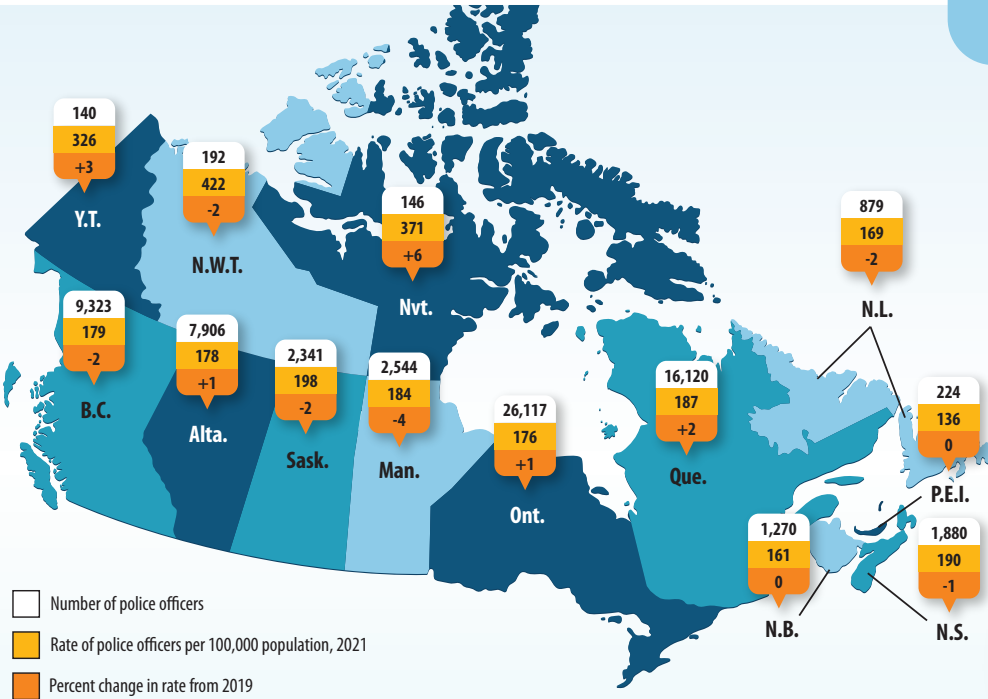


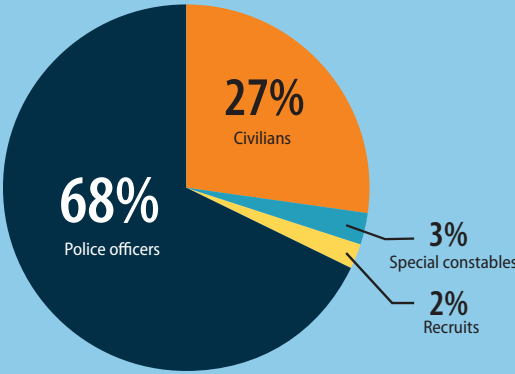
POLICE PERSONNEL AND EXPENDITURES IN CANADA, 2021

NUMBER OF POLICE OFFICERS BY PROVINCE AND TERRITORY

As of May 15, 2021, there were **70,131** police officers in Canada, **1,386 more** than in 2019. This represents a rate of police strength of **183** officers per 100,000 population, and is **stable** from two years earlier.¹



POLICE PERSONNEL



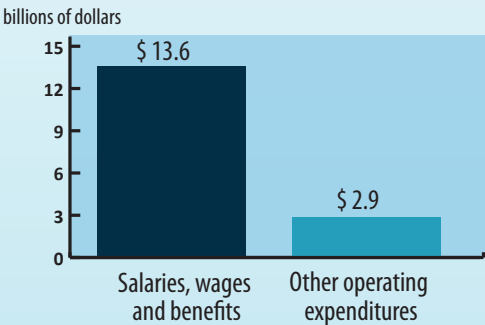
Top 5 measures put in place by police services in response to the pandemic

- 1 Adjustment of training methods (88%)
- 2 Change in the workplace layout (77%)
- 3 Change to how police services deal with suspects in cells (76%)
- 4 Change of work schedule (70%)
- 5 Teleworking (65%)

Across Canada, police services received 11.8 million calls for service

POLICE OPERATING EXPENDITURES

In 2020/2021, operating expenditures for policing totalled **\$16.5 billion**, up 5% from 2018/2019.



INDIGENOUS AND VISIBLE MINORITY POLICE OFFICERS²

8% of police officers were members of a population group designated as a visible minority

4% of police officers were Indigenous



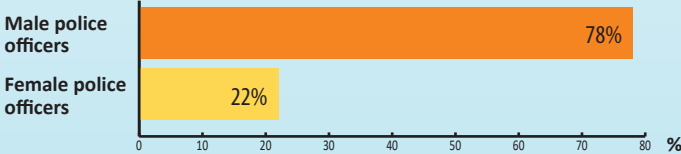
Close to **\$33 million** in additional costs related to the COVID-19 pandemic were spent in 2020/2021 to adequately equip policing personnel.



Just over 4 in 10 police services reported that **20% or more** of their personnel had been absent from work for at least one day at some point in 2020/2021 due to the COVID-19 pandemic.



WOMEN IN POLICING



- In 2021, there were **454 more** female police officers than in 2019.
- **18%** of commissioned officers and **20%** of non-commissioned officers were women.
- Women accounted for **70%** of civilian positions in police services.
- **33%** of special constables and **31%** of recruits were women.

1. Canada includes personnel from the Royal Canadian Mounted Police operation and corporate headquarters, training academy depot division and forensic labs. They are not represented on the map.
2. Data are collected from police services through self-identification by personnel.
Note: Data on police personnel, women in policing, visible minorities, and Indigenous people are based on a "snapshot date" of May 15, 2021. COVID-19 data refer to the period from April 1, 2020 to March 31, 2021. The other data on this infographic represent the calendar year ending December 31, 2020 (or March 31, 2021 as some police services operate on a fiscal year basis). Percentages may not add up due to rounding. Despite the Police Administration Survey being an annual survey, collection for the 2020 cycle was cancelled due to the pandemic. Therefore, the 2021 cycle data are compared to 2019 cycle data.
Source: Statistics Canada, Canadian Centre for Justice and Community Safety Statistics, Police Administration Survey, 2021.
© Her Majesty the Queen in Right of Canada, as represented by the Minister of Industry, 2022