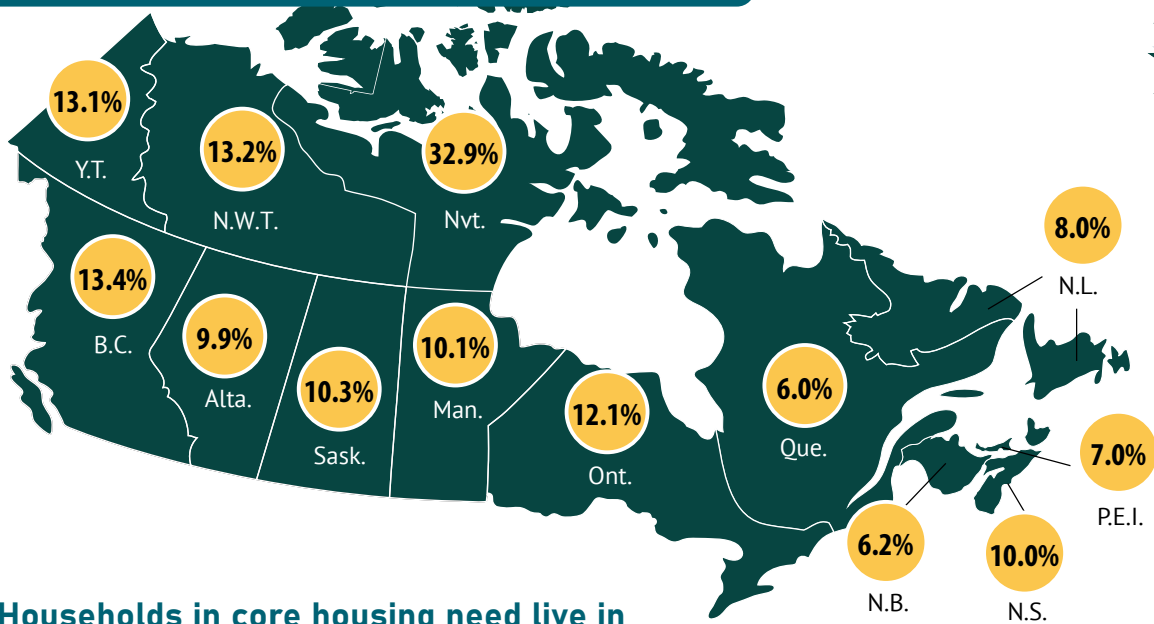




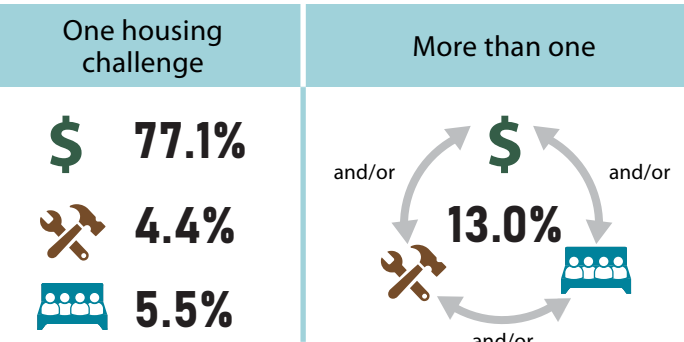
Core housing need in Canada

In 2021, 1 in 10 households were in core housing need

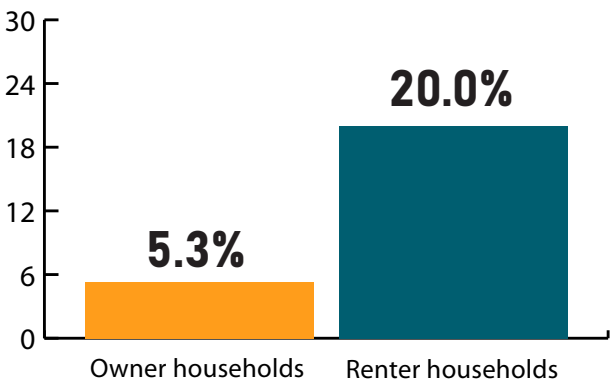


Households in core housing need live in an unsuitable, inadequate or unaffordable dwelling and cannot afford alternative housing in their community.

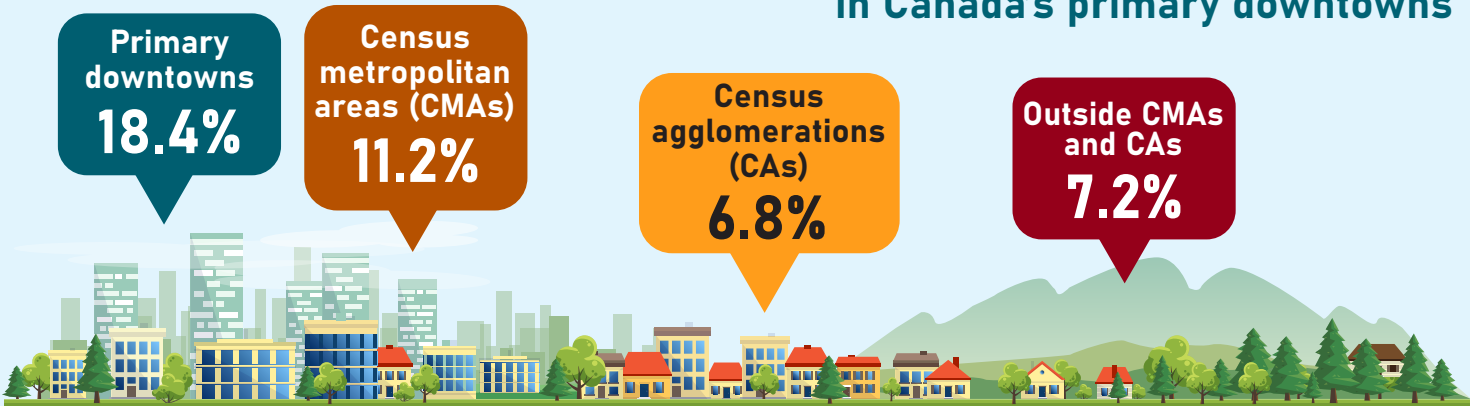
More than 1 in 10 households in core housing need face more than one housing challenge



Renters are more likely than owners to be in core housing need



Core housing need rates are highest in Canada's primary downtowns



- Legend:**
- Unaffordable housing:** A household that spends more than 30% of its income on shelter cost.
 - Inadequate housing:** A household that lives in a dwelling in need of major repairs.
 - Unsuitable housing:** A household that does not have enough bedrooms according to the National Occupancy Standard.

Core housing need: Core housing need refers to whether a private household's housing falls below at least one of the indicator thresholds for housing adequacy, affordability or suitability, and would have to spend 30% or more of its total before-tax income to pay the median rent of alternative local housing that is acceptable (attains all three housing indicator thresholds).

Source: Statistics Canada, Census of Population, 2021.
ISBN: 978-0-660-45408-5 | Catalogue number: 11-627-M

© His Majesty the King in Right of Canada, as represented by the Minister of Industry, 2022