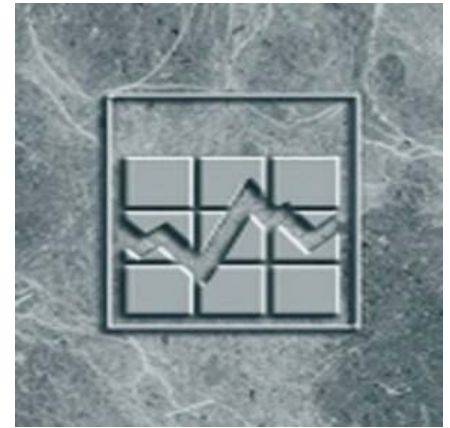


Catalogue no. 75F0002M  
ISSN 1707-2840  
ISBN 978-0-660-41736-3

## Income Research Paper Series

# Canadian Income Survey: Population rebasing, 2012 to 2019



Release date: March 23, 2022



Statistics  
Canada

Statistique  
Canada

Canada

---

## How to obtain more information

For information about this product or the wide range of services and data available from Statistics Canada, visit our website, [www.statcan.gc.ca](http://www.statcan.gc.ca).

You can also contact us by

**Email at** [infostats@statcan.gc.ca](mailto:infostats@statcan.gc.ca)

**Telephone**, from Monday to Friday, 8:30 a.m. to 4:30 p.m., at the following numbers:

- Statistical Information Service 1-800-263-1136
- National telecommunications device for the hearing impaired 1-800-363-7629
- Fax line 1-514-283-9350

## Standards of service to the public

Statistics Canada is committed to serving its clients in a prompt, reliable and courteous manner. To this end, Statistics Canada has developed standards of service that its employees observe. To obtain a copy of these service standards, please contact Statistics Canada toll-free at 1-800-263-1136. The service standards are also published on [www.statcan.gc.ca](http://www.statcan.gc.ca) under "Contact us" > "[Standards of service to the public](#)."

## Note of appreciation

Canada owes the success of its statistical system to a long-standing partnership between Statistics Canada, the citizens of Canada, its businesses, governments and other institutions. Accurate and timely statistical information could not be produced without their continued co-operation and goodwill.

Published by authority of the Minister responsible for Statistics Canada

© Her Majesty the Queen in Right of Canada as represented by the Minister of Industry, 2022

All rights reserved. Use of this publication is governed by the Statistics Canada [Open Licence Agreement](#).

An [HTML version](#) is also available.

*Cette publication est aussi disponible en français.*

---

## Table of contents

<b>Abstract</b> .....	<b>4</b>
<b>1 Introduction</b> .....	<b>4</b>
<b>2 Geographic boundary changes</b> .....	<b>5</b>
<b>3 Impact on population counts</b> .....	<b>5</b>
3.1 Provincial .....	5
3.2 Household sizes .....	6
3.3 Economic family sizes .....	6
<b>4 Impact on survey estimates</b> .....	<b>6</b>
4.1 Population estimates.....	7
4.2 Income estimates .....	7
4.3 Poverty and low Income.....	10
<b>5 References</b> .....	<b>12</b>
<b>6 Charts</b> .....	<b>12</b>
<b>7 Tables</b> .....	<b>17</b>

# Canadian Income Survey Population: Rebasing, 2012 to 2019

## Abstract

Periodically, income statistics are updated to reflect the most recent population estimates derived after the census. Accordingly, with the release of the 2020 data from the Canadian Income Survey (CIS), Statistics Canada has revised estimates for 2012 to 2019 using totals from population estimates based on the 2016 Census. This paper presents a comparison between revised and unrevised estimates for key income series, and describes other modifications made to CIS variables.

## 1 Introduction

The Canadian Income Survey (CIS) was developed to provide information on the income and income sources of Canadians, with their individual and household characteristics. The CIS began to publish income estimates for the 2012 reference year, and reports on many of the same statistics as its predecessors,<sup>1</sup> allowing for a relatively long time series going back to 1976. In addition to its long time series, its periodicity and continuity of income concepts makes the CIS an important source for income data.

The CIS is a cross-sectional sample survey. It consists of a short questionnaire which is asked of a sub-sample of the Labour Force Survey (LFS). In addition to income concepts, it gathers information on a variety of other topics, such as labour market activity, school attendance, food security, shelter costs, disability, among others. Similar to the process employed by the LFS,<sup>2</sup> the CIS periodically undergoes a revision process called, “population rebasing”. When the latest Census information becomes available, surveys can improve the representativeness of their samples by adjusting their survey weights. After reweighting to the latest totals from populations estimates based on the most recent census, income estimates are of better quality and the various estimates from the survey and from external sources are more comparable (Tremblay, 2005). Adjusting the weights is done by using the provincial counts for different demographic groups (e.g., individuals by age group and gender, economic families by size and households by size), population counts for six Census Metropolitan Areas (Montreal, Toronto, Winnipeg, Calgary, Edmonton and Vancouver), and distribution of individuals by wage class based on administrative tax data.

Previous to the 2020 CIS release, 2012 to 2019 CIS estimates were based on population estimates derived from the 2011 Census of Population. With the release of 2020 data, these CIS estimates have been adjusted to reflect the population estimates based on the 2016 Census and its coverage analysis.<sup>3</sup> Overall, the total Canadian population fell slightly following the revision, while there were relatively larger revisions to the population counts based on economic family and household sizes. These new population estimates were used to recalculate the CIS weights back to 2012.

In addition to the revisions to the survey weights, geographical boundaries have also been updated. Census metropolitan areas (CMAs), economic regions (ERs) and census agglomerations (CAs) have been revised to reflect the 2016 Census boundaries. Geography variables were revised back to 2016.

The industry and occupation classifications have also been updated. The CIS now uses the North American Industry Classification System (NAICS) 2017 V3.0 and the National Occupational Classification (NOC) 2016 V1.3. No revisions were required for the occupation variables, while industry variables were revised back to 2012.

This paper presents a summary of the changes to national and provincial key estimates produced by CIS for the revised years. In Section 2, it briefly describes the geographic boundary changes. Section 3 discusses the impact of the rebasing on population counts for individuals, households and economic families. Section 4 deals with the corresponding impact on the main survey estimates (e.g., family type, income, low income and poverty estimates). Lastly, tables and charts comparing revised and unrevised estimates by province are provided for reference.

---

1. The Canadian income estimates are based on data from the following surveys: the Survey of Consumer Finances (SCF) from 1976 to 1992, a combination of the SCF and the Survey of Labour and Income Dynamics (SLID) from 1993 to 1997, the SLID from 1998 to 2011 and the Canadian Income Survey (CIS) beginning in 2012.  
2. For more information please see [Improvements to the Labour Force Survey \(LFS\): The 2021 Revisions of the Labour Force Survey \(LFS\)](#).  
3. Please see [Coverage Technical Report, Census of Population, 2016](#) for more information.

## 2 Geographic boundary changes

Changes to the Standard Geographical Classification (SGC) introduced in conjunction with the 2016 Census resulted in the modification of boundaries for some of the sub-provincial areas such as census metropolitan areas (CMA), economic regions (ER), and census agglomerations (CA).

Two CAs became CMAs: Belleville, Ontario; and Lethbridge, Alberta. As well, 11 existing CMAs had boundary modifications between the 2011 SGC and the 2016 SGC. These are: Moncton and Saint John (New Brunswick); Saguenay, Québec, Montréal (Quebec) and Ottawa-Gatineau (Quebec part); Ottawa-Gatineau (Ontario part), Kitchener-Cambridge-Waterloo and Greater Sudbury (Ontario); and Regina and Saskatoon (Saskatchewan).

The most significant change to the existing CMA boundaries was that the Montréal CMA now includes the CA of Saint-Jean-sur-Richelieu.

As a result of the move to the 2016 SGC, there were small boundary changes for two ERs: South Central and Southeast in Manitoba.

CIS geography variables were revised for the reference years 2016 to 2019.

## 3 Impact on population counts

Using the population estimates based on the 2016 Census produced by Statistics Canada's Centre for Demography, the CIS control totals for reference years 2012 to 2019 were revised. Overall, at the Canada level, the population estimates were revised downward or remained unchanged for all years (Table 3.1). The largest difference between the revised and unrevised population count occurred in 2015 (down 0.5%), followed by more modest decreases in 2014 and 2016 (both down 0.3%).

### 3.1 Provincial

At the provincial level, British Columbia experienced the largest differences between revised and unrevised population estimates, with increases ranging from 0.8% in 2012 to 3.3% in 2018. Newfoundland and Labrador (0.5%, on average), New Brunswick (1.1%, on average) and Manitoba (0.4%, on average) also had their population estimates revised upwards over the revision period. Conversely, the largest decreases between unrevised and revised population counts were for Alberta, where population estimates were down 1.9% in both 2015 and 2016 (down 1.4%, on average). Quebec and Ontario also had their population estimates revised downwards, with decreases of 0.8% and 0.5% respectively, on average, over the revision period.

**Table 3.1**  
Percentage change between revised and unrevised population estimates, Canada and provinces, 2012 to 2019

	2012	2013	2014	2015	2016	2017	2018	2019
	percentage change (%)							
Canada	-0.1	-0.2	-0.3	-0.5	-0.3	-0.1	0.0	-0.1
Newfoundland and Labrador	-0.2	0.1	0.6	0.7	0.5	0.4	0.6	1.0
Prince Edward Island	-0.8	-1.2	-1.4	-1.2	-0.2	0.5	0.7	0.4
Nova Scotia	-0.2	-0.4	-0.6	-0.8	-0.5	-0.3	0.0	0.0
New Brunswick	0.3	0.6	0.8	1.0	1.3	1.4	1.6	1.6
Quebec	-0.5	-0.7	-1.0	-1.3	-1.2	-0.9	-0.5	-0.6
Ontario	-0.2	-0.4	-0.5	-0.6	-0.5	-0.4	-0.5	-0.7
Manitoba	0.1	0.0	-0.1	0.1	0.6	0.7	0.9	0.9
Saskatchewan	0.0	-0.2	-0.5	-0.7	-0.3	-0.2	0.2	0.4
Alberta	-0.6	-0.8	-1.3	-1.9	-1.9	-1.7	-1.6	-1.7
British Columbia	0.8	1.4	2.1	2.2	2.5	2.9	3.3	3.2

Source: Statistics Canada, Centre for Demography. Custom tabulation.

### 3.2 Household sizes

In terms of household size, both the smallest household size (i.e., one person households) and largest household size (i.e., three or more person households) had similar upward revisions, averaging about 1.8% and 1.9%, respectively, over the revision period (Table 3.2). In contrast, the number of two-person households was revised downward, with relatively larger decreases ranging from 1.5% in 2012 to 5.8% in 2019. Over the revision period, the number of two person households was revised downwards by 4.2%, on average.

**Table 3.2**  
Percentage change between the revised and unrevised number of households by household size, Canada, 2012 to 2019

	2012	2013	2014	2015	2016	2017	2018	2019
	percentage change (%)							
Households with 1 person	0.4	0.8	1.0	1.2	1.8	2.9	3.2	3.2
Households with 2 persons	-1.5	-2.4	-3.4	-4.6	-5.1	-5.1	-5.3	-5.8
Households with 3 or more persons	0.6	1.1	1.5	1.9	2.2	2.7	2.7	2.4

Source: Statistics Canada, Centre for Demography. Custom tabulation.

### 3.3 Economic family sizes

A similar trend was observed in the revisions to the number of economic families. The number of unattached individuals (i.e., persons not in an economic family) and largest family size (i.e., economic families with 3 or more persons) had upward revisions averaging around 2.8% and 1.5%, respectively, over the entire revision period (Table 3.3). Unattached individuals experienced the largest upward annual revisions, with 4.8% for both 2018 and 2019. Again, similar to the revisions to the number of households, the number of economic families with two persons was revised downward. On average, over the revision period, this family size was revised downward by about 4.0%, with 2019 having the largest downward annual revision at 5.8%.

**Table 3.3**  
Percentage change between the revised and unrevised number of economic families by economic family size, Canada, 2012 to 2019

	2012	2013	2014	2015	2016	2017	2018	2019
	percentage change (%)							
Persons not in an economic family	0.7	1.2	1.6	1.8	2.8	4.3	4.8	4.8
Economic families with 2 persons	-1.4	-2.2	-3.1	-4.3	-4.8	-5.0	-5.3	-5.8
Economic families with 3 or more persons	0.5	1.0	1.3	1.5	1.7	2.0	2.0	1.7

Source: Statistics Canada, Centre for Demography. Custom tabulation.

## 4 Impact on survey estimates

Since the survey weights in CIS are calibrated to population estimates, updates to population control totals will have an impact on CIS survey estimates. Consequentially, the CIS estimates for the full period from 2012 to 2019 have been revised. In this section, impacts on population estimates by economic family type, on income estimates as well as on poverty and low-income estimates will be described. Since the CIS estimates are based on a probability sample, unrevised (2011 Census-based) and revised (2016 Census-based) estimates, as well as the differences between them are all subject to sampling error. Differences statistically significant at a 95% level of confidence have been identified. Finally, to simplify the presentation of tables, this analysis will focus on three representative years over the revision period: 2013, 2016 and 2019.

## 4.1 Population estimates

At the Canada level, most of the differences between the revised and unrevised population estimates are statistically significant. In general, the larger economic family types tended to experience smaller changes between the revised and unrevised data (Table 4.1). Additionally, larger differences occurred in the most recent reference years, which are further from the previous Census year. Comparing the population revisions for the two broader categories, “economic families” and “persons not in an economic family”, the estimated number of persons living in an economic family had downward changes (largest downward revision was 1.0% in 2019), while the number of persons not in an economic family had relatively larger upward revisions (largest upward revision was 4.8% in 2019).

Within the “economic families” category, downward population revisions were largely driven by couples, both senior and non-senior (down 6.7% and 6.8% in 2019, respectively). For persons not in an economic family, all categories were revised upward. Although a relatively small category, senior men not in an economic family had the largest upward revisions, peaking at 9.4% in 2019.

**Table 4.1**  
**Comparison of revised and unrevised population estimates by economic family type, Canada, 2013, 2016 and 2019**

	2013			2016			2019		
	Unrevised	Revised	Change	Unrevised	Revised	Change	Unrevised	Revised	Change
	('000)		%	('000)		%	('000)		%
Economic families and persons not in an economic family	34,367	34,286	-0.2*	35,436	35,322	-0.3*	36,858	36,831	-0.1*
Economic families	28,998	28,852	-0.5*	29,848	29,577	-0.9*	31,004	30,696	-1.0*
Senior families	3,794	3,740	-1.4*	4,102	3,965	-3.3*	4,610	4,426	-4.0*
Senior couples	2,729	2,664	-2.4*	3,023	2,890	-4.4*	3,303	3,082	-6.7*
Other senior families	1,064	1,076	1.1	1,078	1,075	-0.3	1,307	1,344	2.8*
Non-senior families	25,204	25,112	-0.4*	25,746	25,611	-0.5*	26,394	26,270	-0.5*
Couples	4,517	4,413	-2.3*	4,685	4,434	-5.4*	4,841	4,512	-6.8*
Couples with children	12,330	12,370	0.3*	12,563	12,697	1.1*	12,808	12,910	0.8*
Couples with other relatives	3,834	3,809	-0.7*	4,011	4,006	-0.1	4,106	4,157	1.2
Lone-parent families	1,696	1,741	2.7*	1,756	1,794	2.2*	1,667	1,677	0.6
Male lone-parent families	319	326	2.2	319	334	4.7	343	355	3.5
Female lone-parent families	1,377	1,415	2.8*	1,436	1,460	1.7*	1,324	1,322	-0.2
Other non-senior families	2,827	2,778	-1.7*	2,731	2,679	-1.9*	2,973	3,013	1.3
Persons not in an economic family	5,369	5,434	1.2*	5,588	5,745	2.8*	5,854	6,135	4.8*
Seniors not in an economic family	1,445	1,460	1.0*	1,560	1,608	3.1*	1,847	1,944	5.3*
Senior males not in an economic family	457	468	2.4*	497	525	5.6*	627	686	9.4*
Senior females not in an economic family	988	992	0.4*	1,062	1,083	2.0*	1,220	1,258	3.1*
Non-seniors not in an economic family	3,924	3,974	1.3*	4,028	4,137	2.7*	4,006	4,191	4.6*
Non-senior males not in an economic family	2,236	2,257	0.9*	2,266	2,319	2.3*	2,194	2,289	4.3*
Non-senior females not in an economic family	1,688	1,717	1.7*	1,762	1,818	3.2*	1,812	1,902	5.0*

\* denotes changes that are statistically significant at the 95% confidence level

Source: Statistics Canada, Canadian Income Survey. Table 11-10-0190-01.

At the provincial level, overall, British Columbia had the largest upward revisions (up 3.2% in 2019), mostly driven by non-seniors not in an economic family (up 12.1% in 2019).<sup>4</sup> In Alberta, which had the largest downward revisions (down 1.7% in 2019), non-senior couples and non-seniors not in an economic family contributed the most to the downward revisions (down 14.2% and 6.7% in 2019, respectively). In general, population estimates for those living in an economic family tended to have smaller changes than population estimates for persons not in an economic family, although there are a few exceptions. For example, senior and non-senior couples tended to have relatively large revisions in many provinces.

## 4.2 Income estimates

At the Canada level, overall, the median CIS income estimates were either revised downward or remained relatively unchanged (Table 4.2). In 2019, median income tax had the largest downward revision at 2.6%, while median total income (down 1.7%), after-tax income (down 1.6%) and market income (down 1.9%) all had similar average downward revisions.

4. For more information, please see Tables 7.1 to 7.10.

For the broad category of economic families, income estimates were in general revised upwards in 2016, with the exception of government transfers, while they were little changed in 2019. For persons not living in an economic family, most estimates were relatively unchanged in 2013 and 2016, but there tended to be upward revisions in 2019.

**Table 4.2**  
**Comparison of revised and unrevised income estimates, Canada, 2013, 2016 and 2019**

	2013			2016			2019		
	Unrevised	Revised	Change	Unrevised	Revised	Change	Unrevised	Revised	Change
	2019 constant dollars		%	2019 constant dollars		%	2019 constant dollars		%
<b>Median market income</b>									
Economic families and persons not in an economic family	55,500	55,400	-0.2	55,400	55,100	-0.5*	58,300	57,200	-1.9*
Economic families	80,900	81,100	0.2	81,400	82,100	0.9*	85,600	86,000	0.5
Persons not in an economic family	25,800	26,000	0.8*	25,200	25,400	0.8	27,200	26,600	-2.2*
<b>Median government transfers</b>									
Economic families and persons not in an economic family	5,700	5,700	0.0	7,800	7,700	-1.3*	8,200	8,100	-1.2
Economic families	7,800	7,700	-1.3*	9,500	9,400	-1.1	9,900	9,800	-1.0
Persons not in an economic family	1,600	1,600	0.0	1,800	1,800	0.0	2,800	2,800	0.0
<b>Median total income</b>									
Economic families and persons not in an economic family	66,400	66,300	-0.2*	67,700	67,200	-0.7*	71,200	70,000	-1.7*
Economic families	92,100	92,300	0.2*	94,600	95,100	0.5*	99,100	99,300	0.2
Persons not in an economic family	34,300	34,500	0.6	33,300	33,300	0.0	35,700	35,100	-1.7*
<b>Median income tax</b>									
Economic families and persons not in an economic family	7,100	7,100	0.0	7,000	6,900	-1.4	7,600	7,400	-2.6*
Economic families	10,900	11,000	0.9*	11,300	11,500	1.8*	12,200	12,200	0.0
Persons not in an economic family	2,700	2,700	0.0	2,400	2,500	4.2	2,800	2,600	-7.1*
<b>Median after-tax income</b>									
Economic families and persons not in an economic family	58,800	58,700	-0.2*	60,400	59,900	-0.8*	62,900	61,900	-1.6*
Economic families	80,300	80,400	0.1	83,100	83,600	0.6*	86,700	86,800	0.1
Persons not in an economic family	31,200	31,300	0.3	30,600	30,700	0.3	32,200	31,900	-0.9

\* denotes changes that are statistically significant at the 95% confidence level

Source: Statistics Canada, Canadian Income Survey. Table 11-10-0190-01.

Most provinces tended to have their median incomes revised downwards.<sup>5</sup> Prince Edward Island and British Columbia had relatively large downward revisions to their median after-tax income estimates in 2019, down 5.8% and 4.7% respectively. Four other provinces also had downward revisions to their after-tax median income estimates in 2019: New Brunswick (down 3.5%), Quebec (down 1.1%), Ontario (down 3.0%) and Manitoba (down 1.8%). Saskatchewan and Alberta had their median after-tax income estimates revised upwards in 2019, by 2.1% and 1.9%, respectively.

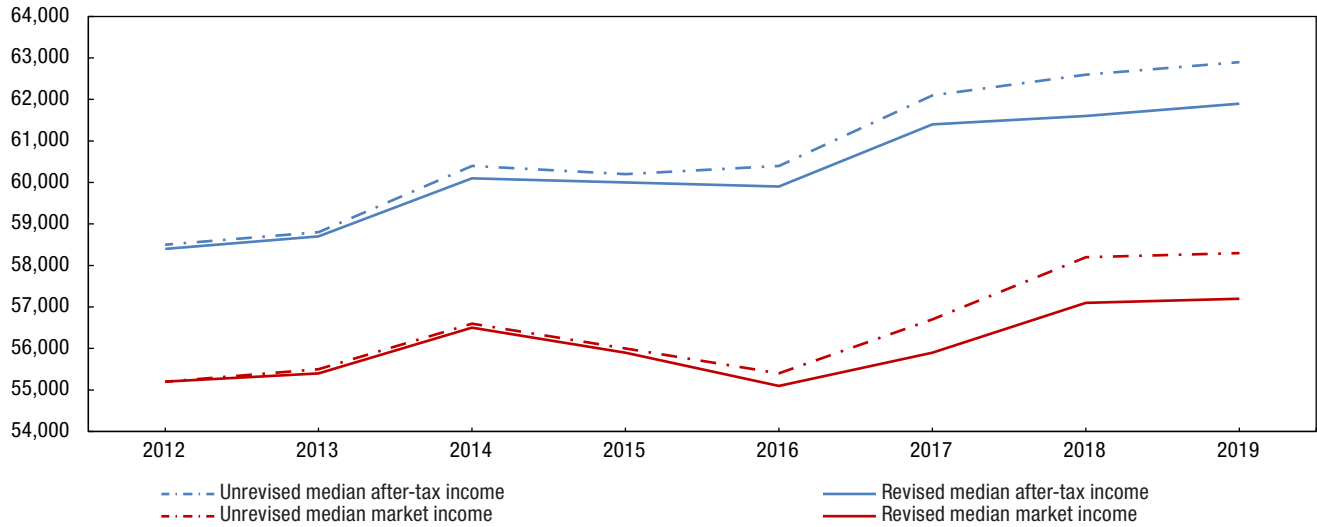
At the Canada level, the overall impact on the income estimates was relatively small and did not change the historical trends. As can be seen on Charts 4.1 to 4.3, the revised median after-tax income and market income series for the overall category of economic families and persons not in an economic family were lower than the unrevised series, while it was the opposite for economic families. Given that the income series were little changed for persons not in an economic family, the impact of the revision on the overall category may appear counterintuitive. This can be explained by the fact that the revisions led to changes in the composition of the population. As mentioned in section 4.1, the number of persons not in an economic family was revised upward, while the number of persons in economic families was revised downward. Consequently, since persons not in an economic family generally have lower incomes than economic families, the income series for the overall category were revised downward.

5. For more information, please see Tables 7.11 to 7.20.



**Chart 4.1**  
**Comparison of revised and unrevised median after-tax income and median market income for economic families and persons not in an economic family, Canada, 2012 to 2019**

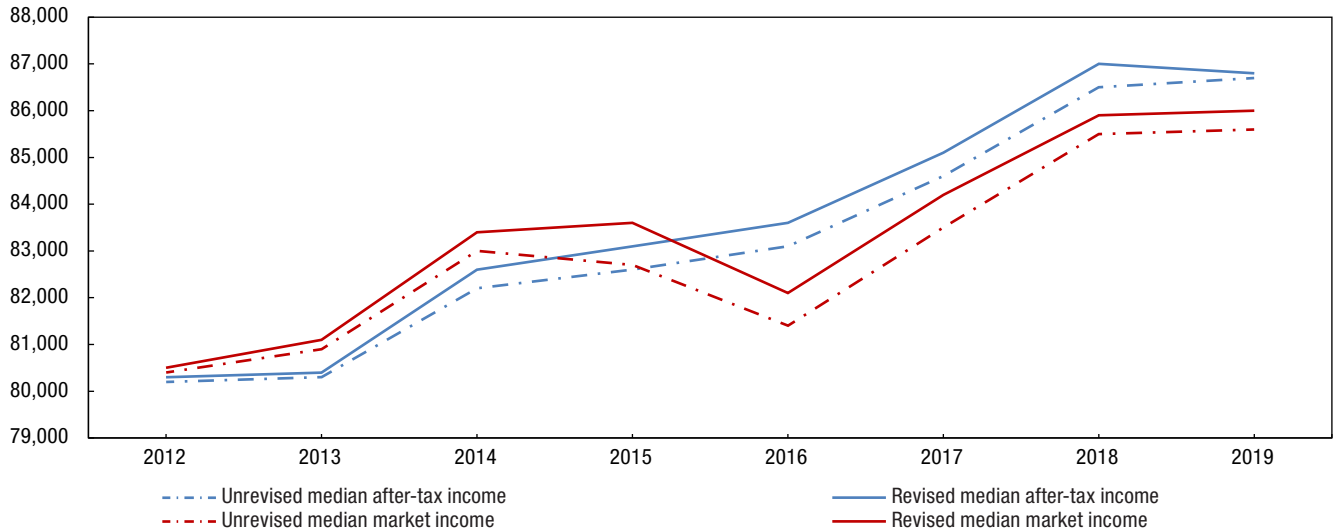
2019 constant dollars



Source: Statistics Canada, Canadian Income Survey, Table 11-10-0190-01.

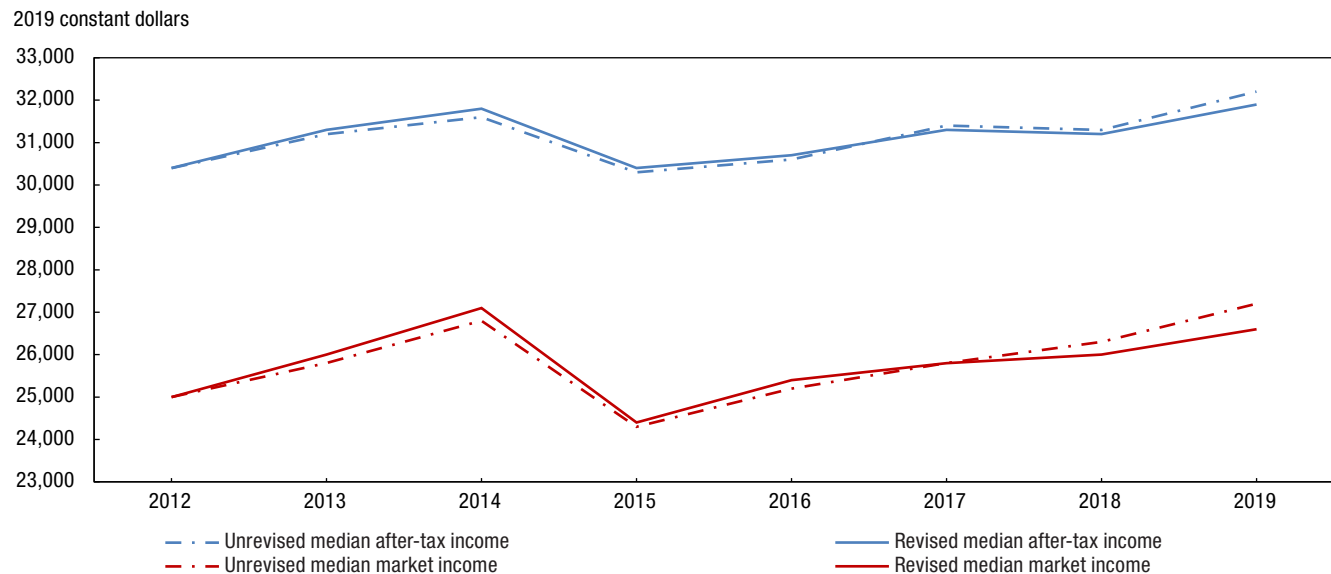
**Chart 4.2**  
**Comparison of revised and unrevised median after-tax income and median market income for economic families, Canada, 2012 to 2019**

2019 constant dollars



Source: Statistics Canada, Canadian Income Survey, Table 11-10-0190-01.

**Chart 4.3**  
**Comparison of revised and unrevised median after-tax income and median market income for persons not in an economic family, Canada, 2012 to 2019**



Source: Statistics Canada, Canadian Income Survey, Table 11-10-0190-01.

### 4.3 Poverty and low income

The revisions to population and income estimates resulting from the population rebasing also had an impact on the poverty and low-income estimates. Poverty estimates are based on the Market Basket Measure (MBM),<sup>6</sup> while low-income estimates are based on the low income measure after-tax (LIM-AT). The MBM establishes poverty thresholds based on the cost of a basket of food, clothing, shelter, transportation and other necessities. Persons whose family disposable income is less than the applicable thresholds, given their family size and region of residence, are deemed to be in poverty. The LIM-AT defines an individual as being in low income if their household after-tax income is less than half of the median income of all households in Canada, adjusted for household size<sup>7</sup>.

**Table 4.3**  
**Comparison of revised and unrevised poverty and low-income rates for all persons, Canada, 2013, 2016 and 2019**

	2013			2016			2019		
	Unrevised	Revised	Change	Unrevised	Revised	Change	Unrevised	Revised	Change
	%		percentage points	%		percentage points	%		percentage points
<b>Percentage of persons in poverty or low income</b>									
Poverty rate (2018-base MBM)	..	..	..	12.8	12.9	0.1	10.1	10.3	0.2*
Poverty rate (2008-base MBM)	12.1	12.1	0.0	10.6	10.6	0.0	8.2	8.3	0.1
Low-income rate (LIM-AT)	13.4	13.4	0.0	13.0	13.0	0.0	12.1	12.1	0.0

.. not available for a specific reference period

\* denotes changes that are statistically significant at the 95% confidence level

Source: Statistics Canada, Canadian Income Survey, Table 11-10-0135-01.

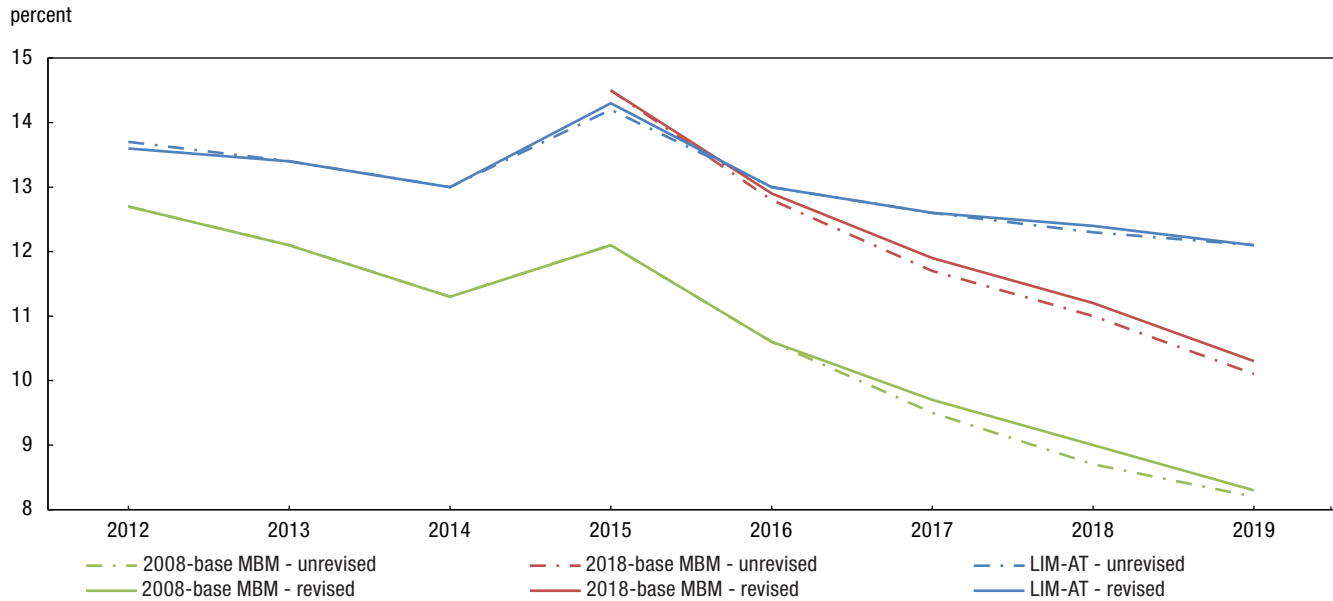
6. The Market Basket Measure (MBM) was adopted as Canada's Official Poverty Line in June 2019. For more information please see [Report on the second comprehensive review of the Market Basket Measure](#).

7. Since the LIM thresholds are calculated each year and they use income and household size data from CIS, the population rebasing also had an impact the LIM thresholds for all the revised years. The revised LIM thresholds can be found in [Table 11-10-0232-01](#).

Overall, the revisions to these poverty and low-income statistics were small. The only statistically significant change at the Canada level, for all persons, was the 2018-base MBM poverty rate for 2019 (Table 4.3), with a slight increase of 0.2 percentage points. With the exception of Prince Edward Island, which experienced larger changes, most of the statistically significant changes to the provincial poverty and low-income rates were below one percentage point, which reflects the generally modest revisions.<sup>8</sup>

#### Chart 4.4

#### Comparison of unrevised and revised poverty and low-income rates for all persons, Canada, 2012 to 2019



Source: Statistics Canada, Canadian Income Survey, Table 11-10-0135-01.

In Prince Edward Island, there were statistically significant increases to the three poverty and low-income rates for 2019. For that year, all three rates increased by 1.4 percentage points as a result of the revisions. For 2016, although increases were larger in magnitude (around 2.0 p.p.), they are not statistically significant due to higher sampling variability at the time.<sup>9</sup>

In British Columbia, the three poverty and low-income rates were higher after the revisions in 2016 and 2019. Poverty rates were up by about 1.0 percentage point in 2019, while the low-income rate was up by 0.7 percentage points.

All three rates were higher after the revisions in Newfoundland and Labrador in 2019, as well as in New Brunswick in 2016. All three rates were lower after the revisions in only two provinces, Saskatchewan and Alberta, in 2016.

8. The provincial level low-income and poverty statistics can be found at the bottom of Tables 7.11 to 7.20. Comparisons between revised and unrevised low-income and poverty rates in the provinces can be found in Charts 6.1 to 6.10.

9. Starting with the 2017 reference year, CIS increased its sample size, thereby decreasing the sampling variability for more recent years.

## 5 References

Djidel, Samir, Burton Gustajtis, Andrew Heisz, Keith Lam, Isabelle Marchand and Sarah McDermott (2020), “[Report on the second comprehensive review of the Market Basket Measure](https://www150.statcan.gc.ca/n1/pub/75f0002m/75f0002m2020002-eng.htm)”. Catalogue no. 75F0002M2020002. <https://www150.statcan.gc.ca/n1/pub/75f0002m/75f0002m2020002-eng.htm>

Statistics Canada (2021). Improvements to the Labour Force Survey (LFS), “[The 2021 Revisions of the Labour Force Survey \(LFS\)](http://www.statcan.gc.ca/pub/71f0031x/71f0031x2021001-eng.pdf)”. Catalogue no. 71F0031X. January 2021. <http://www.statcan.gc.ca/pub/71f0031x/71f0031x2021001-eng.pdf>

Statistics Canada (2019). “[Coverage Technical Report, Census of Population 2016](https://www12.statcan.gc.ca/census-recensement/2016/ref/98-303/98-303-x2016001-eng.pdf)”, Catalogue no. 98-303-X. November 2019. <https://www12.statcan.gc.ca/census-recensement/2016/ref/98-303/98-303-x2016001-eng.pdf>

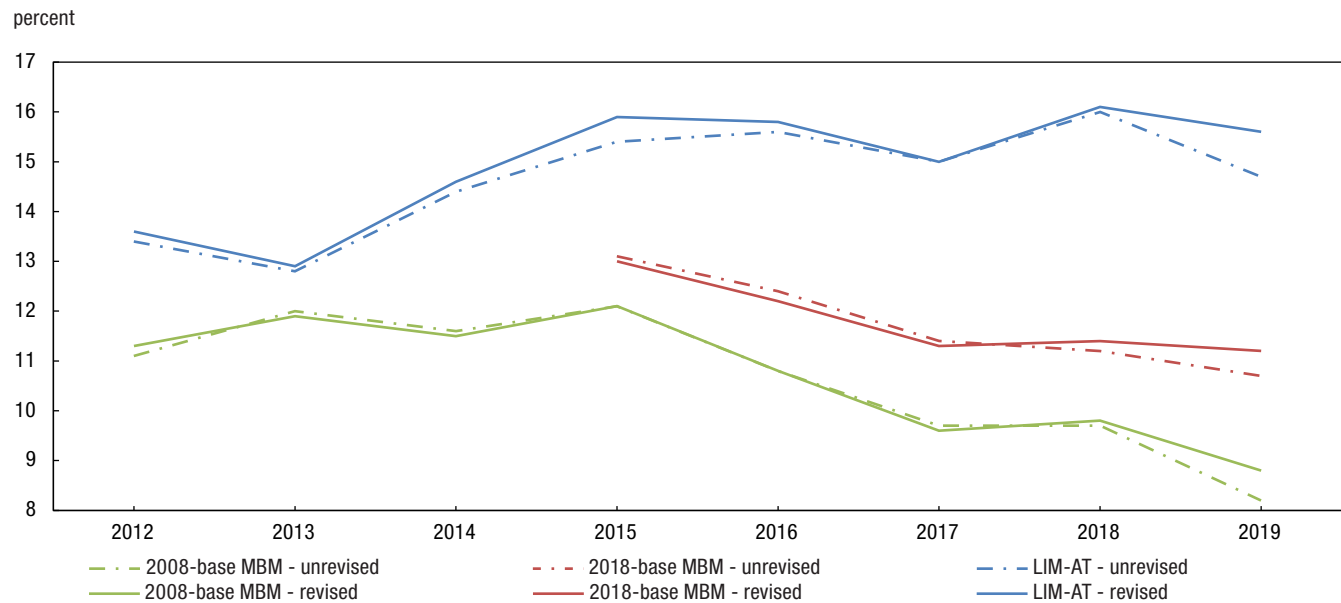
Statistics Canada (2016). “[Population and Family Estimation Methods at Statistics Canada](http://www.statcan.gc.ca/pub/91-528-x/91-528-x2015001-eng.pdf)”. Catalogue no. 91-528-X. March 2016. <http://www.statcan.gc.ca/pub/91-528-x/91-528-x2015001-eng.pdf>

Tremblay, J. (2005). “Aperçu de la stratégie de calage harmonisée des statistiques du revenu de Statistique Canada”. Proceedings of the Survey Methods Section of the Annual Meeting of the Statistical Society of Canada, June 2005.

## 6 Charts

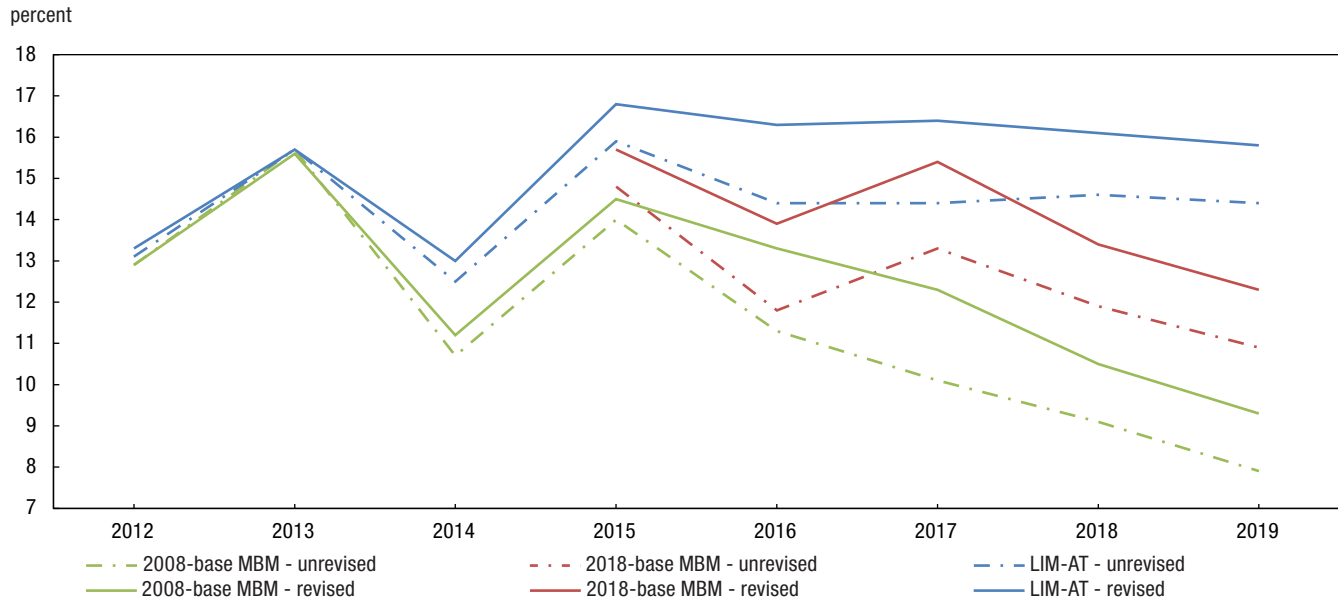
**Chart 6.1**

**Comparison of revised and unrevised poverty and low-income rates for all persons, Newfoundland and Labrador, 2012 to 2019**



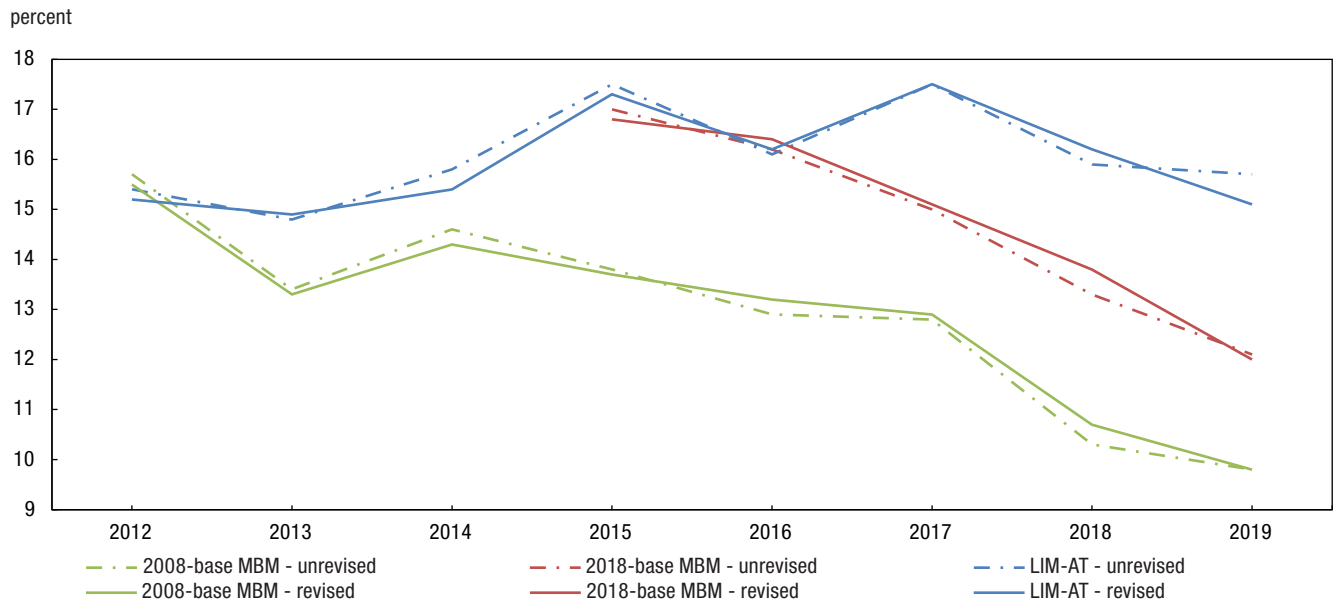
Source: Statistics Canada, Canadian Income Survey, Table 11-10-0135-01.

**Chart 6.2**  
**Comparison of revised and unrevised poverty and low-income rates for all persons, Prince Edward Island, 2012 to 2019**



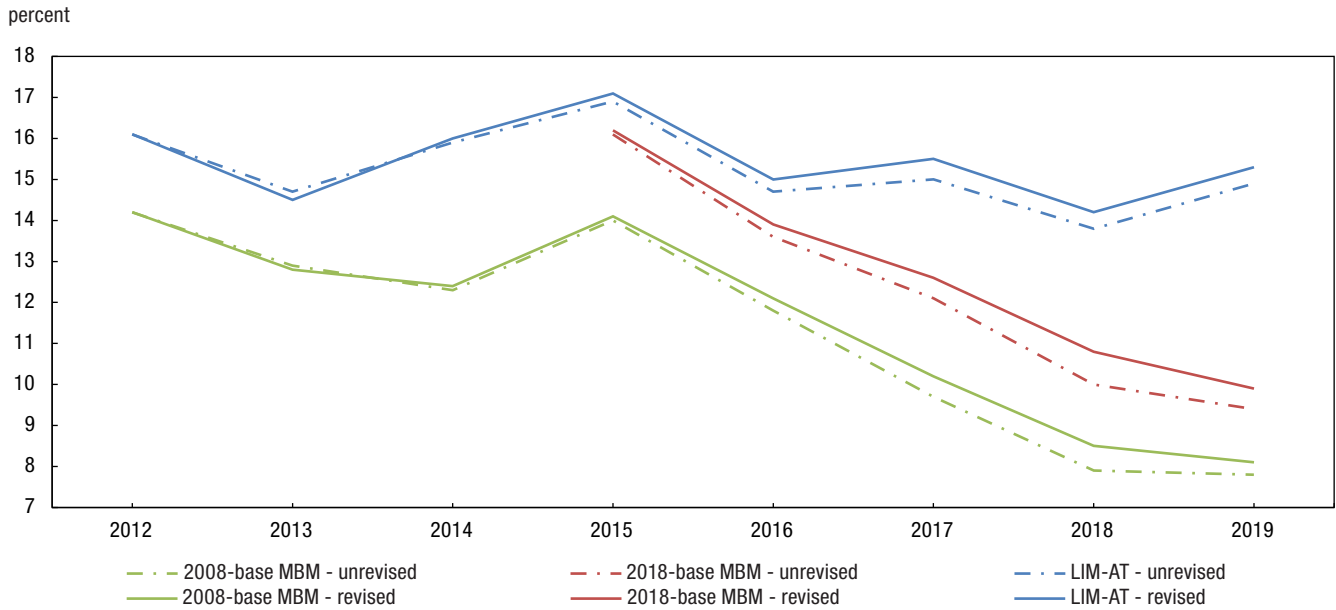
Source: Statistics Canada, Canadian Income Survey. Table 11-10-0135-01.

**Chart 6.3**  
**Comparison of revised and unrevised poverty and low-income rates for all persons, Nova Scotia, 2012 to 2019**



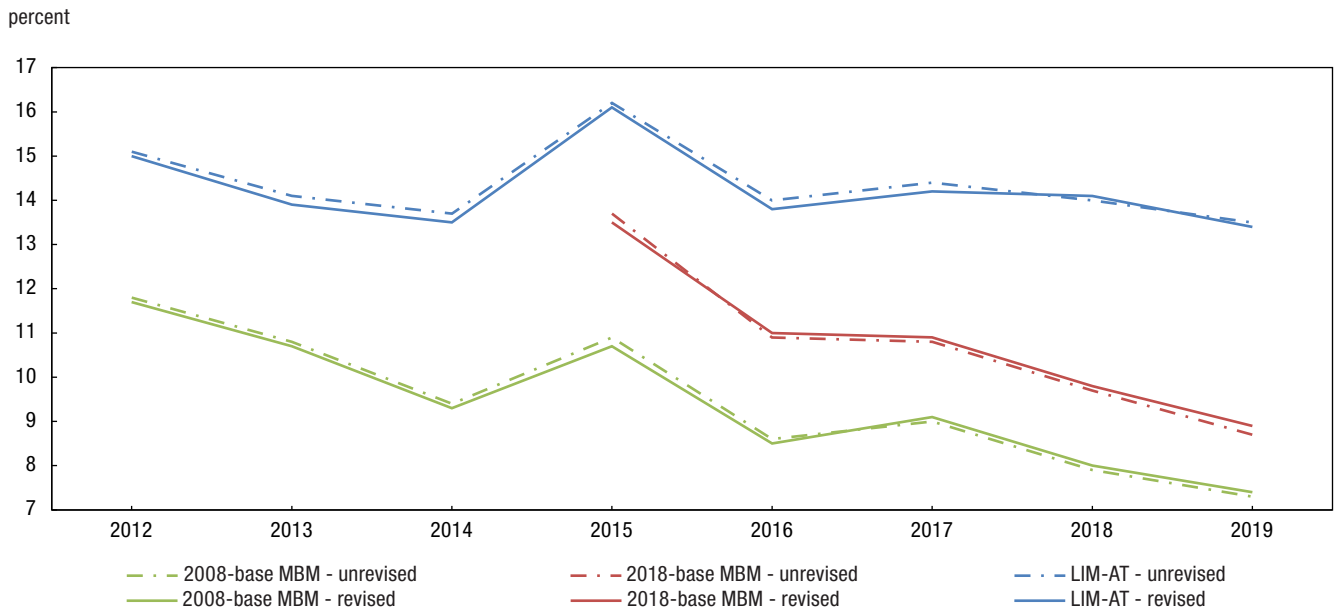
Source: Statistics Canada, Canadian Income Survey. Table 11-10-0135-01.

**Chart 6.4**  
**Comparison of revised and unrevised poverty and low-income rates for all persons, New Brunswick, 2012 to 2019**



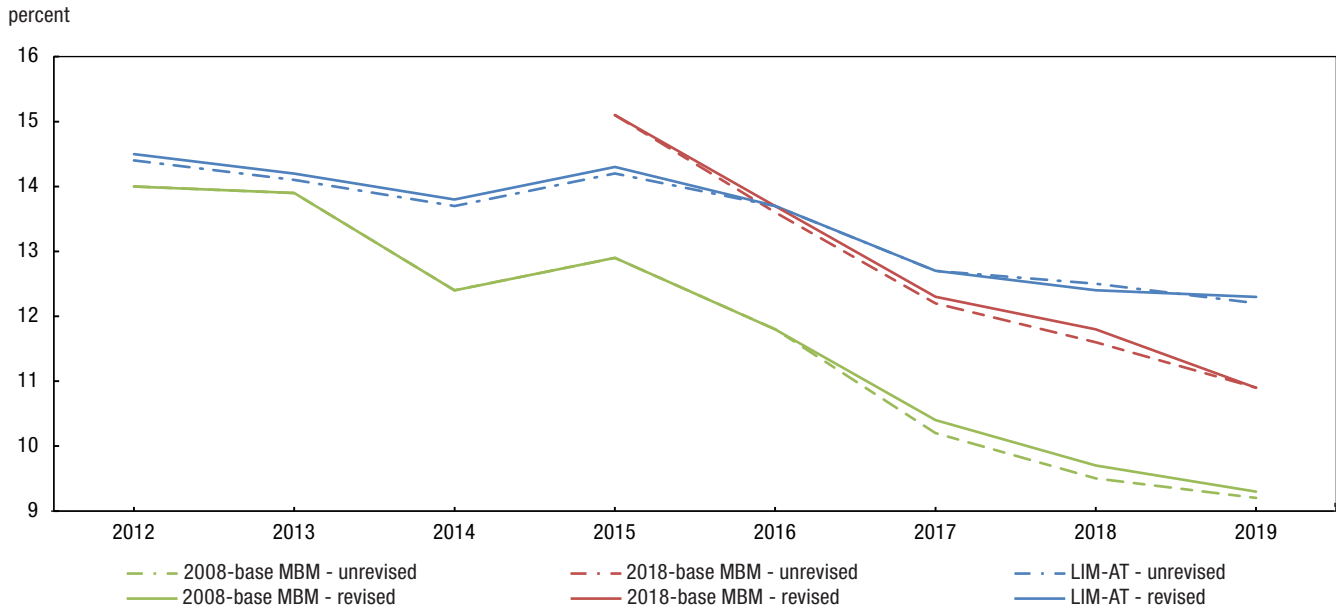
Source: Statistics Canada, Canadian Income Survey. Table 11-10-0135-01.

**Chart 6.5**  
**Comparison of revised and unrevised poverty and low-income rates for all persons, Quebec, 2012 to 2019**



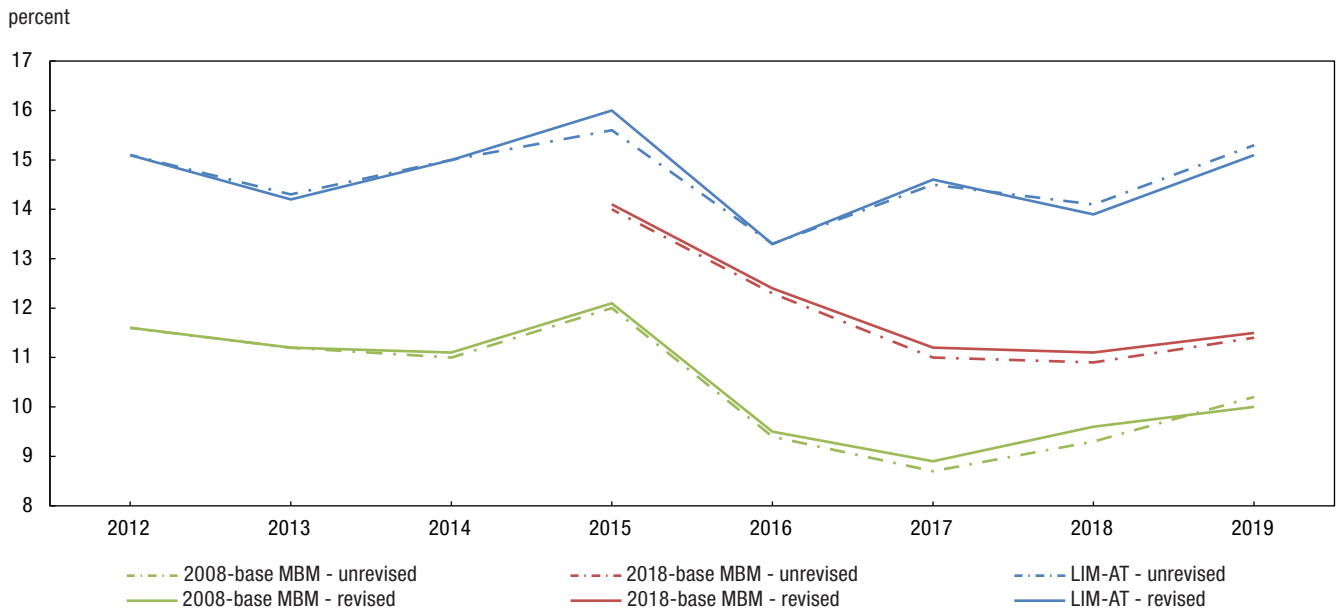
Source: Statistics Canada, Canadian Income Survey. Table 11-10-0135-01.

**Chart 6.6**  
**Comparison of revised and unrevised poverty and low-income rates for all persons, Ontario, 2012 to 2019**



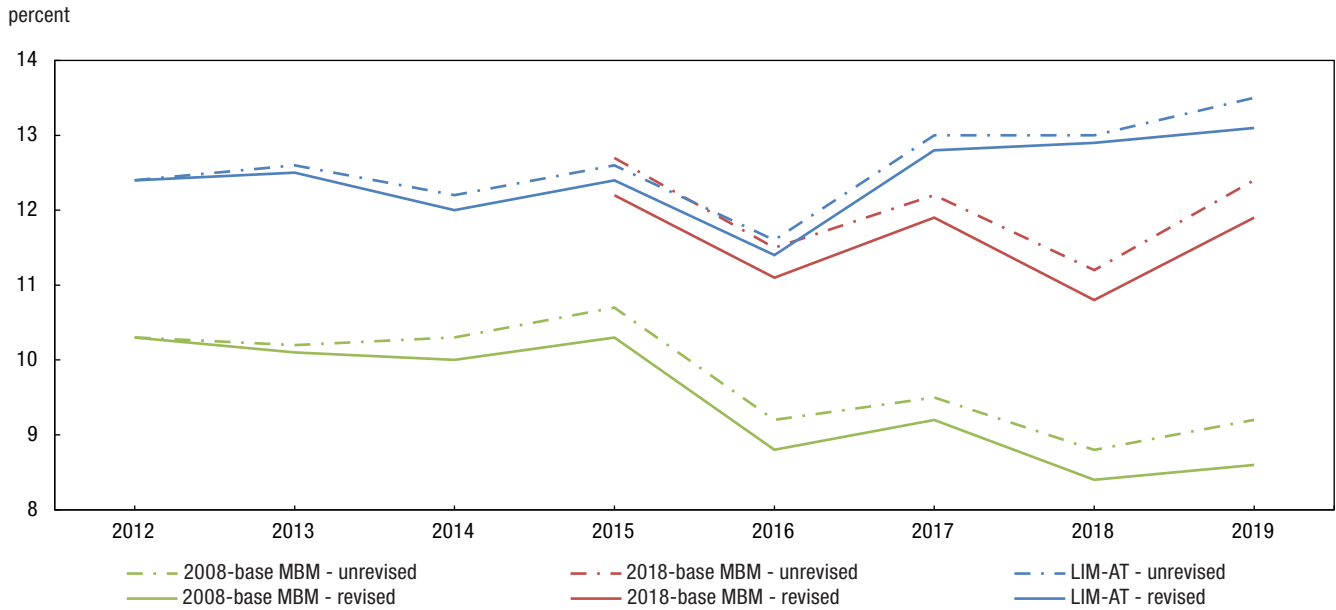
Source: Statistics Canada, Canadian Income Survey. Table 11-10-0135-01.

**Chart 6.7**  
**Comparison of revised and unrevised poverty and low-income rates for all persons, Manitoba, 2012 to 2019**



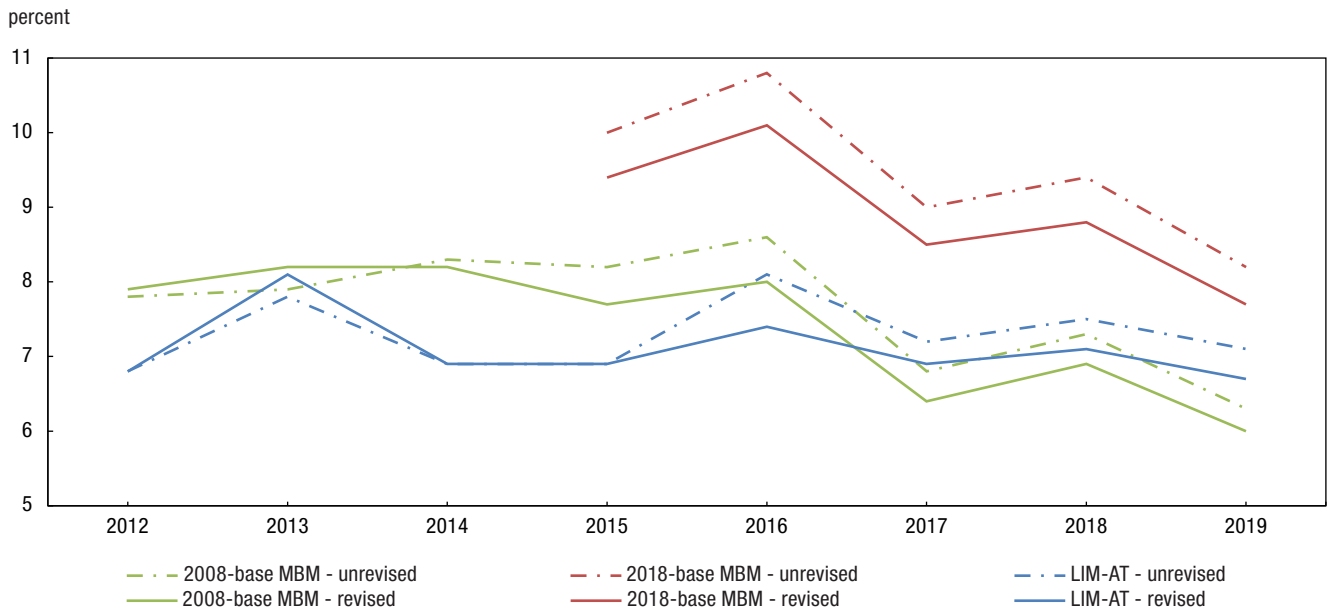
Source: Statistics Canada, Canadian Income Survey. Table 11-10-0135-01.

**Chart 6.8**  
**Comparison of revised and unrevised poverty and low-income rates for all persons, Saskatchewan, 2012 to 2019**



Source: Statistics Canada, Canadian Income Survey. Table 11-10-0135-01.

**Chart 6.9**  
**Comparison of revised and unrevised poverty and low-income rates for all persons, Alberta, 2012 to 2019**

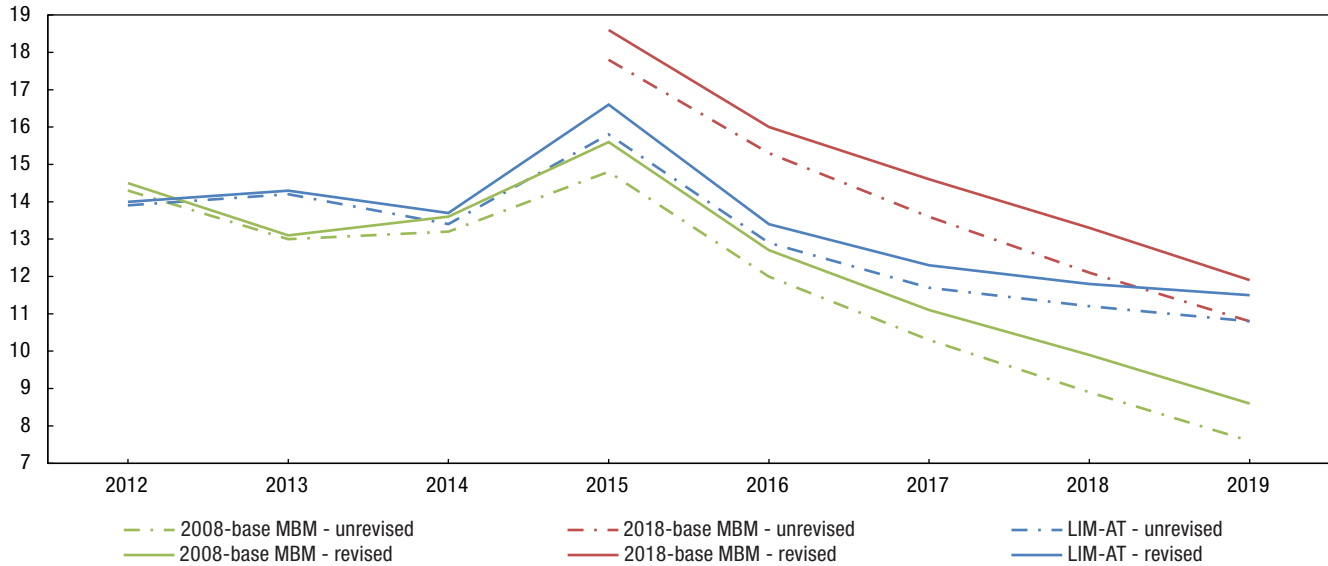


Source: Statistics Canada, Canadian Income Survey. Table 11-10-0135-01.



**Chart 6.10****Comparison of revised and unrevised poverty and low-income rates for all persons, British Columbia, 2012 to 2019**

percent



Source: Statistics Canada, Canadian Income Survey, Table 11-10-0135-01.

**7 Tables****Table 7.1****Comparison of revised and unrevised population estimates by economic family type, Newfoundland and Labrador, 2013, 2016 and 2019**

	2013			2016			2019		
	Unrevised	Revised	Change	Unrevised	Revised	Change	Unrevised	Revised	Change
	('000)		%	('000)		%	('000)		%
Economic families and persons not in an economic family	520	520	0.0	519	522	0.6*	511	516	1.0*
Economic families	450	451	0.2*	446	448	0.4*	438	438	0.0
Senior families	70	70	0.0	73	72	-1.4*	90	91	1.1
Senior couples	55	55	0.0	59	58	-1.7*	66	63	-4.5*
Other senior families	15	15	0.0	F	F	F	24	28	16.7*
Non-senior families	380	381	0.3*	373	376	0.8*	348	347	-0.3
Couples	87	87	0.0	86	84	-2.3*	77	75	-2.6
Couples with children	165	166	0.6	152	154	1.3*	151	148	-2.0
Couples with other relatives	66	67	1.5	47	50	6.4*	65	68	4.6
Lone-parent families	25	25	0.0	44	43	-2.3*	27	27	0.0
Male lone-parent families	F	F	F	F	F	F	F	F	F
Female lone-parent families	20	20	0.0	40	39	-2.5*	22	22	0.0
Other non-senior families	36	36	0.0	45	46	2.2	29	29	0.0
Persons not in an economic family	70	70	0.0	73	74	1.4*	73	78	6.8*
Seniors not in an economic family	20	20	0.0	22	23	4.5*	25	27	8.0*
Senior males not in an economic family	F	F	F	7	8	14.3*	8	9	12.5*
Senior females not in an economic family	14	14	0.0	15	15	0.0	18	18	0.0
Non-seniors not in an economic family	50	49	-2.0*	50	51	2.0	47	51	8.5*
Non-senior males not in an economic family	28	28	0.0	29	29	0.0	26	28	7.7*
Non-senior females not in an economic family	22	22	0.0	22	22	0.0	21	22	4.8*

F too unreliable to be published

\* denotes changes that are statistically significant at the 95% confidence level

Source: Statistics Canada, Canadian Income Survey, Table 11-10-0190-01.

**Table 7.2**  
**Comparison of revised and unrevised population estimates by economic family type, Prince Edward Island, 2013, 2016 and 2019**

	2013			2016			2019		
	Unrevised	Revised	Change	Unrevised	Revised	Change	Unrevised	Revised	Change
	('000)		%	('000)		%	('000)		%
Economic families and persons not in an economic family	143	142	-0.7*	146	146	0.0	155	156	0.6*
Economic families	123	121	-1.6*	125	123	-1.6*	132	131	-0.8*
Senior families	19	19	0.0	25	23	-8.0	22	22	0.0
Senior couples	13	13	0.0	15	14	-6.7	16	16	0.0
Other senior families	5	6	20.0	10	9	-10.0	6	6	0.0
Non-senior families	104	102	-1.9*	100	100	0.0	110	109	-0.9*
Couples	23	23	0.0	23	22	-4.3	23	22	-4.3*
Couples with children	53	51	-3.8*	47	44	-6.4	50	49	-2.0
Couples with other relatives	15	15	0.0	16	15	-6.3	15	15	0.0
Lone-parent families	7	8	14.3*	7	11	57.1	9	10	11.1
Male lone-parent families	F	F	F	F	F	F	F	F	F
Female lone-parent families	6	7	16.7	7	9	28.6	7	8	14.3
Other non-senior families	6	6	0.0	6	7	16.7	13	12	-7.7
Persons not in an economic family	21	21	0.0	21	23	9.5*	23	25	8.7*
Seniors not in an economic family	6	7	16.7*	6	7	16.7	7	8	14.3*
Senior males not in an economic family	F	F	F	F	F	F	2	2	0.0
Senior females not in an economic family	4	4	0.0	4	5	25.0	5	5	0.0
Non-seniors not in an economic family	14	14	0.0	15	16	6.7	16	17	6.3*
Non-senior males not in an economic family	8	8	0.0	8	9	12.5	8	9	12.5*
Non-senior females not in an economic family	7	6	-14.3	7	7	0.0	8	9	12.5

F too unreliable to be published

\* denotes changes that are statistically significant at the 95% confidence level

Source: Statistics Canada, Canadian Income Survey. Table 11-10-0190-01.

**Table 7.3**  
**Comparison of revised and unrevised population estimates by economic family type, Nova Scotia, 2013, 2016 and 2019**

	2013			2016			2019		
	Unrevised	Revised	Change	Unrevised	Revised	Change	Unrevised	Revised	Change
	('000)		%	('000)		%	('000)		%
Economic families and persons not in an economic family	913	910	-0.3*	921	916	-0.5*	946	946	0.0
Economic families	753	752	-0.1*	756	752	-0.5*	776	771	-0.6*
Senior families	120	120	0.0	146	145	-0.7	144	142	-1.4*
Senior couples	86	85	-1.2*	99	96	-3.0*	109	106	-2.8*
Other senior families	34	35	2.9*	47	48	2.1	35	36	2.9
Non-senior families	633	632	-0.2*	611	608	-0.5*	632	629	-0.5*
Couples	148	145	-2.0*	152	145	-4.6*	148	137	-7.4*
Couples with children	279	281	0.7*	249	244	-2.0*	281	280	-0.4
Couples with other relatives	88	89	1.1*	85	86	1.2	83	86	3.6
Lone-parent families	47	47	0.0	61	68	11.5*	53	56	5.7
Male lone-parent families	F	F	F	F	F	F	F	F	F
Female lone-parent families	37	37	0.0	47	55	17.0*	41	43	4.9
Other non-senior families	71	70	-1.4*	64	63	-1.6	68	71	4.4
Persons not in an economic family	160	158	-1.3*	165	164	-0.6*	171	175	2.3*
Seniors not in an economic family	48	48	0.0	44	44	0.0	57	60	5.3*
Senior males not in an economic family	16	15	-6.3	13	14	7.7*	20	21	5.0*
Senior females not in an economic family	33	33	0.0	31	30	-3.2*	37	38	2.7*
Non-seniors not in an economic family	111	110	-0.9*	120	120	0.0	114	116	1.8
Non-senior males not in an economic family	58	56	-3.4*	61	61	0.0	58	57	-1.7
Non-senior females not in an economic family	54	53	-1.9	59	59	0.0	57	59	3.5*

F too unreliable to be published

\* denotes changes that are statistically significant at the 95% confidence level

Source: Statistics Canada, Canadian Income Survey. Table 11-10-0190-01.

**Table 7.4**  
**Comparison of revised and unrevised population estimates by economic family type, New Brunswick, 2013, 2016 and 2019**

	2013			2016			2019		
	Unrevised	Revised	Change	Unrevised	Revised	Change	Unrevised	Revised	Change
	('000)		%	('000)		%	('000)		%
Economic families and persons not in an economic family	731	735	0.5*	731	741	1.4*	744	756	1.6*
Economic families	620	622	0.3*	618	618	0.0	627	625	-0.3*
Senior families	100	99	-1.0*	107	105	-1.9*	112	108	-3.6*
Senior couples	72	71	-1.4*	86	83	-3.5*	85	80	-5.9*
Other senior families	28	29	3.6	21	22	4.8*	27	28	3.7
Non-senior families	520	522	0.4*	511	513	0.4*	516	517	0.2
Couples	128	127	-0.8	125	120	-4.0*	123	117	-4.9*
Couples with children	239	245	2.5*	223	229	2.7*	215	220	2.3*
Couples with other relatives	71	72	1.4*	72	76	5.6*	78	84	7.7*
Lone-parent families	43	39	-9.3*	51	49	-3.9*	53	49	-7.5*
Male lone-parent families	F	F	F	F	F	F	F	F	F
Female lone-parent families	37	33	-10.8*	40	39	-2.5*	39	38	-2.6
Other non-senior families	40	40	0.0	40	39	-2.5	47	46	-2.1
Persons not in an economic family	110	113	2.7*	114	123	7.9*	117	131	12.0*
Seniors not in an economic family	33	34	3.0*	38	41	7.9*	47	53	12.8*
Senior males not in an economic family	10	10	0.0	12	14	16.7*	15	18	20.0*
Senior females not in an economic family	23	24	4.3*	26	28	7.7*	32	35	9.4*
Non-seniors not in an economic family	77	79	2.6*	76	81	6.6*	70	79	12.9*
Non-senior males not in an economic family	45	46	2.2*	41	45	9.8*	40	44	10.0*
Non-senior females not in an economic family	32	34	6.3*	34	36	5.9*	30	35	16.7*

F too unreliable to be published

\* denotes changes that are statistically significant at the 95% confidence level

Source: Statistics Canada, Canadian Income Survey. Table 11-10-0190-01.

**Table 7.5**  
**Comparison of revised and unrevised population estimates by economic family type, Quebec, 2013, 2016 and 2019**

	2013			2016			2019		
	Unrevised	Revised	Change	Unrevised	Revised	Change	Unrevised	Revised	Change
	('000)		%	('000)		%	('000)		%
Economic families and persons not in an economic family	8,024	7,967	-0.7*	8,194	8,096	-1.2*	8,417	8,370	-0.6*
Economic families	6,577	6,518	-0.9*	6,694	6,577	-1.7*	6,866	6,767	-1.4*
Senior families	873	855	-2.1*	1,000	957	-4.3*	1,032	973	-5.7*
Senior couples	703	684	-2.7*	759	721	-5.0*	805	746	-7.3*
Other senior families	170	171	0.6	241	235	-2.5*	227	227	0.0
Non-senior families	5,704	5,663	-0.7*	5,694	5,621	-1.3*	5,833	5,794	-0.7*
Couples	1,187	1,160	-2.3*	1,212	1,155	-4.7*	1,257	1,189	-5.4*
Couples with children	2,633	2,627	-0.2	2,766	2,750	-0.6	2,836	2,868	1.1
Couples with other relatives	786	783	-0.4	757	754	-0.4	796	792	-0.5
Lone-parent families	418	427	2.2	409	427	4.4*	380	370	-2.6
Male lone-parent families	119	122	2.5	63	70	11.1	94	103	9.6
Female lone-parent families	299	305	2.0*	346	358	3.5*	286	267	-6.6
Other non-senior families	681	667	-2.1*	550	535	-2.7*	564	574	1.8
Persons not in an economic family	1,448	1,449	0.1*	1,500	1,519	1.3*	1,551	1,603	3.4*
Seniors not in an economic family	444	444	0.0	442	449	1.6*	554	572	3.2*
Senior males not in an economic family	137	140	2.2*	145	154	6.2*	197	217	10.2*
Senior females not in an economic family	307	304	-1.0*	298	294	-1.3*	357	356	-0.3
Non-seniors not in an economic family	1,003	1,005	0.2	1,058	1,070	1.1*	997	1,031	3.4*
Non-senior males not in an economic family	572	572	0.0	618	625	1.1*	555	570	2.7*
Non-senior females not in an economic family	431	433	0.5	440	446	1.4*	442	461	4.3*

\* denotes changes that are statistically significant at the 95% confidence level

Source: Statistics Canada, Canadian Income Survey. Table 11-10-0190-01.

**Table 7.6**  
**Comparison of revised and unrevised population estimates by economic family type, Ontario, 2013, 2016 and 2019**

	2013			2016			2019		
	Unrevised	Revised	Change	Unrevised	Revised	Change	Unrevised	Revised	Change
	('000)		%	('000)		%	('000)		%
Economic families and persons not in an economic family	13,387	13,336	-0.4*	13,806	13,741	-0.5*	14,515	14,419	-0.7*
Economic families	11,538	11,450	-0.8*	11,873	11,695	-1.5*	12,459	12,201	-2.1*
Senior families	1,507	1,477	-2.0*	1,608	1,544	-4.0*	1,845	1,748	-5.3*
Senior couples	1,003	976	-2.7*	1,114	1,057	-5.1*	1,242	1,143	-8.0*
Other senior families	504	501	-0.6*	495	487	-1.6*	603	604	0.2
Non-senior families	10,031	9,972	-0.6*	10,264	10,151	-1.1*	10,614	10,454	-1.5*
Couples	1,483	1,430	-3.6*	1,597	1,488	-6.8*	1,638	1,504	-8.2*
Couples with children	4,989	5,015	0.5*	5,026	5,063	0.7*	5,128	5,100	-0.5
Couples with other relatives	1,703	1,691	-0.7*	1,898	1,870	-1.5*	1,747	1,725	-1.3
Lone-parent families	679	684	0.7*	703	722	2.7*	705	724	2.7
Male lone-parent families	90	91	1.1	114	121	6.1*	125	133	6.4
Female lone-parent families	588	593	0.9*	589	601	2.0*	580	591	1.9
Other non-senior families	1,176	1,152	-2.0*	1,041	1,008	-3.2*	1,397	1,399	0.1
Persons not in an economic family	1,849	1,887	2.1*	1,933	2,046	5.8*	2,056	2,218	7.9*
Seniors not in an economic family	489	502	2.7*	550	584	6.2*	666	725	8.9*
Senior males not in an economic family	155	162	4.5*	160	176	10.0*	217	249	14.7*
Senior females not in an economic family	333	340	2.1*	390	408	4.6*	450	476	5.8*
Non-seniors not in an economic family	1,361	1,385	1.8*	1,383	1,462	5.7*	1,390	1,493	7.4*
Non-senior males not in an economic family	770	787	2.2*	754	805	6.8*	758	820	8.2*
Non-senior females not in an economic family	590	598	1.4*	630	657	4.3*	632	672	6.3*

\* denotes changes that are statistically significant at the 95% confidence level

Source: Statistics Canada, Canadian Income Survey, Table 11-10-0190-01.

**Table 7.7**  
**Comparison of revised and unrevised population estimates by economic family type, Manitoba, 2013, 2016 and 2019**

	2013			2016			2019		
	Unrevised	Revised	Change	Unrevised	Revised	Change	Unrevised	Revised	Change
	('000)		%	('000)		%	('000)		%
Economic families and persons not in an economic family	1,185	1,184	-0.1*	1,228	1,235	0.6*	1,277	1,288	0.9*
Economic families	1,010	1,010	0.0	1,047	1,053	0.6*	1,089	1,095	0.6*
Senior families	127	128	0.8	130	130	0.0	162	160	-1.2*
Senior couples	98	99	1.0*	98	97	-1.0*	114	111	-2.6*
Other senior families	29	29	0.0	32	33	3.1*	48	48	0.0
Non-senior families	883	883	0.0	917	924	0.8*	926	936	1.1*
Couples	152	150	-1.3*	155	149	-3.9*	151	144	-4.6*
Couples with children	440	443	0.7*	473	486	2.7*	486	497	2.3*
Couples with other relatives	125	125	0.0	132	131	-0.8*	143	144	0.7
Lone-parent families	72	74	2.8	59	61	3.4*	58	63	8.6
Male lone-parent families	10	10	0.0	F	F	F	F	F	F
Female lone-parent families	63	64	1.6	52	53	1.9*	46	51	10.9
Other non-senior families	93	92	-1.1*	97	96	-1.0*	89	88	-1.1
Persons not in an economic family	175	174	-0.6*	181	182	0.6*	189	193	2.1*
Seniors not in an economic family	51	50	-2.0*	61	60	-1.6*	57	58	1.8
Senior males not in an economic family	15	15	0.0	20	20	0.0	19	19	0.0
Senior females not in an economic family	36	35	-2.8*	40	40	0.0	39	40	2.6
Non-seniors not in an economic family	124	124	0.0	120	122	1.7*	131	135	3.1*
Non-senior males not in an economic family	67	66	-1.5*	72	73	1.4*	76	79	3.9*
Non-senior females not in an economic family	57	58	1.8*	48	49	2.1	55	56	1.8

F too unreliable to be published

\* denotes changes that are statistically significant at the 95% confidence level

Source: Statistics Canada, Canadian Income Survey, Table 11-10-0190-01.

**Table 7.8**  
**Comparison of revised and unrevised population estimates by economic family type, Saskatchewan, 2013, 2016 and 2019**

	2013			2016			2019		
	Unrevised	Revised	Change	Unrevised	Revised	Change	Unrevised	Revised	Change
	('000)		%	('000)		%	('000)		%
Economic families and persons not in an economic family	1,033	1,032	-0.1*	1,071	1,068	-0.3*	1,098	1,103	0.5*
Economic families	865	867	0.2*	898	903	0.6*	921	932	1.2*
Senior families	105	107	1.9	117	117	0.0	135	133	-1.5
Senior couples	84	84	0.0	88	87	-1.1*	107	103	-3.7*
Other senior families	22	23	4.5	29	29	0.0	28	30	7.1*
Non-senior families	760	761	0.1	781	787	0.8*	786	799	1.7*
Couples	153	148	-3.3*	161	147	-8.7*	160	143	-10.6*
Couples with children	397	399	0.5*	408	422	3.4*	406	432	6.4*
Couples with other relatives	83	84	1.2*	95	101	6.3*	109	114	4.6*
Lone-parent families	51	54	5.9*	49	51	4.1	56	52	-7.1
Male lone-parent families	F	F	F	10	9	-10.0	F	F	F
Female lone-parent families	44	46	4.5*	39	42	7.7	42	41	-2.4
Other non-senior families	76	74	-2.6*	68	66	-2.9*	54	57	5.6
Persons not in an economic family	168	165	-1.8*	173	164	-5.2*	177	171	-3.4*
Seniors not in an economic family	48	49	2.1*	51	52	2.0*	47	50	6.4*
Senior males not in an economic family	16	16	0.0	19	19	0.0	16	17	6.3*
Senior females not in an economic family	33	33	0.0	32	33	3.1*	31	33	6.5*
Non-seniors not in an economic family	120	116	-3.3*	123	112	-8.9*	131	121	-7.6*
Non-senior males not in an economic family	69	66	-4.3*	70	64	-8.6*	73	68	-6.8*
Non-senior females not in an economic family	51	49	-3.9*	53	48	-9.4*	57	53	-7.0*

F too unreliable to be published

\* denotes changes that are statistically significant at the 95% confidence level

Source: Statistics Canada, Canadian Income Survey. Table 11-10-0190-01.

**Table 7.9**  
**Comparison of revised and unrevised population estimates by economic family type, Alberta, 2013, 2016 and 2019**

	2013			2016			2019		
	Unrevised	Revised	Change	Unrevised	Revised	Change	Unrevised	Revised	Change
	('000)		%	('000)		%	('000)		%
Economic families and persons not in an economic family	3,961	3,928	-0.8*	4,189	4,110	-1.9*	4,365	4,292	-1.7*
Economic families	3,358	3,319	-1.2*	3,564	3,518	-1.3*	3,714	3,677	-1.0*
Senior families	327	326	-0.3	346	338	-2.3*	435	424	-2.5
Senior couples	251	246	-2.0*	281	272	-3.2*	298	276	-7.4*
Other senior families	76	79	3.9	65	66	1.5	137	149	8.8*
Non-senior families	3,031	2,993	-1.3*	3,218	3,180	-1.2*	3,279	3,252	-0.8*
Couples	559	540	-3.4*	604	547	-9.4*	628	539	-14.2*
Couples with children	1,607	1,586	-1.3	1,656	1,699	2.6*	1,736	1,761	1.4
Couples with other relatives	427	394	-7.7*	460	459	-0.2	503	528	5.0*
Lone-parent families	137	184	34.3*	166	159	-4.2	132	137	3.8
Male lone-parent families	F	F	F	63	65	3.2	33	33	0.0
Female lone-parent families	109	149	36.7*	102	94	-7.8	99	103	4.0
Other non-senior families	301	289	-4.0	331	316	-4.5*	280	287	2.5
Persons not in an economic family	603	609	1.0*	625	592	-5.3*	651	615	-5.5*
Seniors not in an economic family	106	109	2.8*	131	134	2.3	145	143	-1.4
Senior males not in an economic family	32	33	3.1*	47	49	4.3	39	38	-2.6
Senior females not in an economic family	75	76	1.3	84	85	1.2	106	105	-0.9
Non-seniors not in an economic family	497	500	0.6*	494	458	-7.3*	507	473	-6.7*
Non-senior males not in an economic family	290	289	-0.3	280	250	-10.7*	290	266	-8.3*
Non-senior females not in an economic family	207	210	1.4	214	208	-2.8*	216	207	-4.2*

F too unreliable to be published

\* denotes changes that are statistically significant at the 95% confidence level

Source: Statistics Canada, Canadian Income Survey. Table 11-10-0190-01.

**Table 7.10**  
**Comparison of revised and unrevised population estimates by economic family type, British Columbia, 2013, 2016 and 2019**

	2013			2016			2019		
	Unrevised	Revised	Change	Unrevised	Revised	Change	Unrevised	Revised	Change
	('000)		%	('000)		%	('000)		%
Economic families and persons not in an economic family	4,470	4,532	1.4*	4,631	4,747	2.5*	4,828	4,984	3.2*
Economic families	3,704	3,742	1.0*	3,828	3,888	1.6*	3,983	4,059	1.9*
Senior families	545	540	-0.9	550	535	-2.7*	632	625	-1.1
Senior couples	363	352	-3.0*	426	404	-5.2*	461	437	-5.2*
Other senior families	181	188	3.9*	124	131	5.6*	171	188	9.9*
Non-senior families	3,159	3,203	1.4*	3,278	3,353	2.3*	3,350	3,434	2.5*
Couples	597	603	1.0*	569	575	1.1	637	642	0.8
Couples with children	1,526	1,558	2.1*	1,563	1,606	2.8*	1,520	1,555	2.3*
Couples with other relatives	470	490	4.3*	449	465	3.6*	567	600	5.8*
Lone-parent families	218	200	-8.3*	208	203	-2.4	194	189	-2.6
Male lone-parent families	44	39	-11.4*	34	32	-5.9	33	32	-3.0
Female lone-parent families	174	161	-7.5*	174	171	-1.7	161	156	-3.1
Other non-senior families	348	352	1.1	489	503	2.9*	433	448	3.5
Persons not in an economic family	767	790	3.0*	803	859	7.0*	845	925	9.5*
Seniors not in an economic family	199	197	-1.0*	213	214	0.5	242	249	2.9
Senior males not in an economic family	70	68	-2.9	71	69	-2.8*	96	96	0.0
Senior females not in an economic family	129	128	-0.8	142	145	2.1*	147	153	4.1*
Non-seniors not in an economic family	568	593	4.4*	589	645	9.5*	603	676	12.1*
Non-senior males not in an economic family	329	339	3.0*	334	358	7.2*	310	347	11.9*
Non-senior females not in an economic family	238	254	6.7*	256	286	11.7*	294	329	11.9*

\* denotes changes that are statistically significant at the 95% confidence level

Source: Statistics Canada, Canadian Income Survey, Table 11-10-0190-01.

**Table 7.11**  
**Comparison of revised and unrevised income, poverty and low-income estimates, Newfoundland and Labrador, 2013, 2016 and 2019**

	2013			2016			2019		
	Unrevised	Revised	Change	Unrevised	Revised	Change	Unrevised	Revised	Change
	2019 constant dollars		%	2019 constant dollars		%	2019 constant dollars		%
<b>Median market income</b>									
Economic families and persons not in an economic family	51,600	51,600	0.0	48,500	48,700	0.4	49,000	46,500	-5.1*
Economic families	68,000	68,600	0.9	67,600	68,200	0.9	69,000	68,300	-1.0
Persons not in an economic family	21,400	19,700	-7.9	20,400	19,500	-4.4	19,700	18,000	-8.6
<b>Median government transfers</b>									
Economic families and persons not in an economic family	11,800	12,000	1.7	14,000	14,300	2.1	15,000	15,300	2.0
Economic families	14,200	14,200	0.0	16,500	16,700	1.2	16,800	17,200	2.4
Persons not in an economic family	8,000	8,000	0.0	10,000	10,100	1.0	11,400	11,500	0.9
<b>Median total income</b>									
Economic families and persons not in an economic family	66,500	66,800	0.5	68,800	69,000	0.3	64,200	62,600	-2.5
Economic families	85,500	85,500	0.0	86,700	87,000	0.3	86,400	85,800	-0.7
Persons not in an economic family	34,200	33,600	-1.8	29,400	29,400	0.0	33,700	31,700	-5.9
<b>Median income tax</b>									
Economic families and persons not in an economic family	7,500	7,500	0.0	7,500	7,500	0.0	6,800	6,600	-2.9
Economic families	10,300	10,400	1.0	10,800	10,800	0.0	12,100	12,000	-0.8
Persons not in an economic family	2,700	2,700	0.0	1,300	1,300	0.0	3,100	2,900	-6.5
<b>Median after-tax income</b>									
Economic families and persons not in an economic family	59,200	59,200	0.0	59,100	59,600	0.8	56,500	55,500	-1.8
Economic families	75,500	75,500	0.0	76,300	76,600	0.4	74,000	73,600	-0.5
Persons not in an economic family	30,900	30,300	-1.9	27,900	28,000	0.4	30,400	30,100	-1.0
	<b>Unrevised</b>	<b>Revised</b>	<b>Change</b>	<b>Unrevised</b>	<b>Revised</b>	<b>Change</b>	<b>Unrevised</b>	<b>Revised</b>	<b>Change</b>
			percentage points			percentage points			percentage points
	%			%			%		
<b>Percentage of persons in poverty or low income</b>									
Poverty rate (2018-base MBM)	..	..	..	12.4	12.2	-0.2	10.7	11.2	0.5*
Poverty rate (2008-base MBM)	12.0	11.9	-0.1	10.8	10.8	0.0	8.2	8.8	0.6*
Low-income rate (LIM-AT)	12.8	12.9	0.1	15.6	15.8	0.2	14.7	15.6	0.9*

.. not available for a specific reference period

\* denotes changes that are statistically significant at the 95% confidence level

Source: Statistics Canada, Canadian Income Survey. Tables 11-10-0190-01 and 11-10-0135-01.

**Table 7.12****Comparison of revised and unrevised income, poverty and low-income estimates, Prince Edward Island, 2013, 2016 and 2019**

	2013			2016			2019		
	Unrevised	Revised	Change	Unrevised	Revised	Change	Unrevised	Revised	Change
	2019 constant dollars		%	2019 constant dollars		%	2019 constant dollars		%
<b>Median market income</b>									
Economic families and persons not in an economic family	44,400	44,700	0.7	46,300	43,600	-5.8	48,100	46,900	-2.5
Economic families	67,500	68,300	1.2	68,200	63,600	-6.7	70,300	68,400	-2.7
Persons not in an economic family	22,500	22,500	0.0	22,200	21,900	-1.4	23,400	21,900	-6.4
<b>Median government transfers</b>									
Economic families and persons not in an economic family	12,600	12,400	-1.6	11,500	11,200	-2.6	12,400	11,900	-4.0
Economic families	14,000	13,700	-2.1	14,700	13,600	-7.5	16,400	15,700	-4.3
Persons not in an economic family	9,000	9,100	1.1	7,000	7,000	0.0	6,300	6,600	4.8
<b>Median total income</b>									
Economic families and persons not in an economic family	61,900	61,800	-0.2	61,700	58,500	-5.2	68,100	64,400	-5.4
Economic families	83,200	84,100	1.1	87,000	80,500	-7.5	92,300	88,500	-4.1
Persons not in an economic family	32,000	32,400	1.3	30,000	29,700	-1.0	31,600	31,200	-1.3
<b>Median income tax</b>									
Economic families and persons not in an economic family	7,200	7,200	0.0	7,300	6,600	-9.6	7,700	7,200	-6.5
Economic families	11,000	11,100	0.9	10,400	9,900	-4.8	12,800	11,900	-7.0
Persons not in an economic family	3,500	3,600	2.9	3,500	3,100	-11.4	2,600	2,500	-3.8
<b>Median after-tax income</b>									
Economic families and persons not in an economic family	54,000	53,900	-0.2	54,600	52,800	-3.3	60,300	56,800	-5.8
Economic families	71,800	71,800	0.0	74,400	70,900	-4.7	79,000	76,300	-3.4
Persons not in an economic family	28,500	28,700	0.7	27,200	27,000	-0.7	29,000	28,900	-0.3
	Unrevised	Revised	Change	Unrevised	Revised	Change	Unrevised	Revised	Change
			percentage points			percentage points			percentage points
	%			%			%		
<b>Percentage of persons in poverty or low income</b>									
Poverty rate (2018-base MBM)	..	..	..	11.8	13.9	2.1	10.9	12.3	1.4*
Poverty rate (2008-base MBM)	15.7	15.6	-0.1	11.3	13.3	2.0	7.9	9.3	1.4*
Low-income rate (LIM-AT)	15.7	15.7	0.0	14.4	16.3	1.9	14.4	15.8	1.4*

.. not available for a specific reference period

\* denotes changes that are statistically significant at the 95% confidence level

Source: Statistics Canada, Canadian Income Survey. Tables 11-10-0190-01 and 11-10-0135-01.



**Table 7.13**  
**Comparison of revised and unrevised income, poverty and low-income estimates, Nova Scotia, 2013, 2016 and 2019**

	2013			2016			2019		
	Unrevised	Revised	Change	Unrevised	Revised	Change	Unrevised	Revised	Change
	2019 constant dollars		%	2019 constant dollars		%	2019 constant dollars		%
<b>Median market income</b>									
Economic families and persons not in an economic family	48,100	48,200	0.2	45,500	45,500	0.0	45,500	45,400	-0.2
Economic families	69,200	69,800	0.9	68,000	68,000	0.0	72,400	73,600	1.7
Persons not in an economic family	22,600	22,700	0.4	22,000	22,000	0.0	22,800	22,100	-3.1
<b>Median government transfers</b>									
Economic families and persons not in an economic family	8,000	8,000	0.0	8,900	8,900	0.0	9,600	9,600	0.0
Economic families	9,800	9,800	0.0	12,200	12,200	0.0	11,300	11,300	0.0
Persons not in an economic family	4,800	4,800	0.0	1,700	1,700	0.0	6,300	6,400	1.6
<b>Median total income</b>									
Economic families and persons not in an economic family	59,000	59,300	0.5	59,200	59,300	0.2	59,900	59,700	-0.3
Economic families	82,300	83,300	1.2	84,100	84,600	0.6	87,900	88,300	0.5
Persons not in an economic family	32,300	32,400	0.3	31,000	30,600	-1.3	31,600	31,300	-0.9
<b>Median income tax</b>									
Economic families and persons not in an economic family	6,500	6,600	1.5	6,300	6,300	0.0	6,900	6,900	0.0
Economic families	10,300	10,500	1.9	10,900	11,000	0.9	11,500	11,700	1.7
Persons not in an economic family	2,600	2,700	3.8	2,300	2,300	0.0	3,100	2,700	-12.9
<b>Median after-tax income</b>									
Economic families and persons not in an economic family	52,200	52,500	0.6	52,600	52,600	0.0	53,300	52,900	-0.8
Economic families	71,300	71,300	0.0	73,000	73,100	0.1	74,500	75,100	0.8
Persons not in an economic family	29,200	29,300	0.3	28,300	28,100	-0.7	28,400	28,400	0.0
	<b>Unrevised</b>	<b>Revised</b>	<b>Change</b>	<b>Unrevised</b>	<b>Revised</b>	<b>Change</b>	<b>Unrevised</b>	<b>Revised</b>	<b>Change</b>
			percentage points			percentage points			percentage points
	%			%			%		
<b>Percentage of persons in poverty or low income</b>									
Poverty rate (2018-base MBM)	..	..	..	16.2	16.4	0.2	12.1	12.0	-0.1
Poverty rate (2008-base MBM)	13.4	13.3	-0.1*	12.9	13.2	0.3*	9.8	9.8	0.0
Low-income rate (LIM-AT)	14.8	14.9	0.1	16.1	16.2	0.1	15.7	15.1	-0.6*

.. not available for a specific reference period

\* denotes changes that are statistically significant at the 95% confidence level

Source: Statistics Canada, Canadian Income Survey. Tables 11-10-0190-01 and 11-10-0135-01.

**Table 7.14**  
**Comparison of revised and unrevised income, poverty and low-income estimates, New Brunswick, 2013, 2016 and 2019**

	2013			2016			2019		
	Unrevised	Revised	Change	Unrevised	Revised	Change	Unrevised	Revised	Change
	2019 constant dollars		%	2019 constant dollars		%	2019 constant dollars		%
<b>Median market income</b>									
Economic families and persons not in an economic family	44,400	44,400	0.0	44,600	43,400	-2.7	47,000	44,600	-5.1*
Economic families	63,000	64,400	2.2	63,900	64,000	0.2	66,900	67,300	0.6
Persons not in an economic family	20,900	20,900	0.0	18,900	18,800	-0.5	21,200	20,900	-1.4
<b>Median government transfers</b>									
Economic families and persons not in an economic family	9,400	9,400	0.0	10,400	10,500	1.0	12,200	12,100	-0.8*
Economic families	11,700	11,900	1.7	12,400	12,500	0.8	13,600	13,500	-0.7
Persons not in an economic family	5,500	5,500	0.0	7,600	7,600	0.0	10,400	10,400	0.0
<b>Median total income</b>									
Economic families and persons not in an economic family	57,200	57,200	0.0	59,800	58,200	-2.7	63,700	60,700	-4.7*
Economic families	76,300	77,400	1.4	79,300	79,400	0.1	82,900	83,300	0.5
Persons not in an economic family	29,600	29,600	0.0	28,500	28,500	0.0	32,200	31,700	-1.6
<b>Median income tax</b>									
Economic families and persons not in an economic family	5,900	6,000	1.7	5,900	5,600	-5.1	6,800	6,500	-4.4*
Economic families	9,000	9,000	0.0	9,700	9,800	1.0	10,400	10,400	0.0
Persons not in an economic family	2,300	2,300	0.0	1,500	1,500	0.0	2,600	2,400	-7.7
<b>Median after-tax income</b>									
Economic families and persons not in an economic family	51,900	51,900	0.0	53,900	52,700	-2.2	56,400	54,400	-3.5*
Economic families	67,600	68,400	1.2	69,200	69,600	0.6	71,800	72,700	1.3
Persons not in an economic family	27,700	27,700	0.0	26,600	26,600	0.0	29,000	28,700	-1.0
	<b>Unrevised</b>	<b>Revised</b>	<b>Change</b>	<b>Unrevised</b>	<b>Revised</b>	<b>Change</b>	<b>Unrevised</b>	<b>Revised</b>	<b>Change</b>
			percentage points			percentage points			percentage points
	%			%			%		
<b>Percentage of persons in poverty or low income</b>									
Poverty rate (2018-base MBM)	..	..	..	13.6	13.9	0.3*	9.4	9.9	0.5*
Poverty rate (2008-base MBM)	12.9	12.8	-0.1	11.8	12.1	0.3*	7.8	8.1	0.3
Low-income rate (LIM-AT)	14.7	14.5	-0.2*	14.7	15.0	0.3*	14.9	15.3	0.4*

.. not available for a specific reference period

\* denotes changes that are statistically significant at the 95% confidence level

Source: Statistics Canada, Canadian Income Survey. Tables 11-10-0190-01 and 11-10-0135-01.

**Table 7.15**  
**Comparison of revised and unrevised income, poverty and low-income estimates, Quebec, 2013, 2016 and 2019**

	2013			2016			2019		
	Unrevised	Revised	Change	Unrevised	Revised	Change	Unrevised	Revised	Change
	2019 constant dollars			2019 constant dollars			2019 constant dollars		
			%			%			%
<b>Median market income</b>									
Economic families and persons not in an economic family	45,800	46,000	0.4	46,900	47,000	0.2	49,800	49,600	-0.4
Economic families	69,500	70,100	0.9*	70,600	71,200	0.8	77,800	78,600	1.0
Persons not in an economic family	21,500	21,800	1.4	23,300	23,600	1.3	22,200	22,200	0.0
<b>Median government transfers</b>									
Economic families and persons not in an economic family	8,700	8,700	0.0	9,900	9,800	-1.0*	10,100	10,000	-1.0
Economic families	10,000	9,900	-1.0	12,000	12,000	0.0	11,800	11,700	-0.8
Persons not in an economic family	5,200	5,300	1.9	4,700	4,700	0.0	7,400	7,300	-1.4
<b>Median total income</b>									
Economic families and persons not in an economic family	58,400	58,700	0.5	59,300	59,200	-0.2	63,400	62,700	-1.1*
Economic families	83,200	83,400	0.2	85,800	86,100	0.3	91,700	92,600	1.0
Persons not in an economic family	30,800	31,000	0.6	31,600	31,700	0.3	31,200	31,100	-0.3
<b>Median income tax</b>									
Economic families and persons not in an economic family	6,300	6,300	0.0	6,400	6,500	1.6	6,800	6,700	-1.5
Economic families	10,600	10,700	0.9	11,200	11,300	0.9	11,700	11,800	0.9
Persons not in an economic family	2,000	2,100	5.0	2,400	2,500	4.2	1,700	1,700	0.0
<b>Median after-tax income</b>									
Economic families and persons not in an economic family	52,100	52,200	0.2	52,500	52,300	-0.4	55,600	55,000	-1.1*
Economic families	72,000	72,300	0.4	74,500	75,000	0.7*	79,600	80,600	1.3*
Persons not in an economic family	28,500	28,600	0.4	28,900	28,900	0.0	29,100	29,000	-0.3
	Unrevised	Revised	Change	Unrevised	Revised	Change	Unrevised	Revised	Change
	percentage points			percentage points			percentage points		
	%		%	%		%	%		%
<b>Percentage of persons in poverty or low income</b>									
Poverty rate (2018-base MBM)	..	..	..	10.9	11.0	0.1*	8.7	8.9	0.2*
Poverty rate (2008-base MBM)	10.8	10.7	-0.1	8.6	8.5	-0.1*	7.3	7.4	0.1
Low-income rate (LIM-AT)	14.1	13.9	-0.2*	14.0	13.8	-0.2*	13.5	13.4	-0.1*

.. not available for a specific reference period

\* denotes changes that are statistically significant at the 95% confidence level

Source: Statistics Canada, Canadian Income Survey. Tables 11-10-0190-01 and 11-10-0135-01.

**Table 7.16**  
**Comparison of revised and unrevised income, poverty and low-income estimates, Ontario, 2013, 2016 and 2019**

	2013			2016			2019		
	Unrevised	Revised	Change	Unrevised	Revised	Change	Unrevised	Revised	Change
	2019 constant dollars			2019 constant dollars			2019 constant dollars		
			%			%			%
<b>Median market income</b>									
Economic families and persons not in an economic family	57,000	56,900	-0.2	58,900	58,400	-0.8	61,900	60,800	-1.8*
Economic families	81,800	82,100	0.4	84,600	85,200	0.7	88,400	89,000	0.7
Persons not in an economic family	26,500	26,900	1.5	25,700	26,100	1.6	30,400	29,100	-4.3
<b>Median government transfers</b>									
Economic families and persons not in an economic family	5,900	5,800	-1.7	7,300	7,200	-1.4*	7,900	7,800	-1.3
Economic families	7,800	7,800	0.0	8,900	8,800	-1.1	9,400	9,300	-1.1
Persons not in an economic family	1,600	1,600	0.0	1,700	1,700	0.0	2,500	2,400	-4.0
<b>Median total income</b>									
Economic families and persons not in an economic family	67,500	67,400	-0.1	70,800	69,900	-1.3*	75,600	73,400	-2.9*
Economic families	92,700	93,300	0.6*	96,700	97,600	0.9*	102,200	102,200	0.0
Persons not in an economic family	35,200	35,300	0.3	33,000	33,300	0.9	37,200	36,900	-0.8
<b>Median income tax</b>									
Economic families and persons not in an economic family	6,900	6,900	0.0	6,800	6,700	-1.5*	7,800	7,600	-2.6*
Economic families	10,400	10,500	1.0*	10,700	10,800	0.9	11,900	11,900	0.0
Persons not in an economic family	2,900	3,000	3.4	2,200	2,300	4.5	3,200	3,000	-6.3
<b>Median after-tax income</b>									
Economic families and persons not in an economic family	61,100	60,900	-0.3	62,900	62,300	-1.0*	66,600	64,600	-3.0*
Economic families	81,700	82,100	0.5*	85,600	86,200	0.7*	89,900	89,900	0.0
Persons not in an economic family	31,900	32,200	0.9	31,000	31,300	1.0	34,200	34,000	-0.6
	Unrevised	Revised	Change	Unrevised	Revised	Change	Unrevised	Revised	Change
	percentage points			percentage points			percentage points		
	%		%	%		%	%		%
<b>Percentage of persons in poverty or low income</b>									
Poverty rate (2018-base MBM)	..	..	..	13.6	13.7	0.1	10.9	10.9	0.0
Poverty rate (2008-base MBM)	13.9	13.9	0.0	11.8	11.8	0.0	9.2	9.3	0.1
Low-income rate (LIM-AT)	14.2	14.1	-0.1*	13.7	13.7	0.0	12.3	12.2	-0.1

.. not available for a specific reference period

\* denotes changes that are statistically significant at the 95% confidence level

Source: Statistics Canada, Canadian Income Survey. Tables 11-10-0190-01 and 11-10-0135-01.

**Table 7.17**  
**Comparison of revised and unrevised income, poverty and low-income estimates, Manitoba, 2013, 2016 and 2019**

	2013			2016			2019		
	Unrevised	Revised	Change	Unrevised	Revised	Change	Unrevised	Revised	Change
	2019 constant dollars			2019 constant dollars			2019 constant dollars		
<b>Median market income</b>									
Economic families and persons not in an economic family	57,400	57,300	-0.2	56,300	56,200	-0.2	56,600	55,500	-1.9*
Economic families	80,900	80,900	0.0	79,000	79,200	0.3	79,000	77,600	-1.8
Persons not in an economic family	28,000	28,000	0.0	28,100	28,000	-0.4	28,800	26,900	-6.6*
<b>Median government transfers</b>									
Economic families and persons not in an economic family	4,900	4,900	0.0	6,900	6,900	0.0	8,300	8,400	1.2
Economic families	5,900	5,900	0.0	8,300	8,500	2.4	10,100	10,400	3.0
Persons not in an economic family	1,500	1,400	-6.7	1,900	1,700	-10.5	1,700	2,000	17.6
<b>Median total income</b>									
Economic families and persons not in an economic family	67,600	67,600	0.0	69,100	69,100	0.0	70,300	69,300	-1.4
Economic families	90,000	90,100	0.1	91,700	91,900	0.2	93,300	92,500	-0.9
Persons not in an economic family	35,600	35,500	-0.3	36,400	36,200	-0.5	36,700	35,400	-3.5*
<b>Median income tax</b>									
Economic families and persons not in an economic family	8,100	8,100	0.0	8,400	8,400	0.0	8,800	8,500	-3.4*
Economic families	12,000	12,000	0.0	12,300	12,300	0.0	12,500	12,200	-2.4
Persons not in an economic family	3,900	3,900	0.0	3,900	3,800	-2.6	3,900	3,600	-7.7
<b>Median after-tax income</b>									
Economic families and persons not in an economic family	59,200	59,200	0.0	60,400	60,400	0.0	61,300	60,200	-1.8*
Economic families	77,600	77,600	0.0	79,000	79,200	0.3	79,900	79,600	-0.4
Persons not in an economic family	32,200	32,100	-0.3	32,100	31,900	-0.6	32,400	31,300	-3.4
	<b>Unrevised</b>	<b>Revised</b>	<b>Change</b>	<b>Unrevised</b>	<b>Revised</b>	<b>Change</b>	<b>Unrevised</b>	<b>Revised</b>	<b>Change</b>
			percentage			percentage			percentage
			points			points			points
	%			%			%		
<b>Percentage of persons in poverty or low income</b>									
Poverty rate (2018-base MBM)	..	..	..	12.3	12.4	0.1*	11.4	11.5	0.1*
Poverty rate (2008-base MBM)	11.2	11.2	0.0	9.4	9.5	0.1*	10.2	10.0	-0.2
Low-income rate (LIM-AT)	14.3	14.2	-0.1*	13.3	13.3	0.0*	15.3	15.1	-0.2*

.. not available for a specific reference period

\* denotes changes that are statistically significant at the 95% confidence level

Source: Statistics Canada, Canadian Income Survey. Tables 11-10-0190-01 and 11-10-0135-01.

**Table 7.18**  
**Comparison of revised and unrevised income, poverty and low-income estimates, Saskatchewan, 2013, 2016 and 2019**

	2013			2016			2019		
	Unrevised	Revised	Change	Unrevised	Revised	Change	Unrevised	Revised	Change
	2019 constant dollars			2019 constant dollars			2019 constant dollars		
			%			%			%
<b>Median market income</b>									
Economic families and persons not in an economic family	61,400	62,400	1.6	61,100	62,600	2.5*	57,900	58,500	1.0
Economic families	90,200	90,200	0.0	89,900	90,600	0.8	83,900	84,100	0.2
Persons not in an economic family	29,100	29,600	1.7	27,400	27,400	0.0	26,500	26,000	-1.9
<b>Median government transfers</b>									
Economic families and persons not in an economic family	3,300	3,500	6.1	5,600	6,200	10.7*	6,900	7,600	10.1*
Economic families	4,200	4,200	0.0	6,900	7,100	2.9	9,700	9,700	0.0
Persons not in an economic family	1,400	1,600	14.3	1,500	1,900	26.7	1,600	2,300	43.8*
<b>Median total income</b>									
Economic families and persons not in an economic family	71,900	72,600	1.0*	72,100	73,400	1.8*	71,700	73,000	1.8*
Economic families	99,300	99,500	0.2	99,600	100,700	1.1	97,400	98,700	1.3*
Persons not in an economic family	36,300	36,600	0.8	34,500	35,100	1.7	35,400	35,400	0.0
<b>Median income tax</b>									
Economic families and persons not in an economic family	7,700	7,800	1.3	7,600	7,800	2.6*	7,700	7,700	0.0
Economic families	12,100	12,100	0.0	12,900	12,900	0.0	11,900	12,000	0.8
Persons not in an economic family	2,900	2,900	0.0	2,900	3,000	3.4	2,700	2,700	0.0
<b>Median after-tax income</b>									
Economic families and persons not in an economic family	63,000	63,800	1.3	63,200	65,100	3.0*	62,700	64,000	2.1*
Economic families	86,700	86,700	0.0	87,300	87,800	0.6	86,000	86,700	0.8
Persons not in an economic family	33,300	33,400	0.3	32,400	32,800	1.2	32,500	32,700	0.6
	Unrevised	Revised	Change	Unrevised	Revised	Change	Unrevised	Revised	Change
	percentage points			percentage points			percentage points		
	%		%	%		%	%		%
<b>Percentage of persons in poverty or low income</b>									
Poverty rate (2018-base MBM)	..	..	..	11.5	11.1	-0.4*	12.4	11.9	-0.5
Poverty rate (2008-base MBM)	10.2	10.1	-0.1*	9.2	8.8	-0.4*	9.2	8.6	-0.6*
Low-income rate (LIM-AT)	12.6	12.5	-0.1	11.6	11.4	-0.2*	13.5	13.1	-0.4

.. not available for a specific reference period

\* denotes changes that are statistically significant at the 95% confidence level

Source: Statistics Canada, Canadian Income Survey. Tables 11-10-0190-01 and 11-10-0135-01.

**Table 7.19**  
**Comparison of revised and unrevised income, poverty and low-income estimates, Alberta, 2013, 2016 and 2019**

	2013			2016			2019		
	Unrevised	Revised	Change	Unrevised	Revised	Change	Unrevised	Revised	Change
	2019 constant dollars			2019 constant dollars			2019 constant dollars		
			%			%			%
<b>Median market income</b>									
Economic families and persons not in an economic family	81,100	80,100	-1.2	75,300	77,000	2.3*	70,600	71,900	1.8*
Economic families	111,300	109,100	-2.0*	102,800	104,100	1.3	102,400	105,200	2.7
Persons not in an economic family	40,500	40,500	0.0	35,000	35,400	1.1	36,400	36,800	1.1
<b>Median government transfers</b>									
Economic families and persons not in an economic family	1,300	1,300	0.0	3,700	3,800	2.7	5,300	5,500	3.8
Economic families	2,700	2,700	0.0	6,300	6,200	-1.6	7,500	7,600	1.3
Persons not in an economic family	300	300	0.0	400	400	0.0	1,000	1,000	0.0
<b>Median total income</b>									
Economic families and persons not in an economic family	90,000	87,900	-2.3*	84,400	87,000	3.1*	82,400	84,000	1.9*
Economic families	118,800	117,600	-1.0	114,900	115,900	0.9	114,900	117,800	2.5*
Persons not in an economic family	44,500	44,500	0.0	41,000	41,800	2.0	41,900	42,800	2.1
<b>Median income tax</b>									
Economic families and persons not in an economic family	10,900	10,900	0.0	10,500	10,900	3.8*	10,200	10,400	2.0
Economic families	16,300	16,000	-1.8	15,500	16,200	4.5	15,400	15,700	1.9
Persons not in an economic family	4,700	4,700	0.0	4,100	4,100	0.0	4,000	4,200	5.0
<b>Median after-tax income</b>									
Economic families and persons not in an economic family	76,800	76,500	-0.4	74,300	75,300	1.3	72,500	73,900	1.9*
Economic families	101,400	100,600	-0.8	98,300	99,500	1.2*	99,400	101,600	2.2*
Persons not in an economic family	39,400	39,400	0.0	36,400	37,200	2.2	37,500	38,100	1.6
	Unrevised	Revised	Change	Unrevised	Revised	Change	Unrevised	Revised	Change
	percentage points			percentage points			percentage points		
	%		%	%		%	%		%
<b>Percentage of persons in poverty or low income</b>									
Poverty rate (2018-base MBM)	..	..	..	10.8	10.1	-0.7*	8.2	7.7	-0.5
Poverty rate (2008-base MBM)	7.9	8.2	0.3*	8.6	8.0	-0.6*	6.3	6.0	-0.3
Low-income rate (LIM-AT)	7.8	8.1	0.3*	8.1	7.4	-0.7*	7.1	6.7	-0.4

.. not available for a specific reference period

\* denotes changes that are statistically significant at the 95% confidence level

Source: Statistics Canada, Canadian Income Survey. Tables 11-10-0190-01 and 11-10-0135-01.

**Table 7.20**  
**Comparison of revised and unrevised income, poverty and low-income estimates, British Columbia, 2013, 2016 and 2019**

	2013			2016			2019		
	Unrevised	Revised	Change	Unrevised	Revised	Change	Unrevised	Revised	Change
	2019 constant dollars		%	2019 constant dollars		%	2019 constant dollars		%
<b>Median market income</b>									
Economic families and persons not in an economic family	56,300	55,800	-0.9	55,100	53,100	-3.6*	61,300	57,000	-7.0*
Economic families	81,400	81,400	0.0	83,300	82,300	-1.2	91,800	89,500	-2.5*
Persons not in an economic family	26,900	26,800	-0.4	24,700	23,700	-4.0	27,700	26,200	-5.4*
<b>Median government transfers</b>									
Economic families and persons not in an economic family	4,300	4,200	-2.3	6,000	5,900	-1.7	5,400	5,300	-1.9
Economic families	6,400	6,600	3.1	8,300	8,500	2.4	7,900	8,100	2.5
Persons not in an economic family	700	600	-14.3	600	600	0.0	1,300	1,200	-7.7
<b>Median total income</b>									
Economic families and persons not in an economic family	66,500	65,300	-1.8	66,300	64,200	-3.2*	73,600	70,600	-4.1*
Economic families	92,700	92,900	0.2	97,300	96,300	-1.0	103,100	101,400	-1.6*
Persons not in an economic family	34,900	34,500	-1.1	32,500	31,700	-2.5	36,000	34,600	-3.9
<b>Median income tax</b>									
Economic families and persons not in an economic family	6,200	6,000	-3.2	5,900	5,500	-6.8*	7,100	6,500	-8.5*
Economic families	9,700	9,700	0.0	10,400	10,300	-1.0	12,100	11,800	-2.5*
Persons not in an economic family	2,400	2,300	-4.2	1,900	1,800	-5.3	2,600	2,400	-7.7
<b>Median after-tax income</b>									
Economic families and persons not in an economic family	59,700	59,200	-0.8	60,200	58,300	-3.2*	65,700	62,600	-4.7*
Economic families	82,300	82,300	0.0	87,000	86,300	-0.8	90,100	89,400	-0.8
Persons not in an economic family	31,700	31,500	-0.6	30,100	29,500	-2.0	32,200	32,000	-0.6
	Unrevised	Revised	Change	Unrevised	Revised	Change	Unrevised	Revised	Change
	%		percentage points	%		percentage points	%		percentage points
<b>Percentage of persons in poverty or low income</b>									
Poverty rate (2018-base MBM)	..	..	..	15.3	16.0	0.7*	10.8	11.9	1.1*
Poverty rate (2008-base MBM)	13.0	13.1	0.1*	12.0	12.7	0.7*	7.6	8.6	1.0*
Low-income rate (LIM-AT)	14.2	14.3	0.1	12.9	13.4	0.5*	10.8	11.5	0.7*

.. not available for a specific reference period

\* denotes changes that are statistically significant at the 95% confidence level

Source: Statistics Canada, Canadian Income Survey. Tables 11-10-0190-01 and 11-10-0135-01.