



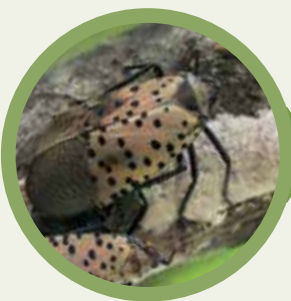
Lawrence Barringer,  
Pennsylvania Department of Agriculture, Bugwood.org



# Spot it? Snap, catch and report it

**Spotted lanternfly (SLF)** is present in the United States and getting closer to the Canadian border. It could be devastating for Canada's wine, fruit and forest industries.

## WHAT TO LOOK FOR - LIFECYCLE



**EGG LAYING**  
SEP-NOV



Photo Credit:  
Amanda Roe,  
Natural Resources  
Canada

**EGG MASS**  
OCT-JUN



**EARLY STAGE NYMPH**  
MAY-JUL



**LATE STAGE NYMPH**  
JUL-SEP



**ADULTS**  
JUL-DEC

## WHERE TO LOOK FOR IT

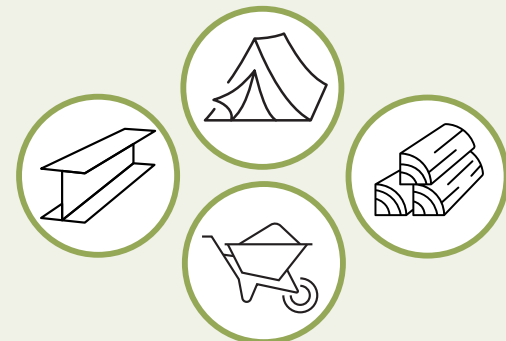
### OVER 100 SPECIES OF TREES AND PLANTS



### COMMERCIAL AND LEISURE VEHICLES



### OUTDOOR ITEMS



If you think you have found the spotted lanternfly pest or egg masses in Canada, report it to the Canadian Food Inspection Agency. Learn more at [Canada.ca/spotted-lanternfly](https://Canada.ca/spotted-lanternfly)



Canadian Food  
Inspection Agency

Agence canadienne  
d'inspection des aliments

