



Japanese beetle (*Popillia japonica*)

If you think you have found an insect which you suspect is Japanese beetle or if you have found signs of Japanese beetle feeding damage, **anywhere in British Columbia (BC)**, report your finds to the Canadian Food Inspection Agency (CFIA) as soon as possible by:

Calling **604-292-5742** or Emailing BCPF.Japanese.Beetle@inspection.gc.ca



Identifying features of adult Japanese beetle:

- Oval shape when looked at from above
- Approx. 10 mm long and 6 mm wide
- Head and thorax are metallic green
- Wing coverings are metallic copper-brown
- White tufts of hair along the sides and rear of the abdomen

Feeding damage - signs to look for:

- Lacy, skeletonized feeding damage on leaves
- On some plants flowers, the beetles chew out large irregularly shaped portions

Aussi disponible en français



Photo Credits: Clemson University (Bugwood.org), T.Kimoto (CFIA)



NOT Japanese beetle

The following insects are “look-a-likes” which are commonly mistaken for Japanese beetle.

(Photos not to scale)



**European
chafer beetle**



Stink bug



**Green bottle
fly**



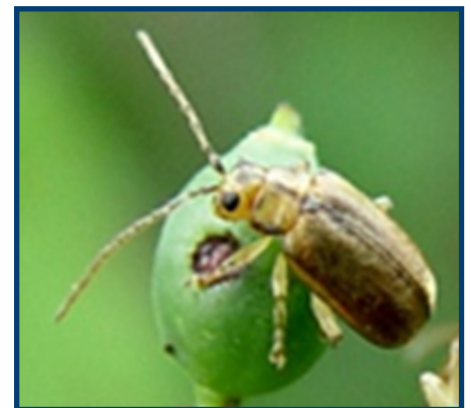
**10-lined June
beetle**



**St. John's wort
beetle**



**Brown marmorated
stink bug**



**Viburnum
leaf beetle**

Photo Credits: D. Holden (CFIA), M. Reding, P. Weston, C. Moorehead, D. R. Lance – USDA APHIS PPQ (Bugwood.org)