

# RESPIRATORY VIRUS DETECTION REPORT

April 9 to April 15, 2023  
(Surveillance Week 2023-15)



Please note that the Respiratory Virus Detection Surveillance System (RVDSS) is a sentinel laboratory surveillance system that does not capture all respiratory virus testing performed in Canada; differences may exist between the data presented in this report and provincial/territorial epidemiological reports. SARS-CoV-2 laboratory data is included in this report to facilitate the comparison of positivity with other respiratory viruses. Interpretation should be made with caution as testing practices differ among viruses.

For additional SARS-CoV-2 surveillance information, please refer to the [COVID-19 epidemiology update](#).

## Overall Summary

In week 15 (week ending April 15, 2023) in Canada, participating RVDSS laboratories reported 4,744 detections of SARS-CoV-2 from 41,796 tests (11.4% positive). Among non-SARS-CoV-2 respiratory viruses, where test volumes are lower (range of 6,512 to 22,968 tests), activity of nearly all viruses is within or below expected levels.

- Activity of influenza remains low at inter-seasonal levels.
  - Influenza B activity has increased in recent weeks but remains slightly below expected levels (438 detections; 1.9% positive). Influenza A activity is lower and far below expected levels (139 detections; 0.6% positive).
- Activity of all other non-SARS-CoV-2 respiratory viruses is near or below expected levels typical of this time of year.
- 33/35 sentinel laboratories reported surveillance data

## Abbreviations

ADV: Adenovirus

Atl: Atlantic Canada

BC: British Columbia

Can: Canada

EORLA: Eastern Ontario Regional Laboratory Association

EV/RV: Enterovirus/Rhinovirus

Flu: Influenza

Flu A(H1N1)pdm09: Influenza A(H1N1)pdm09

Flu A(H3): Influenza A(H3N2)

Flu A (UnS): Influenza A(Unsubtyped)

HCoV: Human coronavirus 229E/OC43/NL63/HKU1

HMPV: Human metapneumovirus

HPIV: Human parainfluenza virus

HSC: Health Sciences Centre

N.C.: Data not collected

N.R.: Data not reported for current week

ON: Ontario

PR: Prairies

P.H.O.L.: Public Health Ontario Laboratory

QC: Quebec

RSV: Respiratory syncytial virus

RVDSS: Respiratory Virus Detection Surveillance System

SARS-CoV-2: Severe acute respiratory syndrome coronavirus 2

Terr: Territories of Canada

UHN: University Health Network

© His Majesty the King in Right of Canada, as represented by the Minister of Health, 2021

ISSN: 2564-2359 | Cat.: HP38-7E-PDF | Pub.: 210284

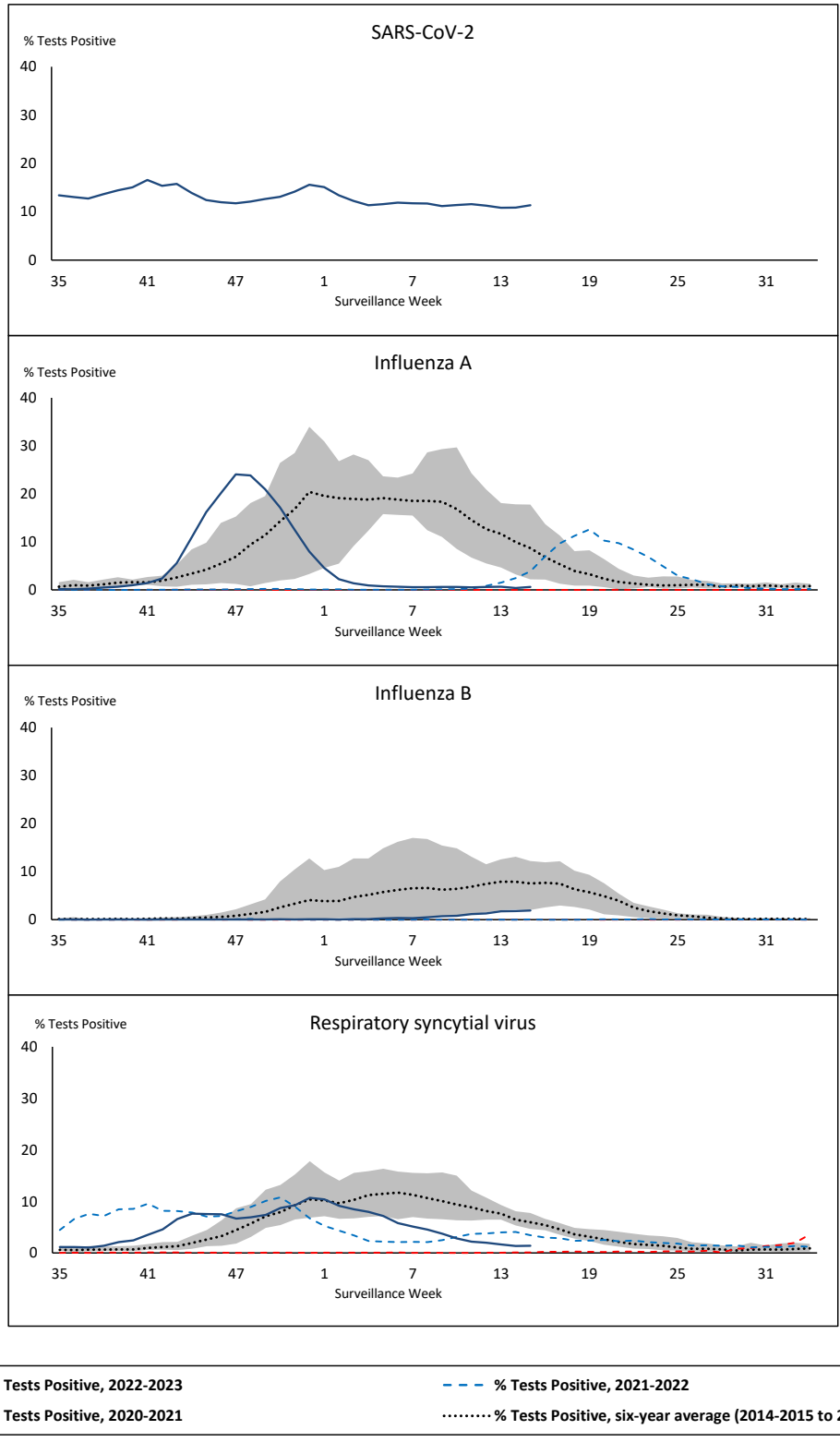


Public Health  
Agency of Canada

Agence de la santé  
publique du Canada

Canada

**Figure 1: Positive severe acute respiratory syndrome coronavirus 2 (SARS-CoV-2), influenza, and respiratory syncytial virus tests (%) reported by participating laboratories in Canada by surveillance week compared to average and range from 2014-2015 to 2019-2020 season**



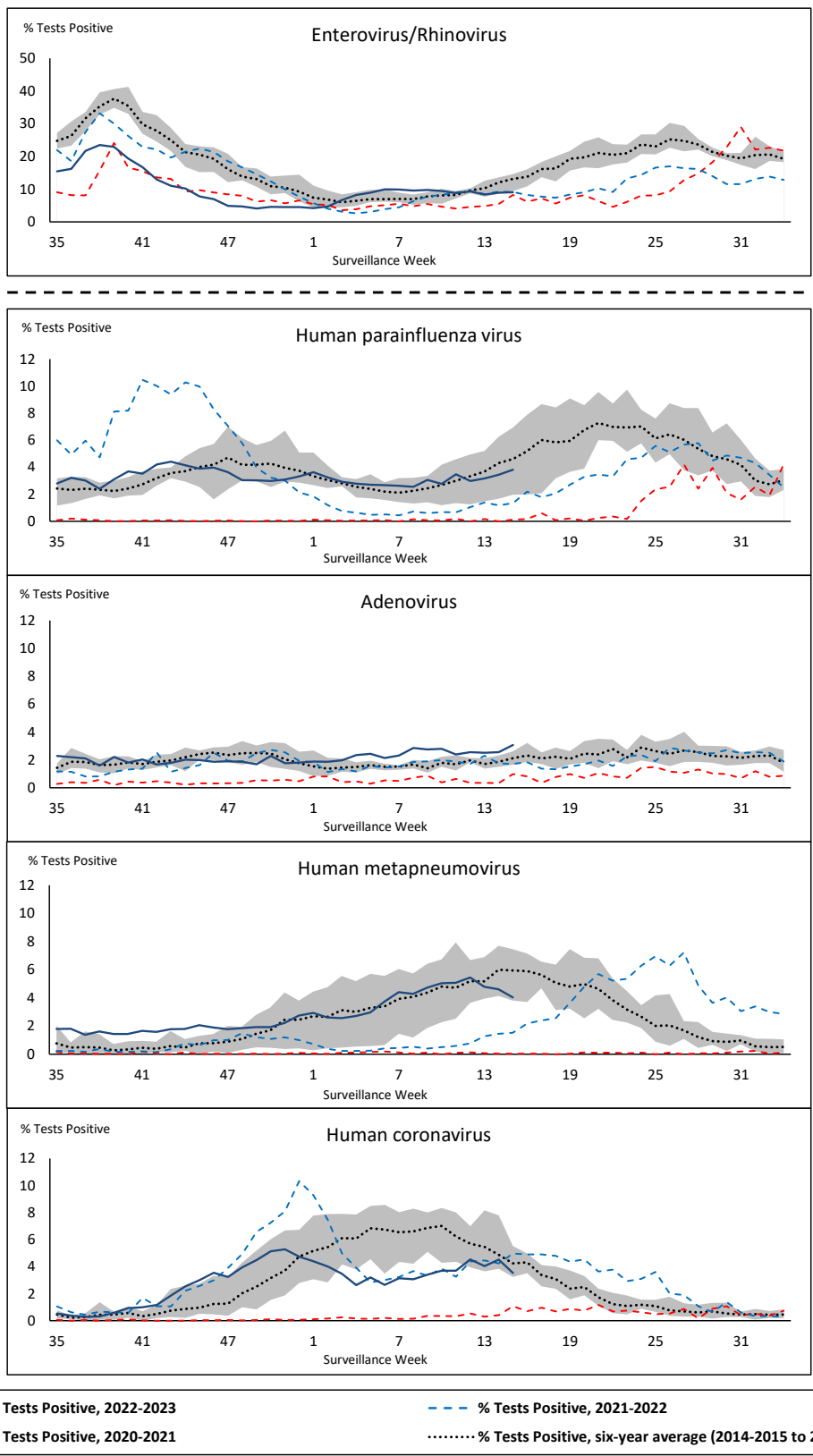
Shaded area represents the maximum and minimum % of respiratory virus tests positive reported by week from seasons 2014-2015 to 2019-2020

Note: Changes to testing practices during the COVID-19 pandemic may cause substantial changes to indicator estimates from previous years. Collection of laboratory testing practice meta-data to understand these changes is ongoing. Interpret trends with caution.

Note: SARS-CoV-2 surveillance was integrated into RVDSS at the beginning of the 2022-2023 season; no appropriate data is available for historical comparison.

Note: Data from week 11 of the 2019-2020 season onwards are excluded from the historical comparison due to the COVID-19 pandemic.

**Figure 2: Positive tests (%) of other respiratory viruses reported by participating laboratories in Canada by surveillance week compared to average and range from 2014-2015 to 2019-2020 season**



Shaded area represents the maximum and minimum % of respiratory virus tests positive reported by week from seasons 2014-2015 to 2019-2020

Note: Changes to testing practices during the COVID-19 pandemic may cause substantial changes to indicator estimates from previous years. Collection of laboratory testing practice meta-data to understand these changes is ongoing. Interpret trends with caution.

Note: Data from week 11 of the 2019-2020 season onwards are excluded from the historical comparison due to the COVID-19 pandemic.

Note: % Tests Positive scale changes across the dashed line

**Table 1: Respiratory virus detections for the week ending April 15, 2023 (surveillance week 2023-15)**

Reporting Laboratory	SARS-CoV-2 Tested	SARS-CoV-2 Positive	Flu Tested	A(H1)pdm09 Positive	A(H3) Positive	A(UnS) Positive	Total Flu A Positive	Total Flu B Positive	RSV Tested	RSV Positive	HPIV Tested	HPIV 1 Positive	HPIV 2 Positive	HPIV 3 Positive	HPIV 4 Positive	Other HPIV Positive	ADV Tested	ADV Positive	HMPV Tested	HMPV Positive	EV/RV Tested	EV/RV Positive	HCoV Tested	HCoV Positive	
Newfoundland	582	76	380	0	0	0	0	0	380	30	380	3	0	22	6	0	380	4	380	12	380	37	380	9	
Prince Edward Island	548	69	122	0	0	1	1	0	122	8	10	2	1	0	1	0	10	2	10	0	10	4	10	0	
Nova Scotia	1759	332	889	0	0	1	1	2	889	7	19	0	0	1	0	0	19	0	19	0	19	0	19	3	
New Brunswick	882	105	784	0	0	2	2	3	773	3	73	3	0	3	2	0	73	5	73	4	73	12	73	5	
<b>Atlantic</b>	<b>3771</b>	<b>582</b>	<b>2175</b>	<b>0</b>	<b>0</b>	<b>4</b>	<b>4</b>	<b>5</b>	<b>2164</b>	<b>48</b>	<b>482</b>	<b>8</b>	<b>4</b>	<b>25</b>	<b>7</b>	<b>0</b>	<b>482</b>	<b>11</b>	<b>482</b>	<b>16</b>	<b>482</b>	<b>53</b>	<b>482</b>	<b>17</b>	
Région Nord-Est	1965	226	1434	0	0	11	11	5	370	8	58	3	0	2	0	0	58	6	58	2	N.C.	N.C.	58	7	
Québec-Chaudière-Appalaches	3402	288	569	0	0	21	21	15	546	5	174	0	0	3	0	0	187	19	174	7	N.C.	N.C.	174	9	
Centre-du-Québec	2947	384	308	0	0	9	9	8	306	11	22	0	0	1	0	0	22	5	22	0	N.C.	N.C.	22	1	
Montréal-Laval	3276	324	2694	0	0	16	16	160	1454	23	539	1	1	19	1	0	539	24	542	14	N.C.	N.C.	539	22	
Ouest du Québec	1995	247	527	0	0	2	2	12	507	9	25	0	0	1	0	0	25	6	25	0	N.C.	N.C.	25	3	
Montérégie	2859	263	1342	0	0	28	28	29	989	18	1	0	0	0	0	0	1	0	1	0	N.C.	N.C.	1	0	
<b>Province of Québec</b>	<b>16444</b>	<b>1732</b>	<b>6874</b>	<b>0</b>	<b>0</b>	<b>87</b>	<b>87</b>	<b>229</b>	<b>4172</b>	<b>74</b>	<b>819</b>	<b>4</b>	<b>1</b>	<b>26</b>	<b>1</b>	<b>0</b>	<b>832</b>	<b>60</b>	<b>822</b>	<b>23</b>	<b>N.C.</b>	<b>N.C.</b>	<b>819</b>	<b>42</b>	
P.H.O.L. - Ottawa	272	78	128	0	0	0	0	1	128	0	99	0	0	0	0	1	99	0	99	4	99	10	99	9	
EOURLA	1675	90	344	0	0	4	4	3	344	6	32	0	0	5	0	0	32	0	32	2	32	5	32	4	
P.H.O.L. - Kingston	390	48	76	0	0	0	0	0	76	0	64	0	0	0	0	4	64	0	64	4	64	5	64	4	
UHN / Mount Sinai Hospital	1477	131	540	1	0	0	1	6	540	0	29	0	0	3	0	0	29	0	29	0	29	0	29	0	
P.H.O.L. - Toronto	573	114	713	3	1	1	5	0	713	14	667	0	0	0	0	24	667	16	667	63	667	65	667	37	
Sick Kids Hospital - Toronto	N.R.	N.R.	N.R.	N.R.	N.R.	N.R.	N.R.	N.R.	N.R.	N.R.	N.R.	N.R.	N.R.	N.R.	N.R.	N.R.	N.R.	N.R.	N.R.	N.R.	N.R.	N.R.	N.R.	N.R.	N.R.
Shared Hospital Laboratory	1718	113	1718	2	1	1	4	30	1718	11	1724	0	0	0	0	22	1724	24	1723	35	1723	51	1723	22	
P.H.O.L. - Sault Ste. Marie	22	0	12	0	0	0	0	0	12	0	7	0	0	0	0	0	7	0	7	0	7	1	7	0	
P.H.O.L. - Timmins	63	1	5	0	0	0	0	0	5	1	5	0	0	0	0	1	5	0	5	0	5	0	5	0	
St. Joseph's - London	1442	98	550	0	0	1	1	5	550	3	60	0	0	0	0	6	60	0	60	1	60	18	60	3	
P.H.O.L. - London	545	80	219	0	0	0	0	1	219	2	192	0	0	0	0	6	192	5	192	16	192	32	192	6	
P.H.O.L. - Orillia	7	0	44	0	0	0	0	0	44	3	44	0	0	0	0	1	44	7	44	2	44	9	44	1	
P.H.O.L. - Thunder Bay	84	20	17	0	0	0	0	0	17	0	12	0	0	0	0	0	12	1	12	0	12	0	12	1	
P.H.O.L. - Sudbury	20	1	8	0	0	0	0	0	8	1	8	0	0	0	0	0	8	0	8	0	8	0	8	0	
P.H.O.L. - Hamilton	302	64	243	0	0	0	0	2	243	8	182	0	0	0	0	8	182	8	182	22	182	18	182	8	
P.H.O.L. - Peterborough	74	18	29	0	0	0	0	0	29	0	28	0	0	0	0	3	28	0	28	0	28	5	28	0	
St. Joseph's - Hamilton	1699	127	1382	0	0	5	5	57	1382	4	1382	0	0	14	0	0	1382	32	1382	48	1382	105	0	0	
Sault Area Hospital	114	10	114	0	0	0	0	1	114	5	55	0	0	1	0	0	55	1	55	3	55	6	55	1	
<b>Province of Ontario</b>	<b>10477</b>	<b>993</b>	<b>6142</b>	<b>6</b>	<b>2</b>	<b>12</b>	<b>20</b>	<b>106</b>	<b>6142</b>	<b>58</b>	<b>4590</b>	<b>0</b>	<b>0</b>	<b>23</b>	<b>0</b>	<b>76</b>	<b>4590</b>	<b>94</b>	<b>4589</b>	<b>200</b>	<b>4589</b>	<b>330</b>	<b>3207</b>	<b>96</b>	
Manitoba	1499	224	1157	0	0	6	6	4	1157	10	104	8	2	1	0	0	104	4	121	4	104	17	121	7	
Saskatchewan	1994	208	748	0	0	2	2	8	667	10	264	8	6	2	7	0	264	10	264	4	264	37	264	10	
Alberta	3751	320	2679	4	0	6	10	47	2514	17	1011	13	4	22	12	0	1011	26	1010	24	996	105	1011	34	
<b>Prairies</b>	<b>7244</b>	<b>752</b>	<b>4584</b>	<b>4</b>	<b>0</b>	<b>14</b>	<b>18</b>	<b>59</b>	<b>4338</b>	<b>37</b>	<b>1379</b>	<b>29</b>	<b>12</b>	<b>25</b>	<b>19</b>	<b>0</b>	<b>1379</b>	<b>40</b>	<b>1395</b>	<b>32</b>	<b>1364</b>	<b>159</b>	<b>1396</b>	<b>51</b>	
<b>British Columbia</b>	<b>3736</b>	<b>684</b>	<b>3104</b>	<b>2</b>	<b>0</b>	<b>0</b>	<b>10</b>	<b>14</b>	<b>2858</b>	<b>56</b>	<b>628</b>	<b>12</b>	<b>2</b>	<b>27</b>	<b>1</b>	<b>0</b>	<b>628</b>	<b>38</b>	<b>628</b>	<b>48</b>	<b>608</b>	<b>98</b>	<b>608</b>	<b>24</b>	
Yukon	N.R.	N.R.	N.R.	N.R.	N.R.	N.R.	N.R.	N.R.	N.R.	N.R.	N.C.	N.C.	N.C.	N.C.	N.C.	N.C.	N.C.	N.C.	N.C.	N.C.	N.C.	N.C.	N.C.	N.C.	
Northwest Territories	13	1	13	0	0	0	0	2	13	0	N.C.	N.C.	N.C.	N.C.	N.C.	N.C.	N.C.	N.C.	N.C.	N.C.	N.C.	13	1	N.C.	N.C.
Nunavut	111	0	76	0	0	0	0	23	76	5	N.C.	N.C.	N.C.	N.C.	N.C.	N.C.	N.C.	N.C.	N.C.	N.C.	N.C.	N.C.	N.C.	N.C.	
<b>Territories</b>	<b>124</b>	<b>1</b>	<b>89</b>	<b>0</b>	<b>0</b>	<b>0</b>	<b>0</b>	<b>25</b>	<b>89</b>	<b>5</b>	<b>N.C.</b>	<b>N.C.</b>	<b>N.C.</b>	<b>N.C.</b>	<b>N.C.</b>	<b>N.C.</b>	<b>N.C.</b>	<b>N.C.</b>	<b>N.C.</b>	<b>N.C.</b>	<b>13</b>	<b>1</b>	<b>N.C.</b>	<b>N.C.</b>	
<b>CANADA</b>	<b>41796</b>	<b>4744</b>	<b>22968</b>	<b>12</b>	<b>2</b>	<b>117</b>	<b>139</b>	<b>438</b>	<b>19763</b>	<b>278</b>	<b>7898</b>	<b>53</b>	<b>19</b>	<b>126</b>	<b>28</b>	<b>76</b>	<b>7911</b>	<b>243</b>	<b>7916</b>	<b>319</b>	<b>7056</b>	<b>641</b>	<b>6512</b>	<b>230</b>	

The data in the RVDSS report represent surveillance data available at the time of writing. Data missing from the current week are denoted by N.R. Data not collected by reporting lab denoted by N.C.

Some specimens from Yukon (YT) are sent to reference laboratories in British Columbia and reported results reflect specimens identified as originating from YT.

Results from British Columbia comprise of specimens from the following sites: Children's and Women's Hospital Laboratory, Fraser Health Medical Microbiology Laboratory, Island Health, Providence Health Care, Vancouver Coastal Health sites, Victoria General Hospital, BCCDC Public Health Laboratory, Interior Health Authority sites and Northern Health Authority sites.

Due to different testing protocols of laboratories across Canada, influenza A subtype detection counts may not be included in total influenza A detection counts. Total influenza A and B positive counts are used to calculate percentage of tests

Delays in the reporting of data may cause data to change retrospectively.

**Table 2: Cumulative respiratory virus detections from August 28, 2022 to April 15, 2023 (surveillance weeks 2022-35 to 2023-15)**

Reporting Laboratory	SARS-CoV-2 Tested	SARS-CoV-2 Positive	Flu Tested	A(H1)pdm09 Positive	A(H3) Positive	A(UnS) Positive	Total Flu A Positive	Total Flu B Positive	RSV Tested	RSV Positive	HPIV Tested	HPIV 1 Positive	HPIV 2 Positive	HPIV 3 Positive	HPIV 4 Positive	Other HPIV Positive	ADV Tested	ADV Positive	HMPV Tested	HMPV Positive	EV/RV Tested	EV/RV Positive	HCoV Tested	HCoV Positive
Newfoundland	18993	3523	10833	1	246	671	918	5	10833	500	10833	38	30	317	53	0	10833	210	10833	354	10833	889	10833	394
Prince Edward Island	32005	7158	3770	1	119	247	367	3	3770	377	1121	18	26	78	7	0	1121	70	1121	36	1121	334	1121	34
Nova Scotia	122367	24221	37897	0	4	3616	3620	8	37887	2368	1183	6	16	29	3	0	1189	44	1179	36	1189	216	1189	51
New Brunswick	102827	15229	45047	17	133	4431	4581	19	37084	2023	3217	12	28	142	7	0	3217	227	3217	157	3217	584	3162	204
<b>Atlantic</b>	<b>276192</b>	<b>50131</b>	<b>97547</b>	<b>19</b>	<b>502</b>	<b>8965</b>	<b>9486</b>	<b>35</b>	<b>89574</b>	<b>5268</b>	<b>16354</b>	<b>74</b>	<b>100</b>	<b>566</b>	<b>70</b>	<b>0</b>	<b>16360</b>	<b>551</b>	<b>16350</b>	<b>583</b>	<b>16360</b>	<b>2023</b>	<b>16305</b>	<b>683</b>
Région Nord-Est	83728	10417	47822	0	4	3801	3805	44	15035	1354	1303	20	4	77	0	0	1304	105	1295	86	N.C.	N.C.	1304	95
Québec-Chaudière-Appalaches	177380	17218	23484	0	0	2855	2855	83	22851	1877	6529	22	5	76	2	0	6958	558	6529	325	N.C.	N.C.	6529	326
Centre-du-Québec	141362	19686	14633	0	0	1772	1772	58	12896	962	911	13	0	41	4	0	911	110	911	71	N.C.	N.C.	911	66
Montréal-Laval	194744	24551	90617	0	9	6177	6186	1033	48609	2645	19905	129	19	429	16	0	19914	889	20042	734	N.C.	N.C.	19590	728
Ouest du Québec	108250	14186	21461	0	7	2186	2193	91	19224	1298	964	20	0	64	2	0	963	182	964	56	N.C.	N.C.	965	58
Montérégie	136620	15793	24987	0	0	1776	1776	120	22975	1148	130	0	0	2	0	0	130	4	130	6	N.C.	N.C.	130	3
<b>Province of Québec</b>	<b>842084</b>	<b>101851</b>	<b>223004</b>	<b>0</b>	<b>20</b>	<b>18567</b>	<b>18587</b>	<b>1429</b>	<b>141590</b>	<b>9284</b>	<b>29742</b>	<b>204</b>	<b>28</b>	<b>689</b>	<b>24</b>	<b>0</b>	<b>30180</b>	<b>1848</b>	<b>29871</b>	<b>1278</b>	<b>N.C.</b>	<b>N.C.</b>	<b>29429</b>	<b>1276</b>
P.H.O.L. - Ottawa	27876	6954	5174	17	136	66	214	2	5174	352	3601	0	0	0	0	79	3601	16	3601	107	3601	328	3601	165
EOURLA	83229	8368	15012	0	0	1399	1399	22	15012	1284	1226	9	3	52	16	0	1226	51	1226	57	1226	278	1226	84
P.H.O.L. - Kingston	28621	4719	2725	2	92	38	132	2	2724	179	2222	0	0	0	0	83	2223	27	2223	64	2222	286	2223	75
UHN / Mount Sinai Hospital	90935	6903	20990	7	43	347	397	45	20990	297	1977	0	2	19	1	0	1944	6	1977	15	1977	65	1977	79
P.H.O.L. - Toronto	49895	10622	25564	112	2409	148	1127	25	25534	1313	22464	0	0	0	0	864	22468	419	22464	735	22464	2042	22464	1064
Sick Kids Hospital - Toronto	0	0	0	0	0	0	0	0	0	0	0	0	0	0	0	0	0	0	0	0	0	0	0	0
Shared Hospital Laboratory	79428	5684	79429	111	1468	725	2304	221	79430	2198	56679	4	0	16	0	606	56692	556	56952	827	56900	1900	56792	897
P.H.O.L. - Sault Ste. Marie	1700	327	661	1	52	15	58	0	661	25	587	0	0	0	0	51	587	4	587	30	587	43	587	43
P.H.O.L. - Timmins	8795	832	968	0	161	6	156	0	966	98	916	0	0	0	0	52	916	14	916	23	916	82	916	37
St. Joseph's - London	118787	14852	19040	0	0	886	886	54	19040	1011	1971	0	0	0	0	71	2005	71	2005	53	2005	296	1593	89
P.H.O.L. - London	35689	7600	10496	13	585	63	643	15	10495	877	8384	0	0	0	0	399	8385	109	8385	192	8384	801	8385	293
P.H.O.L. - Orillia	547	252	2220	6	261	23	290	6	2220	230	2147	0	0	0	0	123	2147	55	2147	72	2147	308	2147	101
P.H.O.L. - Thunder Bay	8248	1684	1007	0	107	3	110	0	1006	96	885	0	0	0	0	36	885	18	885	23	885	97	886	35
P.H.O.L. - Sudbury	2013	299	747	1	65	14	67	0	747	76	637	0	0	0	0	29	637	7	637	39	637	37	637	25
P.H.O.L. - Hamilton	24938	6713	8706	7	300	92	399	25	8703	550	6295	0	0	0	0	237	6297	117	6295	196	6295	593	6295	258
P.H.O.L. - Peterborough	4967	965	1299	0	67	11	78	2	1299	113	1017	0	0	0	0	36	1017	14	1017	36	1017	148	1017	36
St. Joseph's - Hamilton	92084	13191	43286	0	0	2724	2724	263	43286	2268	43286	0	0	968	0	0	43286	512	43286	771	43286	2897	0	0
Sault Area Hospital	12021	2080	7937	1	262	258	521	3	7937	160	2508	35	5	60	4	0	2508	42	2508	99	2508	235	2508	76
<b>Province of Ontario</b>	<b>669773</b>	<b>92045</b>	<b>245261</b>	<b>278</b>	<b>6008</b>	<b>6818</b>	<b>11505</b>	<b>685</b>	<b>245224</b>	<b>11127</b>	<b>156802</b>	<b>48</b>	<b>10</b>	<b>1115</b>	<b>21</b>	<b>2666</b>	<b>156824</b>	<b>2038</b>	<b>157111</b>	<b>3339</b>	<b>157057</b>	<b>10436</b>	<b>113254</b>	<b>3357</b>
Manitoba	65309	11052	37484	16	202	1781	1999	16	37484	1738	4950	26	17	163	6	0	4940	128	5178	201	4950	703	5178	204
Saskatchewan	158906	12876	38475	2	41	3865	3908	39	30720	2191	12744	76	63	517	22	0	12747	325	12749	636	12747	1290	12742	456
Alberta	219069	32163	118383	975	7292	2807	11074	450	104031	7616	41416	298	92	893	80	0	41401	558	41356	1204	40704	3716	41416	1147
<b>Prairies</b>	<b>443284</b>	<b>56091</b>	<b>194342</b>	<b>993</b>	<b>7535</b>	<b>8453</b>	<b>16981</b>	<b>505</b>	<b>172235</b>	<b>11545</b>	<b>59110</b>	<b>400</b>	<b>172</b>	<b>1573</b>	<b>108</b>	<b>0</b>	<b>59088</b>	<b>1011</b>	<b>59283</b>	<b>2041</b>	<b>58401</b>	<b>5709</b>	<b>59336</b>	<b>1807</b>
<b>British Columbia</b>	<b>219999</b>	<b>22904</b>	<b>121185</b>	<b>389</b>	<b>4352</b>	<b>303</b>	<b>8874</b>	<b>244</b>	<b>113482</b>	<b>8092</b>	<b>25945</b>	<b>205</b>	<b>184</b>	<b>1000</b>	<b>152</b>	<b>6</b>	<b>25933</b>	<b>725</b>	<b>25933</b>	<b>993</b>	<b>25122</b>	<b>3882</b>	<b>25119</b>	<b>996</b>
Yukon	4926	375	807	2	136	0	138	8	805	55	N.C.	N.C.	N.C.	N.C.	N.C.	N.C.	N.C.	N.C.	N.C.	N.C.	N.C.	N.C.	N.C.	N.C.
Northwest Territories	1557	184	1413	2	147	1	150	3	1413	98	N.C.	N.C.	N.C.	N.C.	N.C.	N.C.	N.C.	N.C.	N.C.	N.C.	N.C.	1413	284	N.C.
Nunavut	4261	377	2260	3	230	3	236	73	2260	104	N.C.	N.C.	N.C.	N.C.	N.C.	N.C.	N.C.	N.C.	N.C.	N.C.	N.C.	N.C.	N.C.	N.C.
<b>Territories</b>	<b>10744</b>	<b>936</b>	<b>4480</b>	<b>7</b>	<b>513</b>	<b>4</b>	<b>524</b>	<b>84</b>	<b>4478</b>	<b>257</b>	<b>N.C.</b>	<b>N.C.</b>	<b>N.C.</b>	<b>N.C.</b>	<b>N.C.</b>	<b>N.C.</b>	<b>N.C.</b>	<b>N.C.</b>	<b>N.C.</b>	<b>N.C.</b>	<b>N.C.</b>	<b>1413</b>	<b>284</b>	<b>N.C.</b>
<b>CANADA</b>	<b>2462076</b>	<b>323958</b>	<b>885819</b>	<b>1686</b>	<b>18930</b>	<b>43110</b>	<b>65957</b>	<b>2982</b>	<b>766583</b>	<b>45573</b>	<b>287953</b>	<b>931</b>	<b>494</b>	<b>4943</b>	<b>375</b>	<b>2672</b>	<b>288385</b>	<b>6173</b>	<b>288548</b>	<b>8234</b>	<b>258353</b>	<b>22334</b>	<b>243443</b>	<b>8119</b>

The data in the RVDSS report represent surveillance data available at the time of writing. Data not collected by reporting lab denoted by N.C.

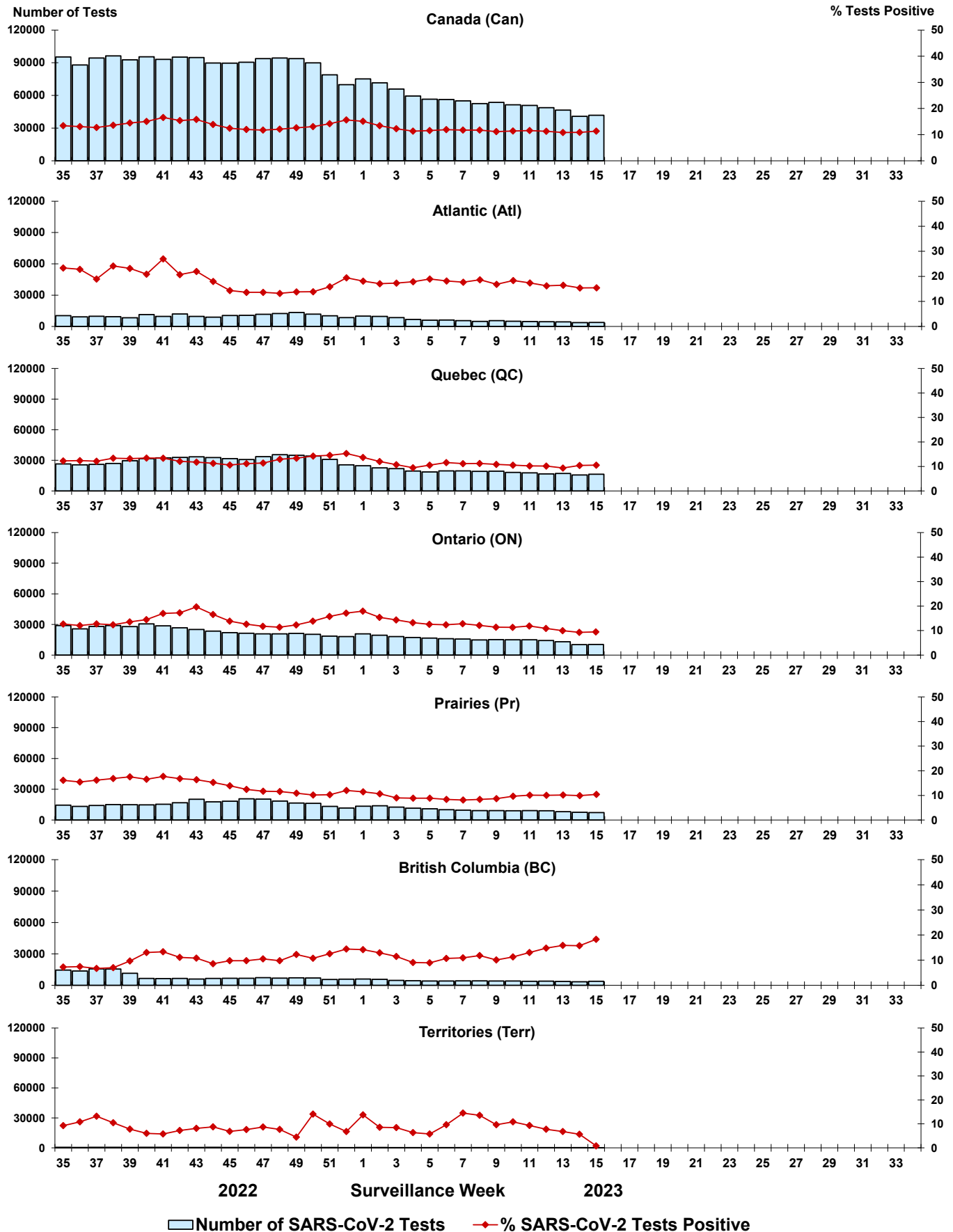
Some specimens from Yukon (YT) are sent to reference laboratories in British Columbia and reported results reflect specimens identified as originating from YT.

Results from British Columbia comprise of specimens from the following sites: Children's and Women's Hospital Laboratory, Fraser Health Medical Microbiology Laboratory, Island Health, Providence Health Care, Vancouver Coastal Health sites, Victoria General Hospital, BCCDC Public Health Laboratory, Interior Health Authority sites and Northern Health Authority sites.

Due to different testing protocols of laboratories across Canada, influenza A subtype detection counts may not be included in total influenza A detection counts. Total influenza A and B positive counts are used to calculate percentage of tests

Delays in the reporting of data may cause data to change retrospectively. Due to these delays, the sum of weekly report totals do not add up to cumulative totals.

**Figure 3: Positive severe acute respiratory syndrome coronavirus 2 (SARS-CoV-2) tests (%) in Canada by region by surveillance week**



Note: Differences in positivity between jurisdictions can reflect differences in testing practices. Please interpret with caution.

Figure 4: Positive Influenza (Flu) tests (%) in Canada by region by surveillance week

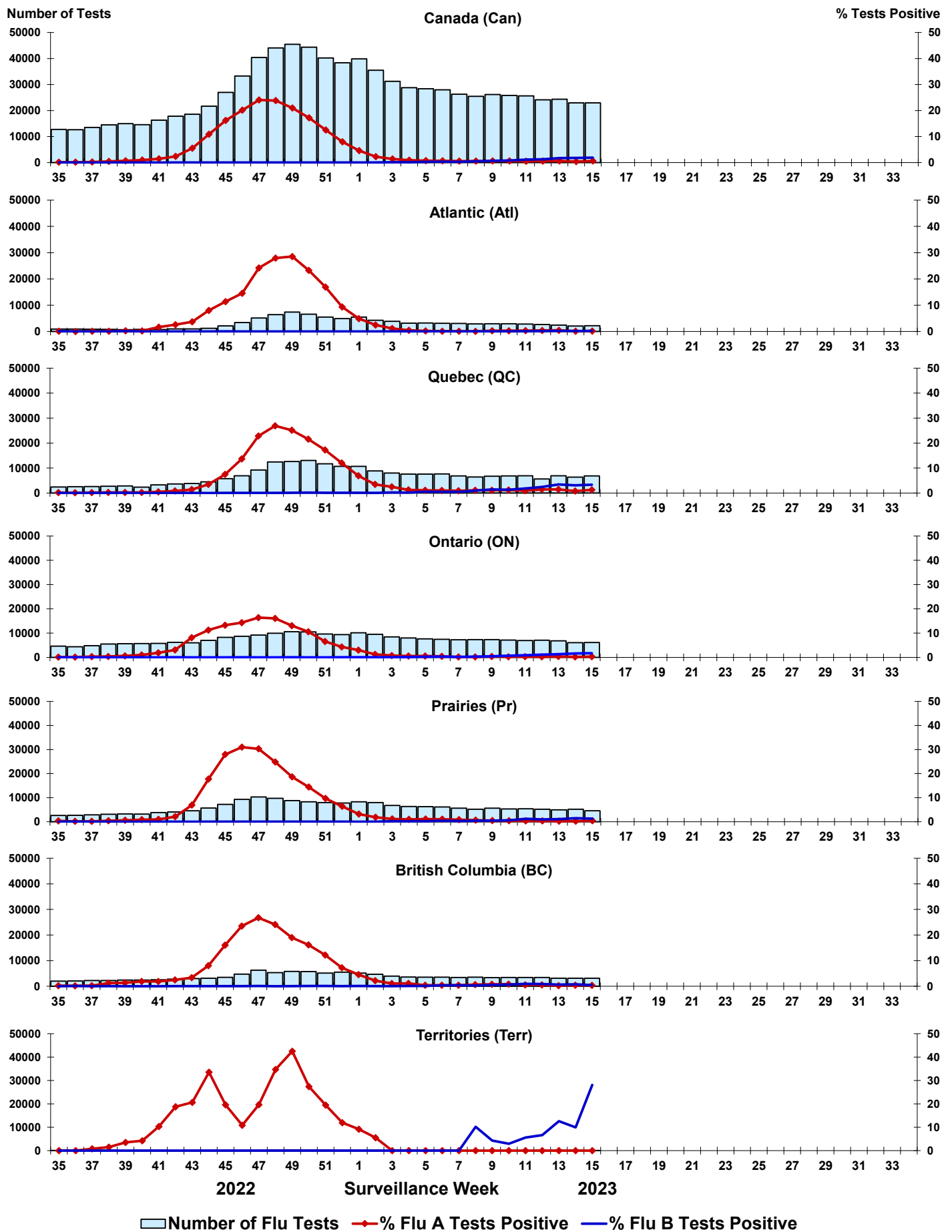


Figure 5: Positive Respiratory syncytial virus (RSV) tests (%) in Canada by region by surveillance week

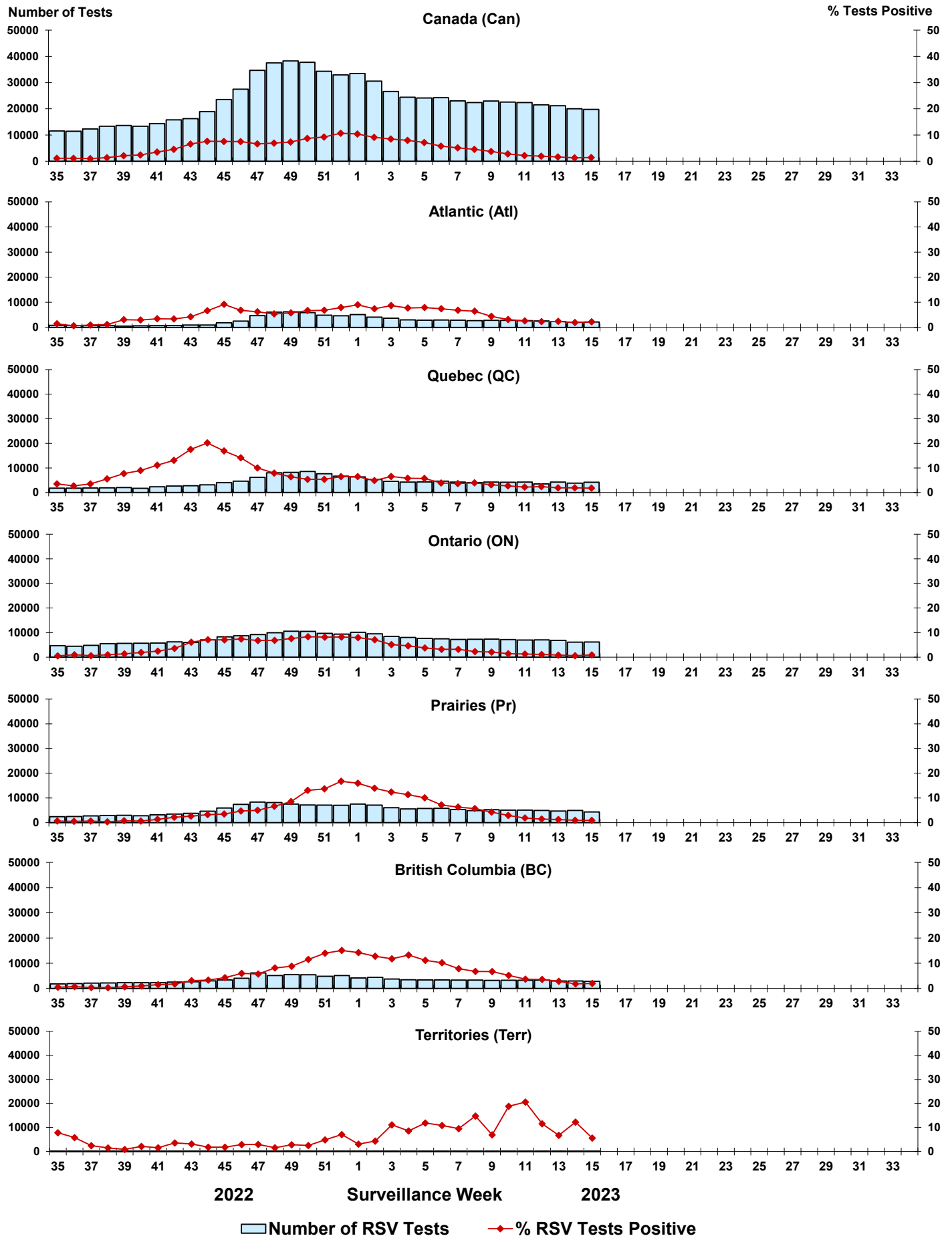




Figure 6: Positive Human parainfluenza virus (HPIV) tests (%) in Canada by region by surveillance week

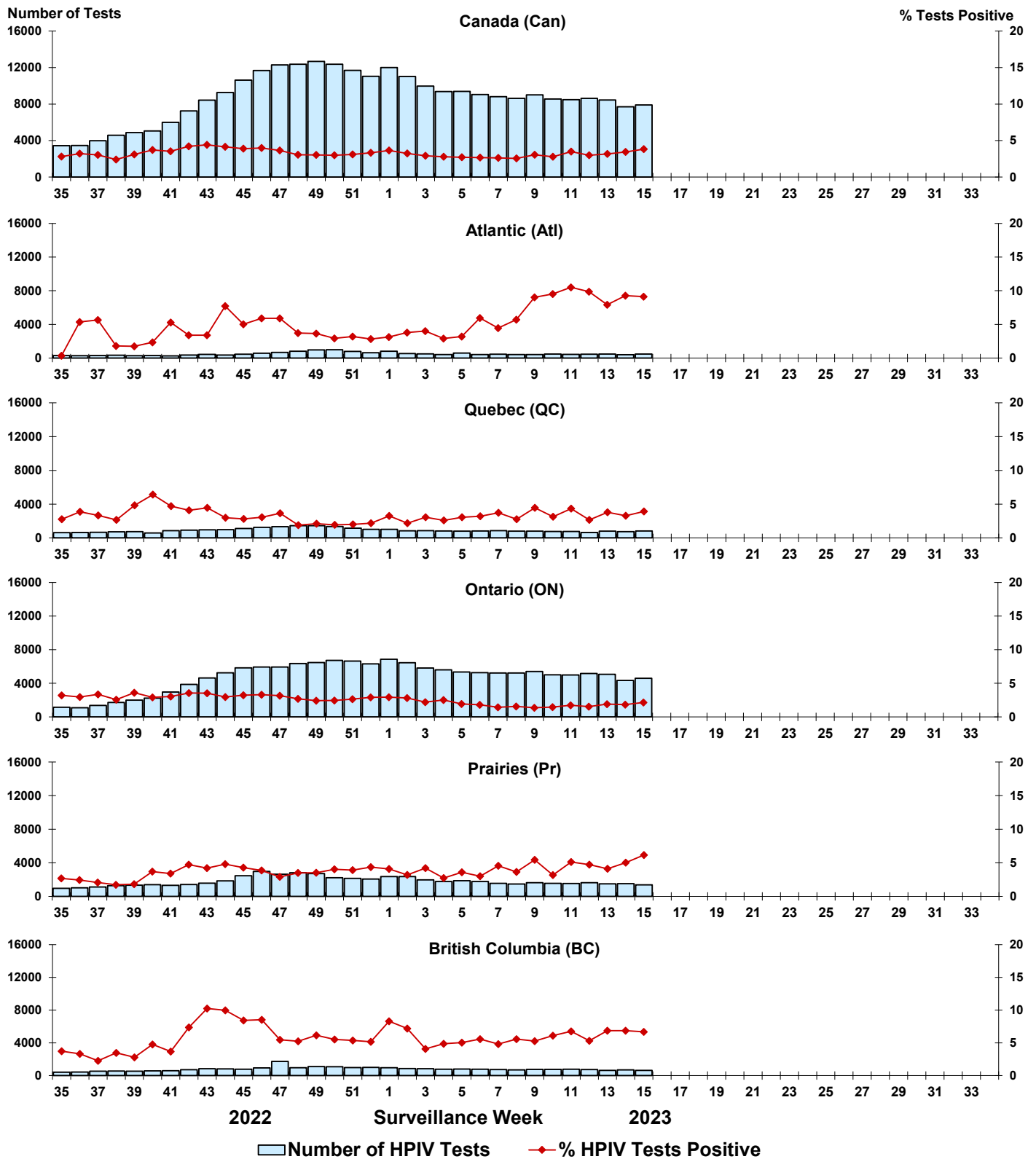


Figure 7: Positive Adenovirus (ADV) tests (%) in Canada by region by surveillance week

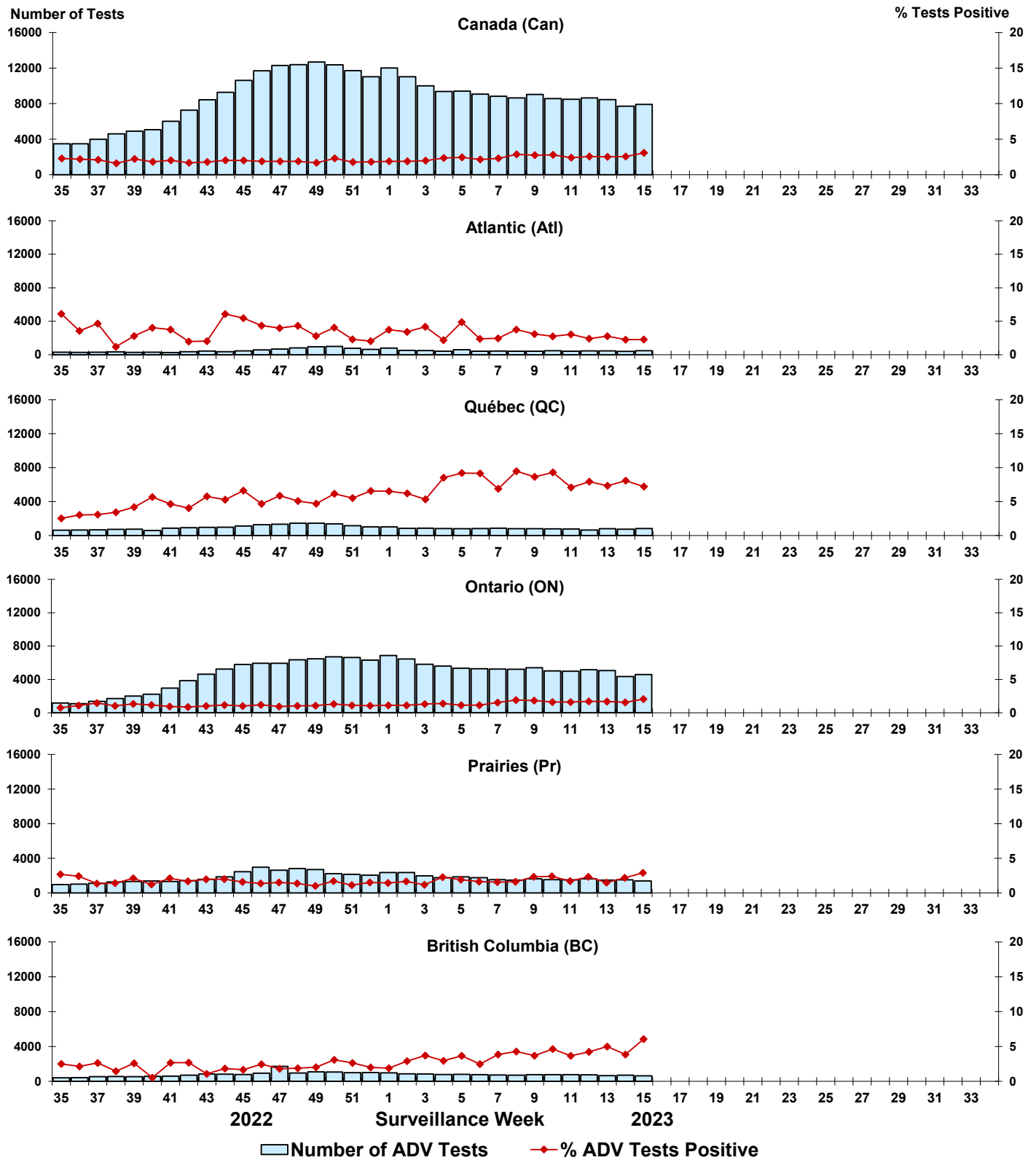


Figure 8: Positive Human metapneumovirus (HMPV) tests (%) in Canada by region by surveillance week

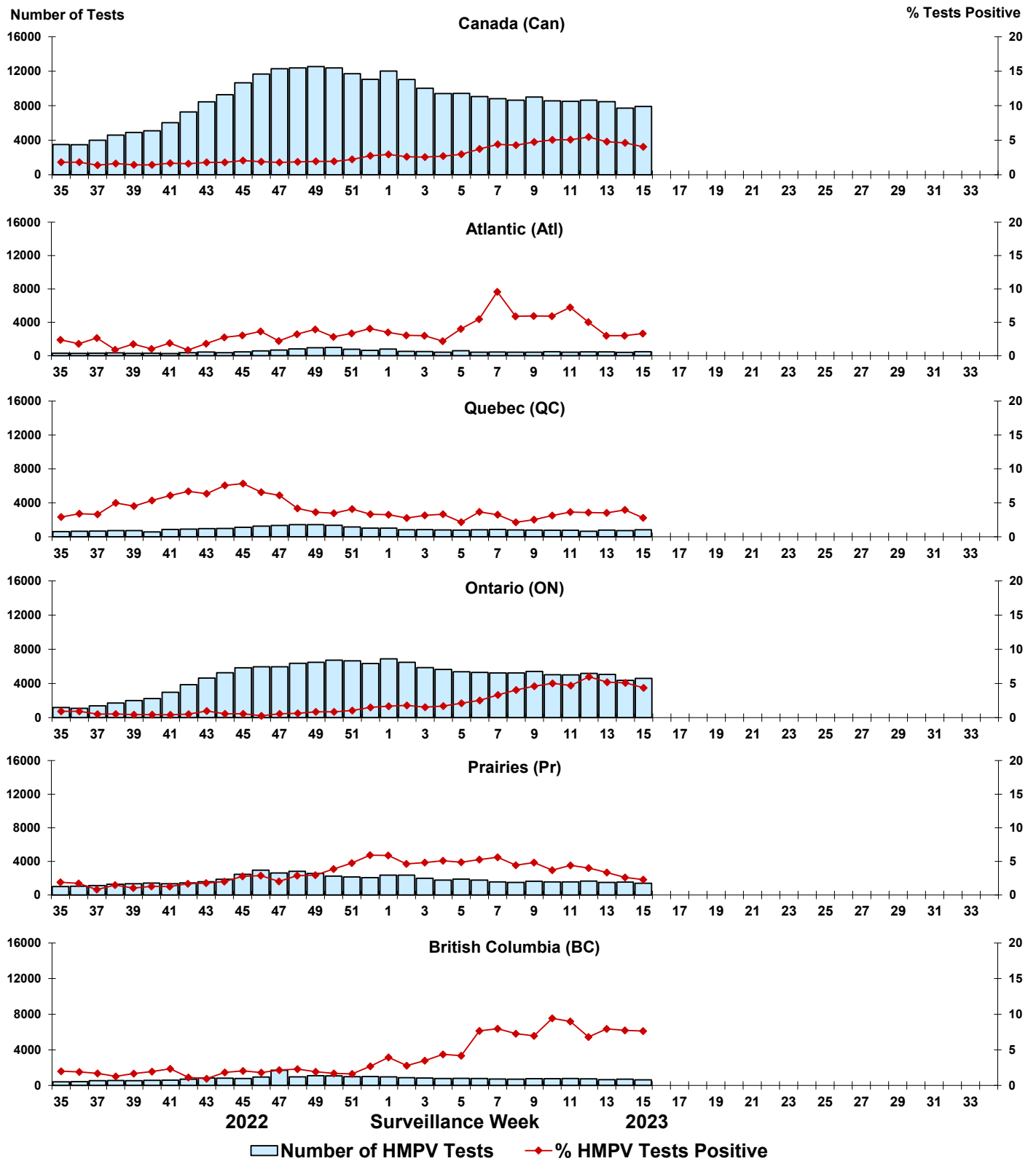


Figure 9: Positive Enterovirus/Rhinovirus (EV/RV) tests (%) in Canada by region by surveillance week

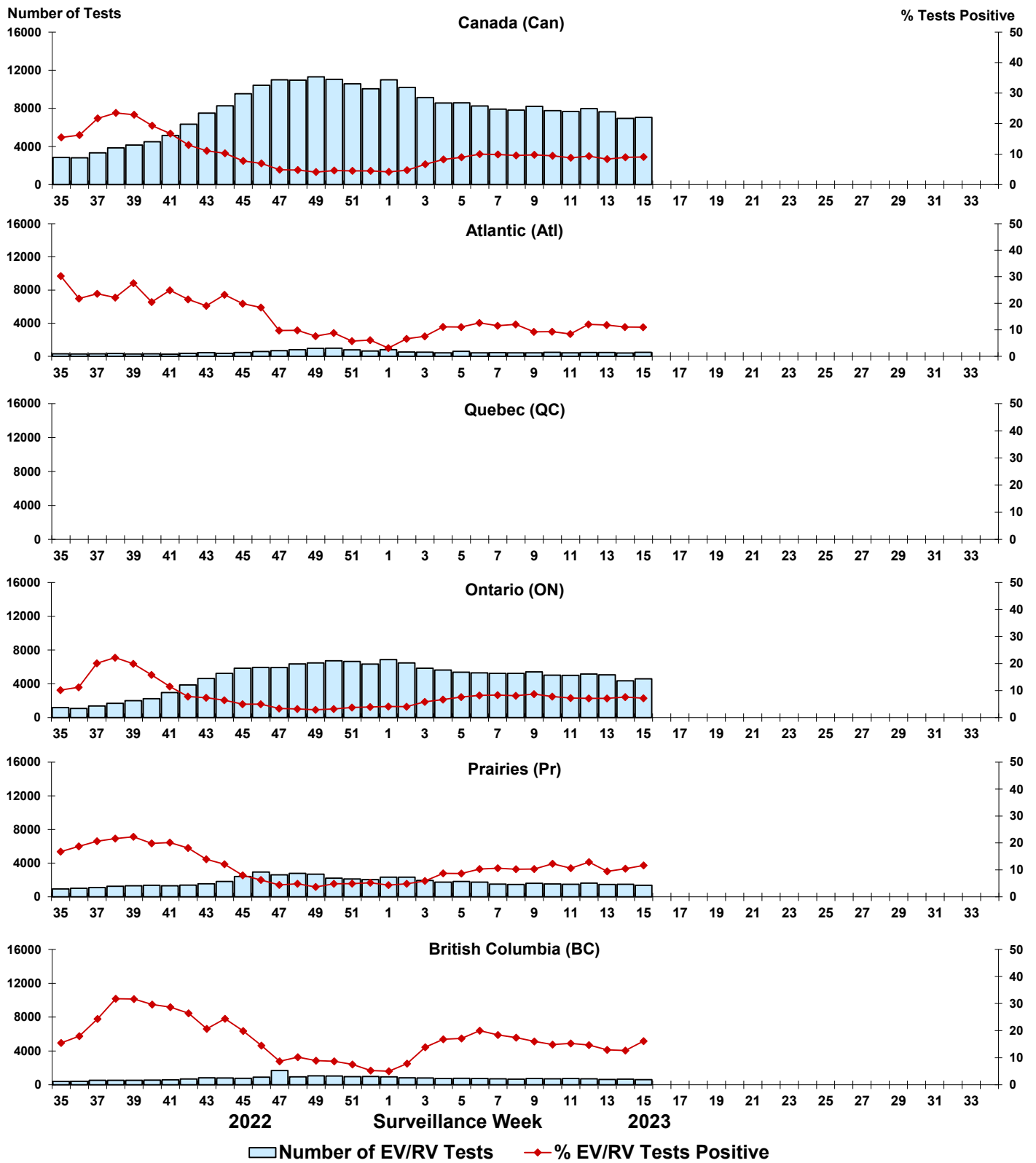


Figure 10: Positive Human coronavirus (HCoV) tests (%) in Canada by region by surveillance week

