

# RESPIRATORY VIRUS DETECTION REPORT

July 2 to July 8, 2023  
(Surveillance Week 2023-27)



Please note that the Respiratory Virus Detection Surveillance System (RVDSS) is a sentinel laboratory surveillance system that does not capture all respiratory virus testing performed in Canada; differences may exist between the data presented in this report and provincial/territorial epidemiological reports. SARS-CoV-2 laboratory data is included in this report to facilitate the comparison of positivity with other respiratory viruses. Interpretation should be made with caution as testing practices differ among viruses.

For additional SARS-CoV-2 surveillance information, please refer to the [COVID-19 epidemiology update](#).

## Overall Summary

In week 27 (week ending July 8, 2023) in Canada, participating RVDSS laboratories reported 1,100 detections of SARS-CoV-2 from 19,084 tests (5.8% positive). Among non-SARS-CoV-2 respiratory viruses, where test volumes are lower (range of 3,858 to 12,126 tests), activity of enterovirus/rhinovirus is highest.

- While activity of enterovirus/rhinovirus is highest, it remains below expected levels typical of this time of year (542 detections; 13.8% positive).
- Activity of all other non-SARS-CoV-2 respiratory viruses is near or below expected levels typical of this time of year.
- 34/35 sentinel laboratories reported surveillance data

## Abbreviations

ADV: Adenovirus

Atl: Atlantic Canada

BC: British Columbia

Can: Canada

EORLA: Eastern Ontario Regional Laboratory Association

EV/RV: Enterovirus/Rhinovirus

Flu: Influenza

Flu A(H1N1)pdm09: Influenza A(H1N1)pdm09

Flu A(H3): Influenza A(H3N2)

Flu A (UnS): Influenza A(Unsubtyped)

HCoV: Human coronavirus 229E/OC43/NL63/HKU1

HMPV: Human metapneumovirus

HPIV: Human parainfluenza virus

HSC: Health Sciences Centre

N.C.: Data not collected

N.R.: Data not reported for current week

ON: Ontario

PR: Prairies

P.H.O.L.: Public Health Ontario Laboratory

QC: Quebec

RSV: Respiratory syncytial virus

RVDSS: Respiratory Virus Detection Surveillance System

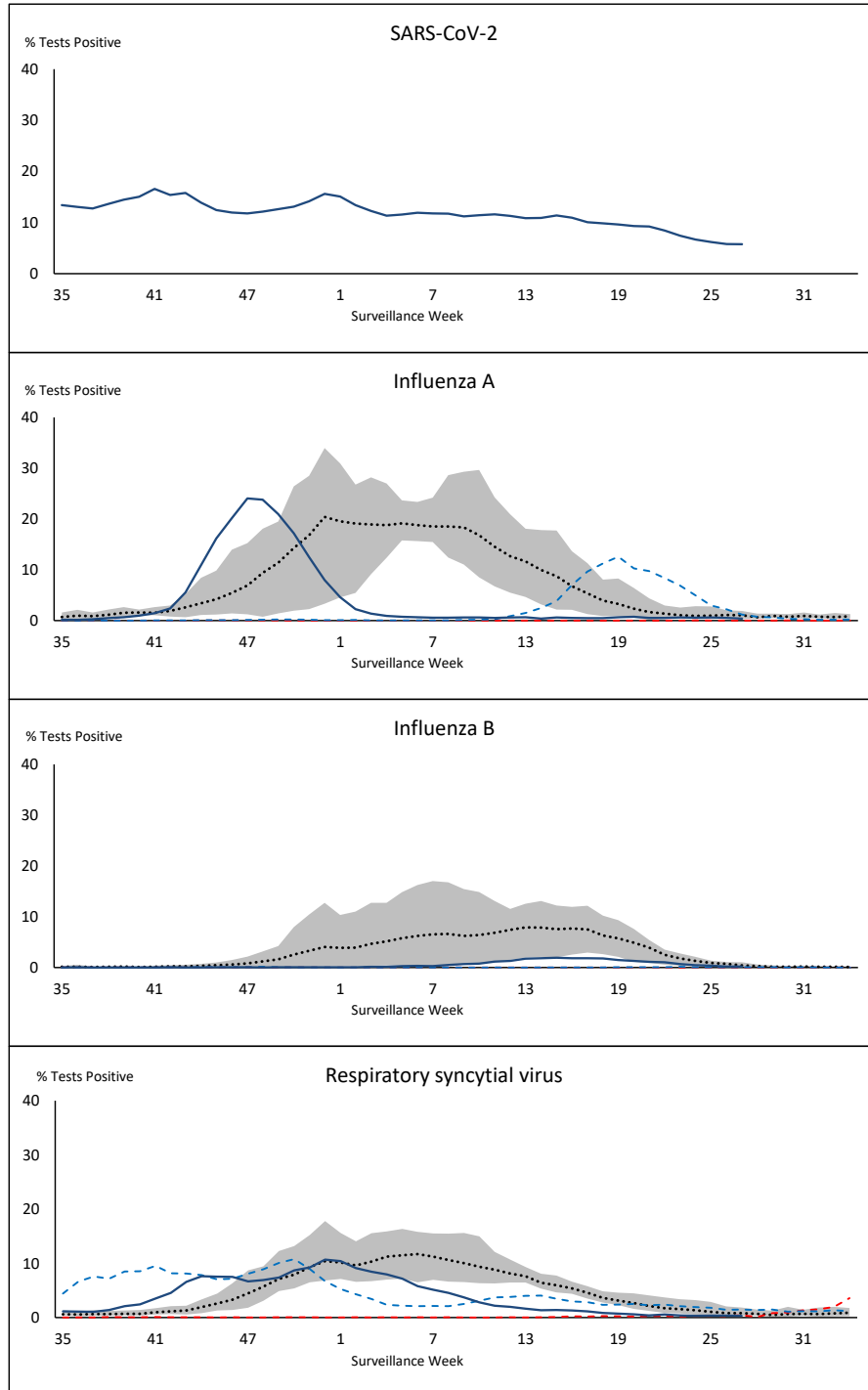
SARS-CoV-2: Severe acute respiratory syndrome coronavirus 2

Terr: Territories of Canada

UHN: University Health Network



**Figure 1: Positive severe acute respiratory syndrome coronavirus 2 (SARS-CoV-2), influenza, and respiratory syncytial virus tests (%) reported by participating laboratories in Canada by surveillance week compared to average and range from 2014-2015 to 2019-2020 season**



— % Tests Positive, 2022-2023      - - - % Tests Positive, 2021-2022  
- - - % Tests Positive, 2020-2021      ⋯ % Tests Positive, six-year average (2014-2015 to 2019-2020)

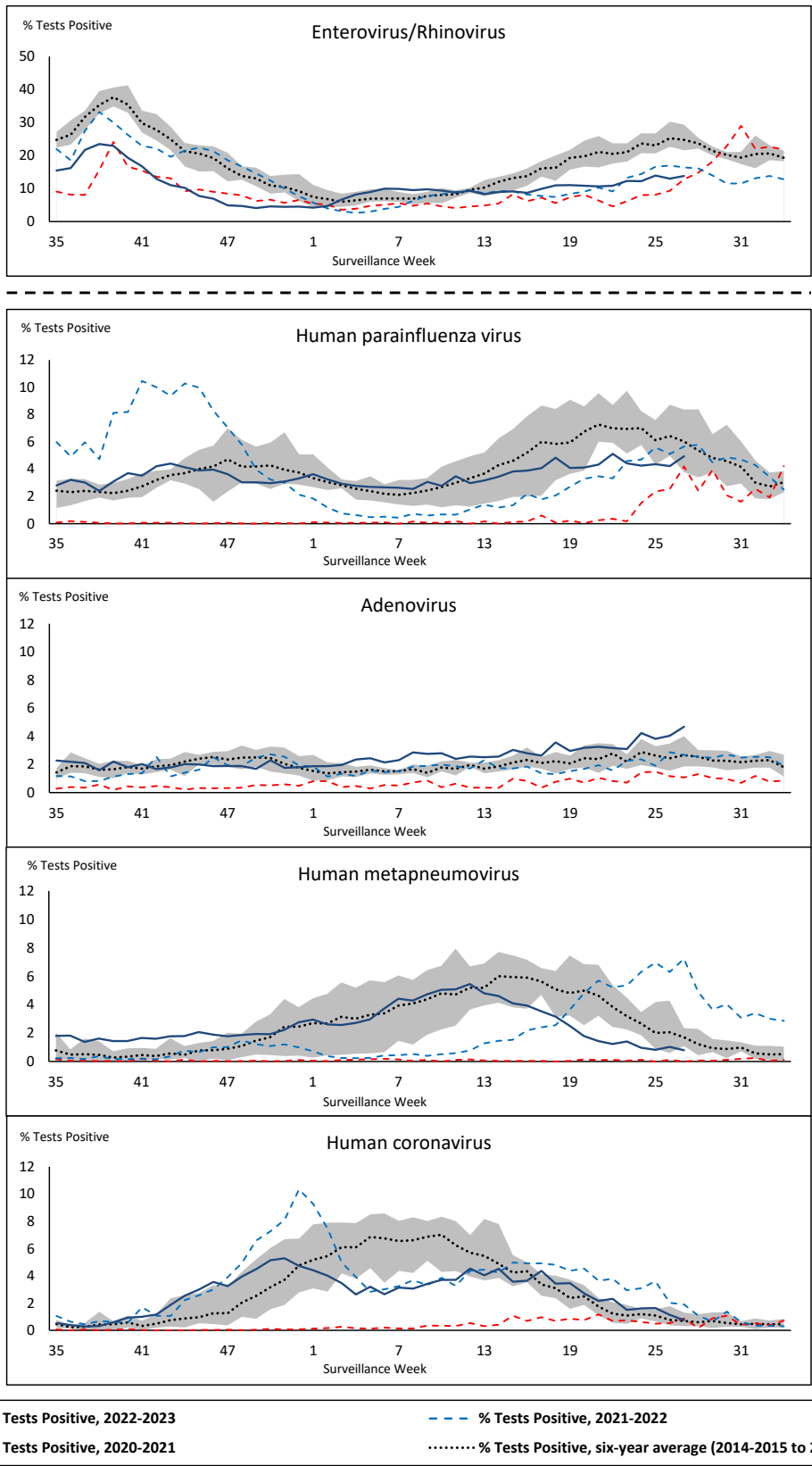
Shaded area represents the maximum and minimum % of respiratory virus tests positive reported by week from seasons 2014-2015 to 2019-2020

Note: Changes to testing practices during the COVID-19 pandemic may cause substantial changes to indicator estimates from previous years. Collection of laboratory testing practice meta-data to understand these changes is ongoing. Interpret trends with caution.

Note: SARS-CoV-2 surveillance was integrated into RVDSS at the beginning of the 2022-2023 season; no appropriate data is available for historical comparison.

Note: Data from week 11 of the 2019-2020 season onwards are excluded from the historical comparison due to the COVID-19 pandemic.

**Figure 2: Positive tests (%) of other respiratory viruses reported by participating laboratories in Canada by surveillance week compared to average and range from 2014-2015 to 2019-2020 season**



Shaded area represents the maximum and minimum % of respiratory virus tests positive reported by week from seasons 2014-2015 to 2019-2020

Note: Changes to testing practices during the COVID-19 pandemic may cause substantial changes to indicator estimates from previous years. Collection of laboratory testing practice meta-data to understand these changes is ongoing. Interpret trends with caution.

Note: Data from week 11 of the 2019-2020 season onwards are excluded from the historical comparison due to the COVID-19 pandemic.

Note: % Tests Positive scale changes across the dashed line

**Table 1: Respiratory virus detections for the week ending July 8, 2023 (surveillance week 2023-27)**

Reporting Laboratory	SARS-CoV-2 Tested	SARS-CoV-2 Positive	Flu Tested	A(H1)pdm09 Positive	A(H3) Positive	A(UnS) Positive	Total Flu A Positive	Total Flu B Positive	RSV Tested	RSV Positive	HPIV Tested	HPIV 1 Positive	HPIV 2 Positive	HPIV 3 Positive	HPIV 4 Positive	Other HPIV Positive	ADV Tested	ADV Positive	HMPV Tested	HMPV Positive	EV/RV Tested	EV/RV Positive	HCoV Tested	HCoV Positive	
Newfoundland	311	39	190	0	0	1	1	0	190	3	190	2	0	1	5	0	190	9	190	0	190	18	190	4	
Prince Edward Island	84	8	6	0	0	0	0	0	6	0	5	0	0	0	1	0	5	1	5	0	5	1	5	0	
Nova Scotia	778	83	473	0	0	0	0	0	473	1	24	0	0	1	1	0	24	1	24	0	24	9	24	0	
New Brunswick	512	24	390	0	0	1	1	1	386	6	59	2	0	0	0	0	59	3	59	0	59	19	59	1	
<b>Atlantic</b>	<b>1685</b>	<b>154</b>	<b>1059</b>	<b>0</b>	<b>0</b>	<b>2</b>	<b>2</b>	<b>1</b>	<b>1055</b>	<b>10</b>	<b>278</b>	<b>4</b>	<b>0</b>	<b>2</b>	<b>7</b>	<b>0</b>	<b>278</b>	<b>14</b>	<b>278</b>	<b>0</b>	<b>278</b>	<b>47</b>	<b>278</b>	<b>5</b>	
Région Nord-Est	1038	62	842	0	0	0	0	1	185	1	46	0	1	0	2	0	46	8	45	1	N.C.	N.C.	46	1	
Québec-Chaudière-Appalaches	1470	63	290	0	0	0	0	1	290	0	128	0	0	0	3	0	155	14	128	1	N.C.	N.C.	128	1	
Centre-du-Québec	940	45	134	0	0	3	3	2	134	1	21	0	1	0	2	0	21	0	21	0	N.C.	N.C.	21	0	
Montréal-Laval	1787	103	947	0	0	3	3	1	932	5	494	0	3	8	8	0	494	8	494	6	N.C.	N.C.	494	3	
Ouest du Québec	817	62	277	0	0	0	0	0	277	1	22	0	0	0	3	0	22	2	22	0	N.C.	N.C.	22	0	
Montérégie	748	46	728	0	0	0	0	2	715	5	6	0	0	0	0	0	6	0	6	0	N.C.	N.C.	6	0	
<b>Province of Québec</b>	<b>6800</b>	<b>381</b>	<b>3218</b>	<b>0</b>	<b>0</b>	<b>6</b>	<b>6</b>	<b>7</b>	<b>2533</b>	<b>13</b>	<b>717</b>	<b>0</b>	<b>5</b>	<b>8</b>	<b>18</b>	<b>0</b>	<b>744</b>	<b>32</b>	<b>716</b>	<b>8</b>	<b>N.C.</b>	<b>N.C.</b>	<b>717</b>	<b>5</b>	
P.H.O.L. - Ottawa	94	13	45	0	0	0	0	0	45	0	26	0	0	0	0	1	26	0	26	0	26	5	26	0	
EORLA	723	32	244	0	0	0	0	2	244	2	20	0	0	1	0	0	20	1	20	0	20	2	20	0	
P.H.O.L. - Kingston	83	4	37	0	0	0	0	0	37	0	30	0	0	0	0	8	30	0	30	0	30	4	30	0	
UHN / Mount Sinai Hospital	808	17	461	0	0	0	0	0	461	1	32	0	0	2	0	0	32	0	32	0	32	2	32	0	
P.H.O.L. - Toronto	192	49	431	2	0	1	2	1	431	1	409	0	0	0	0	42	409	22	409	9	409	67	409	1	
Sick Kids Hospital - Toronto	N.R.	N.R.	N.R.	N.R.	N.R.	N.R.	N.R.	N.R.	N.R.	N.R.	N.R.	N.R.	N.R.	N.R.	N.R.	N.R.	N.R.	N.R.	N.R.	N.R.	N.R.	N.R.	N.R.	N.R.	N.R.
Shared Hospital Laboratory	761	26	761	5	0	1	6	1	761	3	761	0	0	0	0	21	761	17	761	2	761	43	761	2	
P.H.O.L. - Sault Ste. Marie	4	0	5	0	0	0	0	0	5	0	5	0	0	0	0	0	5	0	5	0	5	1	5	0	
P.H.O.L. - Timmins	5	0	2	0	0	0	0	0	2	0	2	0	0	0	0	0	2	0	2	0	2	1	2	0	
St. Joseph's - London	526	33	56	0	0	0	0	0	56	0	56	0	0	0	0	3	56	2	56	0	56	9	56	0	
P.H.O.L. - London	132	7	91	0	0	0	0	0	91	0	86	0	0	0	0	6	86	3	86	2	86	12	86	0	
P.H.O.L. - Orillia	10	7	20	0	0	0	0	0	20	0	20	0	0	0	0	1	20	1	20	0	20	2	20	0	
P.H.O.L. - Thunder Bay	18	2	11	0	0	0	0	0	11	0	10	0	0	0	0	0	10	0	10	0	10	2	10	0	
P.H.O.L. - Sudbury	5	0	6	0	0	0	0	0	6	0	6	0	0	0	0	0	6	0	6	0	6	3	6	0	
P.H.O.L. - Hamilton	110	16	92	1	0	0	1	0	92	0	92	0	0	0	0	5	92	7	92	4	92	20	92	2	
P.H.O.L. - Peterborough	19	0	46	0	0	0	0	0	46	0	46	0	0	0	0	2	46	5	46	0	46	13	46	0	
St. Joseph's - Hamilton	919	34	807	0	0	3	3	2	807	2	807	0	0	11	0	0	807	34	807	6	807	26	0	0	
Sault Area Hospital	49	4	49	0	0	0	0	0	49	0	27	1	0	0	0	0	27	1	27	0	27	5	27	1	
<b>Province of Ontario</b>	<b>4458</b>	<b>244</b>	<b>3164</b>	<b>8</b>	<b>0</b>	<b>5</b>	<b>12</b>	<b>6</b>	<b>3164</b>	<b>9</b>	<b>2435</b>	<b>1</b>	<b>0</b>	<b>14</b>	<b>0</b>	<b>89</b>	<b>2435</b>	<b>93</b>	<b>2435</b>	<b>23</b>	<b>2435</b>	<b>217</b>	<b>1628</b>	<b>6</b>	
Manitoba	855	35	739	0	0	2	2	3	739	1	52	1	4	1	0	0	52	11	82	0	52	40	82	0	
Saskatchewan	1072	23	453	0	0	1	1	0	446	0	191	0	2	0	8	0	191	12	191	0	191	45	191	2	
Alberta	2193	68	1712	7	1	1	9	5	1642	0	524	5	8	0	0	0	522	13	523	1	519	87	524	4	
<b>Prairies</b>	<b>4120</b>	<b>126</b>	<b>2904</b>	<b>7</b>	<b>1</b>	<b>4</b>	<b>12</b>	<b>8</b>	<b>2827</b>	<b>1</b>	<b>767</b>	<b>6</b>	<b>14</b>	<b>1</b>	<b>8</b>	<b>0</b>	<b>765</b>	<b>36</b>	<b>796</b>	<b>1</b>	<b>762</b>	<b>172</b>	<b>797</b>	<b>6</b>	
British Columbia	1939	193	1718	11	0	1	17	0	1718	3	459	14	9	3	27	0	459	44	459	5	438	102	438	7	
Yukon	21	2	11	0	0	0	0	0	11	0	N.C.	N.C.	N.C.	N.C.	N.C.	N.C.	N.C.	N.C.	N.C.	N.C.	N.C.	N.C.	N.C.	N.C.	
Northwest Territories	9	0	8	0	0	0	0	0	8	0	N.C.	N.C.	N.C.	N.C.	N.C.	N.C.	N.C.	N.C.	N.C.	N.C.	N.C.	8	4	N.C.	N.C.
Nunavut	52	0	44	0	0	0	0	1	44	1	N.C.	N.C.	N.C.	N.C.	N.C.	N.C.	N.C.	N.C.	N.C.	N.C.	N.C.	N.C.	N.C.	N.C.	
<b>Territories</b>	<b>82</b>	<b>2</b>	<b>63</b>	<b>0</b>	<b>0</b>	<b>0</b>	<b>0</b>	<b>1</b>	<b>63</b>	<b>1</b>	<b>N.C.</b>	<b>N.C.</b>	<b>N.C.</b>	<b>N.C.</b>	<b>N.C.</b>	<b>N.C.</b>	<b>N.C.</b>	<b>N.C.</b>	<b>N.C.</b>	<b>N.C.</b>	<b>N.C.</b>	<b>8</b>	<b>4</b>	<b>N.C.</b>	<b>N.C.</b>
<b>CANADA</b>	<b>19084</b>	<b>1100</b>	<b>12126</b>	<b>26</b>	<b>1</b>	<b>18</b>	<b>49</b>	<b>23</b>	<b>11360</b>	<b>37</b>	<b>4656</b>	<b>25</b>	<b>28</b>	<b>28</b>	<b>60</b>	<b>89</b>	<b>4681</b>	<b>219</b>	<b>4684</b>	<b>37</b>	<b>3921</b>	<b>542</b>	<b>3858</b>	<b>29</b>	

The data in the RVDSS report represent surveillance data available at the time of writing. Data missing from the current week are denoted by N.R. Data not collected by reporting lab denoted by N.C.

Some specimens from Yukon (YT) are sent to reference laboratories in British Columbia and reported results reflect specimens identified as originating from YT.

Results from British Columbia comprise of specimens from the following sites: Children's and Women's Hospital Laboratory, Fraser Health Medical Microbiology Laboratory, Island Health, Providence Health Care, Vancouver Coastal Health sites, Victoria General Hospital, BCCDC Public Health Laboratory, Interior Health Authority sites and Northern Health Authority sites.

Due to different testing protocols of laboratories across Canada, influenza A subtype detection counts may not be included in total influenza A detection counts. Total influenza A and B positive counts are used to calculate percentage of tests positive.

Delays in the reporting of data may cause data to change retrospectively.

**Table 2: Cumulative respiratory virus detections from August 28, 2022 to July 8, 2023 (surveillance weeks 2022-35 to 2023-27)**

Reporting Laboratory	SARS-CoV-2 Tested	SARS-CoV-2 Positive	Flu Tested	A(H1)pdm09 Positive	A(H3) Positive	A(UnS) Positive	Total Flu A Positive	Total Flu B Positive	RSV Tested	RSV Positive	HPIV Tested	HPIV 1 Positive	HPIV 2 Positive	HPIV 3 Positive	HPIV 4 Positive	Other HPIV Positive	ADV Tested	ADV Positive	HMPV Tested	HMPV Positive	EV/RV Tested	EV/RV Positive	HCoV Tested	HCoV Positive
Newfoundland	23780	4114	13850	8	246	678	932	10	13850	628	13850	70	33	385	146	0	13850	285	13850	386	13850	1196	13850	564
Prince Edward Island	33501	7322	4087	1	119	248	368	4	4087	384	1178	20	27	81	8	0	1178	80	1178	39	1178	344	1178	35
Nova Scotia	136796	26405	46268	0	4	3650	3654	15	46259	2426	1466	10	16	35	6	0	1473	58	1463	45	1473	281	1473	61
New Brunswick	110453	16023	52108	24	133	4436	4593	31	44053	2064	4078	37	32	166	8	0	4078	279	4078	186	4078	771	4023	236
<b>Atlantic</b>	<b>304530</b>	<b>53864</b>	<b>116313</b>	<b>33</b>	<b>502</b>	<b>9012</b>	<b>9547</b>	<b>60</b>	<b>108249</b>	<b>5502</b>	<b>20572</b>	<b>137</b>	<b>108</b>	<b>667</b>	<b>168</b>	<b>0</b>	<b>20579</b>	<b>702</b>	<b>20569</b>	<b>656</b>	<b>20579</b>	<b>2592</b>	<b>20524</b>	<b>896</b>
Région Nord-Est	100204	11828	60690	0	4	3887	3891	94	17641	1389	1928	31	9	94	5	0	1929	160	1912	99	N.C.	N.C.	1929	113
Québec-Chaudière-Appalaches	201058	18659	28358	0	0	2908	2908	182	27668	1947	8451	25	6	97	19	0	9175	755	8451	364	N.C.	N.C.	8451	344
Centre-du-Québec	164511	21864	16939	0	0	1786	1786	121	15177	994	1215	15	2	53	16	0	1215	133	1215	74	N.C.	N.C.	1215	72
Montréal-Laval	227881	27183	111927	0	9	6309	6318	1584	62623	2792	25795	144	29	593	90	0	25804	1105	25957	837	N.C.	N.C.	25480	809
Ouest du Québec	123085	15438	25779	0	7	2201	2208	192	23479	1329	1168	22	0	68	11	0	1167	204	1168	63	N.C.	N.C.	1169	63
Montérégie	154990	17262	35703	0	0	1813	1813	266	32431	1229	186	0	0	2	0	0	186	4	186	6	N.C.	N.C.	186	5
<b>Province of Québec</b>	<b>971729</b>	<b>112234</b>	<b>279396</b>	<b>0</b>	<b>20</b>	<b>18904</b>	<b>18924</b>	<b>2439</b>	<b>179019</b>	<b>9680</b>	<b>38743</b>	<b>237</b>	<b>46</b>	<b>907</b>	<b>141</b>	<b>0</b>	<b>39476</b>	<b>2361</b>	<b>38889</b>	<b>1443</b>	<b>N.C.</b>	<b>N.C.</b>	<b>38430</b>	<b>1406</b>
P.H.O.L. - Ottawa	29888	7500	6106	24	136	66	220	3	6106	355	4283	0	0	0	0	132	4283	20	4283	115	4283	414	4283	210
EORLA	94629	8943	18220	0	0	1417	1417	58	18220	1306	1521	11	5	60	20	0	1521	55	1521	63	1521	332	1521	102
P.H.O.L. - Kingston	31814	4998	3406	6	92	38	135	3	3405	180	2730	0	0	0	0	132	2731	30	2731	81	2730	351	2731	104
UHN / Mount Sinai Hospital	103380	7697	27072	7	44	358	409	58	27072	320	2323	2	2	45	4	0	2290	7	2323	15	2323	86	2323	91
P.H.O.L. - Toronto	54184	11456	32589	163	2415	156	1163	76	32557	1357	28987	0	0	0	0	1319	28991	637	28984	1090	28987	2921	28984	1366
Sick Kids Hospital - Toronto	0	0	0	0	0	0	0	0	0	0	0	0	0	0	0	0	0	0	0	0	0	0	0	0
Shared Hospital Laboratory	92187	6326	92187	139	1473	729	2341	386	92188	2224	69474	4	0	16	0	882	69487	751	69773	963	69721	2523	69613	1068
P.H.O.L. - Sault Ste. Marie	1883	346	743	1	52	15	58	0	743	25	653	0	0	0	0	54	653	4	653	31	653	53	653	44
P.H.O.L. - Timmins	9475	907	1138	0	161	6	156	0	1136	98	1047	0	0	0	0	56	1047	14	1047	29	1047	90	1047	49
St. Joseph's - London	128483	15413	21382	0	0	886	886	70	21382	1016	2546	0	0	0	0	95	2580	87	2580	72	2580	363	2169	108
P.H.O.L. - London	39175	8126	12335	16	586	63	647	27	12334	888	10011	0	0	0	0	522	10012	146	10012	260	10011	1001	10012	330
P.H.O.L. - Orillia	654	280	2554	6	261	23	290	15	2554	237	2476	0	0	0	0	144	2477	82	2476	83	2476	375	2476	108
P.H.O.L. - Thunder Bay	8731	1728	1135	0	107	3	110	0	1134	96	1005	0	0	0	0	38	1005	19	1005	29	1005	122	1006	38
P.H.O.L. - Sudbury	2184	322	855	1	65	14	67	0	855	79	734	0	0	0	0	30	734	9	734	46	734	50	734	25
P.H.O.L. - Hamilton	27179	7122	10246	35	302	92	413	40	10243	557	7733	0	0	0	0	326	7735	201	7733	265	7733	806	7733	298
P.H.O.L. - Peterborough	5568	1031	1909	1	67	11	79	19	1909	116	1574	0	0	0	0	68	1574	44	1574	50	1574	306	1574	50
St. Joseph's - Hamilton	107338	13986	56200	0	0	2768	2768	519	56200	2293	56200	0	0	1136	0	0	56200	933	56200	948	56200	3649	0	0
Sault Area Hospital	12935	2152	8851	1	262	258	521	8	8851	173	3076	37	9	74	4	0	3076	54	3076	101	3076	346	3076	85
<b>Province of Ontario</b>	<b>749687</b>	<b>98333</b>	<b>296928</b>	<b>400</b>	<b>6023</b>	<b>6903</b>	<b>11680</b>	<b>1282</b>	<b>296889</b>	<b>11320</b>	<b>196373</b>	<b>54</b>	<b>16</b>	<b>1331</b>	<b>28</b>	<b>3798</b>	<b>196396</b>	<b>3093</b>	<b>196705</b>	<b>4241</b>	<b>196654</b>	<b>13788</b>	<b>139935</b>	<b>4076</b>
Manitoba	78175	12203	48292	18	202	1811	2031	83	48292	1795	5907	48	52	176	9	0	5897	167	6371	226	5907	995	6371	224
Saskatchewan	175691	13864	45808	2	41	3992	4035	80	37543	2217	15458	162	119	532	102	0	15460	434	15460	684	15461	1828	15456	531
Alberta	255347	34886	146421	1081	7308	2848	11237	788	130827	7673	50648	387	170	979	148	0	50630	744	49846	1266	49817	4912	50647	1342
<b>Prairies</b>	<b>509213</b>	<b>60953</b>	<b>240521</b>	<b>1101</b>	<b>7551</b>	<b>8651</b>	<b>17303</b>	<b>951</b>	<b>216662</b>	<b>11685</b>	<b>72013</b>	<b>597</b>	<b>341</b>	<b>1687</b>	<b>259</b>	<b>0</b>	<b>71987</b>	<b>1345</b>	<b>71677</b>	<b>2176</b>	<b>71185</b>	<b>7735</b>	<b>72474</b>	<b>2097</b>
<b>British Columbia</b>	<b>250874</b>	<b>26902</b>	<b>147718</b>	<b>526</b>	<b>4356</b>	<b>311</b>	<b>9083</b>	<b>324</b>	<b>139632</b>	<b>8264</b>	<b>33030</b>	<b>409</b>	<b>226</b>	<b>1166</b>	<b>265</b>	<b>6</b>	<b>32998</b>	<b>1138</b>	<b>32998</b>	<b>1206</b>	<b>31947</b>	<b>5069</b>	<b>32002</b>	<b>1177</b>
Yukon	5431	408	1011	2	136	0	139	9	1009	60	N.C.	N.C.	N.C.	N.C.	N.C.	N.C.	N.C.	N.C.	N.C.	N.C.	N.C.	N.C.	N.C.	N.C.
Northwest Territories	1766	193	1602	10	147	1	158	5	1602	115	N.C.	N.C.	N.C.	N.C.	N.C.	N.C.	N.C.	N.C.	N.C.	N.C.	N.C.	1602	327	N.C.
Nunavut	5469	396	3252	7	230	3	240	234	3252	156	N.C.	N.C.	N.C.	N.C.	N.C.	N.C.	N.C.	N.C.	N.C.	N.C.	N.C.	N.C.	N.C.	N.C.
<b>Territories</b>	<b>12666</b>	<b>997</b>	<b>5865</b>	<b>19</b>	<b>513</b>	<b>4</b>	<b>537</b>	<b>248</b>	<b>5863</b>	<b>331</b>	<b>N.C.</b>	<b>N.C.</b>	<b>N.C.</b>	<b>N.C.</b>	<b>N.C.</b>	<b>N.C.</b>	<b>N.C.</b>	<b>N.C.</b>	<b>N.C.</b>	<b>N.C.</b>	<b>1602</b>	<b>327</b>	<b>N.C.</b>	<b>N.C.</b>
<b>CANADA</b>	<b>2798699</b>	<b>353283</b>	<b>1086741</b>	<b>2079</b>	<b>18965</b>	<b>43785</b>	<b>67074</b>	<b>5304</b>	<b>946314</b>	<b>46782</b>	<b>360731</b>	<b>1434</b>	<b>737</b>	<b>5758</b>	<b>861</b>	<b>3804</b>	<b>361436</b>	<b>8639</b>	<b>360838</b>	<b>9722</b>	<b>321967</b>	<b>29511</b>	<b>303365</b>	<b>9652</b>

The data in the RVDSS report represent surveillance data available at the time of writing. Data not collected by reporting lab denoted by N.C.

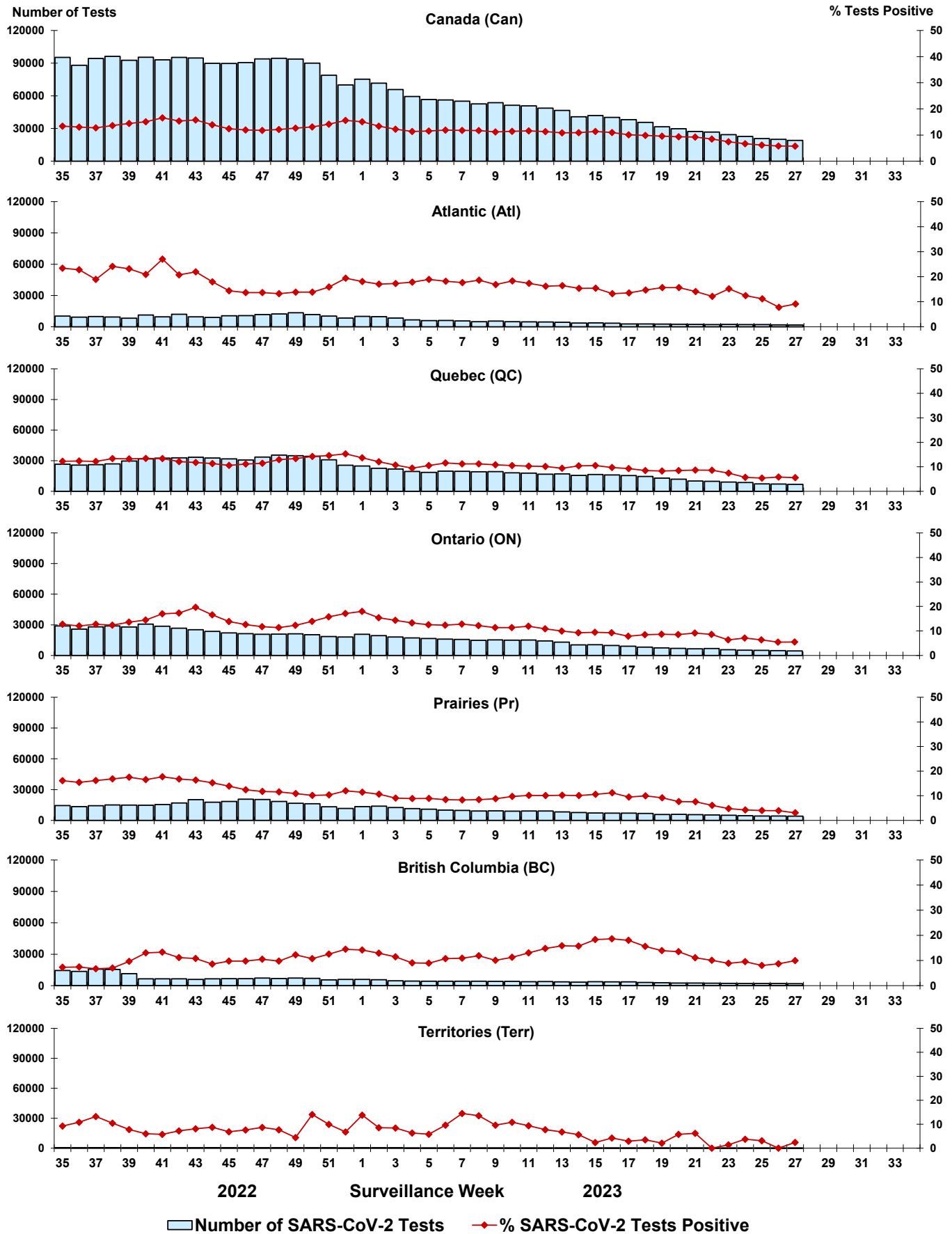
Some specimens from Yukon (YT) are sent to reference laboratories in British Columbia and reported results reflect specimens identified as originating from YT.

Results from British Columbia comprise of specimens from the following sites: Children's and Women's Hospital Laboratory, Fraser Health Medical Microbiology Laboratory, Island Health, Providence Health Care, Vancouver Coastal Health sites, Victoria General Hospital, BCCDC Public Health Laboratory, Interior Health Authority sites and Northern Health Authority sites.

Due to different testing protocols of laboratories across Canada, influenza A subtype detection counts may not be included in total influenza A detection counts. Total influenza A and B positive counts are used to calculate percentage of tests positive.

Delays in the reporting of data may cause data to change retrospectively. Due to these delays, the sum of weekly report totals do not add up to cumulative totals.

**Figure 3: Positive severe acute respiratory syndrome coronavirus 2 (SARS-CoV-2) tests (%) in Canada by region by surveillance week**



Note: Differences in positivity between jurisdictions can reflect differences in testing practices. Please interpret with caution.

Figure 4: Positive Influenza (Flu) tests (%) in Canada by region by surveillance week

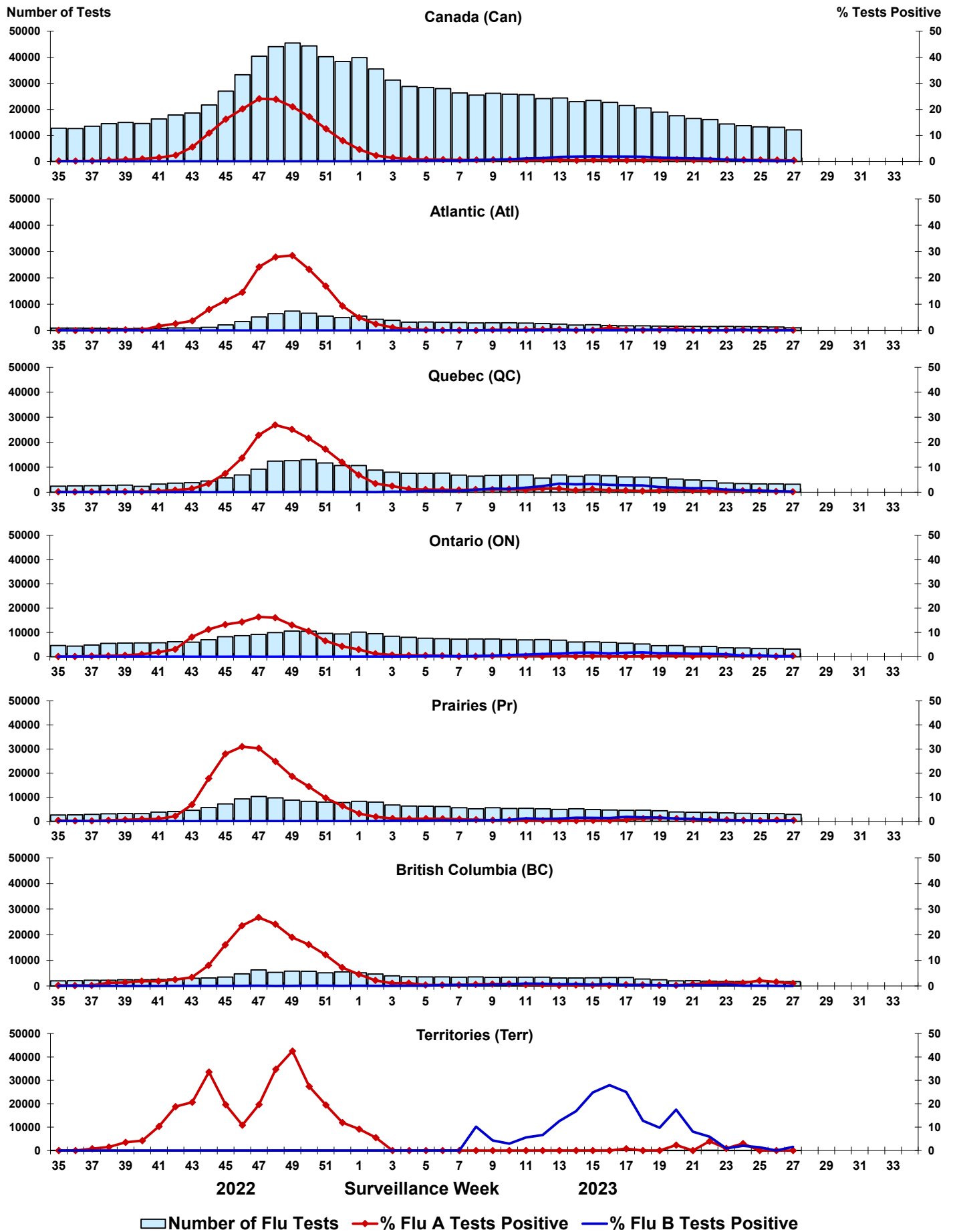


Figure 5: Positive Respiratory syncytial virus (RSV) tests (%) in Canada by region by surveillance week

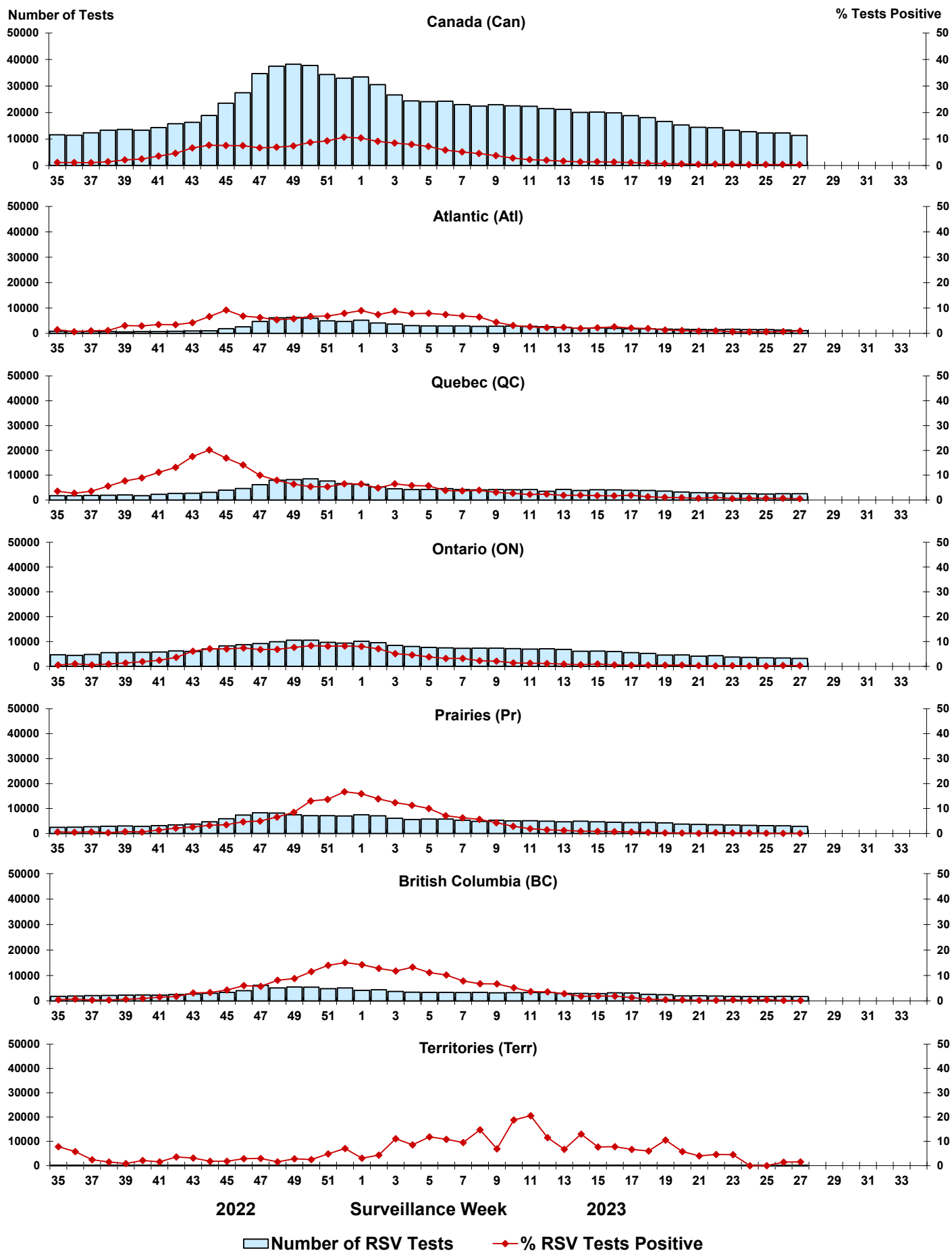




Figure 6: Positive Human parainfluenza virus (HPIV) tests (%) in Canada by region by surveillance week

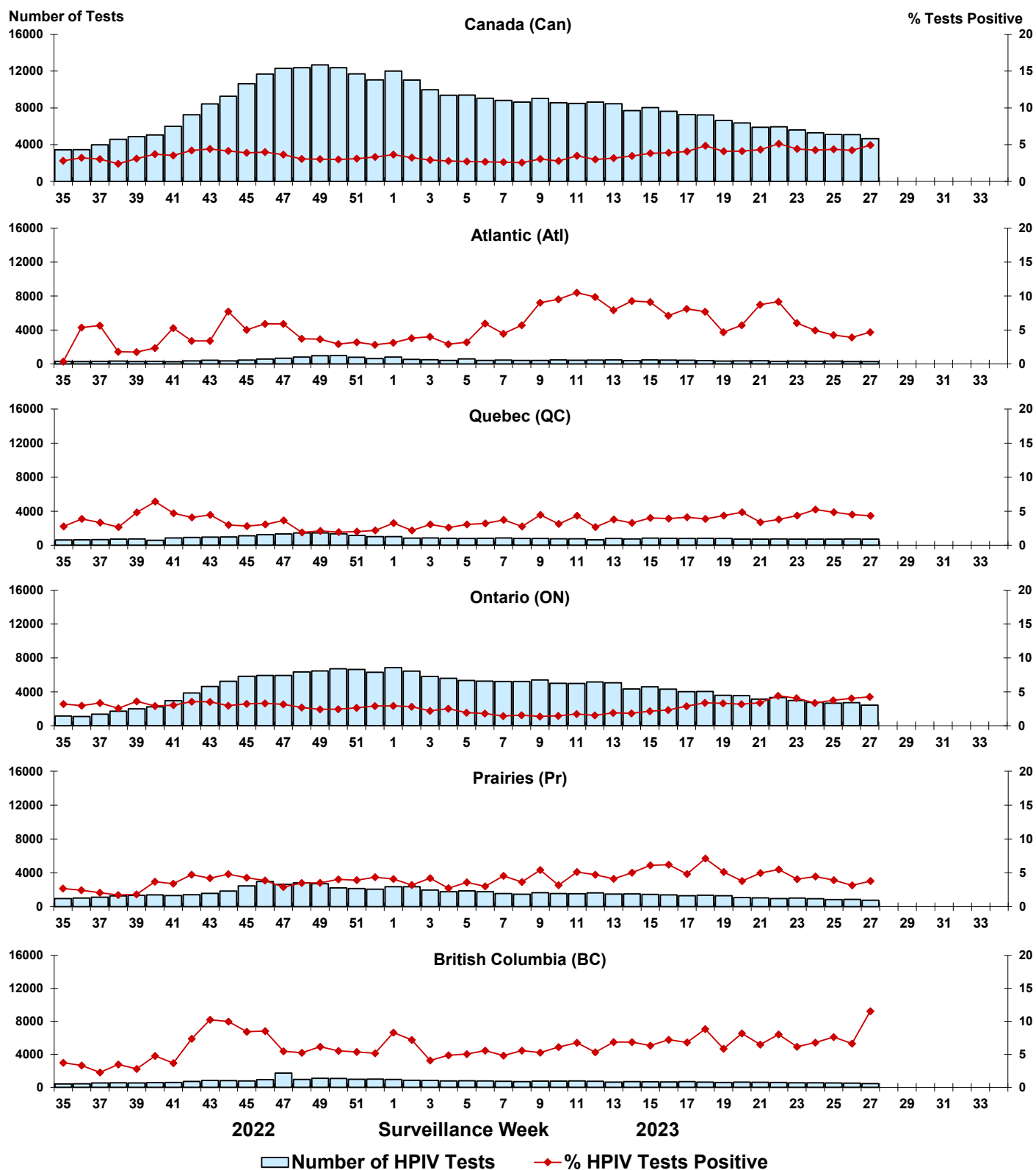


Figure 7: Positive Adenovirus (ADV) tests (%) in Canada by region by surveillance week

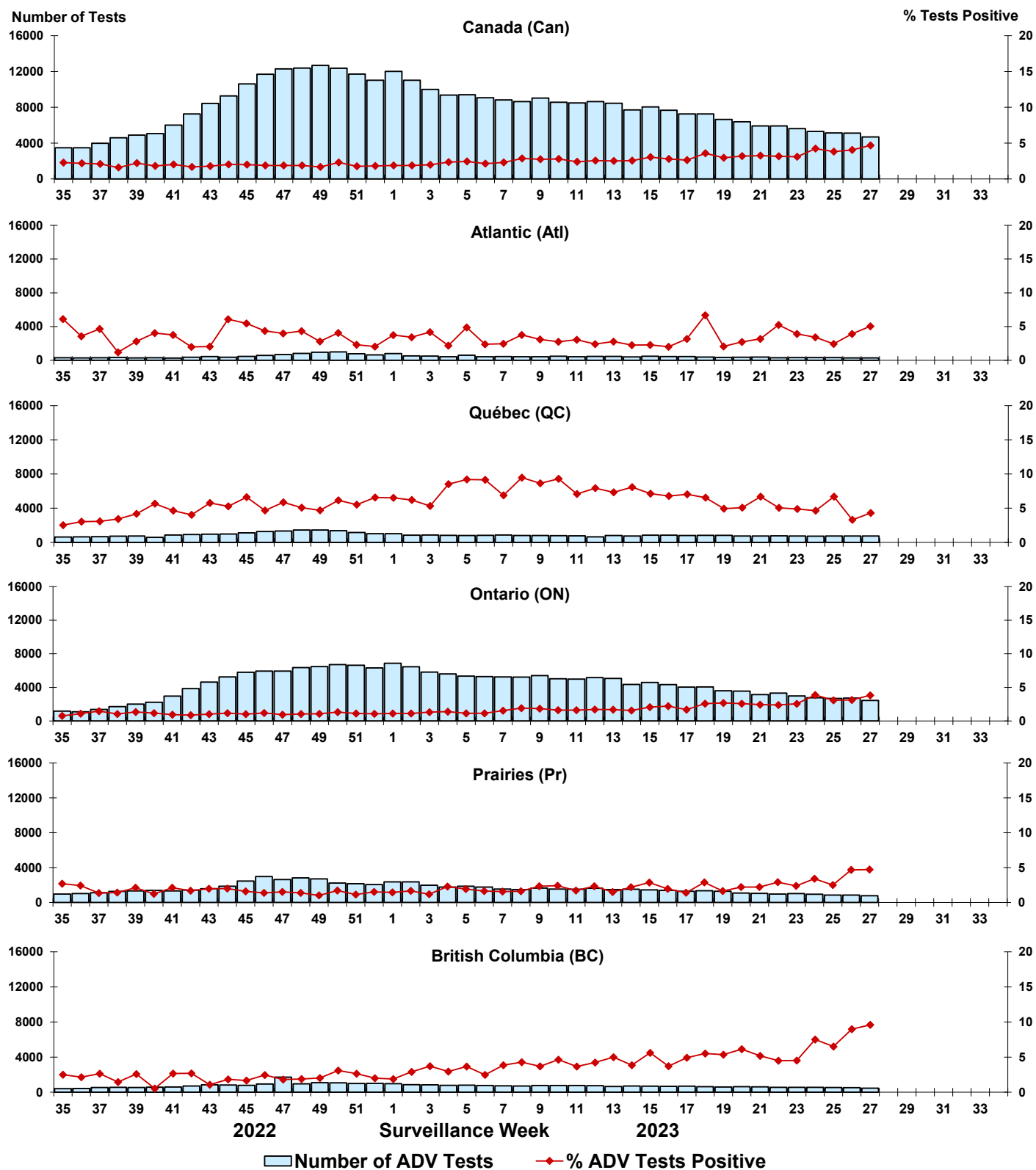


Figure 8: Positive Human metapneumovirus (HMPV) tests (%) in Canada by region by surveillance week

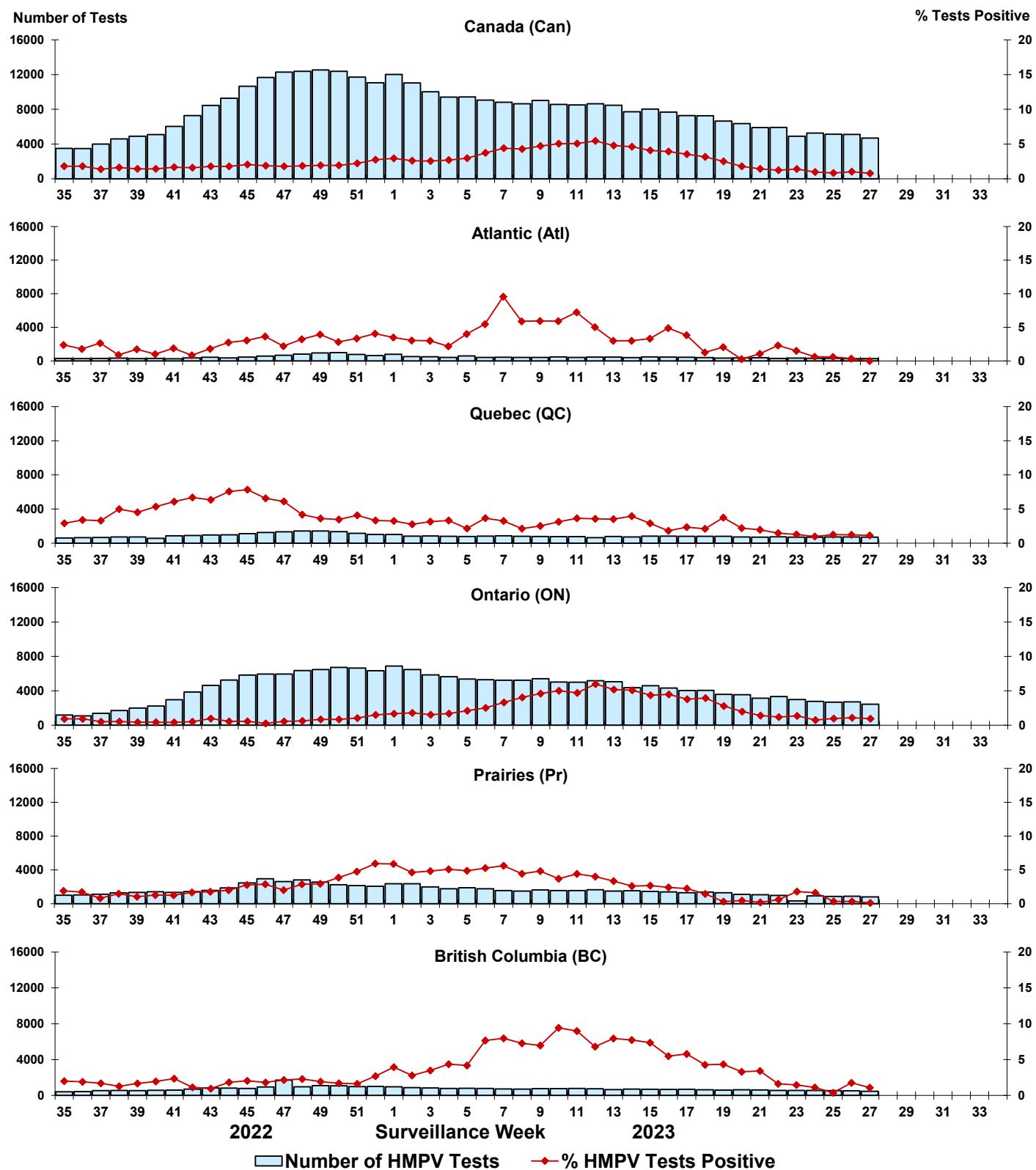


Figure 9: Positive Enterovirus/Rhinovirus (EV/RV) tests (%) in Canada by region by surveillance week

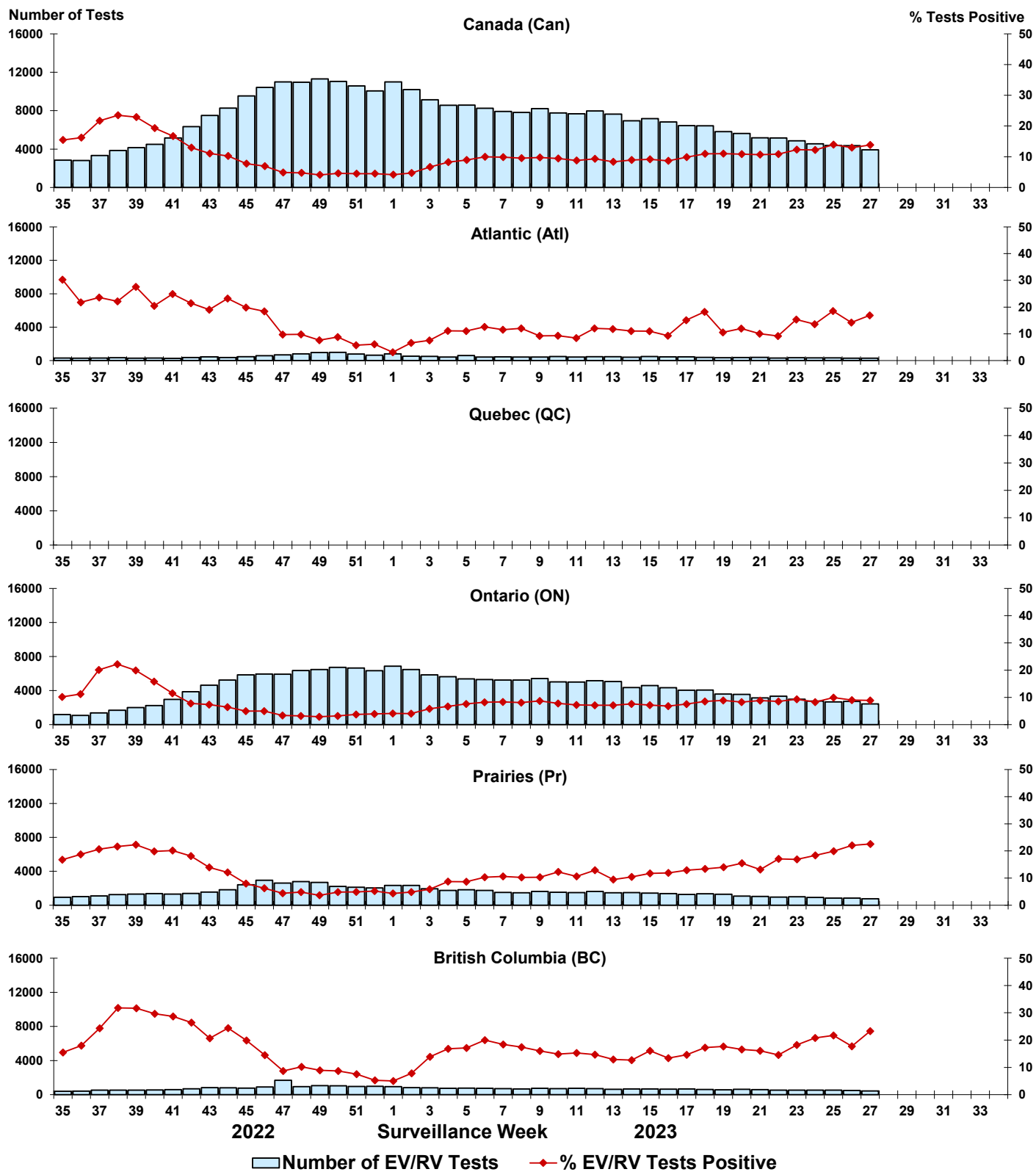


Figure 10: Positive Human coronavirus (HCoV) tests (%) in Canada by region by surveillance week

