

# RESPIRATORY VIRUS DETECTION REPORT

August 27 to September 2, 2023  
(Surveillance Week 2023-35)



Please note that the Respiratory Virus Detection Surveillance System (RVDSS) is a sentinel laboratory surveillance system that does not capture all respiratory virus testing performed in Canada; differences may exist between the data presented in this report and provincial/territorial epidemiological reports. SARS-CoV-2 laboratory data is included in this report to facilitate the comparison of positivity with other respiratory viruses. Interpretation should be made with caution as testing practices differ among viruses.

For additional SARS-CoV-2 surveillance information, please refer to the [COVID-19 epidemiology update](#).

## Overall Summary

In week 35 (week ending September 2, 2023) in Canada, participating RVDSS laboratories reported 3,305 detections of SARS-CoV-2 from 21,886 tests (15.1% positive). Among non-SARS-CoV-2 respiratory viruses, where test volumes are lower (range of 4,573 to 13,360 tests), activity of enterovirus/rhinovirus is highest.

- There has been an observed increase in national SARS-CoV-2 percent positivity over the latest eight reporting weeks.
- While activity of enterovirus/rhinovirus is highest, it remains below expected levels typical of this time of year (612 detections; 12.5% positive).
- Activity of all other non-SARS-CoV-2 respiratory viruses is low and near expected levels typical of this time of year.
- 30/34 sentinel laboratories reported surveillance data

## Abbreviations

ADV: Adenovirus

Atl: Atlantic Canada

BC: British Columbia

Can: Canada

EORLA: Eastern Ontario Regional Laboratory Association

EV/RV: Enterovirus/Rhinovirus

Flu: Influenza

Flu A(H1N1)pdm09: Influenza A(H1N1)pdm09

Flu A(H3): Influenza A(H3N2)

Flu A (UnS): Influenza A(Unsubtyped)

HCoV: Human coronavirus 229E/OC43/NL63/HKU1

HMPV: Human metapneumovirus

HPIV: Human parainfluenza virus

HSC: Health Sciences Centre

N.C.: Data not collected

N.R.: Data not reported for current week

ON: Ontario

PR: Prairies

P.H.O.L.: Public Health Ontario Laboratory

QC: Quebec

RSV: Respiratory syncytial virus

RVDSS: Respiratory Virus Detection Surveillance System

SARS-CoV-2: Severe acute respiratory syndrome coronavirus 2

Terr: Territories of Canada

UHN: University Health Network

© His Majesty the King in Right of Canada, as represented by the Minister of Health, 2021

ISSN: 2564-2359 | Cat.: HP38-7E-PDF | Pub.: 210284

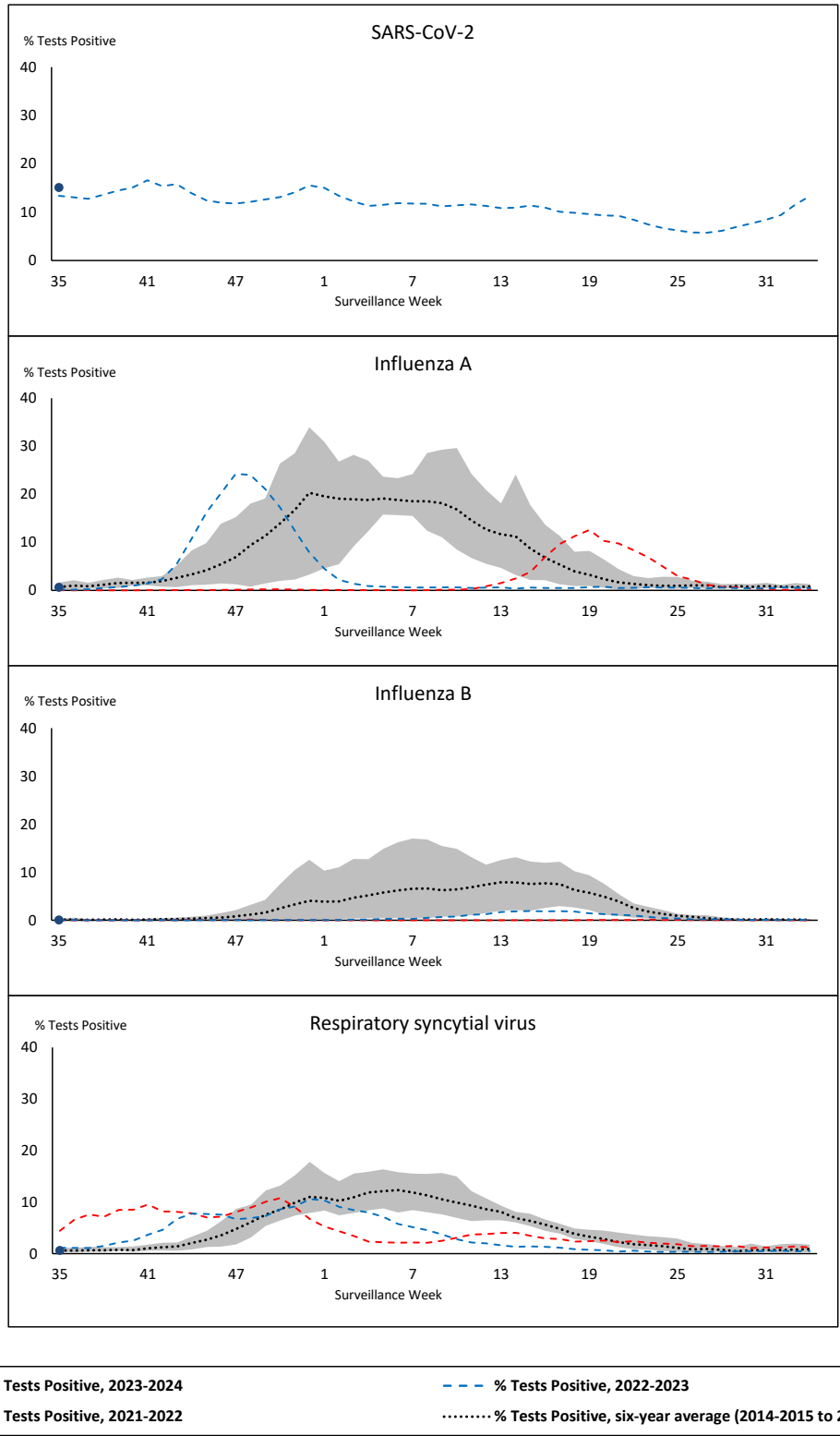


Public Health  
Agency of Canada

Agence de la santé  
publique du Canada

Canada

**Figure 1: Positive severe acute respiratory syndrome coronavirus 2 (SARS-CoV-2), influenza, and respiratory syncytial virus tests (%) reported by participating laboratories in Canada by surveillance week compared to average and range from 2014-2015 to 2019-2020 season**



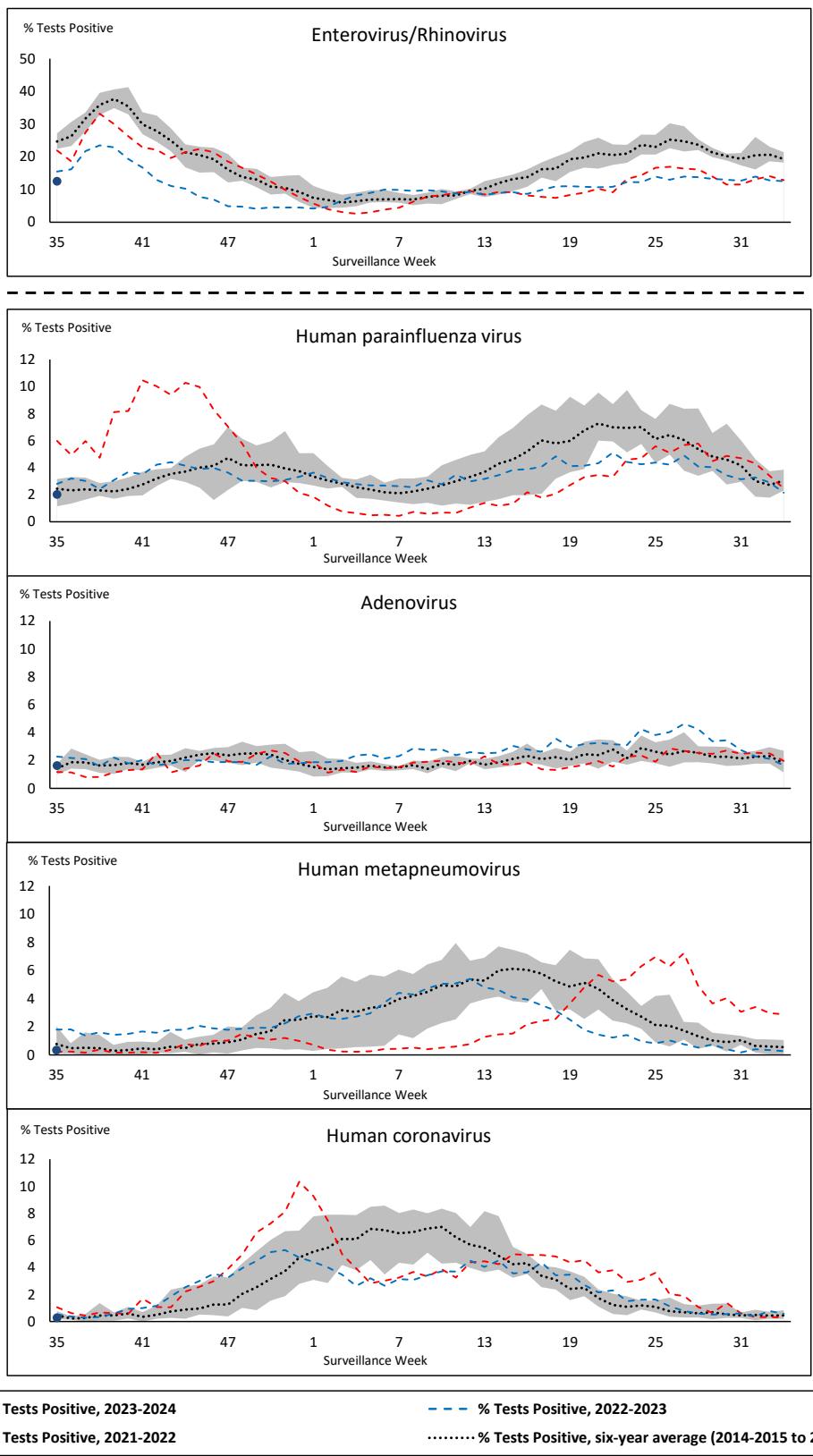
Shaded area represents the maximum and minimum % of respiratory virus tests positive reported by week from seasons 2014-2015 to 2019-2020

Note: Changes to testing practices during the COVID-19 pandemic may cause substantial changes to indicator estimates from previous years. Collection of laboratory testing practice meta-data to understand these changes is ongoing. Interpret trends with caution.

Note: SARS-CoV-2 surveillance was integrated into RVDSS at the beginning of the 2022-2023 season; no prior data is available for historical comparison.

Note: Data from week 11 of the 2019-2020 season onwards are excluded from the historical comparison due to the COVID-19 pandemic.

**Figure 2: Positive tests (%) of other respiratory viruses reported by participating laboratories in Canada by surveillance week compared to average and range from 2014-2015 to 2019-2020 season**



Shaded area represents the maximum and minimum % of respiratory virus tests positive reported by week from seasons 2014-2015 to 2019-2020

Note: Changes to testing practices during the COVID-19 pandemic may cause substantial changes to indicator estimates from previous years. Collection of laboratory testing practice meta-data to understand these changes is ongoing. Interpret trends with caution.

Note: Data from week 11 of the 2019-2020 season onwards are excluded from the historical comparison due to the COVID-19 pandemic.

Note: % Tests Positive scale changes across the dashed line

**Table 1: Respiratory virus detections for the week ending September 2, 2023 (surveillance week 2023-35)**

Reporting Laboratory	SARS-CoV-2 Tested	SARS-CoV-2 Positive	Flu Tested	A(H1)pdm09 Positive	A(H3) Positive	A(UnS) Positive	Total Flu A Positive	Total Flu B Positive	RSV Tested	RSV Positive	HPIV Tested	HPIV 1 Positive	HPIV 2 Positive	HPIV 3 Positive	HPIV 4 Positive	Other HPIV Positive	ADV Tested	ADV Positive	HMPV Tested	HMPV Positive	EV/RV Tested	EV/RV Positive	HCoV Tested	HCoV Positive	
Newfoundland	488	79	283	0	0	0	0	0	283	0	283	0	0	1	3	0	283	3	283	0	283	63	283	0	
Prince Edward Island	109	13	9	0	0	0	0	0	9	0	7	0	0	0	0	0	7	1	7	0	7	2	7	0	
Nova Scotia	871	173	332	0	0	0	0	0	332	0	23	1	0	0	0	0	23	1	23	0	23	2	23	0	
New Brunswick	642	92	360	0	0	0	0	0	345	0	49	0	0	0	0	0	49	2	49	0	49	8	49	0	
<b>Atlantic</b>	<b>2110</b>	<b>357</b>	<b>984</b>	<b>0</b>	<b>0</b>	<b>0</b>	<b>0</b>	<b>0</b>	<b>969</b>	<b>0</b>	<b>362</b>	<b>1</b>	<b>0</b>	<b>1</b>	<b>3</b>	<b>0</b>	<b>362</b>	<b>7</b>	<b>362</b>	<b>0</b>	<b>362</b>	<b>75</b>	<b>362</b>	<b>0</b>	
Région Nord-Est	1158	149	827	0	0	0	0	0	145	1	48	1	1	0	4	0	48	1	48	3	N.C.	N.C.	48	0	
Québec-Chaudière-Appalaches	1582	226	401	0	0	1	1	1	401	7	186	1	0	0	1	0	190	12	186	2	N.C.	N.C.	186	0	
Centre-du-Québec	1507	261	195	0	0	1	1	0	193	3	28	2	1	0	1	0	28	1	28	0	N.C.	N.C.	28	1	
Montréal-Laval	2919	458	1056	0	0	4	4	1	960	7	550	8	0	2	3	0	550	7	551	4	N.C.	N.C.	550	2	
Ouest du Québec	1146	221	277	0	0	1	1	1	277	4	14	1	1	1	2	0	14	1	14	2	N.C.	N.C.	14	1	
Montérégie	1046	210	568	0	0	1	1	2	550	7	6	0	0	0	0	0	6	0	6	0	N.C.	N.C.	6	0	
<b>Province of Québec</b>	<b>9358</b>	<b>1525</b>	<b>3324</b>	<b>0</b>	<b>0</b>	<b>8</b>	<b>8</b>	<b>5</b>	<b>2526</b>	<b>29</b>	<b>832</b>	<b>13</b>	<b>3</b>	<b>3</b>	<b>11</b>	<b>0</b>	<b>836</b>	<b>22</b>	<b>833</b>	<b>11</b>	<b>N.C.</b>	<b>N.C.</b>	<b>832</b>	<b>4</b>	
P.H.O.L. - Ottawa	289	115	163	1	0	0	1	0	163	3	104	0	0	0	0	1	104	0	104	0	104	14	104	0	
EORLA	908	89	305	1	0	0	1	0	305	8	14	0	0	0	0	0	14	0	14	0	14	1	14	0	
P.H.O.L. - Kingston	187	53	60	0	0	0	0	0	60	0	49	0	0	0	0	5	49	0	49	0	49	10	49	0	
UHN / Mount Sinai Hospital	797	39	405	0	0	1	1	1	405	1	19	0	0	2	0	0	19	0	19	0	19	0	19	0	
P.H.O.L. - Toronto	569	80	728	7	2	0	5	0	728	3	682	0	0	0	0	29	682	11	682	0	682	135	682	3	
Shared Hospital Laboratory	863	69	863	1	3	0	4	0	863	13	861	0	0	0	0	9	861	8	864	3	864	52	864	0	
P.H.O.L. - Sault Ste. Marie	2	0	3	0	0	0	0	0	3	0	3	0	0	0	0	0	3	0	3	0	3	0	3	0	
P.H.O.L. - Timmins	11	0	6	0	0	0	0	0	6	0	6	0	0	0	0	0	6	0	6	0	6	1	6	0	
St. Joseph's - London	N.R.	N.R.	N.R.	N.R.	N.R.	N.R.	N.R.	N.R.	N.R.	N.R.	N.R.	N.R.	N.R.	N.R.	N.R.	N.R.	N.R.	N.R.	N.R.	N.R.	N.R.	N.R.	N.R.	N.R.	N.R.
P.H.O.L. - London	276	78	169	0	0	0	0	1	169	0	129	0	0	0	0	7	129	0	129	0	129	17	129	0	
P.H.O.L. - Orillia	15	2	28	0	0	0	0	0	28	1	27	0	0	0	0	1	27	0	27	0	27	5	27	0	
P.H.O.L. - Thunder Bay	42	9	21	0	0	0	0	0	21	0	12	0	0	0	0	0	12	1	12	0	12	5	12	0	
P.H.O.L. - Sudbury	10	2	12	0	0	0	0	0	12	0	11	0	0	0	0	0	11	0	11	0	11	4	11	0	
P.H.O.L. - Hamilton	247	73	179	0	0	0	0	0	179	1	103	0	0	0	0	3	103	1	103	0	103	15	103	0	
P.H.O.L. - Peterborough	27	5	34	0	0	0	0	0	34	0	31	0	0	0	0	0	31	0	31	0	31	14	31	0	
St. Joseph's - Hamilton	1354	111	1187	0	0	3	3	2	1187	3	1187	0	0	4	0	0	1187	6	1187	4	1187	67	0	0	
Sault Area Hospital	47	3	37	0	0	0	0	0	37	0	37	0	0	0	0	0	37	0	37	0	37	7	47	0	
<b>Province of Ontario</b>	<b>5644</b>	<b>728</b>	<b>4200</b>	<b>10</b>	<b>5</b>	<b>4</b>	<b>15</b>	<b>4</b>	<b>4200</b>	<b>33</b>	<b>3275</b>	<b>0</b>	<b>0</b>	<b>6</b>	<b>0</b>	<b>55</b>	<b>3275</b>	<b>27</b>	<b>3278</b>	<b>7</b>	<b>3278</b>	<b>347</b>	<b>2101</b>	<b>3</b>	
Manitoba	1144	154	942	0	0	2	2	0	942	4	49	0	0	0	1	0	49	6	72	0	49	21	72	0	
Saskatchewan	982	66	422	0	0	1	1	0	412	1	153	1	2	0	0	0	153	7	153	1	153	28	153	2	
Alberta	N.R.	N.R.	1355	3	3	0	6	0	1282	2	468	1	1	1	2	0	468	9	342	0	456	50	468	3	
<b>Prairies</b>	<b>2126</b>	<b>220</b>	<b>2719</b>	<b>3</b>	<b>3</b>	<b>3</b>	<b>9</b>	<b>0</b>	<b>2636</b>	<b>7</b>	<b>670</b>	<b>2</b>	<b>3</b>	<b>1</b>	<b>3</b>	<b>0</b>	<b>670</b>	<b>22</b>	<b>567</b>	<b>1</b>	<b>658</b>	<b>99</b>	<b>693</b>	<b>5</b>	
<b>British Columbia</b>	<b>2648</b>	<b>475</b>	<b>2133</b>	<b>23</b>	<b>11</b>	<b>3</b>	<b>52</b>	<b>0</b>	<b>2133</b>	<b>7</b>	<b>612</b>	<b>1</b>	<b>2</b>	<b>0</b>	<b>9</b>	<b>0</b>	<b>612</b>	<b>16</b>	<b>612</b>	<b>1</b>	<b>585</b>	<b>91</b>	<b>585</b>	<b>1</b>	
Yukon	N.R.	N.R.	N.R.	N.R.	N.R.	N.R.	N.R.	N.R.	N.R.	N.R.	N.C.	N.C.	N.C.	N.C.	N.C.	N.C.	N.C.	N.C.	N.C.	N.C.	N.C.	N.C.	N.C.	N.C.	
Northwest Territories	N.R.	N.R.	N.R.	N.R.	N.R.	N.R.	N.R.	N.R.	N.R.	N.R.	N.C.	N.C.	N.C.	N.C.	N.C.	N.C.	N.C.	N.C.	N.C.	N.C.	N.C.	N.R.	N.R.	N.C.	
Nunavut	N.R.	N.R.	N.R.	N.R.	N.R.	N.R.	N.R.	N.R.	N.R.	N.R.	N.C.	N.C.	N.C.	N.C.	N.C.	N.C.	N.C.	N.C.	N.C.	N.C.	N.C.	N.C.	N.C.	N.C.	
<b>Territories</b>	<b>N.R.</b>	<b>N.R.</b>	<b>N.R.</b>	<b>N.R.</b>	<b>N.R.</b>	<b>N.R.</b>	<b>N.R.</b>	<b>N.R.</b>	<b>N.R.</b>	<b>N.R.</b>	<b>N.C.</b>	<b>N.C.</b>	<b>N.C.</b>	<b>N.C.</b>	<b>N.C.</b>	<b>N.C.</b>	<b>N.C.</b>	<b>N.C.</b>	<b>N.C.</b>	<b>N.C.</b>	<b>N.C.</b>	<b>N.R.</b>	<b>N.R.</b>	<b>N.C.</b>	
<b>CANADA</b>	<b>21886</b>	<b>3305</b>	<b>13360</b>	<b>36</b>	<b>19</b>	<b>18</b>	<b>84</b>	<b>9</b>	<b>12464</b>	<b>76</b>	<b>5751</b>	<b>17</b>	<b>8</b>	<b>11</b>	<b>26</b>	<b>55</b>	<b>5755</b>	<b>94</b>	<b>5652</b>	<b>20</b>	<b>4883</b>	<b>612</b>	<b>4573</b>	<b>13</b>	

The data in the RVDSS report represent surveillance data available at the time of writing. Data missing from the current week are denoted by N.R. Data not collected by reporting lab denoted by N.C.

Some specimens from Yukon (YT) are sent to reference laboratories in British Columbia and reported results reflect specimens identified as originating from YT.

Results from British Columbia comprise of specimens from the following sites: Children's and Women's Hospital Laboratory, Fraser Health Medical Microbiology Laboratory, Island Health, Providence Health Care, Vancouver Coastal Health sites, Victoria General Hospital, BCCDC Public Health Laboratory, Interior Health Authority sites and Northern Health Authority sites.

Due to different testing protocols of laboratories across Canada, influenza A subtype detection counts may not be included in total influenza A detection counts. Total influenza A and B positive counts are used to calculate percentage of tests

Delays in the reporting of data may cause data to change retrospectively.

**Table 2: Cumulative respiratory virus detections from August 27, 2023 to September 2, 2023 (surveillance weeks 2023-35 to 2023-35)**

Reporting Laboratory	SARS-CoV-2 Tested	SARS-CoV-2 Positive	Flu Tested	A(H1)pdm09 Positive	A(H3) Positive	A(UnS) Positive	Total Flu A Positive	Total Flu B Positive	RSV Tested	RSV Positive	HPIV Tested	HPIV 1 Positive	HPIV 2 Positive	HPIV 3 Positive	HPIV 4 Positive	Other HPIV Positive	ADV Tested	ADV Positive	HMPV Tested	HMPV Positive	EV/RV Tested	EV/RV Positive	HCoV Tested	HCoV Positive	
Newfoundland	488	79	283	0	0	0	0	0	283	0	283	0	0	1	3	0	283	3	283	0	283	63	283	0	
Prince Edward Island	109	13	9	0	0	0	0	0	9	0	7	0	0	0	0	0	7	1	7	0	7	2	7	0	
Nova Scotia	871	173	332	0	0	0	0	0	332	0	23	1	0	0	0	0	23	1	23	0	23	2	23	0	
New Brunswick	642	92	360	0	0	0	0	0	345	0	49	0	0	0	0	0	49	2	49	0	49	8	49	0	
<b>Atlantic</b>	<b>2110</b>	<b>357</b>	<b>984</b>	<b>0</b>	<b>0</b>	<b>0</b>	<b>0</b>	<b>0</b>	<b>969</b>	<b>0</b>	<b>362</b>	<b>1</b>	<b>0</b>	<b>1</b>	<b>3</b>	<b>0</b>	<b>362</b>	<b>7</b>	<b>362</b>	<b>0</b>	<b>362</b>	<b>75</b>	<b>362</b>	<b>0</b>	
Région Nord-Est	1158	149	827	0	0	0	0	0	145	1	48	1	1	0	4	0	48	1	48	3	N.C.	N.C.	48	0	
Québec-Chaudière-Appalaches	1582	226	401	0	0	1	1	1	401	7	186	1	0	0	1	0	190	12	186	2	N.C.	N.C.	186	0	
Centre-du-Québec	1507	261	195	0	0	1	1	0	193	3	28	2	1	0	1	0	28	1	28	0	N.C.	N.C.	28	1	
Montréal-Laval	2919	458	1056	0	0	4	4	1	960	7	550	8	0	2	3	0	550	7	551	4	N.C.	N.C.	550	2	
Ouest du Québec	1146	221	277	0	0	1	1	1	277	4	14	1	1	1	2	0	14	1	14	2	N.C.	N.C.	14	1	
Montérégie	1046	210	568	0	0	1	1	2	550	7	6	0	0	0	0	0	6	0	6	0	N.C.	N.C.	6	0	
<b>Province of Québec</b>	<b>9358</b>	<b>1525</b>	<b>3324</b>	<b>0</b>	<b>0</b>	<b>8</b>	<b>8</b>	<b>5</b>	<b>2526</b>	<b>29</b>	<b>832</b>	<b>13</b>	<b>3</b>	<b>3</b>	<b>11</b>	<b>0</b>	<b>836</b>	<b>22</b>	<b>833</b>	<b>11</b>	<b>N.C.</b>	<b>N.C.</b>	<b>832</b>	<b>4</b>	
P.H.O.L. - Ottawa	289	115	163	1	0	0	1	0	163	3	104	0	0	0	0	1	104	0	104	0	104	14	104	0	
EOURLA	908	89	305	1	0	0	1	0	305	8	14	0	0	0	0	0	14	0	14	0	14	1	14	0	
P.H.O.L. - Kingston	187	53	60	0	0	0	0	0	60	0	49	0	0	0	0	5	49	0	49	0	49	10	49	0	
UHN / Mount Sinai Hospital	797	39	405	0	0	1	1	1	405	1	19	0	0	2	0	0	19	0	19	0	19	0	19	0	
P.H.O.L. - Toronto	569	80	728	7	2	0	5	0	728	3	682	0	0	0	0	29	682	11	682	0	682	135	682	3	
Shared Hospital Laboratory	863	69	863	1	3	0	4	0	863	13	861	0	0	0	0	9	861	8	864	3	864	52	864	0	
P.H.O.L. - Sault Ste. Marie	2	0	3	0	0	0	0	0	3	0	3	0	0	0	0	0	3	0	3	0	3	0	3	0	
P.H.O.L. - Timmins	11	0	6	0	0	0	0	0	6	0	6	0	0	0	0	0	6	0	6	0	6	1	6	0	
St. Joseph's - London	0	0	0	0	0	0	0	0	0	0	0	0	0	0	0	0	0	0	0	0	0	0	0	0	
P.H.O.L. - London	276	78	169	0	0	0	0	1	169	0	129	0	0	0	0	7	129	0	129	0	129	17	129	0	
P.H.O.L. - Orillia	15	2	28	0	0	0	0	0	28	1	27	0	0	0	0	1	27	0	27	0	27	5	27	0	
P.H.O.L. - Thunder Bay	42	9	21	0	0	0	0	0	21	0	12	0	0	0	0	0	12	1	12	0	12	5	12	0	
P.H.O.L. - Sudbury	10	2	12	0	0	0	0	0	12	0	11	0	0	0	0	0	11	0	11	0	11	4	11	0	
P.H.O.L. - Hamilton	247	73	179	0	0	0	0	0	179	1	103	0	0	0	0	3	103	1	103	0	103	15	103	0	
P.H.O.L. - Peterborough	27	5	34	0	0	0	0	0	34	0	31	0	0	0	0	0	31	0	31	0	31	14	31	0	
St. Joseph's - Hamilton	1354	111	1187	0	0	3	3	2	1187	3	1187	0	0	4	0	0	1187	6	1187	4	1187	67	0	0	
Sault Area Hospital	47	3	37	0	0	0	0	0	37	0	37	0	0	0	0	0	37	0	37	0	37	7	47	0	
<b>Province of Ontario</b>	<b>5644</b>	<b>728</b>	<b>4200</b>	<b>10</b>	<b>5</b>	<b>4</b>	<b>15</b>	<b>4</b>	<b>4200</b>	<b>33</b>	<b>3275</b>	<b>0</b>	<b>0</b>	<b>6</b>	<b>0</b>	<b>55</b>	<b>3275</b>	<b>27</b>	<b>3278</b>	<b>7</b>	<b>3278</b>	<b>347</b>	<b>2101</b>	<b>3</b>	
Manitoba	1144	154	942	0	0	2	2	0	942	4	49	0	0	0	1	0	49	6	72	0	49	21	72	0	
Saskatchewan	982	66	422	0	0	1	1	0	412	1	153	1	2	0	0	0	153	7	153	1	153	28	153	2	
Alberta	0	0	1355	3	3	0	6	0	1282	2	468	1	1	1	2	0	468	9	342	0	456	50	468	3	
<b>Prairies</b>	<b>2126</b>	<b>220</b>	<b>2719</b>	<b>3</b>	<b>3</b>	<b>3</b>	<b>9</b>	<b>0</b>	<b>2636</b>	<b>7</b>	<b>670</b>	<b>2</b>	<b>3</b>	<b>1</b>	<b>3</b>	<b>0</b>	<b>670</b>	<b>22</b>	<b>567</b>	<b>1</b>	<b>658</b>	<b>99</b>	<b>693</b>	<b>5</b>	
<b>British Columbia</b>	<b>2648</b>	<b>475</b>	<b>2133</b>	<b>23</b>	<b>11</b>	<b>3</b>	<b>52</b>	<b>0</b>	<b>2133</b>	<b>7</b>	<b>612</b>	<b>1</b>	<b>2</b>	<b>0</b>	<b>9</b>	<b>0</b>	<b>612</b>	<b>16</b>	<b>612</b>	<b>1</b>	<b>585</b>	<b>91</b>	<b>585</b>	<b>1</b>	
Yukon	0	0	0	0	0	0	0	0	0	0	N.C.	N.C.	N.C.	N.C.	N.C.	N.C.	N.C.	N.C.	N.C.	N.C.	N.C.	N.C.	N.C.	N.C.	
Northwest Territories	0	0	0	0	0	0	0	0	0	0	N.C.	N.C.	N.C.	N.C.	N.C.	N.C.	N.C.	N.C.	N.C.	N.C.	N.C.	0	0	N.C.	N.C.
Nunavut	0	0	0	0	0	0	0	0	0	0	N.C.	N.C.	N.C.	N.C.	N.C.	N.C.	N.C.	N.C.	N.C.	N.C.	N.C.	N.C.	N.C.	N.C.	N.C.
<b>Territories</b>	<b>0</b>	<b>0</b>	<b>0</b>	<b>0</b>	<b>0</b>	<b>0</b>	<b>0</b>	<b>0</b>	<b>0</b>	<b>0</b>	<b>N.C.</b>	<b>N.C.</b>	<b>N.C.</b>	<b>N.C.</b>	<b>N.C.</b>	<b>N.C.</b>	<b>N.C.</b>	<b>N.C.</b>	<b>N.C.</b>	<b>N.C.</b>	<b>0</b>	<b>0</b>	<b>N.C.</b>	<b>N.C.</b>	
<b>CANADA</b>	<b>21886</b>	<b>3305</b>	<b>13360</b>	<b>36</b>	<b>19</b>	<b>18</b>	<b>84</b>	<b>9</b>	<b>12464</b>	<b>76</b>	<b>5751</b>	<b>17</b>	<b>8</b>	<b>11</b>	<b>26</b>	<b>55</b>	<b>5755</b>	<b>94</b>	<b>5652</b>	<b>20</b>	<b>4883</b>	<b>612</b>	<b>4573</b>	<b>13</b>	

The data in the RVDSS report represent surveillance data available at the time of writing. Data not collected by reporting lab denoted by N.C.

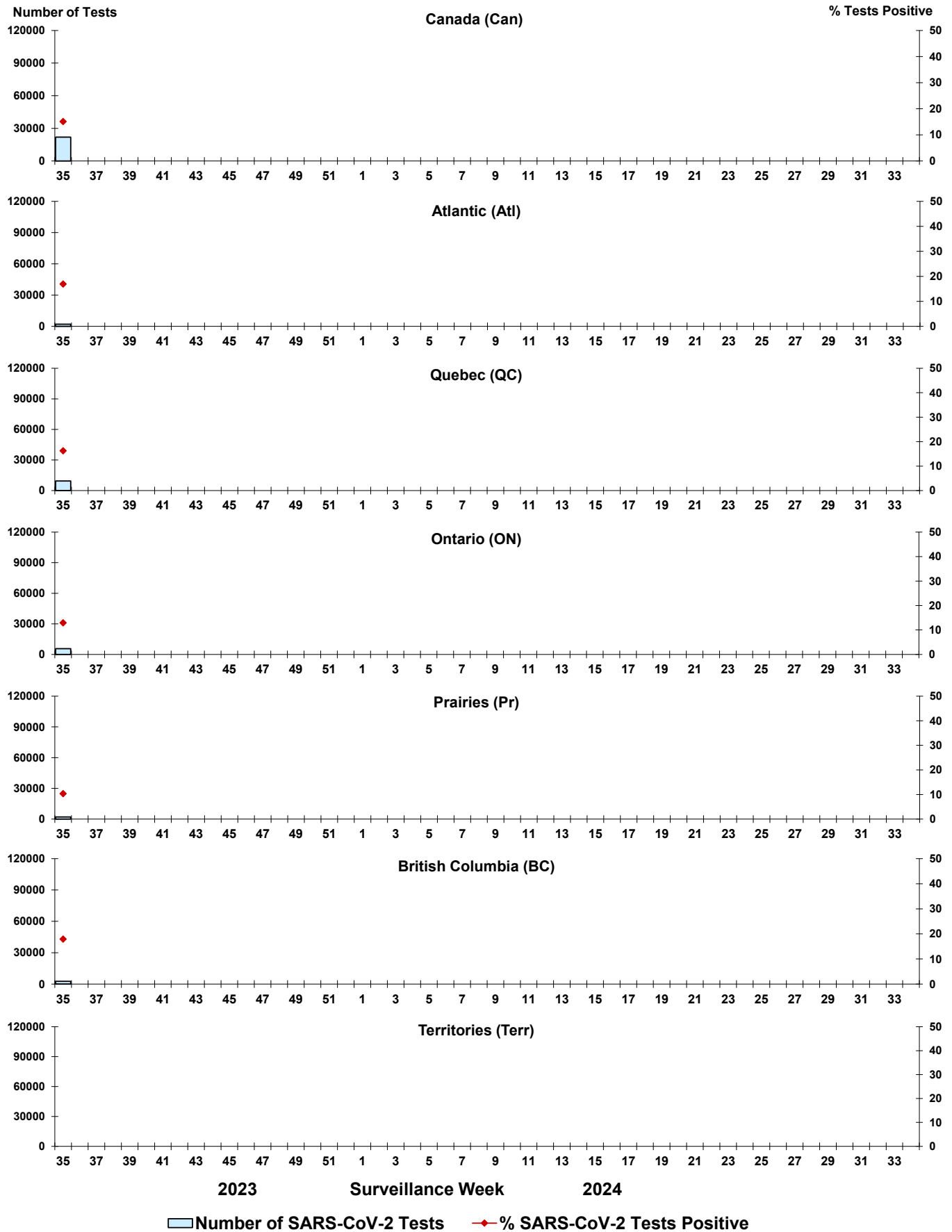
Some specimens from Yukon (YT) are sent to reference laboratories in British Columbia and reported results reflect specimens identified as originating from YT.

Results from British Columbia comprise of specimens from the following sites: Children's and Women's Hospital Laboratory, Fraser Health Medical Microbiology Laboratory, Island Health, Providence Health Care, Vancouver Coastal Health sites, Victoria General Hospital, BCCDC Public Health Laboratory, Interior Health Authority sites and Northern Health Authority sites.

Due to different testing protocols of laboratories across Canada, influenza A subtype detection counts may not be included in total influenza A detection counts. Total influenza A and B positive counts are used to calculate percentage of tests positive.

Delays in the reporting of data may cause data to change retrospectively. Due to these delays, the sum of weekly report totals do not add up to cumulative totals.

**Figure 3: Positive severe acute respiratory syndrome coronavirus 2 (SARS-CoV-2) tests (%) in Canada by region by surveillance week**



Note: Differences in positivity between jurisdictions can reflect differences in testing practices. Please interpret with caution.

Figure 4: Positive Influenza (Flu) tests (%) in Canada by region by surveillance week

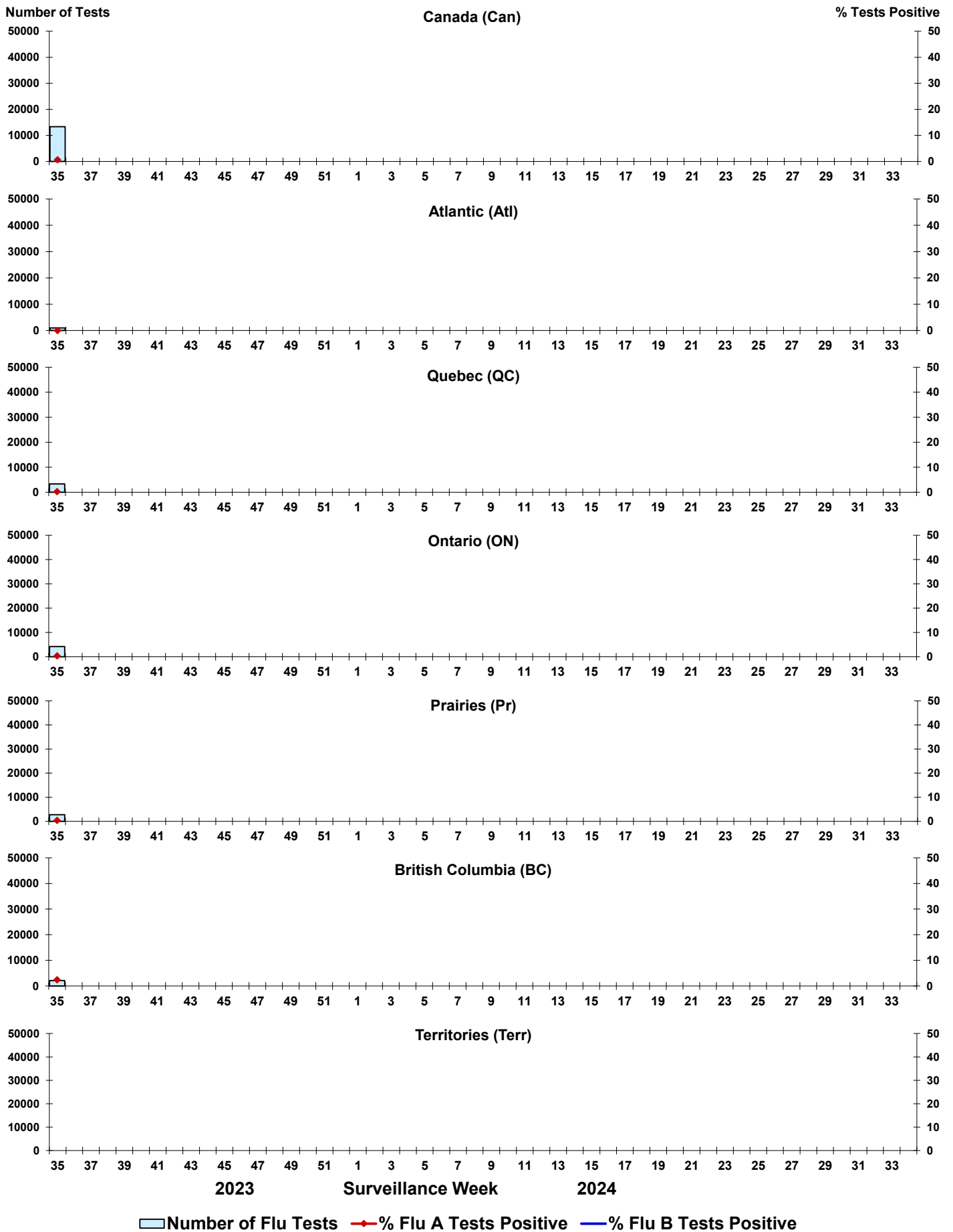


Figure 5: Positive Respiratory syncytial virus (RSV) tests (%) in Canada by region by surveillance week

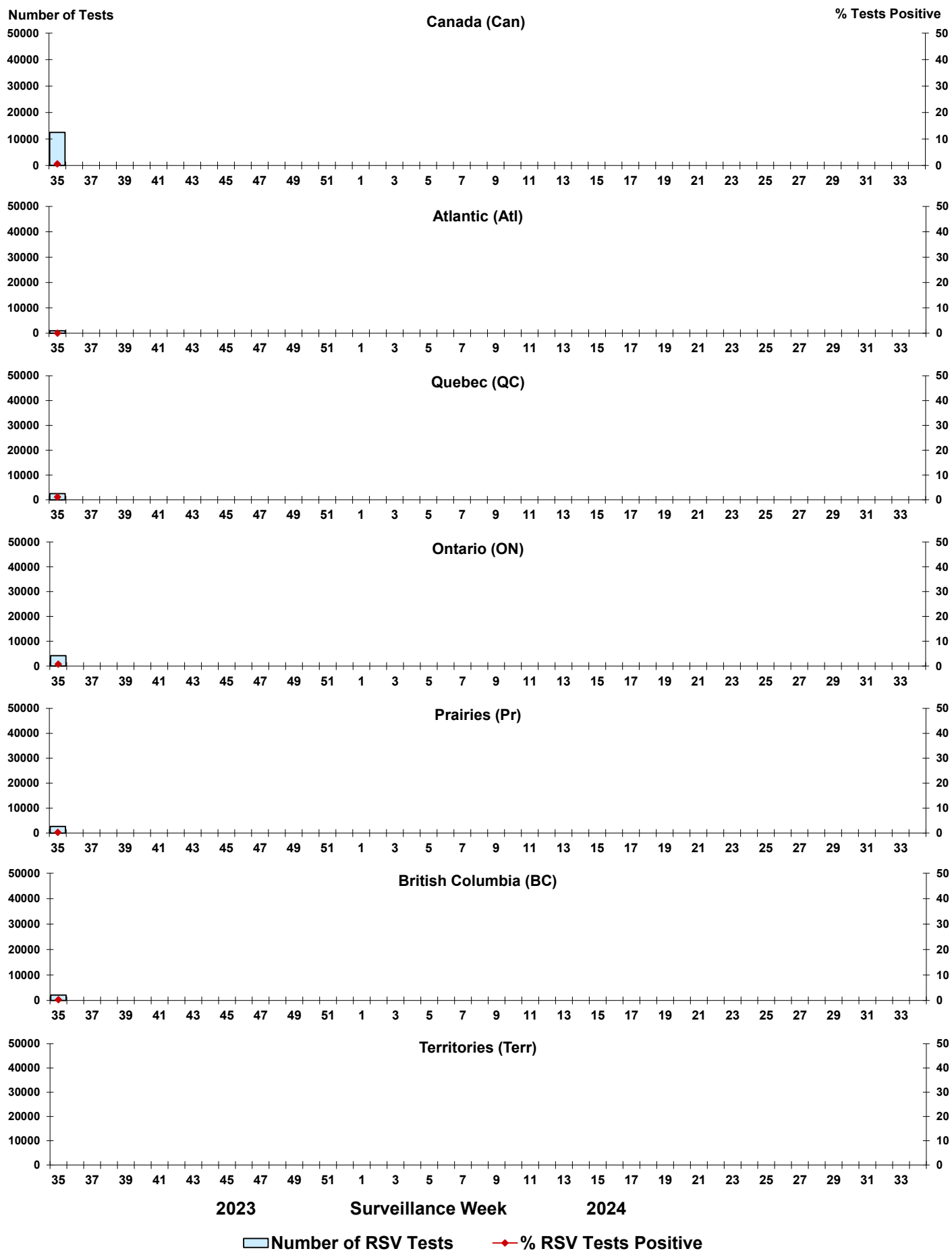




Figure 6: Positive Human parainfluenza virus (HPIV) tests (%) in Canada by region by surveillance week

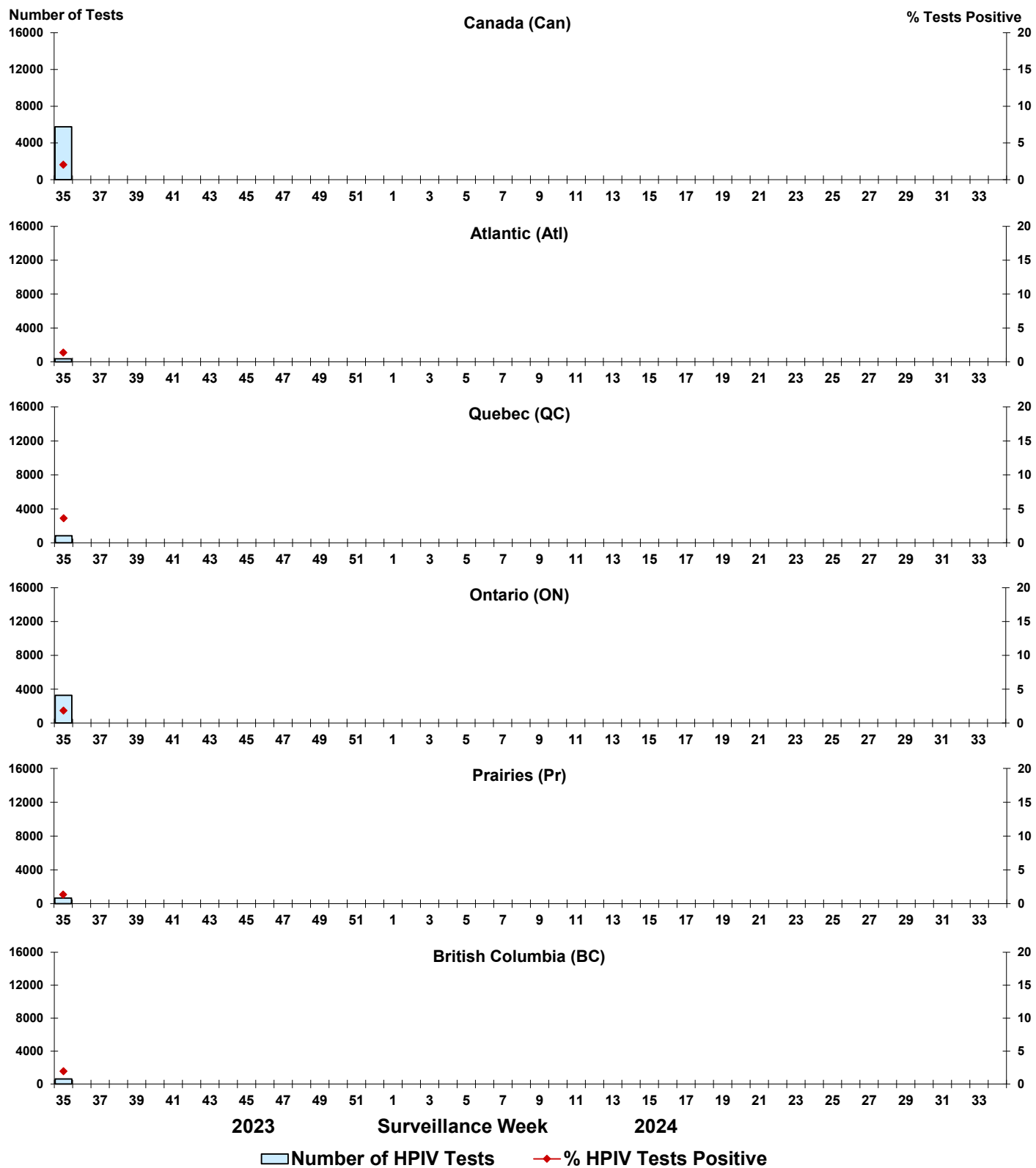


Figure 7: Positive Adenovirus (ADV) tests (%) in Canada by region by surveillance week

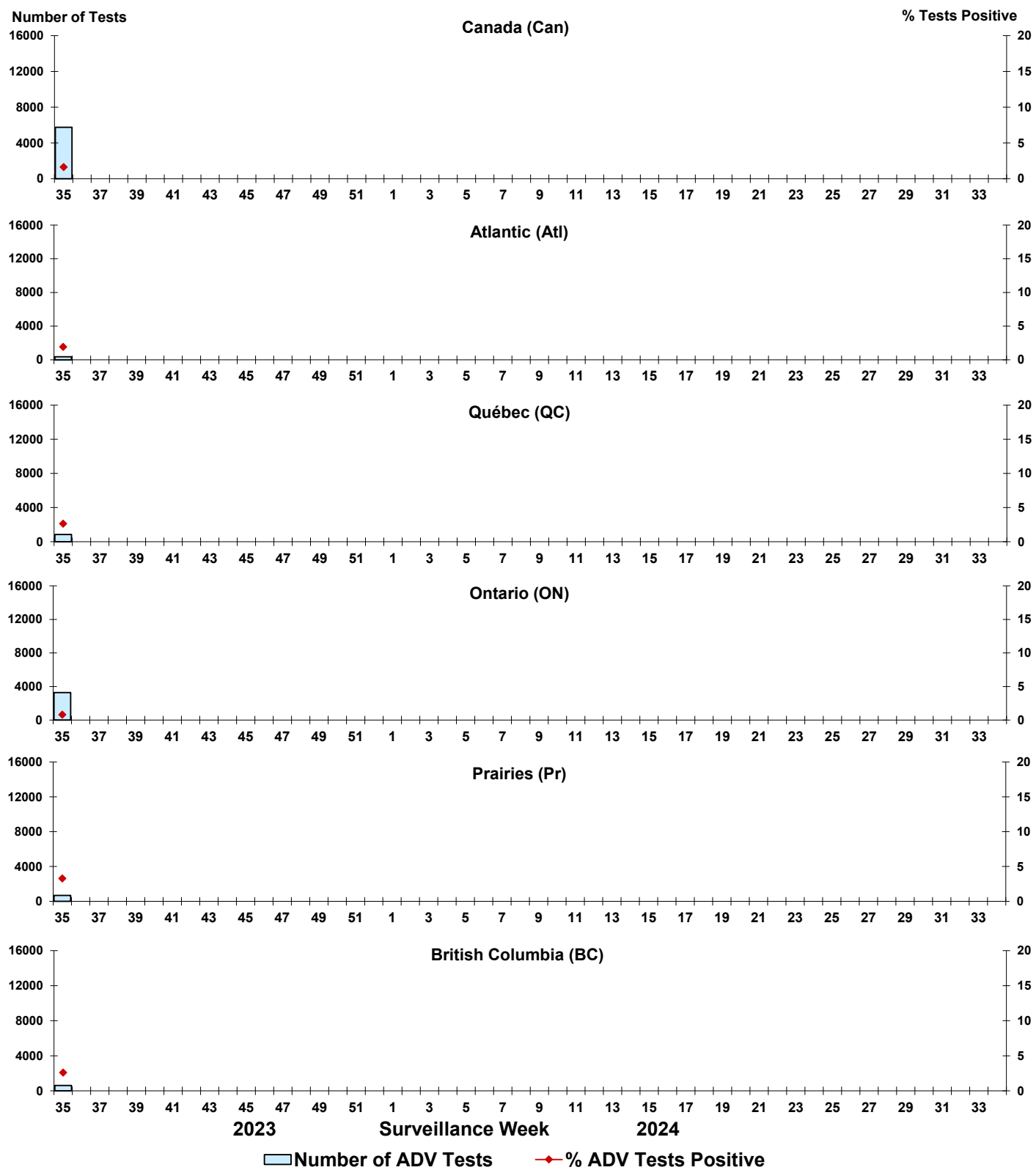


Figure 8: Positive Human metapneumovirus (HMPV) tests (%) in Canada by region by surveillance week

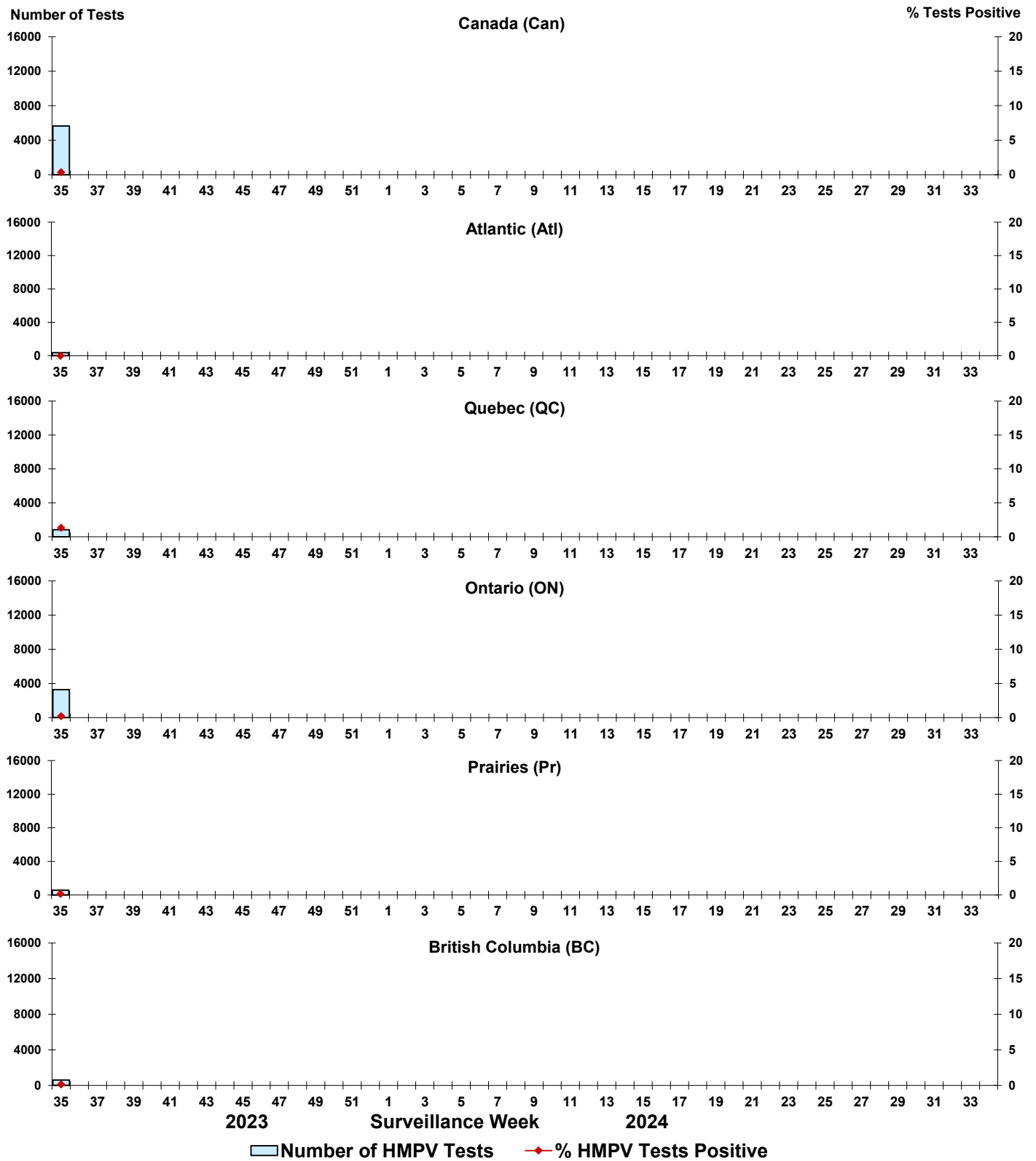


Figure 9: Positive Enterovirus/Rhinovirus (EV/RV) tests (%) in Canada by region by surveillance week

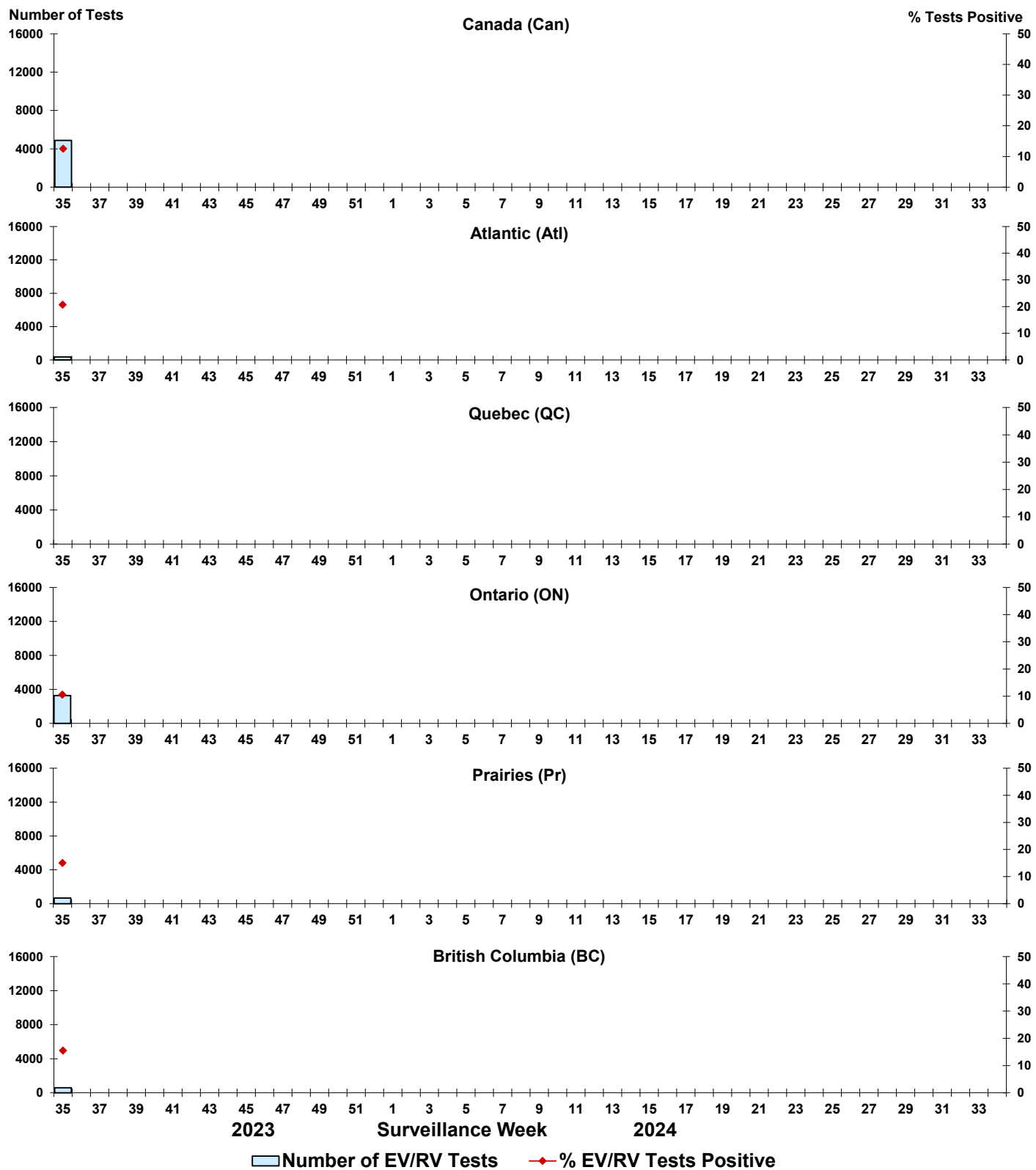


Figure 10: Positive Human coronavirus (HCoV) tests (%) in Canada by region by surveillance week

