

*Where Water
Tells Tales*

The Biosphère

2001-2002 Programmation

Ecowatch
Centre

<http://biosphere.ec.gc.ca>

Canada 

*At the Biosphère,
discover water and the
great ecosystems with your
heart, head and senses...*

- thematic exhibition halls
- multimedia presentations
- interactive technologies
- network of ecowatchers
- leading-edge information centre

*Canada possesses inestimable aquatic resources,
20% of the world's freshwater reserves.*

*The St. Lawrence River, the Great Lakes and
Canada's other great ecosystems play a vital
role in our everyday life... They provide drinking
water for more than 40 million people!*

Essential to life,

*water represents the most important issue
of the new millennium. As a forum where
scientific and popular knowledge come together,
Environment Canada's Biosphère makes the
public aware of the importance of water and
the necessity of protecting it for current and
future generations.*

The Biosphère
inspires visitors
to take action
to preserve one
of our most
invaluable
resources.



1st Prize - "A River to Conserve" Category
Sunrise over Forillon Park by François Gravel, Montréal

Temporary Exhibitions

The St. Lawrence River, from the Great Lakes to the Atlantic

until September 3, 2001

*An exhibition of original photographs
portraying our majestic stream and its various
facets, presented in an aquatic atmosphere.*

*This exhibition is the result of a contest, organized
by the magazine L'Escale Nautique in collaboration
with the Biosphère, and brings together the
16 prize-winning photographs, in large format,
and 40 honorable mention pictures in 5 categories:
A Urban River, The Secrets of Water, Ships of
St. Lawrence, Pleasure Boating and Water
Delights and A River to Conserve.*

The Biosphère
is a two minute-
walk from the
Jean-Drapeau
metro station.

Climate Warning!

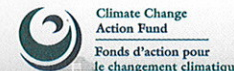


until April 1, 2002

*An exhibition on the theme of global climate
change to better understand our climate and its
extremes, and to make sense of their impact on our
daily lives, particularly on the quality and availability
of water:*

- a TV studio where to become a weather broadcaster through the seasons
- photos and video reports on extreme weather phenomena
- giant caricatures
- a wheel of fortune where doing something makes you a winner
- a multimedia presentation

Climate Warning! was made possible with the financial support of the Climate Change Action Fund, from Government of Canada, and the collaboration of The Weather Network.



Permanent Exhibitions

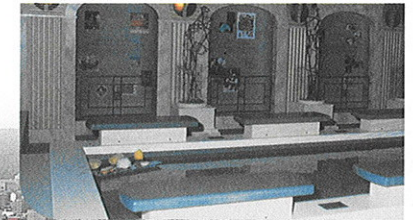
DÉCOUVERTES... the discovery of water

- Source of life and at the heart of civilizations
- Flowing across the planet
- A force, a system, a habitat for life

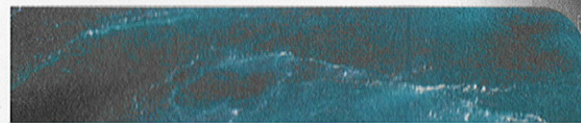
WATER DELIGHTS... here, there and everywhere

- Water and sound experiments
- The quest for water: hardly a delight for some
- Virtual recreation for all seasons
- The soothing song of sea life... and mermaids
- A Greco-Roman pond to dabble in while meditating

Water Delights was made possible with the collaboration of the Canadian International Development Agency and the Canadian Centre for International Studies and Cooperation.



The Biosphère
is an oasis of
tranquility, just
few minutes
from downtown
Montreal.

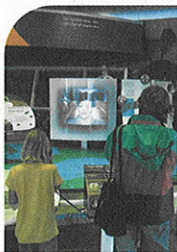


VISIONS... of the St. Lawrence and the Great Lakes

At the very top of the Biosphère

- A journey over the river, like a bird
- Portraits and the state of the ecosystem
- The major environmental issues
- Some aquatic species as environmental indicators

Visions was made possible with the collaboration of Canada Economic Development.



CONNEXIONS... on giant screens

- **Great Ecowatchers:** join Ecowatchers through time and space to see and learn how to protect our majestic stream
- **Climate Warning!:** get the latest information about climate change issue and possible impacts

ObserAction, the Biosphère Ecowatch Network

The Biosphère is managing a network of ecowatchers, made of groups of individuals, organizations and schools, who do ecowatching, monitoring, education or action projects in the field. Get acquainted with their works and discover how commitment can change the world:

- results and experiences to share
- environmental actions made easy
- ideas, challenges and solutions for all

Services

Educational Activities

Educational workshops and recreation activities for elementary and secondary students



Room Rentals

The Biosphère makes an exceptional venue for any special event

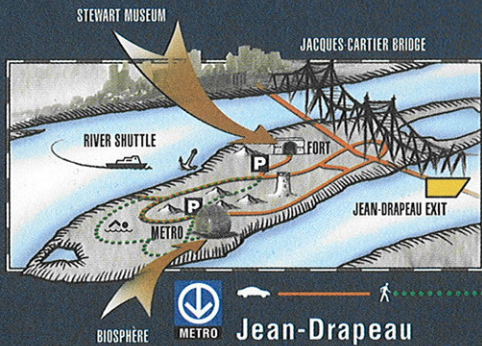
Cafeteria Restaurant

Daily menus, light meals, snacks, beer and wine. Outdoor terrace in season

Souvenirs

Gifts and souvenirs, photo film

General Information



Access:

- By metro: Jean-Drapeau station
- By car: Jacques-Cartier Bridge, Parc Jean-Drapeau exit
- Limited parking near the Biosphère (pay parking in summer)
- By river shuttle from the Old Port to St. Helen's Island (seasonal)

Opening Hours:

Summer season until September 3, 2001:
daily, 10:00 a.m. to 6:00 p.m.

Admission:

Adult: \$8.50
Student and senior (with I.D.): \$6.50
Youth 7 to 17: \$5.00
Children 6 and under (with an adult): free
Family rate*: \$19.00

Combined visit Biosphère - Stewart Museum:

Adult: \$12.00
Youth and student (with an I.D.): \$7.50
Family rate*: \$26.00

*2 adults and 2 children or 1 adult and 3 children

Taxes are not included. Prices subject to change without notice. Reduced rates for Access Montréal card holders
Group rates and guided tours available: (514) 496-8282



Biosphère
Canada

160 Chemin Tour de L'Isle, St. Helen's Island
Montreal (Quebec) Canada H3C 4G8
Telephone: (514) 283-5000
Fax: (514) 283-5021
E-mail: commentaires@biosphere.ec.gc.ca
Internet: <http://biosphere.ec.gc.ca>

Français au verso



ISBN 0-662-65742-X
Catalogue number: En37-129/2002

© Minister of Public Works and Government
Services Canada, 2001

The Biosphère is operated by Environment Canada



Environment
Canada

Environnement
Canada