



Q14  
106.5  
.N30  
1977  
pt. 1

**Library**  
**AUG 11 2006**  
**Environment Canada**

AQUATIC RESOURCES INVENTORY  
CAPE BRETON HIGHLANDS NATIONAL PARK  
NOVA SCOTIA

**Environment Canada**  
**Library**  
**5th Floor, Queen Square**  
**45 Alderney Drive**  
**Dartmouth, N.S. B2Y 2N6**

Part 1

Drainage Basin, Stream and Lake Catalogue

by

Joseph Kerekes  
Peter Schwinghamer  
Kok-leng Tay

1977

Department of Fisheries  
and the Environment  
Canadian Wildlife Service  
c/o Biology Department  
Dalhousie University  
Halifax, N. S. B3H 4J1

## ABSTRACT

A drainage reference numbering system which facilitates identification of freshwater features in Cape Breton Highlands National Park is presented. Streams, lakes and ponds in the Park are catalogued according to this system along with their locations and elevations above sea level. A set of 1:15840 scale maps on which freshwater features in the Park are identified by number and name (where applicable) accompanies this report.

ACKNOWLEDGEMENT

We wish to thank Mlle. Luce Charron of Parks Canada, Atlantic Region, for her assistance in obtaining the base maps used in this report.

## TABLE OF CONTENTS

	<u>Page</u>
ABSTRACT . . . . .	i
ACKNOWLEDGEMENTS . . . . .	ii
LIST OF FIGURES . . . . .	iv
LIST OF TABLES . . . . .	iv
INTRODUCTION . . . . .	1
SECTION I, PRESENTATION OF DATA . . . . .	3
SECTION II, RULES OF THE DRAINAGE REFERENCE NUMBERING SYSTEM . . . . .	7
REFERENCES . . . . .	62
APPENDIX A, Map Index for Drainage Basins . . . . .	63
APPENDIX B, Drainage Basin Index for Maps . . . . .	64
ATTACHMENTS, Fourteen 1:15,840 scale maps, listed in Appendix A, showing drainage reference numbers and names, identifying freshwater features in Cape Breton highlands National Park.	

## LIST OF FIGURES

<u>Figure</u>		<u>Page</u>
1	Cape Breton Highlands National Park, Major Drainages . . . .	6
2	Diagram illustrating the application of the Drainage Reference Numbering System . . . . .	9

## LIST OF TABLES

<u>Table</u>		<u>Page</u>
1	Drainage Basins of Cape Breton Highlands National Park . . .	5
2	Locations and elevations of bodies of water in drainage basin W16, Red River . . . . .	10
3	Locations and elevations of bodies of water in drainage basin W19, Grand Anse River . . . . .	11
4	Locations and elevations of bodies of water in drainage basin W20, Sutherland's Brook . . . . .	14
5	Locations and elevations of bodies of water in drainage basin W21, Sally's Brook . . . . .	14
6	Locations and elevations of bodies of water in drainage basin W22, MacKenzie River . . . . .	15
7	Locations and elevations of bodies of water in drainage basin W22A, Unnamed . . . . .	17
8	Locations and elevations of bodies of water in drainage basin W22B, Unnamed . . . . .	17
9	Locations and elevations of bodies of water in drainage basin W23, Phillips Cove Brook . . . . .	17
10	Locations and elevations of bodies of water in drainage basin W24, Fishing Cove River . . . . .	18
11	Locations and elevations of bodies of water in drainage basin W25, Pigeon Cove Brook . . . . .	19
12	Locations and elevations of bodies of water in drainage basin W26, George Brook . . . . .	19

## LIST OF TABLES (Cont'd)

<u>Table</u>		<u>Page</u>
13	Locations and elevations of bodies of water in drainage basin W26A, Unnamed . . . . .	20
14	Locations and elevations of bodies of water in drainage basin W27, Jumping Brook . . . . .	20
15	Locations and elevations of bodies of water in drainage basin W28, Unnamed . . . . .	21
16	Locations and elevations of bodies of water in drainage basin W29, Canadian Brook . . . . .	21
17	Locations and elevations of bodies of water in drainage basin W30, Corney Brook . . . . .	22
18	Locations and elevations of bodies of water in drainage basin W31, Trout Brook . . . . .	23
19	Locations and elevations of bodies of water in drainage basin W32, Presqu'ile Brook . . . . .	23
20	Locations and elevations of bodies of water in drainage basin W33, Jerome Brook . . . . .	24
21	Locations and elevations of bodies of water in drainage basin W34, Cheticamp River . . . . .	25
22	Locations and elevations of bodies of water in drainage basin C22, North Aspy River . . . . .	32
23	Locations and elevations of bodies of water in drainage basin C23, Middle Aspy River . . . . .	36
24	Locations and elevations of bodies of water in drainage basin C24, Glasgow Brook . . . . .	39
25	Locations and elevations of bodies of water in drainage basin C25, Effie's Brook . . . . .	40
26	Locations and elevations of bodies of water in drainage basin C31, Trout Brook . . . . .	40
27	Locations and elevations of bodies of water in drainage basin C32, Neil's Brook . . . . .	41
28	Locations and elevations of bodies of water in drainage basin C33, Halfway Brook . . . . .	42

## LIST OF TABLES (Cont'd)

<u>Table</u>		<u>Page</u>
29	Locations and elevations of bodies of water in drainage basin C34, Unnamed . . . . .	43
30	Locations and elevations of bodies of water in drainage basin C34A, Unnamed . . . . .	44
31	Locations and elevations of bodies of water in drainage basin C35, Unnamed . . . . .	44
32	Locations and elevations of bodies of water in drainage basin C36, Black Brook . . . . .	45
33	Locations and elevations of bodies of water in drainage basin C36A, Unnamed . . . . .	49
34	Locations and elevations of bodies of water in drainage basin C36B, Unnamed . . . . .	49
35	Locations and elevations of bodies of water in drainage basin C36C, Unnamed . . . . .	50
36	Locations and elevations of bodies of water in drainage basin C37, Unnamed . . . . .	50
37	Locations and elevations of bodies of water in drainage basin C38, Broad Cove Brook . . . . .	51
38	Locations and elevations of bodies of water in drainage basin C41, Dundas Brook . . . . .	52
39	Locations and elevations of bodies of water in drainage basin C42, Unnamed . . . . .	55
40	Locations and elevations of bodies of water in drainage basin C43, Unnamed . . . . .	55
41	Locations and elevations of bodies of water in drainage basin C44, Clyburn Brook . . . . .	56
42	Locations and elevations of bodies of water in drainage basin C44A, Unnamed . . . . .	59
43	Locations and elevations of bodies of water in drainage basin C44B, Unnamed . . . . .	59
44	Locations and elevations of bodies of water in drainage basin C45, Unnamed . . . . .	60
45	Metric equivalents of gradients and elevations used in tables 2 to 44 . . . . .	61



## INTRODUCTION

The lake and its drainage basin, the stream and its valley are functional units and their recognition and appreciation in land use planning and management cannot be overemphasized. The character of a lake depends on the interaction of the catchment area and the lake basin and one should view streams as parts of the valleys that they drain (Hynes, 1975; Rigler, 1975). The quality of the water and the biological response to it changes along the water course depending on the size, geology, topography of the drainage basin. The soils, the vegetation, the climate and the intensity of human activity are all important considerations. Their interaction will reflect on the physical and biological characteristics of bodies of water.

Cape Breton Highlands National Park consists of several relatively small drainage basins, most of them entirely within the Park boundaries along the entire water course from the headwaters to the sea. Parks Canada requested that a drainage basin catalogue based on a drainage reference numbering system, similar to that developed for Kejimikujik National Park Aquatic Resources Inventory (Kerekes and Schwinghamer, 1971), be adapted for use in Cape Breton Highlands National Park. The drainage basin catalogue would act as a supporting frame for the Aquatic Resources Inventory data. Considering that a large number of the lakes and streams are unnamed in the Park, the drainage basin catalogue would eliminate unavoidable future confusion by identifying and defining the nameless bodies of water by drainage reference numbers. The identified bodies of water then could be used as landmarks in other Park related endeavours, not only the Aquatic Resources Inventory.

The drainage reference numbers provide an identification system for bodies of water in such a way that in addition to its primary function, which is identification (unnamed streams and lakes), the reference number would indicate the position of a body of water in relation to other water bodies. The combination of numbers and letters of the alphabet would indicate whether a given body of water is a lake or stream, and how far upstream that body of water is in relation to other bodies of water in the same drainage system. It would also indicate its relationship to other drainage systems.

## I. PRESENTATION OF DATA

The Fisheries and Marine Service, Environment Canada, identified the drainage basins in the Atlantic Provinces on 1:50,000 scale topographical maps (Edwards and Hume, 1975). The drainage basin numbers related to Cape Breton Highlands National Park are shown in Figure 1 and are listed in Table 1. Twenty drainage basins belong to the Cape Breton Island West Drainage, while 23 drainage basins flow into the Cape Breton Island Central Drainage. The rules of the drainage reference numbering system for Cape Breton Highland National Park are presented in Section II and its application is illustrated in Figure 2 by means of a fictitious drainage system. Figure 2 does not refer directly to the C22 drainage system example used in Section II.

The streams and lakes were identified and the appropriate drainage reference number was printed for each body of water shown on 1:15,840 scale maps, compiled by the Surveys and Mapping Division, Department of Lands and Forests, N.S., from original map manuscripts by the Department of Energy, Mines and Resources, Ottawa; Crown Land Survey data and aerial photographs taken in 1969. These 14 map sheets, covering the entire Park area, are the main part of the Drainage Basin Catalogue. The streams and lakes identified on the maps are listed for each drainage basin in Tables 2 to 44. If a body of water has a name, it is given in the tables and is shown on the 1:15,840 scale maps. In addition to the names given on the 1:50,000 scale topographical maps, stream and lake names compiled by the Park (Anonymous, 1976) were also used. For streams the geographical position is given where the main stream enters the sea, and for the smaller streams where they enter the main stream or a major tributary. The geographical position for lakes is given at the approximate center of the lake. The approximate gradient of

streams and the approximate geodetic elevation of lakes are also given in feet, based on 1:50,000 scale topographical maps. Metric equivalents of gradients and elevations, given in feet, are presented in Table 45. The geographic location, the stream gradient and lake elevations are not listed for bodies of water that are outside the Park boundaries, except those near Cheticamp Lake in drainage basin W34 (Table 21).

Table 1.

Drainage basins of Cape Breton Highlands National Park. The reference basin numbers are based on the stream inventory of Edwards and Humes (1975).

---

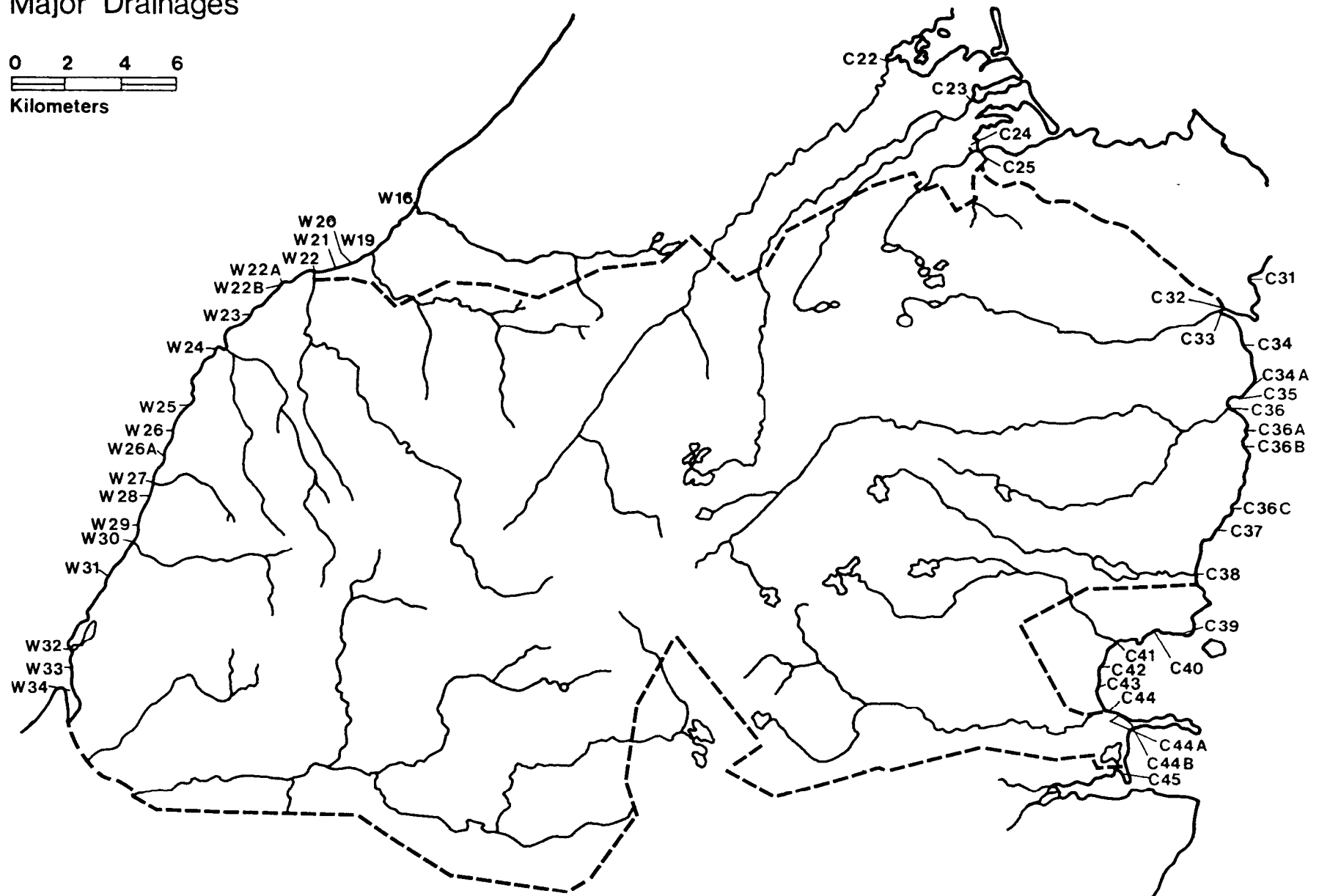
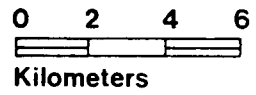
W = Cape Breton Island west drainage

W16	Red River
W19	Grand Anse River
W20	Sutherland's Brook
W21	Sally's Brook
W22	Mackenzie River
W22A	
W22B	
W23	Phillips Cove Brook
W24	Fishing Cove River
W25	Pigeon Cove Brook
W26	George Brook
W26A	
W27	Jumping Brook
W28	
W29	Canadian Brook
W30	Corney Brook
W31	Trout (Anthony Aucoin's) Brook
W32	Presqu'ile Brook
W33	Jerome (Rigwash) Brook
W34	Cheticamp River

C = Cape Breton Island central drainage

C22	North Aspy River
C23	Middle Aspy River
C24	Glasgow Brook
C25	Effies Brook
C31	Trout Brook
C32	Neil's Brook
C33	Halfway Brook
C34	
C34A	
C35	
C36	Black Brook
C36A	
C36B	
C36C	
C37	
C38	Warren Brook
Cl1	Dundas Brook
Cl2	
Cl3	
Cl4	Clyburn Brook
Cl4A	
Cl4B	
Cl5	Fresh Water Brook

Figure 1.  
Cape Breton Highlands  
National Park  
Major Drainages



## II. Rules of the Drainage Reference Numbering System

Figure 1 illustrates the application of the drainage reference numbering system. This system is modified from that used in the Kejimikujik Aquatic Resources Inventory, Part 1 (Kerekes and Schwinghamer, 1971).

1. Lakes and streams are given numbers which signify their positions within drainage systems in the Park. This number consists of a primary drainage reference number taken from the stream inventory program in the Maritime Provinces by Fisheries and Marine Service, Environment Canada (Edwards and Humes (1975)), followed by a series of digits and lower case letters, separated by points, where necessary for clarity:

e.g. North Aspy River is           C22  
       Little Southwest Brook is   C22.13  
       Beal Lake is                   C22.13.1a  
       Otter Lake #2 is               C22.13.3ala

In the original version, all digits were in pairs, and all stream and lake designations were separated by points.

2. The main stream (the stream which empties to the sea) of each drainage system is identified by first (left) digit and upper case letter combination of the reference numbers of all streams and lakes in that drainage system:

e.g. all waters in the North Aspy River drainage system  
       have reference numbers which begin with C22. This  
       is the primary drainage reference number.

3. Tributary streams are identified by sequential numbers. Lakes are identified by sequential letters. The numbering and lettering starts at the farthest downstream point in the Park of the main stream and works upstream from there: e.g. the first tributary of the North

Aspy River (C22) is C22.1, the second is C22.2, etc. Thus, C22.22.1a (MacGregor Lake) would be the first lake on the first tributary of the twenty-second stream feeding into the North Aspy River. The next lake upstream from MacGregor Lake along C22.22.1 is C22.22.1b, then C22.22.1c, etc.

4. Tributaries entering lakes are numbered clockwise starting to the left of the outflow. They are numbered in sequence continuing from the last numbered tributary downstream from the lake. The main inflow of the lake receives the same number as the outflow: e.g. the main inflow into MacGregor Lake (C22.22.1a) is C22.22.1. There are four tributaries of C22.22.1 downstream from MacGregor Lake, C22.22.1.1 to C22.22.1.4, so the small stream entering MacGregor Lake is C22.22.1.a.5. The sequence continues upstream from the lake as in (3). The next stream entering C22.22.1 upstream from MacGregor Lake would be C22.22.1.6 because it enters the main stream directly, not through the lake.
5. Where a lake has no known outflow stream, it is assigned one which fits into the sequence of tributaries of the stream into which the lake drains. The number given the outflow stream precedes the letter of the lake as usual but it is enclosed in brackets: e.g. a lake which apparently drains into C22.13 upstream from C22.13.4 but has no connecting stream indicated is C22.13(5)a. The next tributary on C22.13 would be C22.13.6.
6. Where a stream draining to the sea has not been numbered by Edwards and Hume (1975) it is given the same number as the lower numbered stream next to it, followed by an upper case letter: e.g. there are two unnumbered streams between C44 and C45. These are called C44A and C44B. Three streams entering the sea between C36 and C37 are C36A, C36B and C36C. Wreck Beach Pond is C36A.a.



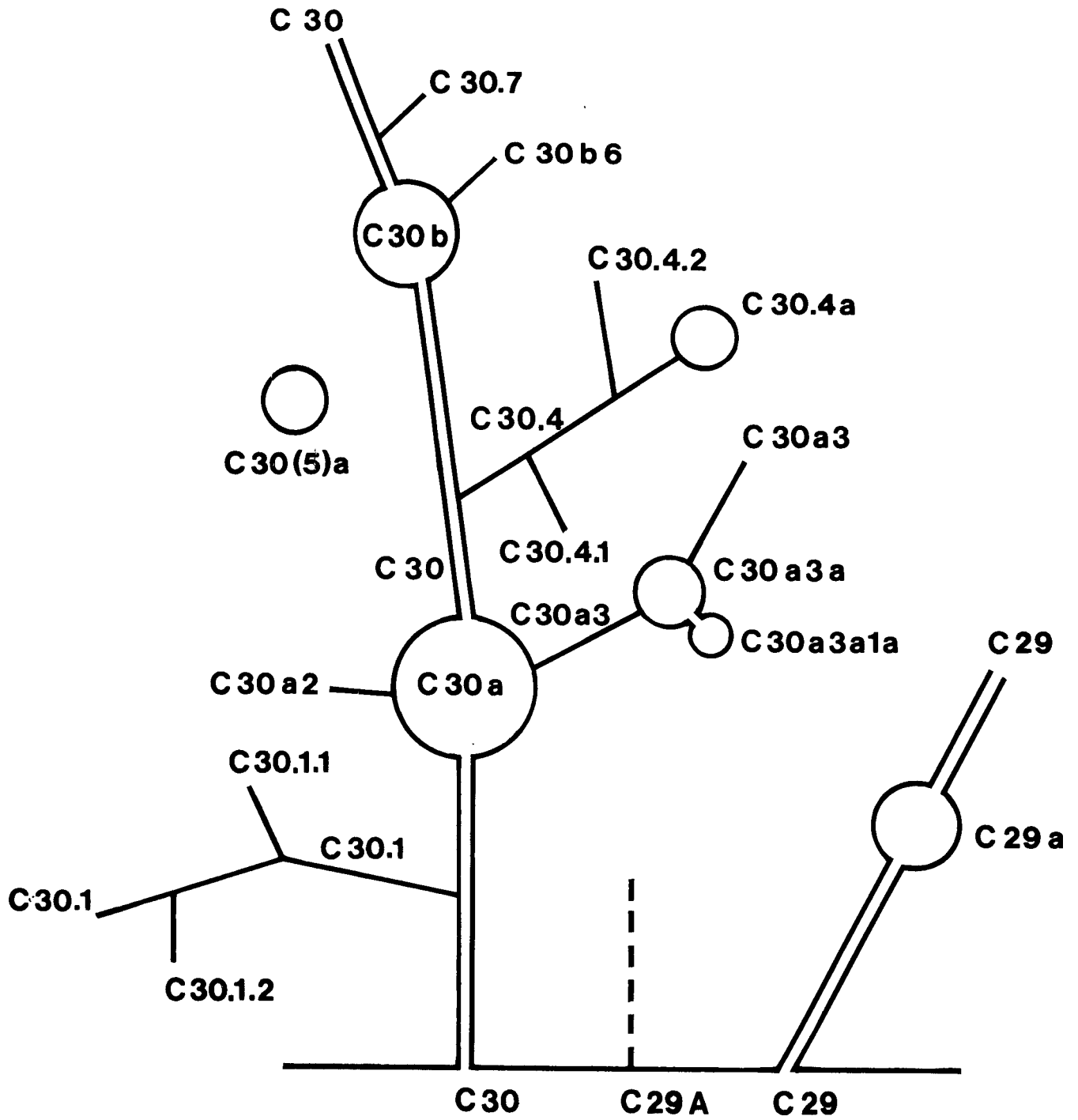


Figure 2. Diagram illustrating the application of the Drainage Reference Numbering System.

Table 2 . Locations, approximate elevations of bodies of water in drainage basin W16 (Red River), Cape Breton Highlands National Park, N.S. (SL = Sea level)

Drainage reference number	Name	Latitude	Longitude	Gradient, elevation (feet)
W16	Red River			
W16.1				
W16.2				
W16.3				
W16.4				
W16.5				
W16.6				
W16.7				
W16.8				
W16.9				
W16.10				
W16.11				
W16.12				
W16.13		46°49'52"	60°41'17"	1400-850
W16.13.1		46 49 01	60 41 04	*
W16.14				
W16.15				
W16.16				
W16.17		46 49 50	60 39 51	*
W16.18				

\* Stream is not shown on 1:50,000 scale map.

Table 3 . Locations, approximate elevations of bodies of water in drainage basin W19 (Grand Anse River), Cape Breton Highlands National Park, N.S. (SL = Sea level)

Drainage reference number	Name	Latitude	Longitude	Gradient, elevation (feet)
W19	Grand Anse River	46°49'55"	60°47'53"	1350-SL
W19.1	Sugar Brook	46 48 57	60 47 17	1100-50
W19.1a	Sugar Brook Lake #1	46 47 45	60 47 40	1100
W19.2		46 48 49	60 47 00	*
W19.3		46 48 57	60 46 29	1300-100
W19.3.1		46 48 15	60 46 45	*
W19.3a	Sugar Brook Lake #2	46 47 55	60 47 00	1300
W19.3b	Sugar Brook Lake #3	46 47 45	60 47 08	1300
W19.4	McIntosh Brook	46 49 00	60 46 16	1350-100
W19.4.1		46 48 38	60 46 00	*
W19.4.2		46 48 28	60 45 39	*
W19.4.2.1		46 48 26	60 45 36	*
W19.4.3		46 47 30	60 46 19	1300-600
W19.4.3a		46 47 30	60 47 08	1300
W19.4.4		46 47 23	60 46 11	1250-700
W19.4.4.1		46 47 13	60 45 35	1250-1150
W19.4.5		46 47 04	60 46 25	*
W19.4.6		46 46 48	60 46 28	*
W19.4.7		46 46 38	60 46 18	*
W19.4.8		46 46 39	60 46 15	1350-1150

Continued.....

Table 3 . . . . . continued

Drainage reference number	Name	Latitude	Longitude	Gradient, elevation (feet)
W19.4.9a	MacIntosh Lake	46°46'45"	60°45'50"	1300
W19.5		46 48 53	60 45 10	1000-100
W19.5.1		46 49 14	60 45 18	*
W19.5.2		46 49 20	60 45 21	1100-900
W19.6		46 48 51	60 45 06	1250-150
W19.7		46 48 32	60 44 06	1350-200
W19.7.1		46 48 34	60 43 51	1100-400
W19.7.2		46 48 37	60 43 32	1250-500
W19.8		46 48 20	60 43 48	1450-200
W19.8.1		46 48 21	60 43 18	*
W19.8.2		46 48 19	60 42 35	*
W19.8.3		46 48 14	60 42 13	1350-800
W19.8.3.1		46 47 59	60 42 04	*
W19.8.3.2		46 47 58	60 42 03	*
W19.8.3.3		46 47 55	60 41 49	1300-1250
W19.9		46 48 18	60 43 47	1250-300
W19.10		46 48 05	60 43 50	1100-300
W19.11		46 47 54	60 43 48	1150-300
W19.12		46 47 46	60 43 43	1350-300
W19.13		46 47 25	60 43 38	1450-400

Continued.....

Table 3 . . . . . continued

Drainage reference number	Name	Latitude	Longitude	Gradient, elevation (feet)
W19.13.1		46 47 21	60 43 29	1350-400
W19.13.1.1		46 46 48	60 43 04	1240-1050
W19.13.2		46 47 17	60 43 00	1350-700
W19.13.3		46 47 20	60 42 23	1350-1000
W19.13.4		46 47 16	60 41 43	*
W19.14		46 46 36	60 43 43	1300-600
W19.14.1		46 46 36	60 44 30	*
W19.14.2		46 46 43	60 44 41	*
W19.15		46 46 33	60 43 44	1250-600
W19.15.1		46 46 20	60 43 42	*
W19.15.2		46 46 04	60 43 15	*
W19.15.3		46 46 03	60 43 14	*
W19.16		46 46 11	60 44 09	1350-950
W19.16.1		46 46 06	60 44 42	1350-1250
W19.16.2		46 45 54	60 44 58	1350-1300
W19.17		46 45 58	60 44 08	1400-1150

\* Stream is not shown on 1:50,000 scale map.

Table 4 . Locations, approximate elevations of bodies of water in drainage basin W20 (Sutherland's Brook), Cape Breton Highlands National Park, N.S. (SL = Sea level)

Drainage reference number	Name	Latitude	Longitude	Gradient, elevation (feet)
W20	Sutherland's Brook	46°49'41"	60°48'09"	1150-SL
W20.1		46 48 52	60 48 07	*

\* Stream is not shown on 1:50,000 scale map.

Table 5 . Locations, approximate elevations of bodies of water in drainage basin W21 (Sally's Brook), Cape Breton Highlands National Park, N.S. (SL = Sea level)

Drainage reference number	Name	Latitude	Longitude	Gradient, elevation (feet)
W21	Sally's Brook	46°49'34"	60°49'06"	250-SL

Table 6 . Locations, approximate elevations of bodies of water in drainage basin W22 (MacKenzie River), Cape Breton Highlands National Park, N.S. (SL = Sea level)

Drainage reference number	Name	Latitude	Longitude	Gradient, elevation (feet)
W22	MacKenzie River	46°49'27"	60°49'48"	1600-SL
W22.1		46 49 24	60 49 43	*
W22.2		46 48 00	60 49 50	1350-300
W22.2.1		46 47 44	60 50 10	*
W22.2.1.1		46 47 46	60 50 13	*
W22.2.2		46 46 28	60 50 04	1250-1000
W22.2a	Benjie's Lake	46 44 25	60 48 32	1350
W22.3		46 47 53	60 49 42	1200-350
W22.4		46 47 58	60 49 26	*
W22.5		46 47 56	60 49 25	*
W22.5.1		46 47 59	60 49 09	*
W22.6		46 47 36	60 48 56	*
W22.7		46 46 24	60 48 01	1250-750
W22.8		46 46 20	60 47 59	1300-750
W22.8.1		46 45 59	60 47 58	*
W22.9		46 45 48	60 47 02	1500-850
W22.9.1		46 45 07	60 47 24	*
W22.9.2		46 44 42	60 47 11	*
W22.9a		46 43 50	60 47 40	1400
W22.9a1		46 43 46	60 47 43	1400-1400
W22.10		46 45 30	60 46 31	1350-950
W22.10.1		46 45 40	60 46 23	*

continued.....

Table 6 . . . . . continued

Drainage reference number	Name	Latitude	Longitude	Gradient, elevation (feet)
W22.11		46°45'21"	60°46'30"	*
W22.11.1		46 45 14	60 46 53	*
W22.11.1.1		46 45 11	60 47 02	*
W22.12		46 45 20	60 46 12	*
W22.13		46 45 17	60 46 01	*
W22.14		46 45 13	60 45 38	*
W22.15		46 45 11	60 45 34	*
W22.16		46 44 49	60 44 53	1400-1200
W22.17		46 44 03	60 45 06	1450-1250
W22.18		46 42 54	60 44 25	1650-1350
W22.19		46 42 35	60 44 26	1450-1400
W22.19.1		46 42 03	60 44 40	1550-1400
W22.19.1.1		46 41 56	60 44 47	*
W22.19.2		46 41 26	60 44 26	*
W22.19.3		46 41 20	60 44 31	*
W22.19.3.1		46 41 21	60 44 55	*
W22.20		46 42 25	60 43 56	1500-1450
W22.21		46 42 19	60 42 51	1600-1500

\* Stream is not shown on 1:50,000 scale map.



Table 7 . Locations, approximate elevations of bodies of water in drainage basin W22A, Cape Breton Highlands National Park, N.S.

Drainage reference number	Name	Latitude	Longitude	Gradient, elevation (feet)
W22A		46°48'57"	60°51'44"	*

\* Stream is not shown on 1:50,000 scale map.

Table 8 . Locations, approximate elevations of bodies of water in drainage basin W22B, Cape Breton Highlands National Park, N.S.

Drainage reference number	Name	Latitude	Longitude	Gradient, elevation (feet)
W22B		46°48'58"	60°51'18"	*

\* Stream is not shown on 1:50,000 scale map.

Table 9 . Locations, approximate elevations of bodies of water in drainage basin W23, Phillips Cove Brook, Cape Breton Highlands National Park, N.S. (SL = Sea level)

Drainage reference number	Name	Latitude	Longitude	Gradient, elevation (feet)
W23	Phillips Cove Brook	46°48'24"	60°51'58"	800-SL

Table 10 . Locations, approximate elevations of bodies of water in drainage basin W24 (Fishing Cove River), Cape Breton Highlands National Park, N.S. (SL = Sea level)

Drainage reference number	Name	Latitude	Longitude	Gradient, elevation (feet)
W24	Fishing Cove River	46°47'47"	60°52'38"	1450-SL
W24.1		46 47 43	60 52 25	750-50
W24.2	South Fishing Cove River	46 47 43	60 52 25	1350-50
W24.2.1		46 47 18	60 52 27	1150-250
W24.2.1.1		46 47 09	60 52 04	*
W24.2.2		46 46 46	60 51 52	*
W24.2.3		46 46 30	60 52 05	1250-1100
W24.2.4		46 44 29	60 51 30	*
W24.2.4.1		46 44 11	60 50 50	*
W24.3		46 47 34	60 51 29	500-200
W24.4		46 46 31	60 50 50	1250-750
W24.5		46 45 56	60 50 20	*
W24.6		46 45 38	60 50 14	*
W24.6.1		46 45 39	60 50 29	*
W24.7		46 45 16	60 50 02	1350-1050
W24.7.1		46 45 09	60 50 08	*
W24.8		46 44 51	60 49 43	*
W24.8.1		46 44 46	60 49 35	*
W24.9		46 44 45	60 49 58	1450-1200
W24.10		46 44 22	60 50 08	1400-1250
W24.11		46 44 17	60 50 05	1400-1300
W24.12		46 43 50	60 49 37	1550-1350
W24.13		46 43 17	60 49 12	1400-1400
W24a	Fishing Cove Lake	46 42 33	60 49 40	1450

\* Stream is not shown on 1:50,000 scale map.

Table 11. Locations, approximate elevations of bodies of water in drainage basin W25 (Pigeon Cove Brook), Cape Breton Highlands National Park, N.S. (SL = Sea level)

Drainage reference number	Name	Latitude	Longitude	Gradient, elevation (feet)
W25	Pigeon Cove Brook	46°46'37"	60°53'42"	1050-SL
W25.1		46 46 28	60 53 37	*

\* Stream is not shown on 1:50,000 scale map.

Table 12. Locations, approximate elevations of bodies of water in drainage basin W26 (George Brook), Cape Breton Highlands National Park, N.S. (SL = Sea level)

Drainage reference number	Name	Latitude	Longitude	Gradient, elevation (feet)
W26	George Brook	46°45'53"	60°54'26"	850-SL
W26.1		46 45 56	60 53 56	1000-300
W26.1.1		46 45 40	60 53 43	*
W26.2		46 45 54	60 53 42	*
W26.3		46 45 22	60 53 03	*
W26.4		46 45 18	60 52 56	*

\* Stream is not shown on 1:50,000 scale map.

Table 13. Locations, approximate elevations of bodies of water in drainage basin W26A, Cape Breton Highlands National Park, N.S.

Drainage reference number	Name	Latitude	Longitude	Gradient, elevation (feet)
W26A		46°45'22"	60°54'38"	*

\* Stream is not shown on 1:50,000 scale map.

Table 14. Locations, approximate elevations of bodies of water in drainage basin W27 (Jumping Brook), Cape Breton Highlands National Park, N.S. (SL = Sea level)

Drainage reference number	Name	Latitude	Longitude	Gradient, elevation (feet)
W27	Jumping Brook	46°44'36"	60°55'10"	1350-SL
W27.1		46 44 34	60 54 57	1000-250
W27.2		46 44 36	60 54 50	850-250
W27.3		46 44 40	60 54 40	1200-350
W27.4		46 44 44	60 54 30	1250-450
W27.5		46 44 53	60 54 18	850-700
W27.6		46 44 13	60 52 30	1350-1350

lake/pond	A (ha)	pH	elevation (ft)		TOR.MAP	N	E
1. Bear No. 1 (3.4)		5.6+	1500	Pg	11K/15	5182400	682200
2. Deer (6.0)		5.8-	1550	Pg	11K/15	81600	80700
3. Chain 4 (5.5)		5.9-	1300	Hgd/Pv	11K/15	87000	87100
4. John Dee (23.5)		5.1-	1350	Pg/Pv	11K/15	87250	89250
5. Roundhill 1 (17.1)		5.8 <sub>0</sub>	1300	Pg	11K/15	84700	86150
6. Gwinn (23.0)		5.0-	1350	Pv	11K/15	84300	87300
7. Twin 1 (4.3)		5.4-	1600	Dg/Pg	11K/15	80500	81600
8. Baldwin (45.8)		5.3-	1600		11K/10	79700	81800
9. Twin 2 (12.8)		5.3+	1600		11K/15	81000	81500
10. Burton (9.0)		5.2 <sub>0</sub>	1250		11K/15	89250	89400
11. Glasgow (23.9)		5.0+	1350		11K/16	88000	91300
12. Paquette (5.0)		6.7+	850		11K/16	89650	✓ 95800
13. Mica Hill (4.3)		5.0+	1100		11K/16	87500	95100
14. Round (14.4)		5.0-	1400		11K/15	86400	90200
15. Five Islands 1 (2.6)		4.9+	1450	Pc	11K/15	85850	88100
16. Jiggling Cove (6.2)		5.0-	150		11K/16	85100	✓ 703000
17. Broad Cove Mtn. (14.9)		6.1-	600		11K/9	78650	99200
18. Brown's (4.7)		4.7+	1000		11K/9	80150	96600
19. Rudderham (6.4)		5.0-	650		11K/9	78600	98100
20. Branch Pond (14.9)		4.9-	1000		11K/9	79500	✓ 94250
21. Sunday (14.9)		5.2-	1600		11K/10	78250	82000
22. Warren (89.8)		6.0-	50	S	11K/9	76300	✓ 99000
23. Cradle (9.8)		5.8+	850		11K/9	78000	96000
24. Spud (5.6)		4.8-	1250		11K/9	78000	91300
25. L. of Islands (32.9)		4.9+	1400		11K/10	79300	89200
26. Long Pond (9.4)		6.3+	400		11K/9	75700	95600
27. Roper (30.3)		5.0+	1350		11K/9	76300	91200
28. Dundas 3 (13.0)		4.9+	1450		11K/10	76100	88000
29. Dundas 5 (4.8)		4.9-	1450		11K/10	75350	87900

30.	Cann's (10.4)	<del>6.3</del> — (700)		11K/9	5171800	696300
31.	MacDonogh's (5.0)	(6.4) — (800)		11K/9	71000	95900
32.	Evil (15.4)	5.0 <sub>+</sub>	1450	11K/10	73400	88000
33.	Two Island (25.6)	5.2 <sub>-</sub>	1550	11K/10	70000	84500
34.	Indian (4.9)	5.8 <sub>-</sub>	1500	11K/10	71200	86250
35.	White Hill (29.0)	5.0 <sub>+</sub>	1600	11K/10	75000	85000
36.	Freshwater (42.2)	<del>7.0<sub>+</sub></del> — (SL)		11K/9	68800 ✓	99200
37.	Sugar Brook 2 (4.6)	(6.1)	1300	11K/10	84900	69200
38.	MacIntosh (4.7)	(6.7 <sub>-</sub> )	1300	11K/10	82800	70700
39.	Benjies (3.3)	5.6	1350	11K/10	78300	67400
40.	Bog Exhibit Pond (<0.1)	<del>7.4</del>		11K/10	78500	65750
41.	Bog South Pond (<0.1)	<del>4.9</del>		11K/10	78400	65800
42.	Fishing Cove (2.4)	5.2	1450	11K/10	74850	66000
43.	French (7.0)	5.8 <sub>-</sub>	1400	11K/10	77000 ✓	63100
44.	Corvey (4.8)	5.4 <sub>-</sub>	1500	11K/10	73000	64600
45.	L. Presqu'île (0.5)	<del>7.3</del> — (5)		11K/10	72100	55900
46.	Presqu'île (4.4)	<del>7.1</del> — (5)		11K/10	72500 ✓	56100
47.	Lac des Placettes 3 (1.6)	(6.1)	1450	11K/10	68400	61800
48.	Cranberry (9.8)	4.9 <sub>+</sub>	1650	11K/10	71000	76500

Table 15. Locations, approximate elevations of bodies of water in drainage basin W28, Cape Breton Highlands National Park, N.S. (SL = Sea level)

Drainage reference number	Name	Latitude	Longitude	Gradient, elevation (feet)
W28		46°44'13"	60°55'22"	850-SL

Table 16. Locations, approximate elevations of bodies of water in drainage basin W29 (Canadian Brook), Cape Breton Highlands National Park, N.S. (SL = Sea level)

Drainage reference number	Name	Latitude	Longitude	Gradient, elevation (feet)
W29	Canadian Brook	46°43'42"	60°55'35"	1000-SL
W29.1		46 43 45	60 55 10	*

\* Stream is not shown on 1:50,000 scale map.

Table 17. Locations, approximate elevations of bodies of water in drainage basin W30 (Corney Brook), Cape Breton Highlands National Park, N.S. (SL = Sea level)

Drainage reference number	Name	Latitude	Longitude	Gradient, elevation (feet)
W30	Corney Brook	46°43'34"	60°55'40"	1550-8L
W30.1	South Branch Corney Brook	46 42 19	60 54 29	1450-200
W30.1.1		46 42 07	60 53 55	1500-1150
W30.1.2		46 42 02	60 53 36	*
W30.1.2.1		46 41 41	60 53 25	1350-1300
W30.1.2.2		46 41 29	60 52 55	*
W30.1.3		46 41 46	60 52 20	*
W30.1.4		46 41 40	60 52 21	*
W30.2		46 42 19	60 54 20	1400-300
W30.3		46 43 12	60 53 38	1300-450
W30.3a		46 43 59	60 53 06	1300
W30.4		46 43 06	60 52 39	1400-850
W30.5		46 43 06	60 52 29	*
W30.6		46 43 14	60 52 15	1400-1000
W30.6a	French Lake	46 43 41	60 51 56	1400
W30.7		46 43 10	60 51 41	1450-1150
W30.8		46 43 09	60 51 26	1450-1150
W30.8.1		46 43 13	60 51 05	1450-1350
W30.9		46 42 29	60 51 11	1500-1400
W30a		46 41 54	60 50 33	1500
W30b	Corney Lake	46 41 31	60 50 35	1500
W30.9.1		46 41 50	60 51 09	*
W30.9.1.1		46 41 46	60 51 14	*

\* Stream is not shown on 1:50,000 scale map.



Table 18. Locations, approximate elevations of bodies of water in drainage basin W31 (Trout Brook), Cape Breton Highlands National Park, N.S. (SL = Sea level)

Drainage reference number	Name	Latitude	Longitude	Gradient, elevation (feet)
W31	Trout (Anthony Aucoin's) Brook	46°42'48"	60°56'20"	1400-SL
W31.1		46 42 41	60 55 58	1200-250
W31.2		46 42 22	60 55 21	*

\* Stream is not shown on 1:50,000 scale map.

Table 19. Locations, approximate elevations of bodies of water in drainage basin W32 (Presqu'ile Brook), Cape Breton Highlands National Park, N.S. (SL = Sea level)

Drainage reference number	Name	Latitude	Longitude	Gradient, elevation (feet)
W32	Presqu'ile Brook	46°41'10"	60°57'35"	200-SL
W32a	Presqu'ile "Little" Lake	46 41 10	60 57 35	5
W32b	Presqu'ile Lake	46 41 25	60 57 25	5

Table 20 . Locations, approximate elevations of bodies of water in drainage basin W33 (Jerome Brook), Cape Breton Highlands National Park, N.S. (SL = Sea level)

Drainage reference number	Name	Latitude	Longitude	Gradient, elevation (feet)
W33	Jerome (Rigwash) Brook	46°40'37"	60°57'34"	1150-SL
W33.1		46 40 42	60 56 26	1250-500
W33.2		46 40 55	60 56 34	*
W33.3		46 41 03	60 56 20	1300-850
W33.3.1		46 41 08	60 55 53	*

\* Stream is not shown on 1:50,000 scale map.

Table 21. Locations, approximate elevations of bodies of water in drainage basin W34 (Cheticamp River), Cape Breton Highlands National Park, N.S. (SL = Sea level)

Drainage reference number	Name	Latitude	Longitude	Gradient, elevation (feet)
W34	Cheticamp River	46°40'22"	60°57'42"	1650-SL
W34.1		46 39 28	60 57 38	100-50
W34.2	Au Coin Brook	46 39 07	60 57 51	1300-50
W34.3	Robert Brook	46 38 38	60 57 06	1500-50
W34.3.1		46 38 47	60 56 32	1100-100
W34.3.2	Ruisseau des Habitations Neuves	46 38 54	60 56 20	1250-200
W34.3.2.1		46 39 37	60 56 10	*
W34.3.3	Ruisseau des Pleees Ferrees	46 38 51	60 56 08	1450-250
W34.3.3.1		46 39 04	60 54 54	1350-650
W34.3.3a	Lac des Pleees Ferrees #1	46 39 02	60 53 42	1350
W34.3.3a1		46 39 03	60 53 39	1350
W34.3.3b	Lac des Pleees Ferrees #2	46 38 57	60 53 17	1450
W34.3.3c	Lac des Pleees Ferrees #3	46 39 05	60 53 03	1450
W34.3.3c(1)a	Lac des Pleees Ferrees #4	46 39 01	60 53 07	1450
W34.3.4		46 40 00	60 54 43	*
W34.3.4.1		46 39 49	60 54 36	*
W34.3.4.2		46 39 47	60 54 34	*
W34.3.4.3		46 39 41	60 54 21	*
W34.3.5		46 40 08	60 54 27	*
W34.3.6		46 40 21	60 54 21	1350-650
W34.3.6.1		46 40 28	60 54 24	*
W34.3.7		46 40 30	60 54 05	1350-700

continued....

Table 21 . . . . . continued

Drainage reference number	Name	Latitude	Longitude	Gradient, elevation (feet)
W34.3.8		46°40'27"	60°53'40"	1350-850
W34.3.8.1		46 40 43	60 53 35	*
W34.3.9		46 39 58	60 52 25	1400-1150
W34.3.9.1		46 39 53	60 52 16	*
W34.3.10		46 40 01	60 52 23	1500-1150
W34.4	Faribault Brook	46 37 49	60 55 27	1400-150
W34.5		46 37 56	60 54 38	1450-200
W34.6		46 38 07	60 53 49	1450-200
W34.6a		46 38 34	60 53 36	1450
W34.7		46 38 13	60 52 42	1450-300
W34.7.1		46 38 01	60 52 28	1550-950
W34.7.2		46 37 56	60 52 17	1400-1150
W34.7.2		46 37 42	60 52 03	1400-1350
W34.8		46 38 16	60 52 33	*
W34.9		46 38 17	60 52 14	1450-350
W34.9.1		46 39 14	60 52 13	1450-1400
W34.9.1a	Lac des Flees Ferrees #5	46 39 12	60 52 43	1450
W34.9.2		46 39 14	60 52 13	*
W34.10		46 38 19	60 51 55	*
W34.11		46 38 17	60 50 46	1600-450
W34.12	Le Blanc Brook	46 38 16	60 50 21	1400-500
W34.13		46 38 19	60 50 03	*
W34.14		46 38 32	60 49 40	1400-700

continued.....

Table 21 . . . . . continued

Drainage reference number	Name	Latitude	Longitude	Gradient, elevation (feet)
W34.15		46°38'34"	60°49'24"	1350-650
W34.16		46 38 31	60 49 20	1500-700
W34.16.1		46 39 11	60 48 36	1300-850
W34.16.1.1		46 39 16	60 47 30	*
W34.16.2		46 39 40	60 48 29	1550-900
W34.16.2.1		46 39 53	60 47 00	1500-1400
W34.16.3		46 40 00	60 48 46	1350-1000
W34.16.4		46 40 02	60 48 43	1350-1000
W34.16.4.1		46 40 13	60 47 50	*
W34.16.5		46 40 16	60 48 55	1500-1050
W34.16.5.1		46 40 17	60 49 36	*
W34.16.5.1.1		46 40 10	60 49 37	*
W34.16.5.2		46 40 23	60 49 40	*
W34.16.5.3		46 40 47	60 50 19	*
W34.16.5.4		46 40 53	60 50 38	*
W34.16.6		46 41 09	60 48 42	1550-1250
W34.16.6.1		46 41 17	60 48 18	1400-1300
W34.16.6.2		46 41 27	60 47 17	*
W34.16.6.3		46 41 27	60 47 17	*
W34.16.7		46 41 21	60 48 48	1400-1250
W34.16.8		46 42 07	60 48 38	1600-1300
W34.16.9		46 42 09	60 48 34	1350-1300
W34.16.10		46 42 17	60 48 28	1550-1350

continued.....

Table 21 . . . . . continued

Drainage reference number	Name	Latitude	Longitude	Gradient, elevation (feet)
W34.16.10.1		46°42'09"	60°46'51"	*
W34.16.10.2		46 42 06	60 46 27	*
W34.16.11		46 42 28	60 48 35	1450-1350
W34.16.12		46 42 37	60 48 32	1400-1350
W34.16.13		46 50 00	60 46 57	1550-1500
W34.16.14		46 50 13	60 46 23	*
W34.16.15		46 50 14	60 49 16	*
W34.16.16		46 50 29	60 46 08	*
W34.16.17		46 50 30	60 46 02	*
W34.17		46 38 26	60 49 16	*
W34.17.1		46 38 09	60 49 11	*
W34.18		46 38 28	60 48 26	*
W34.18.1		46 37 36	60 48 31	*
W34.19		46 38 18	60 48 11	1450-650
W34.20		46 38 23	60 47 38	1650-700
W34.20.1		46 38 40	60 46 17	1500-1050
W34.20.1.1		46 38 54	60 46 14	1500-1300
W34.20.2		46 38 41	60 45 52	*
W34.20.3		46 38 44	60 45 45	1550-1150
W34.20.4		46 39 18	60 45 20	*
W34.20.5		46 39 53	60 45 36	*
W34.20.6		46 40 19	60 45 23	1650-1450
W34.20.6.1		46 40 31	60 45 30	*

continued.....

Table 21 . . . . . continued

Drainage reference number	Name	Latitude	Longitude	Gradient, elevation (feet)
W34.20.7		46°40'24"	60°43'53"	1650-1550
W34.20.7(1)a		46 39 49	60 42 37	1650
W34.20.8		46 40 56	60 42 48	1650-1650
W34.20.9		46 41 09	60 42 32	1650-1650
W34.20.9(1)a		46 41 10	60 42 20	1650
W34.20(10)a		46 41 30	60 42 33	1650
W34.21		46 37 54	60 47 24	*
W34.22		46 37 53	60 47 19	1400-850
W34.22.1		46 37 59	60 47 14	1450-1000
W34.22.1.1		46 38 06	60 47 04	*
W34.22.2		46 37 54	60 46 49	1400-1350
W34.23	Fern Brook	46 37 04	60 45 08	1600-1150
W34.24	Artemise Brook	46 37 06	60 43 50	1550-1250
W34.24.1		46 36 44	60 42 56	1600-1350
W34.24.1.1		46 36 30	60 43 03	*
W34.24.1.2		46 36 19	60 43 29	*
W34.24.1.3		46 36 16	60 43 23	*
W34.24.2		46 36 44	60 42 38	1550-1400
W34.24.2.1		46 36 21	60 41 48	1550-1500
W34.24.2.2		46 36 28	60 41 43	1550-1500
W34.24.2.3		46 36 07	60 40 58	*
W34.24.3		46 36 56	60 41 50	1650-1500
W34.24.4		46 36 54	60 41 37	1550-1500

continued.....

Table 21 . . . . . continued

Drainage reference number	Name	Latitude	Longitude	Gradient, elevation (feet)
W34.24.4a	Artemise Lake	46°37'12"	60°40'12"	1550
W34.24.5		46 36 42	60 40 12	*
W34.25		46 37 26	60 43 37	1550-1300
W34.26		46 37 47	60 43 29	1500-1350
W34.27		46 38 12	60 43 21	1600-1400
W34.28		46 38 33	60 43 05	1600-1450
W34.28.1		46 38 42	60 43 18	1600-1500
W34.29		46 38 33	60 41 57	1650-1500
W34.29.1		46 38 39	60 41 57	1550-1500
W34.30		46 38 35	60 41 13	1600-1500
W34.31		46 38 46	60 41 00	1650-1500
W34.32		46 39 03	60 39 44	1700-1500
W34.32.1		46 40 10	60 39 33	1650-1550
W34.32.1.1		46 40 16	60 39 45	1650-1550
W34.32.1a	Cranberry Lake	46 40 15	60 41 33	1650
W34.32.2		46 40 48	60 39 41	1600-1600
W34.32.3		46 41 09	60 40 28	1650-1650
W34.33		46 39 02	60 39 17	1500-1500
W34.34		46 39 03	60 38 57	1550-1500
W34.35		46 39 08	60 38 35	1550-1500
W34.36		46 39 04	60 38 23	1500-1500
W34.37		46 39 15	60 37 46	1500-1500
W34.37a	Cheticamp Lake	46 39 14	60 37 12	1500

continued.....



Table 21 . . . . . continued

Drainage reference number	Name	Latitude	Longitude	Gradient, elevation (feet)
W34.37a1		46°39'26"	60°37'12"	1500-1500
W34.38		46 40 02	60 37 50	1550-1550
W34.39		46 40 59	60 38 31	1600-1550
W34.39.1		46 41 34	60 39 11	1600-1600
W34.40		46 41 24	60 37 48	1550-1550
W34.40(1)a		46 41 30	60 37 31	1550
W34.40a	Shank Lake	46 41 05	60 36 35	1600
W34.41		46 41 39	60 37 42	1600-1550
W34.(41)a		46 41 40	60 36 15	1600
W34.42		46 42 07	60 37 38	1650-1550
W34.42.1		46 42 14	60 37 05	1600-1600
W34.43		46 42 14	60 37 43	1600-1550

\* Stream is not shown on 1:50,000 scale map.

Table 22 . Locations, approximate elevations of bodies of water in drainage basin C22 (North Aspy River), Cape Breton Highlands National Park, N.S.

Drainage reference number	Name	Latitude	Longitude	Gradient, elevation (feet)
C22	North Aspy River			
C22.1				
C22.2				
C22.3				
C22.4				
C22.5				
C22.6				
C22.7				
C22.8				
C22.9				
C22.10		46°49'58"	60°36'46"	1200-100
C22.10.1		46 49 09	60 36 29	*
C22.10.2		46 48 54	60 36 26	*
C22.11		46 49 39	60 37 22	1350-100
C22.12		46 48 52	60 37 40	1400-100
C22.12.1		46 48 22	60 37 04	*
C22.12.2		46 48 21	60 37 03	1250-1000
C22.12a	Beulach Lake	46 48 06	60 36 15	1400
C22.13	Little Southwest Brook	46 48 32	60 38 20	1550-250
C22.13.1		46 48 00	60 37 57	1400-550
C22.13.1.1		46 47 38	60 38 03	1350-1250
C22.13.1.2		46 47 16	60 37 58	1350-1350

continued....

Table 22 . . . . continued

Drainage reference number	Name	Latitude	Longitude	Gradient, elevation (feet)
C22.13.1.2a	Beal Lake	46°47'20"	60°37'50"	1350
C22.13.2		46 47 38	60 37 16	1350-900
C22.13.3		46 46 52	60 37 24	1550-1400
C22.13.3a	Otter Lake #1	46 46 28	60 37 45	1450
C22.13.3a1		46 46 28	60 37 49	1450-1450
C22.13.3a1a	Otter Lake #2	46 46 29	60 38 00	1450
C22.13.3b		46 46 00	60 38 04	1550
C22.13.3b2		46 46 03	60 38 04	*
C22.13.4		46 46 45	60 37 13	1500-1450
C22.13.4a	Bear Lake #2	46 46 40	60 36 54	1500
C22.13.4b	Bear Lake #1	46 46 20	60 36 48	1500
C22.13(5)a				
C22.13a		46 46 16	60 37 26	*
C22.13b		46 46 08	60 37 35	*
C22.13c		46 46 05	60 37 38	*
C22.13d	Deer Lake	46 45 57	60 37 54	1550
C22.13e		46 45 47	60 37 52	1550
C22.14	MacGregor Brook	46 48 33	60 38 21	1400-250
C22.14.1		46 48 53	60 39 11	1350-800
C22.14.2		46 49 24	60 39 22	1300-1200
C22.15		46 48 20	60 38 37	1350-300
C22.15.1		46 48 18	60 39 24	*
C22.16		46 47 34	60 39 43	1300-400

continued....

Table 22 . . . . continued

Drainage reference number	Name	Latitude	Longitude	Gradient, elevation (feet)
C22.17		46°47'30"	60°39'47"	1350-400
C22.17.1		46 47 28	60 40 41	*
C22.18		46 47 28	60 39 50	1350-400
C22.19		46 47 05	60 40 10	900-450
C22.20		46 47 04	60 40 16	1450-450
C22.21		46 46 51	60 40 23	1500-450
C22.21.1		46 46 46	60 40 13	1150-500
C22.21a	Campbell's Lake	46 46 07	60 39 26	1500
C22.22	Big Southwest Brook	46 45 58	60 41 16	1600-550
C22.22.1		46 45 38	60 40 21	1550-750
C22.22.1.1		46 45 37	60 40 22	*
C22.22.1.2		46 45 37	60 40 08	*
C22.22.1.3		46 45 45	60 39 20	*
C22.22.1.4		46 45 53	60 39 26	*
C22.22.1.4a		46 45 56	60 39 37	*
C22.22.1.4b		46 45 57	60 39 38	*
C22.22.1a	MacGregor Lake	46 46 00	60 39 00	1500
C22.22.1a5		46 46 03	60 39 04	*
C22.22.1a5a		46 46 09	60 39 04	*
C22.22.1b		46 46 03	60 38 37	1550
C22.22.1c		46 46 13	60 38 20	1550
C22.22.2		46 45 33	60 40 24	1550-800

continued....

Table 22 . . . . continued

Drainage reference number	Name	Latitude	Longitude	Gradient, elevation (feet)
C22.22.3		46°44'34"	60°40'08"	1600-110
C22.22.3a		46 44 47	60 39 06	*
C22.22.3a1		46 44 46	60 39 08	*
C22.22.4		46 44 07	60 39 54	1650-1300
C22.22.5		46 42 38	60 40 25	1600-1550
C22.22.6		46 42 30	60 40 35	1600-1600
C22.22.7		46 42 18	60 40 34	1650-1600
C22.23		46 41 47	60 41 25	1350-600
C22.23.1		46 45 51	60 41 30	1400-650
C22.23.2		46 45 59	60 42 16	1450-1150
C22.24		46 45 22	60 41 48	1450-800
C22.25		46 44 42	60 42 31	*
C22.26		46 44 36	60 42 37	1600-950

\* Stream is not shown on 1:50,000 scale map.

Table 23. Locations, approximate elevations of bodies of water in drainage basin C23 (Middle Aspy River), Cape Breton Highland National Park, N.S.

Drainage reference number	Name	Latitude	Longitude	Gradient, elevation (feet)
C23	Middle Aspy River			
C23.1	South Aspy River	46°49'36"	60°33'34"	
C23.1.1		46 50 20	60 32 53	1100-1400
C23.1.1a		46 50 35	60 31 40	1100
C23.1.2		46 49 56	60 33 08	1300-550
C23.1.2a	Ridge Lake	46 49 35	60 32 38	1150
C23.1.2b		46 49 38	60 31 40	1300
C23.1.3		46 49 37	60 33 34	1300-700
C23.1.3(1)a		46 49 00	60 33 45	1200
C23.1.3a	Chain Lake #1	46 49 38	60 33 55	1250
C23.1.3b		46 48 35	60 33 45	*
C23.1.3c	Chain Lake #2	46 48 38	60 33 37	1300
C23.1.3d	Chain Lake #3	46 48 40	60 33 15	1300
C23.1.3e	Chain Lake #4	46 48 44	60 32 50	1300
C23.1a		46 49 17	60 32 56	1100
C23.1b		46 49 14	60 32 36	*
C23.1c	Miller Lake #1	46 49 12	60 32 03	1200
C23.1d		46 49 14	60 32 03	1200-1200
C23.1d4a	Miller Lake #2	46 49 20	60 31 58	1200
C23.1d		46 48 53	60 32 02	1250
C23.1d5		46 48 54	60 32 00	1350-1250
C23.1d5a	John Dee Lake	46 48 50	60 31 10	1350

continued....

Table 23 . . . . continued

Drainage reference number	Name	Latitude	Longitude	Gradient, elevation (feet)
C23.1.6		46°48'25"	60°32'40"	*
C23.1.6a		46 48 17	60 32 31	1400
C23.1.6b		46 48 14	60 32 18	1450
C23.1e	Roundhill Lake #3	46 47 56	60 33 10	1300
C23.1e7		46 47 58	60 33 03	1400-1300
C23.1f	Roundhill Lake #2	46 47 35	60 33 36	1300
C23.1f8		46 47 36	60 33 30	1300-1300
C23.1f8a	Roundhill Lake #1	46 47 30	60 33 45	1300
C23.1g	Gwinn Lake	46 47 20	60 32 47	1350
C23.2		46 49 53	60 35 02	900-350
C23.3		46 48 44	60 34 58	1350-550
C23.3.1		46 48 34	60 34 41	1300-900
C23.3a	Squirrel Lake	46 48 02	60 34 10	1350
C23.3a2		46 47 55	60 34 07	*
C23.3a2a		46 47 51	60 34 12	1350
C23.3b		46 47 55	60 33 52	1350
C23.4		46 48 43	60 34 58	1250-600
C23.5		46 46 49	60 35 12	*
C23.6		46 46 22	60 35 09	*
C23a	Boot Lake	46 46 15	60 35 00	1350
C23.7		46 45 46	60 35 26	1450-1400
C23.8		46 45 11	60 35 55	1500-1450
C23.8.1		46 45 08	60 35 56	*

continued.....

Table 23 . . . . continued

Drainage reference number	Name	Latitude	Longitude	Gradient, elevation (feet)
C23.9		46°45'18"	60°36'12"	*
C23.9a		46 45 50	60 36 31	1550
C23.9b		46 45 47	60 36 36	1550
C23.9.1		46 45 46	60 36 38	1550-1600
C23.9.1a		46 45 45	60 36 48	1600
C23.9c		46 45 38	60 36 43	1550
C23.9d	Twin Lake #1	46 45 22	60 37 15	1600
C23b		46 45 07	60 36 40	1550
C23c	Baldwin Lake	46 44 50	60 37 10	1600
C23d	Twin Lake #2	46 45 30	60 37 30	1600

\* Stream is not shown on 1:50,000 scale map.



Table 24. Locations, approximate elevations of bodies of water in drainage basin C24 (Glasgow Brook), Cape Breton Highlands National Park, N.S. (SL = Sea level)

Drainage reference number	Name	Latitude	Longitude	Gradient, elevation (feet)
C24	Glasgow Brook	46°52'07"	60°28'05"	1350-SL
C24.1		46 51 58	60 29 02	*
C24.2		46 50 24	60 31 00	1100-950
C24.2a	Pute Lake	46 50 22	60 30 40	1100
C24.3		46 50 08	60 31 14	1250-1150
C24.3a		46 49 52	60 31 47	1250
C24a	Burton Lake	46 49 54	60 31 00	1250
C24b		46 49 42	60 30 06	1300
C24c		46 49 38	60 30 03	1300
C24d		46 49 29	60 29 57	1350
C24e		46 49 25	60 29 50	1350
C24e1		46 49 25	60 29 45	1400-1350
C24e1a		46 49 30	60 29 23	1400
C24f		46 49 17	60 29 38	1350
C24g	Glasgow Lake	46 49 10	60 29 30	1350

\* Stream is not shown on 1:50,000 scale map.

Table 25. Locations, approximate elevations of bodies of water in drainage basin C25 (Effie's Brook), Cape Breton Highlands National Park, N.S. (SL = Sea level)

Drainage reference number	Name	Latitude	Longitude	Gradient, elevation (feet)
C25	Effie's Brook	46°52'07"	60°28'00"	1200-SL
C25.1		46 51 38	60 28 00	*
C25.2		46 50 53	60 28 04	1050-400
C25.2.1		46 50 27	60 27 00	850-650
C25.2.1a	Paquette Lake	46 50 00	60 26 00	850
C25.3		46 50 20	60 28 30	1000-700
C25.3a	Effie's Lake	46 50 09	60 28 30	1000
C25a	Three Mile Lake	46 50 10	60 30 00	1150
C25b		46 50 07	60 29 30	1200

\* Stream is not shown on 1:50,000 scale map.

Table 26. Locations, approximate elevations of bodies of water in drainage basin C31 (Trout Brook), Cape Breton Highlands National Park, N.S. (SL = Sea level)

Drainage reference number	Name	Latitude	Longitude	Gradient, elevation (feet)
C31	Trout Brook	46°49'17"	60°19'20"	750-SL

Table 27. Locations, approximate elevations of bodies of water in drainage basin C32 (Neil's Brook), Cape Breton Highlands National Park, N.S. (SL = Sea level)

Drainage reference number	Name	Latitude	Longitude	Gradient, elevation (feet)
C32	Neil's Brook	46°48'32"	60°20'00"	960-SL
C32.1	Rachel Brook	46 49 06	60 21 27	650-200
C32.1.1		46 49 32	60 22 48	*
C32.2		46 49 00	60 23 14	*
C32.3		46 48 59	60 24 22	*

\* Stream is not shown on 1:50,000 scale map.

Table 28 . . Locations, approximate elevations of bodies of water in drainage basin C33 (Halfway Brook), Cape Breton Highlands National Park, N.S. (SL = Sea level)

Drainage reference number	Name	Latitude	Longitude	Gradient, elevation (feet)
C33	Halfway Brook	46°48'30"	60°19'11"	1450-SL
C33.1		46 47 56	60 22 38	900-350
C33.1.1		46 48 00	60 22 47	700-400
C33.1.2		46 48 28	60 24 36	900-850
C33.2		46 47 50	60 24 17	1450-550
C33.2.1		46 47 47	60 24 44	950-550
C33.2.1		46 47 39	60 26 50	*
C33.2.3		46 47 37	60 39 02	*
C33.2.4		46 47 34	60 29 30	1450-1400
C33.3		46 48 20	60 26 19	1400-850
C33.3a		46 48 46	60 26 24	1100
C33.3b	Mica Hill Lake	46 48 52	60 26 35	1100
C33.3b1		46 48 48	60 26 38	*
C33.3b2		46 48 50	60 26 42	*
C33.3c		46 49 12	60 27 48	*
C33.3d	Daisley's Lake	46 49 21	60 28 23	1400
C33.4		46 48 24	60 26 33	*
C33.5		46 48 31	60 27 34	1300-1000
C33.6		46 48 35	60 27 53	1400-1000
C33a	Long Lake	46 48 43	60 29 24	1350
C33b	Round Lake	46 48 22	60 30 30	1400
C33b1		46 48 15	60 30 35	1400-1400

continued.....

Table 28 . . . . continued

Drainage reference number	Name	Latitude	Longitude	Gradient, elevation (feet)
C33bl.1		46°47'58"	60°30'07"	*
C33c		46 48 10	60 31 06	1450
C33d		46 48 06	60 31 12	1450
C33e	Lobster Lake	46 48 06	60 31 23	1450
C33el		46 47 57	60 31 27	1450-1450
C33ela		46 47 51	60 31 34	1450
C33f		41 48 16	60 31 36	1450
C33g	Five Island Lake #2	46 48 18	60 31 47	1450
C33h	Five Island Lake #1	46 48 06	60 32 08	1450
C33i		46 48 04	60 32 18	1450

\* Stream is not shown on 1:50,000 scale map.

Table 29. Locations, approximate elevations of bodies of water in drainage basin C34, Cape Breton Highlands National Park, N.S. (SL = Sea level)

Drainage reference number	Name	Latitude	Longitude	Gradient, elevation (feet)
C34		46°47'42"	60°19'22"	150-SL
C34a	Jigging Cove Lake	46 47 20	60 20 30	150

Table 30. Locations, approximate elevations of bodies of water in drainage basin C34A, Cape Breton Highlands National Park, N.S.

Drainage reference number	Name	Latitude	Longitude	Gradient, elevation (feet)
C34A		46°46'57"	60°19'20"	*

\* Stream is not shown on 1:50,000 scale map.

Table 31. Locations, approximate elevations of bodies of water in drainage basin C35, Cape Breton Highlands National Park, N.S.  
(SL = Sea level)

Drainage reference number	Name	Latitude	Longitude	Gradient, elevation (feet)
C35		46°46'39"	60°19'56"	350-SL
C35.1		46 47 06	60 20 56	400-200
C35.2		46 47 12	60 21 23	400-200
C35.2.1		46 47 13	60 21 28	400-300
C35.3		46 47 20	60 21 11	250-200
C35.4		46 47 29	60 21 26	350-200

Table 32. Locations, approximate elevations of bodies of water in drainage basin C36 (Black Brook), Cape Breton Highlands National Park, N.S. (SL = Sea level)

Drainage reference number	Name	Latitude	Longitude	Gradient, elevation (feet)
C36	Black Brook	46°46'29"	60°20'03"	1650-SL
C36.1	Mary Ann Brook	46 45 56	60 21 31	1300-100
C36.1a		46 45 57	60 21 40	*
C36.1.1		46 45 43	60 21 53	800-200
C36.1.1a		46 45 36	60 25 52	800
C36.1.2		46 44 41	60 22 43	600-400
C36.1.2a	Broad Cove Mountain Lake	46 44 00	60 23 30	600
C36.1.3		46 44 21	60 23 57	100-550
C36.1.3a		46 44 54	60 25 18	950
C36.1.3b	Brown's Lake	46 44 53	60 25 35	1000
C36.1.3c		46 45 00	60 25 42	1000
C36.1.4		46 44 18	60 24 11	1100-600
C36.1.4a	Javanaugh Lake	46 44 47	60 26 22	1100
C36.1.5		46 44 16	60 24 22	650-600
C36.1.5a	Rudderham Lake	46 44 00	60 24 26	650
C36.1.6		46 44 12	60 25 49	1000-800
C36.1.6.1		46 44 05	60 26 19	900-850
C36.1.6a	Mary Ann Lake	46 44 03	60 26 50	1000
C36.1.7		46 44 22	60 26 20	*
C36.1.7a	Lynx Lake	46 44 35	60 26 10	1050
C36.1b	Branch Pond	46 44 30	60 27 20	1000
C36.1.8		46 44 52	60 27 35	1150-1050

continued....

Table 32 . . . . continued

Drainage reference number	Name	Latitude	Longitude	Gradient, elevation (feet)
C36.1c		46 45 02	60 28 35	1150
C36.1d		46 44 59	60 28 55	1200
C36.1.9		46 44 58	60 29 04	1200-1200
C36.1.9a	Halfway Lake	46 44 55	60 29 20	1200
C36.1e	Groth Lake #1	46 45 20	60 29 30	1300
C36.1f	Groth Lake #2	46 45 26	60 29 30	1300
C36.2		46 46 28	60 23 02	600-250
C36(3)a	Mink Lake	46 46 00	60 23 33	500
C36.4		46 46 15	60 24 04	1350-350
C36.4.1		46 46 35	60 25 28	1000-750
C36.4.1.1		46 46 27	60 26 58	*
C36.4.1.1.1		46 46 41	60 27 18	*
C36.4.1.2		46 46 21	60 27 26	*
C36.4.2		46 47 11	60 25 55	1000-950
C36.4.2a	Lone Lake	46 47 20	60 26 05	1000
C36.4a		46 47 10	60 27 50	1350
C36.5	Donovan Brook	46 45 53	60 28 54	1350-750
C36.5.1		46 46 05	60 29 03	*
C36.5.2		46 46 40	60 29 54	*
C36.5.3		46 47 01	60 30 58	1400-1300
C36.6		46 45 59	60 29 22	1250-800
C36.6a		46 45 42	60 29 30	1250
C36.7		46 45 56	60 30 14	*

continued....



Table 32 . . . . continued

Drainage reference number	Name	Latitude	Longitude	Gradient, elevation (feet)
C36.8		46 46 09	60 32 05	1450-1050
C36.8.1		46 45 55	60 31 58	1400-1250
C36.8.2		46 45 30	60 31 52	*
C36.9	Doherty Brook	46 45 25	60 33 00	1400-1200
C36.9a	Fox Lake #1	46 46 10	60 33 50	1300
C36.9a1		46 46 14	60 33 49	1300-1300
C36.9ala	Fox Lake #2	46 46 20	60 33 33	1300
C36.9.2		46 46 43	60 34 03	1400-1300
C36.9.2.1		46 46 07	60 34 25	1350-1350
C36.9b		46 46 35	60 33 59	1300
C36.9.3		46 46 38	60 33 59	1350-1300
C36.9.3a		46 46 43	60 34 08	1350
C36.9.3a1		46 46 44	60 34 08	*
C36.9.3b		46 46 40	60 34 10	*
C36.9.3b1		46 46 39	60 34 11	*
C36.9c	Doherty Lake	46 46 50	60 33 52	1300
C36.9c(4)		46 47 00	60 33 54	*
C36.9c(4)a	Hill Top Lake	46 47 22	60 34 30	1450
C36.9d		46 46 57	60 33 10	1400
C36.10		46 45 09	60 33 42	1400-1200
C36.10a	Pike Lake	46 45 15	60 34 55	1400
C36.10a(1)a	Spar Lake	46 45 10	60 35 10	1400

continued....

Table 32 . . . . continued

Drainage reference number	Name	Latitude	Longitude	Gradient, elevation (feet)
C36.11		46 44 52	60 33 53	1450-1250
C36.11.1		46 44 48	60 33 15	1500-1300
C36.12	Snipe Brook	46 44 33	60 34 37	1600-1300
C36.12.1		46 43 27	60 34 32	1600-1600
C36.13		46 44 30	60 34 42	1600-1300
C36.13a	Sunday Lake	46 44 08	60 37 00	1600
C36.14		46 44 12	60 35 14	1600-1350
C36.15		46 43 31	60 36 15	1600-1500
C36.16		46 43 02	60 37 14	1600-1600

\* Stream is not shown on 1:50,000 scale map.

Table 33 . Locations, approximate elevations of bodies of water in drainage basin C36A, Cape Breton Highlands National Park, N.S.

Drainage reference number	Name	Latitude	Longitude	Gradient, elevation (feet)
C36A		46°45'52"	60°19'30"	*
C36A.a	Wreck Beach Pond	46 45 55	60 19 35	50

\* Stream is not shown on 1:50,000 scale map.

Table 34. Locations, approximate elevations of bodies of water in drainage basin C36B, Cape Breton Highlands National Park, N.S.

Drainage reference number	Name	Latitude	Longitude	Gradient, elevation (feet)
C36B		46°45'36"	60°19'38"	*
(C36B)a		46 45 00	60 21 00	*
(C36B)b		46 45 00	60 21 15	*

\* Stream is not shown on 1:50,000 scale map.

Table 35. Locations, approximate elevations of bodies of water in drainage basin C36C, Cape Breton Highlands National Park, N.S.

Drainage reference number	Name	Latitude	Longitude	Gradient, elevation (feet)
C36C		46°44'02"	60°20'02"	*
C36C.a	Best Lake #1	46 44 20	60 22 00	500

\* Stream is not shown on 1:50,000 scale map.

Table 36. Locations, approximate elevations of bodies of water in drainage basin C37, Cape Breton Highlands National Park, N.S. (SL = Sea level)

Drainage reference number	Name	Latitude	Longitude	Gradient, elevation (feet)
C37		46°43'34"	60°20'34"	550-SL
(C37)a	Best Lake #2	46 44 05	60 21 55	550

Table 37. Locations, approximate elevations of bodies of water in drainage basin C38 (Broad Cove Brook), Cape Breton Highlands National Park, N.S. (SL = Sea level)

Drainage reference number	Name	Latitude	Longitude	Gradient, elevation (feet)
C38	Broad Cove (Warren) Brook	46°42'41"	60°21'08"	1500-SL
C38.1		46 42 47	60 21 40	250-50
C38a	Warren Lake	46 42 50	60 23 40	50
C38a2		46 42 41	60 23 50	*
C38a3		46 42 56	60 23 52	850-50
C38a3a	Cradle Lake	46 43 50	60 26 00	850
C38.4		46 44 01	60 28 33	1300-750
C38.4.1		46 43 54	60 28 44	1300-1000
C38.4.1a		46 43 30	60 29 05	1300
C38.4a	Spud Lake	46 43 50	60 29 50	1250
C38.4b		46 43 33	60 29 30	1300
C38.5		46 44 18	60 29 18	1450-1050
C38.5.1		46 44 06	60 30 08	1300-1300
C38.5.1a	Duck Lake	46 44 05	60 30 27	1300
C38.5a		46 44 03	60 30 10	1300
C38.5b		46 44 00	60 30 14	1300
C38.5c	Roger Lake	46 43 30	60 30 20	1400
C38.6		46 44 56	60 30 22	1300-1250
C38.6a		46 45 08	60 30 25	1300
C38b	Lake of Islands	46 44 30	60 <sup>31</sup> <del>30</del> 20	1400
C38c		46 44 34	60 31 55	1400
C38d	Tipover Lake	46 43 52	60 32 20	1450
C38d1		46 43 56	60 32 24	1500-1450

\* Stream is not shown on 1:50,000 scale map.

Table 38. Locations, approximate elevations of bodies of water in drainage basin C41 (Dundas Brook), Cape Breton Highlands National Park, N.S. (SL = Sea level)

Drainage reference number	Name	Latitude	Longitude	Gradient, elevation (feet)
C41	Dundas Brook	46°41'13"	60°23'35"	1550-SL
C41.1	Cameron Brook	46 41 13	60 23 42	1350-SL
C41.1.1		46 41 19	60 24 25	*
C41.1.2		46 41 14	60 26 23	1050-600
C41.1.2.1		46 41 05	60 26 37	850-850
C41.1.2.1a ✓	Cameron Lake #1	46 41 07	60 26 45	850
C41.1.2a ✓	Cameron Lake #2	46 40 46	60 27 03	1050
C41.1a ✓	Boyd Lake	46 40 50	60 29 10	1350
C41.2		46 41 55	60 25 02	*
C41.2.1		46 41 55	60 25 40	*
C41.2a		46 41 58	60 25 44	300
C41.2b	Round Pond	46 42 00	60 25 53	350
C41.3		46 42 08	60 25 02	*
C41.4		46 42 13	60 25 04	*
C41.4a	Long Pond	46 <del>42</del> <sup>42</sup> 25	60 26 30	400
C41.5	Roper Brook	46 42 51	60 27 21	1450-300
C41.5.1		46 43 08	60 28 40	1250-1150
C41.5.1a		46 43 12	60 28 50	1250
C41.5a		46 43 10	60 29 02	1300
C41.5.2		46 43 03	60 29 18	1350-1350
C41.5.2.1		46 43 00	60 29 17	*
C41.5.2.1a		46 42 56	60 29 19	1350

continued....

Table 38 . . . . continued

Drainage reference number	Name	Latitude	Longitude	Gradient, elevation (feet)
C41.5.2.1b		46°42'53"	60°29'21"	1350
C41.5.2(2)a		46 42 55	60 28 58	1350
C41.5.2a		46 43 00	60 29 02	1350
C41.5b		46 43 00	60 29 35	1350
C41.5c	Roper Lake	46 42 50	60 29 52	1350
C41.5c3		46 43 03	60 29 57	1350-1350
C41.5c3a		46 43 10	60 30 00	1350
C41.5c4		46 43 01	60 30 02	1400-1350
C41.5c4a		46 43 04	60 30 10	1350
C41.5c4(1)a	Knob Lake	46 43 22	60 30 35	1400
C41.5c4(1)b		46 43 26	60 30 43	1400
C41.5c4b	Beaver Lake	46 43 08	60 30 40	1400
C41.5d	Oregon Lake	46 42 38	60 31 00	1450
C41.6		46 42 50	60 27 25	1100-300
C41.6a		46 42 05	60 27 39-	1100
C41.6b		46 42 02	60 27 26	1100
C41.6c		46 42 00	60 27 10	1000
C41.7		46 42 00	60 29 04	1100-500
C41.8		46 41 51	60 29 19	1150-550
C41.8.1		46 41 44	60 29 16	*
C41.8.2		46 41 38	60 29 17	1250-650
C41.9		46 41 48	60 30 52	*
C41a	Dundas Lake #1	46 42 35	60 31 45	1450

continued....

Table 38 . . . . continued

Drainage reference number	Name	Latitude	Longitude	Gradient, elevation (feet)
Ch1b	Dundas Lake #2	46°42'43"	60°31'55"	1450
Ch1c	Dundas Lake #3	46 42 50	60 32 20	1450
Ch1d	Dundas Lake #4	46 42 37	60 32 50	1450
Ch1d10		46 42 32	60 32 35	1450-1450
Ch1d10a	Dundas Lake #5	46 42 25	60 32 32	1450
Ch1d11		46 42 42	60 32 55	1550-1450

\* Stream is not shown on 1:50,000 scale map.



Table 39. Locations, approximate elevations of bodies of water in drainage basin C42, Cape Breton Highlands National Park, N.S. (SL = Sea level)

Drainage reference number	Name	Latitude	Longitude	Gradient, elevation (feet)
C42		46°40'33"	60°24'19"	700-SL
C42a		46 40 28	60 25 35	600
C42b	Cann's Lake	46 40 20	60 26 00	700

Table 40. Locations, approximate elevations of bodies of water in drainage basin C43, Cape Breton Highlands National Park, N.S. (SL = Sea level)

Drainage reference number	Name	Latitude	Longitude	Gradient, elevation (feet)
C43		46°40'12"	60°24'22"	800-SL
C43.1		46 39 57	60 25 20	*
C43a	MacDougall's Lake	46 40 00	60 26 24	800

\* Stream is not shown on 1:50,000 scale map.

Table 41. Locations, approximate elevations of bodies of water in drainage basin C44 (Clyburn Brook), Cape Breton Highland National Park, N.S. (SL = Sea level)

Drainage reference number	Name	Latitude	Longitude	Gradient, elevation (feet)
C44	Clyburn Brook	46°39'38"	60°23'55"	1600-SL
C44.1		46 39 28	60 26 53	1050-50
C44.1(1)a		46 38 38	60 26 20	1050
C44.2		46 39 23	60 27 54	1050-100
C44.3		46 39 16	60 29 01	1050-150
C44.3a		46 38 45	60 29 22	1050
C44.4		46 39 28	60 29 43	1150-150
C44.5	Soapstone Brook	46 39 27	60 29 44	1200-150
C44.5.1		46 39 01	60 30 52	1300-950
C44.5.1a	Soapstone Lake	46 38 45	60 30 54	1300
C44.5.2		46 39 01	60 30 56	*
C44.6	Dauphinee Brook	46 39 47	60 30 25	1450-250
C44.6.1	Curtis Brook	46 40 21	60 30 27	1550-500
C44.6.1.1		46 40 32	60 30 22	1350-1200
C44.6.1.1a		46 40 28	60 31 35	1350
C44.6.1a		46 40 03	60 32 00	1400
C44.6.1b		46 41 06	60 32 06	1400
C44.6.1c		46 41 09	60 32 16	1450
C44.6.1d	Gull Lake	46 41 25	60 32 30	1450
C44.6.1.2		46 41 40	60 32 43	1450-1450
C44.6.1e	Dauphiney Lake	46 41 57	60 32 00	1550
C44.6.2		46 41 17	60 31 00	1450-1350

continued....

Table 41 . . . . continued

Drainage reference number	Name	Latitude	Longitude	Gradient, elevation (feet)
C44.6.2a		46°41'27"	60°30'35"	1450
C44.6a	Little Dauphiney Lake	46 41 32	60 31 40	1450
C44.7		46 39 53	60 30 52	1300-300
C44.8	South Clyburn Brook	46 39 55	60 31 48	1550-450
C44.8.1		46 39 47	60 32 06	1500-500
C44.8.1a	Stoney Lake	46 39 50	60 33 23	1500
C44.8.2		46 39 24	60 32 17	1500-650
C44.8.2a		46 39 43	60 33 56	1500
C44.8.3		46 38 58	60 32 17	1250-800
C44.8.4		46 38 47	60 32 32	*
C44.8.5		46 38 38	60 33 01	1550-900
C44.8.5a		46 38 13	60 33 56	*
C44.8.5a1		46 38 13	60 33 57	*
C44.8.5.2		46 38 29	60 34 25	1450-1350
C44.8.5.3		46 38 25	60 35 15	1550-1500
C44.8.5.4		46 38 32	60 35 19	1550-1550
C44.8.5.5		46 38 33	60 35 24	1550-1550
C44.8.6		46 38 37	60 32 02	*
C44.8.7		46 38 40	60 33 42	*
C44.8.8		46 38 41	60 33 49	*
C44.8.8.1		46 38 41	60 33 50	*
C44.8.9		46 38 46	60 33 55	1550-1300
C44.8.9.1		46 38 48	60 35 07	*

continued....

Table 41 . . . . continued

Drainage reference number	Name	Latitude	Longitude	Gradient, elevation (feet)
Ch4.8a	Two Island Lake	46°39'35"	60°35'10"	1550
Ch4.9		46 40 49	60 33 23	1550-1050
Ch4.9.1		46 40 43	60 34 05	1550-1450
Ch4.9.1.1		46 40 39	60 34 12	1500-1400
Ch4.9.1.2		46 40 35	60 34 11	1500-1450
Ch4.9.1.2a	Indian Lake	46 40 14	60 33 50	1500
Ch4.9.1a	Clyburn Lake	46 40 00	60 34 50	1550
Ch4.9.2		46 41 00	60 34 52	1550-1500
Ch4.9(3)a	Fenton Lake	46 40 25	60 35 50	1600
Ch4.10		46 41 29	60 33 55	1550-1400
Ch4.10.1		46 41 30	60 34 40	1500-1500
Ch4.11		46 41 29	60 33 55	1450-1400
Ch4a	White Hill Lake	46 42 15	60 35 00	1600

\* Stream and lake are not shown on 1:50,000 scale map.

Table 42. Locations, approximate elevations of bodies of water in drainage basin C44A, Cape Breton Highland National Park, N.S. (SL = Sea level)

Drainage reference number	Name	Latitude	Longitude	Gradient, elevation (feet)
C44A				
C44A.a		46°39'33"	60°23'47"	SL

Table 43. Locations, approximate elevations of bodies of water in drainage basin C44B, Cape Breton Highlands National Park, N.S. (SL = Sea level)

Drainage reference number	Name	Latitude	Longitude	Gradient, elevation (feet)
C44B				
C44B.b		46°39'30"	60°23'35"	SL

Table 44. Locations, approximate elevations of bodies of water in drainage basin C45, Cape Breton Highlands National Park, N.S. (SL = Sea level)

Drainage reference number	Name	Latitude	Longitude	Gradient, elevation (feet)
C45				50-SL
C45a	Freshwater Lake	46°38'40"	60°23'47"	SL
C45b		46 39 00	60 23 47	50
C45c		46 39 13	60 24 15	50

Table 45.

Approximate metric equivalents (rounded off to the nearest 5 m) of gradients and elevations used in Tables 2 to 44.

*feet	meters	*feet	meters
50	15	900	275
100	30	950	290
150	45	1000	305
200	60	1050	320
250	75	1100	335
300	90	1150	350
350	105	1200	365
400	120	1250	380
450	135	1300	395
500	150	1350	410
550	170	1400	425
600	185	1450	440
650	200	1500	455
700	215	1550	470
800	245	1650	505
850	260	1700	520

\* 1 foot = 0.3048 m

## REFERENCES

- Anonymous, 1976. Proposed geographical names in Cape Breton Highlands National Park. 1:50,000 scale topographical maps, with suggested names printed on maps. Prepared by Staff of CBH National Park.
- Edwards, H.E., and T. M. Humes. 1975. Stream inventory program, Maritime Provinces. 17 Cape Breton West, 18 Cape Breton Center. Environment Canada, Fisheries and Marine Service. Resources Development Branch, Halifax, N. S. Unpubl. Reports, Maps.
- Hynes, H. B. N. 1975. The stream and its valley. Verh. Internat. Verein. Limnol., 19: 1-15.
- Kerekes, J., and P. Schwinghamer. 1971. Drainage basin catalogue for Kejimikujik National Park, Nova Scotia and a proposed drainage reference numbering system, applicable for all National Parks with reference to the National Park Aquatic Resources Inventories. Can. Wildlife Service, Ms. Reports. 22 pp.
- Rigler, F. H. 1975. Nutrient kinetics and the new typology. Internat. Verein. Limnol., 19: 197-210.



## APPENDIX A

Map index for drainage basins in Cape Breton Highlands National Park for Nova Scotia, Department of Lands and Forests, Crown Land Forestry Series, 1:15,840 scale maps, based on aerial photographs taken in 1953; for drainage basins: W = Cape Breton Island west drainage, C = Cape Breton Island central drainage (Edwards and Humes, 1975).

---

Map number	Drainage basin reference number
CB-102	W34
CB-103	W34
CB-107	W34, W33, W32, W31, W30, W29, W28, W27, W26
CB-108	W34, W30, W27, W24, W22
CB-109	W34, W22
CB-110	W34, C23, C36, C38, C41, C44
CB-111	C36, C38, C40, C41, C42, C43, C44, C44A, C44B, C45
CB-112	C36B, C36C, C37, C38, C39
CB-113	C31, C32, C33, C34, C34A, C35, C36, C36A, C36B
CB-114	C24, C25, C32, C33, C36
CB-115	C22, C23, C24, C33, C36, C38
CB-116	W19, W16, C22, C23
CB-117	W24, W23, W22B, W22A, W22, W21, W20, W19, W18, W17, W16
CB-118	W26A, W26, W25, W24

---

## APPENDIX B

Drainage basin index in Cape Breton Highlands National Park for Nova Scotia, Department of Lands and Forests, Crown Land Forestry Series, 1:15,840 scale maps, based on aerial photographs taken in 1953; for drainage basins: W = Cape Breton Island west drainage, C = Cape Breton Island central drainage (Edwards and Humes, 1975).

Drainage basin reference no.	Name of basin	*Map number
W16	Red River	116, 117
W19	Grand Anse River	116, 117
W20	Sutherland's Brook	117
W21	Sally's Brook	117
,W22	MacKenzie River	108, 109, 117
W22A		117
W22B		117
W23	Phyllips Cove Brook	117
W24	Fishing Cove River	108, 117, 118
W25	Pigeon Cove Brook	118
W26	George Brook	107, 118
W26A		118
W27	Jumping Brook	107, 108
W28		107
W29	Canadian Brook	107
W30	Corney Brook	107, 108
W31	Trout Brook	107
W32	Presqu'ile Brook	107
W33	Jerome (Rigwash) Brook	107
W34	Cheticamp River	102, 103, 107, 108, 109, 110
C22	North Aspy River	115, 116
C23	Middle Aspy River	110, 115, 116
C24	Glasgow Brook	114, 115
C25	Effies Brook	114
C31	Trout Brook	113
C32	Neil Brook	113, 114
C33	Halfway Brook	113, 114, 115
C34		113
C34A		113
C35		113

continued.....

## APPENDIX B

(cont'd)

Drainage basin reference no.	Name of basin	*Map number
C36	Black Brook	110, 111, 113, 114, 115
C36A		113
C36B		112, 113
C36C		112
C37		112
C38	Warren Brook	110, 111, 112, 115
C41	Dundas Brook	110, 111
C42		111
C43	Clyburn Brook	111
C44		110, 111
C44A		111
C44B	Fresh Water Brook	111
C45		111

\* CB prefix for all map numbers



List of Aquatic Resources Inventory Reports, Cape Breton Highlands  
National Park, Nova Scotia:

- Part 1. Drainage Basin, Stream and Lake Catalogue.
- Part 2. Lake Drainage and Morphometry.
- Part 3. Selected Limnological Measurements in 62  
Lakes.
- Part 4. Selected Limnological Measurements in  
Streams, Lake Inlets and Outlets.
- Part 5. Limnological Conditions.

