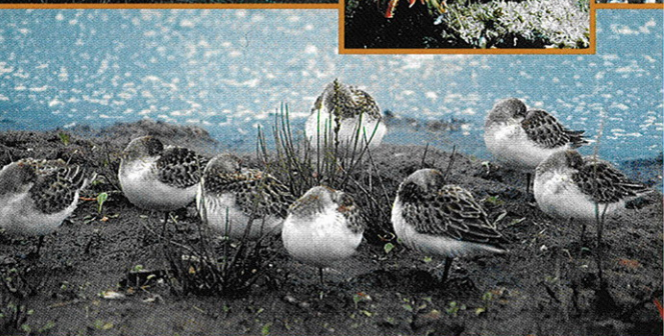
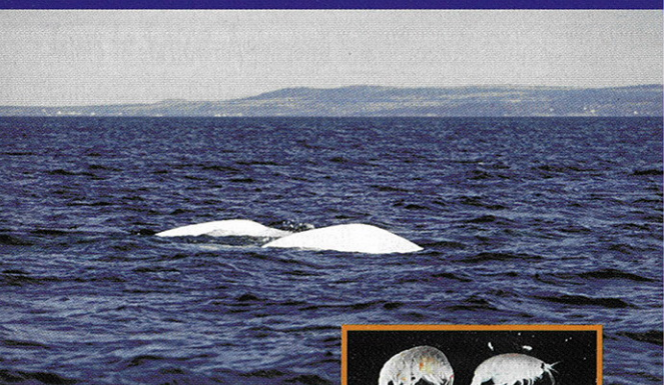


[www.gc.ec.gc.ca/faune/biodiv](http://www.gc.ec.gc.ca/faune/biodiv)



# *Biodiversity Portrait of the St. Lawrence*

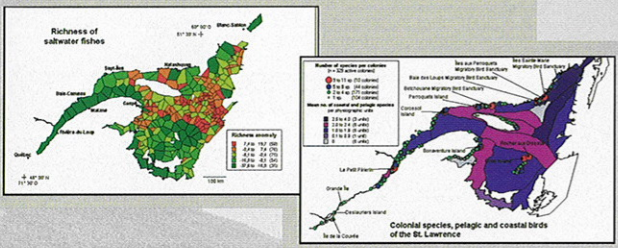
## A Virtual Expedition



Canada

Saint-Laurent  
Vision 2000

Québec

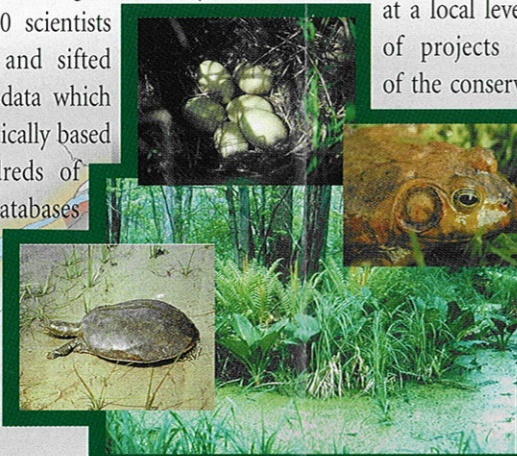


The St. Lawrence flows through the heart of the most populated areas of Quebec nurturing a mosaic of beautiful landscapes and unique ecosystems in which more than 6000 species of plants and animals are found. Most Quebecers live close to the St. Lawrence and some depend on its resources for their livelihood. This mosaic and its fauna and flora are in some instances truly threatened by human activities.

Conservationists and ecologists will certainly find this Internet based tool kit very useful since the entire biological and biodiversity dataset of current knowledge on the St. Lawrence is made available as an electronic atlas. Environment Canada and the ministère de l'Environnement du Québec as partners in the SLV 2000 Action Plan\* have agreed to jointly develop a knowledge database summarising all the available information on the biodiversity of the St. Lawrence and to identify possible conservation sites.

## A Detailed Painting of the Biodiversity of the St. Lawrence

The *Biodiversity Portrait of the St. Lawrence* is the result of an ambitious project that was undertaken to compile all of the knowledge that has been amassed during the last 30 years. A multidisciplinary team of 40 scientists worked together for 5 years and sifted through a colossal amount of data which they then compiled on a geomatics based data platform. Literally hundreds of theses, articles, reports and databases were analysed which taken together yielded an inventory of a multitude of sites along the St. Lawrence. This data has been made available in a set of



spatially referenced databases which enables one to spatially locate 465,000 data elements on 5000 species of plants and animals living along the St. Lawrence.

## A Knowledge Node on the Information Highway

This extensive compendium on the biodiversity of the St. Lawrence allows the user to access a very diverse dataset of complex, synoptic and interpreted data. Information on biodiversity is one of the mainstream products of the *St. Lawrence Portrait* and detailed descriptions of fauna and flora are provided. The information is presented in two ways: a) as a list of species, spanning close to 700 sectors of the St. Lawrence, or b) as a distribution map for each of the inventoried species. Detailed ecological studies of vascular plants, aquatic invertebrates, fishes, amphibians, reptiles, birds and mammals are also provided.

Within the framework of sustainable development and the conservation of the St. Lawrence's natural resources, the *Portrait* is an extremely valuable tool for decision analysis and support. It offers access to a list of protected sites under public and private jurisdiction, singles out potential sites for the conservation of biodiversity and threatened species as well as exceptionally unique and diverse landscapes. The *Biodiversity Portrait of the St. Lawrence*, furthermore, will be particularly useful at a local level for the implementation of a multitude of projects within the overall framework of the conservation of the biological resources of the St. Lawrence. For instance, it has spotlighted the urgency of protecting certain freshwater areas of the St. Lawrence.



## The St. Lawrence at your fingertips

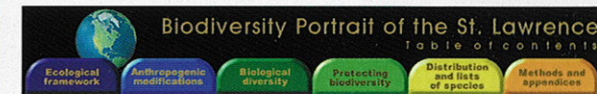
The *Biodiversity Portrait of the St. Lawrence* is a valuable free Internet based toolkit that is just a few seconds and a few clicks away. It gives you access to a vast encyclopaedia including 150 pages of descriptive text, 350 analytical tables and figures as well as 2500 species distribution maps. It is a universal teaching aide which will quickly become an indispensable tool for anyone interested in the St. Lawrence and its natural living resources.

Whether you are a scientist, a decision-maker, a naturalist, a natural resource manager or a person who simply loves the natural environment, all you have to do is to point your browser at the following Internet address:

[www.qc.ec.gc.ca/faune/biodiv](http://www.qc.ec.gc.ca/faune/biodiv)



- 40 scientists
- 5 years of detailed analysis and compilation
- hundreds of publications analysed
- a multitude of animal and plant inventories: 28,000 sites, 465,000 records, 5000 animal and plant species



The *Biodiversity Portrait of the St. Lawrence* contains the following:

- **Ecological framework:** bathymetry, sediments, hydrographic units, divisions, coastal segments and landscapes;
- **Biological diversity:** flora, aquatic invertebrates, fishes, amphibians, reptiles, birds and mammals;
- **Anthropogenic modifications:** loss of natural shorelines and wetlands, effects of commercial marine fisheries, chemical contamination and acidification;
- **Protecting the biodiversity:** identification of the most diverse aquatic and terrestrial sites, protected areas and priority sites, conservation plan;
- **Species distribution:** distribution maps for each species and a list of species for each square;
- **Methods and Appendices.**

\* St. Lawrence Vision 2000 Action Plan is implemented jointly under the Canada-Quebec Memorandum of Understanding in order to protect, conserve and develop the St. Lawrence. The data that was analysed and compiled in order to produce the *St. Lawrence Biodiversity Portrait* was obtained from the associations, organisations and governmental departments that are partners in the St. Lawrence Action Plan.

Published with the permission of the Minister of Environment of Canada

© Department of Public Works Canada 2000  
 Catalogue No: En153-110/2000  
 ISBN 0-662-65097-2

Photos: Environment Canada; Faune et Pêche Québec; Fisheries and Oceans Canada.

